



Government of India
Ministry of Earth Sciences



India Meteorological Department

PRESS RELEASE - 5

Time of issue: 1330 hours IST

Dated: 04-06-2020

Sub: Severe Cyclonic Storm 'NISARGA' crossed Maharashtra coast close to south of Alibagh on 3rd afternoon and gradually weakened into a depression today morning

Yesterday's severe cyclonic storm over eastcentral Arabian Sea moved northeastwards and crossed Maharashtra coast close to south of Alibagh as a severe cyclonic storm with a maximum sustained wind speed of 100-110 kmph gusting to 120 kmph during 1230-1430 hrs IST of 03rd June. Continuing to move northeastwards after landfall, it weakened into a cyclonic storm in the same evening (1730 hrs IST) over north Madhya Maharashtra and into a deep depression in the same midnight (2330 hrs IST) over the same region. It further weakened into a depression over western parts of Vidarbha and neighbourhood in the early morning (0530 hrs IST) of today, the 4th June 2020. At 0830 hours IST of today, it lay centered over **northwestern parts of Vidarbha and adjoining Madhya Pradesh** near latitude 21.2°N and longitude 76.9°E, about 60 km northwest of Akola (Maharashtra), 220 Km west-northwest of Nagpur (Maharashtra) and 230 km south-southeast of Bhopal (Madhya Pradesh).

It is very likely to move east-northeastwards and weaken into a well marked Low pressure area by today evening.

Warnings:

(i) Rainfall:

Light to moderate rainfall at most places with heavy to very heavy falls at isolated places very likely over east Madhya Pradesh and Chhattisgarh. Light to moderate rainfall at most places with heavy falls at isolated places very likely over Vidarbha and west Madhya Pradesh during next 24 hours.

(ii) Wind warning

Squally wind, speed reaching 35-45 kmph gusting to 55 kmph, is prevailing over western Districts of Vidarbha and adjoining Madhya Pradesh. It is likely to reduce gradually during next 12 hours.

Realised rainfall in cm (≥5cm) during past 24 hours ending at 0830 hrs IST of today, the 4th June:

Konkan: Lanja-13, Dapoli-12, Chiplun-10, Rajapur & Harnai-9 each, Guhagar-8, Jawhar-7 and Ratnagiri & Colaba-5 each,

Madhya Maharashtra: Mahabaleshwar-19, Gaganbawda & Nasik-14 each, Bhusawal & Igatpuri—11 each, Baglan & Devola-9 each, Chandgad-8, Surgana, Kelwan, Dindori, Malegaon, Radhanagari & Yawal-7 each, Chandwad, Jamner, Panhala, Niphad, Satara & Nandurbar-6 each and Yeola-5

Realised maximum sustained wind speed on 3rd June:

As predicted, the system crossed Maharashtra coast with a maximum sustained wind speed of 100-110 kmph gusting to 120 kmph between 1230-1430 hrs IST of 03rd June. Alibagh reported 102 kmph and Colaba reported 72 kmph during time of landfall on 3rd June, 2020.

This is last update in association with this system. However, regular bulletins shall continue from National Weather Forecasting Centre, New Delhi, Regional Meteorological Centre, Mumbai & Nagpur and Meteorological Centre Bhopal & Raipur.

Contact: Cyclone Warning Division, Office of the Director General of Meteorology,
India Meteorological Department, Ministry of Earth Sciences.

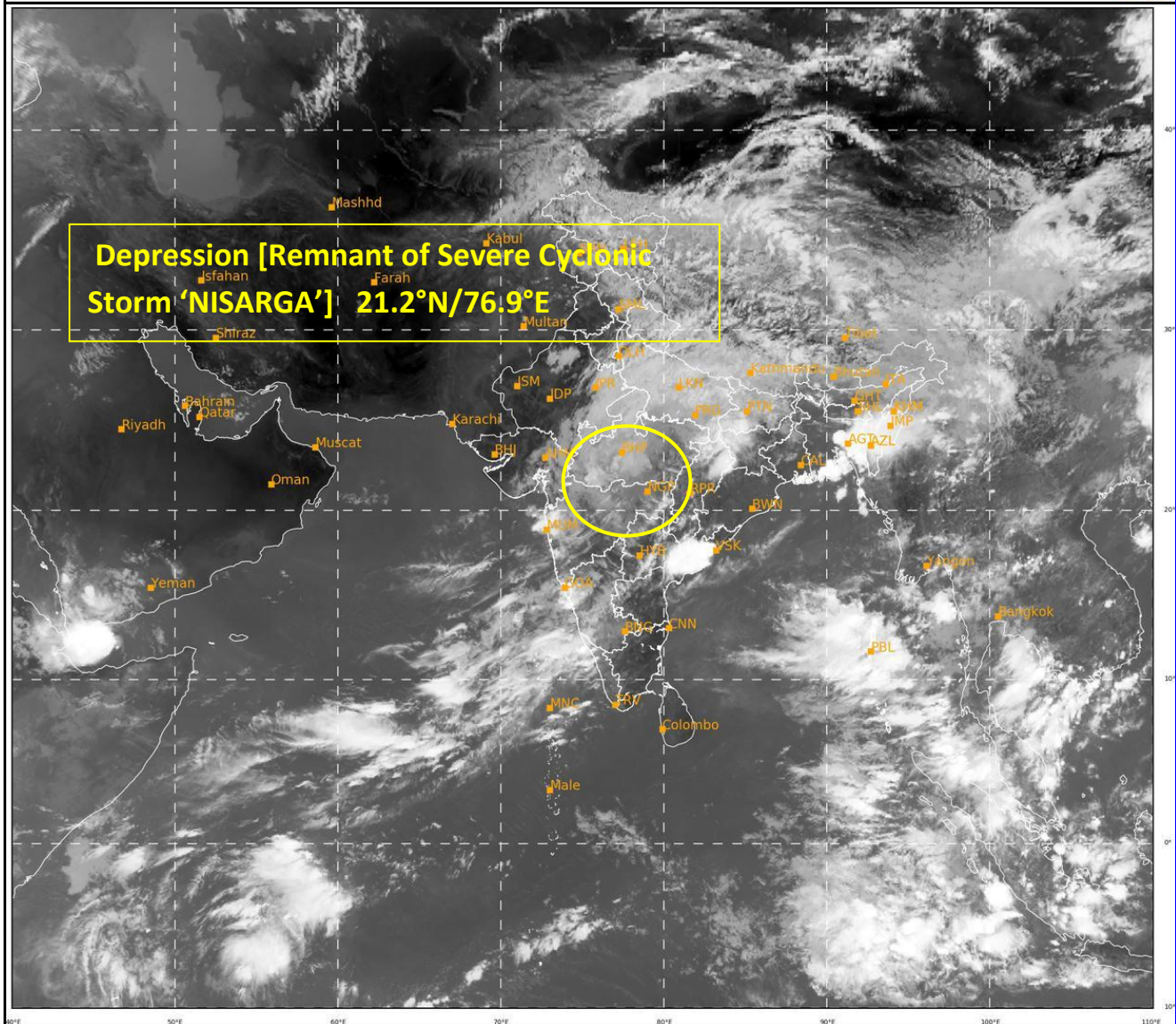
Phone: (91) 11-24652484, FAX: (91) 11-24643128, 24623220, E-mail: cwdhq2008@gmail.com, Website: rsmcnwdelhi.imd.gov.in

Spatial rainfall distribution: Isolated: <25%, A few: 26-50%, Many: 51-75%, Most: 76-100%

Rainfall amount (mm): Heavy rain: 64.5 – 115.5, Very heavy rain: 115.6 – 204.4, Extremely heavy rain: 204.5 or more.

SAT : INSAT-3D IMG
IMG_TIR1 10.8 um
L1C Mercator

04-06-2020/(0500 to 0527) GMT
04-06-2020/(1030 to 1057) IST



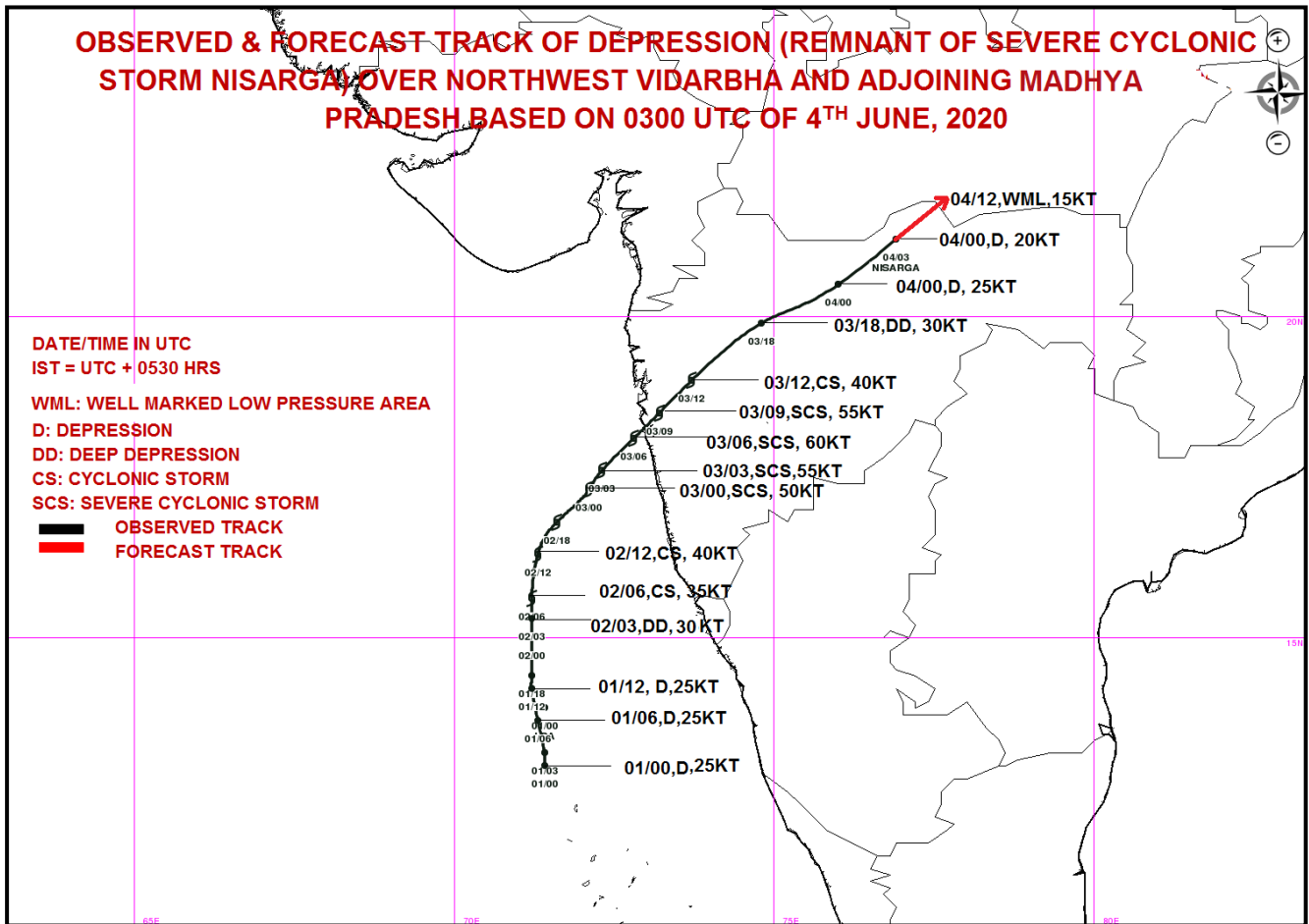
286

934

IMD, DELHI

Contact: Cyclone Warning Division, Office of the Director General of Meteorology,
India Meteorological Department, Ministry of Earth Sciences.
Phone: (91) 11-24652484, FAX: (91) 11-24643128, 24623220, E-mail:cwdhq2008@gmail.com, Website: rsmcnewdelhi.imd.gov.in
Spatial rainfall distribution: Isolated: <25%, A few: 26-50%, Many: 51-75%, Most: 76-100%
Rainfall amount (mm): Heavy rain: 64.5 – 115.5, Very heavy rain: 115.6 – 204.4, Extremely heavy rain: 204.5 or more.

OBSERVED & FORECAST TRACK OF DEPRESSION (REMNANT OF SEVERE CYCLONIC STORM NISARGA) OVER NORTHWEST VIDARBHA AND ADJOINING MADHYA PRADESH BASED ON 0300 UTC OF 4TH JUNE, 2020



Contact: Cyclone Warning Division, Office of the Director General of Meteorology,
 India Meteorological Department, Ministry of Earth Sciences.

Phone: (91) 11-24652484, FAX: (91) 11-24643128, 24623220, E-mail: cwdhq2008@gmail.com, Website: rsmcnwdelhi.imd.gov.in

Spatial rainfall distribution: Isolated: <25%, A few: 26-50%, Many: 51-75%, Most: 76-100%

Rainfall amount (mm): Heavy rain: 64.5 – 115.5, Very heavy rain: 115.6 – 204.4, Extremely heavy rain: 204.5 or more.