



Government of India
Ministry of Earth Sciences



India Meteorological Department

PRESS RELEASE - 8

Time of issue: 1400 hours IST

Dated: 14-10-2020

Sub: Depression over north Interior Karnataka and adjoining areas of Maharashtra & Telangana

Yesterday's **depression** over Telangana moved further west-northwestwards and lay centred at 0830 hours IST of today, the 14th October 2020, over north Interior Karnataka and adjoining areas of Maharashtra & Telangana near latitude 17.7°N and longitude 77.5°E, about 80 km northwest of Gulbarga (North Interior Karnataka) and about 160 km east of Sholapur (Madhya Maharashtra).

It is very likely to move west-northwestwards and gradually weaken into a Well marked low Pressure area during next 12 hours. Thereafter, it is very likely to continue to move west-northwestwards and emerge into eastcentral Arabian Sea off Maharashtra coast around 16th October morning. There is also possibility of its further intensification into a Depression over eastcentral & adjoining northeast Arabian Sea off Maharashtra – south Gujarat coasts and gradual west-northwestward movement.

Realised rainfall during past 24 hours from 0830 hours of 13th October to 0830 hours of 14th October is given in **Annexure 1**.

Forecast track and intensity are given in the following table:

Date/Time(IST)	Position (Lat. °N/ long. °E)	Maximum sustained surface wind speed (Kmph)	Category of cyclonic disturbance
14.10.20/0830	17.7/77.5	30-40 gusting to 50	Depression
14.10.20/1130	17.8/76.9	30-40 gusting to 50	Depression
14.10.20/1730	18.0/76.0	20-30 gusting to 40	Well marked low

Warnings:

(i) Rainfall warning

- ✓ **14th October 2020:** Light to moderate rainfall at most places with **heavy to very heavy falls** at a few places and **Extremely heavy rainfall (>20 cm per day)** at isolated places would occur over Madhya Maharashtra, south Konkan & Goa, coastal Karnataka, Ghat section of south interior Karnataka and adjoining Districts of north interior Karnataka and **heavy to very heavy falls** at isolated places over north Konkan and remaining districts of north interior Karnataka. Also **Heavy to very heavy falls** at isolated places likely over Marathawada during next 12 hours.
- ✓ **15th October 2020:** Light to moderate rainfall at most places with **heavy to very heavy falls** at a few places and **Extremely heavy rainfall (>20 cm per day)** at isolated places would occur over Konkan & Goa, **heavy to very heavy falls** at isolated places over coastal Karnataka and **heavy falls** at isolated places over Madhya Maharashtra south Gujarat region.

Contact: Cyclone Warning Division, Office of the Director General of Meteorology,
India Meteorological Department, Ministry of Earth Sciences.

Phone: (91) 11-24652484, FAX: (91) 11-24643128, 24623220, E-mail: cwdhq2008@gmail.com, Website: rsmcnewdelhi.imd.gov.in

Spatial rainfall distribution: Isolated: <25%, A few: 26-50%, Many: 51-75%, Most: 76-100%

Rainfall amount (mm): Heavy rain: 64.5 – 115.5, Very heavy rain: 115.6 – 204.4, Extremely heavy rain: 204.5 or more.

(ii) Wind warning

- ✓ Strong wind speed reaching 30-40 kmph gusting to 50 kmph very likely to prevail around the system centre and over Madhya Maharashtra, Marathwada and adjoining North Interior Karnataka during next 12 hours and gradually decrease thereafter.
- ✓ Squally wind speed reaching 40-50 kmph gusting to 60 kmph very likely to commence along & off Maharashtra & south Gujarat coasts from 15th October morning. It would gradually increase becoming 45-55 kmph gusting to 65 kmph over eastcentral & adjoining northeast Arabian Sea and along & off Maharashtra & Gujarat coasts from 16th October evening.

(iii) Sea condition

- ✓ Sea condition will be rough to very rough over eastcentral & adjoining northeast Arabian Sea and along & off Maharashtra & Gujarat coasts from 16th October.

(iv) Fishermen Warning

- ✓ Fishermen are advised not to venture into the Sea along & off Maharashtra & south Gujarat coasts and over eastcentral & adjoining northeast Arabian Sea from 16th October onwards for the subsequent 3 days.
- ✓ Fishermen out at Sea are advised to return to coast by 15th October 2020.

(v) Damage expected over Karnataka and Maharashtra

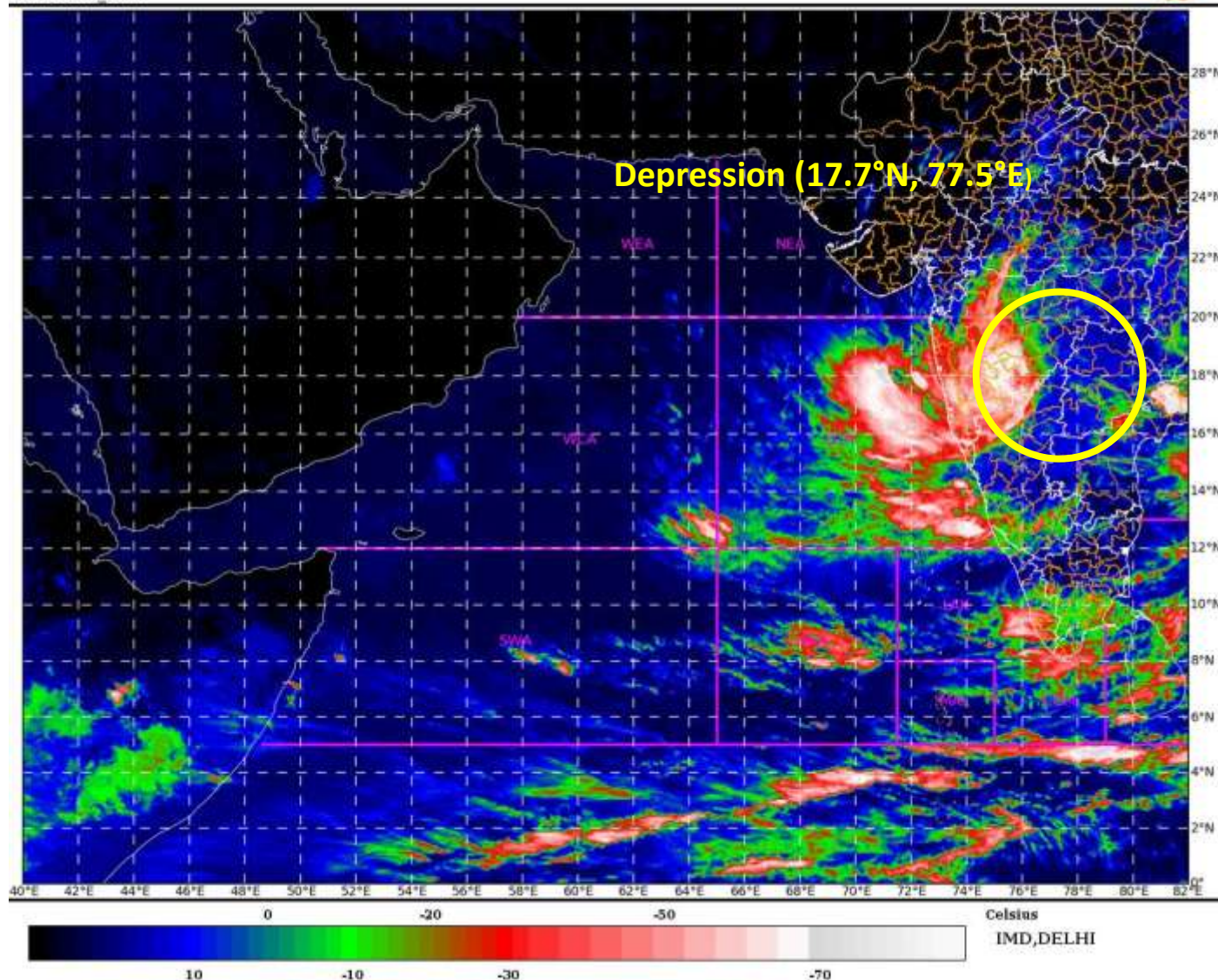
- ✓ Damage to paddy crops, banana, papaya trees and orchards & drumstick trees and Horticultural crops. Minor damage to Kutcha embankments due to heavy rain.
- ✓ Flooding / water logging in low lying areas, disruption of surface transport, landslides, water pooling etc. Also Roads could be wet & slippery.
- ✓ Clogging of Drainage system and flash floods due to heavy rains.

The system is under continuous surveillance and the concerned state governments are being informed regularly.

For details kindly visit www.rsmcnewdelhi.imd.gov.in, www.imd.gov.in

SAT : INSAT-3D IMG
IMG_TIR1_TEMP 10.8 um
ARABIAN SEA

14-10-2020(0530 to 0557) GMT
14-10-2020(1100 to 1127) IST



Contact: Cyclone Warning Division, Office of the Director General of Meteorology,
India Meteorological Department, Ministry of Earth Sciences.

Phone: (91) 11-24652484, FAX: (91) 11-24643128, 24623220, E-mail: cwdhq2008@gmail.com, Website: rsmcnewdelhi.imd.gov.in

Spatial rainfall distribution: Isolated: <25%, A few: 26-50%, Many: 51-75%, Most: 76-100%

Rainfall amount (mm): Heavy rain: 64.5 – 115.5, Very heavy rain: 115.6 – 204.4, Extremely heavy rain: 204.5 or more.



OBSERVED AND FORECAST TRACK ALONGWITH CONE OF UNCERTAINTY OF DEPRESSION OVER NORTH INTERIOR KARNATAKA AND ADJOINING AREAS OF MAHARASHTRA & TELANGANA BASED ON 0300 UTC OF 14TH OCT, 2020



DATE/TIME IN UTC
 IST=UTC + 0530
 L: LOW PRESSURE AREA
 WML: WELL MARKED LOW PRESSURE AREA
 D: DEPRESSION (17-27 KT)
 DD: DEEP DEPRESSION (28-33 KT)
 CS: CYCLONIC STORM (34-47 KT)
 SCS: SEVERE CYCLONIC STORM (48-63KT)
 VSCS: VERY SEVERE CYCLONIC STORM (64-89 KT)
 ESCS: EXTREMELY SEVERE CYCLONIC STORM (90-119 KT)
 SuCS: SUPER CYCLONIC STORM (≥ 20 KT)

- LESS THAN 34 KT
- 34-47 KT
- ≥ 48 KT
- OBSERVED TRACK
- FORECAST TRACK
- ▲ CONE OF UNCERTAINTY

Contact: Cyclone Warning Division, Office of the Director General of Meteorology,
 India Meteorological Department, Ministry of Earth Sciences.
 Phone: (91) 11-24652484, FAX: (91) 11-24643128, 24623220, E-mail: cwdhq2008@gmail.com, Website: rsmcnewdelhi.imd.gov.in
 Spatial rainfall distribution: Isolated: <25%, A few: 26-50%, Many: 51-75%, Most: 76-100%
 Rainfall amount (mm): Heavy rain: 64.5 – 115.5, Very heavy rain: 115.6 – 204.4, Extremely heavy rain: 204.5 or more.

Annexure-1

Representative amounts of Realised rainfall (cm) during past 24 hours from 0830 hours of 13th October to 0830 hours of 14th October is presented below:

Telangana:

Singapur Township-32; Hayathnagar-29; Verkatpalle-26, Mangalpalle, Rajeevnagar, Osmania University-25;Ghanpur (NTPC), Sardarmahal-22, Begumpet, Arutla, Yellanki, Mulugu-21; Laithbagh Tanaji Nagar, Asifnagar-20; Nalgonda-16

North Interior Karnataka:

Humnabad, Gulbarga, Kalburgi, Bidar-13, Chincholi-11

South Interior Karnataka: Agumbe-14.

Coastal Karnataka:

Kollur-24, Mangaluru, Kota-17, Karkala, Udupi, Mudubidre-13.

Contact: Cyclone Warning Division, Office of the Director General of Meteorology,
India Meteorological Department, Ministry of Earth Sciences.

Phone: (91) 11-24652484, FAX: (91) 11-24643128, 24623220, E-mail: cwdhq2008@gmail.com, Website: rsmcnewdelhi.imd.gov.in

Spatial rainfall distribution: Isolated: <25%, A few: 26-50%, Many: 51-75%, Most: 76-100%

Rainfall amount (mm): Heavy rain: 64.5 – 115.5, Very heavy rain: 115.6 – 204.4, Extremely heavy rain: 204.5 or more.