



Government of India  
Ministry of Earth Sciences



India Meteorological Department

## PRESS RELEASE - 3

Time of issue: 1330 hours IST

Dated: 18 -10-2020

### Sub: Depression over eastcentral and adjoining westcentral & north Arabian Sea

Yesterday's depression moved westwards and lay centred in the morning (0830 hrs IST) of today, the 18<sup>th</sup> October, 2020 over eastcentral and adjoining westcentral & north Arabian Sea near latitude 17.8°N and longitude 65.8°E, about 590 km west-southwest of Veraval (Saurashtra– Gujarat) and 1260 km east-northeast of Salalah (Oman).

It is very likely to move nearly westwards during next 24 hours and weaken gradually thereafter.

As the system has moved away from the Indian coast, no adverse weather associated with this system is likely over the west coast of India. However, Fishermen warning prevails over northern parts of central Arabian Sea and north Arabian Sea as specified below.

#### Warnings:

##### (i) Wind warning

✓ Squally wind speed reaching 45-55 kmph gusting to 65 kmph likely to prevail over northern parts of central Arabian Sea and northwest Arabian Sea during next 24 hours.

##### (ii) Sea condition

✓ Sea condition will be rough to very rough over northern parts of central Arabian Sea and northwest Arabian Sea during next 24 hours.

##### (iii) Fishermen Warning

✓ Fishermen are advised not to venture into northern parts of central Arabian Sea and northwest Arabian Sea during next 24 hours.

**The system is under continuous surveillance and the concerned state governments are being informed regularly.**

For details kindly visit [www.rsmcnewdelhi.imd.gov.in](http://www.rsmcnewdelhi.imd.gov.in), [www.imd.gov.in](http://www.imd.gov.in)

Contact: Cyclone Warning Division, Office of the Director General of Meteorology,  
India Meteorological Department, Ministry of Earth Sciences.

Phone: (91) 11-24652484, FAX: (91) 11-24643128, 24623220, E-mail: [cwdhq2008@gmail.com](mailto:cwdhq2008@gmail.com), Website: [rsmcnewdelhi.imd.gov.in](http://rsmcnewdelhi.imd.gov.in)

Spatial rainfall distribution: Isolated: <25%, A few: 26-50%, Many: 51-75%, Most: 76-100%

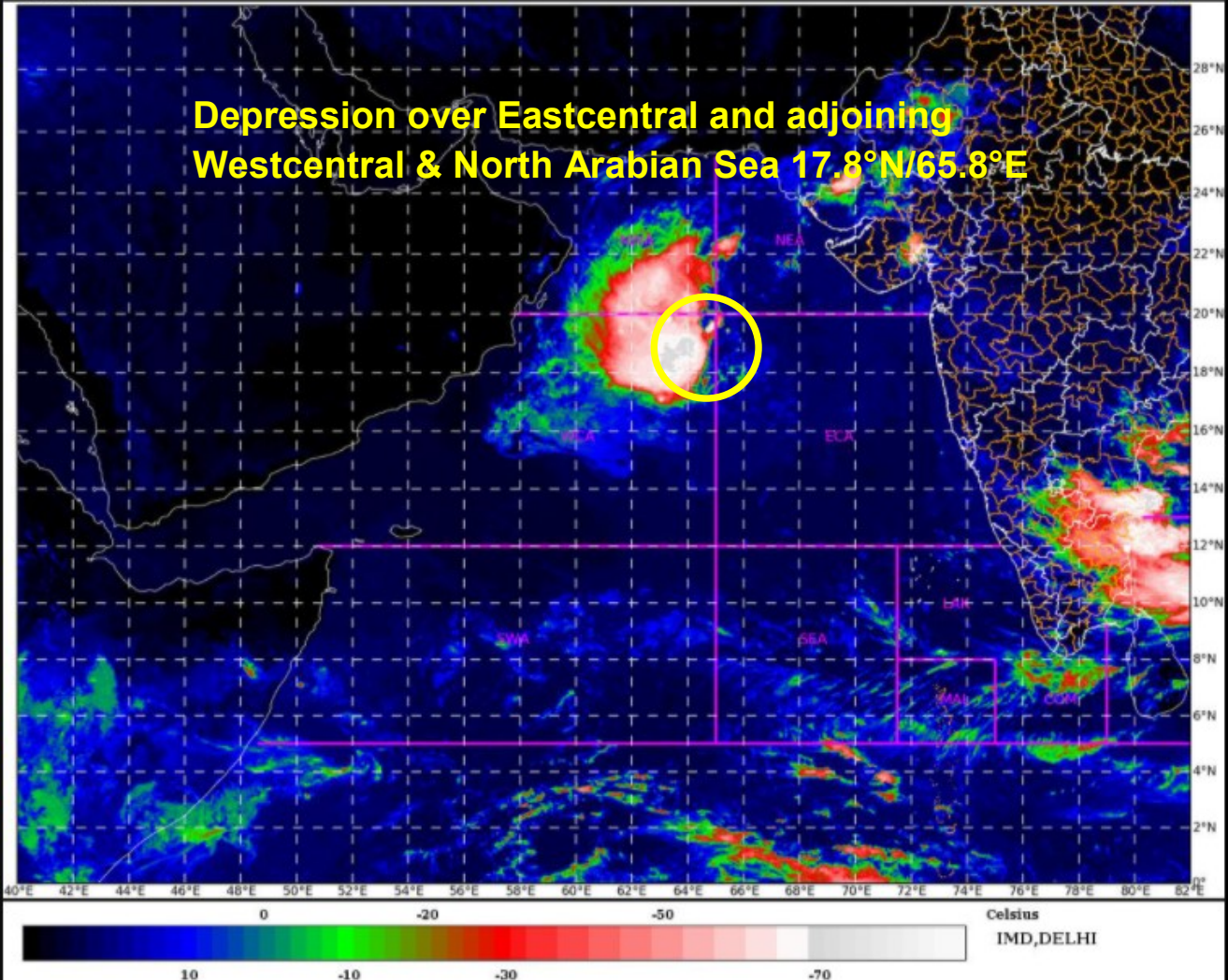
Rainfall amount (mm): Heavy rain: 64.5 – 115.5, Very heavy rain: 115.6 – 204.4, Extremely heavy rain: 204.5 or more.

SAT : INSAT-3DR IMG  
IMG\_TIR1\_TEMP 10.8 um  
ARABIAN\_SEA

18-10-2020(0515 to 0542) GMT  
18-10-2020(1045 to 1112) IST



**Depression over Eastcentral and adjoining  
Westcentral & North Arabian Sea 17.8°N/65.8°E**



Contact: Cyclone Warning Division, Office of the Director General of Meteorology,  
India Meteorological Department, Ministry of Earth Sciences.

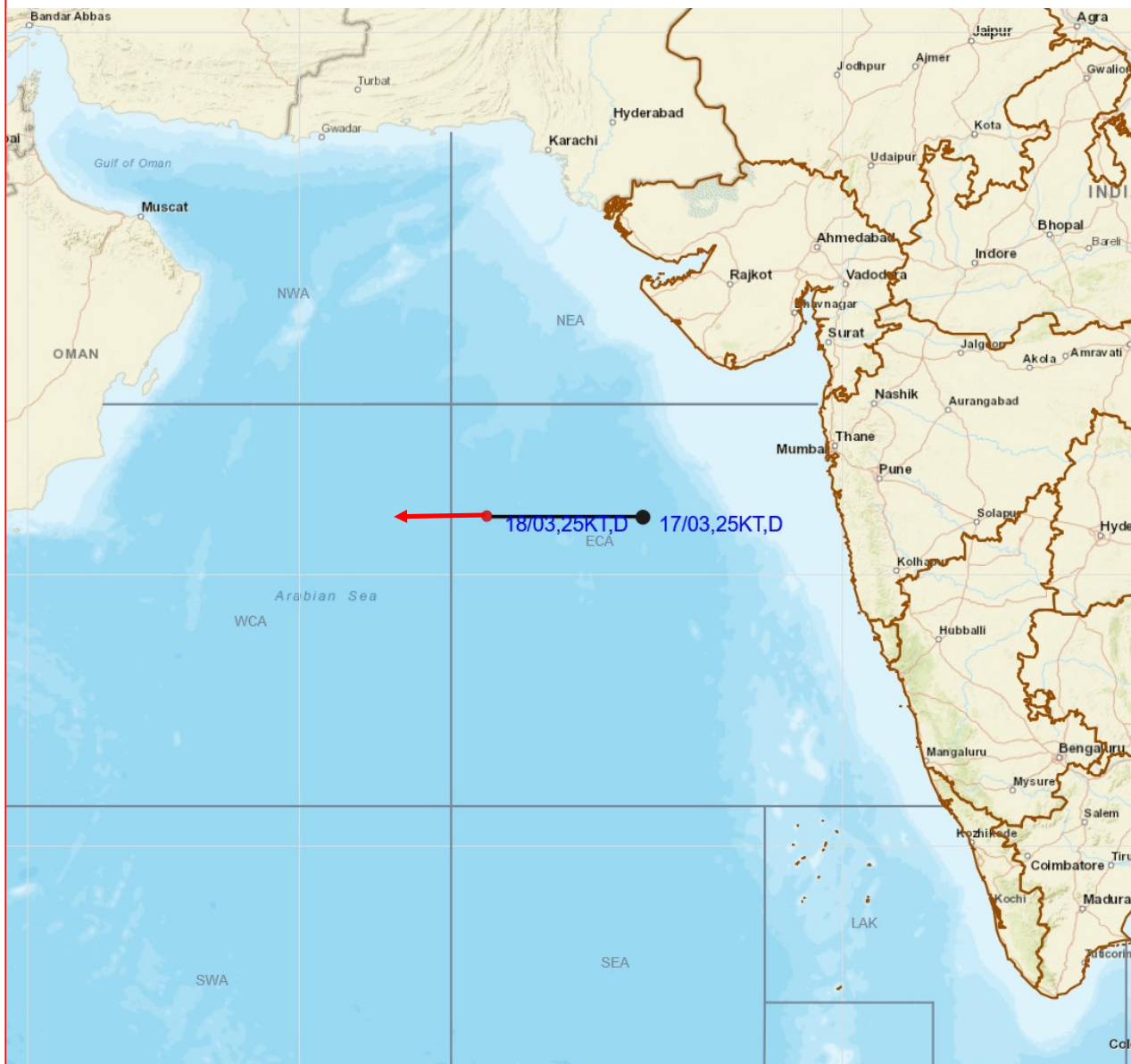
Phone: (91) 11-24652484, FAX: (91) 11-24643128, 24623220, E-mail: [cwdhq2008@gmail.com](mailto:cwdhq2008@gmail.com), Website: [rsmcnewdelhi.imd.gov.in](http://rsmcnewdelhi.imd.gov.in)

Spatial rainfall distribution: Isolated: <25%, A few: 26-50%, Many: 51-75%, Most: 76-100%

Rainfall amount (mm): Heavy rain: 64.5 – 115.5, Very heavy rain: 115.6 – 204.4, Extremely heavy rain: 204.5 or more.



## OBSERVED AND FORECAST TRACK OF DEPRESSION OVER EASTCENTRAL AND ADJOINING WESTCENTRAL & NORTH ARABIAN SEA BASED ON 0300 UTC OF 18<sup>TH</sup> OCT, 2020



DATE/TIME IN UTC

IST=UTC + 0530

L: LOW PRESSURE AREA

WML: WELL MARKED LOW PRESSURE AREA

D: DEPRESSION (17-27 KT)

DD: DEEP DEPRESSION (28-33 KT)

CS: CYCLONIC STORM (34-47 KT)

SCS: SEVERE CYCLONIC STORM (48-63KT)

VSCS: VERY SEVERE CYCLONIC STORM (64-89 KT)

ESCS: EXTREMELY SEVERE CYCLONIC STORM (90-119 KT)

SuCS: SUPER CYCLONIC STORM  $\geq 120$  KT



LESS THAN 34 KT



34.47 KT



$\geq 48$  KT



OBSERVED TRACK



FORECAST TRACK



CONE OF UNCERTAINTY

Contact: Cyclone Warning Division, Office of the Director General of Meteorology,  
India Meteorological Department, Ministry of Earth Sciences.

Phone: (91) 11-24652484, FAX: (91) 11-24643128, 24623220, E-mail: [cwdhq2008@gmail.com](mailto:cwdhq2008@gmail.com), Website: [rsmcnewdelhi.imd.gov.in](http://rsmcnewdelhi.imd.gov.in)

Spatial rainfall distribution: Isolated: <25%, A few: 26-50%, Many: 51-75%, Most: 76-100%

Rainfall amount (mm): Heavy rain: 64.5 – 115.5, Very heavy rain: 115.6 – 204.4, Extremely heavy rain: 204.5 or more.