



Government of India  
Ministry of Earth Sciences



India Meteorological Department

## PRESS RELEASE - 4

Time of issue: 1800 hours IST

Dated: 23-10-2020

**Sub: Depression over northwest Bay of Bengal crossed West Bengal – Bangladesh coast and lay centered over Bangladesh**

**Yesterday's** depression over **northwest Bay of Bengal** moved north-northeastwards, crossed West Bengal and adjoining Bangladesh coasts over Sundarbans near latitude 21.8°N and longitude 88.5°E around noon (between 1130 & 1230 hrs IST) of today, the 23<sup>rd</sup> October 2020 as a depression with maximum sustained wind speed of 45-55 kmph gusting to 65 kmph.

It moved across 24 Parganas Districts of West Bengal and lay centred at 1430 hrs IST of today, the 23<sup>rd</sup> October, 2020 over Bangladesh, near latitude 22.5°N and longitude 89.1°E, about 140 km northeast of Sagar Islands (West Bengal) and 130 km west-northwest of Khepupara (Bangladesh) and about 190 km southwest of Dhaka (Bangladesh).

It is very likely to move further north-northeastwards maintaining the intensity of Depression for next 12 hours and weaken thereafter into a Well Marked Low pressure area over Bangladesh.

Forecast track and intensity are given in the following table:

Date/Time(IST)	Position (Lat. °N/ long. °E)	Maximum sustained surface wind speed (kmph)	Category of cyclonic disturbance
23.10.20/1430	22.5/89.1	45-55 gusting to 65	Depression
23.10.20/1730	23.0/89.4	30-40 gusting to 50	Depression
24.10.20/0530	24.0/90.1	20-30 gusting to 40	Well Marked Low

### Warnings:

#### (i) Rainfall warning (for north-eastern States)

- ✓ **23<sup>rd</sup> October 2020:** Light to moderate rainfall at most places with heavy to very heavy falls (**115.6-204.4 mm/day**) at a few places and extremely heavy falls (**>200 mm / Day**) at isolated places very likely over Tripura, heavy to very heavy falls at a few places Nagaland, Manipur, Mizoram, south Assam & Meghalaya. Light to moderate rainfall at many places with heavy rainfall at isolated places likely over remaining districts of Assam.
- ✓ **24<sup>th</sup> October 2020:** Light to moderate rainfall at many places with **Isolated heavy falls** likely over Assam, Meghalaya, Nagaland, Manipur, Mizoram & Tripura

#### (ii) Wind warning

- ✓ Squally winds speed reaching 45-55 kmph gusting to 65 kmph would occur over North Bay of Bengal during next 12 hours.

Contact: Cyclone Warning Division, Office of the Director General of Meteorology,  
India Meteorological Department, Ministry of Earth Sciences.

Phone: (91) 11-24652484, FAX: (91) 11-24643128, 24623220, E-mail: [cwdhq2008@gmail.com](mailto:cwdhq2008@gmail.com), Website: [rsmcnewdelhi.imd.gov.in](http://rsmcnewdelhi.imd.gov.in)

Spatial rainfall distribution: Isolated: <25%, A few: 26-50%, Many: 51-75%, Most: 76-100%

Rainfall amount (mm): Heavy rain: 64.5 – 115.5, Very heavy rain: 115.6 – 204.4, Extremely heavy rain: 204.5 or more.

- ✓ Squally wind speed reaching 40-50 kmph gusting to 60 Kmph also very likely off north Odisha coast during next 06 hours and 45-55 kmph gusting to 65 kmph along & off West Bengal-Bangladesh coasts during next 12 hours.

### **(iii) Sea condition**

- ✓ Sea condition will be rough to very rough over North Bay of Bengal during next 12 hours.
- ✓ Sea condition will be rough to very rough along & off north Odisha-West Bengal-Bangladesh coasts during next 12 hours.

### **(iv) Fishermen Warning**

Fishermen are advised not to venture into North Bay of Bengal and along & off West Bengal-Bangladesh coasts during next 12 hours and off Odisha coast during next 06 hours.

### **(v) Impact expected over south Assam, east Meghalaya, Nagaland, Manipur, Mizoram & Tripura on 23<sup>rd</sup> October, 2020:**

- Localized Flooding of roads, water logging in low lying areas and closure of underpasses mainly in urban areas of the above region.
- Possibility of Landslides in hilly areas of Northeastern states.
- Occasional reduction in visibility due to heavy rainfall.
- Disruption of traffic in cities.
- Minor damage to kutcha roads.
- Possibilities of damage to vulnerable structure.
- Damage to horticulture and standing crops in some areas due to inundation and squally winds.
- It may lead to riverine flooding in some river catchments (for riverine flooding. Kindly visit website of Central Water Commission (<http://www.cwc.gov.in/>))

-For specific district wise impact kindly visit IMD's state level meteorological center websites ([https://mausam.imd.gov.in/imd\\_latest/contents/departamentalweb.php](https://mausam.imd.gov.in/imd_latest/contents/departamentalweb.php)) and national website (<https://mausam.imd.gov.in/>).

### **(vi) Action Suggested:**

- Attempt to protect Wildlife, Flora, Fauna, Sanctuaries in Sundarbans.
- Check for traffic congestion on your route before leaving for your destination.
- Follow any traffic advisories that are issued in this regard.
- Avoid going to areas that face water logging problem and squally winds.
- Avoid staying in vulnerable structure

**The system is under continuous surveillance and the concerned state governments are being informed regularly.**

Kindly visit [www.rsmcnewdelhi.imd.gov.in](http://www.rsmcnewdelhi.imd.gov.in) and [www.mausam.imd.gov.in](http://www.mausam.imd.gov.in) for updates on the system.

---

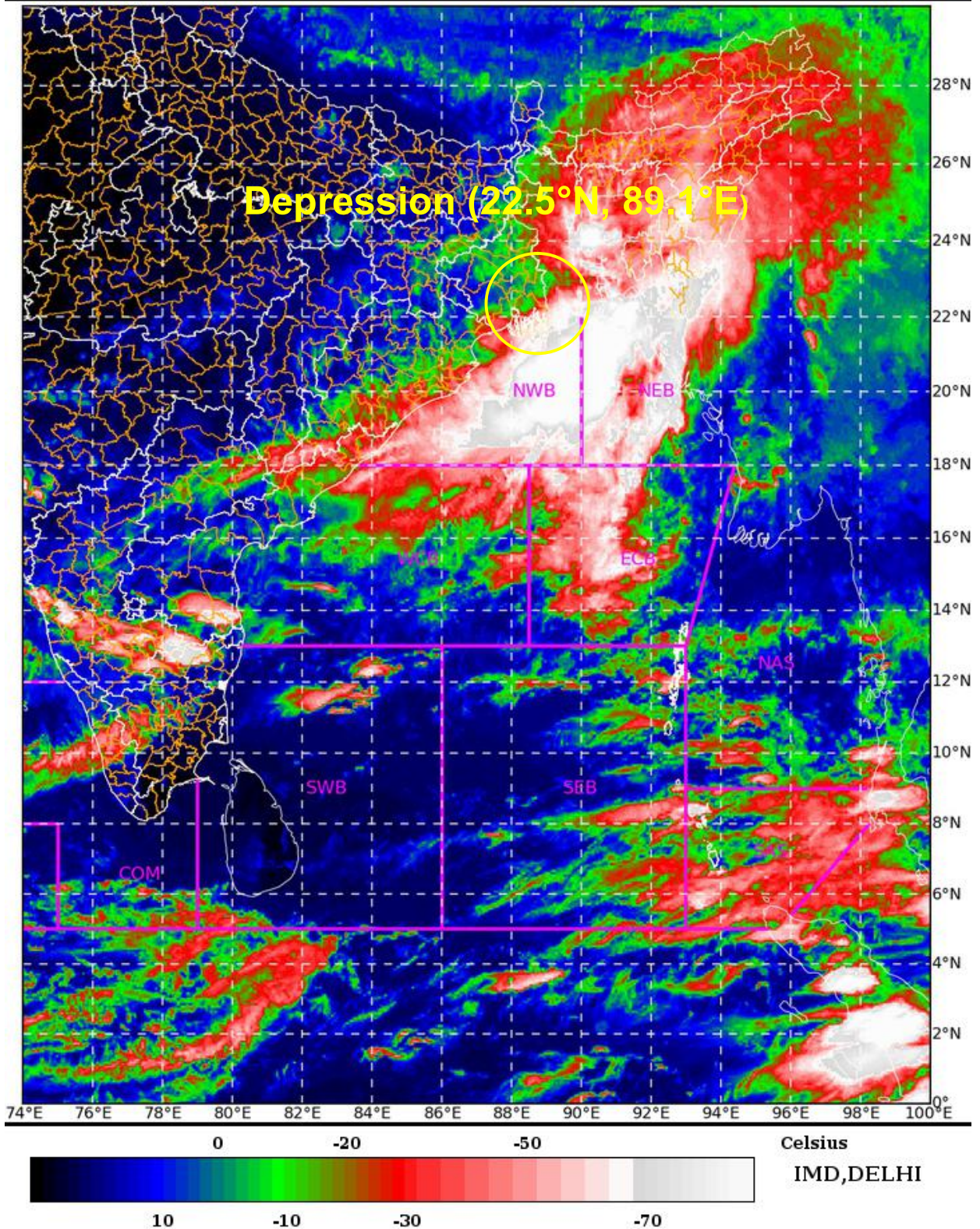
Contact: Cyclone Warning Division, Office of the Director General of Meteorology, India Meteorological Department, Ministry of Earth Sciences.

Phone: (91) 11-24652484, FAX: (91) 11-24643128, 24623220, E-mail: [cwdhq2008@gmail.com](mailto:cwdhq2008@gmail.com), Website: [rsmcnewdelhi.imd.gov.in](http://rsmcnewdelhi.imd.gov.in)

Spatial rainfall distribution: Isolated: <25%, A few: 26-50%, Many: 51-75%, Most: 76-100%

Rainfall amount (mm): Heavy rain: 64.5 – 115.5, Very heavy rain: 115.6 – 204.4, Extremely heavy rain: 204.5 or more.

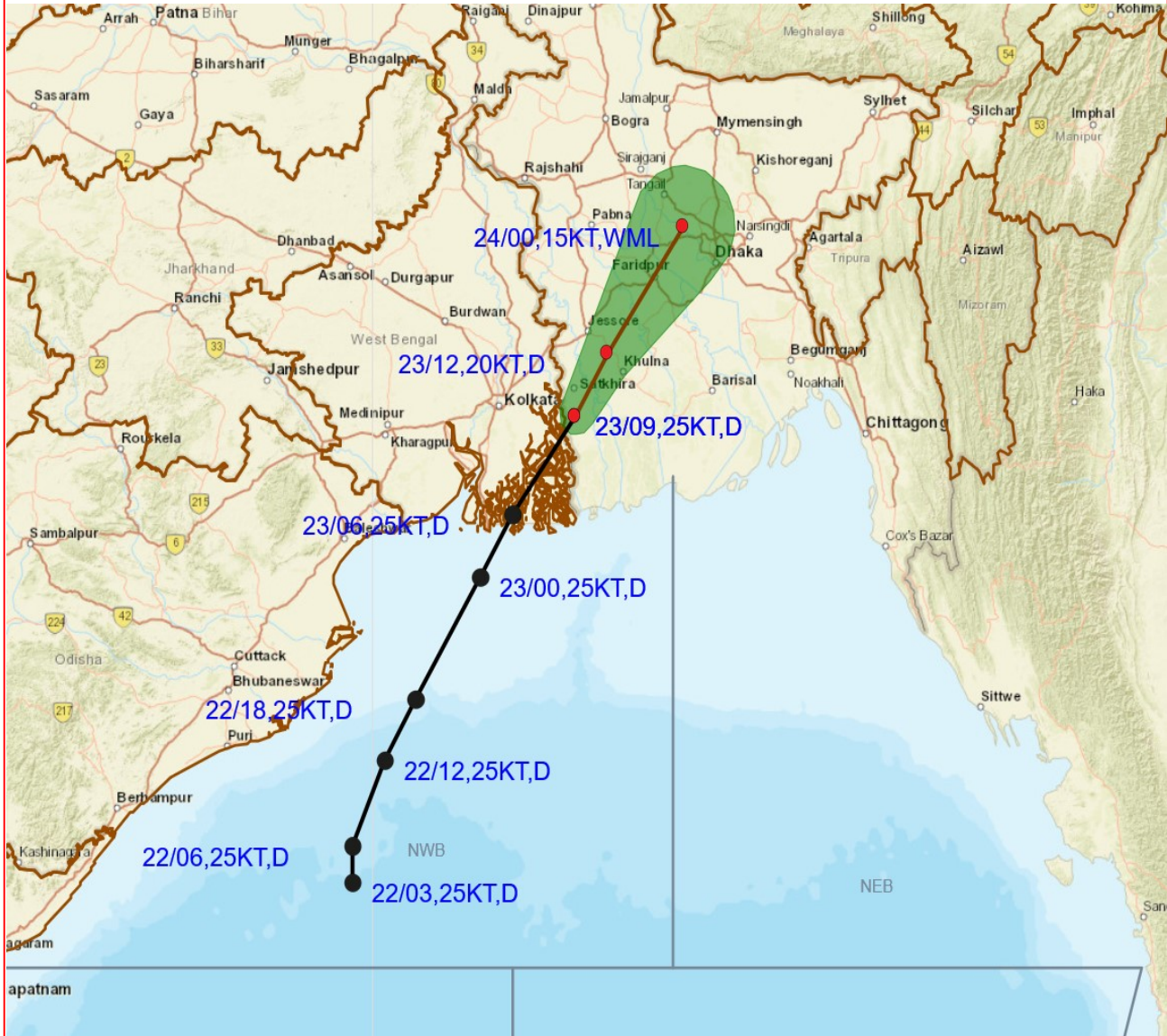
SAT : INSAT-3D IMG      23-10-2020/(1030 to 1056) GMT  
IMG\_TIR1\_TEMP 10.8 um    23-10-2020/(1600 to 1626) IST  
L1C Mercator



Contact: Cyclone Warning Division, Office of the Director General of Meteorology,  
India Meteorological Department, Ministry of Earth Sciences.  
Phone: (91) 11-24652484, FAX: (91) 11-24643128, 24623220, E-mail: [cwdhq2008@gmail.com](mailto:cwdhq2008@gmail.com), Website: [rsmcnewdelhi.imd.gov.in](http://rsmcnewdelhi.imd.gov.in)  
Spatial rainfall distribution: Isolated: <25%, A few: 26-50%, Many: 51-75%, Most: 76-100%  
Rainfall amount (mm): Heavy rain: 64.5 – 115.5, Very heavy rain: 115.6 – 204.4, Extremely heavy rain: 204.5 or more.



## OBSERVED AND FORECAST TRACK ALONGWITH CONE OF UNCERTAINTY OF DEPRESSION OVER BAY OF BENGAL BASED ON 0900 UTC OF 23<sup>rd</sup> OCTOBER 2020



DATE/TIME IN UTC  
 IST=UTC + 0530  
 L: LOW PRESSURE AREA  
 WML: WELL MARKED LOW PRESSURE AREA  
 D: DEPRESSION (17-27 KT)  
 DD: DEEP DEPRESSION (28-33 KT)  
 CS: CYCLONIC STORM (34-47 KT)  
 SCS: SEVERE CYCLONIC STORM (48-63KT)  
 VSCS: VERY SEVERE CYCLONIC STORM (64-89 KT)  
 ESCS: EXTREMELY SEVERE CYCLONIC STORM (90-119 KT)  
 SuCS: SUPER CYCLONIC STORM ( $\geq$  120 KT)

● LESS THAN 34 KT  
 ⚡ 34-47 KT  
 ⚡  $\geq$  48 KT  
 — OBSERVED TRACK  
 — FORECAST TRACK  
 ▲ CONE OF UNCERTAINTY

Co

India Meteorological Department, Ministry of Earth Sciences.

Phone: (91) 11-24652484, FAX: (91) 11-24643128, 24623220, E-mail: [cwdhq2008@gmail.com](mailto:cwdhq2008@gmail.com), Website: [rsmcnwdelhi.imd.gov.in](http://rsmcnwdelhi.imd.gov.in)

Spatial rainfall distribution: Isolated: <25%, A few: 26-50%, Many: 51-75%, Most: 76-100%

Rainfall amount (mm): Heavy rain: 64.5 – 115.5, Very heavy rain: 115.6 – 204.4, Extremely heavy rain: 204.5 or more.