



Government of India
Ministry of Earth Sciences



India Meteorological Department

PRESS RELEASE - 4

Time of issue: 1800 hours IST

Dated: 25-11-2020

Sub: Very Severe Cyclonic Storm “NIVAR” over southwest Bay of Bengal—(Cyclone Warning for Tamilnadu and Puducherry coasts- Red Message)

Yesterday's cyclonic storm “NIVAR” over southwest Bay of Bengal (BoB) moved west-northwestwards and intensified into a severe cyclonic storm in the midnight of yesterday, the 24th November, 2020. Moving further northwestwards, it further intensified into a very severe cyclonic storm in the afternoon (1430 hours IST) of today, the 25th November, 2020 and lay centered over southwest BoB near latitude 11.2°N and longitude 81.0°E, about 90 km east-southeast of Cuddalore, about 150 km east southeast of Puducherry and 220 km south southeast of Chennai.

It is very likely to move northwestwards and cross Tamil Nadu and Puducherry coasts between Karaikal and Mamallapuram around Puducherry during mid-night of 25th and early hours of 26th November 2020 as a very severe cyclonic storm with a wind speed of 120-130 kmph gusting to 145 kmph.

The Cyclone is being monitored by Doppler Weather Radar at Chennai, Karaikal and Sriharikota.

Forecast track and intensity are given below:

| Date/Time(IST) | Position (Lat. °N/ long. °E) | Maximum sustained surface wind speed (Kmph) | Category of cyclonic disturbance |
|----------------|---------------------------------|--|-------------------------------------|
| 25.11.20/1430 | 11.2/81.0 | 115-125 gusting to 140 | Very Severe Cyclonic Storm |
| 25.11.20/1730 | 11.5/80.6 | 120-130 gusting to 145 | Very Severe Cyclonic Storm |
| 25.11.20/2330 | 12.0/80.0 | 120-130 gusting to 145 | Very Severe Cyclonic Storm |
| 26.11.20/0530 | 12.5/79.4 | 90-100 gusting to 110 | Severe Cyclonic Storm |
| 26.11.20/1130 | 13.0/79.0 | 55-65 gusting to 75 | Deep Depression |
| 26.11.20/2330 | 13.7/78.5 | 35-45 gusting to 55 | Depression |

Warnings:

(i) Rainfall

Fairly widespread to widespread rainfall/thunderstorm activity very likely over coastal and north interior Tamilnadu, Puducherry & Karaikal, south coastal Andhra Pradesh and Rayalaseema during 25th and 26th November and southeast Telangana during 26th November, 2020. Isolated extremely heavy rainfall activity also very likely over coastal & north interior Tamilnadu & Puducherry (Thanjavur, Tiruvarur, Nagapattinam, Cuddalore, Chennai, Kanchipuram, Chengalpattu, Myladuthirai, Ariyalur, Perambalur, Kallakurchi, Villupuram, Tiruvannamalai, Puducherry and Karaikal districts) during 25th; over Nellore and Chittoor districts of Andhra Pradesh on 25th and over Ranipet, Tiruvannamalai, Tirupattur, Vellore districts of Tamilnadu; Chittoor, Kurnool, Prakasam and Cuddappa districts of Andhra Pradesh and adjoining southeast Telangana on 26th November, 2020.

Contact: Cyclone Warning Division, Office of the Director General of Meteorology,
India Meteorological Department, Ministry of Earth Sciences.

Phone: (91) 11-24652484, FAX: (91) 11-24643128, 24623220, E-mail: cwdhq2008@gmail.com, Website: rsmcnwdelhi.imd.gov.in

Spatial rainfall distribution: Isolated: <25%, A few: 26-50%, Many: 51-75%, Most: 76-100%

Rainfall amount (mm): Heavy rain: 64.5 – 115.5, Very heavy rain: 115.6 – 204.4, Extremely heavy rain: 204.5 or more.

| Sub-Divisions | 25 Nov 2020* | 26 Nov 2020* | 27 Nov 2020* |
|--|--|---|-------------------------|
| South Coastal Andhra Pradesh | Rainfall at most places with isolated heavy to very heavy and extremely heavy falls | Rainfall at most places with isolated heavy to very heavy and extremely heavy falls | Rainfall at many places |
| Coastal & North Interior Tamilnadu, Puducherry & Karaikal | Rainfall at most places with heavy to very heavy rainfall at a few places and extremely heavy falls at isolated places | Rainfall at many places with heavy rainfall at isolated places | Rainfall at many places |
| South Interior Karnataka | Rainfall at many places with heavy rainfall at isolated places | Rainfall at many places with heavy rainfall at isolated places | Rainfall at many places |
| Rayalaseema | Rainfall at most places with heavy to very heavy rainfall with extremely heavy falls at isolated places | Rainfall at most places with heavy to very heavy rainfall at a few places and extremely heavy falls at isolated places | Rainfall at many places |
| Telangana | Rainfall at a few places | Rainfall at most places with heavy to very heavy rainfall and extremely heavy falls at isolated places over southeast Telangana | Rainfall at many places |

(ii) Wind warning

- Gale wind speed reaching 115-125 kmph gusting to 140 kmph is prevailing over Southwest Bay of Bengal. It would further increase becoming 120-130 kmph gusting to 145 kmph from evening of 25th to early hours of 26th November.
- Gale wind speed reaching 60-70 kmph gusting to 80 kmph is prevailing along & off north Tamil Nadu, and Puducherry Karaikal coast and squally wind speed reaching 30-40 kmph gusting to 50 kmph along and off south Tamilnadu and south Andhra Pradesh coast and over Gulf of Mannar. It will gradually increase and become gale wind speed reaching 120-130 kmph gusting to 145 kmph along & off coastal districts of north Tamil Nadu and Puducherry (**Nagapattinam, Karaikal, Myladuthurai, Cuddalore, Puducherry, Villupuram & Chengalpattu**) and 80-90 gusting to 100 kmph very likely over Tiruvarur, Kanchipuram, Chennai, Tiruvallur districts during night of 25th to early hrs of 26th November, 2020.
- Gale wind speed reaching 65-75 kmph gusting to 85 kmph very likely over adjoining westcentral Bay of Bengal and along & off South Andhra Pradesh (Nellore & Chittoor districts), Gulf of Mannar and along and off south coastal districts of Tamil Nadu during night of 25th to early hrs of 26th November, 2020.

(iii) Sea condition

- Sea condition is very high over Southwest Bay of Bengal and very rough to high along & off Tamil Nadu, Puducherry, south Andhra Pradesh coasts and over Gulf of Mannar. It would

Contact: Cyclone Warning Division, Office of the Director General of Meteorology,
India Meteorological Department, Ministry of Earth Sciences.

Phone: (91) 11-24652484, FAX: (91) 11-24643128, 24623220, E-mail: cwdhq2008@gmail.com, Website: rsmcnnewdelhi.imd.gov.in

Spatial rainfall distribution: Isolated: <25%, A few: 26-50%, Many: 51-75%, Most: 76-100%

Rainfall amount (mm): Heavy rain: 64.5 – 115.5, Very heavy rain: 115.6 – 204.4, Extremely heavy rain: 204.5 or more.

gradually become phenomenal over Southwest Bay of Bengal and along & off north Tamil Nadu, Puducherry coasts during afternoon of 25th to early hrs of 26th November, 2020.

•
(iv) Strom Surge Warning

- Tidal wave of about 1-1.5m height above the astronomical tide is very likely to inundate the low lying areas of north coastal districts of Tamilnadu & Puducherry near the place of landfall.

(v) (a) Damage expected over Nagapattinam, Myladuthurai, Cuddalore, , Villupuram & Chengalpattu districts of Tamilnadu and Karaikal & Puducherry:

- Total destruction of thatched houses/ extensive damage to kutcha houses. Some damage to old pucca houses. Potential threat from flying objects.
- Bending/ uprooting of power and communication poles.
- Major damage to Kutcha and and Pucca roads. Flooding of escape routes. Disruption of railways, overhead powerlines and signalling systems.
- Widespread damage to standing crops, plantations, orchards, falling of green coconuts and tearing of palm fronds. Blowing down of bushy trees like mango.
- Small boats, country crafts may get detached from moorings.
- Visibility severely affected.

(b) Damage expected over Tiruvarur, Kanchipuram, Chennai, Tiruvallaur districts of Tamilnadu and adjoining Andhra Pradesh:

- Damage to thatched houses/ huts with possibility of roof tops being blown off and unattached metal sheets may fly.
- Damage to power and communication lines.
- Damage to Kutcha and some damage to Pucca roads. Flooding of escape routes.
- Breaking of tree branches, uprooting of trees. Severe damage to banana and papaya trees, horticulture and crops & orchards. Large dead limbs blown from trees.
- Major damage to coastal crops. Damage to embankments/ salt pans.

(vi) Fishermen Warning & Action Suggested:

- Total suspension of fishing operations.
- Mobilise evacuation from coastal areas. Coastal hutment dwellers to be moved to safer places.
- People in affected areas to remain in safe places and indoors.
- Judicious regulation of rail, road and air traffic.
- Movement in motor boats and small ships unsafe.

(vii) POST LANDFALLOUTLOOK FOR INTERIOR DISTRICTS (RANIPET, TIRUVANNAMALAI, TIRUPATTUR, VELLORE AND CHITTOOR)

1. Even after landfall, the system is likely to maintain its cyclone intensity for about 6 hours and weaken gradually.
2. Under its influence rainfall at most/many places with heavy to very heavy falls at a few places with isolated extremely heavy falls likely to occur over Ranipet, Tiruvannamalai, Tirupattur, Vellore districts of Tamilnadu and Chittoor, Kurnool, Prakasam; Cuddappa districts of Andhra Pradesh and adjoining southeast Telangana on 26.th Nov. Heavy to very heavy rainfall at isolated paces likely over remaining districts of north interior Tamilnadu, south Andhra Pradesh and southeast Telangana.

3. Gale wind speed reaching 65-75 kmph gusting to 85 kmph very likely to prevail over interior districts (Ranipet, Tiruvannamalai, Tirupattur, Vellore) of Tamilnadu and Chittoor district of Andhra Pradesh during 26th Nov early morning to forenoon.
4. **Damage expected over Ranipet, Tiruvannamalai, Tirupattur, Vellore districts of Tamilnadu and Chittoor, Kurnool, Prakasam and Cuddappa districts of Andhra Pradesh:**
 - Partial damage to thatched houses/ huts with possibility of roof tops being blown off and unattached metal sheets may fly.
 - Partial damage to power and communication lines.
 - Damage to Kutcha and some damage to Pucca roads. Flooding of escape routes.
 - Breaking of tree branches, uprooting of small trees. Damage to banana and papaya trees, horticulture and crops & orchards.
5. **People are advised to remain indoors/in safe places and cooperate with state government officials and disaster management agencies.**

The system is under continuous surveillance and the concerned state governments are being informed regularly.

For details kindly visit www.rsmcnewdelhi.imd.gov.in, www.mausam.imd.gov.in

SAT : INSAT-3D IMG

25-11-2020/(1000 to 1026) GMT

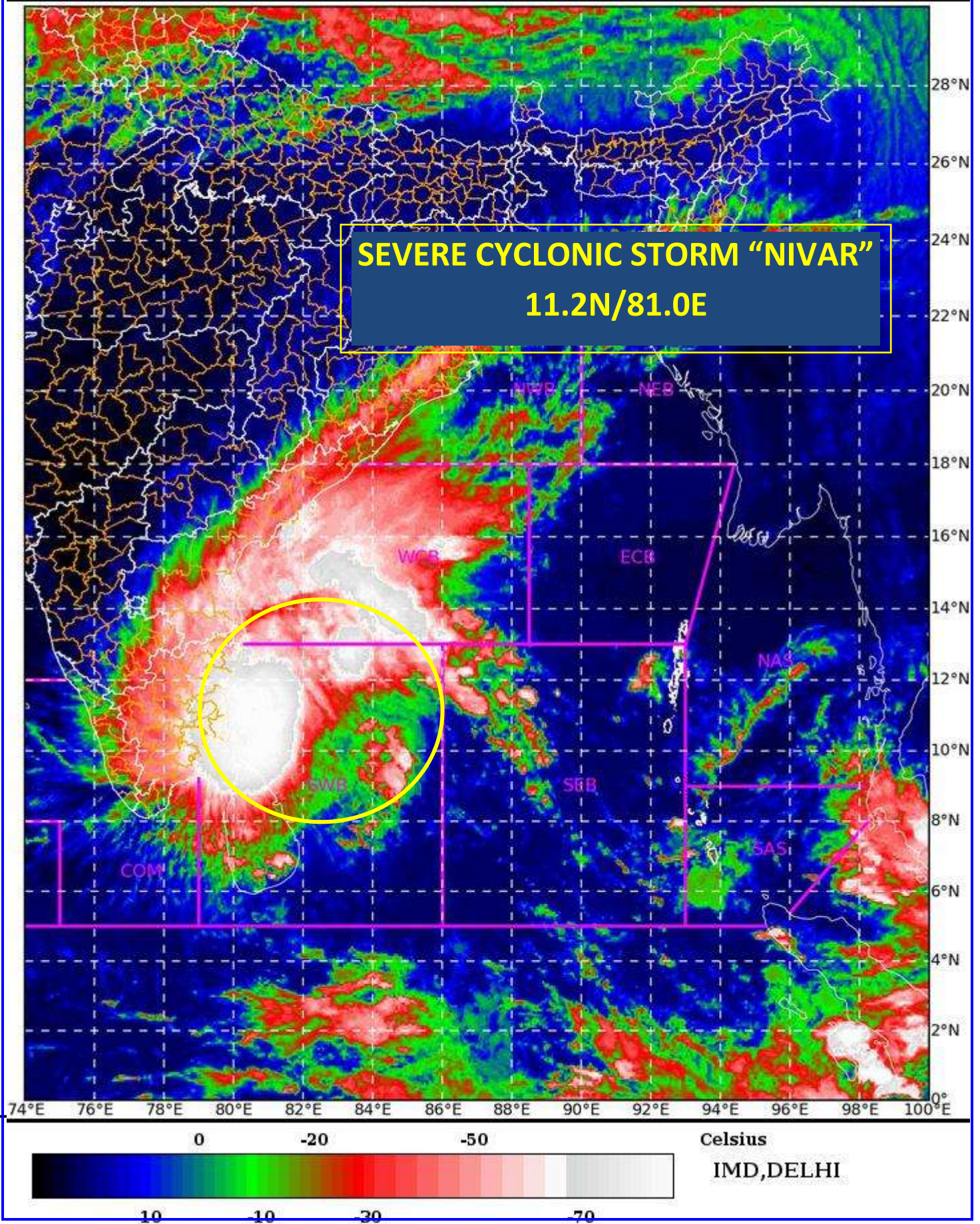
IMG_TIR1_TEMP 10.8 um

25-11-2020/(1530 to 1556) IST

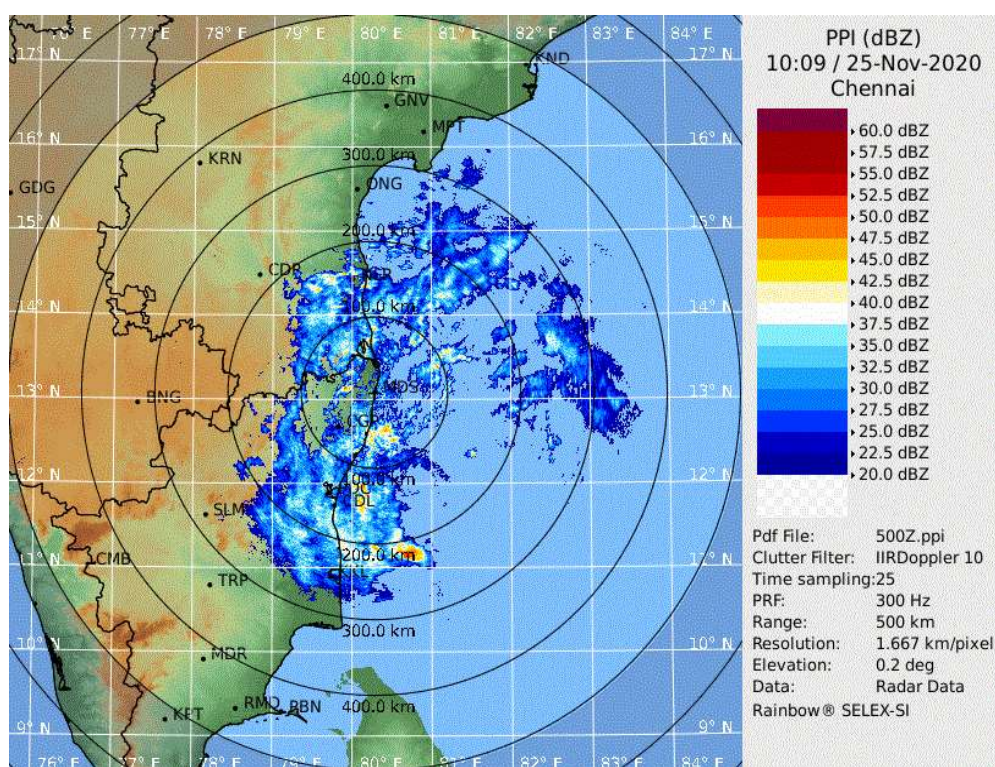
L1C Mercator



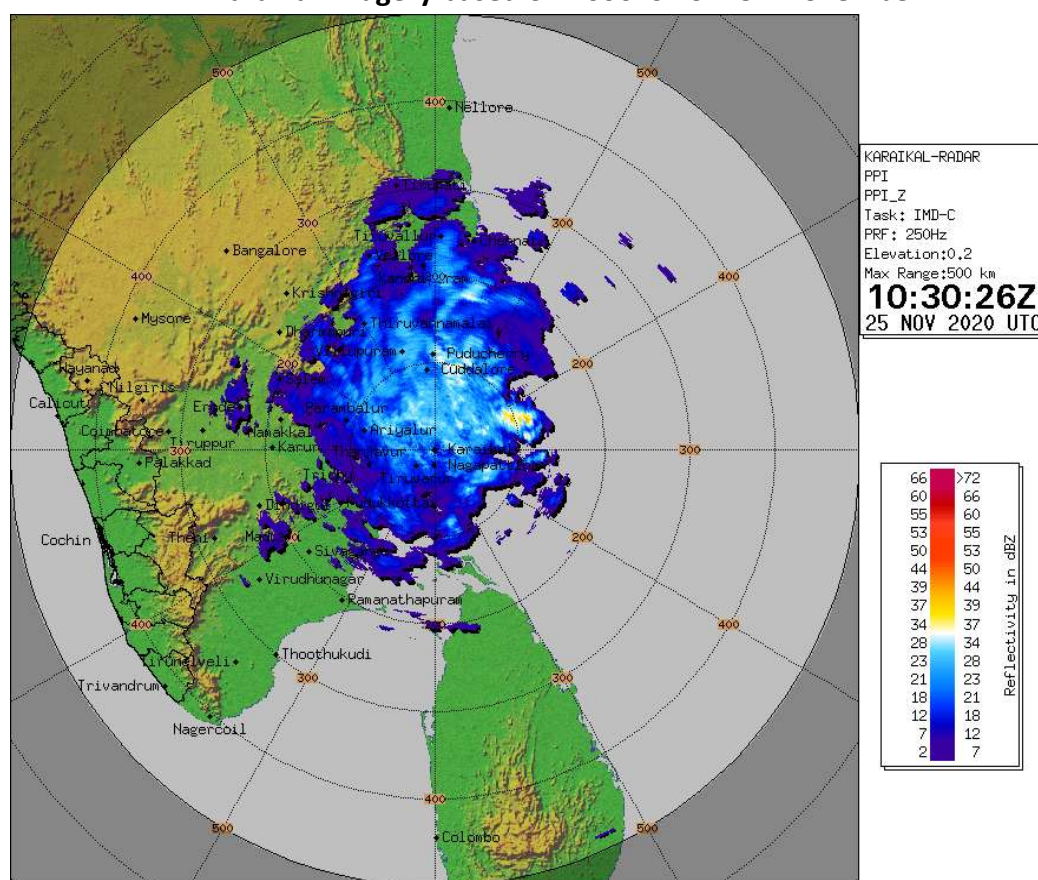
SEVERE CYCLONIC STORM "NIVAR"
11.2N/81.0E



DWR Chennai Imagery based on 1539 IST of 25th November



DWR Karaikal Imagery based on 1600 IST of 25th November



Contact: Cyclone Warning Division, Office of the Director General of Meteorology,
India Meteorological Department, Ministry of Earth Sciences.

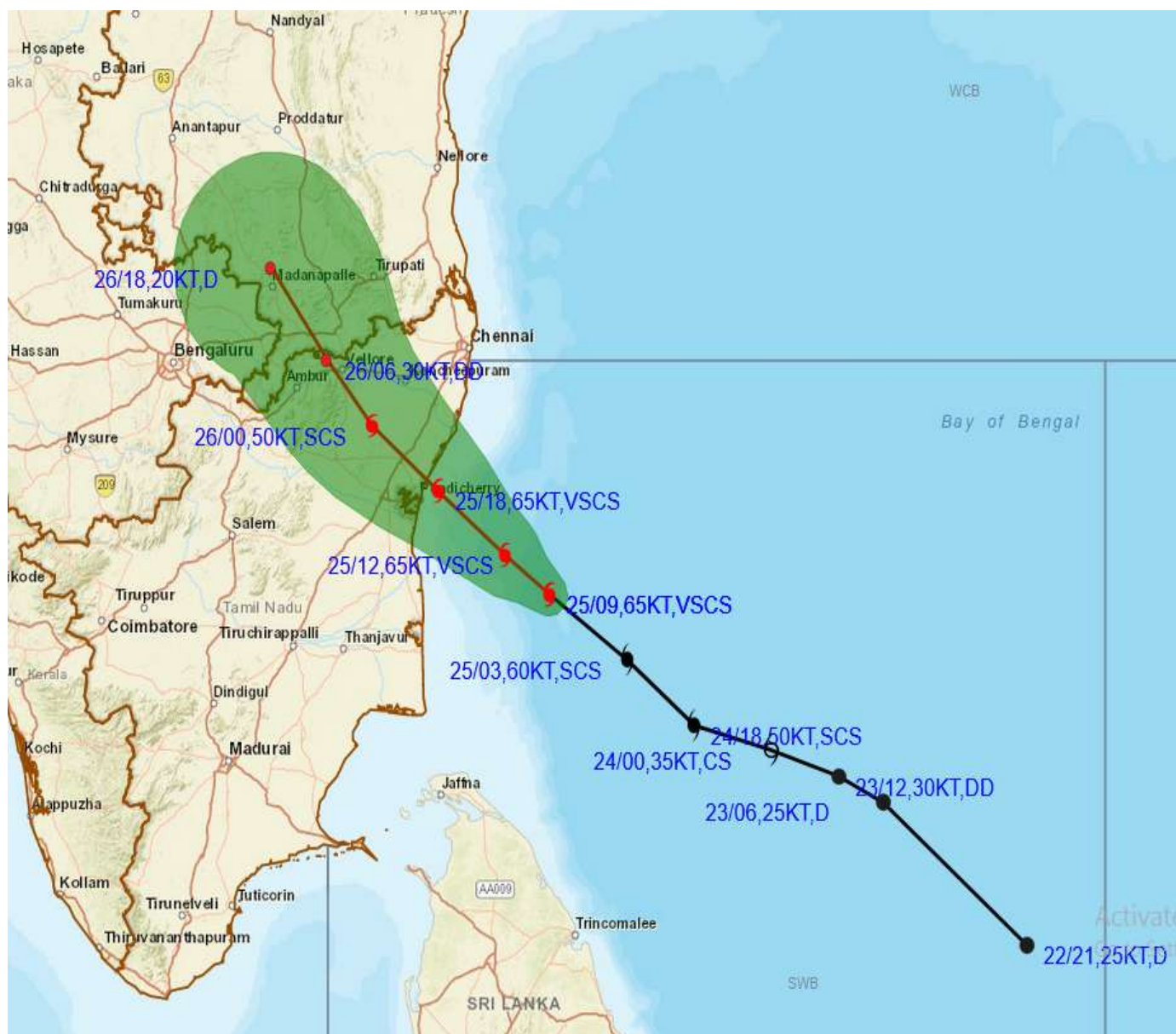
Phone: (91) 11-24652484, FAX: (91) 11-24643128, 24623220, E-mail: cwdhq2008@gmail.com, Website: rsmcnewdelhi.imd.gov.in

Spatial rainfall distribution: Isolated: <25%, A few: 26-50%, Many: 51-75%, Most: 76-100%

Rainfall amount (mm): Heavy rain: 64.5 – 115.5, Very heavy rain: 115.6 – 204.4, Extremely heavy rain: 204.5 or more.



OBSERVED AND FORECAST TRACK ALONGWITH CONE OF UNCERTAINTY OF VERY SEVERE CYCLONIC STORM NIVAR OVER SOUTHWEST BAY OF BENGAL BASED ON 0900UTC OF 25TH NOVEMBER, 2020.



DATE/TIME IN UTC

IST=UTC + 0530

L: LOW PRESSURE AREA

WML: WELL MARKED LOW PRESSURE AREA

D: DEPRESSION (17-27 KT)

DD: DEEP DEPRESSION (28-33 KT)

CS: CYCLONIC STORM (34-47 KT)

SCS: SEVERE CYCLONIC STORM (48-63KT)

VSCS: VERY SEVERE CYCLONIC STORM (64-89 KT)

ESCS: EXTREMELY SEVERE CYCLONIC STORM (90-119 KT)

SuCS: SUPER CYCLONIC STORM (≥ 120 KT)

● LESS THAN 34 KT

○ 34-47 KT

● ≥ 48 KT

— OBSERVED TRACK

— FORECAST TRACK

▲ CONE OF UNCERTAINTY

Contact: Cyclone Warning Division, Office of the Director General of Meteorology,

India Meteorological Department, Ministry of Earth Sciences.

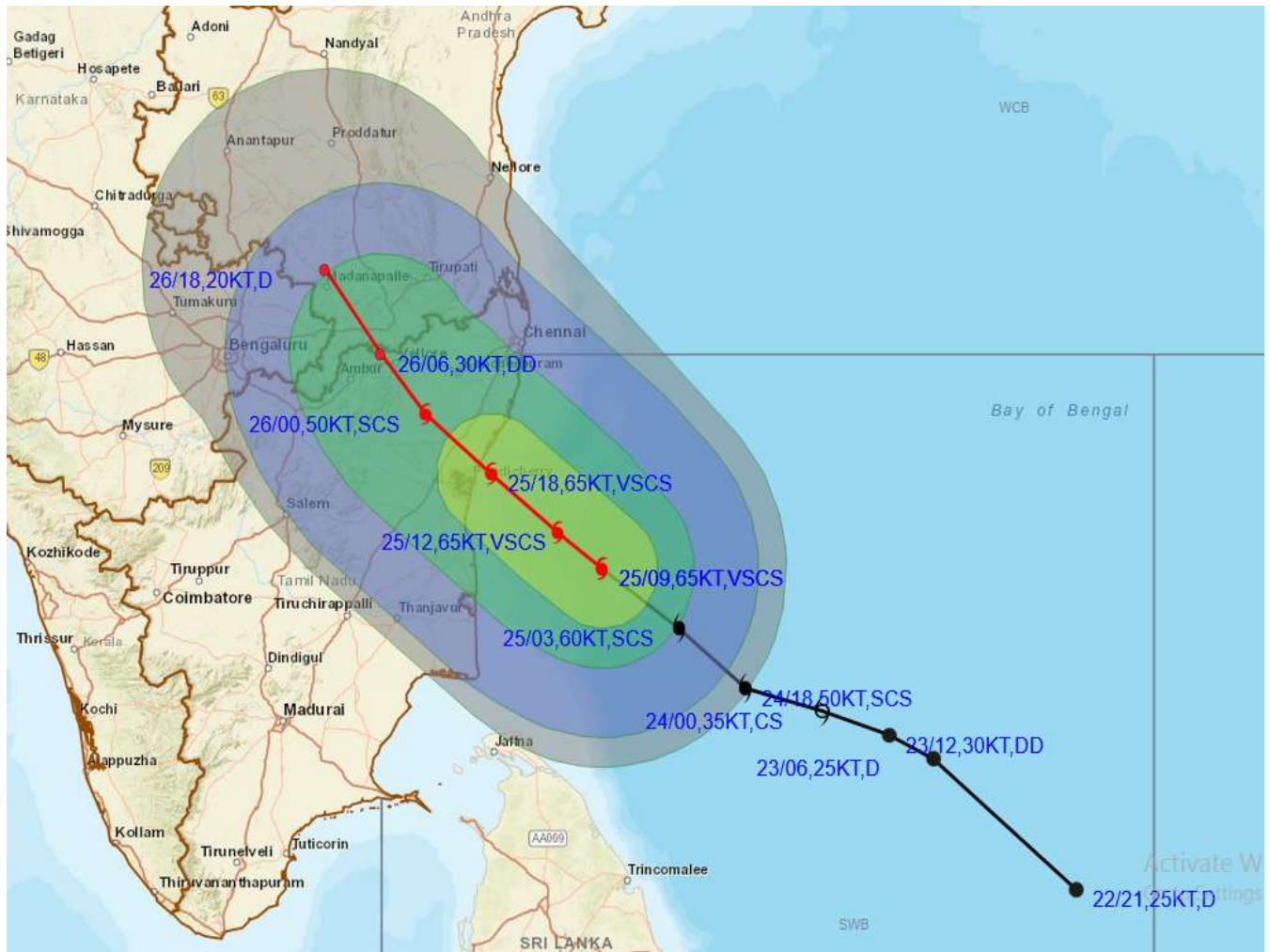
Phone: (91) 11-24652484, FAX: (91) 11-24643128, 24623220, E-mail: cwdhq2008@gmail.com, Website: rsmcnnewdelhi.imd.gov.in

Spatial rainfall distribution: Isolated: <25%, A few: 26-50%, Many: 51-75%, Most: 76-100%

Rainfall amount (mm): Heavy rain: 64.5 – 115.5, Very heavy rain: 115.6 – 204.4, Extremely heavy rain: 204.5 or more.



OBSERVED AND FORECAST TRACK ALONGWITH QUADRANT WIND DISTRIBUTION OF VERY SEVERE CYCLONIC STORM NIVAR OVER SOUTHWEST BAY OF BENGAL BASED ON 0900UTC OF 25TH NOVEMBER, 2020



DATE/TIME IN UTC
IST=UTC + 0530
L: LOW PRESSURE AREA
WML: WELL MARKED LOW PRESSURE AREA
D: DEPRESSION (17-27 KT)
DD: DEEP DEPRESSION (28-33 KT)
CS: CYCLONIC STORM (34-47 KT)
SCS: SEVERE CYCLONIC STORM (48-63KT)
VSCS: VERY SEVERE CYCLONIC STORM (64-89 KT)
ESCS: EXTREMELY SEVERE CYCLONIC STORM (90-119 KT)
SuCS: SUPER CYCLONIC STORM (≥ 120 KT)

• LESS THAN 34 KT
 ◐ 34.47 KT
 ◑ ≥ 48 KT
 — OBSERVED TRACK
 — FORECAST TRACK
 ▲ CONE OF UNCERTAINTY
AREA OF MAXIMUM SUSTAINED WIND SPEED:
 ■ 28-33 KT (52-61 KMPH)
 ■ 34-49 KT (62-91 KMPH)
 ■ 50-63 KT (92-117 KMPH)
 ■ ≥ 64 KT (≥118 KMPH)

IMPACT OVER THE SEA

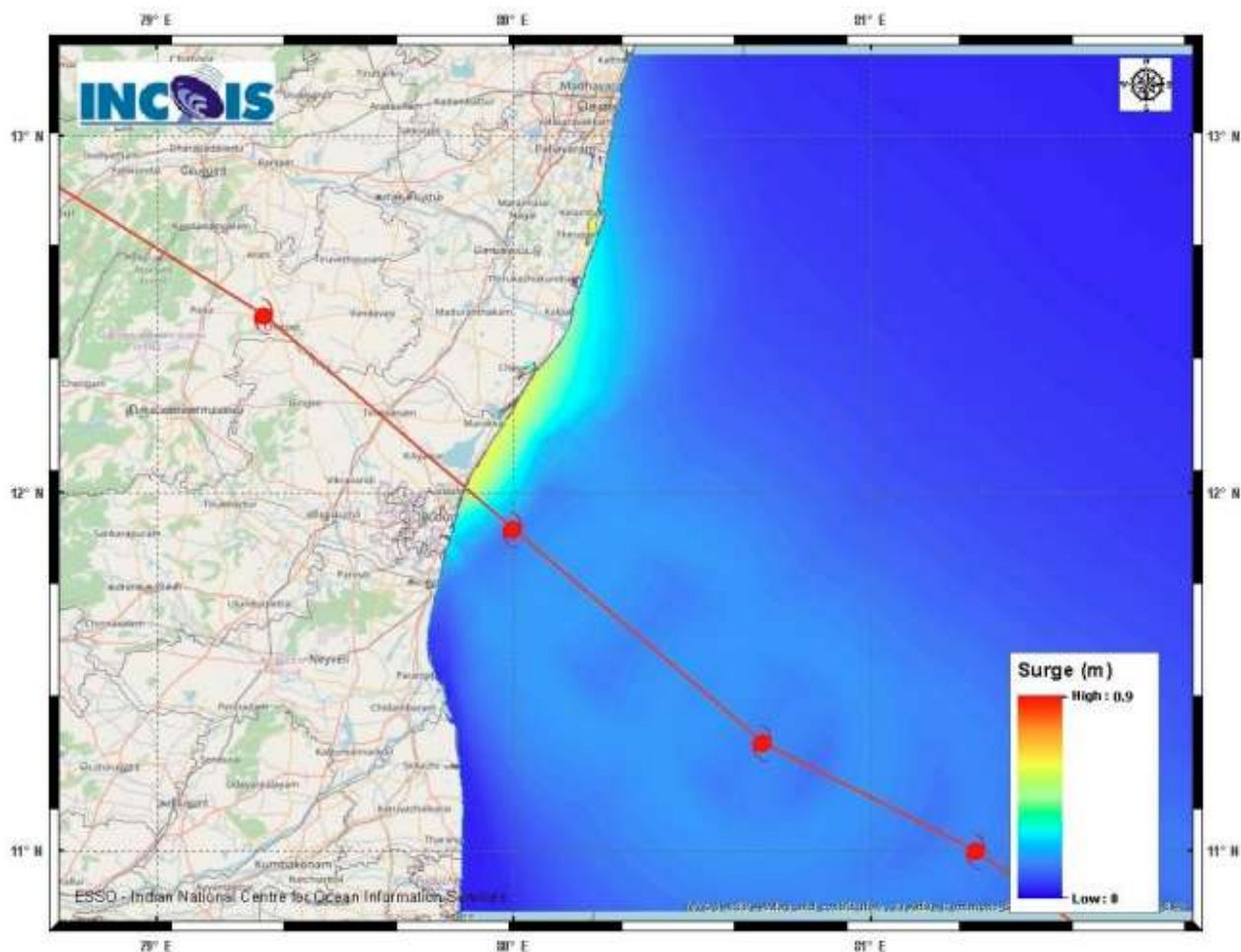
| MSW (knot/kmph) | Impact | Action |
|-----------------|------------------------|--|
| 28-33 (52-61) | Very rough seas | Total suspension of fishing operations |
| 34-49 (62-91) | High to very high seas | Total suspension of fishing operations |
| 50-63 (92-117) | Very high seas | Total suspension of fishing operations |
| ≥ 64 (≥118) | Phenomenal | Total suspension of fishing operations |

India Meteorological Department, Ministry of Earth Sciences.

Phone: (91) 11-24652484, FAX: (91) 11-24643128, 24623220, E-mail: cwdhq2008@gmail.com, Website: rsmcnwdelhi.imd.gov.in

Spatial rainfall distribution: Isolated: <25%, A few: 26-50%, Many: 51-75%, Most: 76-100%

Rainfall amount (mm): Heavy rain: 64.5 – 115.5, Very heavy rain: 115.6 – 204.4, Extremely heavy rain: 204.5 or more.



Expected Maximum Storm Surge * 0.9m Near Kancheepuram & Villupuram, Tamil Nadu
Expected Maximum Inundation Extent 0.3 Km near Nagapattinam.

STORM SURGE HEIGHT INFORMATION:

* The below listed surge heights are over and above astronomical tide.

| MANDAL/TALUK | DISTRICT | STATE / UNION TERRITORY | NEAREST PLACE OF HABITATION | STORM SURGE (m) * | EXPECTED INUNDATION EXTENT (km) |
|------------------|--------------|-------------------------|-----------------------------|-------------------|---------------------------------|
| Chengalpattu | Kancheepuram | Tamil Nadu | Thiruporur | 0.4-0.9 | Upto 0.2 |
| Cheyyur | Kancheepuram | Tamil Nadu | Kadalur | 0.4-0.6 | Nil |
| Cuddalore | Cuddalore | Tamil Nadu | Cuddalore | 0.3-0.5 | Nil |
| Mannargudi | Thiruvarur | Tamil Nadu | Thiruvarur | 0.2-0.5 | Upto 0.14 |
| Puducherry | Puducherry | Puducherry | Bahour Commune Panchayat | 0.4-0.5 | Nil |
| Tindivanam | Viluppuram | Tamil Nadu | Ozhukarai Municipality | 0.5-0.7 | Upto 0.2 |
| Tirutturaippundi | Nagapattinam | Tamil Nadu | Vaimedu west | 0.2-0.7 | Upto 0.3 |

Contact: Cyclone Warning Division, Office of the Director General of Meteorology,
India Meteorological Department, Ministry of Earth Sciences.

Phone: (91) 11-24652484, FAX: (91) 11-24643128, 24623220, E-mail: cwdhq2008@gmail.com, Website: rsmcnwdelhi.imd.gov.in

Spatial rainfall distribution: Isolated: <25%, A few: 26-50%, Many: 51-75%, Most: 76-100%

Rainfall amount (mm): Heavy rain: 64.5 – 115.5, Very heavy rain: 115.6 – 204.4, Extremely heavy rain: 204.5 or more.