



Government of India  
Ministry of Earth Sciences



India Meteorological Department

## PRESS RELEASE - 5

Time of issue: 1400 hours IST

Dated: 26-11-2020

### Sub: Cyclonic Storm “NIVAR” over southwest Bay of Bengal

Yesterday’s very severe cyclonic storm over southwest Bay of Bengal (BoB) moved northwestwards and crossed Tamilnadu and Puducherry coasts near Puducherry (near latitude 12.1°N and longitude 79.9°E) during 2330 IST of 25<sup>th</sup> to 0230 IST of 26<sup>th</sup> November as a very severe cyclonic storm with an estimated wind speed of 120-130 kmph gusting to 145 kmph. Continuing to move northwestwards, it weakened into a Severe Cyclonic Storm over north coastal Tamilnadu in the early morning hours (0230 hrs IST) and further into a cyclonic storm in the morning (0830 hrs IST) of today, the 26<sup>th</sup> November, 2020. It lay centred at 0830 hrs IST of today, the 26<sup>th</sup> November, 2020 over the same region near Lat. 12.6°N and Long 79.4°E, about 85 km north-northwest of Puducherry and about 95 km west-southwest of Chennai.

The Cyclonic Storm ‘NIVAR’ would continue to move northwestwards and weaken further into a Deep Depression during next 06 hours and into a depression by subsequent 06 hours.

Forecast track and intensity are given below:

Date/Time(IST)	Position (Lat. °N/ long. °E)	Maximum sustained surface wind speed (Kmph)	Category of cyclonic disturbance
26.11.20/0830	12.6/79.4	70-80 gusting to 90	Cyclonic Storm
26.11.20/1130	12.8/79.2	60-70 gusting to 80	Cyclonic Storm
26.11.20/1730	13.2/78.8	50-60 gusting to 70	Deep Depression
26.11.20/2330	13.6/78.4	35-45 gusting to 55	Depression
27.11.20/0530	14.0/78.0	20-30 gusting to 40	Low Pressure Area

### Warnings:

#### (i) Rainfall

Under its influence, rainfall at most/many places with heavy to very heavy falls at a few places and isolated extremely heavy falls likely to occur over Chittoor, Kurnool, Prakasam; Cuddappa districts of Andhra Pradesh and adjoining southeast Telangana on 26<sup>th</sup> Nov. Heavy to very heavy

Contact: Cyclone Warning Division, Office of the Director General of Meteorology,  
India Meteorological Department, Ministry of Earth Sciences.

Phone: (91) 11-24652484, FAX: (91) 11-24643128, 24623220, E-mail: [cwdhq2008@gmail.com](mailto:cwdhq2008@gmail.com), Website: [rsmcnnewdelhi.imd.gov.in](http://rsmcnnewdelhi.imd.gov.in)

Spatial rainfall distribution: Isolated: <25%, A few: 26-50%, Many: 51-75%, Most: 76-100%

Rainfall amount (mm): Heavy rain: 64.5 – 115.5, Very heavy rain: 115.6 – 204.4, Extremely heavy rain: 204.5 or more.

rainfall at isolated places are very likely over north Tamilnadu, remaining districts of Andhra Pradesh and southeast Telangana.

Sub-Divisions	26 Nov 2020*	27 Nov 2020*
<b>Coastal Andhra Pradesh</b>	Rainfall at most places with isolated heavy to very heavy falls over coastal Andhra Pradesh and isolated extremely heavy falls over south coastal Andhra Pradesh	Rainfall at many places with heavy rainfall at isolated places
<b>Coastal &amp; North Interior Tamilnadu, Puducherry &amp; Karaikal</b>	Rainfall at many places with heavy rainfall at isolated places	Rainfall at many places
<b>South Interior Karnataka</b>	Rainfall at many places with heavy rainfall at isolated places	Rainfall at many places
<b>Rayalaseema</b>	Rainfall at most places with heavy to very heavy rainfall at a few places and extremely heavy falls at isolated places	Rainfall at many places
<b>Telangana</b>	Rainfall at most places with heavy to very heavy rainfall and extremely heavy falls at isolated places over southeast Telangana	Rainfall at many places

#### (ii) Wind warning

- Gale wind speed reaching 70-80 kmph gusting to 90 kmph is prevailing over Southwest Bay of Bengal. It will gradually decrease becoming 50-60 kmph gusting to 70 kmph by evening of today, the 26<sup>th</sup> November, 2020.
- Gale wind speed reaching 70-80 kmph gusting to 90 kmph is prevailing along & off **Puducherry, Villupuram, Chengalpattu, Kanchipuram, Chennai & Tiruvallu** districts of north Tamil Nadu. It will gradually decrease becoming 50-60 kmph gusting to 70 kmph by evening and squally wind speed reaching 35-45 kmph gusting to 55 kmph by night of today, the 26<sup>th</sup> November, 2020.
- Squally wind speed reaching 45-55 gusting to 65 kmph very likely to prevail over interior districts (Ranipet, Tiruvannamalai, Tirupattur, Vellore) of Tamilnadu and Chittoor district of Andhra Pradesh till noon of today, 26<sup>th</sup> November, 2020 and gradual decrease thereafter.
- Squally wind speed reaching 35-45 gusting to 55 kmph very likely over **Nagapattinam, Karaikal, Myladuthurai, Cuddalore & Tiruvarur** districts of Tamilnadu during next 06 hours and gradual decrease thereafter.

Contact: Cyclone Warning Division, Office of the Director General of Meteorology, India Meteorological Department, Ministry of Earth Sciences.

Phone: (91) 11-24652484, FAX: (91) 11-24643128, 24623220, E-mail: [cwdhq2008@gmail.com](mailto:cwdhq2008@gmail.com), Website: [rsmcnwdelhi.imd.gov.in](http://rsmcnwdelhi.imd.gov.in)

Spatial rainfall distribution: Isolated: <25%, A few: 26-50%, Many: 51-75%, Most: 76-100%

Rainfall amount (mm): Heavy rain: 64.5 – 115.5, Very heavy rain: 115.6 – 204.4, Extremely heavy rain: 204.5 or more.

**(iii) Sea condition**

- Sea condition is very rough to high over Southwest Bay of Bengal, along & off north Tamil Nadu, Puducherry coast. It will gradually become very rough to rough by afternoon of 26<sup>th</sup> Nov and improve further by night of 26<sup>th</sup> Nov.
- Sea condition is rough to very rough over westcentral Bay of Bengal and along & off south Andhra Pradesh coast. It will improve after 06 hours.

**(iv) Damage expected over Villupuram, Chengalpattu, Tiruvarur, Kanchipuram, Chennai, Tiruvallaur, Ranipet, Tiruvannamalai, Tirupattur, Vellore districts of Tamilnadu, Puducherry and Nellore & Chittoor districts of Andhra Pradesh during next 03 hours:**

- Partial damage to thatched houses/ huts with possibility of roof tops being blown off and unattached metal sheets may fly.
- Partial damage to power and communication lines.
- Damage to Kutcha and some damage to Pucca roads. Flooding of escape routes.
- Breaking of tree branches, uprooting of small trees. Damage to banana and papaya trees, horticulture and crops & orchards.

**viii) Fisherman Warning till evening of today, 26<sup>th</sup> November, 2020:**

- Total suspension of fishing operations
- Movement in motor boats and small ships unsafe.
- Fishermen are advised not to venture into southwest & adjoining westcentral Bay of Bengal during next 12 hours.

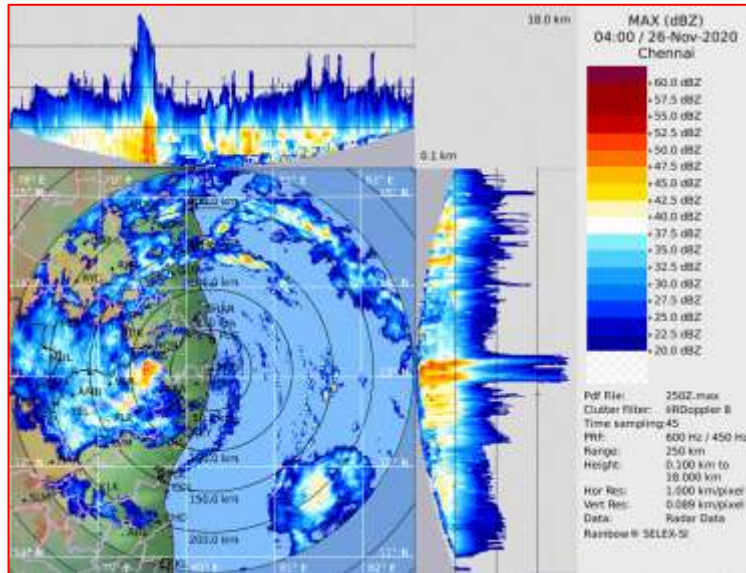
**(ix) Action Suggested during next 03 hours:**

- People in affected areas to remain in safe places and indoors.
- Judicious regulation of rail, road and air traffic.
- People are advised to remain indoors/in safe places and cooperate with state government officials and disaster management agencies.

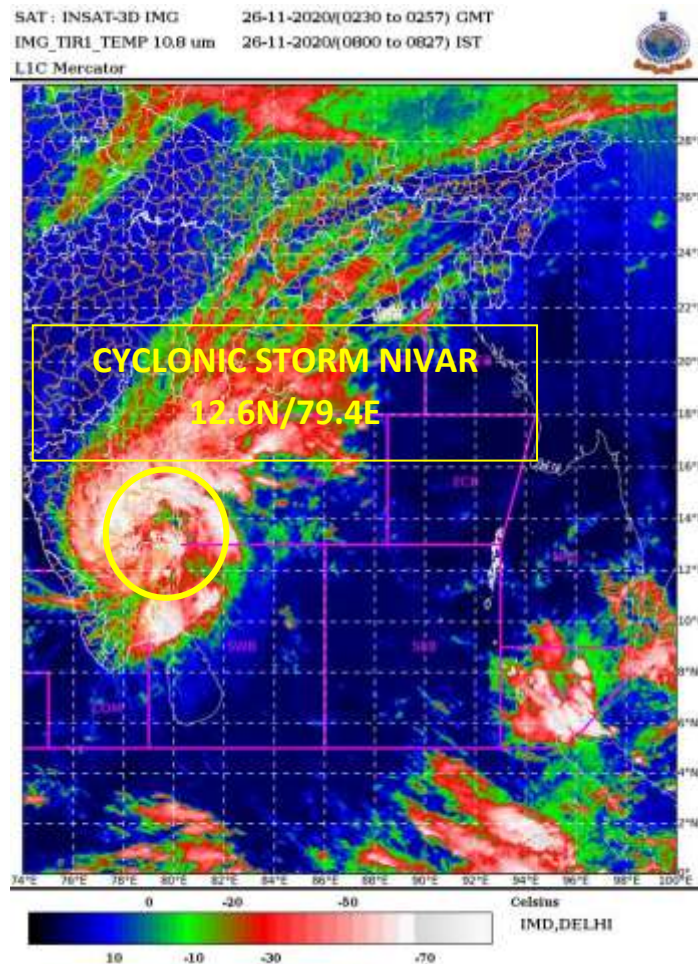
Chief amounts of 24 hours past rainfall (cm) ending at 0830 hours IST of today, the 26th November, 2020 recorded over Tamilnadu & Puducherry are given in **Annexure 1**:

**The system is under continuous surveillance and the concerned state governments are being informed regularly.**

For details kindly visit [www.rsmcnewdelhi.imd.gov.in](http://www.rsmcnewdelhi.imd.gov.in), [www.mausam.imd.gov.in](http://www.mausam.imd.gov.in)



DWR Chennai Imagery based on 0930 IST of 26<sup>th</sup> November, 2020



INSAT-3D Imagery based on 0800 IST of 26<sup>th</sup> November, 2020

Contact: Cyclone Warning Division, Office of the Director General of Meteorology,  
India Meteorological Department, Ministry of Earth Sciences.

Phone: (91) 11-24652484, FAX: (91) 11-24643128, 24623220, E-mail: [cwdhq2008@gmail.com](mailto:cwdhq2008@gmail.com), Website: [rsmcnwdelhi.imd.gov.in](http://rsmcnwdelhi.imd.gov.in)

Spatial rainfall distribution: Isolated: <25%, A few: 26-50%, Many: 51-75%, Most: 76-100%

Rainfall amount (mm): Heavy rain: 64.5 – 115.5, Very heavy rain: 115.6 – 204.4, Extremely heavy rain: 204.5 or more.



**OBSERVED AND FORECAST TRACK ALONGWITH CONE OF UNCERTAINTY OF CYCLONIC STORM NIVAR OVER NORTH COASTAL TAMILNADU BASED ON 0300UTC OF 26<sup>TH</sup> NOVEMBER, 2020.**



DATE/TIME IN UTC

IST=UTC + 0530

L: LOW PRESSURE AREA

WML: WELL MARKED LOW PRESSURE AREA

D: DEPRESSION (17-27 KT)

DD: DEEP DEPRESSION (28-33 KT)

CS: CYCLONIC STORM (34-47 KT)

SCS: SEVERE CYCLONIC STORM (48-63KT)

VSCS: VERY SEVERE CYCLONIC STORM (64-89 KT)

ESCS: EXTREMELY SEVERE CYCLONIC STORM (90-119 KT)

SuCS: SUPER CYCLONIC STORM ( $\geq$  120 KT)

● LESS THAN 34 KT

☪ 34-47 KT

☪  $\geq$  48 KT

— OBSERVED TRACK

— FORECAST TRACK

▲ CONE OF UNCERTAINTY

Contact: Cyclone Warning Division, Office of the Director General of Meteorology,

India Meteorological Department, Ministry of Earth Sciences.

Phone: (91) 11-24652484, FAX: (91) 11-24643128, 24623220, E-mail: [cwdhq2008@gmail.com](mailto:cwdhq2008@gmail.com), Website: [smcnewdelhi.ind.gov.in](http://smcnewdelhi.ind.gov.in)

Spatial rainfall distribution: Isolated: <25%, A few: 26-50%, Many: 51-75%, Most: 76-100%

Rainfall amount (mm): Heavy rain: 64.5 – 115.5, Very heavy rain: 115.6 – 204.4, Extremely heavy rain: 204.5 or more.



# OBSERVED AND FORECAST TRACK ALONGWITH QUADRANT WIND DISTRIBUTION OF CYCLONIC STORM NIVAR OVER NORTH COASTAL TAMILNADU BASED ON 0300UTC OF 26<sup>TH</sup> NOVEMBER, 2020



### DATE/TIME IN UTC

IST=UTC + 0530

L: LOW PRESSURE AREA

WML: WELL MARKED LOW PRESSURE AREA

D: DEPRESSION (17-27 KT)

DD: DEEP DEPRESSION (28-33 KT)

CS: CYCLONIC STORM (34-47 KT)

SCS: SEVERE CYCLONIC STORM (48-63KT)

VSCS: VERY SEVERE CYCLONIC STORM (64-89 KT)

ESCS: EXTREMELY SEVERE CYCLONIC STORM (90-119 KT)

SuCS: SUPER CYCLONIC STORM (≥ 120 KT)

● LESS THAN 34 KT

○ 34-47 KT

● ≥ 48 KT

— OBSERVED TRACK

— FORECAST TRACK

▲ CONE OF UNCERTAINTY

AREA OF MAXIMUM SUSTAINED WIND SPEED:

■ 28-33 KT (52-61 KMPH)

■ 34-49 KT (62-91 KMPH)

■ 50-63 KT (92-117 KMPH)

■ ≥ 64 KT (≥118 KMPH)

### IMPACT OVER THE SEA

MSW (knot/kmph)	Impact	Action
28-33 (52-61)	Very rough seas	Total suspension of fishing operations
34-49 (62-91)	High to very high seas	Total suspension of fishing operations
50-63 (92-117)	Very high seas	Total suspension of fishing operations
≥ 64 (≥118)	Phenomenal	Total suspension of fishing operations

India Meteorological Department, Ministry of Earth Sciences.

Phone: (91) 11-24652484, FAX: (91) 11-24643128, 24623220, E-mail: [cwdhq2008@gmail.com](mailto:cwdhq2008@gmail.com), Website: [rsmcnwcdelhi.imd.gov.in](http://rsmcnwcdelhi.imd.gov.in)

Spatial rainfall distribution: Isolated: <25%, A few: 26-50%, Many: 51-75%, Most: 76-100%

Rainfall amount (mm): Heavy rain: 64.5 – 115.5, Very heavy rain: 115.6 – 204.4, Extremely heavy rain: 204.5 or more.

**Chief amounts of 24 hours past rainfall (cm) ending at 0830 hours IST of today, the 26th November, 2020 over Tamilnadu, Puducherry & Karaikal:**

Tambaram (dist Chengalpattu) 31, Pondicherry (dist Puducherry) 30, Vilupuram (dist Villupuram) 28, Cuddalore (dist Cuddalore) 27, DGP Office (dist Chennai) 26, Sholinganallur (dist Chennai) 22, Thamarapakkam (dist Tiruvallur) 19, Parangipettai (dist Cuddalore) 18, Pallipattu (dist Tiruvallur) 17, Cholavaram (dist Tiruvallur) 16, Gingee (dist Villupuram), Poonamallee (dist Tiruvallur), Ambathur (dist Tiruvallur), Mahabalipuram (dist Chengalpattu), Tiruvallur (dist Tiruvallur), Gummidipoondi (dist Tiruvallur) 15 each,

Tindivanam (dist Villupuram), Maduranthagam (dist Chengalpattu), Chembarabakkam (dist Tiruvallur), Anna University (dist Chennai), Vanur (dist Villupuram), Kollidam (dist Nagapattinam), Bhuvanagiri (dist Cuddalore) 14 each,

Mgr Nagar (dist Chennai), Kancheepuram (dist Kancheepuram), Kurinjipadi (dist Cuddalore), Alandur (dist Chennai), Chidambaram Aws (dist Cuddalore), Red Hills (dist Tiruvallur), Marakkanam (dist Villupuram), Chengalpattu (dist Chengalpattu), Tiruttani (dist Tiruvallur), Chidambaram (dist Cuddalore) 13 each,

Ulundurpet (dist Kallakurichi), Poondi (dist Tiruvallur), Vadapudupattu (dist Tirupathur), Keelpennathur (dist Tiruvannamalai), Koratur (dist Tiruvallur), Sirkali (dist Nagapattinam) 12 each,

Chennai Ap (dist Chennai), Vandavasi (dist Tiruvannamalai), Sethiyathope (dist Cuddalore), Vembakkam (dist Tiruvannamalai), Poonamalle Arg (dist Tiruvallur), Arakonam (dist Ranipet), Thirukalukundram (dist Chengalpattu), Sriperumbudur (dist Kancheepuram), Panruti (dist Cuddalore) 11 each,

Ponneri (dist Tiruvallur), Arcot (dist Ranipet), Taramani Arg (dist Chennai), Perambur (dist Chennai), Uthiramerur (dist Kancheepuram), Sholingur (dist Ranipet), Cheyyur (dist Chengalpattu) 10 each,

Anna Uty Arg (dist Chennai), Chembarabakkam Arg (dist Tiruvallur), Thiruvalangadu (dist Tiruvallur), Tirukoilur (dist Kallakurichi), Polur (dist Tiruvannamalai), Mayiladuthurai (dist Nagapattinam), Thirupporur (dist Chengalpattu), Kelambakkam (dist Chengalpattu), Karaikal (dist Karaikal), Manalmedu (dist Nagapattinam), Puzhal Arg (dist Tiruvallur) 9 each,

Arani (dist Tiruvannamalai), Chennai(n) (dist Chennai), Hindusthan University (dist Chengalpattu), Vepur (dist Cuddalore), Vridhachalam (dist Cuddalore), Ammundi (dist Vellore), Vellore (dist Vellore), R.k.pet (dist Tiruvallur), Kodavasal (dist Tiruvarur), Manjalaru (dist Thanjavur) 8 each,

Uthukottai (dist Tiruvallur), Agaram Seegoor (dist Perambalur), Kaveripakkam (dist Ranipet), Ambur (dist Tirupathur), Tiruttani Pto (dist Tiruvallur), Tozhudur (dist Cuddalore), Tarangambadi (dist Nagapattinam), Pelandurai (dist Cuddalore), Tiruvannamalai (dist Tiruvannamalai), Srimushnam (dist Cuddalore), Ennore Aws (dist Tiruvallur), Needamangalam (dist Tiruvarur), Sendurai (dist Ariyalur), Cheyyar (dist Tiruvannamalai), Katpadi (dist Vellore), Aduthurai Aws (dist Thanjavur) 7 each.

Contact: Cyclone Warning Division, Office of the Director General of Meteorology,

India Meteorological Department, Ministry of Earth Sciences.

Phone: (91) 11-24652484, FAX: (91) 11-24643128, 24623220, E-mail: [cwdhq2008@gmail.com](mailto:cwdhq2008@gmail.com), Website: [rsmcnnewdelhi.imd.gov.in](http://rsmcnnewdelhi.imd.gov.in)

Spatial rainfall distribution: Isolated: <25%, A few: 26-50%, Many: 51-75%, Most: 76-100%

Rainfall amount (mm): Heavy rain: 64.5 – 115.5, Very heavy rain: 115.6 – 204.4, Extremely heavy rain: 204.5 or more.