



Government of India
Ministry of Earth Sciences



India Meteorological Department

PRESS RELEASE - 1

Time of issue: 1430 hours IST

Dated: 30-11-2020

Sub: Depression over southeast Bay of Bengal & neighbourhood (Pre-Cyclone Watch for South Tamilnadu and South Kerala coasts)

A depression formed over southeast Bay of Bengal in the early morning (0530 hrs IST) of today, the 30th November, 2020. It moved west-northwestwards and lay centered at 0830 hrs IST over the same region near Lat. 7.7° N and Long. 87.70°E, about 710 km east-southeast of Trincomalee (Sri Lanka) and 1120 km east-southeast of Kanniyakumari (India).

It is very likely to intensify further into a deep depression during next 12 hours and into a cyclonic storm during subsequent 24 hours. It is very likely to move west-northwestwards and cross Sri Lanka coast between latitude 7.5° N and 9.0° N during evening/night of 2nd December. It is very like to move nearly westwards thereafter and emerge into Comorin area on 3rd December morning.

Forecast track and intensity are given below:

Date/Time(IST)	Position (Lat. °N/ long. °E)	Maximum sustained surface wind speed (Kmph)	Category of cyclonic disturbance
30.11.20/0830	7.7/87.7	45-55 gusting to 65	Depression
30.11.20/1730	8.0/86.9	50-60 gusting to 70	Deep Depression
01.12.20/0530	8.2/86.0	60-70 gusting to 80	Cyclonic Storm
01.12.20/1730	8.4/84.7	65-75 gusting to 85	Cyclonic Storm
02.12.20/0530	8.5/83.0	70-80 gusting to 90	Cyclonic Storm
02.12.20/1730	8.6/81.4	70-80 gusting to 90	Cyclonic Storm
03.12.20/0530	8.5/79.5	60-70 gusting to 80	Cyclonic Storm

Warnings:

(i) Rainfall

- **Heavy to very heavy rainfall** at a few places with isolated **Extremely heavy falls** very likely over **south Tamilnadu (Kanniyakumari, Tirunelveli, Thoothukudi, Tenkasi, Ramanathapuram and Sivagangai)** on 2nd and 3rd December, 2020; **over south Kerala(Thiruvananthapuram, Kollam, Pathanamthitta and Alappuzah)** on 3rd December and isolated heavy to very heavy rainfall likely over south Tamilnadu on 1st and 4th December 2020 and south Kerala on 2nd and 4th December, 2020.
- Heavy to very heavy rainfall at Isolated places very likely over north Tamilnadu, Puducherry, Mahe & Kariakal and north Kerala during 2nd and 3rd December, 2020 and isolated heavy rainfall on 1st and 4th December.
- Heavy rainfall at isolated places very likely over south Coastal Andhra Pradesh during 2nd & 03rd December and over Lakshadweep during 03rd and 4th December, 2020.

Contact: Cyclone Warning Division, Office of the Director General of Meteorology,
India Meteorological Department, Ministry of Earth Sciences.

Phone: (91) 11-24652484, FAX: (91) 11-24643128, 24623220, E-mail: cwdhq2008@gmail.com, Website: rsmcnwcdelhi.imd.gov.in

Spatial rainfall distribution: Isolated: <25%, A few: 26-50%, Many: 51-75%, Most: 76-100%

Rainfall amount (mm): Heavy rain: 64.5 – 115.5, Very heavy rain: 115.6 – 204.4, Extremely heavy rain: 204.5 or more.

Sub-Divisions	30 Nov 2020*	01 Dec 2020*	02 Dec 2020*	03 Dec 2020*	04 Dec 2020*
South Tamilnadu	Rainfall at a few places	Rainfall at many places with heavy rainfall at isolated places	Rainfall at most places with heavy to very heavy rainfall at few places and extremely heavy fall at isolated places	Rainfall at most places with heavy to very heavy rainfall at few places and extremely heavy fall at isolated places	Rainfall at many places with heavy to very heavy rainfall at isolated places
North Tamilnadu, Puducherry & Karaikal	Rainfall at isolated places	Rainfall at a few places with heavy rainfall at isolated places	Rainfall at many places with heavy to very heavy rainfall at isolated places	Rainfall at many places with heavy to very heavy rainfall at isolated places	Rainfall at many places with heavy fall at isolated places
South Kerala	Rainfall at isolated places	Rainfall at many places with heavy rainfall at isolated places	Rainfall at most places with heavy to very heavy rainfall at isolated places	Rainfall at most places with heavy to very heavy rainfall at few places and extremely heavy fall at isolated places	Rainfall at many places with heavy to very heavy rainfall at isolated places
North Kerala & Mahe	Rainfall at isolated places	Rainfall at many places with heavy rainfall at isolated places	Rainfall at many places with heavy to very heavy rainfall at isolated places	Rainfall at most places with heavy to very heavy rainfall at isolated places	Rainfall at a few places with heavy fall at isolated places
South Coastal Andhra Pradesh	Rainfall at isolated places	Rainfall at isolated places	Rainfall at a few places with heavy rainfall at isolated places	Rainfall at a few places with heavy rainfall at isolated places	Rainfall at a few places
Lakshadweep	Rainfall at a few places	Rainfall at a few places	Rainfall at most places	Rainfall at most places with heavy to very falls at isolated places	Rainfall at most places with heavy to very falls at isolated places

(ii) Wind warning

- Squally wind speed reaching 45-55 kmph gusting to 65 kmph very likely over central parts of South Bay of Bengal on 30th November.
- It would gradually increase becoming 55-65 kmph gusting to 75 kmph over southeast and adjoining southwest Bay of Bengal from 30th November night. It would gradually increase becoming gale wind speed reaching 70-80 kmph gusting to 90 kmph over southwest Bay of Bengal, along & off Sri Lanka coast from 2nd December morning for subsequent 24 hours.
- Squally wind speed reaching 45-55 kmph gusting to 65 kmph very likely over Comorin Area, Gulf of Mannar and south Tamilnadu-Kerala coasts from 2nd December forenoon. It will gradually increase becoming 55-65 kmph gusting to 75

Contact: Cyclone Warning Division, Office of the Director General of Meteorology, India Meteorological Department, Ministry of Earth Sciences.

Phone: (91) 11-24652484, FAX: (91) 11-24643128, 24623220, E-mail: cwdhq2008@gmail.com, Website: rsmcnwcdelhi.imd.gov.in

Spatial rainfall distribution: Isolated: <25%, A few: 26-50%, Many: 51-75%, Most: 76-100%

Rainfall amount (mm): Heavy rain: 64.5 – 115.5, Very heavy rain: 115.6 – 204.4, Extremely heavy rain: 204.5 or more.

kmph over Gulf of Mannar, along & off south Tamilnadu & Kerala coasts, over Comorin Area, Lakshadweep-Maldives area and adjoining southeast Arabian Sea from 3rd December morning for subsequent 48 hours.

(iii) Sea condition

- Sea condition will be rough to very rough over southeast Bay of Bengal from 30th November to 1st December and very rough to high over southwest & adjoining southeast Bay of Bengal and along & off east Sri Lanka coast during 1st & 2nd December, and rough to very rough over Comorin Area, Gulf of Mannar & along & off south Tamilnadu-Kerala coasts from 2nd to 4th December.
- Sea condition will be rough to very rough over Lakshadweep-Maldives area and adjoining southeast Arabian Sea during 3rd – 4th December.

(iv) Fishermen Warning

- **Total suspension** of fishing operation **during 30th November to 4th December** over the areas as mentioned below.
- Fishermen are advised not to venture into southeast Bay of Bengal from 30th Nov to 1st Dec, southwest Bay of Bengal and along & off east Sri Lanka coast **from 1st to 3rd December**; Comorin Area, Gulf of Mannar and south Tamilnadu-Kerala coasts **from 2nd to 4th December**, over Lakshadweep-Maldives area & adjoining southeast Arabian Sea **from 3rd to 4th December**.
- Fishermen out at Sea are advised to return to the coast by today.

The system is under continuous surveillance and the concerned state governments are being informed regularly.

For details kindly visit www.rsmcnewdelhi.imd.gov.in, www.mausam.imd.gov.in

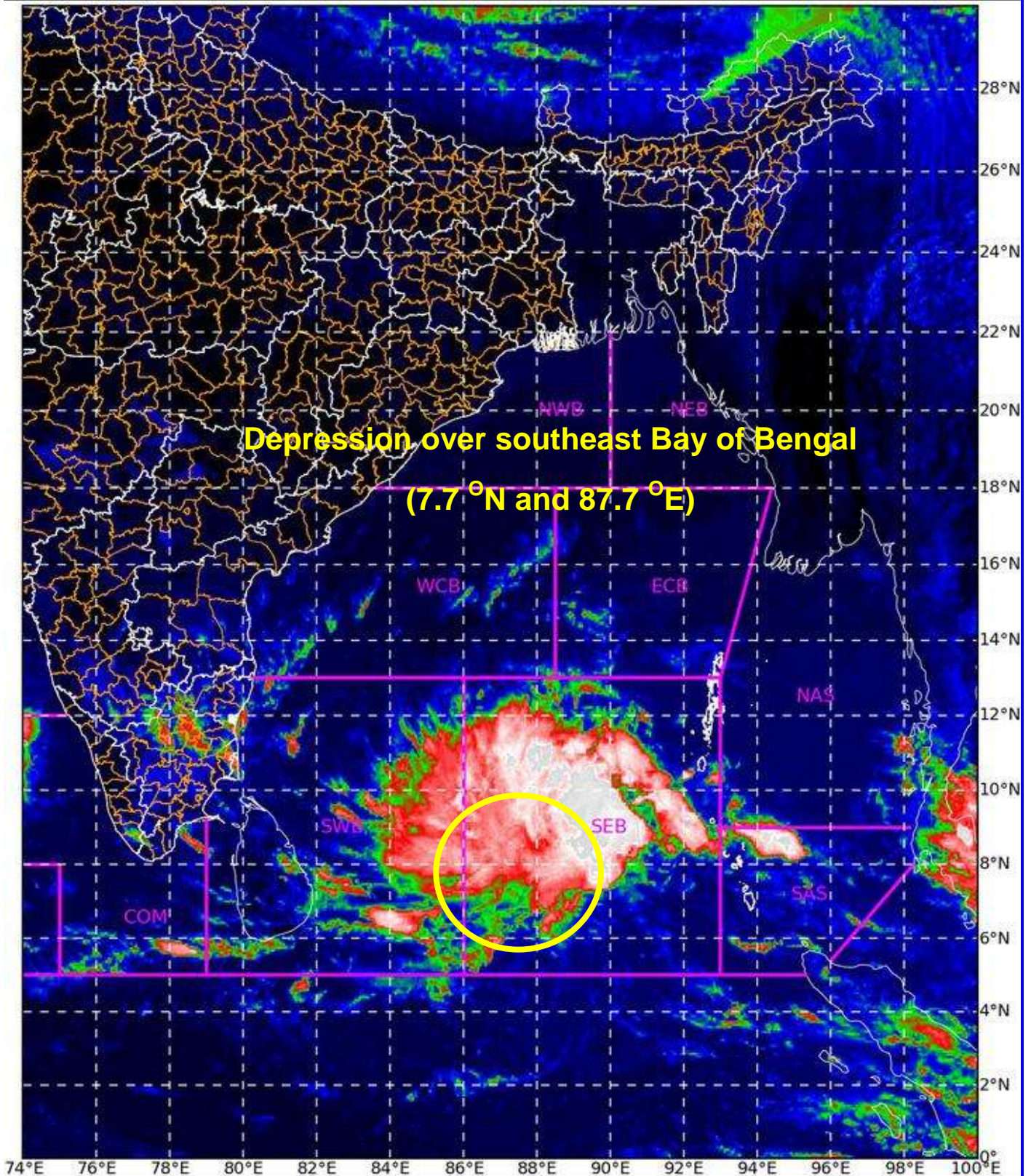
SAT : INSAT-3D IMG

30-11-2020/(0530 to 0557) GMT

IMG_TIR1_TEMP 10.8 um

30-11-2020/(1100 to 1127) IST

L1C Mercator



**Depression over southeast Bay of Bengal
(7.7 °N and 87.7 °E)**

Celsius
IMD, DELHI

Con:
Indi:

10 -10 -30 -70

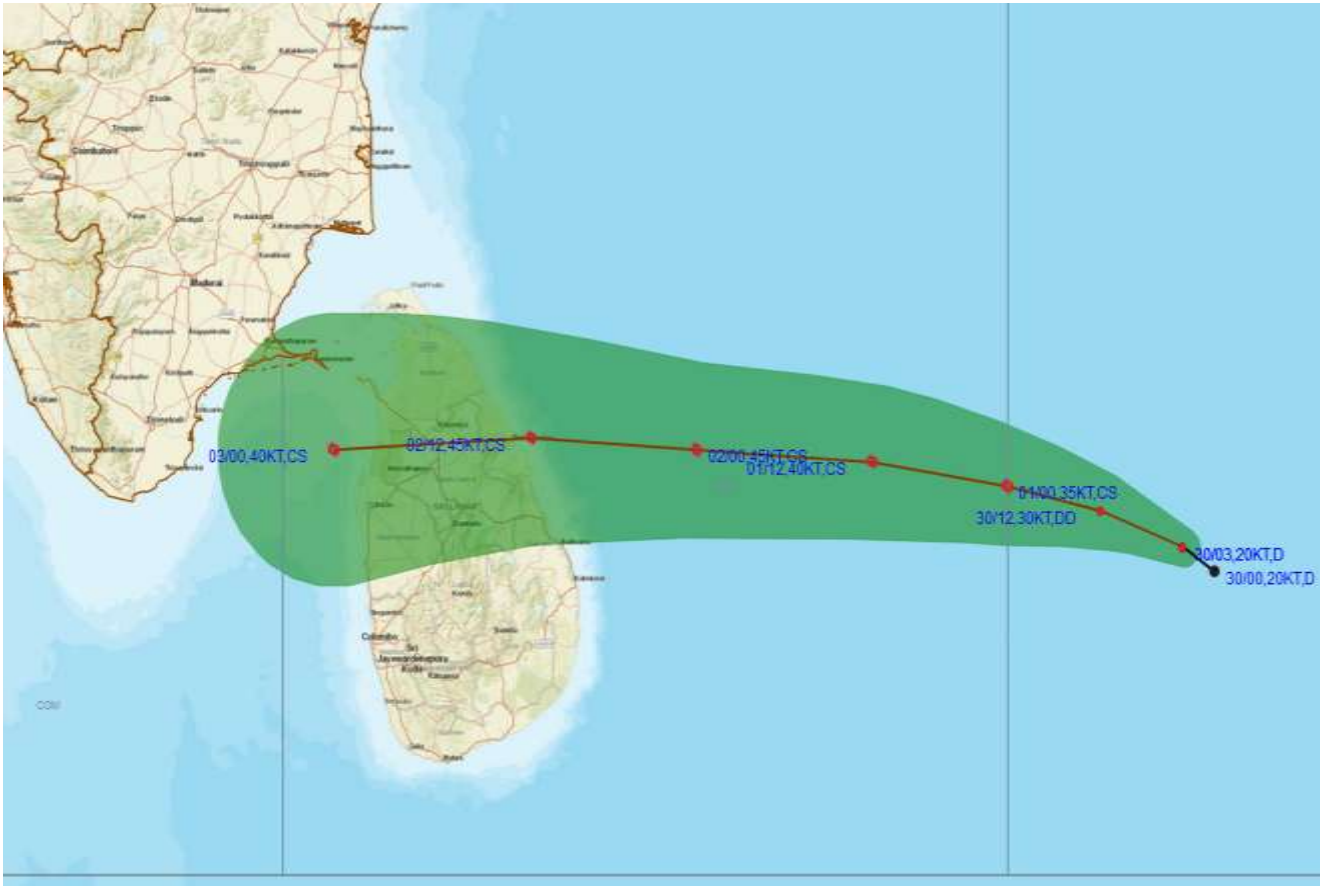
Phone: (91) 11-24652484, FAX: (91) 11-24643128, 24623220, E-mail: cwdhq2008@gmail.com, Website: rsmcnwdelhi.imd.gov.in

Spatial rainfall distribution: Isolated: <25%, A few: 26-50%, Many: 51-75%, Most: 76-100%

Rainfall amount (mm): Heavy rain: 64.5 – 115.5, Very heavy rain: 115.6 – 204.4, Extremely heavy rain: 204.5 or more.



OBSERVED AND FORECAST TRACK ALONGWITH CONE OF UNCERTAINTY OF DEPRESSION OVER SOUTHEAST BAY OF BENGAL BASED ON 0300UTC OF 30TH NOVEMBER, 2020.

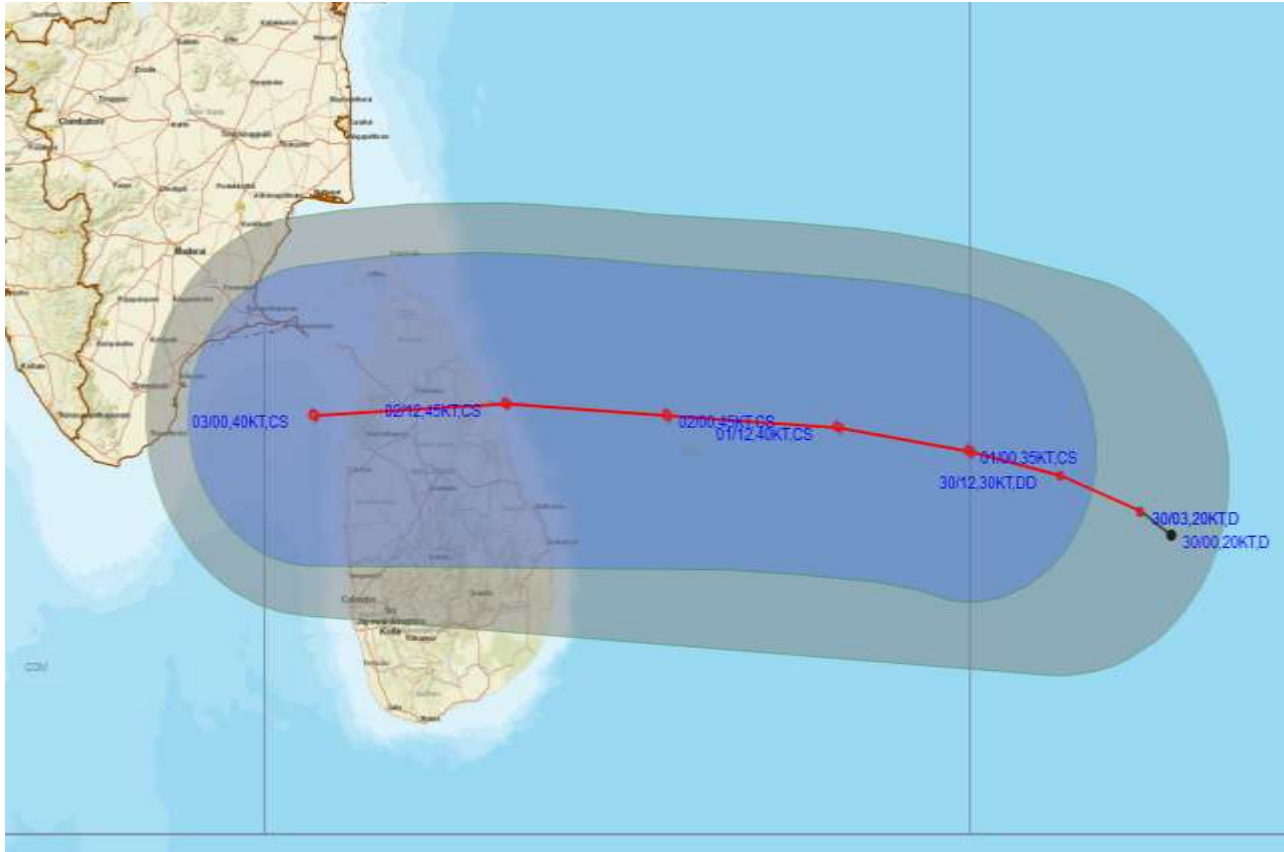


DATE/TIME IN UTC
 IST=UTC + 0530
 L: LOW PRESSURE AREA
 WML: WELL MARKED LOW PRESSURE AREA
 D: DEPRESSION (17-27 KT)
 DD: DEEP DEPRESSION (28-33 KT)
 CS: CYCLONIC STORM (34-47 KT)
 SCS: SEVERE CYCLONIC STORM (48-63KT)
 VSCS: VERY SEVERE CYCLONIC STORM (64-89 KT)
 ESCS: EXTREMELY SEVERE CYCLONIC STORM (90-119 KT)
 SuCS: SUPER CYCLONIC STORM (\geq 120 KT)

- LESS THAN 34 KT
- 34-47 KT
- \geq 48 KT
- OBSERVED TRACK
- FORECAST TRACK
- CONE OF UNCERTAINTY



OBSERVED AND FORECAST TRACK ALONGWITH QUADRANT WIND DISTRIBUTION OF DEPRESSION OVER SOUTHEAST BAY OF BENGAL BASED ON 0300UTC OF 30TH NOVEMBER, 2020.



DATE/TIME IN UTC

IST=UTC + 0530

L: LOW PRESSURE AREA

WML: WELL MARKED LOW PRESSURE AREA

D: DEPRESSION (17-27 KT)

DD: DEEP DEPRESSION (28-33 KT)

CS: CYCLONIC STORM (34-47 KT)

SCS: SEVERE CYCLONIC STORM (48-63KT)

VSCS: VERY SEVERE CYCLONIC STORM (64-89 KT)

ESCS: EXTREMELY SEVERE CYCLONIC STORM (90-119 KT)

SuCS: SUPER CYCLONIC STORM (≥ 120 KT)

● LESS THAN 34 KT

○ 34-47 KT

⦿ ≥ 48 KT

— OBSERVED TRACK

— FORECAST TRACK

▲ CONE OF UNCERTAINTY

AREA OF MAXIMUM SUSTAINED WIND SPEED:

■ 28-33 KT (52-61 KMPH)

■ 34-49 KT (62-91 KMPH)

■ 50-63 KT (92-117 KMPH)

■ ≥ 64 KT (≥ 118 KMPH)

IMPACT OVER THE SEA

MSW (knot/kmph)	Impact	Action
28-33 (52-61)	Very rough seas	Total suspension of fishing operations
34-49 (62-91)	High to very high seas	Total suspension of fishing operations
50-63 (92-117)	Very high seas	Total suspension of fishing operations
≥ 64 (≥ 118)	Phenomenal	Total suspension of fishing operations

Contact: Cyclone Warning Division, Office of the Director General of Meteorology,

India Meteorological Department, Ministry of Earth Sciences.

Phone: (91) 11-24652484, FAX: (91) 11-24643128, 24623220, E-mail: cwdhq2008@gmail.com, Website: rsmcnwdelhi.imd.gov.in

Spatial rainfall distribution: Isolated: <25%, A few: 26-50%, Many: 51-75%, Most: 76-100%

Rainfall amount (mm): Heavy rain: 64.5 – 115.5, Very heavy rain: 115.6 – 204.4, Extremely heavy rain: 204.5 or more.