



सत्यमेव जयते
Government of India
Ministry of Earth Sciences



India Meteorological Department

PRESS RELEASE - 5

Time of issue: 1300 hours IST

Dated: 04-12-2020

Sub: Cyclonic Storm "BUREVI" weakened into a deep depression

Yesterday's cyclonic storm "Burevi" over north Sri Lanka and adjoining Gulf of Mannar moved west-northwestwards and emerged into Gulf of Mannar in the noon (1130 hrs IST) of yesterday. Continuing to move further west-northwestwards, it weakened into a deep depression in the same evening (1730 hrs IST of 3rd December). Thereafter, it moved very slowly, remained practically stationary over Gulf of Mannar, close to Ramanathapuram district coast.

At 0830 hrs IST of today, the 04th December, it lay centered over Gulf of Mannar close to Ramanathapuram district coast of Tamilnadu near Lat. 9.1°N and Long. 78.6°E about 40 km southwest of Ramanathapuram, 70 km west-southwest of Pamban and 160 km northeast of Kanniyakumari. The associated wind speed is about 50-60 gusting to 70 kmph.

The Deep Depression is likely to remain practically stationary over the same region and weaken into a Depression during next 12 hours. Thereafter, it will move slowly west-southwestwards across Ramanathapuram district towards south Kerala and weaken into a Well marked Low Pressure Area during subsequent 24 hours.

Warnings:

(i) Rainfall

- Heavy to very heavy rainfall at isolated places with extremely heavy falls at isolated places very likely today, the 4th December and heavy to very heavy rainfall at isolated places on 05th December over Tamilnadu and Puducherry.
- Heavy to very heavy rainfall at isolated places very likely over Kerala & Mahe on 04th & 05th December.
- Heavy rainfall at isolated places very likely over south coastal Andhra Pradesh on 04th & 05th December and over Lakshadweep on 05th December.

Sub-Divisions	04 Dec 2020*	05 Dec 2020*
Tamilnadu, Puducherry & Karaikal	Rainfall at most places with Heavy to very heavy rainfall with extremely heavy falls at isolated places	Rainfall at most places with heavy to very heavy falls at isolated places
Kerala & Mahe	Rainfall at most places with heavy to very heavy falls at isolated places	Rainfall at most places with heavy to very heavy falls at isolated places
South Coastal Andhra Pradesh	Rainfall at a few places with heavy rainfall at isolated places	Rainfall at a few places with heavy rainfall at isolated places
Lakshadweep	Rainfall at a few places	Rainfall at most places with heavy falls at isolated places

(ii) Wind warning

- Squally wind speed reaching 50-60 kmph gusting to 70 kmph is very likely during next 12 hours along and off south Tamilnadu coast (Ramanathapuram, Thoothukudi, Tirunelveli)

Contact: Cyclone Warning Division, Office of the Director General of Meteorology, India Meteorological Department, Ministry of Earth Sciences.

Phone: (91) 11-24652484, FAX: (91) 11-24643128, 24623220, E-mail: cwdhq2008@gmail.com, Website: rsmcnwdelhi.imd.gov.in

Spatial rainfall distribution: Isolated: <25%, A few: 26-50%, Many: 51-75%, Most: 76-100%

Rainfall amount (mm): Heavy rain: 64.5 – 115.5, Very heavy rain: 115.6 – 204.4, Extremely heavy rain: 204.5 or more.

and Kanniyakumari districts) and it will gradually decrease to 40-50 kmph gusting to 60 kmph by night of 4th December.

- Squally wind speed reaching 35-45 kmph gusting to 55 kmph very likely to prevail along & off south Kerala coast from tonight for subsequent 12 hours.
- Squally wind speed reaching 35-45 kmph gusting to 55 kmph very likely over Lakshadweep-Maldives area and adjoining southeast Arabian Sea from early morning of 05th December.

(iii) Sea condition

- Sea condition is rough to very rough over Gulf of Mannar and adjoining southwest Bay of Bengal, along & off south Tamilnadu, west Sri Lanka coasts during next 24 hours and rough to very rough over Comorin Area, adjoining southeast Arabian Sea, Lakshadweep-Maldives areas and along & off Kerala coast by night of 4th December for subsequent 48 hours.

(iv) Fishermen warning and Action suggested

- Fishermen are advised not to venture into Gulf of Mannar & adjoining southwest Bay of Bengal and along & off south Tamilnadu, north Sri Lanka & south Kerala coasts and Lakshadweep-Maldives area & adjoining southeast Arabian Sea during next 24 hours.

Chief amounts of rainfall (≥ 7 cm) during past 24 hours (from 0830 hrs IST of 03rd December to 0830 hrs IST of 04th December) over Tamilnadu, Puducherry & Karaikal is placed at Annexure-1.

The system is under continuous surveillance and the concerned state governments are being informed regularly.

For details kindly visit www.rsmcnewdelhi.imd.gov.in, www.mausam.imd.gov.in

Annexure-1

Chief amounts of rainfall (≥ 7 cm) during past 24 hours (from 0830 hrs IST of 03rd December to 0830 hrs IST of 04th December) over Tamilnadu, Puducherry & Karaikal

Kollidam (dist Nagapattinam) - 36,

Chidambaram (dist Cuddalore) - 34,

Parangipettai (dist Cuddalore) - 26,

Manalmedu (dist Nagapattinam), Kurinjipadi (dist Cuddalore) - 25 each,

Thiruthuraiipoondi (dist Tiruvarur) - 22,

Sirkali (dist Nagapattinam) , Kodavasal (dist Tiruvarur) - 21 each,

Rameswaram (dist Ramanathapuram) - 20,

Peravurani (dist Thanjavur), Manjalaru (dist Thanjavur), Bhuvanagiri (dist Cuddalore), Mayiladuthurai (dist Nagapattinam)- 19 each,

Karambakudi (dist Pudukkottai), Pattukottai (dist Thanjavur)-17 each,

Madukkur (dist Thanjavur)-16,

Srimushnam (dist Cuddalore)-15,

Tindivanam (dist Villupuram), Nannilam (dist Tiruvarur), Thiruvudaimaruthur (dist Thanjavur)-14 each, Kumbakonam (dist Thanjavur), Ayyampettai (dist Thanjavur), Valangaiman (dist Tiruvarur), Panruti (dist Cuddalore), Ulundurpet (dist Villupuram)-13 each,

Aduthurai (dist Thanjavur), Alangudi (dist Pudukkottai), Pandavaiyar Head (dist Tiruvarur) 12 each, Tiruvarur (dist Tiruvarur), Budalur (dist Thanjavur), Mahabalipuram (dist Chengalpattu), Mannargudi (dist Tiruvarur)-11 each,

Vallam (dist Thanjavur), Perambalur (dist Perambalur), Thanjavur (dist Thanjavur), Thirumanur (dist Ariyalur) , Needamangalam (dist Tiruvarur)-10 each,

Sendurai (dist Ariyalur) , Tirukattupalli (dist Thanjavur) , Vilupuram (dist Villupuram) , Mylam Aws (dist Villupuram) , Cholavaram (dist Tiruvallur) , Vanur (dist Villupuram) , Gandarvakottai (dist Pudukkottai) , Marakkanam (dist Villupuram) , Chengalpattu (dist Chengalpattu) , Gingee (dist Villupuram) - 9 each, Keeranur (dist Pudukkottai) , Thalaignayer (dist Nagapattinam) , Agaram Seegoor (dist Perambalur) , Eraiyur (dist Perambalur) , Gummidipoondi (dist Tiruvallur) , Adirampatnam (dist Thanjavur) , Manamelkudi (dist Pudukkottai) , Pullambadi (dist Trichy) , Annavasal (dist Pudukkottai) , Samayapuram (dist Trichy) , Pamban (dist Ramanathapuram) , Perungalur (dist Pudukkottai) , Tarangambadi (dist Nagapattinam) - 8 each ,

Labbaikudikadu (dist Perambalur) , Tozhudur (dist Cuddalore) , Tirukoilur (dist Villupuram) , Thuvakudi Imti (dist Trichy) , Uthukottai (dist Tiruvallur) , Ariyalur (dist Ariyalur) , Anna UTY (dist Chennai) , Uthiramerur (dist Chengalpattu) , Tirupoondi (dist Nagapattinam) , Tirumayam (dist Pudukkottai) , Tondi (dist Ramanathapuram) , TRP Town (dist Trichy) - 7 each,

Contact: Cyclone Warning Division, Office of the Director General of Meteorology,
India Meteorological Department, Ministry of Earth Sciences.

Phone: (91) 11-24652484, FAX: (91) 11-24643128, 24623220, E-mail: cwdhq2008@gmail.com, Website: rsmcnwdelhi.imd.gov.in

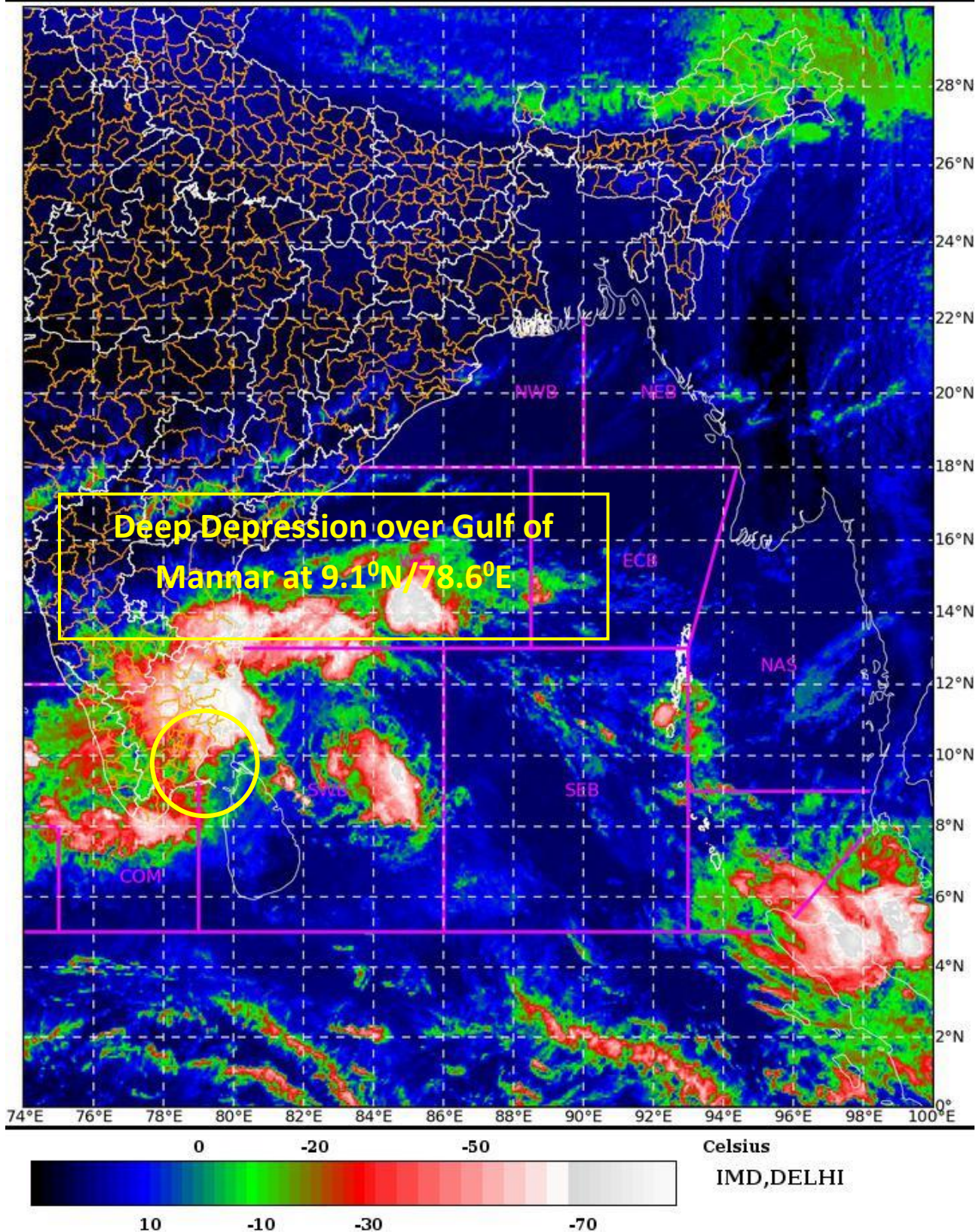
Spatial rainfall distribution: Isolated: <25%, A few: 26-50%, Many: 51-75%, Most: 76-100%

Rainfall amount (mm): Heavy rain: 64.5 – 115.5, Very heavy rain: 115.6 – 204.4, Extremely heavy rain: 204.5 or more.

SAT : INSAT-3D IMG 04-12-2020/(0430 to 0457) GMT
IMG_TIR1_TEMP 10.8 um 04-12-2020/(1000 to 1027) IST



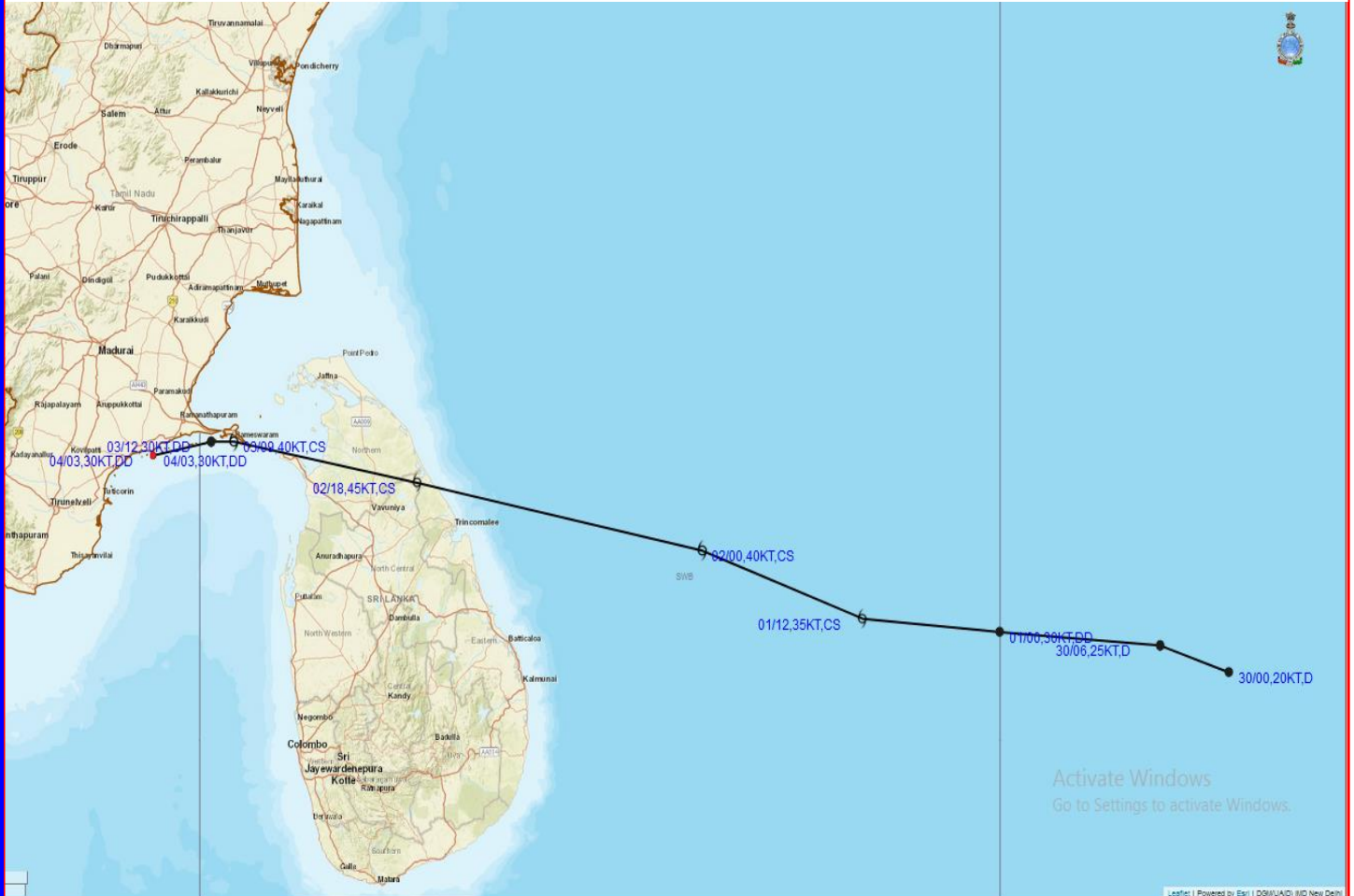
L1C Mercator



Contact: Cyclone Warning Division, Office of the Director General of Meteorology,
India Meteorological Department, Ministry of Earth Sciences.
Phone: (91) 11-24652484, FAX: (91) 11-24643128, 24623220, E-mail: cwdhq2008@gmail.com, Website: rsmcnwdelhi.imd.gov.in
Spatial rainfall distribution: Isolated: <25%, A few: 26-50%, Many: 51-75%, Most: 76-100%
Rainfall amount (mm): Heavy rain: 64.5 – 115.5, Very heavy rain: 115.6 – 204.4, Extremely heavy rain: 204.5 or more.



OBSERVED AND FORECAST TRACK ALONGWITH CONE OF UNCERTAINTY OF DEEP DEPRESSION OVER GULF OF MANNAR BASED ON 0300 UTC OF 4TH DECEMBER, 2020.



DATE/TIME IN UTC
 IST=UTC + 0530
 L: LOW PRESSURE AREA
 WML: WELL MARKED LOW PRESSURE AREA
 D: DEPRESSION (17-27 KT)
 DD: DEEP DEPRESSION (28-33 KT)
 CS: CYCLONIC STORM (34-47 KT)
 SCS: SEVERE CYCLONIC STORM (48-63KT)
 VSCS: VERY SEVERE CYCLONIC STORM (64-89 KT)
 ESCS: EXTREMELY SEVERE CYCLONIC STORM (90-119 KT)
 SuCS: SUPER CYCLONIC STORM (≥ 20 KT)

- LESS THAN 34 KT
- 34-47 KT
- ≥ 48 KT
- OBSERVED TRACK
- FORECAST TRACK
- CONE OF UNCERTAINTY

Contact: Cyclone Warning Division, Office of the Director General of Meteorology,
 India Meteorological Department, Ministry of Earth Sciences.
 Phone: (91) 11-24652484, FAX: (91) 11-24643128, 24623220, E-mail: cwdhq2008@gmail.com, Website: rsmcnwdelhi.imd.gov.in
 Spatial rainfall distribution: Isolated: <25%, A few: 26-50%, Many: 51-75%, Most: 76-100%
 Rainfall amount (mm): Heavy rain: 64.5 – 115.5, Very heavy rain: 115.6 – 204.4, Extremely heavy rain: 204.5 or more.