



Government of India
Ministry of Earth Sciences



India Meteorological Department

PRESS RELEASE - 1

Time of issue: 1300 hours IST

Dated: 25-09-2021

Sub: Deep Depression over Northwest & adjoining west-central Bay of Bengal: Cyclone Alert for north Andhra Pradesh and adjoining south Odisha coasts – Yellow Message

A low pressure area formed over eastcentral Bay of Bengal and neighbourhood in the morning (0830 hours IST) of 24th September. Under favourable environmental and sea conditions, it concentrated into a depression over eastcentral and adjoining northeast Bay of Bengal in the same evening (1730 hours IST). It further intensified into a deep depression over north & adjoining central Bay of Bengal in the early morning (0530 hours IST) of today, the 25th September. At 0830 hrs IST of today, it lay centered over northwest and adjoining westcentral BoB near latitude 18.4°N and longitude 89.3°E, about 470 km east-southeast of Gopalpur (Odisha) & 540 km east-northeast of Kalingapatnam (Andhra Pradesh).

It is likely to intensify into a Cyclonic Storm during next 06 hours. It is likely to move nearly westwards and cross north Andhra Pradesh - south Odisha coasts between Vishakhapatnam & Gopalpur around Kalingapatnam by evening of 26th September, 2021.

Forecast track and intensity are given in the following table:

Date/Time(IST)	Position (Lat. °N/ long. °E)	Maximum sustained surface wind speed (Kmph)	Category of cyclonic disturbance
25.09.21/0830	18.4/89.3	55-65 gusting to 75	Deep Depression
25.09.21/1730	18.5/87.8	65-75 gusting to 85	Cyclonic Storm
26.09.21/0530	18.6/86.1	75-85 gusting to 95	Cyclonic Storm
26.09.21/1730	18.6/84.4	70-80 gusting to 90	Cyclonic Storm
27.09.21/0530	18.8/82.8	50-60 gusting to 70	Deep Depression
27.09.21/1730	19.0/81.2	40-50 gusting to 60	Depression

Warnings:

(i) Rainfall

- 25th Sept.: Light to moderate rainfall at many places with heavy rainfall at isolated places likely over Gangetic West Bengal, Odisha and Coastal Andhra Pradesh.
- 26th Sept.: Light to moderate rainfall at most places with heavy to very heavy falls at a few places & extremely heavy falls at isolated places very likely over south Odisha and north coastal Andhra Pradesh; heavy to very heavy falls at isolated places is also likely over Telangana and heavy falls at isolated places over north interior Odisha & Chhattisgarh.
- 27th Sept.: Light to moderate rainfall at most places with heavy to very heavy & extremely heavy falls at isolated places very likely over south Chhattisgarh; heavy to very heavy falls at isolated places over Odisha, Telangana & Vidarbha and heavy rainfall at isolated places over coastal West Bengal & north Chattisgarh.

(ii) Wind warning

- 25th Sept: Squally wind speed reaching 55-65 kmph gusting to 75 kmph very likely over Northwest and adjoining Westcentral Bay of Bengal and increase gradually becoming gale wind speed reaching 65-75 kmph gusting to 85 kmph from the evening and 75-85 kmph gusting to 95 kmph from 26th morning till evening.

Contact: Cyclone Warning Division, Office of the Director General of Meteorology,
India Meteorological Department, Ministry of Earth Sciences.

Phone: (91) 11-24652484, FAX: (91) 11-24643128, 24623220, E-mail: cwdhq2008@gmail.com, Website: rsmcnewdelhi.imd.gov.in

Spatial rainfall distribution: Isolated: <25%, A few: 26-50%, Many: 51-75%, Most: 76-100%

Rainfall amount (mm): Heavy rain: 64.5 – 115.5, Very heavy rain: 115.6 – 204.4, Extremely heavy rain: 204.5 or more.

- Squally wind speed reaching 40-50 kmph gusting to 60 kmph likely to prevail along and off Odisha-North Andhra Pradesh coasts. It will gradually increase becoming gale wind speed reaching 75-85 kmph gusting to 95 kmph from afternoon of 26th till midnight along & off north Andhra Pradesh (Srikakulam, Vizianagaram, Visakhapatnam Districts) and south Odisha coasts (Ganjam, Gajapati Districts), 55 -65 kmph gusting to 75 kmph along & off Khordha,Puri, Raigada & Koraput districts, 50 -60 kmph gusting to 70 kmph over Navrangpur & Malkangiri districts of Odisha. Squally wind speed reaching 40 -50 kmph gusting to 60 kmph likely to prevail along & off remaining parts of Odisha & Andhra Pradesh & West Bengal coasts on 26th Sept. and over northeast Bay of Bengal on 25th & 26th Sept.

(iii) Sea condition

- Sea condition will be rough to very rough over east-central & adjoining northeast Bay of Bengal on 25th & 26th Sept.
- Sea condition will be rough to very rough over Northwest and adjoining Westcentral Bay of Bengal and along and off Odisha, West Bengal and North Andhra Pradesh coasts during next 12 hours and become High from today evening till 26th Sept. evening.
- Sea condition will be rough to very rough over Northwest Bay of Bengal and along and off Odisha-north Andhra Pradesh coasts on 27th Sept.

(iv) Storm surge warning

Tidal wave of about 0.5 m height above the astronomical tide likely to inundate low lying areas of Srikakulam, Vizianagaram, Ganjam districts during the time of landfall.

(iv) Fishermen Warning

- The fishermen are advised not to venture into east-central & adjoining northeast Bay of Bengal and Andaman Sea on 25th & 26th Sept.
- The fishermen are advised not to venture into northwest & adjoining westcentral Bay of Bengal and along & off Odisha, West Bengal & North Andhra Pradesh coasts till 27th Sept.

(v) EXPECTED IMPACT & ACTION SUGGESTED due to Strong winds & very Heavy/Extremely heavy Rainfall.

- Damage to thatched huts.
- Minor damage to power and communication lines due to breaking of branches and uprooting of trees.
- Major damage to Kutcha and minor damage to Pucca roads.
- Some damage to paddy crops, banana, papaya trees and orchards.
- Sea water inundation in low lying areas after erosion of Kutcha embankments.
- Localized Flooding of roads, inundation and water logging in low lying areas and closure of underpasses mainly in urban areas of the above region.
- Occasional reduction in visibility due to heavy rainfall.
- Disruption of traffic in cities due to water logging in roads.
- Possibilities of damage to vulnerable structure.
- Localized Landslides/Mudslides
- Damage to horticulture and standing crops in some areas due to inundation and strong winds.
- It may lead to riverine flooding in some river catchments (for riverine flooding please visit Web page of CWC)

Contact: Cyclone Warning Division, Office of the Director General of Meteorology,
India Meteorological Department, Ministry of Earth Sciences.

Phone: (91) 11-24652484, FAX: (91) 11-24643128, 24623220, E-mail:cwdhq2008@gmail.com, Website: rsmcnewdelhi.imd.gov.in

Spatial rainfall distribution: Isolated: <25%, A few: 26-50%, Many: 51-75%, Most: 76-100%

Rainfall amount (mm): Heavy rain: 64.5 – 115.5, Very heavy rain: 115.6 – 204.4, Extremely heavy rain: 204.5 or more.

B. Action Suggested

- Check for traffic congestion on your route before leaving for your destination.
- Follow any traffic advisories that are issued in this regard.
- Avoid going to areas that face the water logging problems often.
- Avoid staying in vulnerable structure.
- Follow IMD warnings for updates
- Complete suspension of fishing operations, onshore & off-shore activities over the above region till 27th Sept. morning.

Kindly visit www.rsmcnewdelhi.imd.gov.in and www.mausam.imd.gov.in for regular updates.

Contact: Cyclone Warning Division, Office of the Director General of Meteorology,
India Meteorological Department, Ministry of Earth Sciences.

Phone: (91) 11-24652484, FAX: (91) 11-24643128, 24623220, E-mail: cwdhq2008@gmail.com, Website: rsmcnewdelhi.imd.gov.in

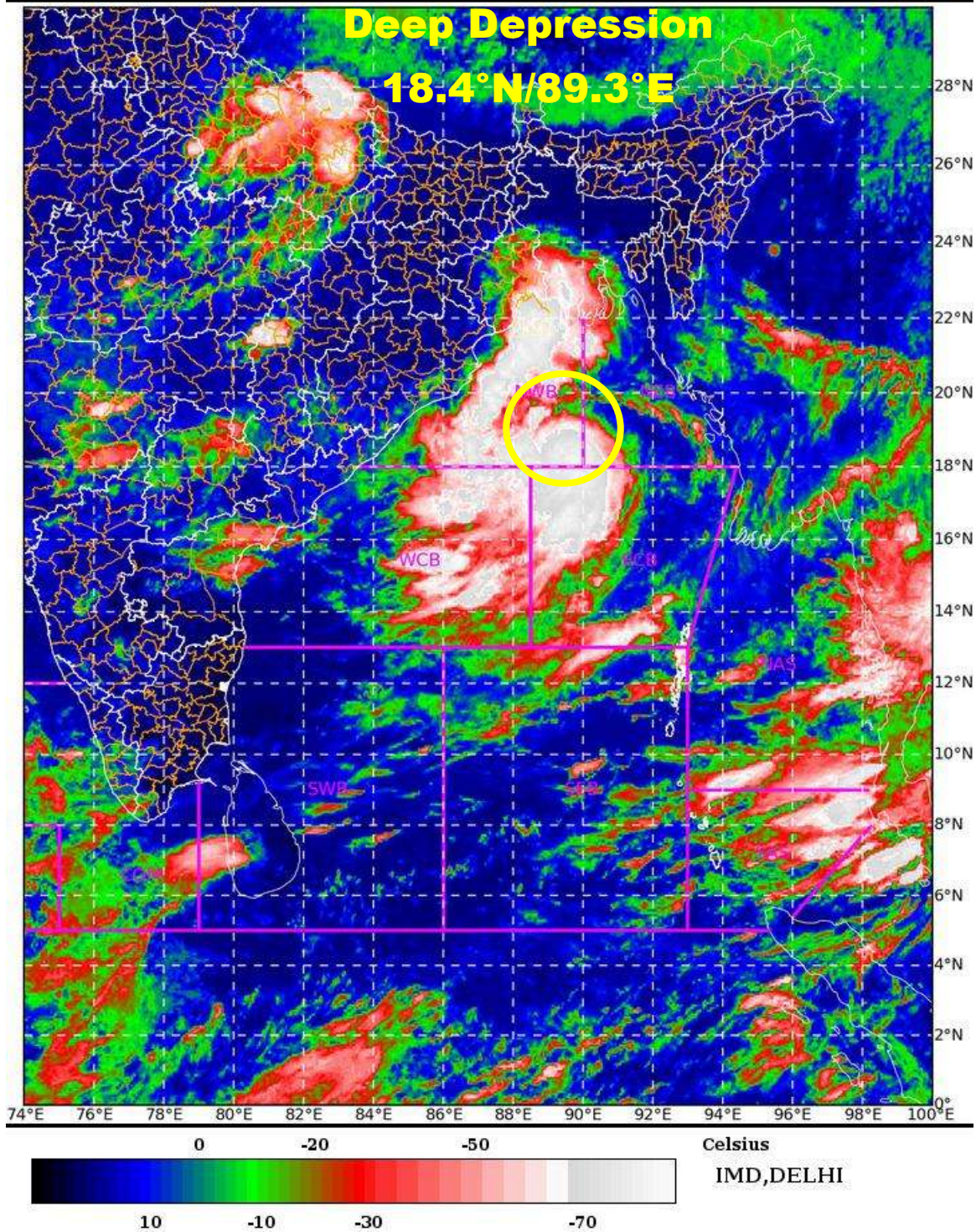
Spatial rainfall distribution: Isolated: <25%, A few: 26-50%, Many: 51-75%, Most: 76-100%

Rainfall amount (mm): Heavy rain: 64.5 – 115.5, Very heavy rain: 115.6 – 204.4, Extremely heavy rain: 204.5 or more.

SAT : INSAT-3D IMG 25-09-2021/(0400 to 0426) GMT

IMG_TIR1_TEMP 10.8 um 25-09-2021/(0930 to 0956) IST

L1C Mercator



Contact: Cyclone Warning Division, Office of the Director General of Meteorology,
India Meteorological Department, Ministry of Earth Sciences.

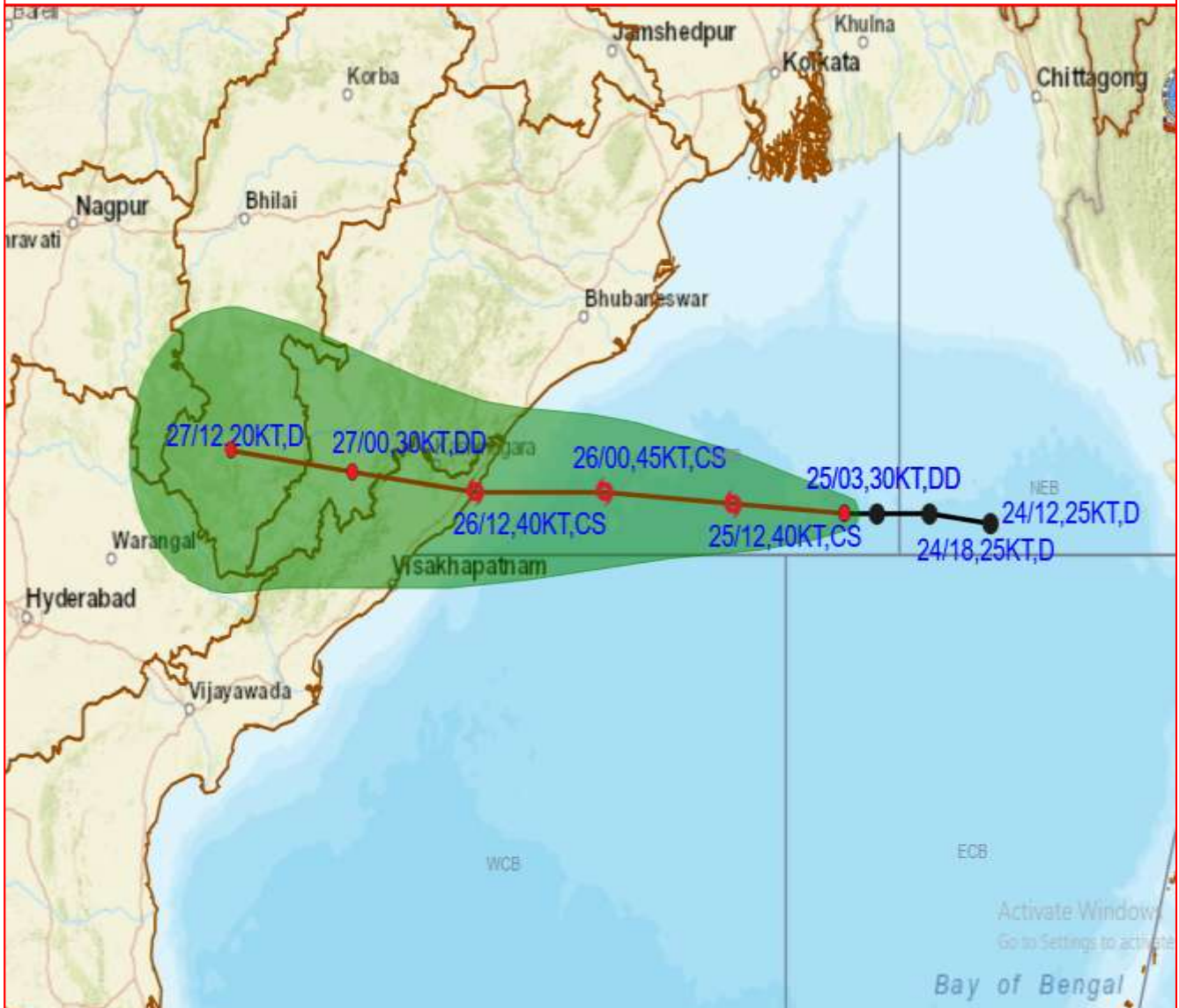
Phone: (91) 11-24652484, FAX: (91) 11-24643128, 24623220, E-mail: cwdhq2008@gmail.com, Website: rsmcnewdelhi.imd.gov.in

Spatial rainfall distribution: Isolated: <25%, A few: 26-50%, Many: 51-75%, Most: 76-100%

Rainfall amount (mm): Heavy rain: 64.5 – 115.5, Very heavy rain: 115.6 – 204.4, Extremely heavy rain: 204.5 or more.



OBSERVED AND FORECAST TRACK OF DEEP DEPRESSION OVER NORTHWEST AND ADJOINING WESTCENTRAL BAY OF BENGAL BASED ON 0300 UTC OF 25TH SEPTEMBER, 2021



DATE/TIME IN UTC
IST=UTC + 0530
L: LOW PRESSURE AREA
WML: WELL MARKED LOW PRESSURE AREA
D: DEPRESSION (17-27 KT)
DD: DEEP DEPRESSION (28-33 KT)
CS: CYCLONIC STORM (34-47 KT)
SCS: SEVERE CYCLONIC STORM (48-63KT)
VSCS: VERY SEVERE CYCLONIC STORM (64-89 KT)
ESCS: EXTREMELY SEVERE CYCLONIC STORM (90-119 KT)
SuCS: SUPER CYCLONIC STORM (≥ 120 KT)

- LESS THAN 34 KT
- 34-47 KT
- ≥ 48 KT
- OBSERVED TRACK
- FORECAST TRACK
- CONE OF UNCERTAINTY

Contact: Cyclone Warning Division, Office of the Director General of Meteorology,
India Meteorological Department, Ministry of Earth Sciences.

Phone: (91) 11-24652484, FAX: (91) 11-24643128, 24623220, E-mail: cwdhq2008@gmail.com, Website: rsmcnewdelhi.imd.gov.in

Spatial rainfall distribution: Isolated: <25%, A few: 26-50%, Many: 51-75%, Most: 76-100%

Rainfall amount (mm): Heavy rain: 64.5 – 115.5, Very heavy rain: 115.6 – 204.4, Extremely heavy rain: 204.5 or more.



OBSERVED AND FORECAST TRACK ALONGWITH QUADRANT WIND DISTRIBUTION OF DEEP DEPRESSION OVER NORTHWEST AND ADJOINING WESTCENTRAL BAY OF BENGAL BASED ON 0300 UTC OF 25TH SEPTEMBER, 2021



DATE/TIME IN UTC

IST=UTC + 0530

L: LOW PRESSURE AREA

WML: WELL MARKED LOW PRESSURE AREA

D: DEPRESSION (17-27 KT)

DD: DEEP DEPRESSION (28-33 KT)

CS: CYCLONIC STORM (34-47 KT)

SCS: SEVERE CYCLONIC STORM (48-63KT)

VSCS: VERY SEVERE CYCLONIC STORM (64-89 KT)

ESCS: EXTREMELY SEVERE CYCLONIC STORM (90-119 KT)

SuCS: SUPER CYCLONIC STORM (≥ 120 KT)

● LESS THAN 34 KT

○ 34-47 KT

● ≥ 48 KT

— OBSERVED TRACK

— FORECAST TRACK

▲ CONE OF UNCERTAINTY

AREA OF MAXIMUM SUSTAINED WIND SPEED:

■ 28-33 KT (52-61 KMPH)

■ 34-49 KT (62-91 KMPH)

■ 50-63 KT (92-117 KMPH)

■ ≥ 64 KT (≥118 KMPH)

IMPACT OVER THE SEA

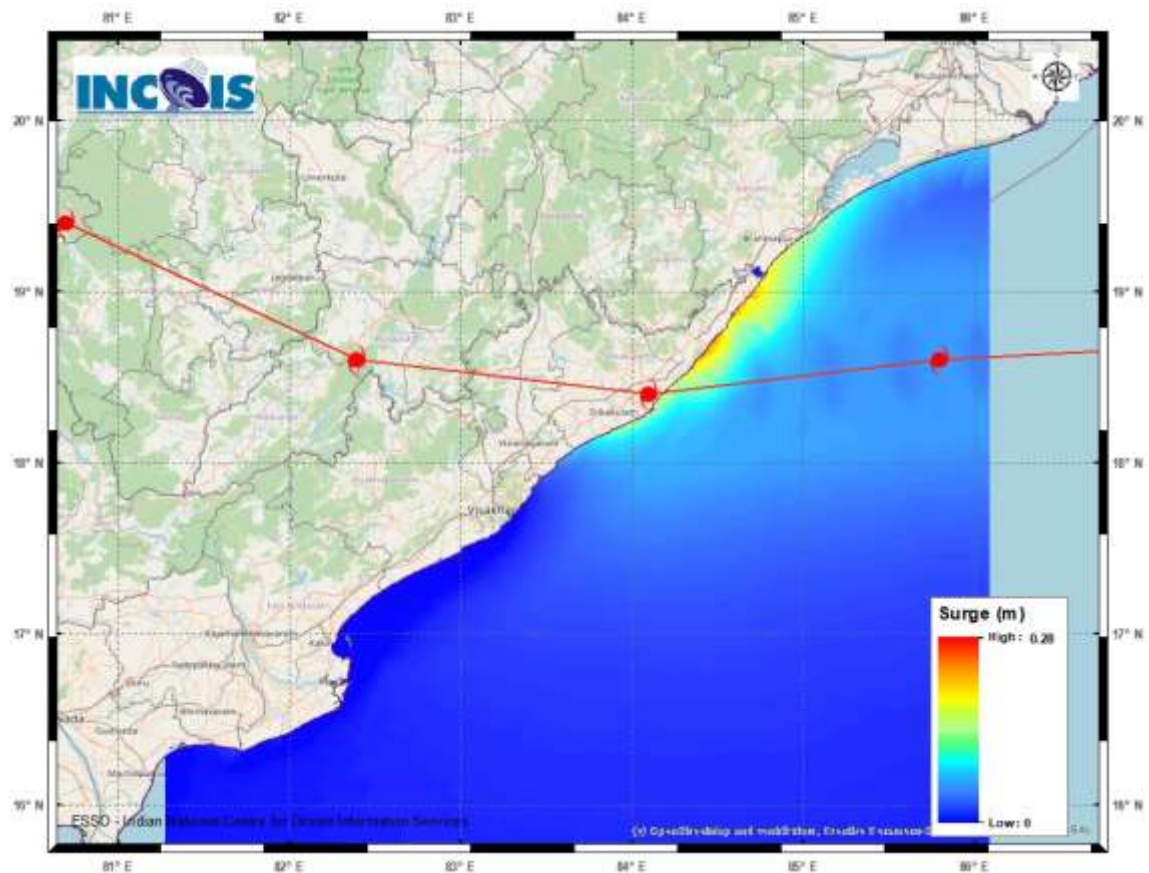
MSW (knot/kmph)	Impact	Action
28-33 (52-61)	Very rough seas	Total suspension of fishing operations
34-49 (62-91)	High to very high seas	Total suspension of fishing operations
50-63 (92-117)	Very high seas	Total suspension of fishing operations
≥ 64 (≥118)	Phenomenal	Total suspension of fishing operations

India Meteorological Department, Ministry of Earth Sciences.

Phone: (91) 11-24652484, FAX: (91) 11-24643128, 24623220, E-mail: cwdhq2008@gmail.com, Website: rsmcnewdelhi.imd.gov.in

Spatial rainfall distribution: Isolated: <25%, A few: 26-50%, Many: 51-75%, Most: 76-100%

Rainfall amount (mm): Heavy rain: 64.5 – 115.5, Very heavy rain: 115.6 – 204.4, Extremely heavy rain: 204.5 or more.



Storm surge graphic from INCOIS for the current depression (BoB/04/2021)

Peak storm surge of upto 0.5m over and above the astronomical tide near Tekkali, Srikakulam, Andhra Pradesh.

Contact: Cyclone Warning Division, Office of the Director General of Meteorology,
India Meteorological Department, Ministry of Earth Sciences.

Phone: (91) 11-24652484, FAX: (91) 11-24643128, 24623220, E-mail: cwdhq2008@gmail.com, Website: rsmcnewdelhi.imd.gov.in

Spatial rainfall distribution: Isolated: <25%, A few: 26-50%, Many: 51-75%, Most: 76-100%

Rainfall amount (mm): Heavy rain: 64.5 – 115.5, Very heavy rain: 115.6 – 204.4, Extremely heavy rain: 204.5 or more.