



Government of India  
Ministry of Earth Sciences



India Meteorological Department

## PRESS RELEASE - 3

Time of issue: 1400 hours IST

Dated: 27-09-2021

**Sub: Cyclonic Storm ‘Gulab’ (pronounced as Gul-Aab) crossed North Andhra Pradesh & adjoining south Odisha coasts and weakened into a deep depression**

The cyclonic storm “Gulab” moved nearly westwards and crossed North Andhra Pradesh and adjoining south Odisha coasts near 18.4°N/84.2°E about 20 km north of Kalingapatnam with wind speed of 75-85 gusting to 95 kmph during 1930-2030 IST of 26<sup>th</sup> September. Further moving westwards, it weakened into a deep depression over North Andhra Pradesh and adjoining south Odisha in the early hours (0230 IST) of today, the 27<sup>th</sup> September, 2021. At 0830 hours IST of today, the 27<sup>th</sup> Sep. 2021, it lay centered over south Odisha and adjoining south Chhattisgarh near Lat. 18.4°N and Long. 82.5°E, about 90 km southeast of Jagdalpur (Chhattisgarh) and 65 km east-northeast of Malkangiri (Odisha).

It is likely to move nearly westwards and weaken into a Depression during next 06 hours and into a well marked Low pressure area during subsequent 24 hours. The system is likely to emerge into northeast Arabian Sea and adjoining Gujarat coast around 30<sup>th</sup> September evening and there is likelihood for the system to further intensify over northeast Arabian Sea during the subsequent 24 hours.

Rainfall realised in cm (7 cm or more) during past 24 hours ending at 0830 hours IST of 27.09.2021 over Coastal Andhra Pradesh and Odisha is given in **Annexure**.

Forecast track and intensity are given in the following table:

Date/Time(IST)	Position (Lat. °N/ long. °E)	Maximum sustained surface wind speed (Kmph)	Category of cyclonic disturbance
27.09.21/0830	18.4/82.5	50-60 gusting to 70	Deep Depression
27.09.21/1130	18.5/82.0	50-60 gusting to 70	Deep Depression
27.09.21/1730	18.6/81.2	40-50 gusting to 60	Depression
27.09.21/2330	18.7/80.4	30-40 gusting to 50	Depression

### Warnings:

#### (i) Rainfall

- 27<sup>th</sup> Sept.: Light to moderate rainfall at most places with **heavy to very heavy & extremely heavy falls at isolated places** very likely over Telangana, Marathwada & Vidarbha, north Coastal Andhra Pradesh & south Chhattisgarh and heavy to very heavy falls at isolated places over south Odisha, Rayalaseema and Madhya Maharashtra.
- 28<sup>th</sup> Sept.: Light to moderate rainfall at most places with **heavy to very heavy & extremely heavy falls at isolated places** very likely over Konkan, Madhya Maharashtra and Gujarat region.

#### (ii) Wind warning

- Squally wind, speed reaching 40-50 kmph gusting to 60 kmph, very likely to prevail over Westcentral & adjoining northwest Bay of Bengal off Andhra Pradesh and adjoining south Odisha coasts during next 06 hours and decrease thereafter.

Contact: Cyclone Warning Division, Office of the Director General of Meteorology,  
India Meteorological Department, Ministry of Earth Sciences.

Phone: (91) 11-24652484, FAX: (91) 11-24643128, 24623220, E-mail: [cwdhq2008@gmail.com](mailto:cwdhq2008@gmail.com), Website: [rsmcnewdelhi.imd.gov.in](http://rsmcnewdelhi.imd.gov.in)

Spatial rainfall distribution: Isolated: <25%, A few: 26-50%, Many: 51-75%, Most: 76-100%

Rainfall amount (mm): Heavy rain: 64.5 – 115.5, Very heavy rain: 115.6 – 204.4, Extremely heavy rain: 204.5 or more.

- Squally wind, speed reaching 50-60 kmph gusting to 70 kmph, is likely to prevail over north Andhra Pradesh (Srikakulam, Vizianagaram, Visakhapatnam Districts) and south Odisha districts of Raigada, Koraput, Navrangpur and Malkangiri during next 06 hours and decrease thereafter becoming 35-45 gusting to 55 kmph over these areas for subsequent 12 hours.
- Squally wind, speed reaching 45-55 kmph gusting to 65 kmph likely to prevail over Sukma, Bastar & Dantewada districts of south Chhattisgarh and squally winds speed reaching 40 kmph to 50 kmph gusting to 60 kmph likely to prevail over north Telangana during next 12 hours.

**(iii) Sea condition**

- Sea condition will be rough to very rough over Westcentral and adjoining Northwest Bay of Bengal and along and off Andhra Pradesh and adjoining Odisha coasts during next 06 hours and improve gradually thereafter.

**(iv) Fishermen Warning**

- The fishermen are advised not to venture into Westcentral and adjoining Northwest Bay of Bengal and along and off Andhra Pradesh and adjoining Odisha coasts during next 06 hours.

**(vii) EXPECTED IMPACT & ACTION SUGGESTED due to Strong winds & very Heavy/Extremely heavy Rainfall.**

- Partial Damage to thatched huts.
- Minor damage to power and communication lines due to breaking of branches and uprooting of trees.
- Major damage to Kutcha and minor damage to Pucca roads.
- Localized Flooding of roads, inundation and water logging in low lying areas and closure of underpasses mainly in urban areas of the above region.
- Occasional reduction in visibility due to heavy rainfall.
- Disruption of traffic in cities due to water logging in roads.
- Possibilities of damage to vulnerable structure.
- Localized Landslides/Mudslides
- Damage to standing crops and horticulture including paddy, banana, papaya trees and orchards due to inundation and strong winds.
- It may lead to riverine flooding in some river catchments (for riverine flooding please visit Web page of CWC)

**Action Suggested.**

- Avoid staying in vulnerable structure.
- Avoid going to areas that face the water logging problems often.
- Check for traffic congestion on your route before leaving for your destination.
- Follow any traffic advisories that are issued in this regard.
- Follow IMD warnings for updates

Kindly visit [www.rsmcnewdelhi.imd.gov.in](http://www.rsmcnewdelhi.imd.gov.in) and [www.mausam.imd.gov.in](http://www.mausam.imd.gov.in) for regular updates  
The intensification & likely movement of the system is under continuous surveillance and the concerned state governments are being informed regularly.

---

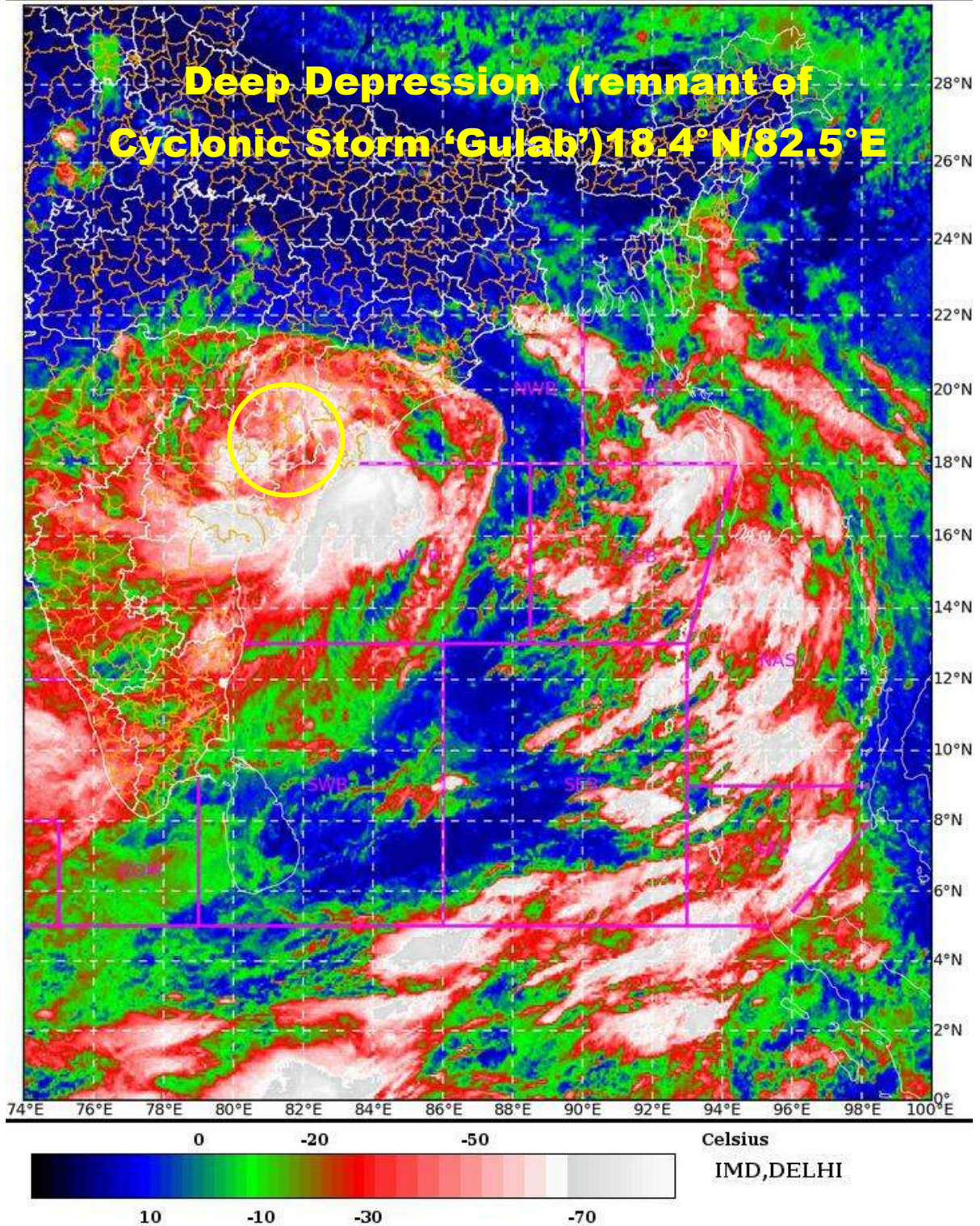
**Contact: Cyclone Warning Division, Office of the Director General of Meteorology,  
India Meteorological Department, Ministry of Earth Sciences.**

**Phone: (91) 11-24652484, FAX: (91) 11-24643128, 24623220, E-mail: [cwdhq2008@gmail.com](mailto:cwdhq2008@gmail.com), Website: [rsmcnewdelhi.imd.gov.in](http://rsmcnewdelhi.imd.gov.in)**

**Spatial rainfall distribution: Isolated: <25%, A few: 26-50%, Many: 51-75%, Most: 76-100%**

**Rainfall amount (mm): Heavy rain: 64.5 – 115.5, Very heavy rain: 115.6 – 204.4, Extremely heavy rain: 204.5 or more.**

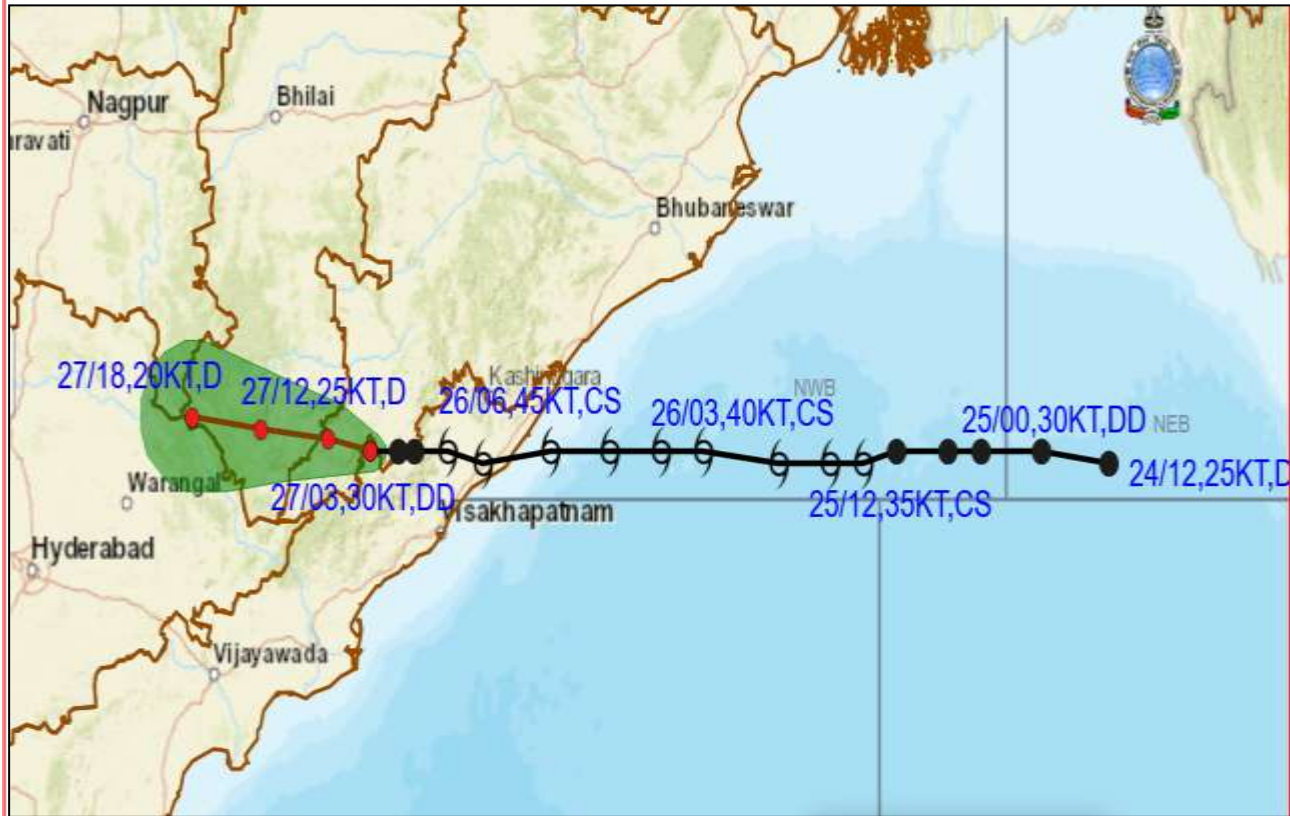
SAT : INSAT-3D IMG            27-09-2021/(0500 to 0526) GMT  
IMG\_TIR1\_TEMP 10.8 um        27-09-2021/(1030 to 1056) IST  
L1C Mercator



Contact: Cyclone Warning Division, Office of the Director General of Meteorology,  
India Meteorological Department, Ministry of Earth Sciences.  
Phone: (91) 11-24652484, FAX: (91) 11-24643128, 24623220, E-mail: [cwdhq2008@gmail.com](mailto:cwdhq2008@gmail.com), Website: [rsmcnewdelhi.imd.gov.in](http://rsmcnewdelhi.imd.gov.in)  
Spatial rainfall distribution: Isolated: <25%, A few: 26-50%, Many: 51-75%, Most: 76-100%  
Rainfall amount (mm): Heavy rain: 64.5 – 115.5, Very heavy rain: 115.6 – 204.4, Extremely heavy rain: 204.5 or more.



**OBSERVED AND FORECAST TRACK ALONGWITH QUADRANT WIND DISTRIBUTION OF DEEP DEPRESSION (REMNANT OF CYCLONIC STORM GULAB) OVER SOUTH ODISHA AND ADJOINING SOUTH CHHATISGARH BASED ON 0300 UTC OF 27TH SEPTEMBER, 2021**



DATE/TIME IN UTC  
 IST=UTC + 0530  
 L: LOW PRESSURE AREA  
 WML: WELL MARKED LOW PRESSURE AREA  
 D: DEPRESSION (17-27 KT)  
 DD: DEEP DEPRESSION (28-33 KT)  
 CS: CYCLONIC STORM (34-47 KT)  
 SCS: SEVERE CYCLONIC STORM (48-63KT)  
 VSCS: VERY SEVERE CYCLONIC STORM (64-89 KT)  
 ESCS: EXTREMELY SEVERE CYCLONIC STORM (90-119 KT)  
 SuCS: SUPER CYCLONIC STORM (≥ 120 KT)

● LESS THAN 34 KT  
 ○ 34-47 KT  
 ● ≥ 48 KT  
 — OBSERVED TRACK  
 — FORECAST TRACK  
 ▲ CONE OF UNCERTAINTY  
 AREA OF MAXIMUM SUSTAINED WIND SPEED:  
 ■ 28-33 KT (52-61 KMPH)  
 ■ 34-49 KT (62-91 KMPH)  
 ■ 50-63 KT (92-117 KMPH)  
 ■ ≥ 64 KT (≥118 KMPH)

**IMPACT OVER THE SEA**

MSW (knot/kmph)	Impact	Action
28-33 (52-61)	Very rough seas	Total suspension of fishing operations
34-49 (62-91)	High to very high seas	Total suspension of fishing operations
50-63 (92-117)	Very high seas	Total suspension of fishing operations
≥ 64 (≥118)	Phenomenal	Total suspension of fishing operations

Contact: Cyclone Warning Division, Office of the Director General of Meteorology,  
 India Meteorological Department, Ministry of Earth Sciences.

Phone: (91) 11-24652484, FAX: (91) 11-24643128, 24623220, E-mail: [cwdhq2008@gmail.com](mailto:cwdhq2008@gmail.com), Website: [rsmcnewdelhi.imd.gov.in](http://rsmcnewdelhi.imd.gov.in)

Spatial rainfall distribution: Isolated: <25%, A few: 26-50%, Many: 51-75%, Most: 76-100%

Rainfall amount (mm): Heavy rain: 64.5 – 115.5, Very heavy rain: 115.6 – 204.4, Extremely heavy rain: 204.5 or more.



**OBSERVED AND FORECAST TRACK OF DEEP DEPRESSION (REMNANT OF CYCLONIC STORM GULAB) OVER SOUTH ODISHA AND ADJOINING SOUTH CHHATISGARH BASED ON 0300 UTC OF 27<sup>TH</sup> SEPTEMBER, 2021**



DATE/TIME IN UTC  
IST=UTC + 0530

L: LOW PRESSURE AREA

WML: WELL MARKED LOW PRESSURE AREA

D: DEPRESSION (17-27 KT)

DD: DEEP DEPRESSION (28-33 KT)

CS: CYCLONIC STORM (34-47 KT)

SCS: SEVERE CYCLONIC STORM (48-63KT)

VSCS: VERY SEVERE CYCLONIC STORM (64-89 KT)

ESCS: EXTREMELY SEVERE CYCLONIC STORM (90-119 KT)

SuCS: SUPER CYCLONIC STORM ( $\geq 20$  KT)

● LESS THAN 34 KT

○ 34-47 KT

○  $\geq 48$  KT

— OBSERVED TRACK

— FORECAST TRACK

▲ CONE OF UNCERTAINTY

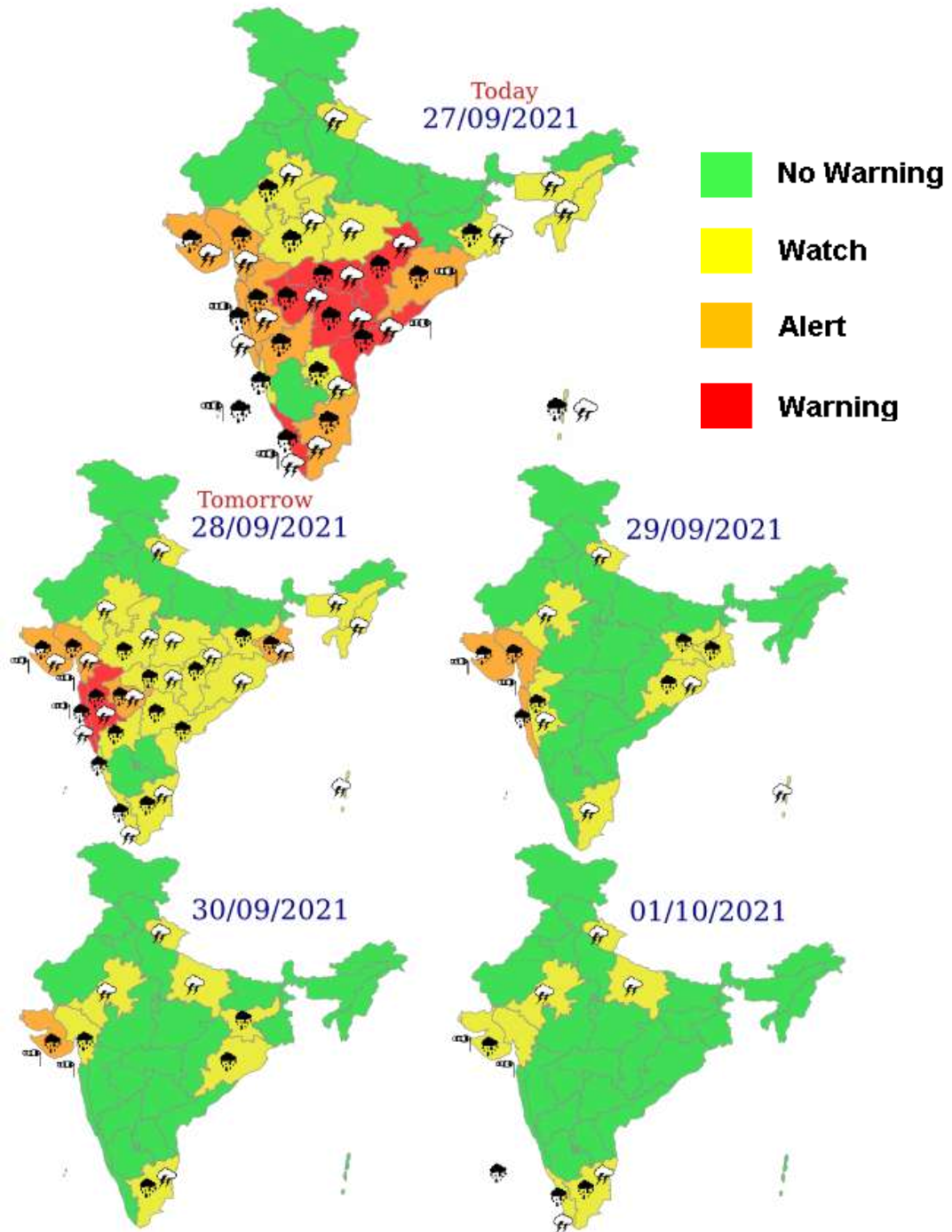
Contact: Cyclone Warning Division, Office of the Director General of Meteorology,  
India Meteorological Department, Ministry of Earth Sciences.

Phone: (91) 11-24652484, FAX: (91) 11-24643128, 24623220, E-mail: [cwdhq2008@gmail.com](mailto:cwdhq2008@gmail.com), Website: [rsmcnewdelhi.imd.gov.in](http://rsmcnewdelhi.imd.gov.in)

Spatial rainfall distribution: Isolated: <25%, A few: 26-50%, Many: 51-75%, Most: 76-100%

Rainfall amount (mm): Heavy rain: 64.5 – 115.5, Very heavy rain: 115.6 – 204.4, Extremely heavy rain: 204.5 or more.

## Sub-division wise heavy rainfall warning for next 5 days



Contact: Cyclone Warning Division, Office of the Director General of Meteorology,  
India Meteorological Department, Ministry of Earth Sciences.

Phone: (91) 11-24652484, FAX: (91) 11-24643128, 24623220, E-mail: [cwdhq2008@gmail.com](mailto:cwdhq2008@gmail.com), Website: [rsmcnewdelhi.imd.gov.in](http://rsmcnewdelhi.imd.gov.in)

Spatial rainfall distribution: Isolated: <25%, A few: 26-50%, Many: 51-75%, Most: 76-100%

Rainfall amount (mm): Heavy rain: 64.5 – 115.5, Very heavy rain: 115.6 – 204.4, Extremely heavy rain: 204.5 or more.

**Rainfall realised in cm (7 cm or more) during past 24 hours ending at 0830 hours  
IST of 27.09.2021**

**Coastal Andhra Pradesh and Yanam**

Visakhapatnam, Gajapathinagaram and Nellimarla - 28 each, Visakhapatnam - 27, Mentada - 25, Pusapatirega - 24, Garividi, Denkada and Gantiyada - 19 each, Anakapalle and Salur - 18 each, Bondapalle 17, Cheepurupalle 16, Ranastalam and Therlam - 15 each, Chodavaram - 14, Vizianagaram, Vepada, Bheemunipatnam and Kalingapatnam 13 each, Bobbili, Araku Valley and Amalapuram - 12 each, Kakinada , Merakamudidam and Vijayawada - 11 each, Polavaram, Palakoderu, Chintalapudi and Koyyalagudem - 10 each, Chintapalle , Srungavarapukota, Palakonda, Tadepalligudem, Narsipatnam, Yanam, Bhimadole, Tanuku and Yelamanchili - 9 each, Palasa, Nuzvid, Seethanagaram and Parvathipuram - 8 each, Vararamachandrapur, Paderu, Balajipeta, Chintur, Eluru, Mandasa, Garugubilli, Tekkali, Kaikalur and Velairpad - 7 each.

**Odisha**

Pottangi - 15, Mahendragarh - 9, Mohana and Nandapur - 8, Lamataput , Semiliguda and R.Udayagiri - 7 each.