



Government of India
Ministry of Earth Sciences



India Meteorological Department

PRESS RELEASE - 5

Time of issue: 1240 hours IST

Dated: 03-10-2021

Sub: Severe Cyclonic Storm 'Shaheen' over northwest Arabian Sea

Yesterday's Severe Cyclonic Storm "Shaheen" over northwest Arabian Sea continued to move west-northwestwards until the mid-night of yesterday, the 2nd October 2021. Thereafter it started moving westwards for some time and subsequently re-curved west-southwestwards since the early morning of today, the 3rd October. Continuing to move further west-southwestwards, it lay centred at 0830 hrs IST of today, the 3rd October, 2021 over Gulf of Oman & adjoining northwest Arabian Sea, near latitude 24.2°N and longitude 59.0°E, about 1050 km west-northwest of Devbhoomi Dwarka (Gujarat), 200 km west-southwest of Chabahar Port (Iran) and 90 km northeast of Muscat (Oman).

The system is very likely to continue to move west-southwestwards towards Oman coast and weaken gradually. It is very likely to cross Oman coast between Long.56°E & 58°E, around 57°E, by early hours of 4th October 2021, as a Severe Cyclonic Storm with a maximum sustained wind speed of 90 – 100 kmph gusting to 110 kmph.

The system has moved away from the Indian coast and no adverse weather of any kind is expected over India.

Forecast track and intensity are given in the following table:

Date/Time(IST)	Position (Lat. °N/ long. °E)	Maximum sustained surface wind speed (Kmph)	Category of cyclonic disturbance
03.10.21/0830	24.2/59.0	110-120 gusting to 130	Severe Cyclonic Storm
03.10.21/1130	24.1/58.7	110-120 gusting to 130	Severe Cyclonic Storm
03.10.21/1730	24.0/58.0	100-110 gusting to 120	Severe Cyclonic Storm
03.10.21/2330	23.9/57.4	90-100 gusting to 110	Severe Cyclonic Storm
04.10.21/0530	23.8/56.6	60-70 gusting to 80	Cyclonic Storm
04.10.21/1730	23.5/55.2	25-35 gusting to 45	Well Marked Low

Warnings:

(i) **Wind warning**

Gale wind speed reaching 110-120 kmph gusting to 130 kmph likely to prevail over Gulf of Oman and adjoining northwest Arabian Sea during next 12 hours. It would gradually decrease becoming 100 - 110 Kmph gusting to 120 Kmph over Gulf of Oman from the night of today, the 03rd Oct., reduce further becoming 80-90 kmph gusting to 100 kmph over Gulf of Oman from the early hours of 04th Oct. and reduce substantially thereafter.

(ii) **Sea condition**

Sea condition will be high to very high over Gulf of Oman and adjoining northwest Arabian Sea till evening of today, the 03rd Oct. It would be high to very High over Gulf of Oman and adjoining north Oman coast from the night of 3rd October during subsequent 12 hours.

Contact: Cyclone Warning Division, Office of the Director General of Meteorology,
India Meteorological Department, Ministry of Earth Sciences.

Phone: (91) 11-24652484, FAX: (91) 11-24643128, 24623220, E-mail: cwdhq2008@gmail.com, Website: rsmcnewdelhi.imd.gov.in

Spatial rainfall distribution: Isolated: <25%, A few: 26-50%, Many: 51-75%, Most: 76-100%

Rainfall amount (mm): Heavy rain: 64.5 – 115.5, Very heavy rain: 115.6 – 204.4, Extremely heavy rain: 204.5 or more.

(iii) Fishermen Warning

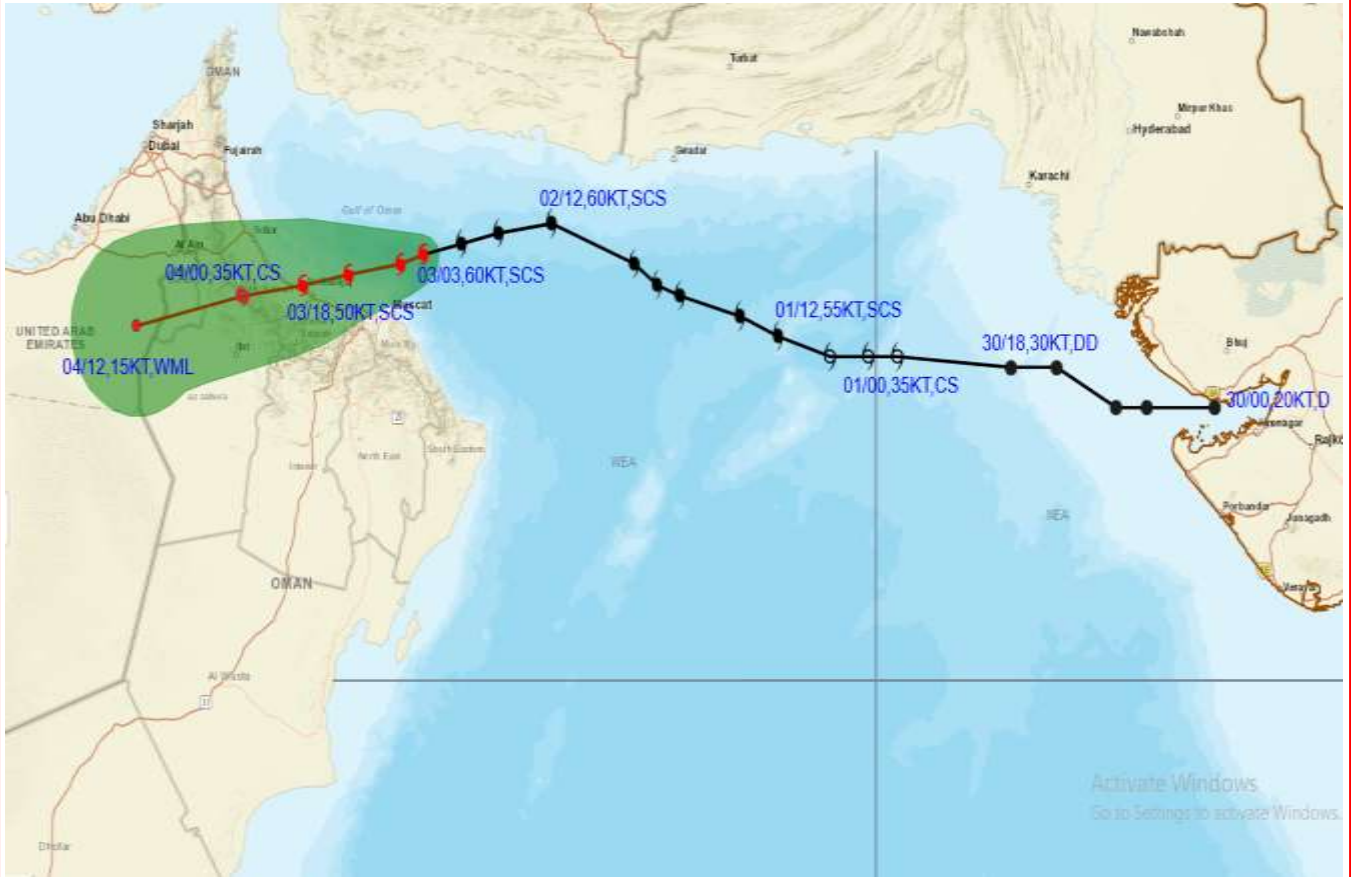
Fishermen are advised not to venture into northwest Arabian Sea, Gulf of Oman, and along & off north Oman coast till 4th October morning.

(iv) EXPECTED IMPACT & ACTION SUGGESTED

As the system is moving away from the Indian coast, no impact is likely over India. However, Fishermen as well as Mariners are advised to avoid the Sea areas comprising northwest Arabian Sea, Gulf of Oman and along & off north Oman coast till 4th October morning.



OBSERVED AND FORECAST TRACK ALONGWITH CONE OF UNCERTAINTY OF SEVERE CYCLONIC STORM "SHAHEEN" OVER GULF OF OMAN AND ADJOINING NORTHWEST ARABIAN SEA BASED ON 0300 UTC OF 3RD OCTOBER, 2021



DATE/TIME IN UTC
 IST=UTC + 0530
 L: LOW PRESSURE AREA
 WML: WELL MARKED LOW PRESSURE AREA
 D: DEPRESSION (17-27 KT)
 DD: DEEP DEPRESSION (28-33 KT)
 CS: CYCLONIC STORM (34-47 KT)
 SCS: SEVERE CYCLONIC STORM (48-63KT)
 VSCS: VERY SEVERE CYCLONIC STORM (64-89 KT)
 ESCS: EXTREMELY SEVERE CYCLONIC STORM (90-119 KT)
 SuCS: SUPER CYCLONIC STORM (\geq 120 KT)

- LESS THAN 34 KT
- 34-47 KT
- \geq 48 KT
- OBSERVED TRACK
- FORECAST TRACK
- CONE OF UNCERTAINTY

Contact: Cyclone Warning Division, Office of the Director General of Meteorology,
 India Meteorological Department, Ministry of Earth Sciences.

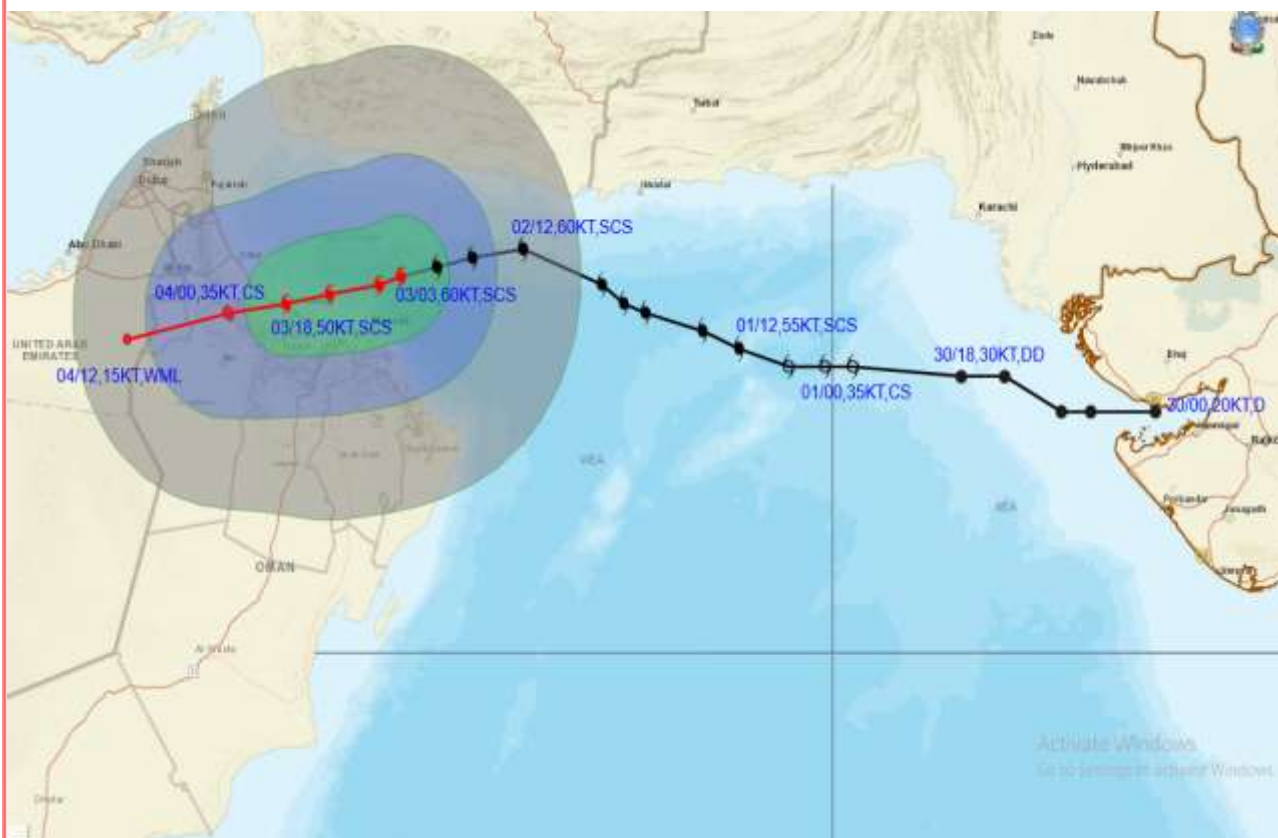
Phone: (91) 11-24652484, FAX: (91) 11-24643128, 24623220, E-mail: cwdhq2008@gmail.com, Website: rsmcnewdelhi.imd.gov.in

Spatial rainfall distribution: Isolated: <25%, A few: 26-50%, Many: 51-75%, Most: 76-100%

Rainfall amount (mm): Heavy rain: 64.5 – 115.5, Very heavy rain: 115.6 – 204.4, Extremely heavy rain: 204.5 or more.



OBSERVED AND FORECAST TRACK ALONGWITH QUADRANT WIND DISTRIBUTION OF SEVERE CYCLONIC STORM "SHAHEEN" OVER GULF OF OMAN AND ADJOINING NORTHWEST ARABIAN SEA BASED ON 0300 UTC OF 3RD OCTOBER, 2021



DATE/TIME IN UTC
 IST=UTC + 0530
 L: LOW PRESSURE AREA
 WML: WELL MARKED LOW PRESSURE AREA
 D: DEPRESSION (17-27 KT)
 DD: DEEP DEPRESSION (28-33 KT)
 CS: CYCLONIC STORM (34-47 KT)
 SCS: SEVERE CYCLONIC STORM (48-63KT)
 VSCS: VERY SEVERE CYCLONIC STORM (64-89 KT)
 ESCS: EXTREMELY SEVERE CYCLONIC STORM (90-119 KT)
 SuCS: SUPER CYCLONIC STORM (≥ 120 KT)

● LESS THAN 34 KT
 ○ 34.47 KT
 ● ≥ 48 KT
 — OBSERVED TRACK
 — FORECAST TRACK
 ▲ CONE OF UNCERTAINTY
 AREA OF MAXIMUM SUSTAINED WIND SPEED:
 ■ 28-33 KT (52-61 KMPH)
 ■ 34-49 KT (62-91 KMPH)
 ■ 50-63 KT (92-117 KMPH)
 ■ ≥ 64 KT (≥ 118 KMPH)

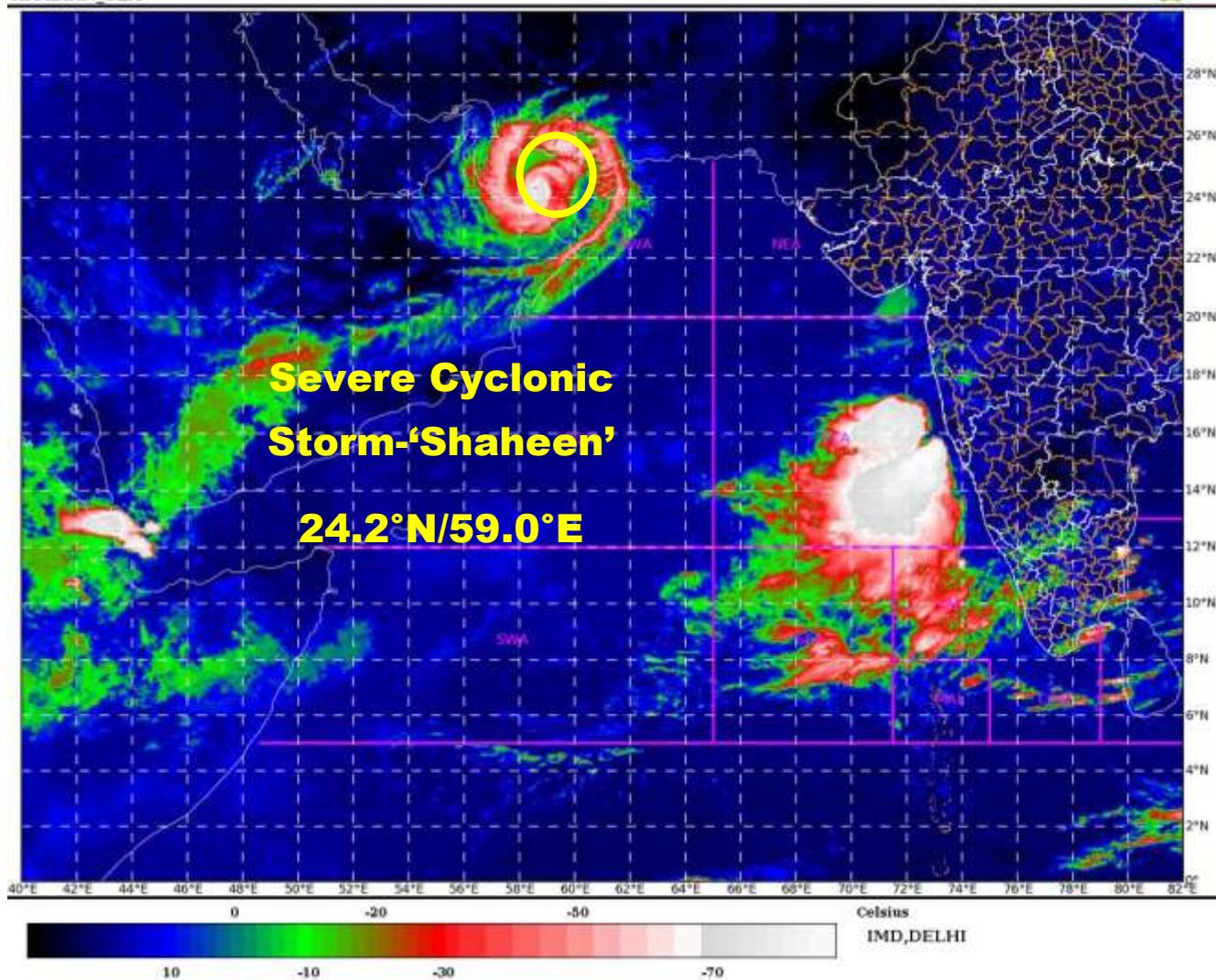
IMPACT OVER THE SEA

MSW (knot/kmph)	Impact	Action
28-33 (52-61)	Very rough seas	Total suspension of fishing operations
34-49 (62-91)	High to very high seas	Total suspension of fishing operations
50-63 (92-117)	Very high seas	Total suspension of fishing operations
≥ 64 (≥ 118)	Phenomenal	Total suspension of fishing operations

Contact: Cyclone Warning Division, Office of the Director General of Meteorology,
 India Meteorological Department, Ministry of Earth Sciences.
 Phone: (91) 11-24652484, FAX: (91) 11-24643128, 24623220, E-mail: cwdhq2008@gmail.com, Website: rsmcnewdelhi.imd.gov.in
 Spatial rainfall distribution: Isolated: <25%, A few: 26-50%, Many: 51-75%, Most: 76-100%
 Rainfall amount (mm): Heavy rain: 64.5 – 115.5, Very heavy rain: 115.6 – 204.4, Extremely heavy rain: 204.5 or more.

SAT : INSAT-3D IMG
IMG_TIR1_TEMP 10.8 um
ARABIAN_SEA

03-10-2021/(0430 to 0456) GMT
03-10-2021/(1000 to 1026) IST



Contact: Cyclone Warning Division, Office of the Director General of Meteorology,
India Meteorological Department, Ministry of Earth Sciences.

Phone: (91) 11-24652484, FAX: (91) 11-24643128, 24623220, E-mail: cwdhq2008@gmail.com, Website: rsmcnewdelhi.imd.gov.in

Spatial rainfall distribution: Isolated: <25%, A few: 26-50%, Many: 51-75%, Most: 76-100%

Rainfall amount (mm): Heavy rain: 64.5 – 115.5, Very heavy rain: 115.6 – 204.4, Extremely heavy rain: 204.5 or more.