



Government of India
Ministry of Earth Sciences



India Meteorological Department

PRESS RELEASE - 4

Time of issue: 1300 hours IST

Dated: 06-12-2021

Sub: Deep Depression (remnant of Cyclonic Storm 'JAWAD') weakened into a low pressure area

Yesterday's deep depression over westcentral Bay of Bengal (BoB) moved north-northeastwards and weakened into a depression over westcentral BoB about 30 km southeast of Paradip in the same evening (1730 hours IST of 5th December). Thereafter, it moved northeastwards and weakened into a well marked low pressure area over northwest BoB and adjoining West Bengal & Bangladesh coasts in the morning (0530 hours IST) and into a low pressure area over the same region in the forenoon (0830 hours IST) of today, the 6th December, 2021.

Under it's influence, heavy to very heavy rainfall very likely at isolated places over Tripura and heavy rainfall at isolated places over south Assam & Meghalaya, Nagaland, Manipur and Mizoram.

24 hour accumulated realised rainfall in association with the system ending at 0830 hours IST of date are given in Annexure-1.

The observed track of the system and the latest satellite imagery is given in Annexure-2.

This is last update in association with this system. However regular bulletins will continue from National Weather Forecasting Centre, New Delhi and concerned Regional Meteorological Centres and Meteorological Centres.

Kindly visit www.rsmcnewdelhi.imd.gov.in and www.mausam.imd.gov.in for regular updates.

Contact: Cyclone Warning Division, Office of the Director General of Meteorology,
India Meteorological Department, Ministry of Earth Sciences.

Phone: (91) 11-24652484, FAX: (91) 11-24643128, 24623220, E-mail: cwdhq2008@gmail.com, Website: rsmcnewdelhi.imd.gov.in

Spatial rainfall distribution: Isolated: <25%, A few: 26-50%, Many: 51-75%, Most: 76-100%

Rainfall amount (mm): Heavy rain: 64.5 – 115.5, Very heavy rain: 115.6 – 204.4, Extremely heavy rain: 204.5 or more.

Realised rainfall (in cm) during past 24 hours ending at 0830 hrs IST of date:

5th December 2021:

Odisha:

Ganjam district: Chhattarpur-9, Purushottampur-8, Behrampur, Digapahandi, Gopalpur-6 each; Khurda district: Banpur-8; Jagatsinghpur district: Paradip CWR-6, Balikuda-5; Nayagarh district: Nayagarh6; Puri district: Astaranga-5; Kendrapada district: Garadapur-5; Cuttack district: Kantapada-5; Jajpur district: Chandikhol-5

6th December 2021:

Odisha:

Jagatsinghpur district: Erasama-23, Paradip-20, Balikuda-15, Kujanga-14, Nuagaon-13, Tirtol-12, Raghunathpur-9, Jagatsinghpur-7; Kendrapara district: Marshaghai, Garadpur-13 each, Rajnagar-12, Mohakalpara-10, Derabis-9, Kendrapara, Patamundai-8 each; Puri district: Kakatpur12, Astaranga-11, Delang, Kanas-8 each, Nimapara-7; Cuttack district: Niali-10, Tangi-Choudwar-7.

Gangetic West Bengal:

Hooghly district: Tarakeshwar-18, Bagati-13, Harinkhola-8; Burdwan district: Burdwan -13, Manteswar-7; Nadia district: Kalyani -12; North 24 Parganas district: Barrackpur-12, Dum dum-10, Salt lake-9; West Midnapore district: Mohanpur, Kharagpur-11 each, Midnapore, Kalaikunda -9 each, Jhargram, Lalgah-7 each; Howrah district: Uluberia -9; Kolkata district: Alipore-7; South 24 Parganas district: Canning-7.

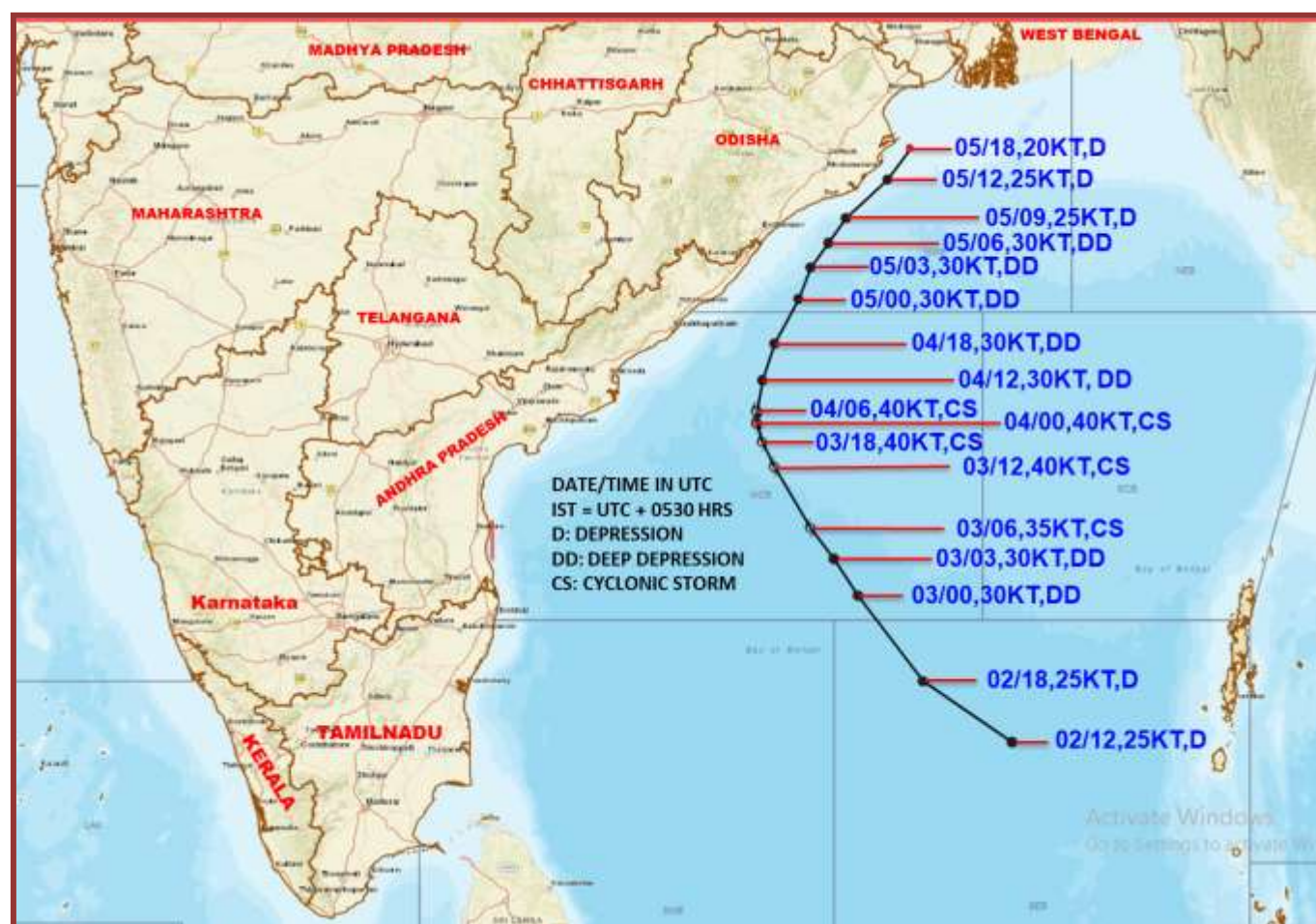


Fig.1: Observed track of cyclonic storm 'JAWAD' over Bay of Bengal during 2nd to 5th December, 2021

Contact: Cyclone Warning Division, Office of the Director General of Meteorology,
India Meteorological Department, Ministry of Earth Sciences.

Phone: (91) 11-24652484, FAX: (91) 11-24643128, 24623220, E-mail: cwdhq2008@gmail.com, Website: rsmcnewdelhi.imd.gov.in

Spatial rainfall distribution: Isolated: <25%, A few: 26-50%, Many: 51-75%, Most: 76-100%

Rainfall amount (mm): Heavy rain: 64.5 – 115.5, Very heavy rain: 115.6 – 204.4, Extremely heavy rain: 204.5 or more.

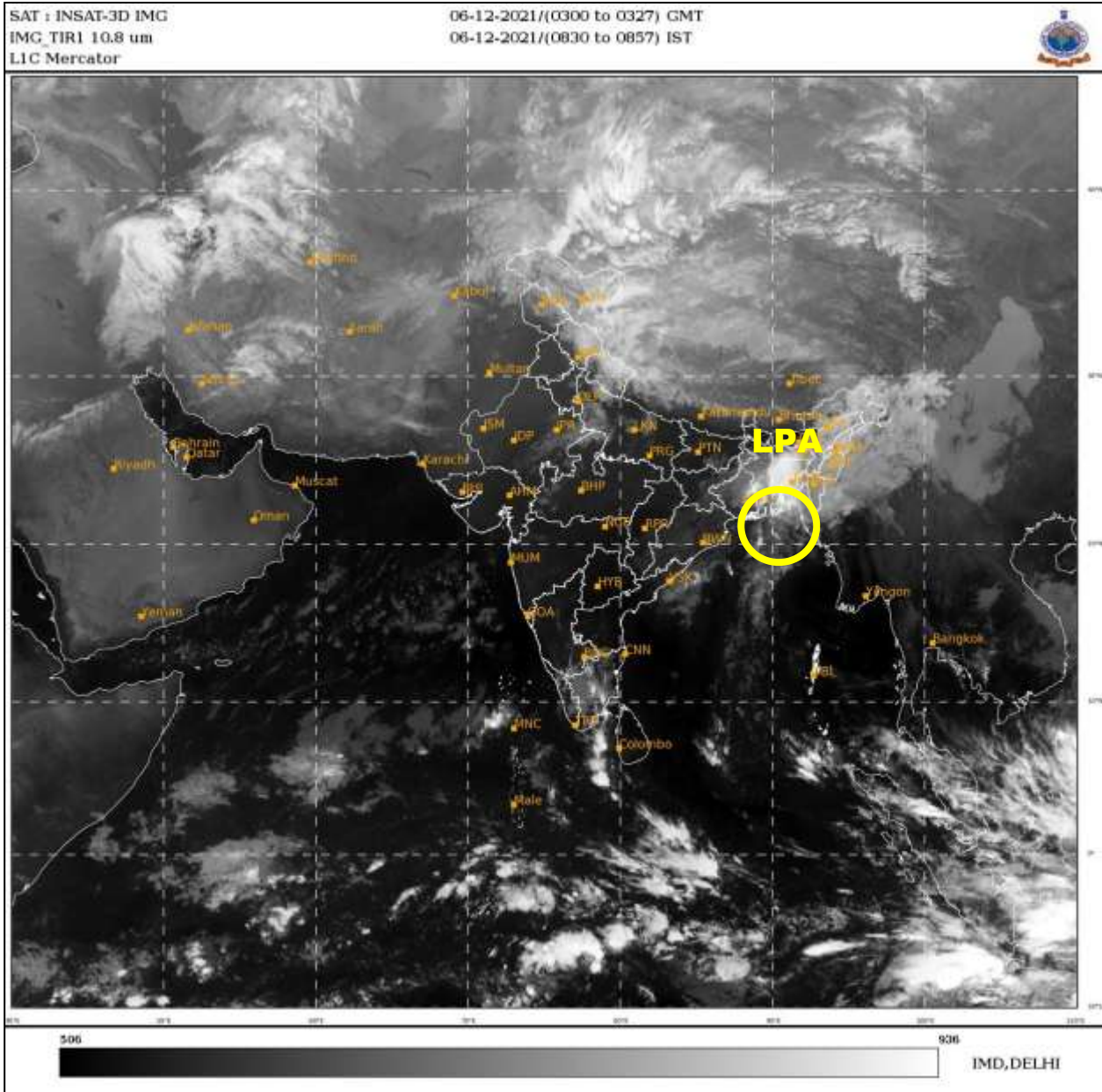


Fig.2: INSAT-3D imagery based on 0830 hours IST of 6th December

LPA: Low Pressure Area

Contact: Cyclone Warning Division, Office of the Director General of Meteorology,
 India Meteorological Department, Ministry of Earth Sciences.

Phone: (91) 11-24652484, FAX: (91) 11-24643128, 24623220, E-mail: cwdhq2008@gmail.com, Website: rsmcnewdelhi.imd.gov.in

Spatial rainfall distribution: Isolated: <25%, A few: 26-50%, Many: 51-75%, Most: 76-100%

Rainfall amount (mm): Heavy rain: 64.5 – 115.5, Very heavy rain: 115.6 – 204.4, Extremely heavy rain: 204.5 or more.