



Government of India
Ministry of Earth Sciences



India Meteorological Department

PRESS RELEASE – 2

Time of issue: 1300 hours IST

Dated: 24 October, 2022

Sub: Cyclonic Storm “SITRANG” (pronounced as “Si-Trang”) over Northwest and adjoining central Bay of Bengal (Cyclone Warning for West Bengal coast: Orange Message)

Yesterday’s depression over westcentral Bay of Bengal (BoB) & adjoining areas moved northwestwards and intensified into a deep depression over westcentral BoB in the same forenoon (1130 hours IST of 23rd October). Thereafter, it moved nearly northwards and intensified into the cyclonic storm “SITRANG” in the evening (1730 hours IST of 23rd October). It then gradually recurved north-northeastwards and lay centered at 0830 hours IST of today, the 24th October over northwest and adjoining central Bay of Bengal near latitude 18.3°N and longitude 88.9°E, about 380 km south of Sagar Island and 520 km south-southwest of Barisal (Bangladesh).

It is very likely to continue to move north-northeastwards and intensify marginally and cross Bangladesh coast between Tinkona Island and Sandwip close to Barisal by early hours of 25th October.

Forecast track and intensity are given below:

Date/Time(IST)	Position (Lat. °N/ long. °E)	Maximum sustained surface wind speed (Kmph)	Category of cyclonic disturbance
24.10.22/0830	18.3/88.9	75-85 gusting to 95	Cyclonic Storm
24.10.22/1130	19.1/89.2	80-90 gusting to 100	Cyclonic Storm
24.10.22/1730	20.1/89.6	90-100 gusting to 110	Severe Cyclonic Storm
24.10.22/2330	21.2/90.0	90-100 gusting to 110	Severe Cyclonic Storm
25.10.22/0530	22.3/90.6	80-90 gusting to 100	Cyclonic Storm
25.10.22/1730	23.8/91.5	45-55 gusting to 65	Depression
26.10.22/0530	25.6/92.7	25-35 gusting to 45	Low Pressure Area

Realized Rainfall:

Light to moderate rainfall has occurred at many places over coastal districts of north Odisha and West Bengal during past 24 hours ending at 0830 hours IST of today, the 24th October 2022.

Warnings:

(i) Rainfall (warning graphics enclosed)

Odisha: Light to moderate rainfall at many places is likely over north coastal Odisha on 24th with possibility of isolated heavy rainfall over Vadrak and Balasore districts.

West Bengal: Light to moderate rainfall at most places with isolated **heavy to very heavy rainfall** is likely over coastal districts of West Bengal (South & North Parganas, East Medinipur & adjoining areas of West Medinipur) on 24th October. Light to moderate rainfall at many with

Contact: Cyclone Warning Division, Office of the Director General of Meteorology,
India Meteorological Department, Ministry of Earth Sciences.

Phone: (91) 11-24652484, FAX: (91) 11-24643128, 24623220, E-mail: cwdhq2008@gmail.com, Website: rsmcnewdelhi.imd.gov.in

Spatial rainfall distribution: Isolated: <25%, A few: 26-50%, Many: 51-75%, Most: 76-100%

Rainfall amount (mm): Heavy rain: 64.5 – 115.5, Very heavy rain: 115.6 – 204.4, Extremely heavy rain: 204.5 or more.

isolated **heavy to very heavy rainfall** is likely over coastal districts (South & North Parganas and Nadia) of West Bengal on 25th October.

Northeastern States:

Light to moderate rainfall at most places with **heavy to very heavy rainfall** at isolated places is likely over North Assam, Arunachal Pradesh, Nagaland & Manipur; **heavy to Extremely heavy rainfall** likely over South Assam, Meghalaya, Mizoram, & Tripura on 24th October.

Light to moderate rainfall at most places with isolated **heavy to very heavy rainfall** is likely over Arunachal Pradesh, Assam, Meghalaya, Mizoram, & Tripura on 25th and isolated **heavy rainfall** is likely over Arunachal Pradesh, northeast Assam and Nagaland on 26th October.

(ii) Wind warning:

24th October: Gale wind speed reaching 75-85 kmph gusting to 95 kmph prevailing over westcentral & adjoining eastcentral Bay of Bengal and north Bay of Bengal. It would gradually increase becoming 80-90 kmph gusting to 100 kmph over north Bay of Bengal and central Bay of Bengal during next 6 hours. It would further increase gradually becoming 90-100 kmph gusting to 110 kmph over the same region from today, the 24th evening till 25th morning.

Squally wind speed reaching 40-50 kmph gusting to 60 kmph is prevailing along & off Odisha and West Bengal coasts. It would gradually increase becoming 60-80 kmph gusting to 90 kmph along and off West Bengal coast and 50-60 kmph gusting to 70 kmph along and off north Odisha coast from the evening hours of today. Squally wind speed reaching 40-50 kmph gusting to 60 kmph is likely over Mizoram & Tripura.

25th October: Gale wind speed reaching 80-90 kmph gusting to 100 kmph is likely over north Bay of Bengal and along & off Bangladesh coast; 70-90 kmph gusting to 100 kmph likely along & off 24 Parganas District and 60-70 kmph gusting to 80 kmph along & off east Medinipur district off West Bengal coast till morning. It would gradually decrease becoming 45-55 kmph gusting to 65 kmph over coastal areas of Bangladesh and adjoining West Bengal coasts after evening.

Squally wind speed reaching 40-50 gusting to 60 kmph is likely along and off Balasore district & 35-45 kmph gusting to 55 kmph along & off remaining north coastal districts of Odisha in the morning.

Squally wind speed reaching 50-60 kmph gusting to 70 kmph is likely over Tripura and 45-55 kmph gusting to 65 kmph is likely over Mizoram, south Assam and adjoining east Meghalaya & Manipur.

(iii) Sea condition

24th October: High Sea conditions are prevailing over westcentral & adjoining eastcentral Bay of Bengal and north Bay of Bengal; **Rough to very rough** Sea conditions are prevailing along & off Odisha-West Bengal-Bangladesh coasts. It would become **high to very high** from 24th evening along & off West Bengal-Bangladesh coasts.

25th October: **Very high to high** over north Bay of Bengal along & off Bangladesh-West Bengal coasts in the morning and improve gradually from noon.

(iv) Storm Surge Warning (warning graphics enclosed)

- Tidal wave of about 2.0 m height above astronomical tide is likely to inundate low lying areas of Bangladesh coast near the landfall area around the time of landfall.

Contact: Cyclone Warning Division, Office of the Director General of Meteorology,
India Meteorological Department, Ministry of Earth Sciences.

Phone: (91) 11-24652484, FAX: (91) 11-24643128, 24623220, E-mail: cwdhq2008@gmail.com, Website: rsmcnewdelhi.imd.gov.in

Spatial rainfall distribution: Isolated: <25%, A few: 26-50%, Many: 51-75%, Most: 76-100%

Rainfall amount (mm): Heavy rain: 64.5 – 115.5, Very heavy rain: 115.6 – 204.4, Extremely heavy rain: 204.5 or more.

- Tidal wave of about 1.0 m height above astronomical tide is likely to inundate low lying areas of West Bengal (North & South 24 Parganas) around the time of landfall.

(v) Fishermen Warning (warning graphics enclosed)

- Fishermen are advised not to venture into central Bay of Bengal on 24th, north & adjoining central Bay of Bengal on 24th and 25th October, 2022.
- Fishermen are advised not to venture into Sea along and off Odisha, West Bengal & Bangladesh coasts during 24th to 25th October. Fishermen out at sea are advised to return to the coast.

(vi) Damage expected over coastal districts of West Bengal (South and North 24 Parganas and East Mednipur)

- Damage to thatched huts.
- Damage to power and communication lines due to breaking of branches.
- Major damage to Kutcha and minor damage to Pucca roads.
- Damage to paddy crops, banana, papaya trees and orchards.
- Sea water inundation in low lying areas after erosion of Kutcha embankments

(vii) Damage expected over Tripura, Mizoram, East Meghalaya, Manipur and South Assam

- Damage to standing crops including agricultural and horticultural crops due to heavy rain and squally winds
- Breaking of tree branches and uprooting of small trees like drumsticks, banana and papaya trees
- Inundation/localized flooding in low lying areas due to heavy rains
- Localised landslides/ mudslides/ mud slips/ mud sink possibility due to heavy rain
- Traffic may be disrupted due to poor visibility in association with heavy rain
- Vulnerable structures like hoardings, tents and display boards may be damaged

(viii) Action suggested for West Bengal

- Total suspension of fishing operations.
- People to remain in safe places.

(ix) Action suggested for Tripura, Mizoram, East Meghalaya, Manipur and South Assam

- People are advised to be cautious while going outside
- Regulate traffic
- People should not move nearby to vulnerable structures

(viii) Advisory for On-shore and Off-shore Installations

Regulation of off-shore activities from 24th over central and North Bay of Bengal till 25th. Suspension of off-shore activities during 24th to 25th October along and off Odisha and West Bengal coasts.

The system is under continuous surveillance and the concerned state governments are being informed regularly.

Next message will be issued at 1300 hours IST of tomorrow, the 25th October, 2022.

Kindly visit www.rsmcnewdelhi.imd.gov.in and www.mausam.imd.gov.in for updates on the system.

Contact: Cyclone Warning Division, Office of the Director General of Meteorology,
India Meteorological Department, Ministry of Earth Sciences.

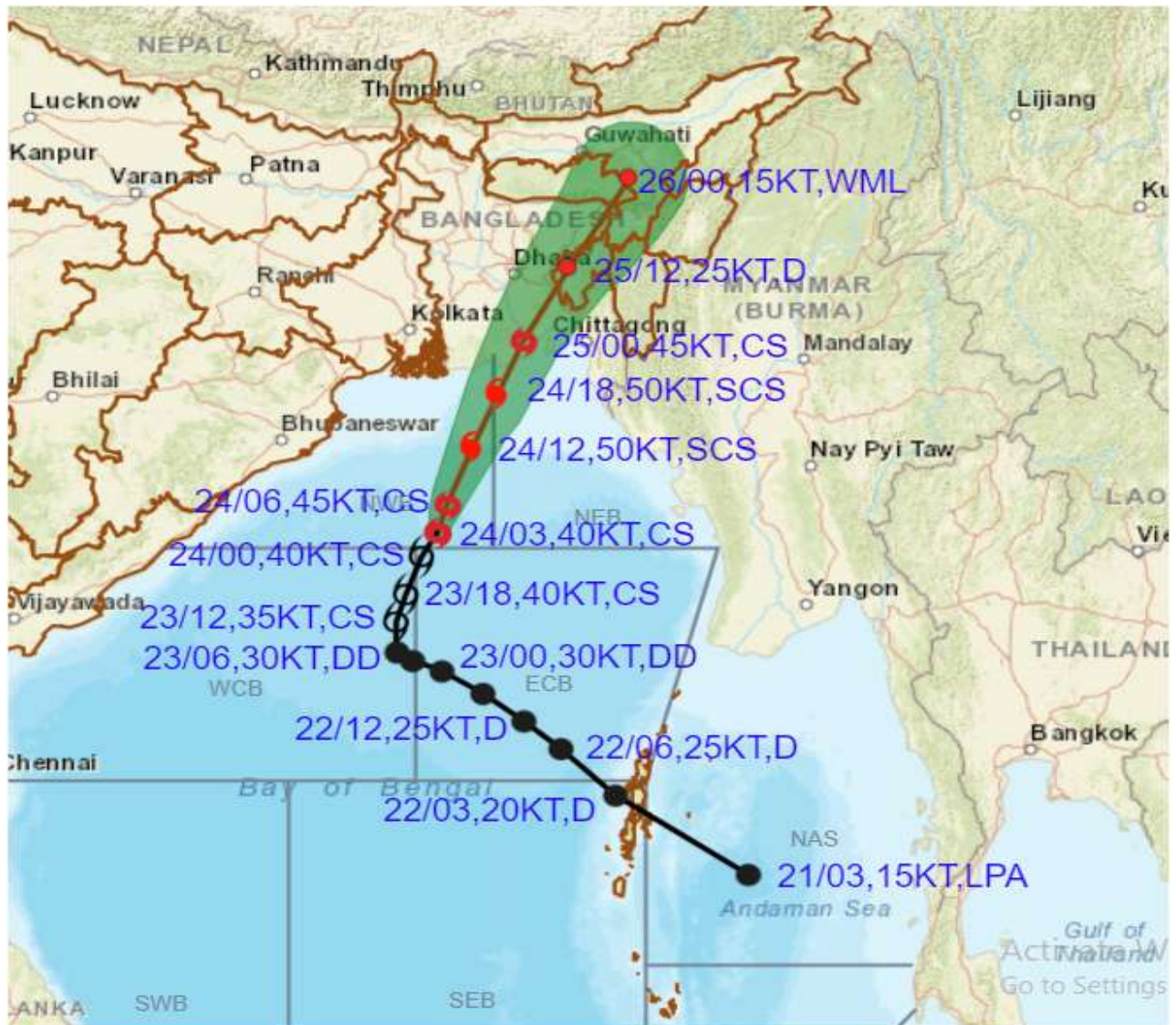
Phone: (91) 11-24652484, FAX: (91) 11-24643128, 24623220, E-mail: cwdhq2008@gmail.com, Website: rsmcnewdelhi.imd.gov.in

Spatial rainfall distribution: Isolated: <25%, A few: 26-50%, Many: 51-75%, Most: 76-100%

Rainfall amount (mm): Heavy rain: 64.5 – 115.5, Very heavy rain: 115.6 – 204.4, Extremely heavy rain: 204.5 or more.



OBSERVED AND FORECAST TRACK ALONGWITH CONE OF UNCERTAINTY OF CYCLONIC STORM SITRANG OVER NORTHWEST AND ADJOINING CENTRAL BAY OF BENGAL BASED ON 0300 UTC OF 24th OCTOBER, 2022



DATE/TIME IN UTC

IST=UTC + 0530

L: LOW PRESSURE AREA

WML: WELL MARKED LOW PRESSURE AREA

D: DEPRESSION (17-27 KT)

DD: DEEP DEPRESSION (28-33 KT)

CS: CYCLONIC STORM (34-47 KT)

SCS: SEVERE CYCLONIC STORM (48-63KT)

VSCS: VERY SEVERE CYCLONIC STORM (64-89 KT)

ESCS: EXTREMELY SEVERE CYCLONIC STORM (90-119 KT)

SuCS: SUPER CYCLONIC STORM \geq 120 KT)

● LESS THAN 34 KT

○ 34-47 KT

○ \geq 48 KT

— OBSERVED TRACK

— FORECAST TRACK

▲ CONE OF UNCERTAINTY

Contact: Cyclone Warning Division, Office of the Director General of Meteorology,
India Meteorological Department, Ministry of Earth Sciences.

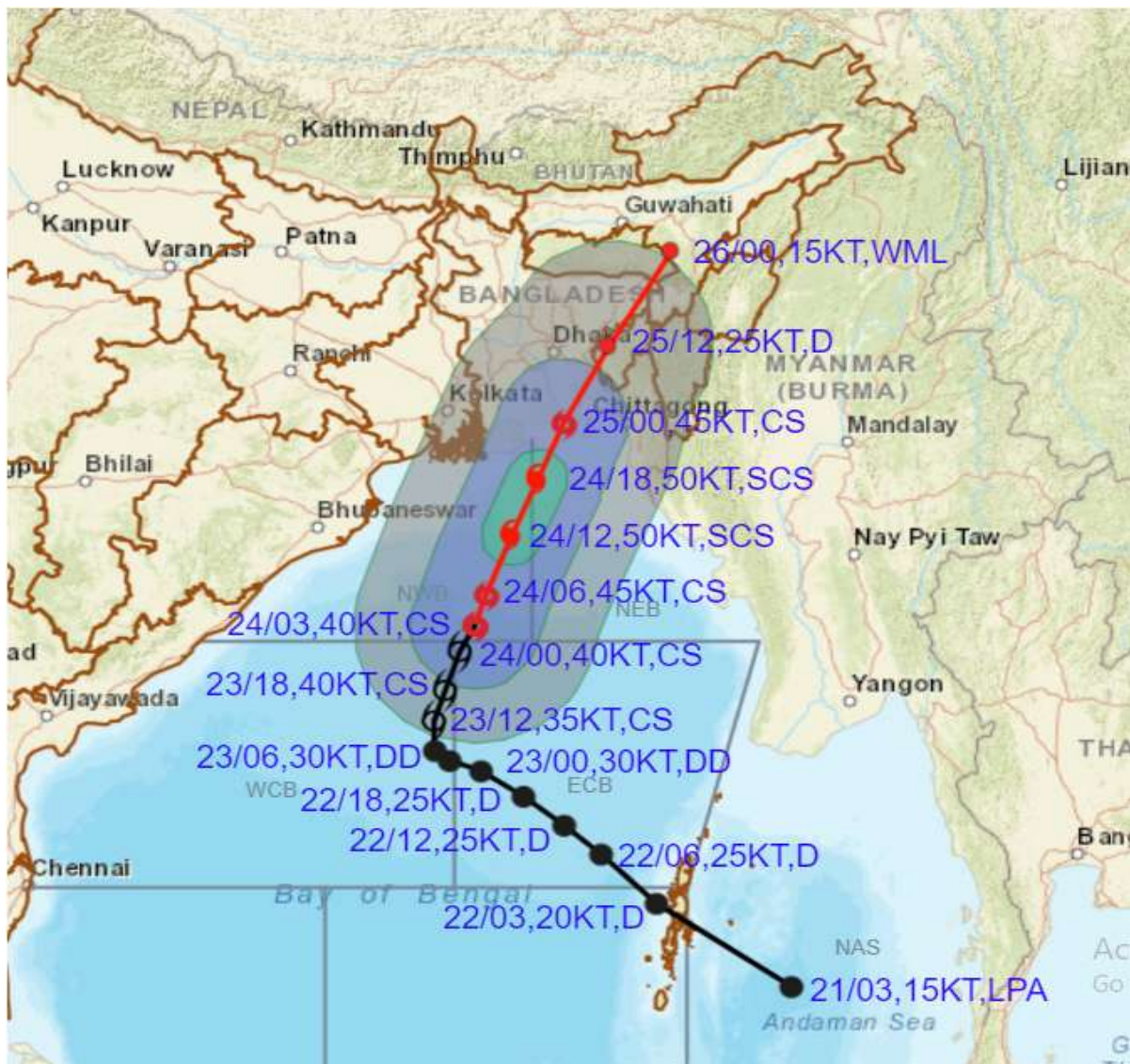
Phone: (91) 11-24652484, FAX: (91) 11-24643128, 24623220, E-mail: cwdhq2008@gmail.com, Website: rsmcnewdelhi.imd.gov.in

Spatial rainfall distribution: Isolated: <25%, A few: 26-50%, Many: 51-75%, Most: 76-100%

Rainfall amount (mm): Heavy rain: 64.5 – 115.5, Very heavy rain: 115.6 – 204.4, Extremely heavy rain: 204.5 or more.



OBSERVED AND FORECAST TRACK ALONGWITH QUADRANT WIND DISTRIBUTION OF CYCLONIC STORM SITRANG OVER NORTHWEST AND ADJOINING CENTRAL BAY OF BENGAL BASED ON 0300 UTC OF 24th OCTOBER, 2022



DATE/TIME IN UTC

IST=UTC + 0530

L: LOW PRESSURE AREA

WML: WELL MARKED LOW PRESSURE AREA

D: DEPRESSION (17-27 KT)

DD: DEEP DEPRESSION (28-33 KT)

CS: CYCLONIC STORM (34-47 KT)

SCS: SEVERE CYCLONIC STORM (48-63KT)

VSCS: VERY SEVERE CYCLONIC STORM (64-89 KT)

ESCS: EXTREMELY SEVERE CYCLONIC STORM (90-119 KT)

SuCS: SUPER CYCLONIC STORM (≥20 KT)

● LESS THAN 34 KT

○ 34-47 KT

● ≥ 48 KT

— OBSERVED TRACK

— FORECAST TRACK

▲ CONE OF UNCERTAINTY

AREA OF MAXIMUM SUSTAINED WIND SPEED:

■ 28-33 KT (52-61 KMPH)

■ 34-49 KT (62-91 KMPH)

■ 50-63 KT (92-117 KMPH)

■ ≥ 64 KT (≥118 KMPH)

IMPACT OVER THE SEA

MSW (knot/kmph)	Impact	Action
28-33 (52-61)	Very rough seas	Total suspension of fishing operations
34-49 (62-91)	High to very high seas	Total suspension of fishing operations
50-63 (92-117)	Very high seas	Total suspension of fishing operations
≥ 64 (≥118)	Phenomenal	Total suspension of fishing operations

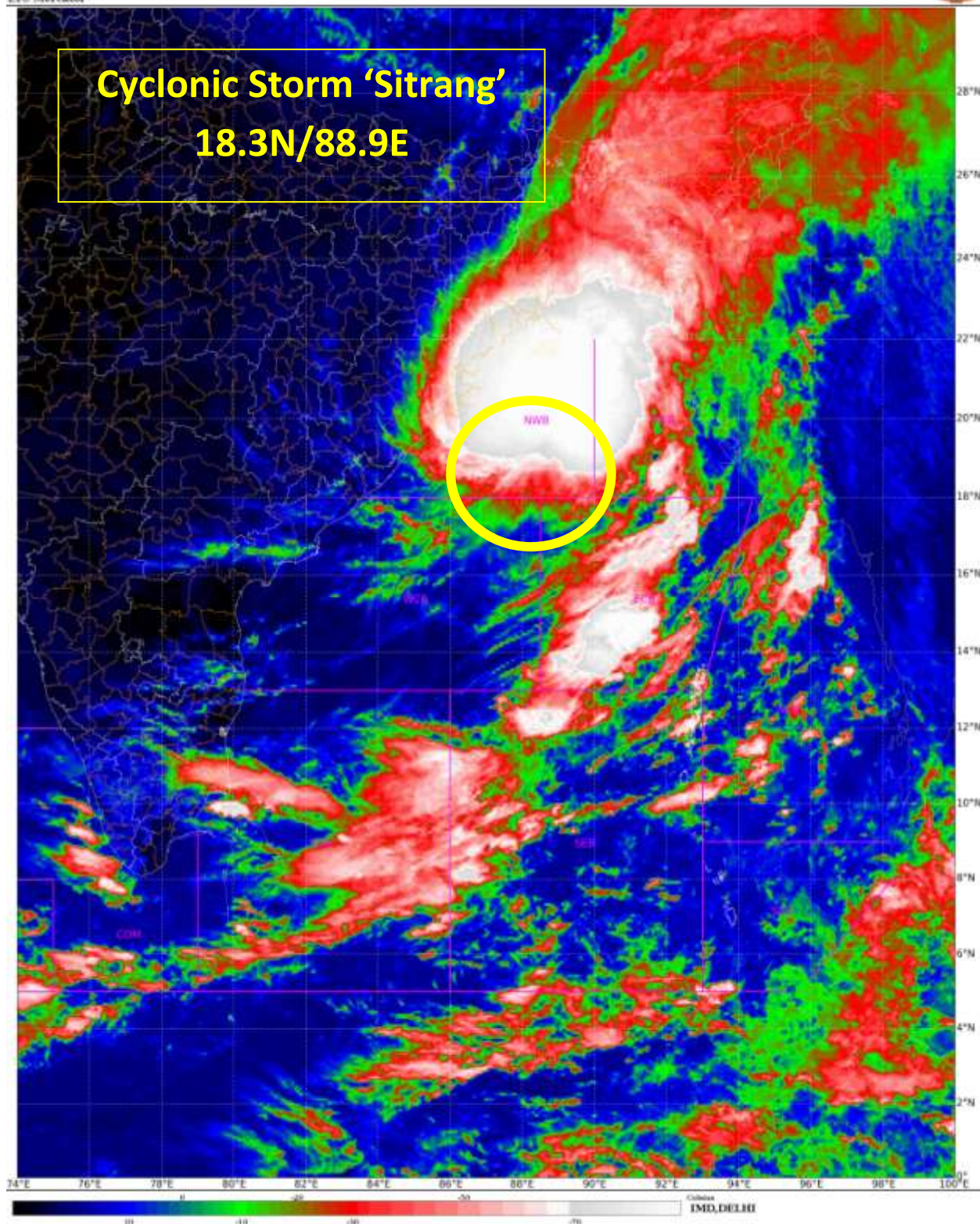
Contact: Cyclone Warning Division, Office of the Director General of Meteorology,

India Meteorological Department, Ministry of Earth Sciences.

Phone: (91) 11-24652484, FAX: (91) 11-24643128, 24623220, E-mail: cwdhq2008@gmail.com, Website: rsmcnewdelhi.imd.gov.in

Spatial rainfall distribution: Isolated: <25%, A few: 26-50%, Many: 51-75%, Most: 76-100%

Rainfall amount (mm): Heavy rain: 64.5 – 115.5, Very heavy rain: 115.6 – 204.4, Extremely heavy rain: 204.5 or more.

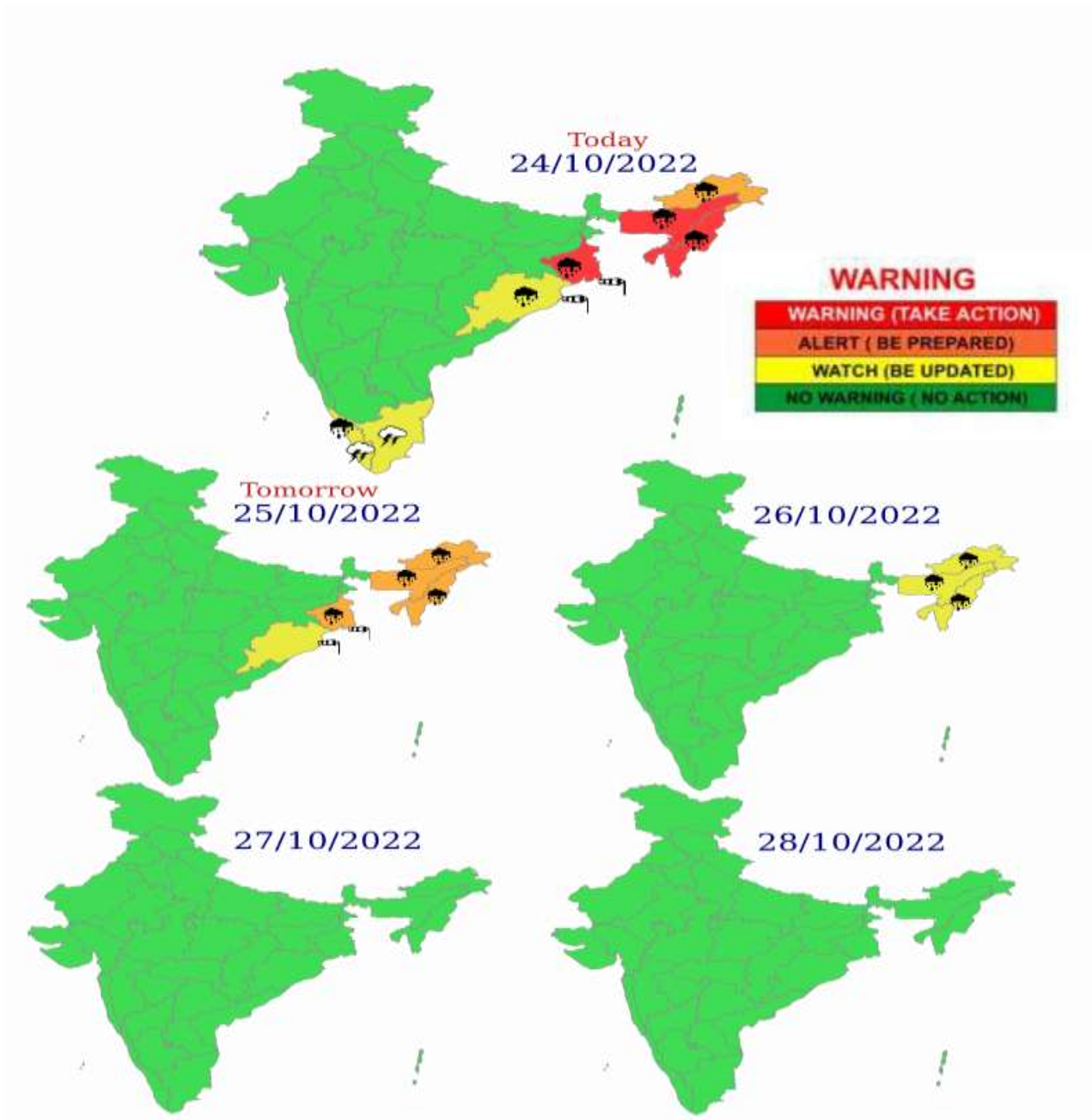


Contact: Cyclone Warning Division, Office of the Director General of Meteorology,
India Meteorological Department, Ministry of Earth Sciences.

Phone: (91) 11-24652484, FAX: (91) 11-24643128, 24623220, E-mail: cwdhq2008@gmail.com, Website: rsmcnewdelhi.imd.gov.in

Spatial rainfall distribution: Isolated: <25%, A few: 26-50%, Many: 51-75%, Most: 76-100%

Rainfall amount (mm): Heavy rain: 64.5 – 115.5, Very heavy rain: 115.6 – 204.4, Extremely heavy rain: 204.5 or more.



	Heavy Rain		Heavy Snow		Thunderstorm		Dust Storm
	Strong Winds		Visibility		Cyclone		Squall/ Hail
	Frost		Cold Wave		Heat Wave		Sea State

Contact: Cyclone Warning Division, Office of the Director General of Meteorology,
India Meteorological Department, Ministry of Earth Sciences.

Phone: (91) 11-24652484, FAX: (91) 11-24643128, 24623220, E-mail: cwdhq2008@gmail.com, Website: rsmcnewdelhi.imd.gov.in

Spatial rainfall distribution: Isolated: <25%, A few: 26-50%, Many: 51-75%, Most: 76-100%

Rainfall amount (mm): Heavy rain: 64.5 – 115.5, Very heavy rain: 115.6 – 204.4, Extremely heavy rain: 204.5 or more.

Fishermen warning graphics



	Squally WX with wind speed 40-45 kmph gusting to 55 kmph
	Squally WX with wind speed 45-55 kmph gusting to 65 kmph
	Squally wind speed with wind speed 45-55 kmph gusting to 65 kmph
	Squally wind speed with wind speed 55-65 kmph gusting to 75 kmph
	Gale wind speed with wind speed 65-75 kmph gusting to 85 kmph
	Gale wind speed with wind speed 80-90 kmph gusting to 100 kmph
	Gale wind speed with wind speed 90-100 kmph gusting to 110 kmph

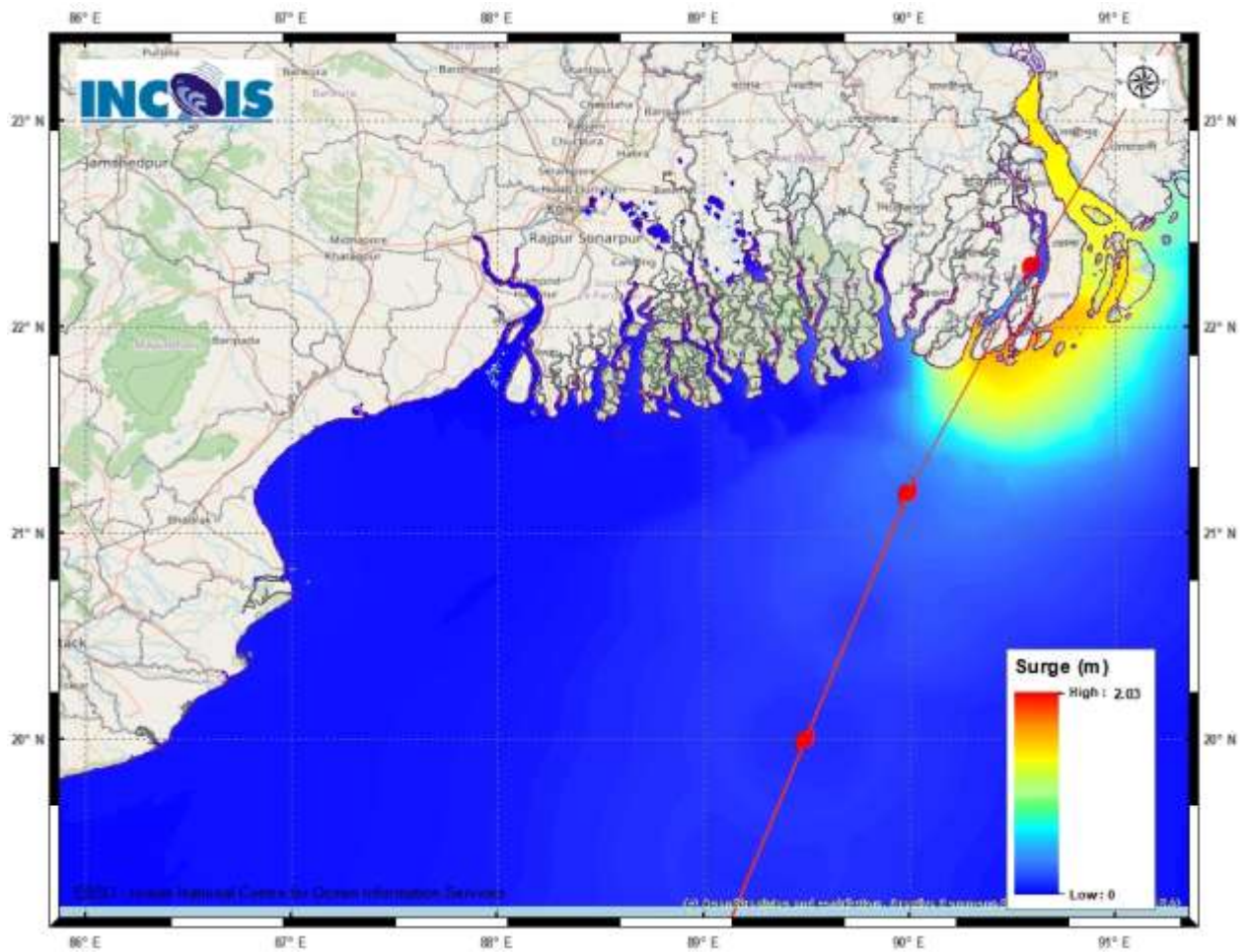
Fishermen are advised not to venture into the marked areas.

Contact: Cyclone Warning Division, Office of the Director General of Meteorology,
India Meteorological Department, Ministry of Earth Sciences.

Phone: (91) 11-24652484, FAX: (91) 11-24643128, 24623220, E-mail: cwdhq2008@gmail.com, Website: rsmcnewdelhi.imd.gov.in

Spatial rainfall distribution: Isolated: <25%, A few: 26-50%, Many: 51-75%, Most: 76-100%

Rainfall amount (mm): Heavy rain: 64.5 – 115.5, Very heavy rain: 115.6 – 204.4, Extremely heavy rain: 204.5 or more.



Storm Surge Warning Graphics

Contact: Cyclone Warning Division, Office of the Director General of Meteorology,
India Meteorological Department, Ministry of Earth Sciences.

Phone: (91) 11-24652484, FAX: (91) 11-24643128, 24623220, E-mail: cwdhq2008@gmail.com, Website: rsmcnewdelhi.imd.gov.in

Spatial rainfall distribution: Isolated: <25%, A few: 26-50%, Many: 51-75%, Most: 76-100%

Rainfall amount (mm): Heavy rain: 64.5 – 115.5, Very heavy rain: 115.6 – 204.4, Extremely heavy rain: 204.5 or more.