



Government of India  
Ministry of Earth Sciences



India Meteorological Department

## PRESS RELEASE – 2

Time of issue: 1245 hours IST

Dated: 21 November, 2022

Sub: Depression over southwest Bay of Bengal

Yesterday's depression over southwest and adjoining southeast Bay of Bengal (BoB) moved nearly northwestwards and lay centred at 0830 hours IST of today, the 21<sup>st</sup> November, 2022 over the southwest BoB near latitude 12.1° N and longitude 84.0° E, about 520 km northeast of Jaffna (Sri Lanka), 470 km east-northeast of Karaikal, 550 km southeast of Machilipatnam and 420 km east-southeast of Chennai.

It is likely to move northwestwards till 21<sup>st</sup> November evening and then west-northwestwards maintaining the intensity of depression till mid-night. Thereafter, it would continue to move west-northwestwards towards south Andhra Pradesh-North Tamilnadu-Puducherry coasts and weaken gradually into a well-marked low pressure area around 22<sup>nd</sup> morning.

### Warnings:

#### (i) Rainfall (warning graphics enclosed)

- ❖ Light to moderate rainfall at many places with isolated heavy rainfall is very likely over North Tamilnadu-Puducherry and south coastal Andhra Pradesh & adjoining Rayalaseema on 21<sup>st</sup> and 22<sup>nd</sup> November and light to moderate rainfall at a few places over North coastal Andhra Pradesh during the same period.
- ❖ Light to moderate rainfall at many places is likely over North Tamil Nadu-Puducherry, South Coastal Andhra Pradesh and Rayalseema on 23<sup>rd</sup> November.

#### (ii) Wind warning:

- ❖ **Squally wind speed reaching 45-55 kmph gusting to 65 kmph is likely to prevail over Southwest and adjoining Westcentral Bay of Bengal and along & off Andhra Pradesh, Tamil Nadu, Puducherry and Sri Lanka coasts till 22<sup>nd</sup> November morning and decrease gradually thereafter.**
- ❖ **Squally weather with wind speed reaching 40-45 kmph gusting to 55 kmph is likely to prevail over Gulf of Mannar on 21<sup>st</sup> & 22<sup>nd</sup> November.**

#### (iii) Sea condition

- ❖ **Sea condition will be rough to very rough over Southwest and adjoining Westcentral Bay of Bengal and along & off Andhra Pradesh, Tamil Nadu, Puducherry, Sri Lanka coasts till 22<sup>nd</sup> November morning and improve gradually thereafter.**
- ❖ **Sea condition will be rough over Gulf of Mannar on 21<sup>st</sup> & 22<sup>nd</sup> November and improve gradually thereafter.**

Contact: Cyclone Warning Division, Office of the Director General of Meteorology,  
India Meteorological Department, Ministry of Earth Sciences.

Phone: (91) 11-24652484, FAX: (91) 11-24643128, 24623220, E-mail: [cwdhq2008@gmail.com](mailto:cwdhq2008@gmail.com), Website: [rsmcnewdelhi.imd.gov.in](http://rsmcnewdelhi.imd.gov.in)

Spatial rainfall distribution: Isolated: <25%, A few: 26-50%, Many: 51-75%, Most: 76-100%

Rainfall amount (mm): Heavy rain: 64.5 – 115.5, Very heavy rain: 115.6 – 204.4, Extremely heavy rain: 204.5 or more.

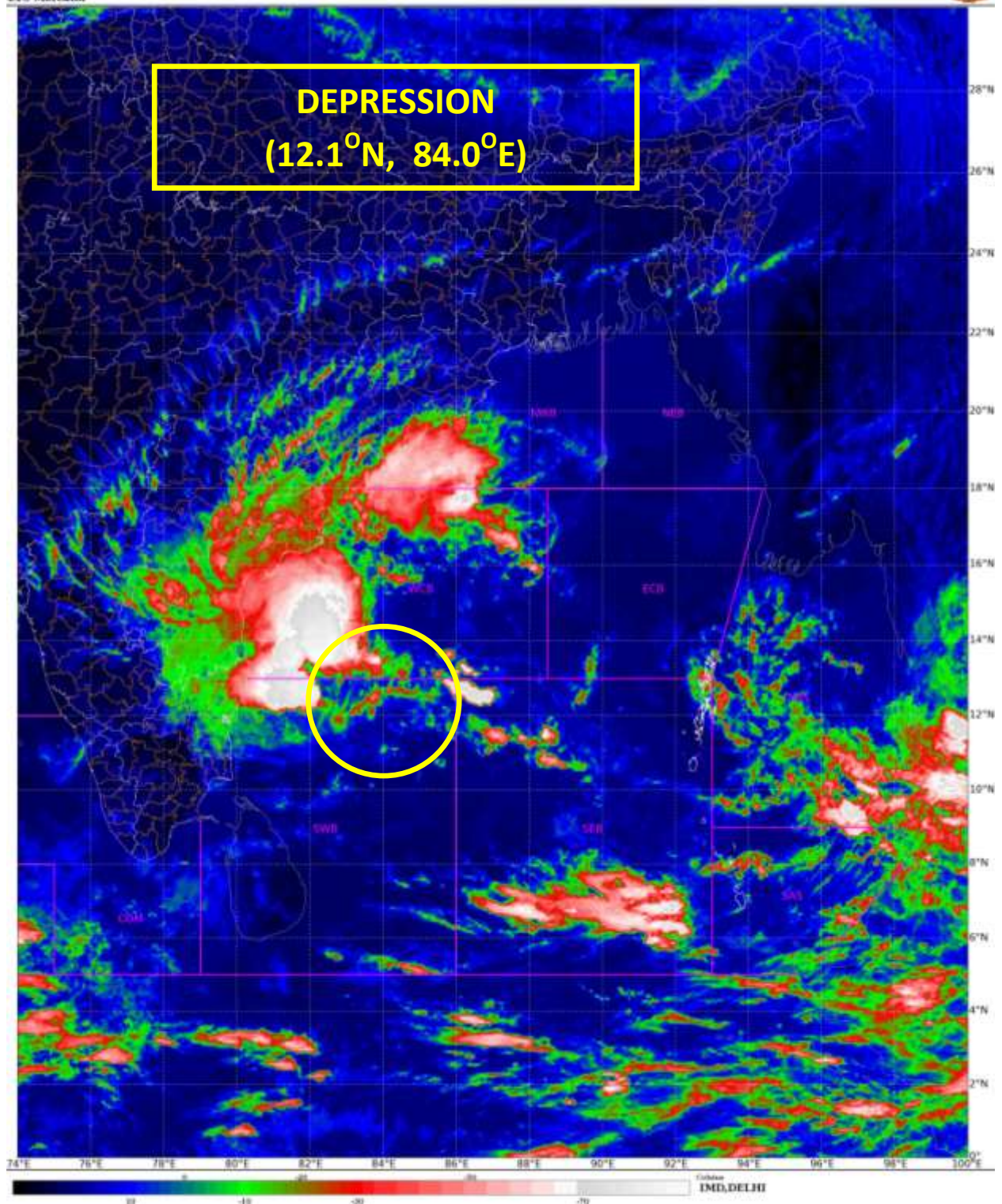
**(iv) Fishermen Warning**

Fishermen are advised not to venture into Southwest and adjoining Westcentral Bay of Bengal, Gulf of Mannar and along & off Andhra Pradesh, Tamil Nadu, Puducherry, Sri Lanka coasts till 22<sup>nd</sup> November

The system is under continuous surveillance and concerned state governments are being informed regularly. For updates kindly visit [www.rsmcnewdelhi.imd.gov.in](http://www.rsmcnewdelhi.imd.gov.in) and [www.mausam.imd.gov.in](http://www.mausam.imd.gov.in)

SAT : INSAT-3D IMG  
IMG\_TIR1\_TEMP 10.8 um  
LIC Mercator

21-11-2022/(0500 to 0527) GMT  
21-11-2022/(1030 to 1057) IST



Contact: Cyclone Warning Division, Office of the Director General of Meteorology,  
India Meteorological Department, Ministry of Earth Sciences.

Phone: (91) 11-24652484, FAX: (91) 11-24643128, 24623220, E-mail: [cwdhq2008@gmail.com](mailto:cwdhq2008@gmail.com), Website: [rsmcnewdelhi.imd.gov.in](http://rsmcnewdelhi.imd.gov.in)

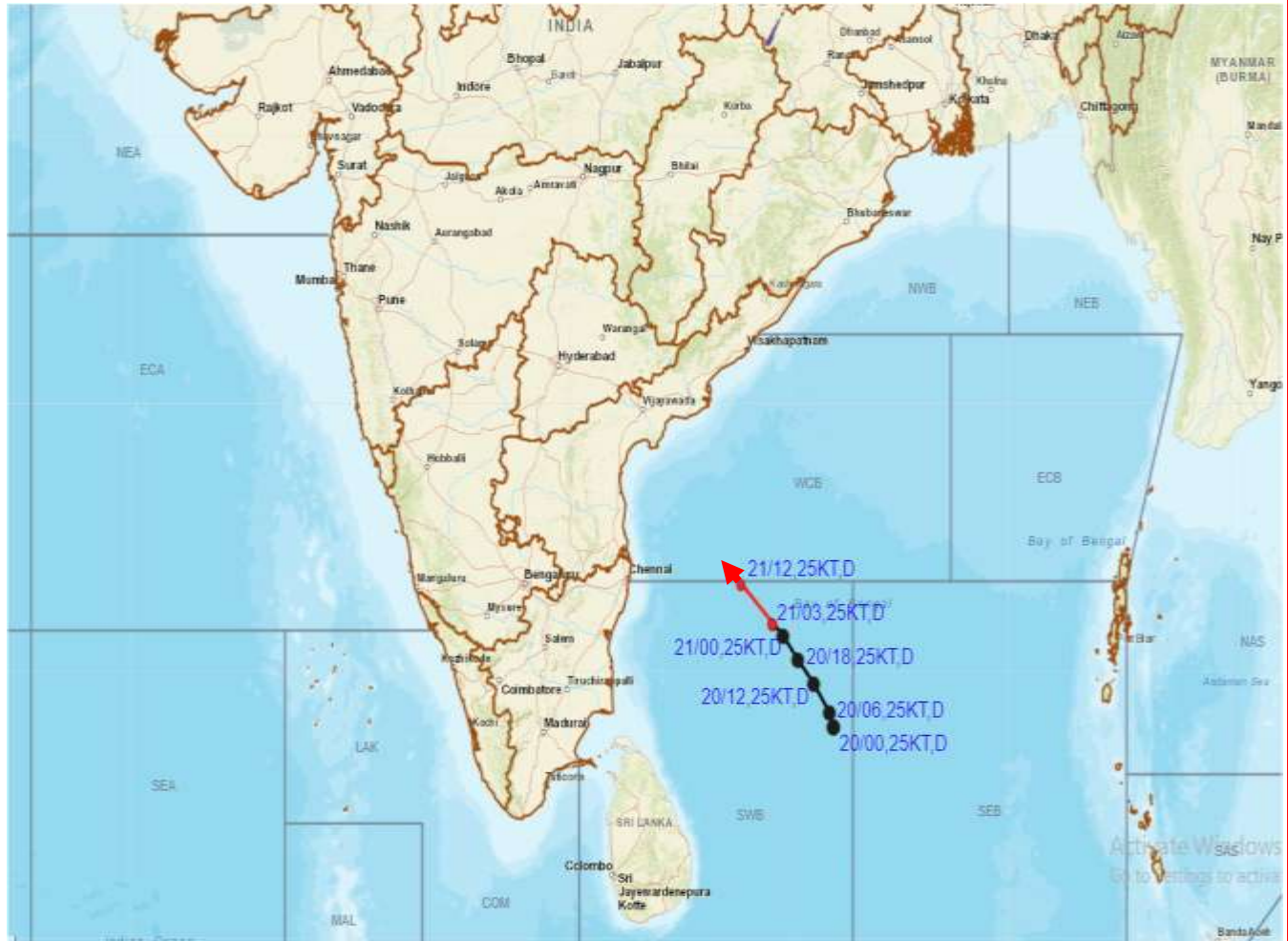
Spatial rainfall distribution: Isolated: <25%, A few: 26-50%, Many: 51-75%, Most: 76-100%

Rainfall amount (mm): Heavy rain: 64.5 – 115.5, Very heavy rain: 115.6 – 204.4, Extremely heavy rain: 204.5 or more.





## OBSERVED AND FORECAST TRACK OF DEPRESSION OVER SOUTHWEST BAY OF BENGAL BASED ON 0300 UTC OF 21ST NOVEMBER, 2022



### DATE/TIME IN UTC

IST=UTC + 0530

L: LOW PRESSURE AREA

WML: WELL MARKED LOW PRESSURE AREA

D: DEPRESSION (17-27 KT)

DD: DEEP DEPRESSION (28-33 KT)

CS: CYCLONIC STORM (34-47 KT)

SCS: SEVERE CYCLONIC STORM (48-63KT)

VSCS: VERY SEVERE CYCLONIC STORM (64-89 KT)

ESCS: EXTREMELY SEVERE CYCLONIC STORM (90-119 KT)

SuCS: SUPER CYCLONIC STORM ( $\geq 20$  KT)



LESS THAN 34 KT



34-47 KT



$\geq 48$  KT



OBSERVED TRACK



FORECAST TRACK



CONE OF UNCERTAINTY

Contact: Cyclone Warning Division, Office of the Director General of Meteorology,  
India Meteorological Department, Ministry of Earth Sciences.

Phone: (91) 11-24652484, FAX: (91) 11-24643128, 24623220, E-mail: [cwdhq2008@gmail.com](mailto:cwdhq2008@gmail.com), Website: [rsmcnewdelhi.imd.gov.in](http://rsmcnewdelhi.imd.gov.in)

Spatial rainfall distribution: Isolated: <25%, A few: 26-50%, Many: 51-75%, Most: 76-100%

Rainfall amount (mm): Heavy rain: 64.5 – 115.5, Very heavy rain: 115.6 – 204.4, Extremely heavy rain: 204.5 or more.

## Fishermen warning graphics



	Squally weather with wind speed 40-45 kmph gusting to 55 kmph
	Squally wind speed with wind speed 45-55 kmph gusting to 65 kmph

Fishermen are advised not to venture into the marked areas.



## WARNING

WARNING (TAKE ACTION)
ALERT ( BE PREPARED)
WATCH (BE UPDATED)
NO WARNING ( NO ACTION)

Today  
21/11/2022



Tomorrow  
22/11/2022



23/11/2022



24/11/2022



25/11/2022



Heavy Rain



Strong Winds



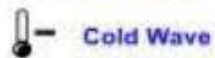
Frost



Heavy Snow



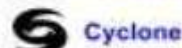
Visibility



Cold Wave



Thunderstorm



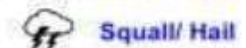
Cyclone



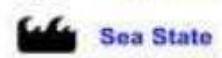
Heat Wave



Dust Storm



Squall/ Hail



Sea State

Contact: Cyclone Warning Division, Office of the Director General of Meteorology,  
India Meteorological Department, Ministry of Earth Sciences.

Phone: (91) 11-24652484, FAX: (91) 11-24643128, 24623220, E-mail: [cwdhq2008@gmail.com](mailto:cwdhq2008@gmail.com), Website: [rsmcnewdelhi.imd.gov.in](http://rsmcnewdelhi.imd.gov.in)

Spatial rainfall distribution: Isolated: <25%, A few: 26-50%, Many: 51-75%, Most: 76-100%

Rainfall amount (mm): Heavy rain: 64.5 – 115.5, Very heavy rain: 115.6 – 204.4, Extremely heavy rain: 204.5 or more.