



Government of India
Ministry of Earth Sciences



India Meteorological Department

PRESS RELEASE – 1

Time of issue: 1330 hours IST

Dated: 6 December, 2022

Sub: Well marked low pressure area Southeast Bay of Bengal

A cyclonic circulation lay over south Andaman Sea and adjoining equatorial Indian Ocean-strait of Malacca in the morning (0530 hours IST) of 4th December. Under its influence, a low pressure area was formed over south Andaman Sea & neighbourhood in the morning (0530 hours IST) of 5th December, 2022. It became a Well marked low pressure area over Southeast Bay of Bengal in the morning (0530 hours IST) of 06th December 2022 and persisted over the same area at 1130 hours IST of today morning, 06th December 2022. It is likely to move west-northwestwards and concentrate into a Depression over Southeast Bay of Bengal by today evening. Thereafter, it is likely to continue to move west-northwestwards, intensify further gradually into a Cyclonic Storm around 7th December evening and reach Southwest Bay of Bengal off north Tamil Nadu-Puducherry & adjoining south Andhra Pradesh coasts by 08th December morning. It will continue to move west-northwestwards towards north Tamil Nadu-Puducherry & adjoining south Andhra Pradesh coasts during subsequent 48 hours.

Date/Time(IST)	Position (Lat. °N/ long. °E)	Maximum sustained surface wind speed (Kmph)	Category of cyclonic disturbance
06.12.22/0830	8.0/89.8	25-35 gusting to 45	Well marked Low Pressure Area
06.12.22/1730	8.5/88.3	40-50 gusting to 60	Depression
07.12.22/0530	8.9/86.5	50-60 gusting to 70	Deep Depression
07.12.22/1730	9.4/85.2	60-70 gusting to 80	Cyclonic Storm
08.12.22/0530	10.1/84.0	70-80 gusting to 90	Cyclonic Storm
08.12.22/1730	10.8/82.8	80-90 gusting to 100	Cyclonic Storm
09.12.22/0530	11.5/81.6	80-90 gusting to 100	Cyclonic Storm
09.12.22/1730	12.3/80.5	70-80 gusting to 90	Cyclonic Storm
10.12.22/0530	13.0/79.8	65-75 gusting to 85	Cyclonic Storm

Warnings:

(i) Rainfall (warning graphics enclosed)

- ❖ Light/moderate rainfall at most places with isolated heavy falls very likely over Andaman & Nicobar Islands on 06th December, 2022.
- ❖ Light to moderate rainfall at most places with heavy to very heavy falls at isolated places very likely over coastal Tamilnadu, Puducherry & Karaikal and adjoining areas off south coastal Andhra Pradesh on 8th December.
- ❖ Light to moderate rainfall at most places with heavy to very heavy rainfall at a few places and extremely heavy rainfall at isolated places very likely over north coastal Tamilnadu, Puducherry and adjoining south Coastal Andhra Pradesh and isolated heavy to very heavy rainfall likely over north interior Tamilnadu and adjoining Rayalaseema on 9th December.
- ❖ It is likely to reduce at many places with heavy to very heavy rainfall at isolated places likely over north Tamilnadu and Rayalaseema and south Andhra Pradesh on 10th December.

Contact: Cyclone Warning Division, Office of the Director General of Meteorology,
India Meteorological Department, Ministry of Earth Sciences.

Phone: (91) 11-24652484, FAX: (91) 11-24643128, 24623220, E-mail: cwdhq2008@gmail.com, Website: rsmcnewdelhi.imd.gov.in

Spatial rainfall distribution: Isolated: <25%, A few: 26-50%, Many: 51-75%, Most: 76-100%

Rainfall amount (mm): Heavy rain: 64.5 – 115.5, Very heavy rain: 115.6 – 204.4, Extremely heavy rain: 204.5 or more.

(ii) Wind warning:

- ❖ **Squally weather with wind speed reaching 40-45 kmph gusting to 55 kmph** very likely over Andaman & Nicobar Islands and Andaman Sea on 06th December.
- ❖ **Squally wind speed reaching 45-55 kmph gusting to 65 kmph** likely over Southeast Bay of Bengal on 06th and it would increase gradually becoming **50-60 kmph gusting to 70 kmph** on 7th December and then reduce to **40-45 kmph gusting to 55 kmph on 8th Dec.**
- ❖ **Squally wind speed reaching 40-50 kmph gusting to 60 kmph** likely to prevail over Southwest Bay of Bengal on 6th. It would increase gradually becoming **50-60 kmph gusting to 70 kmph** from 7th morning and Gale wind speed reaching **70-80 kmph gusting to 90 kmph** likely over the same region on 08th and 09th. It would decrease thereafter gradually.
- ❖ **Squally wind speed reaching 40-50 kmph gusting to 60 kmph** likely to commence along & off Tamilnadu, Puducherry, south Andhra Pradesh and north Sri Lanka coasts from 08th December morning becoming **50-60 kmph gusting to 70 kmph** from 08th December evening, **70-80 kmph gusting to 90 kmph** from 09th December evening to 10th December morning. It is likely to reduce gradually to **50-60 kmph gusting to 70 kmph** by afternoon of 10th December evening and then to **40-50 kmph gusting to 60 kmph** by 10th December night.
- ❖ **Squally wind speed reaching 40-50 kmph gusting to 60 kmph** likely over Gulf of Mannar from 08th December evening becoming **50-60 kmph gusting to 70 kmph** from 09th December evening to 10th December morning. It is likely to reduce gradually thereafter.

(iii) Sea condition

- ❖ **Sea condition likely to be rough to very rough** over Andaman Sea on 6th.
- ❖ **Sea condition likely to be rough to very rough** over Southeast Bay of Bengal during 6th & 7th.
- ❖ **Sea condition likely to be rough to very rough** over Southwest and adjoining areas of Westcentral Bay of Bengal till 7th evening and very rough to high thereafter till 10th evening and improve gradually thereafter.
- ❖ **Sea condition likely to be rough to very rough** along & off South Andhra Pradesh, Tamil Nadu, Puducherry and Sri Lanka coasts on 7th, 8th and 10th and high on 9th December.

(iv) Fishermen Warning (warning graphics enclosed)

Fishermen are advised not to venture into:

- ❖ Andaman Sea on 6 December.
- ❖ Southeast Bay of Bengal from 06th-07th December.
- ❖ Southwest Bay of Bengal from 06th-10th December
- ❖ Along & off Sri Lanka coast from 07th-09th December.
- ❖ Along & off Tamilnadu, Puducherry and South Andhra Pradesh coast and Gulf of Mannar from 07th-10th December

(v) Adverse Weather Warning for onshore and off-shore operations

- ❖ Regulate onshore and offshore operations over Southeast Bay of Bengal on 6th & 7th and over Southwest Bay of Bengal, along and off Tamilnadu, Puducherry and South Andhra Pradesh coast and Gulf of Mannar during 8th-10th December.

The system is under continuous surveillance and concerned state governments are being informed regularly. For updates kindly visit www.rsmcnewdelhi.imd.gov.in and www.mausam.imd.gov.in

Contact: Cyclone Warning Division, Office of the Director General of Meteorology,
India Meteorological Department, Ministry of Earth Sciences.

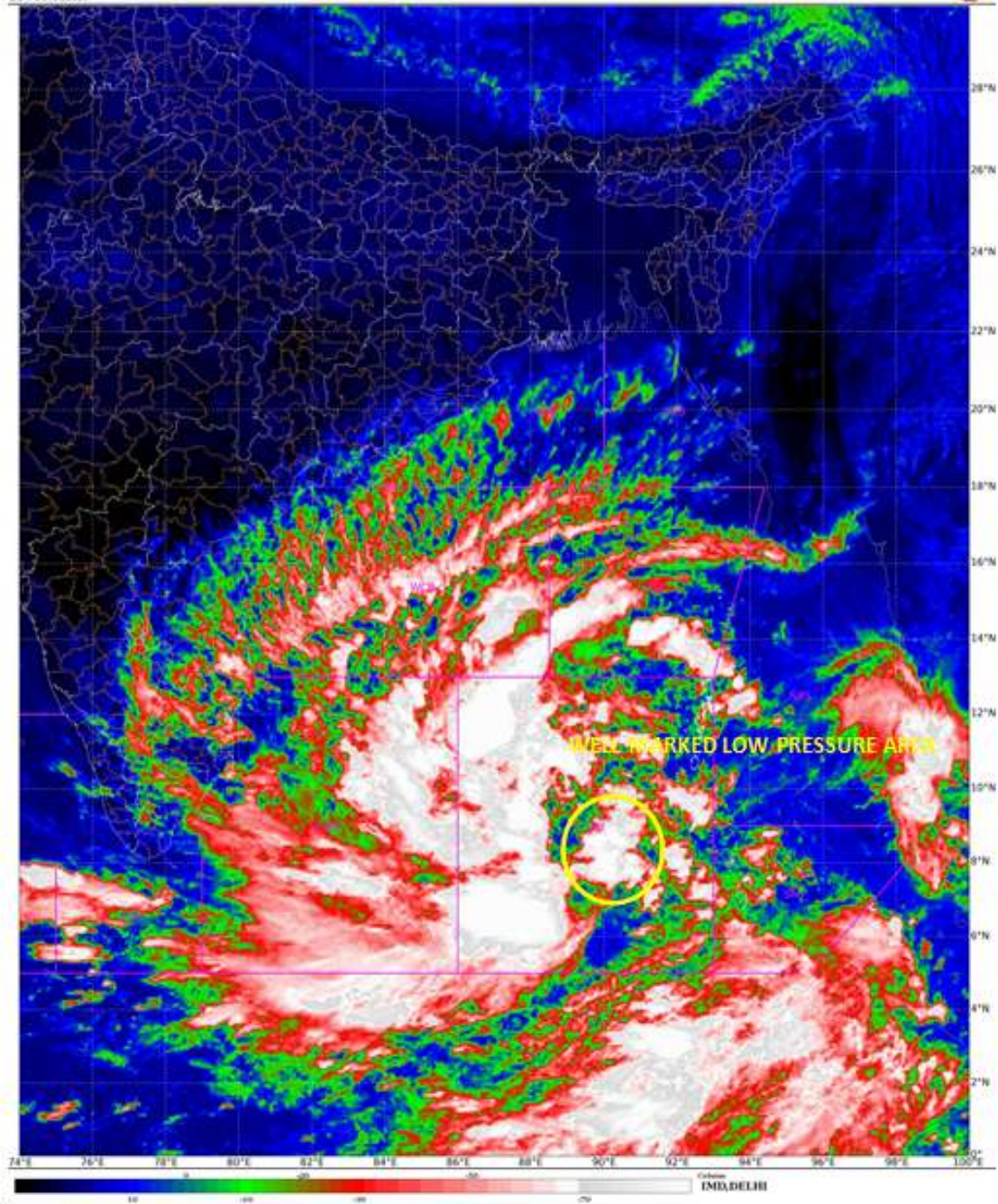
Phone: (91) 11-24652484, FAX: (91) 11-24643128, 24623220, E-mail: cwdhq2008@gmail.com, Website: rsmcnewdelhi.imd.gov.in

Spatial rainfall distribution: Isolated: <25%, A few: 26-50%, Many: 51-75%, Most: 76-100%

Rainfall amount (mm): Heavy rain: 64.5 – 115.5, Very heavy rain: 115.6 – 204.4, Extremely heavy rain: 204.5 or more.

SAT : INSAT-3D IMG
IMG_THIRI_TEMP 10.8 um
LIC Mercator

06-12-2022/(0630 to 0656) GMT
06-12-2022/(1200 to 1226) IST



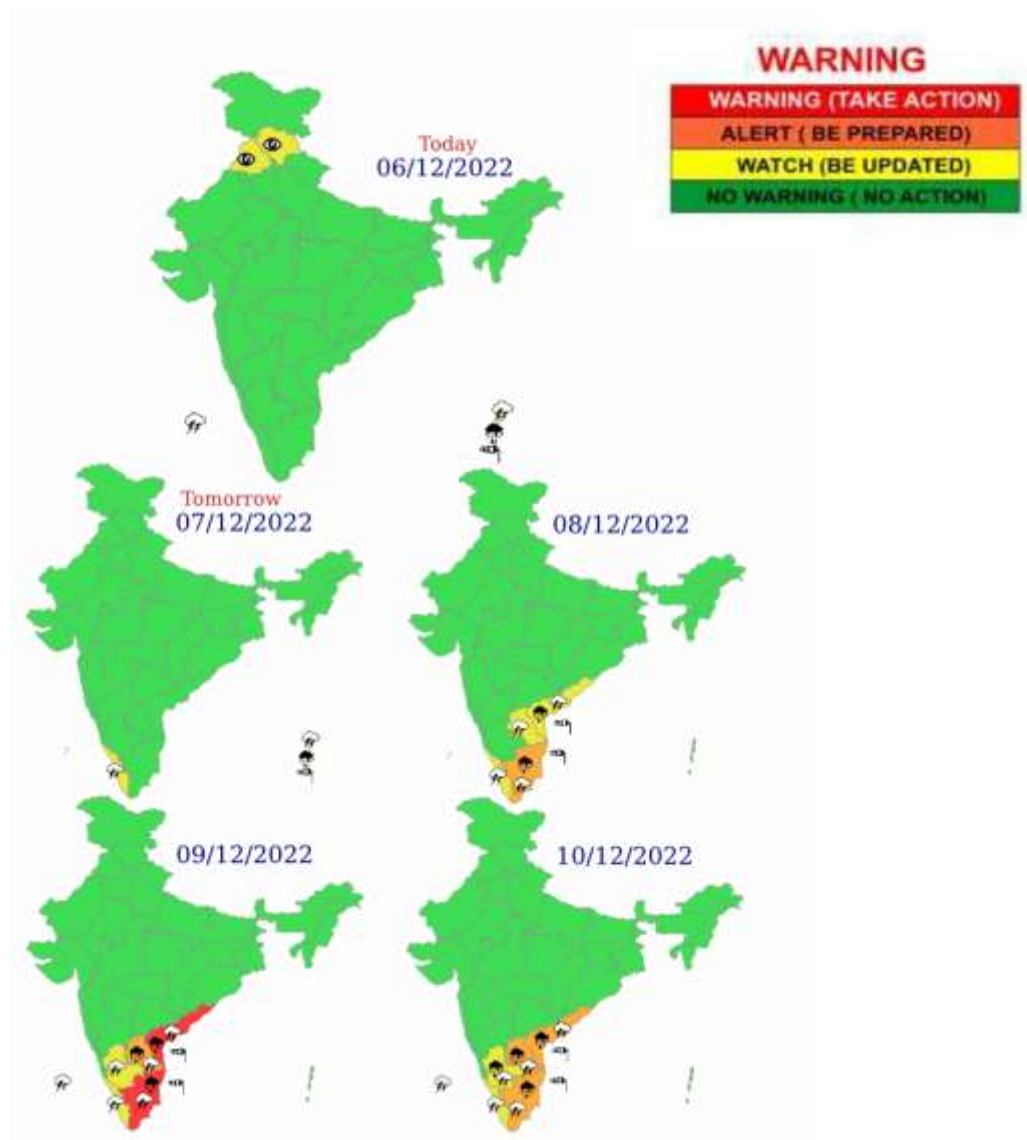
Contact: Cyclone Warning Division, Office of the Director General of Meteorology,
India Meteorological Department, Ministry of Earth Sciences.

Phone: (91) 11-24652484, FAX: (91) 11-24643128, 24623220, E-mail: cwdhq2008@gmail.com, Website: rsmcnewdelhi.imd.gov.in

Spatial rainfall distribution: Isolated: <25%, A few: 26-50%, Many: 51-75%, Most: 76-100%

Rainfall amount (mm): Heavy rain: 64.5 – 115.5, Very heavy rain: 115.6 – 204.4, Extremely heavy rain: 204.5 or more.

Multi hazard Warning Graphics



LEGEND: Heavy Rainfall: 64.5 to 115.5mm, Very Heavy Rainfall: 115.6 to 204.4mm **Most Places:** more than 76% of total stations, **Isolated Places:** Less than 25% of total

- | | | | |
|--|--|--|--|
|  Heavy Rain |  Heavy Snow |  Thunderstorm |  Dust Storm |
|  Strong Winds |  Visibility |  Cyclone |  Squall/ Hail |
|  Frost |  Cold Wave |  Heat Wave |  Sea State |

Contact: Cyclone Warning Division, Office of the Director General of Meteorology,
India Meteorological Department, Ministry of Earth Sciences.

Phone: (91) 11-24652484, FAX: (91) 11-24643128, 24623220, E-mail: cwdhq2008@gmail.com, Website: rsmcnewdelhi.imd.gov.in

Spatial rainfall distribution: Isolated: <25%, A few: 26-50%, Many: 51-75%, Most: 76-100%

Rainfall amount (mm): Heavy rain: 64.5 – 115.5, Very heavy rain: 115.6 – 204.4, Extremely heavy rain: 204.5 or more.



OBSERVED AND FORECAST TRACK OF WELL MARKED LOW PRESSURE AREA OVER SOUTHEAST BAY OF BENGAL BASED ON 0300 UTC OF 06th DECEMBER, 2022.



DATE/TIME IN UTC
 IST=UTC + 0530
 L: LOW PRESSURE AREA
 WML: WELL MARKED LOW PRESSURE AREA
 D: DEPRESSION (17-27 KT)
 DD: DEEP DEPRESSION (28-33 KT)
 CS: CYCLONIC STORM (34-47 KT)
 SCS: SEVERE CYCLONIC STORM (48-63KT)
 VSCS: VERY SEVERE CYCLONIC STORM (64-89 KT)
 ESCS: EXTREMELY SEVERE CYCLONIC STORM (90-119 KT)
 SuCS: SUPER CYCLONIC STORM (\geq 120 KT)

- LESS THAN 34 KT
- 34-47 KT
- \geq 48 KT
- OBSERVED TRACK
- FORECAST TRACK
- CONE OF UNCERTAINTY

Contact: Cyclone Warning Division, Office of the Director General of Meteorology,
 India Meteorological Department, Ministry of Earth Sciences.
 Phone: (91) 11-24652484, FAX: (91) 11-24643128, 24623220, E-mail: cwdhq2008@gmail.com, Website: rsmcnewdelhi.imd.gov.in
 Spatial rainfall distribution: Isolated: <25%, A few: 26-50%, Many: 51-75%, Most: 76-100%
 Rainfall amount (mm): Heavy rain: 64.5 – 115.5, Very heavy rain: 115.6 – 204.4, Extremely heavy rain: 204.5 or more.



OBSERVED AND FORECAST TRACK ALONGWITH QUADRANT WIND DISTRIBUTION OF WELL MARKED LOW PRESSURE AREA OVER SOUTHEAST BAY OF BENGAL BASED ON 0300 UTC OF 06th DECEMBER, 2022.



DATE/TIME IN UTC
IST-UTC + 0530

L: LOW PRESSURE AREA

WML: WELL MARKED LOW PRESSURE AREA

D: DEPRESSION (17-27 KT)

DD: DEEP DEPRESSION (28-33 KT)

CS: CYCLONIC STORM (34-47 KT)

SCS: SEVERE CYCLONIC STORM (48-63KT)

VSCS: VERY SEVERE CYCLONIC STORM (64-89 KT)

ESCS: EXTREMELY SEVERE CYCLONIC STORM (90-119 KT)

SuCS: SUPER CYCLONIC STORM (≥20 KT)

- LESS THAN 34 KT
- 34-47 KT
- ≥ 48 KT

● OBSERVED TRACK

● FORECAST TRACK

● CONE OF UNCERTAINTY

AREA OF MAXIMUM SUSTAINED WIND SPEED:

■ 28-33 KT (52-61 KMPH)

■ 34-49 KT (62-91 KMPH)

■ 50-63 KT (92-117 KMPH)

■ ≥ 64 KT (≥118 KMPH)

IMPACT OVER THE SEA

MSW (knot/kmph)	Impact	Action
28-33 (52-61)	Very rough seas	Total suspension of fishing operations
34-49 (62-91)	High to very high seas	Total suspension of fishing operations
50-63 (92-117)	Very high seas	Total suspension of fishing operations
≥ 64 (≥118)	Phenomenal	Total suspension of fishing operations

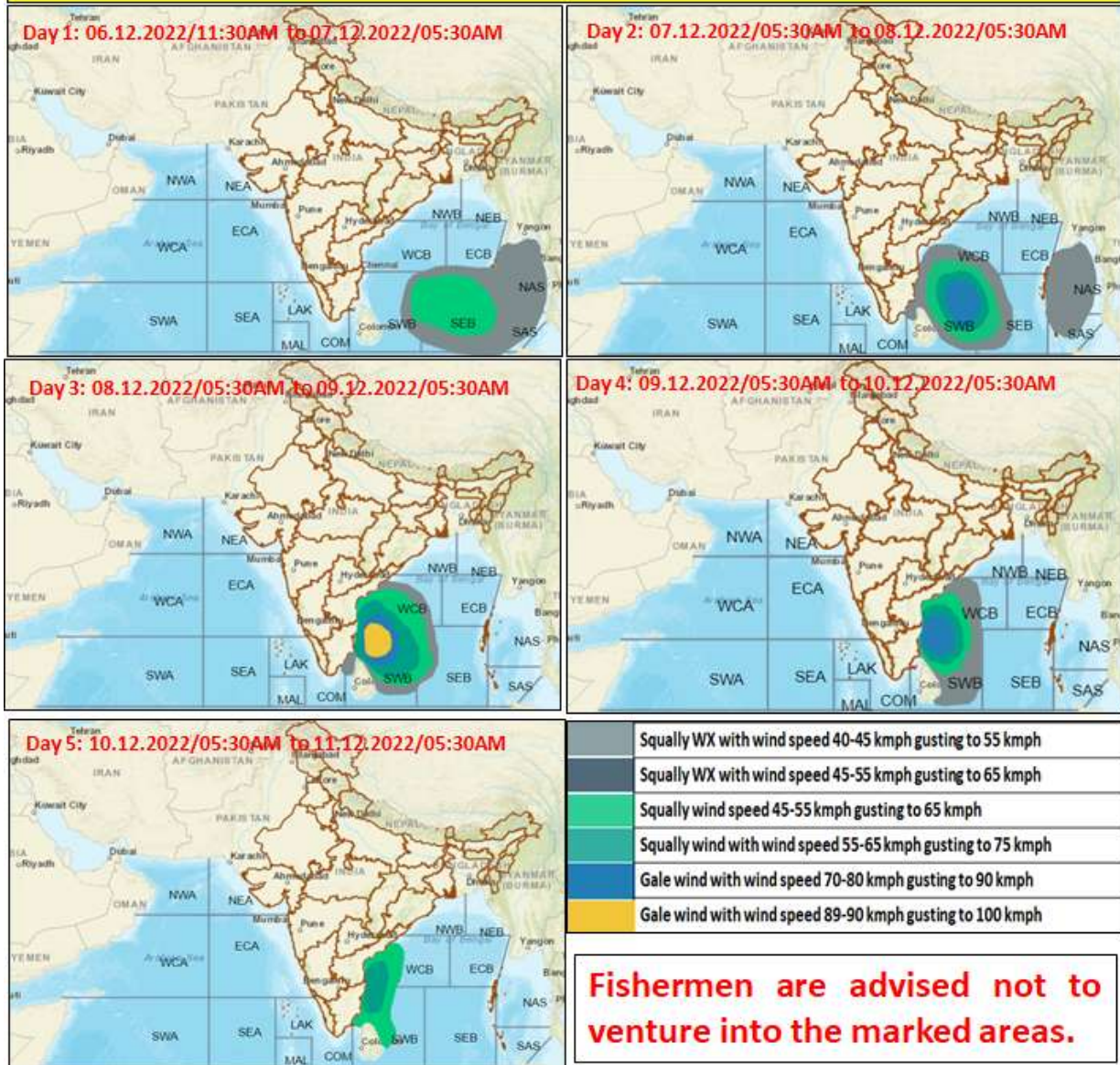
Contact: Cyclone Warning Division, Office of the Director General of Meteorology,
India Meteorological Department, Ministry of Earth Sciences.

Phone: (91) 11-24652484, FAX: (91) 11-24643128, 24623220, E-mail: cwdhq2008@gmail.com, Website: rsmcnewdelhi.imd.gov.in

Spatial rainfall distribution: Isolated: <25%, A few: 26-50%, Many: 51-75%, Most: 76-100%

Rainfall amount (mm): Heavy rain: 64.5 – 115.5, Very heavy rain: 115.6 – 204.4, Extremely heavy rain: 204.5 or more.

Fishermen warning graphics



Contact: Cyclone Warning Division, Office of the Director General of Meteorology,
India Meteorological Department, Ministry of Earth Sciences.

Phone: (91) 11-24652484, FAX: (91) 11-24643128, 24623220, E-mail: cwdhq2008@gmail.com, Website: rsmcnewdelhi.imd.gov.in

Spatial rainfall distribution: Isolated: <25%, A few: 26-50%, Many: 51-75%, Most: 76-100%

Rainfall amount (mm): Heavy rain: 64.5 – 115.5, Very heavy rain: 115.6 – 204.4, Extremely heavy rain: 204.5 or more.