



Government of India  
Ministry of Earth Sciences



India Meteorological Department

## PRESS RELEASE – 5

Time of issue: 1230 hours IST

Dated: 10 December, 2022

### Sub: Deep Depression (Remnant of Cyclonic Storm Mandous) over north Tamil Nadu

Yesterday's cyclonic storm "Mandous" pronounced as "Man-Dous" over Southwest Bay of Bengal off north Tamilnadu and Puducherry coasts moved nearly northwestwards, with a speed of 12 kmph and crossed north Tamil Nadu, Puducherry and adjoining south Andhra Pradesh coasts near latitude 12.6°N and longitude 80.15°E, close to Mamallapuram (Mahabalipuram) during midnight of yesterday, the 9th December and early hours of today, the 10th December as a Cyclonic Storm with the maximum sustained wind speed of 65-75 kmph gusting to 85 kmph.

Thereafter, It moved west-northwestwards initially with the speed of 15kmph, weakened into a Deep Depression over north Tamil Nadu in the early morning (0530 hours IST) of today, the 10th December. It then moved west-southwestwards and lay centred at 0830 hrs IST over north Tamil Nadu near latitude 12.8°N and longitude 79.5°E, about 40 km west-southwest of Vellore and 140 km east-northeast of Krishnagiri (Tamil Nadu). It is very likely to move nearly west-southwestwards and gradually weaken into a depression during next 6 hours.

#### **Warnings:**

##### **(i) Rainfall (warning graphics enclosed)**

- ❖ **10<sup>th</sup> December:-** Light to moderate rainfall at most places with **heavy to very heavy rainfall** at isolated places likely over Rayalaseema, north Tamil Nadu and south interior Karnataka.

##### **(ii) Wind warning:**

- ❖ **Southwest Bay of Bengal and along & off Tamil Nadu, Puducherry and south Andhra Pradesh coasts:-** Squally wind speed reaching 50-60 kmph gusting to 70 kmph likely to prevail till noon and to reduce thereafter becoming 30-40 kmph gusting to 50 kmph by 10<sup>th</sup> December evening.

##### **(iii) Sea condition**

- ❖ **Sea condition** likely to be **rough to very rough** over **Southwest Bay of Bengal and adjoining areas of westcentral Bay of Bengal, along & off Tamil Nadu, Puducherry and south Andhra Pradesh coasts** till evening of 10<sup>th</sup> December.

##### **(iv) Fishermen Warning (warning graphics enclosed)**

Fishermen are advised not to venture into:

- ❖ Southwest Bay of Bengal and along & off Tamilnadu, Puducherry and South Andhra Pradesh coasts till 10<sup>th</sup> December evening.

Contact: Cyclone Warning Division, Office of the Director General of Meteorology,  
India Meteorological Department, Ministry of Earth Sciences.

Phone: (91) 11-24652484, FAX: (91) 11-24643128, 24623220, E-mail: cwdhq2008@gmail.com, Website: [rsmcnewdelhi.imd.gov.in](http://rsmcnewdelhi.imd.gov.in)

Spatial rainfall distribution: Isolated: <25%, A few: 26-50%, Many: 51-75%, Most: 76-100%

Rainfall amount (mm): Heavy rain: 64.5 – 115.5, Very heavy rain: 115.6 – 204.4, Extremely heavy rain: 204.5 or more.

**(v) Damage expected over north Tamil Nadu, Rayalaseema and South Interior Karnataka during next 3 hours.**

- ❖ Damage to banana, papaya trees and near coastal agriculture due to salt spray.
- ❖ Damage to paddy, other standing crops and horticulture crops.
- ❖ Inundation/localized flooding in low lying areas due to heavy rains
- ❖ Traffic may be disrupted due to poor visibility in association with heavy rain

**(vi) Action suggested over north Tamil Nadu, Rayalaseema and South Interior Karnataka**

- ❖ Fisherman are advised not to venture into Southwest Bay of Bengal and adjoining areas of westcentral Bay of Bengal, along & off north Tamil Nadu and south Andhra Pradesh coasts till evening of 10<sup>th</sup> December.
- ❖ People are advised to be cautious while going outside.
- ❖ Regulate traffic.
- ❖ People should not move nearby to vulnerable structures.

**This is last the Press Release in association with this system.**

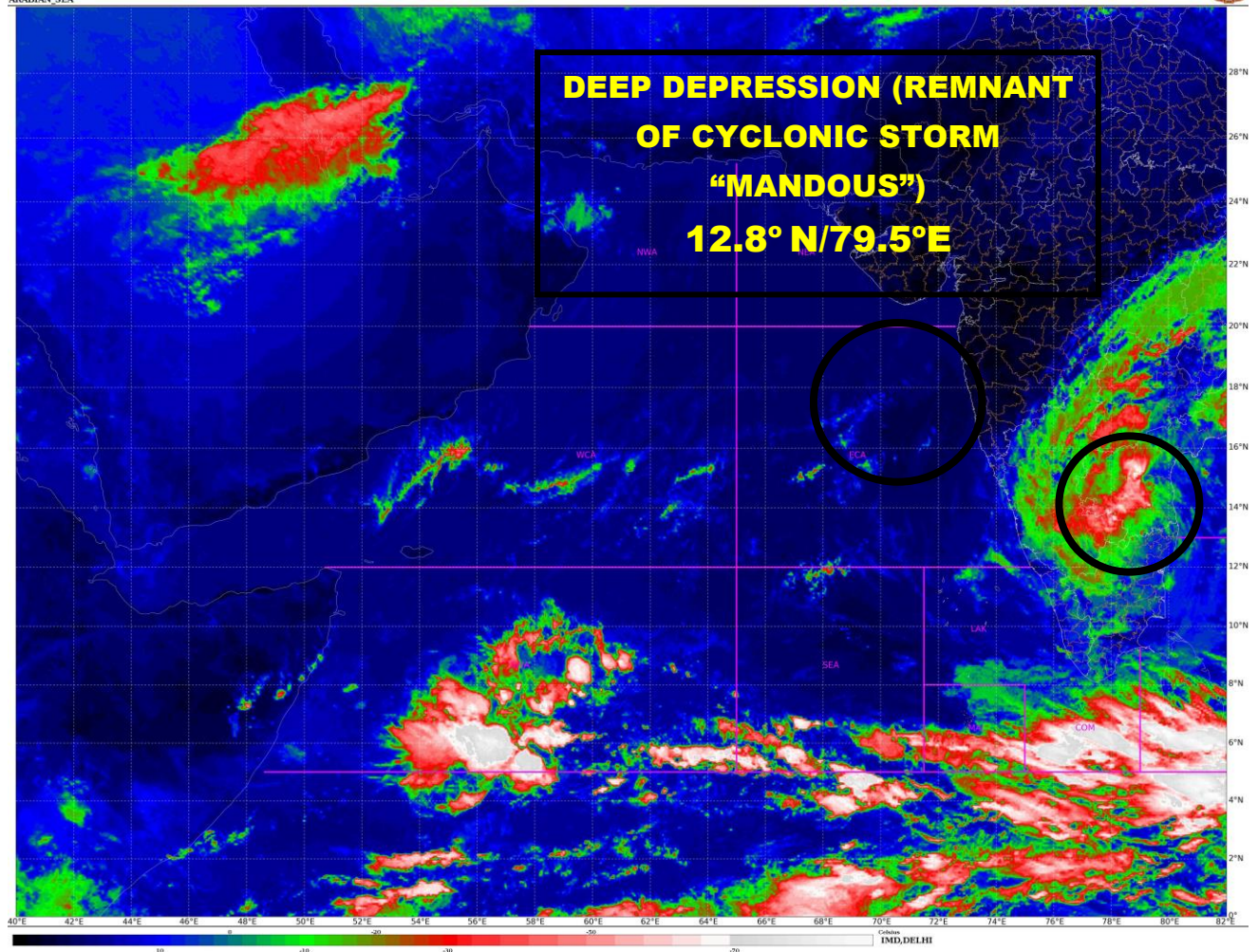
---

Contact: Cyclone Warning Division, Office of the Director General of Meteorology,  
India Meteorological Department, Ministry of Earth Sciences.

Phone: (91) 11-24652484, FAX: (91) 11-24643128, 24623220, E-mail: [cwdhq2008@gmail.com](mailto:cwdhq2008@gmail.com), Website: [rsmcnewdelhi.imd.gov.in](http://rsmcnewdelhi.imd.gov.in)

Spatial rainfall distribution: Isolated: <25%, A few: 26-50%, Many: 51-75%, Most: 76-100%

Rainfall amount (mm): Heavy rain: 64.5 – 115.5, Very heavy rain: 115.6 – 204.4, Extremely heavy rain: 204.5 or more.



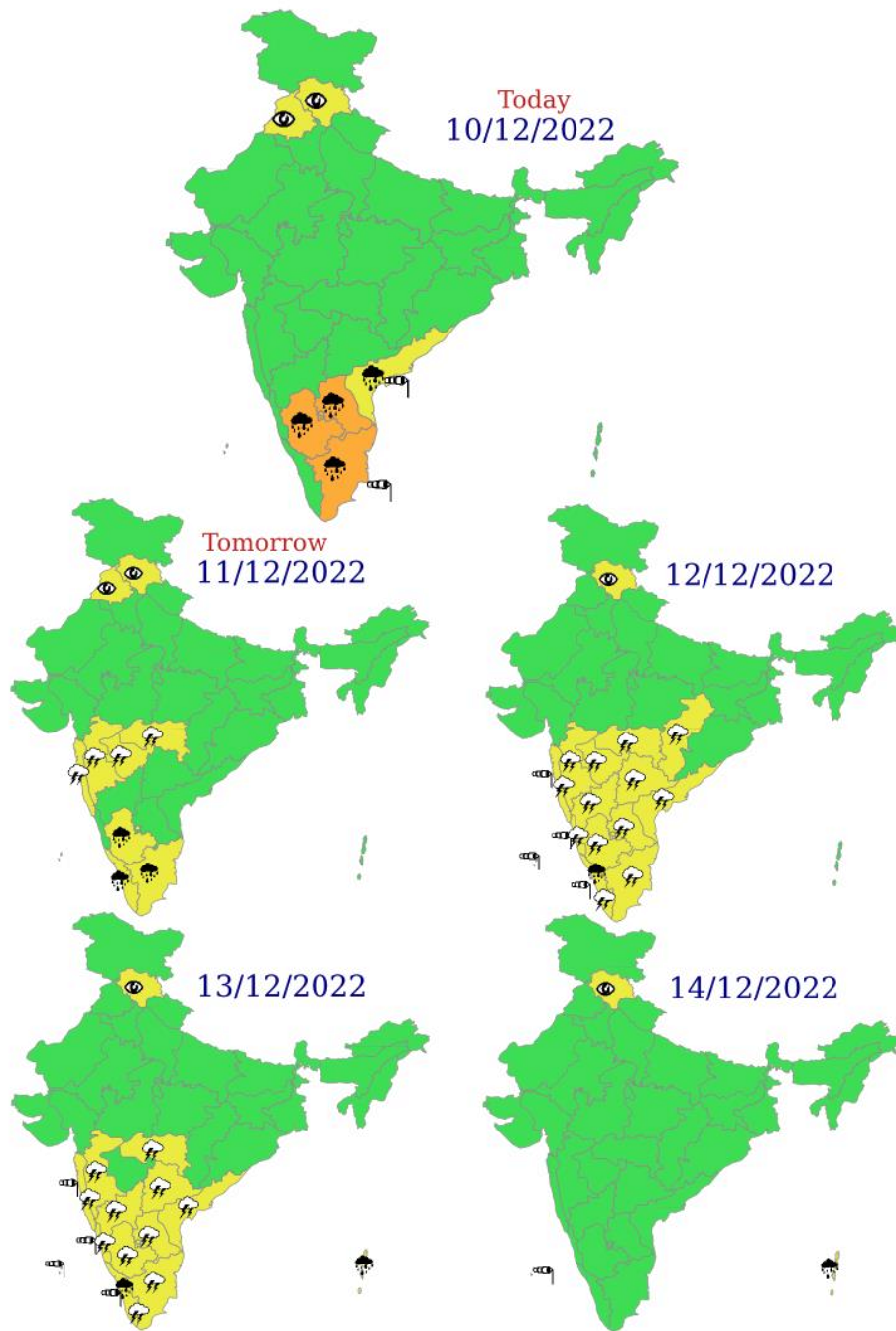
Contact: Cyclone Warning Division, Office of the Director General of Meteorology,  
India Meteorological Department, Ministry of Earth Sciences.

Phone: (91) 11-24652484, FAX: (91) 11-24643128, 24623220, E-mail: [cwdhq2008@gmail.com](mailto:cwdhq2008@gmail.com), Website: [rsmcnewdelhi.imd.gov.in](http://rsmcnewdelhi.imd.gov.in)

Spatial rainfall distribution: Isolated: <25%, A few: 26-50%, Many: 51-75%, Most: 76-100%

Rainfall amount (mm): Heavy rain: 64.5 – 115.5, Very heavy rain: 115.6 – 204.4, Extremely heavy rain: 204.5 or more.

# Multi hazard Warning Graphics



**LEGEND: Spatial rainfall distribution: Isolated: <25%, A few: 26-50%, Many: 51-75%, Most: 76-100%**  
**Rainfall amount (mm): Heavy rain: 64.5 – 115.5, Very heavy rain: 115.6 – 204.4, Extremely heavy rain: 204.5 or more.**

WARNING		Probabilistic Forecast		Heavy Rain	Heavy Snow	Thunderstorm	Dust Storm
WARNING (TAKE ACTION)	Red	Terms	Probability of Occurrence (%)				
ALERT (BE PREPARED)	Yellow	Unlikely	< 25				
WATCH (BE UPDATED)	Orange	Likely	25 - 50				
NO WARNING (NO ACTION)	Green	Very Likely	50 - 75				
		Most Likely	> 75				



**OBSERVED AND FORECAST TRACK OF DEEP DEPRESSION REMNANT OF CYCLONIC STORM 'MANDOUS' OVER NORTH TAMILNADU BASED ON 0300 UTC OF 10<sup>th</sup> DECEMBER, 2022.**

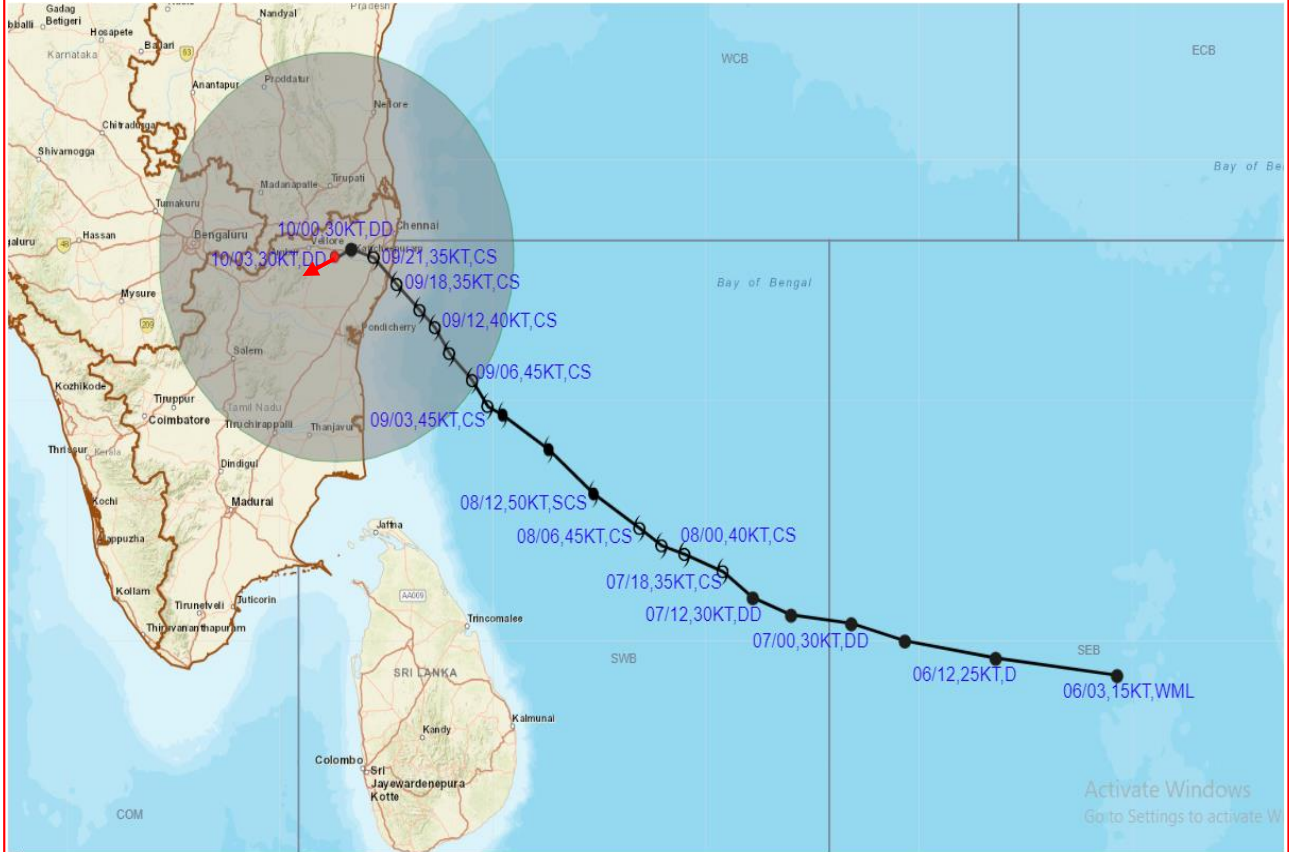


DATE/TIME IN UTC  
 IST=UTC + 0530  
 L: LOW PRESSURE AREA  
 WML: WELL MARKED LOW PRESSURE AREA  
 D: DEPRESSION (17-27 KT)  
 DD: DEEP DEPRESSION (28-33 KT)  
 CS: CYCLONIC STORM (34-47 KT)  
 SCS: SEVERE CYCLONIC STORM (48-63KT)  
 VSCS: VERY SEVERE CYCLONIC STORM (64-89 KT)  
 ESCS: EXTREMELY SEVERE CYCLONIC STORM (90-119 KT)  
 SuCS: SUPER CYCLONIC STORM ( $\geq$  120 KT)

- LESS THAN 34 KT
- 34-47 KT
- $\geq$  48 KT
- OBSERVED TRACK
- FORECAST TRACK
- CONE OF UNCERTAINTY



**OBSERVED AND FORECAST TRACK ALONGWITH QUADRANT WIND DISTRIBUTION OF DEEP DEPRESSION REMNANT OF CYCLONIC STORM 'MANDOUS' OVER NORTH TAMILNADU BASED ON 0300 UTC OF 10<sup>th</sup> DECEMBER, 2022**



DATE/TIME IN UTC

IST=UTC + 0530

L: LOW PRESSURE AREA

WML: WELL MARKED LOW PRESSURE AREA

D: DEPRESSION (17-27 KT)

DD: DEEP DEPRESSION (28-33 KT)

CS: CYCLONIC STORM (34-47 KT)

SCS: SEVERE CYCLONIC STORM (48-63 KT)

VSCS: VERY SEVERE CYCLONIC STORM (64-89 KT)

ESCS: EXTREMELY SEVERE CYCLONIC STORM (90-119 KT)

SuCS: SUPER CYCLONIC STORM (≥20 KT)

● LESS THAN 34 KT

○ 34-47 KT

⊙ ≥ 48 KT

— OBSERVED TRACK

— FORECAST TRACK

○ CONE OF UNCERTAINTY

AREA OF MAXIMUM SUSTAINED WIND SPEED:

■ 28-33 KT (52-61 KMPH)

■ 34-49 KT (62-91 KMPH)

■ 50-63 KT (92-117 KMPH)

■ ≥ 64 KT (≥118 KMPH)

**IMPACT OVER THE SEA**

MSW (knot/kmph)	Impact	Action
28-33 (52-61)	Very rough seas	Total suspension of fishing operations
34-49 (62-91)	High to very high seas	Total suspension of fishing operations
50-63 (92-117)	Very high seas	Total suspension of fishing operations
≥ 64 (≥118)	Phenomenal	Total suspension of fishing operations

Contact: Cyclone Warning Division, Office of the Director General of Meteorology,

India Meteorological Department, Ministry of Earth Sciences.

Phone: (91) 11-24652484, FAX: (91) 11-24643128, 24623220, E-mail: cwdhq2008@gmail.com, Website: [rsmcnewdelhi.imd.gov.in](http://rsmcnewdelhi.imd.gov.in)

Spatial rainfall distribution: Isolated: <25%, A few: 26-50%, Many: 51-75%, Most: 76-100%

Rainfall amount (mm): Heavy rain: 64.5 – 115.5, Very heavy rain: 115.6 – 204.4, Extremely heavy rain: 204.5 or more.

## Fishermen warning graphics



	Squally weather with wind speed 40-45 kmph gusting to 55 kmph
	Squally wind with wind speed 45-55 kmph gusting to 65 kmph
	Squally wind speed with wind speed 50-60 kmph gusting to 70 kmph

**Fishermen are advised not to venture into the marked areas.**

Contact: Cyclone Warning Division, Office of the Director General of Meteorology, India Meteorological Department, Ministry of Earth Sciences.

Phone: (91) 11-24652484, FAX: (91) 11-24643128, 24623220, E-mail: [cwdhq2008@gmail.com](mailto:cwdhq2008@gmail.com), Website: [rsmcnewdelhi.imd.gov.in](http://rsmcnewdelhi.imd.gov.in)

Spatial rainfall distribution: Isolated: <25%, A few: 26-50%, Many: 51-75%, Most: 76-100%

Rainfall amount (mm): Heavy rain: 64.5 – 115.5, Very heavy rain: 115.6 – 204.4, Extremely heavy rain: 204.5 or more.