



Government of India  
Ministry of Earth Sciences



India Meteorological Department

## PRESS RELEASE-7

Time of issue: 1300 hours IST

Dated: 18 June, 2023

### Sub: Depression (Remnant of Cyclonic Storm 'Biparjoy') over central parts of South Rajasthan and neighbourhood

Yesterday's deep depression (remnant of cyclonic storm "Biparjoy") over Southwest Rajasthan and adjoining Gujarat moved east-northeastwards and weakened into a depression over South Rajasthan and adjoining North Gujarat. Continuing to move further east-northeastwards, it lay centered at 0830 hours IST of today, the 18<sup>th</sup> June, 2023 over central parts of South Rajasthan & neighbourhood near latitude 26.2°N and longitude 73.8°E, about 80 km east-southeast of Jodhpur and 90 km west-southwest of Ajmer.

It is very likely to continue to move east-northeastwards and maintain the intensity of Depression till evening of today, the 18<sup>th</sup> June.

#### Warnings:

##### (i) Heavy Rainfall Warning (Gujarat, Rajasthan and Madhya Pradesh):

- Light to moderate rainfall at most places with isolated heavy to very heavy rainfall is very likely over **Southwest Rajasthan** on 18<sup>th</sup> June.
- Light to moderate rainfall at most places is very likely with isolated heavy to extremely heavy rainfall over **Southeast Rajasthan** on 18<sup>th</sup> June, isolated heavy to very heavy rainfall on 19<sup>th</sup> June and isolated heavy rainfall on 20<sup>th</sup> June.
- Light to moderate rainfall at most places is likely with isolated heavy rainfall over **Northeast Rajasthan** on 18<sup>th</sup> June, isolated heavy to very heavy rainfall on 19<sup>th</sup> June and isolated heavy rainfall on 20<sup>th</sup> June.
- Light to moderate rainfall at most places is likely with isolated heavy to very heavy rainfall over **West Madhya Pradesh** on 19<sup>th</sup> and 20<sup>th</sup> June and isolated heavy rainfall over **southwest Uttar Pradesh** on 20<sup>th</sup> June.
- Light to moderate rainfall at many places is likely with isolated heavy rainfall over **North Gujarat Region** on 18<sup>th</sup> June.

##### (ii) Wind warning:

##### Wind Warning for Rajasthan and adjoining North Gujarat

- Squally wind speed reaching 40-50 kmph gusting to 60 kmph is very likely till evening of 18<sup>th</sup> June over **South Rajasthan and adjoining areas of North Gujarat** and decrease thereafter becoming strong wind speed reaching 25-35 kmph gusting to 45 kmph thereafter over **East Rajasthan and adjoining areas** till morning of 19<sup>th</sup> June.

Contact: Cyclone Warning Division, Office of the Director General of Meteorology,  
India Meteorological Department, Ministry of Earth Sciences.

Phone:(91) 11-24652484, FAX: (91) 11-24643128, 24623220, E-mail:cwdhq2008@gmail.com, Website: [rsmcnewdelhi.imd.gov.in](http://rsmcnewdelhi.imd.gov.in)

Spatial rainfall distribution: Isolated: <25%, A few: 26-50%, Many: 51-75%, Most: 76-100%

Rainfall amount (mm): Heavy rain: 64.5 – 115.5, Very heavy rain: 115.6 – 204.4, Extremely heavy rain: 204.5 or more.

**(iii) Damage expected over south Rajasthan and adjoining areas of Districts of North Gujarat during next 12 hours:**

- Inundation of low lying areas.
- Reduction in visibility causing difficulty in surface transport in heavy rain
- Some breaches in Kutcha road due to flooding.
- Damage to loose / unsecured structures.
- Minor damage to Banana, papaya, drumstick trees and horticultural crops.

**(iv) Action suggested:**

- Avoid staying in low lying areas which could be inundated due to heavy rain.
- Protect solar panels etc. from damage due to strong winds & lightning.
- Stay indoors, close windows & doors and avoid travel, if possible, during thunderstorms & gusty winds.
- Take safe shelters; do not take shelter under trees.
- Keep away from all the objects that conduct electricity during thunderstorm.
- Adventure activities & tourism trips may be avoided.
- Make necessary arrangements for draining out excess water from crop fields to avoid water stagnation in Gujarat, Rajasthan, West Madhya Pradesh.
- Provide mechanical support to horticultural crops and staking to vegetables.

**The system is under continuous surveillance and the next message will be issued at 1430 hours IST of the 19<sup>th</sup> June, 2023.**

**For regular updates kindly visit [www.rsmcnewdelhi.imd.gov.in](http://www.rsmcnewdelhi.imd.gov.in) and [www.mausam.imd.gov.in](http://www.mausam.imd.gov.in)**

---

Contact: Cyclone Warning Division, Office of the Director General of Meteorology,  
India Meteorological Department, Ministry of Earth Sciences.

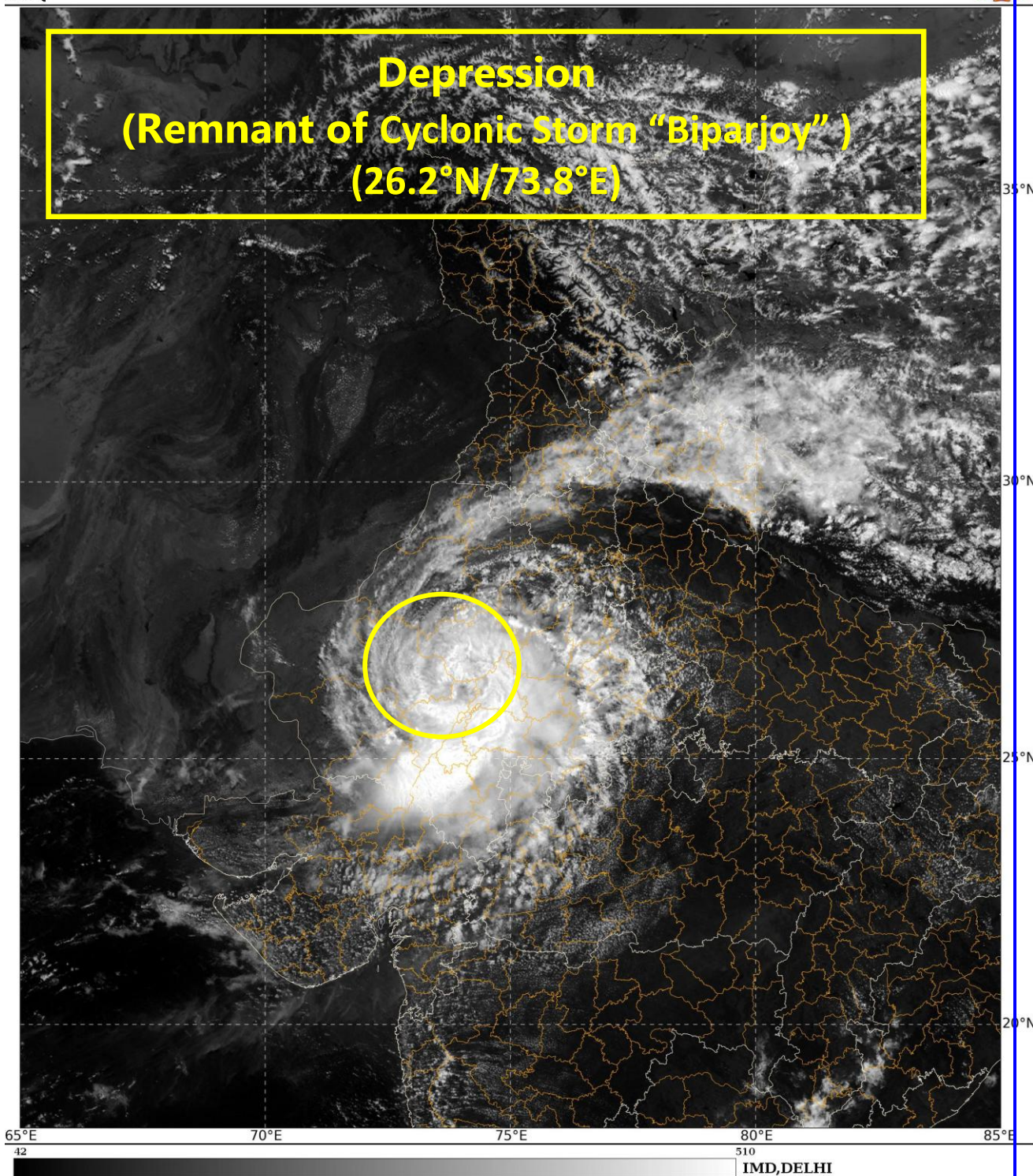
Phone:(91) 11-24652484, FAX: (91) 11-24643128, 24623220, E-mail:cwdhq2008@gmail.com, Website: [www.rsmcnewdelhi.imd.gov.in](http://www.rsmcnewdelhi.imd.gov.in)

Spatial rainfall distribution: Isolated: <25%, A few: 26-50%, Many: 51-75%, Most: 76-100%

Rainfall amount (mm): Heavy rain: 64.5 – 115.5, Very heavy rain: 115.6 – 204.4, Extremely heavy rain: 204.5 or more.

SAT : INSAT-3D IMG  
Visible Count 0.65 um  
NWQ

18-06-2023/(0600 to 0627) GMT  
18-06-2023/(1130 to 1157) IST



Contact: Cyclone Warning Division, Office of the Director General of Meteorology,  
India Meteorological Department, Ministry of Earth Sciences.

Phone:(91) 11-24652484, FAX: (91) 11-24643128, 24623220, E-mail:cwdhq2008@gmail.com, Website: [rsmcnewdelhi.imd.gov.in](http://rsmcnewdelhi.imd.gov.in)

Spatial rainfall distribution: Isolated: <25%, A few: 26-50%, Many: 51-75%, Most: 76-100%

Rainfall amount (mm): Heavy rain: 64.5 – 115.5, Very heavy rain: 115.6 – 204.4, Extremely heavy rain: 204.5 or more.



**OBSERVED AND FORECAST TRACK OF DEPRESSION (REMANANT OF CYCLONIC STORM BIPARJOY) OVER CENTRAL PARTS OF SOUTH RAJASTHAN AND NEIGHBOURHOOD BASED ON 0300 UTC (0830 IST) OF 18<sup>TH</sup> JUNE 2023.**



DATE/TIME IN UTC

IST=UTC + 0530

L: LOW PRESSURE AREA

WML: WELL MARKED LOW PRESSURE AREA

D: DEPRESSION (17-27 KT)

DD: DEEP DEPRESSION (28-33 KT)

CS: CYCLONIC STORM (34-47 KT)

SCS: SEVERE CYCLONIC STORM (48-63KT)

VSCS: VERY SEVERE CYCLONIC STORM (64-89 KT)

ESCS: EXTREMELY SEVERE CYCLONIC STORM (90-119 KT)

SuCS: SUPER CYCLONIC STORM ( $\geq 120$  KT)

● LESS THAN 34 KT

○ 34-47 KT

○  $\geq 48$  KT

— OBSERVED TRACK

— FORECAST TRACK

▲ CONE OF UNCERTAINTY

Contact: Cyclone Warning Division, Office of the Director General of Meteorology,

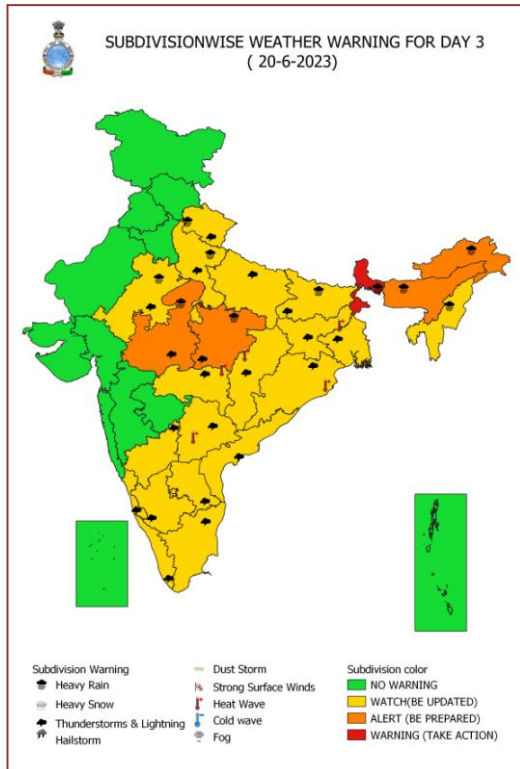
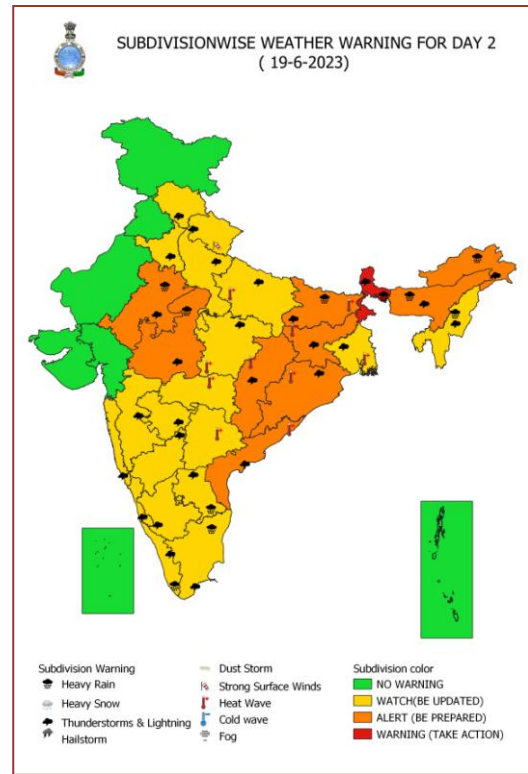
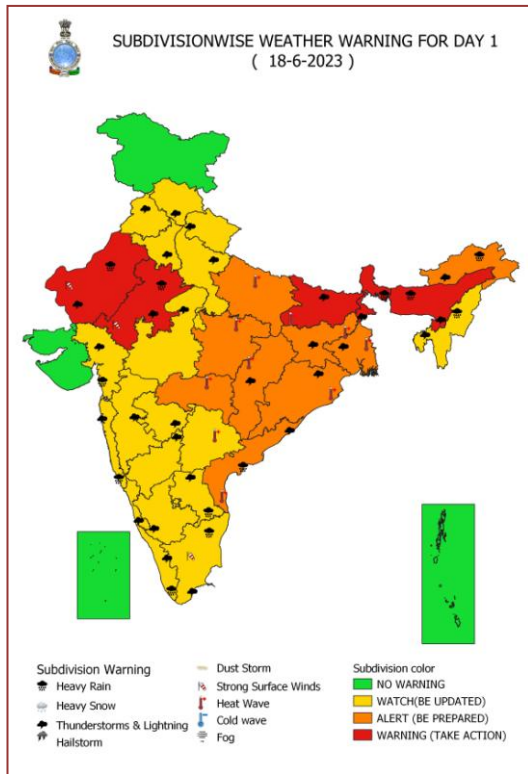
India Meteorological Department, Ministry of Earth Sciences.

Phone:(91) 11-24652484, FAX: (91) 11-24643128, 24623220, E-mail:cwdhq2008@gmail.com, Website: [smcnewdelhi.imd.gov.in](http://smcnewdelhi.imd.gov.in)

Spatial rainfall distribution: Isolated: <25%, A few: 26-50%, Many: 51-75%, Most: 76-100%

Rainfall amount (mm): Heavy rain: 64.5 – 115.5, Very heavy rain: 115.6 – 204.4, Extremely heavy rain: 204.5 or more.

## All India Heavy Rainfall Warning Maps for 18<sup>th</sup> & 19<sup>th</sup> June



Contact: Cyclone Warning Division, Office of the Director General of Meteorology,  
India Meteorological Department, Ministry of Earth Sciences.

Phone:(91) 11-24652484, FAX: (91) 11-24643128, 24623220, E-mail:cwdhq2008@gmail.com, Website: [rsmcnewdelhi.imd.gov.in](http://rsmcnewdelhi.imd.gov.in)

Spatial rainfall distribution: Isolated: <25%, A few: 26-50%, Many: 51-75%, Most: 76-100%

Rainfall amount (mm): Heavy rain: 64.5 – 115.5, Very heavy rain: 115.6 – 204.4, Extremely heavy rain: 204.5 or more.



## Outlook for the Persistent Flash Flood Threat (PFFT) Flash Flood Risk (FFR)

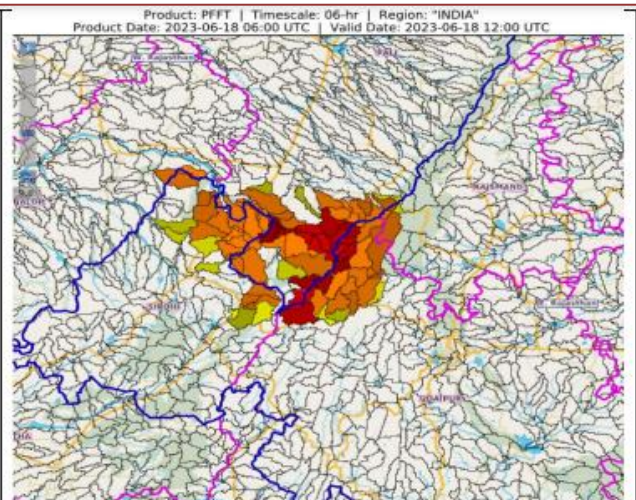
### Persistent Flash Flood Threat (PFFT) till 1730 IST of 18-06-2023 :

**Light to Moderate flash flood threat** likely over few watersheds & neighbourhoods of following Met Sub-divisions during next 6 hours.

**East Rajasthan** - Rajsmand, Sirohi and Udaipur districts.

**West Rajasthan** - Pali district.

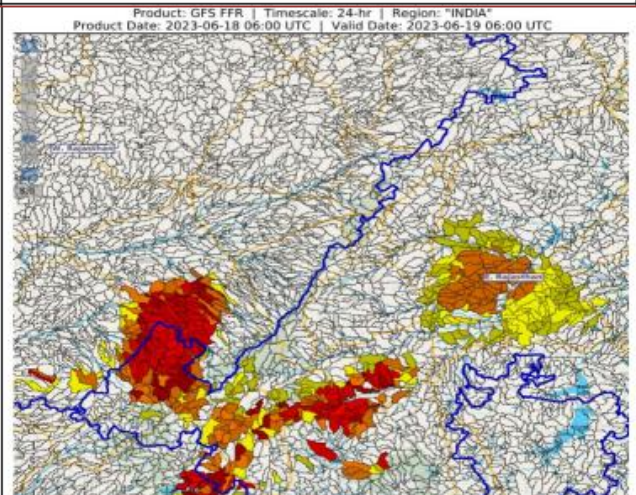
Surface runoff/ Inundation may occur at some fully saturated soils & low-lying areas over AoC as shown in map due to expected rainfall occurrence in next 6 hours.



### 24 hours Outlook for the Flash Flood Risk (FFR) till 1130 IST of 19-06-2023 :

**Light to Moderate flash flood risk** likely over few watersheds & neighbourhoods of **East Rajasthan** and **West Rajasthan** Met Sub-divisions during next 24 hours.

Surface runoff/ Inundation may occur at some fully saturated soils & low-lying areas over AoC as shown in map due to expected rainfall occurrence in next 24 hours.



Contact: Cyclone Warning Division, Office of the Director General of Meteorology,  
India Meteorological Department, Ministry of Earth Sciences.

Phone:(91) 11-24652484, FAX: (91) 11-24643128, 24623220, E-mail:cwdhq2008@gmail.com, Website: [rsmcnewdelhi.ind.gov.in](http://rsmcnewdelhi.ind.gov.in)

Spatial rainfall distribution: Isolated: <25%, A few: 26-50%, Many: 51-75%, Most: 76-100%

Rainfall amount (mm): Heavy rain: 64.5 – 115.5, Very heavy rain: 115.6 – 204.4, Extremely heavy rain: 204.5 or more.

**24 hours cumulative heavy rainfall ( $\geq 7$  cm) in cm ending at 0830 hours IST of 18<sup>th</sup> June:**

**Rajasthan:**

Mounntabu (Sirohi) 36, Chitalwana (Jalore) 34, Raniwada (Jalore) 32, Jalore (Jalore) 32, Sheoganj (Sirohi) 31, Sanchore (Jalore) 30, Jaswantpur (Jalore), 29, Sumerpur (Pali) 27, Chotan (Barmer) 27, Dhorimanna (Barmer) 26, Rani (Pali) 25, Reodar (Sirohi) 24, Bali (Pali) 24, Siwana (Barmer) 24, Bagoda (Jalore) 23, Jawai Dam (Pali) 23, Abu Road (Sirohi) 20, Pali (Pali) 20, Samdari (Barmer) 20, Sedwa (Barmer) 19, Dhanau (Barmer) 18, Balotra (Barmer) 18, Desuri (Pali) 18, Pindwara (Sirohi) 18, Bhinmal (Jalore) 17, Deogarh (Rajsamand) 15, Guddamalan (Barmer) 14, Marwar (Pali) 13, Junction Pachbhadra (Barmer) 13, Sirohi (Sirohi) 13, Kubhalgarh (Rajsamand) 12, Gadhbor (Rajsamand) 12, Gogunda (Udaipur) 12, Bhadrajun (Jalore) 11, Ahore (Jalore) 10, Kotda (Udaipur) 10, Nokda (Barmer) 9, Jodhpur (Jodhpur) 9, Luni (Jodhpur) 9, Kalyanpur (Barmer) 9, Sindhari (Barmer) 9, Jodhpur (Jodhpur) 9, Rohat (Pali) 9, Baitu (Barmer) 8, Sayla (Jalore) 8, Sojat (Pali) 8, Amet (Rajsamand) 7, Ramsar (Barmer) 7, Todgarh (Ajmer) 7