



**Government of India  
Ministry of Earth Sciences  
India Meteorological Department**

**Press Release  
Date: 23<sup>rd</sup> October, 2023  
Time of Issue: 1400 hours IST**

**Subject:**

**(i) Deep Depression over Westcentral Bay of Bengal likely to intensify into a Cyclonic Storm during next 6 hours. It is likely to cross Bangladesh coast between Khepupara and Chittagong around evening of 25th October.**

**(ii) Extremely Severe Cyclonic Storm weakened into a Very Severe Cyclonic Storm over Westcentral Arabian Sea. It is very likely to cross Yemen coast close to Al- Ghaidah around early hours of 24th October.**

**Rainfall recorded during past 24 hours till 0830 hours IST of today (23<sup>rd</sup> Oct. 2023): (Annexure I)**

**Significant Weather features:**

- ❖ Yesterday's Depression over Westcentral Bay of Bengal intensified into **Deep Depression** at 1730 hours IST of yesterday over the same region. It lay centered at 0830 hours IST of today, the 23<sup>rd</sup> October over the same region, near latitude 17.0°N and longitude 86.8°E, about 360 km south of Paradip (Odisha), 510 km south-southwest of Digha (West Bengal) and 660 km south-southwest of Khepupara (Bangladesh). It is likely to intensify into a Cyclonic Storm during next 6 hours. It is very likely to move nearly north-northeastwards and cross Bangladesh coast between Khepupara and Chittagong around evening of 25th October as a Deep Depression. **(Cyclone track in Annexure IV & Satellite imagery in Annexure VI)**
- ❖ Yesterday's Extremely Severe Cyclonic Storm over westcentral & adjoining southwest Arabian Sea weakened into a **Very Severe Cyclonic Storm** and lay centered at 0830 hours IST of today, the 23<sup>rd</sup> October over Westcentral Arabian Sea, near latitude 14.6°N and longitude 53.2°E, about 230 km north-northwest of Socotra (Yemen), 280 km south-southwest of Salalah (Oman) and 200 km south-southeast of Al Ghaidah (Yemen). It is very likely to continue to move northwestwards and cross Yemen coast close to Al- Ghaidah around early hours of 24th October as a Very Severe Cyclonic Storm with wind speed of 125-135 kmph gusting to 150 kmph. **(Cyclone track in Annexure V & Satellite imagery in Annexure VI).**

## Weather forecast & warnings for next 5 days: (Graphics in Annexure II)

- ❖ **South India:** Light to moderate rainfall at many places with isolated **heavy rainfall** with thunderstorm & lightning very likely over Kerala and Tamil Nadu on 23<sup>rd</sup> October.
- ❖ **Northeast India:** Light to moderate rainfall at some places with isolated **heavy rainfall** with thunderstorm & lightning over Assam & Meghalaya and Nagaland, Manipur, Mizoram & Tripura during 23<sup>rd</sup>-25<sup>th</sup> October. Isolated Very Heavy rainfall also very likely over Tripura on 24<sup>th</sup> October.
- ❖ **East India:** Light to moderate rainfall at some places with isolated **heavy rainfall** with thunderstorm & lightning over coastal areas of north Odisha on 23<sup>rd</sup> October and over coastal areas of Gangetic West Bengal on 24<sup>th</sup> October.

## Weather warnings in association with the Deep Depression over Westcentral Bay of Bengal:

### (i) Rainfall Warning (Graphics in Annexure II)

- ❖ **Manipur, Mizoram & Tripura and south Assam & Meghalaya:** Light to moderate rainfall at most places with isolated heavy rainfall over Mizoram and heavy to very rainfall over Tripura is likely on 23<sup>rd</sup> and 24<sup>th</sup> October. Isolated heavy rainfall is likely over the same region on 25<sup>th</sup> October. Rainfall intensity will decrease on 26<sup>th</sup> with light to moderate rainfall at a few places over the region.
- ❖ Light to moderate rainfall is likely at many places over south Assam and eastern Meghalaya on 24<sup>th</sup> and 25<sup>th</sup> October with isolated heavy rainfall over south Assam.
- ❖ **Coastal Districts of Odisha:** Light to moderate rainfall at most places is likely on 23<sup>rd</sup> and 24<sup>th</sup> October with isolate heavy rainfall over coastal areas of north Odisha on 23<sup>rd</sup> October.
- ❖ **Coastal Districts of West Bengal:** Light to moderate rainfall at most places is likely on 23<sup>rd</sup> and 24<sup>th</sup> October with isolated heavy rainfall over coastal areas of West Bengal on 24<sup>th</sup> October.

### (ii) Wind warning

- ❖ **Westcentral Bay of Bengal:** Squally wind speed reaching 50-60 kmph gusting to 70 kmph is prevailing and likely to increase becoming 55-65 kmph gusting to 75 kmph from 23<sup>rd</sup> evening till 24<sup>th</sup> October morning. It is likely to decrease gradually from 24<sup>th</sup> noon becoming squally wind speed reaching 40-50 kmph gusting 60 kmph by 24<sup>th</sup> evening.
- ❖ **Adjoining eastcentral Bay of Bengal:** Squally wind speed reaching 45-55 kmph gusting to 65 kmph is likely to increase gradually becoming 50-60 kmph gusting to 70 kmph on 24<sup>th</sup> and decrease from 25<sup>th</sup> onwards.
- ❖ **North Bay of Bengal:** Squally wind speed reaching 40-50 kmph gusting to 60 kmph is prevailing and likely to become 50-60 kmph gusting to 70 kmph from today evening. It would become Gale wind speed reaching 60-70 kmph gusting to 80 kmph from 24<sup>th</sup> October morning and 80-90 kmph gusting 100 kmph during 24<sup>th</sup> evening to night. It would decrease gradually thereafter.
- ❖ **Along & off Odisha, West Bengal, Bangladesh and north Myanmar coasts:** Squally wind speed reaching 40-50 kmph gusting to 60 kmph is likely from 23<sup>rd</sup> evening to 24<sup>th</sup> along & off Odisha coast. Squally wind speed reaching 40-50 kmph gusting to 60 kmph is likely to commence along & off West Bengal, Bangladesh and North Myanmar coasts from 24<sup>th</sup> morning. It would gradually increase becoming 55-65 kmph gusting to 75 kmph along & off Bangladesh coast, 50-60 kmph gusting to 70 kmph along & off north Myanmar coast and 45-55 kmph gusting to 65 along & off west Bengal coast on 25<sup>th</sup> October.
- ❖ **Mizoram, Tripura, south Assam and Manipur:** Squally wind speed reaching 40-50 kmph gusting to 60 kmph is likely to prevail over Mizoram and Tripura and Strong wind speed reaching 30-40 kmph gusting to 50 kmph over south Assam & Manipur on 25<sup>th</sup> October.

### (iii) Fishermen Warning (Graphics in Annexure III): Fishermen are advised not to venture into

- ❖ **Adjoining eastcentral Bay of Bengal** from 23<sup>rd</sup> to 25<sup>th</sup> October.
- ❖ **Westcentral Bay of Bengal** till 24<sup>th</sup> October.

- ❖ **North Bay of Bengal and along & off Odisha, West Bengal, Bangladesh and north Myanmar coasts** during 23rd to 25th October.

**Weather warnings in association with the Very Severe Cyclonic Storm over Westcentral Arabian Sea:**

**(i) Wind warning:**

- ❖ **Southwest Arabian Sea:** Squally wind speed reaching 50-60 kmph gusting to 70 kmph prevailing over the region is likely to decrease gradually from today evening.
- ❖ **Westcentral Arabian Sea:** Gale wind speed reaching 155-165 kmph gusting to 180 kmph is prevailing and is likely to decrease gradually becoming 135-145 kmph gusting to 160 kmph by 23rd evening and 125-135 kmph gusting to 150 kmph by early hours of 24th October. It would decrease rapidly after the landfall becoming 90-100 kmph gusting to 110 kmph in the morning of 24th October and Squally wind speed reaching 45-55 kmph gusting to 65 kmph by evening. It would decrease gradually thereafter.

**(ii) Fishermen Warning (Graphics in Annexure III):** Fishermen are advised not to venture into

- ❖ **Southwest Arabian Sea** till 24th October morning.
- ❖ **Westcentral Arabian Sea** till night of 24th October.

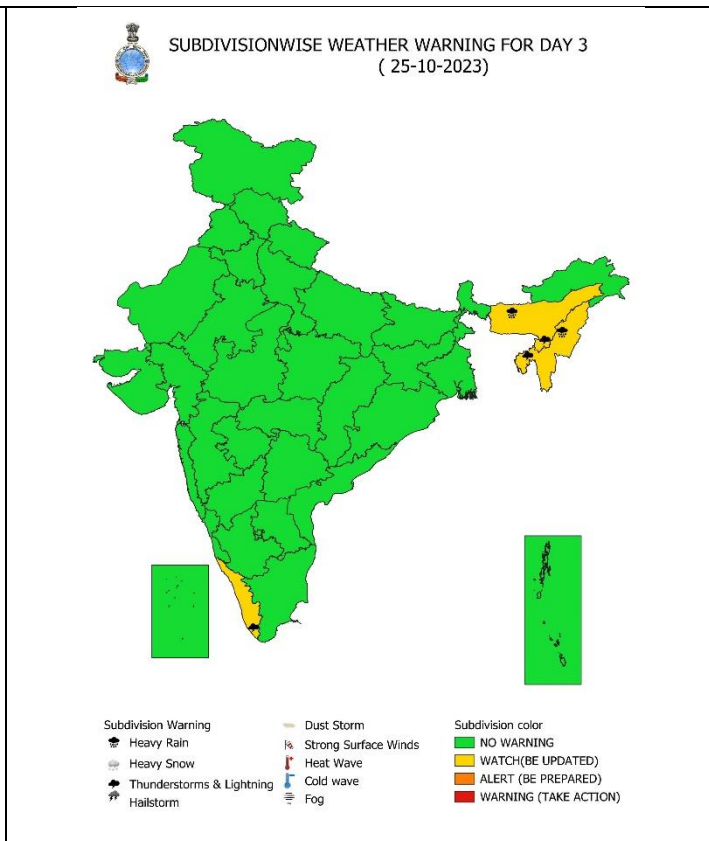
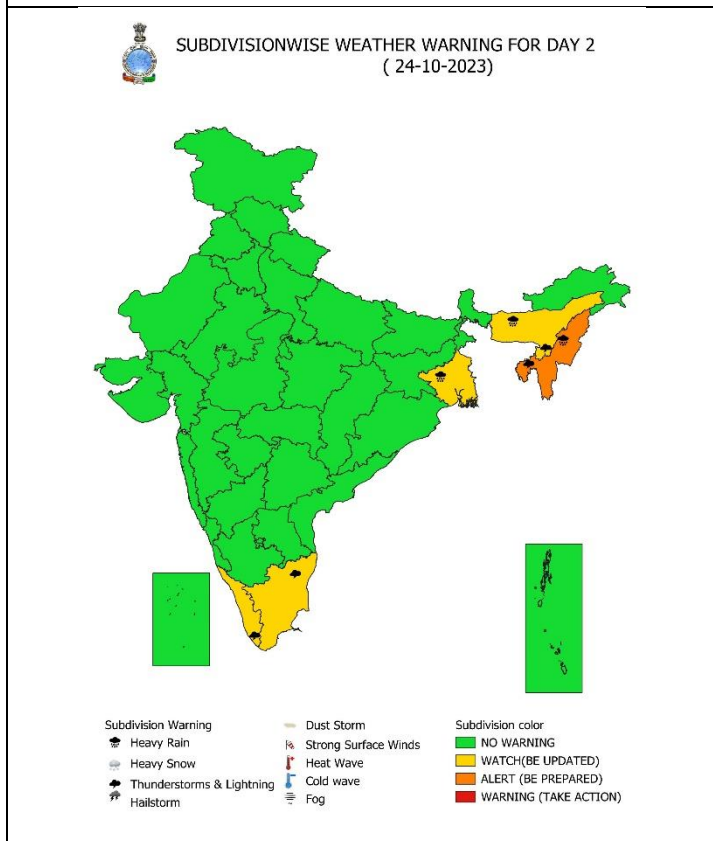
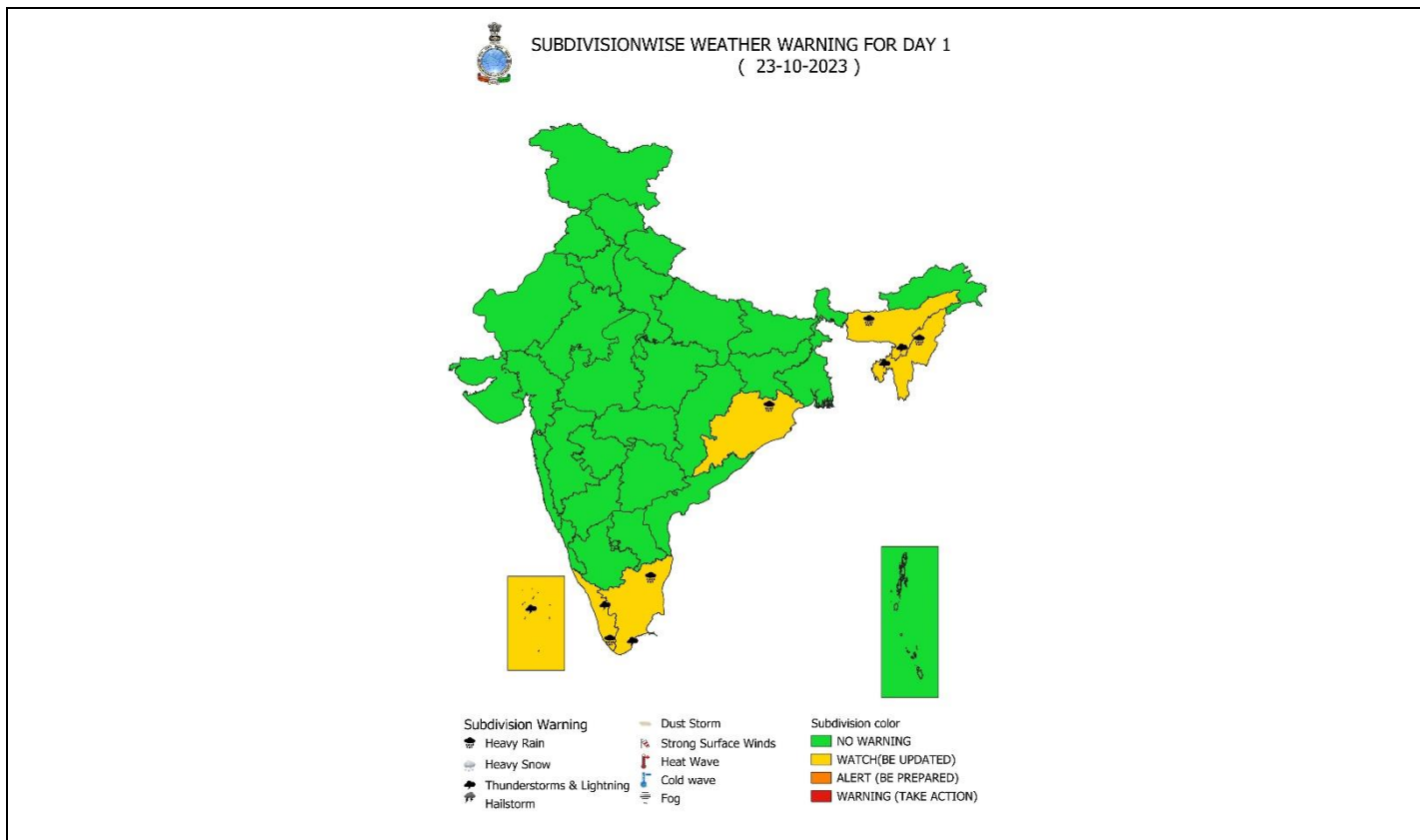
Kindly visit <https://rsmcnewdelhi.imd.gov.in/index.php?lang=en> for detailed forecast & warnings regarding the above cyclonic disturbances.

For more details kindly refer: [https://mausam.imd.gov.in/responsive/all\\_india\\_fzorcst\\_bulletin.php](https://mausam.imd.gov.in/responsive/all_india_fzorcst_bulletin.php)

**Annexure I**

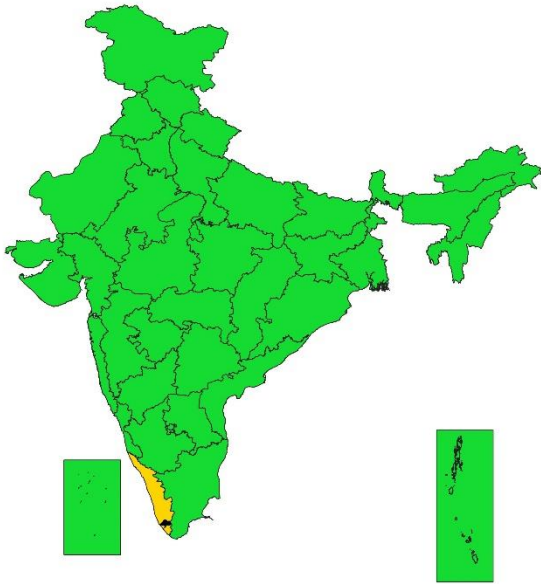
**Rainfall observations: (from 0830 hours IST of yesterday to 0830 hours IST of today, the 23<sup>rd</sup> October, 2023):**

- ❖ **Significant rainfall recorded (in cm): Kerala & Mahe:** Kurudamannil (dist Pathanamthitta) 9, Vakkad Aws (dist Malappuram) 8, Kayamkulam (dist Alapuzha) 8, Kayamkulam\_Agri (dist Alapuzha) 7, Mavelikara (dist Alapuzha) 7.
- ❖ **Heavy rainfall** occurred at isolated places over Kerala.





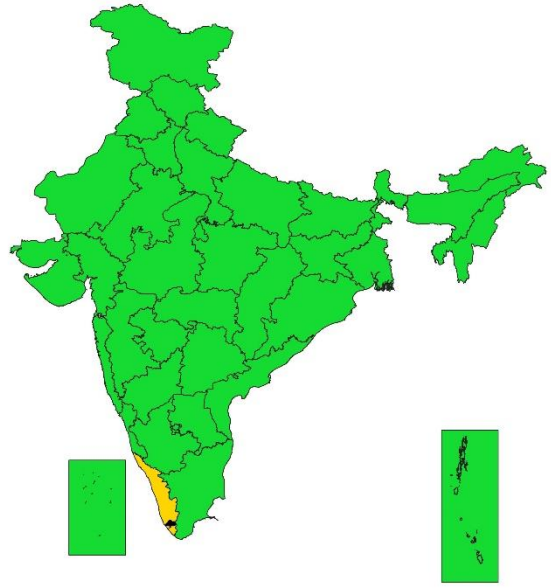
**SUBDIVISIONWISE WEATHER WARNING FOR DAY 4**  
( 26-10-2023)



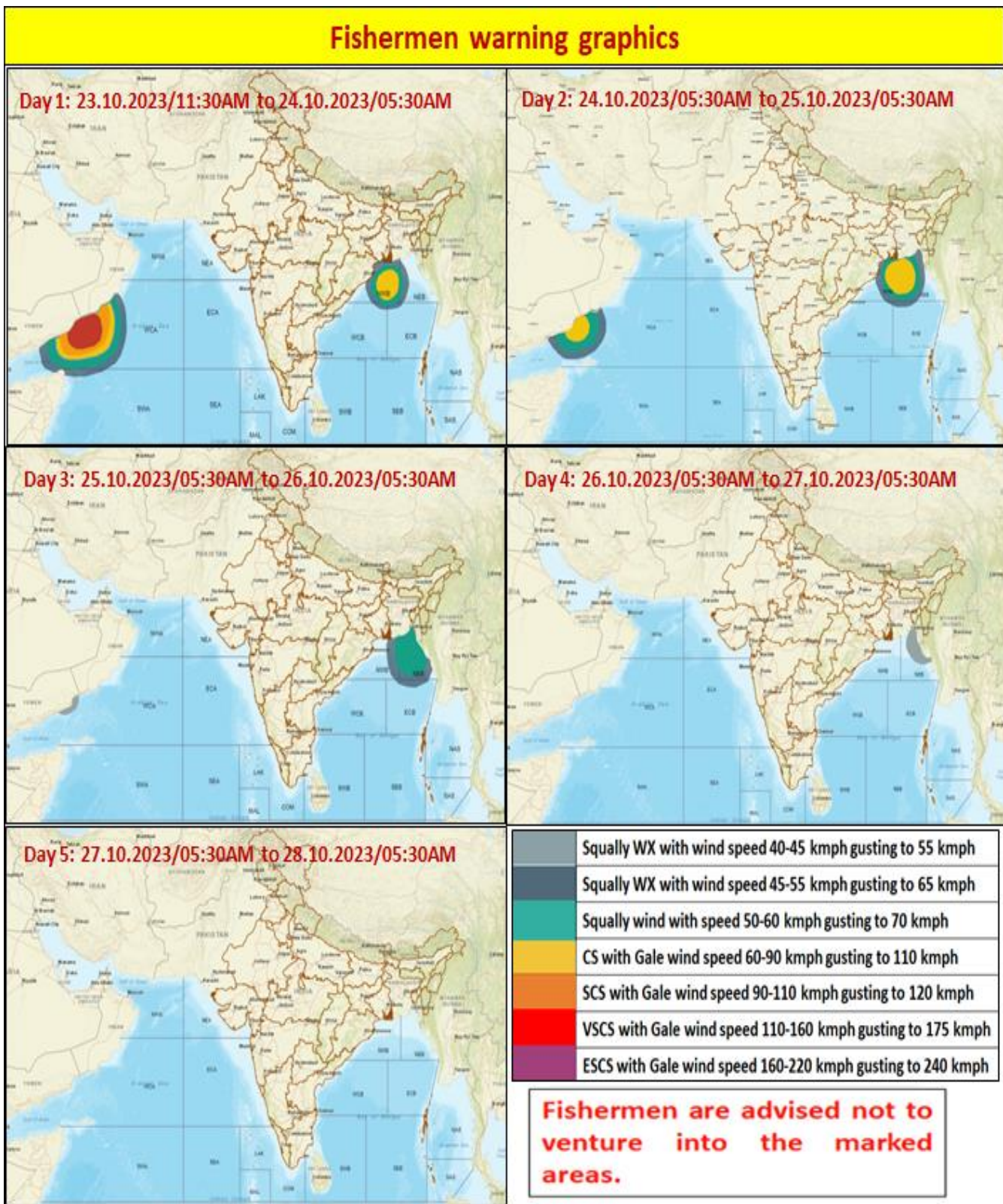
- |                            |                      |                          |
|----------------------------|----------------------|--------------------------|
| <b>Subdivision Warning</b> | Dust Storm           | <b>Subdivision color</b> |
| Heavy Rain                 | Strong Surface Winds | NO WARNING               |
| Heavy Snow                 | Heat Wave            | WATCH(BE UPDATED)        |
| Thunderstorms & Lightning  | Cold wave            | ALERT (BE PREPARED)      |
| Hailstorm                  | Fog                  | WARNING (TAKE ACTION)    |

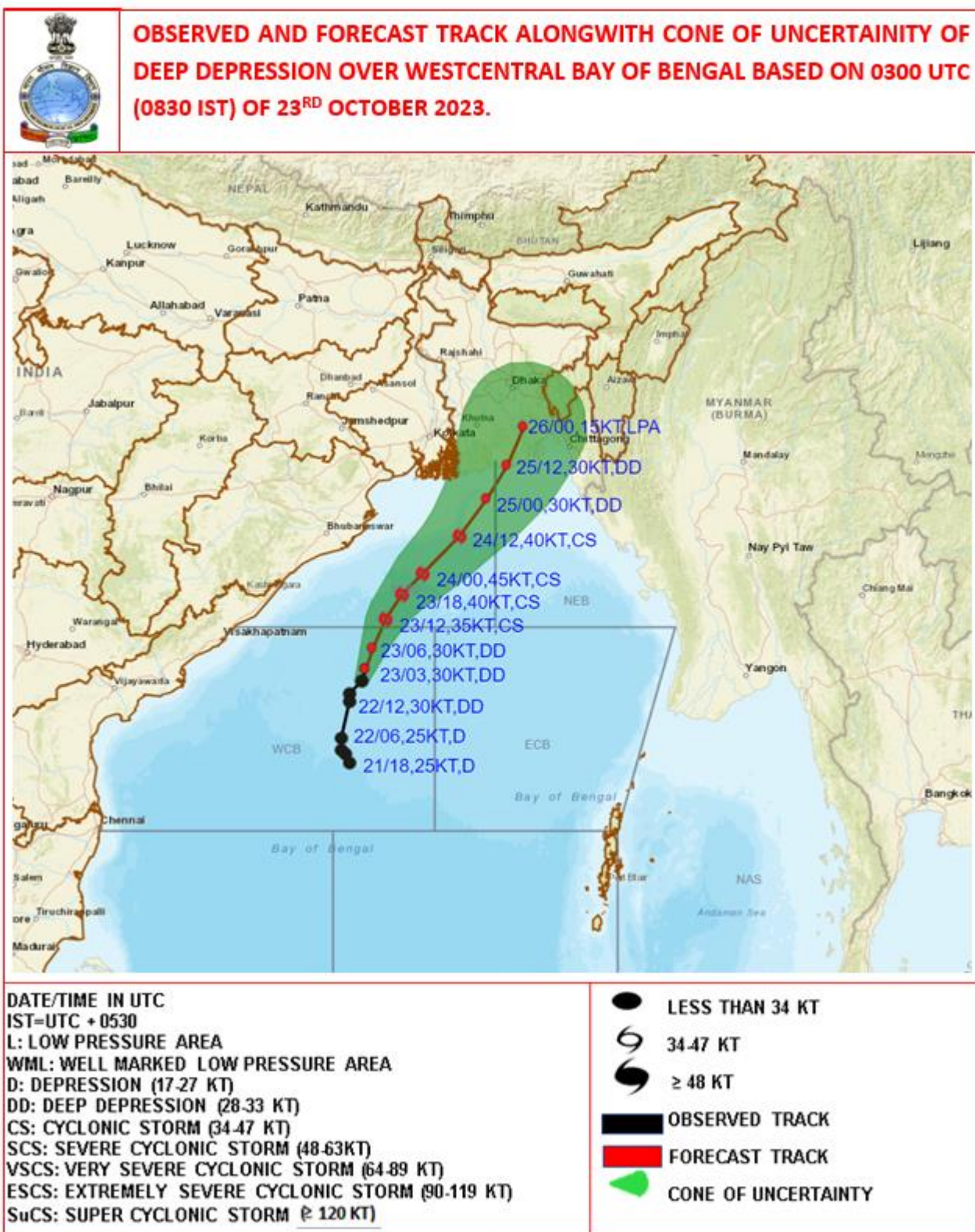


**SUBDIVISIONWISE WEATHER WARNING FOR DAY 5**  
( 27-10-2023)



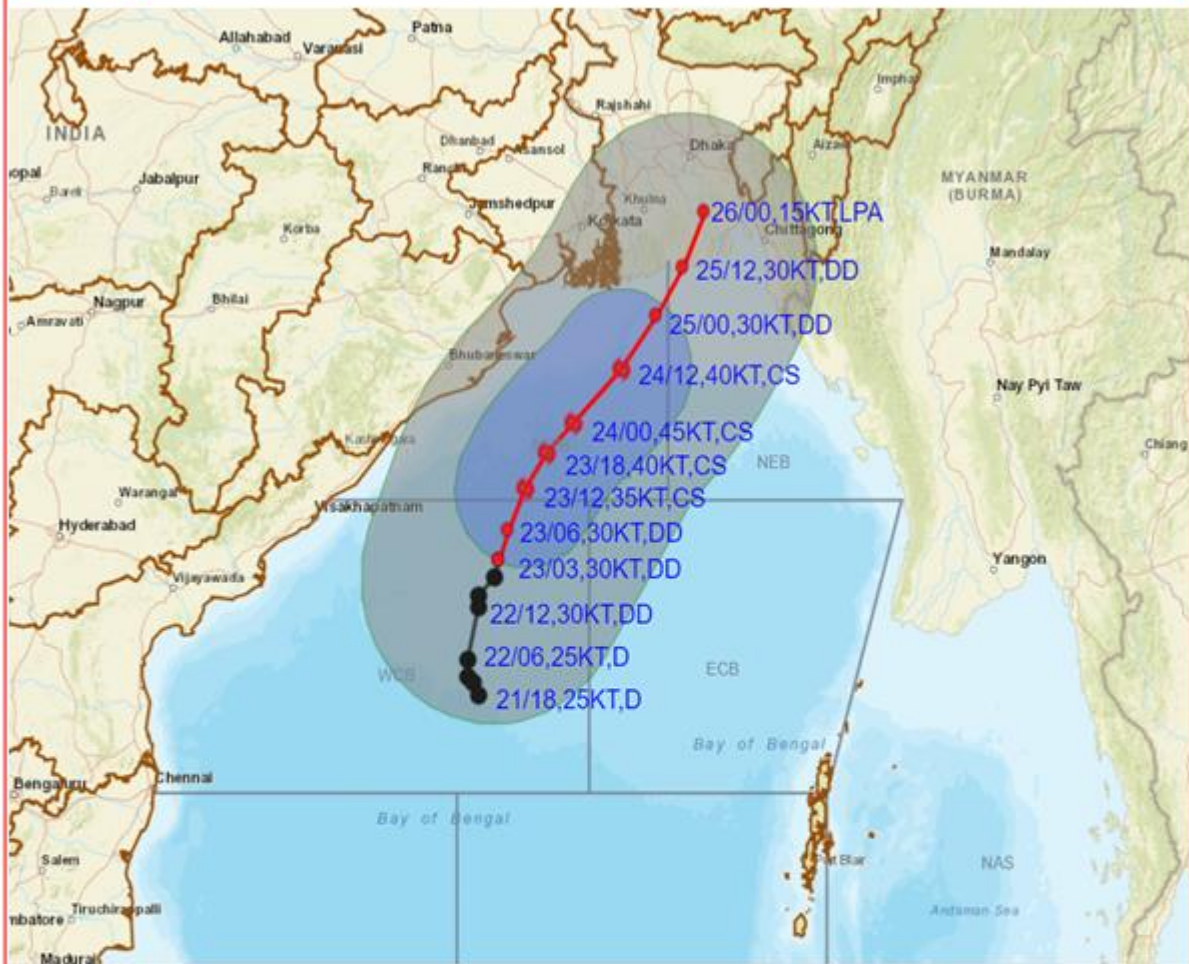
- |                            |                      |                          |
|----------------------------|----------------------|--------------------------|
| <b>Subdivision Warning</b> | Dust Storm           | <b>Subdivision color</b> |
| Heavy Rain                 | Strong Surface Winds | NO WARNING               |
| Heavy Snow                 | Heat Wave            | WATCH(BE UPDATED)        |
| Thunderstorms & Lightning  | Cold wave            | ALERT (BE PREPARED)      |
| Hailstorm                  | Fog                  | WARNING (TAKE ACTION)    |







**OBSERVED AND FORECAST TRACK ALONGWITH QUADRANT WIND DISTRIBUTION OF DEEP DEPRESSION OVER WESTCENTRAL BAY OF BENGAL BASED ON 0300 UTC (0830 IST) OF 23<sup>RD</sup> OCTOBER 2023.**



DATE/TIME IN UTC  
 IST=UTC + 0530  
 L: LOW PRESSURE AREA  
 WML: WELL MARKED LOW PRESSURE AREA  
 D: DEPRESSION (17-27 KT)  
 DD: DEEP DEPRESSION (28-33 KT)  
 CS: CYCLONIC STORM (34-47 KT)  
 SCS: SEVERE CYCLONIC STORM (48-63KT)  
 VSCS: VERY SEVERE CYCLONIC STORM (64-89 KT)  
 ESCS: EXTREMELY SEVERE CYCLONIC STORM (90-119 KT)  
 SuCS: SUPER CYCLONIC STORM (≥ 120 KT)

● LESS THAN 34 KT  
 ○ 34-47 KT  
 ⊙ ≥ 48 KT  
 — OBSERVED TRACK  
 — FORECAST TRACK  
 — CONE OF UNCERTAINTY  
 AREA OF MAXIMUM SUSTAINED WIND SPEED:  
 ■ 28-33 KT (52-61 KMPH)  
 ■ 34-49 KT (62-91 KMPH)  
 ■ 50-63 KT (92-117 KMPH)  
 ■ ≥ 64 KT (≥118 KMPH)

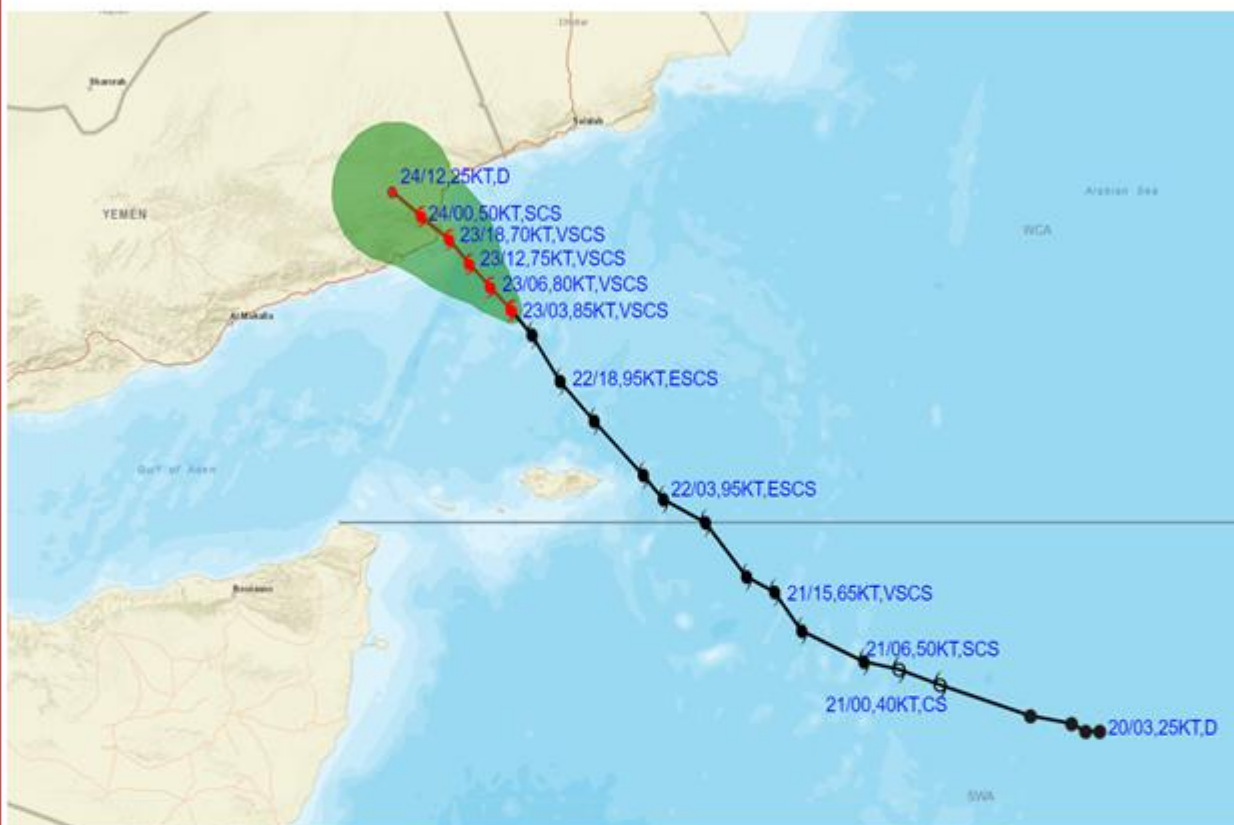
**IMPACT OVER THE SEA**

| MSW (knot/kmph) | Impact                 | Action                                 |
|-----------------|------------------------|--|
| 28-33 (52-61)   | Very rough seas        | Total suspension of fishing operations |
| 34-49 (62-91)   | High to very high seas | Total suspension of fishing operations |
| 50-63 (92-117)  | Very high seas         | Total suspension of fishing operations |
| ≥ 64 (≥118)     | Phenomenal             | Total suspension of fishing operations |





**OBSERVED AND FORECAST TRACK ALONGWITH CONE OF UNCERTAINTY OF VERY SEVERE CYCLONIC STORM "TEJ" OVER WESTCENTRAL ARABIAN SEA BASED ON 0300 UTC (0830 IST) OF 23<sup>RD</sup> OCTOBER 2023.**



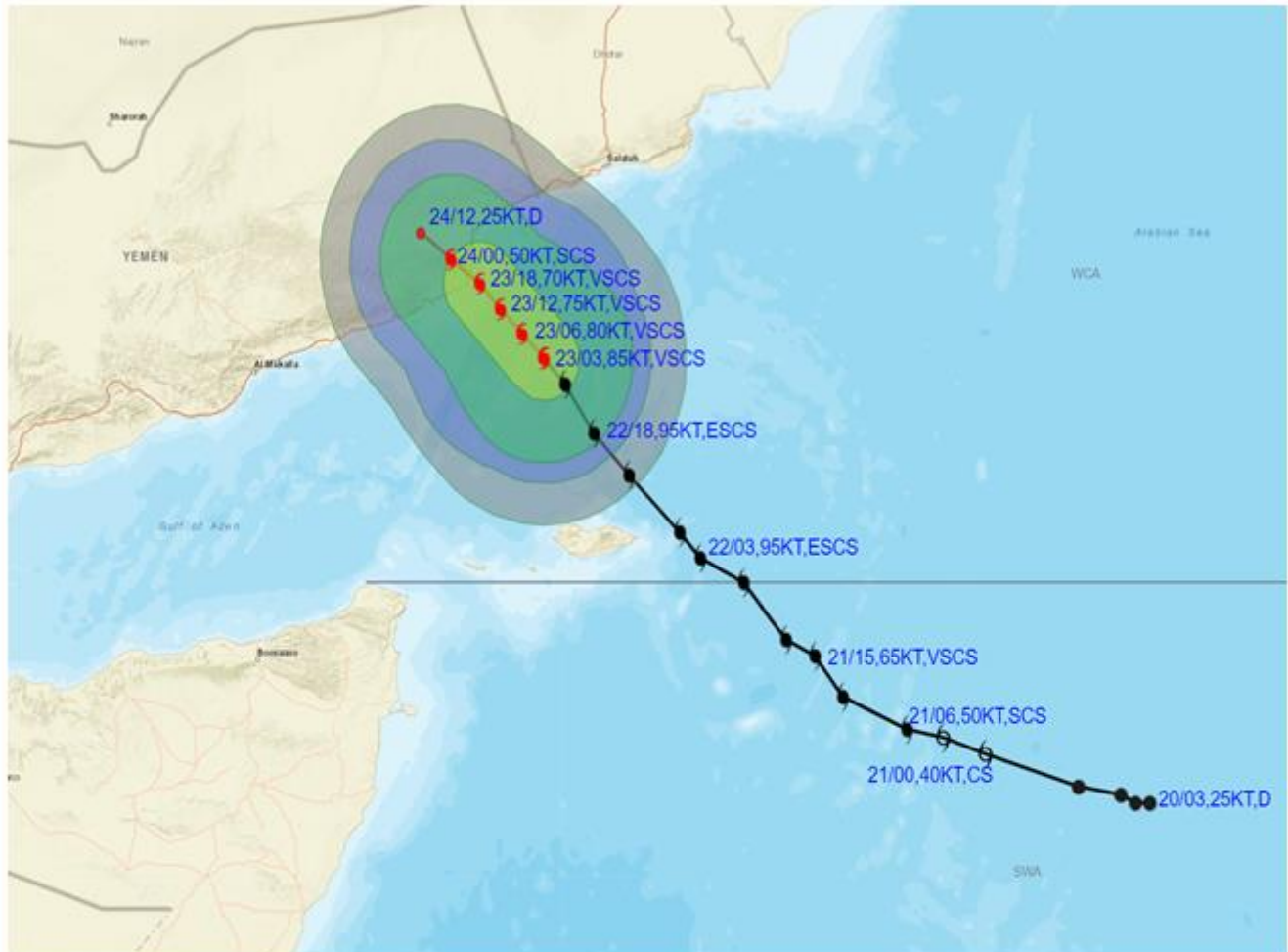
DATE/TIME IN UTC  
 IST=UTC + 0530  
 L: LOW PRESSURE AREA  
 WML: WELL MARKED LOW PRESSURE AREA  
 D: DEPRESSION (17-27 KT)  
 DD: DEEP DEPRESSION (28-33 KT)  
 CS: CYCLONIC STORM (34-47 KT)  
 SCS: SEVERE CYCLONIC STORM (48-63KT)  
 VSCS: VERY SEVERE CYCLONIC STORM (64-89 KT)  
 ESCS: EXTREMELY SEVERE CYCLONIC STORM (90-119 KT)  
 SuCS: SUPER CYCLONIC STORM ( $\geq$  120 KT)

- LESS THAN 34 KT
- 34-47 KT
- $\geq$  48 KT
- OBSERVED TRACK
- FORECAST TRACK
- CONE OF UNCERTAINTY

| Forecast | DISTANCE(KM) AND DIRECTION FROM STATIONS |          |          |            |
|----------|--|----------|----------|------------|
|          | DATE AND TIME                            | SOCOTRA  | SALALAH  | AL-GHAIDAH |
|          | 24.10.23/0000                            | 420, NNW | 270, WSW | 30, SW     |



**OBSERVED AND FORECAST TRACK ALONGWITH QUADRANT WIND DISTRIBUTION OF VERY SEVERE CYCLONIC STORM "TEJ" OVER WESTCENTRAL ARABIAN SEA BASED ON 0300 UTC (0830 IST) OF 23<sup>RD</sup> OCTOBER 2023.**



DATE/TIME IN UTC  
 IST=UTC + 0530  
 L: LOW PRESSURE AREA  
 WML: WELL MARKED LOW PRESSURE AREA  
 D: DEPRESSION (17-27 KT)  
 DD: DEEP DEPRESSION (28-33 KT)  
 CS: CYCLONIC STORM (34-47 KT)  
 SCS: SEVERE CYCLONIC STORM (48-63KT)  
 VSCS: VERY SEVERE CYCLONIC STORM (64-89 KT)  
 ESCS: EXTREMELY SEVERE CYCLONIC STORM (90-119 KT)  
 SuCS: SUPER CYCLONIC STORM (≥ 120 KT)

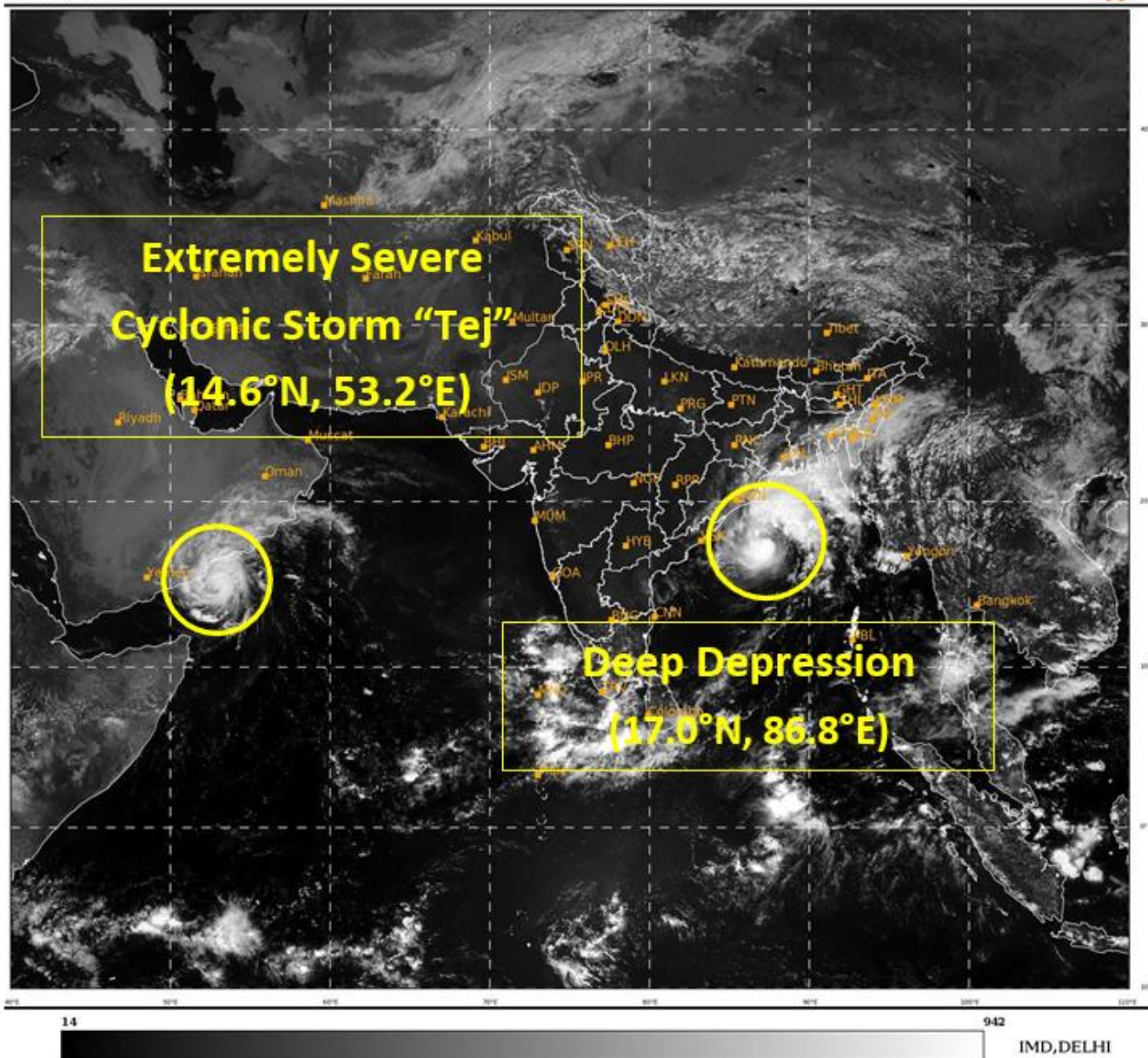
● LESS THAN 34 KT  
 ○ 34-47 KT  
 ⊙ ≥ 48 KT  
 — OBSERVED TRACK  
 — FORECAST TRACK  
 — CONE OF UNCERTAINTY  
 AREA OF MAXIMUM SUSTAINED WIND SPEED:  
 ■ 28-33 KT (52-61 KMPH)  
 ■ 34-49 KT (62-91 KMPH)  
 ■ 50-63 KT (92-117 KMPH)  
 ■ ≥ 64 KT (≥118 KMPH)

**IMPACT OVER THE SEA**

| MSW (knot/kmph) | Impact                 | Action                                 |
|-----------------|------------------------|--|
| 28-33 (52-61)   | Very rough seas        | Total suspension of fishing operations |
| 34-49 (62-91)   | High to very high seas | Total suspension of fishing operations |
| 50-63 (92-117)  | Very high seas         | Total suspension of fishing operations |
| ≥ 64 (≥118)     | Phenomenal             | Total suspension of fishing operations |

SAT : INSAT-3D IMG  
Visible Count 0.65 um  
L1C Mercator

23-10-2023/(0630 to 0656) GMT  
23-10-2023/(1200 to 1226) IST



**Legends:**

- ❖ **Heavy Rain:** 64.5 to 115.5 mm; **Very Heavy Rain:** 115.6 to 204.4 mm; **Extremely Heavy Rain:** >204.4mm.
- ❖ **Obsy:** Observatory; **AWS:** Automatic Weather Station; **dist:** District; **NH:** National Highway; **KVK:** Krishi Vigyan Kendra; **DVC:** Damodar Valley Corporation
- ❖ **Region wise classification of meteorological Sub-Divisions:**
  - **Northwest India:** Western Himalayan Region (Jammu-Kashmir-Ladakh-Gilgit-Baltistan-Muzaffarabad, Himachal Pradesh and Uttarakhand); Punjab, Haryana-Chandigarh-Delhi; West Uttar Pradesh, East Uttar Pradesh, West Rajasthan and East Rajasthan.
  - **Central India:** West Madhya Pradesh, East Madhya Pradesh, Vidarbha and Chhattisgarh.
  - **East India:** Bihar, Jharkhand, Sub-Himalaya West Bengal & Sikkim; Gangetic West Bengal, Odisha and Andaman & Nicobar Islands.
  - **Northeast India:** Arunachal Pradesh, Assam & Meghalaya and Nagaland, Manipur, Mizoram & Tripura.
  - **West India:** Gujarat Region, Saurashtra & Kutch, Konkan & Goa, Madhya Maharashtra and Marathwada.
  - **South India:** Coastal Andhra Pradesh & Yanam, Telangana, Rayalaseema, Coastal Karnataka, North Interior Karnataka, South Interior Karnataka, Kerala & Mahe, Tamil Nadu, Puducherry & Karaikal and Lakshadweep.

| SPATIAL DISTRIBUTION      |                                      |            |                               |
|---------------------------|--------------------------------------|------------|-------------------------------|
| (% of Stations reporting) |                                      |            |                               |
| % Stations                | Category                             | % Stations | Category                      |
| 76-100                    | Widespread (WS/ Most Places)         | 26-50      | Scattered (SCT/ A Few Places) |
| 51-75                     | Fairly Widespread (FWS/ Many Places) | 1-25       | Isolated (ISOL)               |

|                           |                      |                       |
|---------------------------|----------------------|-----------------------|
| Subdivision Warning       | Dust Storm           | Subdivision color     |
| Heavy Rain                | Strong Surface Winds | NO WARNING            |
| Heavy Snow                | Heat Wave            | WATCH (BE UPDATED)    |
| Thunderstorms & Lightning | Cold wave            | ALERT (BE PREPARED)   |
| Hailstorm                 | Fog                  | WARNING (TAKE ACTION) |

| Probabilistic Forecast |                               |
|------------------------|-------------------------------|
| Terms                  | Probability of Occurrence (%) |
| Unlikely               | < 25                          |
| Likely                 | 25 - 50                       |
| Very Likely            | 50 - 75                       |
| Most Likely            | > 75                          |

| Flash Flood Risk |                             |
|------------------|-----------------------------|
|                  | High Risk (Take Action)     |
|                  | Moderate Risk (Be Prepared) |
|                  | Low Risk (Be Updated)       |