



**Government of India
Ministry of Earth Sciences
India Meteorological Department**

**Press Release
Date: 24th October, 2023
Time of Issue: 1300 hours IST**

Subject: (i) Very Severe Cyclonic Storm “Hphoon” (pronounced as Hphoon) over Northwest & adjoining Northeast Bay of Bengal. It is likely to weaken gradually and cross Bangladesh coast between Khepupara and Chittagong around evening of 25th October as a cyclonic storm with wind speed of 65 to 75 kmph gusting to 85 kmph.

(ii) Severe Cyclonic Storm over coastal Yemen likely to weaken Cyclonic Storm during next 03 hours and into a Deep Depression during next 06 hours.

Rainfall recorded during past 24 hours till 0830 hours IST of today (24th Oct. 2023): (Annexure I)

Significant Weather features:

- ❖ Yesterday’s Deep Depression over Westcentral Bay of Bengal intensified into **Cyclonic Storm “Hphoon” (pronounced as Hphoon)** at 1730 hours IST of yesterday over the same region, into a **Severe Cyclonic Storm** at 0230 hours IST of today, the 24th October over Northwest Bay of Bengal. It further intensified into a **Very Severe Cyclonic Storm** and lay centered at 0830 hours IST of 24th October over Northwest & adjoining Northeast Bay of Bengal, near latitude 20.0°N and longitude 89.5°E, about 290 km east of Paradip (Odisha), 270 km southeast of Digha (West Bengal), 230 km south-southwest of Khepupara (Bangladesh) and 350 km southwest of Chittagong (Bangladesh). It is very likely to maintain its intensity of **Very Severe Cyclonic Storm** for a few hours. Thereafter, it is likely to weaken gradually while moving northeastwards and cross Bangladesh coast between Khepupara and Chittagong around evening of 25th October as a **Cyclonic Storm** with wind speed of 65 to 75 kmph gusting to 85 kmph. **(Annexure II & III).**
- ❖ Yesterday’s **Very Severe Cyclonic Storm** over Westcentral Arabian Sea crossed Yemen coast near Lat. 15.9°N and Long. 52.15°E close to the south of Al Ghaidah between 0230 hours IST and 0330 hours IST of today and weakened into a **Severe Cyclonic Storm** at 0530 hours IST of today over the same region. It moved west-northwestward moved with a speed of 7 kmph during past 6 hours and lay centered at 0830 hours IST of today, the 24th October, over the same region, near latitude 16.0°N and longitude 51.8°E, about 30 km west-southwest of Al Ghaidah (Yemen) and 270 km west-southwest of Salalah (Oman). It is very likely to move further west-northwestwards and weaken into a Cyclonic Storm during next 3 hours and into a Depression during subsequent 06 hours. **(Annexure III & IV).**

Weather forecast & warnings for next 5 days: (Graphics in Annexure V)

- ❖ **South India:** Light to moderate rainfall at some places with isolated **heavy rainfall** with thunderstorm & lightning very likely over Kerala and Tamil Nadu on 24th October.

Weather warnings in association with the Very Severe Cyclonic Storm “Hphoon” (pronounced as Hphoon) over Northwest & adjoining Northeast Bay of Bengal:

(i) Rainfall Warning (Graphics in Annexure V)

- ❖ **Manipur, Mizoram & Tripura and south Assam & Meghalaya:** Light to moderate rainfall is very likely at most places with isolated heavy rainfall over Mizoram and Tripura on 24th and 25th and over south Assam on 24th October. Light to moderate rainfall is likely at many places over Mizoram and Tripura on 26th October. Light to moderate rainfall is very likely at many places over Nagaland and Manipur during 24-26th October and east Arunachal Pradesh on 25th & 26th October.

(ii) Wind warning

- ❖ **Northeast Bay of Bengal:** Gale wind speed reaching 115-125 kmph gusting to 135 kmph is prevailing. It is likely to become 120-130 kmph gusting 140 kmph during next 6 hours. It would decrease gradually thereafter becoming Gale wind speed reaching 100-110 kmph gusting to 120 kmph by 24th midnight, and 65-75 kmph gusting to 85 kmph by 25th evening and would decrease thereafter.
- ❖ **Northwest Bay of Bengal:** Gale wind speed reaching 115-125 kmph gusting to 135 kmph is prevailing. It is likely to become 120-130 kmph gusting 140 kmph during next 6 hours. It would decrease gradually thereafter becoming Gale wind speed reaching 80-90 kmph gusting to 100 kmph by 24th midnight, and Squally wind speed reaching 50-60 kmph gusting to 70 kmph by 25th evening and would decrease thereafter.
- ❖ **Adjoining Westcentral Bay of Bengal:** Squally wind speed reaching 50-60 kmph gusting to 70 kmph is prevailing and would gradually decrease becoming 30-40 kmph gusting to 50 kmph from 24th evening.
- ❖ **Adjoining eastcentral Bay of Bengal:** Squally wind speed reaching 50-60 kmph gusting to 70 kmph is prevailing and would gradually decrease becoming 40-50 kmph gusting to 60 kmph from 24th evening.
- ❖ **Along & off Odisha, West Bengal, Bangladesh and north Myanmar coasts:** Squally wind speed reaching 40-50 kmph gusting to 60 kmph is likely prevailing along & off Odisha coast on 24th. Squally wind speed reaching 40-50 kmph gusting to 60 kmph is prevailing along & off West Bengal, Bangladesh and North Myanmar coasts from 24th morning. It would gradually increase becoming 65-75 kmph gusting to 85 kmph along & off Bangladesh coast, 55-65 kmph gusting to 75 kmph along & off north Myanmar coast and 45-55 kmph gusting to 65 kmph along & off west Bengal coast on 25th October.
- ❖ **Mizoram, Tripura, south Assam and Manipur:** Squally wind speed reaching 40-50 kmph gusting to 60 kmph is likely to prevail over Mizoram and Tripura and Strong wind speed reaching 30-40 kmph gusting to 50 kmph over south Assam & Manipur on 25th October.

(iii) Fishermen Warning (Graphics in Annexure VI): Fishermen are advised not to venture into

- ❖ **North Bay of Bengal and along & off Odisha, West Bengal, Bangladesh and north Myanmar coasts** during 24th to 25th October.
- ❖ **Adjoining areas of Westcentral till 24th October evening and Eastcentral Bay of Bengal till 25th October morning.**

Weather warnings in association with the Severe Cyclonic Storm over coastal Yemen:

(i) Wind warning:

❖ **Westcentral Arabian Sea:** Gale wind speed reaching 90-100 kmph gusting to 110 kmph is prevailing and likely to decrease rapidly becoming 70-80 kmph gusting to 90 kmph from noon of 24th October and decrease gradually becoming squally wind speed reaching 30-40 gusting to 50 kmph from evening of 24th October.

(ii) **Fishermen Warning (Graphics in Annexure VI):** Fishermen are advised not to venture into Westcentral Arabian Sea till night of 24th October.

No significant weather likely over rest parts of the country.

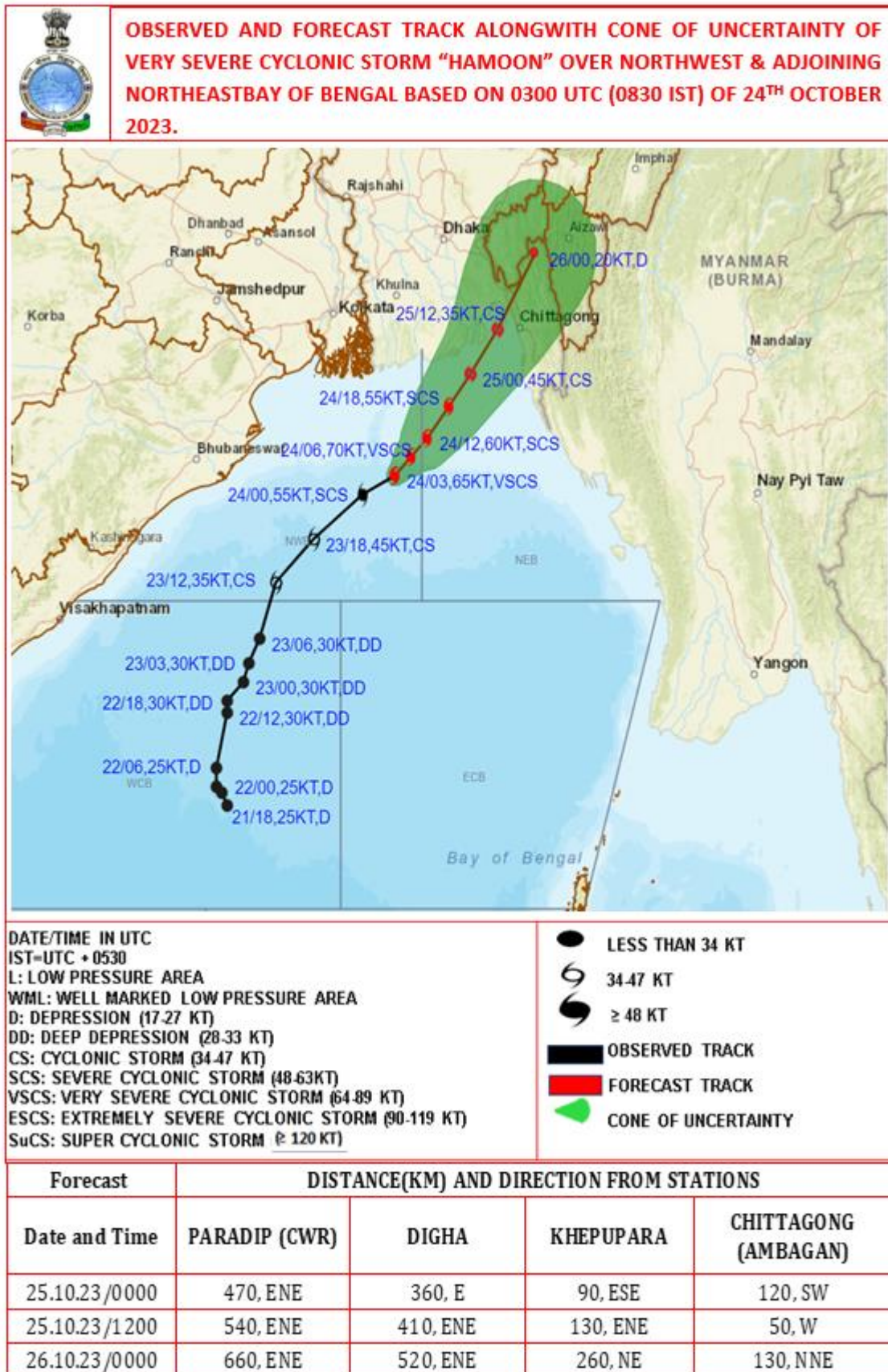
Kindly visit <https://rsmcnewdelhi.imd.gov.in/index.php?lang=en> for detailed forecast & warnings regarding the above cyclonic disturbances.

For more details kindly refer: https://mausam.imd.gov.in/responsive/all_india_forcast_bulletin.php

Annexure I

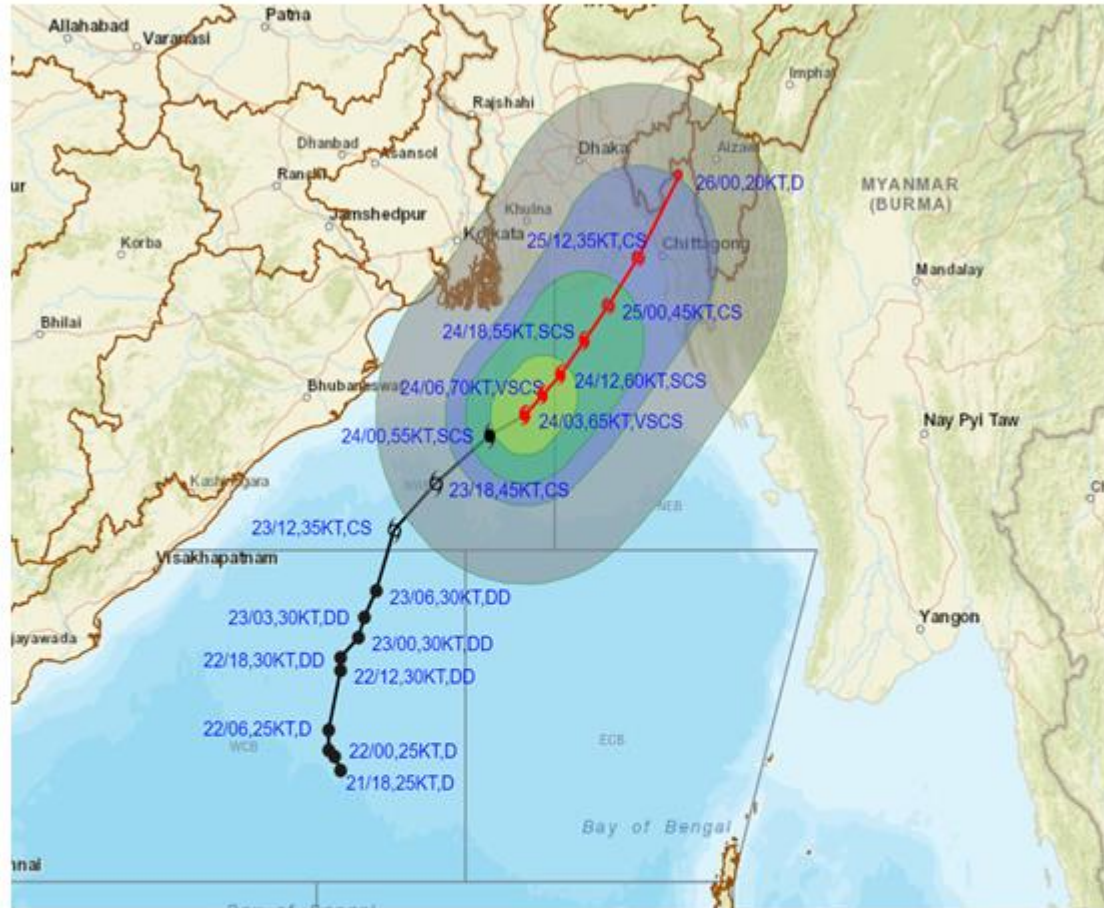
Rainfall observations: (from 0830 hours IST of yesterday to 0830 hours IST of today, the 24th October, 2023):

- ❖ **Significant rainfall recorded (in cm): Kerala & Mahe:** Chavara Aws (dist Kollam) 12, Mannarkkad (dist Palakkad) 9, Paripalli Aws (dist Kollam) 9, Choondy Aws (dist Ernakulam) 8, Mankara Aws (dist Palakkad) 8, Pirappancode Aws (dist Thiruvananthapuram) 7, Haripad (dist Alapuzha) 7, Kurudamannil (dist Pathanamthitta) 7, Neyyattinkara (dist Thiruvananthapuram) 7, Punalur (dist Kollam) 6, North Paravur Aws (dist Ernakulam) 6; **Tamil Nadu:** Watrap (dist Virudhunagar) 10, Srivilliputhur (dist Virudhunagar) 7, Karuppanadhi Dam (dist Tenkasi) 6.
- ❖ **Heavy to Very Heavy rainfall recorded** at isolated places over Kerala and **Heavy rainfall** at isolated places over Tamil Nadu.





OBSERVED AND FORECAST TRACK ALONGWITH QUADRANT WIND DISTRIBUTION OF VERY SEVERE CYCLONIC STORM "HAMOON" OVER NORTHWEST & ADJOINING NORTHEASTBAY OF BENGAL BASED ON 0300 UTC (0830 IST) OF 24TH OCTOBER 2023.



DATE/TIME IN UTC
 IST=UTC + 0530
 L: LOW PRESSURE AREA
 WML: WELL MARKED LOW PRESSURE AREA
 D: DEPRESSION (17-27 KT)
 DD: DEEP DEPRESSION (28-33 KT)
 CS: CYCLONIC STORM (34-47 KT)
 SCS: SEVERE CYCLONIC STORM (48-63KT)
 VSCS: VERY SEVERE CYCLONIC STORM (64-89 KT)
 ESCS: EXTREMELY SEVERE CYCLONIC STORM (90-119 KT)
 SuCS: SUPER CYCLONIC STORM (≥20 KT)

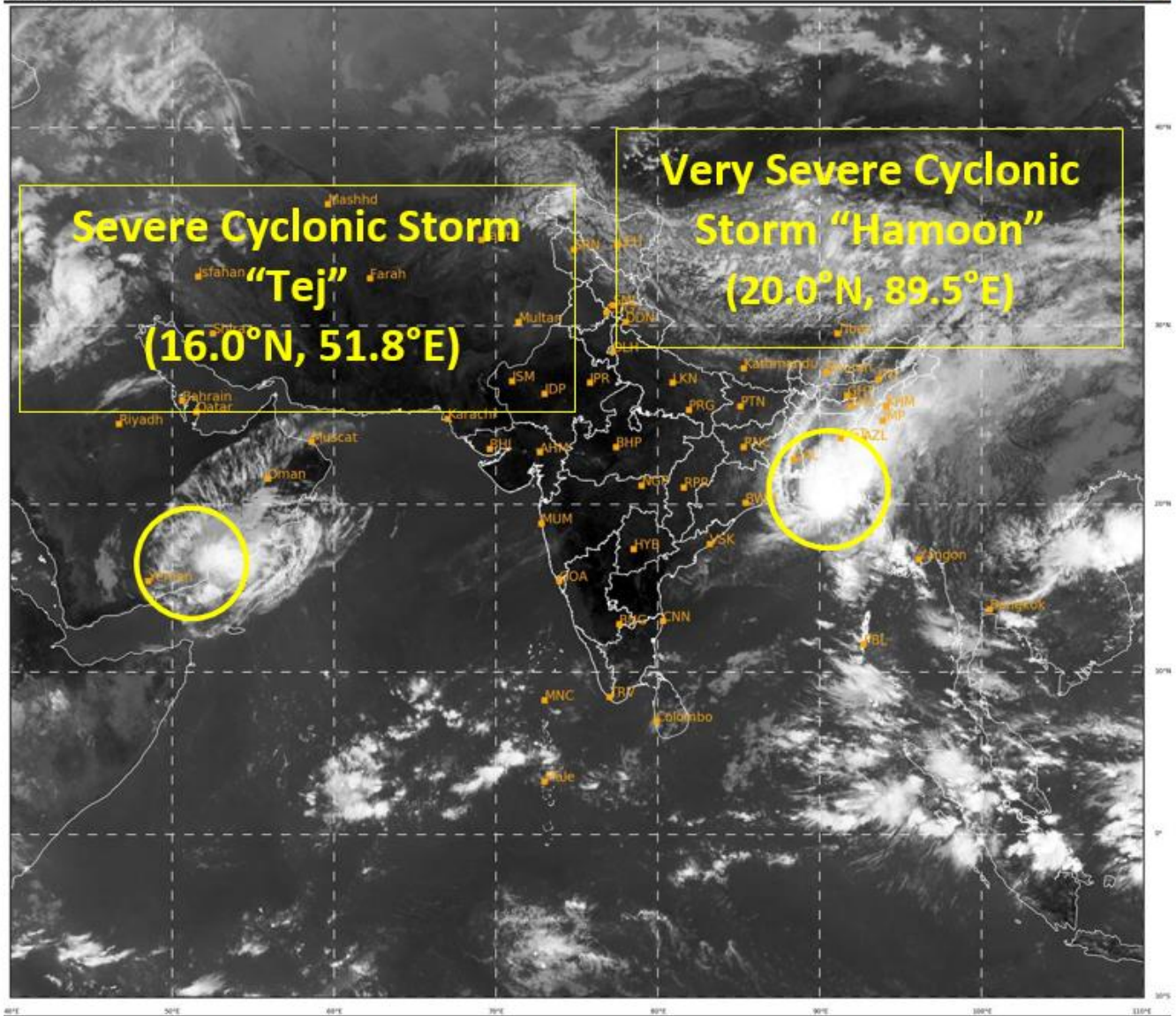
● LESS THAN 34 KT
 ○ 34-47 KT
 ● ≥ 48 KT
 — OBSERVED TRACK
 — FORECAST TRACK
 — CONE OF UNCERTAINTY
 AREA OF MAXIMUM SUSTAINED WIND SPEED:
 ■ 28-33 KT (52-61 KMPH)
 ■ 34-49 KT (62-91 KMPH)
 ■ 50-63 KT (92-117 KMPH)
 ■ ≥ 64 KT (≥118 KMPH)

IMPACT OVER THE SEA

MSW (knot/kmph)	Impact	Action
28-33 (52-61)	Very rough seas	Total suspension of fishing operations
34-49 (62-91)	High to very high seas	Total suspension of fishing operations
50-63 (92-117)	Very high seas	Total suspension of fishing operations
≥ 64 (≥118)	Phenomenal	Total suspension of fishing operations

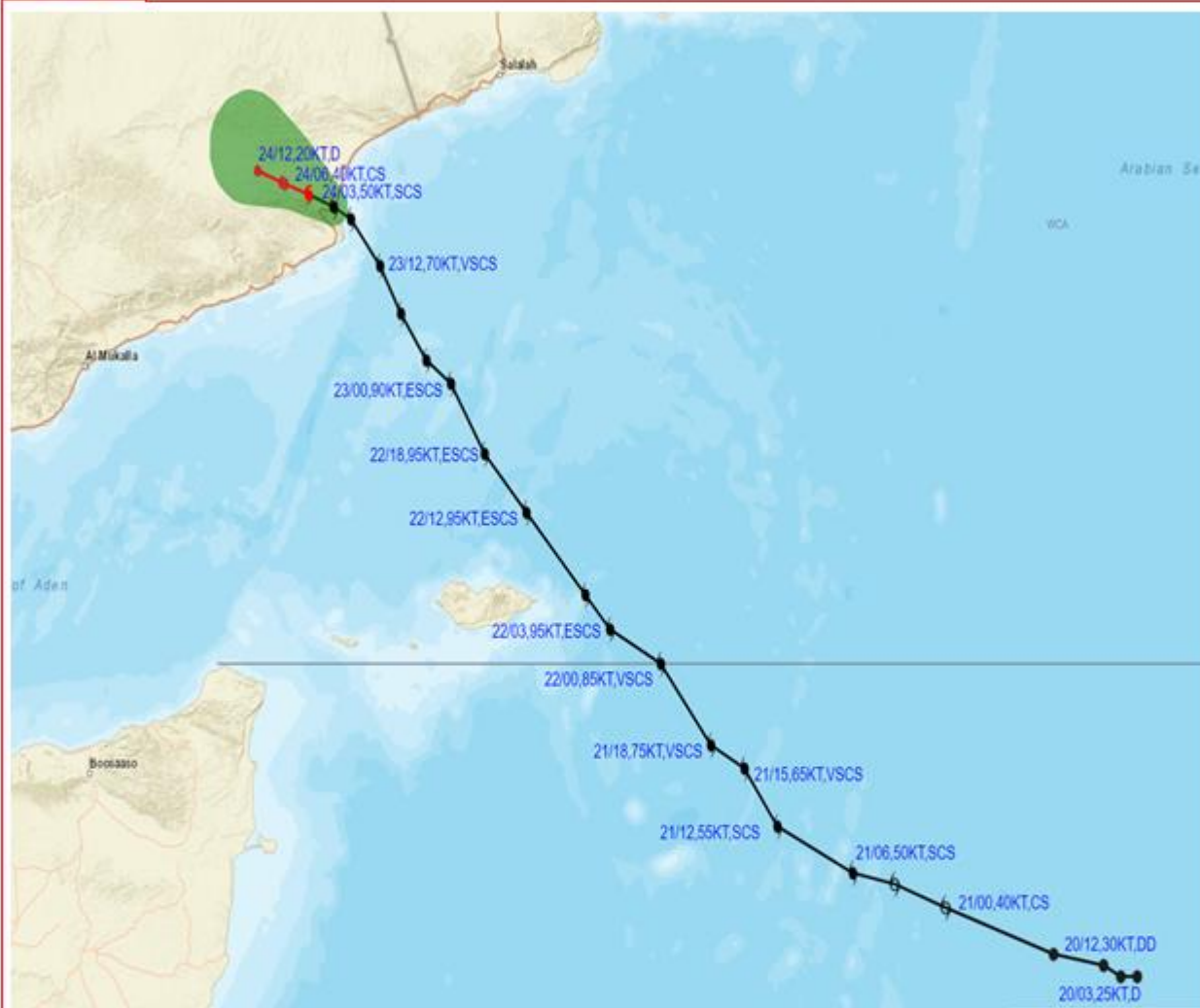
SAT : INSAT-3D IMG
IMG_TIR1 10.8 um
LIC Mercator

24-10-2023/(0530 to 0557) GMT
24-10-2023/(1100 to 1127) IST





OBSERVED AND FORECAST TRACK ALONGWITH CONE OF UNCERTAINTY OF SEVERE CYCLONIC STORM "TEJ" OVER COASTAL YEMEN BASED ON 0300 UTC (0830 IST) OF 24TH OCTOBER 2023.

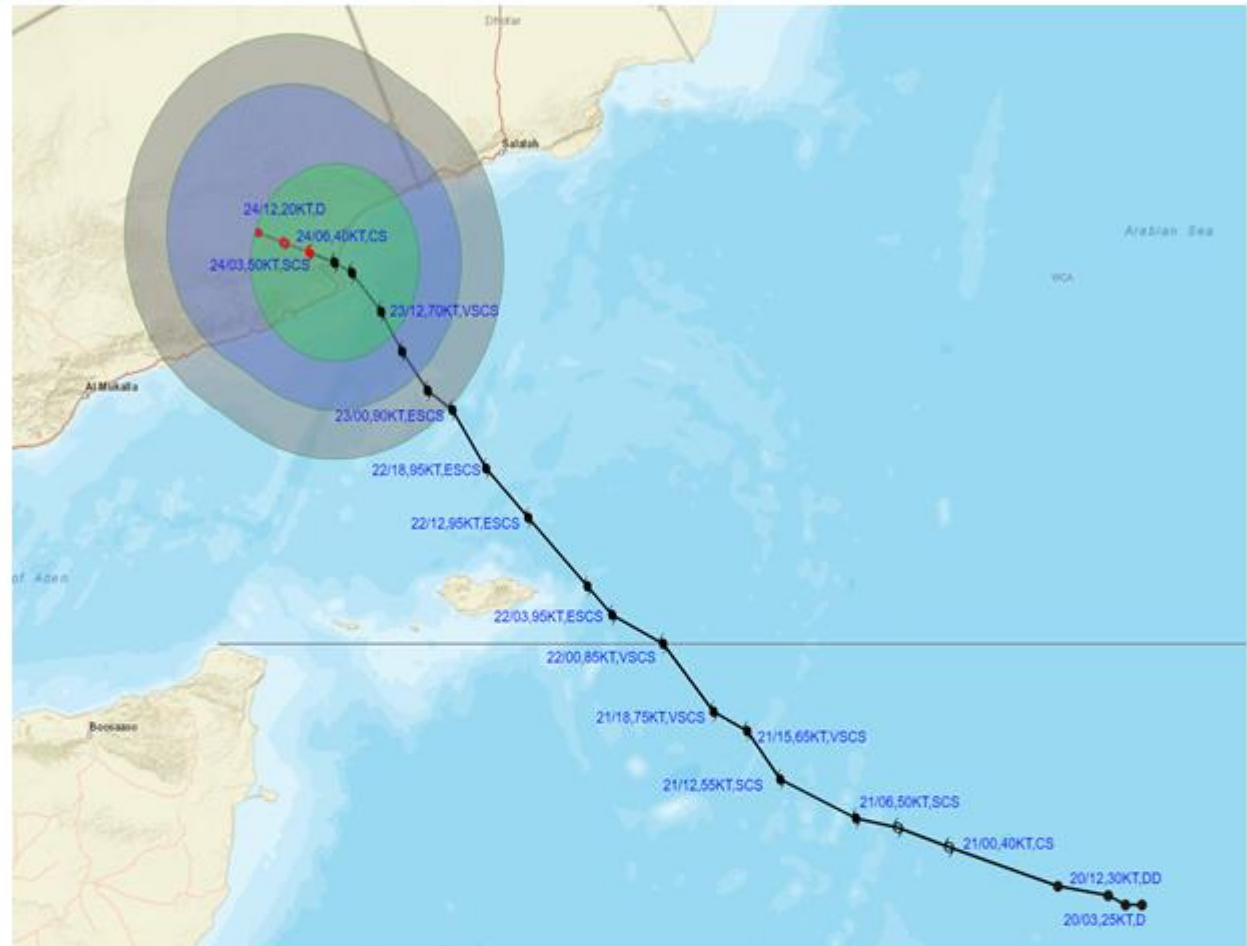


DATE/TIME IN UTC
 IST=UTC + 0530
 L: LOW PRESSURE AREA
 WML: WELL MARKED LOW PRESSURE AREA
 D: DEPRESSION (17-27 KT)
 DD: DEEP DEPRESSION (28-33 KT)
 CS: CYCLONIC STORM (34-47 KT)
 SCS: SEVERE CYCLONIC STORM (48-63KT)
 VSCS: VERY SEVERE CYCLONIC STORM (64-89 KT)
 ESCS: EXTREMELY SEVERE CYCLONIC STORM (90-119 KT)
 SuCS: SUPER CYCLONIC STORM (≥ 120 KT)

- LESS THAN 34 KT
- 34-47 KT
- ≥ 48 KT
- OBSERVED TRACK
- FORECAST TRACK
- CONE OF UNCERTAINTY



OBSERVED AND FORECAST TRACK ALONGWITH QUADRANT WIND DISTRIBUTION OF SEVERE CYCLONIC STORM "TEJ" OVER COASTAL YEMEN BASED ON 0300 UTC (0830 IST) OF 24TH OCTOBER 2023.

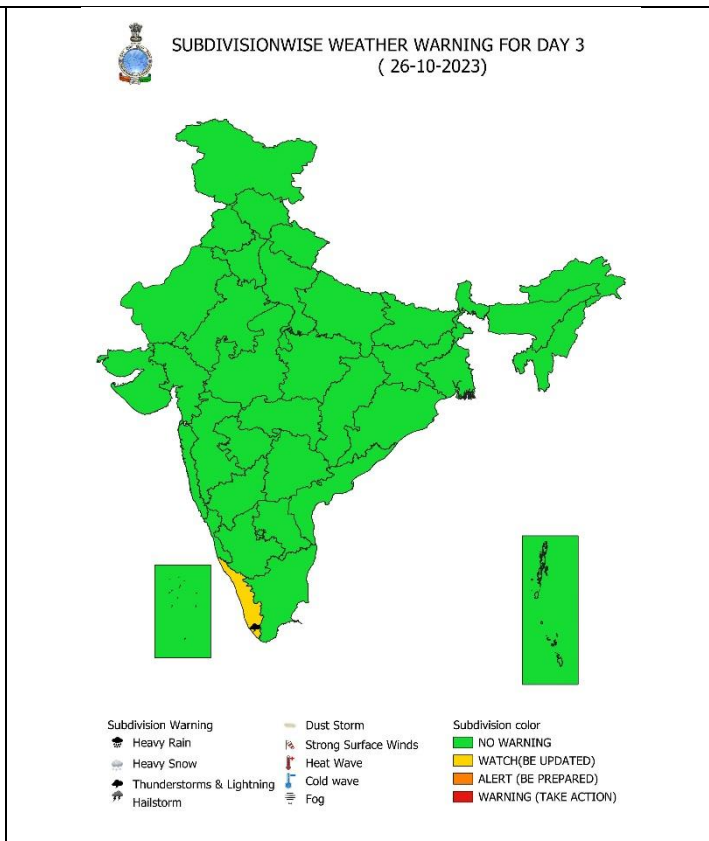
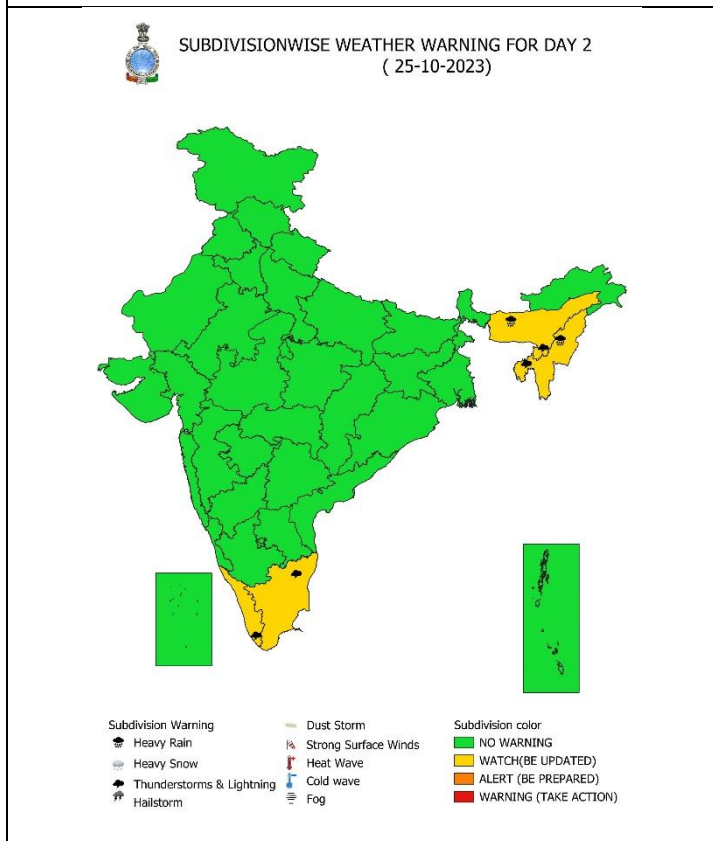
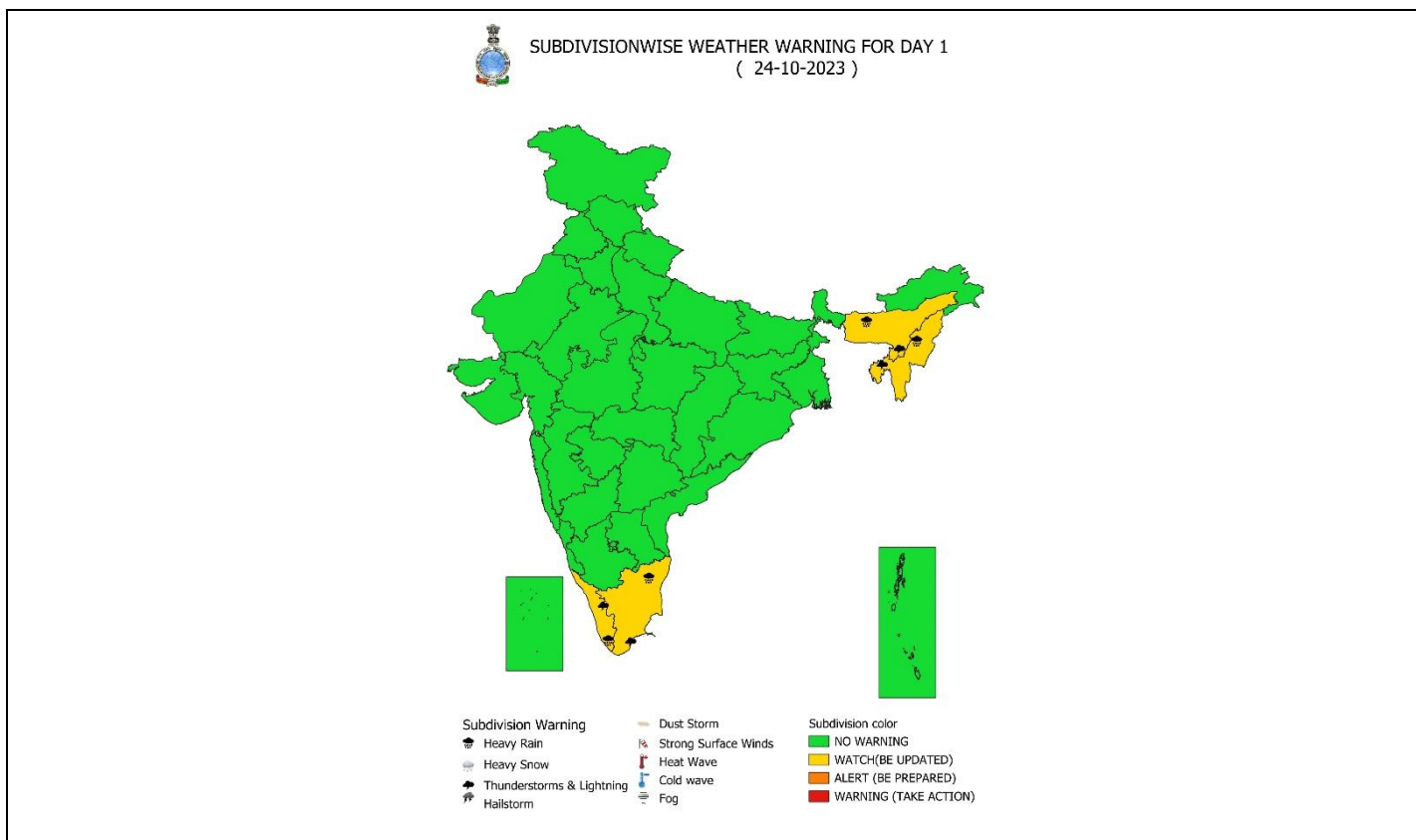


DATE/TIME IN UTC
 IST=UTC + 0530
 L: LOW PRESSURE AREA
 WML: WELL MARKED LOW PRESSURE AREA
 D: DEPRESSION (17-27 KT)
 DD: DEEP DEPRESSION (28-33 KT)
 CS: CYCLONIC STORM (34-47 KT)
 SCS: SEVERE CYCLONIC STORM (48-63KT)
 VSCS: VERY SEVERE CYCLONIC STORM (64-89 KT)
 ESCS: EXTREMELY SEVERE CYCLONIC STORM (90-119 KT)
 SuCS: SUPER CYCLONIC STORM (≥ 120 KT)

● LESS THAN 34 KT
 ○ 34-47 KT
 ● ≥ 48 KT
 — OBSERVED TRACK
 — FORECAST TRACK
 — CONE OF UNCERTAINTY
 AREA OF MAXIMUM SUSTAINED WIND SPEED:
 28-33 KT (52-61 KMPH)
 34-49 KT (62-91 KMPH)
 50-63 KT (92-117 KMPH)
 ≥ 64 KT (≥118 KMPH)

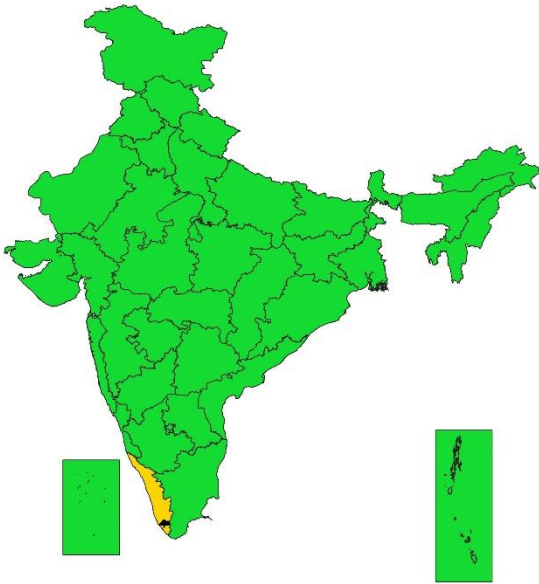
IMPACT OVER THE SEA

MSW (knot/kmph)	Impact	Action
28-33 (52-61)	Very rough seas	Total suspension of fishing operations
34-49 (62-91)	High to very high seas	Total suspension of fishing operations
50-63 (92-117)	Very high seas	Total suspension of fishing operations
≥ 64 (≥118)	Phenomenal	Total suspension of fishing operations





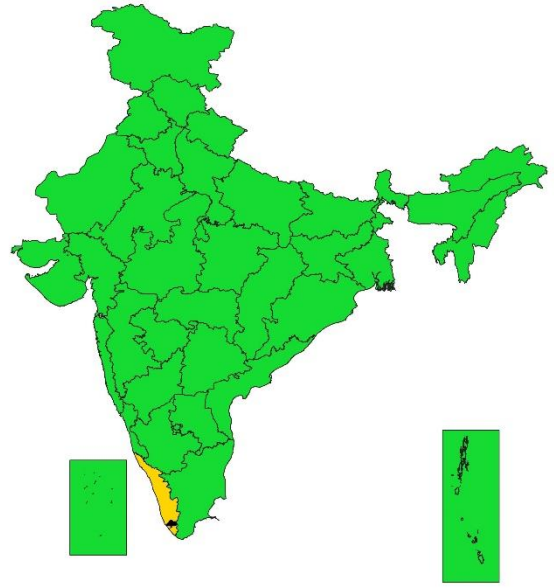
**SUBDIVISIONWISE WEATHER WARNING FOR DAY 4
(27-10-2023)**



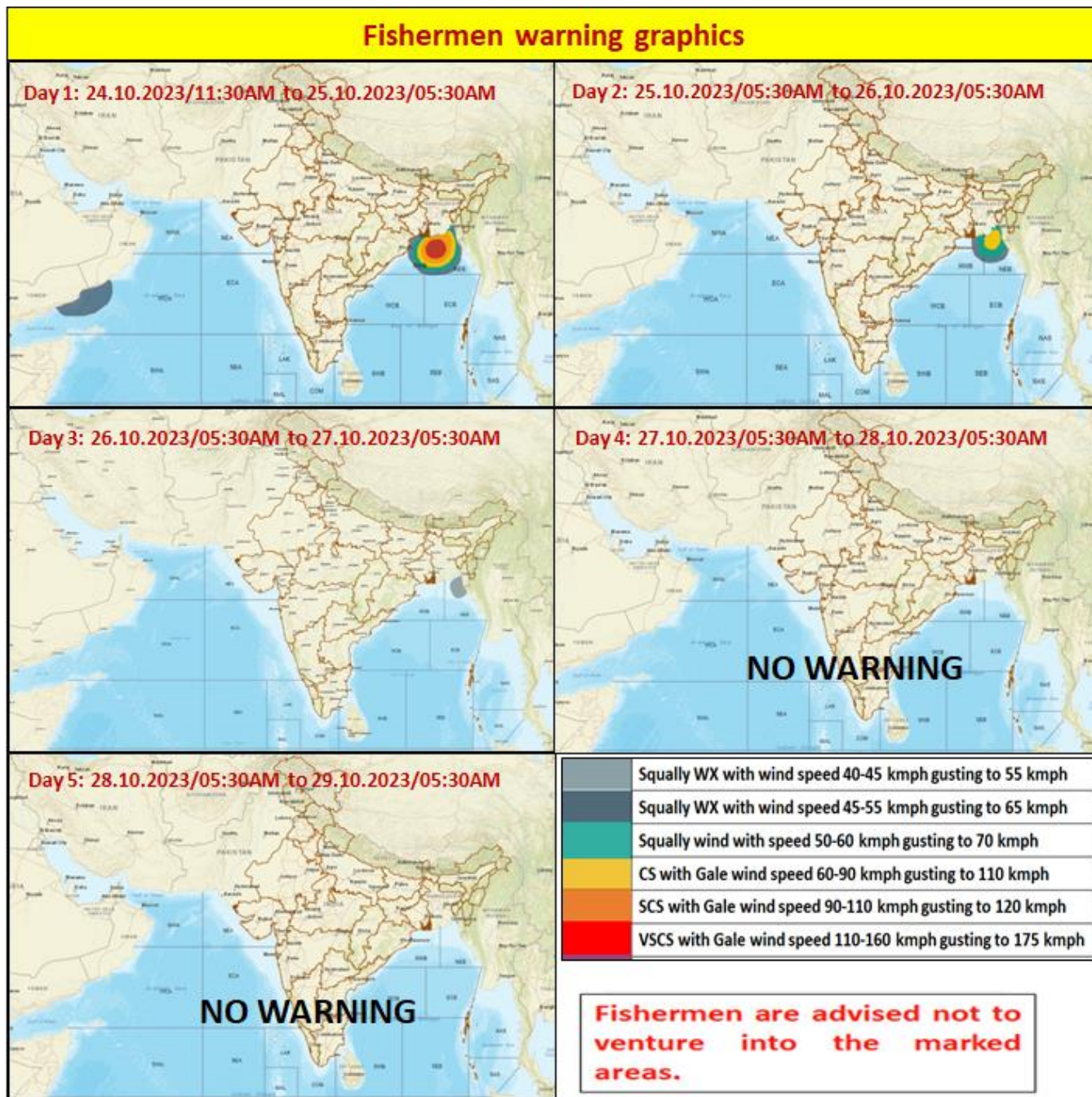
- | | | |
|----------------------------|----------------------|--------------------------|
| Subdivision Warning | Dust Storm | Subdivision color |
| Heavy Rain | Strong Surface Winds | NO WARNING |
| Heavy Snow | Heat Wave | WATCH(BE UPDATED) |
| Thunderstorms & Lightning | Cold wave | ALERT (BE PREPARED) |
| Hailstorm | Fog | WARNING (TAKE ACTION) |



**SUBDIVISIONWISE WEATHER WARNING FOR DAY 5
(28-10-2023)**



- | | | |
|----------------------------|----------------------|--------------------------|
| Subdivision Warning | Dust Storm | Subdivision color |
| Heavy Rain | Strong Surface Winds | NO WARNING |
| Heavy Snow | Heat Wave | WATCH(BE UPDATED) |
| Thunderstorms & Lightning | Cold wave | ALERT (BE PREPARED) |
| Hailstorm | Fog | WARNING (TAKE ACTION) |



Legends:

- ❖ **Heavy Rain:** 64.5 to 115.5 mm; **Very Heavy Rain:** 115.6 to 204.4 mm; **Extremely Heavy Rain:** >204.4mm.
- ❖ **Obsy:** Observatory; **AWS:** Automatic Weather Station; **dist:** District; **NH:** National Highway; **KVK:** Krishi Vigyan Kendra; **DVC:** Damodar Valley Corporation
- ❖ **Region wise classification of meteorological Sub-Divisions:**
 - **Northwest India:** Western Himalayan Region (Jammu-Kashmir-Ladakh-Gilgit-Baltistan-Muzaffarabad, Himachal Pradesh and Uttarakhand); Punjab, Haryana-Chandigarh-Delhi; West Uttar Pradesh, East Uttar Pradesh, West Rajasthan and East Rajasthan.
 - **Central India:** West Madhya Pradesh, East Madhya Pradesh, Vidarbha and Chhattisgarh.
 - **East India:** Bihar, Jharkhand, Sub-Himalaya West Bengal & Sikkim; Gangetic West Bengal, Odisha and Andaman & Nicobar Islands.
 - **Northeast India:** Arunachal Pradesh, Assam & Meghalaya and Nagaland, Manipur, Mizoram & Tripura.
 - **West India:** Gujarat Region, Saurashtra & Kutch, Konkan & Goa, Madhya Maharashtra and Marathwada.
 - **South India:** Coastal Andhra Pradesh & Yanam, Telangana, Rayalaseema, Coastal Karnataka, North Interior Karnataka, South Interior Karnataka, Kerala & Mahe, Tamil Nadu, Puducherry & Karaikal and Lakshadweep.

SPATIAL DISTRIBUTION			
(% of Stations reporting)			
% Stations	Category	% Stations	Category
76-100	Widespread (WS/ Most Places)	26-50	Scattered (SCT/ A Few Places)
51-75	Fairly Widespred (FWS/ Many Places)	1-25	Isolated (ISOL)

Subdivision Warning	Dust Storm	Subdivision color
Heavy Rain	Strong Surface Winds	NO WARNING
Heavy Snow	Heat Wave	WATCH(BE UPDATED)
Thunderstorms & Lightning	Cold wave	ALERT (BE PREPARED)
Hailstorm	Fog	WARNING (TAKE ACTION)

Probabilistic Forecast	
Terms	Probability of Occurrence (%)
Unlikely	< 25
Likely	25 - 50
Very Likely	50 - 75
Most Likely	> 75

Flash Flood Risk	
	High Risk (Take Action)
	Moderate Risk (Be Prepared)
	Low Risk (Be Updated)