



**Government of India
Ministry of Earth Sciences
India Meteorological Department**

Press Release

Date: 17th November, 2023

Time of Issue: 1245 hours IST

Subject: i) Cyclonic Storm “Midhili” over Northwest & adjoining Northeast Bay of Bengal likely to cross Bangladesh coast close to Khepupara with wind speed of 60-70 kmph gusting to 80 kmph during night of 17th November, 2023.

ii) A fresh easterly wave is likely to cause isolated heavy rainfall spell over Tamil Nadu and Kerala on 19th & 20th November, 2023.

Rainfall recorded during past 24 hours till 0830 hours IST of today:

- ❖ **Heavy rainfall** observed at isolated places over Kerala, Tamil Nadu.
 - ❖ **Significant Rainfall Amount (in cm): Kerala:** Enadimangalam Aws (dist Pathanamthitta) 10, Konni (dist Pathanamthitta) 9; **Tamil Nadu:** Nalumukku (dist Tirunelveli) 10, Oothu (dist Tirunelveli), Kannadaian Anicut (dist Tirunelveli) 9 each, Kakkachi (dist Tirunelveli) 8, Manjolai (dist Tirunelveli) 7.

Weather Systems based on 0830 hours IST

- ❖ Yesterday's **Deep Depression** over Westcentral Bay of Bengal intensified into a **Cyclonic Storm “Midhili” (pronounced as “Midhili”)** over the Northwest Bay of Bengal at 0530 hours IST of today. It moved north-northeastwards with a speed of 26 kmph during past 6 hours and lay centered at 0830 hours IST of today, the 17th November over Northwest & adjoining Northeast Bay of Bengal near latitude 20.8°N and longitude 89.0°E, about 250 km east-northeast of Paradip (Odisha), 180 km east-southeast of Digha (West Bengal) and 180 km southwest of Khepupara (Bangladesh).
It is likely to continue to move north-northeastwards and cross Bangladesh coast close to Khepupara with wind speed of 60-70 kmph gusting to 80 kmph during night of 17th November, 2023. **(refer Annexure I & II for details).**
- ❖ An upper air **Cyclonic Circulation** lies over Southwest Bay of Bengal & adjoining Sri Lanka and a **trough** runs from this cyclonic circulation to the cyclonic circulation associated with the **Cyclonic Storm** over Northwest & adjoining Northeast Bay of Bengal in the lower tropospheric levels.
- ❖ An upper air **Cyclonic Circulation** lies over south Andaman Sea in lower & middle tropospheric levels.

Forecast & Warnings associated with Cyclonic Storm

(i) Rainfall Warning: (Annexure III)

- Light to moderate rainfall at many places with **isolated heavy rainfall** is likely over coastal districts of West Bengal (North 24 Parganas) till evening of 17th November.

- Light to moderate rainfall at most places with **isolated heavy to very heavy rainfall** is likely over Nagaland, Manipur, Mizoram & Tripura on 17th & 18th November with **extremely heavy fall** at isolated places over Mizoram & Tripura on 17th November.
- Light to moderate rainfall at many places with **isolated heavy rainfall** is likely over south Assam and east Meghalaya on 17th & 18th November.

(ii) Fishermen Warning: (Annexure IV)

Fishermen are advised not to venture into

- North Bay of Bengal and along & off Bangladesh coast till 18th November afternoon
- Along & off West Bengal coast till 18th November morning.

(iii) Damage Expected & Action Suggested for coastal areas of West Bengal (North 24 Parganas) during next 12 hours:

- Damage to thatched huts and loose/unsecured structures.
- Minor damage to power and communication lines due to breaking of branches.
- Major damage to Kutcha and minor damage to Pucca roads.
- Some damage to paddy crops, banana, papaya & drumstick trees and orchards.
- Sea water inundation in low lying areas after erosion of Kutcha embankments.
- Partial Damage to standing crops in coastal areas of west Bengal.
- Damages to Kutcha embankments.

Forecast & Warnings associated with Easterly Wave:

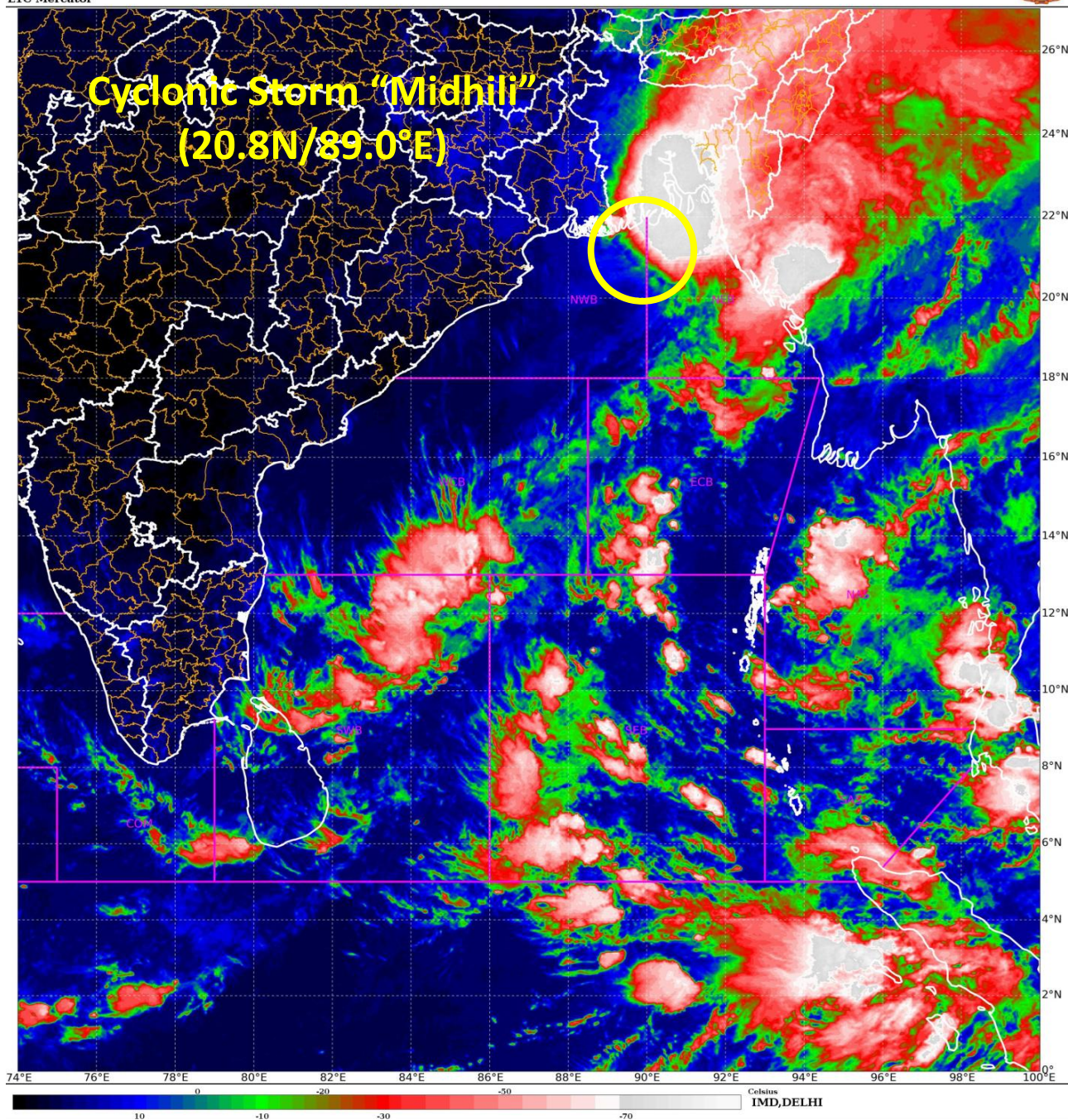
Light to moderate rainfall at some places with **isolated heavy rainfall** is very likely over Tamil Nadu on 17th, 19th & 20th November and Kerala on 19th & 20th November, 2023.

No significant weather likely over rest parts of the country.

For more details kindly refer: https://mausam.imd.gov.in/responsive/all_india_forecast_bulletin.php and <https://mausam.imd.gov.in/responsive/cycloneinformation.php>

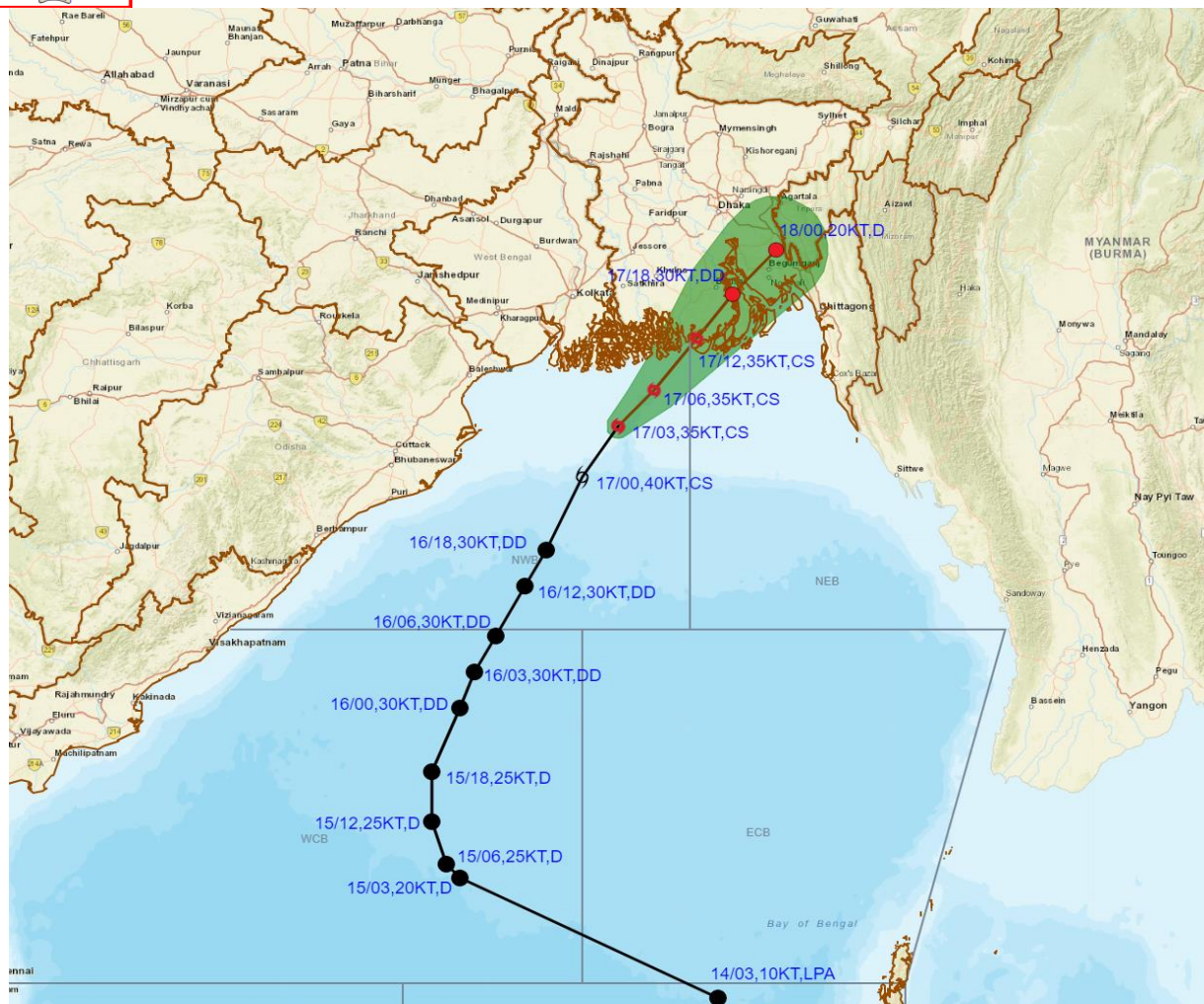
SAT : INSAT-3DR IMG
 IMG_TIR1_TEMP 10.8 um
 L1C Mercator

17-11-2023/(0445 to 0512) GMT
 17-11-2023/(1015 to 1042) IST





OBSERVED AND FORECAST TRACK AND INTENSITY ALONGWITH CONE OF UNCERTAINTY IN ASSOCIATION WITH CYCLONIC STORM MIDHILI OVER NORTHWEST AND ADJOINING NORTHEAST BAY OF BENGAL BASED ON 0300 UTC (0830 HRS IST) OF 17TH NOVEMBER 2023.



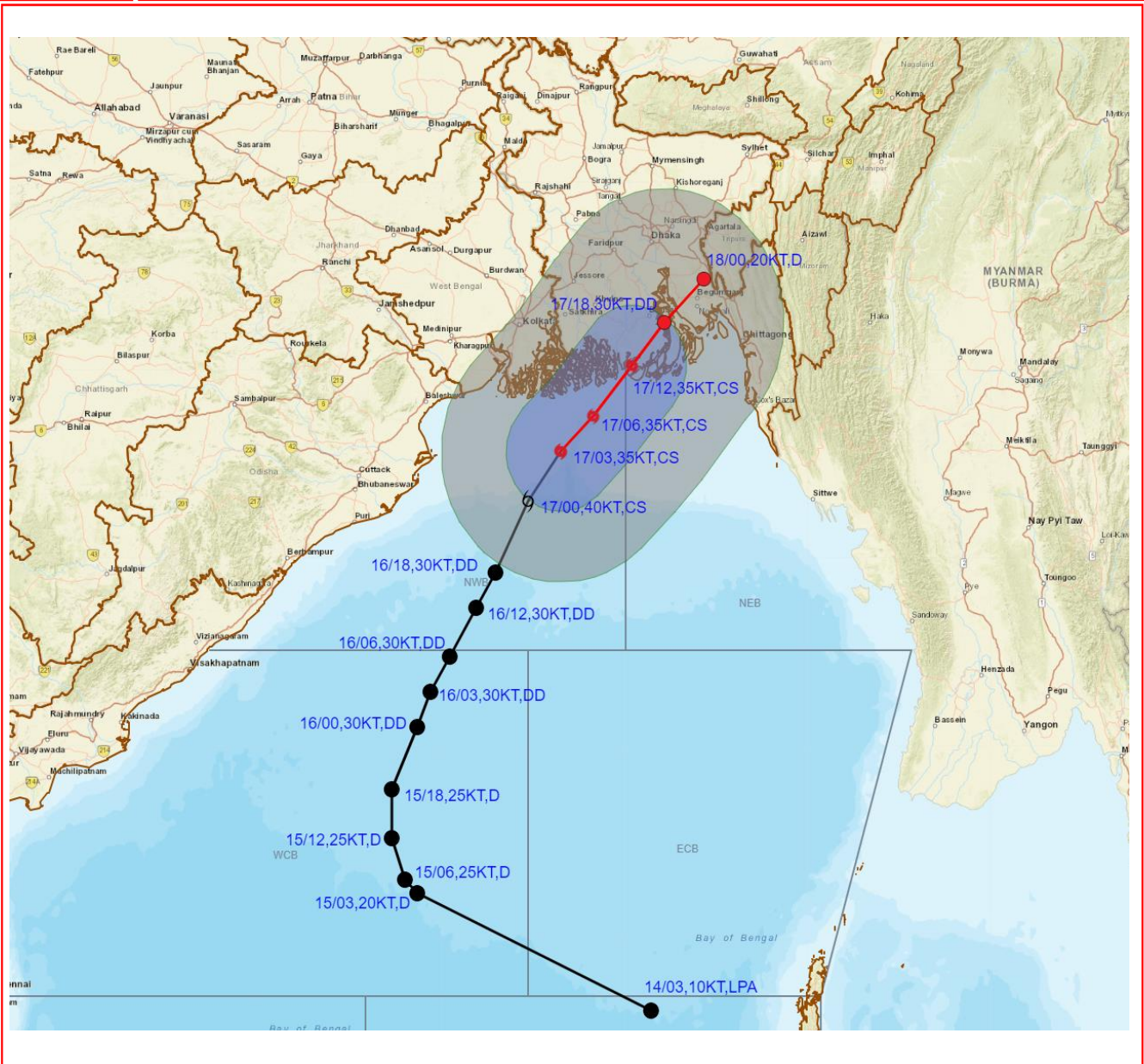
DATE/TIME IN UTC
IST=UTC + 0530
L: LOW PRESSURE AREA
WML: WELL MARKED LOW PRESSURE AREA
D: DEPRESSION (17-27 KT)
DD: DEEP DEPRESSION (28-33 KT)
CS: CYCLONIC STORM (34-47 KT)
SCS: SEVERE CYCLONIC STORM (48-63KT)
VSCS: VERY SEVERE CYCLONIC STORM (64-89 KT)
ESCS: EXTREMELY SEVERE CYCLONIC STORM (90-119 KT)
SuCS: SUPER CYCLONIC STORM (≥ 120 KT)

● LESS THAN 34 KT
● 34-47 KT
● ≥ 48 KT
— OBSERVED TRACK
— FORECAST TRACK
CONE OF UNCERTAINTY

Forecast	DISTANCE (KM) AND DIRECTION FROM STATIONS			
Date and Time (UTC)	PARADIP (CWR)	DIGHA	KHEPUPARA	CHITTAGONG (AMBAGAN)
17.11.23/0300	270, SSE	410, S	540, SSW	680 SW
18.11.23/0000	570, NE	420, ENE	170, NE	110, NNW



OBSERVED AND FORECAST TRACK AND INTENSITY ALONG WITH QUADRANT WIND DISTRIBUTION IN ASSOCIATION WITH CYCLONIC STORM MIDHILI NORTHWEST AND ADJOINING NORTHEAST BAY OF BENGAL BASED ON 0300 UTC (0830 HRS IST) OF 17TH NOVEMBER 2023.



DATE/TIME IN UTC
 IST=UTC + 0530
 L: LOW PRESSURE AREA
 WML: WELL MARKED LOW PRESSURE AREA
 D: DEPRESSION (17-27 KT)
 DD: DEEP DEPRESSION (28-33 KT)
 CS: CYCLONIC STORM (34-47 KT)
 SCS: SEVERE CYCLONIC STORM (48-63KT)
 VSCS: VERY SEVERE CYCLONIC STORM (64-89 KT)
 ESCS: EXTREMELY SEVERE CYCLONIC STORM (90-119 KT)
 SuCS: SUPER CYCLONIC STORM (≥ 120 KT)

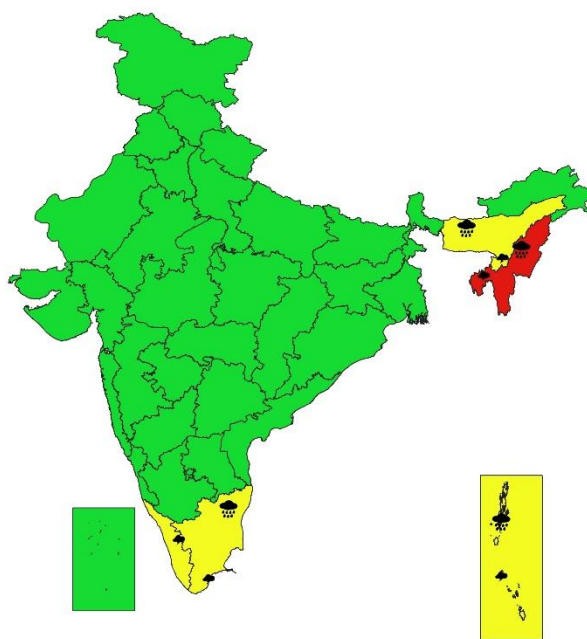
● LESS THAN 34 KT
 ○ 34-47 KT
 ○ ≥ 48 KT
 — OBSERVED TRACK
 — FORECAST TRACK
 — CONE OF UNCERTAINTY
 AREA OF MAXIMUM SUSTAINED WIND SPEED:
 — 28-33 KT (52-61 KMPH)
 — 34-49 KT (62-91 KMPH)
 — 50-63 KT (92-117 KMPH)
 — ≥ 64 KT (≥ 118 KMPH)

IMPACT OVER THE SEA

MSW (knot/kmph)	Impact	Action
28-33 (52-61)	Very rough seas	Total suspension of fishing operations
34-49 (62-91)	High to very high seas	Total suspension of fishing operations
50-63 (92-117)	Very high seas	Total suspension of fishing operations
≥ 64 (≥ 118)	Phenomenal	Total suspension of fishing operations



SUBDIVISIONWISE WEATHER WARNING FOR DAY 1 (17-11-2023)



Subdivision Warning

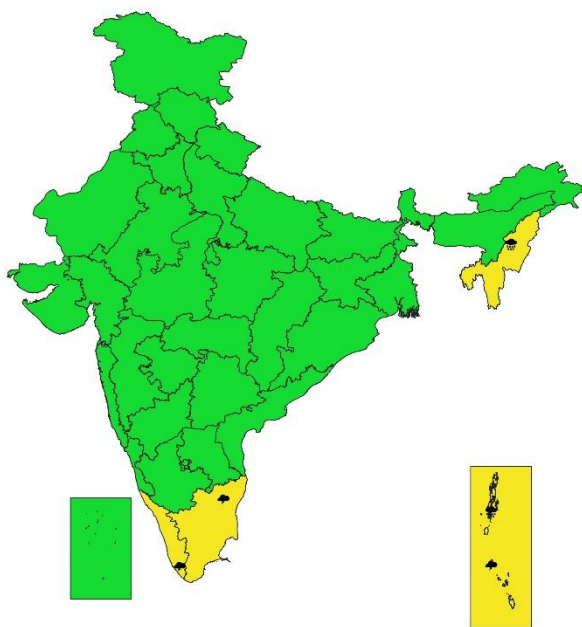
- Heavy Rain
- Heavy Snow
- Thunderstorms & Lightning
- Hailstorm
- Dust Storm
- Strong Surface Winds
- Heat Wave
- Cold wave
- Fog

Subdivision color

- NO WARNING
- WATCH (BE UPDATED)
- ALERT (BE PREPARED)
- WARNING (TAKE ACTION)



SUBDIVISIONWISE WEATHER WARNING FOR DAY 2 (18-11-2023)



Subdivision Warning

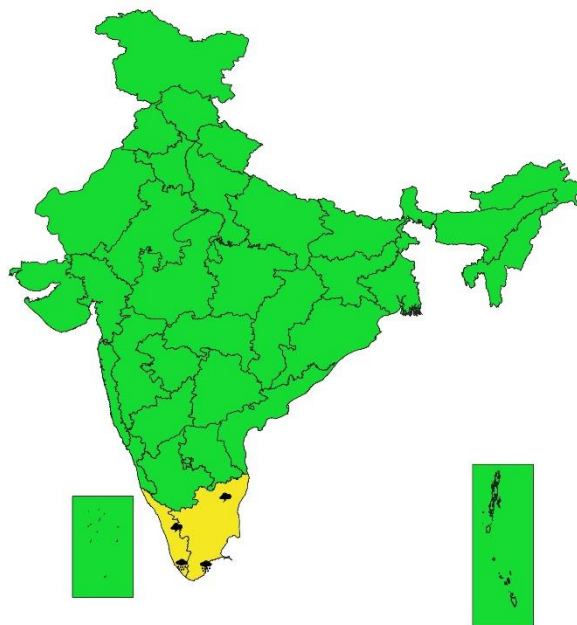
- Heavy Rain
- Heavy Snow
- Thunderstorms & Lightning
- Hailstorm
- Dust Storm
- Strong Surface Winds
- Heat Wave
- Cold wave
- Fog

Subdivision color

- NO WARNING
- WATCH (BE UPDATED)
- ALERT (BE PREPARED)
- WARNING (TAKE ACTION)



SUBDIVISIONWISE WEATHER WARNING FOR DAY 3 (19-11-2023)

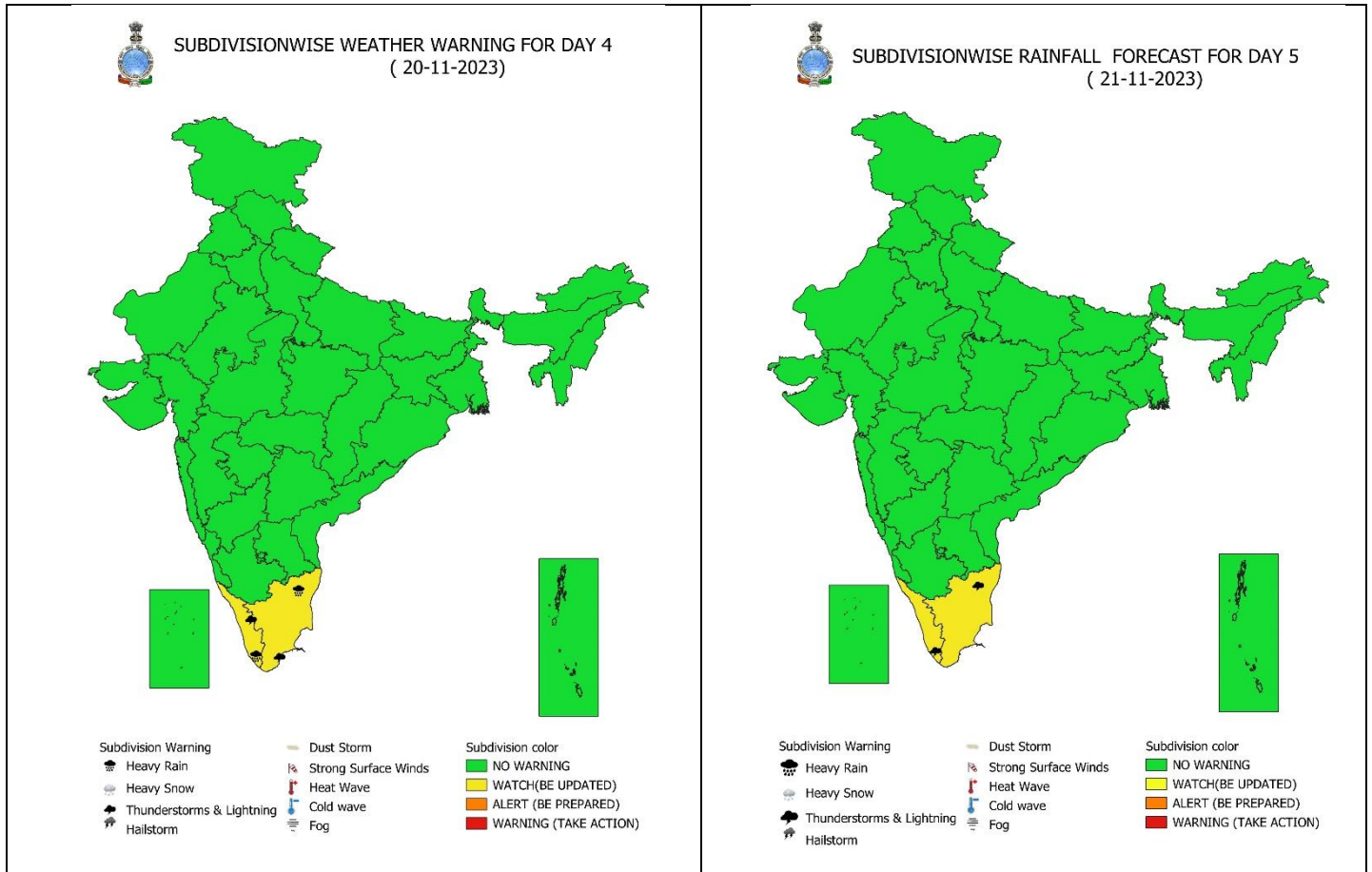


Subdivision Warning

- Heavy Rain
- Heavy Snow
- Thunderstorms & Lightning
- Hailstorm
- Dust Storm
- Strong Surface Winds
- Heat Wave
- Cold wave
- Fog

Subdivision color

- NO WARNING
- WATCH (BE UPDATED)
- ALERT (BE PREPARED)
- WARNING (TAKE ACTION)



Impact & Action Suggested due to very heavy rainfall over Mizoram & Tripura on 17th November.

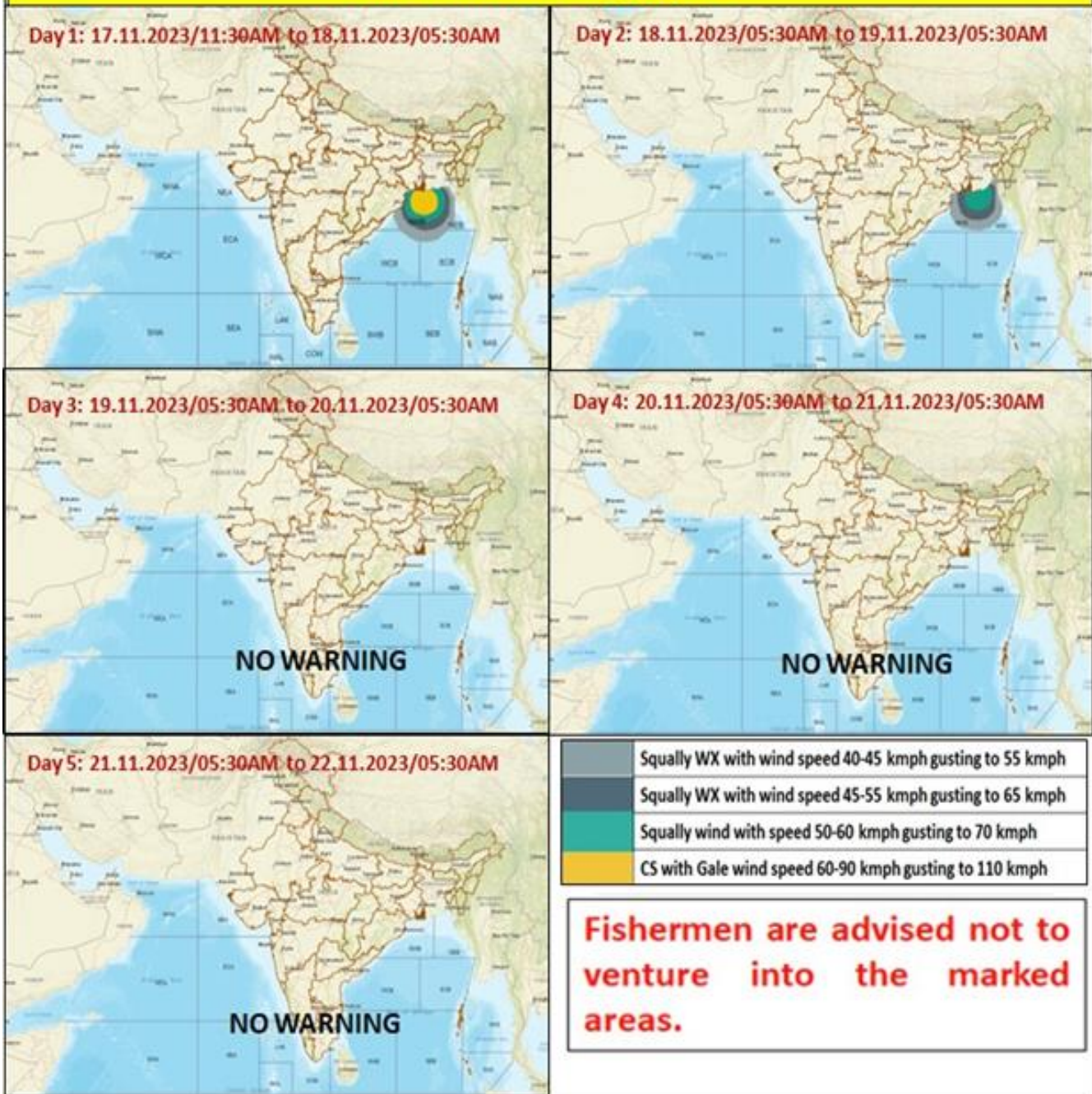
A. Impact Expected

- ❖ Localized Flooding of roads, water logging in low lying areas and closure of underpasses mainly in urban areas of the above region.
- ❖ Occasional reduction in visibility due to heavy rainfall.
- ❖ Disruption of traffic in major cities due to water logging in roads leading to increased travel time.
- ❖ Minor damage to kutcha roads.
- ❖ Possibilities of damage to vulnerable structure.
- ❖ Localized Landslides/Mudslides
- ❖ Damage to horticulture and standing crops in some areas due to inundation.
- ❖ It may lead to riverine flooding in some river catchments (for riverine flooding please visit Web page of CWC).

B. Action Suggested

- ❖ Check for traffic congestion on your route before leaving for your destination.
- ❖ Follow any traffic advisories that are issued in this regard.
- ❖ Avoid going to areas that face the water logging problems often.
- ❖ Avoid staying in vulnerable structure.

Fishermen warning graphics

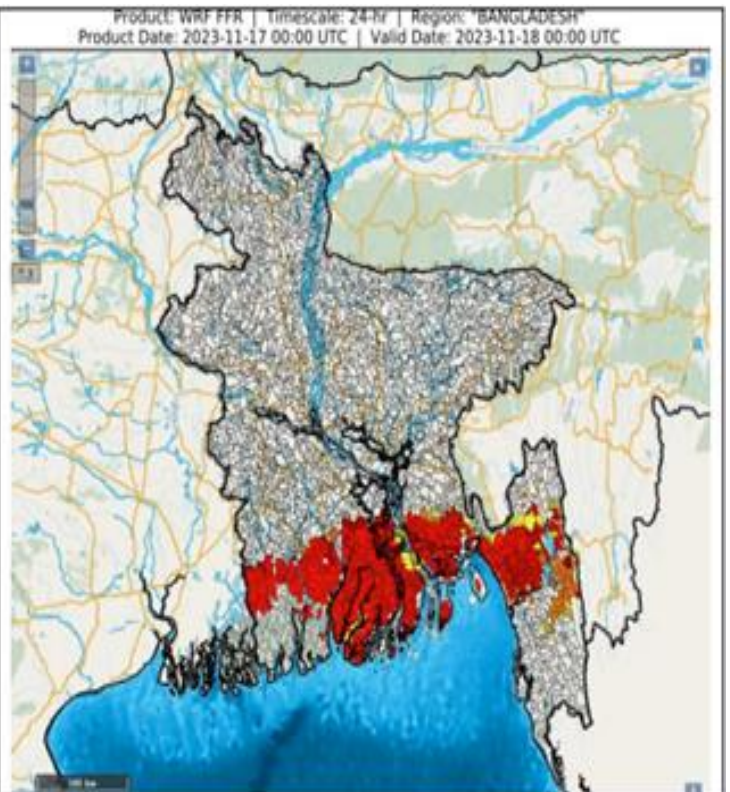


FLASH FLOOD GUIDANCE

24 hours Flash Flood Risk Outlook till 00 UTC of 18.11.2023:

Moderate flash flood risk likely over few watersheds & neighbourhoods of Southern parts of Bangladesh for next 24 hours.














Surface runoff/ Inundation may occur at some fully saturated soils & low-lying areas over AoC as shown in map due to expected rainfall occurrence in next 24 hours.



Legends:

- ❖ **Heavy Rain:** 64.5 to 115.5 mm; **Very Heavy Rain:** 115.6 to 204.4 mm; **Extremely Heavy Rain:** >204.4mm.
- ❖ **Obsy:** Observatory; **AWS:** Automatic Weather Station; **dist:** District; **NH:** National Highway; **KVK:** Krishi Vigyan Kendra; **DVC:** Damodar Valley Corporation
- ❖ **Region wise classification of meteorological Sub-Divisions:**
 - **Northwest India:** Western Himalayan Region (Jammu-Kashmir-Ladakh-Gilgit-Baltistan-Muzaffarabad, Himachal Pradesh and Uttarakhand); Punjab, Haryana-Chandigarh-Delhi; West Uttar Pradesh, East Uttar Pradesh, West Rajasthan and East Rajasthan.
 - **Central India:** West Madhya Pradesh, East Madhya Pradesh, Vidarbha and Chhattisgarh.
 - **East India:** Bihar, Jharkhand, Sub-Himalaya West Bengal & Sikkim; Gangetic West Bengal, Odisha and Andaman & Nicobar Islands.
 - **Northeast India:** Arunachal Pradesh, Assam & Meghalaya and Nagaland, Manipur, Mizoram & Tripura.
 - **West India:** Gujarat Region, Saurashtra & Kutch, Konkan & Goa, Madhya Maharashtra and Marathwada.
 - **South India:** Coastal Andhra Pradesh & Yanam, Telangana, Rayalaseema, Coastal Karnataka, North Interior Karnataka, South Interior Karnataka, Kerala & Mahe, Tamil Nadu, Puducherry & Karaikal and Lakshadweep.

SPATIAL DISTRIBUTION (% of Stations reporting)			
% Stations	Category	% Stations	Category
76-100	Widespread (WS/ Most Places)	26-50	Scattered (SCT/ A Few Places)
51-75	Fairly Widespread (FWS/ Many Places)	1-25	Isolated (ISOL)

Subdivision Warning	 Dust Storm	Subdivision color
 Heavy Rain	 Strong Surface Winds	 NO WARNING
 Heavy Snow	 Heat Wave	 WATCH (BE UPDATED)
 Thunderstorms & Lightning	 Cold wave	 ALERT (BE PREPARED)
 Hailstorm	 Fog	 WARNING (TAKE ACTION)

Probabilistic Forecast	
Terms	Probability of Occurrence (%)
Unlikely	< 25
Likely	25 - 50
Very Likely	50 - 75
Most Likely	> 75

Flash Flood Risk	
	High Risk (Take Action)
	Moderate Risk (Be Prepared)
	Low Risk (Be Updated)