



**Government of India
Ministry of Earth Sciences
India Meteorological Department**

**Press Release
Date: 19th November, 2023
Time of Issue: 1230 hours IST**

Subject: Isolated heavy rainfall spell likely over Tamil Nadu and Kerala during 19th – 23rd November, 2023.

Rainfall recorded during past 24 hours till 0830 hours IST of today:

- ❖ **Heavy rainfall** observed at isolated places over Tamil Nadu.
- ❖ **Significant Rainfall Amount (in cm): Tamil Nadu:** Nannilam (dist Thiruvavarur) 11, Pamban (dist Ramanathapuram) 9, Thangachimadam (dist Ramanathapuram) 8.

Weather Systems and Forecast & Warnings during next 5 days (graphics in Annexure I)

- ❖ An upper air **Cyclonic Circulation** lies over Comorin area in the lower tropospheric levels.
- ❖ Strong Northeasterly winds from Bay of Bengal to southeast Peninsular India are prevailing in lower tropospheric levels.
- ❖ Under the influence of above meteorological conditions;
 - ✓ Light to moderate rainfall at many places with **isolated heavy rainfall** is very likely over Tamil Nadu and Kerala during 19th-23rd; Coastal Andhra Pradesh on 21st and over South Interior Karnataka on 22nd & 23rd November, 2023.
 - ✓ **Isolated very heavy rainfall also likely over Tamil Nadu on 19th, 22nd & 23rd and over Kerala & Mahe on 22nd & 23rd November, 2023.**

Dense Fog Warning:

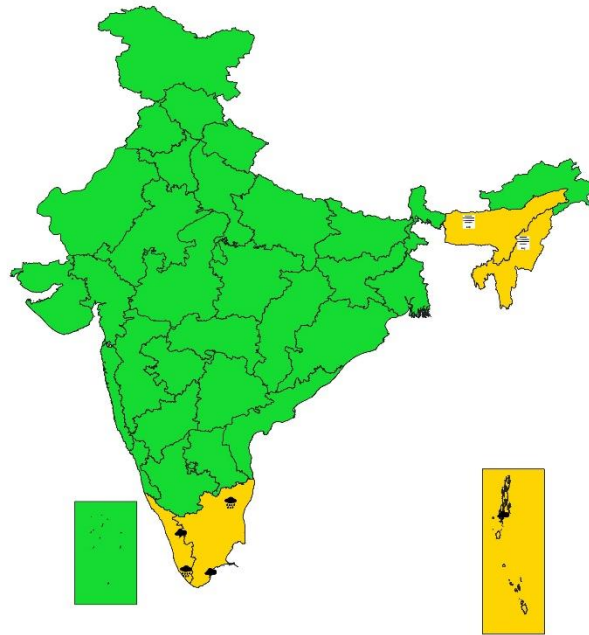
Dense Fog very likely in isolated pockets of east & south Assam, Meghalaya, Nagaland, Manipur, Mizoram and Tripura on 19th November 2023.

No significant weather likely over rest parts of the country.

For more details kindly refer: https://mausam.imd.gov.in/responsive/all_india_forecast_bulletin.php
and <https://mausam.imd.gov.in/responsive/cycloneinformation.php>



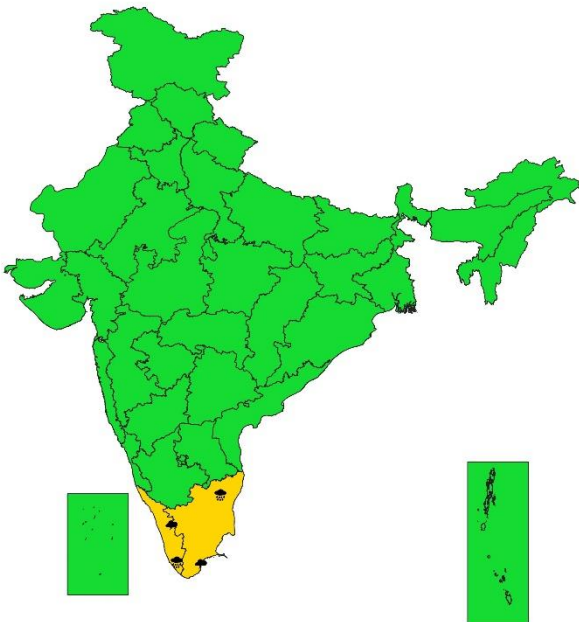
SUBDIVISIONWISE WEATHER WARNING FOR DAY 1
(19-11-2023)



- | | | |
|----------------------------|----------------------|--------------------------|
| Subdivision Warning | Dust Storm | Subdivision color |
| Heavy Rain | Strong Surface Winds | NO WARNING |
| Heavy Snow | Heat Wave | WATCH(BE UPDATED) |
| Thunderstorms & Lightning | Cold wave | ALERT (BE PREPARED) |
| Hailstorm | Fog | WARNING (TAKE ACTION) |



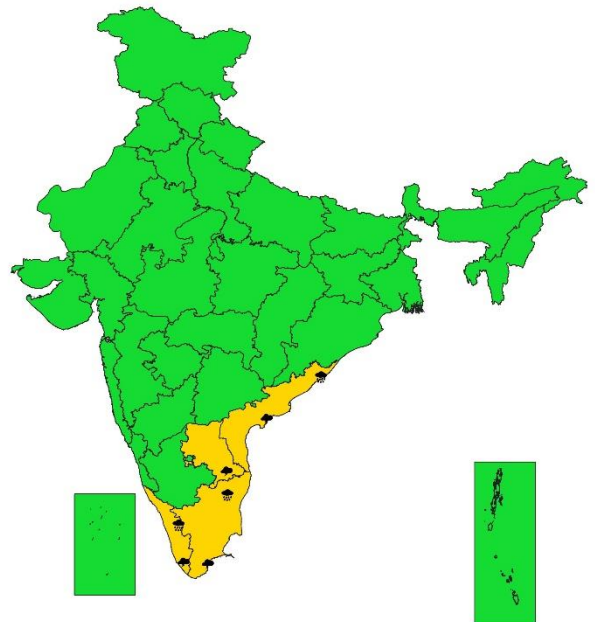
SUBDIVISIONWISE WEATHER WARNING FOR DAY 2
(20-11-2023)



- | | | |
|----------------------------|----------------------|--------------------------|
| Subdivision Warning | Dust Storm | Subdivision color |
| Heavy Rain | Strong Surface Winds | NO WARNING |
| Heavy Snow | Heat Wave | WATCH(BE UPDATED) |
| Thunderstorms & Lightning | Cold wave | ALERT (BE PREPARED) |
| Hailstorm | Fog | WARNING (TAKE ACTION) |



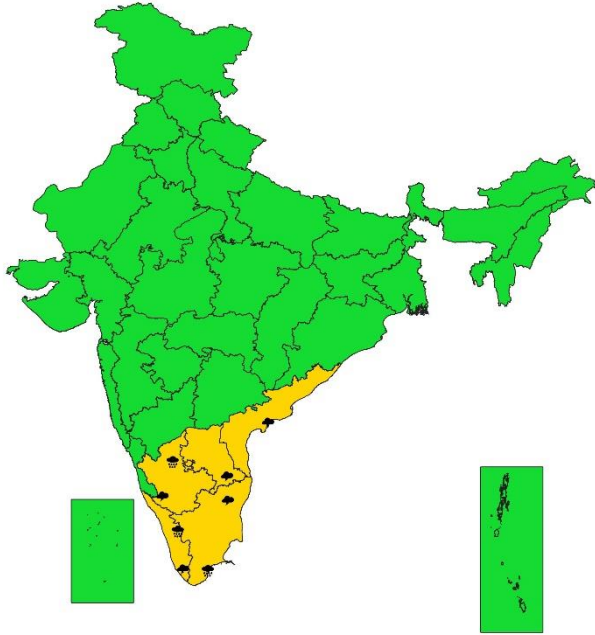
SUBDIVISIONWISE WEATHER WARNING FOR DAY 3
(21-11-2023)



- | | | |
|----------------------------|----------------------|--------------------------|
| Subdivision Warning | Dust Storm | Subdivision color |
| Heavy Rain | Strong Surface Winds | NO WARNING |
| Heavy Snow | Heat Wave | WATCH(BE UPDATED) |
| Thunderstorms & Lightning | Cold wave | ALERT (BE PREPARED) |
| Hailstorm | Fog | WARNING (TAKE ACTION) |



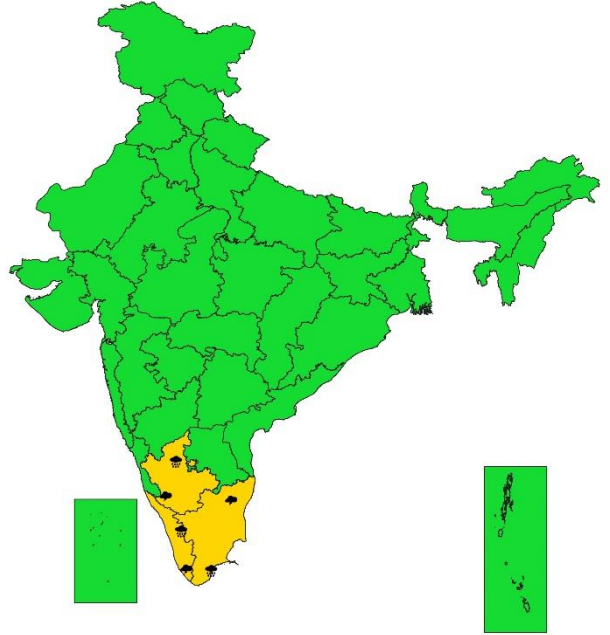
**SUBDIVISIONWISE WEATHER WARNING FOR DAY 4
(22-11-2023)**



- | | | |
|----------------------------|----------------------|--------------------------|
| Subdivision Warning | Dust Storm | Subdivision color |
| Heavy Rain | Strong Surface Winds | NO WARNING |
| Heavy Snow | Heat Wave | WATCH(BE UPDATED) |
| Thunderstorms & Lightning | Cold wave | ALERT (BE PREPARED) |
| Hailstorm | Fog | WARNING (TAKE ACTION) |



**SUBDIVISIONWISE WEATHER WARNING FOR DAY 5
(23-11-2023)**












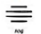



- | | | |
|----------------------------|----------------------|--------------------------|
| Subdivision Warning | Dust Storm | Subdivision color |
| Heavy Rain | Strong Surface Winds | NO WARNING |
| Heavy Snow | Heat Wave | WATCH(BE UPDATED) |
| Thunderstorms & Lightning | Cold wave | ALERT (BE PREPARED) |
| Hailstorm | Fog | WARNING (TAKE ACTION) |

Legends:

- ❖ **Heavy Rain:** 64.5 to 115.5 mm; **Very Heavy Rain:** 115.6 to 204.4 mm; **Extremely Heavy Rain:** >204.4mm.
- ❖ **Obsy:** Observatory; **AWS:** Automatic Weather Station; **dist:** District; **NH:** National Highway; **KVK:** Krishi Vigyan Kendra; **DVC:** Damodar Valley Corporation
- ❖ **Region wise classification of meteorological Sub-Divisions:**
 - **Northwest India:** Western Himalayan Region (Jammu-Kashmir-Ladakh-Gilgit-Baltistan-Muzaffarabad, Himachal Pradesh and Uttarakhand); Punjab, Haryana-Chandigarh-Delhi; West Uttar Pradesh, East Uttar Pradesh, West Rajasthan and East Rajasthan.
 - **Central India:** West Madhya Pradesh, East Madhya Pradesh, Vidarbha and Chhattisgarh.
 - **East India:** Bihar, Jharkhand, Sub-Himalaya West Bengal & Sikkim; Gangetic West Bengal, Odisha and Andaman & Nicobar Islands.
 - **Northeast India:** Arunachal Pradesh, Assam & Meghalaya and Nagaland, Manipur, Mizoram & Tripura.
 - **West India:** Gujarat Region, Saurashtra & Kutch, Konkan & Goa, Madhya Maharashtra and Marathwada.
 - **South India:** Coastal Andhra Pradesh & Yanam, Telangana, Rayalaseema, Coastal Karnataka, North Interior Karnataka, South Interior Karnataka, Kerala & Mahe, Tamil Nadu, Puducherry & Karaikal and Lakshadweep.

SPATIAL DISTRIBUTION (% of Stations reporting)			
% Stations	Category	% Stations	Category
76-100	Widespread (WS/ Most Places)	26-50	Scattered (SCT/ A Few Places)
51-75	Fairly Widespread (FWS/ Many Places)	1-25	Isolated (ISOL)

Subdivision Warning	 Dust Storm	Subdivision color
 Heavy Rain	 Strong Surface Winds	 NO WARNING
 Heavy Snow	 Heat Wave	 WATCH (BE UPDATED)
 Thunderstorms & Lightning	 Cold wave	 ALERT (BE PREPARED)
 Hailstorm	 Fog	 WARNING (TAKE ACTION)

Probabilistic Forecast	
Terms	Probability of Occurrence (%)
Unlikely	< 25
Likely	25 - 50
Very Likely	50 - 75
Most Likely	> 75

Flash Flood Risk	
	High Risk (Take Action)
	Moderate Risk (Be Prepared)
	Low Risk (Be Updated)