



**Government of India
Ministry of Earth Sciences
India Meteorological Department**

**Press Release
Date: 23rd November, 2023
Time of Issue: 1400 hours IST**

Subject:

1) Isolated heavy to very heavy rainfall likely to continue over Tamil Nadu and Kerala today and decrease thereafter.

2) Thunderstorm activity likely over Maharashtra, Madhya Pradesh, Gujarat & south Rajasthan during 25th-27th November.

Rainfall recorded during past 24 hours till 0830 hours IST of today: (see Annexure I)

Weather Systems and Forecast & Warnings during next 5 days (graphics in Annexure II)

- ❖ A trough in easterlies runs from Maldives to south Maharashtra coast in lower tropospheric levels. It is very likely to cause:
 - Light to moderate rainfall at most places accompanied with thunderstorm & lightning at isolated places and **isolated heavy rainfall** over Kerala & Mahe during 23rd-25th; over Tamil Nadu, Puducherry & Karaikal during 23rd-24th and over South Interior Karnataka on 23rd November, 2023.
 - **Isolated very heavy rainfall also likely over ghat areas of Tamil Nadu and north Kerala on 23rd November, 2023.**

- ❖ A fresh Western Disturbance will approach northwest India as an upper level trough extending upto Eastcentral Arabian Sea off Gujarat-Maharashtra-Goa coasts on 25th & 26th November. As a result, the above trough in in mid-latitude westerlies in middle & upper tropospheric levels will interact with lower level trough in easterlies. Due to this interaction:
 - Light to moderate rainfall at many places accompanied with isolated thunderstorm & lightning is likely over Madhya Maharashtra, Konkan & Goa, Marathwada, Madhya Pradesh during 24th-27th; over Gujarat State on 25th & 26th November with maximum activity on 26th November, 2023. **Thunderstorm & lightning accompanied with Hail** at isolated places over south Rajasthan, southwest Madhya Pradesh, north Madhya Maharashtra and north Marathwada on 26th November. **Isolated heavy rainfall likely over southwest Madhya Pradesh, north Madhya Maharashtra & Gujarat Region on 26th November, 2023.**
 - Light rainfall at isolated places also likely over Western Himalayan Region and plains of Northwest India during 26th-28th November. **Thunderstorm & lightning accompanied with Hail** at isolated places over Uttarakhand on 27th November.

- ❖ A Cyclonic Circulation is likely to emerge over South Andaman Sea & neighbourhood around 25th November. Under its influence, a Low Pressure Area is likely to form over South Andaman Sea & neighbourhood around 26th November. It is likely to move west-

northwestwards and intensify into a Depression over Southeast Bay of Bengal & adjoining Andaman Sea around 27th November.

- Light to moderate rainfall at many places accompanied with isolated thunderstorm & lightning is likely over Andaman & Nicobar Islands during 26th–27th November, 2023. **Isolated heavy rainfall** also likely over Andaman & Nicobar Islands during the same period.
- **Squally weather (wind speed reaching 40-45 kmph gusting to 55 kmph)** likely over south Andaman Sea on 26th November; **Squally weather (wind speed reaching 45-55 kmph gusting to 65 kmph)** over south Andaman Sea & adjoining Southeast Bay of Bengal.
- **Fishermen are advised not to venture into South Andaman Sea on 26th & 27th and over Southeast Bay of Bengal on 27th November. (graphics in Annexure III)**

❖ **No significant weather likely over rest parts of the country.**

For more details kindly refer: https://mausam.imd.gov.in/responsive/all_india_forecast_bulletin.php and <https://mausam.imd.gov.in/responsive/cycloneinformation.php>

Annexure I

Rainfall recorded during past 24 hours till 0830 hours IST of today:

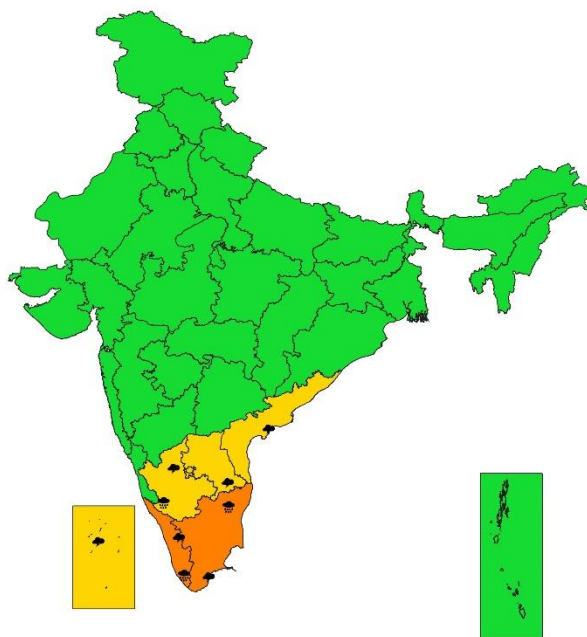
Heavy to very heavy rainfall at a few places with isolated extremely heavy fall recorded over Tamil Nadu, Puducherry & Karaikal and **heavy to very heavy rainfall** at isolated places over Kerala & Mahe.

❖ **Significant Rainfall Amount (≥12 cm):**

- **Tamil Nadu, Puducherry & Karaikal:** Mettupalayam (dist Coimbatore) 37, Kil Kotagiri Estate (dist The Nilgiris) 24, Kadaladi (dist Ramanathapuram) 17, Kavundapadi (dist Erode), Valinokam (dist Ramanathapuram) 15 each, Vamban (dist Pudukkottai), Kozhiporvilai (dist Kanniyakumari), Ayikudi (dist Tenkasi), Coonoor (dist The Nilgiris) 13 each, Thuckalay (dist Kanniyakumari) 12;
- **Kerala & Mahe:** Thiruvananthapuram (dist Thiruvananthapuram) 15, Kunnathanam (dist Pathanamthitta) 15, Enadimangalam (dist Pathanamthitta) 13, Peermade (dist Idukki) 12.



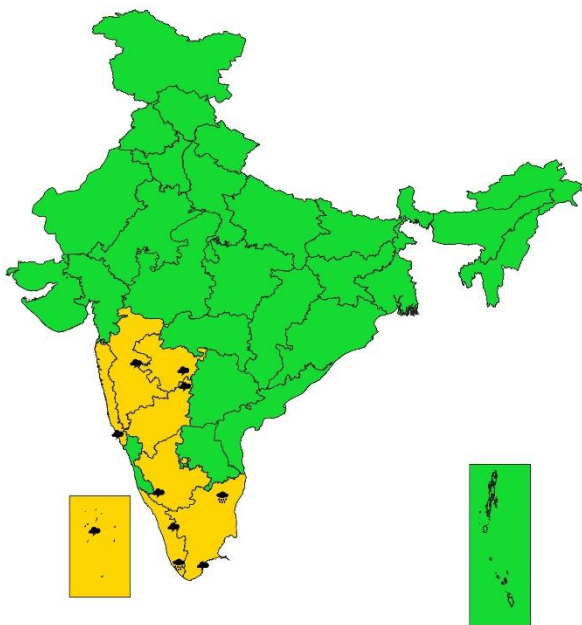
SUBDIVISIONWISE WEATHER WARNING FOR DAY 1
(23-11-2023)



- | | | |
|----------------------------|----------------------|--------------------------|
| Subdivision Warning | Dust Storm | Subdivision color |
| Heavy Rain | Strong Surface Winds | NO WARNING |
| Heavy Snow | Heat Wave | WATCH (BE UPDATED) |
| Thunderstorms & Lightning | Cold wave | ALERT (BE PREPARED) |
| Hailstorm | Fog | WARNING (TAKE ACTION) |



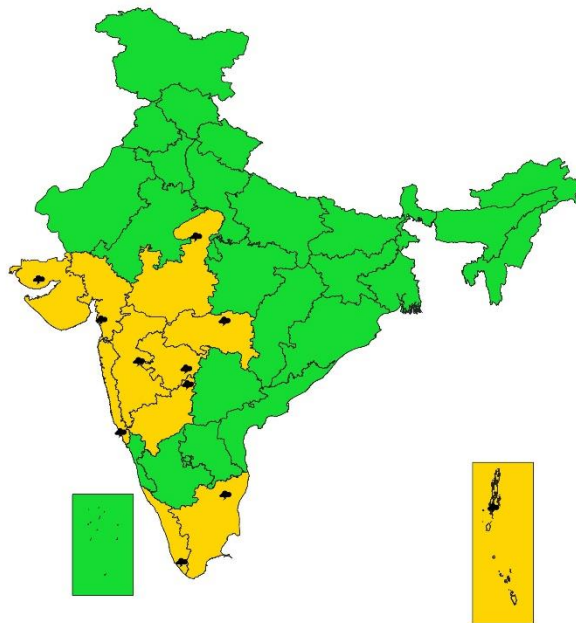
SUBDIVISIONWISE WEATHER WARNING FOR DAY 2
(24-11-2023)



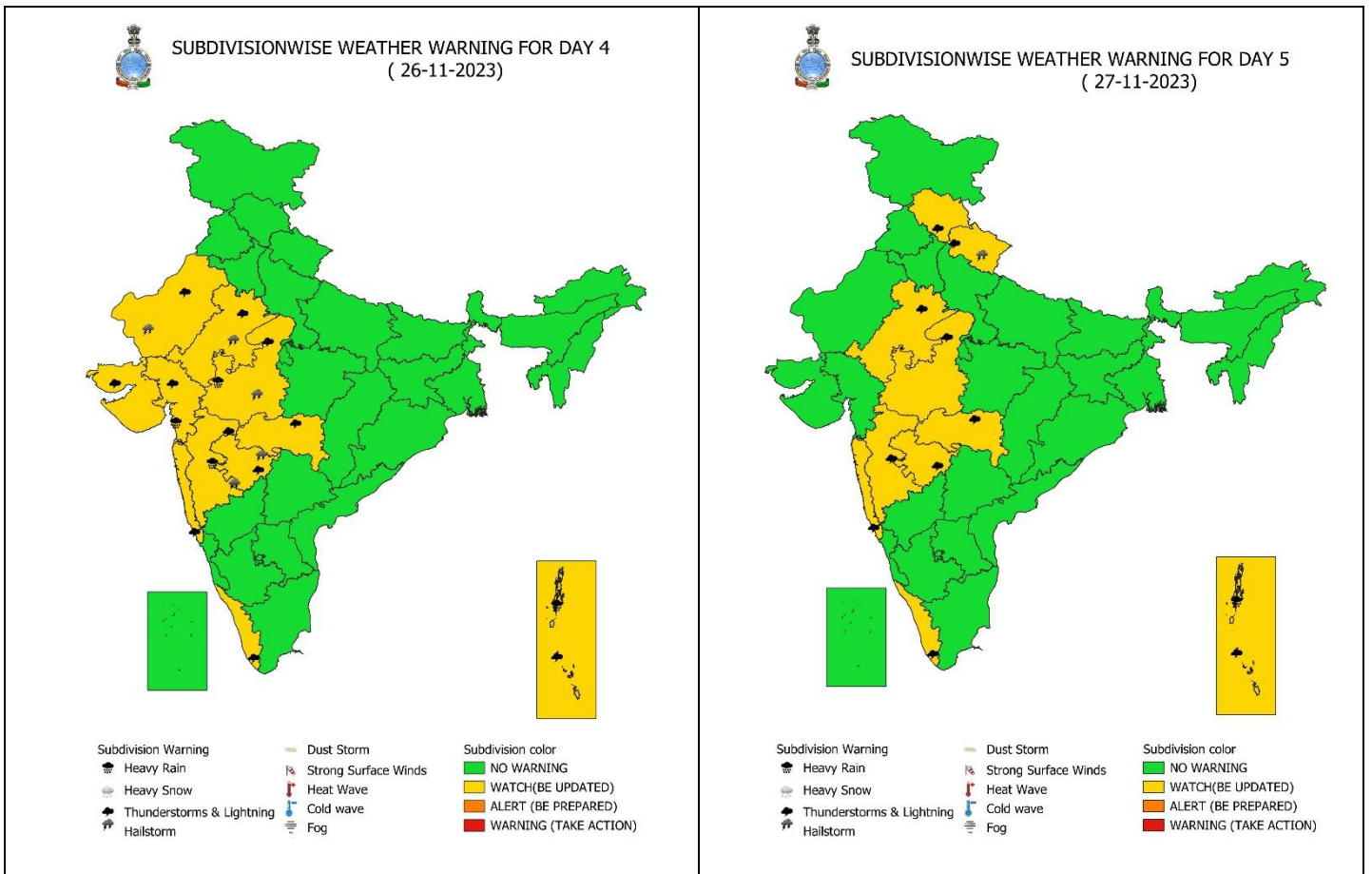
- | | | |
|----------------------------|----------------------|--------------------------|
| Subdivision Warning | Dust Storm | Subdivision color |
| Heavy Rain | Strong Surface Winds | NO WARNING |
| Heavy Snow | Heat Wave | WATCH (BE UPDATED) |
| Thunderstorms & Lightning | Cold wave | ALERT (BE PREPARED) |
| Hailstorm | Fog | WARNING (TAKE ACTION) |



SUBDIVISIONWISE WEATHER WARNING FOR DAY 3
(25-11-2023)



- | | | |
|----------------------------|----------------------|--------------------------|
| Subdivision Warning | Dust Storm | Subdivision color |
| Heavy Rain | Strong Surface Winds | NO WARNING |
| Heavy Snow | Heat Wave | WATCH (BE UPDATED) |
| Thunderstorms & Lightning | Cold wave | ALERT (BE PREPARED) |
| Hailstorm | Fog | WARNING (TAKE ACTION) |



Impact & Action Suggested due to very heavy rainfall over north Kerala & Mahe and ghat areas of Tamil Nadu on 23rd November,2023.

A. Impact Expected

- Localized Flooding of roads, water logging in low lying areas and closure of underpasses mainly in urban areas of the above region.
- Occasional reduction in visibility due to heavy rainfall.
- Disruption of traffic in major cities due to water logging in roads leading to increased travel time.
- Minor damage to kutcha roads.
- Possibilities of damage to vulnerable structure.
- Localized Landslides/Mudslides
- Damage to horticulture and standing crops in some areas due to inundation.
- It may lead to riverine flooding in some river catchments (for riverine flooding please visit Web page of CWC).

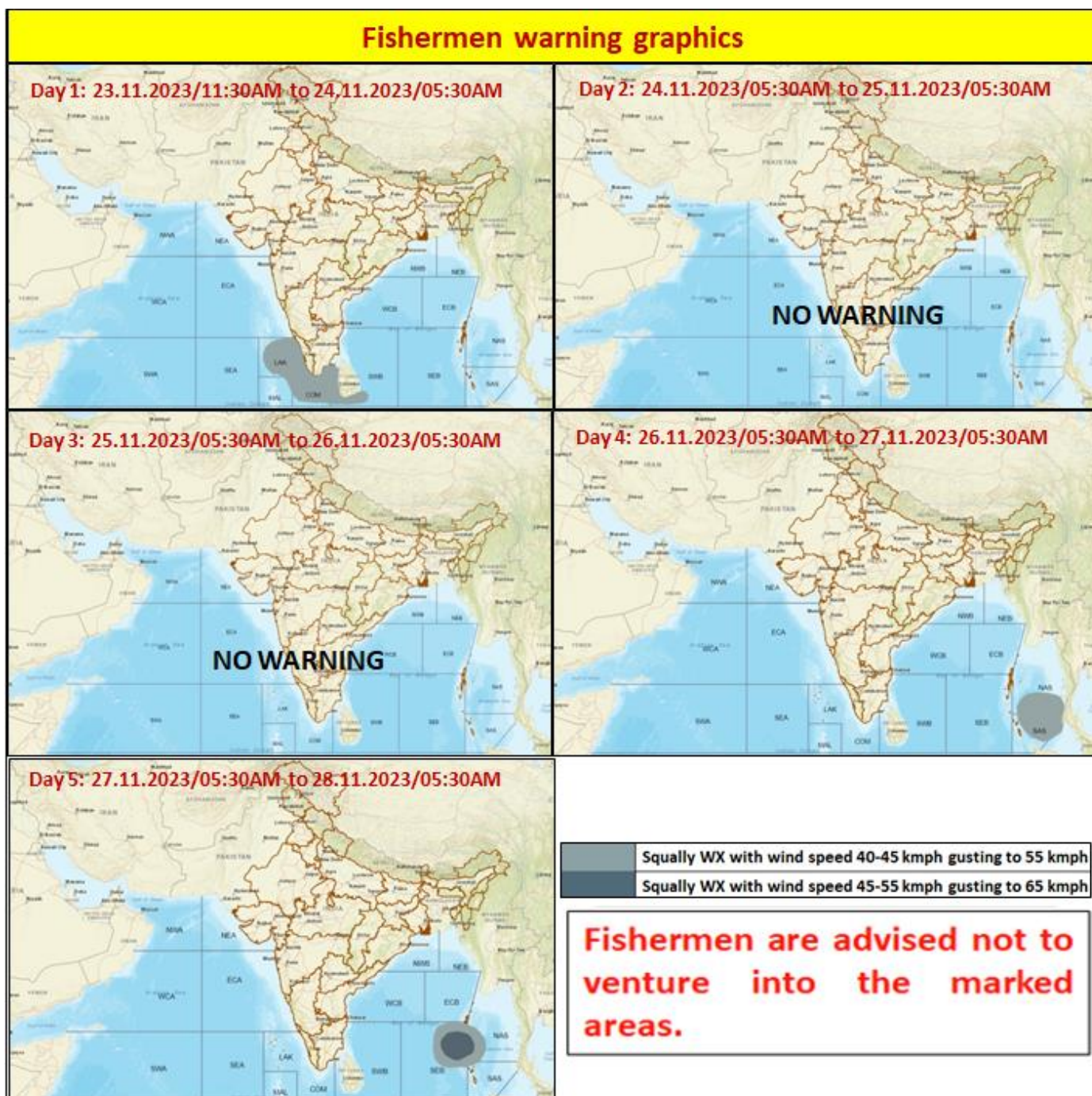
B. Action Suggested

- Check for traffic congestion on your route before leaving for your destination.
- Follow any traffic advisories that are issued in this regard.
- Avoid going to areas that face the water logging problems often.
- Avoid staying in vulnerable structure.

Agromet advisories for heavy rainfall likely over Tamil Nadu and Kerala.

- Drain out excess water from standing crop fields to avoid water stagnation in Tamil Nadu and Kerala.
- Undertake propping in sugarcane crop to avoid lodging.
- Provide adequate support to banana plantations.













Annexure III



Legends:

- ❖ **Heavy Rain:** 64.5 to 115.5 mm; **Very Heavy Rain:** 115.6 to 204.4 mm; **Extremely Heavy Rain:** >204.4mm.
- ❖ **Obsy:** Observatory; **AWS:** Automatic Weather Station; **dist:** District; **NH:** National Highway; **KVK:** Krishi Vigyan Kendra; **DVC:** Damodar Valley Corporation
- ❖ **Region wise classification of meteorological Sub-Divisions:**
 - **Northwest India:** Western Himalayan Region (Jammu-Kashmir-Ladakh-Gilgit-Baltistan-Muzaffarabad, Himachal Pradesh and Uttarakhand); Punjab, Haryana-Chandigarh-Delhi; West Uttar Pradesh, East Uttar Pradesh, West Rajasthan and East Rajasthan.
 - **Central India:** West Madhya Pradesh, East Madhya Pradesh, Vidarbha and Chhattisgarh.
 - **East India:** Bihar, Jharkhand, Sub-Himalaya West Bengal & Sikkim; Gangetic West Bengal, Odisha and Andaman & Nicobar Islands.
 - **Northeast India:** Arunachal Pradesh, Assam & Meghalaya and Nagaland, Manipur, Mizoram & Tripura.
 - **West India:** Gujarat Region, Saurashtra & Kutch, Konkan & Goa, Madhya Maharashtra and Marathwada.
 - **South India:** Coastal Andhra Pradesh & Yanam, Telangana, Rayalaseema, Coastal Karnataka, North Interior Karnataka, South Interior Karnataka, Kerala & Mahe, Tamil Nadu, Puducherry & Karaikal and Lakshadweep.

SPATIAL DISTRIBUTION (% of Stations reporting)			
% Stations	Category	% Stations	Category
76-100	Widespread (WS/ Most Places)	26-50	Scattered (SCT/ A Few Places)
51-75	Fairly Widespread (FWS/ Many Places)	1-25	Isolated (ISOL)

Subdivision Warning	Dust Storm	Subdivision color
 Heavy Rain	 Strong Surface Winds	 NO WARNING
 Heavy Snow	 Heat Wave	 WATCH (BE UPDATED)
 Thunderstorms & Lightning	 Cold wave	 ALERT (BE PREPARED)
 Hailstorm	 Fog	 WARNING (TAKE ACTION)

Probabilistic Forecast	
Terms	Probability of Occurrence (%)
Unlikely	< 25
Likely	25 - 50
Very Likely	50 - 75
Most Likely	> 75

Flash Flood Risk	
	High Risk (Take Action)
	Moderate Risk (Be Prepared)
	Low Risk (Be Updated)