



**Government of India
Ministry of Earth Sciences
India Meteorological Department**

**Press Release
Date: 24th November, 2023
Time of Issue: 1300 hours IST**

Subject:

1) Isolated heavy rainfall likely to continue over Tamil Nadu and Kerala today and decrease thereafter.

2) Thunderstorm activity likely over Maharashtra, Madhya Pradesh, Gujarat & south Rajasthan during 25th-27th November.

Rainfall recorded during past 24 hours till 0830 hours IST of today: (see Annexure I)

Weather Systems and Forecast & Warnings during next 5 days (graphics in Annexure II)

- ❖ A trough in easterlies runs from Maldives to north Maharashtra coast in lower tropospheric levels. It is very likely to cause:
 - Light to moderate rainfall at most places accompanied with thunderstorm & lightning at isolated places and **isolated heavy rainfall** over Kerala & Mahe and Lakshadweep on 24th; over Tamil Nadu, Puducherry & Karaikal **on 24th & 25th November, 2023.**

- ❖ A fresh Western Disturbance will approach northwest India as an upper level trough extending upto Eastcentral Arabian Sea off Gujarat-Maharashtra-Goa coasts on 25th & 26th November. As a result, the above trough in in mid-latitude westerlies in middle & upper tropospheric levels will interact with lower level trough in easterlies. Due to this interaction:
 - Light to moderate rainfall at many places accompanied with isolated thunderstorm & lightning is likely over Madhya Maharashtra, Konkan & Goa, Marathwada, Madhya Pradesh during 24th-27th; over Gujarat State on 25th & 26th November with maximum activity on 26th November, 2023.
 - **Thunderstorm & lightning accompanied with Hail** at isolated places over south Rajasthan, southwest Madhya Pradesh, north Madhya Maharashtra and north Marathwada during 26th - 27th November.
 - **Isolated heavy rainfall likely over East Rajasthan, Vidarbha, north Madhya Maharashtra & Gujarat Region on 26th; over southwest Madhya Pradesh on 26th & 27th; November, 2023.**
 - Light rainfall at isolated places also likely over Western Himalayan Region and plains of Northwest India during 26th-28th November. **Thunderstorm & lightning accompanied with Hail** at isolated places over Uttarakhand on 27th November.

- A Cyclonic Circulation is likely to emerge over South Andaman Sea & neighbourhood around 26th November. Under its influence, a **Low Pressure Area** is likely to form over South Andaman Sea & adjoining Southeast Bay of Bengal around 27th November. It is likely to

move west-northwestwards and intensify into a Depression over Southeast Bay of Bengal around 29th November, 2023. Under its influence:

- Light to moderate rainfall at many places accompanied with isolated thunderstorm & lightning is likely over Andaman & Nicobar Islands during 26th–27th November, 2023. Isolated heavy rainfall also likely over Andaman & Nicobar Islands during 26th – 28th November.
- **Squally weather (wind speed reaching 30-40 kmph gusting to 50 kmph)** likely over south Andaman Sea on 26th November; **Squally weather (wind speed reaching 40-50 kmph gusting to 60 kmph)** over south Andaman Sea & adjoining Southeast Bay of Bengal during 27th-28th and **wind speed reaching 45-55 kmph gusting to 65 kmph** over south Andaman Sea & adjoining Southeast Bay of Bengal during 29th-30th November.
- **Fishermen are advised not to venture into South Andaman Sea on 26th & 27th and over Southeast Bay of Bengal on 27th November.(graphics in Annexure III)**

❖ **No significant weather likely over rest parts of the country.**

For more details kindly refer: https://mausam.imd.gov.in/responsive/all_india_forecast_bulletin.php

and <https://mausam.imd.gov.in/responsive/cycloneinformation.php>

Annexure I

Rainfall recorded during past 24 hours till 0830 hours IST of today:

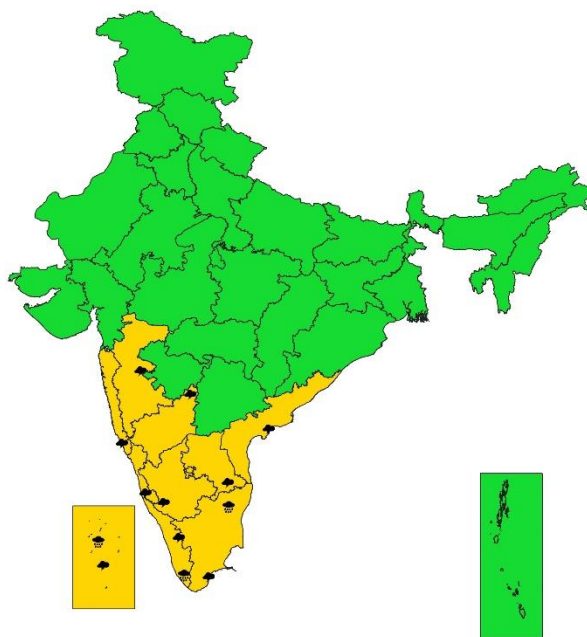
Heavy rainfall at isolated places over Tamil Nadu, Puducherry & Karaikal.

❖ **Significant Rainfall Amount (≥12 cm):**

- **Tamil Nadu, Puducherry & Karaikal:** Coonoor (dist The Nilgiris) 9, Surangudi (dist Thoothukudi), Alakarai Estate (dist The Nilgiris), Billimalai Estate (dist The Nilgiris) 8 each, Burliar (dist The Nilgiris), Kil Kotagiri Estate (dist The Nilgiris) 7 each,



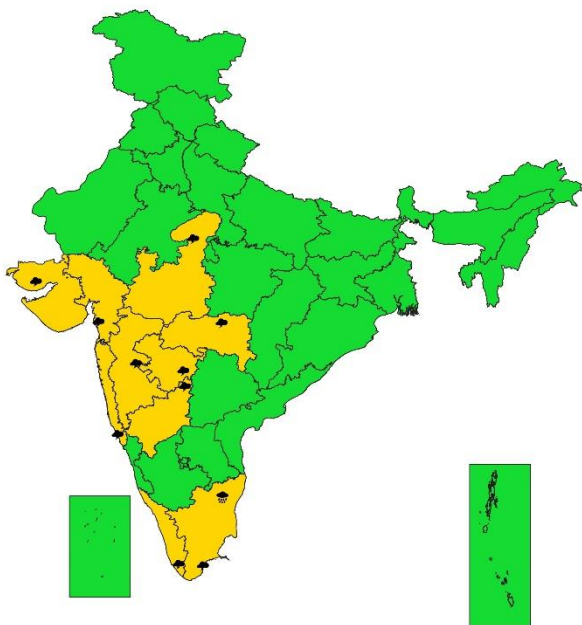
SUBDIVISIONWISE WEATHER WARNING FOR DAY 1
(24-11-2023)



- | | | |
|-----------------------------|------------------------|--------------------------|
| Subdivision Warning | Dust Storm | Subdivision color |
| ☁ Heavy Rain | 🌪 Strong Surface Winds | 🟢 NO WARNING |
| ❄ Heavy Snow | 🔥 Heat Wave | 🟡 WATCH(BE UPDATED) |
| ⚡ Thunderstorms & Lightning | ❄ Cold wave | 🟠 ALERT (BE PREPARED) |
| 🌨 Hailstorm | 🌫 Fog | 🔴 WARNING (TAKE ACTION) |



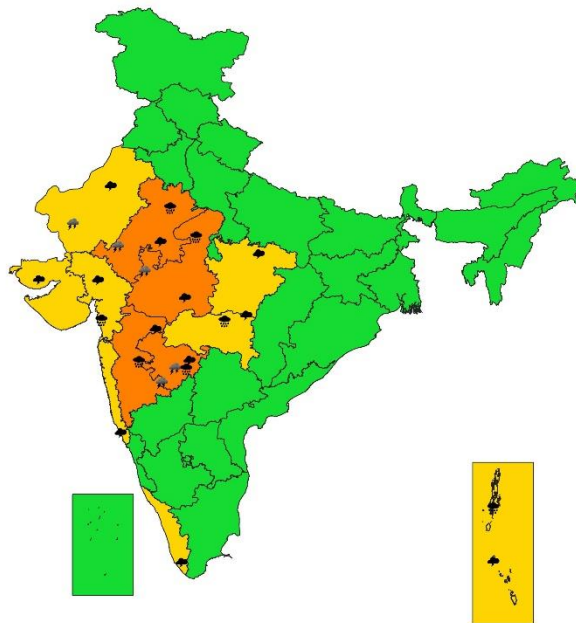
SUBDIVISIONWISE WEATHER WARNING FOR DAY 2
(25-11-2023)



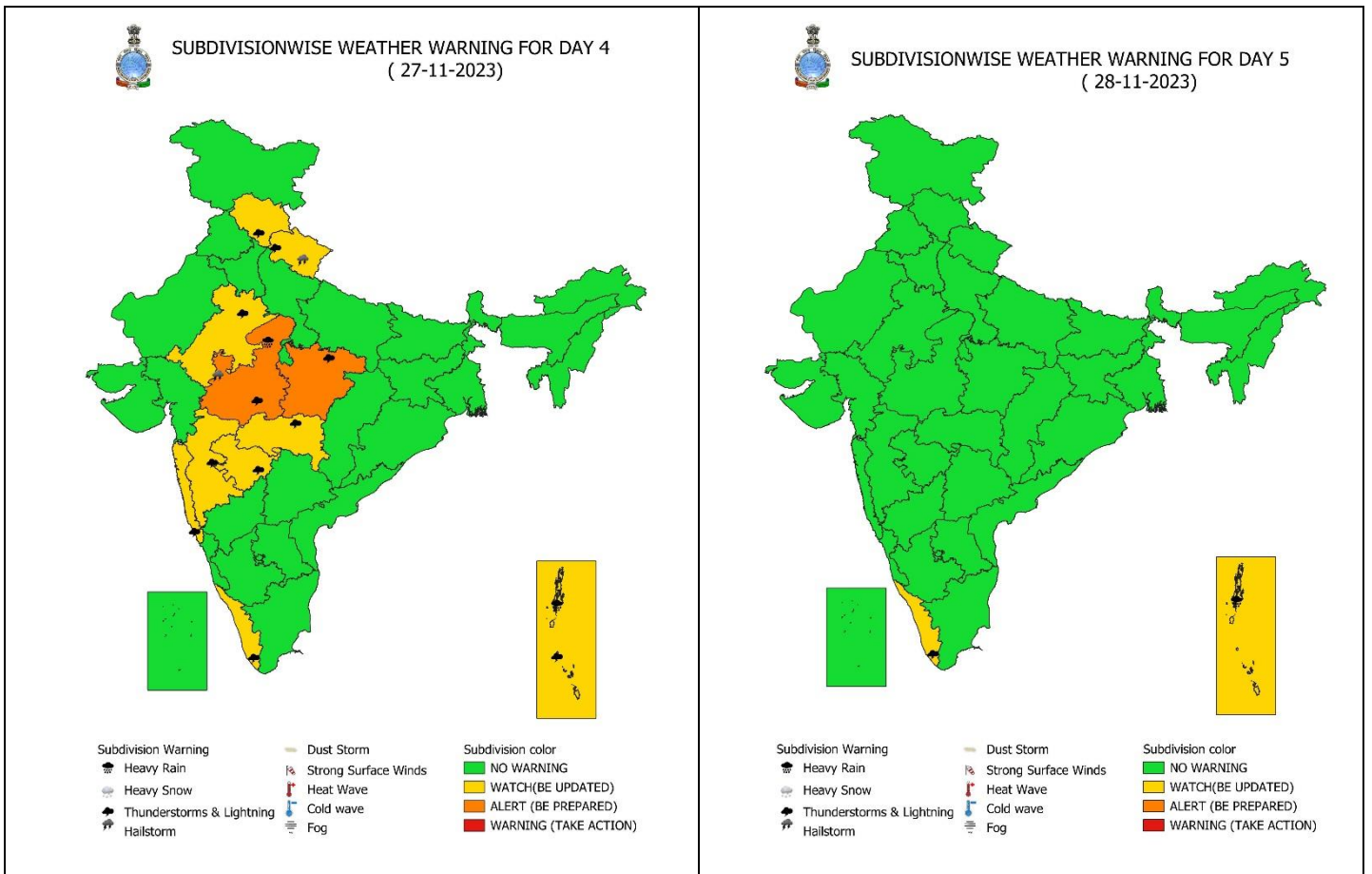
- | | | |
|-----------------------------|------------------------|--------------------------|
| Subdivision Warning | Dust Storm | Subdivision color |
| ☁ Heavy Rain | 🌪 Strong Surface Winds | 🟢 NO WARNING |
| ❄ Heavy Snow | 🔥 Heat Wave | 🟡 WATCH(BE UPDATED) |
| ⚡ Thunderstorms & Lightning | ❄ Cold wave | 🟠 ALERT (BE PREPARED) |
| 🌨 Hailstorm | 🌫 Fog | 🔴 WARNING (TAKE ACTION) |



SUBDIVISIONWISE WEATHER WARNING FOR DAY 3
(26-11-2023)



- | | | |
|-----------------------------|------------------------|--------------------------|
| Subdivision Warning | Dust Storm | Subdivision color |
| ☁ Heavy Rain | 🌪 Strong Surface Winds | 🟢 NO WARNING |
| ❄ Heavy Snow | 🔥 Heat Wave | 🟡 WATCH(BE UPDATED) |
| ⚡ Thunderstorms & Lightning | ❄ Cold wave | 🟠 ALERT (BE PREPARED) |
| 🌨 Hailstorm | 🌫 Fog | 🔴 WARNING (TAKE ACTION) |



Impact expected and action suggested due to isolated thunderstorm with lightning/gusty winds & Hailstorm over East Rajasthan, West Madhya Pradesh, Madhya Maharashtra, Marathwada on 26th; over Madhya Pradesh on 27th November, 2023.

Impact expected:

- Strong wind/hail may damage plantation, horticulture and standing crops.
- Hail may injure people and cattle at open places.
- Partial damage to vulnerable structures due to strong winds.
- Minor damage to kutcha houses/walls and huts.
- Loose objects may fly.

Action suggested:

- Stay indoors, close windows & doors and avoid travel if possible.
- Take safe shelters; do not take shelter under trees.
- Do not lie on concrete floors and do not lean against concrete walls.
- Unplug electrical/ electronic appliances.
- Immediately get out of water bodies.
- Keep away from all the objects that conduct electricity.

Fishermen warning graphics



Legends:

- ❖ **Heavy Rain:** 64.5 to 115.5 mm; **Very Heavy Rain:** 115.6 to 204.4 mm; **Extremely Heavy Rain:** >204.4mm.
- ❖ **Obsy:** Observatory; **AWS:** Automatic Weather Station; **dist:** District; **NH:** National Highway; **KVK:** Krishi Vigyan Kendra; **DVC:** Damodar Valley Corporation
- ❖ **Region wise classification of meteorological Sub-Divisions:**
 - **Northwest India:** Western Himalayan Region (Jammu-Kashmir-Ladakh-Gilgit-Baltistan-Muzaffarabad, Himachal Pradesh and Uttarakhand); Punjab, Haryana-Chandigarh-Delhi; West Uttar Pradesh, East Uttar Pradesh, West Rajasthan and East Rajasthan.
 - **Central India:** West Madhya Pradesh, East Madhya Pradesh, Vidarbha and Chhattisgarh.
 - **East India:** Bihar, Jharkhand, Sub-Himalaya West Bengal & Sikkim; Gangetic West Bengal, Odisha and Andaman & Nicobar Islands.
 - **Northeast India:** Arunachal Pradesh, Assam & Meghalaya and Nagaland, Manipur, Mizoram & Tripura.
 - **West India:** Gujarat Region, Saurashtra & Kutch, Konkan & Goa, Madhya Maharashtra and Marathwada.
 - **South India:** Coastal Andhra Pradesh & Yanam, Telangana, Rayalaseema, Coastal Karnataka, North Interior Karnataka, South Interior Karnataka, Kerala & Mahe, Tamil Nadu, Puducherry & Karaikal and Lakshadweep.

SPATIAL DISTRIBUTION			
(% of Stations reporting)			
% Stations	Category	% Stations	Category
76-100	Widespread (WS/ Most Places)	26-50	Scattered (SCT/ A Few Places)
51-75	Fairly Widespread (FWS/ Many Places)	1-25	Isolated (ISOL)

Subdivision Warning	Dust Storm	Subdivision color
Heavy Rain	Strong Surface Winds	NO WARNING
Heavy Snow	Heat Wave	WATCH (BE UPDATED)
Thunderstorms & Lightning	Cold wave	ALERT (BE PREPARED)
Hailstorm	Fog	WARNING (TAKE ACTION)

Probabilistic Forecast	
Terms	Probability of Occurrence (%)
Unlikely	< 25
Likely	25 - 50
Very Likely	50 - 75
Most Likely	> 75

Flash Flood Risk	
	High Risk (Take Action)
	Moderate Risk (Be Prepared)
	Low Risk (Be Updated)