



Government of India  
Ministry of Earth Sciences



India Meteorological Department

## PRESS RELEASE-6

Time of issue: 1330 hours IST

Dated: 6<sup>th</sup> December, 2023

### Sub: Severe Cyclonic Storm “MICHAUNG” (pronounced as MIGJAUM) weakened into a Well Marked Low Pressure Area over Northeast Telangana

Yesterday's **Severe Cyclonic Storm** “MICHAUNG” (pronounced as MIGJAUM) over Westcentral & adjoining Southwest Bay of Bengal off south Andhra Pradesh coast moved northwards and crossed south Andhra Pradesh coast between Nellore and Machilipatnam, close to south of Bapatla during 1230 to 1430 hours IST of yesterday, the 5th December 2023 as a **Severe Cyclonic Storm** with maximum sustained wind speed of **90-100 kmph**. After landfall, it continued to move nearly northwards and weakened into a **Cyclonic Storm** over south Coastal Andhra Pradesh in the afternoon (1530 hours IST), further into a **Deep Depression** over Central parts of Coastal Andhra Pradesh in the mid-night (2330 hours IST) of the same day. It then moved north-northeastwards and weakened into a **Depression** over Northeast Telangana and adjoining areas of south Chhattisgarh, south Interior Odisha and coastal Andhra Pradesh in the early morning and further weakened into a **Well Marked Low Pressure Area** in the forenoon (0830 hours IST) of today, the 6<sup>th</sup> December, 2023.

The system is likely to continue to move nearly north-northeastwards and weaken further into a Low Pressure Area during next 12 hours.

### Past 24 hour accumulated Rainfall (in cm) recorded at 0830 IST of 6 Dec, 2023

**Telangana:** Aswaraopeta (dist B. Kothagudem) 34, Palawanacha (dist B. Kothagudem) 25, Chandrugonda (dist B. Kothagudem) 23, Kothagudem (dist B. Kothagudem) 22, Julurpad (dist B. Kothagudem) 20, Mulakalapalle (dist B. Kothagudem) 20, Aswapuram (dist B. Kothagudem) 19, Burgampadu (dist B. Kothagudem) 18, Bhadrachalam (dist B. Kothagudem) 18, Sathupalle (dist Khammam) 16, Tekulapalle (dist B. Kothagudem) 15, Madhira (dist Khammam) 14, Enkuru (dist Khammam) 14, Bonakal (dist Khammam) 13, Manuguru (dist B. Kothagudem) 12, Wyra (dist Khammam) 12, Pinapaka (dist B. Kothagudem) 10, Thollada (dist Khammam) 10, Konijerla (dist Khammam) 9, Gundala (dist B. Kothagudem) 8, Venkatapur (dist Mulugu) 7, Chinthakam (dist Khammam) 7, Yellandu (dist B. Kothagudem) 7

**Coastal Andhra Pradesh:** Bhimadole (dist Eluru) 24, Kukunoor (dist Eluru) 22, Narsapuram (dist West Godavari) 21, Chintalapudi (dist Eluru) 21, Narsipatnam (dist Anakapalli) 20, Bheemavaram (dist West Godavari) 20, Koyyalagudem (dist Eluru) 20,

Contact: Cyclone Warning Division, Office of the Director General of Meteorology,  
India Meteorological Department, Ministry of Earth Sciences.

Phone:(91) 11-24652484, FAX: (91) 11-24643128, 24623220, E-mail:cwdhq2008@gmail.com, Website:

[rsmcnewdelhi.imd.gov.in](http://rsmcnewdelhi.imd.gov.in)

Spatial rainfall distribution: Isolated: <25%, A few: 26-50%, Many: 51-75%, Most: 76-100%

Rainfall amount (mm): Heavy rain: 64.5 – 115.5, Very heavy rain: 115.6 – 204.4, Extremely heavy rain: 204.5 or more.

Amalapuram (dist B R Ambedkar Konaseema) 19, Anakapalle (dist Anakapalli) 19, Kunavaram (dist Alluri Sitharamaraju) 19, Yelamanchili (dist Anakapalli) 19, Sattenapalle (dist Palnadu) 18, Palakoderu (dist West Godavari) 18, Tanuku (dist West Godavari) 17, Kaikalur (dist Eluru) 16, Prathipadu (dist Kakinada) 16, Santhamaguluru (dist Bapatla) 16, Polavaram (dist Eluru) 16, Chodavaram (dist Anakapalli) 15, Visakhapatnam (dist Vishakhapatnam) 15, Denkada (dist Vizianagaram) 15, Chintur (dist Alluri Sitharamaraju) 15, Tadepalligudem (dist West Godavari) 14, Darsi (dist Prakasam) 14, Kakinada (dist Kakinada) 14, Anakapalle(a) (dist Anakapalli) 13, Velairpad (dist Eluru) 13, Srungavarapukota (dist Vizianagaram) 13, Tiruvuru (dist NTR District) 13, Tuni (dist Kakinada) 12, Chintapalle (dist Alluri Sitharamaraju) 12, Mentada (dist Vizianagaram) 12, Paderu (dist Alluri Sitharamaraju) 12, Nuzvid (dist Eluru) 12, Nandigama (dist NTR District) 11, Eluru (dist Eluru) 11, Vararamachandrapur (dist Alluri Sitharamaraju) 11, Guntur (dist Guntur) 11, Bondapalle (dist Vizianagaram) 11, Gajapathinagaram (dist Vizianagaram) 11, Vepada (dist Vizianagaram) 11, Amaravati (dist Guntur) 11, Vizianagaram (dist Vizianagaram) 10, Bheemunipatnam (dist Vishakhapatnam) 10, Mangalagiri (dist Guntur) 10, Piduguralla (dist Palnadu) 10, Araku Valley (dist Alluri Sitharamaraju) 10, Yanam (dist Yanam) 10, Pusapatirega (dist Vizianagaram) 9, Peddapuram (dist Kakinada) 9, Addanki (dist Bapatla) 9, Gantiyada (dist Vizianagaram) 9, Mundlamuru (dist Prakasam) 9, Lam(a) (dist Guntur) 9, Podili (dist Prakasam) 8, Atchampet (dist Palnadu) 8, Vijayawada A.p. (NTR District) 8, Garividi (dist Vizianagaram) 8, Ranastalam (dist Srikakulam) 8, Nellimarla (dist Vizianagaram) 7, Jangamaheswarapuram (dist Palnadu) 7, Cheepurupalle (dist Vizianagaram) 7, Visakhapatnam Ap (dist Vishakhapatnam) 7, Gudivada (dist Krishna) 7.

**Tamil Nadu:** Virudunagar (dist Virudhunagar), Ponnamaravathi (dist Pudukkottai), Natham (dist Dindigul), Singampunari (dist Sivagangai), Sathiar (dist Madurai), Arimalam (dist Pudukkottai) 7 each,

**Odisha:** Pottangi (Koraput) 11, Similiguda (Koraput) 9, Koraput (Koraput) 7

### **Warnings:**

#### **(i) Rainfall Warning (graphics enclosed):**

- **North Coastal Andhra Pradesh:** Light to moderate rainfall at many places with **heavy rainfall** at isolated places likely over north coastal Andhra Pradesh on 6<sup>th</sup> December and decrease
- **Odisha:** Light to moderate rainfall at many places with isolated **heavy rainfall** is likely over Odisha on 6<sup>th</sup> December.
- **Chhattisgarh:** Light to moderate rainfall at many places with isolated **heavy rainfall** is likely over Chhattisgarh on 6<sup>th</sup> December.

#### **(ii) Wind warning:**

- **Northeast Telangana and adjoining areas of south Chhattisgarh, south Interior Odisha and Coastal Andhra Pradesh:** **Strong wind** speed reaching **25-35 kmph gusting to 45 kmph** is likely to prevail during next 6 hours and gradually decreases thereafter.

---

Contact: Cyclone Warning Division, Office of the Director General of Meteorology,  
India Meteorological Department, Ministry of Earth Sciences.

Phone: (91) 11-24652484, FAX: (91) 11-24643128, 24623220, E-mail: [cwdhq2008@gmail.com](mailto:cwdhq2008@gmail.com), Website:

[rsmcnewdelhi.imd.gov.in](http://rsmcnewdelhi.imd.gov.in)

Spatial rainfall distribution: Isolated: <25%, A few: 26-50%, Many: 51-75%, Most: 76-100%

Rainfall amount (mm): Heavy rain: 64.5 – 115.5, Very heavy rain: 115.6 – 204.4, Extremely heavy rain: 204.5 or more.

- **West Central Bay of Bengal along & off north Andhra Pradesh and south Odisha Coasts:**

**Strong wind** speed reaching **25-35 kmph gusting to 45 kmph** is likely to prevail during next 06 hours. It would gradually decrease thereafter.

**(iii) Sea Condition:**

- **West Central Bay of Bengal along & off north Andhra Pradesh and Odisha Coasts:**

**Moderate sea condition** is likely to prevail over the region during next 06 hours and would gradually improve thereafter.

*This is last press release in association with this system. However, regular bulletins in association with its remnant shall continue from National Weather Forecasting Centre and concerned Meteorological Centres of India Meteorological Department.*

*For regular updates kindly visit [www.rsmcnewdelhi.imd.gov.in](http://www.rsmcnewdelhi.imd.gov.in) and [www.mausam.imd.gov.in](http://www.mausam.imd.gov.in)*

---

Contact: Cyclone Warning Division, Office of the Director General of Meteorology,  
India Meteorological Department, Ministry of Earth Sciences.

Phone:(91) 11-24652484, FAX: (91) 11-24643128, 24623220, E-mail:cwdhq2008@gmail.com, Website:  
[rsmcnewdelhi.imd.gov.in](http://rsmcnewdelhi.imd.gov.in)

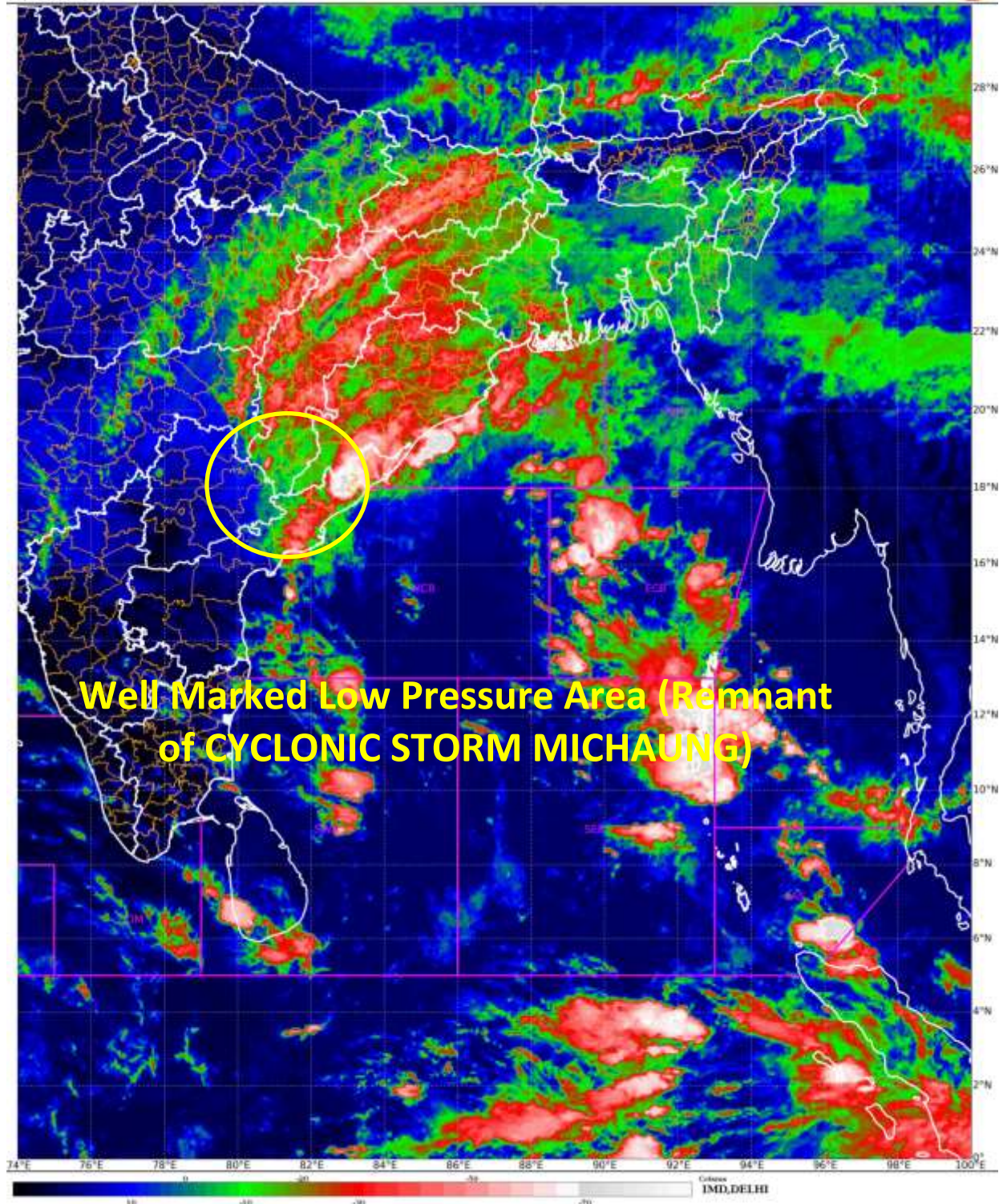
Spatial rainfall distribution: Isolated: <25%, A few: 26-50%, Many: 51-75%, Most: 76-100%

Rainfall amount (mm): Heavy rain: 64.5 – 115.5, Very heavy rain: 115.6 – 204.4, Extremely heavy rain: 204.5 or more.



SAT : INSAT-3D IMG  
IMG\_TIR1\_TEMP 10.8 um  
LIC Mercator

06-12-2023(0500 to 0527) GMT  
06-12-2023(1030 to 1057) IST



**Well Marked Low Pressure Area (Remnant  
of CYCLONIC STORM MICHAUNG)**

Contact: Cyclone Warning Division, Office of the Director General of Meteorology,  
India Meteorological Department, Ministry of Earth Sciences.

Phone:(91) 11-24652484, FAX: (91) 11-24643128, 24623220, E-mail:cwdhq2008@gmail.com, Website:  
[rsmcnewdelhi.imd.gov.in](http://rsmcnewdelhi.imd.gov.in)

Spatial rainfall distribution: Isolated: <25%, A few: 26-50%, Many: 51-75%, Most: 76-100%

Rainfall amount (mm): Heavy rain: 64.5 – 115.5. Very heavy rain: 115.6 – 204.4. Extremely heavy rain: 204.5 or more.





## OBSERVED TRACK IN ASSOCIATION WITH SEVERE CYCLONIC STORM "MICHAUNG" OVER BAY OF BENGAL DURING 1<sup>ST</sup> – 6<sup>TH</sup> DECEMBER, 2023



DATE/TIME IN UTC

IST=UTC + 0530

L: LOW PRESSURE AREA

WML: WELL MARKED LOW PRESSURE AREA

D: DEPRESSION (17-27 KT)

DD: DEEP DEPRESSION (28-33 KT)

CS: CYCLONIC STORM (34-47 KT)

SCS: SEVERE CYCLONIC STORM (48-63KT)

VSCS: VERY SEVERE CYCLONIC STORM (64-89 KT)

ESCS: EXTREMELY SEVERE CYCLONIC STORM (90-119 KT)

SuCS: SUPER CYCLONIC STORM ( $\geq$  120 KT)

● LESS THAN 34 KT

⊙ 34-47 KT

⊙  $\geq$  48 KT

— OBSERVED TRACK

— FORECAST TRACK

▲ CONE OF UNCERTAINTY

Contact: Cyclone Warning Division, Office of the Director General of Meteorology,  
India Meteorological Department, Ministry of Earth Sciences.

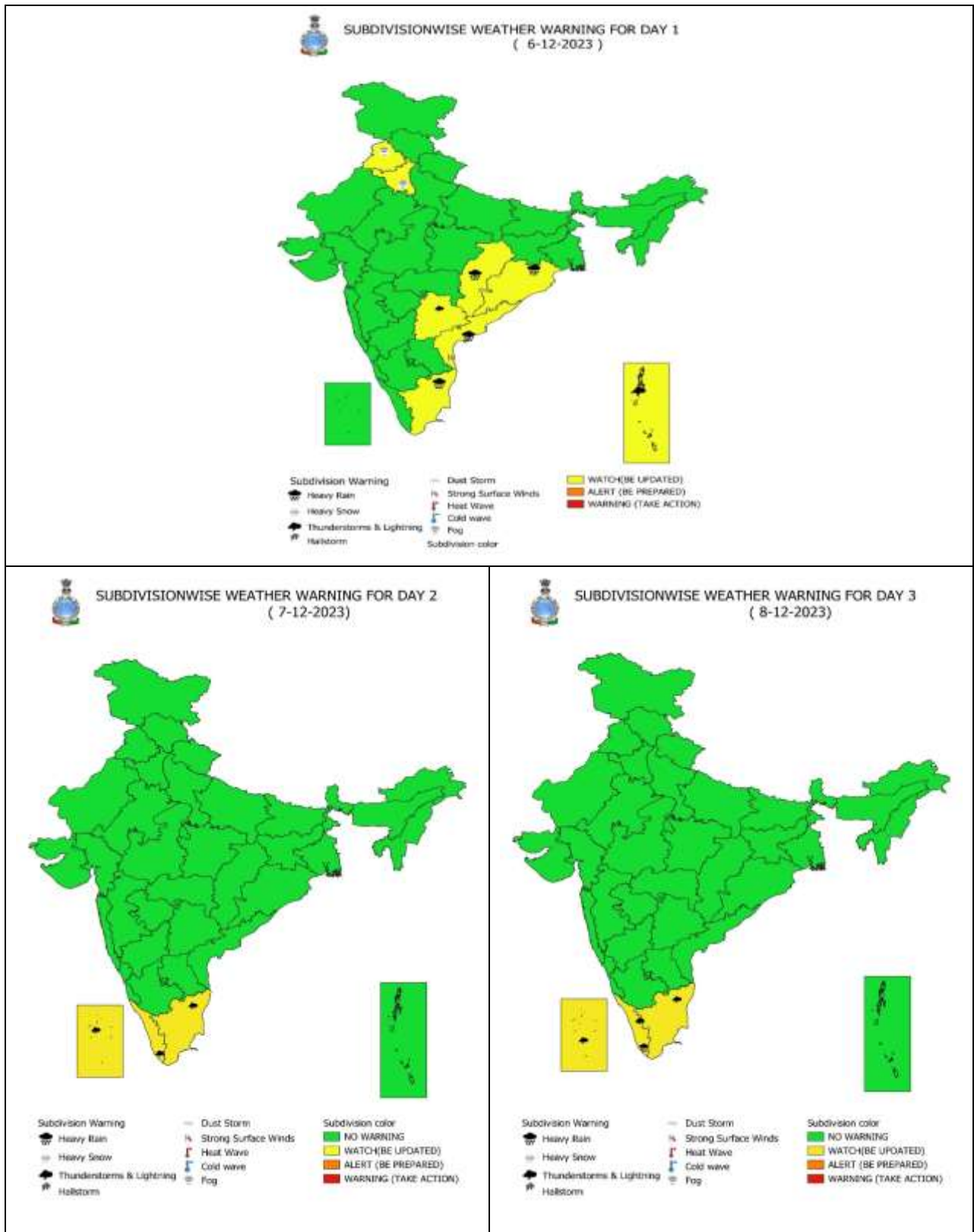
Phone:(91) 11-24652484, FAX: (91) 11-24643128, 24623220, E-mail:cwdhq2008@gmail.com, Website:

[rsmcnewdelhi.imd.gov.in](http://rsmcnewdelhi.imd.gov.in)

Spatial rainfall distribution: Isolated: <25%, A few: 26-50%, Many: 51-75%, Most: 76-100%

Rainfall amount (mm): Heavy rain: 64.5 – 115.5. Very heavy rain: 115.6 – 204.4. Extremely heavy rain: 204.5 or more.

# Weather Warning Graphics

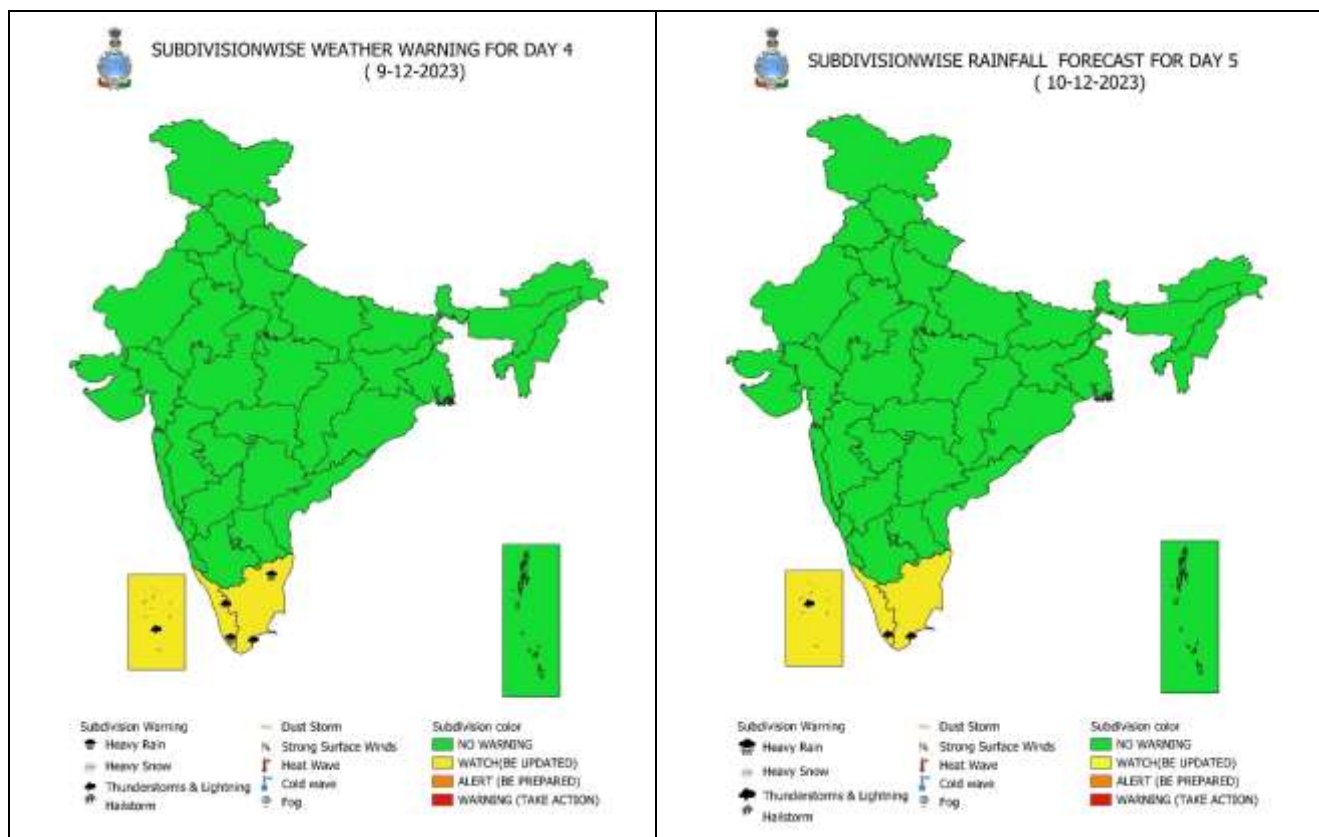


Contact: Cyclone Warning Division, Office of the Director General of Meteorology,  
India Meteorological Department, Ministry of Earth Sciences.

Phone:(91) 11-24652484, FAX: (91) 11-24643128, 24623220, E-mail:cwdhq2008@gmail.com, Website:  
[rsmcnewdelhi.imd.gov.in](http://rsmcnewdelhi.imd.gov.in)

Spatial rainfall distribution: Isolated: <25%, A few: 26-50%, Many: 51-75%, Most: 76-100%

Rainfall amount (mm): Heavy rain: 64.5 – 115.5. Very heavy rain: 115.6 – 204.4. Extremely heavy rain: 204.5 or more.



## WARNING



- |   |   |   |   |
|---|---|---|---|
|  <b>Heavy Rain</b>   |  <b>Heavy Snow</b> |  <b>Thunderstorm</b> |  <b>Dust Storm</b>   |
|  <b>Strong Winds</b> |  <b>Visibility</b> |  <b>Cyclone</b>      |  <b>Squall/ Hail</b> |
|  <b>Frost</b>        |  <b>Cold Wave</b>  |  <b>Heat Wave</b>    |  <b>Sea State</b>    |

Contact: Cyclone Warning Division, Office of the Director General of Meteorology,  
 India Meteorological Department, Ministry of Earth Sciences.

Phone:(91) 11-24652484, FAX: (91) 11-24643128, 24623220, E-mail:cwdhq2008@gmail.com, Website:  
[rsmcnewdelhi.imd.gov.in](http://rsmcnewdelhi.imd.gov.in)

Spatial rainfall distribution: Isolated: <25%, A few: 26-50%, Many: 51-75%, Most: 76-100%

Rainfall amount (mm): Heavy rain: 64.5 – 115.5, Very heavy rain: 115.6 – 204.4, Extremely heavy rain: 204.5 or more.