



Government of India
Ministry of Earth Sciences



India Meteorological Department

PRESS RELEASE-1

Time of issue: 1600 hours IST

Dated: 19th July, 2024

Sub: Depression over Northwest and adjoining Westcentral Bay of Bengal off Odisha and adjoining North Andhra Pradesh coasts

A low pressure area formed over northwest and adjoining West Central Bay of Bengal off South Odisha coast in the morning (0830 hours IST) of 15th July, 2024. It lay as a well marked low pressure area over central and adjoining north Bay of Bengal in the evening (1730 hours IST) of 18th July, 2024. It moved northwestwards and concentrated into a depression over northwest and adjoining westcentral Bay of Bengal off Odisha and adjoining north Andhra Pradesh coasts in the morning (0830 hours IST) of today, the 19th July, 2024. Continuing to move further northwestwards with a speed of 7 kmph during past 3 hours and lay centered at 1130 hours IST of today, the 19th July, 2024 over the same region near latitude 19.3°N and longitude 86.1°E, about 60 km south-southeast of Puri (Odisha), 130 km East of Gopalpur (Odisha), 130 km south-southwest of Paradip (Odisha) and 230 km east-northeast of Kalingapatnam (Andhra Pradesh).

It is likely to move northwestwards and cross Odisha coast near Puri as a depression during early morning hours of tomorrow, the 20th July, 2024. Thereafter, it would move west-northwestwards across Odisha & Chhattisgarh and weaken gradually during subsequent 24 hours.

Warnings:

(i) Rainfall warning

Odisha:

- ❖ **South Odisha:** Light to moderate rainfall at most places with heavy to very heavy rainfall at a few places is very likely over South Odisha on 19th and 20th July and extremely heavy rainfall at isolated places on 19th July.
- ❖ **North Odisha:** Light to moderate rainfall is very likely at most places with heavy to very heavy rainfall at isolated places on 19th and 20th July.

Gangetic West Bengal: Light to moderate rainfall is very likely at most places on 19th and 20th July.

Andhra Pradesh:

- ❖ **North Coastal Andhra Pradesh:** Light to moderate rainfall at most places with heavy to very heavy rainfall at a few places is most likely on 19th & 20th July and extremely heavy rainfall at isolated places on 19th July.
- ❖ **South Coastal Andhra Pradesh:** Light to moderate rainfall at most places with heavy rainfall at isolated places is likely over South Coastal Andhra Pradesh on 19th and 20th July.

Jharkhand: Light to moderate rainfall at most places with heavy rainfall at isolated places is very likely on 20th July.

Contact: Cyclone Warning Division, Office of the Director General of Meteorology, India Meteorological Department, Ministry of Earth Sciences.

E-mail: cyclonewarningdivision@gmail.com, Website: rsmcnewdelhi.imd.gov.in

Spatial rainfall distribution: Isolated: <25%, A few: 26-50%, Many: 51-75%, Most: 76-100%

Rainfall amount (mm): Heavy rain: 64.5 – 115.5, Very heavy rain: 115.6 – 204.4, Extremely heavy rain: 204.5 or more.

Chattisgarh: Light to moderate rainfall at most places with heavy to very heavy rainfall at isolated places is very likely on 19th and 20th July and extremely heavy rainfall at isolated places on 19th July.

Telangana & Vidarbha: Light to moderate rainfall at most places with heavy to very heavy rainfall at a few places and extremely heavy rainfall at isolated places is very likely on 19th July. Light to moderate rainfall at most places with heavy to extremely heavy rainfall at isolated places is very likely on 20th July.

(ii) Wind warning

Squally weather with wind speed reaching 45-55 kmph gusting to 65 kmph is very likely to prevail over northwest and adjoining westcentral Bay of Bengal and along and off North Andhra Pradesh, Odisha, West Bengal & adjoining Bangladesh coasts on 19th and 20th July and would decrease gradually thereafter.

(iv) Sea Condition: Rough to very rough sea condition is very likely to prevail over northwest and adjoining westcentral Bay of Bengal and along and off North Andhra Pradesh, Odisha, West Bengal & adjoining Bangladesh coasts on 19th and 20th July and would improve gradually thereafter.

(v) Fishermen Warning

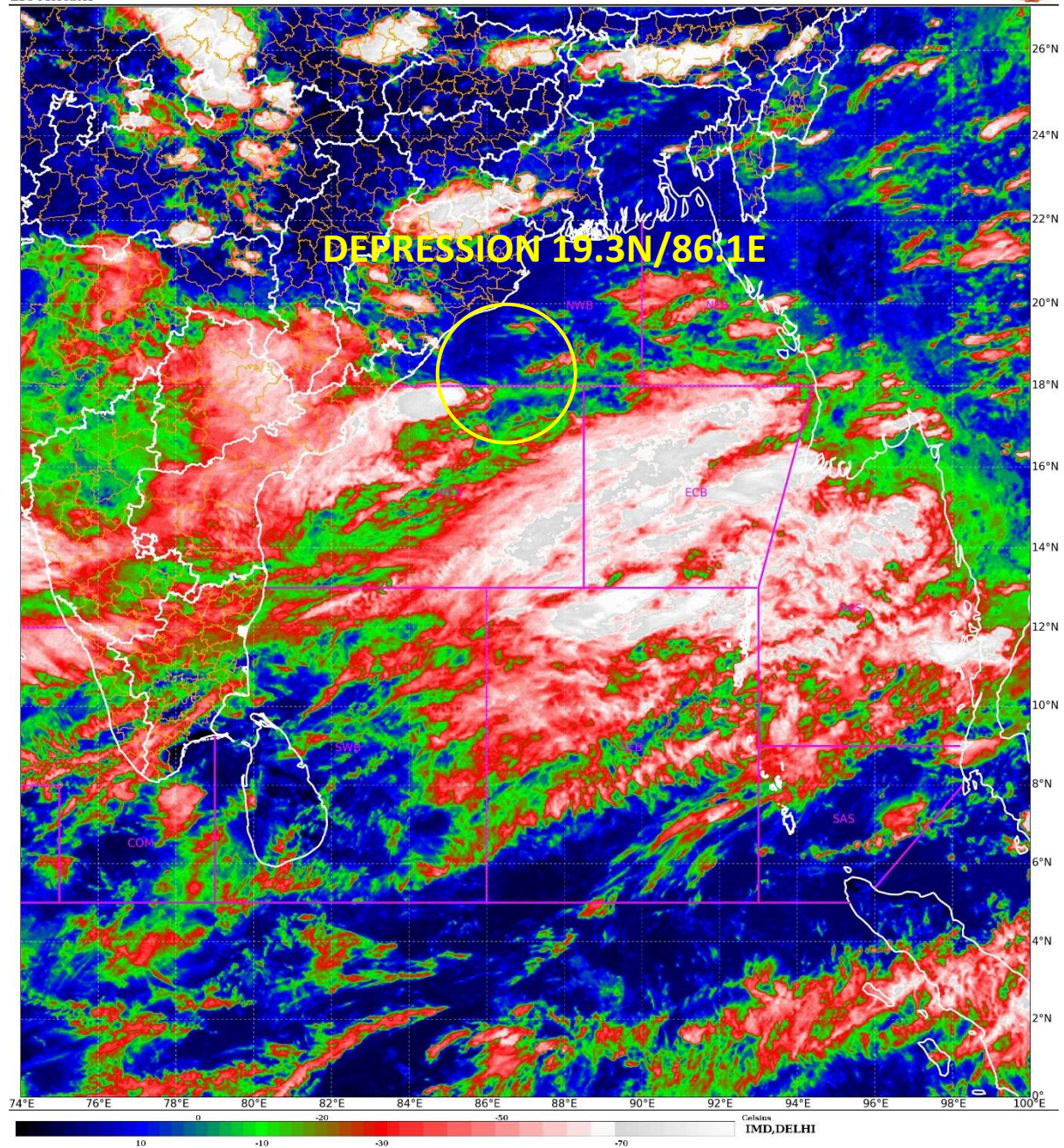
Fishermen are advised not to venture into northwest and adjoining westcentral Bay of Bengal and along & off North Andhra Pradesh, Odisha, West Bengal & adjoining Bangladesh coasts on 19th and 20th July.

The next press release will be issued at 1430 hrs IST of tomorrow 20th July, 2024.

For regular updates kindly visit www.rsmcnewdelhi.imd.gov.in and www.mausam.imd.gov.in

SAT : INSAT-3DR IMG
IMG_TIR1_TEMP 10.8 um
L1C Mercator

19-07-2024/(0745 to 0812) GMT
19-07-2024/(1315 to 1342) IST



Contact: Cyclone Warning Division, Office of the Director General of Meteorology, India Meteorological Department, Ministry of Earth Sciences.

E-mail: cyclonewarningdivision@gmail.com, Website: rsmcnewdelhi.imd.gov.in

Spatial rainfall distribution: Isolated: <25%, A few: 26-50%, Many: 51-75%, Most: 76-100%

Rainfall amount (mm): Heavy rain: 64.5 – 115.5, Very heavy rain: 115.6 – 204.4, Extremely heavy rain: 204.5 or more.



OBSERVED AND FORECAST TRACK OF DEPRESSION OVER NORTHWEST AND ADJOINING WESTCENTRAL BAY OF BENGAL OFF ODISHA AND ADJOINING NORTH ANDHRA PRADESH COASTS BASED ON 0600 UTC OF 19TH JULY, 2024.



DATE/TIME IN UTC

IST=UTC + 0530

L: LOW PRESSURE AREA

WML: WELL MARKED LOW PRESSURE AREA

D: DEPRESSION (17-27 KT)

DD: DEEP DEPRESSION (28-33 KT)

CS: CYCLONIC STORM (34-47 KT)

SCS: SEVERE CYCLONIC STORM (48-63KT)

VSCS: VERY SEVERE CYCLONIC STORM (64-89 KT)

ESCS: EXTREMELY SEVERE CYCLONIC STORM (90-119 KT)

SuCS: SUPER CYCLONIC STORM (≥ 120 KT)

LESS THAN 34 KT

34-47 KT

≥ 48 KT

OBSERVED TRACK

FORECAST TRACK

CONE OF UNCERTAINTY

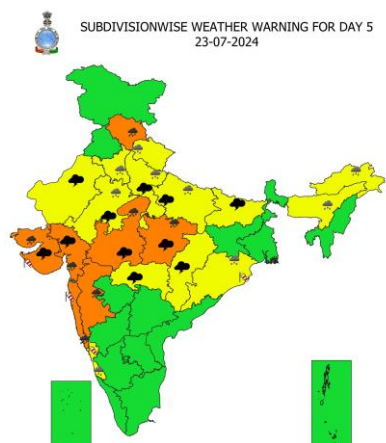
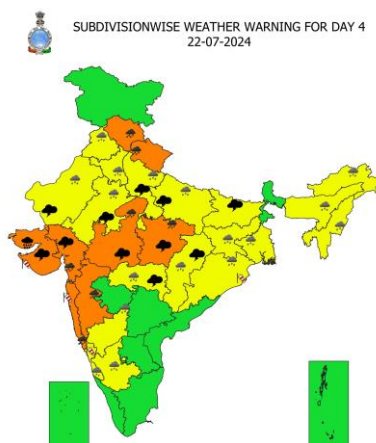
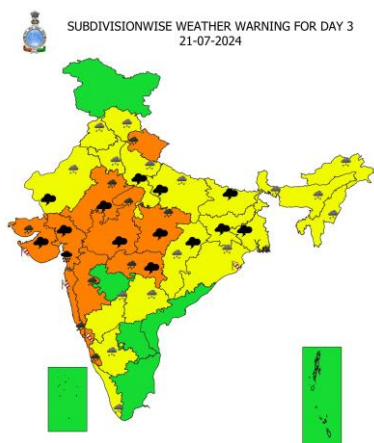
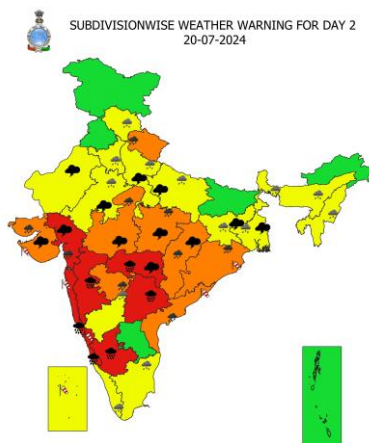
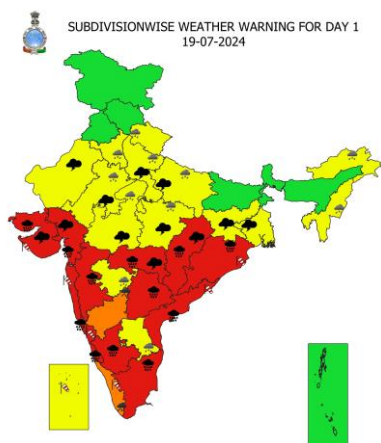
Forecast	DISTANCE (KM) AND DIRECTION FROM STATIONS			
Date and Time (UTC)	PURI	GOPALPUR	PARADIP (CWR)	KALINGAPATAM
19.07.24/0600	60, SSE	130, E	130, SSW	230, ENE

Contact: Cyclone Warning Division, Office of the Director General of Meteorology, India Meteorological Department, Ministry of Earth Sciences.

E-mail: cyclonewarningdivision@gmail.com, Website: rsmcnwdelhi.imd.gov.in

Spatial rainfall distribution: Isolated: <25%, A few: 26-50%, Many: 51-75%, Most: 76-100%

Rainfall amount (mm): Heavy rain: 64.5 – 115.5, Very heavy rain: 115.6 – 204.4, Extremely heavy rain: 204.5 or more.



Contact: Cyclone Warning Division, Office of the Director General of Meteorology, India Meteorological Department, Ministry of Earth Sciences.

E-mail: cyclonewarningdivision@gmail.com, Website: rsmcnwdelhi.imd.gov.in

Spatial rainfall distribution: Isolated: <25%, A few: 26-50%, Many: 51-75%, Most: 76-100%

Rainfall amount (mm): Heavy rain: 64.5 – 115.5, Very heavy rain: 115.6 – 204.4, Extremely heavy rain: 204.5 or more.

Fishermen Warning Graphics

