

Government of India
Ministry of Earth Sciences
India Meteorological Department



Press Release

Date: 18th August, 2024

Time of Issue: 1330 hours IST

Subject: (i) Low Pressure Area over south Bangladesh likely to cause heavy to very heavy rainfall over East India during next 3 days.
(ii) Isolated heavy to very heavy rainfall very likely over Kerala, Tamil Nadu and Lakshadweep during next 2-3 days.

Realised weather during past 24 hours till 0830 hours IST of today (Annexure I)

Heavy to very heavy rainfall at isolated places over Bihar, Andaman & Nicobar Islands; **Heavy rainfall** at isolated places over East Uttar Pradesh, Tamil Nadu, Chhattisgarh, Coastal Andhra Pradesh & Yanam, East Madhya Pradesh, West Rajasthan, Telangana, South Interior Karnataka, Madhya Maharashtra, Marathwada, Nagaland, Manipur, Mizoram & Tripura.

Weather Systems:

- ✓ The Low Pressure area over south Bangladesh & neighbourhood persists over the same region at 0830 hrs IST of today. It is likely to move slowly north-northwestwards and become a Well-marked Low Pressure area over Bangladesh & adjoining Gangetic West Bengal by 19th August. Thereafter, it is likely to move west-northwestwards across Gangetic West Bengal, Jharkhand & adjoining Bihar and Uttar Pradesh & adjoining Madhya Pradesh during subsequent 3-4 days.
- ✓ The **monsoon trough** lies near its normal position at mean sea level.
- ✓ A cyclonic circulation over Southwest Pakistan & neighbourhood in lower tropospheric levels.
- ✓ The cyclonic circulation over North Interior Karnataka & adjoining Telangana in lower tropospheric levels. A trough runs from above cyclonic circulation over North Interior Karnataka & adjoining Telangana to Southeast Arabian Sea across Kerala extending upto 1.5 km above mean sea level.

Forecast & Warnings (upto 7 days):

❖ **Northwest India**

- ✓ Fairly widespread to widespread light/moderate rainfall very likely over Jammu-Kashmir-Ladakh-Gilgit-Baltistan-Muzaffarabad, Himachal Pradesh, Uttarakhand, East Uttar Pradesh; scattered to fairly widespread rainfall over West Uttar Pradesh; isolated to scattered rainfall over Punjab, Haryana-Chandigarh-Delhi, Rajasthan during the week.
- ✓ Isolated **heavy rainfall** very likely over Jammu division on 18th & 19th; Himachal Pradesh and West Uttar Pradesh during 18th-21st; Uttarakhand during 18th-24th; Punjab, Haryana-Chandigarh on 20th & 21st; East Uttar Pradesh during 21st-24th; East Rajasthan during 22nd-24th August.

- ✓ Isolated **very heavy rainfall** also very likely over East Uttar Pradesh during 18th -20th; Uttarakhand on 20th & 21st August.

❖ **West & Central India**

- ✓ Fairly widespread to widespread light/moderate rainfall very likely over central India; scattered to fairly widespread rainfall over West India during the week.
- ✓ Isolated **heavy rainfall** very likely over Madhya Pradesh during the week; Vidarbha on 18th & 24th; Chhattisgarh during 18th-20th, 23rd & 24th; Madhya Maharashtra, Marathwada on 18th & 19th; Konkan & Goa during 19th-22nd and Gujarat Region on 21st & 22nd August.

❖ **East & Northeast India**

- ✓ Fairly widespread to widespread light/moderate rainfall very likely over east India and scattered to fairly widespread rainfall over northeast during the week.
- ✓ Isolated **heavy rainfall** very likely over Bihar during 18th-23rd; Jharkhand during 18th-21st; Odisha during 18th-20th, 23rd & 24th; Sub-Himalayan West Bengal & Sikkim during 19th-21st; Gangetic West Bengal on 21st; Assam & Meghalaya during next 7 days; Nagaland, Manipur, Mizoram & Tripura during 18th -23rd; Arunachal Pradesh during 21st-24th August.
- ✓ Isolated **very heavy rainfall** also very likely over Bihar during 21st -22nd; Gangetic West Bengal during 18th-20th; Nagaland, Manipur, Mizoram & Tripura on 18th & 19th; Jharkhand on 19th & 20th August.

❖ **South Peninsular India:**

- ✓ Fairly widespread to widespread light/moderate rainfall very likely over Kerala & Mahe, Lakshadweep; scattered to fairly widespread rainfall over Tamil Nadu, Puducherry & Karaikal, Karnataka; isolated to scattered rainfall over Telangana, Coastal Andhra Pradesh & Yanam, Rayalaseema during the week.
- ✓ Isolated **heavy rainfall** very likely over Tamil Nadu, Puducherry & Karaikal and Telangana on 18th & 20th; Kerala & Mahe, Lakshadweep, Rayalaseema on 18th; Coastal Andhra Pradesh & Yanam on 18th & 19th; Coastal Karnataka during 19th-21st; South Interior Karnataka on 19th & 20th August.
- ✓ Isolated **very heavy rainfall** also very likely over Tamil Nadu, Puducherry & Karaikal on 19th; Kerala & Mahe and Lakshadweep on 19th & 20th August.

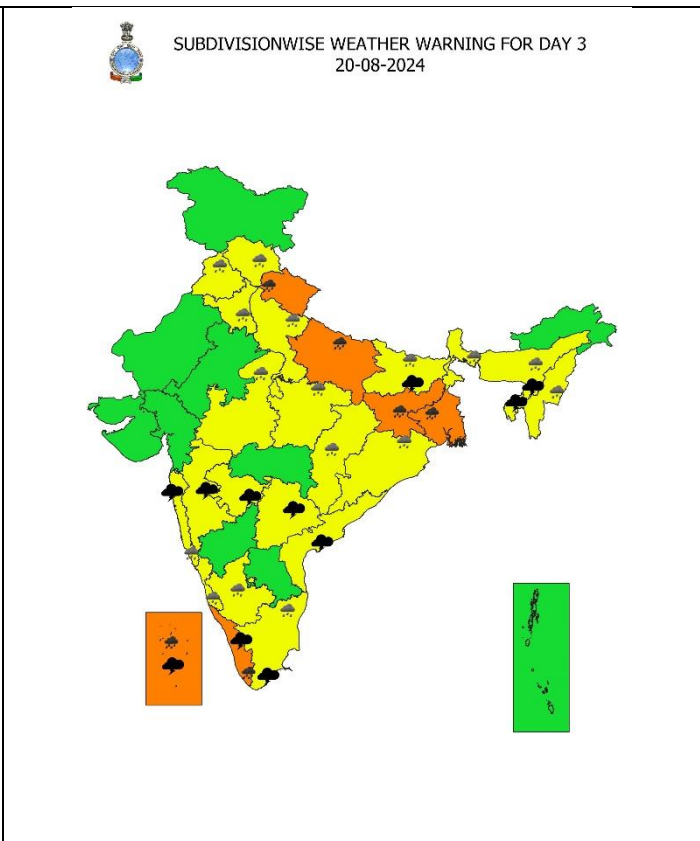
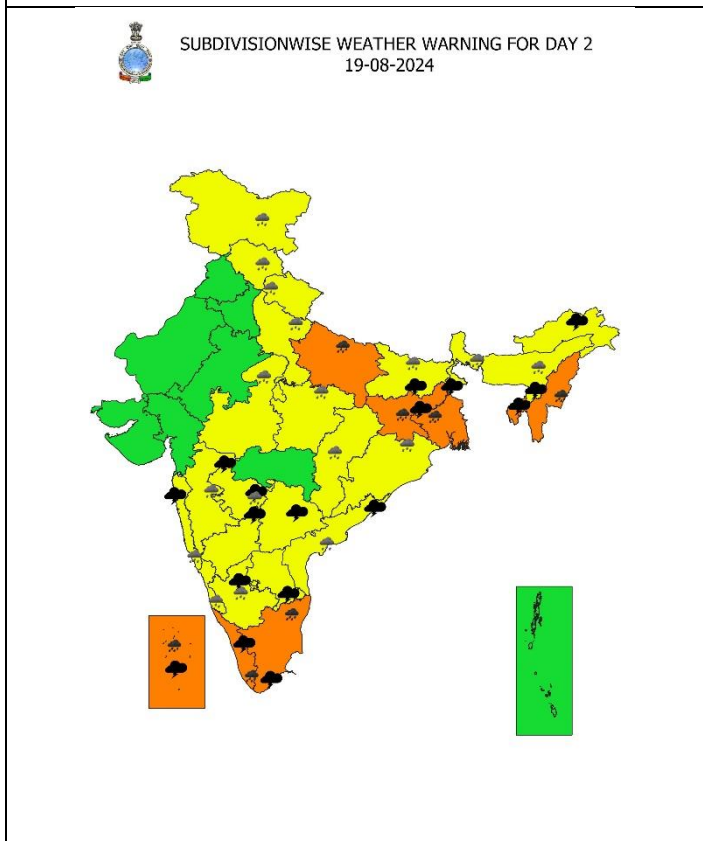
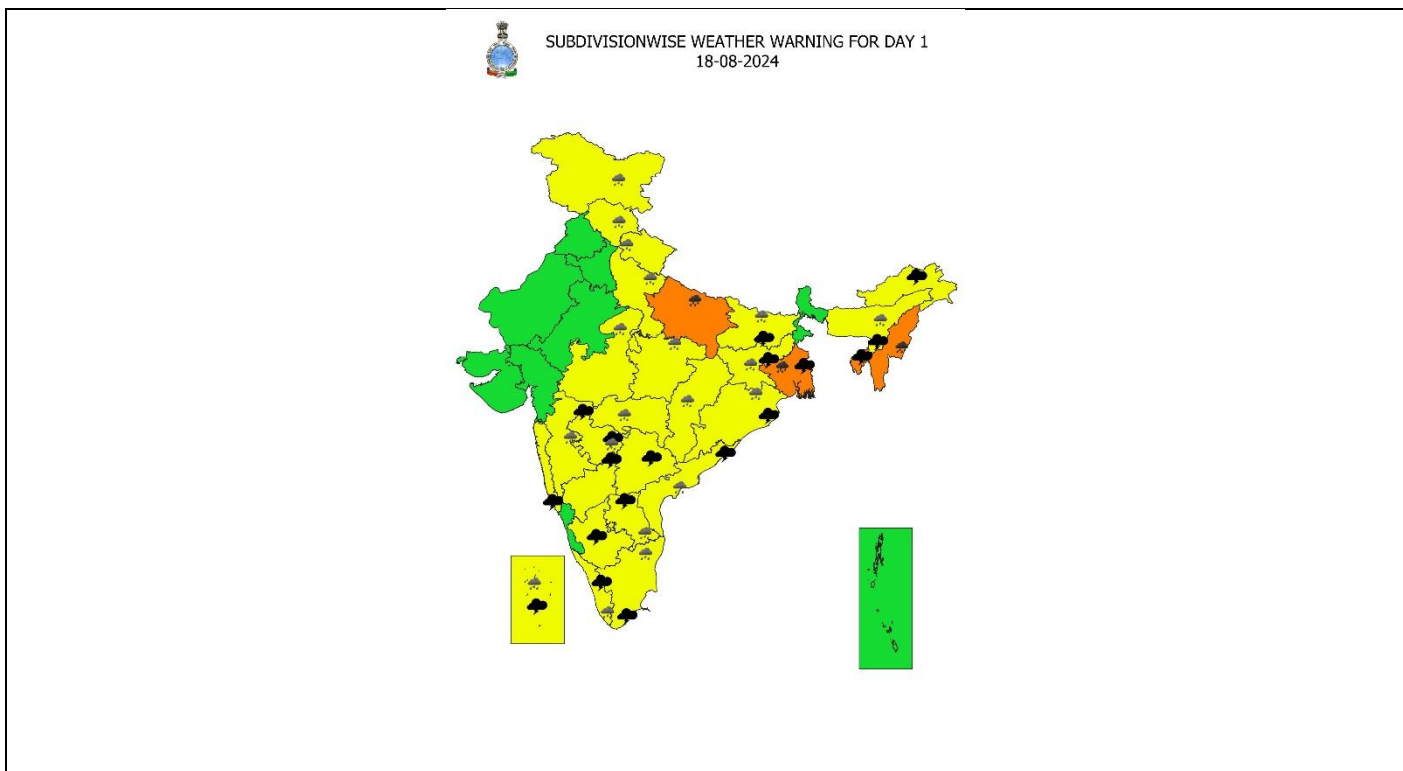
For more details, kindly refer: https://mausam.imd.gov.in/responsive/all_india_forcast_bulletin.php

Significant Rainfall recorded during past 24 hours till 0830 hours IST of today 18.08.2024 (in cm):

- ❖ **Bihar:** Ramnagar (dist West Champaran) 15, Koilwar (dist Bhojpur) 14, Silao (dist Nalanda) 13, Tribeni/balmikinagar (dist West Champaran) 12, Giriyak (dist Nalanda) 11, Rajgir (dist Nalanda) 11, Kaler (dist Arwal) 10, Nawada (dist Nawada) 9, Hilsa (dist Nalanda) 9, Chanpatia (dist West Champaran) 9, Noorsarai (dist Nalanda) 9, Parbalpur (dist Nalanda) 9, Dhanarua (dist Patna) 9, Ben (dist Nalanda) 8, Raghunathpur (dist Siwan) 8, Katra (dist Muzaffarpur) 8, Bettiah (dist West Champaran) 8, Buxar (dist Buxar) 7, Ghanharia (dist Madhepura) 7, Bihta (dist Patna) 7, Chakki (dist Buxar) 7, Hisua (dist Nawada) 7, Simri (dist Buxar) 7, Gaunaha (dist West Champaran) 7, Sattar Kataiya (dist Saharsa) 7, Adapur (dist East Champaran) 7, Nardiganj (dist Nawada) 7, Sikta (dist West Champaran) 7, Saraigarh Bhaptiyahi (dist Supaul) 7,
- ❖ **Andaman & Nicobar Islands:** Hut Bay (dist South Andaman) 10
- ❖ **East Uttar Pradesh:** Sultanpur 9, Ballia 9, Ghazipur 7,
- ❖ **Marathwada:** Ashti (dist Beed) 9,
- ❖ **Tamil Nadu:** Perambalur (dist Perambalur) 9, Tirumayam (dist Pudukkottai) 8,
- ❖ **Chhattisgarh:** Rajpur (dist Balrampur) 9,
- ❖ **Coastal Andhra Pradesh & Yanam:** Komarada (dist Parvathipuram Manyam) 8, Markapur (dist Prakasam) 8,
- ❖ **East Madhya Pradesh:** Mohkheda (dist Chhindwara) 7, Shahdole (sohagpur) (dist Shahdol) 7, Channodi (dist Shahdol) 7,
- ❖ **West Rajasthan:** Bhopalgarh (Jodhpur) 8, Sum (Jaisalmer) 7,
- ❖ **Telangana:** Jagadevpur (dist Siddipet) 7,
- ❖ **South Interior Karnataka:** Bargur (dist Tumakuru) 7,
- ❖ **Madhya Maharashtra:** Satara - Imd Obsy (dist Satara) 8, Karad (dist Satara) 7,
- ❖ **Nagaland, Manipur, Mizoram & Tripura:** Bishnupur (dist Bishnupur) 7,

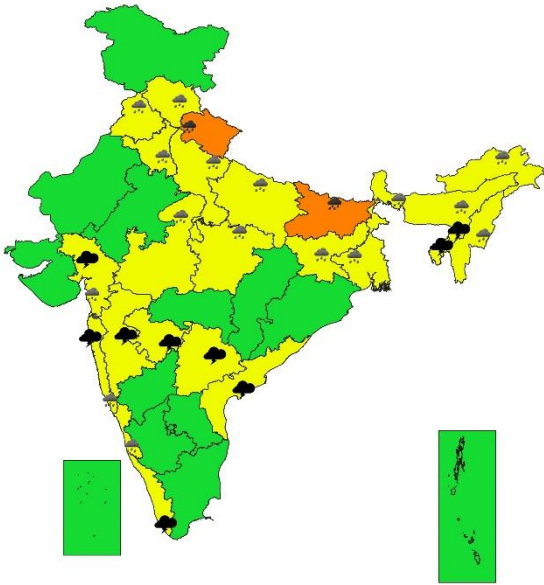
7 Days Rainfall Forecast								
S. No.	Subdivision	18-Aug	19-Aug	20-Aug	21-Aug	22-Aug	23-Aug	24-Aug
		Day 1	Day 2	Day 3	Day 4	Day 5	Day 6	Day 7
1	ANDAMAN & NICOBAR ISLANDS	WS	FWS	FWS	FWS	FWS	WS	WS
2	ARUNACHAL PRADESH	SCT	SCT	SCT	FWS	FWS	FWS	FWS
3	ASSAM & MEGHALAYA	FWS	FWS	FWS	FWS	FWS	WS	WS
4	NAGALAND, MANIPUR, MIZORAM & TRIPURA	FWS	FWS	FWS	FWS	WS	WS	FWS
5	SUB-HIMALAYAN WEST BENGAL & SIKKIM	FWS	FWS	WS	WS	WS	WS	WS
6	GANGETIC WEST BENGAL	WS	WS	WS	WS	FWS	FWS	WS
7	ODISHA	FWS	FWS	FWS	SCT	SCT	FWS	FWS
8	JHARKHAND	FWS	WS	WS	FWS	FWS	WS	WS
9	BIHAR	FWS	FWS	FWS	FWS	FWS	FWS	FWS
10	EAST UTTAR PRADESH	WS	WS	WS	FWS	FWS	FWS	FWS
11	WEST UTTAR PRADESH	SCT	FWS	FWS	FWS	FWS	FWS	FWS
12	UTTARAKHAND	FWS	FWS	WS	FWS	FWS	FWS	FWS
13	HARYANA CHANDIGARH & DELHI	ISOL	ISOL	SCT	SCT	SCT	SCT	ISOL
14	PUNJAB	ISOL	ISOL	SCT	SCT	SCT	ISOL	ISOL
15	HIMACHAL PRADESH	FWS	FWS	FWS	FWS	FWS	SCT	SCT
16	JAMMU & KASHMIR AND LADAKH	FWS	FWS	SCT	SCT	SCT	ISOL	ISOL
17	WEST RAJASTHAN	ISOL	ISOL	ISOL	ISOL	ISOL	ISOL	ISOL
18	EAST RAJASTHAN	ISOL	ISOL	ISOL	SCT	SCT	FWS	FWS
19	WEST MADHYA PRADESH	FWS	FWS	WS	WS	WS	WS	WS
20	EAST MADHYA PRADESH	FWS	FWS	WS	WS	WS	WS	WS
21	GUJARAT REGION	SCT	SCT	SCT	FWS	FWS	FWS	FWS
22	SAURASHTRA & KUTCH	SCT	SCT	SCT	FWS	FWS	SCT	SCT
23	KONKAN & GOA	FWS	FWS	WS	WS	WS	WS	WS
24	MADHYA MAHARASHTRA	FWS	WS	WS	FWS	SCT	FWS	WS
25	MARATHAWADA	FWS	FWS	FWS	SCT	SCT	SCT	FWS
26	VIDARBHA	FWS	FWS	FWS	WS	WS	WS	WS
27	CHHATTISGARH	FWS	FWS	FWS	FWS	FWS	FWS	FWS
28	COASTAL ANDHRA PRADESH & YANAM	SCT	SCT	SCT	SCT	SCT	SCT	FWS
29	TELANGANA	SCT	SCT	SCT	SCT	SCT	SCT	SCT
30	RAYALASEEMA	SCT	SCT	ISOL	ISOL	ISOL	ISOL	ISOL
31	TAMILNADU PUDUCHERRY & KARAIKAL	FWS	FWS	SCT	SCT	ISOL	ISOL	ISOL
32	COASTAL KARNATAKA	FWS	SCT	SCT	SCT	SCT	SCT	SCT
33	NORTH INTERIOR KARNATAKA	SCT	SCT	SCT	SCT	SCT	SCT	SCT
34	SOUTH INTERIOR KARNATAKA	FWS	WS	WS	FWS	SCT	SCT	SCT
35	KERALA & MAHE	WS	WS	WS	WS	FWS	FWS	FWS
36	LAKSHADWEEP	WS	WS	WS	WS	FWS	FWS	FWS

- As the lead period increases forecast accuracy decreases.

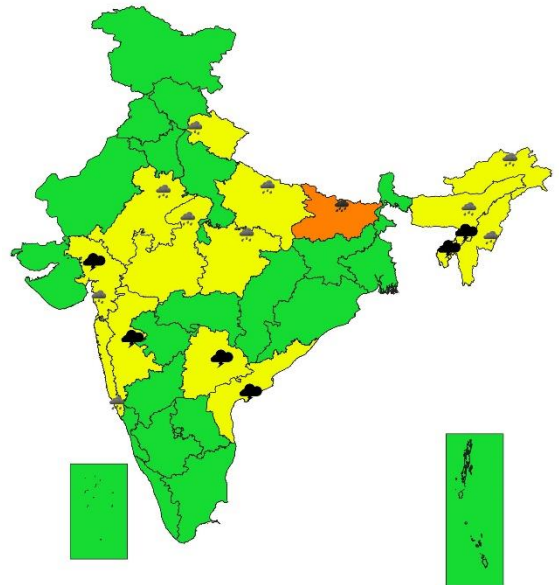




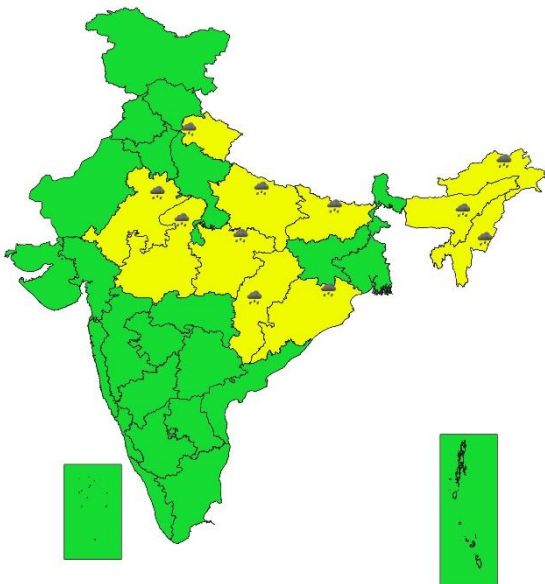
SUBDIVISIONWISE WEATHER WARNING FOR DAY 4
21-08-2024



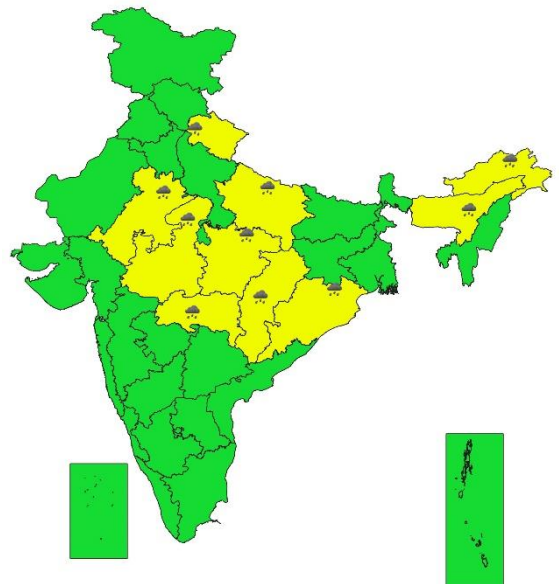
SUBDIVISIONWISE WEATHER WARNING FOR DAY 5
22-08-2024



SUBDIVISIONWISE WEATHER WARNING FOR DAY 6
23-08-2024



SUBDIVISIONWISE WEATHER WARNING FOR DAY 7
24-08-2024



- Action may be taken based on ORANGE AND RED COLOUR warnings.
- Vulnerable regions likely urban and hilly areas action may be initiated for heavy rainfall warning.
- As the lead period increases forecast accuracy decreases.

Impact due to

- **Very heavy rainfall** at isolated over East Uttar Pradesh during 18th -20th; Uttarakhand on 20th & 21st; Bihar during 21st -22nd; Gangetic West Bengal during 18th-20th; Nagaland, Manipur, Mizoram & Tripura on 18th & 19th; Jharkhand on 19th & 20th; Tamil Nadu, Puducherry & Karaikal on 19th; Kerala & Mahe and Lakshadweep on 19th & 20th August.
- **Low to Moderate flash flood risk** likely over few watersheds & neighbourhoods of south Gangetic West Bengal on 18th & 19th August. **(ANNEXURE IV)**
 - ✓ Localized Flooding of roads, water logging in low lying areas and closure of underpasses mainly in urban areas of the above region.
 - ✓ Occasional reduction in visibility due to heavy rainfall.
 - ✓ Disruption of traffic in major cities due to water logging in roads leading to increased travel time.
 - ✓ Minor damage to kutcha roads.
 - ✓ Possibilities of damage to vulnerable structure.
 - ✓ Localized Landslides/Mudslides/landslips/mud slips/land sinks/mud sinks.
 - ✓ Damage to horticulture and standing crops in some areas due to inundation.
 - ✓ It may lead to riverine flooding in some river catchments (for riverine flooding please visit Web page of CWC)

Action Suggested

- ✓ Check for traffic congestion on your route before leaving for your destination.
- ✓ Follow any traffic advisories that are issued in this regard.
- ✓ Avoid going to areas that face the water logging problems often.
- ✓ Avoid staying in vulnerable structure.

Agromet advisories for Heavy Rainfall likely over various parts of the country

- Drain out excess water from field crops and horticultural crops in Assam & Meghalaya, NMMT, Jammu & Kashmir, Himachal Pradesh, Uttarakhand, East Uttar Pradesh, West Rajasthan, Chhattisgarh, Odisha, Jharkhand, Tamil Nadu, Kerala, Lakshadweep, Karnataka, Andhra Pradesh and Telangana.
- Make provision for draining out excess water from standing crop fields and fruit orchards to avoid water stagnation in Gangetic West Bengal, Punjab, East Madhya Pradesh, Vidarbha, Konkan & Goa, Madhya Maharashtra.
- In **Himachal Pradesh** and **Uttarakhand**, harvest the matured apples and vegetable immediately during the clear weather and store them at safe places.
- Provide mechanical support to horticultural crops & staking to vegetables.

Flash Flood Guidance:

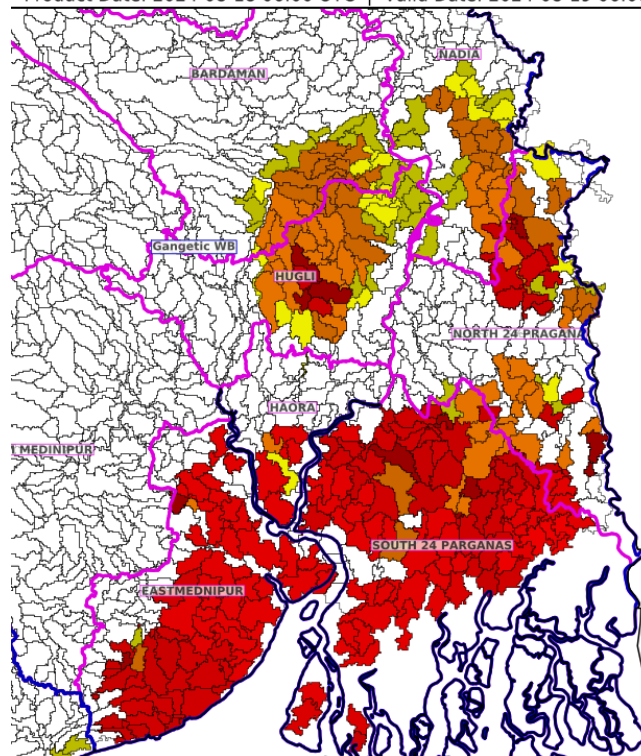
24 hours Outlook for the Flash Flood Risk (FFR) till 1130 IST of 19-08-2024 :

Low to Moderate flash flood risk likely over few watersheds & neighborhoods of following Met Sub-divisions during next 24 hours.

South Gangetic West Bengal – East Mednipur, Haora, Hugli, Bardaman, Nadia, North 24 Paraganas and South 24 Paraganas districts.

Surface runoff/ Inundation may occur at some fully saturated soils & low-lying areas over AoC as shown in map due to expected rainfall occurrence in next 24 hours.

Product: GFS FFR | Timescale: 24-hr | Region: "INDIA"
Product Date: 2024-08-18 06:00 UTC | Valid Date: 2024-08-19 06:00 UTC

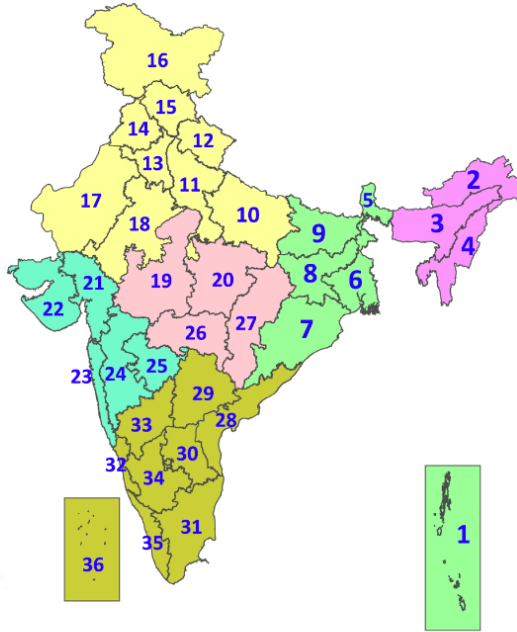


Legends & abbreviations:

- ❖ **Heavy Rain:**64.5-115.5mm; **Very Heavy Rain:**115.6-204.4mm; **Extremely Heavy Rain:** >204.4mm.
- ❖ **Obsy:** Observatory; **AWS:** Automatic Weather Station; **ARG:** Automatic Rain Gauge; **dist:** District; **NH:** National Highway; **KVK:** Krishi Vigyan Kendra; **DVC:** Damodar Valley Corporation; **PTO:** Part Time Office, **Aero:** Aerodrome, **IAF:** Indian Air Force.
- ❖ **Region wise classification of meteorological Sub-Divisions:**
 - **Northwest India:** Western Himalayan Region (Jammu-Kashmir-Ladakh-Gilgit-Baltistan-Muzaffarabad, Himachal Pradesh and Uttarakhand); Punjab, Haryana-Chandigarh-Delhi; West Uttar Pradesh, East Uttar Pradesh, West Rajasthan and East Rajasthan.
 - **Central India:** West Madhya Pradesh, East Madhya Pradesh, Vidarbha and Chhattisgarh.
 - **East India:** Bihar, Jharkhand, Sub-Himalayan West Bengal & Sikkim; Gangetic West Bengal, Odisha and Andaman & Nicobar Islands.
 - **Northeast India:** Arunachal Pradesh, Assam & Meghalaya and Nagaland, Manipur, Mizoram & Tripura.
 - **West India:** Gujarat Region, Saurashtra & Kutch, Konkan & Goa, Madhya Maharashtra and Marathawada.

LEGENDS

1. अंडमान और निकोबार द्वीपसमूह
2. अरुणाचल प्रदेश
3. असम और मेघालय
4. नागालैंड, मणिपुर, मिजोरम और त्रिपुरा
5. उप-हिमालयी पश्चिम बंगाल और सिक्किम
6. गंगीय पश्चिम बंगाल
7. ओडिशा
8. झारखंड
9. बिहार
10. पूर्वी उत्तर प्रदेश
11. पश्चिम उत्तर प्रदेश
12. उत्तराखंड
13. हरियाणा, चंडीगढ़ और दिल्ली
14. पंजाब
15. हिमाचल प्रदेश
16. जम्मू और कश्मीर और लद्दाख
17. पश्चिम राजस्थान
18. पूर्वी राजस्थान
19. पश्चिम मध्य प्रदेश
20. पूर्वी मध्य प्रदेश
21. गुजरात
22. सौराष्ट्र
23. कोंकण और गोवा
24. मध्य महाराष्ट्र
25. मराठवाड़ा
26. विदर्भ
27. छत्तीसगढ़
28. तटीय आंध्र प्रदेश और यनम
29. तेलंगाना
30. रायलसीमा
31. तमिलनाडु, पुडुचेरी और कराईकल
32. तटीय कर्नाटक
33. आंतरिक उत्तरी कर्नाटक
34. आंतरिक दक्षिणी कर्नाटक
35. केरल और माहे
36. लक्षद्वीप



1. Andaman & Nicobar Islands
2. Arunachal Pradesh
3. Assam & Meghalaya
4. Nagaland, Manipur, Mizoram & Tripura
5. Sub-Himalayan West Bengal & Sikkim
6. Gangetic West Bengal
7. Odisha
8. Jharkhand
9. Bihar
10. East Uttar Pradesh
11. West Uttar Pradesh
12. Uttarakhand
13. Haryana, Chandigarh & Delhi
14. Punjab
15. Himachal Pradesh
16. Jammu & Kashmir and Ladakh
17. West Rajasthan
18. East Rajasthan
19. West Madhya Pradesh
20. East Madhya Pradesh
21. Gujarat
22. Saurashtra
23. Konkan & Goa
24. Madhya Maharashtra
25. Marathwada
26. Vidarbha
27. Chhattisgarh
28. Coastal Andhra Pradesh & Yanam
29. Telangana
30. Rayalaseema
31. Tamilnadu, Puducherry & Karaikal
32. Coastal Karnataka
33. North Interior Karnataka
34. South Interior Karnataka
35. Kerala & Mahe
36. Lakshadweep

SPATIAL DISTRIBUTION (% of Stations reporting)

% Stations	Category	% Stations	Category
76-100	Widespread (WS/Most Places)	26-50	Scattered (SCT/A Few Places)
51-75	Fairly Widespread (FWS/Many Places)	1-25	Isolated (ISOL)

- | | | |
|----------------------|----------------------|--------------|
| Fog | Heavy Snow | Cold Wave |
| Heavy Rain | Dust Storm | Cold Day |
| Very Heavy Rain | Heat Wave | Ground Frost |
| Extremely Heavy Rain | Warm Night | |
| Thunder & Lightning | Hot Day | |
| Hailstorm | Hot & Humid | |
| Dust Raising Winds | Strong Surface Winds | |

COLOUR CODED WARNING

No Warning (No Action)
Watch (Be Aware)
Alert (Be Prepared To Take Action)
Warning (Take Action)

Probabilistic Forecast

Terms	Probability of Occurrence (%)
Unlikely	< 25
Likely	25 - 50
Very Likely	50 - 75
Most Likely	> 75

* Red colour warning does not mean "Red Alert", Red colour warning means "Take Action".

Forecast and Warning for any day is valid from 0830 hours IST of day till 0830 hours IST of next day.

For more details, kindly visit <https://mausam.imd.gov.in> or contact: 011-2434-4599

(Service to the Nation since 1875)

DEFINITION/CRITERIA

Rain/ Snow *	<p>Heavy: 64.5 to 115.5 mm/cm *</p> <p>Very Heavy: 115.6 to 204.4 mm/cm*</p> <p>Extremely Heavy: > 204.4 mm/cm *</p>
Heat Wave	<p>When maximum temperature of a station reaches $\geq 40^{\circ}\text{C}$ for plains and $\geq 30^{\circ}\text{C}$ for hilly regions</p> <p>(a) Based on Departure from normal</p> <p>Heat Wave: Maximum Temperature Departure from normal 4.5°C to 6.4°C.</p> <p>Severe Heat Wave: Maximum Temperature Departure from normal $\geq 6.5^{\circ}\text{C}$</p> <p>(b). Based on Actual maximum temperature</p> <p>Heat Wave: When actual maximum temperature $\geq 45^{\circ}\text{C}$.</p> <p>Severe Heat Wave: When actual maximum temperature $\geq 47^{\circ}\text{C}$</p> <p>(c). Criteria for heat wave for coastal stations</p> <p>When maximum temperature departure is $> 4.5^{\circ}\text{C}$ from normal. Heat Wave may be described provided maximum temperature $\geq 37^{\circ}\text{C}$</p>
Warm Night	<p>When maximum temperature remains 40°C</p> <p>Warm Night: When minimum temperature departure 4.5°C to 6.4°C.</p> <p>Severe Warm Night: When minimum temperature departure $> 6.4^{\circ}\text{C}$.</p>
Cold Wave	<p>When minimum temperature of a station $\leq 10^{\circ}\text{C}$ for plains and $\leq 0^{\circ}\text{C}$ for hilly regions.</p> <p>(a). Based on departure</p> <p>Cold Wave: Minimum Temperature Departure from normal -4.5°C to -6.4°C.</p> <p>Severe Cold Wave: Minimum Temperature Departure from normal $\leq -6.5^{\circ}\text{C}$</p> <p>(b) Based on actual Minimum Temperature (for Plains only)</p> <p>Cold Wave : When Minimum Temperature is $\leq 4.0^{\circ}\text{C}$</p> <p>Severe Cold Wave: When Minimum Temperature is $\leq 2.0^{\circ}\text{C}$</p> <p>(c) For Coastal Stations</p> <p>When Minimum Temperature departure is $\leq -4.5^{\circ}\text{C}$ & actual Minimum Temperature is $\leq 15^{\circ}\text{C}$</p>
Cold Day	<p>When minimum temperature of a station $\leq 10^{\circ}\text{C}$ for plains and $\leq 0^{\circ}\text{C}$ for hilly regions</p> <p>Based on departure</p> <p>Cold Day: Maximum Temperature Departure from normal -4.5°C to -6.4°C.</p> <p>Severe Cold Day: Maximum Temperature Departure from normal $\leq -6.5^{\circ}\text{C}$</p>
Fog	<p>Phenomenon of small droplets suspended in air and the horizontal visibility $< 1\text{km}$</p> <p>Moderate Fog: When the visibility between 500-200 metres</p> <p>Dense Fog: when the visibility between 50- 200 metres</p> <p>Very Dense Fog: when the visibility < 50 metres</p>
Thunderstorm	<p>Sudden electrical discharges manifested by a flash of light (Lightning) and a sharp rumbling sound (thunder)</p>
Dust/Sand Storm	<p>An ensemble of particles of dust or sand energetically lifted to great heights by a strong and turbulent wind.</p>
Frost	<p>Ice deposits on ground</p> <p>Air temperature $\leq 4^{\circ}\text{C}$ (over Plains)</p>
Squall	<p>A strong wind that rises suddenly, lasts for atleast 1 minute.</p> <p>Moderate: Wind speed 52-61 kmph</p> <p>Severe: Wind speed 62-87 kmph</p> <p>Very Severe: Wind speed > 87 kmph</p>
Sea State	<p>Effect of various waves in the sea over specific area</p> <p>Rough to very rough: Wind speed 41-62 kmph (22-33 knots) & Wave height 2.5-6 metre</p> <p>High to very high: Wind speed 63-117 kmph (34-63 knots) & Wave height 6-14 metre</p> <p>Phenomenal: Wind speed > 117 kmph (> 63 knots) & Wave height > 14 metre</p>
Cyclone	<p>Cyclonic Storm: Wind speed 62-87 kmph (34-47 knots)</p> <p>Severe Cyclonic Storm: Wind speed 88-117 kmph (48-63 knots)</p> <p>Very Severe Cyclonic Storm: Wind speed 118-165 kmph (64 - 89 knots)</p> <p>Extremely Severe Cyclonic Storm: Wind speed 166-220 kmph (90 -119 knots)</p> <p>Super Cyclone Strom: Wind speed > 220 kmph (> 119 knots)</p>

* Red colour warning does not mean "Red Alert", Red colour warning means "Take Action".
Forecast and Warning for any day is valid from 0830 hours IST of day till 0830 hours IST of next day.
For more details, kindly visit <https://mausam.imd.gov.in> or contact: 011-2434-4599
(Service to the Nation since 1875)