



Government of India
Ministry of Earth Sciences
India Meteorological Department



Press Release

Date: 24th August, 2024

Time of Issue: 1430 hours IST

Subject: (i) Well-marked low-pressure area over southeast Uttar Pradesh and northeast Madhya Pradesh is expected to move westward, intensify into a depression over west Madhya Pradesh by 26th, and reach south Rajasthan and north Gujarat by 27 August.
(ii) Formation of fresh Low-Pressure area likely over north Bay of Bengal during next 48 hours
(ii) Very heavy to extremely heavy rainfall likely over Marathwada, Vidarbha, interior Karnataka on 24th, West Rajasthan, East Madhya Pradesh, Chhattisgarh on 25th, Gangetic West Bengal and Odisha during 24th-25th, Coastal Karnataka, West Madhya Pradesh, East Rajasthan, Mizoram and Tripura during 24th-26th, Gujarat state during 24th-28th August and Konkan & Goa, Madhya Maharashtra during 24th-27th August.

Realised weather during past 24 hours till 0830 hours IST of today (Annexure I)

Heavy to very heavy rainfall with extremely heavy falls at isolated places over Konkan & Goa; **Heavy to very heavy rainfall** at isolated places over East Rajasthan, Gujarat Region, Chhattisgarh, Madhya Pradesh, Coastal Karnataka, Madhya Maharashtra, Jharkhand, Odisha; **Heavy rainfall** at isolated places over Haryana-Delhi, West Rajasthan, Saurashtra & Kutch, North Interior Karnataka, Telangana, Marathwada, Arunachal Pradesh.

Weather Systems:

- ✓ The low pressure area over northwest Jharkhand & neighbourhood moved nearly westwards, intensified and lay as well marked low pressure area over southeast Uttar Pradesh & adjoining northeast Madhya Pradesh at 0830 hrs IST of today, 24th August 2024. It is likely to continue to move nearly westwards, intensify into a depression over west Madhya Pradesh by 26th and reach south Rajasthan and adjoining north Gujarat by 27th August.
- ✓ The cyclonic circulation over north Bay of Bengal now lies in middle tropospheric level. Under its influence a low pressure area is likely to form over the same region during next 48 hours.
- ✓ The western end of the Monsoon trough lies south of its normal position while the eastern end is at the normal position. It is likely to continue to be so during next 2-3 days .
- ✓ The offshore trough has strengthened and now runs from south Gujarat to south Kerala coast.
- ✓ The low level westerly flow from the Arabian Sea along the northern parts of the west peninsular coast has strengthened since yesterday. It is likely to continue to be so during next 2-3 days.

Forecast & Warnings (upto 7 days):

❖ Northwest India

- ✓ Fairly widespread to widespread light/moderate rainfall very likely over Himachal Pradesh, Uttarakhand, East Rajasthan; isolated to scattered rainfall over Jammu-Kashmir-Ladakh-Gilgit-Baltistan-Muzaffarabad, Punjab, Uttar Pradesh Haryana-Chandigarh-Delhi, West Rajasthan during the week.
- ✓ Isolated **heavy rainfall** very likely over Himachal Pradesh on 24th; Uttarakhand on 24th & 28th; Punjab & Haryana-Chandigarh-Delhi on 27th & 28th; Uttar Pradesh on 24th & 25th; Rajasthan during 24th -26th August.
- ✓ Isolated **very heavy rainfall** also very likely over West Rajasthan on 25th; East Rajasthan on 24th & 26th August.
- ✓ Isolated **extremely heavy rainfall also very likely** over East Rajasthan on 25th August.

❖ West & Central India

- ✓ Fairly widespread to widespread light/moderate rainfall very likely over West & Central India during the week.
- ✓ Isolated **Heavy rainfall** very likely over Konkan & Goa, Madhya Maharashtra, Saurashtra & Kutch during 24th -29th; Marathwada on 24th & 25th; Vidarbha on 24th & 25th; Chhattisgarh on 24th; Gujarat Region during 24th -28th; Madhya Pradesh during 24th – 26th August.
- ✓ Isolated **very heavy rainfall** also very likely over East Madhya Pradesh, Chhattisgarh, Marathwada & Vidarbha on 24th August.
- ✓ Isolated **extremely heavy rainfall also very likely** over West Madhya Pradesh on 24th & 25th; Madhya Maharashtra & Gujarat Region during 24th -26th; Saurashtra & Kutch during 24th -27th; West Madhya Pradesh on 25th August.

❖ East & Northeast India

- ✓ Fairly widespread to widespread light/moderate rainfall very likely over East & Northeast India, during the week.
- ✓ Isolated **heavy rainfall** very likely over Andaman & Nicobar Islands on 27th; West Bengal & Sikkim on 26th; Bihar on 26th & 27th; Jharkhand during 24th -27th; Odisha on 26th Arunachal Pradesh on 24th, 28th, 29th & 30th August; Assam & Meghalaya, Mizoram & Tripura during all the 7 days of the week.
- ✓ Isolated **very heavy rainfall** also very likely over Gangetic West Bengal on 24th & 26th; Odisha on 24th; Assam & Meghalaya on 25th; Mizoram & Tripura on 24th, 26th & 27th August.
- ✓ Isolated **extremely heavy rainfall also very likely** over Tripura, Mizoram on 26th August.

❖ South Peninsular India:

- ✓ Scattered to Fairly widespread light/moderate rainfall very likely over Kerala & Mahe, Lakshadweep, Coastal Andhra Pradesh & Yanam, Coastal Karnataka, Interior Karnataka; isolated to scattered rainfall over Tamil Nadu, Puducherry & Karaikal, Rayalaseema & Telangana during the week.
- ✓ Isolated **heavy rainfall** very likely over Kerala & Mahe during 24th – 30th; Coastal Andhra Pradesh & Yanam on 24th; Telangana on 24th & 25th; Coastal Karnataka during 27th -30th; North Interior Karnataka during 25th -30th; South Interior Karnataka on 25th, 29th & 30th August.
- ✓ Isolated **very heavy rainfall** also very likely over Coastal Karnataka during 24th -26th; North Interior Karnataka on 24th; South Interior Karnataka on 24th August.

For more details, kindly refer: https://mausam.imd.gov.in/responsive/all_india_forecast_bulletin.php

Significant Rainfall recorded during past 24 hours till 0830 hours IST of today 24.08.2024 (in cm):

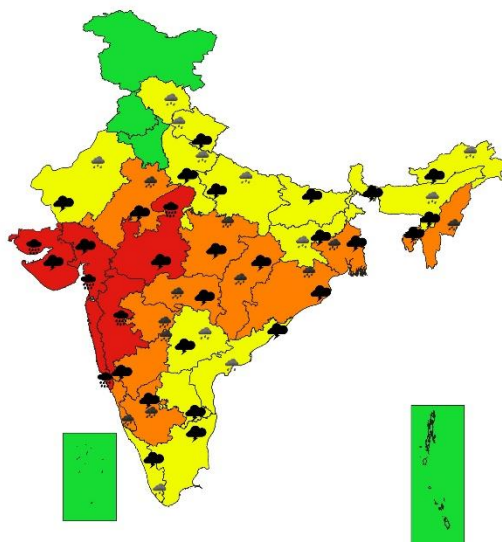
- ❖ **East Madhya Pradesh:** Nowrozabad (dist Umaria) 16, Anuppur-aws (dist Anuppur) 16, Shahdole(sohagpur) (dist Shahdol) 15, Jaithari (dist Anuppur) 14, Chandia (dist Umaria) 14, Kotma (dist Anuppur) 14, Pali (dist Umaria) 13, Karkeli (dist Umaria) 11, Patan (dist Jabalpur) 9, Badwara (dist Katni) 9, Pawai (dist Panna) 8, Mada (dist Singrauli) 8, Sidhi (gopadbanas) (dist Sidhi) 8, Bilaspur (dist Umaria) 7, Umaria-aws (dist Umaria) 7, Deori (dist Sagar) 7, Budhar (dist Shahdol) 7, Bahri (dist Sidhi) 7, Harrai (dist Chindwara) 7, Devser (dist Singrauli) 7,
- ❖ **West Madhya Pradesh:** Indore (dist Indore) 15, Susner (dist Agar-malwa) 13, Meghnagar (dist Jhabua) 12, Barod (dist Agar-malwa) 10, Navibagh Aet (dist Bhopal) 9, Hatpiplaya (dist Dewas) 9, Tal (dist Ratlam) 8, New Harsud (dist Khandwa) 8, Satwas (dist Dewas) 8, Bairagarh Airport (dist Bhopal) 8, Bhimpur (dist Betul) 7, Khilchipur (dist Rajgarh) 7, Bhopal Arera Hills (dist Bhopal) 7, Burhanpur (dist Burhanpur) 7, Khandwa (dist Khandwa) 7, Udainagar (dist Dewas) 7, Vidisha (dist Vidisha) 7, Ichhawar (dist Sehore) 7,
- ❖ **Jharkhand:** Dhurki (dist Garhwa) 15, Baharagora (dist East Singhbhum) 8, Sikatia (dist Deoghar) 8, Chakradharpur (dist West Singhbhum) 7,
- ❖ **West Rajasthan:** Marwar Junction (dist Pali) 7, Desuri (dist Pali) 7,
- ❖ **Haryana-Chandigarh-Delhi:** Samalkha (dist Panipat) 11, Pitampura Aws (dist North West Delhi) 7,
- ❖ **Chhattisgarh:** Adbhar (dist Sakti) 19, Ramchandrapur (dist Balrampur) 11, Bamhnidih (dist Janjgir) 10, Sakti (dist Sakti) 10, Marwahi (dist Gaurela Pendra Marwahi) 10, Pasaan (dist Korba) 10, Pamgarh (dist Janjgir) 9, Malkharoda (dist Sakti) 9, Pratappur (dist Surajpur) 9, Odagi (dist Surajpur) 9, Raigarh (dist Raigarh) 8, Pali (dist Korba) 8, Bhaisma (dist Korba) 8, Poudi Uparora (dist Korba) 8, Baikunthpur (dist Koriya) 8, Champa (dist Janjgir) 8, Khadgava (dist Manendragarh Bharatpur) 7, Ambikapur (dist Surguja) 7, Chirmiri (dist Manendragarh Bharatpur) 7, Kotadol (dist Manendragarh Bharatpur) 7, Pondi Bachra (dist Koriya) 7, Saragaon (dist Janjgir) 7, Naya Baradwar (dist Sakti) 7, Bijapur (dist Bijapur) 7, Gangalur (dist Bijapur) 7, Pendra (dist Gaurela Pendra Marwahi) 7, Patna (dist Koriya) 7, Kapu (dist Raigarh) 7, Bhothiya (dist Sakti) 7, Usoor (dist Bijapur) 7, Lailunga (dist Raigarh) 7, Navagarh (dist Janjgir) 7, Rajpur (dist Balrampur) 7,
- ❖ **Odisha:** Bamra (dist Sambalpur) 17, Sundargarh (dist Sundargarh) 14, Tangarpali (dist Sundargarh) 13, Kutra (dist Sundargarh) 13, Lathikata (dist Sundargarh) 13, Rajgangpur (dist Sundargarh) 12, Bargaon (dist Sundargarh) 11, Panposh (dist Sundargarh) 8, Jamda (dist Mayurbhanj) 7, Sarasakana (dist Mayurbhanj) 7, Berhampur (dist Ganjam) 7,
- ❖ **Marathwada:** Sonpeth (dist Parbhani) 11, Jalkot (dist Latur) 8, Ambejogai / Mominabad (dist Beed) 8, Mukhed (dist Nanded) 7, Patoda (dist Beed) 7, Ashti (dist Beed) 7, Parli Vajinath (dist Beed) 7,
- ❖ **East Rajasthan:** Bhungra Sr (dist Banswara) 13, Mounntabu Tehsil Sr (dist Sirohi) 12, Khushalgarh (dist Banswara) 11, Pratapgarh (dist Pratapgarh) 10, Kapasan Sr (dist Chittorgarh) 9, Dholpur Tehsil Sr (dist Dholpur) 9, Ramganjmandi Sr (dist Kota) 8, Mounnt Abu (dist Sirohi) 7, Jhadol Sr (dist Udaipur) 7, Dug (dist Jhalawar) 7, Pipalkhunt Sr (dist Pratapgarh) 7, Jaipur Aero (dist Jaipur) 7, Loharia (dist Banswara) 7, Manohar Thana (dist Jhalawar) 7,
- ❖ **Madhya Maharashtra:** Rahuri (dist Ahmednagar) 13, Igatpuri (dist Nashik) 11, Trimbakshwar (dist Nashik) 11, Gaganbawada (dist Kolhapur) 9, Bhadgaon (dist Jalgaon) 8, Mahabaleshwar- Imd Obsy (dist Satara) 8, Bhore (dist Pune) 8, Jamkhed (dist Ahmednagar) 8, Ahmednagar - Imd Pt (dist Ahmednagar) 7, Chandgad (dist Kolhapur) 7, Ambegaon Ghodegaon (dist Pune) 7, Sangamner (dist Ahmednagar) 7, Pathardi (dist Ahmednagar) 7, Shahuwadi (dist Kolhapur) 7,
- ❖ **Konkan & Goa:** Mulde_Agri (dist Sindhudurg) 21, Awalegaon - Arg (dist Sindhudurg) 20, Rameshwar_agri (dist Sindhudurg) 18, Kudal (dist Sindhudurg) 16, Devgad (dist Sindhudurg) 16, Ratnagiri - Imd Obsy (dist Ratnagiri) 14, Canacona (dist South Goa) 12, Sawantwadi (dist Sindhudurg) 12, Harnai Imd Obsy (dist Ratnagiri) 12, Lanja (dist Ratnagiri) 11, Malvan (dist Sindhudurg) 11, Rajapur (dist Ratnagiri) 11, Shriwardhan (dist Raigad) 10, Dapoli_agri (dist Ratnagiri) 10, Kankavli (dist Sindhudurg) 10, Vengurla Arg (dist Sindhudurg) 9, Sangameshwar Devrukh (dist Ratnagiri) 9, Pawarwadi - Arg (dist Ratnagiri) 9, Sanguem (dist South Goa) 8, Dabolim N.a.s.- Navy (dist South Goa) 8, Murud (dist Raigad) 8, Mapusa (dist North Goa) 7, Wakwali_agri (dist Ratnagiri) 7, Ponda (dist North Goa) 7, Mormugao - Pmo Imd (dist South Goa) 7, Panjim - Imd Obsy (dist North Goa) 7,
- ❖ **Gujarat Region:** Kapadvanj (dist Kheda) 16, Vijapur (dist Mehsana) 15, Vadgam (dist Banaskantha) 14, Dahegam (dist Gandhinagar) 13, Nadiad (dist Kheda) 10, Meghraj (dist Aravalli) 10, Mahudha (dist Kheda) 10, Talod (dist Sabarkantha) 10, Prantij (dist Sabarkantha) 9, Godhra (dist Panchmahal) 9, Amirgadh (dist Banaskantha) 9, Wanakbori (dist Mahisagar) 9, Bilodara_aws (dist Kheda) 8, Mansa (dist Gandhinagar) 8, Chhota Udepur (dist Chhota Udepur) 8, Bayad (dist Aravalli) 8, Kadana (dist Mahisagar) 8, Sagbara (dist Narmada) 8, Bayad_arg (dist Aravalli) 8, Nanipalson (dist Valsad) 8, Hansot (dist Bharuch) 8, Poshina (dist Sabarkantha) 7, Modasa (dist Aravalli) 7, Santrampur (dist Mahisagar) 7, Malpur (dist Aravalli) 7, Abad City (dist Ahmedabad) 7,
- ❖ **Saurashtra & Kutch:** Bagasra (dist Amreli) 10,
- ❖ **Coastal Karnataka:** Castle Rock (dist Uttara Kannada) 13, Manki (dist Uttara Kannada) 11,
- ❖ **North Interior Karnataka:** Londa (dist Belagavi) 7,
- ❖ **Telangana:** Mudhole (dist Nirmal) 9, Bejjur (dist Kumaram Bheem) 8, Bheemgal (dist Nizamabad) 7, Navipet (dist Nizamabad) 7, Mallapur (dist Jagtial) 7, Nirmal (dist Nirmal) 7,
- ❖ **Arunachal Pradesh:** Pasighat (dist East siang) 11, Roing 8, Kamba 8,

7 Days Rainfall Forecast								
S. No.	Subdivision	24-Aug	25-Aug	26-Aug	27-Aug	28-Aug	29-Aug	30-Aug
		Day 1	Day 2	Day 3	Day 4	Day 5	Day 6	Day 7
1	ANDAMAN & NICOBAR ISLANDS	SCT	FWS	FWS	WS	WS	WS	WS
2	ARUNACHAL PRADESH	FWS	FWS	SCT	SCT	FWS	FWS	FWS
3	ASSAM & MEGHALAYA	FWS	FWS	WS	FWS	FWS	FWS	FWS
4	NAGALAND, MANIPUR, MIZORAM & TRIPURA	WS	WS	FWS	FWS	FWS	FWS	FWS
5	SUB-HIMALAYAN WEST BENGAL & SIKKIM	SCT	FWS	FWS	FWS	FWS	FWS	SCT
6	GANGETIC WEST BENGAL	WS	WS	WS	FWS	FWS	SCT	SCT
7	ODISHA	WS	FWS	FWS	SCT	SCT	FWS	FWS
8	JHARKHAND	WS	WS	WS	FWS	FWS	FWS	SCT
9	BIHAR	SCT	SCT	FWS	FWS	FWS	SCT	SCT
10	EAST UTTAR PRADESH	FWS	FWS	SCT	SCT	SCT	SCT	SCT
11	WEST UTTAR PRADESH	SCT	FWS	FWS	SCT	SCT	SCT	SCT
12	UTTARAKHAND	FWS	FWS	FWS	FWS	FWS	FWS	FWS
13	HARYANA CHANDIGARH & DELHI	ISOL	ISOL	SCT	FWS	FWS	SCT	SCT
14	PUNJAB	SCT	SCT	SCT	SCT	SCT	SCT	SCT
15	HIMACHAL PRADESH	SCT	SCT	FWS	WS	FWS	FWS	SCT
16	JAMMU & KASHMIR AND LADAKH	ISOL	ISOL	SCT	FWS	SCT	SCT	SCT
17	WEST RAJASTHAN	SCT	FWS	SCT	SCT	ISOL	ISOL	ISOL
18	EAST RAJASTHAN	FWS	WS	WS	SCT	ISOL	ISOL	SCT
19	WEST MADHYA PRADESH	WS	WS	FWS	FWS	FWS	FWS	FWS
20	EAST MADHYA PRADESH	WS	WS	FWS	FWS	FWS	FWS	FWS
21	GUJARAT REGION	WS	WS	WS	WS	WS	WS	WS
22	SAURASHTRA & KUTCH	WS	WS	WS	WS	WS	WS	WS
23	KONKAN & GOA	WS	WS	WS	WS	WS	WS	WS
24	MADHYA MAHARASHTRA	WS	WS	WS	FWS	FWS	SCT	SCT
25	MARATHAWADA	WS	FWS	SCT	SCT	SCT	SCT	SCT
26	VIDARBHA	WS	WS	FWS	FWS	FWS	FWS	FWS
27	CHHATTISGARH	WS	FWS	SCT	FWS	FWS	FWS	FWS
28	COASTAL ANDHRA PRADESH & YANAM	FWS	SCT	SCT	SCT	SCT	FWS	FWS
29	TELANGANA	FWS	SCT	ISOL	ISOL	ISOL	SCT	SCT
30	RAYALASEEMA	SCT	ISOL	ISOL	ISOL	ISOL	SCT	SCT
31	TAMILNADU PUDUCHERRY & KARAIKAL	ISOL	ISOL	ISOL	ISOL	ISOL	ISOL	SCT
32	COASTAL KARNATAKA	WS	WS	WS	WS	WS	WS	WS
33	NORTH INTERIOR KARNATAKA	WS	FWS	FWS	SCT	SCT	FWS	FWS
34	SOUTH INTERIOR KARNATAKA	SCT	SCT	SCT	ISOL	SCT	SCT	FWS
35	KERALA & MAHE	FWS	FWS	FWS	FWS	ISOL	ISOL	ISOL
36	LAKSHADWEEP	FWS	SCT	SCT	SCT	FWS	FWS	FWS

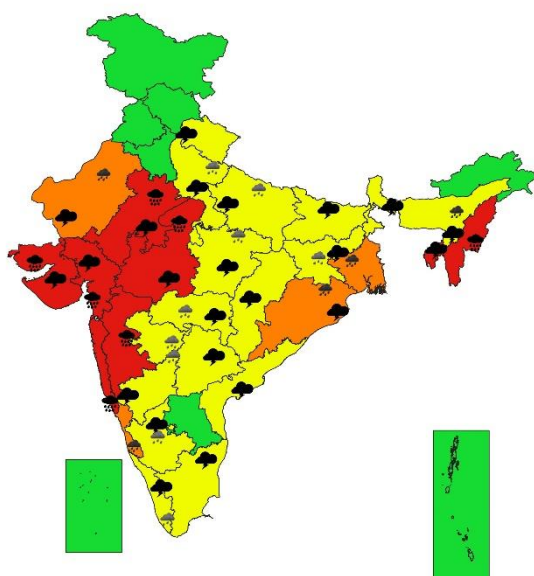
- As the lead period increases forecast accuracy decreases.



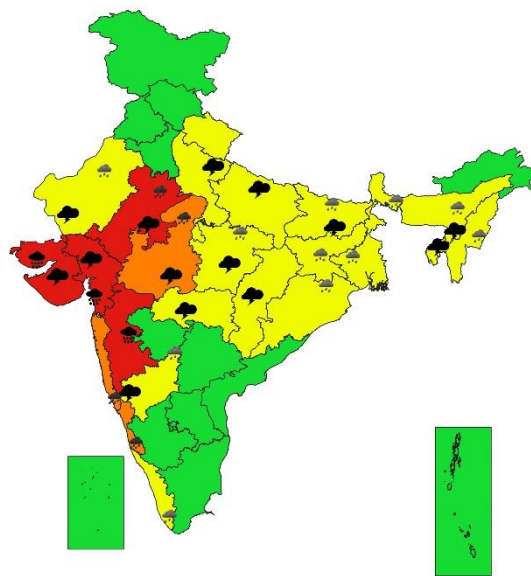
SUBDIVISIONWISE WEATHER WARNING FOR DAY 1
24-08-2024



SUBDIVISIONWISE WEATHER WARNING FOR DAY 2
25-08-2024

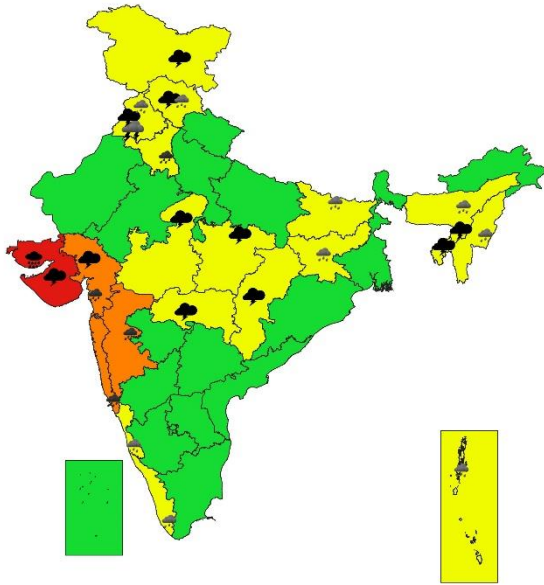


SUBDIVISIONWISE WEATHER WARNING FOR DAY 3
26-08-2024

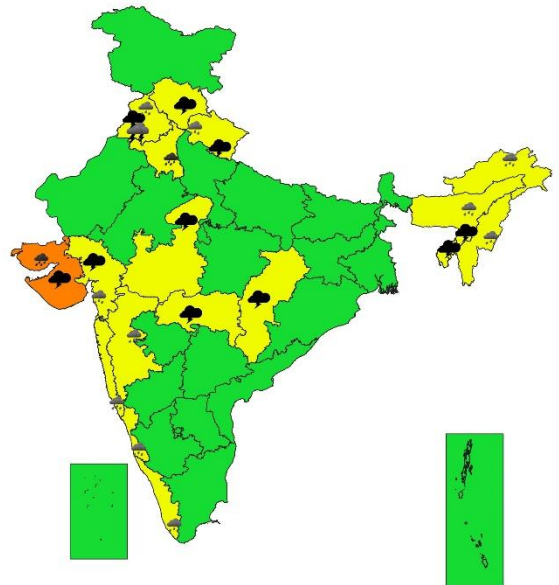




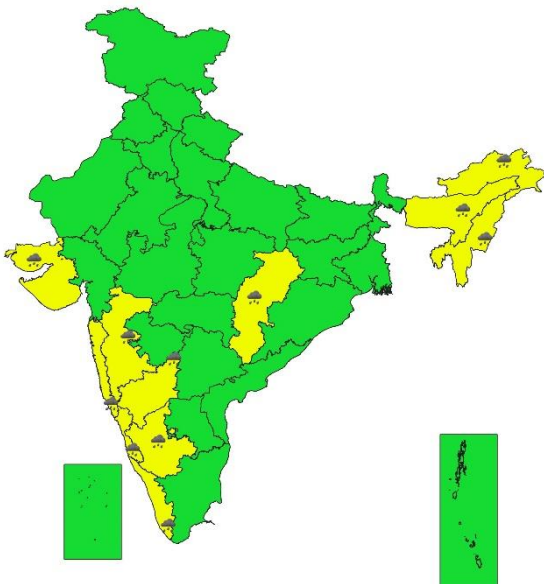
SUBDIVISIONWISE WEATHER WARNING FOR DAY 4
27-08-2024



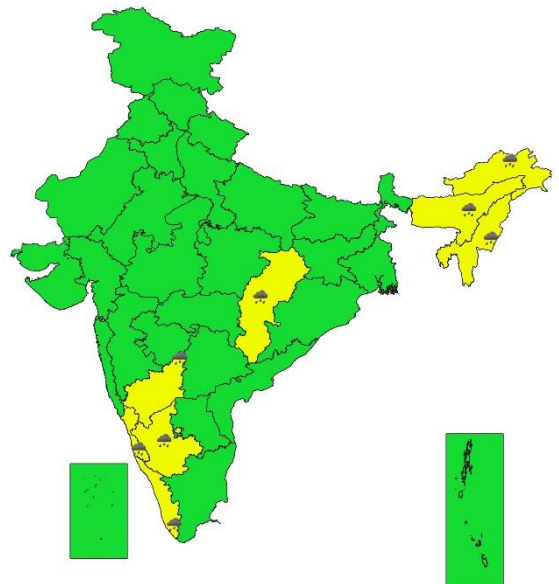
SUBDIVISIONWISE WEATHER WARNING FOR DAY 5
28-08-2024



SUBDIVISIONWISE WEATHER WARNING FOR DAY 6
29-08-2024



SUBDIVISIONWISE WEATHER WARNING FOR DAY 7
30-08-2024



- Action may be taken based on ORANGE AND RED COLOUR warnings.
- Vulnerable regions likely urban and hilly areas action may be initiated for heavy rainfall warning.
- As the lead period increases forecast accuracy decreases.

Impact due to

- ✓ **Isolated extremely heavy rainfall very likely over** East Rajasthan on 25th; Madhya Pradesh on 24th & 25th; Konkan & Goa on 14th & 25th; Madhya Maharashtra during 24th-26th; Saurashtra & Kutch during 24th-27th; Gujarat Region during 24th-26th; Mizoram & Tripura on 26th August.
 - ✓ **Very heavy rainfall** at isolated over East Madhya Pradesh, Chhattisgarh, Marathwada, Vidarbha, Interior Karnataka on 24th; West Rajasthan on 25th; Gangetic West Bengal during 24th & 25th; Odisha on 24th & 25th; Coastal Karnataka on 24th & 26th August.
 - ✓ **Low to Moderate flash flood risk** likely over Chhattisgarh, East Madhya Pradesh, Odisha, Gangetic West Bengal, Jharkhand, East Rajasthan, West Madhya Pradesh, Gujarat Region, Saurashtra & Kutch, Coastal Karnataka & Konkan & Goa 24th & 25th August. **(ANNEXURE IV)**
-
- ✓ Localized Flooding of roads, water logging in low lying areas and closure of underpasses mainly in urban areas of the above region.
 - ✓ Occasional reduction in visibility due to heavy rainfall.
 - ✓ Disruption of traffic in major cities due to water logging in roads leading to increased travel time.
 - ✓ Minor damage to kutch roads.
 - ✓ Possibilities of damage to vulnerable structure.
 - ✓ Localized Landslides/Mudslides/landslips/mud slips/land sinks/mud sinks.
 - ✓ Damage to horticulture and standing crops in some areas due to inundation.
 - ✓ It may lead to riverine flooding in some river catchments (for riverine flooding please visit Web page of CWC)

Action Suggested

- ✓ Check for traffic congestion on your route before leaving for your destination.
- ✓ Follow any traffic advisories that are issued in this regard.
- ✓ Avoid going to areas that face the water logging problems often.
- ✓ Avoid staying in vulnerable structure.

Agromet advisories for Heavy Rainfall likely over various parts of the country

- ✓ Drain out excess water from field crops and horticultural crops in Arunachl Pradesh, Assam & Meghalaya, Rajasthan, Madhya Pradesh, Chhattisgarh, Gujrat, Konkan & Goa, Madhya Maharashtra, Odisha, Jharkhand and Gangetic Wet Bengal.
- ✓ Make provision for draining out excess water from standing crop fields and fruit orchards to avoid water stagnation in Uttar Pradesh, Marathwada, Vidarbha, North Kerala, Karnataka, Coastal Andhra Pradesh and Telangana.
- ✓ Due to continuous heavy rain transplanted rice and vegetables are submerged in low lying areas, recovery of young rice seedlings is unlikely, farmers are advised to collect short duration rice varieties after cessation of rain otherwise can wait a bit and prepare in advance for winter vegetables in Tripura.
- ✓ Drain out excess water from kharif rice, groundnut, sesame, soyabean, ginger, turmeric and vegetables to prevent the water logging in Mizoram.
- ✓ Drain out excess water from pigeon pea, soybean, cotton and sesame crop fields in Saurashtra & Kutch; from transplanted rice, castor, cotton, pearl millet, groundnut, sesame and maize fields in Gujrat.
- ✓ Provide mechanical support to horticultural crops & staking to vegetables.

Flash Flood Guidance:**24 hours Outlook for the Flash Flood Risk (FFR) till 1130 IST of 25-08-2024:**

Low to Moderate flash flood risk likely over few watersheds & neighbourhoods of following Met Sub-divisions during next 24 hours.

Chhattisgarh - Bilaspur, Jashpur, Korea, Mungeli, Raigarh and Surguja districts.

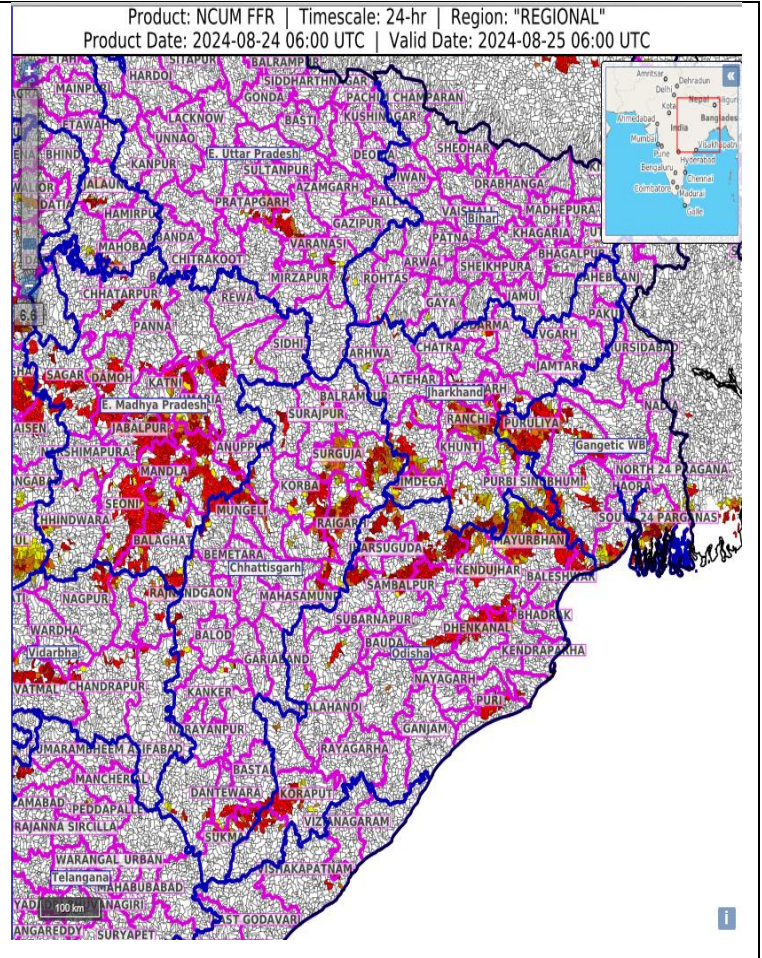
East Madhya Pradesh - Anuppur, Balaghat, Damoh, Dindori, Jabalpur, Katni, Mandla, Sagar, Seoni and Umaria districts.

Odisha - Baragarh, Deogarh, Dhenkanal, Jharsuguda, Kendujhar, Mayurbhanj, Puri, Sambalpur and Sundargarh districts.

Gangetic West Bengal - Bankura, Eastmednipur, Pashchim Medinipur and South 24 Parganas districts.

Jharkhand - Bokaro, Gumla, Ranchi, Simdega and West Singhbhum districts.

Surface runoff/ Inundation may occur at some fully saturated soils & low-lying areas over AoC as shown in map due to expected rainfall occurrence in next 24 hours.



24 hours Outlook for the Flash Flood Risk (FFR) till 1130 IST of 25-08-2024:

Low to Moderate flash flood risk likely over few watersheds & neighbourhoods of following Met Sub-divisions during next 24 hours.

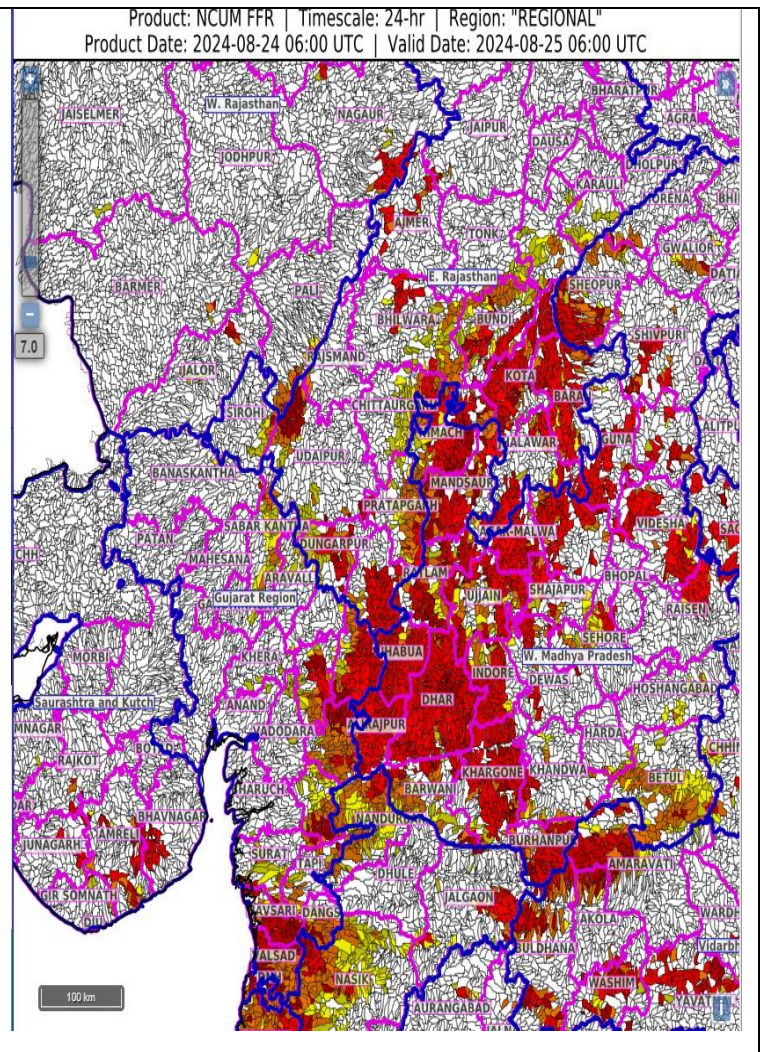
East Rajasthan - Banswara, Baran, Bundi, Dungarpur, Jhalawar, Kota, Pratapgarh and Udaipur districts.

West Madhya Pradesh - Agar-Malwa, Barwani, Burhanpur, Guna, Indore, Khargone, Mandsaur, Nimach, Ujjain and Videsha districts.

Gujarat Region - Daman, Chhota Udepur, Dangs, Narmada, Navsari, Panchmahal, Surat and Valsad districts.

Saurashtra & Kutch - Amreli, Bhavnagar, Gir Somnath and Junagarh districts.

Surface runoff/ Inundation may occur at some fully saturated soils & low-lying areas over AoC as shown in map due to expected rainfall occurrence in next 24 hours.

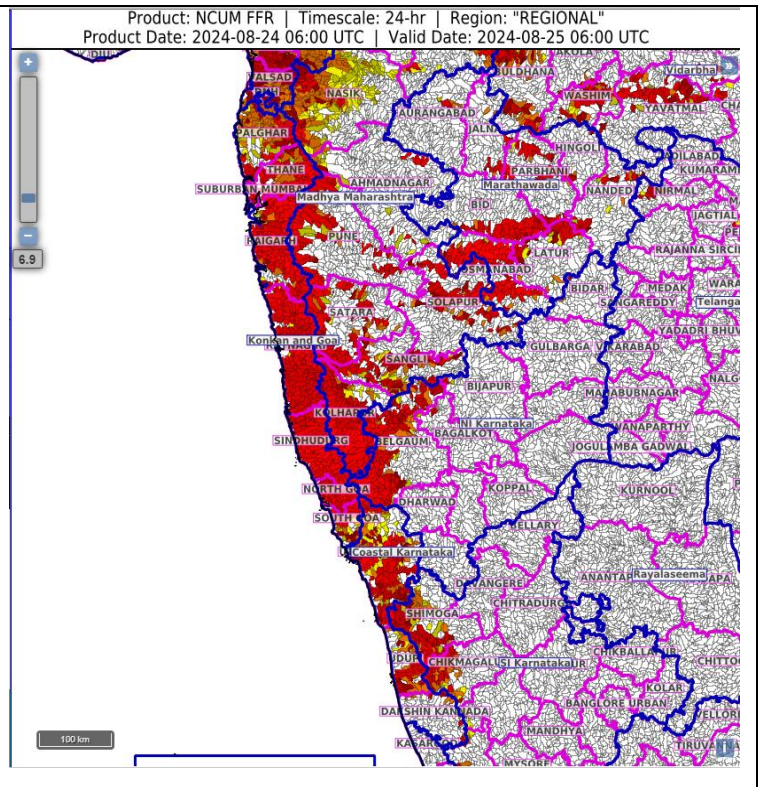


**24 hours Outlook for the Flash Flood Risk (FFR)
till 1130 IST of 25-08-2024 :**

Low to Moderate flash flood risk likely over few watersheds & neighbourhoods of following Met Sub-divisions during next 24 hours.

Coastal Karnataka - Dakshin Kannada, Udupi and Uttara Kannada districts.
Konkan & Goa - North Goa, South Goa, Mumbai City, Palghar, Raigarh, Ratnagiri, Sindhudurg, Suburban Mumbai and Thane districts.

Surface runoff/ Inundation may occur at some fully saturated soils & low-lying areas over AoC as shown in map due to expected rainfall occurrence in next 24 hours.

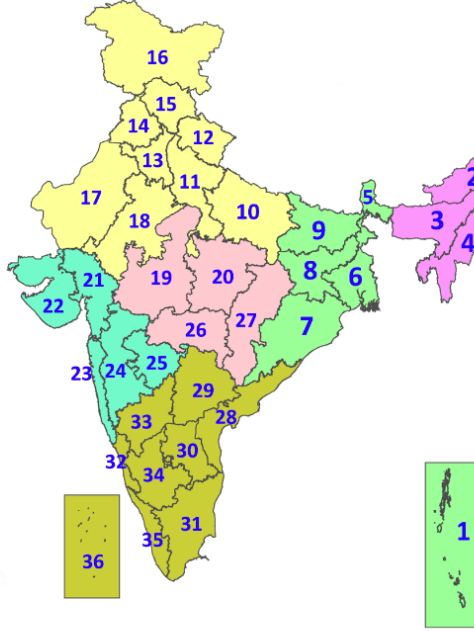


Legends & abbreviations:

- ❖ **Heavy Rain:** 64.5-115.5mm; **Very Heavy Rain:** 115.6-204.4mm; **Extremely Heavy Rain:** >204.4mm.
- ❖ **Obsy:** Observatory; **AWS:** Automatic Weather Station; **ARG:** Automatic Rain Gauge; **dist:** District; **NH:** National Highway; **KVK:** Krishi Vigyan Kendra; **DVC:** Damodar Valley Corporation; **PTO:** Part Time Office, **Aero:** Aerodrome, **IAF:** Indian Air Force.
- ❖ **Region wise classification of meteorological Sub-Divisions:**
 - **Northwest India:** Western Himalayan Region (Jammu-Kashmir-Ladakh-Gilgit-Baltistan-Muzaffarabad, Himachal Pradesh and Uttarakhand); Punjab, Haryana-Chandigarh-Delhi; West Uttar Pradesh, East Uttar Pradesh, West Rajasthan and East Rajasthan.
 - **Central India:** West Madhya Pradesh, East Madhya Pradesh, Vidarbha and Chhattisgarh.
 - **East India:** Bihar, Jharkhand, Sub-Himalayan West Bengal & Sikkim; Gangetic West Bengal, Odisha and Andaman & Nicobar Islands.
 - **Northeast India:** Arunachal Pradesh, Assam & Meghalaya and Nagaland, Manipur, Mizoram & Tripura.
 - **West India:** Gujarat Region, Saurashtra & Kutch, Konkan & Goa, Madhya Maharashtra and Marathwada.

LEGENDS

1. अंडमान और निकोबार द्वीपसमूह
2. अरुणाचल प्रदेश
3. असम और मेघालय
4. नागालैंड, मणिपुर, मिजोरम और त्रिपुरा
5. उप-हिमालयी पश्चिम बंगाल और सिक्किम
6. गंगीय पश्चिम बंगाल
7. ओडिशा
8. झारखंड
9. बिहार
10. पूर्वी उत्तर प्रदेश
11. पश्चिम उत्तर प्रदेश
12. उत्तराखंड
13. हरियाणा, चंडीगढ़ और दिल्ली
14. पंजाब
15. हिमाचल प्रदेश
16. जम्मू और कश्मीर और लद्दाख
17. पश्चिम राजस्थान
18. पूर्वी राजस्थान
19. पश्चिम मध्य प्रदेश
20. पूर्वी मध्य प्रदेश
21. गुजरात
22. सौराष्ट्र
23. कोंकण और गोवा
24. मध्य महाराष्ट्र
25. मराठवाड़ा
26. विदर्भ
27. छत्तीसगढ़
28. तटीय आंध्र प्रदेश और यनम
29. तेलंगाना
30. रायलसीमा
31. तमिलनाडु, पुडुचेरी और कराईकल
32. तटीय कर्नाटक
33. आंतरिक उत्तरी कर्नाटक
34. आंतरिक दक्षिणी कर्नाटक
35. केरल और माहे
36. लक्षद्वीप



1. Andaman & Nicobar Islands
2. Arunachal Pradesh
3. Assam & Meghalaya
4. Nagaland, Manipur, Mizoram & Tripura
5. Sub-Himalayan West Bengal & Sikkim
6. Gangetic West Bengal
7. Odisha
8. Jharkhand
9. Bihar
10. East Uttar Pradesh
11. West Uttar Pradesh
12. Uttarakhand
13. Haryana, Chandigarh & Delhi
14. Punjab
15. Himachal Pradesh
16. Jammu & Kashmir and Ladakh
17. West Rajasthan
18. East Rajasthan
19. West Madhya Pradesh
20. East Madhya Pradesh
21. Gujarat
22. Saurashtra
23. Konkan & Goa
24. Madhya Maharashtra
25. Marathwada
26. Vidarbha
27. Chhattisgarh
28. Coastal Andhra Pradesh & Yanam
29. Telangana
30. Rayalaseema
31. Tamilnadu, Puducherry & Karaikal
32. Coastal Karnataka
33. North Interior Karnataka
34. South Interior Karnataka
35. Kerala & Mahe
36. Lakshadweep

SPATIAL DISTRIBUTION (% of Stations reporting)

% Stations	Category	% Stations	Category
76-100	Widespread (WS/Most Places)	26-50	Scattered (SCT/A Few Places)
51-75	Fairly Widespread (FWS/Many Places)	1-25	Isolated (ISOL)



Fog



Heavy Snow



Cold Wave



Heavy Rain



Dust Storm



Cold Day



Very Heavy Rain



Heat Wave



Ground Frost



Extremely Heavy Rain



Warm Night



Thunder & Lightning



Hot Day



Hailstorm



Hot & Humid



Dust Raising Winds



Strong Surface Winds

COLOUR CODED WARNING

No Warning (No Action)

Watch (Be Aware)

Alert (Be Prepared To Take Action)

Warning (Take Action)

Probabilistic Forecast

Terms	Probability of Occurrence (%)
Unlikely	< 25
Likely	25 - 50
Very Likely	50 - 75
Most Likely	> 75

* Red colour warning does not mean "Red Alert", Red colour warning means "Take Action".

Forecast and Warning for any day is valid from 0830 hours IST of day till 0830 hours IST of next day.

For more details, kindly visit <https://mausam.imd.gov.in> or contact: 011-2434-4599

(Service to the Nation since 1875)

DEFINITION/CRITERIA

Rain/ Snow *

Heavy: 64.5 to 115.5 mm/cm *
Very Heavy: 115.6 to 204.4 mm/cm *
Extremely Heavy: > 204.4 mm/cm *

Heat Wave

When maximum temperature of a station reaches $\geq 40^{\circ}\text{C}$ for plains and $\geq 30^{\circ}\text{C}$ for hilly regions
(a) Based on Departure from normal

Heat Wave: Maximum Temperature Departure from normal 4.5°C to 6.4°C .

Severe Heat Wave: Maximum Temperature Departure from normal $\geq 6.5^{\circ}\text{C}$

(b). Based on Actual maximum temperature

Heat Wave: When actual maximum temperature $\geq 45^{\circ}\text{C}$.

Severe Heat Wave: When actual maximum temperature $\geq 47^{\circ}\text{C}$

(c). Criteria for heat wave for coastal stations

When maximum temperature departure is $> 4.5^{\circ}\text{C}$ from normal. Heat Wave may be described provided maximum temperature $\geq 37^{\circ}\text{C}$

Warm Night

When maximum temperature remains 40°C

Warm Night: When minimum temperature departure 4.5°C to 6.4°C .

Severe Warm Night: When minimum temperature departure $> 6.4^{\circ}\text{C}$.

Cold Wave

When minimum temperature of a station $\leq 10^{\circ}\text{C}$ for plains and $\leq 0^{\circ}\text{C}$ for hilly regions.
(a). Based on departure

Cold Wave: Minimum Temperature Departure from normal -4.5°C to -6.4°C .

Severe Cold Wave: Minimum Temperature Departure from normal $\leq -6.5^{\circ}\text{C}$

(b) Based on actual Minimum Temperature (for Plains only)

Cold Wave: When Minimum Temperature is $\leq 4.0^{\circ}\text{C}$

Severe Cold Wave: When Minimum Temperature is $\leq 2.0^{\circ}\text{C}$

(c) For Coastal Stations

When Minimum Temperature departure is $\leq -4.5^{\circ}\text{C}$ & actual Minimum Temperature is $\leq 15^{\circ}\text{C}$

Cold Day

When minimum temperature of a station $\leq 10^{\circ}\text{C}$ for plains and $\leq 0^{\circ}\text{C}$ for hilly regions
Based on departure

Cold Day: Maximum Temperature Departure from normal -4.5°C to -6.4°C .

Severe Cold Day: Maximum Temperature Departure from normal $\leq -6.5^{\circ}\text{C}$

Fog

Phenomenon of small droplets suspended in air and the horizontal visibility $< 1\text{km}$

Moderate Fog: When the visibility between 500-200 metres

Dense Fog: when the visibility between 50- 200 metres

Very Dense Fog: when the visibility < 50 metres

Thunderstorm

Sudden electrical discharges manifested by a flash of light (Lightning) and a sharp rumbling sound (thunder)

Dust/Sand Storm

An ensemble of particles of dust or sand energetically lifted to great heights by a strong and turbulent wind.

Frost

Ice deposits on ground

Air temperature $\leq 4^{\circ}\text{C}$ (over Plains)

Squall

A strong wind that rises suddenly, lasts for atleast 1 minute.

Moderate: Wind speed 52-61 kmph

Severe: Wind speed 62-87 kmph

Very Severe: Wind speed > 87 kmph

Sea State

Effect of various waves in the sea over specific area

Rough to very rough: Wind speed 41-62 kmph (22-33 knots) & Wave height 2.5-6 metre

High to very high: Wind speed 63-117 kmph (34-63 knots) & Wave height 6-14 metre

Phenomenal: Wind speed > 117 kmph (> 63 knots) & Wave height > 14 metre

Cyclone

Cyclonic Storm: Wind speed 62-87 kmph (34-47 knots)

Severe Cyclonic Storm: Wind speed 88-117 kmph (48-63 knots)

Very Severe Cyclonic Storm: Wind speed 118-165 kmph (64 - 89 knots)

Extremely Severe Cyclonic Storm: Wind speed 166-220 kmph (90 -119 knots)

Super Cyclone Strom: Wind speed > 220 kmph (> 119 knots)

* Red colour warning does not mean "Red Alert", Red colour warning means "Take Action".
Forecast and Warning for any day is valid from 0830 hours IST of day till 0830 hours IST of next day.
For more details, kindly visit <https://mausam.imd.gov.in> or contact: 011-2434-4599
(Service to the Nation since 1875)