



Government of India
Ministry of Earth Sciences
India Meteorological Department



Press Release
Date: 25th August, 2024
Time of Issue: 1415 hours IST

**Subject: (i) Depression over East Rajasthan and adjoining northwest Madhya Pradesh.
(ii) Low pressure area over south Bangladesh & neighbourhood.
(iii) Very heavy to extremely heavy rainfall likely over Rajasthan, Gujarat, Konkan & Goa, Madhya Maharashtra and West Madhya Pradesh during next 2-3 days.**

Realised weather during past 24 hours till 0830 hours IST of today (Annexure I)

Heavy to very heavy rainfall with extremely heavy falls at isolated places over Gujarat Region, West Madhya Pradesh; **Heavy to very heavy rainfall** at isolated places over Madhya Maharashtra, Konkan & Goa, East Madhya Pradesh, East Rajasthan, Coastal Karnataka; **Heavy rainfall** at isolated places over South Interior Karnataka, Chhattisgarh, Saurashtra & Kutch, Odisha, Coastal Andhra Pradesh & Yanam, Uttarakhand, Jharkhand, Marathwada, Vidarbha, Meghalaya, Telangana and West Rajasthan.

Weather Systems:

(a) Depression over east Rajasthan and adjoining northwest Madhya Pradesh: Yesterday's well marked low pressure area over central parts of north Madhya Pradesh moved westwards, intensified into a depression at 0530 hrs IST of today over northwest Madhya Pradesh and neighbourhood near latitude 24.5°N and longitude 77.3°E, close to Guna. It further moved nearly westwards with a speed of 13 kmph during past 6 hours and lay centered at 1130 hours IST of today, the 25th August over east Rajasthan and adjoining northwest Madhya Pradesh near latitude 24.6°N and longitude 76.5°E, about 80 km west-southwest of to Guna (West Madhya Pradesh) and 90 km southeast of Kota (East Rajasthan). It is likely to move nearly west-southwestwards, intensify further into a deep depression over east Rajasthan during next 12 hours. Thereafter, it will continue to move nearly west-southwestwards across south Rajasthan and Gujarat slowly and emerge into northeast Arabian Sea off Saurashtra & Kutch and adjoining Pakistan coasts around morning of 29th August.

(b) A Low Pressure Area formed over south Bangladesh & neighbourhood: Under the influence of the upper air cyclonic circulation over south Bangladesh & neighbourhood, a low pressure area has formed over the same region at 1130 IST of today, the 25th August 2024. It is likely to become more marked and move west-northwestwards across Gangetic West Bengal, north Odisha and Jharkhand during next 2 days.

Forecast & Warnings (upto 7 days):

❖ West & Central India (For District wise Extremely heavy rainfall warning maps of Madhya Pradesh, Gujarat State and Rajasthan State valid for 25th to 29th August, refer figures. 1-3 in pages 9-11)

- ✓ Fairly widespread to widespread light/moderate rainfall very likely over West & Central India during the week.
- ✓ Isolated **Heavy rainfall** very likely over East Madhya Pradesh on 25th-26th; Marathwada on 25th; Vidarbha on 25th, 30th & 31st; Konkan & Goa during 28th-30th; Madhya Maharashtra on 28th & 29th; Chhattisgarh on 25th & during 29th-31st; Gujarat Region on 30th; Saurashtra & Kutch on 31st August.
- ✓ Isolated **very heavy rainfall** also very likely over West Madhya Pradesh on 26th; Konkan & Goa and Madhya Maharashtra on 27th August.
- ✓ Isolated **extremely heavy rainfall also very likely** over West Madhya Pradesh on 25th; Gujarat Region during 25th-28th; Saurashtra & Kutch during 25th-29th; Konkan & Goa and ghat areas of Madhya Maharashtra on 25th & 26th August.

❖ East & Northeast India

- ✓ Fairly widespread to widespread light/moderate rainfall very likely over East & Northeast India, during the week.
- ✓ Isolated **heavy rainfall** very likely over Assam on 25th; Arunachal Pradesh on 25th & 31st; Jharkhand on 25th, 27th & 28th; Assam & Meghalaya during 26th-28th; Odisha on 26th, 28th & 29th; Nagaland, Manipur, Mizoram & Tripura during 26th-28th & on 30th & 31st; Gangetic West Bengal on 26th; Bihar on 26th & 27th; Andaman & Nicobar Islands on 27th-29th August.
- ✓ Isolated **very heavy rainfall** also very likely over Meghalaya, Gangetic West Bengal on 25th; Odisha and Jharkhand on 26th August.
- ✓ Isolated **extremely heavy rainfall also very likely** over Tripura, Mizoram on 25th August.

❖ South Peninsular India:

- ✓ Scattered to Fairly widespread light/moderate rainfall very likely over Kerala & Mahe, Lakshadweep, Coastal Andhra Pradesh & Yanam, Coastal Karnataka, Interior Karnataka; isolated to scattered rainfall over Tamil Nadu, Puducherry & Karaikal, Rayalaseema & Telangana during the week.
- ✓ Isolated **heavy rainfall** very likely over Kerala & Mahe during 25th-31st; Telangana on 25th & 29th; North Interior Karnataka during 25th, 26th & 31st; South Interior Karnataka on 25th, 29th & 30th; Coastal Karnataka during 27th-28th & 30th-31st August.
- ✓ Isolated **very heavy rainfall** also very likely over Coastal Karnataka during 25th, 26th & 29th August.

❖ Northwest India

- ✓ Fairly widespread to widespread light/moderate rainfall very likely over Himachal Pradesh, Uttarakhand, Rajasthan; isolated to scattered rainfall over Jammu-Kashmir-Ladakh-Gilgit-Baltistan-Muzaffarabad, Punjab, Uttar Pradesh Haryana-Chandigarh-Delhi during the week.
- ✓ Isolated **heavy rainfall** very likely over Uttar Pradesh on 25th & 26th; Uttarakhand on 25th & 27th; Jammu-Kashmir-Ladakh-Gilgit-Baltistan-Muzaffarabad during 26th-29th; Himachal Pradesh on 27th; Punjab & Haryana-Chandigarh on 27th & 28th August.
- ✓ Isolated **very heavy rainfall** also very likely over West Rajasthan on 25th & 27th; East Rajasthan on 27th August.
- ✓ Isolated **extremely heavy rainfall also very likely** over East Rajasthan on 25th & 26th; West Rajasthan on 26th August.

For more details, kindly refer: https://mausam.imd.gov.in/responsive/all_india_forecast_bulletin.php

For Districtwise warnings refer: <https://mausam.imd.gov.in/responsive/districtWiseWarningGIS.php>

Wind warning:

- Strong surface wind speed reaching 30-40 kmph gusting to 50 kmph is very likely to prevail over Madhya Pradesh during 25th& 26th August.
- Strong surface wind speed reaching 30-40 kmph gusting to 50 kmph is very likely to prevail over South Rajasthan on 25th& 26th August and squally wind speed reaching 40-50 kmph gusting to 60 kmph is likely to prevail on South Rajasthan on 27th August.
- Strong surface wind speed reaching 30-40 kmph gusting to 50 kmph is very likely over Gujarat state, along and off Gujarat & adjoining Pakistan and north Maharashtra coasts and northeast Arabian Sea on 26thAugust, becoming squally wind speed reaching 40-50 kmph gusting to 60 kmph over the same region on 27th& 28thAugust.
- Squally wind speed reaching 55-65 kmph gusting to 75 kmph is likely to prevail along & off Gujarat & adjoining Pakistan coasts and northeast and adjoining eastcentral Arabian Sea on 29th August. Squally wind speed reaching 40-50 kmph gusting to 60 kmph for interior district of Gujarat state on 29thAugust.
- Squally wind speed reaching 40-50 kmph gusting to 60 kmph is likely to prevail along and off north Maharashtra coasts on 28th& 29thAugust.

Fisherman warning:

- Fishermen are advised not venture into Northeast & adjoining Eastcentral Arabian Sea and along & off Gujarat & adjoining Pakistan and north Maharashtra Coasts till 30th August.
- Fishermen are advised not to venture into North Bay of Bengal and along & off North Odisha, West Bengal, Bangladesh coasts on 25th and 26th August.

For more details, kindly refer to National bulletin on: <https://rsmcnewdelhi.imd.gov.in/>

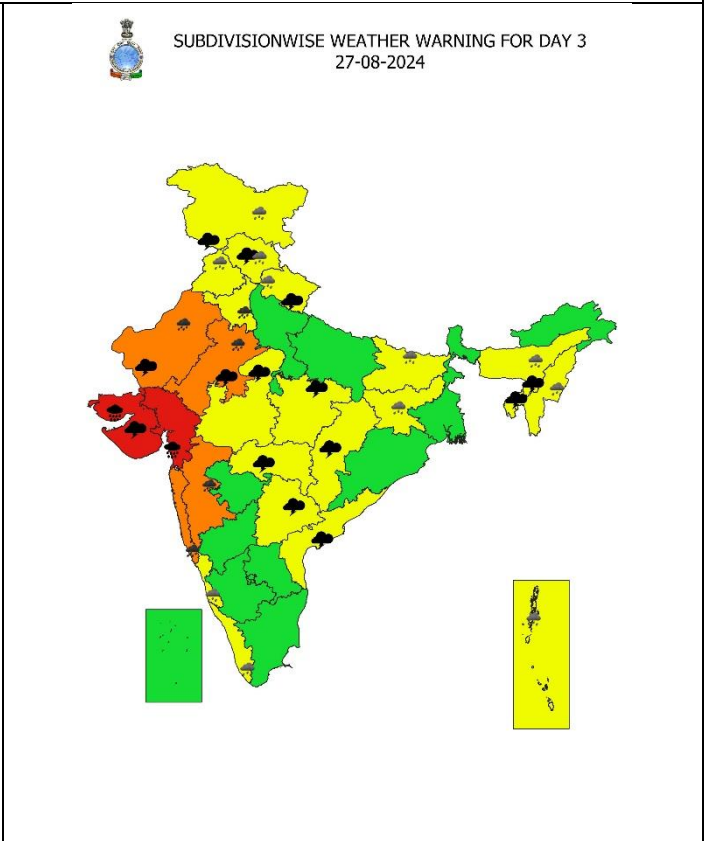
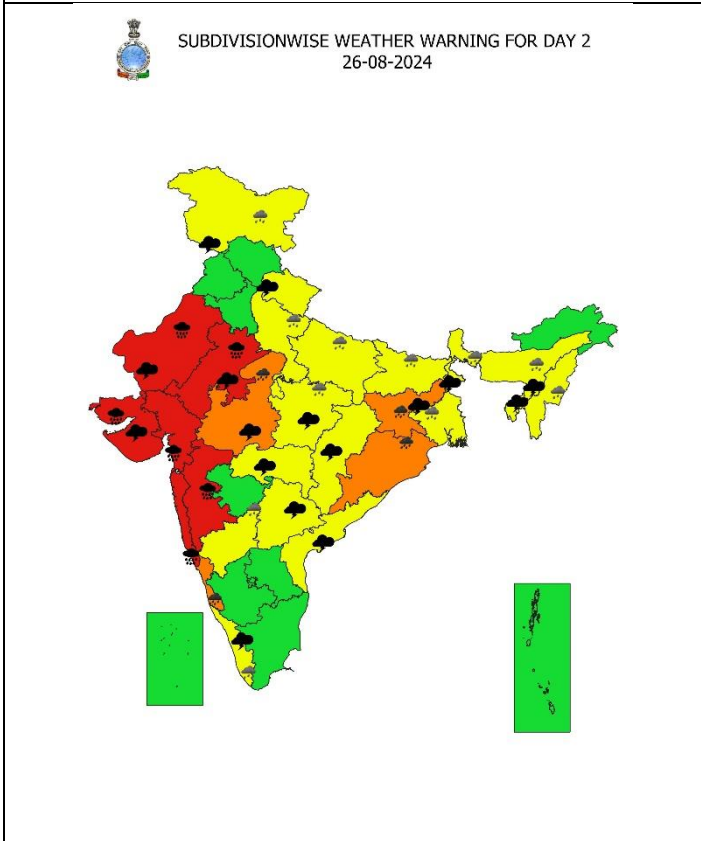
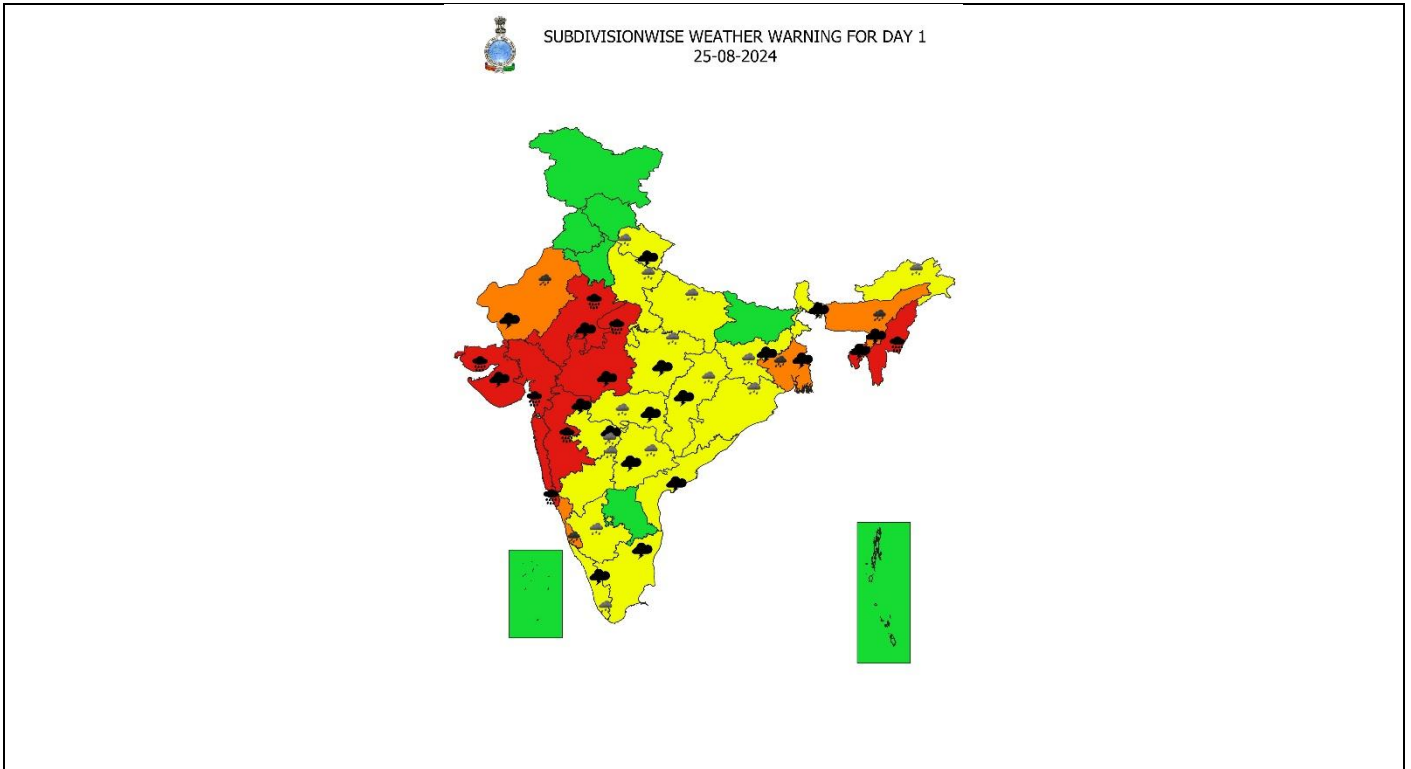
Significant Rainfall recorded during past 24 hours till 0830 hours IST of today 25.08.2024 (in cm):

- ❖ **Gujarat Region:** Vapi (dist Valsad) 36, Pardi (dist Valsad) 35, Kaprada (dist Valsad) 34, Valsad_ Kvk Aws (dist Valsad) 34, Umerpada (dist Surat) 31, Khergam (dist Navsari) 29, Daman (dist Daman) 29, Daman_aws (dist Daman) 29, Silvassa (dist Dadara & Nagar Haveli) 27, Ukai (dist Surat) 27, Dharampur (dist Valsad) 27, Daman Fmo (dist Daman) 26, Madhbun (dist Dadara & Nagar Haveli) 24, Sagbara (dist Narmada) 20, Khanvel (dist Dadara & Nagar Haveli) 20, Vyara (dist Tapi) 19, Vansda (dist Navsari) 18, Songadh (dist Tapi) 17, Waghai (dist Dangs) 15, Dang_kvks Aws (dist Dangs) 15, Dangs (ahwa) (dist Dangs) 15, Mangrol (dist Surat) 15, Subir (dist Dangs) 15, Umernagar (dist Valsad) 14, Valsad (dist Valsad) 14, Narmada_kvks Aws (dist Narmada) 13, Khanpur (dist Mahisagar) 12, Chhota Udepur (dist Chhota Udepur) 12, Kadi (dist Mehsana) 12, Garbada (dist Dahod) 12, Uchchhal (dist Tapi) 11, Palsana (dist Surat) 11, Kamrej (dist Surat) 10, Valod (dist Tapi) 10, Quant (dist Chhota Udepur) 10, Dahod (dist Dahod) 10, Dahod_aws (dist Dahod) 10, Dahod_kvks Aws (dist Dahod) 10, Chikhli (dist Navsari) 9, Mandvi (dist Surat) 9, Dolvan (dist Tapi) 9, Patan (dist Patan) 9, Tarapur (dist Anand) 9, Morva Hadaf (dist Panchmahal) 9, Dediapada (dist Narmada) 8, Limkheda (dist Dahod) 8, Mansa (dist Gandhinagar) 8, Kukarmunda (dist Tapi) 8, Gandevi (dist Navsari) 8, Surat_kvks Aws (dist Surat) 8, Deesa (dist Banaskantha) 8, Mahesana (dist Mehsana) 7, Netrang (dist Bharuch) 7, Dholka (dist Ahmedabad) 7, Jambughoda (dist Panchmahal) 7, Virpur (dist Mahisagar) 7, Vyara_aws (dist Tapi) 7, Surat City (dist Surat) 7, Vijapur (dist Mehsana) 7, Kalol (dist Panchmahal) 7, Ghoghamba (dist Panchmahal) 7, Mahuva (dist Surat) 7, Poshina (dist Sabarkantha) 7, Bardoli (dist Surat) 7, Garudeshwar (dist Narmada) 7, Kalol(g) (dist Gandhinagar) 7, Anand (dist Anand) 7;
- ❖ **West Madhya Pradesh:** Kathiwada (dist Alirajpur) 21, Biaora (dist Rajgarh) 14, Alirajpur (dist Alirajpur) 14, Begumganj (dist Raisen) 13, Navibagh Aet (dist Bhopal) 13, Bairagarh Airport (dist Bhopal) 11, Maheshwar (dist Khargone) 11, Badarwas (dist Shivpuri) 9, Raisen-aws (dist Raisen) 9, Bhimpur (dist Betul) 9, Budhni (dist Sehore) 9, Khategaon (dist Dewas) 9, Seoni Malwa (dist Narmadapuram) 8, Chicholi (dist Betul) 8, Bhopal Arera Hills (dist Bhopal) 8, Kurwai (dist Vidisha) 8, Rehti (dist Sehore) 8, Shahpur (dist Betul) 7, Rahatgaon (dist Harda) 7, Godadongri (dist Betul) 7, Tal (dist Ratlam) 7, Satwas (dist Dewas) 7, Sitamau (dist Mandsaur) 7, Hatpiplaya (dist Dewas) 7, Sarangpur (dist Rajgarh) 7, Bagli (dist Dewas) 7, Shajapur (dist Shajapur) 7, Sonkatch (dist Dewas) 7, Alot (dist Ratlam) 7;
- ❖ **Madhya Maharashtra:** Velhe (dist Pune) 18, Lonavala_agri (dist Pune) 16, Peth (dist Nashik) 16, Harsul - Fmo (dist Nashik) 16, Navapur (dist Nandurbar) 14, Igatpuri (dist Nashik) 14, Surgana (dist Nashik) 13, Dhadgaon/akrani- Hydro (dist Nandurbar) 12, Akole (dist Ahmednagar) 11, Mahabaleshwar- Imd Obsy (dist Satara) 11, Ozharkheda - Fmo (dist Nashik) 11, Paud Mulshi (dist Pune) 11, Nandurbar (dist Nandurbar) 8, Gidhade - Fmo (dist Dhule) 8, Dhule (dist Dhule) 8, Bodwad (dist Jalgaon) 8, Akkalkuwa (dist Nandurbar) 8, Jamner (dist Jalgaon) 7, Taloda (dist Nandurbar) 7, Mulher - Fmo (dist Nashik) 7, Vani-arg (dist Nashik) 7, Chalisgaon (dist Jalgaon) 7, Trimbakshwar (dist Nashik) 7, Chandgad (dist Kolhapur) 7;
- ❖ **Konkan & Goa:** Pernem (dist North Goa) 16, Matheran (dist Raigad) 15, Vikramgad (dist Palghar) 14, Valpoi (dist North Goa) 14, Dahanu - Imd Obsy (dist Palghar) 14, Quepem (dist South Goa) 14, Sangameshwar Devrukh (dist Ratnagiri) 14, Dabolim N.a.s.- Navy (dist South Goa) 13, Khalapur (dist Raigad) 13, Mapusa (dist North Goa) 13, Talasari (dist Palghar) 13, Tala (dist Raigad) 13, Sanguem (dist South Goa) 13, Kudal (dist Sindhudurg) 12, Mokheda - Fmo (dist Palghar) 12, Lanja (dist Ratnagiri) 12, Mormugao - Pmo Imd (dist South Goa) 12, Devgad (dist Sindhudurg) 12, Pen (dist Raigad) 11, Dodamarg (dist Sindhudurg) 11, Jawhar (dist Palghar) 11, Panjim - Imd Obsy (dist North Goa) 11, Ratnagiri - Imd Obsy (dist Ratnagiri) 11, Karjat_agri (dist Raigad) 11, Khed (dist Ratnagiri) 11, Margao (dist South Goa) 11, Mulde_Agri (dist Sindhudurg) 10, Thane (dist Thane) 10, Murud (dist Raigad) 10, Canacona (dist South Goa) 10, Panvel_agri (dist Raigad) 9, Tbia Imd Part Time (dist Thane) 9, Sawantwadi (dist Sindhudurg) 9, Malvan (dist Sindhudurg) 9, Palghar_agri (dist Palghar) 9, Roha (dist Raigad) 9, Rajapur (dist Ratnagiri) 9, Mahad (dist Raigad) 9, Dapoli_agri (dist Ratnagiri) 8, Santacruz - Imd Obsy (dist

- Mumbai Suburban) 8, Ulhasnagar (dist Thane) 8, Vaibhavwadi (dist Sindhudurg) 8, Rameshwar_agri (dist Sindhudurg) 8, Ponda (dist North Goa) 8, Murbad (dist Thane) 8, Guhagarh (dist Ratnagiri) 8, Awalegaon-Arg (dist Sindhudurg) 8, Vengurla Arg (dist Sindhudurg) 7, Mangaon (dist Raigad) 7, Bhiwandi (dist Thane) 7, Uran (dist Raigad) 7, Shahapur (dist Thane) 7, Wakwali_agri (dist Ratnagiri) 7, Pawarwadi - Arg (dist Ratnagiri) 7, Poladpur (dist Raigad) 7;
- ❖ **East Madhya Pradesh:** Badamalhera (dist Chhatarpur) 14, Tendukheda (dist Damoh) 14, Panagar (dist Jabalpur) 12, Khurai (dist Sagar) 11, Tikamgarh-aws (dist Tikamgarh) 11, Badwara (dist Katni) 10, Bina (dist Sagar) 9, Buxwaha (dist Chhatarpur) 9, Orchha (dist Niwari) 9, Badagaon Dhasan (dist Tikamgarh) 7, Karkeli (dist Umariya) 7, Baldevgarh (dist Tikamgarh) 7, Chandia (dist Umariya) 7, Jabera (dist Damoh) 7;
 - ❖ **East Rajasthan:** Dausa (dist Dausa) 14, Reodar Sr (dist Sirohi) 13, Chothkabarwara Sr (dist Sawai Madhopur) 12, Sangod (dist Kota) 9, Baran (dist Baran) 9, Kishanganj (dist Baran) 9, Pindwara (dist Sirohi) 8, Banera Sr (dist Bhilwara) 8, Ajmer Tehsil Sr (dist Ajmer) 8, Pratapgarh (dist Pratapgarh) 8, Ajmer (dist Ajmer) 8, Kherwara (dist Udaipur) 8, Khandar Sr (dist Sawai Madhopur) 8, Nasirabad (dist Ajmer) 7, Kotri (dist Bhilwara) 7, Sarmathura Sr (dist Dholpur) 7, Malerainadunger Sr (dist Sawai Madhopur) 7, Jawaja (dist Ajmer) 7, Malpura (dist Tonk) 7, Garhi (dist Banswara) 7, Mangliawas Sr (dist Ajmer) 7;
 - ❖ **Coastal Karnataka:** Castle Rock (dist Uttara Kannada) 13, Ankola (dist Uttara Kannada) 11, Kadra (dist Uttara Kannada) 9, Gersoppa (dist Uttara Kannada) 9,
 - ❖ **South Interior Karnataka:** Kottigehara (dist Chikkamagaluru) 11;
 - ❖ **Chhattisgarh:** Gangalur (dist Bijapur) 11, Lalpur Thana (dist Mungeli) 7;
 - ❖ **Saurashtra & Kutch:** Talala (dist Gir Somnath) 10, Mendarda (dist Junagadh) 9, Visavadar (dist Junagadh) 8, Keshod (dist Junagadh) 7, Babra (dist Amreli) 7;
 - ❖ **Odisha:** Khaira (Balasore) 10, Banki (Cuttack) 9, Ghasipura (Keonjhar) 9, Chendipada (Angul) 9, Kaptipada (Mayurbhanj) 8, Swam-patna (Keonjhar) 8, Anandpur (Keonjhar) 8, Laikera (Jharsuguda) 8, Jhumpura (Keonjhar) 8, Kirmira (Jharsuguda) 8, Bijatala (Mayurbhanj) 7, Udala (Mayurbhanj) 7, Oupada (Balasore) 7, Jaipur (Balasore) 7;
 - ❖ **Coastal Andhra Pradesh & Yanam:** Palakonda(arg) (dist Parvathipuram Manyam) 9;
 - ❖ **Uttarakhand:** Dharchula (Pithoragarh) 9, Loharkhet (Bageshwar) 7;
 - ❖ **Jharkhand:** Chakulia (dist East Singhbhum) 9, Bau Kanke (dist Ranchi) 7;
 - ❖ **Marathwada:** Khultabad (dist Chh. Sambhajinagar) 9;
 - ❖ **Vidarbha:** Nagbhir (dist Chandrapur) 8, Chikhaldia (dist Amraoti) 7;
 - ❖ **Meghalaya:** Ratacherra (dist East Jaintia Hills) 8;
 - ❖ **Telangana:** Mirdoddi (dist Siddipet) 7;
 - ❖ **West Rajasthan:** Raniwada Sr (dist Jalore) 7;

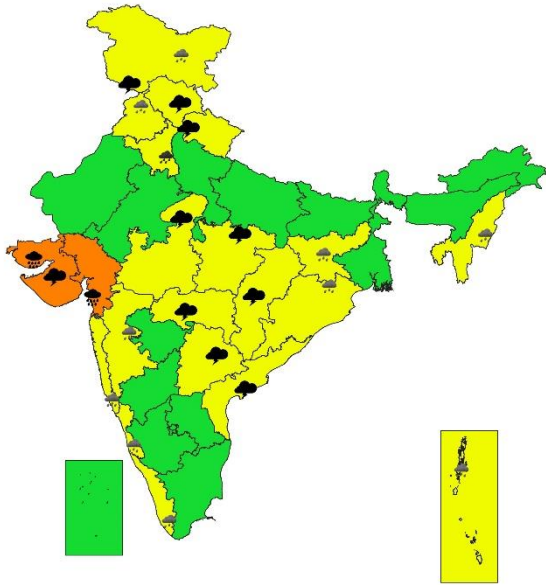
7 Days Rainfall Forecast								
S. No.	Subdivision	25-Aug	26-Aug	27-Aug	28-Aug	29-Aug	30-Aug	31-Aug
		Day 1	Day 2	Day 3	Day 4	Day 5	Day 6	Day 7
1	ANDAMAN & NICOBAR ISLANDS	WS	WS	WS	WS	WS	WS	WS
2	ARUNACHAL PRADESH	FWS	SCT	SCT	SCT	SCT	FWS	FWS
3	ASSAM & MEGHALAYA	FWS	FWS	FWS	FWS	FWS	FWS	FWS
4	NAGALAND, MANIPUR, MIZORAM & TRIPURA	WS	WS	WS	FWS	FWS	FWS	FWS
5	SUB-HIMALAYAN WEST BENGAL & SIKKIM	FWS	FWS	SCT	SCT	SCT	SCT	FWS
6	GANGETIC WEST BENGAL	WS	WS	FWS	FWS	FWS	SCT	SCT
7	ODISHA	FWS	FWS	SCT	FWS	FWS	FWS	FWS
8	JHARKHAND	WS	WS	FWS	FWS	FWS	SCT	SCT
9	BIHAR	SCT	FWS	FWS	FWS	SCT	SCT	SCT
10	EAST UTTAR PRADESH	FWS	SCT	SCT	SCT	SCT	SCT	SCT
11	WEST UTTAR PRADESH	FWS	FWS	SCT	SCT	SCT	SCT	SCT
12	UTTARAKHAND	FWS	FWS	FWS	FWS	FWS	FWS	FWS
13	HARYANA CHANDIGARH & DELHI	ISOL	SCT	FWS	FWS	SCT	SCT	SCT
14	PUNJAB	SCT	SCT	SCT	SCT	SCT	SCT	SCT
15	HIMACHAL PRADESH	SCT	FWS	WS	FWS	FWS	SCT	SCT
16	JAMMU & KASHMIR AND LADAKH	ISOL	SCT	FWS	SCT	SCT	SCT	SCT
17	WEST RAJASTHAN	FWS	SCT	SCT	ISOL	ISOL	ISOL	ISOL
18	EAST RAJASTHAN	WS	WS	SCT	ISOL	ISOL	SCT	SCT
19	WEST MADHYA PRADESH	WS	WS	SCT	SCT	FWS	FWS	FWS
20	EAST MADHYA PRADESH	FWS	FWS	FWS	FWS	WS	WS	WS
21	GUJARAT REGION	WS	WS	WS	WS	WS	WS	WS
22	SAURASHTRA & KUTCH	WS	WS	WS	WS	WS	WS	WS
23	KONKAN & GOA	WS	WS	WS	WS	WS	WS	WS
24	MADHYA MAHARASHTRA	WS	WS	FWS	FWS	SCT	FWS	FWS
25	MARATHAWADA	FWS	SCT	SCT	SCT	SCT	SCT	SCT
26	VIDARBHA	WS	FWS	FWS	FWS	WS	WS	WS
27	CHHATTISGARH	FWS	SCT	FWS	FWS	FWS	FWS	FWS
28	COASTAL ANDHRA PRADESH & YANAM	SCT	SCT	SCT	SCT	FWS	FWS	SCT
29	TELANGANA	FWS	SCT	SCT	SCT	FWS	SCT	SCT
30	RAYALASEEMA	ISOL	ISOL	ISOL	ISOL	SCT	SCT	ISOL
31	TAMILNADU PUDUCHERRY & KARAIKAL	ISOL	ISOL	ISOL	ISOL	ISOL	ISOL	ISOL
32	COASTAL KARNATAKA	WS	WS	WS	WS	WS	WS	WS
33	NORTH INTERIOR KARNATAKA	FWS	FWS	SCT	SCT	FWS	FWS	SCT
34	SOUTH INTERIOR KARNATAKA	SCT	SCT	ISOL	SCT	FWS	FWS	FWS
35	KERALA & MAHE	FWS	FWS	FWS	WS	WS	FWS	FWS
36	LAKSHADWEEP	SCT	SCT	SCT	FWS	FWS	FWS	FWS

- As the lead period increases forecast accuracy decreases.

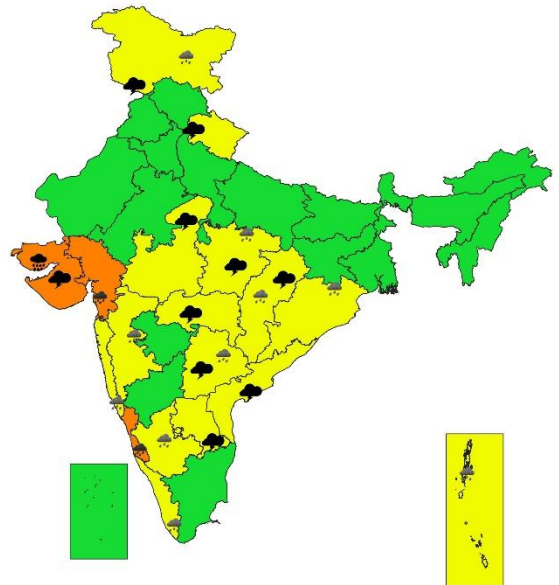




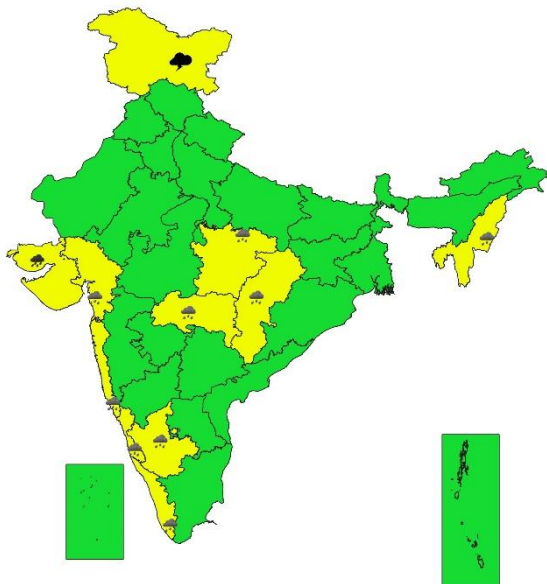
SUBDIVISIONWISE WEATHER WARNING FOR DAY 4
28-08-2024



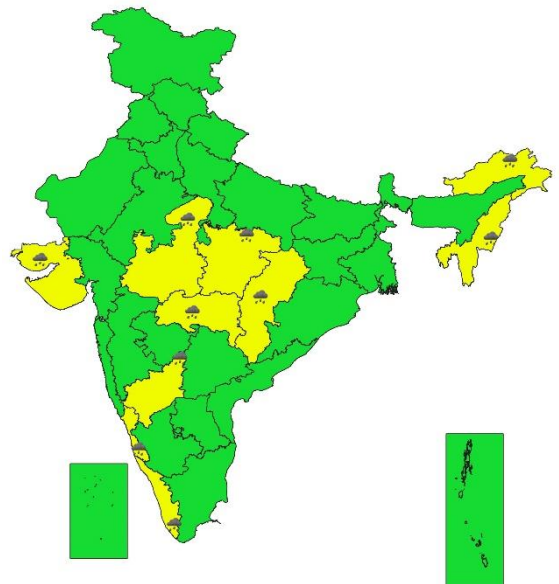
SUBDIVISIONWISE WEATHER WARNING FOR DAY 5
29-08-2024



SUBDIVISIONWISE WEATHER WARNING FOR DAY 6
30-08-2024



SUBDIVISIONWISE WEATHER WARNING FOR DAY 7
31-08-2024



- Action may be taken based on ORANGE AND RED COLOUR warnings.
- Vulnerable regions likely urban and hilly areas action may be initiated for heavy rainfall warning.
- As the lead period increases forecast accuracy decreases.

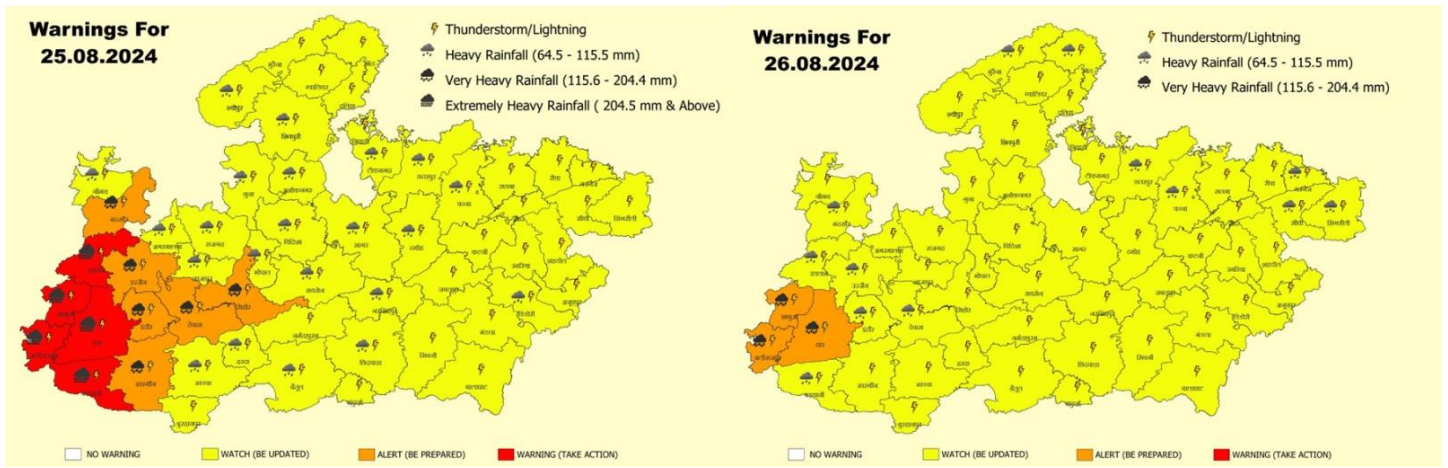


Fig. 1 District wise warning maps of Madhya Pradesh valid for 25th & 26th August

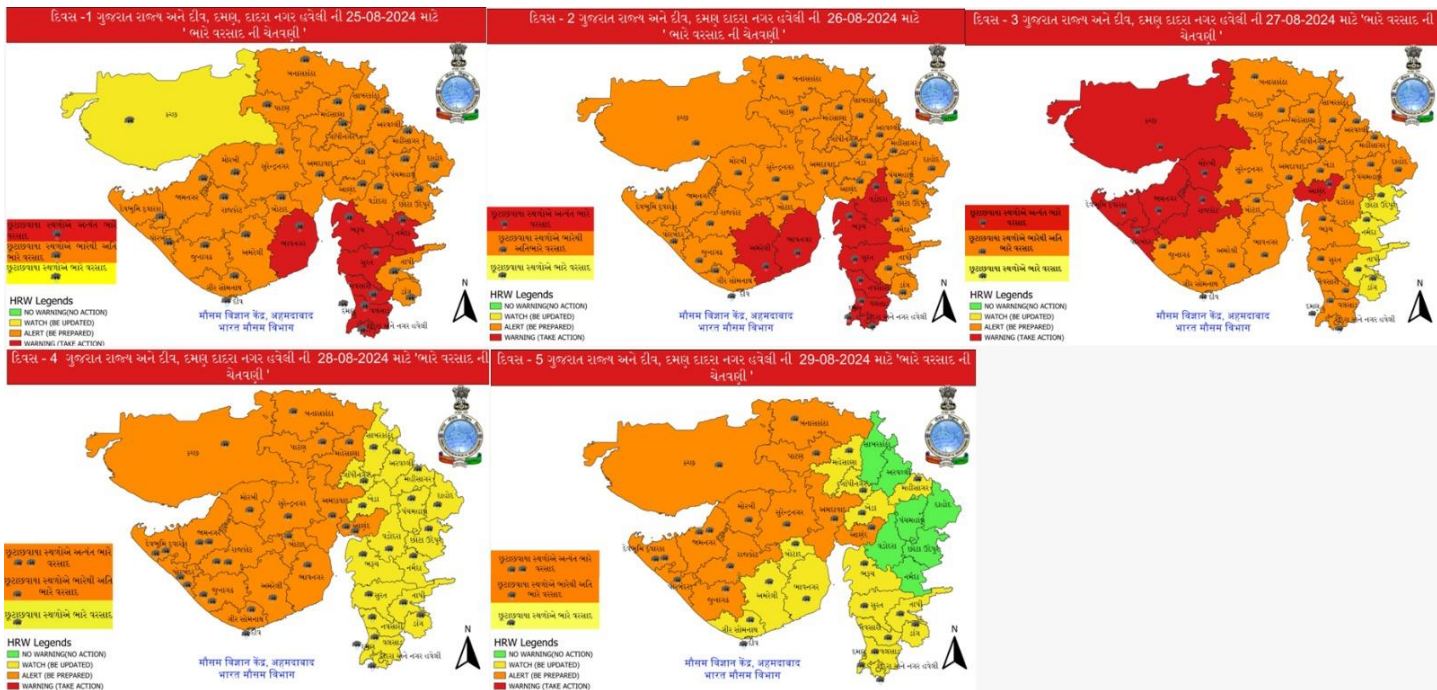


Fig. 2 District wise warning maps of Gujarat State valid for 25th to 29th August

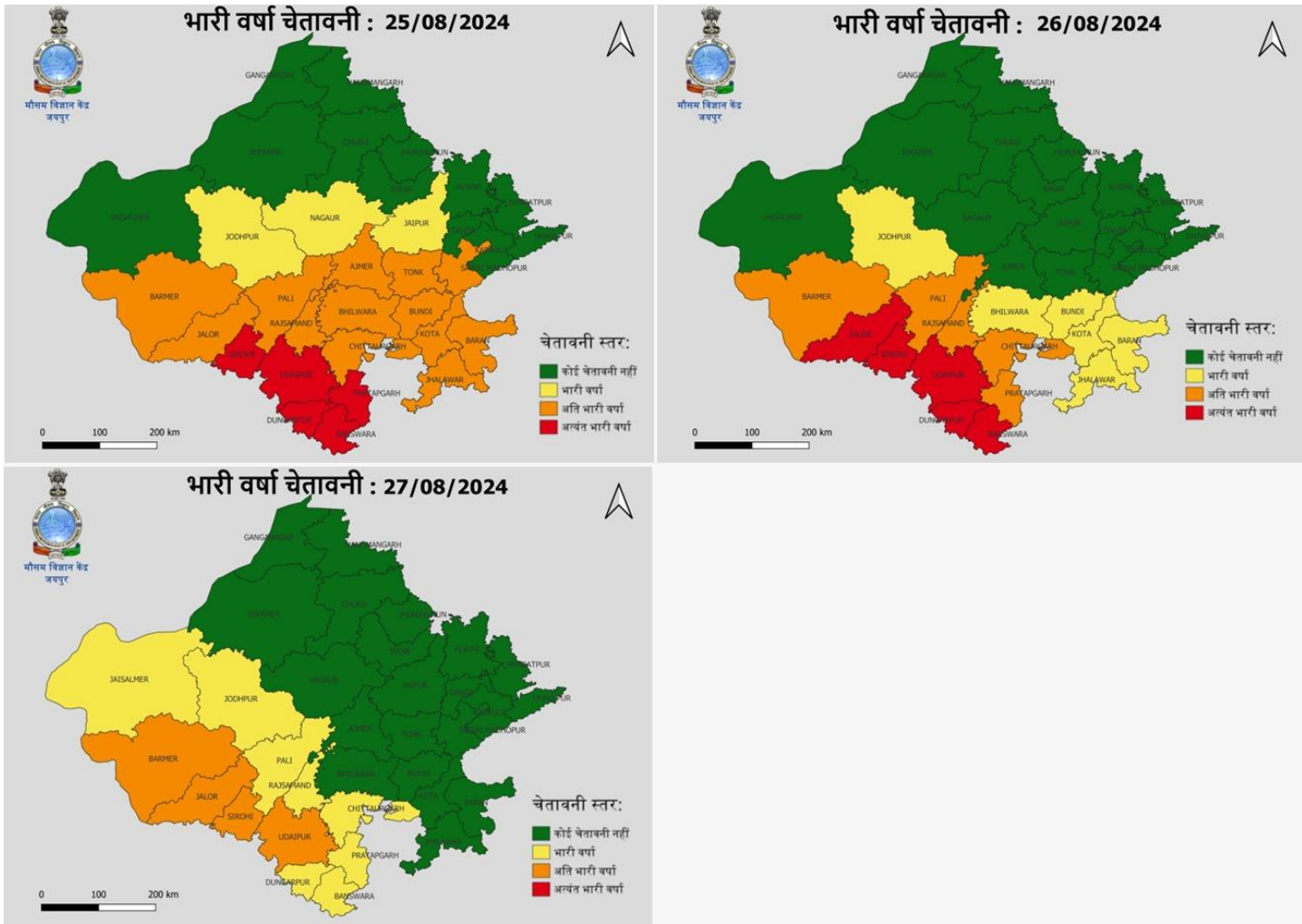


Fig. 3 District wise warning maps of Rajasthan State valid for 25th to 29th August

Impact due to

- ✓ **Isolated extremely heavy rainfall very likely over** Tripura, Mizoram, West Madhya Pradesh on 25th; East Rajasthan, Konkan & Goa and ghat areas of Madhya Maharashtra on 25th & 26th; West Rajasthan on 26th; Gujarat Region during 25th-28th; Saurashtra & Kutch during 25th-29th August.
- ✓ **Very heavy rainfall** at isolated over Assam & Meghalaya, Gangetic West Bengal on 25th; West Rajasthan on 25th & 27th; West Madhya Pradesh, Odisha and Jharkhand on 26th; East Rajasthan, Konkan & Goa and Madhya Maharashtra on 27th; Coastal Karnataka during 25th, 26th & 29th August.
- ✓ **Moderate to High flash flood risk** likely over East Rajasthan, Gujarat Region, Madhya Maharashtra, West Madhya Pradesh; **Low to Moderate flash flood risk** likely over Madhya Maharashtra, Konkan & Goa on 25th & 26th August. (ANNEXURE IV)
- ✓ Localized Flooding of roads, water logging in low lying areas and closure of underpasses mainly in urban areas of the above region.
- ✓ Occasional reduction in visibility due to heavy rainfall.
- ✓ Disruption of traffic in major cities due to water logging in roads leading to increased travel time.
- ✓ Minor damage to kutcha roads.
- ✓ Possibilities of damage to vulnerable structure.
- ✓ Localized Landslides/Mudslides/landslips/mud slips/land sinks/mud sinks.
- ✓ Damage to horticulture and standing crops in some areas due to inundation.
- ✓ It may lead to riverine flooding in some river catchments (for riverine flooding please visit Web page of CWC)

Action Suggested

- ✓ Fishermen are advised not venture into Northeast & adjoining Eastcentral Arabian Sea and along & off Gujarat & adjoining Pakistan and north Maharashtra Coasts till 30th August.
- ✓ Fishermen are advised not to venture into North Bay of Bengal and along & off North Odisha, West Bengal, Bangladesh coasts on 25th and 26th August.
- ✓ Judicious regulation of offshore/onshore Operations.
- ✓ Check for traffic congestion on your route before leaving for your destination.
- ✓ Follow any traffic advisories that are issued in this regard.
- ✓ Avoid going to areas that face the water logging problems often.
- ✓ Avoid staying in vulnerable structure.

Agromet advisories for Heavy Rainfall likely over various parts of the country

- ✓ Drain out excess water from field crops and horticultural crops in Arunachal Pradesh, Assam & Meghalaya, Rajasthan, Madhya Pradesh, Chhattisgarh, Konkan & Goa, Madhya Maharashtra, Odisha and Jharkhand.
- ✓ Make provision for draining out excess water from standing crop fields and fruit orchards to avoid water stagnation in Uttar Pradesh, Marathwada, Vidarbha, Kerala, Karnataka and Telangana.
- ✓ Drain out excess water from *kharif* rice, groundnut, sesame, soybean, ginger, turmeric and vegetables to prevent water logging in **Mizoram**; from pigeon pea, soybean, cotton and sesame crop fields in **Saurashtra & Kutch**; from transplanted rice, castor, cotton, pearl millet, groundnut, sesame and maize fields in **Gujarat**; from rice, maize, green gram, black gram, soybean, sesame and vegetable fields in **Rajasthan**.
- ✓ Due to prolonged heavy rainfall, transplanted *Aman* rice and vegetable crops in low-lying areas of **Tripura** are submerged, with young rice seedlings unlikely to recover. It is recommended to procure short-duration rice varieties for re-sowing after the cessation of rains, or alternatively, prepare in advance for winter vegetable cultivation.
- ✓ Provide mechanical support to horticultural crops & staking to vegetables.

Flash Flood Guidance:**24 hours Outlook for the Flash Flood Risk (FFR) till 1130 IST of 26-08-2024 :**

Moderate to High flash flood risk likely over few watersheds & neighbourhoods of following Met Sub-divisions during next 24 hours.

East Rajasthan – Dausa, Sawai Madhopur, Karauli, Banswara, Baran, Bundi, Dungarpur, Jhalawar, Kota, Pratapgarh, Rajsmand, Sirohi and Udaipur districts.

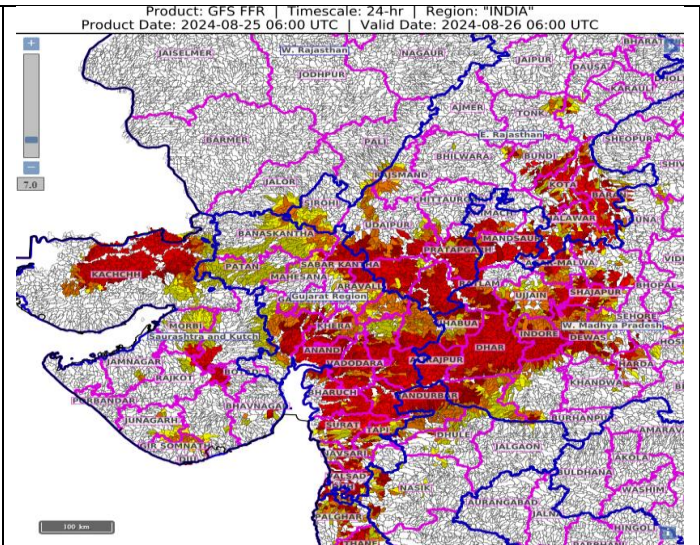
West Madhya Pradesh - Shajapur, Ujjain, Dewas, Nimach, Mandsaur, Ratlam, Jhabua, Dhar, Alirajpur, Barwani, Khargone & Indore districts.

Gujarat Region - Dadar & Nagar Haveli, Daman, Anand, Aravalli, Bharuch, Chhota Udepur, Dahod, Gandhinagar, Khera, Mahisagar, Narmada, Navsari, Panchmahal, Sabar Kantha, Surat, Tapi, Vadodara and Valsad districts.

Madhya Maharashtra - Dhule, Jalgaon, Nandurbar & Nasik districts.

Saurashtra & Kutch - Bhavnagar, Surendranagar, Gir Somnath, Rajkot Morbi and Kachchh districts.

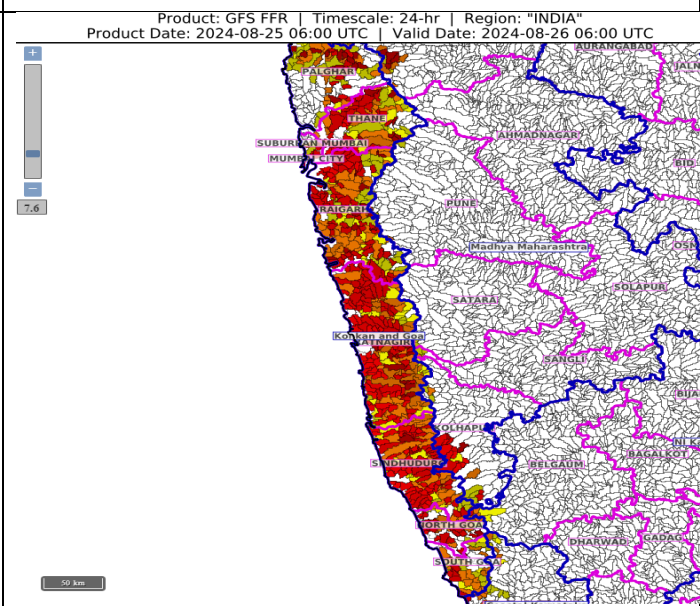
Surface runoff/ Inundation may occur at some fully saturated soils & low-lying areas over area of concern as shown in map due to expected rainfall occurrence in next 24 hours.

**24 hours Outlook for the Flash Flood Risk (FFR) till 1130 IST of 26-08-2024 :**

Low to Moderate flash flood risk likely over few watersheds & neighbourhoods of following Met Sub-divisions during next 24 hours.

Konkan & Goa - North Goa, South Goa, Mumbai City, Palghar, Raigarh, Ratnagiri, Sindhudurg, Suburban Mumbai and Thane districts.
Madhya Maharashtra - Satara districts.

Surface runoff/ Inundation may occur at some fully saturated soils & low-lying areas over area of concern as shown in map due to expected rainfall occurrence in next 24 hours.

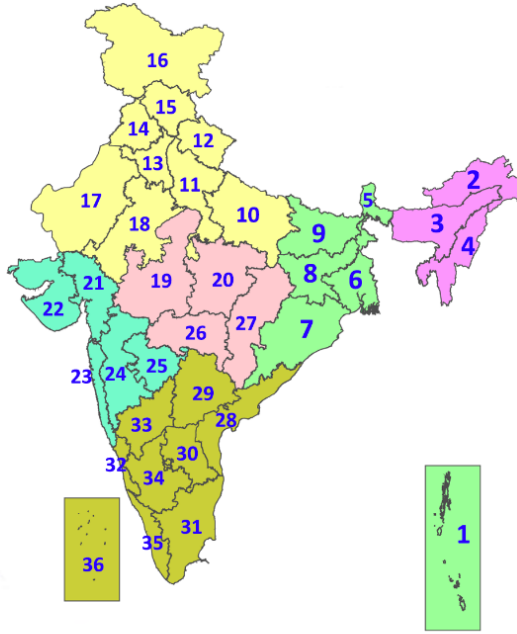


Legends & abbreviations:

- ❖ **Heavy Rain:**64.5-115.5mm; **Very Heavy Rain:**115.6-204.4mm; **Extremely Heavy Rain:** >204.4mm.
- ❖ **Obsy:** Observatory; **AWS:** Automatic Weather Station; **ARG:** Automatic Rain Gauge; **dist:** District; **NH:** National Highway; **KVK:** Krishi Vigyan Kendra; **DVC:** Damodar Valley Corporation; **PTO:** Part Time Office, **Aero:** Aerodrome, **IAF:** Indian Air Force.
- ❖ **Region wise classification of meteorological Sub-Divisions:**
 - **Northwest India:** Western Himalayan Region (Jammu-Kashmir-Ladakh-Gilgit-Baltistan-Muzaffarabad, Himachal Pradesh and Uttarakhand); Punjab, Haryana-Chandigarh-Delhi; West Uttar Pradesh, East Uttar Pradesh, West Rajasthan and East Rajasthan.
 - **Central India:** West Madhya Pradesh, East Madhya Pradesh, Vidarbha and Chhattisgarh.
 - **East India:** Bihar, Jharkhand, Sub-Himalayan West Bengal & Sikkim; Gangetic West Bengal, Odisha and Andaman & Nicobar Islands.
 - **Northeast India:** Arunachal Pradesh, Assam & Meghalaya and Nagaland, Manipur, Mizoram & Tripura.
 - **West India:** Gujarat Region, Saurashtra & Kutch, Konkan & Goa, Madhya Maharashtra and Marathawada.

LEGENDS

1. अंडमान और निकोबार द्वीपसमूह
2. अरुणाचल प्रदेश
3. असम और मेघालय
4. नागालैंड, मणिपुर, मिजोरम और त्रिपुरा
5. उप-हिमालयी पश्चिम बंगाल और सिक्किम
6. गंगीय पश्चिम बंगाल
7. ओडिशा
8. झारखंड
9. बिहार
10. पूर्वी उत्तर प्रदेश
11. पश्चिम उत्तर प्रदेश
12. उत्तराखंड
13. हरियाणा, चंडीगढ़ और दिल्ली
14. पंजाब
15. हिमाचल प्रदेश
16. जम्मू और कश्मीर और लद्दाख
17. पश्चिम राजस्थान
18. पूर्वी राजस्थान
19. पश्चिम मध्य प्रदेश
20. पूर्वी मध्य प्रदेश
21. गुजरात
22. सौराष्ट्र
23. कोंकण और गोवा
24. मध्य महाराष्ट्र
25. मराठवाड़ा
26. विदर्भ
27. छत्तीसगढ़
28. तटीय आंध्र प्रदेश और यनम
29. तेलंगाना
30. रायलसीमा
31. तमिलनाडु, पुडुचेरी और कराईकल
32. तटीय कर्नाटक
33. आंतरिक उत्तरी कर्नाटक
34. आंतरिक दक्षिणी कर्नाटक
35. केरल और माहे
36. लक्षद्वीप



1. Andaman & Nicobar Islands
2. Arunachal Pradesh
3. Assam & Meghalaya
4. Nagaland, Manipur, Mizoram & Tripura
5. Sub-Himalayan West Bengal & Sikkim
6. Gangetic West Bengal
7. Odisha
8. Jharkhand
9. Bihar
10. East Uttar Pradesh
11. West Uttar Pradesh
12. Uttarakhand
13. Haryana, Chandigarh & Delhi
14. Punjab
15. Himachal Pradesh
16. Jammu & Kashmir and Ladakh
17. West Rajasthan
18. East Rajasthan
19. West Madhya Pradesh
20. East Madhya Pradesh
21. Gujarat
22. Saurashtra
23. Konkan & Goa
24. Madhya Maharashtra
25. Marathwada
26. Vidarbha
27. Chhattisgarh
28. Coastal Andhra Pradesh & Yanam
29. Telangana
30. Rayalaseema
31. Tamilnadu, Puducherry & Karaikal
32. Coastal Karnataka
33. North Interior Karnataka
34. South Interior Karnataka
35. Kerala & Mahe
36. Lakshadweep

SPATIAL DISTRIBUTION (% of Stations reporting)

% Stations	Category	% Stations	Category
76-100	Widespread (WS/Most Places)	26-50	Scattered (SCT/A Few Places)
51-75	Fairly Widespread (FWS/Many Places)	1-25	Isolated (ISOL)

- | | | |
|----------------------|----------------------|--------------|
| Fog | Heavy Snow | Cold Wave |
| Heavy Rain | Dust Storm | Cold Day |
| Very Heavy Rain | Heat Wave | Ground Frost |
| Extremely Heavy Rain | Warm Night | |
| Thunder & Lightning | Hot Day | |
| Hailstorm | Hot & Humid | |
| Dust Raising Winds | Strong Surface Winds | |

COLOUR CODED WARNING

No Warning (No Action)
Watch (Be Aware)
Alert (Be Prepared To Take Action)
Warning (Take Action)

Probabilistic Forecast

Terms	Probability of Occurrence (%)
Unlikely	< 25
Likely	25 - 50
Very Likely	50 - 75
Most Likely	> 75

* Red colour warning does not mean "Red Alert", Red colour warning means "Take Action".

Forecast and Warning for any day is valid from 0830 hours IST of day till 0830 hours IST of next day.

For more details, kindly visit <https://mausam.imd.gov.in> or contact: 011-2434-4599

(Service to the Nation since 1875)

DEFINITION/CRITERIA

Rain/ Snow *

Heavy: 64.5 to 115.5 mm/cm *
Very Heavy: 115.6 to 204.4 mm/cm*
Extremely Heavy: > 204.4 mm/cm *

Heat Wave

When maximum temperature of a station reaches $\geq 40^\circ\text{C}$ for plains and $\geq 30^\circ\text{C}$ for hilly regions
(a) Based on Departure from normal

Heat Wave: Maximum Temperature Departure from normal 4.5°C to 6.4°C .
Severe Heat Wave: Maximum Temperature Departure from normal $\geq 6.5^\circ\text{C}$

(b). Based on Actual maximum temperature

Heat Wave: When actual maximum temperature $\geq 45^\circ\text{C}$.
Severe Heat Wave: When actual maximum temperature $\geq 47^\circ\text{C}$

(c). Criteria for heat wave for coastal stations

When maximum temperature departure is $>4.5^\circ\text{C}$ from normal. Heat Wave may be described provided maximum temperature $\geq 37^\circ\text{C}$

Warm Night

When maximum temperature remains 40°C

Warm Night: When minimum temperature departure 4.5°C to 6.4°C .
Severe Warm Night: When minimum temperature departure $>6.4^\circ\text{C}$.

Cold Wave

When minimum temperature of a station $\leq 10^\circ\text{C}$ for plains and $\leq 0^\circ\text{C}$ for hilly regions.
(a). Based on departure

Cold Wave: Minimum Temperature Departure from normal -4.5°C to -6.4°C .
Severe Cold Wave: Minimum Temperature Departure from normal $\leq -6.5^\circ\text{C}$

(b) Based on actual Minimum Temperature (for Plains only)

Cold Wave : When Minimum Temperature is $\leq 4.0^\circ\text{C}$
Severe Cold Wave: When Minimum Temperature is $\leq 2.0^\circ\text{C}$

(c) For Coastal Stations

When Minimum Temperature departure is $\leq -4.5^\circ\text{C}$ & actual Minimum Temperature is $\leq 15^\circ\text{C}$

Cold Day

When minimum temperature of a station $\leq 10^\circ\text{C}$ for plains and $\leq 0^\circ\text{C}$ for hilly regions
Based on departure

Cold Day: Maximum Temperature Departure from normal -4.5°C to -6.4°C .
Severe Cold Day: Maximum Temperature Departure from normal $\leq -6.5^\circ\text{C}$

Fog

Phenomenon of small droplets suspended in air and the horizontal visibility $< 1\text{km}$

Moderate Fog: When the visibility between 500-200 metres
Dense Fog: when the visibility between 50- 200 metres
Very Dense Fog: when the visibility < 50 metres

Thunderstorm

Sudden electrical discharges manifested by a flash of light (Lightning) and a sharp rumbling sound (thunder)

Dust/Sand Storm

An ensemble of particles of dust or sand energetically lifted to great heights by a strong and turbulent wind.

Frost

Ice deposits on ground

Air temperature $\leq 4^\circ\text{C}$ (over Plains)

Squall

A strong wind that rises suddenly, lasts for atleast 1 minute.

Moderate: Wind speed 52-61 kmph
Severe: Wind speed 62-87 kmph
Very Severe: Wind speed >87 kmph

Sea State

Effect of various waves in the sea over specific area

Rough to very rough: Wind speed 41-62 kmph (22-33 knots) & Wave height 2.5-6 metre
High to very high: Wind speed 63-117 kmph (34-63 knots) & Wave height 6-14 metre
Phenomenal: Wind speed >117 kmph (>63 knots) & Wave height >14 metre

Cyclone

Cyclonic Storm: Wind speed 62-87 kmph (34-47 knots)
Severe Cyclonic Storm: Wind speed 88-117 kmph (48-63 knots)
Very Severe Cyclonic Storm: Wind speed 118-165 kmph (64 - 89 knots)
Extremely Severe Cyclonic Storm: Wind speed 166-220 kmph (90 -119 knots)
Super Cyclone Strom: Wind speed >220 kmph (>119 knots)

* Red colour warning does not mean "Red Alert", Red colour warning means "Take Action".
Forecast and Warning for any day is valid from 0830 hours IST of day till 0830 hours IST of next day.
For more details, kindly visit <https://mausam.imd.gov.in> or contact: 011-2434-4599
(Service to the Nation since 1875)