



Government of India  
Ministry of Earth Sciences



India Meteorological Department

## PRESS RELEASE-6

Time of issue: 1650 hours IST

Dated: 30<sup>th</sup> August, 2024

**Sub: (a) Cyclonic Storm “ASNA” (pronounced as As-Na) over Kachchh coast and adjoining areas of Pakistan & Northeast Arabian Sea and (b) Well Marked Low Pressure Area over Westcentral & adjoining Northwest Bay of Bengal**

**(a) Cyclonic Storm “ASNA” (pronounced as As-Na) over Kachchh coast and adjoining areas of Pakistan & Northeast Arabian Sea and (b) Well Marked Low Pressure Area over Westcentral & adjoining Northwest Bay of Bengal.**

Yesterday's Deep Depression over Saurashtra & Kachchh moved westwards and intensified into a **Cyclonic Storm “ASNA” (pronounced as As-Na)** in the morning (1130 hours IST) of 30<sup>th</sup> August, 2024 over the same region near latitude 23.5°N and longitude 67.9°E, 190 km west-northwest of Bhuj (Gujarat), 100 km west-northwest of Naliya (Gujarat) and 170 km southeast of Karachi (Pakistan).

It is likely to continue to move nearly west-northwestwards over northeast Arabian Sea away from Indian coast during subsequent 2 days.

Forecast track and intensity are given in the following table:

Date/Time(IST)	Position (Lat. °N/ long. °E)	Maximum sustained surface wind speed (Kmph)	Category of cyclonic disturbance
30.08.24/1130	23.5/67.9	60-70 gusting to 80	Cyclonic Storm
30.08.24/1730	23.5/67.5	65-75 gusting to 85	Cyclonic Storm
30.08.24/2330	23.6/66.8	70-80 gusting to 90	Cyclonic Storm
31.08.24/0530	23.7/65.9	70-80 gusting to 90	Cyclonic Storm
31.08.24/1130	23.7/65.9	70-80 gusting to 90	Cyclonic Storm
31.08.24/2330	23.9/64.3	65-75 gusting to 85	Cyclonic Storm
01.09.24/1130	23.8/62.4	60-70 gusting to 80	Cyclonic Storm
01.09.24/2330	23.4/61.1	50-60 gusting to 70	Deep Depression
02.09.24/1130	22.5/59.9	40-50 gusting to 60	Depression

### Warnings:

#### **(i) Rainfall Warning:**

##### **Gujarat State:**

**Saurashtra & Kachchh:** Light to moderate rainfall at most places **heavy to very heavy rainfall** at isolated places over Kachchh and adjoining districts of Saurashtra on 30<sup>th</sup> August.

Contact: Cyclone Warning Division, Office of the Director General of Meteorology, India Meteorological Department, Ministry of Earth Sciences, E-mail: cyclonewarningdivision@gmail.com, Website: [rsmcnewdelhi.imd.gov.in](http://rsmcnewdelhi.imd.gov.in), Spatial rainfall distribution: Isolated: <25%, A few: 26-50%, Many: 51-75%, Most: 76-100%, Rainfall amount (mm): Heavy rain: 64.5 – 115.5, Very heavy rain: 115.6 – 204.4, Extremely heavy rain: 204.5 or more.

**(ii) Wind warning:**

- Squally wind speed reaching 45-55 kmph gusting to 65 kmph is likely over the interior districts of South Gujarat Region and Saurashtra & Kutch on the 30<sup>th</sup> August.
- Squally wind speed reaching 60-70 kmph gusting to 80 kmph is prevailing along & off Gujarat coasts & adjoining Pakistan coasts and over northeast & adjoining eastcentral Arabian Sea. It is likely to increase becoming 70-80 kmph gusting to 90 kmph over northeast & adjoining eastcentral Arabian Sea from night of 30<sup>th</sup> August till 1<sup>st</sup> September morning and decrease gradually thereafter.
- Gale wind speed reaching 65-75 kmph gusting to 85 kmph is likely to prevail over northwest and adjoining westcentral Arabian Sea off Pakistan and southeast Iran coasts from morning of 31<sup>st</sup> August till 1<sup>st</sup> September, morning. Thereafter, the winds would gradually decrease gradually becoming squally wind speed reaching 50-60 kmph gusting to 70 kmph by evening of 1<sup>st</sup> September and 40-50 kmph gusting to 60 kmph by morning of 2<sup>nd</sup> September.
- Strong wind speed reaching 40-50 kmph gusting to 60 kmph is likely to prevail along and off north Maharashtra coasts during 30<sup>th</sup> to 31<sup>st</sup> August.

**(iii) Sea condition:**

- Squally weather with Rough to very Rough sea conditions is very likely to prevail along & off Gujarat & adjoining north Maharashtra Coasts till 31<sup>st</sup> August.
- Very rough to high sea condition is likely to prevail over northeast & adjoining eastcentral and Arabian Sea off Gujarat coast and along & off Pakistan coasts during 30<sup>th</sup> August to 1<sup>st</sup> September.
- Very rough to high Sea condition is likely to prevail over northwest and adjoining westcentral Arabian Sea off Pakistan and southeast Iran coasts from 31<sup>st</sup> August till 2<sup>nd</sup> September.

**(iv) Fishermen warning:**

Fishermen are advised not venture into

- Northeast & adjoining Eastcentral Arabian Sea and along & off Gujarat & adjoining north Maharashtra Coasts till 31<sup>st</sup> August.
- Northeast & adjoining eastcentral Arabian Sea off Gujarat coast and along & off Pakistan coasts during 30<sup>th</sup> August to 1<sup>st</sup> September.
- Northwest & adjoining westcentral Arabian Sea and along & off Pakistan and southeast Iran coasts from 31<sup>st</sup> August till 2<sup>nd</sup> September.

**(v) Advisory for offshore/onshore Exploration and Production (E & P) Operators:**

- The small ships and offshore -onshore E & P operators, shipping and port authorities along & off Gujarat & north Maharashtra Coasts and Northeast & adjoining Eastcentral Arabian Sea are advised to keep watch on developing weather and take necessary actions on 30<sup>th</sup> August.

Contact: Cyclone Warning Division, Office of the Director General of Meteorology, India Meteorological Department, Ministry of Earth Sciences, E-mail: [cyclonewarningdivision@gmail.com](mailto:cyclonewarningdivision@gmail.com), Website: [rsmcnewdelhi.imd.gov.in](http://rsmcnewdelhi.imd.gov.in), Spatial rainfall distribution: Isolated: <25%, A few: 26-50%, Many: 51-75%, Most: 76-100%, Rainfall amount (mm): Heavy rain: 64.5 – 115.5, Very heavy rain: 115.6 – 204.4, Extremely heavy rain: 204.5 or more.

**(b) Well Marked Low Pressure Area over Westcentral & adjoining Northwest Bay of Bengal.**

Yesterday's low pressure area over central and adjoining north Bay of Bengal lay as well marked low pressure area over westcentral & adjoining northwest Bay of Bengal off north Andhra Pradesh & South in the morning (1130 hours IST) of 30<sup>th</sup> August, 2024.

It is likely to move further west-northwestwards towards north Andhra Pradesh and adjoining south Odisha coasts, intensify into a depression over westcentral and adjoining northwest Bay of Bengal during next 36 hours.

**Warnings:**

**(i) Rainfall Warning:**

**Odisha:** Light to moderate rainfall at most places with heavy to very heavy rainfall at isolated places during 30<sup>th</sup> to 31<sup>st</sup> August. Light to moderate rainfall at most places with isolated heavy rainfall likely on 1<sup>st</sup> September.

**Coastal Andhra Pradesh:** Light to moderate rainfall at most places with heavy rainfall at isolated places during 30<sup>th</sup> August to 1<sup>st</sup> September and heavy to very heavy rainfall at isolated places on 30<sup>th</sup> and 31<sup>st</sup> August.

**(ii) Wind warning:**

- Squally weather with wind speed reaching 30-40 kmph gusting to 50 kmph is likely to prevail over Westcentral and adjoining Northwest Bay of Bengal on 30<sup>th</sup> becoming 45-55 kmph gusting to 65 kmph on 31<sup>st</sup> August.
- Squally wind speed reaching 45-55 kmph gusting to 65 kmph is likely to prevail along & off North Andhra Pradesh & south Odisha coasts on 31<sup>st</sup> August.

**(iii) Sea condition:**

- Rough sea condition is very likely to prevail over Westcentral and adjoining Northwest Bay of Bengal till 31<sup>st</sup> August.
- Rough sea condition is very likely to prevail along & off North Andhra Pradesh & south Odisha coasts on 31 August.

**(iv) Fishermen warning:**

Fishermen are advised not venture into

- Westcentral & adjoining northwest Bay of Bengal till 31<sup>st</sup> August and along & off south Odisha and north Andhra Pradesh Coasts on 31<sup>st</sup> August.

**(v) Advisory for offshore/onshore Exploration and Production (E & P) Operators:**

- The small ships and offshore -onshore E & P operators, shipping and port authorities along & off north Andhra Pradesh & south Odisha coasts and westcentral and adjoining northwest Bay of Bengal are advised to keep watch on developing weather and take necessary actions on 30<sup>th</sup> August.

Contact: Cyclone Warning Division, Office of the Director General of Meteorology, India  
Meteorological Department, Ministry of Earth Sciences, E-mail: [cyclonewarningdivision@gmail.com](mailto:cyclonewarningdivision@gmail.com),  
Website: [rsmcnewdelhi.imd.gov.in](http://rsmcnewdelhi.imd.gov.in), Spatial rainfall distribution: Isolated: <25%, A few: 26-50%, Many: 51-75%, Most: 76-100%, Rainfall amount (mm): Heavy rain: 64.5 – 115.5, Very heavy rain: 115.6 – 204.4, Extremely heavy rain: 204.5 or more.

### ❖ **Impact Expected**

- ☐ Localized Flooding of roads, water logging in low lying areas and closure of underpasses mainly in urban areas of the above region.
- ☐ Occasional reduction in visibility due to heavy rainfall.
  - Reduction of visibility over sea area due to sea spray induced by strong wind and heavy rainfall.
- ☐ Disruption of traffic in major cities due to water logging in roads leading to increased travel time.
- ☐ Minor damage to kutcha roads.
- ☐ Possibilities of damage to vulnerable structure.
- ☐ Localized Landslides/Mudslides/landslips/mud slips/land sinks/mud sinks.
- ☐ Damage to horticulture and standing crops in some areas due to inundation.
- ☐ It may lead to riverine flooding in some river catchments (for riverine flooding please visit Web page of CWC)

### ❖ **Action Suggested**

Fishermen are advised not venture into

- Northeast & adjoining Eastcentral Arabian Sea and along & off Gujarat & adjoining north Maharashtra Coasts till 31<sup>st</sup> August.
- Northeast & adjoining eastcentral Arabian Sea off Gujarat coast and along & off Pakistan coasts during 30<sup>th</sup> August to 1<sup>st</sup> September.
- Northwest & adjoining westcentral Arabian Sea and along & off Pakistan and southeast Iran coasts from 31<sup>st</sup> August till 2<sup>nd</sup> September.
- Westcentral & adjoining northwest Bay of Bengal till 31<sup>st</sup> August and along & off south Odisha and north Andhra Pradesh Coasts on 31<sup>st</sup> August.
- Judicious regulation of offshore/onshore Operations
- Judicious regulation of surface transports including railways and roadways.
- Check for traffic congestion on your route before leaving for your destination.
- Follow any traffic advisories that are issued in this regard.
- Avoid going to areas that face the water logging problems often.
- Avoid staying in vulnerable structure.

❖ **Agromet Advisories for Heavy Rainfall** likely over Gujarat, Odisha and Andhra Pradesh due to both systems

- ☐ Make provision for draining out excess water from crop fields to avoid water stagnation in Gujarat State, Odisha and Andhra Pradesh.
- ☐ Provide mechanical support to horticultural crops and staking to vegetables

All associated graphics have been kept in Annexure-1. The 24 hours accumulated realised rainfall ( $\geq 7$  cm) ending at 0830 hours IST of 29th August is kept in Annexure-2.

Next Press Release will be issued at 1330 hours IST of tomorrow, the 30th August, 2024.

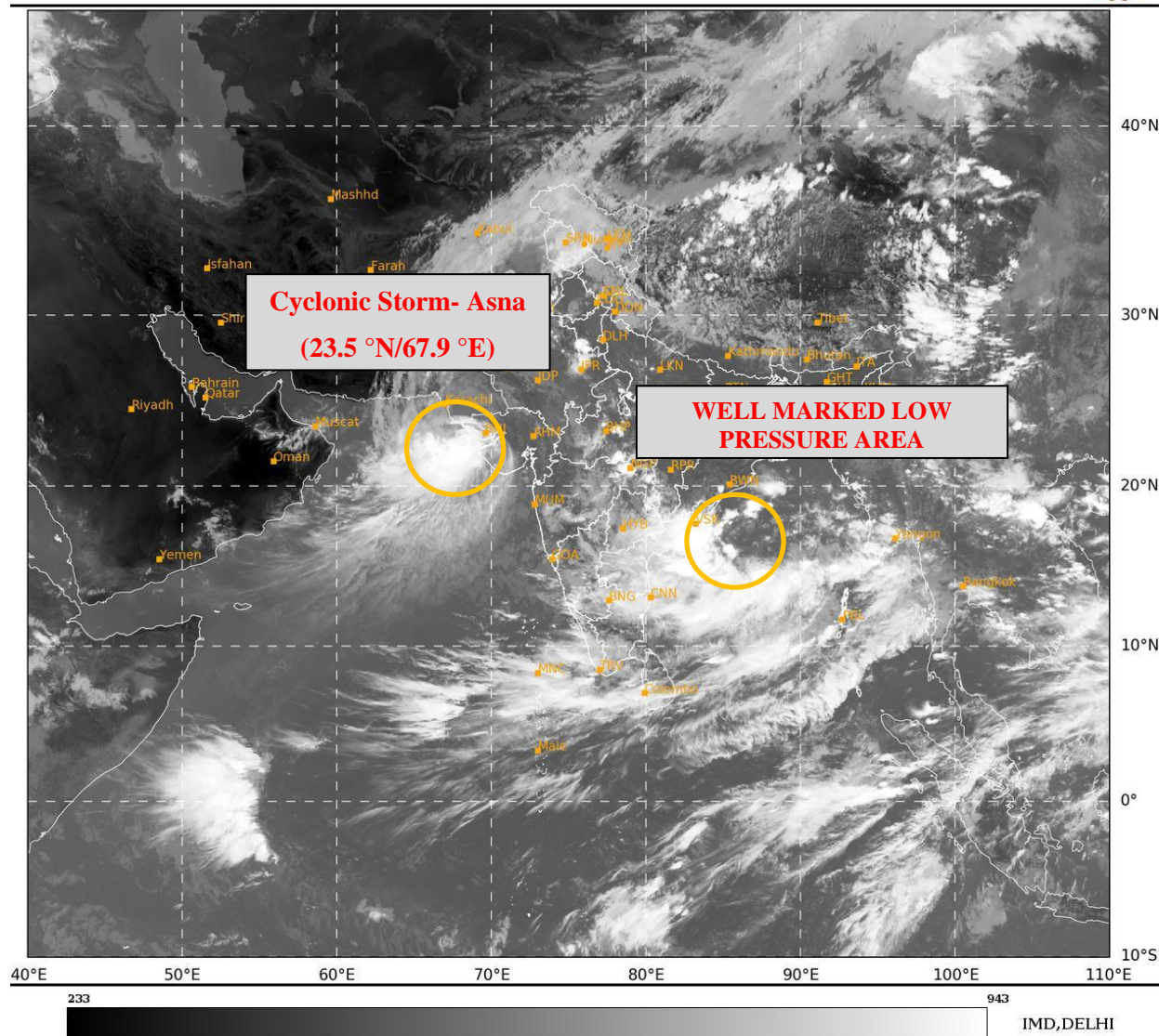
**Contact:** Cyclone Warning Division, Office of the Director General of Meteorology, India  
**Meteorological Department, Ministry of Earth Sciences, E-mail:** cyclonewarningdivision@gmail.com,  
**Website:** [rsmcnewdelhi.imd.gov.in](http://rsmcnewdelhi.imd.gov.in), **Spatial rainfall distribution:** Isolated: <25%, A few: 26-50%, Many: 51-75%, Most: 76-100%, **Rainfall amount (mm):** Heavy rain: 64.5 – 115.5, Very heavy rain: 115.6 – 204.4, Extremely heavy rain: 204.5 or more.



## Annexure – I

SAT : INSAT-3DR IMG  
IMG\_TIR1 10.8 um  
LIC Mercator

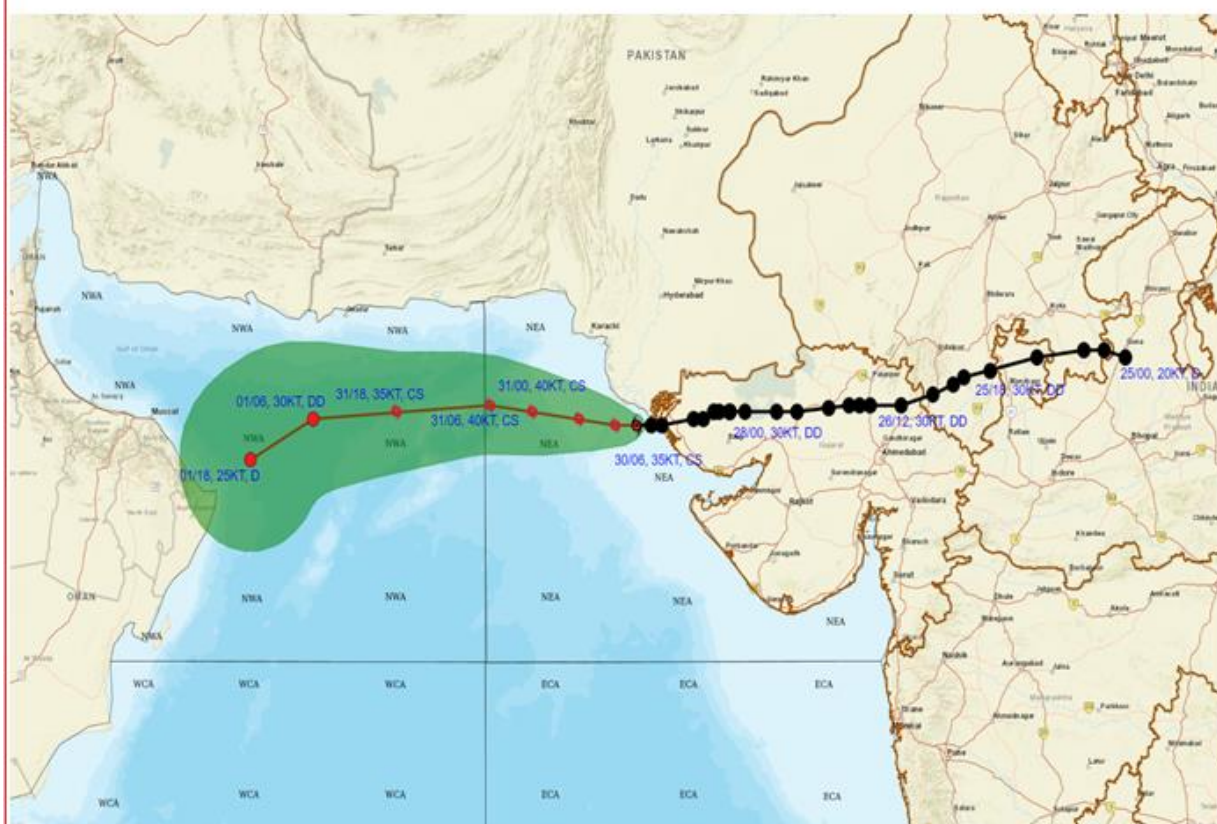
30-08-2024/(0715 to 0742) GMT  
30-08-2024/(1245 to 1312) IST



Contact: Cyclone Warning Division, Office of the Director General of Meteorology, India  
Meteorological Department, Ministry of Earth Sciences, E-mail: [cyclonewarningdivision@gmail.com](mailto:cyclonewarningdivision@gmail.com),  
Website: [rsmcnewdelhi.imd.gov.in](http://rsmcnewdelhi.imd.gov.in). Spatial rainfall distribution: Isolated: <25%, A few: 26-50%, Many: 51-75%, Most: 76-100%, Rainfall amount (mm): Heavy rain: 64.5 – 115.5, Very heavy rain: 115.6 – 204.4, Extremely heavy rain: 204.5 or more.



**OBSERVED AND FORECAST TRACK OF CYCLONIC STORM ASNA OVER KACHCHH COAST AND ADJOINING AREAS OF PAKISTAN & NORTHEAST ARABIAN SEA BASED ON 0600 UTC (1130 IST) OF 30<sup>TH</sup> AUGUST, 2024.**



DATE/TIME IN UTC  
 IST=UTC + 0530  
 L: LOW PRESSURE AREA  
 WML: WELL MARKED LOW PRESSURE AREA  
 D: DEPRESSION (17-27 KT)  
 DD: DEEP DEPRESSION (28-33 KT)  
 CS: CYCLONIC STORM (34-47 KT)  
 SCS: SEVERE CYCLONIC STORM (48-63 KT)  
 VSCS: VERY SEVERE CYCLONIC STORM (64-89 KT)  
 ESCS: EXTREMELY SEVERE CYCLONIC STORM (90-119 KT)  
 SuCS: SUPER CYCLONIC STORM (≥ 120 KT)

● LESS THAN 34 KT  
 ☯ 34-47 KT  
 ☯ ≥ 48 KT  
 — OBSERVED TRACK  
 — FORECAST TRACK  
 ■ CONE OF UNCERTAINTY

Contact: Cyclone Warning Division, Office of the Director General of Meteorology, India  
 Meteorological Department, Ministry of Earth Sciences, E-mail: cyclonewarningdivision@gmail.com,  
 Website: [rsmcnewdelhi.imd.gov.in](http://rsmcnewdelhi.imd.gov.in), Spatial rainfall distribution: Isolated: <25%, A few: 26-50%, Many:  
 51-75%, Most: 76-100%, Rainfall amount (mm): Heavy rain: 64.5 – 115.5, Very heavy rain: 115.6 –  
 204.4, Extremely heavy rain: 204.5 or more.





**OBSERVED AND FORECAST TRACK ALONGWITH QUADRANT WIND DISTRIBUTION  
OF CYCLONIC STORM ASNA OVER KACHCHH COAST AND ADJOINING AREAS OF  
PAKISTAN & NORTHEAST ARABIAN SEA BASED ON 0600 UTC (1130 IST) OF 30<sup>TH</sup>  
AUGUST, 2024**



**DATE/TIME IN UTC**

IST=UTC + 0530

L: LOW PRESSURE AREA

WML: WELL MARKED LOW PRESSURE AREA

D: DEPRESSION (17-27 KT)

DD: DEEP DEPRESSION (28-33 KT)

CS: CYCLONIC STORM (34-47 KT)

SCS: SEVERE CYCLONIC STORM (48-63KT)

VSCS: VERY SEVERE CYCLONIC STORM (64-89 KT)

ESCS: EXTREMELY SEVERE CYCLONIC STORM (90-119 KT)

SuCS: SUPER CYCLONIC STORM (≥ 120 KT)

● LESS THAN 34 KT

○ 34-47 KT

● ≥ 48 KT

— OBSERVED TRACK

— FORECAST TRACK

— CONE OF UNCERTAINTY

AREA OF MAXIMUM SUSTAINED WIND SPEED:

28-33 KT (52-61 KMPH)

34-49 KT (62-91 KMPH)

50-63 KT (92-117 KMPH)

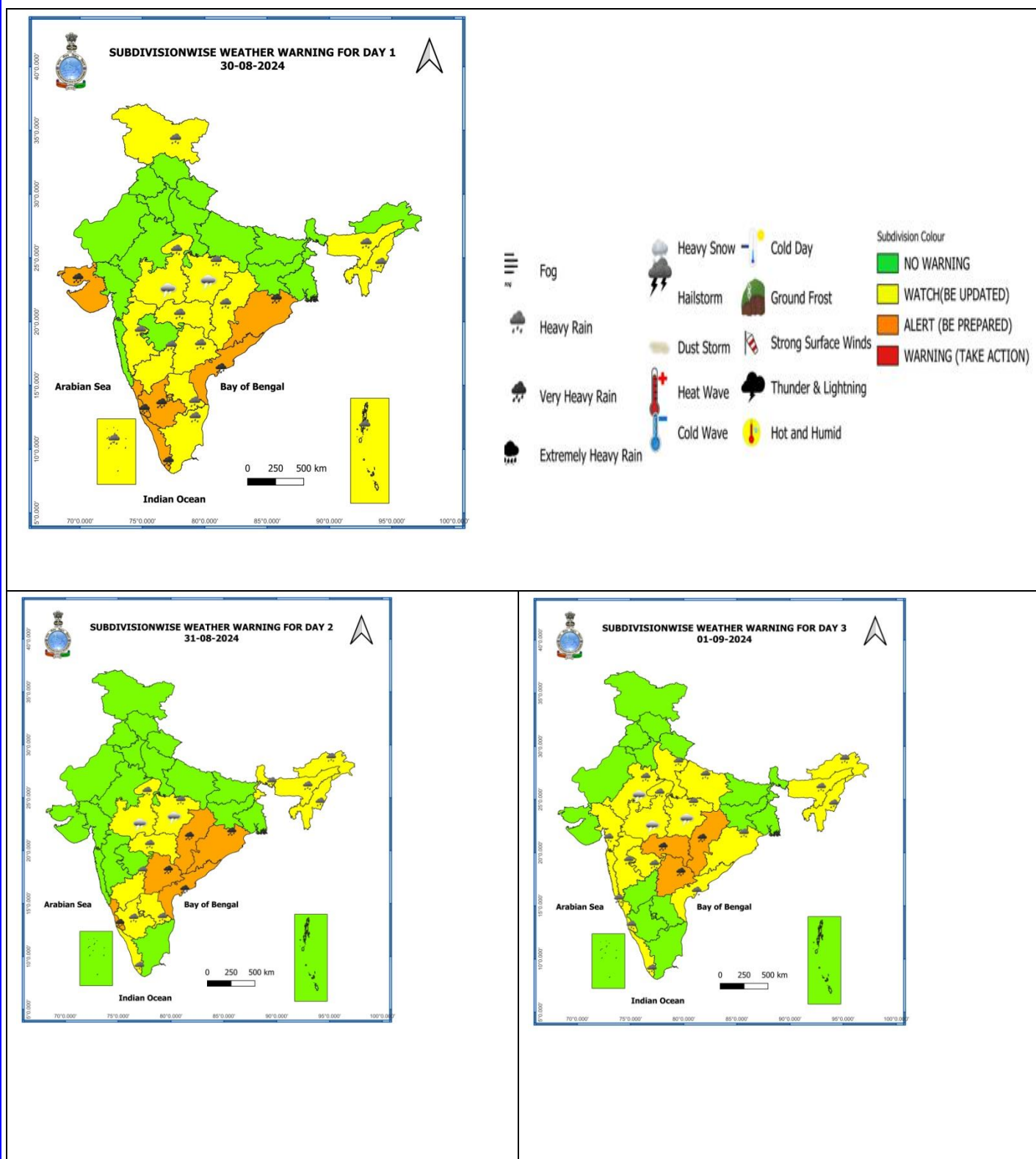
≥ 64 KT (≥118 KMPH)

**IMPACT OVER THE SEA**

MSW (knot/kmph)	Impact	Action
28-33 (52-61)	Very rough seas	Total suspension of fishing operations
34-49 (62-91)	High to very high seas	Total suspension of fishing operations
50-63 (92-117)	Very high seas	Total suspension of fishing operations
≥ 64 (≥118)	Phenomenal	Total suspension of fishing operations

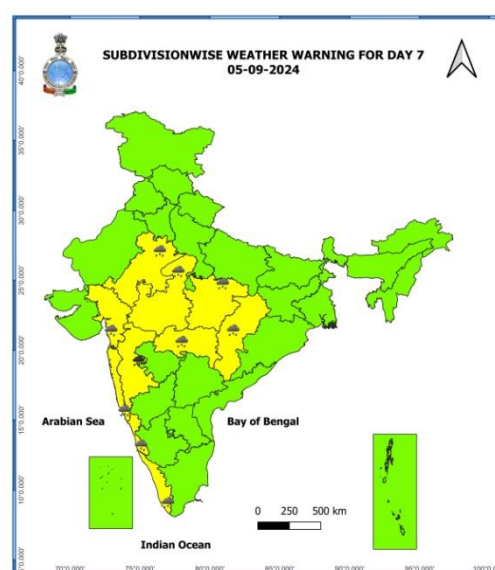
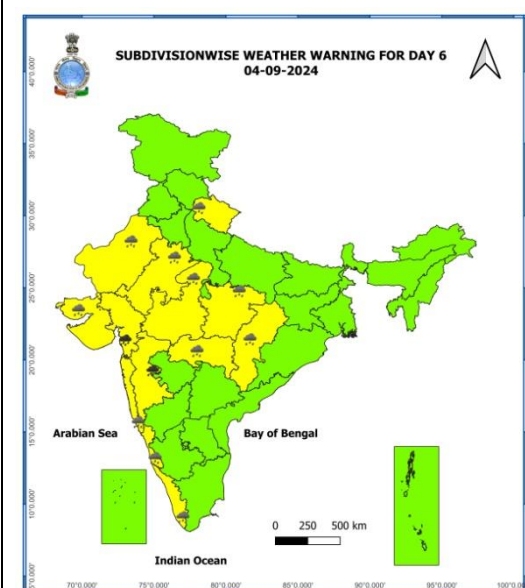
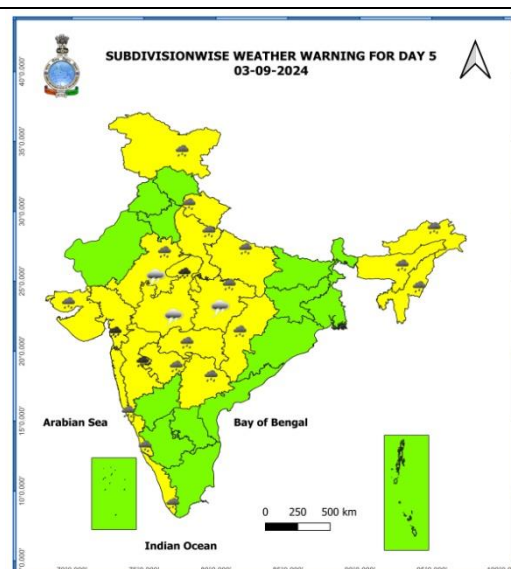
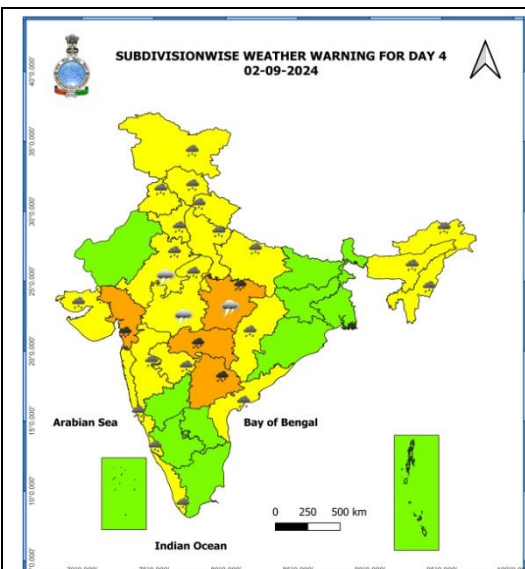
Contact: Cyclone Warning Division, Office of the Director General of Meteorology, India  
Meteorological Department, Ministry of Earth Sciences, E-mail: cyclonewarningdivision@gmail.com,  
Website: [rsmcnewdelhi.imd.gov.in](http://rsmcnewdelhi.imd.gov.in), Spatial rainfall distribution: Isolated: <25%, A few: 26-50%, Many:  
51-75%, Most: 76-100%, Rainfall amount (mm): Heavy rain: 64.5 – 115.5, Very heavy rain: 115.6 –  
204.4, Extremely heavy rain: 204.5 or more.

## Weather Warning Graphics



**Contact:** Cyclone Warning Division, Office of the Director General of Meteorology, India  
**Meteorological Department, Ministry of Earth Sciences, E-mail:** cyclonewarningdivision@gmail.com,  
**Website:** [rsmcnewdelhi.imd.gov.in](http://rsmcnewdelhi.imd.gov.in). **Spatial rainfall distribution:** Isolated: <25%, A few: 26-50%, Many: 51-75%, Most: 76-100%, **Rainfall amount (mm):** Heavy rain: 64.5 – 115.5, Very heavy rain: 115.6 – 204.4, Extremely heavy rain: 204.5 or more.

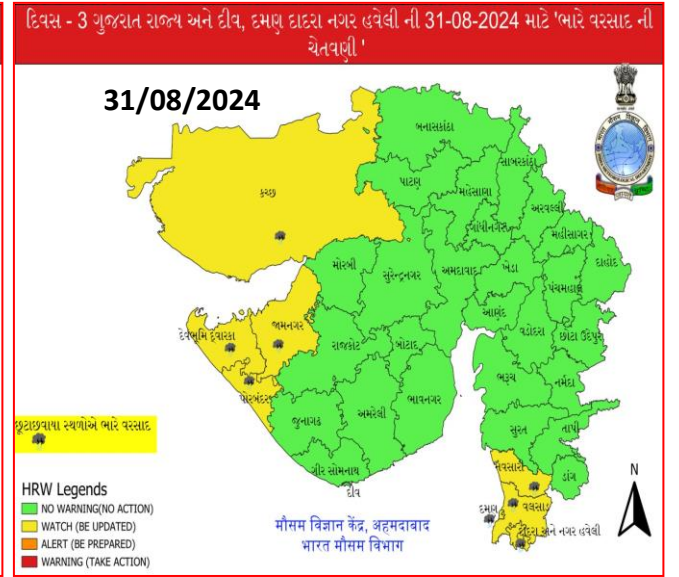
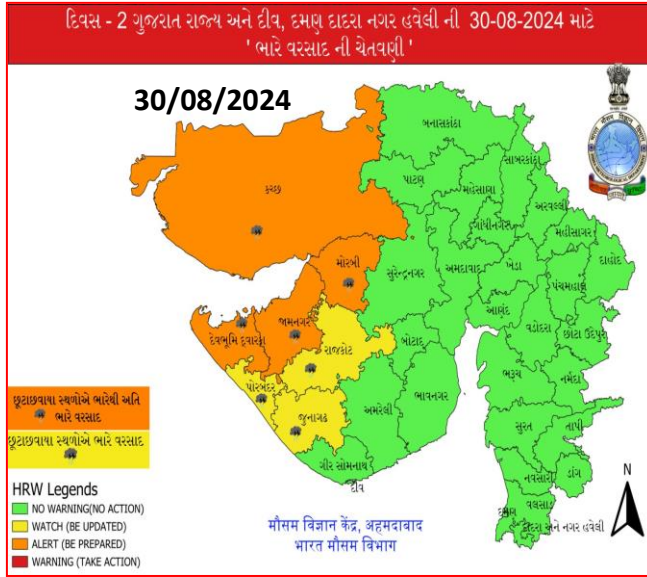




- Action may be taken based on **ORANGE** AND **RED** COLOUR warnings.
- Vulnerable regions likely urban and hilly areas action may be initiated for heavy rainfall warning.
- As the lead period increases forecast accuracy decreases.

Contact: Cyclone Warning Division, Office of the Director General of Meteorology, India  
 Meteorological Department, Ministry of Earth Sciences, E-mail: [cyclonewarningdivision@gmail.com](mailto:cyclonewarningdivision@gmail.com),  
 Website: [rsmcnewdelhi.imd.gov.in](http://rsmcnewdelhi.imd.gov.in). Spatial rainfall distribution: Isolated: <25%, A few: 26-50%, Many: 51-75%, Most: 76-100%, Rainfall amount (mm): Heavy rain: 64.5 – 115.5, Very heavy rain: 115.6 – 204.4, Extremely heavy rain: 204.5 or more.

## District wise Warning Graphics Gujarat



Contact: Cyclone Warning Division, Office of the Director General of Meteorology, India  
Meteorological Department, Ministry of Earth Sciences, E-mail: [cyclonewarningdivision@gmail.com](mailto:cyclonewarningdivision@gmail.com),  
Website: [rsmcnewdelhi.imd.gov.in](http://rsmcnewdelhi.imd.gov.in), Spatial rainfall distribution: Isolated: <25%, A few: 26-50%, Many: 51-75%, Most: 76-100%, Rainfall amount (mm): Heavy rain: 64.5 – 115.5, Very heavy rain: 115.6 – 204.4, Extremely heavy rain: 204.5 or more.

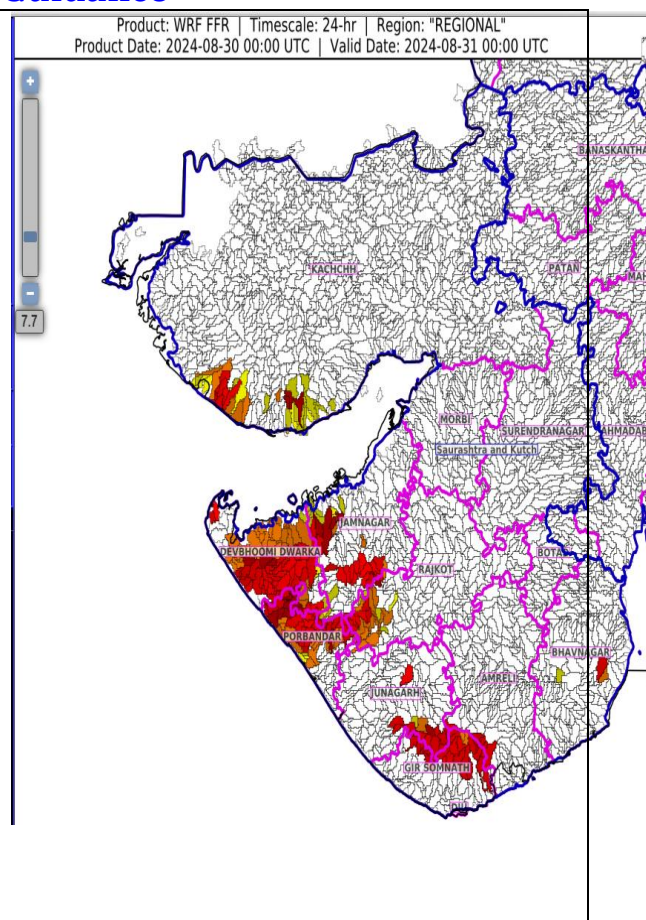
## Flash Flood Guidance

### 24 hours Outlook for the Flash Flood Risk (FFR) till 0530 IST of 31-08-2024 :

Low to Moderate flash flood risk likely over few watersheds & neighbourhoods of following Met Sub-divisions during next 24 hours.

Saurashtra & Kutch - Amreli, Bhavnagar, Devbhoomi Dwarka, Gir Somnath, Jamnagar, Junagarh, Porbandar, Rajkot and Kachchh districts.

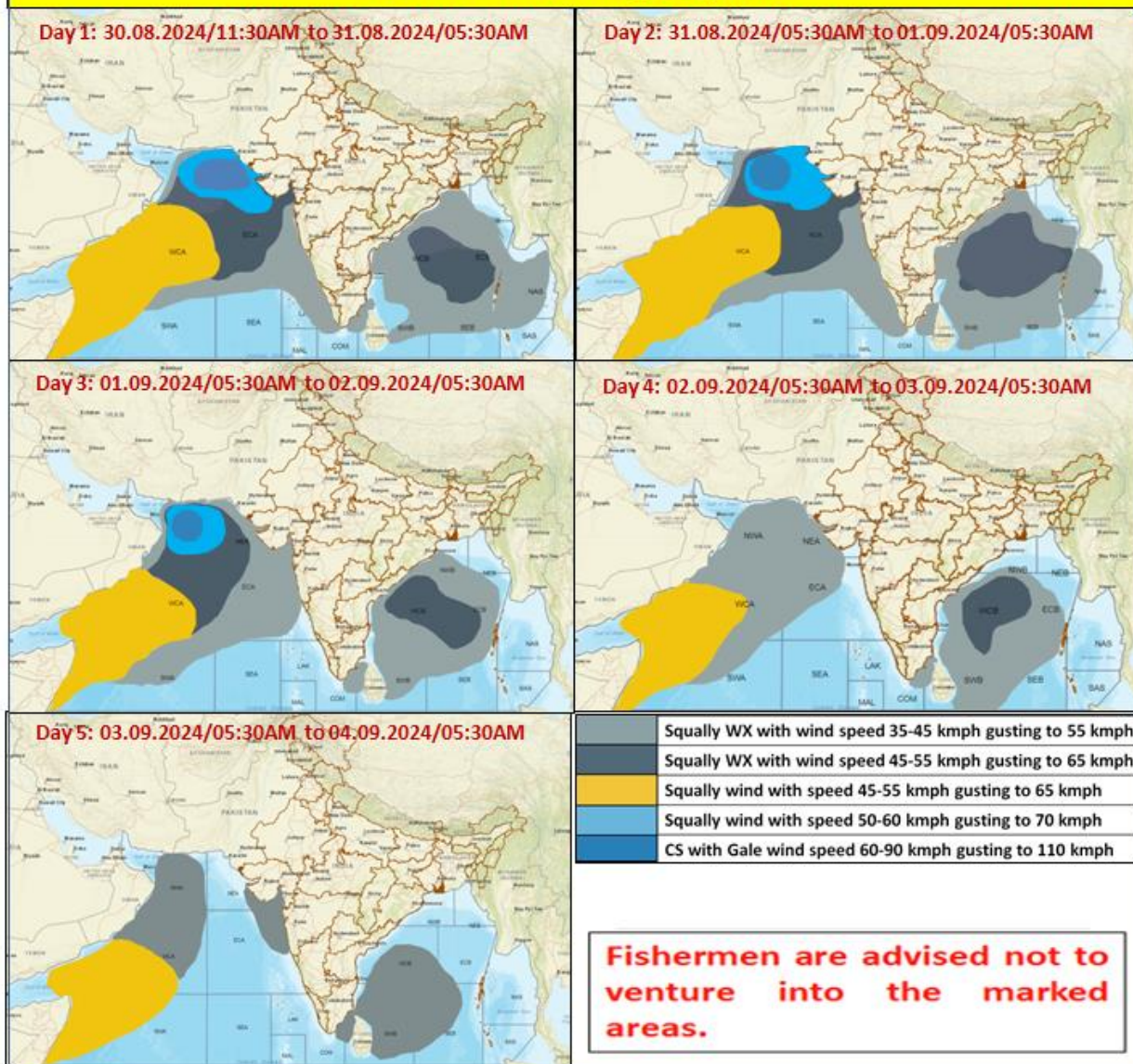
Surface runoff/ Inundation may occur at some fully saturated soils & low-lying areas over AoC as shown in map due to expected rainfall occurrence in next 24 hours.



Contact: Cyclone Warning Division, Office of the Director General of Meteorology, India  
Meteorological Department, Ministry of Earth Sciences, E-mail: [cyclonewarningdivision@gmail.com](mailto:cyclonewarningdivision@gmail.com),  
Website: [rsmcnewdelhi.imd.gov.in](http://rsmcnewdelhi.imd.gov.in). Spatial rainfall distribution: Isolated: <25%, A few: 26-50%, Many: 51-75%, Most: 76-100%, Rainfall amount (mm): Heavy rain: 64.5 – 115.5, Very heavy rain: 115.6 – 204.4, Extremely heavy rain: 204.5 or more.



## Fishermen Warning Graphics



Contact: Cyclone Warning Division, Office of the Director General of Meteorology, India  
 Meteorological Department, Ministry of Earth Sciences, E-mail: cyclonewarningdivision@gmail.com,  
 Website: [rsmcnewdelhi.imd.gov.in](http://rsmcnewdelhi.imd.gov.in), Spatial rainfall distribution: Isolated: <25%, A few: 26-50%, Many: 51-75%, Most: 76-100%, Rainfall amount (mm): Heavy rain: 64.5 – 115.5, Very heavy rain: 115.6 – 204.4, Extremely heavy rain: 204.5 or more.

## **ANNEXURE –II**

**Significant Rainfall recorded during past 24 hours till 0830 hours IST of today 29.08.2024 (in cm):**

### **1. Gujarat**

Mandvi(Kutch) 39;Mundra (Kutch) 22; Okha (Devbhoomi Dwarka) 17; Abdasa (Kutch) 16; Naliya (Kutch) 16;Dwarka (Devbhoomi Dwarka) 8; Anjar (Kutch) 8; Gandhidham (Kutch) 7.

### **2. Coastal Andhra Pradesh & Yanam**

Kalingapatnam (Srikakulam) 8.

**Contact: Cyclone Warning Division, Office of the Director General of Meteorology, India Meteorological Department, Ministry of Earth Sciences, E-mail:cyclonewarningdivision@gmail.com, Website: [rsmcnewdelhi.imd.gov.in](http://rsmcnewdelhi.imd.gov.in). Spatial rainfall distribution: Isolated: <25%, A few: 26-50%, Many: 51-75%, Most: 76-100%, Rainfall amount (mm): Heavy rain: 64.5 – 115.5, Very heavy rain: 115.6 – 204.4, Extremely heavy rain: 204.5 or more.**