



**Government of India  
Ministry of Earth Sciences  
India Meteorological Department**



**Press Release**

**Date: 1<sup>st</sup> September, 2024**

**Time of Issue: 1345 hours IST**

**Subject: (i) Depression over South Odisha and adjoining South Chhattisgarh & north Andhra Pradesh likely to cause extremely heavy rainfall over Telangana, Vidarbha & Marathwada and very heavy falls over Coastal Andhra Pradesh, south Chhattisgarh, Rayalaseema, Madhya Maharashtra, West Madhya & North Interior Karnataka Pradesh during next 24 hours.**

**(ii) The Cyclonic Storm “ASNA” has moved away from Indian coast and lies over Northwest Arabian Sea.**

**Realised weather during past 24 hours till 0830 hours IST of today (Annexure I)**

**Exceptionally heavy rainfall (in cm) occurred** at isolated places over **Telangana:** Mahabubabad (dist Mahabubabad) 37,

**Heavy to very heavy rainfall with isolated extremely heavy falls** at a few places over Coastal Andhra Pradesh & Yanam; **Heavy to very heavy rainfall** at isolated places over Vidarbha, Sub-Himalayan West Bengal & Sikkim, Assam & Meghalaya, Marathwada & Odisha; **Heavy rainfall** at isolated places over Rayalaseema, Konkan & Goa, Chhattisgarh, Nagaland, Manipur, Mizoram & Tripura, Madhya Pradesh, Rajasthan, Coastal Karnataka, North Interior Karnataka.

**Weather Systems:**

- ✓ The Cyclonic Storm “ASNA” (pronounced as As-Na) over northwest Arabian Sea moved west-southwestwards with a speed of 13 kmph during past 6 hours and lay centered at 0830 hours IST of today, the 01st September, 2024 over the same region near latitude 23.0°N and longitude 62.3°E, 670 km west of Naliya (Gujarat), 540 km west-southwest of Karachi (Pakistan), 280 km south-southwest of Pasni (Pakistan) and 420 km east of Muscat (Oman). It is likely to move southwestwards over northwest Arabian Sea and weaken gradually into a deep depression by evening of today, the 1st September and into a depression by morning of tomorrow, the 2nd September over the same region.
- ✓ The depression over south Odisha and adjoining areas of north Andhra Pradesh & South Chhattisgarh moved west-northwestwards with a speed of 20 Kmph during the past 6 hours and lay centered at 0830 hours IST of today, the 01st September, 2024 over South Odisha and adjoining South Chhattisgarh & north Andhra Pradesh near latitude 18.7°N and longitude 82.4°E, about 60 km southeast of Jagdalpur (Chhattisgarh), 70 km northeast of Malkangiri (Odisha), 150 km northwest of Visakhapatnam (Andhra Pradesh), 190 km west-northwest of Kalingapatnam (Andhra Pradesh) and 310 km east of Ramagundam (Telangana). It is likely to move west-northwestwards across South Odisha, South Chhattisgarh & Vidarbha and weaken into a Well Marked Low Pressure Area during next 24 hours ([Annexure II](#))
- ✓ The western end of monsoon trough at mean sea level is near its normal position and its eastern end is south of its normal position. It is likely to continue so for next 24 hours.
- ✓ A shear zone runs roughly along 18°N over north Peninsular India in middle tropospheric levels.

## Forecast & Warnings (upto 7 days) (Annexure III & IV):

### ❖ South Peninsular India:

- ✓ Fairly widespread to widespread light/moderate rainfall very likely over Coastal Karnataka, Kerala & Mahe, Lakshadweep; Scattered to Fairly widespread light/moderate rainfall over Coastal Andhra Pradesh & Yanam, Telangana, Rayalaseema and Interior Karnataka; isolated to scattered rainfall over Tamil Nadu, Puducherry & Karaikal during the week.
- ✓ **Isolated extremely heavy rainfall** very likely over Telangana on 01<sup>st</sup> September;
- ✓ Isolated **very heavy rainfall** very likely over Coastal Andhra Pradesh & Yanam during 01<sup>st</sup> -05<sup>th</sup>, Rayalaseema, Coastal Karnataka, North Interior Karnataka on 01<sup>st</sup> September.
- ✓ Isolated **heavy rainfall** very likely over Coastal Andhra Pradesh & Yanam during 01<sup>st</sup> -05<sup>th</sup>; Telangana, Coastal Karnataka, North Interior Karnataka on 01<sup>st</sup> & 02<sup>nd</sup>; Rayalaseema, South Interior Karnataka on 01<sup>st</sup>; Kerala & Mahe during 01<sup>st</sup> -04<sup>th</sup> September.

### ❖ West & Central India:

- ✓ Fairly widespread to widespread light/moderate rainfall very likely over West & Central India during the week.
- ✓ Isolated **extremely heavy rainfall** very likely over Marathwada on 01<sup>st</sup> and over Vidarbha on 01<sup>st</sup> & 02<sup>nd</sup> September.
- ✓ Isolated **very heavy rainfall** also very likely over Gujarat Region on 02<sup>nd</sup> & 03<sup>rd</sup>; Saurashtra & Kutch on 03<sup>rd</sup>; Madhya Maharashtra on 01<sup>st</sup>; Vidarbha on 01<sup>st</sup> & 02<sup>nd</sup>; Marathwada on 01<sup>st</sup> & 02<sup>nd</sup>; West Madhya Pradesh on 01<sup>st</sup> & 02<sup>nd</sup> & Chhattisgarh on 01<sup>st</sup> September.
- ✓ Isolated **heavy rainfall** very likely over Konkan & Goa during next 7 days; Madhya Maharashtra during 01<sup>st</sup> -07<sup>th</sup>; Gujarat Region during 02<sup>nd</sup> - 05<sup>th</sup>; Saurashtra & Kutch during 01<sup>st</sup> - 04<sup>th</sup>; West Madhya Pradesh during 01<sup>st</sup> -06<sup>th</sup>; East Madhya Pradesh on 01<sup>st</sup> & 02<sup>nd</sup>; Marathwada on 01<sup>st</sup> & 02<sup>nd</sup>; Vidarbha during 01<sup>st</sup> - 03<sup>rd</sup>; Chhattisgarh on 01<sup>st</sup>, 04<sup>th</sup> & 05<sup>th</sup> September.

### ❖ East & Northeast India

- ✓ Fairly widespread to widespread light/moderate rainfall very likely over Northeast India, Andaman & Nicobar Islands, Sub-Himalayan West Bengal & Sikkim; Scattered to Fairly widespread light/moderate rainfall very likely over Gangetic West Bengal, Bihar, Jharkhand & Odisha during the week.
- ✓ Isolated **very heavy rainfall** very likely over Assam & Meghalaya on 02<sup>nd</sup> August.
- ✓ Isolated **heavy rainfall** very likely over Nagaland, Manipur, Mizoram & Tripura during next 7 days; Arunachal Pradesh during 01<sup>st</sup> -05<sup>th</sup>; Assam & Meghalaya during 01<sup>st</sup> - 05<sup>th</sup>; Andaman & Nicobar Islands during 02<sup>nd</sup> -04<sup>th</sup>; Sub-Himalayan West Bengal & Sikkim on 04<sup>th</sup>; Bihar on 01<sup>st</sup>; Odisha on 01<sup>st</sup> & 05<sup>th</sup> September.

### ❖ Northwest India

- ✓ Scattered to Fairly widespread light/moderate rainfall very likely over Jammu-Kashmir-Ladakh-Gilgit-Baltistan-Muzaffarabad, Himachal Pradesh, Uttarakhand, Uttar Pradesh, Rajasthan; isolated to scattered rainfall over Punjab & Haryana-Chandigarh-Delhi during the week.
- ✓ Isolated **heavy rainfall** very likely over East Rajasthan during next 7 days; Himachal Pradesh on 03<sup>rd</sup>, Uttarakhand during 01<sup>st</sup> -04<sup>th</sup>; West Uttar Pradesh on 03<sup>rd</sup> & 04<sup>th</sup>; East Uttar Pradesh & West Rajasthan on 04<sup>th</sup> & 05<sup>th</sup> September.

## **Warnings associated with Cyclonic Storm “ASNA” and Depression over South Odisha & neighbourhood:**

### **(i) Wind warning:**

- ✓ Squally wind speed reaching 35-45 kmph gusting to 55 kmph is likely to prevail along & off Pakistan during next 12 hours.
- ✓ Squally wind speed reaching 35-45 kmph gusting to 55 kmph is likely to prevail over central parts of north Arabian Sea during next 12 hours and decrease thereafter.
- ✓ Gale wind speed reaching 65-75 kmph gusting to 85 kmph prevailing are over northwest Arabian Sea. It would gradually decrease becoming squally wind speed reaching 50-60 kmph gusting to 70 kmph by evening of 1<sup>st</sup> September and improve thereafter.
- ✓ Squally wind speed reaching 45-55 kmph gusting to 65 kmph is likely to prevail over central Arabian Sea till 2<sup>nd</sup> September morning and improve gradually thereafter.
- ✓ Strong wind speed reaching 30-40 kmph gusting to 50 kmph is likely along and off Gujarat, Maharashtra and Karnataka coast during next 24 hours.

### **(ii) Sea condition:**

- ✓ High sea conditions would prevail over northwest Arabian Sea till night of 1<sup>st</sup> September and would become Very Rough to Rough till morning of 2<sup>nd</sup> September and would improve thereafter.
- ✓ Squally weather with Rough to Moderate Sea conditions are likely along & off Pakistan coast during next 12 hours.
- ✓ Very rough to rough sea conditions are likely over central parts of north Arabian Sea during next 12 hours and would improve thereafter.
- ✓ Rough sea condition is likely over adjoining westcentral Arabian Sea till 2<sup>nd</sup> September.

### **(iii) Fishermen warning:**

Fishermen are advised not venture into

- ✓ Northwest Arabian Sea till 2<sup>nd</sup> September
- ✓ North Arabian Sea and along & off Pakistan coasts till evening of 1<sup>st</sup> September.
- ✓ Adjoining westcentral Arabian Sea till 2<sup>nd</sup> September.

**For more details, kindly refer to National bulletin on:** <https://rsmcnewdelhi.imd.gov.in/>

**For more details, kindly refer:** [https://mausam.imd.gov.in/responsive/all\\_india\\_forecast\\_bulletin.php](https://mausam.imd.gov.in/responsive/all_india_forecast_bulletin.php)

**For District wise warnings refer:** <https://mausam.imd.gov.in/responsive/districtWiseWarningGIS.php>

**Significant Rainfall recorded during past 24 hours till 0830 hours IST of today 01.09.2024 (in cm):**

- ❖ **Telangana:** Mahabubabad (dist Mahabubabad) 37, Kodada (dist Suryapet) 35, Manuguru (dist B. Kothagudem) 32, Kusumanchi (dist Khammam) 32, Chilkur (dist Suryapet) 31, Mattampally (dist Suryapet) 30, Huzur Nagar (dist Suryapet) 30, Parvathagiri (dist Warangal) 29, Burgampadu (dist B. Kothagudem) 29, Madhira (dist Khammam) 28, Banswada (dist Kamareddy) 28, Kodakandla (dist Jangaon) 27, Dornakal (dist Mahabubabad) 26, Chinthakam (dist Khammam) 26, Tadwai Mlg (dist Mulugu) 26, Noothankal (dist Suryapet) 26, Gudurwrgl (dist Mahabubabad) 25, Palawancha (dist B. Kothagudem) 24, Bhadrachalam (dist B. Kothagudem) 23, Khammam(arg) (dist Khammam) 23, Aswapuram (dist B. Kothagudem) 22, Thollada (dist Khammam) 22, Sadasivanagar (dist Kamareddy) 21, Bonakal (dist Khammam) 21, Mothey (dist Suryapet) 20, Bhiknur (dist Kamareddy) 20, Chennaraopet (dist Warangal) 20, Jajireddigudem (dist Suryapet) 19, Konijerla (dist Khammam) 19, Suryapet (dist Suryapet) 19, Bayyaram (dist Mahabubabad) 18, Kamareddy (dist Kamareddy) 18, Garla (dist Mahabubabad) 17, Kothagudem (dist B. Kothagudem) 17, Wyra Kvk(agro) (dist Khammam) 17, Dhar Palle (dist Nizamabad) 16, Tadwai (dist Kamareddy) 16, Kothaguda (dist Mahabubabad) 16, Kalwakurthy (dist Nagarkurnool) 16, Govindaraopet (dist Mulugu) 15, Domakonda (dist Kamareddy) 15, Miryalaguda (dist Nalgonda) 15, Zaffergadh (dist Jangaon) 15, Sathupalle (dist Khammam) 15, Jammikunta (dist Karimnagar) 14, Vangoor (dist Nagarkurnool) 14, Tekulapalle (dist B. Kothagudem) 14, Devaruppal (dist Jangaon) 14, Achampeta (dist Nagarkurnool) 14, Devarakonda (dist Nalgonda) 14, Medak (dist Medak) 14, Yellandu (dist B. Kothagudem) 14, Thimmajipeta (dist Nagarkurnool) 13, Kollapur (dist Nagarkurnool) 13, Mustabad (dist Rajanna Sircilla) 9, Papannapet (dist Medak) 9, Midjil (dist Mahabubnagar) 9, Nanganur (dist Siddipet) 9, Mominpet (dist Vikarabad) 9, Maganoor (dist Narayanpet) 9, Velpur (dist Nizamabad) 9, Narmetta (dist Jangaon) 9, Atmakurwrgl (dist Hanumakonda) 9, Nawabpetmbn (dist Mahabubnagar) 9, Sultanabad (dist Peddapalle) 9, Nawabpet (dist Vikarabad) 9, Chigurumamidy (dist Karimnagar) 9, Tamsi (dist Adilabad) 9, Pebbair (dist Wanaparthy) 9, Nangnoor(arg) (dist Siddipet) 9, Bomraspet (dist Vikarabad) 9, Nidamanur (dist Nalgonda) 9, Doma (dist Vikarabad) 9, Narayanpet (dist Narayanpet) 9, Boath (dist Adilabad) 9, Gangadhara (dist Karimnagar) 9, Hathanoora (dist Sangareddy) 9, Bachhanpet (dist Jangaon) 9, Kothakota (dist Wanaparthy) 9, Jagadevpur (dist Siddipet) 9, Talamadugu (dist Adilabad) 8, Peddamandadi (dist Wanaparthy) 8, Jangaon (dist Jangaon) 8, Kondurg (dist Rangareddy) 8, Yadagirigutta (dist Y. Bhuvanagiri) 8, Veepangandla (dist Wanaparthy) 8, Julapalle (dist Peddapalle) 8, Atmakur Wnp (dist Wanaparthy) 8, Ramannapeta (dist Y. Bhuvanagiri) 8, Nallabelly (dist Warangal) 8, Bazarhathnoor (dist Adilabad) 8, Vicarabad (dist Vikarabad) 8, Pargi(arg) (dist Vikarabad) 8, Tandur(a) (dist Vikarabad) 8, Wargal (dist Siddipet) 8, Chegunta (dist Medak) 8, Atmakur M (dist Y. Bhuvanagiri) 8, Pedda\_adiserlapalle (dist Nalgonda) 8, Yacharam (dist Rangareddy) 8, Ghatkesar(a) (dist Rangareddy) 8, Kondapak (dist Siddipet) 8, Naga Reddipet (dist Kamareddy) 8, Maheswaram (dist Rangareddy) 8, Konaraopeta (dist Rajanna Sircilla) 8, Navipet (dist Nizamabad) 8, Wankdi (dist Kumaram Bheem) 8, Utnur (dist Adilabad) 8, Bhuvanagiri (dist Y. Bhuvanagiri) 7, Dindigul (dist M. Malkajgiri) 7, Narva (dist Narayanpet) 7, Asifabad (dist Kumaram Bheem) 7, Tandur (dist Vikarabad) 13, Huzurabad (dist Karimnagar) 13, Chandrugonda (dist B. Kothagudem) 13, Neredcherla (dist Suryapet) 13, Varni (dist Nizamabad) 13, Thimmapur (dist Karimnagar) 13, Shadnagar (dist Rangareddy) 13, Khammam Urban (dist Khammam) 13, Jadcherla (dist Mahabubnagar) 12, Kodangal (dist Vikarabad) 12, Kosgi (dist Narayanpet) 12, Yellandu(arg) (dist B. Kothagudem) 12, Kowdipalle (dist Medak) 12, Chandur (dist Nalgonda) 12, Bhoothpur (dist Mahabubnagar) 12, Gandeed (dist Mahabubnagar) 12, Khila Ghanpur (dist Wanaparthy) 12, Choppadandi (dist Karimnagar) 12, Karimnagar (dist Karimnagar) 12, Mulakalapalle (dist B. Kothagudem) 12, Alladurg (dist Medak) 11, Narsampet (dist Warangal) 11, Mahbubnagar (dist Mahabubnagar) 11, Nalgonda (dist Nalgonda) 11, Sangem (dist Warangal) 11, Khanapur (dist Warangal) 11, Maddur (dist Narayanpet) 11, Narsapur (dist Medak) 11, Hanwada (dist Mahabubnagar) 11, Lingampet (dist Kamareddy) 11, Damaragidda (dist Narayanpet) 11, Koilkonda (dist Mahabubnagar) 11, Julurpad (dist B. Kothagudem) 11, Elagaid (dist Peddapalle) 11, Pochampalle (dist Y. Bhuvanagiri) 11, Gandhari (dist Kamareddy) 11, Tekmal (dist Medak) 11, Yellareddypeta (dist Rajanna Sircilla) 11, Pinapaka (dist B. Kothagudem) 11, Regode (dist Medak) 10, Wanaparthy (dist Wanaparthy) 10, Enkuru (dist Khammam) 10, Aswaraopeta (dist B. Kothagudem) 10, Chandurthi (dist Rajanna Sircilla) 10, Palakurthi (dist Jangaon) 10, Shankarapatnam

(dist Karimnagar) 10, Bheemgal (dist Nizamabad) 10, Nagarjuna Sagar(arg) (dist Nalgonda) 10, Yellareddy (dist Kamareddy) 10, Chevella (dist Rangareddy) 10, Ibrahimpatnam (dist Rangareddy) 10, Ramayampet (dist Medak) 10, Gopalpet (dist Wanaparthy) 10, Choutuppal(arg) (dist Y. Bhuvanagiri) 10, Chinna Chinta Kunt (dist Mahabubnagar) 10, Jogipet (dist Sangareddy) 9, Pitlam (dist Kamareddy) 7, Peddemul (dist Vikarabad) 7, Bala Nagar (dist Mahabubnagar) 7, Peddapalle (dist Peddapalle) 7, Nagar Kurnool (dist Nagarkurnool) 7, Ghanpur (dist Jangaon) 7, Bejjanki (dist Siddipet) 7, Kagaznagar (dist Kumaram Bheem) 7, Daira(a) (dist Rangareddy) 7, Palem(a) (dist Nagarkurnool) 7, Addakal (dist Mahabubnagar) 7, Asifabad(arg) (dist Kumaram Bheem) 7, Mulug (dist Mulugu) 7, Raghunathpalle (dist Jangaon) 7, Esci\_gachibowli(a) (dist Rangareddy) 7, Saroornagar (dist Rangareddy) 7, Venkatapuram (dist Mulugu) 7, Kondapur (dist Sangareddy) 7, Sirsilla (dist Rajanna Sircilla) 7, Sangareddy (dist Sangareddy) 7, Mudhole (dist Nirmal) 7, Kukatpally Jntu(arg) (dist M. Malkajgiri) 7, Marriguda (dist Nalgonda) 7, Utkoor (dist Narayanpet) 7, Venkatapur (dist Mulugu) 7, Nirmal (dist Nirmal) 7, Sarangapurnrl (dist Nirmal) 7, Dubbak (dist Siddipet) 7, Kammar Palle (dist Nizamabad) 7, Kathlapur (dist Jagtial) 7,

- ❖ **Coastal Andhra Pradesh & Yanam:** Amaravati (dist Guntur) 26, Tiruvuru (dist Ntr District) 26, Guntur (dist Guntur) 23, Kukunoor (dist Eluru) 20, Atchampet (dist Palnadu) 19, Tenali (dist Guntur) 18, Mangalagiri(dist Guntur) 17, Nandigama (dist Ntr District) 17, Piduguralla (dist Palnadu) 17, Macherla (distPalnadu) 17, Velairpad (dist Eluru) 16, Nuzvid (dist Eluru) 14, Mundlamuru (dist Prakasam) 14, Kunavaram (dist Alluri Sitharamaraju) 14, Jangamaheswarapuram (dist Palnadu) 13, Bapatla(dist Bapatla) 13, Vijayawada(arg) (dist Ntr District) 13, Santhamaguluru (dist Bapatla) 12, Vararamachandrapur (dist Alluri Sitharamaraju) 12, Avanigada (dist Krishna) 11, Addanki (dist Bapatla) 11, Vijayawada A.p. (dist Ntr District) 11, Chintur (dist Alluri Sitharamaraju) 11, Karamchedu (dist Bapatla) 10, Kaikalur (dist Eluru) 9, Sattenapalle (dist Palnadu) 9, Repalle (dist Bapatla) 9, Anakapalle (dist Anakapalli) 8, Yelamanchili (dist Anakapalli) 8, Markapur (distPrakasam) 8, Chimakurthi (dist Prakasam) 8, Podili (dist Prakasam) 7, Ongole (dist Prakasam) 7, Gudivada (dist Krishna) 7,
- ❖ **Vidarbha:** Kalamb (dist Yeotmal) 12, Digras (dist Yeotmal) 11, Deoli (dist Wardha) 10,Mahagaon (dist Yeotmal) 10, Pandherikawara (dist Yeotmal) 9, Umerkhed (dist Yeotmal) 9,Babulgaon (dist Yeotmal) 9, Ralegaon (dist Yeotmal) 9, Yeotmal (aws) (dist Yeotmal) 9,Zarizamni (dist Yeotmal) 8, Pusad (dist Yeotmal) 7, Arni (dist Yeotmal) 7, Ghatanji (distYeotmal) 7, Maregaon (dist Yeotmal) 7, Wani (dist Yeotmal) 7, Yeotmal (dist Yeotmal) 7,
- ❖ **Sub-Himalayan West Bengal & Sikkim:** KUMRGRAM- 13, BAROBISHA- 12, BAGRAKOTE-9, SEVOKE-7, JHALLONG-7, NAGRAKATA-8, DIANA-10, MURTI-7, COOCHBEHAR-10, CHEPAN-9, GYALSING AAWS-8, YUKSOM- 11, GYALSING PTO-8
- ❖ **Assam & Meghalaya:** Khipur (dist Cachar) 13, Lakhipur Arg (dist Cachar) 12, Guwahati City Imd (distKamrup Metropolitan) 10, Guwahati City Aws (dist Kamrup Metropolitan) 7, Khanapara (distKamrup Metropolitan) 7, Beky Rly.bridge (dist Barpeta) 7, Shella (dist East Khasi Hills) 7,
- ❖ **Marathwada:** Kinwat (dist Nanded) 18, Himayatnagar (dist Nanded) 17, Mahur (dist Nanded) 11, Hadgaon (dist Nanded) 9, Bhokar (dist Nanded) 7, Umarga (dist Dharashiv) 7,
- ❖ **Chhattisgarh:** Dornapal (dist Sukma) 11, Konta (dist Sukma) 10,
- ❖ **Odisha:** Padia ( Malkangiri) 14,
- ❖ **Nagaland, Manipur, Mizoram & Tripura:** Mizoram University (AWS) (dist Aizawl) 10, Hrc Nagicherra Arg (dist West Tripura) 7,Aizwal (dist Aizawl) 7, Dharmanagar/ Panisagar (dist North Tripura) 7,
- ❖ **Tripura:** Panisagar 7, HRC\_ Nagicherra 7,
- ❖ **Konkan & Goa:** Sawantwadi (dist Sindhudurg) 8,
- ❖ **East Madhya Pradesh:** Harrai (dist Chindwara) 9, Kirnapur (dist Balaghat) 9,
- ❖ **West Madhya Pradesh:** Maksudangarh (dist Guna) 7,
- ❖ **East Rajasthan:** Sheoganj (dist Sirohi) 7,
- ❖ **West Rajasthan:** Sumerpur Sr (dist Pali) 8, Luni Sr (dist Jodhpur) 7,
- ❖ **Rayalaseema:** Nandikotkur (dist Nandyal) 9, Jupadu Bungalow (dist Nandyal) 9, Atmakur (dist Nandyal) 9, Pagidyala (dist Nandyal) 8,
- ❖ **Coastal Karnataka:** Panambur Obsy (dist Dakshina Kannada) 7,
- ❖ **North Interior Karnataka:** Sedam (dist Kalaburgi) 9, Kalaburgi Obsy (dist Kalaburgi) 8, Chittapur (dist Kalaburgi) 7,





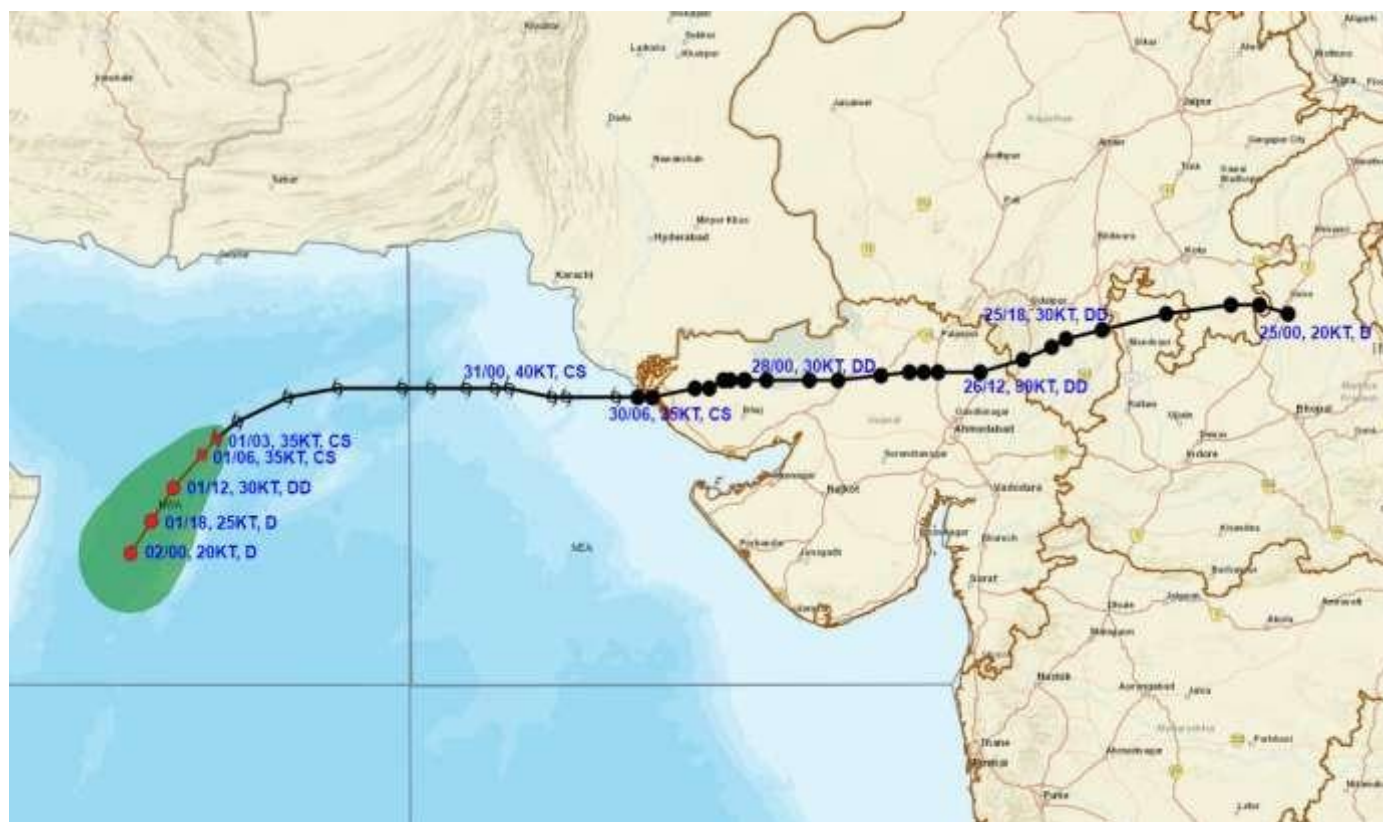
**OBSERVED AND FORECAST TRACK OF DEPRESSION OVER SOUTH ODISHA AND ADJOINING AREAS OF NORTH ANDHRA PRADESH AND SOUTH CHHATTISGARH BASED ON 0300 UTC (0830 IST) OF 1<sup>st</sup> SEPTEMBER, 2024.**



DATE/TIME IN UTC  
IST=UTC + 0530  
L: LOW PRESSURE AREA  
WML: WELL MARKED LOW PRESSURE AREA  
D: DEPRESSION (17-27 KT)  
DD: DEEP DEPRESSION (28-33 KT)  
CS: CYCLONIC STORM (34-47 KT)  
SCS: SEVERE CYCLONIC STORM (48-63KT)  
VSCS: VERY SEVERE CYCLONIC STORM (64-89 KT)  
ESCS: EXTREMELY SEVERE CYCLONIC STORM (90-119 KT)  
SuCS: SUPER CYCLONIC STORM ( $\geq 120$  KT)

- LESS THAN 34 KT
- 34-47 KT
- $\geq 48$  KT
- OBSERVED TRACK
- FORECAST TRACK
- CONE OF UNCERTAINTY

WCB: WESTCENTRAL BAY OF BENGAL  
ECB: EASTCENTRAL BAY OF BENGAL  
NWB:NORTHWEST BAY OF BENGAL



#### DATE/TIME IN UTC

IST=UTC + 0530

L: LOW PRESSURE AREA

WML: WELL MARKED LOW PRESSURE AREA

D: DEPRESSION (17-27 KT)

DD: DEEP DEPRESSION (28-33 KT)

CS: CYCLONIC STORM (34-47 KT)

SCS: SEVERE CYCLONIC STORM (48-63KT)

VSCS: VERY SEVERE CYCLONIC STORM (64-89 KT)

ESCS: EXTREMELY SEVERE CYCLONIC STORM (90-119 KT)

SuCS: SUPER CYCLONIC STORM ( $\geq 120$  KT)



LESS THAN 34 KT



34-47 KT



$\geq 48$  KT



OBSERVED TRACK



FORECAST TRACK

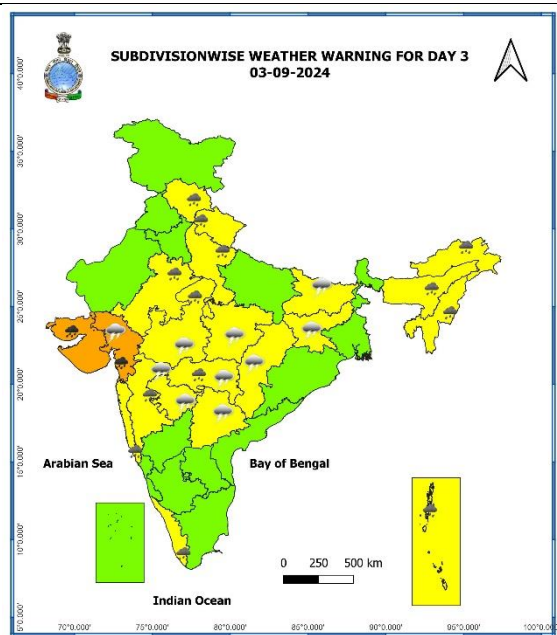
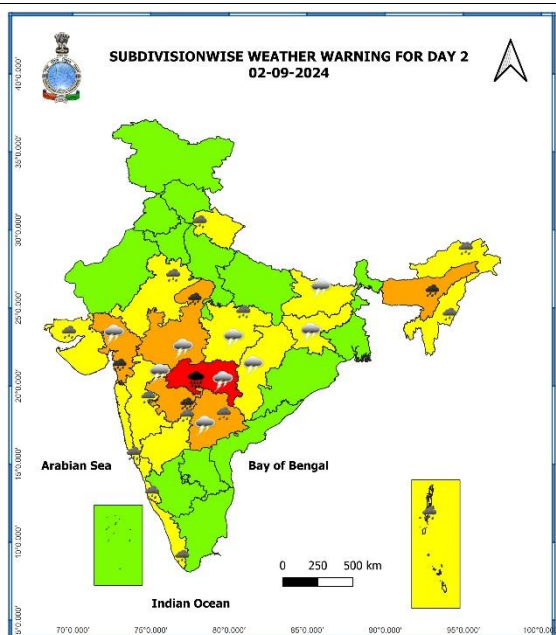
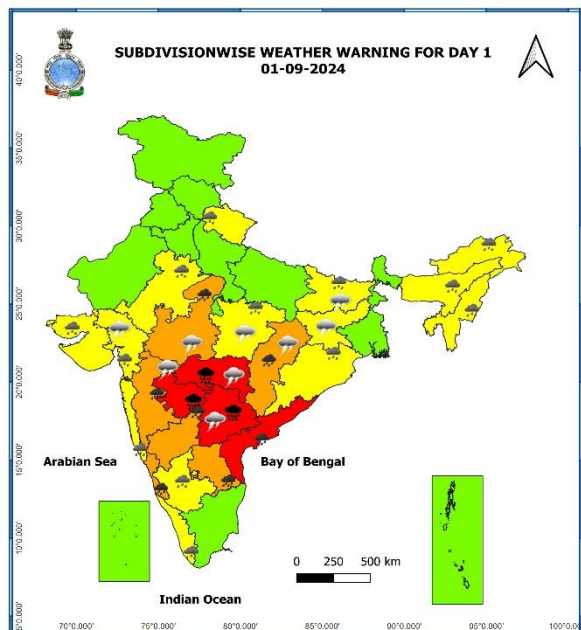


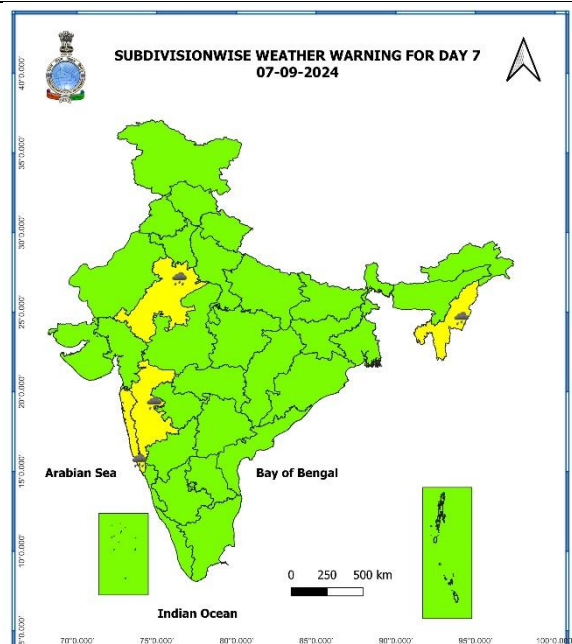
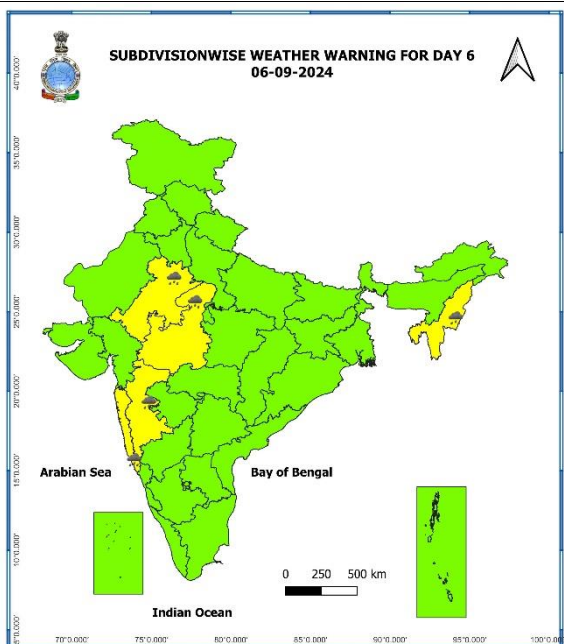
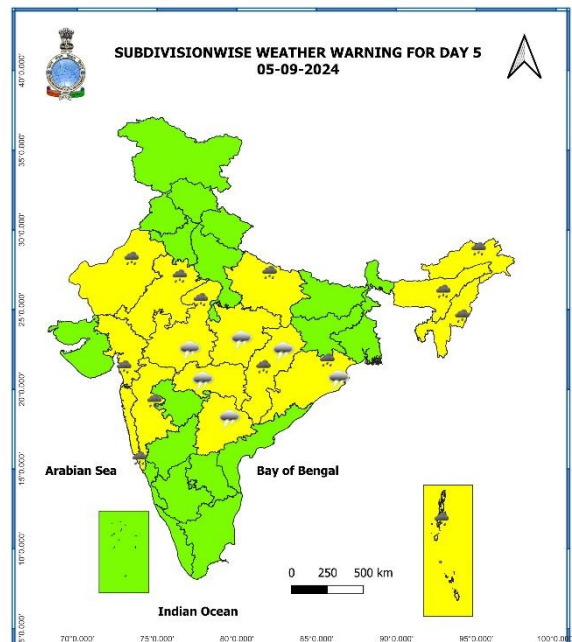
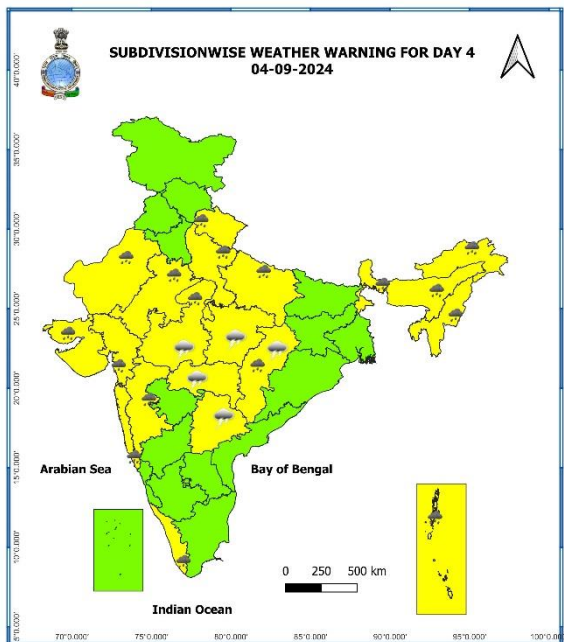
CONE OF UNCERTAINTY

7 Days Rainfall Forecast								
S. No.	Subdivision	01-Sep	02-Sep	03-Sep	04-Sep	05-Sep	06-Sep	07-Sep
		Day 1	Day 2	Day 3	Day 4	Day 5	Day 6	Day 7
1	ANDAMAN & NICOBAR ISLANDS	WS	WS	WS	WS	WS	WS	WS
2	ARUNACHAL PRADESH	FWS	FWS	FWS	FWS	FWS	SCT	SCT
3	ASSAM & MEGHALAYA	FWS	WS	WS	FWS	FWS	FWS	FWS
4	NAGALAND, MANIPUR, MIZORAM & TRIPURA	FWS	WS	WS	FWS	FWS	FWS	FWS
5	SUB-HIMALAYAN WEST BENGAL & SIKKIM	FWS	FWS	FWS	WS	WS	FWS	FWS
6	GANGETIC WEST BENGAL	SCT	SCT	SCT	SCT	FWS	FWS	FWS
7	ODISHA	FWS	SCT	SCT	SCT	FWS	FWS	SCT
8	JHARKHAND	SCT	SCT	SCT	SCT	FWS	FWS	SCT
9	BIHAR	SCT	SCT	SCT	SCT	SCT	SCT	SCT
10	EAST UTTAR PRADESH	SCT	SCT	SCT	FWS	FWS	SCT	SCT
11	WEST UTTAR PRADESH	SCT	FWS	FWS	FWS	FWS	SCT	SCT
12	UTTARAKHAND	SCT	FWS	FWS	FWS	FWS	FWS	FWS
13	HARYANA CHANDIGARH & DELHI	ISOL	SCT	SCT	SCT	ISOL	ISOL	ISOL
14	PUNJAB	ISOL	SCT	SCT	SCT	ISOL	ISOL	ISOL
15	HIMACHAL PRADESH	SCT	SCT	FWS	SCT	SCT	ISOL	ISOL
16	JAMMU & KASHMIR AND LADAKH	SCT	FWS	FWS	FWS	SCT	SCT	ISOL
17	WEST RAJASTHAN	ISOL	SCT	FWS	FWS	SCT	SCT	SCT
18	EAST RAJASTHAN	FWS	FWS	FWS	FWS	FWS	FWS	FWS
19	WEST MADHYA PRADESH	FWS	FWS	FWS	FWS	FWS	FWS	FWS
20	EAST MADHYA PRADESH	SCT	SCT	SCT	FWS	FWS	FWS	FWS
21	GUJARAT REGION	WS	WS	WS	WS	WS	WS	WS
22	SAURASHTRA & KUTCH	FWS	FWS	WS	WS	FWS	FWS	FWS
23	KONKAN & GOA	WS	WS	WS	WS	WS	WS	WS
24	MADHYA MAHARASHTRA	WS	WS	FWS	FWS	FWS	FWS	FWS
25	MARATHAWADA	WS	WS	FWS	SCT	SCT	SCT	SCT
26	VIDARBHA	WS	WS	WS	WS	WS	FWS	FWS
27	CHHATTISGARH	FWS	SCT	SCT	FWS	FWS	FWS	FWS
28	COASTAL ANDHRA PRADESH & YANAM	WS	FWS	FWS	SCT	SCT	SCT	SCT
29	TELANGANA	WS	FWS	SCT	SCT	SCT	SCT	SCT
30	RAYALASEEMA	WS	SCT	SCT	ISOL	ISOL	ISOL	ISOL
31	TAMILNADU PUDUCHERRY & KARAIKAL	ISOL	ISOL	ISOL	ISOL	ISOL	ISOL	ISOL
32	COASTAL KARNATAKA	WS	WS	WS	WS	WS	WS	WS
33	NORTH INTERIOR KARNATAKA	WS	FWS	SCT	SCT	SCT	SCT	SCT
34	SOUTH INTERIOR KARNATAKA	SCT	SCT	SCT	SCT	SCT	SCT	SCT
35	KERALA & MAHE	WS	WS	WS	FWS	FWS	WS	WS
36	LAKSHADWEEP	WS	WS	FWS	FWS	FWS	SCT	SCT

- As the lead period increases forecast accuracy decreases.







- Action may be taken based on ORANGE AND RED COLOUR warnings.
- Vulnerable regions likely urban and hilly areas action may be initiated for heavy rainfall warning.
- As the lead period increases forecast accuracy decreases.



### Fishermen Warning Graphics

**Day 1: 01.09.2024/08:30AM to 02.09.2024/05:30AM**



**Day 2: 02.09.2024/05:30AM to 03.09.2024/05:30AM**



**Day 3: 03.09.2024/05:30AM to 04.09.2024/05:30AM**



**Day 4: 04.09.2024/05:30AM to 05.09.2024/05:30AM**



**Day 5: 05.09.2024/05:30AM to 06.09.2024/05:30AM**



Squally WX with wind speed 35-45 kmph gusting to 55 kmph

Squally WX with wind speed 45-55 kmph gusting to 65 kmph

Squally wind with speed 45-55 kmph gusting to 65 kmph

Squally wind with speed 50-60 kmph gusting to 70 kmph

CS with Gale wind speed 60-90 kmph gusting to 110 kmph

**Fishermen are advised not to venture into the marked areas.**



## Impact due to

- **Heavy to very heavy with isolated extremely heavy rainfall** very likely over Marathwada, Telangana on 01<sup>st</sup> and Vidarbha on 01<sup>st</sup> & 02<sup>nd</sup> September.
- **Very heavy rainfall** at isolated over Chhattisgarh, Madhya Maharashtra, Coastal Andhra Pradesh & Yanam, Rayalaseema, Coastal Karnataka and North Interior Karnataka on 01<sup>st</sup>; Marathwada, Assam & Meghalaya on 02<sup>nd</sup>, Gujarat Region on 02<sup>nd</sup> & 03<sup>rd</sup>; Saurashtra & Kutch on 03<sup>rd</sup> September.
- **Moderate to high flash flood risk** likely over few watersheds & neighbourhoods of West Madhya Pradesh, Telangana, Vidarbha, Marathwada on 01<sup>st</sup> & 02<sup>nd</sup> September. **(ANNEXURE I)**

## Impact Expected

- ✓ Localized Flooding of roads, water logging in low lying areas and closure of underpasses mainly in urban areas of the above region.
- ✓ Occasional reduction in visibility due to heavy rainfall.
- ✓ Reduction of visibility over sea area due to sea spray induced by strong wind and heavy rainfall.
- ✓ Disruption of traffic in major cities due to water logging in roads leading to increased travel time.
- ✓ Minor damage to kutcha roads.
- ✓ Possibilities of damage to vulnerable structure.
- ✓ Localized Landslides/Mudslides/landslips/mud slips/land sinks/mud sinks.
- ✓ Damage to horticulture and standing crops in some areas due to inundation.
- ✓ It may lead to riverine flooding in some river catchments (for riverine flooding please visit Web page of CWC)

## Action Suggested

- ✓ Fishermen are advised not to venture into Northeast & adjoining Eastcentral Arabian Sea and along & off Gujarat & adjoining Pakistan and north Maharashtra Coasts till 30<sup>th</sup> August.
- ✓ Judicious regulation of offshore/onshore Operations
- ✓ Judicious regulation of surface transports including railways and roadways.
- ✓ Check for traffic congestion on your route before leaving for your destination.
- ✓ Follow any traffic advisories that are issued in this regard.
- ✓ Avoid going to areas that face the water logging problems often.
- ✓ Avoid staying in vulnerable structure.

## Agromet advisories for Heavy Rainfall likely over various parts of the country

- Drain out excess water from field crops and horticultural crops in North Eastern States, Odisha, Sub Himalayan West Bengal, Vidarbha, Chhattisgarh, Madhya Maharashtra, North Interior Karnataka, Andhra Pradesh and Telangana.
- Make provision for draining out excess water from standing crop fields and fruit orchards to avoid water stagnation in Konkan & Goa, West Madhya Pradesh, South Gujarat, Kerala, and Coastal Karnataka.
- Drain out excess water from maize, groundnut, ragi, vegetables, niger and banana in South **Odisha**; from rice, maize, sugarcane, red gram, cotton, groundnut, vegetables and horticultural crops in **Andhra Pradesh**; from rice, soybean, red gram, maize, cotton and Turmeric in **Telangana** to prevent water logging.
- Store the harvested produce of black gram and green gram at safer places in **Vidarbha, Marathwada** and *Ghat* areas of **Madhya Maharashtra**.
- Provide mechanical support to horticultural crops & staking to vegetables.

**Flash Flood Guidance:****24 hours Outlook for the Flash Flood Risk (FFR) till 1130 IST of 02-09-2024:**

Moderate to High flash flood risk likely over few watersheds & neighbourhoods of following Met Sub-divisions during next 24 hours.

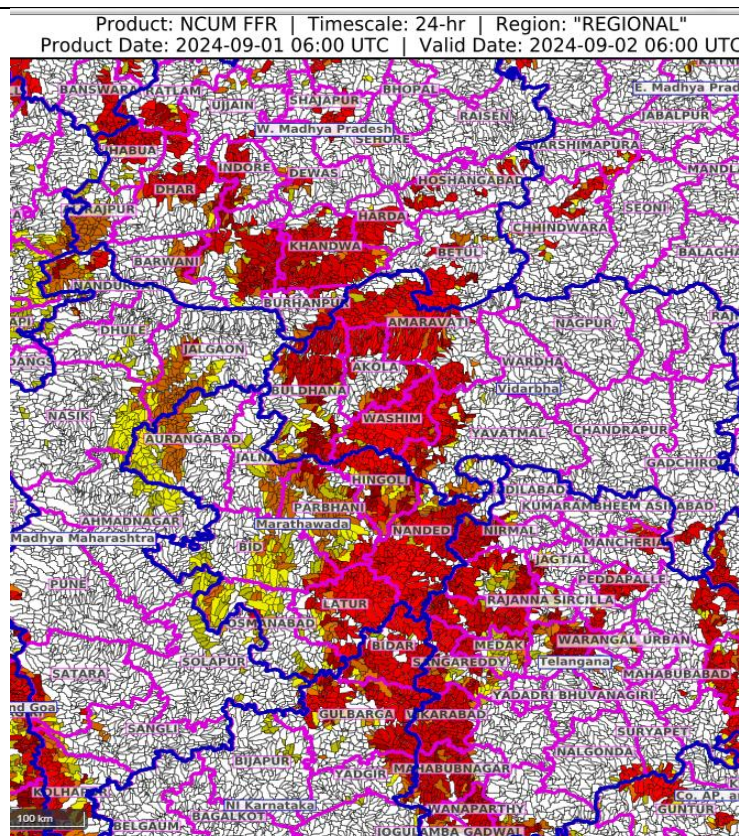
**Telangana** - Jagtial, Jogulamba Gadwal, Kamareddy, Karimnagar, Mahabubnagar, Medak, Nagarkurnool, Nirmal, Nizamabad, Peddapalle, Rajanna Sircilla, Sangareddy, Siddipet, Vikarabad, Wanaparthy and Warangal\_Urban districts.

**Vidarbha** - Akola, Amaravati, Buldhana, Washim and Yavatmal districts.

**West Madhya Pradesh** - Agar-Malwa, Barwani, Dewas, Dhar, Harda, Indore, Jhabua, Khandwa, Khargone, Rajgarh, Shajapur and Hoshangabad districts.

**Marathawada** - Aurangabad, Bid, Hingoli, Jalna, Latur, Nanded, Osmanabad and Parbhani districts.

Surface runoff/ Inundation may occur at some fully saturated soils & low-lying areas over AoC as shown in map due to expected rainfall occurrence in next 24 hours.

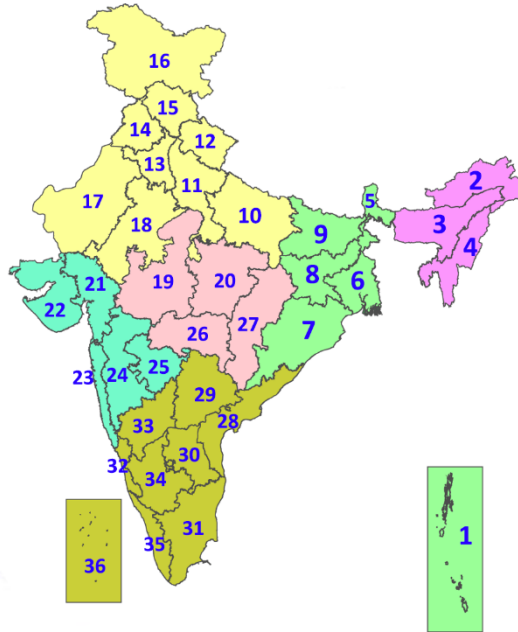
**Legends & abbreviations:**

- ❖ **Heavy Rain:** 64.5-115.5mm; **Very Heavy Rain:** 115.6-204.4mm; **Extremely Heavy Rain:** >204.4mm.
- ❖ **Obsy:** Observatory; **AWS:** Automatic Weather Station; **ARG:** Automatic Rain Gauge; **dist:** District; **NH:** National Highway; **KVK:** Krishi Vigyan Kendra; **DVC:** Damodar Valley Corporation; **PTO:** Part Time Office, **Aero:** Aerodrome, **IAF:** Indian Air Force.
- ❖ **Region wise classification of meteorological Sub-Divisions:**
  - **Northwest India:** Western Himalayan Region (Jammu-Kashmir-Ladakh-Gilgit-Baltistan-Muzaffarabad, Himachal Pradesh and Uttarakhand); Punjab, Haryana-Chandigarh-Delhi; West Uttar Pradesh, East Uttar Pradesh, West Rajasthan and East Rajasthan.
  - **Central India:** West Madhya Pradesh, East Madhya Pradesh, Vidarbha and Chhattisgarh.
  - **East India:** Bihar, Jharkhand, Sub-Himalayan West Bengal & Sikkim; Gangetic West Bengal, Odisha and Andaman & Nicobar Islands.
  - **Northeast India:** Arunachal Pradesh, Assam & Meghalaya and Nagaland, Manipur, Mizoram & Tripura.
  - **West India:** Gujarat Region, Saurashtra & Kutch, Konkan & Goa, Madhya Maharashtra and Marathawada.



## LEGENDS

1. अंडमान और निकोबार द्वीपसमूह
2. अरुणाचल प्रदेश
3. असम और मेघालय
4. नागालैंड, मणिपुर, मिजोरम और त्रिपुरा
5. उप-हिमालयी पश्चिम बंगाल और सिक्किम
6. गंगीय पश्चिम बंगाल
7. ओडिशा
8. झारखंड
9. बिहार
10. पूर्वी उत्तर प्रदेश
11. पश्चिम उत्तर प्रदेश
12. उत्तराखंड
13. हरियाणा, चंडीगढ़ और दिल्ली
14. पंजाब
15. हिमाचल प्रदेश
16. जम्मू और कश्मीर और लद्दाख
17. पश्चिम राजस्थान
18. पूर्वी राजस्थान
19. पश्चिम मध्य प्रदेश
20. पूर्वी मध्य प्रदेश
21. गुजरात
22. सौराष्ट्र
23. कोंकण और गोवा
24. मध्य महाराष्ट्र
25. मराठवाड़ा
26. विदर्भ
27. छत्तीसगढ़
28. तटीय आंध्र प्रदेश और यनम
29. तेलंगाना
30. रायलसीमा
31. तमिलनाडु, पुडुचेरी और कराईकल
32. तटीय कर्नाटक
33. आंतरिक उत्तरी कर्नाटक
34. आंतरिक दक्षिणी कर्नाटक
35. केरल और माहे
36. लक्षद्वीप



1. Andaman & Nicobar Islands
2. Arunachal Pradesh
3. Assam & Meghalaya
4. Nagaland, Manipur, Mizoram & Tripura
5. Sub-Himalayan West Bengal & Sikkim
6. Gangetic West Bengal
7. Odisha
8. Jharkhand
9. Bihar
10. East Uttar Pradesh
11. West Uttar Pradesh
12. Uttarakhand
13. Haryana, Chandigarh & Delhi
14. Punjab
15. Himachal Pradesh
16. Jammu & Kashmir and Ladakh
17. West Rajasthan
18. East Rajasthan
19. West Madhya Pradesh
20. East Madhya Pradesh
21. Gujarat
22. Saurashtra
23. Konkan & Goa
24. Madhya Maharashtra
25. Marathwada
26. Vidarbha
27. Chhattisgarh
28. Coastal Andhra Pradesh & Yanam
29. Telangana
30. Rayalaseema
31. Tamilnadu, Puducherry & Karaikal
32. Coastal Karnataka
33. North Interior Karnataka
34. South Interior Karnataka
35. Kerala & Mahe
36. Lakshadweep

## SPATIAL DISTRIBUTION (% of Stations reporting)

% Stations	Category	% Stations	Category
76-100	Widespread (WS/Most Places)	26-50	Scattered (SCT/A Few Places)
51-75	Fairly Widespread (FWS/Many Places)	1-25	Isolated (ISOL)



Fog



Heavy Snow



Cold Wave



Heavy Rain



Dust Storm



Cold Day



Very Heavy Rain



Heat Wave



Ground Frost



Extremely Heavy Rain



Warm Night



Thunder & Lightning



Hot Day



Hailstorm



Hot & Humid



Dust Raising Winds



Strong Surface Winds

### COLOUR CODED WARNING

No Warning (No Action)

Watch (Be Aware)

Alert (Be Prepared To Take Action)

Warning (Take Action)

### Probabilistic Forecast

Terms	Probability of Occurrence (%)
Unlikely	< 25
Likely	25 - 50
Very Likely	50 - 75
Most Likely	> 75

\* Red colour warning does not mean "Red Alert", Red colour warning means "Take Action".  
Forecast and Warning for any day is valid from 0830 hours IST of day till 0830 hours IST of next day.  
For more details, kindly visit <https://mausam.imd.gov.in> or contact: 011-2434-4599  
(Service to the Nation since 1875)

## DEFINITION/CRITERIA

### Rain/ Snow \*

Heavy: 64.5 to 115.5 mm/cm \*  
Very Heavy: 115.6 to 204.4 mm/cm \*  
Extremely Heavy: > 204.4 mm/cm \*

### Heat Wave

When maximum temperature of a station reaches  $\geq 40^{\circ}\text{C}$  for plains and  $\geq 30^{\circ}\text{C}$  for hilly regions  
(a) Based on Departure from normal

Heat Wave: Maximum Temperature Departure from normal  $4.5^{\circ}\text{C}$  to  $6.4^{\circ}\text{C}$ .

Severe Heat Wave: Maximum Temperature Departure from normal  $\geq 6.5^{\circ}\text{C}$

(b). Based on Actual maximum temperature

Heat Wave: When actual maximum temperature  $\geq 45^{\circ}\text{C}$ .

Severe Heat Wave: When actual maximum temperature  $\geq 47^{\circ}\text{C}$

(c). Criteria for heat wave for coastal stations

When maximum temperature departure is  $> 4.5^{\circ}\text{C}$  from normal. Heat Wave may be described provided maximum temperature  $\geq 37^{\circ}\text{C}$

### Warm Night

When maximum temperature remains  $40^{\circ}\text{C}$

Warm Night: When minimum temperature departure  $4.5^{\circ}\text{C}$  to  $6.4^{\circ}\text{C}$ .

Severe Warm Night: When minimum temperature departure  $> 6.4^{\circ}\text{C}$ .

### Cold Wave

When minimum temperature of a station  $\leq 10^{\circ}\text{C}$  for plains and  $\leq 0^{\circ}\text{C}$  for hilly regions.  
(a). Based on departure

Cold Wave: Minimum Temperature Departure from normal  $-4.5^{\circ}\text{C}$  to  $-6.4^{\circ}\text{C}$ .

Severe Cold Wave: Minimum Temperature Departure from normal  $\leq -6.5^{\circ}\text{C}$

(b) Based on actual Minimum Temperature (for Plains only)

Cold Wave : When Minimum Temperature is  $\leq 4.0^{\circ}\text{C}$

Severe Cold Wave: When Minimum Temperature is  $\leq 2.0^{\circ}\text{C}$

(c) For Coastal Stations

When Minimum Temperature departure is  $\leq -4.5^{\circ}\text{C}$  & actual Minimum Temperature is  $\leq 15^{\circ}\text{C}$

### Cold Day

When minimum temperature of a station  $\leq 10^{\circ}\text{C}$  for plains and  $\leq 0^{\circ}\text{C}$  for hilly regions  
Based on departure

Cold Day: Maximum Temperature Departure from normal  $-4.5^{\circ}\text{C}$  to  $-6.4^{\circ}\text{C}$ .

Severe Cold Day: Maximum Temperature Departure from normal  $\leq -6.5^{\circ}\text{C}$

### Fog

Phenomenon of small droplets suspended in air and the horizontal visibility  $< 1\text{km}$

Moderate Fog: When the visibility between 500-200 metres

Dense Fog: when the visibility between 50- 200 metres

Very Dense Fog: when the visibility  $< 50$  metres

### Thunderstorm

Sudden electrical discharges manifested by a flash of light (Lightning) and a sharp rumbling sound (thunder)

### Dust/Sand Storm

An ensemble of particles of dust or sand energetically lifted to great heights by a strong and turbulent wind.

### Frost

Ice deposits on ground

Air temperature  $\leq 4^{\circ}\text{C}$  ( over Plains)

### Squall

A strong wind that rises suddenly, lasts for atleast 1 minute.

Moderate: Wind speed 52-61 kmph

Severe: Wind speed 62-87 kmph

Very Severe: Wind speed  $> 87$  kmph

### Sea State

Effect of various waves in the sea over specific area

Rough to very rough: Wind speed 41-62 kmph (22-33 knots) & Wave height 2.5-6 metre

High to very high: Wind speed 63-117 kmph (34-63 knots) & Wave height 6-14 metre

Phenomenal: Wind speed  $> 117$  kmph ( $> 63$  knots) & Wave height  $> 14$  metre

### Cyclone

Cyclonic Storm: Wind speed 62-87 kmph (34-47 knots)

Severe Cyclonic Storm: Wind speed 88-117 kmph (48-63 knots)

Very Severe Cyclonic Storm: Wind speed 118-165 kmph (64 - 89 knots)

Extremely Severe Cyclonic Storm: Wind speed 166-220 kmph (90 -119 knots)

Super Cyclone Strom: Wind speed  $> 220$  kmph ( $> 119$  knots)

\* Red colour warning does not mean "Red Alert", Red colour warning means "Take Action".  
Forecast and Warning for any day is valid from 0830 hours IST of day till 0830 hours IST of next day.  
For more details, kindly visit <https://mausam.imd.gov.in> or contact: 011-2434-4599  
(Service to the Nation since 1875)