



Government of India  
Ministry of Earth Sciences  
India Meteorological Department



Press Release

Date: 14<sup>th</sup> October, 2024

Time of Issue: 1330 hours IST

**Subject:(i) Northeast Monsoon rainfall activity is like to commence over south eastern peninsular India around 15-16<sup>th</sup> October.**

**(ii) In association with the low pressure area over southeast Bay of Bengal, isolated very heavy to extremely heavy rainfall likely over Tamil Nadu, Kerala and South Interior Karnataka during 14<sup>th</sup> to 17<sup>th</sup> and over Coastal Andhra Pradesh and Rayalaseema during 14<sup>th</sup> to 16<sup>th</sup> October, 2024.**

**Realised weather during past 24 hours till 0830 hours IST of today (Annexure I)**

**Heavy to very Heavy rainfall** at isolated places over Tamil Nadu, Puducherry & Karaikal and Vidarbha; **Heavy rainfall** at isolated places over Gujarat State, Rayalaseema, Coastal Andhra Pradesh & Yanam, West Madhya Pradesh, Madhya Maharashtra, Konkan & Goa.

**On further Withdrawal of Southwest Monsoon and Onset of Northeast Monsoon**

- ❖ **Southwest Monsoon** has further withdrawn from remaining parts of Assam, Meghalaya, entire Arunachal Pradesh, Nagaland, Manipur, Mizoram and Tripura, most parts of north Bay of Bengal. The **line of withdrawal of Southwest Monsoon** now passes through 18.5°N/92.0°E, 18.5°N/90.0°E, Gopalpur, Raipur, 22.5°N/79.5°E, Khargone, Nandurbar, Navsari and 20°N/70°E.
- ❖ Conditions are favourable for further **withdrawal of Southwest Monsoon** from remaining parts of Gujarat, Madhya Pradesh, Chhattisgarh, Odisha & some more parts of Maharashtra during next 2 days.
- ❖ Thereafter **Southwest Monsoon** is likely to withdraw from remaining parts of the country during subsequent 2 days. Simultaneously with the setting in of easterly & northeasterly winds over southern peninsular India, south & adjoining central Bay of Bengal, the **Northeast Monsoon** rainfall activity is likely to commence over south east peninsular region during the same period.

**Weather Systems:**

- ❖ The **Depression** over central Arabian sea moved slowly west-northwestwards with a speed of 4 kmph during past 6 hours, and lay centred at 0830 hours IST of today, the 14th October, 2024 over the same region near latitude 15.8°N and longitude 64.3°E, about 790 km southeast of Masirah (Oman), 1100 km east of Salalah (Oman) and 1310 km east of Al Ghaidah (Yemen). It is likely to move west-northwestwards towards Oman coast and weaken gradually into a well-marked low pressure area during next 24 hours.
- ❖ A **low pressure area** lay over southeast Bay of Bengal at 0830 hrs IST of today, the 14th October 2024. It is likely to move west-northwestwards and become **well marked low pressure area** over central parts of south Bay of Bengal by 15th October. Thereafter, it is likely to continue to move west-northwestwards towards north Tamil Nadu, Puducherry and adjoining south Andhra Pradesh coasts during subsequent 2 days.
- ❖ A **cyclonic circulation** lies over westcentral Bay of Bengal off south coastal Andhra Pradesh and extends upto middle tropospheric levels tilting southwestwards with height.

## Forecast & Warnings (upto 7 days) (Annexure II & III):

### South Peninsular India

- ✓ Fairly widespread to widespread light to moderate rainfall very likely over Kerala & Mahe, Lakshadweep, Puducherry & Karaikal, Kerala & Mahe, Coastal Karnataka, Rayalaseema during the week; Tamil Nadu, Puducherry & Karaikal during 3 days; Interior Karnataka, Coastal Andhra Pradesh & Yanam during 4 days; Scattered to Fairly widespread light to moderate rainfall over Tamil Nadu, Puducherry & Karaikal during next 4 days; Interior Karnataka during next 3 days; Isolated to Scattered light to moderate rainfall over Telangana over the week.
- ✓ **Isolated extremely heavy rainfall** very likely over Tamil Nadu, Puducherry & Karaikal on 15<sup>th</sup> - 16<sup>th</sup> and over South Interior Karnataka on 17<sup>th</sup> October.
- ✓ **Isolated very heavy rainfall** very likely over Tamil Nadu, Puducherry & Karaikal, Kerala & Mahe, South Interior Karnataka and Rayalaseema during 14<sup>th</sup>-17<sup>th</sup>; Coastal Andhra Pradesh & Yanam on 14<sup>th</sup> to 16<sup>th</sup>; Coastal Karnataka on 17<sup>th</sup> October.
- ✓ **Isolated heavy rainfall** very likely over Kerala & Mahe on 18<sup>th</sup>, Coastal Andhra Pradesh & Yanam, Coastal Karnataka and South Interior Karnataka during 14<sup>th</sup> to 17<sup>th</sup> North Interior Karnataka on 16<sup>th</sup> and 17<sup>th</sup> October and Lakshadweep on 17<sup>th</sup> & 18<sup>th</sup> October.

### West & Central India

- ✓ Scattered to Fairly widespread light to moderate rainfall very likely over Konkan & Goa, Gujarat State during 2 days; Isolated to Scattered light to moderate rainfall over same region during subsequent 5 days; Isolated to Scattered light to moderate rainfall over Madhya Maharashtra, Marathwada, Madhya Pradesh, Vidarbha, Chhattisgarh during the week.
- ✓ **Isolated heavy rainfall** very likely Konkan & Goa on 14<sup>th</sup> -15<sup>th</sup> October, Gujarat State on 14<sup>th</sup> October, Madhya Maharashtra on 15<sup>th</sup> October.

### Northeast, Northwest India & East India:

- ✓ No significant rainfall likely over these regions during the week.

### Fishermen warning:

**Day 1 (14<sup>th</sup> october to 15<sup>th</sup> october):** Squally weather with wind speed 35 kmph to 45 kmph gusting to 55 kmph very likely to prevail over many parts of west central Arabian Sea and adjoining parts of eastcentral Arabian Sea, southern parts of north Arabian Sea, along and off Somalia coast, many parts of southwest Arabian Sea. Squally weather with wind speed 40 kmph to 50 kmph gusting to 60 kmph is likely to prevail over central parts of westcentral Arabian Sea.

Squally weather with wind speed 35 kmph to 45 kmph gusting to 55 kmph very likely to prevail over Gulf of Mannar, along and off Sri Lanka coast, along and off Tamil Nadu, south Andhra Pradesh coasts, southwest Bay of Bengal and many parts of southeast Bay of Bengal, many parts of westcentral Bay of Bengal, few parts of eastcentral Bay of Bengal.

**Day 2 (15<sup>th</sup> october to 16<sup>th</sup> october):** Squally weather with wind speed 35 kmph to 45 kmph gusting to 55 kmph is likely to prevail over Gulf of Mannar, along and off Sri Lanka coast, along and off Tamil Nadu, south Andhra Pradesh coasts, southwest Bay of Bengal and many parts of southeast Bay of Bengal, many parts of westcentral Bay of Bengal, few parts of eastcentral Bay of Bengal. Fishermen are advised not to venture into these areas.

**Day 3 (16<sup>th</sup> october to 17<sup>th</sup> october):** Squally weather with wind speed 35 kmph to 45 kmph gusting to 55 kmph is likely to prevail over along and off Kerala, Karnataka coasts and adjoining Lakshadweep area, over Comorin area, Gulf of Mannar, along and off Sri Lanka coast, along and off Tamil Nadu, Andhra Pradesh coasts, southwest Bay of Bengal adjoining southeast Bay of Bengal, many parts of westcentral Bay of Bengal. Squally weather with wind speed 40 kmph to 50 kmph gusting to 60 kmph is likely to prevail over northern parts of southwest Bay of Bengal, southern parts of westcentral Bay of Bengal, along and off north Sri Lanka coast, north Tamil Nadu and adjoining south Andhra Pradesh. Fishermen are advised not to venture into these areas.

**Day 4 (17<sup>th</sup> october to 18<sup>th</sup> october):** Squally weather with wind speed 35 kmph to 45 kmph gusting to 55 kmph is likely to prevail over along and off Kerala, Karnataka coasts and adjoining Lakshadweep area, over Comorin area, Gulf of Mannar, along and off Sri Lanka coast, along and off Tamil Nadu, Andhra Pradesh coasts, southwest Bay of Bengal adjoining southeast Bay of Bengal, many parts of westcentral Bay of Bengal. Squally weather with wind speed 40 kmph to 50 kmph gusting to 60 kmph is likely to prevail over northern parts of southwest Bay of Bengal, southern parts of westcentral Bay of Bengal, north Tamil Nadu and adjoining south Andhra Pradesh coasts. Fishermen are advised not to venture into these areas.

**Day 5 (18<sup>th</sup> october to 19<sup>th</sup> october):** Squally weather with wind speed 35 kmph to 45 kmph gusting to 55 kmph is likely to prevail over along and off Kerala, Karnataka coasts and adjoining Lakshadweep area, over Comorin area, Gulf of Mannar, along and off Sri Lanka coast, along and off Tamil Nadu, Andhra Pradesh coasts, over southwest Bay of Bengal, few parts of westcentral Bay of Bengal. Squally weather with wind speed 40 kmph to 50 kmph gusting to 60 kmph is likely to prevail over along and off north Tamil Nadu and adjoining south Andhra Pradesh coasts and adjoining sea area. Fishermen are advised not to venture into these areas.

### **Southwest Monsoon withdrawal Map (ANNEXURE IV)**

**For more details, kindly refer:** [https://mausam.imd.gov.in/responsive/all\\_india\\_forecast\\_bulletin.php](https://mausam.imd.gov.in/responsive/all_india_forecast_bulletin.php)

**For District wise warnings refer:** <https://mausam.imd.gov.in/responsive/districtWiseWarningGIS.php>

**For Fishermen warnings, kindly refer:**

[https://rsmcnewdelhi.imd.gov.in/uploads/archive/51/51\\_bdf575\\_GRAPHIC.png](https://rsmcnewdelhi.imd.gov.in/uploads/archive/51/51_bdf575_GRAPHIC.png)

## ANNEXURE I

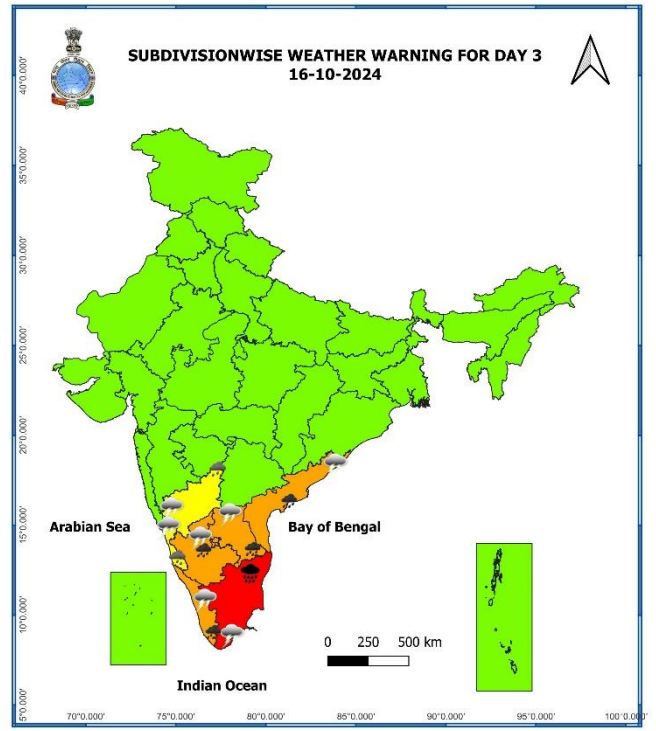
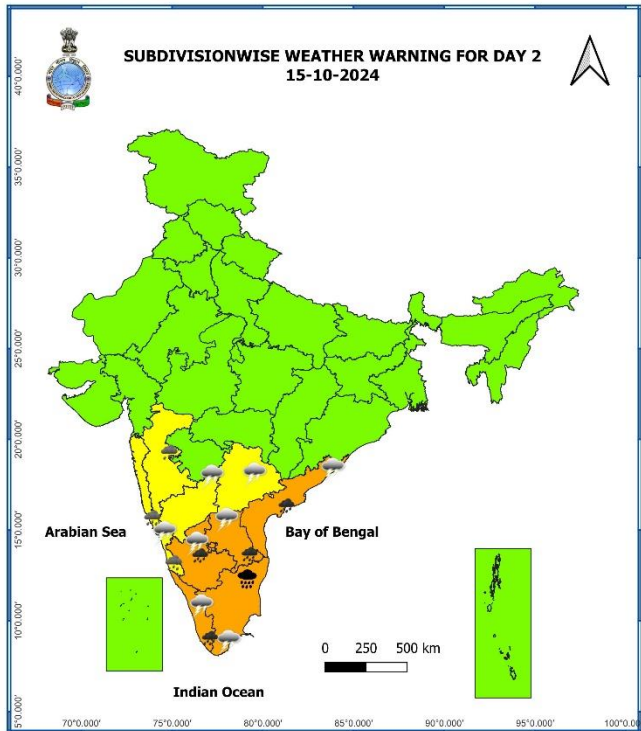
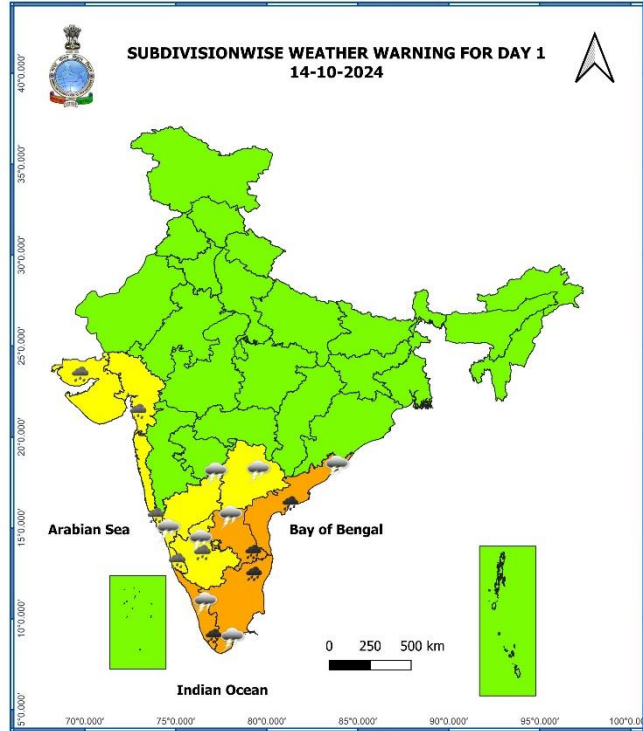
**Significant Rainfall recorded during past 24 hours till 0830 hours IST of today 14.10.2024 (in cm):**

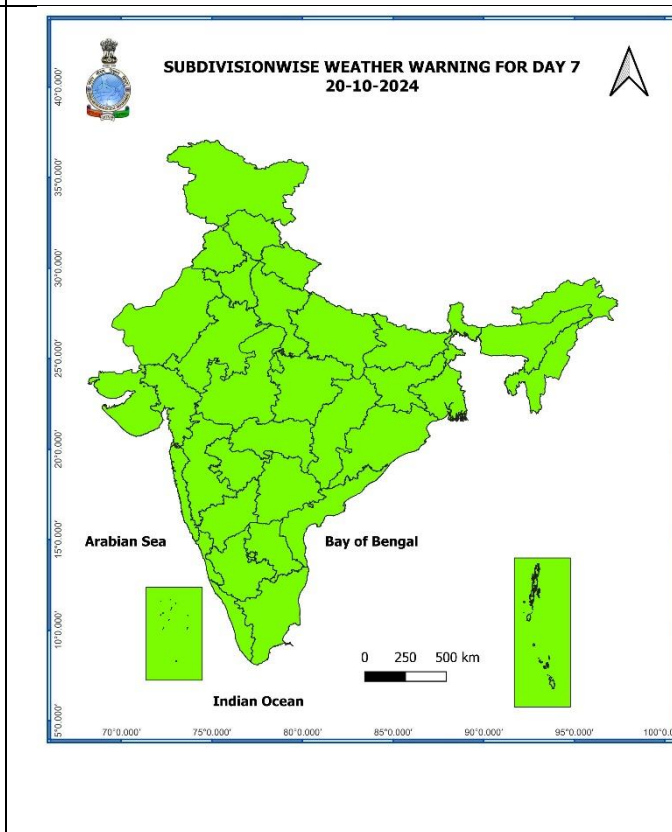
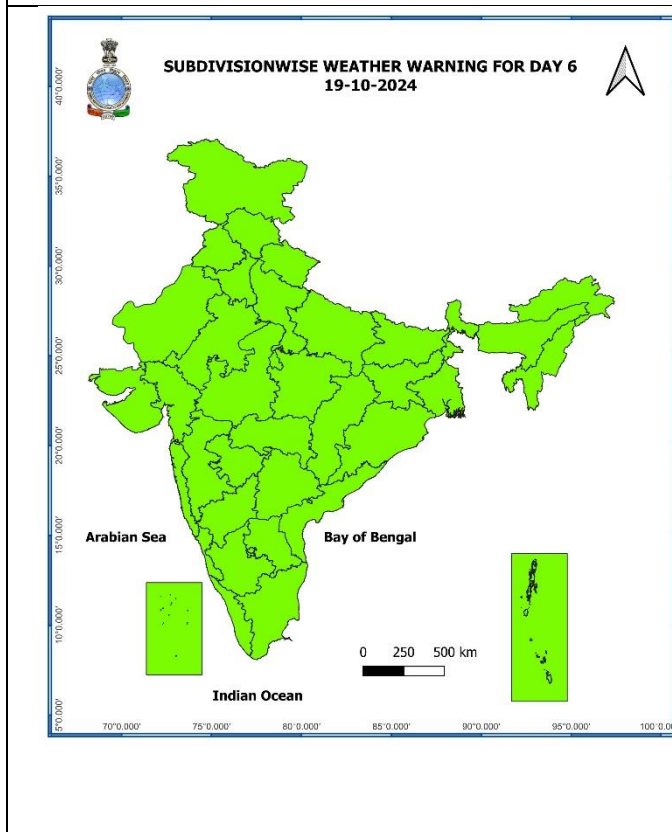
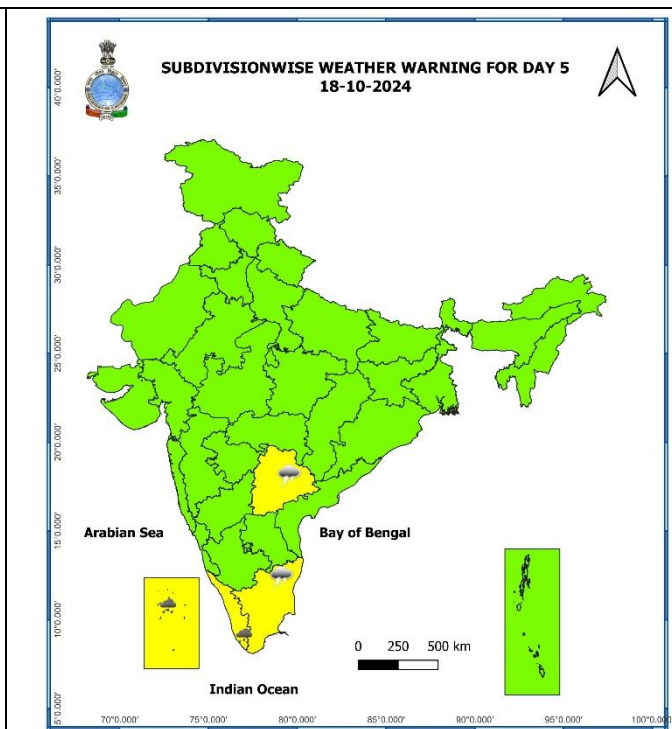
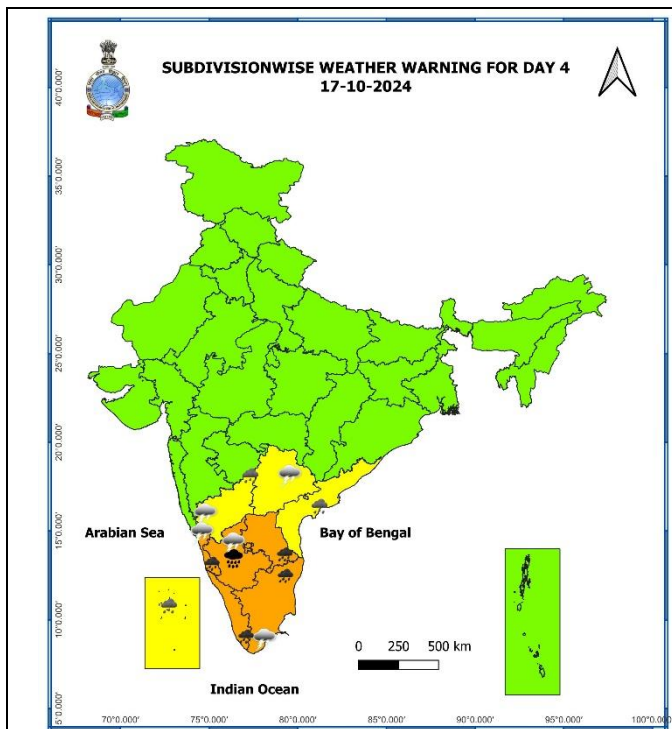
- ❖ **Vidarbha:** Malkapur (dist Buldhana) 12;
- ❖ **Tamil Nadu, Puducherry & Karaikal:** Budalur (dist Thanjavur) 12, Karaikal (dist Karaikal), Coimbatore South (dist Coimbatore) 8 each, Andipatti (dist Madurai), Coimbatore AWS (dist Coimbatore), Hindustan\_University (distKancheepuram), DGP Office (dist Chennai), Sattur (dist Virudhunagar) 7 each
- ❖ **Saurashtra & Kutch:** Bhuj (dist Kutch) 9, Dasada (dist Surendranagar) 8, Visavadar (dist Junagadh) 7, Wadhvan (dist Surendranagar) 7;
- ❖ **WEST MADHYA PRADESH-** Betul (dist Betul) 9, Badnagar (dist Ujjain) 8, Shajapur (dist Shajapur) 7, Piploda (dist Ratlam) 7;
- ❖ **MADHYA MAHARASHTRA:** Nandgaon (dist Nashik) 9, Sakri (dist Dhule) 9, Pimpalgaonbaswant\_agri (dist Nashik) 7;
- ❖ **Coastal Andhra Pradesh:** Ongole (dist Prakasam) 8;
- ❖ **Rayalaseema:** Tada (dist Tirupati) 8;
- ❖ **KONKAN & GOA:** Matheran (dist Raigad) 8, Roha (dist Raigad) 7, Sudhagad Pali (dist Raigad) 7;
- ❖ **Gujarat Region:** Ukai (dist Surat) 7, Dangs (ahwa) (dist Dangs) 7, Bodeli (dist Chhota Udepur) 7; Umerpada (dist Surat) 7, Dediapada (dist Narmada) 6, Waghai (dist Dangs) 6, Narmada\_kvK Aws (dist Narmada) 6;
- ❖ **East Rajasthan:** Dungla (dist Chittorgarh) 5, Nimbahera (dist Chittorgarh) 4;
- ❖ **Odisha:** Ganjam (dist Ganjam) 5, Telkoi (dist Keonjhar) 5;

**ANNEXURE II**

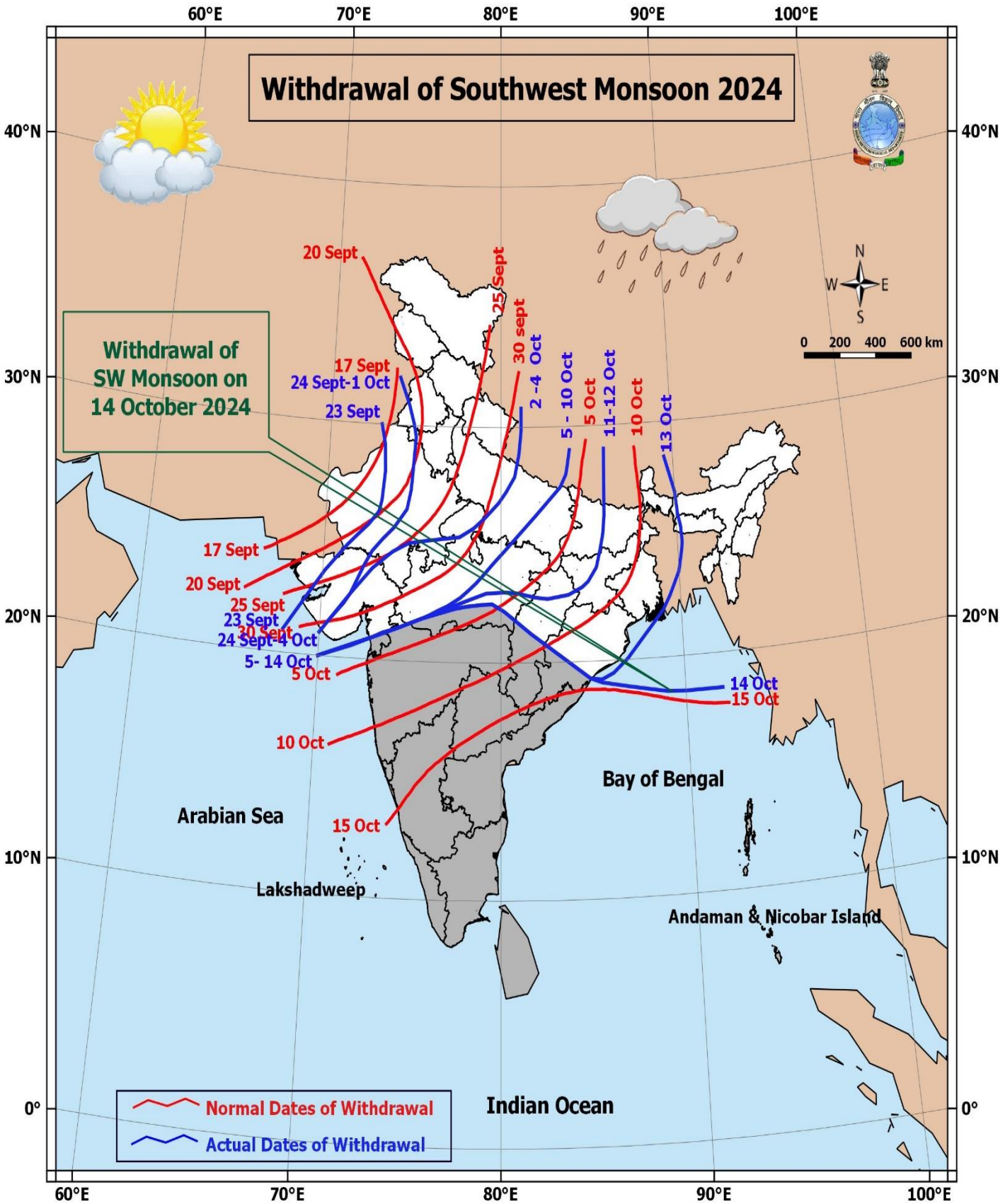
7 Days Rainfall Forecast								
S. No.	Subdivision	14-Oct	15-Oct	16-Oct	17-Oct	18-Oct	19-Oct	20-Oct
		Day 1	Day 2	Day 3	Day 4	Day 5	Day 6	Day 7
1	ANDAMAN & NICOBAR ISLANDS	WS	FWS	FWS	FWS	WS	WS	WS
2	ARUNACHAL PRADESH	ISOL	ISOL	ISOL	ISOL	ISOL	ISOL	ISOL
3	ASSAM & MEGHALAYA	ISOL	ISOL	ISOL	ISOL	ISOL	ISOL	ISOL
4	NAGALAND, MANIPUR, MIZORAM & TRIPURA	ISOL	ISOL	ISOL	ISOL	ISOL	ISOL	ISOL
5	SUB-HIMALAYAN WEST BENGAL & SIKKIM	SCT	ISOL	ISOL	ISOL	ISOL	ISOL	ISOL
6	GANGETIC WEST BENGAL	ISOL	ISOL	ISOL	ISOL	SCT	SCT	ISOL
7	ODISHA	ISOL	ISOL	SCT	SCT	SCT	ISOL	ISOL
8	JHARKHAND	DRY	ISOL	ISOL	ISOL	ISOL	ISOL	ISOL
9	BIHAR	DRY	DRY	DRY	DRY	ISOL	ISOL	ISOL
10	EAST UTTAR PRADESH	DRY	DRY	DRY	DRY	DRY	DRY	DRY
11	WEST UTTAR PRADESH	DRY	DRY	DRY	DRY	DRY	DRY	DRY
12	UTTARAKHAND	DRY	DRY	DRY	DRY	DRY	DRY	DRY
13	HARYANA CHANDIGARH & DELHI	DRY	DRY	DRY	DRY	DRY	DRY	DRY
14	PUNJAB	DRY	DRY	DRY	DRY	DRY	DRY	DRY
15	HIMACHAL PRADESH	DRY	DRY	DRY	DRY	DRY	ISOL	ISOL
16	JAMMU & KASHMIR AND LADAKH	DRY	DRY	ISOL	ISOL	ISOL	DRY	DRY
17	WEST RAJASTHAN	ISOL	DRY	DRY	DRY	DRY	DRY	DRY
18	EAST RAJASTHAN	ISOL	ISOL	DRY	DRY	DRY	DRY	DRY
19	WEST MADHYA PRADESH	SCT	ISOL	DRY	DRY	ISOL	ISOL	ISOL
20	EAST MADHYA PRADESH	ISOL	ISOL	ISOL	ISOL	ISOL	ISOL	ISOL
21	GUJARAT REGION	FWS	SCT	ISOL	ISOL	ISOL	ISOL	ISOL
22	SAURASHTRA & KUTCH	FWS	SCT	ISOL	DRY	DRY	ISOL	ISOL
23	KONKAN & GOA	FWS	FWS	SCT	SCT	SCT	SCT	SCT
24	MADHYA MAHARASHTRA	SCT	SCT	ISOL	ISOL	ISOL	SCT	SCT
25	MARATHAWADA	ISOL	ISOL	ISOL	ISOL	SCT	SCT	SCT
26	VIDARBHA	ISOL	ISOL	ISOL	SCT	SCT	SCT	ISOL
27	CHHATTISGARH	ISOL	ISOL	ISOL	ISOL	ISOL	ISOL	ISOL
28	COASTAL ANDHRA PRADESH & YANAM	FWS	FWS	FWS	FWS	SCT	SCT	SCT
29	TELANGANA	ISOL	ISOL	ISOL	SCT	SCT	SCT	SCT
30	RAYALASEEMA	FWS	FWS	WS	FWS	FWS	SCT	SCT
31	TAMILNADU PUDUCHERRY & KARAIKAL	WS	WS	FWS	SCT	ISOL	ISOL	ISOL
32	COASTAL KARNATAKA	WS	WS	WS	WS	FWS	SCT	SCT
33	NORTH INTERIOR KARNATAKA	FWS	FWS	FWS	WS	SCT	SCT	SCT
34	SOUTH INTERIOR KARNATAKA	WS	WS	WS	WS	SCT	SCT	SCT
35	KERALA & MAHE	WS	WS	WS	WS	WS	FWS	FWS
36	LAKSHADWEEP	FWS	FWS	WS	WS	WS	FWS	FWS

- As the lead period increases forecast accuracy decreases.





- Action may be taken based on **ORANGE AND RED COLOUR** warnings.
- **Vulnerable regions** likely urban and hilly areas action may be initiated for heavy rainfall warning.
- As the lead period increases forecast accuracy decreases.





## Impact due to

- ✓ **Isolated extremely heavy rainfall** very likely over Tamil Nadu, Puducherry & Karaikal on 15<sup>th</sup> - 16<sup>th</sup> and over South Interior Karnataka on 17<sup>th</sup> October.
- ✓ **Isolated very heavy rainfall** very likely over Tamil Nadu, Puducherry & Karaikal, Kerala & Mahe, South Interior Karnataka and Rayalaseema during 14<sup>th</sup>-17<sup>th</sup>; Coastal Andhra Pradesh & Yanam on 14<sup>th</sup> to 16<sup>th</sup>; Coastal Karnataka on 17<sup>th</sup> October.

## Impact Expected

- ✓ Localized Flooding of roads, water logging in low lying areas and closure of underpasses mainly in urban areas of the above region.
- ✓ Occasional reduction in visibility due to heavy rainfall.
- ✓ Disruption of traffic in major cities and roadways due to water logging in roads leading to increased travel time.
- ✓ Minor damage to kutcha roads.
- ✓ Possibilities of damage to vulnerable structure.
- ✓ Localized Landslides/Mudslides/landslips/mud slips/land sinks/mud sinks.
- ✓ Damage to horticulture and standing crops in some areas due to inundation and wind.
- ✓ It may lead to riverine flooding in some river catchments (for riverine flooding please visit Web page of CWC)

## Action Suggested

- ✓ Judicious regulation of surface transports including railways and roadways.
- ✓ Check for traffic congestion on your route before leaving for your destination.
- ✓ Follow any traffic advisories that are issued in this regard.
- ✓ Avoid going to areas that face the water logging problems often.
- ✓ Avoid staying in vulnerable structure

## Agromet advisories for Heavy Rainfall likely over various parts of the country

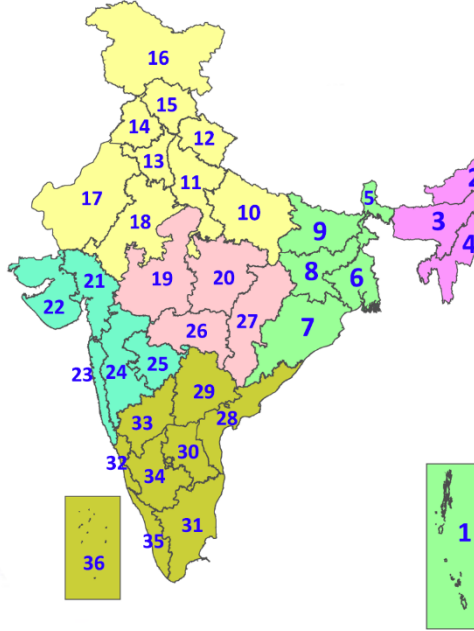
- ✓ In **Tamil Nadu**, drain out excess water from rice nurseries and fields of rice, maize, pepper and newly planted turmeric. Provide support to banana plantations.
- ✓ Make necessary arrangements for draining out excess water from standing crop fields and fruit orchards to avoid water stagnation in Madhya Maharashtra, Vidarbha, Goa, Gujarat, Kerala, Coastal and South Interior Karnataka and Andhra Pradesh.
- ✓ Keep the harvested produce at safer places.
- ✓ Provide mechanical support to horticultural crops & staking to vegetables.

## Legends & abbreviations:

- ❖ **Heavy Rain:**64.5-115.5mm; **Very Heavy Rain:**115.6-204.4mm; **Extremely Heavy Rain:** >204.4mm.
- ❖ **Obsy:** Observatory; **AWS:** Automatic Weather Station; **ARG:** Automatic Rain Gauge; **dist:** District; **NH:** National Highway; **KVK:** Krishi Vigyan Kendra; **DVC:** Damodar Valley Corporation; **PTO:** Part Time Office, **Aero:** Aerodrome, **IAF:** Indian Air Force.
- ❖ **Region wise classification of meteorological Sub-Divisions:**
  - **Northwest India:** Western Himalayan Region (Jammu-Kashmir-Ladakh-Gilgit-Baltistan-Muzaffarabad, Himachal Pradesh and Uttarakhand); Punjab, Haryana-Chandigarh-Delhi; West Uttar Pradesh, East Uttar Pradesh, West Rajasthan and East Rajasthan.
  - **Central India:** West Madhya Pradesh, East Madhya Pradesh, Vidarbha and Chhattisgarh.
  - **East India:** Bihar, Jharkhand, Sub-Himalayan West Bengal & Sikkim; Gangetic West Bengal, Odisha and Andaman & Nicobar Islands.
  - **Northeast India:** Arunachal Pradesh, Assam & Meghalaya and Nagaland, Manipur, Mizoram & Tripura.
  - **West India:** Gujarat Region, Saurashtra & Kutch, Konkan & Goa, Madhya Maharashtra and Marathawada.
  - **South India:** Coastal Andhra Pradesh & Yanam, Telangana, Rayalaseema, Coastal Karnataka, North Interior Karnataka, South Interior Karnataka, Kerala & Mahe, Tamil Nadu, Puducherry & Karaikal and Lakshadweep.

## LEGENDS

1. अंडमान और निकोबार द्वीपसमूह
2. अरुणाचल प्रदेश
3. असम और मेघालय
4. नागालैंड, मणिपुर, मिजोरम और त्रिपुरा
5. उप-हिमालयी पश्चिम बंगाल और सिक्किम
6. गंगीय पश्चिम बंगाल
7. ओडिशा
8. झारखंड
9. बिहार
10. पूर्वी उत्तर प्रदेश
11. पश्चिम उत्तर प्रदेश
12. उत्तराखंड
13. हरियाणा, चंडीगढ़ और दिल्ली
14. पंजाब
15. हिमाचल प्रदेश
16. जम्मू और कश्मीर और लद्दाख
17. पश्चिम राजस्थान
18. पूर्वी राजस्थान
19. पश्चिम मध्य प्रदेश
20. पूर्वी मध्य प्रदेश
21. गुजरात
22. सौराष्ट्र
23. कोंकण और गोवा
24. मध्य महाराष्ट्र
25. मराठवाड़ा
26. विदर्भ
27. छत्तीसगढ़
28. तटीय आंध्र प्रदेश और यनम
29. तेलंगाना
30. रायलसेमा
31. तमिलनाडु, पुडुचेरी और कराईकल
32. तटीय कर्नाटक
33. आंतरिक उत्तरी कर्नाटक
34. आंतरिक दक्षिणी कर्नाटक
35. केरल और माहे
36. लक्षद्वीप



1. Andaman & Nicobar Islands
2. Arunachal Pradesh
3. Assam & Meghalaya
4. Nagaland, Manipur, Mizoram & Tripura
5. Sub-Himalayan West Bengal & Sikkim
6. Gangetic West Bengal
7. Odisha
8. Jharkhand
9. Bihar
10. East Uttar Pradesh
11. West Uttar Pradesh
12. Uttarakhand
13. Haryana, Chandigarh & Delhi
14. Punjab
15. Himachal Pradesh
16. Jammu & Kashmir and Ladakh
17. West Rajasthan
18. East Rajasthan
19. West Madhya Pradesh
20. East Madhya Pradesh
21. Gujarat
22. Saurashtra
23. Konkan & Goa
24. Madhya Maharashtra
25. Marathwada
26. Vidarbha
27. Chhattisgarh
28. Coastal Andhra Pradesh & Yanam
29. Telangana
30. Rayalaseema
31. Tamilnadu, Puducherry & Karaikal
32. Coastal Karnataka
33. North Interior Karnataka
34. South Interior Karnataka
35. Kerala & Mahe
36. Lakshadweep

## SPATIAL DISTRIBUTION (% of Stations reporting)

% Stations	Category	% Stations	Category
76-100	Widespread (WS/Most Places)	26-50	Scattered (SCT/A Few Places)
51-75	Fairly Widespread (FWS/Many Places)	1-25	Isolated (ISOL)

- |                      |                      |              |
|----------------------|----------------------|--------------|
| Fog                  | Heavy Snow           | Cold Wave    |
| Heavy Rain           | Dust Storm           | Cold Day     |
| Very Heavy Rain      | Heat Wave            | Ground Frost |
| Extremely Heavy Rain | Warm Night           |              |
| Thunder & Lightning  | Hot Day              |              |
| Hailstorm            | Hot & Humid          |              |
| Dust Raising Winds   | Strong Surface Winds |              |

### COLOUR CODED WARNING

- No Warning (No Action)
- Watch (Be Aware)
- Alert (Be Prepared To Take Action)
- Warning (Take Action)

### Probabilistic Forecast

Terms	Probability of Occurrence (%)
Unlikely	< 25
Likely	25 - 50
Very Likely	50 - 75
Most Likely	> 75

\* Red colour warning does not mean "Red Alert", Red colour warning means "Take Action".  
Forecast and Warning for any day is valid from 0830 hours IST of day till 0830 hours IST of next day.  
For more details, kindly visit <https://mausam.imd.gov.in> or contact: 011-2434-4599  
(Service to the Nation since 1875)

### DEFINITION/CRITERIA

<b>Rain/ Snow *</b>	<p><b>Heavy:</b> 64.5 to 115.5 mm/cm *</p> <p><b>Very Heavy:</b> 115.6 to 204.4 mm/cm*</p> <p><b>Extremely Heavy:</b> &gt; 204.4 mm/cm *</p>
<b>Heat Wave</b>	<p><b>When maximum temperature of a station reaches <math>\geq 40^\circ\text{C}</math> for plains and <math>\geq 30^\circ\text{C}</math> for hilly regions</b></p> <p><b>(a) Based on Departure from normal</b></p> <p><b>Heat Wave:</b> Maximum Temperature Departure from normal <math>4.5^\circ\text{C}</math> to <math>6.4^\circ\text{C}</math>.</p> <p><b>Severe Heat Wave:</b> Maximum Temperature Departure from normal <math>\geq 6.5^\circ\text{C}</math></p> <p><b>(b). Based on Actual maximum temperature</b></p> <p><b>Heat Wave:</b> When actual maximum temperature <math>\geq 45^\circ\text{C}</math>.</p> <p><b>Severe Heat Wave:</b> When actual maximum temperature <math>\geq 47^\circ\text{C}</math></p> <p><b>(c). Criteria for heat wave for coastal stations</b></p> <p>When maximum temperature departure is <math>&gt;4.5^\circ\text{C}</math> from normal. Heat Wave may be described provided maximum temperature <math>\geq 37^\circ\text{C}</math></p>
<b>Warm Night</b>	<p><b>When maximum temperature remains <math>40^\circ\text{C}</math></b></p> <p><b>Warm Night:</b> When minimum temperature departure <math>4.5^\circ\text{C}</math> to <math>6.4^\circ\text{C}</math>.</p> <p><b>Severe Warm Night:</b> When minimum temperature departure <math>&gt;6.4^\circ\text{C}</math>.</p>
<b>Cold Wave</b>	<p><b>When minimum temperature of a station <math>\leq 10^\circ\text{C}</math> for plains and <math>\leq 0^\circ\text{C}</math> for hilly regions.</b></p> <p><b>(a). Based on departure</b></p> <p><b>Cold Wave:</b> Minimum Temperature Departure from normal <math>-4.5^\circ\text{C}</math> to <math>-6.4^\circ\text{C}</math>.</p> <p><b>Severe Cold Wave:</b> Minimum Temperature Departure from normal <math>\leq -6.5^\circ\text{C}</math></p> <p><b>(b) Based on actual Minimum Temperature (for Plains only)</b></p> <p><b>Cold Wave :</b> When Minimum Temperature is <math>\leq 4.0^\circ\text{C}</math></p> <p><b>Severe Cold Wave:</b> When Minimum Temperature is <math>\leq 2.0^\circ\text{C}</math></p> <p><b>(c) For Coastal Stations</b></p> <p>When Minimum Temperature departure is <math>\leq -4.5^\circ\text{C}</math> &amp; actual Minimum Temperature is <math>\leq 15^\circ\text{C}</math></p>
<b>Cold Day</b>	<p><b>When minimum temperature of a station <math>\leq 10^\circ\text{C}</math> for plains and <math>\leq 0^\circ\text{C}</math> for hilly regions</b></p> <p><b>Based on departure</b></p> <p><b>Cold Day:</b> Maximum Temperature Departure from normal <math>-4.5^\circ\text{C}</math> to <math>-6.4^\circ\text{C}</math>.</p> <p><b>Severe Cold Day:</b> Maximum Temperature Departure from normal <math>\leq -6.5^\circ\text{C}</math></p>
<b>Fog</b>	<p><b>Phenomenon of small droplets suspended in air and the horizontal visibility <math>&lt; 1\text{km}</math></b></p> <p><b>Moderate Fog:</b> When the visibility between 500-200 metres</p> <p><b>Dense Fog:</b> when the visibility between 50- 200 metres</p> <p><b>Very Dense Fog:</b> when the visibility <math>&lt; 50</math> metres</p>
<b>Thunderstorm</b>	<p><b>Sudden electrical discharges manifested by a flash of light (Lightning) and a sharp rumbling sound (thunder)</b></p>
<b>Dust/Sand Storm</b>	<p><b>An ensemble of particles of dust or sand energetically lifted to great heights by a strong and turbulent wind.</b></p>
<b>Frost</b>	<p><b>Ice deposits on ground</b></p> <p>Air temperature <math>\leq 4^\circ\text{C}</math> ( over Plains)</p>
<b>Squall</b>	<p><b>A strong wind that rises suddenly, lasts for atleast 1 minute.</b></p> <p><b>Moderate:</b> Wind speed 52-61 kmph</p> <p><b>Severe:</b> Wind speed 62-87 kmph</p> <p><b>Very Severe:</b> Wind speed <math>&gt;87</math> kmph</p>
<b>Sea State</b>	<p><b>Effect of various waves in the sea over specific area</b></p> <p><b>Rough to very rough:</b> Wind speed 41-62 kmph (22-33 knots) &amp; Wave height 2.5-6 metre</p> <p><b>High to very high:</b> Wind speed 63-117 kmph ( 34-63 knots) &amp; Wave height 6-14 metre</p> <p><b>Phenomenal:</b> Wind speed <math>&gt;117</math> kmph (<math>&gt;63</math> knots) &amp; Wave height <math>&gt;14</math> metre</p>
<b>Cyclone</b>	<p><b>Cyclonic Storm:</b> Wind speed 62-87 kmph (34-47 knots)</p> <p><b>Severe Cyclonic Storm:</b> Wind speed 88-117 kmph (48-63 knots)</p> <p><b>Very Severe Cyclonic Storm:</b> Wind speed 118-165 kmph (64 - 89 knots)</p> <p><b>Extremely Severe Cyclonic Storm:</b> Wind speed 166-220 kmph (90 -119 knots)</p> <p><b>Super Cyclone Strom:</b> Wind speed <math>&gt;220</math> kmph (<math>&gt;119</math> knots)</p>

\* Red colour warning does not mean "Red Alert", Red colour warning means "Take Action".  
Forecast and Warning for any day is valid from 0830 hours IST of day till 0830 hours IST of next day.  
For more details, kindly visit <https://mausam.imd.gov.in> or contact: 011-2434-4599  
(Service to the Nation since 1875)