



Government of India
Ministry of Earth Sciences
India Meteorological Department



Press Release

Date: 25th October, 2024

Time of Issue: 1300 hours IST

Subject: (i) The Severe cyclonic storm “Dana” (pronounced as Dana) crossed north Odisha coast close to Habalikhati Nature Camp (Bhitarkanika) and Dhamara during 0130 hrs IST to 0330 hrs IST of today, 25th October as a Severe cyclonic storm with a wind speed of 100-110 kmph gusting to 120 kmph.
(ii) Isolated extremely heavy rainfall very likely over coastal Odisha, south Gangetic West Bengal (east & west Medinipur) on 25th October, 2024.

Realised rainfall during past 24 hours till 0830 hours IST of today (Annexure I)

- ❖ **Heavy to very heavy rainfall** at isolated places over Tamil Nadu, Puducherry & Karaikal, Odisha; **Heavy rainfall** at isolated places over Kerala & Mahe, Coastal Karnataka, Gangetic West Bengal.
- ❖ **Storm surge** of 1.0 to 2.0 m height above astronomical tide observed over low lying areas of Kendrapara, Bhadrak & Balasore districts of Odisha and East Medinipur districts of West Bengal during the time of landfall.

Weather Systems:

- ❖ The **Severe cyclonic storm “Dana” (pronounced as Dana)** over northwest Bay of Bengal moved north-northwestwards and crossed north Odisha coast close to Habalikhati Nature Camp (Bhitarkanika) and Dhamara during 0130 hrs IST to 0330 hrs IST of today, 25th October as a **severe cyclonic storm** with a wind speed of 100-110 kmph gusting to 120 kmph. It continued to move north-northwestwards and weakened into a **cyclonic storm** over north coastal Odisha and lay centred near latitude 21.20°N and longitude 86.70°E at 0830 hrs IST of today, the 25th October, about 30 km northeast of Bhadrak and 50 km north-northwest of Dhamara. The maximum sustained wind speed around the centre of the cyclone is about 80-90kmph gusting to 100kmph. The landfall process has completed. It is likely to move northwestwards across north Odisha and weaken gradually into a deep depression during next 06 hours.
- ❖ A **cyclonic circulation** lies over Southeast Arabian Sea off south Kerala coast in lower tropospheric levels.
- ❖ A fresh **Western Disturbance** as a trough in mid-tropospheric westerlies with its axis in middle tropospheric levels roughly along Long. 50°E to the north of Lat. 28°N

Forecast & Warnings (upto 7 days) (Annexure II & III):

East India

- ❖ Light to moderate rainfall at most places with **heavy rainfall over to very heavy rainfall** at a few places over **Keonjhar, Mayurbhanj, Balasore, Bhadrak, Dhenkanal, Cuttack, Jajpur, Kendrapara, Angul, Nayagarh, Khorda, Puri and Jagatsinghpur** districts of Odisha on 25th October. **Extremely heavy**

rainfall (≥ 21 cm) at isolated places is very likely over Keonjhar, Mayurbhanj, Balasore and Bhadrak districts of Odisha on 25th October.

- ❖ **Light to moderate rainfall at most places with heavy to very heavy rainfall** at a few places **with extremely heavy rainfall** at isolated places over **East & West Medinipur**, districts of Gangetic West Bengal on 25th October.
- ❖ **Light to moderate rainfall at many places with heavy to very heavy rainfall** at isolated places is likely over south Jharkhand on 25th October.

South Peninsular India

- ✓ **Light to moderate rainfall** at a few places accompanied with isolated thunderstorm and lightning very likely over Tamil Nadu, Puducherry & Karaikal, Kerala & Mahe and Lakshadweep during next 2-3 days and reduction thereafter.
- ✓ **Isolated heavy to very heavy rainfall** very likely over Kerala & Mahe on 25th October.
- ✓ **Isolated heavy rainfall** very likely over Tamil Nadu, Puducherry & Karaikal on 25th & 26th; Lakshadweep on 25th and over Kerala & Mahe during 25th–27th October.

Northeast, Central, West & Northwest India

- ✓ No significant rainfall likely over these regions during the week.

Wind Warning

- ✓ **Northwest Bay of Bengal:** Gale wind speed reaching 80-90 gusting to 100 kmph is prevailing and would gradually decrease becoming squally wind speed reaching 40-50 kmph gusting to 60 kmph from evening of 25th October 2024.
- ✓ **Along & off Odisha-west Bengal coasts:** Gale wind speed reaching 60-80 kmph gusting to 90 kmph would prevail over Balasore, Mayurbhanj, Keonjhar, Bhadrak, Kendrapara districts of Odisha and East Medinipur district of West Bengal till evening of 25th October 2024 and decrease thereafter.
- ✓ Squally wind speed reaching 40-60 kmph gusting to 70 kmph would prevail over Jagatsinghpur, Cuttack, Dhenkanal, Angul & adjoining areas of Sundargarh & Khorda districts of Odisha and south 24 Parganas, West Medinipur & Jhargram districts of West Bengal till evening of 25th October and decrease thereafter.
- ✓ **South Jharkhand:** Squally wind speed reaching 40-50 gusting to 60 kmph is very likely to prevail from morning of 25th till evening of 26th October.

Storm surge warning:

- ✓ Storm surge of upto 1.0 m height above astronomical tide is very likely to inundate low lying areas of Bhadrak & Balasore districts of Odisha and East Medinipur districts of West Bengal during next 3 hours.
- ✓ Storm surge of upto 0.5 m height above astronomical tide is very likely to inundate low lying areas of South 24-Parganas district of West Bengal during next 3 hours.

Fishermen Warning (ANNEXURE IV):

- ✓ Total suspension of fishing operations over Northwest Bay of Bengal till 25th noon.
- ✓ Fishermen are advised not to venture into Northwest Bay of Bengal and along & off Odisha and West Bengal coasts on 25th October.

For more details, kindly refer National Weather Bulletin:

https://mausam.imd.gov.in/responsive/all_india_forecast_bulletin.php

For District wise warnings refer:

<https://mausam.imd.gov.in/responsive/districtWiseWarningGIS.php>

For Fishermen warnings, kindly refer:

https://rsmcnewdelhi.imd.gov.in/uploads/archive/51/51_bdf575_GRAPHIC.png

Significant Rainfall recorded during past 24 hours till 0830 hours IST of today 25.10.2024 (in cm):

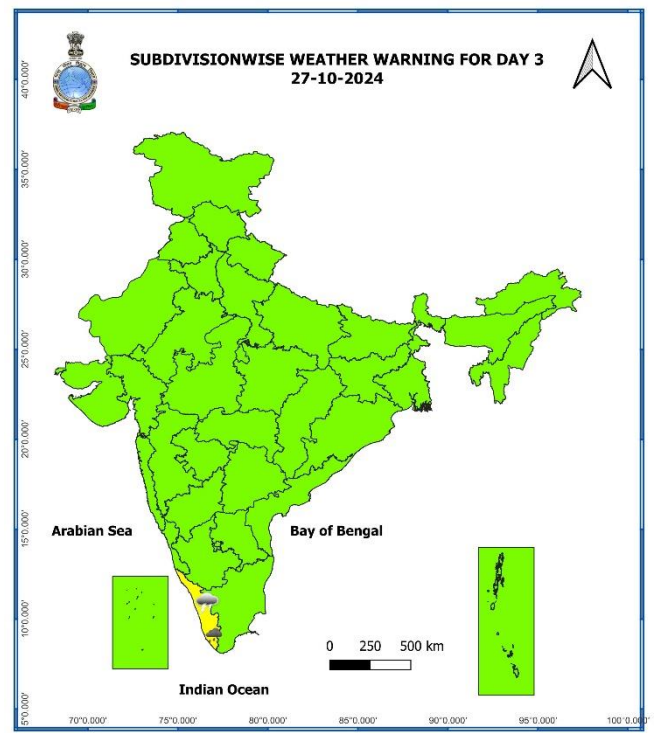
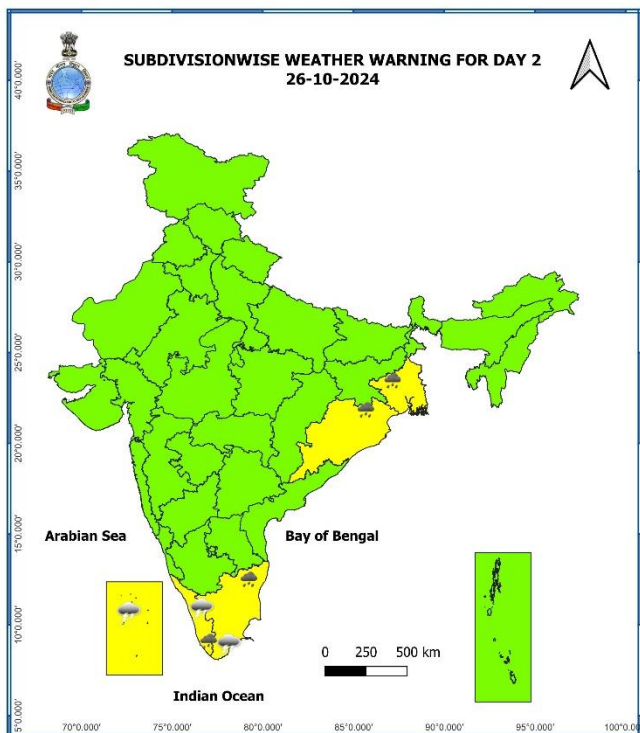
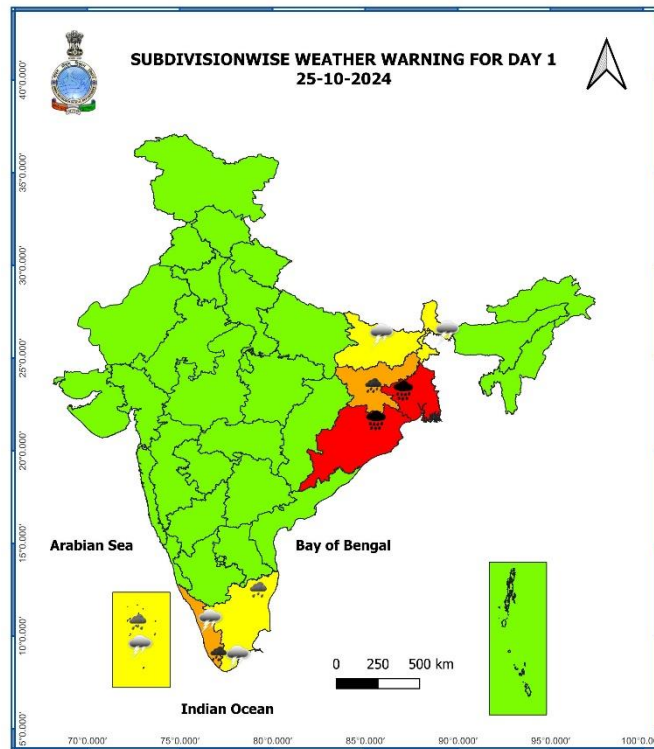
- ❖ **Odisha:** Chandbali (Bhadrak) 16, Rajkanika (Kendrapara) 16, Nawana (Mayurbhanj) 14, Marsaghai (Kendrapara) 11, Basudevpur (Bhadrak) 11, Oupada (Balasore) 11, Rajnagar (Kendrapara) 10, Mohakalapada (Kendrapara) 9, Aul (Kendrapara) 8, Paradeep Cwr (Jagatsinghpur) 8, Derabis (Kendrapara) 7, Bhadrak (Bhadrak) 7, Balasore (Balasore) 7, Jajpur Pto (Jajpur) 7, Kendrapada Pto (Kendrapara) 7, Nilgiri (Balasore) 7, Kendrapara (Kendrapara) 7, Pattamundai (Kendrapara) 7,
- ❖ **Tamil Nadu, Puducherry & Karaikal:** Anaimaduvu Dam (dist Salem) 15;Orthanad (dist Thanjavur) 13;Kozhiporvilai (dist Kanyakumari), Mannargudi (dist Thiruvavarur), Thuckalay (dist Kanyakumari), Neyyoor AWS (dist Kanyakumari), Aduthurai AWS (dist Thanjavur) 11 each; Suthamalli Dam (dist Ariyalur), Eraniel (dist Kanyakumari), Kodavasal (dist Thiruvavarur) 10 each; Manjalaru (dist Thanjavur), Needamangalam (dist Thiruvavarur) 9 each; Madurai AWS (dist Madurai), Tiruvarur (dist Thiruvavarur), Parangipettai (dist Cuddalore), Nannilam (dist Thiruvavarur), Mayiladuthurai (dist Mayiladuthurai), Kuruvadi (dist Ariyalur), Idayapatti (dist Madurai), Tirupuvanam (dist Sivagangai), Colachel (dist Kanyakumari) 8 each; Kumbakonam (dist Thanjavur), Tiruvaiyaru (dist Thanjavur), Kurunthancode (dist Kanyakumari), Mayiladuthurai AWS (dist Mayiladuthurai), Ariyalur PTO (dist Ariyalur), Ariyalur Taluk Office (dist Ariyalur), Budalur (dist Thanjavur), Vettikadu (dist Thanjavur), Tiruvarur AWS (dist Thiruvavarur), Natham AWS (dist Dindigul), Lower Anaicut (dist Thanjavur), Natham (dist Dindigul), Thiruvidadimaruthur (dist Thanjavur), Mylaudy (dist Kanyakumari) 7 each;
- ❖ **Gangetic West Bengal:** Diamond Harbour (dist South 24 Parganas) 9, Kalaikunda (Iaf) (dist West Midnapore) 9, Amfu Kharagpur (dist West Midnapore) 9, Durgachack (dist East Midnapore) 8, Mohanpur (dist West Midnapore) 7, Jhargram (pto) (dist Jhargram) 7, Uluberia (dist Howrah) 7;
- ❖ **Kerala & Mahe:** Mannarkkad (dist Palakkad) 7;
- ❖ **Coastal Karnataka:** Dharmasthala (dist Dakshina Kannada) 7, Belthangadi (dist Dakshina Kannada) 7;
- ❖ **Jharkhand:** Gurabandha (dist East Singbhum) 7;

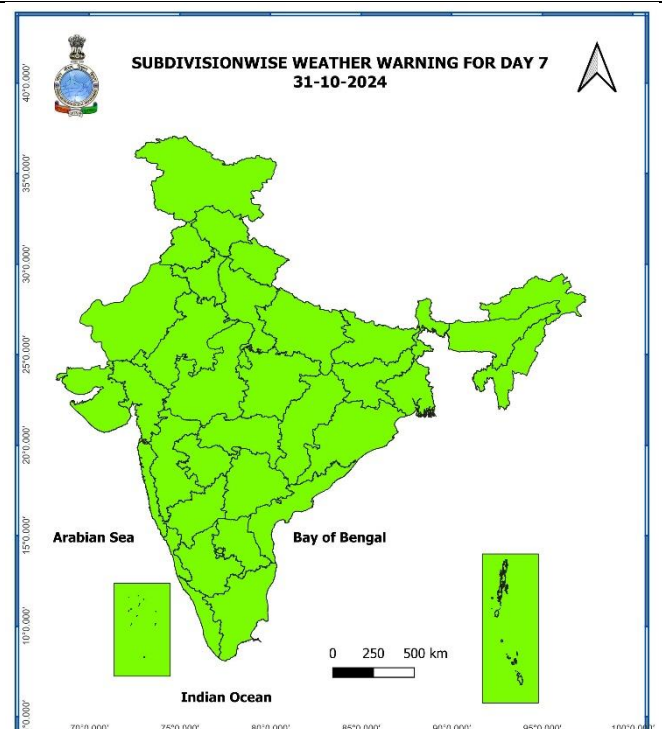
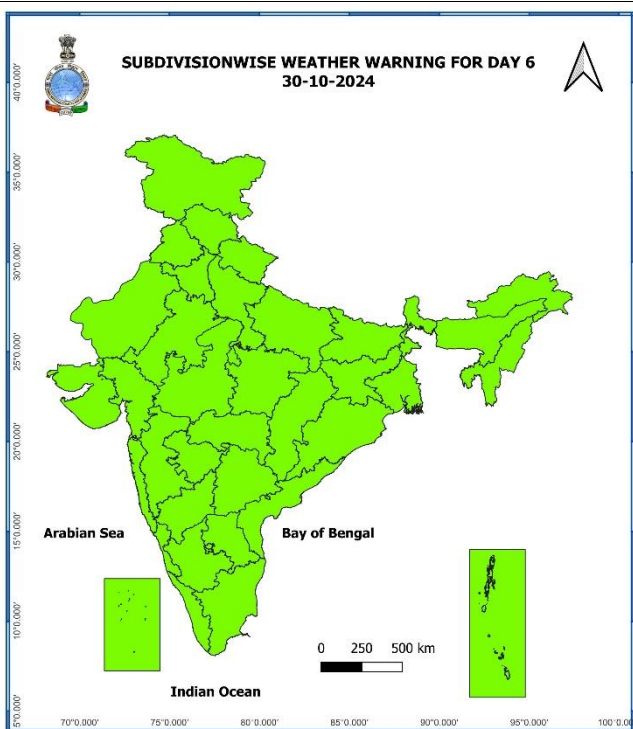
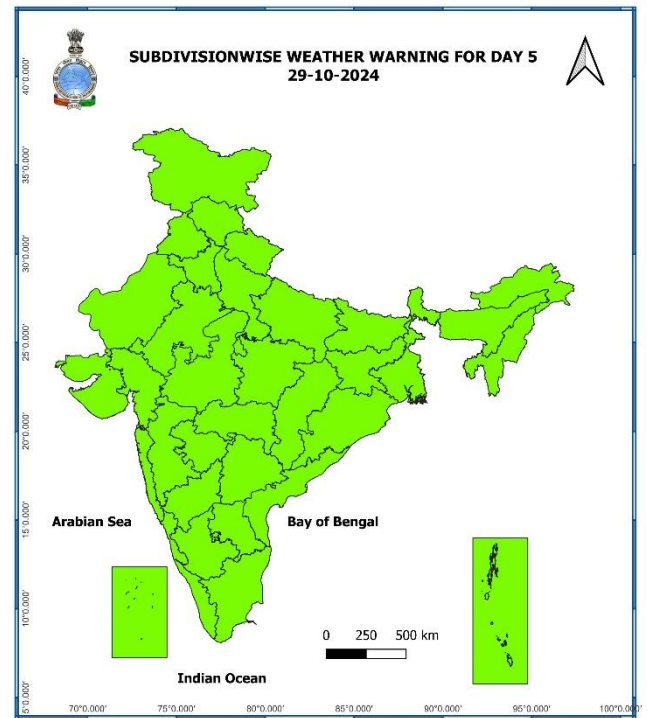
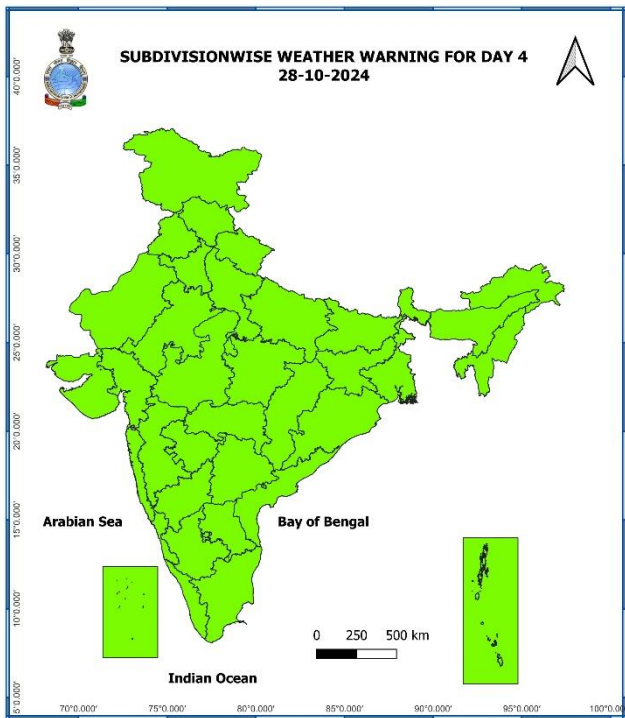
ANNEXURE II

7 Days Rainfall Forecast								
S. No.	Subdivision	25-Oct	26-Oct	27-Oct	28-Oct	29-Oct	30-Oct	31-Oct
		Day 1	Day 2	Day 3	Day 4	Day 5	Day 6	Day 7
1	ANDAMAN & NICOBAR ISLANDS	FWS	FWS	SCT	SCT	SCT	SCT	SCT
2	ARUNACHAL PRADESH	FWS	ISOL	ISOL	DRY	ISOL	ISOL	ISOL
3	ASSAM & MEGHALAYA	FWS	ISOL	ISOL	ISOL	ISOL	ISOL	ISOL
4	NAGALAND, MANIPUR, MIZORAM & TRIPURA	SCT	SCT	ISOL	ISOL	ISOL	ISOL	ISOL
5	SUB-HIMALAYAN WEST BENGAL & SIKKIM	SCT	ISOL	ISOL	ISOL	ISOL	SCT	SCT
6	GANGETIC WEST BENGAL	WS	FWS	SCT	ISOL	ISOL	ISOL	ISOL
7	ODISHA	WS	FWS	SCT	ISOL	ISOL	ISOL	ISOL
8	JHARKHAND	WS	FWS	SCT	ISOL	ISOL	ISOL	ISOL
9	BIHAR	SCT	ISOL	ISOL	ISOL	ISOL	ISOL	ISOL
10	EAST UTTAR PRADESH	ISOL	DRY	DRY	ISOL	ISOL	DRY	DRY
11	WEST UTTAR PRADESH	DRY	DRY	DRY	DRY	DRY	DRY	DRY
12	UTTARAKHAND	DRY	DRY	DRY	DRY	DRY	DRY	DRY
13	HARYANA CHANDIGARH & DELHI	DRY	DRY	DRY	DRY	DRY	DRY	DRY
14	PUNJAB	DRY	DRY	DRY	DRY	DRY	DRY	DRY
15	HIMACHAL PRADESH	DRY	DRY	DRY	DRY	DRY	DRY	DRY
16	JAMMU & KASHMIR AND LADAKH	DRY	DRY	DRY	DRY	ISOL	DRY	DRY
17	WEST RAJASTHAN	DRY	DRY	DRY	DRY	DRY	DRY	DRY
18	EAST RAJASTHAN	DRY	DRY	DRY	DRY	DRY	DRY	DRY
19	WEST MADHYA PRADESH	DRY	DRY	DRY	ISOL	ISOL	ISOL	ISOL
20	EAST MADHYA PRADESH	DRY	DRY	ISOL	ISOL	ISOL	ISOL	ISOL
21	GUJARAT REGION	DRY	DRY	DRY	DRY	DRY	DRY	DRY
22	SAURASHTRA & KUTCH	DRY	DRY	DRY	DRY	DRY	DRY	DRY
23	KONKAN & GOA	DRY	DRY	DRY	ISOL	ISOL	ISOL	ISOL
24	MADHYA MAHARASHTRA	DRY	DRY	ISOL	ISOL	ISOL	ISOL	ISOL
25	MARATHAWADA	DRY	DRY	ISOL	SCT	ISOL	ISOL	ISOL
26	VIDARBHA	DRY	DRY	ISOL	ISOL	ISOL	ISOL	ISOL
27	CHHATTISGARH	ISOL	ISOL	ISOL	ISOL	ISOL	ISOL	ISOL
28	COASTAL ANDHRA PRADESH & YANAM	SCT	SCT	ISOL	ISOL	ISOL	ISOL	ISOL
29	TELANGANA	DRY	DRY	ISOL	ISOL	ISOL	ISOL	ISOL
30	RAYALASEEMA	ISOL	ISOL	ISOL	ISOL	ISOL	ISOL	ISOL
31	TAMILNADU PUDUCHERRY & KARAİKAL	SCT	ISOL	ISOL	ISOL	ISOL	ISOL	ISOL
32	COASTAL KARNATAKA	ISOL	DRY	DRY	SCT	SCT	SCT	SCT
33	NORTH INTERIOR KARNATAKA	DRY	DRY	ISOL	ISOL	SCT	FWS	FWS
34	SOUTH INTERIOR KARNATAKA	SCT	ISOL	ISOL	ISOL	SCT	SCT	SCT
35	KERALA & MAHE	WS	FWS	FWS	SCT	SCT	SCT	SCT
36	LAKSHADWEEP	WS	FWS	FWS	SCT	SCT	SCT	SCT

- As the lead period increases forecast accuracy decreases.

ANNEXURE III





- Action may be taken based on ORANGE AND RED COLOUR warnings.
- Vulnerable regions likely urban and hilly areas action may be initiated for heavy rainfall warning.
- As the lead period increases forecast accuracy decreases.

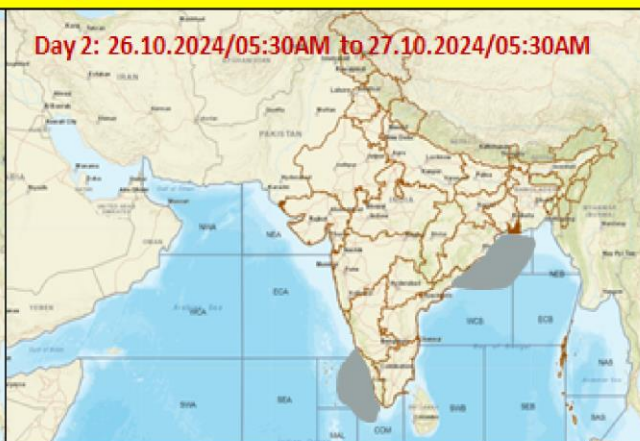


Fishermen Warning Graphics

Day 1: 25.10.2024/11:30AM to 26.10.2024/05:30AM



Day 2: 26.10.2024/05:30AM to 27.10.2024/05:30AM



Day 3: 27.10.2024/05:30AM to 28.10.2024/05:30AM



Day 4: 28.10.2024/05:30AM to 29.10.2024/05:30AM



Day 5: 29.10.2024/05:30AM to 30.10.2024/05:30AM



Squally Weather with wind speed 35-45 kmph gusting to 55 kmph

Squally wind with speed 45-55 kmph gusting to 65 kmph

Squally winds with speed 50-60 kmph gusting to 75 kmph

CS with Gale winds with speed 60-90 kmph gusting to 110 kmph

Fishermen are advised not to venture into the marked areas.

Flash flood guidance:

ANNEXURE (V)

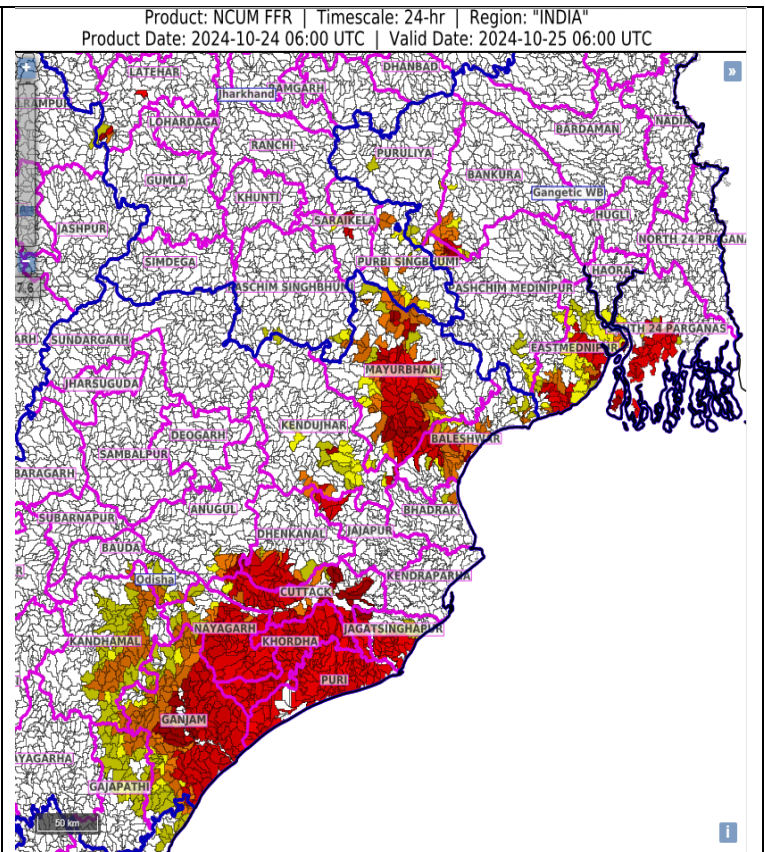
24 hours Outlook for the Flash Flood Risk (FFR) till 1130 IST of 25-10-2024 :

Low to Moderate flash flood risk likely over few watersheds & neighbourhoods of following Met Sub-divisions during next 24 hours.

Odisha - Anugul, Baleshwar, Bauda, Bhadrak, Cuttack, Dhenkanal, Gajapathi, Ganjam, Jagatsinghapur, Jajapur, Kandhamal, Kendujhar, Khordha, Mayurbhanj, Nayagarh and Puri districts.

Gangetic West Bengal - Bankura, Eastmednipur, Pashchim Medinipur and South 24 Parganas districts.

Surface runoff/ Inundation may occur at some fully saturated soils & low-lying areas over area of concern as shown in map due to expected rainfall occurrence in next 24 hours.



Impact due to

- ✓ **Isolated extremely heavy rainfall** very likely over Odisha, Gangetic West Bengal on 25th October.
- ✓ **Isolated heavy to very heavy rainfall** very likely over Kerala & Mahe, Jharkhand on 25th October.
- ✓ Low to Moderate **flash flood risk** likely over few watersheds & neighbourhoods of Odisha and Gangetic West Bengal on 25th October. **ANNEXURE (V)**

Impact Expected

❖ **Impact Expected over districts of Odisha (Baleswar, Bhadrak, Kendrapara, Jagatsinghpur, Mayurbhanj, Keonjhar, Dhenkanal) and West Bengal (East & West Medinipur, South 24 Parganas and Jhargram)**

- Major damage to thatched houses/ huts. Roof tops may blow off. Unattached metal sheets may fly.
- Breaking of tree branches and uprooting of trees. Large dead limbs blown from trees.
- Damage to power and communication lines.
- Major damage to Kutcha and some damage to Pucca roads. Flooding of escape routes.
- Damage to vulnerable structure.
- Major damage to standing crops including banana, papaya, horticultural and vegetable crops due to inundation and wind.
- Damage to embankments/ salt pans.
- Localized Flooding of roads, water logging in low lying areas and closure of underpasses mainly in urban areas of the above region.
- Occasional reduction in visibility due to heavy rainfall.
- Disruption of traffic in major cities and roadways due to water logging in roads and poor visibility due to heavy rain leading to increased travel time and incidents
- Localized Landslides/Mudslides/landslips/mud slips/land sinks/mud sinks.
- Likely disruption of marine and inland water transportation like small boats and trawlers.
- It may lead to riverine flooding in some river catchments (for riverine flooding please visit Webpage of Central Water Commission)

Action Suggested

- ❖ **Action Suggested for districts of Odisha (Baleswar, Bhadrak, Kendrapara, Jagatsinghpur, Mayurbhanj, Keonjhar and Dhenkanal) and West Bengal (East & West Medinipur, South 24 Parganas and Jhargram)**
- Total suspension of fishing operations over Northwest Bay of Bengal till 25th noon.
 - ✓ Fishermen are advised not to venture into Northwest Bay of Bengal and along & off Odisha and West Bengal coasts on 25th October.
- Movement in motor boats unsafe
- Coastal hutment dwellers to be moved to safer places.
- People in affected areas to remain indoors.
- Judicious regulation of onshore/offshore, Port and maritime activities including shipping.
- Judicious regulation of tourism activities in coastal areas.
- Judicious regulation of surface transports including railways and roadways.
- Check for traffic congestion on your route before leaving for your destination.
- Follow any traffic advisories that are issued in this regard.
- Avoid going to areas that face the water logging problems often.
- Avoid staying in vulnerable structure.

Agromet advisories for Heavy Rainfall and Gusty Winds likely over various parts of the country

- Drain out excess water from rice nurseries and fields of rice, maize, pepper and newly planted turmeric. Undertake detrashing and propping of more than five-months-old sugarcane to avoid lodging. Provide support to banana plantations.
- In **Kerala**, drain out excess water from rice, banana, coconut and vegetable fields. Undertake propping in banana plantations and strengthen the vegetable pandals.
- Keep the harvested produce at safer places.
- Provide mechanical support to horticultural crops & staking to vegetables.

Agromet advisories in view of Cyclonic storm “DANA” over North Coastal Odisha

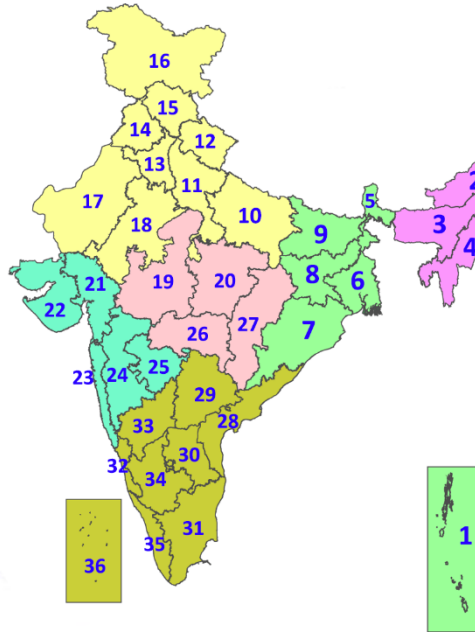
- Immediately shift the harvested produce to safer places.
- In **Odisha**, postpone harvesting of rice, maize, black gram, green gram, groundnut, vegetables and fruits till the cessation of rains. Withhold sowing of pre-*rabi* pulses and winter vegetables. Provide propping in sugarcane by tying leaves from four to five plants together to prevent their lodging.
- In **Gangetic West Bengal**, drain out excess water from *Aman* rice, groundnut, pulses and vegetables. Postpone harvesting of *kharif* rice, vegetables, and fruits till the cessation of rains.
- In **Jharkhand**, postpone harvesting of groundnut, fruits & vegetables. Protect vegetable seedlings in open fields by making shed nets by placing bamboo and polythenes. Withhold sowing of *rabi* crops.
- Make arrangements for adequate drainage to avoid water logging in crop fields.
- Provide mechanical support to young fruit plants and staking in vegetables to prevent their lodging.

Legends & abbreviations:

- ❖ **Heavy Rain:**64.5-115.5mm; **Very Heavy Rain:**115.6-204.4mm; **Extremely Heavy Rain:** >204.4mm.
- ❖ **Obsy:** Observatory; **AWS:** Automatic Weather Station; **ARG:** Automatic Rain Gauge; **dist:** District; **NH:** National Highway; **KVK:** Krishi Vigyan Kendra; **DVC:** Damodar Valley Corporation; **PTO:** Part Time Office, **Aero:** Aerodrome, **IAF:** Indian Air Force.
- ❖ **Region wise classification of meteorological Sub-Divisions:**
 - **Northwest India:** Western Himalayan Region (Jammu-Kashmir-Ladakh-Gilgit-Baltistan-Muzaffarabad, Himachal Pradesh and Uttarakhand); Punjab, Haryana-Chandigarh-Delhi; West Uttar Pradesh, East Uttar Pradesh, West Rajasthan and East Rajasthan.
 - **Central India:** West Madhya Pradesh, East Madhya Pradesh, Vidarbha and Chhattisgarh.
 - **East India:** Bihar, Jharkhand, Sub-Himalayan West Bengal & Sikkim; Gangetic West Bengal, Odisha and Andaman & Nicobar Islands.
 - **Northeast India:** Arunachal Pradesh, Assam & Meghalaya and Nagaland, Manipur, Mizoram & Tripura.
 - **West India:** Gujarat Region, Saurashtra & Kutch, Konkan & Goa, Madhya Maharashtra and Marathawada.
 - **South India:** Coastal Andhra Pradesh & Yanam, Telangana, Rayalaseema, Coastal Karnataka, North Interior Karnataka, South Interior Karnataka, Kerala & Mahe, Tamil Nadu, Puducherry & Karaikal and Lakshadweep.

LEGENDS

1. अंडमान और निकोबार द्वीपसमूह
2. अरुणाचल प्रदेश
3. असम और मेघालय
4. नागालैंड, मणिपुर, मिजोरम और त्रिपुरा
5. उप-हिमालयी पश्चिम बंगाल और सिक्किम
6. गंगीय पश्चिम बंगाल
7. ओडिशा
8. झारखंड
9. बिहार
10. पूर्वी उत्तर प्रदेश
11. पश्चिम उत्तर प्रदेश
12. उत्तराखंड
13. हरियाणा, चंडीगढ़ और दिल्ली
14. पंजाब
15. हिमाचल प्रदेश
16. जम्मू और कश्मीर और लद्दाख
17. पश्चिम राजस्थान
18. पूर्वी राजस्थान
19. पश्चिम मध्य प्रदेश
20. पूर्वी मध्य प्रदेश
21. गुजरात
22. सौराष्ट्र
23. कोंकण और गोवा
24. मध्य महाराष्ट्र
25. मराठवाड़ा
26. विदर्भ
27. छत्तीसगढ़
28. तटीय आंध्र प्रदेश और यनम
29. तेलंगाना
30. रायलसीमा
31. तमिलनाडु, पुडुचेरी और कराईकल
32. तटीय कर्नाटक
33. आंतरिक उत्तरी कर्नाटक
34. आंतरिक दक्षिणी कर्नाटक
35. केरल और माहे
36. लक्षद्वीप



1. Andaman & Nicobar Islands
2. Arunachal Pradesh
3. Assam & Meghalaya
4. Nagaland, Manipur, Mizoram & Tripura
5. Sub-Himalayan West Bengal & Sikkim
6. Gangetic West Bengal
7. Odisha
8. Jharkhand
9. Bihar
10. East Uttar Pradesh
11. West Uttar Pradesh
12. Uttarakhand
13. Haryana, Chandigarh & Delhi
14. Punjab
15. Himachal Pradesh
16. Jammu & Kashmir and Ladakh
17. West Rajasthan
18. East Rajasthan
19. West Madhya Pradesh
20. East Madhya Pradesh
21. Gujarat
22. Saurashtra
23. Konkan & Goa
24. Madhya Maharashtra
25. Marathwada
26. Vidarbha
27. Chhattisgarh
28. Coastal Andhra Pradesh & Yanam
29. Telangana
30. Rayalaseema
31. Tamilnadu, Puducherry & Karaikal
32. Coastal Karnataka
33. North Interior Karnataka
34. South Interior Karnataka
35. Kerala & Mahe
36. Lakshadweep

SPATIAL DISTRIBUTION (% of Stations reporting)

% Stations	Category	% Stations	Category
76-100	Widespread (WS/Most Places)	26-50	Scattered (SCT/A Few Places)
51-75	Fairly Widespread (FWS/Many Places)	1-25	Isolated (ISOL)



Fog



Heavy Snow



Cold Wave



Heavy Rain



Dust Storm



Cold Day



Very Heavy Rain



Heat Wave



Ground Frost



Extremely Heavy Rain



Warm Night



Thunder & Lightning



Hot Day



Hailstorm



Hot & Humid



Dust Raising Winds



Strong Surface Winds

COLOUR CODED WARNING

No Warning (No Action)
Watch (Be Aware)
Alert (Be Prepared To Take Action)
Warning (Take Action)

Probabilistic Forecast

Terms	Probability of Occurrence (%)
Unlikely	< 25
Likely	25 - 50
Very Likely	50 - 75
Most Likely	> 75

* Red colour warning does not mean "Red Alert", Red colour warning means "Take Action".
Forecast and Warning for any day is valid from 0830 hours IST of day till 0830 hours IST of next day.
For more details, kindly visit <https://mausam.imd.gov.in> or contact: 011-2434-4599
(Service to the Nation since 1875)

DEFINITION/CRITERIA

Rain/ Snow *

Heavy: 64.5 to 115.5 mm/cm *
Very Heavy: 115.6 to 204.4 mm/cm*
Extremely Heavy: > 204.4 mm/cm *

Heat Wave

When maximum temperature of a station reaches $\geq 40^\circ \text{C}$ for plains and $\geq 30^\circ \text{C}$ for hilly regions
(a) Based on Departure from normal

Heat Wave: Maximum Temperature Departure from normal 4.5°C to 6.4°C .

Severe Heat Wave: Maximum Temperature Departure from normal $\geq 6.5^\circ \text{C}$

(b). Based on Actual maximum temperature

Heat Wave: When actual maximum temperature $\geq 45^\circ \text{C}$.

Severe Heat Wave: When actual maximum temperature $\geq 47^\circ \text{C}$

(c) Criteria for heat wave for coastal stations

When maximum temperature departure is $> 4.5^\circ \text{C}$ from normal. Heat Wave may be described provided maximum temperature $\geq 37^\circ \text{C}$

Warm Night

When maximum temperature remains 40°C

Warm Night: When minimum temperature departure 4.5°C to 6.4°C .

Severe Warm Night: When minimum temperature departure $> 6.4^\circ \text{C}$.

Cold Wave

When minimum temperature of a station $\leq 10^\circ \text{C}$ for plains and $\leq 0^\circ \text{C}$ for hilly regions.

(a). Based on departure

Cold Wave: Minimum Temperature Departure from normal -4.5°C to -6.4°C .

Severe Cold Wave: Minimum Temperature Departure from normal $\leq -6.5^\circ \text{C}$

(b) Based on actual Minimum Temperature (for Plains only)

Cold Wave: When Minimum Temperature is $\leq 4.0^\circ \text{C}$

Severe Cold Wave: When Minimum Temperature is $\leq 2.0^\circ \text{C}$

(c) For Coastal Stations

When Minimum Temperature departure is $\leq -4.5^\circ \text{C}$ & actual Minimum Temperature is $\leq 15^\circ \text{C}$

Cold Day

When minimum temperature of a station $\leq 10^\circ \text{C}$ for plains and $\leq 0^\circ \text{C}$ for hilly regions

Based on departure

Cold Day: Maximum Temperature Departure from normal -4.5°C to -6.4°C .

Severe Cold Day: Maximum Temperature Departure from normal $\leq -6.5^\circ \text{C}$

Fog

Phenomenon of small droplets suspended in air and the horizontal visibility $< 1 \text{ km}$

Moderate Fog: When the visibility between 500-200 metres

Dense Fog: when the visibility between 50- 200 metres

Very Dense Fog: when the visibility < 50 metres

Thunderstorm

Sudden electrical discharges manifested by a flash of light (Lightning) and a sharp rumbling sound (thunder)

Dust/Sand Storm

An ensemble of particles of dust or sand energetically lifted to great heights by a strong and turbulent wind.

Frost

Ice deposits on ground

Air temperature $\leq 4^\circ \text{C}$ (over Plains)

Squall

A strong wind that rises suddenly, lasts for atleast 1 minute.

Moderate: Wind speed 52-61 kmph

Severe: Wind speed 62-87 kmph

Very Severe: Wind speed > 87 kmph

Sea State

Effect of various waves in the sea over specific area

Rough to very rough: Wind speed 41-62 kmph (22-33 knots) & Wave height 2.5-6 metre

High to very high: Wind speed 63-117 kmph (34-63 knots) & Wave height 6-14 metre

Phenomenal: Wind speed > 117 kmph (> 63 knots) & Wave height > 14 metre

Cyclone

Cyclonic Storm: Wind speed 62-87 kmph (34-47 knots)

Severe Cyclonic Storm: Wind speed 88-117 kmph (48-63 knots)

Very Severe Cyclonic Storm: Wind speed 118-165 kmph (64 - 89 knots)

Extremely Severe Cyclonic Storm: Wind speed 166-220 kmph (90 -119 knots)

Super Cyclone Strom: Wind speed > 220 kmph (> 119 knots)

* Red colour warning does not mean "Red Alert", Red colour warning means "Take Action".
Forecast and Warning for any day is valid from 0830 hours IST of day till 0830 hours IST of next day.
For more details, kindly visit <https://mausam.imd.gov.in> or contact: 011-2434-4599
(Service to the Nation since 1875)