

Government of India
Ministry of Earth Sciences
India Meteorological Department



Press Release

Date: 27th October, 2024

Time of Issue: 1300 hours IST

Subject: No significant weather likely over any part of the country during next one week.

Realised rainfall during past 24 hours till 0830 hours IST of today (Annexure I)

Heavy to very heavy rainfall at isolated places over Kerala; **Heavy rainfall** at isolated places over Lakshadweep and Sub-Himalayan West Bengal.

Weather Systems:

Yesterday's **Well marked Low pressure area** over north Odisha weakened into a **low pressure area** over the same region at 1730 hrs IST of yesterday, the 26th October and became less marked at 0530 hrs IST of today, the 27th October. However, the associated **upper air cyclonic circulation** extending upto middle tropospheric levels lay over the same region. The **upper air cyclonic circulation** lay over coastal Odisha at 0830 hrs IST of today, the 27th October extending upto middle tropospheric levels.

Forecast & Warnings (upto 7 days) (Annexure II & III):

South Peninsular India

- ✓ Light to moderate rainfall at a few places accompanied with isolated thunderstorm and lightning very likely over Tamil Nadu, Puducherry & Karaikal, Kerala & Mahe and Lakshadweep today.
- ✓ **Isolated heavy rainfall** also very likely over Tamil Nadu and Kerala & Mahe on 27th October.

No significant weather likely over rest parts of the country.

For more details, kindly refer National Weather Bulletin:

https://mausam.imd.gov.in/responsive/all_india_forecast_bulletin.php

For District wise warnings refer:

<https://mausam.imd.gov.in/responsive/districtWiseWarningGIS.php>

For Fishermen warnings, kindly refer:

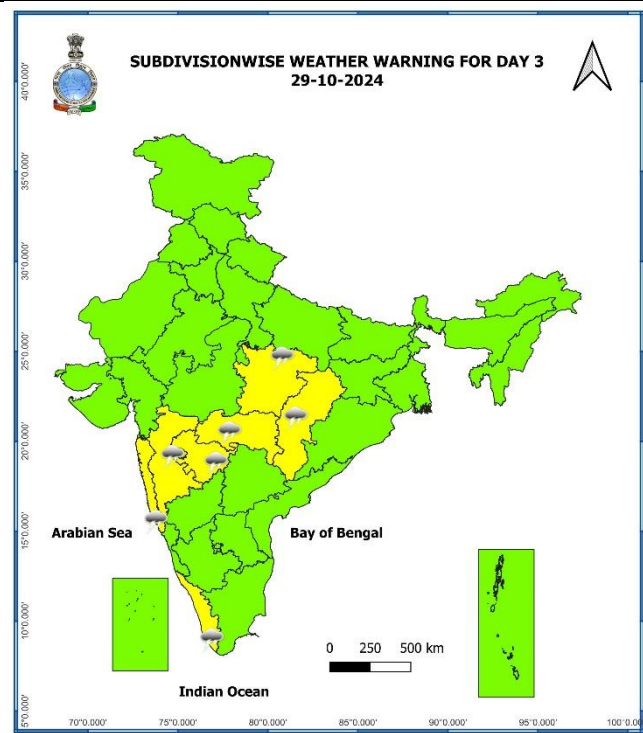
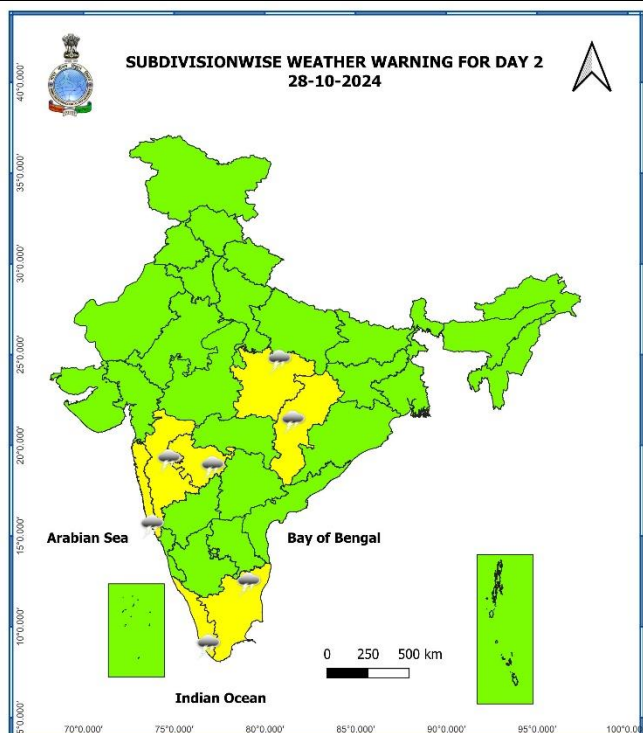
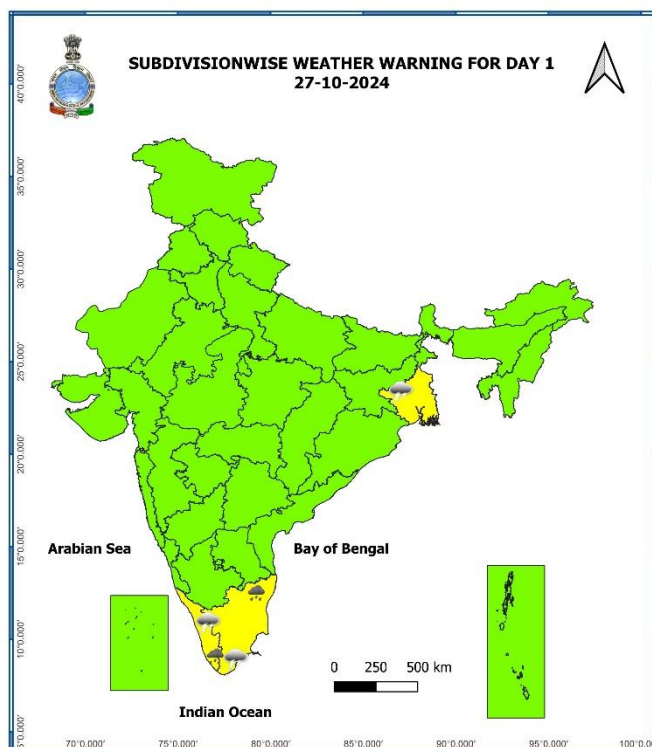
https://rsmcnewdelhi.imd.gov.in/uploads/archive/51/51_bdf575_GRAPHIC.png

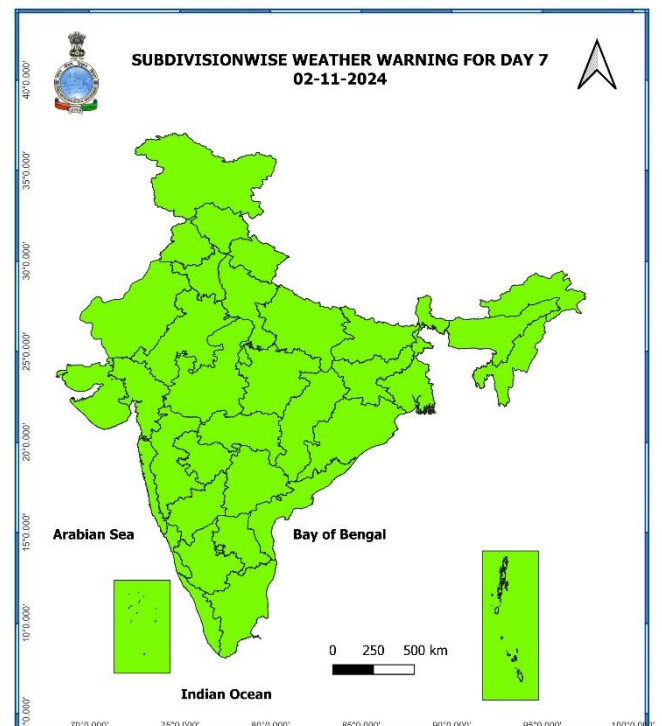
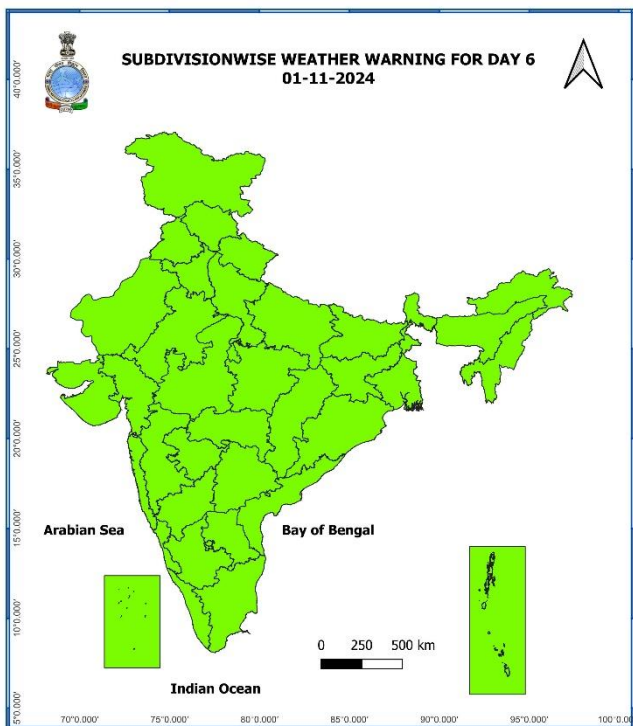
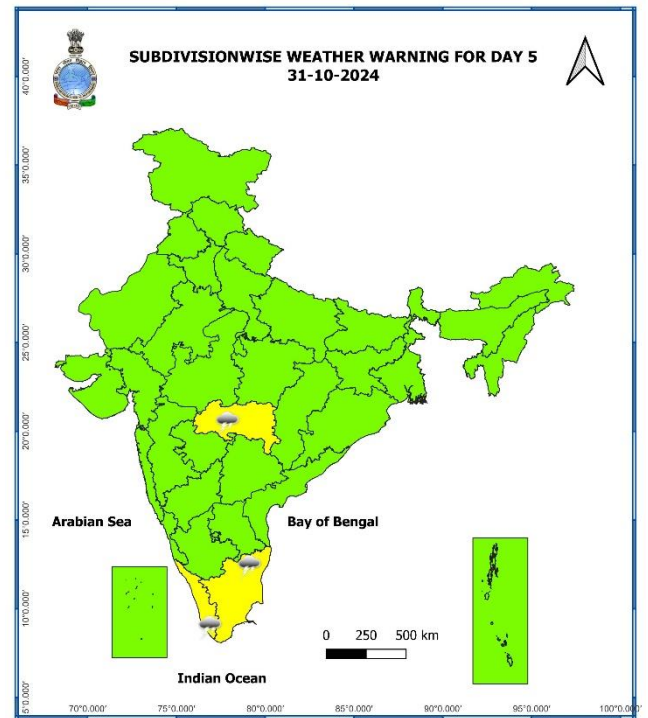
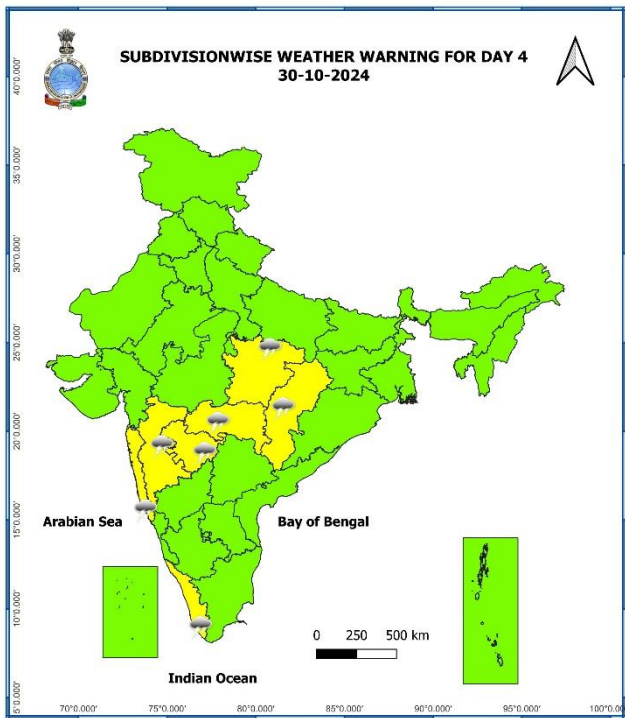
Significant Rainfall recorded during past 24 hours till 0830 hours IST of today 27.10.2024 (in cm):

- ❖ **Kerala:** Peermade To (dist Idukki) 13, Aryankavu (dist Kollam) 6, Kanjirapuzha(dist Palakkad) 5, Vannamada(dist Palakkad) 5, Ayyankunnu(dist Cannur) 4, Idamalayar Dam(dist Ernakulam) 4, Peringalkuthu(dist Thrissur) 4;
- ❖ **Lakshadweep:** Minicoy (dist Lakshadweep) 11;
- ❖ **Sub-Himalayan West Bengal:** Balurghat (dist South Dinajpur) 8;
- ❖ **Gangetic West Bengal:** Purihansa (dist Purulia) 4, Tantloi (dist Birbhum) 4, Kharidwar (dist Purulia) 4;
- ❖ **Jharkhand:** Jamtara Fmo (dist Jamtara) 4, Putki (dist Dhanbad) 4.

7 Days Rainfall Forecast								
S. No.	Subdivision	27-Oct	28-Oct	29-Oct	30-Oct	31-Oct	01-Nov	02-Nov
		Day 1	Day 2	Day 3	Day 4	Day 5	Day 6	Day 7
1	ANDAMAN & NICOBAR ISLANDS	SCT	SCT	SCT	SCT	SCT	SCT	SCT
2	ARUNACHAL PRADESH	ISOL	ISOL	ISOL	ISOL	ISOL	ISOL	ISOL
3	ASSAM & MEGHALAYA	ISOL	ISOL	ISOL	SCT	ISOL	ISOL	ISOL
4	NAGALAND, MANIPUR, MIZORAM & TRIPURA	ISOL	ISOL	ISOL	SCT	SCT	ISOL	SCT
5	SUB-HIMALAYAN WEST BENGAL & SIKKIM	ISOL	ISOL	ISOL	SCT	SCT	ISOL	ISOL
6	GANGETIC WEST BENGAL	SCT	ISOL	ISOL	ISOL	ISOL	ISOL	ISOL
7	ODISHA	SCT	ISOL	ISOL	ISOL	ISOL	ISOL	ISOL
8	JHARKHAND	SCT	ISOL	ISOL	ISOL	ISOL	DRY	DRY
9	BIHAR	ISOL	ISOL	ISOL	ISOL	ISOL	ISOL	ISOL
10	EAST UTTAR PRADESH	ISOL	ISOL	ISOL	DRY	DRY	DRY	DRY
11	WEST UTTAR PRADESH	DRY	DRY	DRY	DRY	DRY	DRY	DRY
12	UTTARAKHAND	DRY	ISOL	ISOL	DRY	DRY	DRY	DRY
13	HARYANA CHANDIGARH & DELHI	DRY	DRY	DRY	DRY	DRY	DRY	DRY
14	PUNJAB	DRY	DRY	ISOL	DRY	DRY	DRY	DRY
15	HIMACHAL PRADESH	DRY	DRY	ISOL	DRY	DRY	DRY	DRY
16	JAMMU & KASHMIR AND LADAKH	DRY	ISOL	SCT	ISOL	DRY	DRY	DRY
17	WEST RAJASTHAN	DRY	DRY	DRY	DRY	DRY	DRY	DRY
18	EAST RAJASTHAN	DRY	DRY	DRY	DRY	DRY	DRY	DRY
19	WEST MADHYA PRADESH	DRY	DRY	ISOL	ISOL	ISOL	DRY	DRY
20	EAST MADHYA PRADESH	ISOL	ISOL	ISOL	ISOL	ISOL	DRY	DRY
21	GUJARAT REGION	DRY	DRY	DRY	DRY	DRY	DRY	DRY
22	SAURASHTRA & KUTCH	DRY	DRY	DRY	DRY	DRY	DRY	DRY
23	KONKAN & GOA	DRY	ISOL	ISOL	ISOL	ISOL	ISOL	ISOL
24	MADHYA MAHARASHTRA	DRY	ISOL	ISOL	ISOL	ISOL	ISOL	ISOL
25	MARATHAWADA	DRY	ISOL	ISOL	ISOL	ISOL	ISOL	ISOL
26	VIDARBHA	DRY	ISOL	ISOL	ISOL	ISOL	ISOL	DRY
27	CHHATTISGARH	ISOL	ISOL	ISOL	ISOL	ISOL	DRY	DRY
28	COASTAL ANDHRA PRADESH & YANAM	ISOL	ISOL	ISOL	ISOL	ISOL	ISOL	ISOL
29	TELANGANA	DRY	DRY	ISOL	ISOL	ISOL	ISOL	ISOL
30	RAYALASEEMA	ISOL	ISOL	ISOL	ISOL	ISOL	ISOL	ISOL
31	TAMILNADU PUDUCHERRY & KARAIKAL	ISOL	ISOL	ISOL	ISOL	SCT	SCT	SCT
32	COASTAL KARNATAKA	ISOL	ISOL	ISOL	ISOL	SCT	SCT	ISOL
33	NORTH INTERIOR KARNATAKA	DRY	DRY	DRY	ISOL	ISOL	ISOL	ISOL
34	SOUTH INTERIOR KARNATAKA	ISOL	ISOL	ISOL	ISOL	ISOL	SCT	SCT
35	KERALA & MAHE	FWS	FWS	FWS	FWS	FWS	FWS	FWS
36	LAKSHADWEEP	SCT	SCT	SCT	SCT	SCT	SCT	SCT

- As the lead period increases forecast accuracy decreases.





- Action may be taken based on ORANGE AND RED COLOUR warnings.
- Vulnerable regions likely urban and hilly areas action may be initiated for heavy rainfall warning.
- As the lead period increases forecast accuracy decreases.

Agromet advisories for Heavy Rainfall likely over Tamil Nadu and Kerala

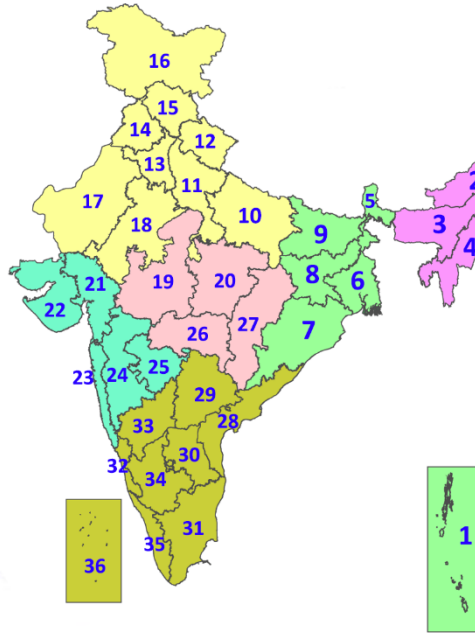
- Drain out excess water from the standing crops in Tamil Nadu and Kerala.
- Keep the harvested produce at safer places.
- Provide mechanical support to horticultural crops and staking to vegetables.

Legends & abbreviations:

- ❖ **Heavy Rain:**64.5-115.5mm; **Very Heavy Rain:**115.6-204.4mm; **Extremely Heavy Rain:** >204.4mm.
- ❖ **Obsy:** Observatory; **AWS:** Automatic Weather Station; **ARG:** Automatic Rain Gauge; **dist:** District; **NH:** National Highway; **KVK:** Krishi Vigyan Kendra; **DVC:** Damodar Valley Corporation; **PTO:** Part Time Office, **Aero:** Aerodrome, **IAF:** Indian Air Force.
- ❖ **Region wise classification of meteorological Sub-Divisions:**
 - **Northwest India:** Western Himalayan Region (Jammu-Kashmir-Ladakh-Gilgit-Baltistan-Muzaffarabad, Himachal Pradesh and Uttarakhand); Punjab, Haryana-Chandigarh-Delhi; West Uttar Pradesh, East Uttar Pradesh, West Rajasthan and East Rajasthan.
 - **Central India:** West Madhya Pradesh, East Madhya Pradesh, Vidarbha and Chhattisgarh.
 - **East India:** Bihar, Jharkhand, Sub-Himalayan West Bengal & Sikkim; Gangetic West Bengal, Odisha and Andaman & Nicobar Islands.
 - **Northeast India:** Arunachal Pradesh, Assam & Meghalaya and Nagaland, Manipur, Mizoram & Tripura.
 - **West India:** Gujarat Region, Saurashtra & Kutch, Konkan & Goa, Madhya Maharashtra and Marathawada.
 - **South India:** Coastal Andhra Pradesh & Yanam, Telangana, Rayalaseema, Coastal Karnataka, North Interior Karnataka, South Interior Karnataka, Kerala & Mahe, Tamil Nadu, Puducherry & Karaikal and Lakshadweep.

LEGENDS

1. अंडमान और निकोबार द्वीपसमूह
2. अरुणाचल प्रदेश
3. असम और मेघालय
4. नागालैंड, मणिपुर, मिजोरम और त्रिपुरा
5. उप-हिमालयी पश्चिम बंगाल और सिक्किम
6. गंगीय पश्चिम बंगाल
7. ओडिशा
8. झारखंड
9. बिहार
10. पूर्वी उत्तर प्रदेश
11. पश्चिम उत्तर प्रदेश
12. उत्तराखंड
13. हरियाणा, चंडीगढ़ और दिल्ली
14. पंजाब
15. हिमाचल प्रदेश
16. जम्मू और कश्मीर और लद्दाख
17. पश्चिम राजस्थान
18. पूर्वी राजस्थान
19. पश्चिम मध्य प्रदेश
20. पूर्वी मध्य प्रदेश
21. गुजरात
22. सौराष्ट्र
23. कोंकण और गोवा
24. मध्य महाराष्ट्र
25. मराठवाड़ा
26. विदर्भ
27. छत्तीसगढ़
28. तटीय आंध्र प्रदेश और यनम
29. तेलंगाना
30. रायलसीमा
31. तमिलनाडु, पुडुचेरी और कराईकल
32. तटीय कर्नाटक
33. आंतरिक उत्तरी कर्नाटक
34. आंतरिक दक्षिणी कर्नाटक
35. केरल और माहे
36. लक्षद्वीप



1. Andaman & Nicobar Islands
2. Arunachal Pradesh
3. Assam & Meghalaya
4. Nagaland, Manipur, Mizoram & Tripura
5. Sub-Himalayan West Bengal & Sikkim
6. Gangetic West Bengal
7. Odisha
8. Jharkhand
9. Bihar
10. East Uttar Pradesh
11. West Uttar Pradesh
12. Uttarakhand
13. Haryana, Chandigarh & Delhi
14. Punjab
15. Himachal Pradesh
16. Jammu & Kashmir and Ladakh
17. West Rajasthan
18. East Rajasthan
19. West Madhya Pradesh
20. East Madhya Pradesh
21. Gujarat
22. Saurashtra
23. Konkan & Goa
24. Madhya Maharashtra
25. Marathwada
26. Vidarbha
27. Chhattisgarh
28. Coastal Andhra Pradesh & Yanam
29. Telangana
30. Rayalaseema
31. Tamilnadu, Puducherry & Karaikal
32. Coastal Karnataka
33. North Interior Karnataka
34. South Interior Karnataka
35. Kerala & Mahe
36. Lakshadweep

SPATIAL DISTRIBUTION (% of Stations reporting)

% Stations	Category	% Stations	Category
76-100	Widespread (WS/Most Places)	26-50	Scattered (SCT/A Few Places)
51-75	Fairly Widespread (FWS/Many Places)	1-25	Isolated (ISOL)



Fog



Heavy Snow



Cold Wave



Heavy Rain



Dust Storm



Cold Day



Very Heavy Rain



Heat Wave



Ground Frost



Extremely Heavy Rain



Warm Night



Thunder & Lightning



Hot Day



Hailstorm



Hot & Humid



Dust Raising Winds



Strong Surface Winds

COLOUR CODED WARNING

No Warning (No Action)
Watch (Be Aware)
Alert (Be Prepared To Take Action)
Warning (Take Action)

Probabilistic Forecast

Terms	Probability of Occurrence (%)
Unlikely	< 25
Likely	25 - 50
Very Likely	50 - 75
Most Likely	> 75

* Red colour warning does not mean "Red Alert", Red colour warning means "Take Action".
Forecast and Warning for any day is valid from 0830 hours IST of day till 0830 hours IST of next day.
For more details, kindly visit <https://mausam.imd.gov.in> or contact: 011-2434-4599
(Service to the Nation since 1875)

DEFINITION/CRITERIA

Rain/ Snow *

Heavy: 64.5 to 115.5 mm/cm *
Very Heavy: 115.6 to 204.4 mm/cm*
Extremely Heavy: > 204.4 mm/cm *

Heat Wave

When maximum temperature of a station reaches $\geq 40^{\circ}\text{C}$ for plains and $\geq 30^{\circ}\text{C}$ for hilly regions
(a) Based on Departure from normal

Heat Wave: Maximum Temperature Departure from normal 4.5°C to 6.4°C .

Severe Heat Wave: Maximum Temperature Departure from normal $\geq 6.5^{\circ}\text{C}$

(b). Based on Actual maximum temperature

Heat Wave: When actual maximum temperature $\geq 45^{\circ}\text{C}$.

Severe Heat Wave: When actual maximum temperature $\geq 47^{\circ}\text{C}$

(c) Criteria for heat wave for coastal stations

When maximum temperature departure is $> 4.5^{\circ}\text{C}$ from normal. Heat Wave may be described provided maximum temperature $\geq 37^{\circ}\text{C}$

Warm Night

When maximum temperature remains 40°C

Warm Night: When minimum temperature departure 4.5°C to 6.4°C .

Severe Warm Night: When minimum temperature departure $> 6.4^{\circ}\text{C}$.

Cold Wave

When minimum temperature of a station $\leq 10^{\circ}\text{C}$ for plains and $\leq 0^{\circ}\text{C}$ for hilly regions.

(a). Based on departure

Cold Wave: Minimum Temperature Departure from normal -4.5°C to -6.4°C .

Severe Cold Wave: Minimum Temperature Departure from normal $\leq -6.5^{\circ}\text{C}$

(b) Based on actual Minimum Temperature (for Plains only)

Cold Wave: When Minimum Temperature is $\leq 4.0^{\circ}\text{C}$

Severe Cold Wave: When Minimum Temperature is $\leq 2.0^{\circ}\text{C}$

(c) For Coastal Stations

When Minimum Temperature departure is $\leq -4.5^{\circ}\text{C}$ & actual Minimum Temperature is $\leq 15^{\circ}\text{C}$

Cold Day

When minimum temperature of a station $\leq 10^{\circ}\text{C}$ for plains and $\leq 0^{\circ}\text{C}$ for hilly regions

Based on departure

Cold Day: Maximum Temperature Departure from normal -4.5°C to -6.4°C .

Severe Cold Day: Maximum Temperature Departure from normal $\leq -6.5^{\circ}\text{C}$

Fog

Phenomenon of small droplets suspended in air and the horizontal visibility $< 1\text{ km}$

Moderate Fog: When the visibility between 500-200 metres

Dense Fog: when the visibility between 50- 200 metres

Very Dense Fog: when the visibility < 50 metres

Thunderstorm

Sudden electrical discharges manifested by a flash of light (Lightning) and a sharp rumbling sound (thunder)

Dust/Sand Storm

An ensemble of particles of dust or sand energetically lifted to great heights by a strong and turbulent wind.

Frost

Ice deposits on ground

Air temperature $\leq 4^{\circ}\text{C}$ (over Plains)

Squall

A strong wind that rises suddenly, lasts for atleast 1 minute.

Moderate: Wind speed 52-61 kmph

Severe: Wind speed 62-87 kmph

Very Severe: Wind speed > 87 kmph

Sea State

Effect of various waves in the sea over specific area

Rough to very rough: Wind speed 41-62 kmph (22-33 knots) & Wave height 2.5-6 metre

High to very high: Wind speed 63-117 kmph (34-63 knots) & Wave height 6-14 metre

Phenomenal: Wind speed > 117 kmph (> 63 knots) & Wave height > 14 metre

Cyclone

Cyclonic Storm: Wind speed 62-87 kmph (34-47 knots)

Severe Cyclonic Storm: Wind speed 88-117 kmph (48-63 knots)

Very Severe Cyclonic Storm: Wind speed 118-165 kmph (64 - 89 knots)

Extremely Severe Cyclonic Storm: Wind speed 166-220 kmph (90 -119 knots)

Super Cyclone Strom: Wind speed > 220 kmph (> 119 knots)

* Red colour warning does not mean "Red Alert", Red colour warning means "Take Action".
Forecast and Warning for any day is valid from 0830 hours IST of day till 0830 hours IST of next day.
For more details, kindly visit <https://mausam.imd.gov.in> or contact: 011-2434-4599
(Service to the Nation since 1875)