



Government of India
Ministry of Earth Sciences



India Meteorological Department

PRESS RELEASE-7

Time of issue: 1500 hours IST

Dated: 26th October, 2024

Sub: Severe Cyclonic storm “DANA” weakened into a Well Marked Low Pressure Area over north Odisha

Yesterday’s cyclonic storm over north coastal Odisha moved nearly westwards, weakened into a deep depression over North Odisha in the afternoon (1430 hours IST) and into a depression in the midnight (2330 hours IST) of same day, i.e. the 25th October, 2024. Thereafter, it moved slightly westwards and gradually weakened into a well marked low pressure area over North Odisha in the early morning (0530 hours IST) and persisted over the same region in the forenoon (0830 hours IST) of today, the 26th October, 2024.

It is likely to weaken further and become insignificant during the next 12 hours.

Warning: No adverse weather is likely under the influence of this system.

Realised Rainfall:

Heavy to very heavy rainfall occurred at a few places with isolated extremely heavy rainfall (≥ 21 cm) over North Odisha and Gangetic West Bengal in past 24 hours ending at 0830 hours IST of today the 26th October. Details are given in Annexure-1.

Observed track of the system observed track of severe cyclonic storm DANA is given in Annexure-2.

This is last update in association with this system. However, regular bulletins shall continue from National Weather Forecasting Centre, New Delhi and Meteorological Centre Bhubaneswar in association with it’s remnant.

Kindly visit www.rsmcnewdelhi.imd.gov.in and www.mausam.imd.gov.in for weather related updates

Contact: Cyclone Warning Division, Office of the Director General of Meteorology, India Meteorological Department, Ministry of Earth Sciences, E-mail: cyclonewarningdivision@gmail.com, Website: rsmcnewdelhi.imd.gov.in, Spatial rainfall distribution: Isolated: <25%, A few: 26-50%, Many: 51-75%, Most: 76-100%, Rainfall amount (mm): Heavy rain: 64.5 – 115.5, Very heavy rain: 115.6 – 204.4, Extremely heavy rain: 204.5 or more.

Annexure-1**24 hours cumulative rainfall (≥ 7 cm) during 0830 hours IST of 25th October to 0830 hours IST of 26th October:**

❖ Odisha: Oupada (dist Balasore) 24, Dhamnagar (dist Bhadrak) 21, Khaira (dist Balasore) 21, Bhandaripokhari (dist Bhadrak) 21, Nawana (dist Mayurbhanj) 19, Bonth (dist Bhadrak) 19, Chandbali (dist Bhadrak) 17, Bhadrak (dist Bhadrak) 16, Rajkanika (dist Kendrapara) 15, Bari (dist Jajpur) 15, Jajpur Pto (dist Jajpur) 14, Jajpur (dist Jajpur) 14, Udala (dist Mayurbhanj) 14, Nilgiri (dist Balasore) 14, Tihidi (dist Bhadrak) 14, Akhuapada (dist Bhadrak) 13, Aul (dist Kendrapara) 12, Binjharpur (dist Jajpur) 11, Remuna (dist Balasore) 11, Kaptipada (dist Mayurbhanj) 10, Soro (dist Balasore) 10, G B Nagar (dist Mayurbhanj) 10, Ghasipura (dist Keonjhar) 9, Basudevpur (dist Bhadrak) 9, Balasore (dist Balasore) 9, Nh5 Gobindpur (dist Balasore) 9, Chandanpur (dist Mayurbhanj) 9, Betanati (dist Mayurbhanj) 8, Balimundali (dist Mayurbhanj) 8, Kusumi (dist Mayurbhanj) 8, Derabis (dist Kendrapara) 8, Bahanga (dist Balasore) 8, Jaipur (dist Balasore) 8, Chandikhol (dist Jajpur) 8, Hatadihi (dist Keonjhar) 7, Samakhunta (dist Mayurbhanj) 7, Anandpur (dist Keonjhar) 7, Nischintakoili (dist Cuttack) 7, Pattamundai (dist Kendrapara) 7, Kendrapara (dist Kendrapara) 7, Kendrapada (dist Kendrapara) 7,

❖ Gangetic West Bengal: Panskura (dist East Medinipur) 20, Nandigram (East Medinipur) 17, Garbeta (West Medinipur) 17, Barrackpur (dist North 24 Parganas) 17, Shyampur Howrah (dist Howrah) 16, Harinkhola (dist Hooghly) 15, Alipore (dist Kolkata) 12, Durgachack (dist East Midnapore) 12, Diamond Harbour (dist South 24 Parganas) 11, Kalyani (dist Nadia) 11, Amtala (dist Murshidabad) 11, Uluberia (dist Howrah) 11, Midnapore(cwc) (dist West Midnapore) 11, Mohanpur (dist West Midnapore) 11, Midnapore (dist West Midnapore) 11, Panagarh (dist Paschim Bardhaman) 11, Burdwan (dist Purba Bardhaman) 10, Kalaikunda (dist West Midnapore) 10, Dum Dum (dist North 24 Parganas) 10, Mo Saltlake (dist North 24 Parganas) 10, Mankar (dist Purba Bardhaman) 9, Gheropara (dist Birbhum) 9, Lalgargh (dist Jhargram) 9, Manteswar (dist Purba Bardhaman) 9, Debagram (dist Nadia) 8, Kharagpur (dist West Midnapore) 8, Canning (dist South 24 Parganas) 8, Sri Niketan (dist Birbhum) 8, Labpur (dist Birbhum) 7, Bankura(cwc) (dist Bankura) 7, Suri (dist Birbhum) 7, Suri (dist Birbhum) 7, Mangalkote (dist Purba Bardhaman) 7,

❖ Jharkhand: Maheshpur (dist Pakur) 8, Pakuria (dist Pakur) 7;



OBSERVED TRACK OF SEVERE CYCLONIC STORM 'DANA' OVER BAY OF BENGAL DURING 21st-26th OCTOBER 2024



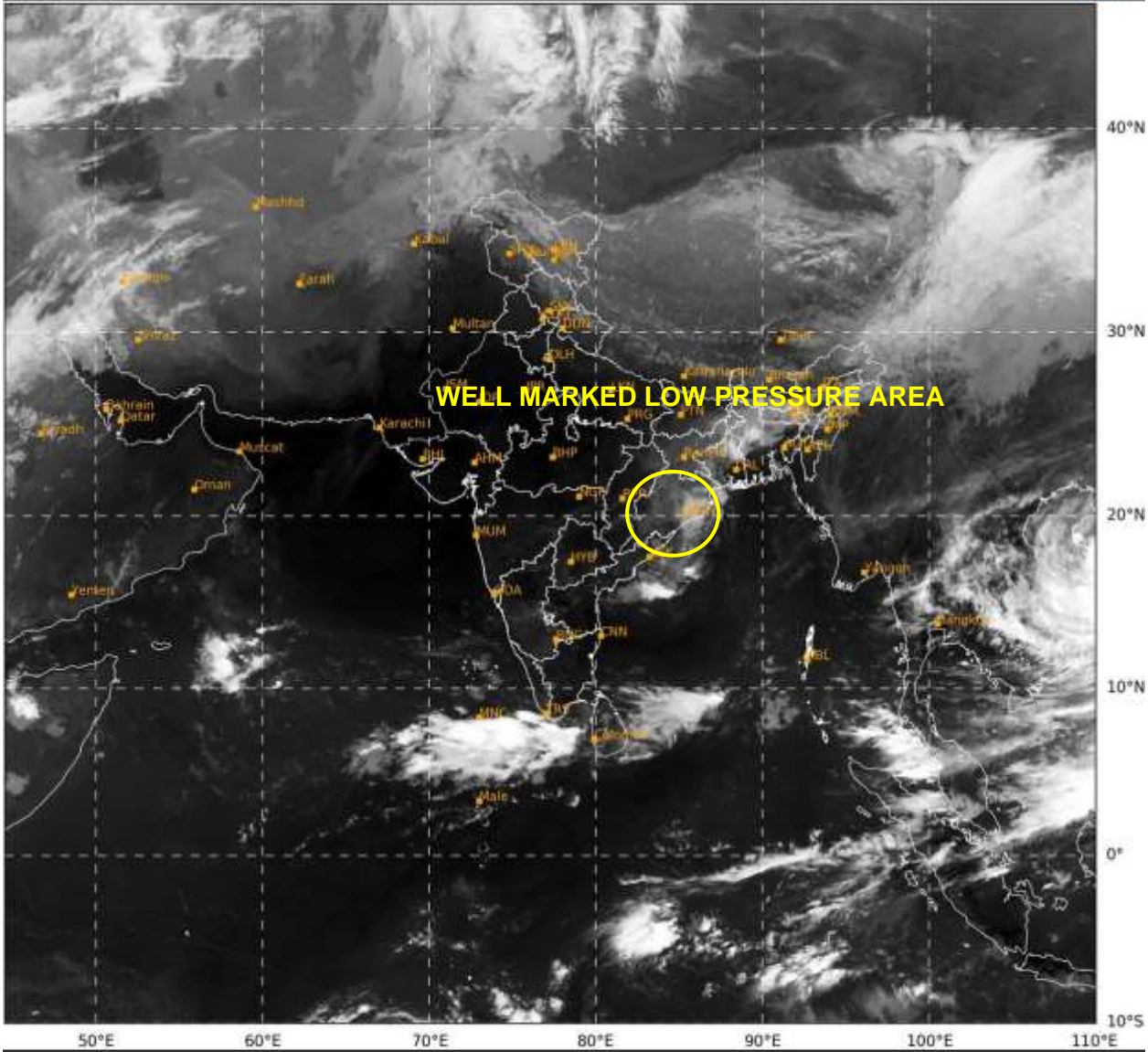
DATE/TIME	: IN UTC
IST	: UTC + 0530
KT	: NAUTICAL MILE S/HOUR = 1.85 KM/HOUR
LPA	: LOW PRESSURE AREA
WML	: WELL MARKED LOW PRESSURE AREA
D	: DEPRESSION (17-27 KT)
DD	: DEEP DEPRESSION (28-33 KT)
CS	: CYCLONIC STORM (34-47 KT)
SCS	: SEVERE CYCLONIC STORM (48-63 KT)
VSCS	: VERY SEVERE CYCLONIC STORM (64-89 KT)
ESCS	: EXTREMELY SEVERE CYCLONIC STORM (90-119 KT)
SuCS	: SUPER CYCLONIC STORM (≥120 KT)

- LESS THAN 34 KT
- 34-47 KT
- ≥ 48 KT
- OBSERVED TRACK
- FORECAST TRACK
- CONE OF UNCERTAINTY

Contact: Cyclone Warning Division, Office of the Director General of Meteorology, India Meteorological Department, Ministry of Earth Sciences, [E-mail: cyclonewarningdivision@gmail.com](mailto:cyclonewarningdivision@gmail.com), Website: rsmcnewdelhi.imd.gov.in, Spatial rainfall distribution: Isolated: <25%, A few: 26-50%, Many: 51-75%, Most: 76-100%, Rainfall amount (mm): Heavy rain: 64.5 – 115.5, Very heavy rain: 115.6 – 204.4, Extremely heavy rain: 204.5 or more.

SAT : INSAT-3DR IMG
IMG_TIR1 10.8 um
LIC Mercator

26-10-2024/(0315 to 0342) GMT
26-10-2024/(0845 to 0912) IST



IMD, DELHI

Contact: Cyclone Warning Division, Office of the Director General of Meteorology, India Meteorological Department, Ministry of Earth Sciences, [E-mail: cyclonewarningdivision@gmail.com](mailto:cyclonewarningdivision@gmail.com), Website: rsmcnewdelhi.imd.gov.in, Spatial rainfall distribution: Isolated: <25%, A few: 26-50%, Many: 51-75%, Most: 76-100%, Rainfall amount (mm): Heavy rain: 64.5 – 115.5, Very heavy rain: 115.6 – 204.4, Extremely heavy rain: 204.5 or more.