



**Government of India**  
**Ministry of Earth Sciences**



**India Meteorological Department**

## **PRESS RELEASE-8**

**Time of issue: 1630 hours IST**

**Dated: 01<sup>st</sup> December, 2024**

**Sub: Cyclonic Storm “FENGAL” [pronounced as FEINJAL] over north coastal Tamil Nadu & Puducherry (Cyclone Warning: Red Message for North Tamil Nadu, Puducherry and adjoining south Andhra Pradesh)**

Yesterday’s cyclonic storm “FENGAL” [pronounced as FEINJAL] over Southwest Bay of Bengal moved initially westwards till evening, then west-southwestwards and crossed North Tamil Nadu & Puducherry coasts near latitude 12.05°N and longitude 79.9°E, close to Puducherry, between 2230 hrs IST and 2330 hrs IST of yesterday, the 30<sup>th</sup> November 2024 as a cyclonic storm with a wind speed of 70-80 kmph gusting to 90 kmph. Thereafter, it remained practically stationary during past 12 hours, weakened into a deep depression and lay centered at 1130 hours IST of today, the 1<sup>st</sup> December 2024 over the same region near latitude 12.0°N and longitude 79.8°E, close to Puducherry, about 30 km north of Cuddalore, 40 km east of Villupuram and 120 km south-southwest of Chennai.

It is likely to move westwards very slowly and weaken gradually into a depression over north Tamil Nadu during the next 12 hours.

The system is being continuously monitored by the Doppler Weather Radar at Karaikal and Chennai. Forecast track and intensity are given in the following table:

<b>Date/ Time (IST)</b>	<b>Position (Lat. °N/ long. °E)</b>	<b>Maximum sustained surface wind speed (Kmph)</b>	<b>Category of cyclonic disturbance</b>
01.12.24/1130	12.0/79.8	55-65 gusting to 75	Deep Depression
01.12.24/1730	12.0/79.6	50-60 gusting to 70	Deep Depression
01.12.24/2330	12.0/79.4	40-50 gusting to 60	Depression

### **Warnings:**

#### **(i) Rainfall Warning:**

**Tamil Nadu & Puducherry:** Light to moderate rainfall at most places with **heavy to very heavy rainfall at a few places and extremely heavy rainfall ( $\geq 21$  cm)** at isolated places is very likely over North Tamil Nadu & Puducherry on 1<sup>st</sup> December. However, rainfall will decrease gradually along the north coastal Tamil Nadu and increase over North interior Tamil Nadu during the same period. Light to moderate rainfall at many places with **heavy to very heavy rainfall** at isolated places is very likely over interior Tamil Nadu on 2<sup>nd</sup> December & **heavy rainfall** at isolated places over the interior districts of Tamil Nadu adjoining to Kerala on 03<sup>rd</sup> December.

**South Coastal Andhra Pradesh:** Light to moderate rainfall at many places with **heavy rainfall** at isolated places is very likely on 01<sup>st</sup> December.

**Rayalaseema:** Light to moderate rainfall at many places with **heavy rainfall** at isolated places is very likely on 01<sup>st</sup> and 2<sup>nd</sup> December.

**Contact:** Cyclone Warning Division, Office of the Director General of Meteorology, India Meteorological Department, Ministry of Earth Sciences, E-mail: [cyclonewarningdivision@gmail.com](mailto:cyclonewarningdivision@gmail.com), Website: [rsmcnewdelhi.imd.gov.in](http://rsmcnewdelhi.imd.gov.in), Spatial rainfall distribution: Isolated: <25%, A few: 26-50%, Many: 51-75%, Most: 76-100%, Rainfall amount (mm): Heavy rain: 64.5 – 115.5, Very heavy rain: 115.6 – 204.4, Extremely heavy rain: 204.5 or more.

**South Interior Karnataka:** Light to moderate rainfall at many places with **heavy rainfall** at isolated places is very likely on 01<sup>st</sup> & 3<sup>rd</sup> December and heavy to very heavy rainfall at isolated places is very likely on 2<sup>nd</sup> December.

**Coastal Karnataka:** Light to moderate rainfall at many places with **heavy rainfall** at isolated places is very likely on 2<sup>nd</sup> and 3<sup>rd</sup> December.

**Kerala:** Light to moderate rainfall at a few places with isolated heavy to very heavy rainfall is likely on 1<sup>st</sup> December. Rainfall activity will increase with light to moderate rainfall at most places with **heavy to very heavy rainfall** at a few places & **extremely heavy** at isolated places on 2<sup>nd</sup> and heavy rainfall at isolated places on 3<sup>rd</sup> December.

**(ii) Wind warning:**

- **Southwest Bay of Bengal and along & off North Tamil Nadu – Puducherry coasts:** Squally wind speed reaching 55-65 kmph gusting to 75 kmph is prevailing. It is likely to decrease becoming squally wind speed reaching 40-50 kmph gusting to 60 kmph by midnight of 1<sup>st</sup> December and decrease gradually thereafter.
- **Adjoining areas of westcentral Bay of Bengal and along & off South Andhra Pradesh coast:** Squally wind speed reaching 40-50 kmph gusting to 60 kmph is likely to prevail over adjoining areas of westcentral Bay of Bengal till evening of 1<sup>st</sup> December. It is likely to decrease thereafter.
- **Along & off South Tamil Nadu coast and Gulf of Mannar:** Squally wind speed reaching 35-45 kmph gusting to 55 kmph is likely to prevail till evening of 1<sup>st</sup> December and gradually decrease thereafter.

**(iii) Sea condition:**

Very Rough to Rough Sea conditions is likely to prevail over southwest Bay of Bengal adjoining areas of westcentral Bay of Bengal, and along & off North Tamil Nadu-Puducherry coasts, and adjoining areas of westcentral Bay of Bengal, Gulf of Mannar, along & off South Andhra Pradesh and north Sri Lanka coasts till midnight of today, the 1<sup>st</sup> December. It will gradually improve thereafter.

**(iv) Fisherman warning (Graphics Attached):**

- Total suspension of fishing operations till evening of 1<sup>st</sup> December over southwest and adjoining westcentral Bay of Bengal.
- Fishermen are advised not venture into southwest Bay of Bengal adjoining areas of westcentral Bay of Bengal, Gulf of Mannar and along & off Tamil Nadu-Puducherry, South Andhra Pradesh and North Sri Lanka coasts till 1<sup>st</sup> December.

**(iv) Flash Flood Guidance (Graphics Attached):**

**24 hours Outlook for the Flash Flood Risk (FFR) till 0530 IST of 02-12-2024:**

**Moderate to High flash flood** risk likely over a few watersheds as mentioned below during next 24 hours:

**Tamil Nadu and Puducherry**– Karaikal, Puducherry, Villupuram, Ariyalur, Cuddalore, Chennai, Dharmapuri, Krishnagiri, Namakkal, Perambalur, Salem, Thanjavur, Tiruchirappalli, Tiruvannamalai, Vellore districts.

**South Coastal Andhra Pradesh**–Thirupati and Nellore districts.

**Rayalaseema**- Chittoor and Kadapa districts.

Surface runoff/ Inundation may occur at some fully saturated soils & low-lying areas over Area of Concern (AoC) as shown in map due to expected rainfall during next 24 hours.

**(vii) Impact Expected [over coastal districts of North Tamil Nadu (Tiruvallur, Chennai, Chengalpattu, Puducherry, Cuddalore, Mayiladuthurai, Nagappattinam, Dharmapuri, Krishnagiri and Villupuram) and Andhra Pradesh (Tirupati, Nellore, Kadapa)]**

**Contact:** Cyclone Warning Division, Office of the Director General of Meteorology, India Meteorological Department, Ministry of Earth Sciences, E-mail:[cyclonewarningdivision@gmail.com](mailto:cyclonewarningdivision@gmail.com), Website: [rsmcnewdelhi.imd.gov.in](http://rsmcnewdelhi.imd.gov.in), Spatial rainfall distribution: Isolated: <25%, A few: 26-50%, Many: 51-75%, Most: 76-100%, Rainfall amount (mm): Heavy rain: 64.5 – 115.5, Very heavy rain: 115.6 – 204.4, Extremely heavy rain: 204.5 or more.

- Damage to thatched huts.
- Minor damage to power and communication lines due to breaking of branches.
- Major damage to Kutchha and minor damage to Pucca roads.
- Some damage to paddy crops, banana, papaya, drum sticks (moringa) trees and orchards.
- Sea water inundation in low lying areas after erosion of Kutchha embankments.
- Localized Flooding of roads, water logging in low lying areas and closure of underpasses mainly in urban areas of the above region.
- Occasional reduction in visibility due to heavy rainfall.
- Disruption of traffic in major cities due to water logging in roads leading to increased travel time.
- Damage to horticulture and standing crops including vegetable crops in some areas due to inundation.
- Breaking of tree branches, uprooting of small trees including banana, papaya and drumstick.

**(viii) Action Suggested:**

- Total suspension of fishing operations till evening of 1<sup>st</sup> December.
- Fishermen are advised not to venture into southwest Bay of Bengal adjoining areas of westcentral Bay of Bengal, Gulf of Mannar and along & off Tamil Nadu-Puducherry, South Andhra Pradesh and North Sri Lanka coasts till 1<sup>st</sup> December.
- The ships plying over the area need to be regulated.
- People should stay in safe places till evening of 1<sup>st</sup> December evening in the districts near the centre of cyclone.
- Check for traffic congestion on your route before leaving for your destination.
- Follow any traffic advisories that are issued in this regard.
- Avoid going to areas that face the water logging problems often.
- Special care may be taken for fishing ponds and poultry over coastal areas.
- Avoid staying in vulnerable structure.

**(ix) Agromet advisories:**

Provide adequate drainage facilities for the removal of excess water from rice, cotton, sugarcane, turmeric, tobacco and vegetable fields, coconut and banana orchards. Provide mechanical support to banana plants to prevent lodging.

- Make arrangements to drain out excess water from the standing crop fields and fruit orchards.
- Harvest the matured crops and keep it in safe place.
- Provide mechanical support to horticultural crops and staking to vegetable crops.

***Next Press Release will be issued at 1430 hours IST of tomorrow, the 2<sup>nd</sup> December 2024.***

**Contact: Cyclone Warning Division, Office of the Director General of Meteorology, India Meteorological Department, Ministry of Earth Sciences, E-mail: [cyclonewarningdivision@gmail.com](mailto:cyclonewarningdivision@gmail.com), Website: [rsmcnewdelhi.imd.gov.in](http://rsmcnewdelhi.imd.gov.in), Spatial rainfall distribution: Isolated: <25%, A few: 26-50%, Many: 51-75%, Most: 76-100%, Rainfall amount (mm): Heavy rain: 64.5 – 115.5, Very heavy rain: 115.6 – 204.4, Extremely heavy rain: 204.5 or more.**

**24 hours accumulated realised rainfall ending at 0830 hours IST of today, the 1<sup>st</sup> December**

**Tamil Nadu:** Mylam AWS (dist Villupuram) 51, Puducherry AWS (dist Puducherry) 49, Puducherry (dist Puducherry) 48, Patthukannu (dist Puducherry) 45, Thirukkanur (dist Puducherry) 43, Puducherry Town (dist Puducherry) 40, Tindivanam (dist Villupuram) 37, RSCL-2 Nemoor (dist Villupuram) 35, Bahour (dist Puducherry), RSCL Vallam (dist Villupuram) 32 each, RSCL-3 Semmedu (dist Villupuram) 31, RSCL-2 Valavanur (dist Villupuram), RSCL-2 Koliyanur (dist Villupuram) 28 each, Vilupuram (dist Villupuram) 27, Gingee (dist Villupuram), RSCL-2 Kedar (dist Villupuram) 25 each, RSCL-3 Valathy (dist Villupuram), Vanur (dist Villupuram), RSCL-2 Soorapattu (dist Villupuram), Marakkanam (dist Villupuram) 24 each, Cuddalore (dist Cuddalore), RSCL-3 Avalurpettai (dist Villupuram) 23 each, Tiruvannamalai AWS (dist Tiruvannamalai), Chetpet (dist Tiruvannamalai) 22 each, Jamunamarathur (dist Tiruvannamalai), Cuddalore Collector Office (dist Cuddalore), RSCL-3 Anandhapuram (dist Villupuram), Uthiramerur (dist Kancheepuram) 21 each, Maduranthagam (dist Chengalpattu), Keelpennathur (dist Tiruvannamalai), Gummidipoondi (dist Tiruvallur), Chengalpattu (dist Chengalpattu) 20 each, Avadi (dist Tiruvallur), Thirukalukundram (dist Chengalpattu), Vanamadevi (dist Cuddalore) 19 each, Tiruttani (dist Tiruvallur), Arani (dist Tiruvannamalai), BASL Mugaiyur (dist Villupuram), Arcot (dist Ranipet) 18 each, SRC Kudithangi (dist Cuddalore), Cheyyar ARG (dist Tiruvannamalai) 17 each, Thirukoilur ARG (dist Kallakurichi), Vandavasi (dist Tiruvannamalai), Thamaraiyakkam (dist Tiruvallur), Kalasapakkam (dist Tiruvannamalai), RSCL-2 Kanjanur (dist Villupuram), Tambaram (dist Chengalpattu) 16 each, Thandarampettai (dist Tiruvannamalai), Kallakurichi (dist Kallakurichi), Kancheepuram (dist Kancheepuram), Wallajah (dist Ranipet), Cheyyur (dist Chengalpattu), MGR Nagar (dist Chennai), Ayanavaram Taluk Office (dist Chennai), RSCL-2 Mundiampakkam (dist Villupuram), Kalavai PWD (dist Ranipet) 15 each, Yercaud (dist Salem), Cheyyar (dist Tiruvannamalai), Arakonam (dist Ranipet), Sholingur (dist Ranipet), Vembakkam (dist Tiruvannamalai), Panruti (dist Cuddalore), Pallipattu (dist Tiruvallur), Kallakurichi ARG (dist Kallakurichi), Mahabalipuram (dist Chengalpattu), Jaya Engg College AWS (dist Tiruvallur) 14 each, Koratur (dist Tiruvallur), Palar Anicut (dist Ranipet), Uthukottai (dist Tiruvallur), Chembarabakkam\_REV (dist Tiruvallur), Kaveripakkam (dist Ranipet), R.K.Pet ARG (dist Tiruvallur), DSCL Madampoondi (dist Kallakurichi), Sriperumbudur (dist Kancheepuram), Panapakkam (dist Ranipet), Walajabad (dist Kancheepuram), Red Hills (dist Tiruvallur), Poondi (dist Tiruvallur), BASL Manampoondi (dist Villupuram), R.K.Pet (dist Tiruvallur), Minnal (dist Ranipet), Tiruvallur (dist Tiruvallur) 13 each, Zone 12 Meenambakkam (dist Chennai), Ambathur Rev (dist Chennai), Valasaravakkam (dist Chennai), Cholavaram (dist Tiruvallur), DSCL Thirupalapandal (dist Kallakurichi), DSCL Kalayanallur (dist Kallakurichi), LMOIS Kolapakkam ARG (dist Chengalpattu), Zone 07 Ayapakkam (dist Chennai), Ranipet AWS (dist Ranipet), Thirukoilur (dist Kallakurichi), Zone 11 Maduravoyal (dist Chennai), Tiruttani AWS (dist Tiruvallur), Ambattur MW (dist Chennai) 12 each, Chennai (AP) (dist Chennai), Tiruttani PTO (dist Tiruvallur), Alandur (dist Chennai), BASL Manalurpet (dist Kallakurichi), KCS Mill-1 Ariyalur (dist Kallakurichi), BASL Vengur (dist Kallakurichi), Meenambakkam AWS (dist Chennai), Zone 11 Valasaravakkam (dist Chennai), Anna Nagar (dist Chennai), Ammoor (Walajah Railway) (dist Ranipet), Nctpl Marg ECR AWS (dist Chengalpattu), Vellore (dist Vellore), Thiru-Vi-Ka Nagar (dist Chennai), Ponneri (dist Tiruvallur), Chennai Collector Office (dist Chennai), Kattumayilur (dist Cuddalore), Sankarapuram (dist Kallakurichi), Perambur (dist Chennai), Chennai(N) AWS (dist Chennai), Kundrathur (dist Kancheepuram), Zone 10 Vadapalani (dist Chennai), ACS Medical College ARG (dist Kancheepuram), Ulundurpet (dist Kallakurichi), Sholinganallur (dist Chennai), Kodambakkam (dist Chennai), DSCL Virugavoor (dist Kallakurichi), Chennai(N) (dist Chennai) 11 each, Alangayam (dist Tirupathur), DGP Office (dist Chennai), Poonamallee (dist Tiruvallur), Ponnai Dam (dist Vellore), CD Hospital Tondiarpet (dist Chennai), Thiruvalangadu (dist Tiruvallur), Zone 12 D156 Mugalivakkam (dist Chennai), Ariyalur Camp Area (dist Kallakurichi), DSCL Sulangurichi (dist Kallakurichi), Zone 18 Aminjikarai (dist Chennai), DSCL Thiyagadurgam (dist Kallakurichi), DSCL Keelpadi (dist Kallakurichi), Zone 05 Basinbridge (dist Chennai), Ammundi (dist Vellore), Zone 14 Madipakkam (dist Chennai) 10 each,

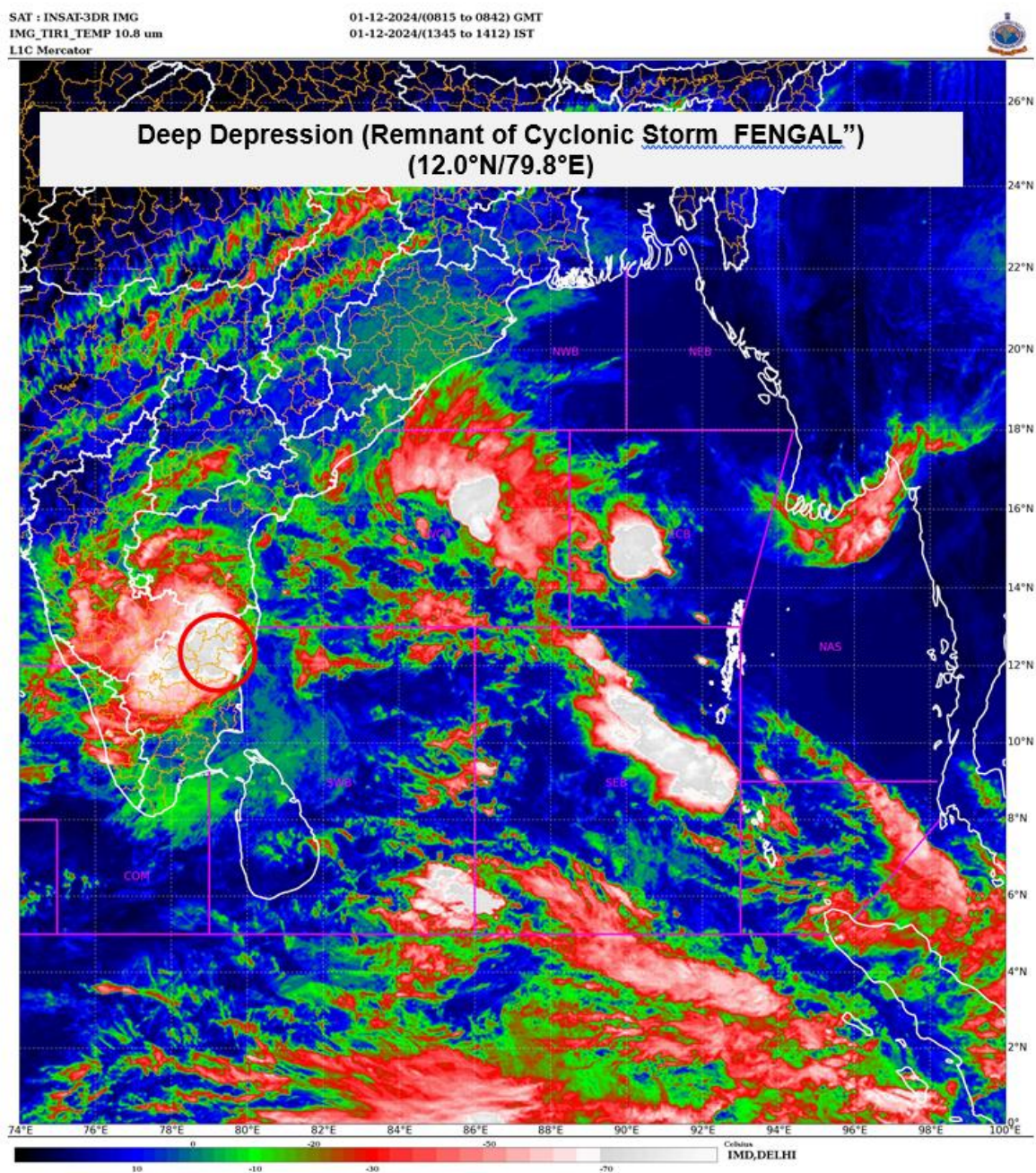
**Kerala:** Ulanad (Pathanamthitta district) 9, Enadimangalam (Pathanamthitta district) 7

**Contact:** Cyclone Warning Division, Office of the Director General of Meteorology, India Meteorological Department, Ministry of Earth Sciences, E-mail: [cyclonewarningdivision@gmail.com](mailto:cyclonewarningdivision@gmail.com), Website: [rsmcnewdelhi.imd.gov.in](http://rsmcnewdelhi.imd.gov.in), Spatial rainfall distribution: Isolated: <25%, A few: 26-50%, Many: 51-75%, Most: 76-100%, Rainfall amount (mm): Heavy rain: 64.5 – 115.5, Very heavy rain: 115.6 – 204.4, Extremely heavy rain: 204.5 or more.



**Rayalaseema:** Sullurpeta (dist Tirupati) 17, Tada (dist Tirupati) 15, Nagari (dist Chittoor) 13, Kodur (dist Ysr District) 12, Satyavedu (dist Tirupati) 11, Venkatagiri (dist Tirupati) 11, Palasamudram (dist Chittoor) 10, Thottambedu (dist Tirupati) 9, Srikalahasti (dist Tirupati) 9, Tirupati Aero (dist Tirupati) 9,

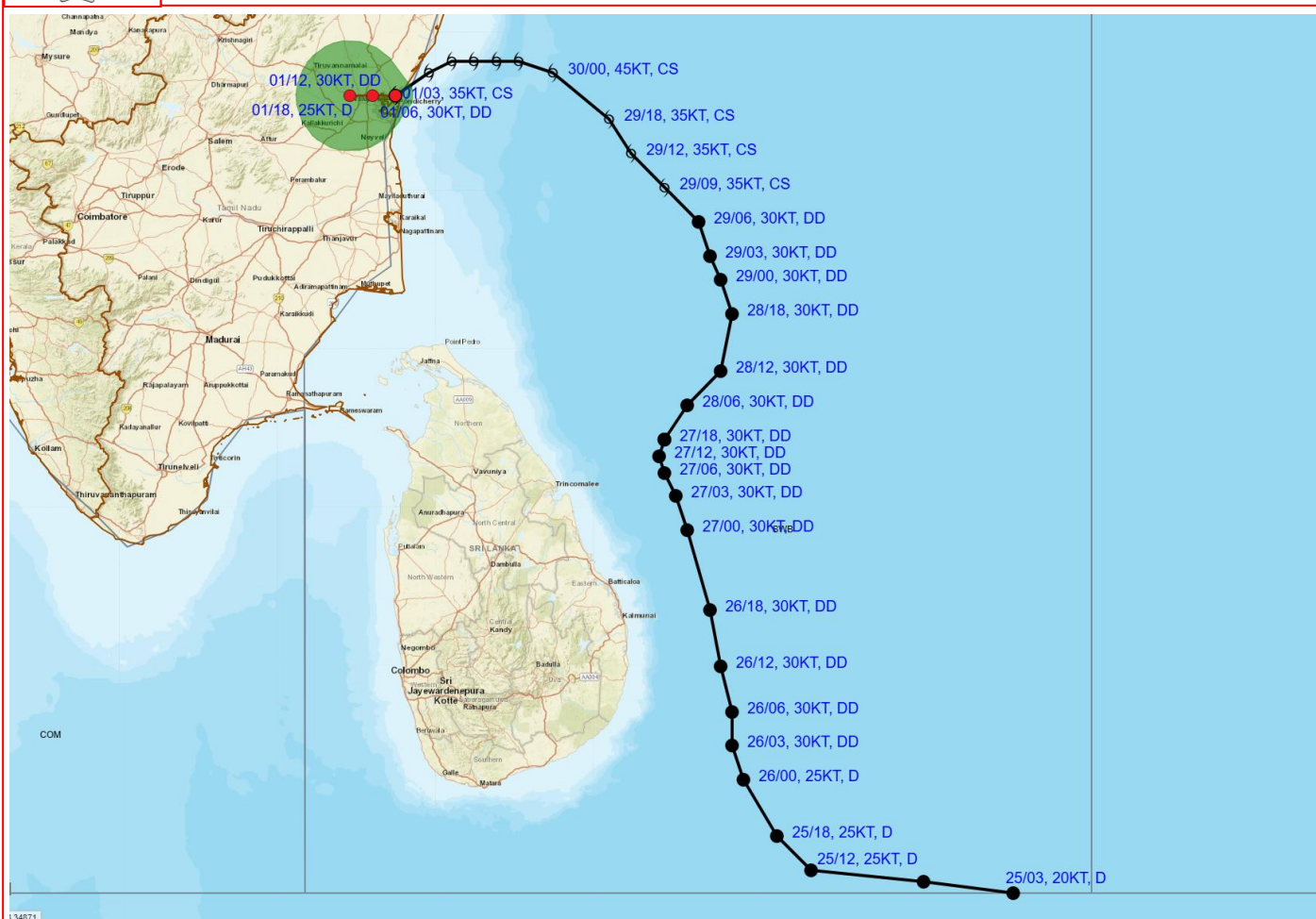
**Coastal Andhra Pradesh:** Rapur (dist Spsr Nellore) 9, Nellore (dist Spsr Nellore) 8,



**Contact:** Cyclone Warning Division, Office of the Director General of Meteorology, India Meteorological Department, Ministry of Earth Sciences, E-mail: [cyclonewarningdivision@gmail.com](mailto:cyclonewarningdivision@gmail.com), Website: [rsmcnewdelhi.imd.gov.in](http://rsmcnewdelhi.imd.gov.in), Spatial rainfall distribution: Isolated: <25%, A few: 26-50%, Many: 51-75%, Most: 76-100%, Rainfall amount (mm): Heavy rain: 64.5 – 115.5, Very heavy rain: 115.6 – 204.4, Extremely heavy rain: 204.5 or more.



**OBSERVED AND FORECAST TRACK ALONG WITH CONE OF UNCERTAINTY OF DEEP DEPRESSION (REMNANT OF CYCLONIC STORM "FENGAL") OVER NORTH COASTAL TAMIL NADU AND PUDUCHERRY BASED ON 0600 UTC (1130 HRS. IST) OF 01<sup>st</sup> DECEMBER, 2024.**



DATE/TIME : IN UTC  
IST : UTC + 0530  
KT : NAUTICAL MILE/ HOUR = 1.85 KM/HOUR  
LPA : LOW PRESSURE AREA  
WML : WELL MARKED LOW PRESSURE AREA  
D : DEPRESSION (17-27 KT)  
DD : DEEP DEPRESSION (28-33 KT)  
CS : CYCLONIC STORM (34-47 KT)  
SCS : SEVERE CYCLONIC STORM (48-63 KT)  
VSCS : VERY SEVERE CYCLONIC STORM (64-89 KT)  
ECS : EXTREMELY SEVERE CYCLONIC STORM (90-119 KT)  
SuCS : SUPER CYCLONIC STORM (≥120 KT)

● LESS THAN 34 KT  
○ 34-47 KT  
○ ≥ 48 KT  
— OBSERVED TRACK  
— FORECAST TRACK  
● CONE OF UNCERTAINTY

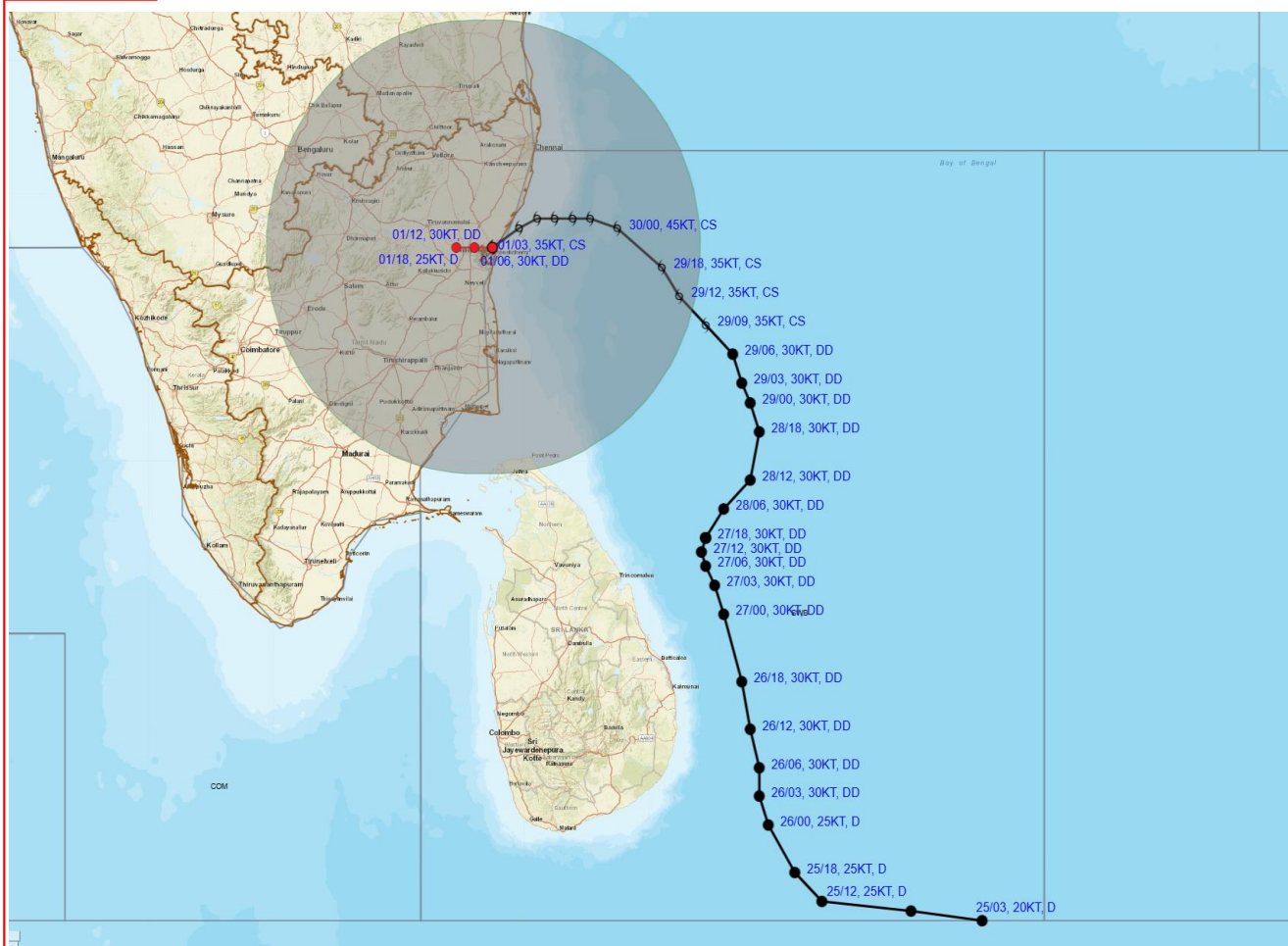
Forecast	DISTANCE (KM) AND DIRECTION FROM STATIONS		
Date and Time (UTC)	MAHABALIPURAM	MO PUDUCHERRY	CHENNAI/MINAMB AKKAM
01.12.24/0600	80, SSW	0, NNW	120, SSW
01.12.24/1200	90, SW	20, W	130, SSW
01.12.24/1800	110, SW	50, W	140, SW

Contact: Cyclone Warning Division, Office of the Director General of Meteorology, India Meteorological Department, Ministry of Earth Sciences, E-mail: cyclonewarningdivision@gmail.com, Website: [rsmcnewdelhi.imd.gov.in](http://rsmcnewdelhi.imd.gov.in), Spatial rainfall distribution: Isolated: <25%, A few: 26-50%, Many: 51-75%, Most: 76-100%, Rainfall amount (mm): Heavy rain: 64.5 – 115.5, Very heavy rain: 115.6 – 204.4, Extremely heavy rain: 204.5 or more.





**OBSERVED AND FORECAST TRACK ALONGWITH WIND DISTRIBUTION FORECAST OF DEEP DEPRESSION (REMNANT OF CYCLONIC STORM "FENGAL") OVER NORTH COASTAL TAMIL NADU AND PUDUCHERRY BASED ON 0600 UTC (1130 HRS. IST) OF 01<sup>st</sup> DECEMBER, 2024.**



DATE/TIME : IN UTC  
IST : UTC + 0530  
KT : NAUTICAL MILE S/HOUR = 1.85 KM/HOUR  
LPA : LOW PRESSURE AREA  
WML : WELL MARKED LOW PRESSURE AREA  
D : DEPRESSION (17-27 KT)  
DD : DEEP DEPRESSION (28-33 KT)  
CS : CYCLONIC STORM (34-47 KT)  
SCS : SEVERE CYCLONIC STORM (48-63 KT)  
VSCS : VERY SEVERE CYCLONIC STORM (64-89 KT)  
ECS : EXTREMELY SEVERE CYCLONIC STORM (90-119 KT)  
SuCS : SUPER CYCLONIC STORM ( $\geq 120$  KT)

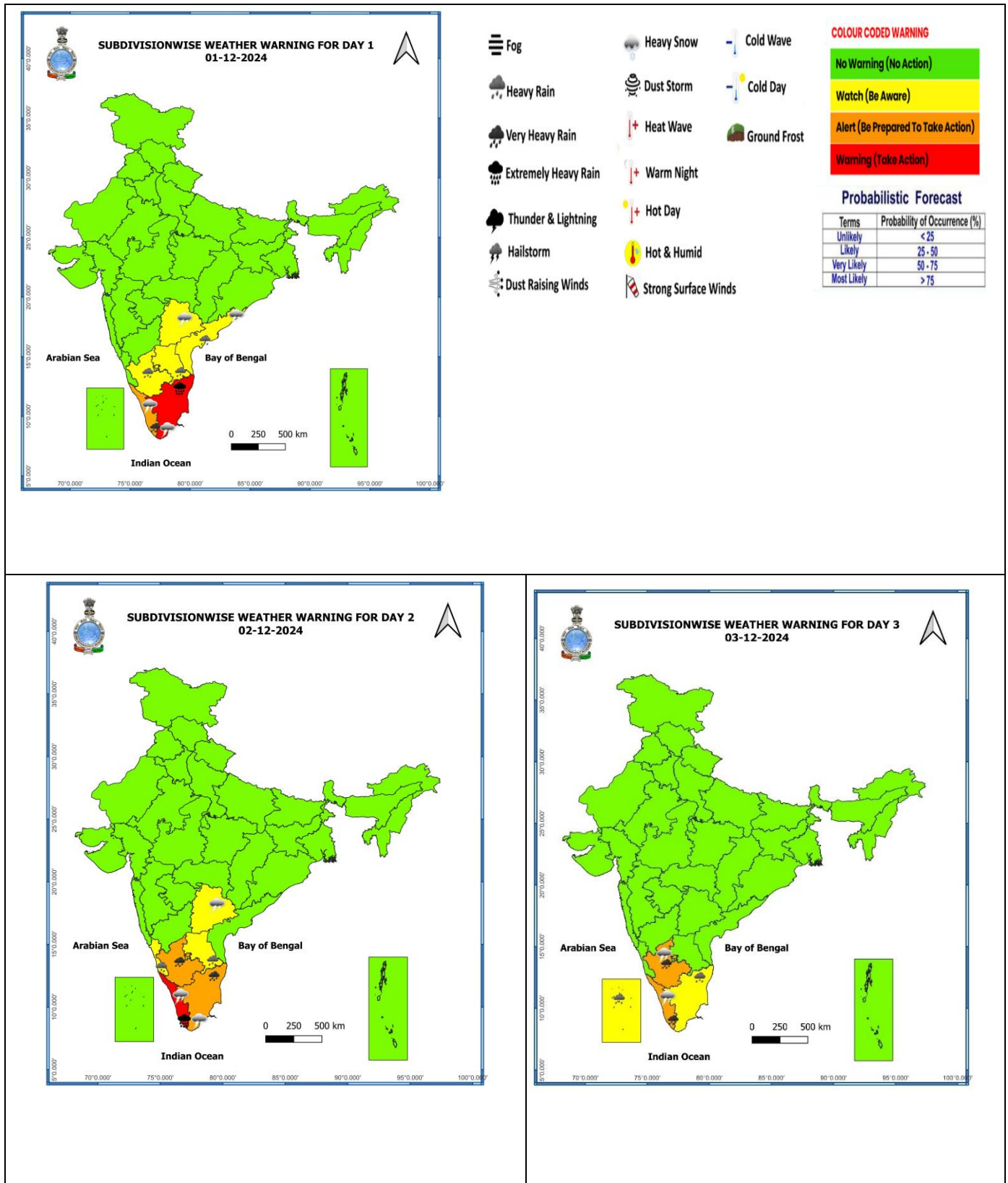
● LESS THAN 34 KT  
○ 34-47 KT  
●  $\geq 48$  KT  
— OBSERVED TRACK  
— FORECAST TRACK  
— CONE OF UNCERTAINTY  
AREA OF MAXIMUM SUSTAINED WIND SPEED:  
28-33 KT (52-61 KMPH)  
34-49 KT (62-91 KMPH)  
50-63 KT (92-117 KMPH)  
 $\geq 64$  KT ( $\geq 118$  KMPH)

**IMPACT OVER THE SEA**

MSW (knot/kmph)	Impact	Action
28-33 (52-61)	Very rough seas	Total suspension of fishing operations
34-49 (62-91)	High to very high seas	Total suspension of fishing operations
50-63 (92-117)	Very high seas	Total suspension of fishing operations
$\geq 64$ ( $\geq 118$ )	Phenomenal	Total suspension of fishing operations

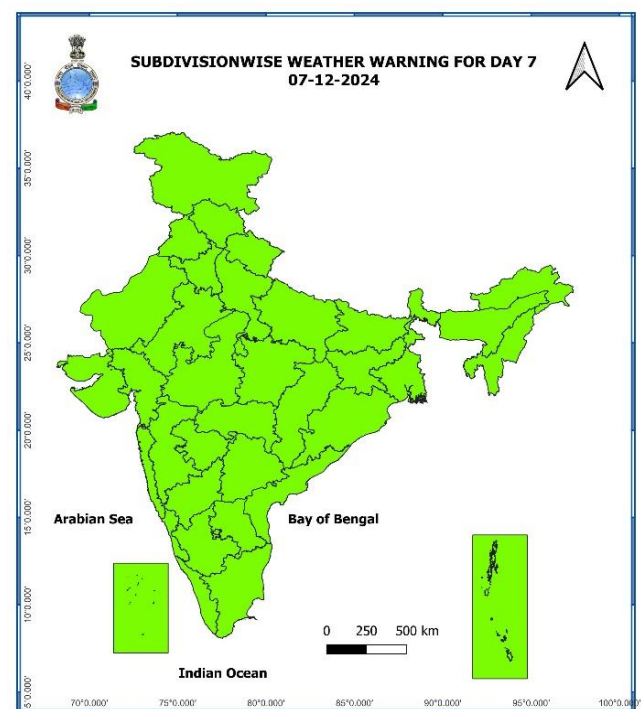
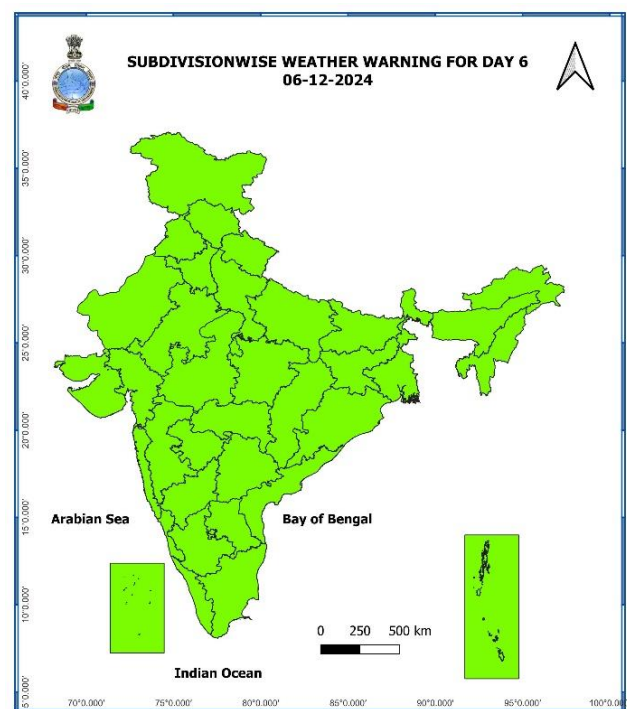
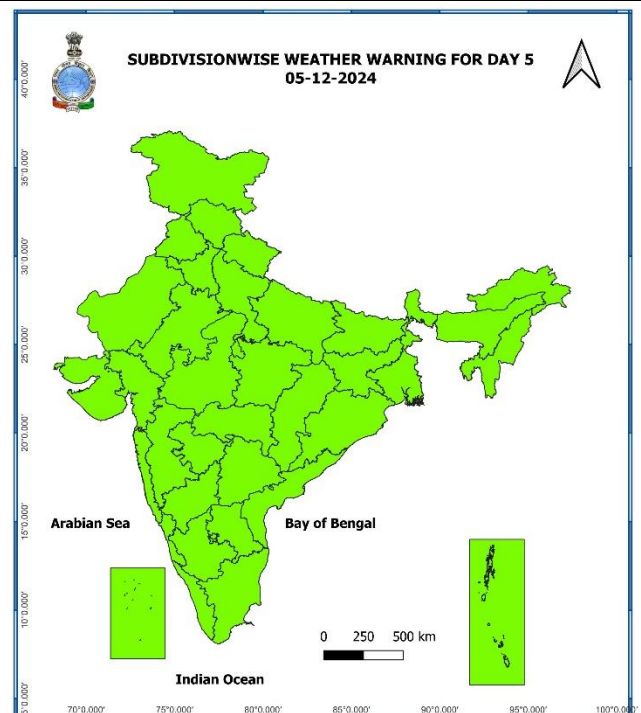
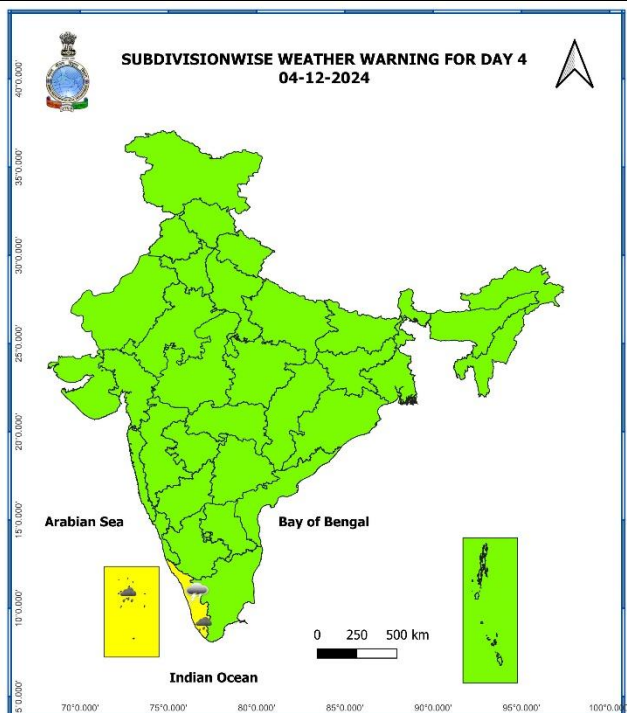
Contact: Cyclone Warning Division, Office of the Director General of Meteorology, India Meteorological Department, Ministry of Earth Sciences, E-mail: [cyclonewarningdivision@gmail.com](mailto:cyclonewarningdivision@gmail.com), Website: [rsmcnewdelhi.imd.gov.in](http://rsmcnewdelhi.imd.gov.in), Spatial rainfall distribution: Isolated: <25%, A few: 26-50%, Many: 51-75%, Most: 76-100%, Rainfall amount (mm): Heavy rain: 64.5 – 115.5, Very heavy rain: 115.6 – 204.4, Extremely heavy rain: 204.5 or more.

## Weather Warning Graphics



**Contact:** Cyclone Warning Division, Office of the Director General of Meteorology, India Meteorological Department, Ministry of Earth Sciences, E-mail: [cyclonewarningdivision@gmail.com](mailto:cyclonewarningdivision@gmail.com), Website: [rsmcnewdelhi.imd.gov.in](http://rsmcnewdelhi.imd.gov.in), Spatial rainfall distribution: Isolated: <25%, A few: 26-50%, Many: 51-75%, Most: 76-100%, Rainfall amount (mm): Heavy rain: 64.5 – 115.5, Very heavy rain: 115.6 – 204.4, Extremely heavy rain: 204.5 or more.

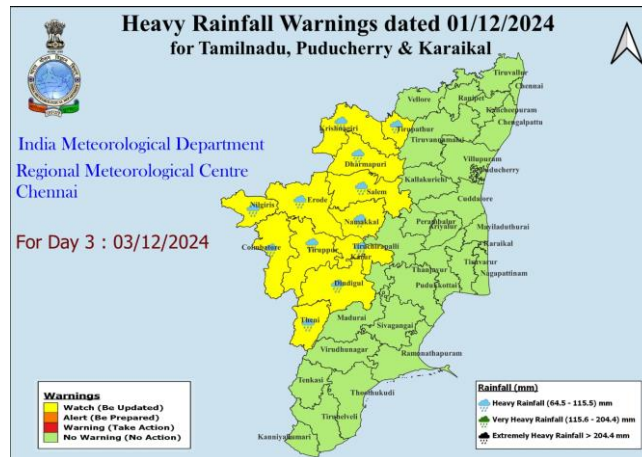
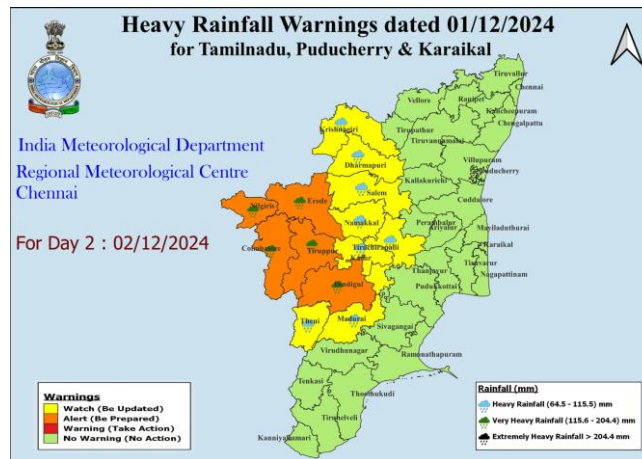
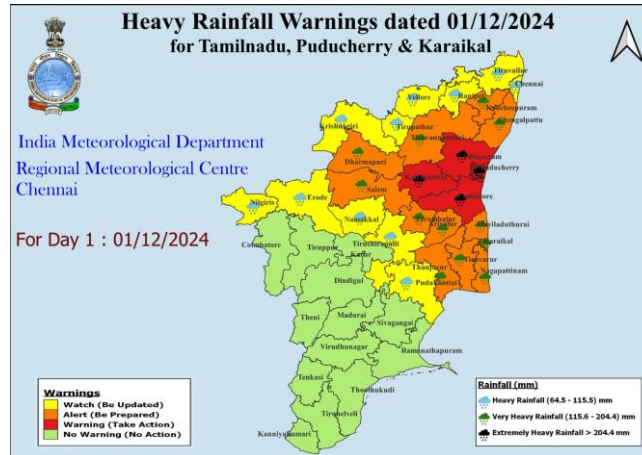




- Action may be taken based on **ORANGE AND RED COLOUR** warnings.
- Vulnerable regions likely urban and hilly areas action may be initiated for heavy rainfall warning.
- As the lead period increases forecast accuracy decreases.

Contact: Cyclone Warning Division, Office of the Director General of Meteorology, India Meteorological Department, Ministry of Earth Sciences, E-mail: [cyclonewarningdivision@gmail.com](mailto:cyclonewarningdivision@gmail.com), Website: [rsmcnewdelhi.imd.gov.in](http://rsmcnewdelhi.imd.gov.in), Spatial rainfall distribution: Isolated: <25%, A few: 26-50%, Many: 51-75%, Most: 76-100%, Rainfall amount (mm): Heavy rain: 64.5 – 115.5, Very heavy rain: 115.6 – 204.4, Extremely heavy rain: 204.5 or more.

## District-Wise Warning Graphics of Tamil Nadu & Puducherry



Contact: Cyclone Warning Division, Office of the Director General of Meteorology, India Meteorological Department, Ministry of Earth Sciences, E-mail: [cyclonewarningdivision@gmail.com](mailto:cyclonewarningdivision@gmail.com), Website: [rsmcnewdelhi.imd.gov.in](http://rsmcnewdelhi.imd.gov.in), Spatial rainfall distribution: Isolated: <25%, A few: 26-50%, Many: 51-75%, Most: 76-100%, Rainfall amount (mm): Heavy rain: 64.5 – 115.5, Very heavy rain: 115.6 – 204.4, Extremely heavy rain: 204.5 or more.

## District-Wise Warning Graphics of Andhra Pradesh

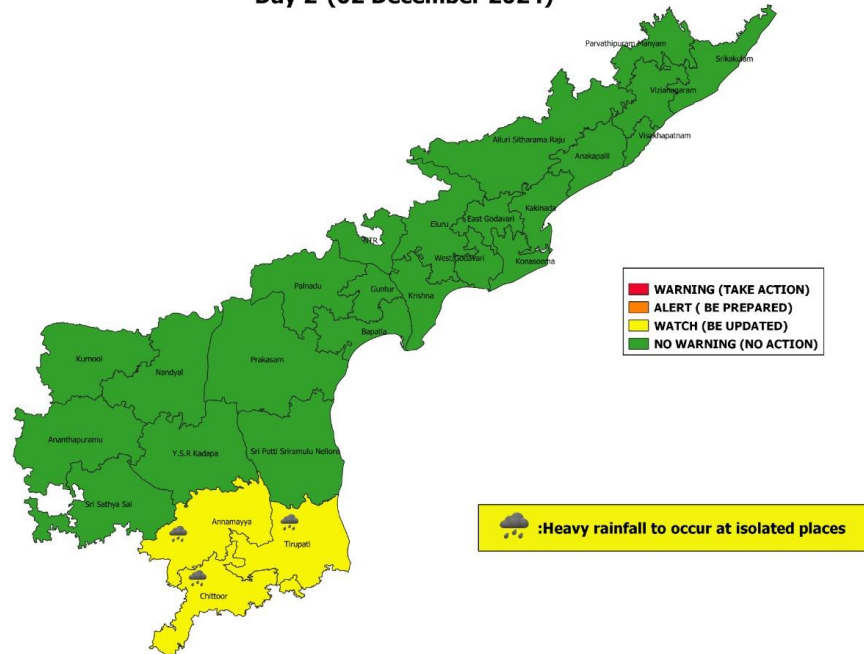


**Rainfall warnings for Andhra Pradesh and Yanam.**  
Valid from 0830 hrs IST of 02.12.2024 to 0830 hrs IST of 03.12.2024



Date of Issue:- 01 December 2024

**Day 2-(02 December 2024)**

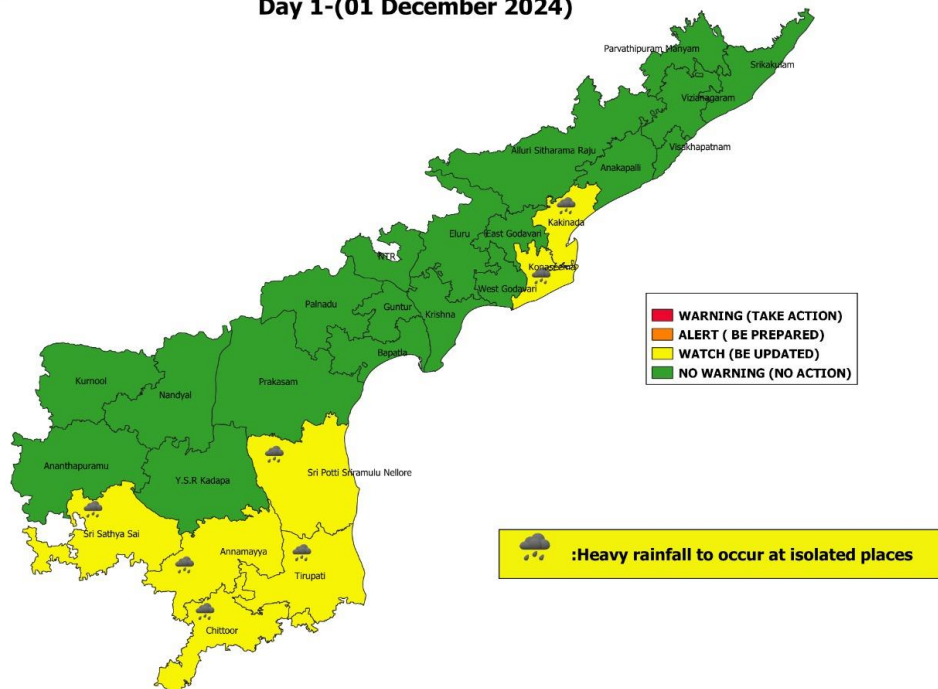


**Rainfall warnings for Andhra Pradesh and Yanam.**  
Valid from 1300 hrs IST of 01.12.2024 to 0830 hrs IST of 02.12.2024



Date of Issue:- 01 December 2024

**Day 1-(01 December 2024)**



Contact: Cyclone Warning Division, Office of the Director General of Meteorology, India Meteorological Department, Ministry of Earth Sciences, E-mail:[cyclonewarningdivision@gmail.com](mailto:cyclonewarningdivision@gmail.com), Website: [rsmcnewdelhi.imd.gov.in](http://rsmcnewdelhi.imd.gov.in), Spatial rainfall distribution: Isolated: <25%, A few: 26-50%, Many: 51-75%, Most: 76-100%, Rainfall amount (mm): Heavy rain: 64.5 – 115.5, Very heavy rain: 115.6 – 204.4, Extremely heavy rain: 204.5 or more.



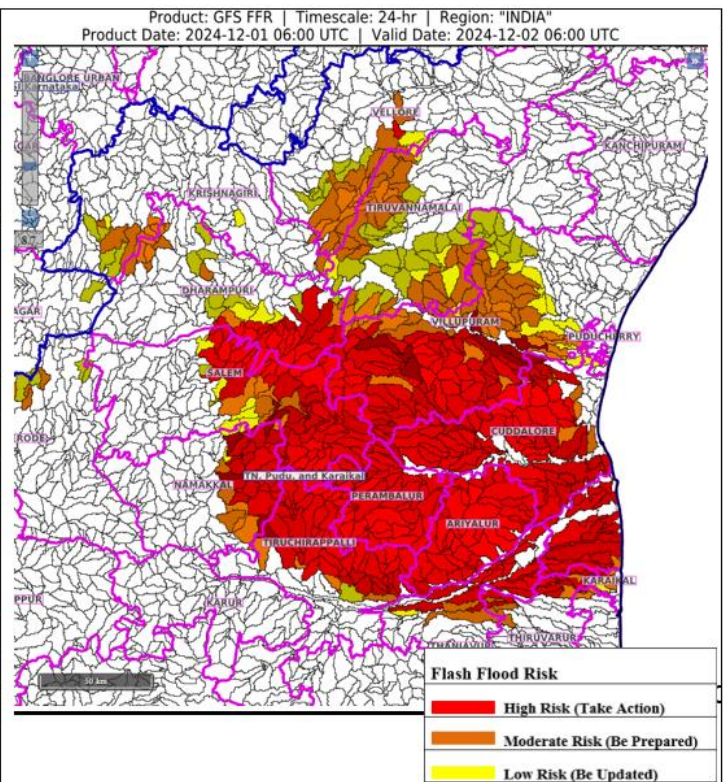
## Flash Flood Guidance

### **24 hours Outlook for the Flash Flood Risk (FFR) till 1130 IST of 02-12-2024:**

Moderate to High flash flood risk likely over few watersheds & neighbourhoods of following Met Sub-divisions during next 24 hours.

**Tamil Nadu -- Puducherry & Karaikal --** Karaikal, Puduchery, Ariyalur, Cuddalore, Dharampuri, Krishnagiri, Namakkal, Perambalur, Salem, Thanjavur, Tiruchirappalli, Tiruvannamalai and Vellore districts.

Surface runoff/ Inundation may occur at some fully-saturated soils & low-lying areas over Area of Concern (AoC) as shown in map due to expected rainfall occurrence in next 24 hours.

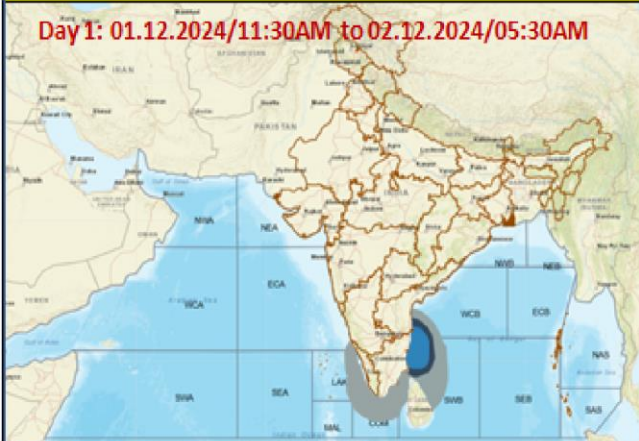


Flash Flood Risk	
<span style="display: inline-block; width: 20px; height: 10px; background-color: red; border: 1px solid black;"></span>	High Risk (Take Action)
<span style="display: inline-block; width: 20px; height: 10px; background-color: orange; border: 1px solid black;"></span>	Moderate Risk (Be Prepared)
<span style="display: inline-block; width: 20px; height: 10px; background-color: yellow; border: 1px solid black;"></span>	Low Risk (Be Updated)

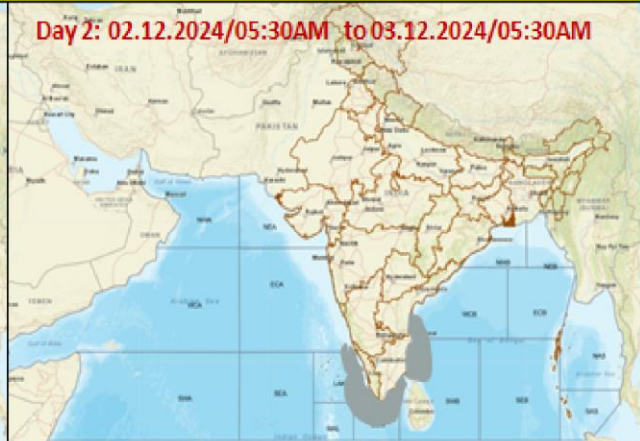
Contact: Cyclone Warning Division, Office of the Director General of Meteorology, India Meteorological Department, Ministry of Earth Sciences, E-mail: [cyclonewarningdivision@gmail.com](mailto:cyclonewarningdivision@gmail.com), Website: [rsmcnewdelhi.imd.gov.in](http://rsmcnewdelhi.imd.gov.in), Spatial rainfall distribution: Isolated: <25%, A few: 26-50%, Many: 51-75%, Most: 76-100%, Rainfall amount (mm): Heavy rain: 64.5 – 115.5, Very heavy rain: 115.6 – 204.4, Extremely heavy rain: 204.5 or more.

## Fishermen Warning Graphics

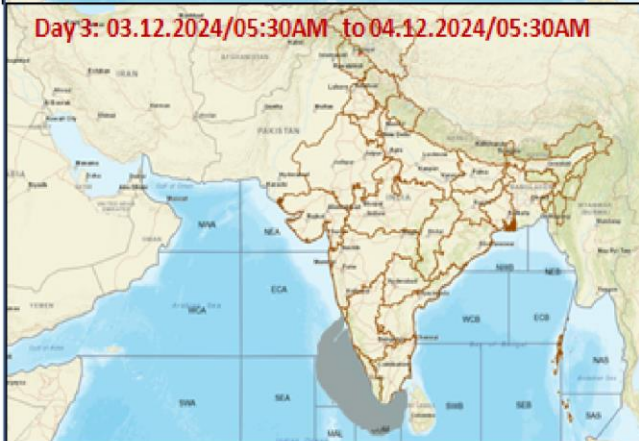
**Day 1: 01.12.2024/11:30AM to 02.12.2024/05:30AM**



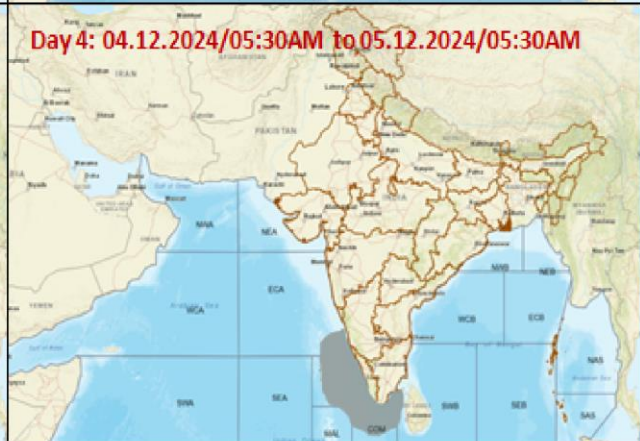
**Day 2: 02.12.2024/05:30AM to 03.12.2024/05:30AM**



**Day 3: 03.12.2024/05:30AM to 04.12.2024/05:30AM**



**Day 4: 04.12.2024/05:30AM to 05.12.2024/05:30AM**



**Day 5: 05.12.2024/05:30AM to 06.12.2024/05:30AM**



Squally Weather with wind speed 35-45 kmph gusting to 55 kmph

Squally wind with speed 45-55 kmph gusting to 65 kmph

Deep depression with wind speed 55-65 kmph gusting to 75 kmph

**Fishermen are advised not to venture into the marked areas.**

Contact: Cyclone Warning Division, Office of the Director General of Meteorology, India Meteorological Department, Ministry of Earth Sciences, E-mail: [cyclonewarningdivision@gmail.com](mailto:cyclonewarningdivision@gmail.com), Website: [rsmcnewdelhi.imd.gov.in](http://rsmcnewdelhi.imd.gov.in), Spatial rainfall distribution: Isolated: <25%, A few: 26-50%, Many: 51-75%, Most: 76-100%, Rainfall amount (mm): Heavy rain: 64.5 – 115.5, Very heavy rain: 115.6 – 204.4, Extremely heavy rain: 204.5 or more.