

Government of India
Ministry of Earth Sciences
India Meteorological Department



Press Release

Date: 05th March, 2025

Time of Issue: 1345 hours IST

Subject: i) Strong surface winds (25-35 kmph gusting to 45 kmph) likely to prevail over the plains of Northwest India including Delhi during next 24 hours.

ii) Isolated to scattered light to moderate rainfall/snowfall likely over Jammu, Kashmir, Ladakh and Himachal Pradesh during 09th -11th March, 2025.

i. Realised weather during past 24 hours till 0830 hours IST of today, the 05th March 2025:

- ❖ Light to moderate **Rainfall/Snowfall** observed at a few places over Jammu-Kashmir-Ladakh-Gilgit-Baltistan-Muzaffarabad, Himachal Pradesh & Arunachal Pradesh; at isolated places over Uttarakhand. Light **Rainfall** observed at isolated places over Assam & Meghalaya, Sub-Himalayan West Bengal & Sikkim, Punjab, Haryana and Kerala & Mahe.
- ❖ **Thunderstorm with lightning** reported at isolated places over Uttarakhand.
- ❖ **Hailstorm** recorded at isolated places over Uttarakhand.
- ❖ **Gusty winds** observed at isolated places over Jammu-Kashmir-Ladakh-Gilgit-Baltistan-Muzaffarabad, Himachal Pradesh, Punjab, Haryana, Delhi and Uttar Pradesh.
- ❖ **For more details of realised weather, kindly refer Annexure I**

Temperature:

- ❖ For temperature observations during past 24 hours till 0830 hours IST of today are provided in **Annexure II**

ii. Weather Systems, Forecast and warning (Annexure III & IV):

- ❖ A fresh **Western Disturbance** is likely to affect Western Himalayan region from 09th March, 2025. Under its influence;
 - ✓ **Isolated to Scattered** light/moderate rainfall/snowfall likely over Jammu-Kashmir-Ladakh-Gilgit-Baltistan-Muzaffarabad & Himachal Pradesh during 09th – 11th and Uttarakhand on 11th March.
- ❖ A **cyclonic circulation** lies over northeast Assam in lower tropospheric levels. Under its influence, **Scattered** light/moderate rainfall/snowfall accompanied with **thunderstorm and lightning** likely over Arunachal Pradesh and **Isolated** light/moderate rainfall likely over Assam & Meghalaya on 05th march.
- ❖ **Isolated to Scattered** light/moderate rainfall accompanied with **thunderstorm, lightning & gusty winds (speed 30-40 kmph)** likely over Bihar on 08th; with **thunderstorm & lightning** over Sub-Himalayan West Bengal & Sikkim on 07th & 08th March.
- ❖ **Strong surface winds (25-35 kmph gusting to 45 kmph) likely to prevail over the plains of Northwest India including Delhi during next 24 hours.**

Temperature Forecast:

Forecast of temperature:

Maximum temperature:

- ❖ No significant change in maximum temperatures likely over Northwest India during next 24 hours and gradual rise by 4-6°C thereafter.
- ❖ No significant change in maximum temperatures likely over Central India (except Vidarbha) during next 2 days and gradual rise by 3-4°C thereafter.
- ❖ Gradual fall in maximum temperatures by 2-3°C likely over Vidarbha during next 2 days and gradual rise by 3-5°C thereafter.
- ❖ No significant change in maximum temperatures likely over East India during next 3 days and gradual rise by about 2°C thereafter.

- ❖ Gradual rise in maximum temperatures by 2-3°C likely over Northeast India during next 2-3 days and no significant change thereafter.
- ❖ No significant change in maximum temperatures likely over Maharashtra, Telangana & North Interior Karnataka during next 2 days and gradual rise by 2-3°C thereafter.
- ❖ No significant change in maximum temperatures likely over Gujarat Region during next 24 hours and gradual rise by 3-5°C thereafter.
- ❖ No significant change in maximum temperatures likely over South India (except Telangana & North Interior Karnataka) during next 5 days.

Hot & Humid weather warnings:

- ❖ **Hot and humid weather** very likely to prevail over Kerala & Mahe on 05th & 06th March.

Fishermen Warnings:

- ❖ Fishermen are advised not to venture into along and off Gujarat coast on 05th March.

iii. Weather conditions and forecast over Delhi/NCR during 05th March to 08th March. 2025 (Annexure V)

For more details, kindly refer National Weather Bulletin:

https://mausam.imd.gov.in/responsive/all_india_forecast_bulletin.php

For District wise warnings refer: <https://mausam.imd.gov.in/responsive/districtWiseWarningGIS.php>

ANNEXURE I

Significant weather reported during past 24 hours till 0830 hours IST of today:

Rainfall/snowfall recorded (in cm)

- ❖ **Jammu-Kashmir-Ladakh-Gilgit-Baltistan-Muzaffarabad:** Kupwara (dist Kupwara) 2, Larnoo (dist Anantnag) 2;
- ❖ **Arunachal Pradesh:** Tuting (dist Upper Siang) 1, Tuting (dist Upper Siang) 1, Kabu Basti (dist West Siang) 1

Thunderstorm reported:

- ❖ **Uttarakhand:** Dehradun and Mussoorie.

Hailstorm reported:

- ❖ **Uttarakhand:** Mussoorie.

Gusty winds reported (in Kmph):

- ❖ **Jammu-Kashmir-Ladakh-Gilgit-Baltistan-Muzaffarabad:** Ramban 39; **Himachal Pradesh:** Tabo 46; **Punjab:** Mohali 48; **Haryana:** Ujha 43, Pandu Pindara 41, Bopani 41; **West Uttar Pradesh:** Agra 41; **East Uttar Pradesh:** Gorakhpur 33, Lucknow 44

- ❖ Maximum temperatures were in the range of 35-39°C at most places over Maharashtra state, Telangana, Kerala, Coastal & north interior Karnataka, south Chhattisgarh, Odisha, extreme south Gangetic West Bengal, north interior Tamil Nadu; 30-35°C at most places over remaining parts of Karnataka and Tamil Nadu, Andhra Pradesh, Gujarat, Madhya Pradesh, north Chhattisgarh, Jharkhand, remaining parts of Gangetic West Bengal, Bihar, East Uttar Pradesh, Mizoram and Tripura; 25-30°C over remaining parts of plains of Northwest India and Northeast India. Yesterday, the highest maximum temperature of **39.4°C** was reported at **Sholapur (Madhya Maharashtra)** over the country.
- ❖ During the past 24 hours, maximum temperatures had fallen by 2-5°C at many places northwest India and west Madhya Pradesh. It had risen by 1-2°C at many places over Jammu Division, Himachal Pradesh, Saurashtra & Kutch, Vidarbha, East Madhya Pradesh, East Uttar Pradesh, Chhattisgarh, Assam, East Telangana, south Tamil Nadu, coastal Karnataka and no significant change over rest parts of the country.
- ❖ Maximum temperatures were **appreciably above normal (3°C to 5°C)** at a few places over Odisha; at isolated places over Coastal Karnataka; **above normal (1°C to 3°C)** at many places over Vidarbha and Telangana; at a few places over Konkan & Goa and Coastal Andhra Pradesh & Yanam; at isolated places over East Uttar Pradesh, Saurashtra & Kutch, Madhya Maharashtra, Marathwada, Gangetic West Bengal, Bihar, Assam & Meghalaya, North Interior Karnataka, Coastal Karnataka, Kerala & Mahe, Tamil Nadu, Puducherry & Karaikal. These were **markedly below normal (-5°C or less)** at isolated places over Jammu-Kashmir-Ladakh-Gilgit-Baltistan-Muzaffarabad; **appreciably below normal (-3°C to -5°C)** at isolated places over West Rajasthan; **below normal (-3°C to -1°C)** at isolated places over East Rajasthan, West Madhya Pradesh and near normal over rest parts of the country.

Fig. 1: Maximum Temperatures

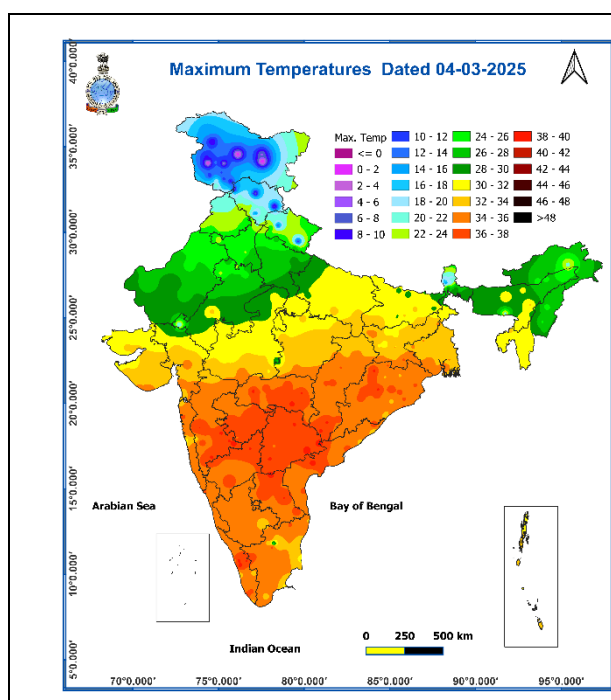
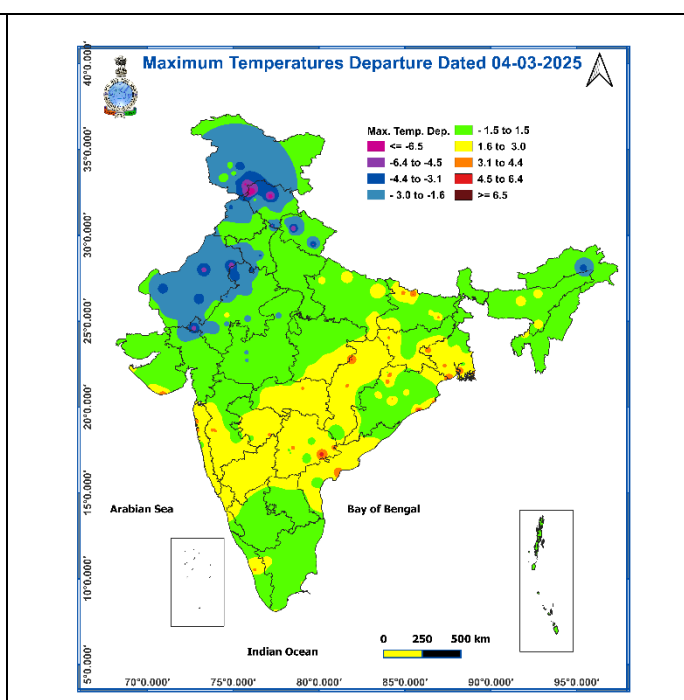


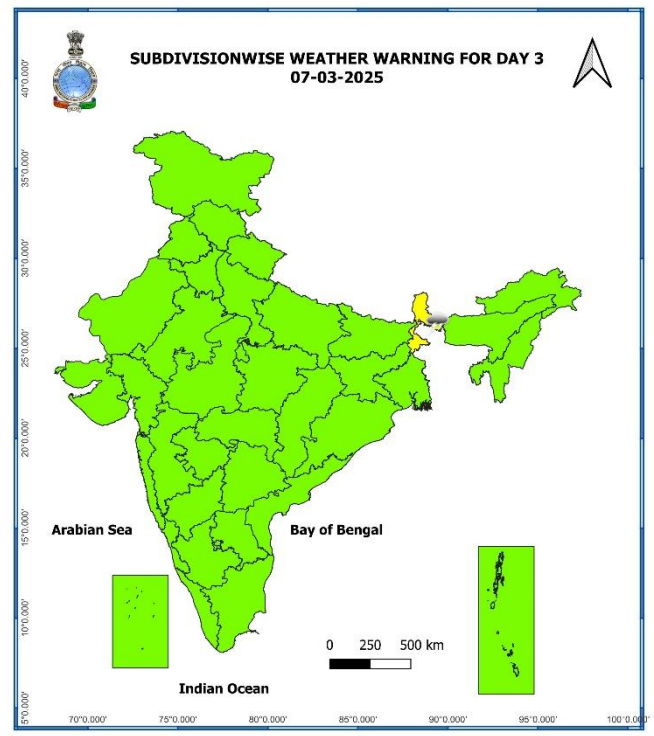
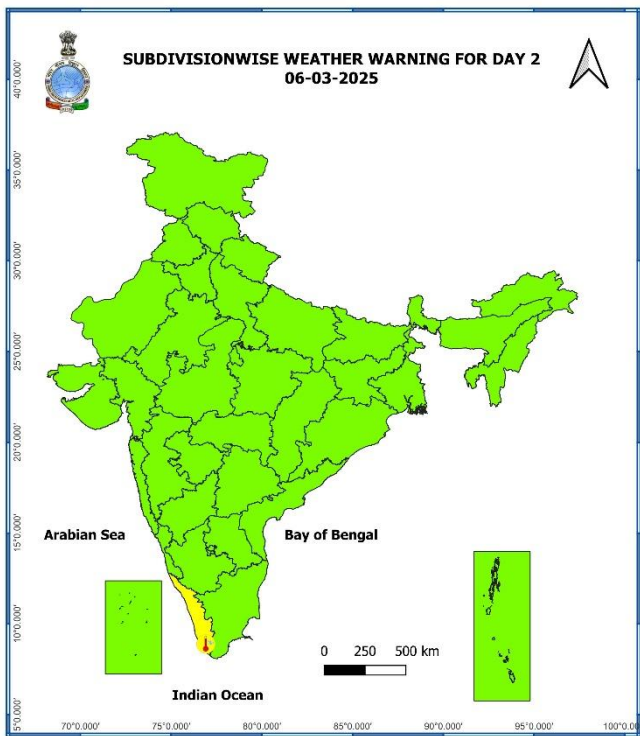
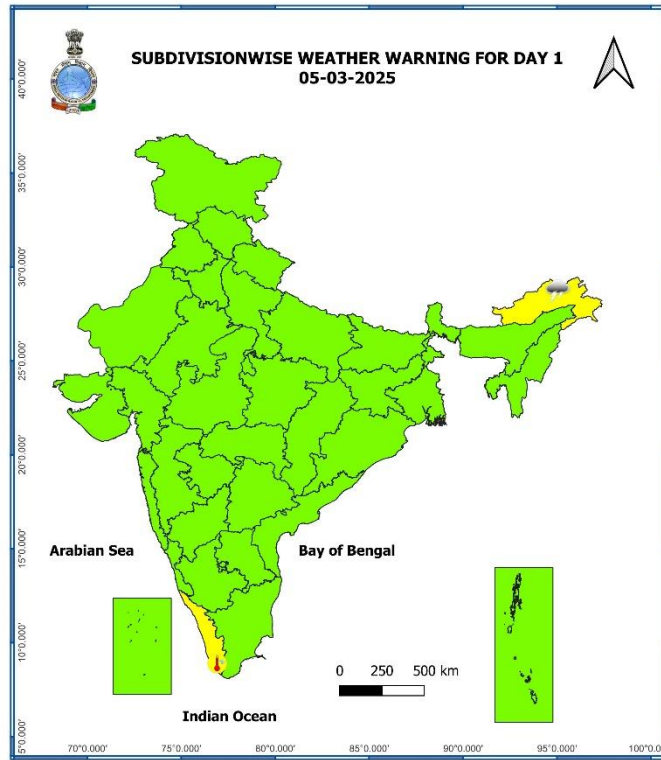
Fig. 2: Departure of Maximum Temperatures

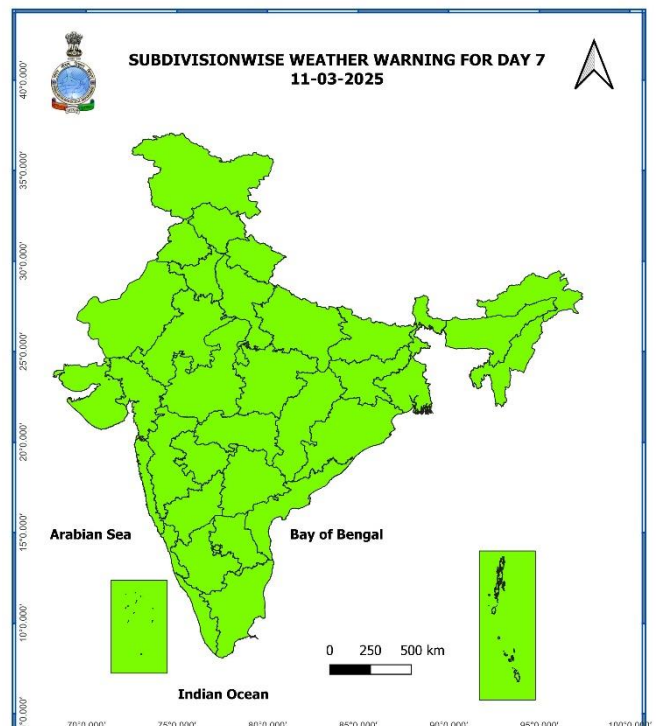
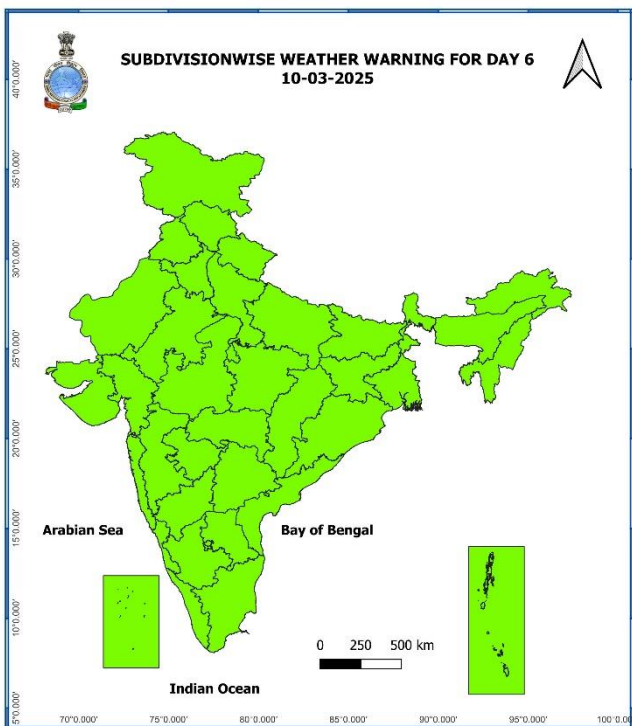
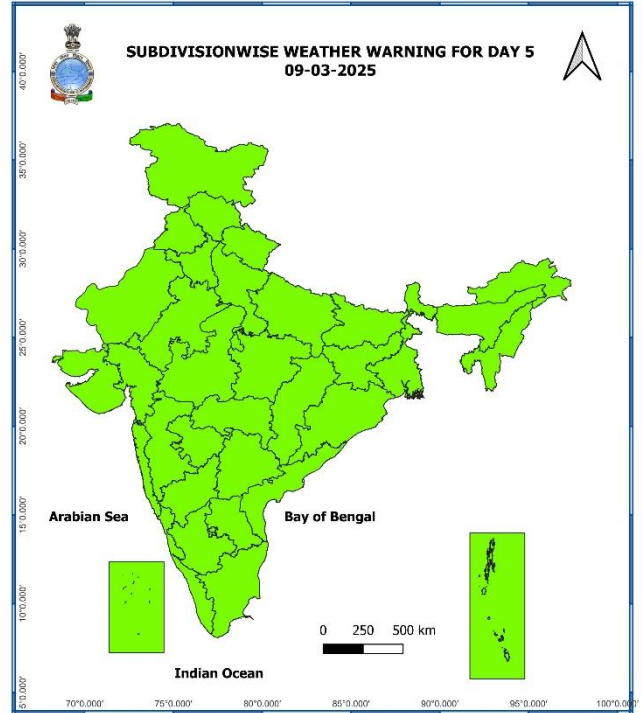
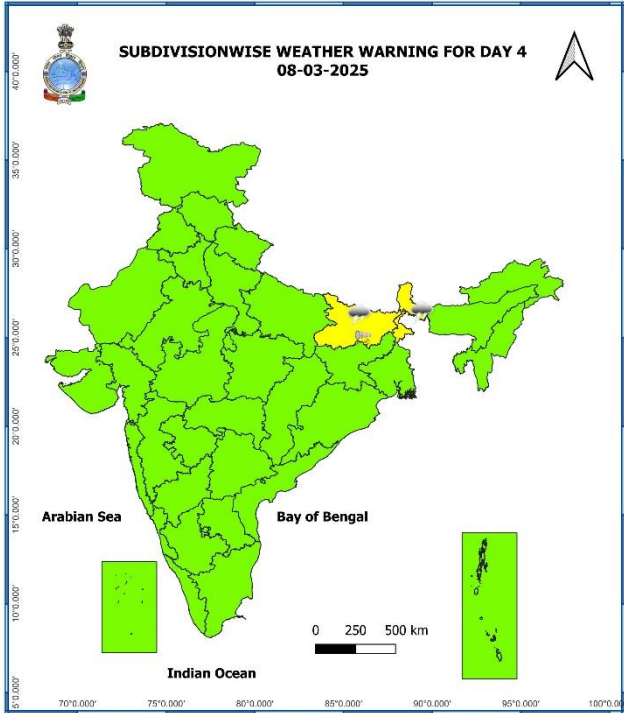


7 Days Rainfall Forecast

S. No.	Subdivision	05-Mar	06-Mar	07-Mar	08-Mar	09-Mar	10-Mar	11-Mar
		Day 1	Day 2	Day 3	Day 4	Day 5	Day 6	Day 7
1	ANDAMAN & NICOBAR ISLANDS	DRY	DRY	ISOL	SCT	FWS	FWS	FWS
2	ARUNACHAL PRADESH	SCT	ISOL	ISOL	ISOL	ISOL	DRY	DRY
3	ASSAM & MEGHALAYA	ISOL	DRY	DRY	DRY	DRY	DRY	DRY
4	NAGALAND, MANIPUR, MIZORAM & TRIPURA	DRY	DRY	DRY	DRY	DRY	DRY	DRY
5	SUB-HIMALAYAN WEST BENGAL & SIKKIM	ISOL	ISOL	SCT	SCT	ISOL	ISOL	DRY
6	GANGETIC WEST BENGAL	DRY	DRY	DRY	DRY	DRY	DRY	DRY
7	ODISHA	DRY	DRY	DRY	DRY	DRY	DRY	DRY
8	JHARKHAND	DRY	DRY	DRY	DRY	DRY	DRY	DRY
9	BIHAR	DRY	DRY	DRY	ISOL	ISOL	DRY	DRY
10	EAST UTTAR PRADESH	DRY	DRY	DRY	DRY	DRY	DRY	DRY
11	WEST UTTAR PRADESH	DRY	DRY	DRY	DRY	DRY	DRY	DRY
12	UTTARAKHAND	DRY	DRY	DRY	DRY	DRY	ISOL	ISOL
13	HARYANA CHANDIGARH & DELHI	DRY	DRY	DRY	DRY	DRY	DRY	DRY
14	PUNJAB	DRY	DRY	DRY	DRY	DRY	DRY	DRY
15	HIMACHAL PRADESH	DRY	DRY	DRY	DRY	ISOL	SCT	SCT
16	JAMMU & KASHMIR AND LADAKH	DRY	DRY	DRY	DRY	ISOL	FWS	SCT
17	WEST RAJASTHAN	DRY	DRY	DRY	DRY	DRY	DRY	DRY
18	EAST RAJASTHAN	DRY	DRY	DRY	DRY	DRY	DRY	DRY
19	WEST MADHYA PRADESH	DRY	DRY	DRY	DRY	DRY	DRY	DRY
20	EAST MADHYA PRADESH	DRY	DRY	DRY	DRY	DRY	DRY	DRY
21	GUJARAT REGION	DRY	DRY	DRY	DRY	DRY	DRY	DRY
22	SAURASHTRA & KUTCH	DRY	DRY	DRY	DRY	DRY	DRY	DRY
23	KONKAN & GOA	DRY	DRY	DRY	DRY	DRY	DRY	DRY
24	MADHYA MAHARASHTRA	DRY	DRY	DRY	DRY	DRY	DRY	DRY
25	MARATHAWADA	DRY	DRY	DRY	DRY	DRY	DRY	DRY
26	VIDARBHA	DRY	DRY	DRY	DRY	DRY	DRY	DRY
27	CHHATTISGARH	DRY	DRY	DRY	DRY	DRY	DRY	DRY
28	COASTAL ANDHRA PRADESH & YANAM	DRY	DRY	DRY	DRY	DRY	DRY	DRY
29	TELANGANA	DRY	DRY	DRY	DRY	DRY	DRY	DRY
30	RAYALASEEMA	DRY	DRY	DRY	DRY	DRY	DRY	DRY
31	TAMILNADU PUDUCHERRY & KARAIKAL	DRY	DRY	DRY	DRY	DRY	ISOL	SCT
32	COASTAL KARNATAKA	DRY	DRY	DRY	DRY	DRY	DRY	DRY
33	NORTH INTERIOR KARNATAKA	DRY	DRY	DRY	DRY	DRY	DRY	DRY
34	SOUTH INTERIOR KARNATAKA	DRY	DRY	DRY	DRY	DRY	DRY	DRY
35	KERALA & MAHE	ISOL	ISOL	ISOL	ISOL	ISOL	ISOL	ISOL
36	LAKSHADWEEP	DRY	DRY	DRY	DRY	DRY	DRY	DRY

- As the lead period increases forecast accuracy decreases.





- Action may be taken based on ORANGE AND RED COLOUR warnings.
- Vulnerable regions likely urban and hilly areas action may be initiated for heavy rainfall warning.
- As the lead period increases forecast accuracy decreases.

Detailed district wise Multi Hazard weather warning for next five days available at <https://mausam.imd.gov.in/responsive/districtWiseWarningGIS.php>

Weather forecast over Delhi/NCR during 05th Mar. to 08th Mar. 2025

Past Weather:

There has been a fall in minimum and maximum temperatures upto 03 - 04°C over Delhi/NCR during the past 24 hours. The maximum and minimum temperatures over Delhi are in the range of 26 to 28°C and 10 to 12°C, respectively. The minimum temperature was below normal upto 03°C and maximum temperature was near normal over most places. Mainly clear sky conditions with predominant surface wind from the northwest direction with wind speeds less than 20 to 22 kmph prevailed during the past 24 hours. Mainly clear sky conditions with wind speed less than 20 kmph from the northwest direction and gusty wind upto 40 kmph prevailed over the region in the forenoon today.

Weather Forecast:

05.03.2025: Mainly clear sky. Strong surface winds (speed 25 – 35 kmph) and gusty wind upto 40 kmph. The maximum temperature over Delhi is likely to be in the range of 25 to 27°C. The predominant surface wind will likely be from the northwest direction with a wind speed of less than 24 kmph till evening. It would decrease thereafter becoming less than 18 kmph from the northwest direction during the night.

06.03.2025: Mainly clear sky. Mist likely in the morning. The maximum and minimum temperatures over Delhi are likely to be in the range of 28 to 30°C and 12 to 14°C, respectively. The predominant surface wind will likely be from the northwest direction with a wind speed of 14-18 kmph during morning hours. The wind speed will gradually decrease thereafter becoming 12-14 kmph from the northwest direction during the afternoon. It will decrease becoming less than 08 kmph from the north direction during evening and night.

07.03.2025: Mainly clear sky. Mist likely in the morning. The maximum and minimum temperatures over Delhi are likely to be in the range of 28 to 30°C and 12 to 14°C, respectively. The predominant surface wind will likely be from the northwest direction with a wind speed of 04-06 kmph during morning hours. The wind speed will gradually increase thereafter becoming 10-12 kmph from the northwest direction during the afternoon. It will decrease becoming less than 08 kmph from the northwest direction during evening and night.

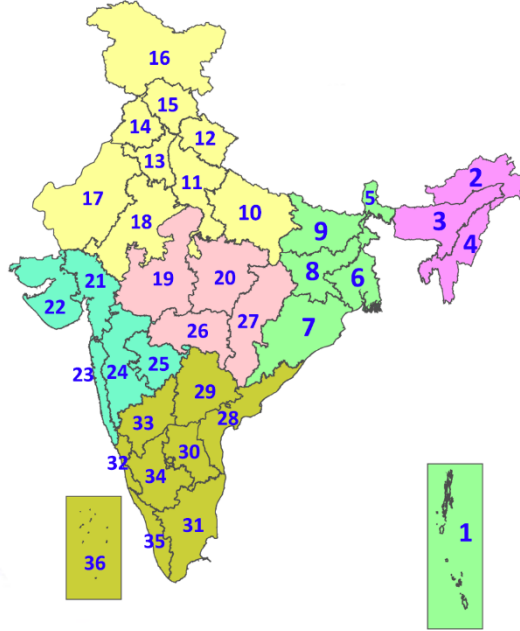
08.03.2025: Mainly clear sky. Mist likely in the morning. The maximum and minimum temperatures over Delhi are likely to be in the range of 30 to 32°C and 14 to 16°C, respectively. The predominant surface wind will likely be from the northwest direction with a wind speed of 08-10 kmph during morning hours. The wind speed will gradually increase becoming 14-16 kmph from the northwest direction in the afternoon. It will decrease becoming less than 08 kmph from the north direction during evening and night.

Legends & abbreviations:

- ❖ **Heavy Rain:** 64.5-115.5mm; **Very Heavy Rain:** 115.6-204.4mm; **Extremely Heavy Rain:** >204.4mm.
- ❖ **Obsy:** Observatory; **AWS:** Automatic Weather Station; **ARG:** Automatic Rain Gauge; **dist:** District; **NH:** National Highway; **KVK:** Krishi Vigyan Kendra; **DVC:** Damodar Valley Corporation; **PTO:** Part Time Office, **Aero:** Aerodrome, **IAF:** Indian Air Force.
- ❖ **Region wise classification of meteorological Sub-Divisions:**
 - **Northwest India:** Western Himalayan Region (Jammu-Kashmir-Ladakh-Gilgit-Baltistan-Muzaffarabad, Himachal Pradesh and Uttarakhand); Punjab, Haryana-Chandigarh-Delhi; West Uttar Pradesh, East Uttar Pradesh, West Rajasthan and East Rajasthan.
 - **Central India:** West Madhya Pradesh, East Madhya Pradesh, Vidarbha and Chhattisgarh.
 - **East India:** Bihar, Jharkhand, Sub-Himalayan West Bengal & Sikkim; Gangetic West Bengal, Odisha and Andaman & Nicobar Islands.
 - **Northeast India:** Arunachal Pradesh, Assam & Meghalaya and Nagaland, Manipur, Mizoram & Tripura.
 - **West India:** Gujarat Region, Saurashtra & Kutch, Konkan & Goa, Madhya Maharashtra and Marathwada.
 - **South India:** Coastal Andhra Pradesh & Yanam, Telangana, Rayalaseema, Coastal Karnataka, North Interior Karnataka, South Interior Karnataka, Kerala & Mahe, Tamil Nadu, Puducherry & Karaikal and Lakshadweep.

LEGENDS

1. अंडमान और निकोबार द्वीपसमूह
2. अरुणाचल प्रदेश
3. असम और मेघालय
4. नागालैंड, मणिपुर, मिजोरम और त्रिपुरा
5. उप-हिमालयी पश्चिम बंगाल और सिक्किम
6. गंगीय पश्चिम बंगाल
7. ओडिशा
8. झारखंड
9. बिहार
10. पूर्वी उत्तर प्रदेश
11. पश्चिम उत्तर प्रदेश
12. उत्तराखंड
13. हरियाणा, चंडीगढ़ और दिल्ली
14. पंजाब
15. हिमाचल प्रदेश
16. जम्मू और कश्मीर और लद्दाख
17. पश्चिम राजस्थान
18. पूर्वी राजस्थान
19. पश्चिम मध्य प्रदेश
20. पूर्वी मध्य प्रदेश
21. गुजरात
22. सौराष्ट्र
23. कोंकण और गोवा
24. मध्य महाराष्ट्र
25. मराठवाड़ा
26. विदर्भ
27. छत्तीसगढ़
28. तटीय आंध्र प्रदेश और यनम
29. तेलंगाना
30. रायलसीमा
31. तमिलनाडु, पुडुचेरी और कराईकल
32. तटीय कर्नाटक
33. आंतरिक उत्तरी कर्नाटक
34. आंतरिक दक्षिणी कर्नाटक
35. केरल और माहे
36. लक्षद्वीप



1. Andaman & Nicobar Islands
2. Arunachal Pradesh
3. Assam & Meghalaya
4. Nagaland, Manipur, Mizoram & Tripura
5. Sub-Himalayan West Bengal & Sikkim
6. Gangetic West Bengal
7. Odisha
8. Jharkhand
9. Bihar
10. East Uttar Pradesh
11. West Uttar Pradesh
12. Uttarakhand
13. Haryana, Chandigarh & Delhi
14. Punjab
15. Himachal Pradesh
16. Jammu & Kashmir and Ladakh
17. West Rajasthan
18. East Rajasthan
19. West Madhya Pradesh
20. East Madhya Pradesh
21. Gujarat
22. Saurashtra
23. Konkan & Goa
24. Madhya Maharashtra
25. Marathwada
26. Vidarbha
27. Chhattisgarh
28. Coastal Andhra Pradesh & Yanam
29. Telangana
30. Rayalaseema
31. Tamilnadu, Puducherry & Karaikal
32. Coastal Karnataka
33. North Interior Karnataka
34. South Interior Karnataka
35. Kerala & Mahe
36. Lakshadweep

SPATIAL DISTRIBUTION (% of Stations reporting)

% Stations	Category	% Stations	Category
76-100	Widespread (WS/Most Places)	26-50	Scattered (SCT/A Few Places)
51-75	Fairly Widespread (FWS/Many Places)	1-25	Isolated (ISOL)

- | | | |
|----------------------|----------------------|--------------|
| Fog | Heavy Snow | Cold Wave |
| Heavy Rain | Dust Storm | Cold Day |
| Very Heavy Rain | Heat Wave | Ground Frost |
| Extremely Heavy Rain | Warm Night | |
| Thunder & Lightning | Hot Day | |
| Hailstorm | Hot & Humid | |
| Dust Raising Winds | Strong Surface Winds | |

COLOUR CODED WARNING

No Warning (No Action)
Watch (Be Aware)
Alert (Be Prepared To Take Action)
Warning (Take Action)

Probabilistic Forecast

Terms	Probability of Occurrence (%)
Unlikely	< 25
Likely	25 - 50
Very Likely	50 - 75
Most Likely	> 75

* Red colour warning does not mean "Red Alert", Red colour warning means "Take Action".
Forecast and Warning for any day is valid from 0830 hours IST of day till 0830 hours IST of next day.
For more details, kindly visit <https://mausam.imd.gov.in> or contact: 011-2434-4599
(Service to the Nation since 1875)

DEFINITION/CRITERIA

Rain/ Snow *	Heavy: 64.5 to 115.5 mm/cm * Very Heavy: 115.6 to 204.4 mm/cm * Extremely Heavy: > 204.4 mm/cm *
Heat Wave	When maximum temperature of a station reaches $\geq 40^\circ\text{C}$ for plains and $\geq 30^\circ\text{C}$ for hilly regions (a) Based on Departure from normal Heat Wave: Maximum Temperature Departure from normal 4.5°C to 6.4°C . Severe Heat Wave: Maximum Temperature Departure from normal $\geq 6.5^\circ\text{C}$ (b). Based on Actual maximum temperature Heat Wave: When actual maximum temperature $\geq 45^\circ\text{C}$. Severe Heat Wave: When actual maximum temperature $\geq 47^\circ\text{C}$ (c). Criteria for heat wave for coastal stations When maximum temperature departure is $> 4.5^\circ\text{C}$ from normal. Heat Wave may be described provided maximum temperature $\geq 37^\circ\text{C}$
Warm Night	When maximum temperature remains 40°C Warm Night: When minimum temperature departure 4.5°C to 6.4°C . Severe Warm Night: When minimum temperature departure $> 6.4^\circ\text{C}$.
Cold Wave	When minimum temperature of a station $\leq 10^\circ\text{C}$ for plains and $\leq 0^\circ\text{C}$ for hilly regions. (a). Based on departure Cold Wave: Minimum Temperature Departure from normal -4.5°C to -6.4°C . Severe Cold Wave: Minimum Temperature Departure from normal $\leq -6.5^\circ\text{C}$ (b) Based on actual Minimum Temperature (for Plains only) Cold Wave : When Minimum Temperature is $\leq 4.0^\circ\text{C}$ Severe Cold Wave: When Minimum Temperature is $\leq 2.0^\circ\text{C}$ (c) For Coastal Stations When Minimum Temperature departure is $\leq -4.5^\circ\text{C}$ & actual Minimum Temperature is $\leq 15^\circ\text{C}$
Cold Day	When minimum temperature of a station $\leq 10^\circ\text{C}$ for plains and $\leq 0^\circ\text{C}$ for hilly regions Based on departure Cold Day: Maximum Temperature Departure from normal -4.5°C to -6.4°C . Severe Cold Day: Maximum Temperature Departure from normal $\leq -6.5^\circ\text{C}$
Fog	Phenomenon of small droplets suspended in air and the horizontal visibility $< 1\text{km}$ Moderate Fog: When the visibility between 500-200 metres Dense Fog: when the visibility between 50- 200 metres Very Dense Fog: when the visibility < 50 metres
Thunderstorm	Sudden electrical discharges manifested by a flash of light (Lightning) and a sharp rumbling sound (thunder)
Dust/Sand Storm	An ensemble of particles of dust or sand energetically lifted to great heights by a strong and turbulent wind.
Frost	Ice deposits on ground Air temperature $\leq 4^\circ\text{C}$ (over Plains)
Squall	A strong wind that rises suddenly, lasts for atleast 1 minute. Moderate: Wind speed 52-61 kmph Severe: Wind speed 62-87 kmph Very Severe: Wind speed > 87 kmph
Sea State	Effect of various waves in the sea over specific area Rough to very rough: Wind speed 41-62 kmph (22-33 knots) & Wave height 2.5-6 metre High to very high: Wind speed 63-117 kmph (34-63 knots) & Wave height 6-14 metre Phenomenal: Wind speed > 117 kmph (> 63 knots) & Wave height > 14 metre
Cyclone	Cyclonic Storm: Wind speed 62-87 kmph (34-47 knots) Severe Cyclonic Storm: Wind speed 88-117 kmph (48-63 knots) Very Severe Cyclonic Storm: Wind speed 118-165 kmph (64 - 89 knots) Extremely Severe Cyclonic Storm: Wind speed 166-220 kmph (90 -119 knots) Super Cyclone Strom: Wind speed > 220 kmph (> 119 knots)

* Red colour warning does not mean "Red Alert", Red colour warning means "Take Action".
 Forecast and Warning for any day is valid from 0830 hours IST of day till 0830 hours IST of next day.
 For more details, kindly visit <https://mausam.imd.gov.in> or contact: 011-2434-4599
 (Service to the Nation since 1875)

Hot and Humid: When maximum temperatures remain 3°C above normal along with the above normal relative humidity.