

Government of India  
Ministry of Earth Sciences  
India Meteorological Department



Press Release

Date: 08<sup>th</sup> March, 2025

Time of Issue: 1230 hours IST

**Subject: i) A fresh rainfall episode over Western Himalayan region during 09<sup>th</sup> -14<sup>th</sup> March with isolated heavy rainfall/snowfall over Jammu-Kashmir and Himachal Pradesh on 10<sup>th</sup> March, 2025.**

**ii) A fresh Heat wave spell likely to commence over Kutch region from today and expand to more parts of Gujarat state and Konkan region during 09<sup>th</sup> -12<sup>th</sup> March, 2025.**

**i. Realised weather during past 24 hours till 0830 hours IST of today, the 08<sup>th</sup> March 2025:**

- ❖ Light to moderate **Rainfall/Snowfall** observed at many places over Arunachal Pradesh; at isolated places over Himachal Pradesh. Light **Rainfall** observed at a few places over Sub-Himalayan West Bengal & Sikkim; at isolated places over Assam & Meghalaya, Coastal Andhra Pradesh & Yanam and Kerala & Mahe.
- ❖ For more details of realised weather, kindly refer [Annexure I](#)

**Temperature:**

- ❖ For temperature observations during past 24 hours till 0830 hours IST of today are provided in [Annexure II](#)

**ii. Weather Systems, Forecast and warning (Annexure III & IV):**

- ❖ A fresh **Western Disturbance** is likely to affect Western Himalayan region from 09<sup>th</sup> March, 2025. Under its influence;
  - ✓ **Scattered to fairly widespread** light/moderate rainfall/snowfall likely over Jammu-Kashmir-Ladakh-Gilgit-Baltistan-Muzaffarabad and Himachal Pradesh and Uttarakhand during 9<sup>th</sup> -14<sup>th</sup> March. **Isolated** light/moderate rainfall likely over Punjab during 12<sup>th</sup> - 14<sup>th</sup>; Haryana on 13<sup>th</sup> & 14<sup>th</sup> and West Uttar Pradesh on 14<sup>th</sup> March.
  - ✓ **Thunderstorm activity** with isolated **heavy rainfall/snowfall** likely over Jammu-Kashmir and Himachal Pradesh on 10<sup>th</sup> March.
- ❖ A **cyclonic circulation** lies over central Assam with a trough aloft roughly along Long. 90°E to the north of Lat. 23°N in lower tropospheric levels. Under its influence,
  - ✓ **Isolated to Scattered light/moderate rainfall/snowfall** accompanied with **thunderstorm and lightning** likely over Arunachal Pradesh, Assam & Meghalaya, Nagaland and Sikkim on 08<sup>th</sup>; and Sub-Himalayan West Bengal on 08<sup>th</sup> & 09<sup>th</sup> March.
- ❖ Under the influence of easterly wave activity,
  - ✓ **Isolated to Scattered** light/moderate rainfall accompanied with **thunderstorm & lightning** likely over Andaman & Nicobar Islands on 08<sup>th</sup>; Tamilnadu, Puducherry & Karaikal on 10<sup>th</sup> & 11<sup>th</sup>; Kerala & Mahe, Lakshadweep and South Interior Karnataka on 11<sup>th</sup> & 12<sup>th</sup> March with isolated **heavy rainfall** over south Tamilnadu and Kerala & Mahe on 11<sup>th</sup> March.
- ❖ **Strong surface winds (20-30 kmph) likely to prevail over the Indo Gangetic Plains including Delhi on 11<sup>th</sup> & 12<sup>th</sup> March.**

**Temperature Forecast:**

**Forecast of temperature:**

**Maximum temperature:**

- ❖ Gradual rise in maximum temperatures by 3-4°C likely over Northwest India during next 4 days and no significant change thereafter.

- ❖ Gradual rise in maximum temperatures by 2-4°C likely over Central & East India and Maharashtra during next 5 days.
- ❖ Gradual rise in maximum temperatures by 3-5°C likely over Gujarat State during next 5 days.
- ❖ No significant change in maximum temperatures likely over rest parts of the country.

**Hot & Humid weather warning:**

- ❖ **Hot and humid weather** very likely to prevail over Konkan & Goa on 08<sup>th</sup> & 12<sup>th</sup>; Gujarat Region, Coastal Karnataka & Kerala & Mahe on 08<sup>th</sup> & 09<sup>th</sup> March.

**Heat Wave Warning:**

- ❖ **Heat wave** very likely to prevail over Saurashtra & Kutch during 08<sup>th</sup>-12<sup>th</sup>; Konkan & Goa during 09<sup>th</sup> -11<sup>th</sup>; Gujarat Region during 10<sup>th</sup>-12<sup>th</sup> March.

**Fishermen Warnings:**

- ❖ Fishermen are advised not to venture into many parts of southwest Bay of Bengal and along and off Sri Lanka coast, Gulf of Mannar and adjoining Comorin area, along and off south Tamil Nadu coast on 10<sup>th</sup> & 11<sup>th</sup> March.

**iii. Weather conditions and forecast over Delhi/NCR during 08<sup>th</sup> March to 11<sup>th</sup> March. 2025 (Annexure V)**

For more details, kindly refer National Weather Bulletin:

[https://mausam.imd.gov.in/responsive/all\\_india\\_forecast\\_bulletin.php](https://mausam.imd.gov.in/responsive/all_india_forecast_bulletin.php)

For District wise warnings refer: <https://mausam.imd.gov.in/responsive/districtWiseWarningGIS.php>

**ANNEXURE I**

**Significant weather reported during past 24 hours till 0830 hours IST of today:**

**Rainfall/snowfall recorded (in cm)**

- ❖ **Kerala & Mahe:** Kottayam (dist Kottayam) 6, Thycattussery (dist Alapuzha) 3, Thiruvananthapuram (dist Thiruvananthapuram) 1;
- ❖ **Arunachal Pradesh:** Taksing AWS (dist Upper Subansiri) 1, Tenali AWS (dist Upper Siang) 1, Jung\_arg (dist Tawang) 1;
- ❖ **Sub-Himalayan West Bengal & Sikkim:** Mangan (dist Mangan) 1, Kabi (dist Mangan) 1

- ❖ Maximum temperatures were in the range of 35-40°C at many places over Telangana, Tamil Nadu, Kerala & Mahe, Andhra Pradesh, Maharashtra and at a few places over North Interior Karnataka, Odisha, Gujarat state; 30 -35°C at many places over Madhya Pradesh and at a few places over Rajasthan, Chhattisgarh, Gangetic West Bengal; 25-30°C at many places over remaining parts of plains of Northwest India & East India. Yesterday, the highest maximum temperature of **41.2°C** was reported at **Yavatmal (Vidarbha)** over the country.
- ❖ During the past 24 hours, maximum temperatures had fallen by 1-4°C at some places over Coastal Andhra Pradesh & Yanam; at isolated places over Uttarakhand, Nagaland, Manipur, Mizoram & Tripura and Tamilnadu, Puducherry & Karaikal. It had risen by 1-4°C at many places over Northwest, Central & East India and Gujarat State; at some places over Assam, North Interior Karnataka & Telangana; at isolated places over Maharashtra.
- ❖ Maximum temperatures were **markedly above normal (5°C or more)** at isolated places over Konkan & Goa; **appreciably above normal (3°C to 5°C)** at many places over Saurashtra & Kutch; at a few places over Rajasthan, Gujarat Region and Coastal Karnataka; at isolated places over Jammu-Kashmir-Ladakh-Gilgit-Baltistan-Muzaffarabad and West Madhya Pradesh; **above normal (1°C to 3°C)** at a few places over Himachal Pradesh, Madhya Maharashtra, Interior Karnataka, Telangana and Tamil Nadu, Puducherry & Karaikal; at isolated places over Uttarakhand, East Madhya Pradesh, Marathwada, Vidarbha, Odisha, Gangetic West Bengal and Coastal Andhra Pradesh & Yanam. These were **appreciably below normal (-3°C -5°C)** at isolated places over East Uttar Pradesh and Bihar; **below normal (-3°C to -1°C)** at a few places over Jharkhand; at isolated places over Nagaland, Manipur, Mizoram & Tripura and Andaman & Nicobar Islands and near normal over rest parts of the country.

Fig. 1: Maximum Temperatures

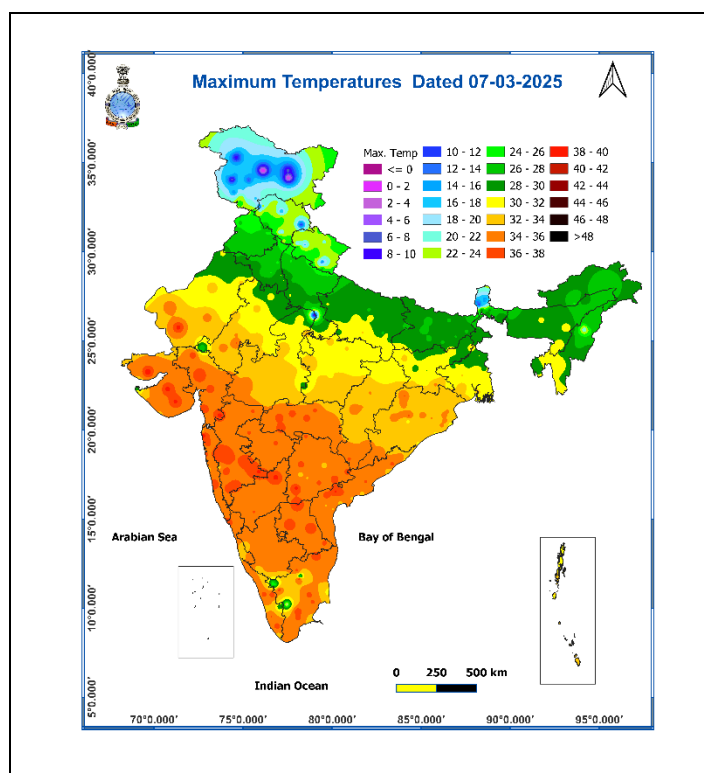
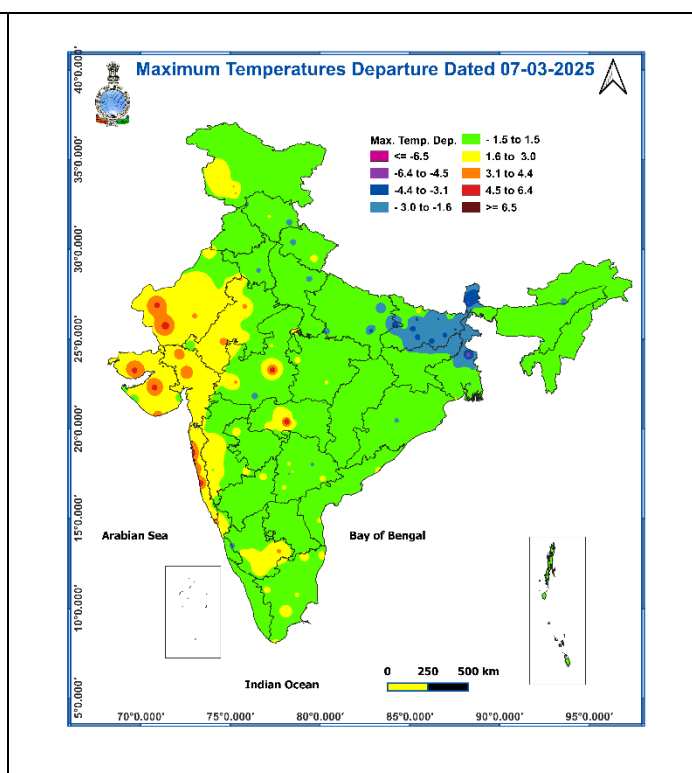


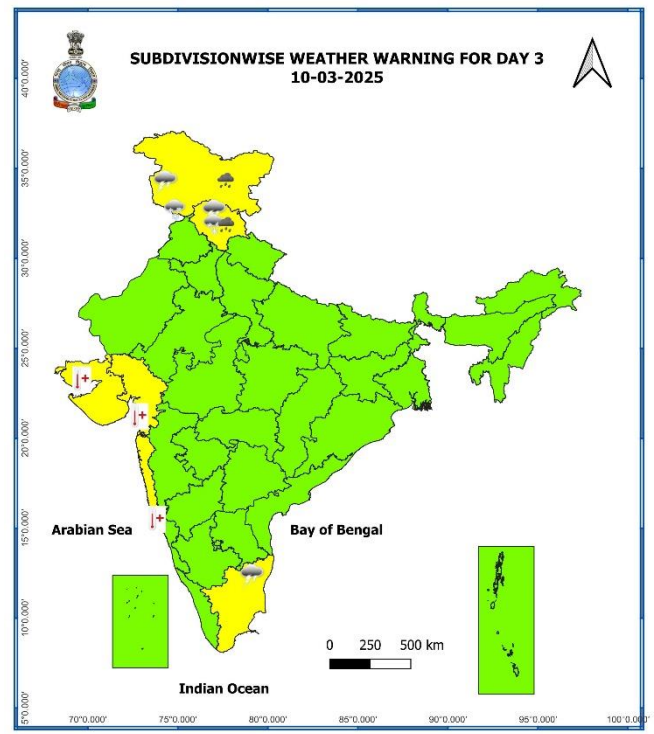
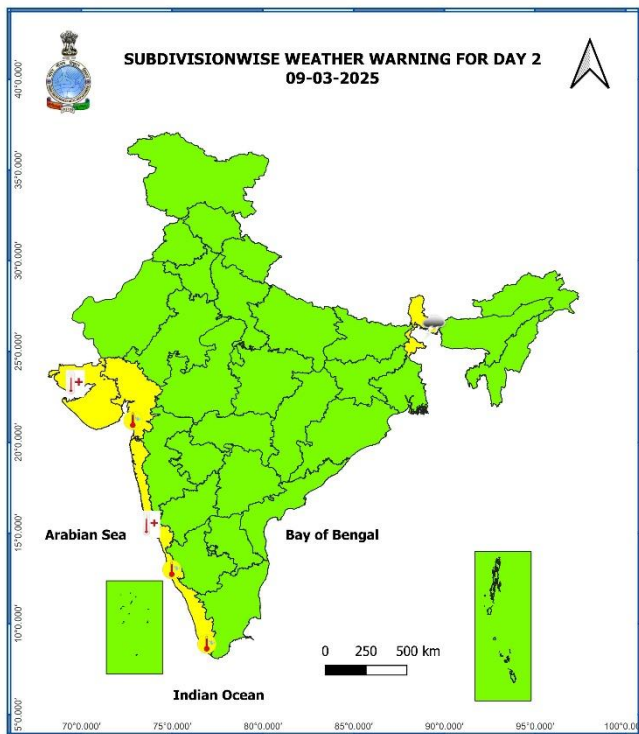
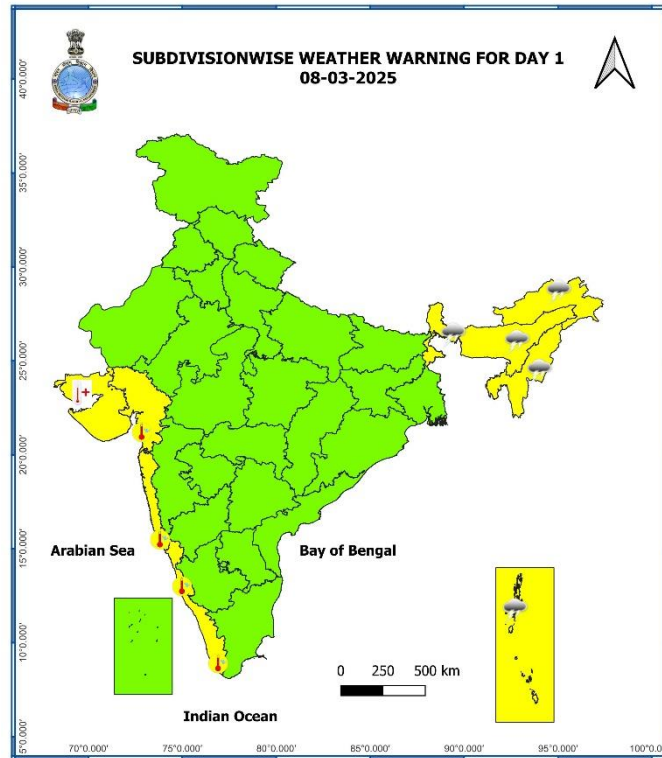
Fig. 2: Departure of Maximum Temperatures

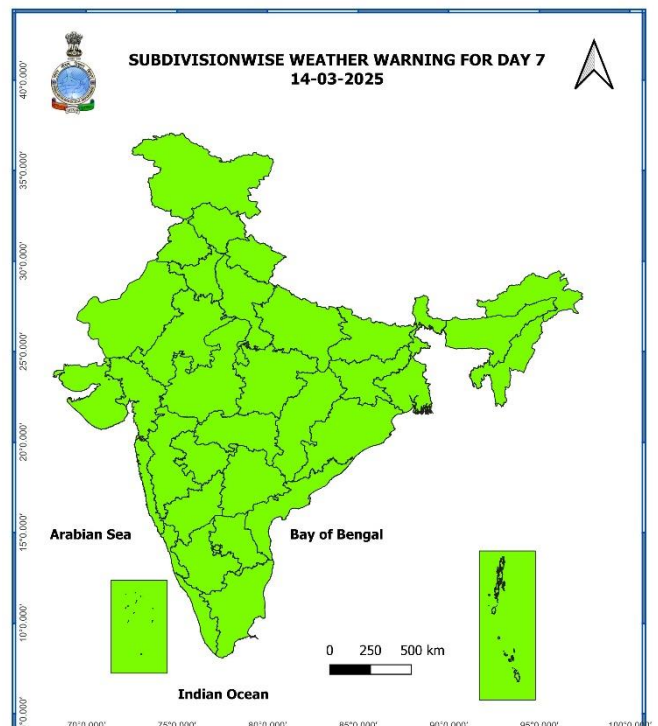
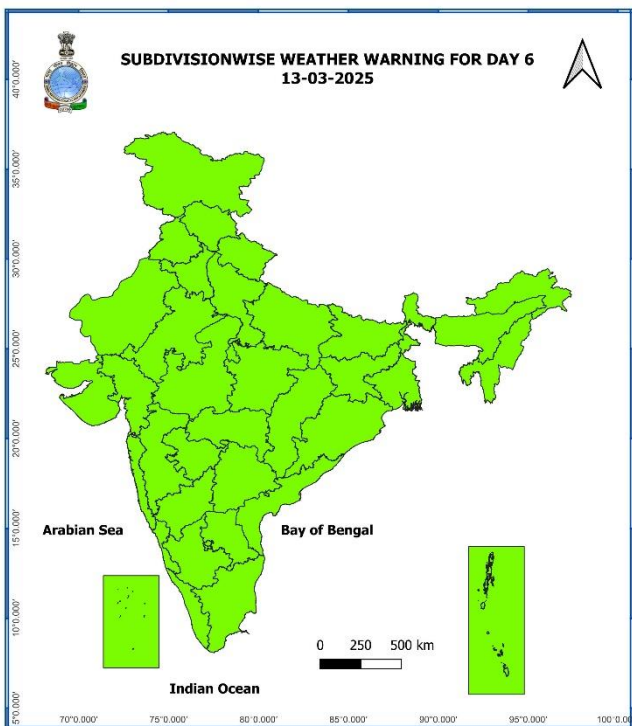
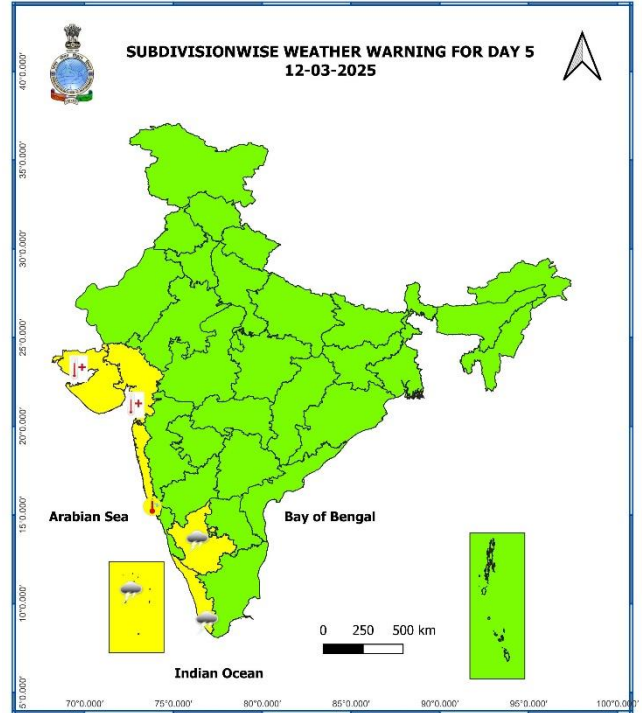
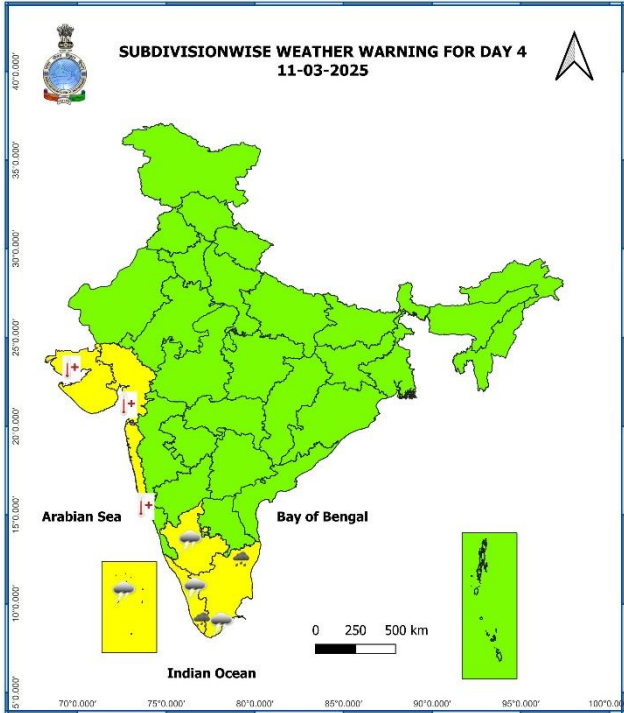


## 7 Days Rainfall Forecast

S. No.	Subdivision	08-Mar	09-Mar	10-Mar	11-Mar	12-Mar	13-Mar	14-Mar
		Day 1	Day 2	Day 3	Day 4	Day 5	Day 6	Day 7
1	ANDAMAN & NICOBAR ISLANDS	FWS	WS	FWS	SCT	SCT	SCT	FWS
2	ARUNACHAL PRADESH	SCT	ISOL	ISOL	FWS	FWS	FWS	SCT
3	ASSAM & MEGHALAYA	ISOL	DRY	DRY	ISOL	SCT	SCT	SCT
4	NAGALAND, MANIPUR, MIZORAM & TRIPURA	ISOL	DRY	DRY	ISOL	ISOL	SCT	SCT
5	SUB-HIMALAYAN WEST BENGAL & SIKKIM	SCT	ISOL	ISOL	ISOL	ISOL	ISOL	ISOL
6	GANGETIC WEST BENGAL	DRY	DRY	DRY	DRY	DRY	DRY	DRY
7	ODISHA	DRY	DRY	DRY	DRY	DRY	DRY	DRY
8	JHARKHAND	DRY	DRY	DRY	DRY	DRY	DRY	DRY
9	BIHAR	DRY	DRY	DRY	DRY	DRY	DRY	DRY
10	EAST UTTAR PRADESH	DRY	DRY	DRY	DRY	DRY	DRY	DRY
11	WEST UTTAR PRADESH	DRY	DRY	DRY	DRY	DRY	DRY	ISOL
12	UTTARAKHAND	DRY	DRY	ISOL	ISOL	ISOL	SCT	SCT
13	HARYANA CHANDIGARH & DELHI	DRY	DRY	DRY	DRY	DRY	ISOL	ISOL
14	PUNJAB	DRY	DRY	DRY	DRY	ISOL	ISOL	ISOL
15	HIMACHAL PRADESH	DRY	ISOL	SCT	SCT	FWS	FWS	FWS
16	JAMMU & KASHMIR AND LADAKH	DRY	ISOL	FWS	SCT	FWS	FWS	SCT
17	WEST RAJASTHAN	DRY	DRY	DRY	DRY	DRY	DRY	DRY
18	EAST RAJASTHAN	DRY	DRY	DRY	DRY	DRY	DRY	DRY
19	WEST MADHYA PRADESH	DRY	DRY	DRY	DRY	DRY	DRY	DRY
20	EAST MADHYA PRADESH	DRY	DRY	DRY	DRY	DRY	DRY	DRY
21	GUJARAT REGION	DRY	DRY	DRY	DRY	DRY	DRY	DRY
22	SAURASHTRA & KUTCH	DRY	DRY	DRY	DRY	DRY	DRY	DRY
23	KONKAN & GOA	DRY	DRY	DRY	DRY	DRY	DRY	DRY
24	MADHYA MAHARASHTRA	DRY	DRY	DRY	DRY	DRY	DRY	DRY
25	MARATHAWADA	DRY	DRY	DRY	DRY	DRY	DRY	DRY
26	VIDARBHA	DRY	DRY	DRY	DRY	DRY	DRY	DRY
27	CHHATTISGARH	DRY	DRY	DRY	DRY	DRY	DRY	DRY
28	COASTAL ANDHRA PRADESH & YANAM	DRY	DRY	DRY	DRY	DRY	DRY	DRY
29	TELANGANA	DRY	DRY	DRY	DRY	DRY	DRY	DRY
30	RAYALASEEMA	DRY	DRY	DRY	DRY	DRY	DRY	DRY
31	TAMILNADU PUDUCHERRY & KARAIKAL	DRY	DRY	ISOL	FWS	ISOL	ISOL	DRY
32	COASTAL KARNATAKA	DRY	DRY	DRY	DRY	ISOL	ISOL	ISOL
33	NORTH INTERIOR KARNATAKA	DRY	DRY	DRY	DRY	DRY	DRY	DRY
34	SOUTH INTERIOR KARNATAKA	DRY	DRY	ISOL	ISOL	ISOL	ISOL	ISOL
35	KERALA & MAHE	ISOL	ISOL	ISOL	SCT	SCT	ISOL	ISOL
36	LAKSHADWEEP	DRY	DRY	DRY	WS	FWS	DRY	DRY

- As the lead period increases forecast accuracy decreases.





- Action may be taken based on ORANGE AND RED COLOUR warnings.
- Vulnerable regions likely urban and hilly areas action may be initiated for heavy rainfall warning.
- As the lead period increases forecast accuracy decreases.

Detailed district wise Multi Hazard weather warning for next five days available at <https://mausam.imd.gov.in/responsive/districtWiseWarningGIS.php>

**Weather forecast over Delhi/NCR during 08<sup>th</sup> Mar. to 11<sup>th</sup> Mar. 2025****Past Weather:**

There has been a rise in minimum temperatures up to 3°C and rise in maximum temperatures up to 1°C over Delhi/NCR during the past 24 hours. The maximum and minimum temperatures over Delhi are in the range of 28 to 30°C and 12 to 13°C, respectively. The minimum and maximum temperatures were near normal in most places. Mainly clear sky conditions with predominant surface wind from the northwest direction with wind speeds less than 14 to 16 kmph prevailed during the past 24 hours. Mainly clear sky conditions with wind speed less than 10 kmph from the northwest direction prevailed over the region in the forenoon today.

**Weather Forecast:**

**08.03.2025:** Mainly clear sky. The maximum temperature over Delhi is likely to be in the range of 30 to 32°C. The predominant surface wind will likely be from the northwest direction with a wind speed of less than 12 kmph till evening. It would decrease thereafter becoming less than 06 kmph from the northeast direction during the night.

**09.03.2025:** Partly cloudy sky. Mist likely in the morning. The maximum and minimum temperatures over Delhi are likely to be in the range of 31 to 33°C and 14 to 16°C, respectively. The predominant surface wind will likely be from the southeast direction with a wind speed of 04-06 kmph during morning hours. The wind speed will gradually increase thereafter becoming, 08-10 kmph from the southeast direction during the afternoon. It will decrease becoming less than 06 kmph from the east direction during evening and night.

**10.03.2025:** Partly cloudy sky. Mist likely in the morning. The maximum and minimum temperatures over Delhi are likely to be in the range of 31 to 33°C and 15 to 17°C, respectively. The predominant surface wind will likely be from the southeast direction with a wind speed of 06-08 kmph during morning hours. The wind speed will gradually decrease becoming 04-06 kmph from the southeast direction in the afternoon. It will decrease becoming less than 06 kmph from the east direction during evening and night.

**11.03.2025:** Mainly clear sky. Mist likely in the morning. Strong surface winds (speed 20-30 kmph). The maximum and minimum temperatures over Delhi are likely to be in the range of 32 to 34°C and 15 to 17°C, respectively. The predominant surface wind will likely be from the east direction with a wind speed of 04-06 kmph during morning hours. The wind speed will gradually increase becoming 14-16 kmph from the northwest direction in the afternoon. It will decrease becoming less than 12 kmph from the northwest direction during evening and night.

**Agromet advisories for likely impact of Heavy Rainfall / Heat Wave**

- Make provision for draining out excess water from standing crop fields and vegetables in **Jammu & Kashmir, Himachal Pradesh, Tamil Nadu and Kerala.**
- In **Gujarat and Konkan**, apply light and frequent irrigation to the standing crops, vegetables and orchards in the evening to protect them from heat wave.
- Keep the harvested produce in safer places or cover the produce with tarpaulin sheets in the fields.
- Provide mechanical support to horticultural crops and staking to vegetables to avoid lodging.

**Livestock**

- Keep the animals inside the shed during heavy rainfall and provide them balanced feed.
- Store feed and fodder in a safe place to prevent spoilage.
- To reduce the effect of heat wave/high temperature, cover the roof of poultry sheds with grass. Also provide clean, hygienic and plenty of drinking water to animals.

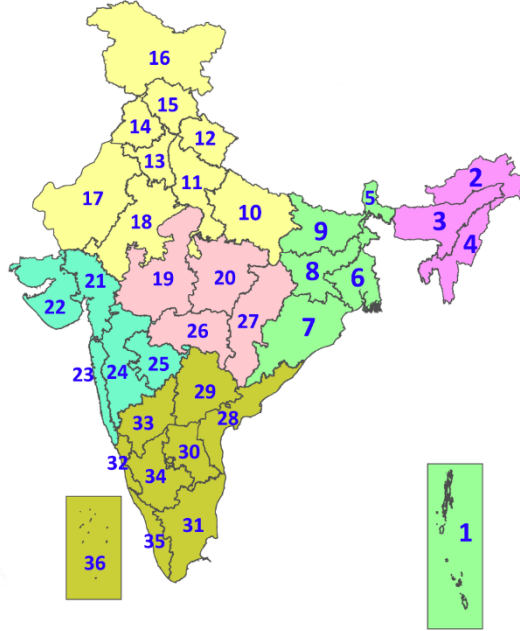
## Legends & abbreviations:

- ❖ **Heavy Rain:**64.5-115.5mm; **Very Heavy Rain:**115.6-204.4mm; **Extremely Heavy Rain:** >204.4mm.
- ❖ **Obsy:** Observatory; **AWS:** Automatic Weather Station; **ARG:** Automatic Rain Gauge; **dist:** District; **NH:** National Highway; **KVK:** Krishi Vigyan Kendra; **DVC:** Damodar Valley Corporation; **PTO:** Part Time Office, **Aero:** Aerodrome, **IAF:** Indian Air Force.
- ❖ **Region wise classification of meteorological Sub-Divisions:**
  - **Northwest India:** Western Himalayan Region (Jammu-Kashmir-Ladakh-Gilgit-Baltistan-Muzaffarabad, Himachal Pradesh and Uttarakhand); Punjab, Haryana-Chandigarh-Delhi; West Uttar Pradesh, East Uttar Pradesh, West Rajasthan and East Rajasthan.
  - **Central India:** West Madhya Pradesh, East Madhya Pradesh, Vidarbha and Chhattisgarh.
  - **East India:** Bihar, Jharkhand, Sub-Himalayan West Bengal & Sikkim; Gangetic West Bengal, Odisha and Andaman & Nicobar Islands.
  - **Northeast India:** Arunachal Pradesh, Assam & Meghalaya and Nagaland, Manipur, Mizoram & Tripura.
  - **West India:** Gujarat Region, Saurashtra & Kutch, Konkan & Goa, Madhya Maharashtra and Marathawada.
  - **South India:** Coastal Andhra Pradesh & Yanam, Telangana, Rayalaseema, Coastal Karnataka, North Interior Karnataka, South Interior Karnataka, Kerala & Mahe, Tamil Nadu, Puducherry & Karaikal and Lakshadweep.



## LEGENDS

1. अंडमान और निकोबार द्वीपसमूह
2. अरुणाचल प्रदेश
3. असम और मेघालय
4. नागालैंड, मणिपुर, मिजोरम और त्रिपुरा
5. उप-हिमालयी पश्चिम बंगाल और सिक्किम
6. गंगीय पश्चिम बंगाल
7. ओडिशा
8. झारखंड
9. बिहार
10. पूर्वी उत्तर प्रदेश
11. पश्चिम उत्तर प्रदेश
12. उत्तराखंड
13. हरियाणा, चंडीगढ़ और दिल्ली
14. पंजाब
15. हिमाचल प्रदेश
16. जम्मू और कश्मीर और लद्दाख
17. पश्चिम राजस्थान
18. पूर्वी राजस्थान
19. पश्चिम मध्य प्रदेश
20. पूर्वी मध्य प्रदेश
21. गुजरात
22. सौराष्ट्र
23. कोंकण और गोवा
24. मध्य महाराष्ट्र
25. मराठवाड़ा
26. विदर्भ
27. छत्तीसगढ़
28. तटीय आंध्र प्रदेश और यनम
29. तेलंगाना
30. रायलसीमा
31. तमिलनाडु, पुडुचेरी और कराईकल
32. तटीय कर्नाटक
33. आंतरिक उत्तरी कर्नाटक
34. आंतरिक दक्षिणी कर्नाटक
35. केरल और माहे
36. लक्षद्वीप



1. Andaman & Nicobar Islands
2. Arunachal Pradesh
3. Assam & Meghalaya
4. Nagaland, Manipur, Mizoram & Tripura
5. Sub-Himalayan West Bengal & Sikkim
6. Gangetic West Bengal
7. Odisha
8. Jharkhand
9. Bihar
10. East Uttar Pradesh
11. West Uttar Pradesh
12. Uttarakhand
13. Haryana, Chandigarh & Delhi
14. Punjab
15. Himachal Pradesh
16. Jammu & Kashmir and Ladakh
17. West Rajasthan
18. East Rajasthan
19. West Madhya Pradesh
20. East Madhya Pradesh
21. Gujarat
22. Saurashtra
23. Konkan & Goa
24. Madhya Maharashtra
25. Marathwada
26. Vidarbha
27. Chhattisgarh
28. Coastal Andhra Pradesh & Yanam
29. Telangana
30. Rayalaseema
31. Tamilnadu, Puducherry & Karaikal
32. Coastal Karnataka
33. North Interior Karnataka
34. South Interior Karnataka
35. Kerala & Mahe
36. Lakshadweep

## SPATIAL DISTRIBUTION (% of Stations reporting)

% Stations	Category	% Stations	Category
76-100	Widespread (WS/Most Places)	26-50	Scattered (SCT/A Few Places)
51-75	Fairly Widespread (FWS/Many Places)	1-25	Isolated (ISOL)

- |                      |                      |              |
|----------------------|----------------------|--------------|
| Fog                  | Heavy Snow           | Cold Wave    |
| Heavy Rain           | Dust Storm           | Cold Day     |
| Very Heavy Rain      | Heat Wave            | Ground Frost |
| Extremely Heavy Rain | Warm Night           |              |
| Thunder & Lightning  | Hot Day              |              |
| Hailstorm            | Hot & Humid          |              |
| Dust Raising Winds   | Strong Surface Winds |              |

### COLOUR CODED WARNING

No Warning (No Action)
Watch (Be Aware)
Alert (Be Prepared To Take Action)
Warning (Take Action)

### Probabilistic Forecast

Terms	Probability of Occurrence (%)
Unlikely	< 25
Likely	25 - 50
Very Likely	50 - 75
Most Likely	> 75

\* Red colour warning does not mean "Red Alert", Red colour warning means "Take Action".  
Forecast and Warning for any day is valid from 0830 hours IST of day till 0830 hours IST of next day.  
For more details, kindly visit <https://mausam.imd.gov.in> or contact: 011-2434-4599  
(Service to the Nation since 1875)

## DEFINITION/CRITERIA

<b>Rain/ Snow *</b>	<b>Heavy:</b> 64.5 to 115.5 mm/cm * <b>Very Heavy:</b> 115.6 to 204.4 mm/cm * <b>Extremely Heavy:</b> > 204.4 mm/cm *
<b>Heat Wave</b>	<b>When maximum temperature of a station reaches <math>\geq 40^{\circ}\text{C}</math> for plains and <math>\geq 30^{\circ}\text{C}</math> for hilly regions</b> <b>(a) Based on Departure from normal</b> <b>Heat Wave:</b> Maximum Temperature Departure from normal $4.5^{\circ}\text{C}$ to $6.4^{\circ}\text{C}$ . <b>Severe Heat Wave:</b> Maximum Temperature Departure from normal $\geq 6.5^{\circ}\text{C}$ <b>(b). Based on Actual maximum temperature</b> <b>Heat Wave:</b> When actual maximum temperature $\geq 45^{\circ}\text{C}$ . <b>Severe Heat Wave:</b> When actual maximum temperature $\geq 47^{\circ}\text{C}$ <b>(c). Criteria for heat wave for coastal stations</b> When maximum temperature departure is $> 4.5^{\circ}\text{C}$ from normal. Heat Wave may be described provided maximum temperature $\geq 37^{\circ}\text{C}$
<b>Warm Night</b>	<b>When maximum temperature remains <math>40^{\circ}\text{C}</math></b> <b>Warm Night:</b> When minimum temperature departure $4.5^{\circ}\text{C}$ to $6.4^{\circ}\text{C}$ . <b>Severe Warm Night:</b> When minimum temperature departure $> 6.4^{\circ}\text{C}$ .
<b>Cold Wave</b>	<b>When minimum temperature of a station <math>\leq 10^{\circ}\text{C}</math> for plains and <math>\leq 0^{\circ}\text{C}</math> for hilly regions.</b> <b>(a). Based on departure</b> <b>Cold Wave:</b> Minimum Temperature Departure from normal $-4.5^{\circ}\text{C}$ to $-6.4^{\circ}\text{C}$ . <b>Severe Cold Wave:</b> Minimum Temperature Departure from normal $\leq -6.5^{\circ}\text{C}$ <b>(b) Based on actual Minimum Temperature (for Plains only)</b> <b>Cold Wave :</b> When Minimum Temperature is $\leq 4.0^{\circ}\text{C}$ <b>Severe Cold Wave:</b> When Minimum Temperature is $\leq 2.0^{\circ}\text{C}$ <b>(c) For Coastal Stations</b> When Minimum Temperature departure is $\leq -4.5^{\circ}\text{C}$ & actual Minimum Temperature is $\leq 15^{\circ}\text{C}$
<b>Cold Day</b>	<b>When minimum temperature of a station <math>\leq 10^{\circ}\text{C}</math> for plains and <math>\leq 0^{\circ}\text{C}</math> for hilly regions</b> <b>Based on departure</b> <b>Cold Day:</b> Maximum Temperature Departure from normal $-4.5^{\circ}\text{C}$ to $-6.4^{\circ}\text{C}$ . <b>Severe Cold Day:</b> Maximum Temperature Departure from normal $\leq -6.5^{\circ}\text{C}$
<b>Fog</b>	<b>Phenomenon of small droplets suspended in air and the horizontal visibility <math>&lt; 1\text{km}</math></b> <b>Moderate Fog:</b> When the visibility between 500-200 metres <b>Dense Fog:</b> when the visibility between 50- 200 metres <b>Very Dense Fog:</b> when the visibility $< 50$ metres
<b>Thunderstorm</b>	Sudden electrical discharges manifested by a flash of light (Lightning) and a sharp rumbling sound (thunder)
<b>Dust/Sand Storm</b>	An ensemble of particles of dust or sand energetically lifted to great heights by a strong and turbulent wind.
<b>Frost</b>	<b>Ice deposits on ground</b> Air temperature $\leq 4^{\circ}\text{C}$ ( over Plains)
<b>Squall</b>	<b>A strong wind that rises suddenly, lasts for atleast 1 minute.</b> <b>Moderate:</b> Wind speed 52-61 kmph <b>Severe:</b> Wind speed 62-87 kmph <b>Very Severe:</b> Wind speed $> 87$ kmph
<b>Sea State</b>	<b>Effect of various waves in the sea over specific area</b> <b>Rough to very rough:</b> Wind speed 41-62 kmph (22-33 knots) & Wave height 2.5-6 metre <b>High to very high:</b> Wind speed 63-117 kmph ( 34-63 knots) & Wave height 6-14 metre <b>Phenomenal:</b> Wind speed $> 117$ kmph ( $> 63$ knots) & Wave height $> 14$ metre
<b>Cyclone</b>	<b>Cyclonic Storm:</b> Wind speed 62-87 kmph (34-47 knots) <b>Severe Cyclonic Storm:</b> Wind speed 88-117 kmph (48-63 knots) <b>Very Severe Cyclonic Storm:</b> Wind speed 118-165 kmph (64 - 89 knots) <b>Extremely Severe Cyclonic Storm:</b> Wind speed 166-220 kmph (90 -119 knots) <b>Super Cyclone Strom:</b> Wind speed $> 220$ kmph ( $> 119$ knots)

\* Red colour warning does not mean "Red Alert", Red colour warning means "Take Action".  
 Forecast and Warning for any day is valid from 0830 hours IST of day till 0830 hours IST of next day.  
 For more details, kindly visit <https://mausam.imd.gov.in> or contact: 011-2434-4599  
 (Service to the Nation since 1875)

**Hot and Humid:** When maximum temperatures remain  $3^{\circ}\text{C}$  above normal along with the above normal relative humidity.