

Government of India  
Ministry of Earth Sciences  
India Meteorological Department



Press Release

Date: 11<sup>th</sup> March, 2025

Time of Issue: 1330 hours IST

**Subject: i) Heat to severe heat wave spell likely over Gujarat State & Southwest Rajasthan on 11<sup>th</sup> & 12<sup>th</sup>; heat wave over Vidarbha on 13<sup>th</sup> & 14<sup>th</sup> and Odisha during 13<sup>th</sup>-15<sup>th</sup> March, 2025.**

**ii) Wet spell likely to continue over Western Himalayan region and Arunachal Pradesh during 11<sup>th</sup>-17<sup>th</sup> and over plains of Northwest India from 12<sup>th</sup>-15<sup>th</sup> March, 2025.**

**i. Realised weather during past 24 hours till 0830 hours IST of today, the 11<sup>th</sup> March 2025:**

- ❖ Light to moderate **Rainfall/Snowfall** occurred at most places over Jammu-Kashmir-Ladakh-Gilgit-Baltistan-Muzaffarabad; at isolated places over Himachal Pradesh, Uttarakhand, Arunachal Pradesh, Sub-Himalayan West Bengal & Sikkim; Light rainfall at isolated places over Punjab, Assam & Meghalaya, Tamilnadu Puducherry & Karaikal and Kerala & Mahe.
- ❖ **Thunderstorm with lightning** reported at isolated places over Himachal Pradesh (Sunder Nagar) and Tamilnadu Puducherry & Karaikal.
- ❖ **Heat Wave** at many places with Severe heat wave at a few places has been recorded over Saurashtra & Kutch.
- ❖ **For more details of realised weather, kindly refer Annexure I**

**Temperature:**

- ❖ For temperature observations during past 24 hours till 0830 hours IST of today are provided in **Annexure II**

**ii. Forecast for Holi:** Generally cloudy sky with possibility of isolated light rain over plains of Northwest India on 14<sup>th</sup> March. Fairly widespread to widespread light to moderate rainfall/snowfall over Jammu-Kashmir-Ladakh-Gilgit-Baltistan-Muzaffarabad & Himachal Pradesh; states of Northeast India; at a few places over Uttarakhand & Sub-Himalayan West Bengal & Sikkim on 14<sup>th</sup> March and dry weather mainly over remaining parts of the country.

**iii. Weather Systems, Forecast and Warnings (Annexure III & IV):**

- ❖ The **Western Disturbance** seen as a cyclonic circulation over West Iran in lower to upper tropospheric levels. An cyclonic circulation lies over southwest Rajasthan & neighbourhood at lower tropospheric levels. Under the influence of these systems;
  - ✓ **Fairly widespread to widespread light/moderate rainfall/snowfall accompanied with thunderstorm & lightning** likely over Jammu-Kashmir-Ladakh-Gilgit-Baltistan-Muzaffarabad and Himachal Pradesh during 11<sup>th</sup>-16<sup>th</sup>; **Scattered to fairly widespread light/moderate rainfall/snowfall accompanied with thunderstorm & lightning** likely over Uttarakhand during 12<sup>th</sup>-16<sup>th</sup> March.
  - ✓ **Isolated heavy rainfall/snowfall very likely over** Jammu-Kashmir-Ladakh-Gilgit-Baltistan-Muzaffarabad and Himachal Pradesh on 14<sup>th</sup> March.
  - ✓ **Isolated light/moderate rainfall** likely over Punjab during 12<sup>th</sup>-15<sup>th</sup>; Haryana, West Uttar Pradesh and Rajasthan during 13<sup>th</sup>-15<sup>th</sup>; East Uttar Pradesh on 15<sup>th</sup> March.
  - ✓ **Thunderstorm activity** likely over Punjab, Haryana, West Uttar Pradesh on 13<sup>th</sup> & 14<sup>th</sup> March.
- ❖ A **trough** runs roughly along Long. 93°E to the north of Lat. 23°N in lower tropospheric levels and another trough runs roughly along Long. 82°E to the north of Lat. 23°N in middle tropospheric levels. Under the influence of these systems;
  - ✓ **Fairly widespread to widespread light/moderate rainfall/snowfall** accompanied with **thunderstorm & lightning** likely over Arunachal Pradesh during 11<sup>th</sup>-15<sup>th</sup>; **Scattered to fairly widespread** light/moderate rainfall/snowfall accompanied with **thunderstorm, lightning & gusty winds (speed 30-40 kmph)** likely

over Sub-Himalayan West Bengal & Sikkim on 11<sup>th</sup> & 12<sup>th</sup>; Assam & Meghalaya on 11<sup>th</sup>, 14<sup>th</sup> & 15<sup>th</sup>; Nagaland, Manipur, Mizoram & Tripura during 11<sup>th</sup>-16<sup>th</sup> with **gusty winds increasing to (speed 40-50 kmph)** over Assam & Meghalaya on 12<sup>th</sup> & 13<sup>th</sup> March; with **thunderstorm & lightning** over Sub-Himalayan West Bengal & Sikkim on 13<sup>th</sup> March.

- ✓ **Isolated Heavy rainfall likely over Arunachal Pradesh during 11<sup>th</sup>-17<sup>th</sup> and Assam & Meghalaya on 13<sup>th</sup> March with isolated very heavy rainfall on Arunachal Pradesh on 13<sup>th</sup> March.**
- ❖ Under the influence of easterly wave activity and a **trough** of low lies over Southwest Bay of Bengal off Tamil Nadu coast in lower tropospheric levels,
  - ✓ **Scattered to fairly widespread** light/moderate rainfall accompanied with **thunderstorm, lightning & gusty winds (speed 30-40 kmph)** likely over Kerala & Mahe on 11<sup>th</sup>; with **thunderstorm & lightning** over Tamilnadu, Puducherry & Karaikal on 11<sup>th</sup> & 12<sup>th</sup>; Kerala & Mahe on 12<sup>th</sup>; Lakshadweep on 11<sup>th</sup> & 12<sup>th</sup>; Isolated light/moderate rainfall accompanied with **thunderstorm & lightning** likely over South Interior Karnataka on 11<sup>th</sup> & 12<sup>th</sup> March.
  - ✓ **Isolated heavy to very heavy rainfall likely over south Tamil Nadu on 11<sup>th</sup> and heavy rainfall over Tamilnadu Puducherry & Karaikal on 12<sup>th</sup> and Kerala & Mahe on 11<sup>th</sup> & 12<sup>th</sup> March.**
  - ✓ Isolated to scattered light to moderate rainfall likely over Andaman & Nicobar Islands during next 7 days.

### Temperature Forecast:

#### Forecast of temperature:

##### Maximum temperature:

- ❖ No significant change in maximum temperatures likely over Northwest India during next 48 hours and gradual fall by 2-3°C thereafter.
- ❖ Gradual rise in maximum temperatures by 2-3°C likely over Central India & Maharashtra during next 3-4 days and no significant change thereafter.
- ❖ Gradual rise in maximum temperatures by 2-4°C likely over East India during next 4 days and no significant change thereafter.
- ❖ No significant change in maximum temperatures likely over Gujarat State during next 2 days and gradual fall by 2-4°C thereafter.
- ❖ No significant change in maximum temperatures likely over rest parts of the country.

#### Heat wave, Warm Night and Hot & Humid weather warning:

- ❖ **Heat Wave to severe heat wave conditions** very likely to prevail in isolated pockets over Gujarat State on 11<sup>th</sup>; **Heat wave conditions** in isolated pockets over Konkan on 11<sup>th</sup>; Gujarat State on 12<sup>th</sup>; Southwest Rajasthan on 11<sup>th</sup> & 12<sup>th</sup>; Vidarbha on 13<sup>th</sup> & 14<sup>th</sup>; Odisha during 13<sup>th</sup>-15<sup>th</sup> March.
- ❖ **Warm night conditions** very likely to prevail in isolated pockets over on Gujarat State on 11<sup>th</sup> March.
- ❖ **Hot and humid weather** very likely to prevail over north Kerala on 11<sup>th</sup>; Konkan on 12<sup>th</sup> and Coastal Karnataka on 11<sup>th</sup> & 12<sup>th</sup> March.

#### Fishermen Warnings:

- ❖ **Day 1 (11<sup>th</sup> March to 12<sup>th</sup> March): Squally weather with wind speed 35 kmph to 45 kmph gusting to 55 kmph** likely to prevail over along and off south Kerala coast and adjoining Lakshadweep, Maldives areas, over Comorin area, gulf of Mannar, along and off Tamil Nadu coast, along and off Sri Lanka coast. Fishermen are advised not to venture into these areas.
- ❖ **Day 2 (12<sup>th</sup> March to 13<sup>th</sup> March): Squally weather with wind speed 35 kmph to 45 kmph gusting to 55 kmph** likely to prevail over along and off south Kerala coast and adjoining Lakshadweep, Maldives areas, over Comorin area, gulf of manner. Fishermen are advised not to venture into these areas.

#### iv. Weather conditions and forecast over Delhi/NCR during 11<sup>th</sup> March to 14<sup>th</sup> March. 2025 (Annexure V)

For more details, kindly refer National Weather Bulletin:

[https://mausam.imd.gov.in/responsive/all\\_india\\_forecast\\_bulletin.php](https://mausam.imd.gov.in/responsive/all_india_forecast_bulletin.php)

For District wise warnings refer: <https://mausam.imd.gov.in/responsive/districtWiseWarningGIS.php>

### Significant weather reported during past 24 hours till 0830 hours IST of today:

#### Rainfall/snowfall recorded (in cm)

- ❖ **Jammu-Kashmir-Ladakh-Gilgit-Baltistan-Muzaffarabad:** Now gam (dist Kupwara) 3, Lolab (dist Kupwara) 3, Buhama (dist Kupwara) 2, Tengmarg (dist Baramula) 2, Kupwara Kvk Aws (dist Kupwara) 2

#### ANNEXURE II

- ❖ During the past 24 hours, maximum temperatures had fallen by 1-4°C at a few places over Jammu-Kashmir, Odisha and Interior Karnataka; at isolated places over Himachal Pradesh, Vidarbha, Marathawada, Madhya Maharashtra, Telangana, Rayalaseema and Tamilnadu Puducherry & Karaikal. It had risen by 1-4°C at many places over Gujarat State, Assam & Meghalaya, West Bengal & Sikkim; at a few places over Uttar Pradesh, Rajasthan, Madhya Pradesh, Bihar; at isolated places over Haryana, Coastal Andhra Pradesh & Yanam and Kerala & Mahe.
- ❖ Maximum temperatures were in the range of 40-45°C at many places over Gujarat State; 35-40°C at many places over Rajasthan, Central India, Maharashtra, Odisha, Kerala & Mahe; at a few places over Chhattisgarh, North Interior Karnataka, Tamilnadu, Puducherry & Karaikal; at isolated places over Jharkhand, Telangana & Rayalaseema; 30-35°C at many places over Uttar Pradesh, Bihar, Gangetic West Bengal, Coastal Andhra Pradesh & Yanam; at a few places over Assam & Meghalaya, Nagaland, Manipur, Mizoram & Tripura; at isolated places over Haryana- Chandigarh & Delhi. Yesterday, the highest **maximum temperature of 42.0°C** was reported at **Bhuj-Rudramata (Saurashtra & Kutch)** over the country.
- ❖ Maximum temperatures were **markedly above normal (5°C or more)** at many places over Rajasthan and Gujarat State; **appreciably above normal (3°C to 5°C)** at a few places over Madhya Pradesh and Konkan & Goa; at isolated places over East Rajasthan; **above normal (1°C to 3°C)** at a few places over Uttar Pradesh, West Bengal & Sikkim, Assam & Meghalaya, Odisha, Vidarbha & Madhya Maharashtra; at isolated places over Jammu-Kashmir, Himachal Pradesh, Uttarakhand, Haryana, Chandigarh & Delhi, Jharkhand, Marathawada, Nagaland, Manipur, Mizoram & Tripura, Tamilnadu Puducherry & Karaikal. These were **below normal (-3°C to -1°C)** at isolated places over Telangana, Rayalaseema and near normal over rest parts of the country.

Fig. 1: Maximum Temperatures

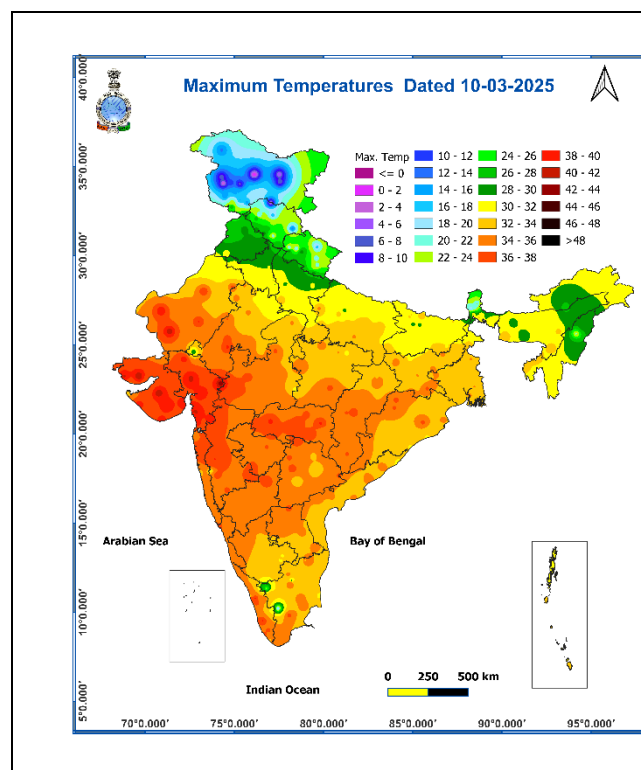
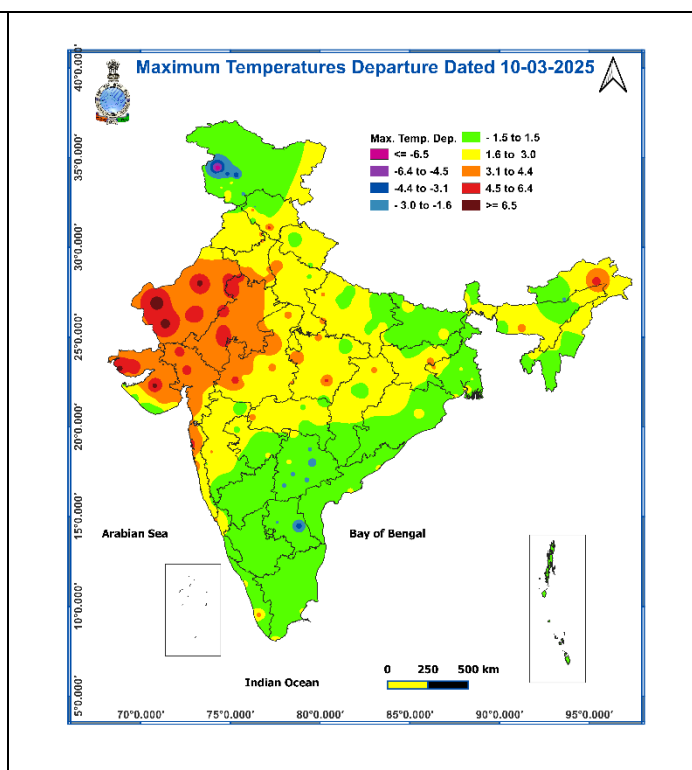


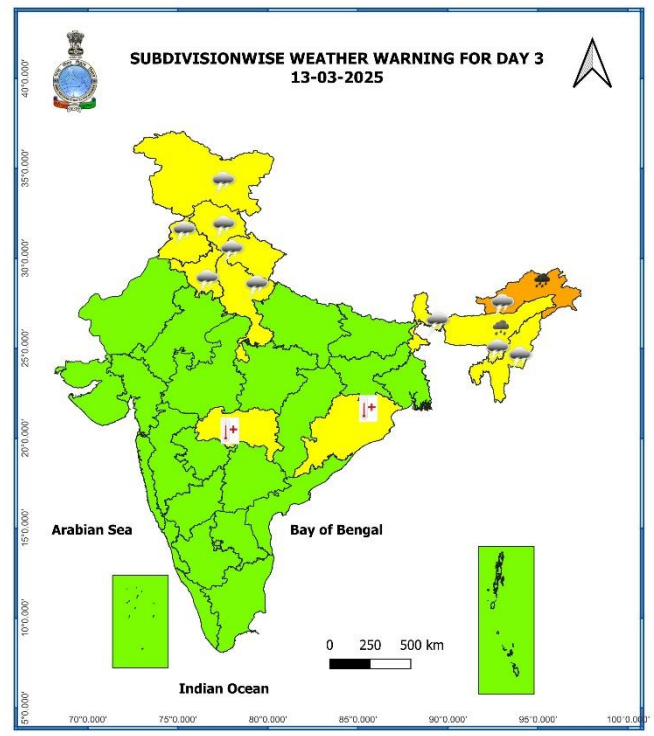
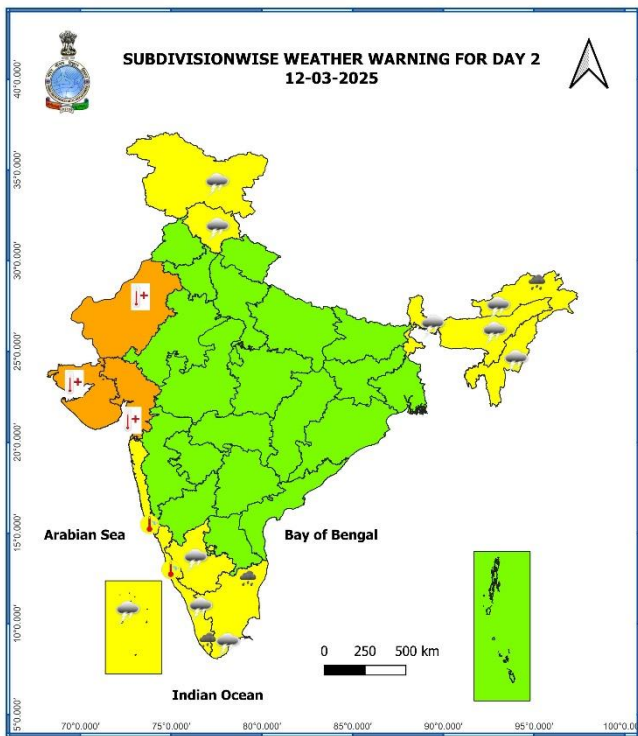
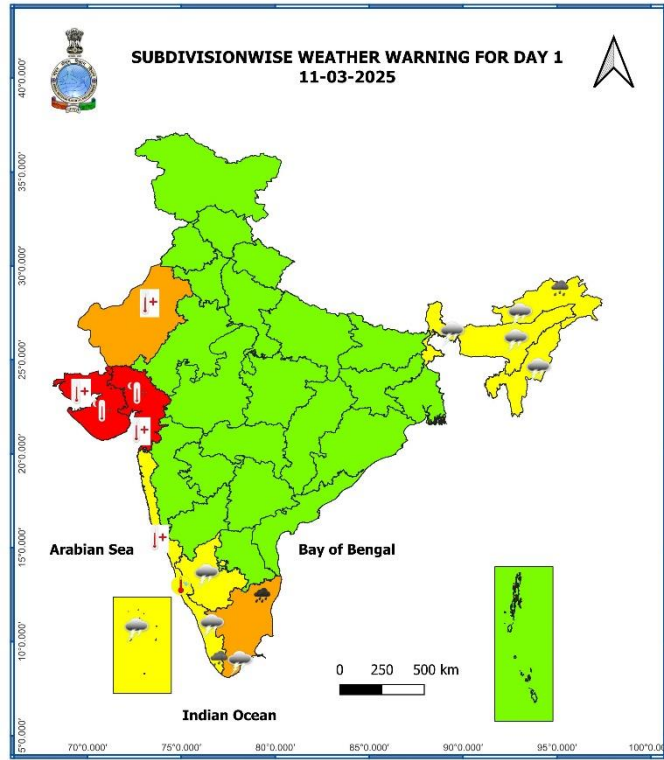
Fig. 2: Departure of Maximum Temperatures

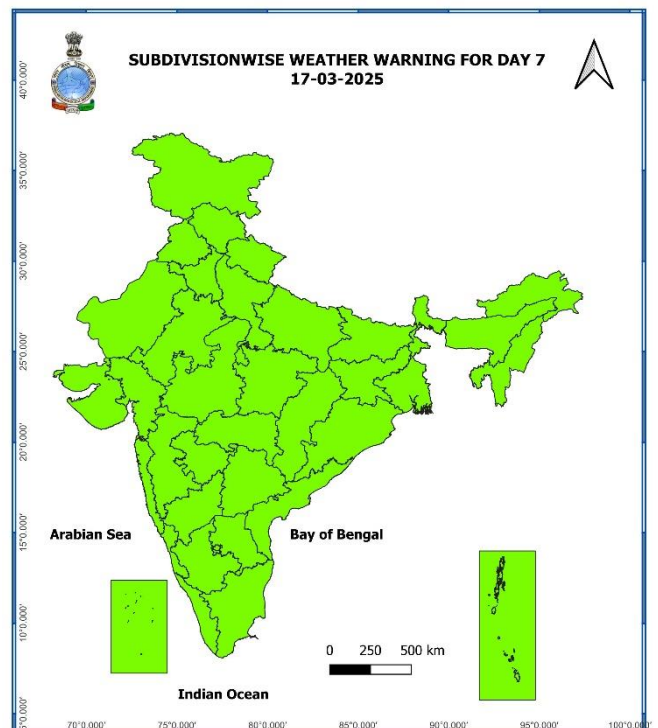
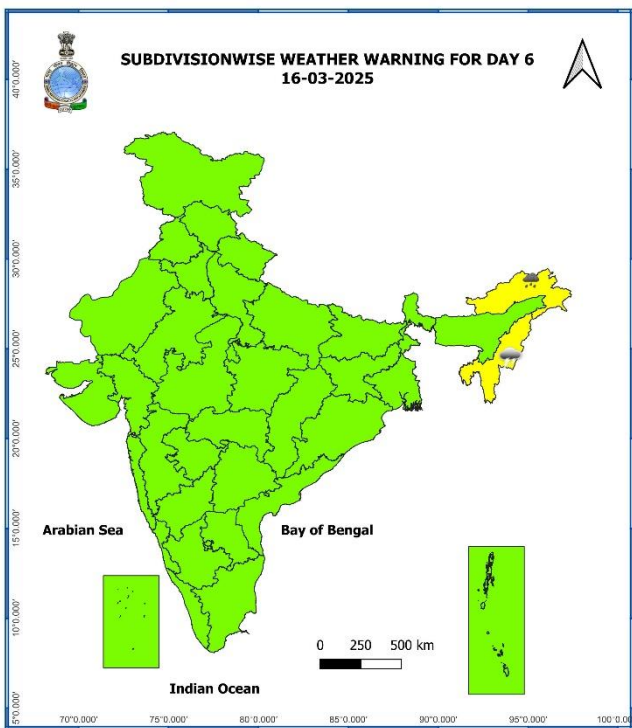
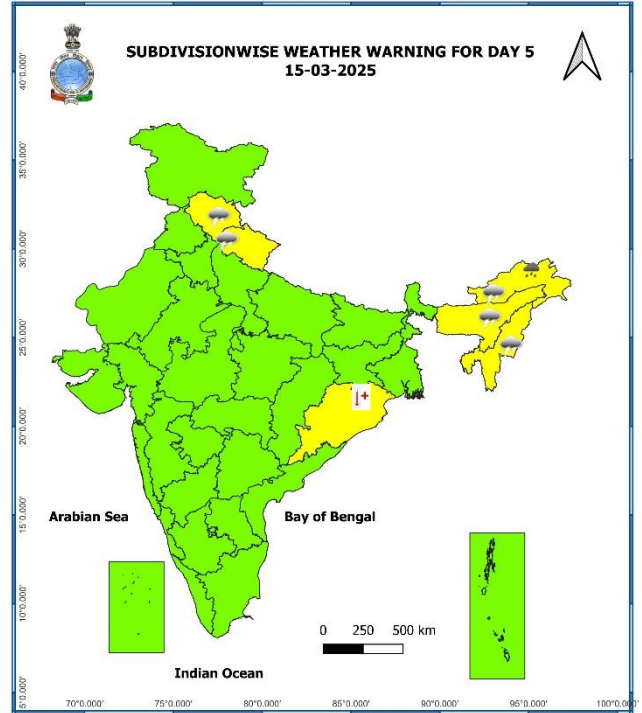
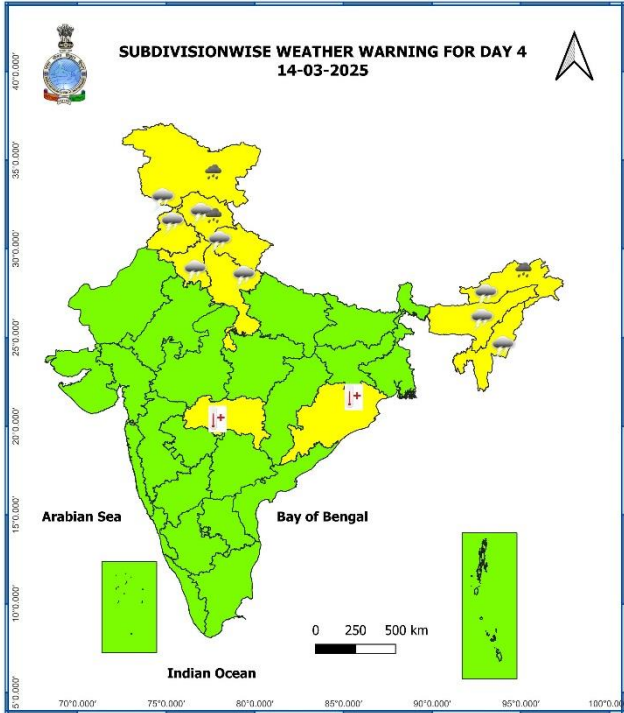


## 7 Days Rainfall Forecast

S. No.	Subdivision	11-Mar	12-Mar	13-Mar	14-Mar	15-Mar	16-Mar	17-Mar
		Day 1	Day 2	Day 3	Day 4	Day 5	Day 6	Day 7
1	ANDAMAN & NICOBAR ISLANDS	SCT	ISOL	ISOL	SCT	SCT	ISOL	ISOL
2	ARUNACHAL PRADESH	FWS	WS	WS	FWS	FWS	FWS	WS
3	ASSAM & MEGHALAYA	ISOL	SCT	FWS	FWS	SCT	SCT	SCT
4	NAGALAND, MANIPUR, MIZORAM & TRIPURA	ISOL	SCT	FWS	SCT	SCT	SCT	SCT
5	SUB-HIMALAYAN WEST BENGAL & SIKKIM	ISOL	FWS	SCT	ISOL	ISOL	ISOL	ISOL
6	GANGETIC WEST BENGAL	DRY	DRY	DRY	DRY	DRY	DRY	DRY
7	ODISHA	DRY	DRY	DRY	DRY	DRY	DRY	DRY
8	JHARKHAND	DRY	DRY	DRY	DRY	DRY	DRY	DRY
9	BIHAR	DRY	DRY	DRY	DRY	DRY	ISOL	DRY
10	EAST UTTAR PRADESH	DRY	DRY	DRY	DRY	ISOL	DRY	DRY
11	WEST UTTAR PRADESH	DRY	DRY	ISOL	ISOL	ISOL	DRY	DRY
12	UTTARAKHAND	ISOL	ISOL	SCT	SCT	FWS	FWS	ISOL
13	HARYANA CHANDIGARH & DELHI	DRY	DRY	ISOL	ISOL	ISOL	DRY	DRY
14	PUNJAB	DRY	ISOL	ISOL	ISOL	ISOL	DRY	DRY
15	HIMACHAL PRADESH	ISOL	SCT	FWS	WS	WS	FWS	ISOL
16	JAMMU & KASHMIR AND LADAKH	FWS	FWS	WS	WS	WS	FWS	ISOL
17	WEST RAJASTHAN	DRY	DRY	ISOL	ISOL	ISOL	DRY	DRY
18	EAST RAJASTHAN	DRY	DRY	ISOL	ISOL	ISOL	DRY	DRY
19	WEST MADHYA PRADESH	DRY	DRY	DRY	DRY	DRY	DRY	DRY
20	EAST MADHYA PRADESH	DRY	DRY	DRY	DRY	DRY	DRY	DRY
21	GUJARAT REGION	DRY	DRY	DRY	DRY	DRY	DRY	DRY
22	SAURASHTRA & KUTCH	DRY	DRY	DRY	DRY	DRY	DRY	DRY
23	KONKAN & GOA	DRY	DRY	DRY	DRY	DRY	DRY	DRY
24	MADHYA MAHARASHTRA	DRY	DRY	DRY	DRY	DRY	DRY	DRY
25	MARATHAWADA	DRY	DRY	DRY	DRY	DRY	DRY	DRY
26	VIDARBHA	DRY	DRY	DRY	DRY	DRY	DRY	ISOL
27	CHHATTISGARH	DRY	DRY	DRY	DRY	DRY	DRY	ISOL
28	COASTAL ANDHRA PRADESH & YANAM	DRY	DRY	DRY	DRY	DRY	DRY	DRY
29	TELANGANA	DRY	DRY	DRY	DRY	DRY	DRY	DRY
30	RAYALASEEMA	ISOL	ISOL	DRY	DRY	DRY	DRY	DRY
31	TAMILNADU PUDUCHERRY & KARAIKAL	FWS	ISOL	ISOL	DRY	DRY	DRY	ISOL
32	COASTAL KARNATAKA	DRY	DRY	DRY	DRY	DRY	DRY	DRY
33	NORTH INTERIOR KARNATAKA	DRY	DRY	DRY	DRY	DRY	DRY	DRY
34	SOUTH INTERIOR KARNATAKA	ISOL	ISOL	ISOL	DRY	DRY	DRY	DRY
35	KERALA & MAHE	FWS	SCT	ISOL	ISOL	ISOL	SCT	SCT
36	LAKSHADWEEP	WS	FWS	SCT	DRY	DRY	SCT	SCT

- As the lead period increases forecast accuracy decreases.





- Action may be taken based on ORANGE AND RED COLOUR warnings.
- Vulnerable regions likely urban and hilly areas action may be initiated for heavy rainfall warning.
- As the lead period increases forecast accuracy decreases.

Detailed district wise Multi Hazard weather warning for next five days available at <https://mausam.imd.gov.in/responsive/districtWiseWarningGIS.php>

**Weather forecast over Delhi/NCR during 11<sup>th</sup> Mar. to 14<sup>th</sup> Mar. 2025****Past Weather:**

There has been a slight rise in minimum temperature and slight fall in maximum temperature over Delhi/NCR during the past 24 hours. The maximum and minimum temperatures over Delhi are in the range of 31 to 32°C and 15 to 17°C respectively. The minimum and maximum temperatures were above normal upto 3°C at most places. Mainly clear sky conditions with predominant surface wind from the southeast direction with wind speeds less than 14 to 18 kmph prevailed during the past 24 hours. Mainly clear sky conditions with wind speed less than 06 kmph from the east direction prevailed over the region in the forenoon today.

**Weather Forecast:**

**11.03.2025:** Partly cloudy sky. Strong surface winds (speed 20-30 kmph). The maximum temperature over Delhi is likely to be in the range of 32 to 34°C. The predominant surface wind will likely be from the northwest direction with a wind speed of less than 18 kmph till evening. It would decrease thereafter becoming less than 14 kmph from the northwest direction during the night.

**12.03.2025:** Partly cloudy sky. Mist likely in the morning. Strong surface winds (speed 20-30 kmph). The maximum and minimum temperatures over Delhi are likely to be in the range of 32 to 34°C and 16 to 18°C respectively. The predominant surface wind will likely be from the northwest direction with a wind speed of 12-14 kmph during morning hours. The wind speed will gradually increase thereafter becoming, 16-18 kmph from the northwest direction during the afternoon. It will decrease becoming less than 10 kmph from the northwest direction during evening and night.

**13.03.2025:** Generally cloudy sky. Mist likely in the morning. Possibility of very light rain/drizzle evening/night. The maximum and minimum temperatures over Delhi are likely to be in the range of 33 to 35°C and 17 to 19°C respectively. The predominant surface wind will likely be from the northwest direction with a wind speed of 04-06 kmph during morning hours. The wind speed will gradually increase becoming 10-12 kmph from the southeast direction in the afternoon. It will decrease becoming less than 10 kmph from the southeast direction during evening and night.

**14.03.2025:** Generally cloudy sky. Mist likely in the morning. Possibility of very light rain/drizzle. The maximum and minimum temperatures over Delhi are likely to be in the range of 33 to 35°C and 16 to 18°C, respectively. The predominant surface wind will likely be from the east direction with a wind speed of 08-10 kmph during morning hours. The wind speed will gradually increase becoming 10-12 kmph from the south direction in the afternoon. It will increase becoming less than 10 kmph from the northeast direction during evening and night.

**Impact expected and action suggested due to thunderstorm accompanied with lightning/gusty winds over Kerala & Mahe on 11<sup>th</sup>; Sub-Himalayan West Bengal & Sikkim on 11<sup>th</sup> & 12<sup>th</sup>; Assam & Meghalaya during 11<sup>th</sup>-15<sup>th</sup>; Nagaland, Manipur, Mizoram & Tripura during 11<sup>th</sup>-16<sup>th</sup> March, 2025.**

**Impact expected:**

- ❖ Strong wind may damage plantation, horticulture and standing crops.
- ❖ Partial damage to vulnerable structures due to strong winds.
- ❖ Minor damage to kutcha houses/walls and huts.
- ❖ Loose objects may fly.

**Action suggested:**

- ❖ Stay indoors, close windows & doors and avoid travel if possible.
- ❖ Take safe shelters; do not take shelter under trees.
- ❖ Do not lie on concrete floors and do not lean against concrete walls.
- ❖ Unplug electrical/ electronic appliances.
- ❖ Immediately get out of water bodies.
- ❖ Keep away from all the objects that conduct electricity.

**Impact & Action Suggested due to very heavy rainfall/ snowfall over Arunachal Pradesh on 13<sup>th</sup>; heavy rainfall/ snowfall over Jammu-Kashmir-Ladakh-Gilgit-Baltistan-Muzaffarabad & Himachal Pradesh on 14<sup>th</sup>; Arunachal Pradesh during 11<sup>th</sup>-17<sup>th</sup>; Assam on 13<sup>th</sup>; Heavy rainfall over Tamilnadu Puducherry & Karaikal on 12<sup>th</sup>; Kerala & Mahe on 11<sup>th</sup> & 12<sup>th</sup> March and very heavy rainfall over Tamil Nadu on 11<sup>th</sup> March.**

#### **A. Impact Expected**

- ❖ Localized Flooding of roads, water logging in low lying areas and closure of underpasses mainly in urban areas of the above region.
- ❖ Occasional reduction in visibility due to heavy rainfall.
- ❖ Disruption of traffic in major cities due to water logging in roads leading to increased travel time.
- ❖ Minor damage to kutcha roads.
- ❖ Possibilities of damage to vulnerable structure.
- ❖ Localized Landslides/Mudslides
- ❖ Damage to horticulture and standing crops in some areas due to inundation.
- ❖ It may lead to riverine flooding in some river catchments (for riverine flooding please visit Web page of CWC).

#### **B. Action Suggested**

- ❖ Check for traffic congestion on your route before leaving for your destination.
- ❖ Follow any traffic advisories that are issued in this regard.
- ❖ Avoid going to areas that face the water logging problems often.
- ❖ Avoid staying in vulnerable structure.

#### **Impact expected and action suggested due to Heat Wave conditions**

##### **Red alert Areas (Gujarat State)**

- ❖ Very high likelihood of developing heat illness and heat stroke in all ages.
- ❖ Extreme care needed for vulnerable people.

##### **Orange alert Areas (southwest Rajasthan)**

- ❖ High temperature & increased likelihood of heat illness symptoms in people who are either exposed to sun for a prolonged period or doing heavy work.
- ❖ High health concern for vulnerable people e.g. infants, elderly, people with chronic diseases.
- ❖ Avoid heat exposure– keep cool. Avoid dehydration.
- ❖ Drink sufficient water- even if not thirsty.
- ❖ Use ORS, homemade drinks like lassi, torani (rice water), lemon water, buttermilk, etc. to keep yourself hydrated.

##### **Yellow alert Areas (Vidarbha, Odisha and Konkan)**

- ❖ Moderate temperature & heat is tolerable for general public but moderate health concern likely for vulnerable people e.g. infants, elderly, people with chronic diseases.
- ❖ Avoid heat exposure.
- ❖ Wear lightweight, light colour, loose, cotton clothes.
- ❖ Cover your head, use a cloth, hat or umbrella.

#### **Agromet advisories for likely impact of Heavy Rainfall / Heat Wave**

- Make provision for draining out excess water from standing crop fields and vegetables in **Arunachal Pradesh, Assam, Tamil Nadu and Kerala.**
- In **Gujarat, Konkan, Vidarbha and West Rajasthan**, apply light and frequent irrigation to the standing crops, vegetables and orchards in the evening to protect them from heat wave.
- Keep the harvested produce in safer places or cover the produce with tarpaulin sheets in the fields.
- Provide mechanical support to horticultural crops and staking to vegetables to avoid lodging.

#### **Livestock and Fishery**

- Keep the animals inside the shed during heavy rainfall and provide them balanced feed.
- Store feed and fodder in a safe place to prevent spoilage.
- Construct an outlet with proper netting around the ponds to drain out excess water, thereby preventing fish from escaping in case of overflow.
- To reduce the effect of heat wave/high temperature, cover the roof of poultry sheds with grass. Also provide clean, hygienic and plenty of drinking water to animals.

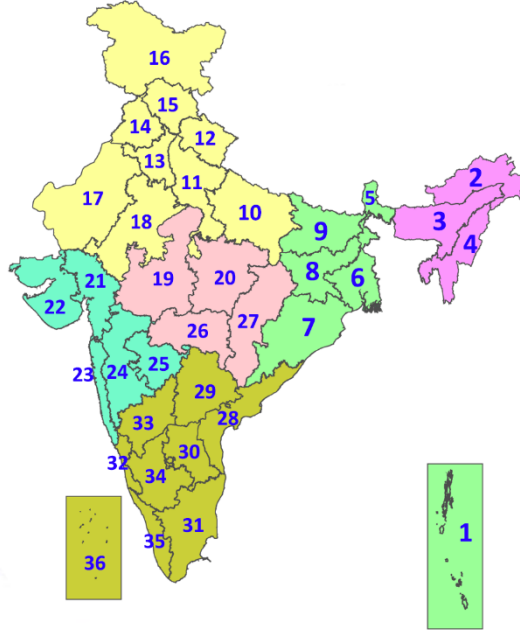


## Legends & abbreviations:

- ❖ **Heavy Rain:**64.5-115.5mm; **Very Heavy Rain:**115.6-204.4mm; **Extremely Heavy Rain:** >204.4mm.
- ❖ **Obsy:** Observatory; **AWS:** Automatic Weather Station; **ARG:** Automatic Rain Gauge; **dist:** District; **NH:** National Highway; **KVK:** Krishi Vigyan Kendra; **DVC:** Damodar Valley Corporation; **PTO:** Part Time Office, **Aero:** Aerodrome, **IAF:** Indian Air Force.
- ❖ **Region wise classification of meteorological Sub-Divisions:**
  - **Northwest India:** Western Himalayan Region (Jammu-Kashmir-Ladakh-Gilgit-Baltistan-Muzaffarabad, Himachal Pradesh and Uttarakhand); Punjab, Haryana-Chandigarh-Delhi; West Uttar Pradesh, East Uttar Pradesh, West Rajasthan and East Rajasthan.
  - **Central India:** West Madhya Pradesh, East Madhya Pradesh, Vidarbha and Chhattisgarh.
  - **East India:** Bihar, Jharkhand, Sub-Himalayan West Bengal & Sikkim; Gangetic West Bengal, Odisha and Andaman & Nicobar Islands.
  - **Northeast India:** Arunachal Pradesh, Assam & Meghalaya and Nagaland, Manipur, Mizoram & Tripura.
  - **West India:** Gujarat Region, Saurashtra & Kutch, Konkan & Goa, Madhya Maharashtra and Marathawada.
  - **South India:** Coastal Andhra Pradesh & Yanam, Telangana, Rayalaseema, Coastal Karnataka, North Interior Karnataka, South Interior Karnataka, Kerala & Mahe, Tamil Nadu, Puducherry & Karaikal and Lakshadweep.

## LEGENDS

1. अंडमान और निकोबार द्वीपसमूह
2. अरुणाचल प्रदेश
3. असम और मेघालय
4. नागालैंड, मणिपुर, मिजोरम और त्रिपुरा
5. उप-हिमालयी पश्चिम बंगाल और सिक्किम
6. गंगीय पश्चिम बंगाल
7. ओडिशा
8. झारखंड
9. बिहार
10. पूर्वी उत्तर प्रदेश
11. पश्चिम उत्तर प्रदेश
12. उत्तराखंड
13. हरियाणा, चंडीगढ़ और दिल्ली
14. पंजाब
15. हिमाचल प्रदेश
16. जम्मू और कश्मीर और लद्दाख
17. पश्चिम राजस्थान
18. पूर्वी राजस्थान
19. पश्चिम मध्य प्रदेश
20. पूर्वी मध्य प्रदेश
21. गुजरात
22. सौराष्ट्र
23. कोंकण और गोवा
24. मध्य महाराष्ट्र
25. मराठवाड़ा
26. विदर्भ
27. छत्तीसगढ़
28. तटीय आंध्र प्रदेश और यनम
29. तेलंगाना
30. रायलसीमा
31. तमिलनाडु, पुडुचेरी और कराईकल
32. तटीय कर्नाटक
33. आंतरिक उत्तरी कर्नाटक
34. आंतरिक दक्षिणी कर्नाटक
35. केरल और माहे
36. लक्षद्वीप



1. Andaman & Nicobar Islands
2. Arunachal Pradesh
3. Assam & Meghalaya
4. Nagaland, Manipur, Mizoram & Tripura
5. Sub-Himalayan West Bengal & Sikkim
6. Gangetic West Bengal
7. Odisha
8. Jharkhand
9. Bihar
10. East Uttar Pradesh
11. West Uttar Pradesh
12. Uttarakhand
13. Haryana, Chandigarh & Delhi
14. Punjab
15. Himachal Pradesh
16. Jammu & Kashmir and Ladakh
17. West Rajasthan
18. East Rajasthan
19. West Madhya Pradesh
20. East Madhya Pradesh
21. Gujarat
22. Saurashtra
23. Konkan & Goa
24. Madhya Maharashtra
25. Marathwada
26. Vidarbha
27. Chhattisgarh
28. Coastal Andhra Pradesh & Yanam
29. Telangana
30. Rayalaseema
31. Tamilnadu, Puducherry & Karaikal
32. Coastal Karnataka
33. North Interior Karnataka
34. South Interior Karnataka
35. Kerala & Mahe
36. Lakshadweep

## SPATIAL DISTRIBUTION (% of Stations reporting)

% Stations	Category	% Stations	Category
76-100	Widespread (WS/Most Places)	26-50	Scattered (SCT/A Few Places)
51-75	Fairly Widespread (FWS/Many Places)	1-25	Isolated (ISOL)



Fog



Heavy Snow



Cold Wave



Heavy Rain



Dust Storm



Cold Day



Very Heavy Rain



Heat Wave



Ground Frost



Extremely Heavy Rain



Warm Night



Thunder & Lightning



Hot Day



Hailstorm



Hot & Humid



Dust Raising Winds



Strong Surface Winds

### COLOUR CODED WARNING

No Warning (No Action)

Watch (Be Aware)

Alert (Be Prepared To Take Action)

Warning (Take Action)

### Probabilistic Forecast

Terms	Probability of Occurrence (%)
Unlikely	< 25
Likely	25 - 50
Very Likely	50 - 75
Most Likely	> 75

\* Red colour warning does not mean "Red Alert", Red colour warning means "Take Action".  
Forecast and Warning for any day is valid from 0830 hours IST of day till 0830 hours IST of next day.  
For more details, kindly visit <https://mausam.imd.gov.in> or contact: 011-2434-4599  
(Service to the Nation since 1875)

## DEFINITION/CRITERIA

<b>Rain/ Snow *</b>	<b>Heavy:</b> 64.5 to 115.5 mm/cm * <b>Very Heavy:</b> 115.6 to 204.4 mm/cm * <b>Extremely Heavy:</b> > 204.4 mm/cm *
<b>Heat Wave</b>	<b>When maximum temperature of a station reaches <math>\geq 40^{\circ}\text{C}</math> for plains and <math>\geq 30^{\circ}\text{C}</math> for hilly regions</b> <b>(a) Based on Departure from normal</b> <b>Heat Wave:</b> Maximum Temperature Departure from normal $4.5^{\circ}\text{C}$ to $6.4^{\circ}\text{C}$ . <b>Severe Heat Wave:</b> Maximum Temperature Departure from normal $\geq 6.5^{\circ}\text{C}$ <b>(b). Based on Actual maximum temperature</b> <b>Heat Wave:</b> When actual maximum temperature $\geq 45^{\circ}\text{C}$ . <b>Severe Heat Wave:</b> When actual maximum temperature $\geq 47^{\circ}\text{C}$ <b>(c). Criteria for heat wave for coastal stations</b> When maximum temperature departure is $> 4.5^{\circ}\text{C}$ from normal. Heat Wave may be described provided maximum temperature $\geq 37^{\circ}\text{C}$
<b>Warm Night</b>	<b>When maximum temperature remains <math>40^{\circ}\text{C}</math></b> <b>Warm Night:</b> When minimum temperature departure $4.5^{\circ}\text{C}$ to $6.4^{\circ}\text{C}$ . <b>Severe Warm Night:</b> When minimum temperature departure $> 6.4^{\circ}\text{C}$ .
<b>Cold Wave</b>	<b>When minimum temperature of a station <math>\leq 10^{\circ}\text{C}</math> for plains and <math>\leq 0^{\circ}\text{C}</math> for hilly regions.</b> <b>(a). Based on departure</b> <b>Cold Wave:</b> Minimum Temperature Departure from normal $-4.5^{\circ}\text{C}$ to $-6.4^{\circ}\text{C}$ . <b>Severe Cold Wave:</b> Minimum Temperature Departure from normal $\leq -6.5^{\circ}\text{C}$ <b>(b) Based on actual Minimum Temperature (for Plains only)</b> <b>Cold Wave :</b> When Minimum Temperature is $\leq 4.0^{\circ}\text{C}$ <b>Severe Cold Wave:</b> When Minimum Temperature is $\leq 2.0^{\circ}\text{C}$ <b>(c) For Coastal Stations</b> When Minimum Temperature departure is $\leq -4.5^{\circ}\text{C}$ & actual Minimum Temperature is $\leq 15^{\circ}\text{C}$
<b>Cold Day</b>	<b>When minimum temperature of a station <math>\leq 10^{\circ}\text{C}</math> for plains and <math>\leq 0^{\circ}\text{C}</math> for hilly regions</b> <b>Based on departure</b> <b>Cold Day:</b> Maximum Temperature Departure from normal $-4.5^{\circ}\text{C}$ to $-6.4^{\circ}\text{C}$ . <b>Severe Cold Day:</b> Maximum Temperature Departure from normal $\leq -6.5^{\circ}\text{C}$
<b>Fog</b>	<b>Phenomenon of small droplets suspended in air and the horizontal visibility <math>&lt; 1\text{km}</math></b> <b>Moderate Fog:</b> When the visibility between 500-200 metres <b>Dense Fog:</b> when the visibility between 50- 200 metres <b>Very Dense Fog:</b> when the visibility $< 50$ metres
<b>Thunderstorm</b>	Sudden electrical discharges manifested by a flash of light (Lightning) and a sharp rumbling sound (thunder)
<b>Dust/Sand Storm</b>	An ensemble of particles of dust or sand energetically lifted to great heights by a strong and turbulent wind.
<b>Frost</b>	<b>Ice deposits on ground</b> Air temperature $\leq 4^{\circ}\text{C}$ ( over Plains)
<b>Squall</b>	<b>A strong wind that rises suddenly, lasts for atleast 1 minute.</b> <b>Moderate:</b> Wind speed 52-61 kmph <b>Severe:</b> Wind speed 62-87 kmph <b>Very Severe:</b> Wind speed $> 87$ kmph
<b>Sea State</b>	<b>Effect of various waves in the sea over specific area</b> <b>Rough to very rough:</b> Wind speed 41-62 kmph (22-33 knots) & Wave height 2.5-6 metre <b>High to very high:</b> Wind speed 63-117 kmph ( 34-63 knots) & Wave height 6-14 metre <b>Phenomenal:</b> Wind speed $> 117$ kmph ( $> 63$ knots) & Wave height $> 14$ metre
<b>Cyclone</b>	<b>Cyclonic Storm:</b> Wind speed 62-87 kmph (34-47 knots) <b>Severe Cyclonic Storm:</b> Wind speed 88-117 kmph (48-63 knots) <b>Very Severe Cyclonic Storm:</b> Wind speed 118-165 kmph (64 - 89 knots) <b>Extremely Severe Cyclonic Storm:</b> Wind speed 166-220 kmph (90 -119 knots) <b>Super Cyclone Strom:</b> Wind speed $> 220$ kmph ( $> 119$ knots)

\* Red colour warning does not mean "Red Alert", Red colour warning means "Take Action".  
 Forecast and Warning for any day is valid from 0830 hours IST of day till 0830 hours IST of next day.  
 For more details, kindly visit <https://mausam.imd.gov.in> or contact: 011-2434-4599  
 (Service to the Nation since 1875)

**Hot and Humid:** When maximum temperatures remain  $3^{\circ}\text{C}$  above normal along with the above normal relative humidity.