

Government of India
Ministry of Earth Sciences
India Meteorological Department



Press Release

Date: 13th March, 2025

Time of Issue: 1315 hours IST

Subject: i) Heat wave conditions likely at isolated places over Gujarat State on 13th; Vidarbha, Chhattisgarh on 13th & 14th; Odisha during 13th-17th; Jharkhand during 14th-17th and Gangetic West Bengal on 15-17th March, 2025.

ii) Fairly widespread to widespread rainfall/snowfall with isolated heavy spell likely over Western Himalayan region and Arunachal Pradesh during next 4-5 days and isolated to scattered rainfall over plains of Northwest India till 16th March, 2025.

i. Realised weather during past 24 hours till 0830 hours IST of today, the 13th March 2025:

- ❖ **Light Rainfall/Snowfall** occurred at most places over Jammu-Kashmir-Ladakh-Gilgit-Baltistan-Muzaffarabad, Kerala, Lakshadweep; at many places over Arunachal Pradesh, Assam, Tamilnadu Puducherry & Karaikal; at isolated places over Himachal Pradesh, Uttarakhand, Punjab, Haryana, West Rajasthan, Andaman & Nicobar Islands, Sub-Himalayan West Bengal & Sikkim, Nagaland, Manipur, Mizoram & Tripura, Coastal & south interior Karnataka
- ❖ **Thunderstorm with lightning** reported at isolated places over Jammu, Kashmir, Punjab, Assam, Sub-Himalayan West Bengal, Nagaland, Manipur, Mizoram & Tripura.
- ❖ **Heavy rainfall** has been recorded at isolated places over South Tamilnadu, Puducherry & Karaikal, Kerala & Mahe.
- ❖ **Heat wave to Severe heat wave conditions** prevailed at a few places over Saurashtra & Kutch and **Heat wave conditions** at isolated places over Southwest Rajasthan, Konkan and Gujarat Region.
- ❖ **Hailstorms reported** at isolated locations over coastal Karnataka.
- ❖ **For more details of realised weather, kindly refer [Annexure I](#)**

Temperature:

- ❖ For temperature observations during past 24 hours till 0830 hours IST of today are provided in [Annexure II](#)

ii. Forecast for Holi: Generally cloudy sky with possibility of isolated light rain over plains of Northwest India on 14th March. Fairly widespread to widespread light to moderate rainfall/snowfall with isolated heavy falls over Jammu-Kashmir-Ladakh and Arunachal Pradesh; scattered to fairly widespread to widespread light/moderate rainfall/snowfall over Himachal Pradesh and Uttarakhand; and scattered to fairly widespread to widespread light/moderate rainfall over remaining parts of Northeast India and over Sub-Himalayan West Bengal & Sikkim on 14th March and dry weather mainly over remaining parts of the country.

iii. Weather Systems, Forecast and Warnings ([Annexure III & IV](#)):

- ❖ A **Western Disturbance** seen as a cyclonic circulation over Afghanistan in lower & middle tropospheric levels. A cyclonic circulation lies over southwest Rajasthan at lower tropospheric levels. Under the influence of these systems;
 - ✓ **Fairly widespread to widespread light/moderate rainfall/snowfall accompanied with thunderstorm & lightning** likely over Jammu-Kashmir-Ladakh-Gilgit-Baltistan-Muzaffarabad and Himachal Pradesh during 13th-16th; **Scattered to fairly widespread light/moderate rainfall/snowfall accompanied with thunderstorm & lightning** likely over Uttarakhand during 13th-16th March and decrease in intensity thereafter.
 - ✓ **Isolated light/moderate rainfall accompanied with thunderstorm & lightning** likely over Punjab, Haryana, West Uttar Pradesh and Rajasthan during 13th-16th; East Uttar Pradesh on 15th & 16th March.

- ✓ Isolated **heavy rainfall/snowfall** very likely over Jammu-Kashmir-Ladakh-Gilgit-Baltistan-Muzaffarabad on 14th & 15th; Himachal Pradesh 15th & 16th and Uttarakhand on 16th March
- ❖ A **Cyclonic Circulation** lies over East Bangladesh and a trough in westerly runs roughly along Long. 88°E to the north of Lat. 21°N in lower tropospheric levels. Under the influence of these systems;
 - ✓ **Fairly widespread to widespread light/moderate rainfall/snowfall** accompanied with **thunderstorm & lightning** likely over Arunachal Pradesh and **Scattered to fairly widespread** light/moderate rainfall/snowfall accompanied with **thunderstorm, lightning & gusty winds (speed 40-50 kmph)** likely over Assam & Meghalaya and Nagaland, Manipur, Mizoram & Tripura during 13th-17th March.
 - ✓ Isolated **heavy rainfall/snowfall** very likely over Arunachal Pradesh during 13th-14th, 16th -17th and over northeast & central Assam on 13th March.
 - ✓ Isolated hailstorms also likely over northeast & central Assam and Nagaland, Manipur, Mizoram & Tripura on 14th March.

Temperature Forecast:

Forecast of temperature:

Maximum temperature:

- ❖ No significant change in maximum temperatures likely over plains of Northwest India during next 24 hours and fall by 2-3°C thereafter.
- ❖ No significant change in maximum temperatures likely over central India during next 48 hours and fall by 2-3°C thereafter.
- ❖ Gradual fall in maximum temperatures by 2-4°C likely over many parts of West India during next 4-5 days.
- ❖ Gradual rise in maximum temperatures by about 2-3°C likely over East India during next 3 days and no significant change thereafter.
- ❖ Gradual rise in maximum temperatures by about 2-4°C likely over many parts of south peninsular India during next 4-5 days.

Heat wave, Warm Night and Hot & Humid weather warning:

- ❖ **Heat wave conditions** likely at isolated places over Gujarat State and southwest Rajasthan on 13th; Vidarbha, Chhattisgarh on 13th & 14th; Odisha during 13th-17th; Jharkhand during 14th-17th and Gangetic West Bengal on 15-17th March, 2025.
- ❖ **Warm night conditions** very likely to prevail in isolated pockets over Odisha on 15th & 16th March.

iv. Weather conditions and forecast over Delhi/NCR during 13th March to 16th March, 2025 (Annexure V)

For more details, kindly refer National Weather Bulletin:

https://mausam.imd.gov.in/responsive/all_india_forecast_bulletin.php

For District wise warnings refer: <https://mausam.imd.gov.in/responsive/districtWiseWarningGIS.php>

Significant weather reported during past 24 hours till 0830 hours IST of today:**Rainfall recorded (in cm):**

- ❖ **Tamilnadu Puducherry & Karaikal:** Kallakurichi (dist Kallakurichi) 9, DSCL Thiyagadurgam (dist Kallakurichi) 7;
- ❖ **Kerala & Mahe:** Ambalavayal (Wayanad district) 7, Quilandi (Kozhikode district) & Chimoni (Thrissur district) 6 each, Kannur, Thalassery (Kannur district) & Karapuzha (Wayanad district) 4 each, Vythiri (Wayanad district), Mahe (Puducherry UT), Kovilkadavu (Idukki district), Cheruvanchery & Kannur (both in Kannur district) & Neryamangalam (Ernakulam district) 3 each;
- ❖ **Assam & Meghalaya:** Bokajan AEGCL (dist Bokajan) 4;

Thunderstorm reported:

- ❖ **Assam & Meghalaya:** Guwahati, Shillong, Barapani;
- ❖ **Nagaland, Manipur, Mizoram & Tripura:** Dimapur, Imphal;
- ❖ **Sub-Himalayan West Bengal & Sikkim:** Cooch Behar;
- ❖ **Punjab:** Patiala.

Gusty winds reported (in kmph):

- ❖ **Kerala & Mahe:** Wayanad 45, Palakkad 43, Kasargod 41 Kannur 38.

ANNEXURE II

- ❖ **Maximum Temperature Departures (as on 12-03-2025):** Maximum temperatures were **markedly above normal (5.1°C or more)** at many places over Saurashtra & Kutch; at a few places over Madhya Pradesh and Konkan & Goa; at isolated places over Gujarat Region and Uttarakhand; **appreciably above normal (3.1°C to 5.0°C)** at many places Delhi and Vidarbha; at a few places over East Uttar Pradesh, Rayalaseema, Odisha and Gangetic West Bengal; at isolated places over West Uttar Pradesh, Punjab, Chhattisgarh, Madhya Maharashtra and Marathwada; **above normal (1.6°C to 3.0°C)** at a few places over Bihar, North Interior Karnataka, Coastal Andhra Pradesh & Yanam and Telangana. These were **markedly below normal (5.1°C or less)** at isolated places over Assam & Meghalaya and Tamil Nadu, Puducherry & Karaikal; **appreciably below normal (-3.1°C to -5.0°C)** at isolated places over Kerala & Mahe; **below normal (-3.0°C to -1.6°C)** at isolated places over Jammu-Kashmir-Ladakh-Gilgit-Baltistan-Muzaffarabad and near normal over rest parts of the country. Yesterday, the highest maximum temperature of **42.1°C** was reported at **Rajkot (Saurashtra & Kutch)** over the country.
- ❖ Yesterday, Maximum Temperatures are in the range of **40-42°C** prevailed over many places in Gujarat State and at isolated places over Rajasthan, Vidarbha; **38-40°C** over isolated places over Odisha and Konkan & Goa; **36-38°C** over many places over Madhya Pradesh, Madhya Maharashtra, southern Peninsular India; at isolated places over Jharkhand, Gangetic West Bengal and Chhattisgarh. These are above normal by 4-6°C at many places over Gujarat state, isolated places over Vidarbha.
- ❖ Yesterday, the Maximum temperatures have shown falling tendency in 24 hours by 1-3° C over many parts of Haryana, Delhi & adjoining West Uttar Pradesh, Rajasthan, Gujarat, north Konkan, south interior Karnataka, Puducherry, Sikkim, and northeastern states; rising tendency in 24 hours by 1-2° C over many parts of Srinagar, Ladakh, Himachal Pradesh, Uttarakhand, Remaining parts of Uttar Pradesh, interior Maharashtra, Telangana, Andhra Pradesh, north interior Karnataka, Andhra Pradesh, Madhya Pradesh, Chhattisgarh, Odisha, Jharkhand, Bihar, West Bengal and Andaman & Nicobar Islands.

Fig. 1: Maximum Temperatures

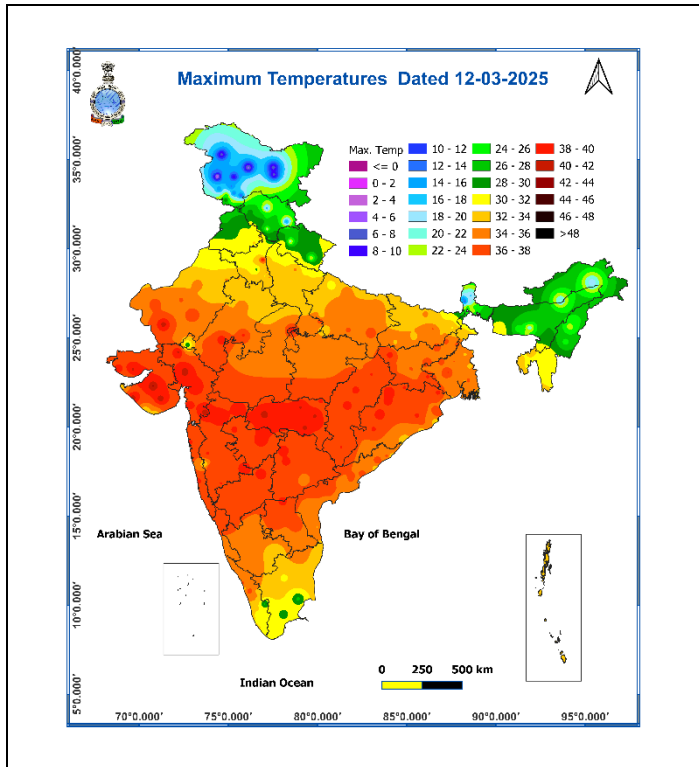
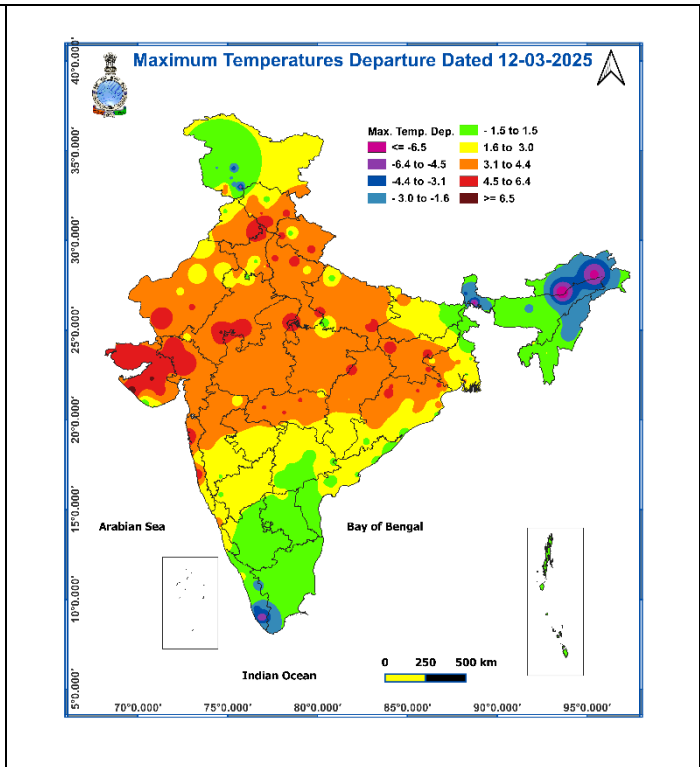
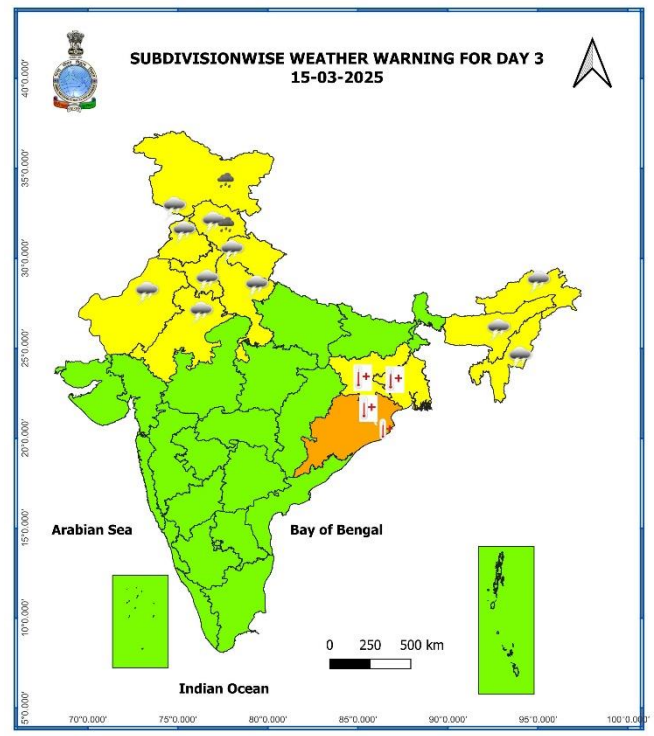
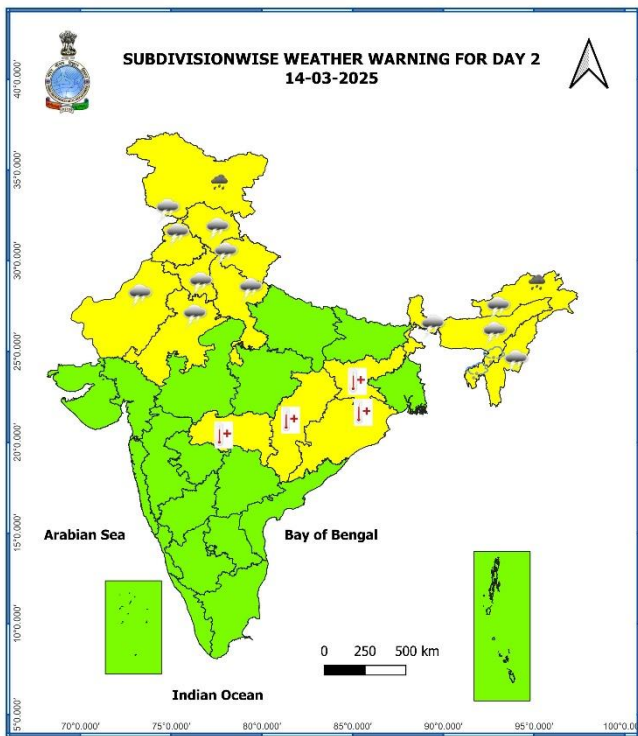
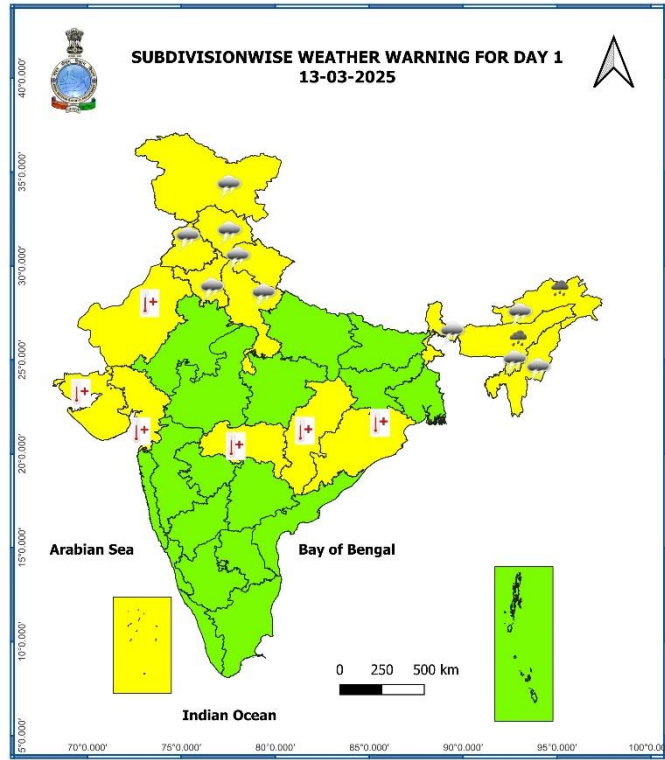


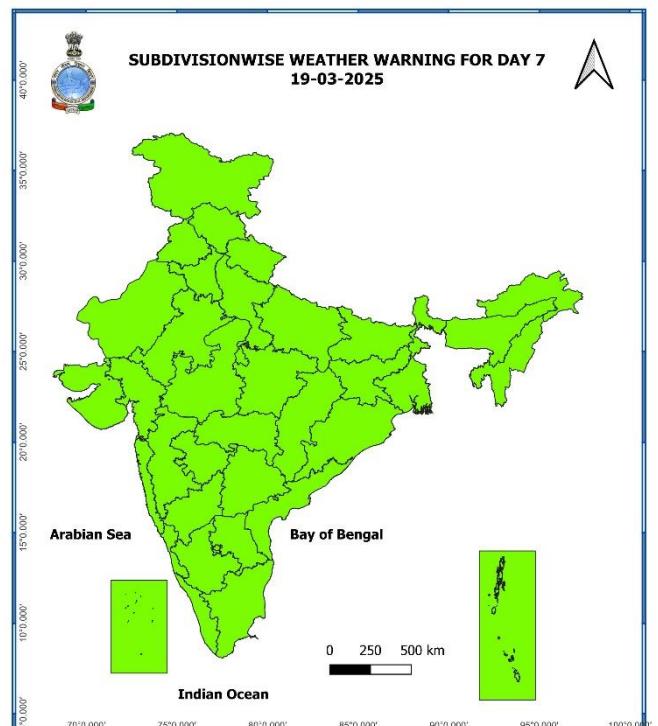
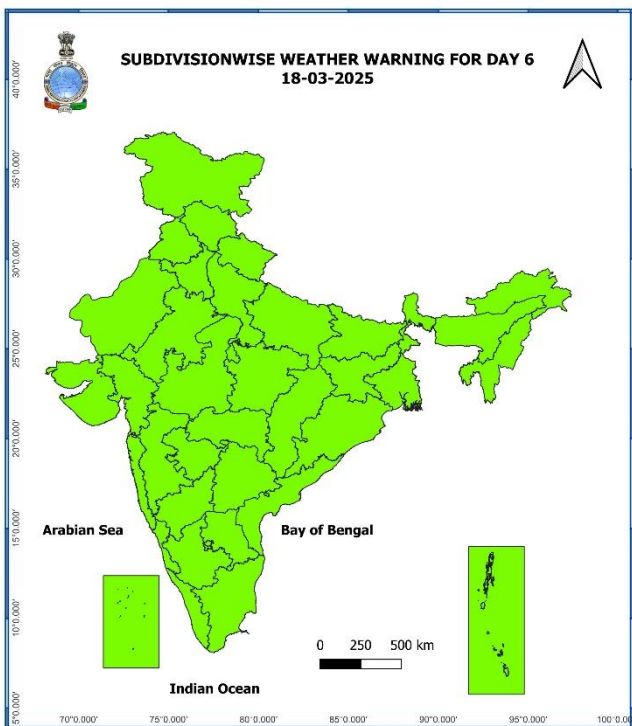
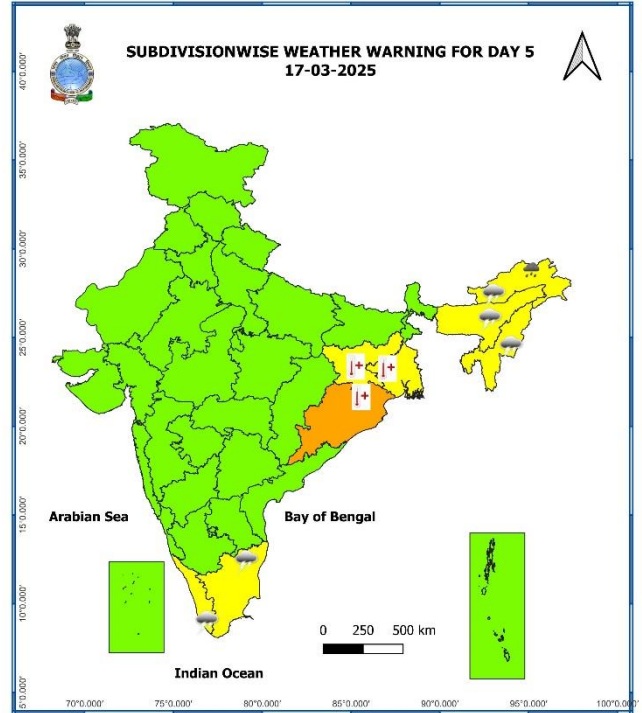
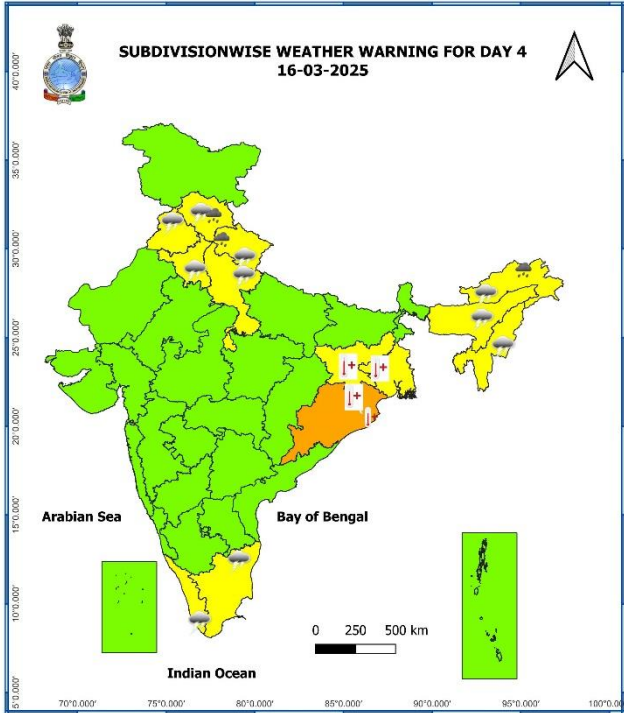
Fig. 2: Departure of Maximum Temperatures



7 Days Rainfall Forecast								
S. No.	Subdivision	13-Mar	14-Mar	15-Mar	16-Mar	17-Mar	18-Mar	19-Mar
		Day 1	Day 2	Day 3	Day 4	Day 5	Day 6	Day 7
1	ANDAMAN & NICOBAR ISLANDS	SCT	SCT	SCT	ISOL	DRY	ISOL	ISOL
2	ARUNACHAL PRADESH	WS	FWS	SCT	FWS	WS	WS	WS
3	ASSAM & MEGHALAYA	FWS	FWS	SCT	SCT	ISOL	SCT	SCT
4	NAGALAND, MANIPUR, MIZORAM & TRIPURA	SCT	SCT	SCT	SCT	SCT	SCT	SCT
5	SUB-HIMALAYAN WEST BENGAL & SIKKIM	SCT	ISOL	ISOL	ISOL	DRY	DRY	DRY
6	GANGETIC WEST BENGAL	DRY	DRY	DRY	DRY	DRY	DRY	DRY
7	ODISHA	DRY	DRY	DRY	DRY	DRY	DRY	DRY
8	JHARKHAND	DRY	DRY	DRY	DRY	DRY	DRY	DRY
9	BIHAR	DRY	DRY	DRY	ISOL	DRY	DRY	DRY
10	EAST UTTAR PRADESH	DRY	DRY	ISOL	ISOL	DRY	DRY	DRY
11	WEST UTTAR PRADESH	ISOL	ISOL	ISOL	ISOL	DRY	DRY	DRY
12	UTTARAKHAND	SCT	SCT	FWS	FWS	SCT	ISOL	ISOL
13	HARYANA CHANDIGARH & DELHI	ISOL	ISOL	SCT	SCT	DRY	DRY	DRY
14	PUNJAB	ISOL	ISOL	SCT	SCT	DRY	DRY	DRY
15	HIMACHAL PRADESH	FWS	WS	WS	FWS	ISOL	DRY	DRY
16	JAMMU & KASHMIR AND LADAKH	WS	WS	WS	FWS	ISOL	DRY	ISOL
17	WEST RAJASTHAN	ISOL	ISOL	ISOL	DRY	DRY	DRY	DRY
18	EAST RAJASTHAN	ISOL	ISOL	ISOL	ISOL	DRY	DRY	DRY
19	WEST MADHYA PRADESH	DRY	DRY	DRY	DRY	DRY	DRY	DRY
20	EAST MADHYA PRADESH	DRY	DRY	DRY	ISOL	DRY	DRY	DRY
21	GUJARAT REGION	DRY	DRY	DRY	DRY	DRY	DRY	DRY
22	SAURASHTRA & KUTCH	DRY	DRY	DRY	DRY	DRY	DRY	DRY
23	KONKAN & GOA	DRY	DRY	DRY	DRY	DRY	DRY	DRY
24	MADHYA MAHARASHTRA	DRY	DRY	DRY	DRY	DRY	DRY	DRY
25	MARATHAWADA	DRY	DRY	DRY	DRY	DRY	DRY	DRY
26	VIDARBHA	DRY	DRY	DRY	ISOL	DRY	DRY	DRY
27	CHHATTISGARH	DRY	DRY	DRY	ISOL	DRY	DRY	DRY
28	COASTAL ANDHRA PRADESH & YANAM	DRY	DRY	DRY	DRY	DRY	DRY	DRY
29	TELANGANA	DRY	DRY	DRY	DRY	DRY	DRY	DRY
30	RAYALASEEMA	DRY	DRY	DRY	DRY	DRY	DRY	DRY
31	TAMILNADU PUDUCHERRY & KARAIKAL	ISOL	ISOL	DRY	DRY	ISOL	ISOL	ISOL
32	COASTAL KARNATAKA	ISOL	DRY	DRY	ISOL	DRY	DRY	DRY
33	NORTH INTERIOR KARNATAKA	DRY	DRY	DRY	DRY	DRY	DRY	DRY
34	SOUTH INTERIOR KARNATAKA	ISOL	DRY	DRY	ISOL	DRY	DRY	DRY
35	KERALA & MAHE	ISOL	ISOL	ISOL	SCT	SCT	SCT	SCT
36	LAKSHADWEEP	SCT	DRY	DRY	DRY	SCT	SCT	SCT

- As the lead period increases forecast accuracy decreases.





- Action may be taken based on ORANGE AND RED COLOUR warnings.
- Vulnerable regions likely urban and hilly areas action may be initiated for heavy rainfall warning.
- As the lead period increases forecast accuracy decreases.

Detailed district wise Multi Hazard weather warning for next five days available at <https://mausam.imd.gov.in/responsive/districtWiseWarningGIS.php>

Weather forecast over Delhi/NCR during 13th Mar. to 16th Mar. 2025

There has been a rise in minimum temperature upto 01°C and fall in maximum temperatures upto 01°C over Delhi/NCR during the past 24 hours. The maximum and minimum temperatures over Delhi are in the range of 32 to 34°C and 17 to 19°C respectively. The minimum and maximum temperatures were above normal upto 04°C at most places. Mainly clear sky conditions with predominant surface wind from the northwest direction with wind speeds less than 12 to 14 kmph prevailed during the past 24 hours. Partly cloudy sky conditions with wind speed less than 06 kmph from the west direction prevailed over the region in the forenoon today.

Weather Forecast:

13.03.2025: Partly cloudy sky. Possibility of drizzle towards night. The maximum temperature over Delhi is likely to be in the range of 32 to 34°C. The predominant surface wind will likely be from the northwest direction with a wind speed of less than 14 kmph till evening. It would decrease thereafter becoming less than 06 kmph from the northeast direction during the night.

14.03.2025: Generally cloudy sky. Mist likely in the morning. Possibility of drizzle in the morning and a spell of very light rain/drizzle towards evening. The maximum and minimum temperatures over Delhi are likely to be in the range of 32 to 34°C and 16 to 18°C respectively. The predominant surface wind will likely be from the east direction with a wind speed of 06-08 kmph during morning hours. The wind speed will gradually increase thereafter becoming, 10-12 kmph from the southwest direction during the afternoon. It will decrease becoming less than 06 kmph from the southeast direction during evening and night.

15.03.2025: Generally cloudy sky. Mist likely in the morning. Possibility of very light rain/drizzle. The maximum and minimum temperatures over Delhi are likely to be in the range of 32 to 34°C and 15 to 17°C respectively. The predominant surface wind will likely be from the southeast direction with a wind speed of 04-06 kmph during morning hours. The wind speed will gradually increase becoming 08-10 kmph from the northeast direction in the afternoon. It will decrease becoming less than 06 kmph from the east direction during evening and night.

16.03.2025: Generally cloudy sky. Mist likely in the morning. Possibility of very light rain/drizzle. The maximum and minimum temperatures over Delhi are likely to be in the range of 30 to 32°C and 16 to 18°C respectively. The predominant surface wind will likely be from the northeast direction with a wind speed of 06-08 kmph during morning hours. The wind speed will gradually increase becoming 10-12 kmph from the northwest direction in the afternoon. It will increase becoming less than 18 kmph from the northwest direction during evening and night.

Impact expected and action suggested due to thunderstorm accompanied with lightning/gusty winds over Northeast India and Northwest India during next 5 days

❖ **Impact expected:**

- ❖ Strong wind may damage plantation, horticulture and standing crops.
- ❖ Partial damage to vulnerable structures due to strong winds.
- ❖ Minor damage to kutcha houses/walls and huts.
- ❖ Loose objects may fly.

❖ **Action suggested:**

- ❖ Stay indoors, close windows & doors and avoid travel if possible.
- ❖ Take safe shelters; do not take shelter under trees.
- ❖ Do not lie on concrete floors and do not lean against concrete walls.
- ❖ Unplug electrical/ electronic appliances.
- ❖ Immediately get out of water bodies.
- ❖ Keep away from all the objects that conduct electricity.

Impact & Action Suggested due to heavy rainfall/ snowfall over;

- (i) **Jammu-Kashmir-Ladakh-Gilgit-Baltistan-Muzaffarabad on 14th & 15th; Himachal Pradesh 15th & 16th and Uttarakhand on 16th March**
- (ii) **Arunachal Pradesh during 13th-14th, 16th -17th and over northeast & central Assam on 13th March.**

A. Impact Expected

- ❖ Localized Flooding of roads, water logging in low lying areas and closure of underpasses mainly in urban areas of the above region.
- ❖ Occasional reduction in visibility due to heavy rainfall.
- ❖ Disruption of traffic in major cities due to water logging in roads leading to increased travel time.
- ❖ Minor damage to kutch roads.
- ❖ Possibilities of damage to vulnerable structure.
- ❖ Localized Landslides/Mudslides
- ❖ Damage to horticulture and standing crops in some areas due to inundation.
- ❖ It may lead to riverine flooding in some river catchments (for riverine flooding please visit Web page of CWC).

B. Action Suggested

- ❖ Check for traffic congestion on your route before leaving for your destination.
- ❖ Follow any traffic advisories that are issued in this regard.
- ❖ Avoid going to areas that face the water logging problems often.
- ❖ Avoid staying in vulnerable structure.

Impact expected and action suggested due to Heat wave conditions likely at isolated places over Gujarat State and southwest Rajasthan on 13th; Vidarbha, Chhattisgarh on 13th & 14th; Odisha during 13th-17th; Jharkhand during 14th-17th and Gangetic West Bengal on 15-17th March, 2025.

Orange alert Areas (Odisha during 15-17th March)

- ❖ High temperature & increased likelihood of heat illness symptoms in people who are either exposed to sun for a prolonged period or doing heavy work.
- ❖ High health concern for vulnerable people e.g. infants, elderly, people with chronic diseases.
- ❖ Avoid heat exposure– keep cool. Avoid dehydration.
- ❖ Drink sufficient water- even if not thirsty.
- ❖ Use ORS, homemade drinks like lassi, torani (rice water), lemon water, buttermilk, etc. to keep yourself hydrated.

Yellow alert Areas

- ❖ Moderate temperature & heat is tolerable for general public but moderate health concern likely for vulnerable people e.g. infants, elderly, people with chronic diseases.
- ❖ Avoid heat exposure.
- ❖ Wear lightweight, light colour, loose, cotton clothes.
- ❖ Cover your head, use a cloth, hat or umbrella.

Agromet advisories for likely impact of Heavy Rainfall / Hailstorm / Heat Wave

- Drain out excess water from standing crop and vegetable fields in **South Tamil Nadu, Kerala, Assam and Arunachal Pradesh**; make arrangements to drain out water in **Jammu & Kashmir**.
- In **Assam, Nagaland and Manipur**, immediately harvest matured crops to avoid damage due to hailstorm. Use hail net and hail caps to protect orchards.
- In **South West Rajasthan, Gujarat, Vidarbha, Chhattisgarh, Odisha and Jharkhand**, apply light and frequent irrigation to the standing crops, vegetables and orchards in the evening to protect them from heat wave.
- Keep the harvested produce in safer places or cover the produce with tarpaulin sheets in the fields.
- Provide mechanical support to horticultural crops and staking to vegetables to avoid lodging.

Livestock and Fishery

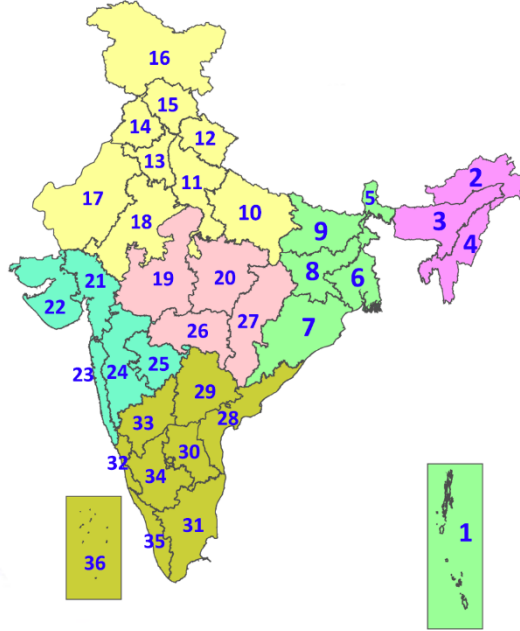
- Keep the animals inside the shed during heavy rainfall/hailstorm and provide them balanced feed.
- Store feed and fodder in a safe place to prevent spoilage.
- Construct an outlet with proper netting around the ponds to drain out excess water, thereby preventing fish from escaping in case of overflow.
- To reduce the effect of heat wave/high temperature, cover the roof of poultry sheds with grass. Also provide clean, hygienic and plenty of drinking water to animals.

Legends & abbreviations:

- ❖ **Heavy Rain:**64.5-115.5mm; **Very Heavy Rain:**115.6-204.4mm; **Extremely Heavy Rain:** >204.4mm.
- ❖ **Obsy:** Observatory; **AWS:** Automatic Weather Station; **ARG:** Automatic Rain Gauge; **dist:** District; **NH:** National Highway; **KVK:** Krishi Vigyan Kendra; **DVC:** Damodar Valley Corporation; **PTO:** Part Time Office, **Aero:** Aerodrome, **IAF:** Indian Air Force.
- ❖ **Region wise classification of meteorological Sub-Divisions:**
 - **Northwest India:** Western Himalayan Region (Jammu-Kashmir-Ladakh-Gilgit-Baltistan-Muzaffarabad, Himachal Pradesh and Uttarakhand); Punjab, Haryana-Chandigarh-Delhi; West Uttar Pradesh, East Uttar Pradesh, West Rajasthan and East Rajasthan.
 - **Central India:** West Madhya Pradesh, East Madhya Pradesh, Vidarbha and Chhattisgarh.
 - **East India:** Bihar, Jharkhand, Sub-Himalayan West Bengal & Sikkim; Gangetic West Bengal, Odisha and Andaman & Nicobar Islands.
 - **Northeast India:** Arunachal Pradesh, Assam & Meghalaya and Nagaland, Manipur, Mizoram & Tripura.
 - **West India:** Gujarat Region, Saurashtra & Kutch, Konkan & Goa, Madhya Maharashtra and Marathawada.
 - **South India:** Coastal Andhra Pradesh & Yanam, Telangana, Rayalaseema, Coastal Karnataka, North Interior Karnataka, South Interior Karnataka, Kerala & Mahe, Tamil Nadu, Puducherry & Karaikal and Lakshadweep.

LEGENDS

1. अंडमान और निकोबार द्वीपसमूह
2. अरुणाचल प्रदेश
3. असम और मेघालय
4. नागालैंड, मणिपुर, मिजोरम और त्रिपुरा
5. उप-हिमालयी पश्चिम बंगाल और सिक्किम
6. गंगीय पश्चिम बंगाल
7. ओडिशा
8. झारखंड
9. बिहार
10. पूर्वी उत्तर प्रदेश
11. पश्चिम उत्तर प्रदेश
12. उत्तराखंड
13. हरियाणा, चंडीगढ़ और दिल्ली
14. पंजाब
15. हिमाचल प्रदेश
16. जम्मू और कश्मीर और लद्दाख
17. पश्चिम राजस्थान
18. पूर्वी राजस्थान
19. पश्चिम मध्य प्रदेश
20. पूर्वी मध्य प्रदेश
21. गुजरात
22. सौराष्ट्र
23. कोंकण और गोवा
24. मध्य महाराष्ट्र
25. मराठवाड़ा
26. विदर्भ
27. छत्तीसगढ़
28. तटीय आंध्र प्रदेश और यनम
29. तेलंगाना
30. रायलसीमा
31. तमिलनाडु, पुडुचेरी और कराईकल
32. तटीय कर्नाटक
33. आंतरिक उत्तरी कर्नाटक
34. आंतरिक दक्षिणी कर्नाटक
35. केरल और माहे
36. लक्षद्वीप



1. Andaman & Nicobar Islands
2. Arunachal Pradesh
3. Assam & Meghalaya
4. Nagaland, Manipur, Mizoram & Tripura
5. Sub-Himalayan West Bengal & Sikkim
6. Gangetic West Bengal
7. Odisha
8. Jharkhand
9. Bihar
10. East Uttar Pradesh
11. West Uttar Pradesh
12. Uttarakhand
13. Haryana, Chandigarh & Delhi
14. Punjab
15. Himachal Pradesh
16. Jammu & Kashmir and Ladakh
17. West Rajasthan
18. East Rajasthan
19. West Madhya Pradesh
20. East Madhya Pradesh
21. Gujarat
22. Saurashtra
23. Konkan & Goa
24. Madhya Maharashtra
25. Marathwada
26. Vidarbha
27. Chhattisgarh
28. Coastal Andhra Pradesh & Yanam
29. Telangana
30. Rayalaseema
31. Tamilnadu, Puducherry & Karaikal
32. Coastal Karnataka
33. North Interior Karnataka
34. South Interior Karnataka
35. Kerala & Mahe
36. Lakshadweep

SPATIAL DISTRIBUTION (% of Stations reporting)

% Stations	Category	% Stations	Category
76-100	Widespread (WS/Most Places)	26-50	Scattered (SCT/A Few Places)
51-75	Fairly Widespread (FWS/Many Places)	1-25	Isolated (ISOL)

- | | | |
|----------------------|----------------------|--------------|
| Fog | Heavy Snow | Cold Wave |
| Heavy Rain | Dust Storm | Cold Day |
| Very Heavy Rain | Heat Wave | Ground Frost |
| Extremely Heavy Rain | Warm Night | |
| Thunder & Lightning | Hot Day | |
| Hailstorm | Hot & Humid | |
| Dust Raising Winds | Strong Surface Winds | |

COLOUR CODED WARNING

No Warning (No Action)
Watch (Be Aware)
Alert (Be Prepared To Take Action)
Warning (Take Action)

Probabilistic Forecast

Terms	Probability of Occurrence (%)
Unlikely	< 25
Likely	25 - 50
Very Likely	50 - 75
Most Likely	> 75

* Red colour warning does not mean "Red Alert", Red colour warning means "Take Action".
Forecast and Warning for any day is valid from 0830 hours IST of day till 0830 hours IST of next day.
For more details, kindly visit <https://mausam.imd.gov.in> or contact: 011-2434-4599
(Service to the Nation since 1875)

DEFINITION/CRITERIA

Rain/ Snow *	Heavy: 64.5 to 115.5 mm/cm * Very Heavy: 115.6 to 204.4 mm/cm * Extremely Heavy: > 204.4 mm/cm *
Heat Wave	When maximum temperature of a station reaches $\geq 40^\circ\text{C}$ for plains and $\geq 30^\circ\text{C}$ for hilly regions (a) Based on Departure from normal Heat Wave: Maximum Temperature Departure from normal 4.5°C to 6.4°C . Severe Heat Wave: Maximum Temperature Departure from normal $\geq 6.5^\circ\text{C}$ (b). Based on Actual maximum temperature Heat Wave: When actual maximum temperature $\geq 45^\circ\text{C}$. Severe Heat Wave: When actual maximum temperature $\geq 47^\circ\text{C}$ (c). Criteria for heat wave for coastal stations When maximum temperature departure is $> 4.5^\circ\text{C}$ from normal. Heat Wave may be described provided maximum temperature $\geq 37^\circ\text{C}$
Warm Night	When maximum temperature remains 40°C Warm Night: When minimum temperature departure 4.5°C to 6.4°C . Severe Warm Night: When minimum temperature departure $> 6.4^\circ\text{C}$.
Cold Wave	When minimum temperature of a station $\leq 10^\circ\text{C}$ for plains and $\leq 0^\circ\text{C}$ for hilly regions. (a). Based on departure Cold Wave: Minimum Temperature Departure from normal -4.5°C to -6.4°C . Severe Cold Wave: Minimum Temperature Departure from normal $\leq -6.5^\circ\text{C}$ (b) Based on actual Minimum Temperature (for Plains only) Cold Wave : When Minimum Temperature is $\leq 4.0^\circ\text{C}$ Severe Cold Wave: When Minimum Temperature is $\leq 2.0^\circ\text{C}$ (c) For Coastal Stations When Minimum Temperature departure is $\leq -4.5^\circ\text{C}$ & actual Minimum Temperature is $\leq 15^\circ\text{C}$
Cold Day	When minimum temperature of a station $\leq 10^\circ\text{C}$ for plains and $\leq 0^\circ\text{C}$ for hilly regions Based on departure Cold Day: Maximum Temperature Departure from normal -4.5°C to -6.4°C . Severe Cold Day: Maximum Temperature Departure from normal $\leq -6.5^\circ\text{C}$
Fog	Phenomenon of small droplets suspended in air and the horizontal visibility $< 1\text{km}$ Moderate Fog: When the visibility between 500-200 metres Dense Fog: when the visibility between 50- 200 metres Very Dense Fog: when the visibility < 50 metres
Thunderstorm	Sudden electrical discharges manifested by a flash of light (Lightning) and a sharp rumbling sound (thunder)
Dust/Sand Storm	An ensemble of particles of dust or sand energetically lifted to great heights by a strong and turbulent wind.
Frost	Ice deposits on ground Air temperature $\leq 4^\circ\text{C}$ (over Plains)
Squall	A strong wind that rises suddenly, lasts for atleast 1 minute. Moderate: Wind speed 52-61 kmph Severe: Wind speed 62-87 kmph Very Severe: Wind speed > 87 kmph
Sea State	Effect of various waves in the sea over specific area Rough to very rough: Wind speed 41-62 kmph (22-33 knots) & Wave height 2.5-6 metre High to very high: Wind speed 63-117 kmph (34-63 knots) & Wave height 6-14 metre Phenomenal: Wind speed > 117 kmph (> 63 knots) & Wave height > 14 metre
Cyclone	Cyclonic Storm: Wind speed 62-87 kmph (34-47 knots) Severe Cyclonic Storm: Wind speed 88-117 kmph (48-63 knots) Very Severe Cyclonic Storm: Wind speed 118-165 kmph (64 - 89 knots) Extremely Severe Cyclonic Storm: Wind speed 166-220 kmph (90 -119 knots) Super Cyclone Strom: Wind speed > 220 kmph (> 119 knots)

* Red colour warning does not mean "Red Alert", Red colour warning means "Take Action".
 Forecast and Warning for any day is valid from 0830 hours IST of day till 0830 hours IST of next day.
 For more details, kindly visit <https://mausam.imd.gov.in> or contact: 011-2434-4599
 (Service to the Nation since 1875)

Hot and Humid: When maximum temperatures remain 3°C above normal along with the above normal relative humidity.