



Government of India  
Ministry of Earth Sciences  
India Meteorological Department



Press Release

Date: 03<sup>rd</sup> April, 2025

Time of Issue: 1330 hours IST

- Subject:**
- Moderate to intense Thunderstorm along with lightning & hailstorm activity likely over central & adjoining north Peninsular India during next 2 days.**
  - Thunderstorm, lightning along with isolated heavy rainfall likely over many parts of South Peninsular India during 03<sup>rd</sup> to 05<sup>th</sup> April, 2025.**
  - A fresh spell of heatwave likely over parts of northwest India from 6<sup>th</sup> to 9<sup>th</sup> April.**

**i. Realised weather during past 24 hours till 0830 hours IST of today, the 03<sup>rd</sup> April 2025 (Annexure I):**

- ❖ **Squally/Gusty winds** prevailed at isolated locations over Madhya Pradesh, Vidarbha, Chhattisgarh, Jammu-Kashmir-Ladakh-Gilgit-Baltistan-Muzaffarabad, Assam & Meghalaya, Marathwada, Madhya Maharashtra, Interior Karnataka, Telangana, Tamil Nadu.
- ❖ **Heavy rainfall** occurred at isolated places over Konkan and Tamil Nadu.
- ❖ **Hailstorm** occurred at isolated places over Madhya Pradesh.
- ❖ **Heatwave** prevailed at isolated pockets over Saurashtra & Kutch.

**For more details of realised weather, kindly refer [Annexure I](#)**

**Temperature:**

- ❖ Temperature observations during past 24 hours till 0830 hours IST of today are provided in [Annexure II](#).

**ii. Weather Systems, Forecast and Warnings (Annexure III & IV):**

- ❖ An upper air Cyclonic Circulation lies over Marathwada & adjoining Madhya Maharashtra in the lower tropospheric levels.
- ❖ An upper air trough in easterlies runs from South Interior Karnataka to southwest Madhya Pradesh across the above cyclonic circulation over Marathwada in the lower tropospheric levels.
- ❖ An upper air Cyclonic Circulation lies over Sub-Himalayan West Bengal & adjoining Bangladesh in the lower tropospheric levels.
- ❖ An upper air cyclonic circulation lies over southeast Arabian Sea and a trough runs from the this cyclonic circulation to south Kerala in lower tropospheric levels.
- ❖ Under the influence of these systems and confluence of moist winds from Arabian sea and Bay of Bengal in lower tropospheric levels;
  - ✓ **Isolated to Scattered** light/moderate rainfall accompanied with **thunderstorm, lightning & gusty winds (speed 40-50 kmph)** likely over South Peninsular India during 03<sup>rd</sup>-05<sup>th</sup>; Central India, Maharashtra, Gangetic West Bengal, Jharkhand and Odisha on 03<sup>rd</sup> & April.
  - ✓ **Isolated Hailstorm** likely over East Rajasthan, Madhya Pradesh, Vidarbha, Telangana on 03<sup>rd</sup>; Jharkhand on 04<sup>th</sup>; Assam & Meghalaya, Nagaland, Manipur, Mizoram & Tripura on 05<sup>th</sup> April.
  - ✓ **Heavy rainfall** very likely at isolated places over Kerala & Mahe, South Interior Karnataka during 03<sup>rd</sup>-06<sup>th</sup>; Tamil Nadu during 03<sup>rd</sup>-05<sup>th</sup>; Coastal Karnataka on 03<sup>rd</sup> & 04<sup>th</sup>; North Interior Karnataka, Andaman & Nicobar Islands on 03<sup>rd</sup>; Assam & Meghalaya, Nagaland, Manipur, Mizoram & Tripura on 05<sup>th</sup> & 06<sup>th</sup>; Arunachal Pradesh on 05<sup>th</sup> April.

### Temperature Forecast:

- ❖ Gradual rise in maximum temperatures by 3-5°C likely over Northwest India during next 6 days.
- ❖ No significant change in maximum temperatures likely over Central India during next 2 days and gradual rise by 2-4°C during subsequent 5 days.
- ❖ No significant change in maximum temperatures likely over West India during next 24 hours and rise by 2-3°C during subsequent 5 days.
- ❖ No significant change in maximum temperatures likely over south peninsular India during next 3 days and rise by 2-3°C during subsequent 4 days.
- ❖ No significant change in maximum temperatures likely over rest parts of the country during next 7 days.

### Heat wave and Hot & Humid weather warning:

- ❖ **Heat Wave conditions very likely to continue to prevail at isolated/some pockets of Saurashtra & Kutch during 03<sup>rd</sup>-08<sup>th</sup>; in isolated pockets of West Rajasthan during 06<sup>th</sup>-09<sup>th</sup>; Gujarat Region during 06<sup>th</sup>-08<sup>th</sup>; East Rajasthan, Punjab, Haryana during 07<sup>th</sup>-09<sup>th</sup> April.**
- ❖ **Hot & humid weather is likely over Gujarat state during 03<sup>rd</sup>-09<sup>th</sup> and over Konkan & Goa during 05<sup>th</sup>-09<sup>th</sup> April, 2025.**

### iv. Weather conditions and forecast over Delhi/NCR during 03<sup>rd</sup> April to 06<sup>th</sup> April, 2025 (Annexure V)

For more details, kindly refer National Weather Bulletin:

[https://mausam.imd.gov.in/responsive/all\\_india\\_forecast\\_bulletin.php](https://mausam.imd.gov.in/responsive/all_india_forecast_bulletin.php)

For District wise warnings refer:

<https://mausam.imd.gov.in/responsive/districtWiseWarningGIS.php>

## ANNEXURE I

### Significant weather reported during past 24 hours till 0830 hours IST of today:

- ❖ **Light/moderate Rainfall** observed at many places over Andaman & Nicobar Islands; at few places over Vidarbha, Arunachal Pradesh, Tamilnadu Puducherry & Karaikal, Kerala & Mahe, Lakshadweep, Coastal Karnataka; at isolated places over East Uttar Pradesh, East Rajasthan, Madhya Pradesh, Chhattisgarh, Gangetic West Bengal, Jharkhand, Odisha, Assam & Meghalaya, Interior Karnataka, Konkan & Goa, Madhya Maharashtra and Marathwada.
- ❖ **Thunderstorm with lightning** reported at isolated places over Madhya Pradesh, Vidarbha, Chhattisgarh, Jammu-Kashmir-Ladakh-Gilgit-Baltistan-Muzaffarabad, East Rajasthan, Assam & Meghalaya, Konkan & Goa, Madhya Maharashtra, Marathwada, Tamil Nadu, Puducherry & Karaikal, Konkan & Goa, Coastal & South Interior Karnataka.

### Rainfall recorded (in cm):

- ❖ **Tamil Nadu Puducherry & Karaikal:** Sivagiri (dist Tenkasi) 11, Tondi (dist Ramanathapuram), Tirumangalam (dist Madurai) 9 each, Madurai Airport (dist Madurai) 7, Kovilankulam (dist Virudhunagar), Sivaganga (dist Sivagangai) 6 each,
- ❖ **Konkan & Goa:** Devgad (dist Sindhudurg) 7, Vaibhavwadi (dist Sindhudurg) 3, Ratnagiri - Imd Obsy (dist Ratnagiri) 3,
- ❖ **Kerala & Mahe:** Punalur (Kollam district) & Myladumpara (Idukki district) 4 each,
- ❖ **Madhya Maharashtra:** Satna Baglan (dist Nashik) 3,

### Hailstorm reported:

- ❖ **Madhya Pradesh:** Rajgarh, Mandsaur, Dhar, Guna, Ashoknagar, Vidisha, Seoni

### **Squally winds/ Gusty winds reported (in knots):**

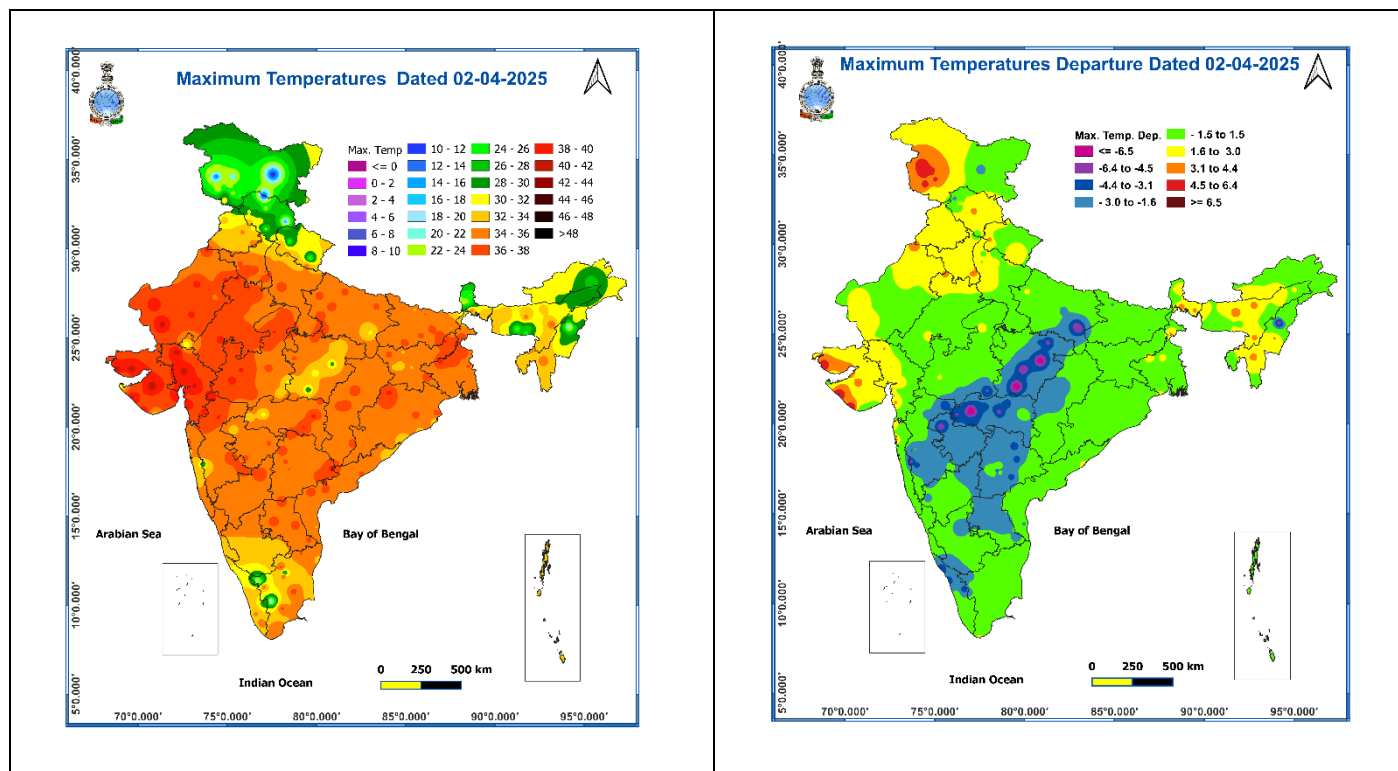
- ❖ North Interior Karnataka: Kalaburagi AP 25; Tidagundi(Vijayapura dt)20;
- ❖ South Interior Karnataka: Agumbe (Shivamogga) 19;
- ❖ Assam: Boko (23);
- ❖ Telangana: Basanthpur (27),
- ❖ Tamil Nadu: Paiyur\_AMFU(21), Natham\_ISRO(19), Aruppukottai(24)
- ❖ East Madhya Pradesh: Aonwari(21), Aron(25),
- ❖ Vidarbha: Wardha(22),
- ❖ Konkan & Goa: Devgad(32),,
- ❖ Madhya Maharashtra: Dhule(29),
- ❖ Marathwada: Tulga(21), Ambejogai(21)

**Temperature observations during past 24 hours till 0830 hours IST of today:**

- ❖ Yesterday, Maximum Temperatures showed **rising tendency** during past 24 hours by **1-3°C** over many places of the Punjab, Haryana Chandigarh & Delhi, West Uttar Pradesh, West Rajasthan, Vidarbha, Madhya Maharashtra; **falling tendency** by 2-5°C at many places over East Madhya Pradesh, Odisha, Bihar, East Uttar Pradesh and **1-2°C** over many parts of south peninsular India and no significant change over the rest parts of the country.
- ❖ Yesterday's **Maximum Temperatures** were in the range of 39-41°C in some parts of Gujarat, south Rajasthan, southwest Madhya Pradesh, southeast Uttar Pradesh, south Marathwada adjoining north interior Karnataka and Telangana, Vidarbha, interior Odisha; 35-38 °C over remaining parts of Rajasthan, Uttar Pradesh, Maharashtra, Telangana and Odisha, Chhattisgarh, Bihar, Jharkhand, West Bengal, North interior Karnataka & adjoining coastal & south interior Karnataka, south Tamil Nadu, Andhra Pradesh; 30-34 °C over Punjab, Haryana, Chandigarh, Delhi, remaining parts of Karnataka, Tamil Nadu, Islands, west Assam, Nagaland, Manipur, Mizoram and 20-29 °C over Western Himalayan Region. Yesterday, the highest maximum temperature of **42.8°C was reported at Surendranagar (Saurashtra & Kutch)** over the country. **(Fig.1)**
- ❖ Yesterday, Maximum Temperatures were **above normal** by 2-5°C over Jammu-Kashmir-Ladakh-Gilgit-Baltistan-Muzaffarabad, Punjab, Haryana Chandigarh & Delhi, Rajasthan, Gujarat state, Nagaland, Manipur, Mizoram & Tripura, West Assam & Meghalaya, Sub-Himalayan West Bengal & Sikkim; **below normal** by 2-6°C over southeast Uttar Pradesh, East Madhya Pradesh, Maharashtra, Telangana, Rayalaseema, interior Karnataka and near normal of rest parts of the country. **(Fig. 2).**

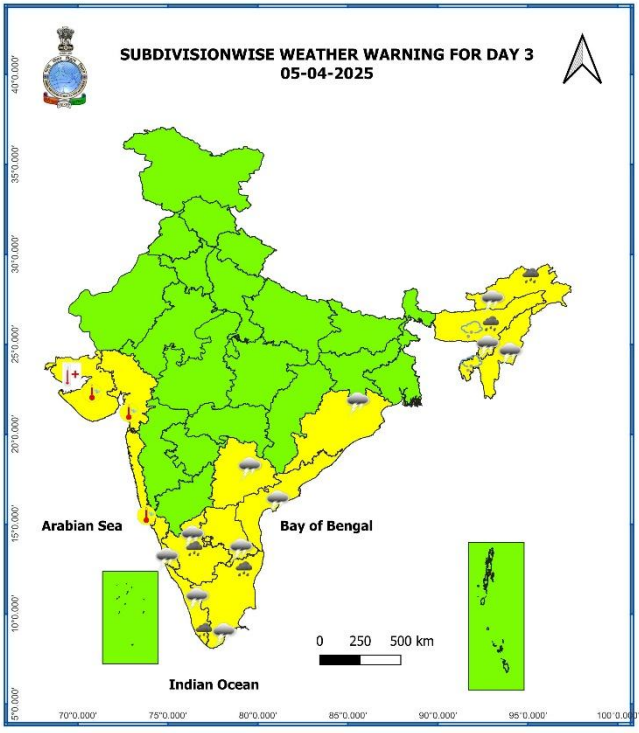
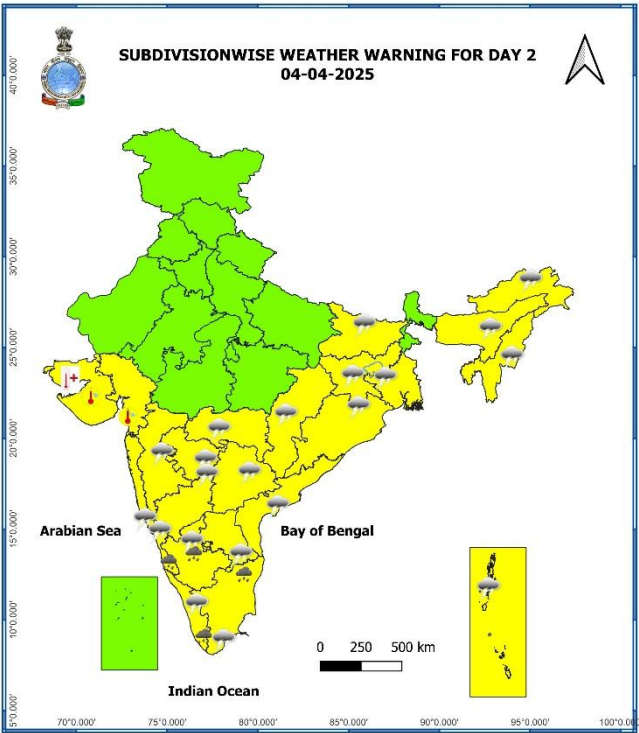
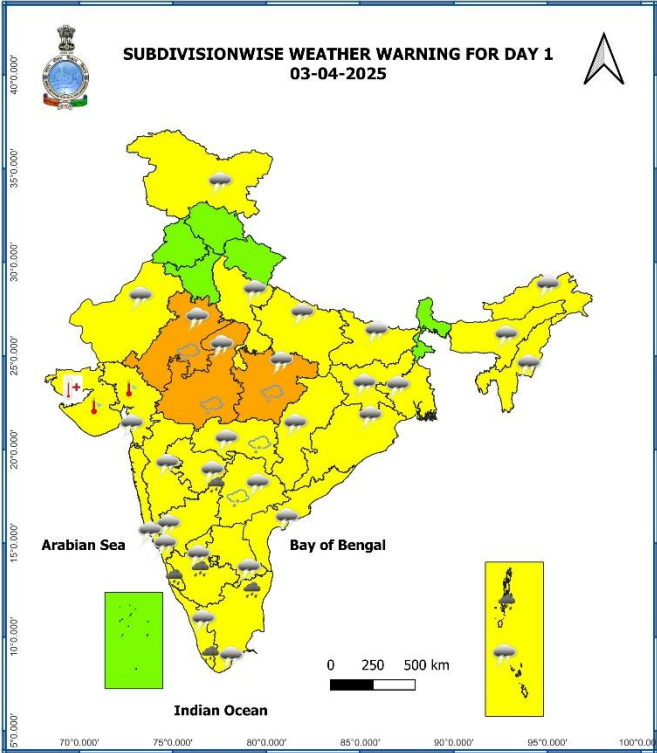
**Fig. 1: Maximum Temperatures**

**Fig. 2: Departure of Maximum Temperatures**

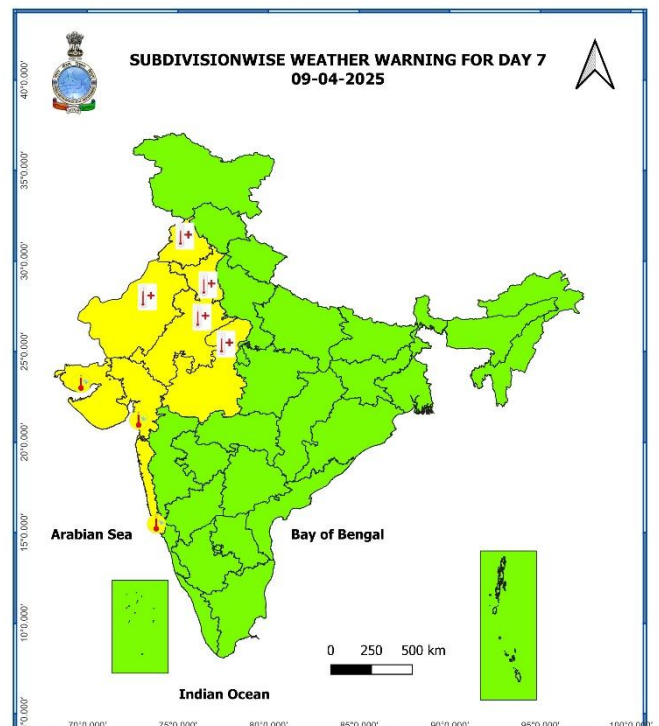
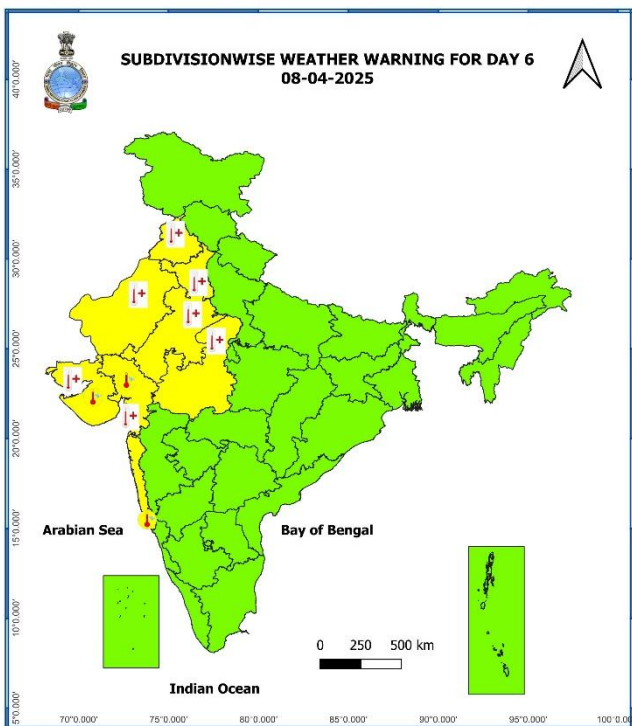
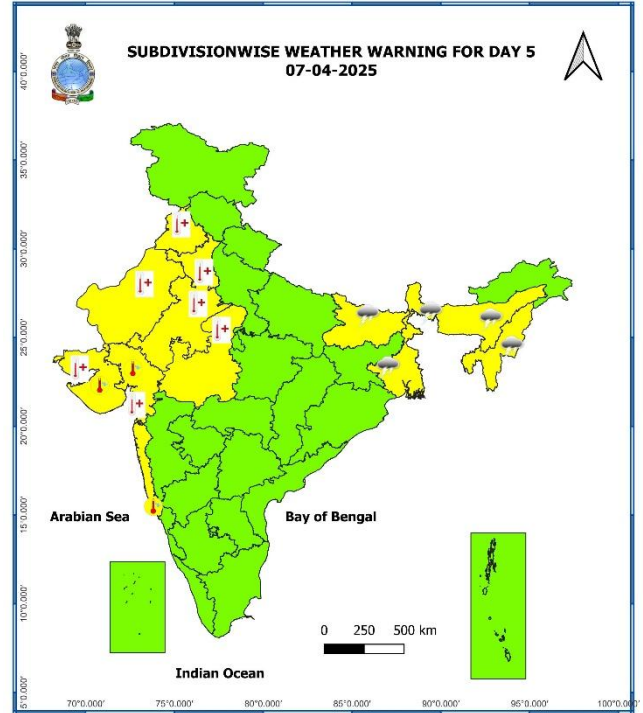
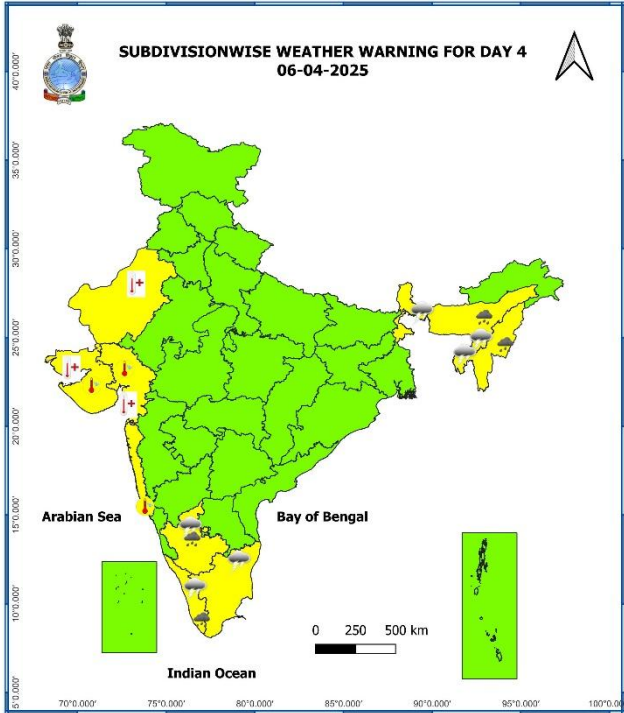


7 Days Rainfall Forecast								
S. No.	Subdivision	03-Apr	04-Apr	05-Apr	06-Apr	07-Apr	08-Apr	09-Apr
		Day 1	Day 2	Day 3	Day 4	Day 5	Day 6	Day 7
1	ANDAMAN & NICOBAR ISLANDS	WS	WS	WS	FWS	FWS	SCT	SCT
2	ARUNACHAL PRADESH	SCT	SCT	ISOL	ISOL	ISOL	ISOL	ISOL
3	ASSAM & MEGHALAYA	ISOL	ISOL	FWS	FWS	SCT	SCT	SCT
4	NAGALAND, MANIPUR, MIZORAM & TRIPURA	ISOL	ISOL	SCT	FWS	SCT	SCT	SCT
5	SUB-HIMALAYAN WEST BENGAL & SIKKIM	ISOL	ISOL	ISOL	ISOL	SCT	SCT	FWS
6	GANGETIC WEST BENGAL	ISOL	SCT	DRY	ISOL	SCT	ISOL	ISOL
7	ODISHA	ISOL	ISOL	ISOL	DRY	DRY	ISOL	ISOL
8	JHARKHAND	ISOL	ISOL	DRY	DRY	ISOL	ISOL	DRY
9	BIHAR	ISOL	DRY	DRY	DRY	ISOL	ISOL	DRY
10	EAST UTTAR PRADESH	ISOL	DRY	DRY	DRY	DRY	ISOL	ISOL
11	WEST UTTAR PRADESH	ISOL	DRY	DRY	DRY	DRY	DRY	ISOL
12	UTTARAKHAND	ISOL	ISOL	DRY	DRY	DRY	ISOL	ISOL
13	HARYANA CHANDIGARH & DELHI	ISOL	DRY	DRY	DRY	DRY	DRY	DRY
14	PUNJAB	DRY	DRY	DRY	DRY	DRY	DRY	DRY
15	HIMACHAL PRADESH	ISOL	DRY	DRY	DRY	DRY	ISOL	ISOL
16	JAMMU & KASHMIR AND LADAKH	SCT	DRY	DRY	DRY	DRY	SCT	FWS
17	WEST RAJASTHAN	ISOL	DRY	DRY	DRY	DRY	DRY	DRY
18	EAST RAJASTHAN	ISOL	DRY	DRY	DRY	DRY	DRY	DRY
19	WEST MADHYA PRADESH	ISOL	DRY	DRY	DRY	DRY	DRY	DRY
20	EAST MADHYA PRADESH	ISOL	DRY	DRY	DRY	DRY	DRY	DRY
21	GUJARAT REGION	ISOL	DRY	DRY	DRY	DRY	DRY	DRY
22	SAURASHTRA & KUTCH	DRY	DRY	DRY	DRY	DRY	DRY	DRY
23	KONKAN & GOA	ISOL	ISOL	ISOL	DRY	DRY	ISOL	ISOL
24	MADHYA MAHARASHTRA	ISOL	ISOL	ISOL	ISOL	DRY	ISOL	ISOL
25	MARATHAWADA	ISOL	ISOL	ISOL	ISOL	DRY	ISOL	ISOL
26	VIDARBHA	SCT	ISOL	DRY	DRY	DRY	ISOL	ISOL
27	CHHATTISGARH	ISOL	ISOL	ISOL	DRY	DRY	ISOL	ISOL
28	COASTAL ANDHRA PRADESH & YANAM	SCT	SCT	SCT	ISOL	ISOL	ISOL	ISOL
29	TELANGANA	FWS	SCT	ISOL	DRY	ISOL	ISOL	DRY
30	RAYALASEEMA	SCT	SCT	SCT	ISOL	ISOL	ISOL	ISOL
31	TAMILNADU PUDUCHERRY & KARAIKAL	SCT	SCT	SCT	ISOL	ISOL	ISOL	ISOL
32	COASTAL KARNATAKA	WS	FWS	FWS	SCT	ISOL	SCT	SCT
33	NORTH INTERIOR KARNATAKA	WS	SCT	ISOL	ISOL	ISOL	SCT	SCT
34	SOUTH INTERIOR KARNATAKA	WS	FWS	SCT	ISOL	ISOL	SCT	SCT
35	KERALA & MAHE	WS	WS	WS	FWS	SCT	SCT	FWS
36	LAKSHADWEEP	SCT	SCT	SCT	SCT	SCT	SCT	SCT

- As the lead period increases forecast accuracy decreases.







- Action may be taken based on **ORANGE AND RED COLOUR** warnings.
- Vulnerable regions likely urban and hilly areas action may be initiated for heavy rainfall warning.
- As the lead period increases forecast accuracy decreases.

Detailed district wise Multi Hazard weather warning for next five days available at <https://mausam.imd.gov.in/responsive/districtWiseWarningGIS.php>

**Weather forecast over Delhi/NCR during 03<sup>rd</sup> to 06<sup>th</sup> Apr. 2025****Past Weather:**

There has been rise in minimum and maximum temperature upto 02°C over Delhi/NCR during the past 24 hours. The maximum and minimum temperatures over Delhi are in the range of 36 to 38 °C and 15 to 19 °C respectively. The minimum temperature was below normal upto 03 °C and maximum temperature was above normal upto 04 °C at most places. Mainly clear sky conditions with predominant surface wind from the northwest direction with wind speeds less than 16 to 18 kmph prevailed during the past 24 hours. Mainly clear sky conditions with wind speed less than 10 kmph from the southeast direction prevailed over the region in the forenoon today.

**Weather Forecast:**

**03.04.2025:** Partly cloudy sky. Surface winds (speed 10-20 kmph) occasionally gusting to 30 kmph during the day time .The maximum temperature over Delhi is likely to be in the range of 37 to 39°C. The predominant surface wind will likely be from the south direction with a wind speed of less than 12 kmph till evening. It would becoming less than 12 kmph from the northeast direction during the night.

**04.04.2025:** Mainly clear sky. Surface winds (speed 15-25 kmph) occasionally gusting to 35 kmph. The maximum and minimum temperatures over Delhi are likely to be in the range of 37 to 39°C and 18 to 20°C respectively. The predominant surface wind will likely be from the Northwest direction with a wind speed of 08-10 kmph during morning hours. The wind speed will gradually increase thereafter becoming 20-25 kmph from the Northwest direction during the afternoon. It will decrease becoming less than 14 kmph from the Northwest direction during evening and night.

**05.04.2025:** Mainly clear sky. Surface winds (speed 10-20 kmph) occasionally gusting to 30 kmph. The maximum and minimum temperatures over Delhi are likely to be in the range of 36 to 38°C and 18 to 20°C respectively. The predominant surface wind will likely be from the Northwest direction with a wind speed of 10-12 kmph during morning hours. The wind speed will gradually increase becoming 20-25 kmph from the northwest direction in the afternoon. It will decrease becoming less than 08 kmph from the northwest direction during evening and night.

**06.04.2025:** Mainly clear sky. The maximum and minimum temperatures over Delhi are likely to be in the range of 38 to 40 °C and 19 to 21°C respectively. The predominant surface wind will likely be from the northwest direction with a wind speed of 08-10 kmph during morning hours. The wind speed will gradually increase becoming 14-16 kmph from the northwest direction in the afternoon. It will decrease becoming less than 10 kmph from the northeast direction during evening and night.



**Impact expected and action suggested due Heat Wave conditions over Saurashtra & Kutch during 03rd-08th; in isolated pockets of West Rajasthan during 06<sup>th</sup>-09<sup>th</sup>; Gujarat Region during 06th-08th; East Rajasthan, Punjab, Haryana during 07<sup>th</sup> -09<sup>th</sup> April.**

**Orange alert Areas**

- High temperature & increased likelihood of heat illness symptoms in people who are either exposed to sun for a prolonged period or doing heavy work.
- High health concern for vulnerable people e.g. infants, elderly, people with chronic diseases.
- Avoid heat exposure– keep cool. Avoid dehydration.
- Drink sufficient water- even if not thirsty.
- Use ORS, homemade drinks like lassi, torani (rice water), lemon water, buttermilk, etc. to keep yourself hydrated.

**Yellow alert Areas**

- Moderate temperature & heat is tolerable for general public but moderate health concern likely for vulnerable people e.g. infants, elderly, people with chronic diseases.
- Avoid heat exposure.
- Wear lightweight, light colour, loose, cotton clothes.
- Cover your head, use a cloth, hat or umbrella.

**Impact expected and action suggested due to isolated thunderstorm with lightning/gusty winds & Hailstorm over central and adjoining North Peninsular India on 03<sup>rd</sup> & 04<sup>th</sup> April.**

**Impact expected:**

- Strong wind/hail may damage plantation, horticulture and standing crops.
- Hail may injure people and cattle at open places.
- Partial damage to vulnerable structures due to strong winds.
- Minor damage to kutcha houses/walls and huts.
- Loose objects may fly.

**Action suggested:**

- Stay indoors, close windows & doors and avoid travel if possible.
- Take safe shelters; do not take shelter under trees.
- Do not lie on concrete floors and do not lean against concrete walls.
- Unplug electrical/ electronic appliances.
- Immediately get out of water bodies.
- Keep away from all the objects that conduct electricity.

## **Agromet advisories for likely impact of Hailstorm / Heavy Rainfall / Gusty Winds / Heatwave**

- In **Jharkhand, East Rajasthan, Madhya Pradesh, Vidarbha, North Interior Karnataka and Telangana**, immediately harvest the matured crops, fruits and vegetables and shift the harvested produce in safer places or cover the produce with tarpaulin sheets in the fields to avoid the adverse impact of likely hailstorm. Use hail net and hail caps to prevent mechanical damage in orchards due to hailstorms.
- In **Andaman & Nicobar Islands, Karnataka and North Eastern states**, immediately harvest the matured crops, fruits and vegetables and shift the harvested produce in safer places or cover the produce with tarpaulin sheets in the fields. Also make provision to drain out excess water from standing crop and vegetable fields.
- In **Tamilnadu and Kerala**, drain out excess water from standing crop and vegetable fields.
- In **Saurashtra & Kutch**, apply light and frequent irrigation to standing crops in the evening to protect them from heat waves.
- Provide mechanical support to horticultural crops and staking to vegetables to avoid lodging.

### **Livestock / Poultry / Fishery**

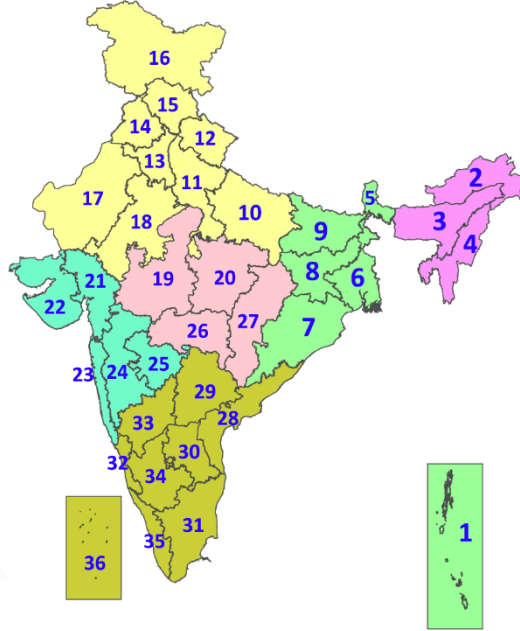
- Keep the animals inside the shed during heavy rainfall/hailstorm and provide them balanced feed.
- Store feed and fodder in a safe place to prevent spoilage.
- To reduce the effect of heat wave/high temperature, cover the roof of poultry sheds with grass. Also provide clean, hygienic and plenty of drinking water to animals.
- Construct an outlet with proper netting around the ponds to drain out excess water, thereby preventing fish from escaping in case of overflow.

## Legends & abbreviations:

- ❖ **Heavy Rain:**64.5-115.5mm; **Very Heavy Rain:**115.6-204.4mm; **Extremely Heavy Rain:** >204.4mm.
- ❖ **Obsy:** Observatory; **AWS:** Automatic Weather Station; **ARG:** Automatic Rain Gauge; **dist:** District; **NH:** National Highway; **KVK:** Krishi Vigyan Kendra; **DVC:** Damodar Valley Corporation; **PTO:** Part Time Office, **Aero:** Aerodrome, **IAF:** Indian Air Force.
- ❖ **Region wise classification of meteorological Sub-Divisions:**
  - **Northwest India:** Western Himalayan Region (Jammu-Kashmir-Ladakh-Gilgit-Baltistan-Muzaffarabad, Himachal Pradesh and Uttarakhand); Punjab, Haryana-Chandigarh-Delhi; West Uttar Pradesh, East Uttar Pradesh, West Rajasthan and East Rajasthan.
  - **Central India:** West Madhya Pradesh, East Madhya Pradesh, Vidarbha and Chhattisgarh.
  - **East India:** Bihar, Jharkhand, Sub-Himalayan West Bengal & Sikkim; Gangetic West Bengal, Odisha and Andaman & Nicobar Islands.
  - **Northeast India:** Arunachal Pradesh, Assam & Meghalaya and Nagaland, Manipur, Mizoram & Tripura.
  - **West India:** Gujarat Region, Saurashtra & Kutch, Konkan & Goa, Madhya Maharashtra and Marathawada.
  - **South India:** Coastal Andhra Pradesh & Yanam, Telangana, Rayalaseema, Coastal Karnataka, North Interior Karnataka, South Interior Karnataka, Kerala & Mahe, Tamil Nadu, Puducherry & Karaikal and Lakshadweep.

## LEGENDS

1. अंडमान और निकोबार द्वीपसमूह
2. अरुणाचल प्रदेश
3. असम और मेघालय
4. नागालैंड, मणिपुर, मिजोरम और त्रिपुरा
5. उप-हिमालयी पश्चिम बंगाल और सिक्किम
6. गंगीय पश्चिम बंगाल
7. ओडिशा
8. झारखंड
9. बिहार
10. पूर्वी उत्तर प्रदेश
11. पश्चिम उत्तर प्रदेश
12. उत्तराखंड
13. हरियाणा, चंडीगढ़ और दिल्ली
14. पंजाब
15. हिमाचल प्रदेश
16. जम्मू और कश्मीर और लद्दाख
17. पश्चिम राजस्थान
18. पूर्वी राजस्थान
19. पश्चिम मध्य प्रदेश
20. पूर्वी मध्य प्रदेश
21. गुजरात
22. सौराष्ट्र
23. कोंकण और गोवा
24. मध्य महाराष्ट्र
25. मराठवाड़ा
26. विदर्भ
27. छत्तीसगढ़
28. तटीय आंध्र प्रदेश और यनम
29. तेलंगाना
30. रायलसीमा
31. तमिलनाडु, पुडुचेरी और कराईकल
32. तटीय कर्नाटक
33. आंतरिक उत्तरी कर्नाटक
34. आंतरिक दक्षिणी कर्नाटक
35. केरल और माहे
36. लक्षद्वीप



1. Andaman & Nicobar Islands
2. Arunachal Pradesh
3. Assam & Meghalaya
4. Nagaland, Manipur, Mizoram & Tripura
5. Sub-Himalayan West Bengal & Sikkim
6. Gangetic West Bengal
7. Odisha
8. Jharkhand
9. Bihar
10. East Uttar Pradesh
11. West Uttar Pradesh
12. Uttarakhand
13. Haryana, Chandigarh & Delhi
14. Punjab
15. Himachal Pradesh
16. Jammu & Kashmir and Ladakh
17. West Rajasthan
18. East Rajasthan
19. West Madhya Pradesh
20. East Madhya Pradesh
21. Gujarat
22. Saurashtra
23. Konkan & Goa
24. Madhya Maharashtra
25. Marathwada
26. Vidarbha
27. Chhattisgarh
28. Coastal Andhra Pradesh & Yanam
29. Telangana
30. Rayalaseema
31. Tamilnadu, Puducherry & Karaikal
32. Coastal Karnataka
33. North Interior Karnataka
34. South Interior Karnataka
35. Kerala & Mahe
36. Lakshadweep

## SPATIAL DISTRIBUTION (% of Stations reporting)

% Stations	Category	% Stations	Category
76-100	Widespread (WS/Most Places)	26-50	Scattered (SCT/A Few Places)
51-75	Fairly Widespread (FWS/Many Places)	1-25	Isolated (ISOL)

- |                      |                      |              |
|----------------------|----------------------|--------------|
| Fog                  | Heavy Snow           | Cold Wave    |
| Heavy Rain           | Dust Storm           | Cold Day     |
| Very Heavy Rain      | Heat Wave            | Ground Frost |
| Extremely Heavy Rain | Warm Night           |              |
| Thunder & Lightning  | Hot Day              |              |
| Hailstorm            | Hot & Humid          |              |
| Dust Raising Winds   | Strong Surface Winds |              |

### COLOUR CODED WARNING

No Warning (No Action)
Watch (Be Aware)
Alert (Be Prepared To Take Action)
Warning (Take Action)

### Probabilistic Forecast

Terms	Probability of Occurrence (%)
Unlikely	< 25
Likely	25 - 50
Very Likely	50 - 75
Most Likely	> 75

\* Red colour warning does not mean "Red Alert", Red colour warning means "Take Action".  
Forecast and Warning for any day is valid from 0830 hours IST of day till 0830 hours IST of next day.  
For more details, kindly visit <https://mausam.imd.gov.in> or contact: 011-2434-4599  
(Service to the Nation since 1875)

## DEFINITION/CRITERIA

<b>Rain/ Snow *</b>	<b>Heavy:</b> 64.5 to 115.5 mm/cm * <b>Very Heavy:</b> 115.6 to 204.4 mm/cm * <b>Extremely Heavy:</b> > 204.4 mm/cm *
<b>Heat Wave</b>	<b>When maximum temperature of a station reaches <math>\geq 40^\circ\text{C}</math> for plains and <math>\geq 30^\circ\text{C}</math> for hilly regions</b> <b>(a) Based on Departure from normal</b> <b>Heat Wave:</b> Maximum Temperature Departure from normal $4.5^\circ\text{C}$ to $6.4^\circ\text{C}$ . <b>Severe Heat Wave:</b> Maximum Temperature Departure from normal $\geq 6.5^\circ\text{C}$ <b>(b). Based on Actual maximum temperature</b> <b>Heat Wave:</b> When actual maximum temperature $\geq 45^\circ\text{C}$ . <b>Severe Heat Wave:</b> When actual maximum temperature $\geq 47^\circ\text{C}$ <b>(c). Criteria for heat wave for coastal stations</b> When maximum temperature departure is $> 4.5^\circ\text{C}$ from normal. Heat Wave may be described provided maximum temperature $\geq 37^\circ\text{C}$
<b>Warm Night</b>	<b>When maximum temperature remains <math>40^\circ\text{C}</math></b> <b>Warm Night:</b> When minimum temperature departure $4.5^\circ\text{C}$ to $6.4^\circ\text{C}$ . <b>Severe Warm Night:</b> When minimum temperature departure $> 6.4^\circ\text{C}$ .
<b>Cold Wave</b>	<b>When minimum temperature of a station <math>\leq 10^\circ\text{C}</math> for plains and <math>\leq 0^\circ\text{C}</math> for hilly regions.</b> <b>(a). Based on departure</b> <b>Cold Wave:</b> Minimum Temperature Departure from normal $-4.5^\circ\text{C}$ to $-6.4^\circ\text{C}$ . <b>Severe Cold Wave:</b> Minimum Temperature Departure from normal $\leq -6.5^\circ\text{C}$ <b>(b) Based on actual Minimum Temperature (for Plains only)</b> <b>Cold Wave :</b> When Minimum Temperature is $\leq 4.0^\circ\text{C}$ <b>Severe Cold Wave:</b> When Minimum Temperature is $\leq 2.0^\circ\text{C}$ <b>(c) For Coastal Stations</b> When Minimum Temperature departure is $\leq -4.5^\circ\text{C}$ & actual Minimum Temperature is $\leq 15^\circ\text{C}$
<b>Cold Day</b>	<b>When minimum temperature of a station <math>\leq 10^\circ\text{C}</math> for plains and <math>\leq 0^\circ\text{C}</math> for hilly regions</b> <b>Based on departure</b> <b>Cold Day:</b> Maximum Temperature Departure from normal $-4.5^\circ\text{C}$ to $-6.4^\circ\text{C}$ . <b>Severe Cold Day:</b> Maximum Temperature Departure from normal $\leq -6.5^\circ\text{C}$
<b>Fog</b>	<b>Phenomenon of small droplets suspended in air and the horizontal visibility <math>&lt; 1\text{km}</math></b> <b>Moderate Fog:</b> When the visibility between 500-200 metres <b>Dense Fog:</b> when the visibility between 50- 200 metres <b>Very Dense Fog:</b> when the visibility $< 50$ metres
<b>Thunderstorm</b>	Sudden electrical discharges manifested by a flash of light (Lightning) and a sharp rumbling sound (thunder)
<b>Dust/Sand Storm</b>	An ensemble of particles of dust or sand energetically lifted to great heights by a strong and turbulent wind.
<b>Frost</b>	<b>Ice deposits on ground</b> Air temperature $\leq 4^\circ\text{C}$ ( over Plains)
<b>Squall</b>	<b>A strong wind that rises suddenly, lasts for atleast 1 minute.</b> <b>Moderate:</b> Wind speed 52-61 kmph <b>Severe:</b> Wind speed 62-87 kmph <b>Very Severe:</b> Wind speed $> 87$ kmph
<b>Sea State</b>	<b>Effect of various waves in the sea over specific area</b> <b>Rough to very rough:</b> Wind speed 41-62 kmph (22-33 knots) & Wave height 2.5-6 metre <b>High to very high:</b> Wind speed 63-117 kmph ( 34-63 knots) & Wave height 6-14 metre <b>Phenomenal:</b> Wind speed $> 117$ kmph ( $> 63$ knots) & Wave height $> 14$ metre
<b>Cyclone</b>	<b>Cyclonic Storm:</b> Wind speed 62-87 kmph (34-47 knots) <b>Severe Cyclonic Storm:</b> Wind speed 88-117 kmph (48-63 knots) <b>Very Severe Cyclonic Storm:</b> Wind speed 118-165 kmph (64 - 89 knots) <b>Extremely Severe Cyclonic Storm:</b> Wind speed 166-220 kmph (90 -119 knots) <b>Super Cyclone Strom:</b> Wind speed $> 220$ kmph ( $> 119$ knots)

\* Red colour warning does not mean "Red Alert", Red colour warning means "Take Action".  
 Forecast and Warning for any day is valid from 0830 hours IST of day till 0830 hours IST of next day.  
 For more details, kindly visit <https://mausam.imd.gov.in> or contact: 011-2434-4599  
 (Service to the Nation since 1875)

**Hot and Humid:** When maximum temperatures remain  $3^\circ\text{C}$  above normal along with the above normal relative humidity.