



Government of India  
Ministry of Earth Sciences  
India Meteorological Department



Press Release

Date: 27<sup>th</sup> May, 2025

Time of Issue: 1330 hours IST

**Subject: i) A Low Pressure area has formed over Northwest Bay of Bengal off Odisha coast. It is likely to move slowly northwards and become more marked during next 48 hours.**

**ii) Heavy to very heavy rainfall likely to continue over west coast (Kerala, Karnataka, coastal Maharashtra & Goa) during next 6-7 days with possibility of extremely heavy rainfall over Kerala during 27<sup>th</sup>-30<sup>th</sup> May and Konkan, ghat areas of Madhya Maharashtra, Coastal and Ghat areas of Karnataka, Ghat areas of Tamil Nadu on 27<sup>th</sup> May, 2025.**

**iii) A fresh Western Disturbance is likely to affect Northwest India from 29<sup>th</sup> May.**

**Advance of Southwest Monsoon: (Annexure I):**

- ✓ The Northern Limit of Monsoon continues to pass through 17.0°N/55°E, 17.5°N/60°E, 18°N/65°E, 18.5°N/70°E, Mumbai, Pune, Sholapur, Kalaburagi, Mahbubnagar, Kavali, 16.5°N/83°E, 19°N/86°E, 21°N/89°E, Agartala, Goalpara and 28.5°N/89°E.
- ✓ Conditions are favourable for further advance of Southwest Monsoon into remaining parts of central Arabian Sea, some more parts of Maharashtra, remaining parts of Karnataka, some more parts of Telangana, Andhra Pradesh, some parts of Chhattisgarh & Odisha, most parts of westcentral & some more parts of North Bay of Bengal and remaining parts Northeastern states and some parts of West Bengal and Sikkim during next 2-3 days.

**Realised weather during past 24 hours till 0830 hours IST of today, the 27<sup>th</sup> May, 2025 (Annexure II):**

- ❖ **Heavy to very heavy rain** at a few places over Konkan & Goa and Coastal Karnataka and at isolated places over Tamil Nadu, Puducherry & Karaikal, North Interior Karnataka and Kerala & Mahe; **Heavy rainfall** at isolated places over Assam & Meghalaya, Tripura, Gangetic West Bengal, Odisha, Jharkhand, Bihar, Uttarakhand, West Madhya Pradesh, Gujarat Region, Madhya Maharashtra, Marathwada, Telangana and South Interior Karnataka.
- ❖ **Extremely heavy rainfall** has been recorded at isolated places over Tamilnadu Puducherry & Karaikal, Konkan & Goa.
- ❖ **Thunderstorm accompanied with Squally/Gusty winds** with speed 40-80 kmph prevailed at isolated places over Himachal Pradesh, Uttar Pradesh, Konkan & Goa, Madhya Maharashtra, Rayalaseema, Tamilnadu Puducherry & Karaikal, Kerala & Mahe, Karnataka, West Madhya Pradesh.

For more details of realised weather, kindly refer [Annexure II](#),

Detailed observations of Maximum Temperature during past 24 hours till 0830 hours IST of today are appended in [Annexure III](#).

**i. Weather Systems, Forecast and Warnings (refer to Annexure IV & V):**

- ❖ A Low Pressure area has formed over Northwest Bay of Bengal off Odisha coast. It is likely to move slowly northwards and become more marked during next 48 hours.
- ❖ A fresh Western Disturbance in middle tropospheric westerlies with its axis at 5.8 km above mean sea level runs roughly along Long. 60°E to north of Lat. 30 °N.
- ❖ An upper air cyclonic circulation lies over central parts of west Madhya Pradesh and another over south Chhattisgarh & adjoining east Vidarbha in lower tropospheric levels.
- ❖ A trough runs from Southeast Rajasthan to North Chhattisgarh in lower tropospheric levels.
- ❖ An upper air cyclonic circulation over west Assam and another over northeast Assam in lower tropospheric levels.
- ❖ **A shear zone runs roughly along the Lat. 17°N over the Indian Region in lower to upper tropospheric levels level tilting southwards with height.**

- ❖ An upper air cyclonic circulation lies over North Konkan & adjoining Eastcentral Arabian Sea in lower tropospheric levels.
- ❖ Under the influence of these systems, the following weather is likely:

#### South peninsular India:

- ✓ **Fairly widespread to widespread** light/moderate rainfall accompanied with **thunderstorm, lightning & gusty winds speed reaching 40-50 kmph with heavy to very heavy rainfall at a few places over Kerala & Mahe, Coastal Karnataka and at isolated places over South Interior Karnataka during 27<sup>th</sup> May-02<sup>nd</sup> June, over North interior Karnataka during 27<sup>th</sup>-30<sup>th</sup> May.**
- ✓ Isolated **extremely heavy rainfall** very likely over Kerala & Mahe during 27<sup>th</sup>-30<sup>th</sup>, Interior Karnataka on 27<sup>th</sup> May.
- ✓ **Scattered to fairly widespread** light/moderate rainfall accompanied with **thunderstorm, lightning & gusty winds speed reaching 40-50 kmph** likely over Coastal Andhra Pradesh & Yanam, Rayalaseema and Telangana during next 5 days. **Isolated heavy rainfall** likely over Coastal Andhra Pradesh & Yanam, Telangana during 27<sup>th</sup> -29<sup>th</sup>, Rayalaseema on 28<sup>th</sup> with very heavy rainfall over Telangana on 28<sup>th</sup> & 29<sup>th</sup> May.
- ✓ **Isolated to scattered** light/moderate rainfall accompanied with **thunderstorm, lightning & gusty winds speed reaching 40-50 kmph with heavy rainfall at a few places with very heavy & extremely rainfall at isolated places very likely** over Tamilnadu Puducherry & Karaikal on 27<sup>th</sup> and **heavy to very heavy rainfall** thereafter during 28<sup>th</sup> May-02<sup>nd</sup> June **Thundersquall wind speed reaching 50-60 kmph gusting to 70 kmph** likely over South Interior Karnataka during 27<sup>th</sup>-30<sup>th</sup>, Coastal Andhra Pradesh & Yanam, Rayalaseema during 27<sup>th</sup>-29<sup>th</sup> May.

#### West India:

- ✓ **Scattered to fairly widespread** light/moderate rainfall accompanied with **thunderstorm, lightning & gusty winds speed reaching 40-50 kmph** over Konkan & Goa, Madhya Maharashtra during 27<sup>th</sup> May-02<sup>nd</sup> June; Gujarat State, Marathawada during 27<sup>th</sup>-29<sup>th</sup> May with **Thundersquall wind speed reaching 50-60 kmph gusting to 70 kmph** likely over Gujarat State on 27<sup>th</sup> May.
- ✓ **Isolated heavy rainfall** likely over Marathawada on 27<sup>th</sup>; Gujarat State during 27<sup>th</sup>-29<sup>th</sup> and isolated **heavy to very heavy rainfall** at some places over Konkan & Goa during 27<sup>th</sup> May-02<sup>nd</sup> June, Madhya Maharashtra during 27<sup>th</sup>-29<sup>th</sup> May.
- ✓ Isolated **extremely heavy rainfall** very likely over Konkan and ghat areas of Madhya Maharashtra on 27<sup>th</sup> May.

#### Northeast India:

- ✓ **Fairly widespread to widespread** light/moderate rainfall accompanied with **thunderstorm, lightning** over Northeast India during next 7 days. **Isolated heavy to very heavy rainfall** likely over Arunachal Pradesh, Assam & Meghalaya, Nagaland, Manipur, Mizoram & Tripura during 27<sup>th</sup> May - 02<sup>nd</sup> June
- ✓ Isolated **extremely heavy rainfall** very likely over Mizoram on 28<sup>th</sup>, Assam & Meghalaya on 29<sup>th</sup> & 30<sup>th</sup> May.

#### East & Central India:

- ✓ **Scattered to fairly widespread** light/moderate rainfall accompanied with **thunderstorm, lightning & gusty winds speed reaching 40-50 kmph** likely over Vidarbha, Chhattisgarh, West Bengal & Sikkim, Jharkhand, Odisha during 27<sup>th</sup>-31<sup>st</sup> May. **Isolated to scattered** light/moderate rainfall accompanied with **thunderstorm, lightning & gusty winds speed reaching 40-50 kmph** likely over Madhya Pradesh, Bihar during 27<sup>th</sup>-31<sup>st</sup> May with **Thundersquall wind speed reaching 50-60 kmph gusting to 70 kmph** likely over West Madhya Pradesh on 27<sup>th</sup>, Odisha during 27<sup>th</sup>-29<sup>th</sup>, Bihar on 29<sup>th</sup> May.
- ✓ **Isolated heavy rainfall** likely over Vidarbha, Andaman & Nicobar Islands on 27<sup>th</sup> & 28<sup>th</sup>, Chhattisgarh during 27<sup>th</sup>-29<sup>th</sup>, Gangetic West Bengal, Odisha during 27<sup>th</sup>-31<sup>st</sup>, Jharkhand during 28<sup>th</sup>-30<sup>th</sup>, Sub-Himalayan West Bengal & Sikkim during 29<sup>th</sup> May-01<sup>st</sup> June with isolated **very heavy rainfall** over Odisha on 27<sup>th</sup> & 29<sup>th</sup>, Gangetic West Bengal during 29<sup>th</sup>-30<sup>th</sup>, Sub-Himalayan West Bengal & Sikkim during 29<sup>th</sup> -31<sup>st</sup> May.
- ✓ Isolated **extremely heavy rainfall** very likely over Sub-Himalayan West Bengal & Sikkim on 30<sup>th</sup> May.

#### Northwest India:

- ✓ **Scattered to fairly widespread** light/moderate rainfall accompanied with **thunderstorm, lightning & gusty winds speed reaching 40-50 kmph** likely over likely over Jammu-Kashmir-Ladakh-Gilgit-Baltistan-Muzaffarabad, Himachal Pradesh, Uttarakhand, Punjab, Haryana Chandigarh & Delhi; isolated to scattered rainfall over Uttar Pradesh, Rajasthan during 27<sup>th</sup> May-02<sup>nd</sup> June with **Thundersquall wind speed reaching 50-60 kmph gusting to 70 kmph** likely over Jammu-Kashmir-Ladakh-Gilgit-Baltistan-Muzaffarabad on 28<sup>th</sup> & 29<sup>th</sup>, Punjab 27<sup>th</sup>, 29<sup>th</sup> & 30<sup>th</sup>, Himachal Pradesh, Haryana Chandigarh & Delhi on 30<sup>th</sup> & 31<sup>st</sup>, West Uttar Pradesh on 31<sup>st</sup>, East Rajasthan on 29<sup>th</sup> & 30<sup>th</sup> May.
- ✓ **Isolated hailstorm** over Himachal Pradesh on 27<sup>th</sup> & 28<sup>th</sup> May.
- ✓ **Isolated heavy rainfall** also likely over Uttarakhand during 28<sup>th</sup> May-02<sup>nd</sup> June; Himachal Pradesh on 31<sup>st</sup> May.

#### Maximum Temperature Forecast:

- ❖ rise by about 2-3°C in maximum temperatures likely over Northwest India during next 2 days and gradual fall by 2-4°C thereafter for subsequent 4-5 days.
- ❖ No significant change in maximum temperatures likely over Central India during next 3 days and gradual rise by 2-3°C thereafter for subsequent 4 days.

- ❖ No significant change in maximum temperatures likely over East India during next 5 days and gradual rise by 2-3°C thereafter for subsequent 2 days.
- ❖ No significant change in maximum temperatures likely over rest parts of the country.

**Heat wave warnings:**

- ❖ **Heat wave conditions** very likely in isolated pockets of West Rajasthan on 27<sup>th</sup> & 28<sup>th</sup>, Jammu on 27<sup>th</sup> May.

**FISHERMEN WARNINGS (Graphics in Annexure VI)**

(A) **Fishermen are advised not to venture** from 27<sup>th</sup>-01<sup>st</sup> June **over** Eastcentral & south Arabian Sea, many parts of westcentral Arabian Sea and along & off Kerala, Karnataka, Konkan & Goa and Lakshadweep, Comorin areas, Gulf of Mannar; along and off Gujarat coast on 30<sup>th</sup> and 31<sup>st</sup> May.

(B) **Fishermen are advised not to venture along & off Tamil Nadu, Andhra Pradesh, Odisha, West Bengal, Bangladesh, Myanmar coasts from 27<sup>th</sup> to 31<sup>st</sup> May; over south, central & northwest Bay of Bengal from 27<sup>th</sup> - 31<sup>st</sup> May; over north Bay of Bengal from 28<sup>th</sup> to 31<sup>st</sup> May; most parts of Bay of Bengal on 31<sup>st</sup> May.**

(C) **Fishermen are advised not to venture into the Andaman Sea from 27<sup>th</sup> to 31<sup>st</sup> May.**

Total suspension of fishing operations over above-mentioned areas and dates.

**iv. Weather conditions and forecast over Delhi/NCR during 27<sup>th</sup> May to 30<sup>th</sup> May, 2025 (Annexure VII)**

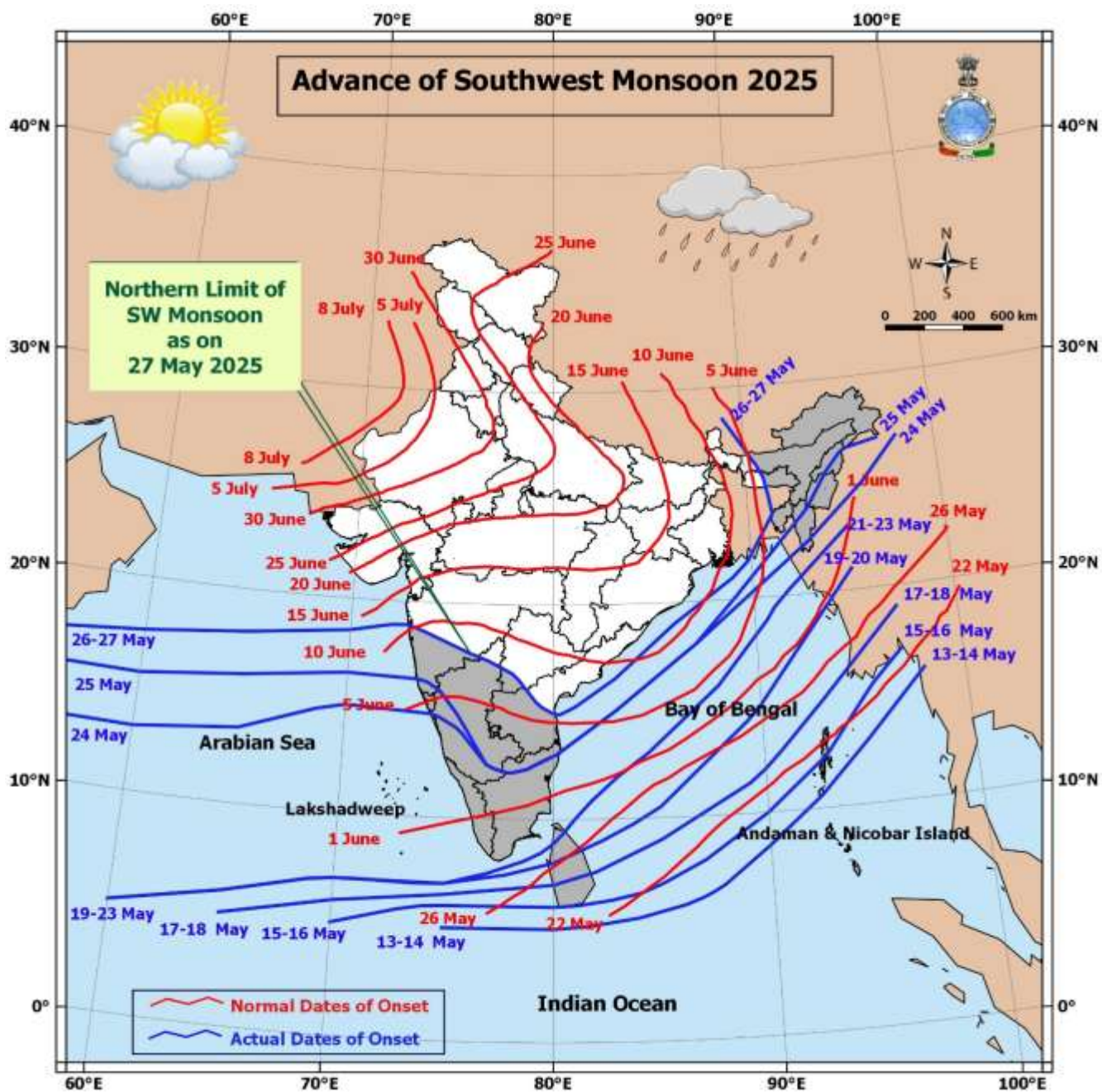
**For more details, kindly refer National Weather Bulletin:**

[https://mausam.imd.gov.in/responsive/all\\_india\\_forecast\\_bulletin.php](https://mausam.imd.gov.in/responsive/all_india_forecast_bulletin.php)

**For District wise warnings refer:** <https://mausam.imd.gov.in/responsive/districtWiseWarningGIS.php>

For Depression Bulletins refer:

[https://rsmcnewdelhi.imd.gov.in/uploads/archive/1/1\\_fba0b7\\_02.National%20Bulletin%20No%2002-24May2025\\_0830IST.pdf](https://rsmcnewdelhi.imd.gov.in/uploads/archive/1/1_fba0b7_02.National%20Bulletin%20No%2002-24May2025_0830IST.pdf)





**Significant weather reported during past 24 hours till 0830 hours IST of today:**

- ❖ **Light/moderate Rainfall with thunderstorm & lightning** observed **at most places** over Andaman & Nicobar Islands, Nagaland, Manipur, Mizoram & Tripura, Sub Himalayan West Bengal & Sikkim, Konkan & Goa, Coastal Karnataka, North Interior Karnataka, South Interior Karnataka, Kerala & Mahe and Lakshadweep; **at many places** over Arunachal Pradesh, Assam & Meghalaya, Gangetic West Bengal, Jharkhand, Madhya Maharashtra and Rayalaseema; **at a few places** over Odisha, Gujarat Region, Marathwada, Vidarbha, Chhattisgarh, Coastal Andhra Pradesh & Yanam, Telangana and Tamil Nadu, Puducherry & Karaikal; **at isolated places** over Bihar, East Uttar Pradesh, West Uttar Pradesh, Uttarakhand, Haryana-Chandigarh-Delhi, Jammu-Kashmir-Ladakh-Gilgit-Baltistan-Muzaffarabad, East Rajasthan, West Madhya Pradesh, East Madhya Pradesh and Saurashtra & Kutch; **Dry** over rest of the country.

**Rainfall recorded (in cm) reported during past 24 hours till 0830 hours IST of today:**

- ❖ **Konkan & Goa:** Mhasla (dist Raigad) 28; Murud (dist Raigad) 25; Panvel ARG (dist Raigad), Dapoli ARG (dist Ratnagiri) 24 Each; Devgad (dist Sindhudurg) 18; Shriwardhan (dist Raigad), Tala (dist Raigad), Rameshwar ARG (dist Sindhudurg) 17 Each; Alibag - IMD Part Time (dist Raigad), Guhagarh (dist Ratnagiri), Colaba (dist Mumbai City), Pen (dist Raigad) 16 Each; Matheran (dist Raigad), Wakwali ARG (dist Ratnagiri) 15 Each;
- ❖ **Tamil Nadu, Puducherry & Karaikal:** Avalanche (dist Nilgiris) 26; Emeralad (dist Nilgiris) 13; Chinnakalar (dist Coimbatore), Upper Bhavani (dist Nilgiris) 12 Each; K Bridge (dist Nilgiris) 11; Periyar (dist Theni), Thekkadi (dist Theni), Worth Estate Cher (dist Nilgiris) 10 Each;
- ❖ **Coastal Karnataka:** Mulki (dist Dakshina Kannada) 19; Mani (dist Dakshina Kannada) 18; Panambur (dist Dakshina Kannada), Uppinangadi (dist Dakshina Kannada) 17 Each; Karkala (dist Udupi) 15; Manki (dist Uttara Kannada) 14; Puttur HMS (dist Dakshina Kannada), Kota (dist Udupi) 13 Each; Mangaluru AP (dist Dakshina Kannada), Belthangadi (dist Dakshina Kannada) 12 Each; Mangaluru (dist Dakshina Kannada) 11; Udupi (dist Udupi), Kundapur (dist Udupi) 9 Each; Siddapura (dist Udupi), Dharmasthala (dist Dakshina Kannada) 8 Each;
- ❖ **Kerala & Mahe:** Tellichery (dist Cannur), Ayyankunnu AWS (dist Cannur) 17 Each; Vyttili (dist Wynad), Peermade To (dist Idukki) 16 Each; Vadakara (dist Kozhikode), Chemberi AWS (dist Cannur), Vellathooval AWS (dist Idukki) 15 Each; Kannur (dist Cannur), Peringome AWS (dist Cannur) 13 Each; Taliparamba (dist Cannur), Irikkur (dist Cannur), Mahe (dist Mahe), Idukki (dist Idukki), Kannur Airport AWS (dist Cannur), Venkurinji AWS (dist Pathanamthitta), Ams Kannur (dist Cannur) 12 Each;
- ❖ **North Interior Karnataka:** Afzalpur HMS (dist Kalaburgi) 16; Shahpur (dist Yadgir), Ganagapura ARG (dist Kalaburgi) 8 Each;
- ❖ **South Interior Karnataka:** Agumbe Emo (dist Shivamogga), Bhagamandala (dist Kodagu) 11 Each; Napoklu (dist Kodagu) 10; Somwarpet (dist Kodagu), Kottigehara (dist Chikkamagaluru) 9 Each; Ponnampet PWD (dist Kodagu), Kalasa (dist Chikkamagaluru) 8 Each
- ❖ **Marathwada:** Washi (dist Dharashiv) 10; Lohara (dist Dharashiv) 8; Umarga (dist Dharashiv) 7;
- ❖ **Madhya Maharashtra:** Vadgaon Maval (dist Pune) 10; Karjat (dist Ahilyanagar) 8; Paud Mulshi (dist Pune), Lonavala ARG (dist Pune), Barshi (dist Sholapur) 7 Each;
- ❖ **Bihar:** Katihar (dist Katihar) 10; Rajgir (dist Nalanda) 9; Kadwa (dist Katihar) 8; Silao (dist Nalanda) 7;
- ❖ **Odisha:** Burla (dist Sambalpur) 9; Nawapara (dist Nawapara), Derabis (dist Kendrapara) 7 Each;
- ❖ **Nagaland, Manipur, Mizoram & Tripura:** Sabroom (dist South Tripura) 9;
- ❖ **Gujarat Region:** Hansot (dist Bharuch) 8;
- ❖ **West Madhya Pradesh:** Bhabhra (dist Alirajpur) 7;
- ❖ **Telangana:** Kosgi (dist Narayanpet) 7;
- ❖ **Gangetic West Bengal:** Dum Dum (dist North 24 Parganas), Canning (dist South 24 Parganas), Panagarh (IAF) (dist Paschim Bardhaman) 7 Each;
- ❖ **Assam & Meghalaya:** Cherrapunji (dist East Khasi Hills) 7.

**Realised Gusty Winds (KMPH) during past 24hours ending at 0300 UTC of today i.e. 27.05.2025;**

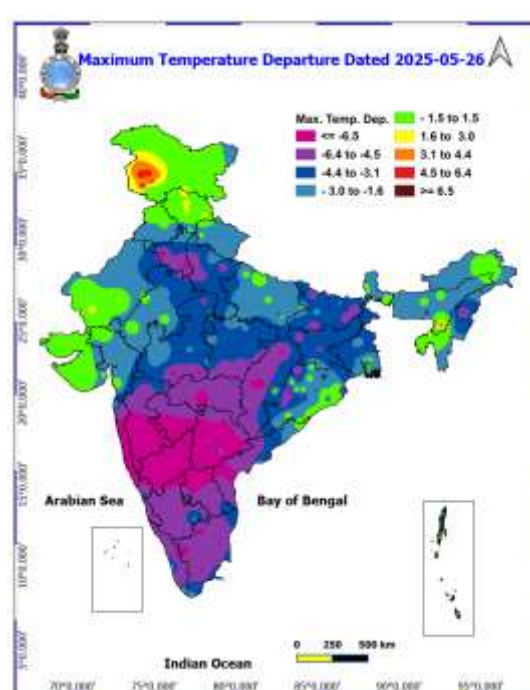
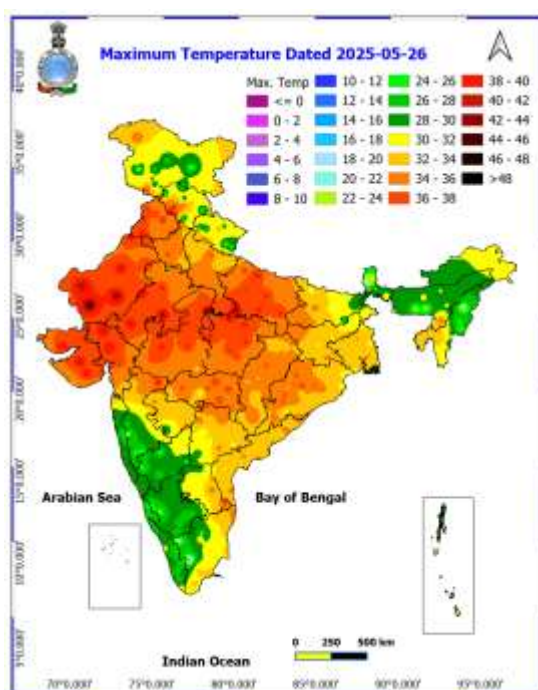
- ❖ Andaman & Nicobar: Sri Vijayapuram (58);
- ❖ Gangetic West Bengal: Amta (44); Diamond Harbour (43); Dum Dum (39); Raidighi (37); Canning (35); Jagatballavpur, Uluberia (33); Burdwan, Agarpara, Purulia (31); Nimpith (30);
- ❖ Odisha: Gunupur (33);
- ❖ Jharkhand: Bokaro, Ramgarh (39); Jamtara (37); Giridih (33); Dhanbad (31); Chatra (30);
- ❖ Bihar: Saraiya (39); Aurangabad, Bikramganj (37); East Champaran, Patna (35); Dumaraon, Muzaffarpur, Manjhi, Sheikhpura (33); Arwal, Pusa (31); Araria, Bhojpur, Sukhet, Rajgir, Supaul (30);
- ❖ Himachal Pradesh: Rekon-Peo-54, Bajaura-37;
- ❖ West Uttar Pradesh: Agra=41;
- ❖ East Uttar Pradesh: Bahraich=52, Chitrakoot=37, Prayagraj=33;
- ❖ West Madhya Pradesh: 59 kmph Ujjain
- ❖ Konkan: Raigad(63kmph), Devgad\_Sindhu(57kmph);
- ❖ Madhya Maharashtra: Nandurbar(70kmph), Nashik(65kmph);
- ❖ Marathwada: Parbhani(37kmph);
- ❖ Tamil Nadu: Natham (68 kmph);

### Temperature observations during past 24 hours till 0830 hours IST today:

- ❖ Yesterday, Maximum Temperatures were in the range of 40-45°C in a few parts of west Rajasthan; in isolated parts of East Rajasthan, East Madhya Pradesh, Gujarat state; in the range 36-40°C in many parts of Punjab, Vidarbha; in a few parts of East Uttar Pradesh, Odisha; in isolated parts of Telangana, Haryana-Chandigarh Delhi and they were less than 36°C elsewhere over remaining parts of the country. Yesterday, the highest maximum temperature of 45.2°C was reported at Barmer (Rajasthan).
- ❖ Yesterday, **Maximum Temperature** were **markedly above normal (> 5.1°C)** at few places over Jammu Kashmir Ladakh-Gilgit-Baltistan-Muzaffarabad. **appreciably above normal (3.1°C to 5.0°C)** at isolated places over Assam & Meghalaya, West Uttar Pradesh, Himachal Pradesh, East Madhya Pradesh, Saurashtra & Kutch and Tamil Nadu, Puducherry & Karaikal. **above normal (1.6°C to 3.0°C)** at few places over Nagaland, Manipur, Mizoram & Tripura and West Rajasthan; at isolated places over Gujarat Region. These were **near normal (- 1.5°C to 1.5°C)** at many places over East Rajasthan; at few places over Andaman & Nicobar Islands, Arunachal Pradesh, Odisha, East Uttar Pradesh and Punjab; at isolated places over Sub Himalayan West Bengal & Sikkim, Gangetic West Bengal, Bihar, Uttarakhand, West Madhya Pradesh, Coastal Andhra Pradesh & Yanam, South Interior Karnataka and Kerala & Mahe (Fig.2).

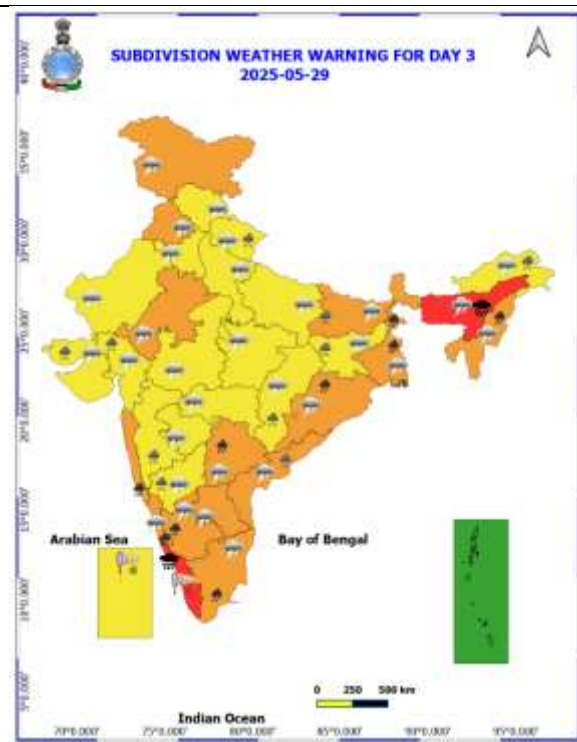
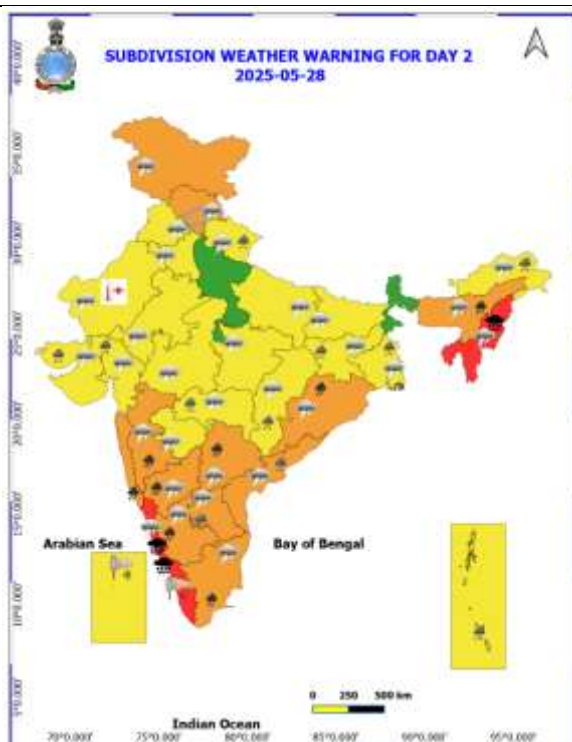
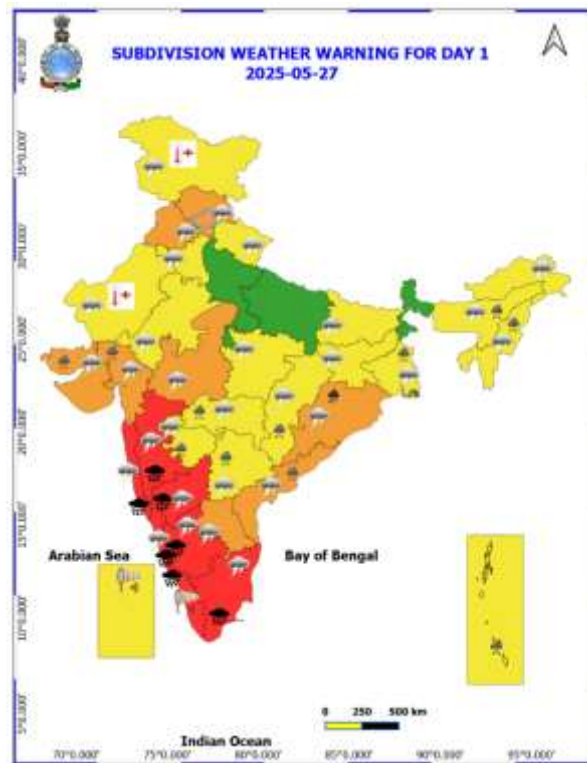
Fig.1: Maximum Temperatures

Fig.2: Departure of Maximum Temperatures

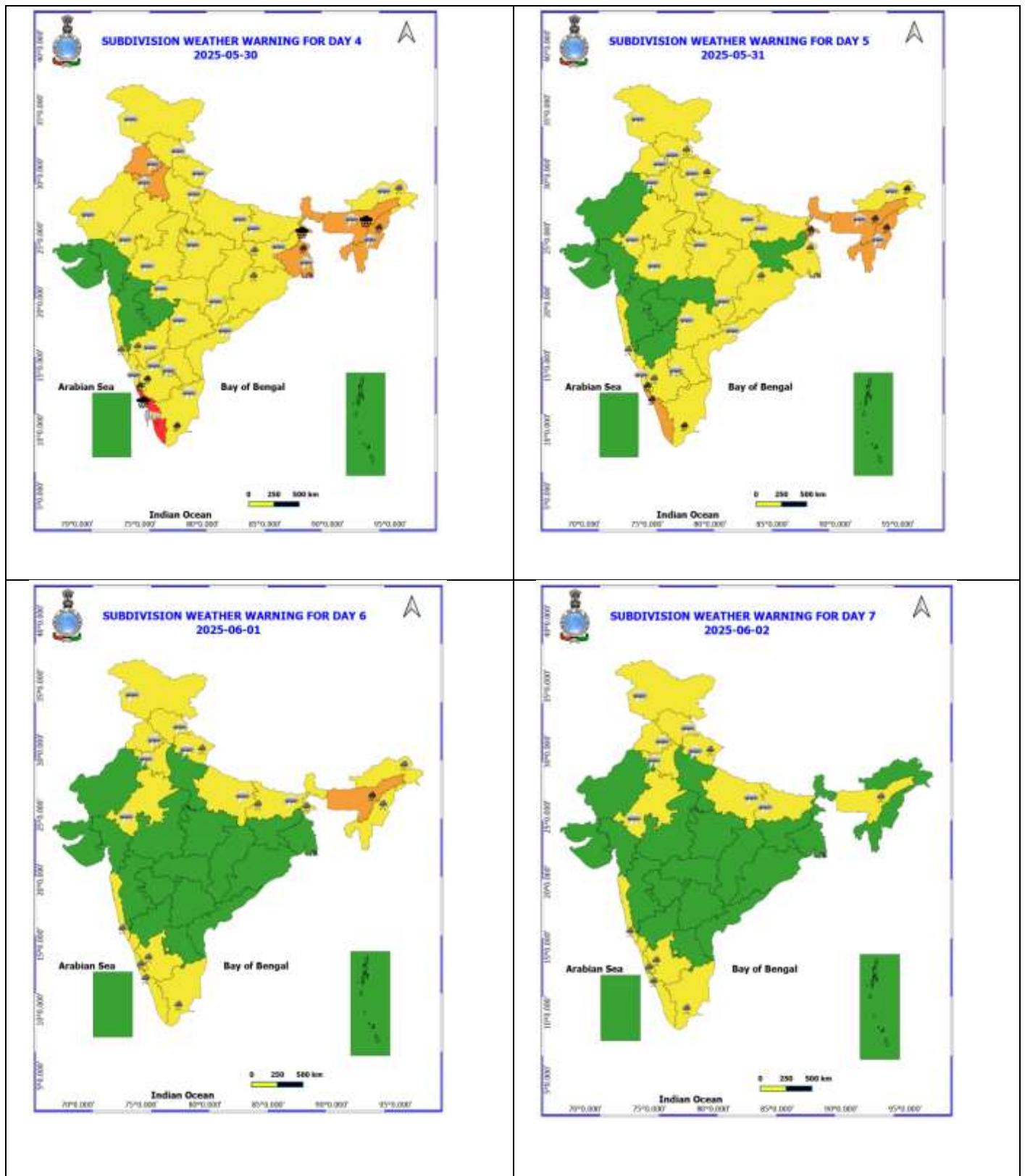


7 Days Rainfall Forecast								
S. No.	Subdivision	27-May	28-May	29-May	30-May	31-May	01-Jun	02-Jun
		Day 1	Day 2	Day 3	Day 4	Day 5	Day 6	Day 7
1	ANDAMAN & NICOBAR ISLANDS	WS	WS	WS	WS	WS	WS	WS
2	ARUNACHAL PRADESH	FWS	FWS	FWS	WS	WS	WS	FWS
3	ASSAM & MEGHALAYA	FWS	FWS	WS	WS	WS	WS	WS
4	NAGALAND, MANIPUR, MIZORAM & TRIPURA	WS	WS	WS	WS	WS	WS	WS
5	SUB-HIMALAYAN WEST BENGAL & SIKKIM	SCT	SCT	FWS	WS	WS	WS	FWS
6	GANGETIC WEST BENGAL	FWS	FWS	WS	WS	WS	SCT	ISOL
7	ODISHA	FWS	WS	WS	FWS	SCT	SCT	ISOL
8	JHARKHAND	SCT	FWS	FWS	FWS	SCT	SCT	ISOL
9	BIHAR	ISOL	ISOL	ISOL	ISOL	SCT	SCT	ISOL
10	EAST UTTAR PRADESH	ISOL	ISOL	ISOL	SCT	SCT	ISOL	ISOL
11	WEST UTTAR PRADESH	DRY	ISOL	ISOL	SCT	ISOL	ISOL	ISOL
12	UTTARAKHAND	SCT	FWS	FWS	FWS	FWS	FWS	FWS
13	HARYANA CHANDIGARH & DELHI	ISOL	SCT	SCT	FWS	SCT	SCT	SCT
14	PUNJAB	SCT	SCT	FWS	FWS	SCT	SCT	SCT
15	HIMACHAL PRADESH	SCT	SCT	SCT	FWS	FWS	FWS	FWS
16	JAMMU & KASHMIR AND LADAKH	SCT	SCT	SCT	SCT	FWS	SCT	SCT
17	WEST RAJASTHAN	ISOL	ISOL	ISOL	ISOL	ISOL	ISOL	ISOL
18	EAST RAJASTHAN	ISOL	ISOL	ISOL	ISOL	ISOL	ISOL	ISOL
19	WEST MADHYA PRADESH	SCT	SCT	SCT	SCT	SCT	ISOL	ISOL
20	EAST MADHYA PRADESH	ISOL	ISOL	SCT	SCT	SCT	ISOL	ISOL
21	GUJARAT REGION	SCT	SCT	SCT	ISOL	ISOL	ISOL	ISOL
22	SAURASHTRA & KUTCH	SCT	SCT	SCT	ISOL	ISOL	ISOL	ISOL
23	KONKAN & GOA	WS	WS	FWS	FWS	FWS	FWS	WS
24	MADHYA MAHARASHTRA	FWS	SCT	SCT	SCT	ISOL	ISOL	ISOL
25	MARATHAWADA	FWS	SCT	ISOL	ISOL	ISOL	ISOL	ISOL
26	VIDARBHA	FWS	WS	FWS	SCT	SCT	SCT	SCT
27	CHHATTISGARH	FWS	WS	FWS	SCT	SCT	SCT	SCT
28	COASTAL ANDHRA PRADESH & YANAM	SCT	SCT	SCT	SCT	SCT	ISOL	ISOL
29	TELANGANA	FWS	FWS	FWS	SCT	SCT	SCT	SCT
30	RAYALASEEMA	FWS	FWS	SCT	SCT	SCT	ISOL	ISOL
31	TAMILNADU PUDUCHERRY & KARAIKAL	ISOL	ISOL	SCT	SCT	ISOL	ISOL	ISOL
32	COASTAL KARNATAKA	WS	WS	WS	WS	WS	WS	WS
33	NORTH INTERIOR KARNATAKA	WS	WS	FWS	FWS	SCT	SCT	SCT
34	SOUTH INTERIOR KARNATAKA	WS	WS	FWS	FWS	SCT	SCT	SCT
35	KERALA & MAHE	WS	WS	WS	WS	WS	FWS	FWS
36	LAKSHADWEEP	WS	WS	WS	WS	WS	FWS	FWS

- As the lead period increases forecast accuracy decreases.





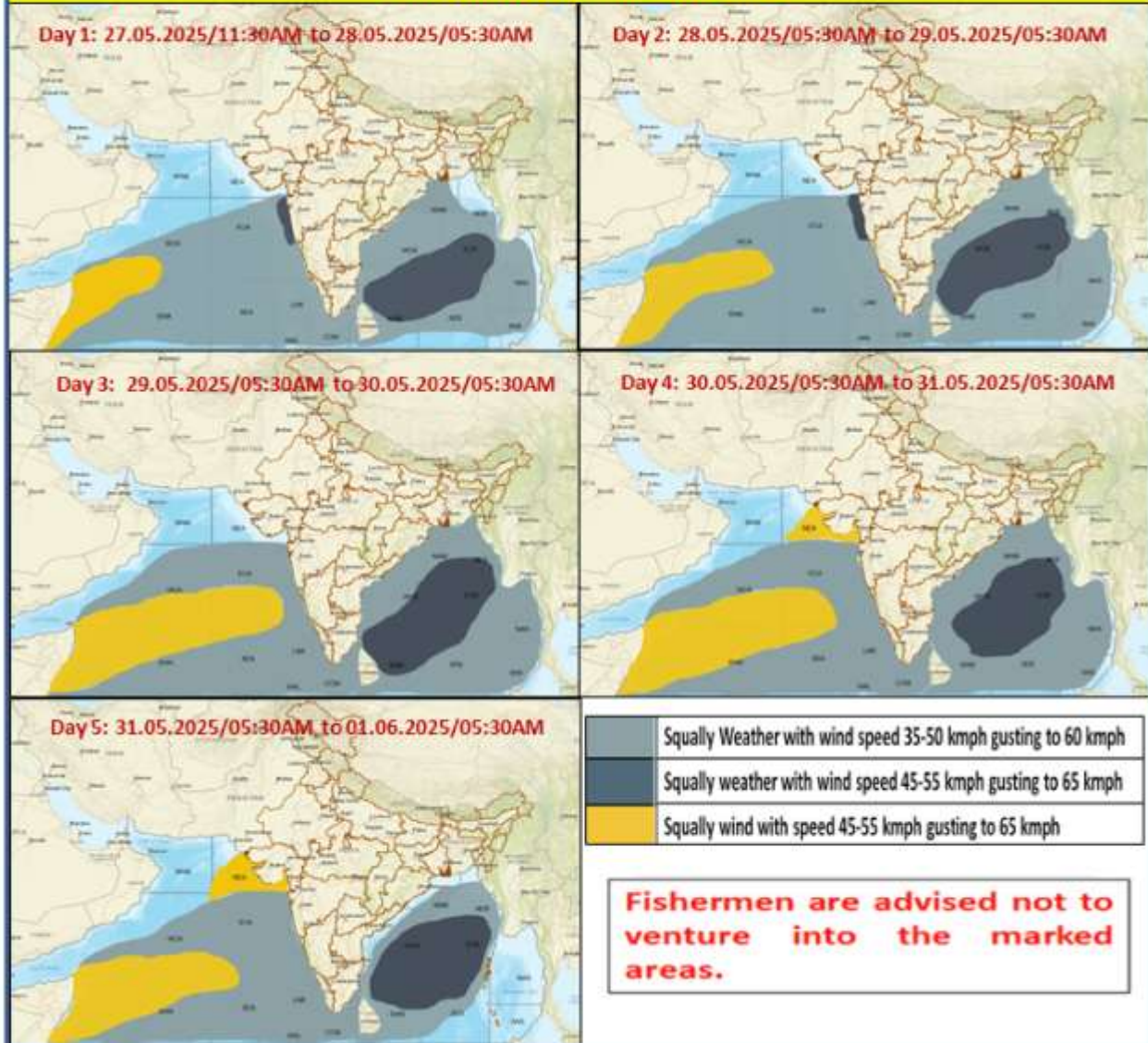


- Action may be taken based on ORANGE AND REDCOLOUR warnings.
- Vulnerable regions likely urban and hilly areas action may be initiated for heavy rainfall warning.
- As the lead period increases forecast accuracy decreases.

Detailed districtwise Multi Hazard weather warning for next five days available at <https://mausam.imd.gov.in/responsive/districtWiseWarningGIS.php>



### Fishermen Warning Graphics



### Flash Flood Guidance

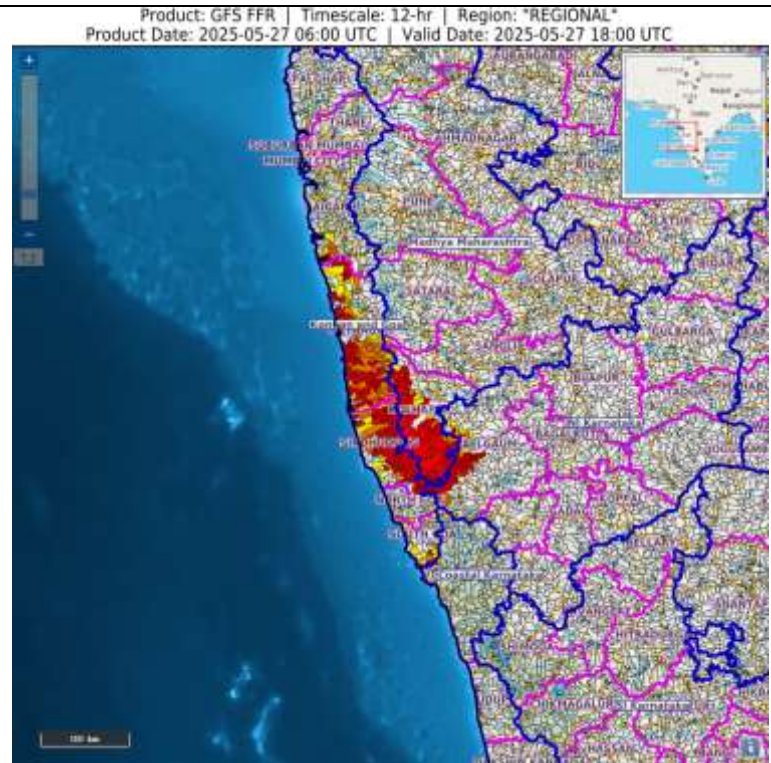
12 hours Outlook for the Flash Flood Risk (FFR) till 2330 IST of 27-05-2025 :

Moderate flash flood risk likely over few watersheds & neighbourhoods of following Met Sub-divisions during next 12 hours.

Konkan & Goa - Raigarh, Ratnagiri and Sindhudurg districts.

Madhya Maharashtra –  
Kohlapur districts.

Surface runoff/ Inundation may occur at some fully saturated soils & low-lying areas over Area of Concern (AoC) as shown in map due to expected rainfall occurrence in next 12 hours.





**Weather forecast over Delhi/NCR during 27<sup>th</sup> to 30<sup>th</sup> May 2025****Past Weather:**

There has been slight rise in minimum temperature and rise in maximum temperature up to 3°C over Delhi/NCR during the past 24 hours. The maximum and minimum temperatures over Delhi are in the range of 34 to 35°C and 24 to 26°C respectively. The minimum temperature was below normal up to 1 - 3°C and the maximum temperature was below normal up to 5 - 7°C over Delhi/NCR. Partly cloudy sky conditions with predominant surface wind from the east-south-east direction with wind speeds less than 16 kmph prevailed during the past 24 hours. Mainly clear sky conditions with wind speed less than 14 kmph from the southeast direction prevailed over the region in the forenoon today.

**Weather Forecast:**

**27.05.2025:** Mainly clear sky becoming partly cloudy sky. Possibility of thundery development. The maximum temperatures over Delhi are likely to be in the range of 37 to 39°C. The maximum temperature will be below normal up to 1 - 2°C. The predominant surface wind will likely be from the southeast direction with a wind speed of less than 10 kmph till evening. It would increase becoming less than 15 kmph from the southeast direction during the night.

**28.05.2025:** Partly cloudy sky. Possibility of thundery development. The maximum and minimum temperatures over Delhi are likely to be in the range of 38 to 40°C and 26 to 28°C respectively. The minimum temperature will be near normal and the maximum temperature will be near normal. The predominant surface wind will likely be from the southwest direction with a wind speed of 10-15 kmph during morning hours. The wind speed will gradually decrease becoming 08-12 kmph from the southwest direction in the afternoon. It will increase becoming less than 15 kmph from the southwest direction during evening and night.

**29.05.2025:** Partly cloudy sky. Very light rain to light rain accompanied with thunderstorm/lightning and gusty winds (speed 30 - 50 kmph) temporarily reaching to 60 kmph during thunderstorm. The maximum and minimum temperatures over Delhi are likely to be in the range of 38 to 40°C and 26 to 28°C respectively. The minimum temperature will be near normal and the maximum temperature will be near normal. The predominant surface wind will likely be from the northwest direction with a wind speed of less than 10 kmph during the morning hours. The wind speed will gradually increase becoming 10-15 kmph from the northwest direction in the afternoon. It will increase becoming less than 25 kmph from the west direction during evening and night.

**30.05.2025:** Partly cloudy sky. Very light rain to light rain accompanied with thunderstorm/lightning and gusty winds (speed 30 - 50 kmph) temporarily reaching to 60 kmph during thunderstorm. The maximum and minimum temperatures over Delhi are likely to be in the range of 35 to 37°C and 24 to 26°C respectively. The minimum temperature will be below normal up to 1 - 2°C and the maximum temperature will be below normal up to 3 - 5°C. The predominant surface wind will likely be from the east direction with a wind speed of less than 10 kmph during the morning hours. The wind speed will gradually increase becoming 10-15 kmph from the south direction in the afternoon. It will increase becoming less than 25 kmph from the southwest direction during evening and night.

**Impact expected and Action Suggested due to thunderstorm with lightning/gusty winds:**

- Be cautious and take precautionary measures, though there is the likelihood of thunderstorm/lightning and gusty winds (speed 30 - 50 kmph) temporarily reaching to 60 kmph during thunderstorm with dust rising surface winds.
- Breaking of tree branches, uprooting of large avenue trees, Large dead limbs blown from trees, Damage to standing crops, Minor to major damage to power and communication lines due to breaking of branches, Partial damage to vulnerable structures due to strong winds, Loose objects may fly.
- People are advised to keep a watch on the weather for worsening conditions and be ready to move to safer places accordingly, stay indoors, close windows & doors and avoid travel if possible, take safe shelters; do not take shelter under trees, do not lie on concrete floors and do not lean against concrete walls, unplug electrical/ electronic appliances, immediately get out of water bodies, keep away from all the objects that conduct electricity.



### **Impact & Action Suggested due to Extremely and heavy to very heavy rainfall over (For Red & Orange colour warning areas of Peninsular India & Maharashtra)**

- ✓ **Extremely heavy rainfall** at isolated places over Kerala & Mahe during 27<sup>th</sup>-30<sup>th</sup>, Interior Karnataka and Tamilnadu Puducherry & Karaikal on 27<sup>th</sup> May; Meghalaya on 29<sup>th</sup> & 30<sup>th</sup> and Mizoram on 28<sup>th</sup> May.
- ✓ **Very heavy rainfall** very likely Tamilnadu Puducherry & Karaikal, Kerala & Mahe, Karnataka during 28<sup>th</sup> -31<sup>st</sup> May; Karnataka, Konkan & Goa on 28<sup>th</sup> & 29<sup>th</sup> and Madhya Maharashtra on 28<sup>th</sup>; Assam & Meghalaya on 28<sup>th</sup> & 31<sup>st</sup> and Nagaland, Manipur, Mizoram & Tripura during 29<sup>th</sup>-31<sup>st</sup> May.

#### **Impact Expected**

- ❖ Localized Flooding of roads, water logging in low lying areas and closure of underpasses mainly in urban areas of the above region.
- ❖ Occasional reduction in visibility due to heavy rainfall.
- ❖ Disruption of traffic in major cities due to water logging in roads leading to increased travel time.
- ❖ Minor damage to kutcha roads.
- ❖ Possibilities of damage to vulnerable structure.
- ❖ Localized Landslides/Mudslides
- ❖ Damage to horticulture and standing crops in some areas due to inundation.
- ❖ It may lead to riverine flooding in some river catchments (for riverine flooding please visit Web page of CWC).

#### **Action Suggested**

- ❖ Check for traffic congestion on your route before leaving for your destination.
- ❖ Follow any traffic advisories that are issued in this regard.
- ❖ Avoid going to areas that face the water logging problems often.
- ❖ Avoid staying in vulnerable structure.

### **Impact expected and action suggested due to isolated thunderstorm with lightning/gusty & Squally winds & Hailstorm over**

- ✓ **Thundersquall wind speed reaching 50-60 kmph gusting to 70 kmph** over likely over Gujarat State, West Madhya Pradesh on 27<sup>th</sup>, South Interior Karnataka during 27<sup>th</sup>-30<sup>th</sup>, Coastal Andhra Pradesh & Yanam, Rayalaseema during 27<sup>th</sup>-29<sup>th</sup> May, on 27<sup>th</sup>, Odisha during 27<sup>th</sup>-29<sup>th</sup>, Bihar on 29<sup>th</sup> May. Jammu-Kashmir-Ladakh-Gilgit-Baltistan-Muzaffarabad on 28<sup>th</sup> & 29<sup>th</sup>, Punjab 27<sup>th</sup>, 29<sup>th</sup> & 30<sup>th</sup>, Himachal Pradesh, Haryana Chandigarh & Delhi on 30<sup>th</sup> & 31<sup>st</sup>, West Uttar Pradesh on 31<sup>st</sup>, East Rajasthan on 29<sup>th</sup> & 30<sup>th</sup> May.
- ✓ **Isolated hailstorm** over Himachal Pradesh on 27<sup>th</sup> & 28<sup>th</sup> May.

#### **Impact expected:**

- Breaking of tree branches, uprooting of large avenue trees. Large dead limbs blown from trees. Damage to Standing crops.
- Minor to Major damage to banana and papaya trees.
- Minor to major damage to power and communication lines due to breaking of branches.
- Strong wind/hail may damage plantation, horticulture and standing crops.
- Hail may injure people and cattle at open places.
- Partial damage to vulnerable structures due to strong winds.
- Minor damage to kutcha houses/walls and huts.
- Loose objects may fly.

#### **Action suggested:**

- People are advised to keep a watch on the weather for worsening conditions and be ready to move to safer places accordingly.
- Stay indoors, close windows & doors and avoid travel if possible.
- Take safe shelters; do not take shelter under trees.
- Do not lie on concrete floors and do not lean against concrete walls.
- Unplug electrical/ electronic appliances.
- Immediately get out of water bodies.
- Keep away from all the objects that conduct electricity.

### **Impact expected and action suggested due to Heat wave conditions** in isolated pockets of West Rajasthan on 27<sup>th</sup> & 28<sup>th</sup>, Jammu on 27<sup>th</sup> May.

#### **Yellow alert Areas**

- Moderate temperature & heat is tolerable for general public but moderate health concern likely for vulnerable people e.g. infants, elderly, people with chronic diseases.
- Avoid heat exposure.
- Wear lightweight, light colour, loose, cotton clothes.
- Cover your head, use a cloth, hat or umbrella.

#### **Agromet advisories for likely impact of Heavy Rainfall / Hailstorms / Gusty Winds / Heat Wave**

- In **North Eastern States, Andaman & Nicobar Islands, Gangetic West Bengal, Odisha, Uttarakhand, West Madhya Pradesh, Chhattisgarh, Maharashtra, Gujarat, Tamil Nadu, Kerala, Karnataka, Coastal Andhra Pradesh and Telangana**, drain out excess water and ensure proper drainage in fields with standing crops and vegetables.
- In **Himachal Pradesh**, use hail nets and hail caps to prevent mechanical damage in vegetables and orchards due to the possibility of hailstorms.
- Shift the harvested produce in safer places or cover the produce with tarpaulin sheets in the fields. Tie the harvested crops properly and cover them to minimise the risk of displacement due to strong surface winds.
- Provide mechanical support to horticultural crops and staking to vegetables to avoid lodging.
- In **West Rajasthan**, apply light and frequent irrigation in the evening to protect standing crops, vegetables and orchards from the adverse effects of heat waves and high temperatures.

#### **Livestock / Poultry / Fishery**

- Keep the animals inside the shed during heavy rainfall / hailstorm and provide them balanced feed.
- Store feed and fodder in a safe place to prevent spoilage.
- Construct an outlet with proper netting around the ponds to drain out excess water, thereby preventing fish from escaping in case of overflow.
- To reduce the effect of heat wave/high temperature, cover the roof of poultry sheds with grass. Also, provide clean, hygienic and plenty of drinking water to animals.

## Legends & abbreviations:

- ❖ **Heavy Rain:**64.5-115.5mm; **Very Heavy Rain:**115.6-204.4mm; **Extremely Heavy Rain:** >204.4mm.
- ❖ **Obsy:** Observatory; **AWS:** Automatic Weather Station; **ARG:** Automatic Rain Gauge; **dist:** District; **NH:** National Highway; **KVK:** Krishi Vigyan Kendra; **DVC:** Damodar Valley Corporation; **PTO:** Part Time Office, **Aero:** Aerodrome, **IAF:** Indian Air Force.
- ❖ **Region wise classification of meteorological Sub-Divisions:**
  - **Northwest India:** Western Himalayan Region (Jammu-Kashmir-Ladakh-Gilgit-Baltistan-Muzaffarabad, Himachal Pradesh and Uttarakhand); Punjab, Haryana-Chandigarh-Delhi; West Uttar Pradesh, East Uttar Pradesh, West Rajasthan and East Rajasthan.
  - **Central India:** West Madhya Pradesh, East Madhya Pradesh, Vidarbha and Chhattisgarh.
  - **East India:** Bihar, Jharkhand, Sub-Himalayan West Bengal & Sikkim; Gangetic West Bengal, Odisha and Andaman & Nicobar Islands.
  - **Northeast India:** Arunachal Pradesh, Assam & Meghalaya and Nagaland, Manipur, Mizoram & Tripura.
  - **West India:** Gujarat Region, Saurashtra & Kutch, Konkan & Goa, Madhya Maharashtra and Marathawada.
  - **South India:** Coastal Andhra Pradesh & Yanam, Telangana, Rayalaseema, Coastal Karnataka, North Interior Karnataka, South Interior Karnataka, Kerala & Mahe, Tamil Nadu, Puducherry & Karaikal and Lakshadweep.

## LEGENDS

1. अंडमान और निकोबार द्वीपसमूह

2. अरुणाचल प्रदेश

3. असम और मेघालय

4. नागालैंड, मणिपुर, मिजोरम और त्रिपुरा

5. उप-हिमालयी पश्चिम बंगाल और सिक्किम

6. गंगीय पश्चिम बंगाल

7. ओडिशा

8. झारखंड

9. बिहार

10. पूर्वी उत्तर प्रदेश

11. पश्चिम उत्तर प्रदेश

12. उत्तराखंड

13. हरियाणा, चंडीगढ़ और दिल्ली

14. पंजाब

15. हिमाचल प्रदेश

16. जम्मू और कश्मीर और लद्दाख

17. पश्चिम राजस्थान

18. पूर्वी राजस्थान

19. पश्चिम मध्य प्रदेश

20. पूर्वी मध्य प्रदेश

21. गुजरात

22. सौराष्ट्र

23. कोंकण और गोवा

24. मध्य महाराष्ट्र

25. मराठवाड़ा

26. विदर्भ

27. छत्तीसगढ़

28. तटीय आंध्र प्रदेश और यनम

29. तेलंगाना

30. रायलसीमा

31. तमिलनाडु, पुडुचेरी और कराईकल

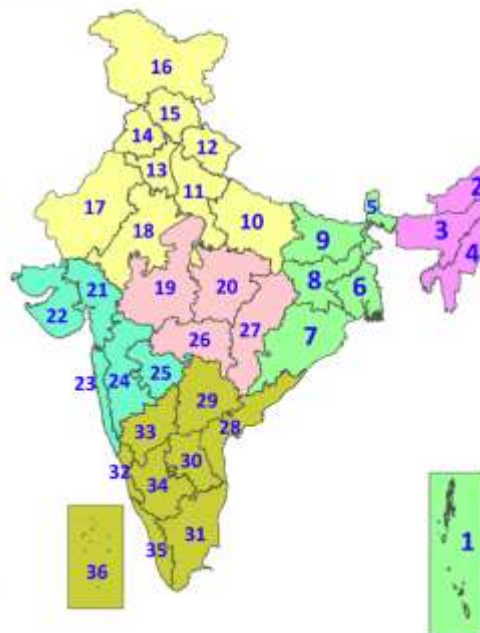
32. तटीय कर्नाटक

33. आंतरिक उत्तरी कर्नाटक

34. आंतरिक दक्षिणी कर्नाटक

35. केरल और माहे

36. लक्षद्वीप



1. Andaman & Nicobar Islands

2. Arunachal Pradesh

3. Assam & Meghalaya

4. Nagaland, Manipur, Mizoram & Tripura

5. Sub-Himalayan West Bengal & Sikkim

6. Gangetic West Bengal

7. Odisha

8. Jharkhand

9. Bihar

10. East Uttar Pradesh

11. West Uttar Pradesh

12. Uttarakhand

13. Haryana, Chandigarh & Delhi

14. Punjab

15. Himachal Pradesh

16. Jammu & Kashmir and Ladakh

17. West Rajasthan

18. East Rajasthan

19. West Madhya Pradesh

20. East Madhya Pradesh

21. Gujarat

22. Saurashtra

23. Konkan & Goa

24. Madhya Maharashtra

25. Marathwada

26. Vidarbha

27. Chhattisgarh

28. Coastal Andhra Pradesh & Yanam

29. Telangana

30. Rayalaseema

31. Tamilnadu, Puducherry & Karaikal

32. Coastal Karnataka

33. North Interior Karnataka

34. South Interior Karnataka

35. Kerala & Mahe

36. Lakshadweep

## SPATIAL DISTRIBUTION (% of Stations reporting)

% Stations	Category	% Stations	Category
76-100	Widespread (WS/Most Places)	26-50	Scattered (SCT/A Few Places)
51-75	Fairly Widespread (FWS/Many Places)	1-25	Isolated (ISOL)



Fog



Heavy Snow



Cold Wave



Heavy Rain



Dust Storm



Cold Day



Very Heavy Rain



Heat Wave



Ground Frost



Extremely Heavy Rain



Warm Night



Thunder & Lightning



Hot Day



Hailstorm



Hot & Humid



Dust Raising Winds



Strong Surface Winds

## COLOUR CODED WARNING

No Warning (No Action)

Watch (Be Aware)

Alert (Be Prepared To Take Action)

Warning (Take Action)

## Probabilistic Forecast

Terms	Probability of Occurrence (%)
Unlikely	< 25
Likely	25 - 50
Very Likely	50 - 75
Most Likely	> 75

\* Red colour warning does not mean "Red Alert", Red colour warning means "Take Action".

Forecast and Warning for any day is valid from 0830 hours IST of day till 0830 hours IST of next day.

For more details, kindly visit <https://mausam.imd.gov.in> or contact: 011-2434-4599

(Service to the Nation since 1875)



## DEFINITION/CRITERIA

### Rain/ Snow \*

Heavy: 64.5 to 115.5 mm/cm \*  
Very Heavy: 115.6 to 204.4 mm/cm \*  
Extremely Heavy: > 204.4 mm/cm \*

### Heat Wave

When maximum temperature of a station reaches  $\geq 40^{\circ}\text{C}$  for plains and  $\geq 30^{\circ}\text{C}$  for hilly regions  
(a) Based on Departure from normal

Heat Wave: Maximum Temperature Departure from normal  $4.5^{\circ}\text{C}$  to  $6.4^{\circ}\text{C}$ .

Severe Heat Wave: Maximum Temperature Departure from normal  $\geq 6.5^{\circ}\text{C}$

(b). Based on Actual maximum temperature

Heat Wave: When actual maximum temperature  $\geq 45^{\circ}\text{C}$ .

Severe Heat Wave: When actual maximum temperature  $\geq 47^{\circ}\text{C}$ .

(c). Criteria for heat wave for coastal stations

When maximum temperature departure is  $> 4.5^{\circ}\text{C}$  from normal. Heat Wave may be described provided maximum temperature  $\geq 37^{\circ}\text{C}$ .

### Warm Night

When maximum temperature remains  $40^{\circ}\text{C}$

Warm Night: When minimum temperature departure  $4.5^{\circ}\text{C}$  to  $6.4^{\circ}\text{C}$ .

Severe Warm Night: When minimum temperature departure  $> 6.4^{\circ}\text{C}$ .

### Cold Wave

When minimum temperature of a station  $\leq 10^{\circ}\text{C}$  for plains and  $\leq 0^{\circ}\text{C}$  for hilly regions.

(a). Based on departure

Cold Wave: Minimum Temperature Departure from normal  $-4.5^{\circ}\text{C}$  to  $-6.4^{\circ}\text{C}$ .

Severe Cold Wave: Minimum Temperature Departure from normal  $\leq -6.5^{\circ}\text{C}$

(b) Based on actual Minimum Temperature (for Plains only)

Cold Wave: When Minimum Temperature is  $\leq 4.0^{\circ}\text{C}$

Severe Cold Wave: When Minimum Temperature is  $\leq 2.0^{\circ}\text{C}$

(c) For Coastal Stations

When Minimum Temperature departure is  $\leq -4.5^{\circ}\text{C}$  & actual Minimum Temperature is  $\leq 15^{\circ}\text{C}$

### Cold Day

When minimum temperature of a station  $\leq 10^{\circ}\text{C}$  for plains and  $\leq 0^{\circ}\text{C}$  for hilly regions

Based on departure

Cold Day: Maximum Temperature Departure from normal  $-4.5^{\circ}\text{C}$  to  $-6.4^{\circ}\text{C}$ .

Severe Cold Day: Maximum Temperature Departure from normal  $\leq -6.5^{\circ}\text{C}$

### Fog

Phenomenon of small droplets suspended in air and the horizontal visibility  $< 1\text{km}$

Moderate Fog: When the visibility between 500-200 metres

Dense Fog: when the visibility between 50- 200 metres

Very Dense Fog: when the visibility  $< 50$  metres

### Thunderstorm

Sudden electrical discharges manifested by a flash of light (Lightning) and a sharp rumbling sound (thunder)

### Dust/Sand Storm

An ensemble of particles of dust or sand energetically lifted to great heights by a strong and turbulent wind.

### Frost

Ice deposits on ground

Air temperature  $\leq 4^{\circ}\text{C}$  ( over Plains)

### Squall

A strong wind that rises suddenly, lasts for atleast 1 minute.

Moderate: Wind speed 52-61 kmph

Severe: Wind speed 62-67 kmph

Very Severe: Wind speed  $> 67$  kmph

### Sea State

Effect of various waves in the sea over specific area

Rough to very rough: Wind speed 41-62 kmph (22-33 knots) & Wave height 2.5-6 metre

High to very high: Wind speed 63-117 kmph ( 34-63 knots) & Wave height 6-14 metre

Phenomenal: Wind speed  $> 117$  kmph ( $> 63$  knots) & Wave height  $> 14$  metre

### Cyclone

Cyclonic Storm: Wind speed 62-87 kmph (34-47 knots)

Severe Cyclonic Storm: Wind speed 88-117 kmph (48-63 knots)

Very Severe Cyclonic Storm: Wind speed 118-165 kmph (64 - 89 knots)

Extremely Severe Cyclonic Storm: Wind speed 166-220 kmph (90 -119 knots)

Super Cyclone Storm: Wind speed  $> 220$  kmph ( $> 119$  knots)

\* Red colour warning does not mean "Red Alert", Red colour warning means "Take Action".

Forecast and Warning for any day is valid from 0830 hours IST of day till 0830 hours IST of next day.

For more details, kindly visit <https://mausam.imd.gov.in> or contact: 011-2434-4599

(Service to the Nation since 1875)

**Hot and Humid:** When maximum temperatures remain  $3^{\circ}\text{C}$  above normal along with the above normal relative humidity.