



**Government of India
Ministry of Earth Sciences
India Meteorological Department**



Press Release

Date: 29th May, 2025

Time of Issue: 1330 hours IST

Subject: i) A Deep Depression area over Northwest Bay of Bengal likely to cross West Bengal – Bangladesh coasts between Sagar Island and Khepupara (Bangladesh) by afternoon of today, the 29th May, 2025. Under its influence, very heavy to extremely heavy rainfall likely over Northeastern states and Sub-Himalayan West Bengal & Sikkim till 31st May. Isolated exceptionally heavy rainfall (>30cm) also likely over Meghalaya on 29th & 30th May.

ii) Very heavy to extremely heavy rainfall likely to continue over Goa, Karnataka, Kerala and ghat areas of Tamil Nadu on 29th & 30th May 2025 and reduce thereafter.

iii) In association with Western Disturbances, rainfall along with thunderstorm & gusty wind likely over northwest India till next 4-5 days.

Advance of Southwest Monsoon: (Annexure I):

- ❖ **Southwest Monsoon** has further advanced into some more parts of Chhattisgarh & Odisha, some more parts of North Bay of Bengal, remaining parts of Northeastern states and some parts of Sub-Himalayan West Bengal and entire Sikkim today, the 29th May 2025.
- ❖ The Northern Limit of Monsoon continues to pass through 17.0°N/55°E, 17.5°N/60°E, 18°N/65°E, 18.5°N/70°E, Mumbai, Ahilyanagar, Adilabad, Bhawanipatna, Puri, Sandhead Island, 23.5°N/89.5°E, Balurghat, 30°N/85°E.
- ❖ Conditions are favourable for further advance of southwest monsoon over some more parts of West Bengal and Bihar during next 1-2 days.

Realised weather during past 24 hours till 0830 hours IST of today, the 29th May, 2025 (Annexure II):

- ❖ **Heavy to very heavy rainfall** at isolated places over Konkan & Goa, Tamilnadu Puducherry & Karaikal, Kerala & Mahe, Coastal & South Interior Karnataka; **Heavy rainfall** at isolated places over Assam & Meghalaya, Nagaland, Manipur, Mizoram & Tripura, Sub-Himalayan West Bengal & Sikkim, Odisha, Madhya Maharashtra, Marathawada, Telangana, East Madhya Pradesh, Vidarbha.
- ❖ **Thunderstorm accompanied with Squally/Gusty winds** with speed 40-80 kmph prevailed at isolated places over Tamil Nadu, Assam & Meghalaya, East Uttar Pradesh, Himachal Pradesh, Andaman & Nicobar Islands, Uttarakhand, Gangetic West Bengal, Haryana, West Uttar Pradesh, Madhya Maharashtra, Konkan & Goa, Mizoram, Odisha, Jharkhand, Sub-Himalayan West Bengal & Sikkim, Punjab.
- ❖ **Hailstorm** observed at isolated places over Himachal Pradesh.
- ❖ **Dust Storm** observed at isolated places over West Rajasthan.

For more details of realised weather, kindly refer [Annexure II](#),

Detailed observations of Maximum Temperature during past 24 hours till 0830 hours IST of today are appended in [Annexure III](#).

i. Weather Systems, Forecast and Warnings (refer to [Annexure IV & V](#)):

- ❖ The well marked low pressure area over Northwest Bay of Bengal off Odisha coast intensified into a **Depression** and lay over Northwest Bay of Bengal off West Bengal-Bangladesh at 0530 hrs IST of today and further intensified into a **Deep Depression** and lay centred at 0830 hours IST of today, the 29th May 2025 over the same region near latitude 21.3° N and longitude 88.5° E, about 60 km southeast of Sagar Island, 110 km east-southeast of Digha, 160 km east of Balasore, 180 km south-southwest of Mongla (Bangladesh) and 180 km west of Khepupara (Bangladesh). It is likely to continue to move nearly northwards and cross West Bengal – Bangladesh coasts between Sagar Island and Khepupara (Bangladesh) by afternoon of today, the 29th May, 2025.

- ❖ The **Western Disturbance** is seen as an upper air cyclonic circulation over Jammu-Kashmir in lower tropospheric levels with a trough aloft in middle troposphere roughly along Long. 75°E to the north of Lat. 32°N.
- ❖ Another **Western Disturbance** as a cyclonic circulation over North Afghanistan & neighbourhood in lower & middle tropospheric levels.
- ❖ An **upper air cyclonic circulation** lies over south Punjab & neighbourhood in lower tropospheric levels.
- ❖ An **upper air cyclonic circulation** lies over west Rajasthan and another over northern parts of central Uttar Pradesh in lower tropospheric levels.
- ❖ A **trough** runs from southeast Rajasthan to centre of Deep Depression over Northwest Bay of Bengal in lower tropospheric levels.
- ❖ Under the influence of these systems, the following weather is likely:

South Peninsular India:

- ✓ **Fairly widespread to widespread** light/moderate rainfall accompanied with **thunderstorm, lightning & gusty winds speed reaching 40-50 kmph over Kerala & Mahe, Karnataka during 29th May-01st June; Isolated to scattered** light/moderate rainfall accompanied with **thunderstorm, lightning & gusty winds speed reaching 40-50 kmph** likely over **Tamilnadu Puducherry & Karaikal**, Coastal Andhra Pradesh & Yanam, Rayalaseema and Telangana during 29th-31st May.
- ✓ **Isolated heavy rainfall** likely over Telangana, North Interior Karnataka on 29th, Coastal Karnataka on 31st May & 01st June, South Interior Karnataka on 30th, Kerala & Mahe on 01st & 02nd June and isolated **heavy to very heavy rainfall** over Tamilnadu Puducherry & Karaikal, Coastal Karnataka on 30th, Kerala & Mahe on 31st May.
- ✓ Isolated **extremely heavy rainfall** very likely over Kerala & Mahe on 29th & 30th, Tamilnadu Puducherry & Karaikal, Coastal Karnataka, South Interior Karnataka on 29th May.

Northeast India:

- ✓ **Fairly widespread to widespread** light/moderate rainfall over Northeast India during next 7 days.
- ✓ Isolated heavy to very heavy rainfall very likely over Sub-Himalayan West Bengal & Sikkim during 29th May- 01st June, Assam & Meghalaya, Arunachal Pradesh, Nagaland, Manipur, Mizoram & Tripura during next 7 days with **isolated extremely heavy rainfall** also likely over Assam & Meghalaya, Nagaland, Manipur, Mizoram & Tripura on 29th & 30th, Arunachal Pradesh on 30th May.
- ✓ **Isolated exceptionally heavy rainfall (>30cm)** also likely over Meghalaya on 29th & 30th May.

West India:

- ✓ **Scattered to fairly widespread** light/moderate rainfall accompanied with **thunderstorm, lightning over Konkan & Goa**, Madhya Maharashtra, Gujarat State, Marathwada on 29th May.
- ✓ **Isolated heavy rainfall** likely over Madhya Maharashtra on 29th, Konkan & Goa on 01st & 02nd June and isolated **heavy to very heavy rainfall** over Konkan & Goa 29th May.

East & Central India:

- ✓ **Scattered to fairly widespread** light/moderate rainfall accompanied with **thunderstorm, lightning & gusty winds speed reaching 40-50 kmph** likely over Vidarbha, Chhattisgarh, Gangetic West Bengal, Jharkhand, Odisha, Madhya Pradesh, Bihar during 29th May- 01st June with **Thundersquall wind speed reaching 50-60 kmph gusting to 70 kmph** likely over West Madhya Pradesh on 29th, East Madhya Pradesh, Chhattisgarh on 29th & 30th May.
- ✓ **Isolated heavy rainfall** likely over Vidarbha, Chhattisgarh on 29th, Bihar on 29th & 30th, Gangetic West Bengal, Odisha on 30th with isolated **very heavy rainfall** over Gangetic West Bengal, Odisha on 29th May.

Northwest India:

- ✓ **Scattered to fairly widespread** light/moderate rainfall accompanied with **thunderstorm, lightning & gusty winds speed reaching 40-50 kmph** likely over likely over Jammu-Kashmir-Ladakh-Gilgit-Baltistan-Muzaffarabad, Himachal Pradesh, Uttarakhand, Punjab, Haryana Chandigarh & Delhi; **isolated to scattered** rainfall over Uttar Pradesh, Rajasthan during 29th May-02nd June with **Thundersquall wind speed reaching 50-60 kmph gusting to 70 kmph** likely over Rajasthan, Punjab, Haryana Chandigarh & Delhi during 29th-30th, Jammu-Kashmir-Ladakh-Gilgit-Baltistan-Muzaffarabad, East Uttar Pradesh on 29th, Himachal Pradesh on 31st May & 01st June.
- ✓ **Isolated heavy rainfall** also likely over Jammu-Kashmir-Ladakh-Gilgit-Baltistan-Muzaffarabad on 30th & 31st, Himachal Pradesh on 31st May & 01st June, Uttarakhand during 30th May -02nd June.
- ✓ **Dust storm** also very likely at isolated places over West Rajasthan on 29th & 30th May.

Maximum Temperature Forecast:

- ❖ No significant change in maximum temperatures likely over Northwest India during next 24 hours; gradual fall by 2-4°C thereafter for subsequent 3 days and no large change thereafter.
- ❖ Rise by about 2-3°C in maximum temperatures likely over Central India during next 3 days and no large change thereafter.
- ❖ No significant change in maximum temperatures likely over rest parts of the country.

Heat wave warnings:

- ❖ **Heat wave conditions** very likely in isolated pockets of West Rajasthan on 30th & 31st May.

FISHERMEN WARNINGS (Graphics in Annexure VI)

(A) **Fishermen are advised not to venture over** south Arabian Sea & southern parts of central Arabian Sea from 1130 IST of 29th to 0530 IST of 01st June; over southeast Arabian Sea, Lakshadweep, Maldives, Comorin areas from 0530 IST of 31st May to 0530 IST of 03rd June; over Gulf of Mannar from 1130 IST of 29th to 0530 IST of 03rd June; and along & off Kerala, Karnataka coasts from 1130 IST of 29th to 0530 IST of 02nd June; along and off south Konkan, Goa coasts on 29th May; along and off Somalia coasts and adjoining sea areas from 1130 IST of 29th to 0530 IST of 03rd June; along and off Gujarat coast from 0530 IST of 30th to 0530 IST of 02nd June; off north Gujarat coast on 02nd June.

(B) **Fishermen are advised not to venture along & off Tamil Nadu, Andhra Pradesh, Odisha, West Bengal, Bangladesh, Myanmar coasts, over entire Bay of Bengal from 1130 IST of 29th to 0530 IST of 31st May; off Tamil Nadu, Andhra Pradesh, Odisha, West Bengal, Bangladesh, Myanmar coasts from 0530 IST of 31st May to 0530 IST of 01st June; Most parts of Bay of Bengal from 0530 IST of 01st June to 0530 IST of 03 June.**

(C) **Fishermen are advised not to venture into the Andaman Sea on 29th May & 30th May.**

Total suspension of fishing operations over above-mentioned areas and dates.

iv. Weather conditions and forecast over Delhi/NCR during 29th May to 01st June, 2025 (Annexure VII)

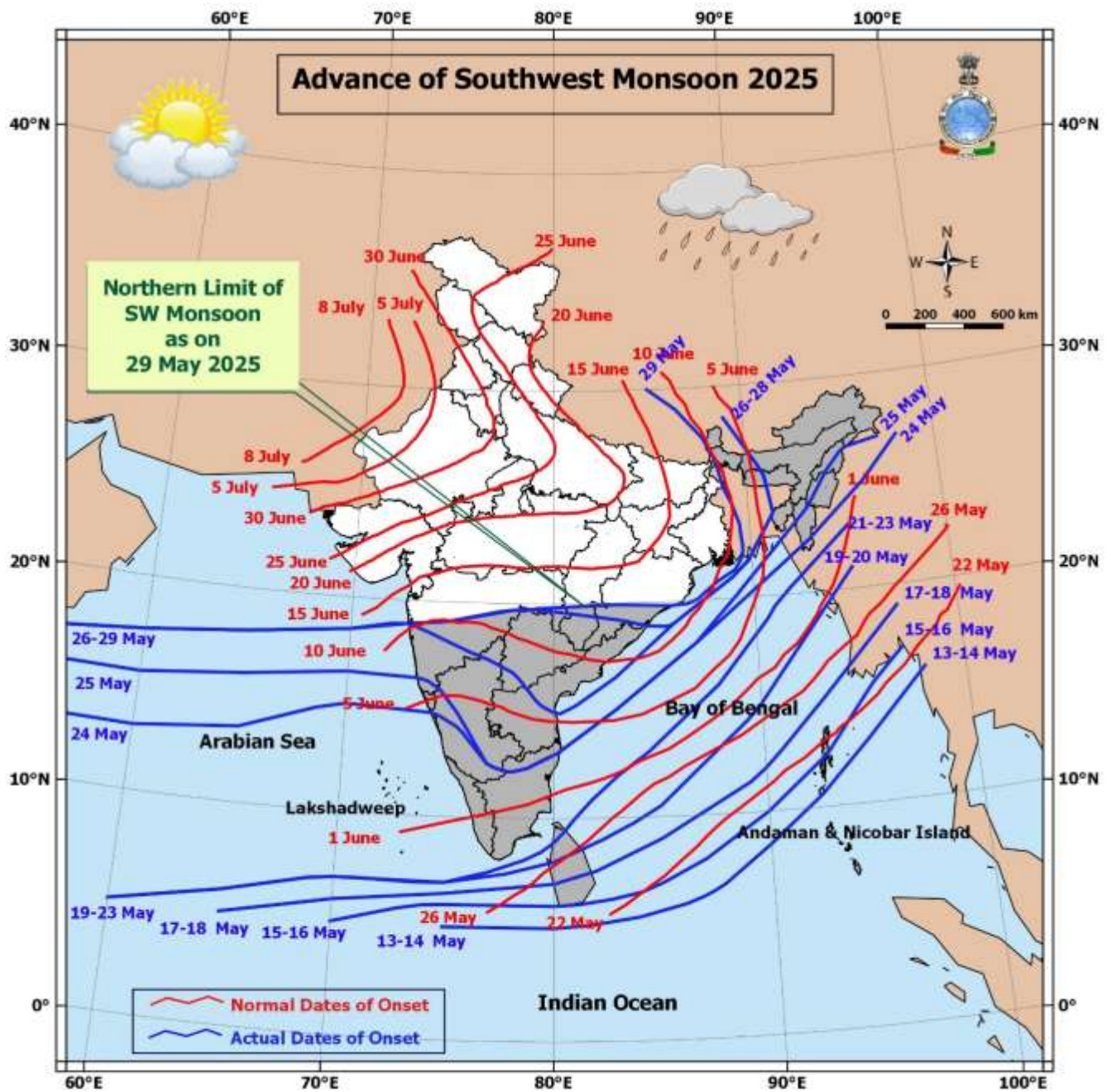
For more details, kindly refer National Weather Bulletin:

https://mausam.imd.gov.in/responsive/all_india_forecast_bulletin.php

For District wise warnings refer: <https://mausam.imd.gov.in/responsive/districtWiseWarningGIS.php>

For Depression Bulletins refer:

https://rsmcnewdelhi.imd.gov.in/uploads/archive/1/1_fba0b7_02.National%20Bulletin%20No%2002-24May2025_0830IST.pdf



Significant weather reported during past 24 hours till 0830 hours IST of today:

- ❖ **Light/moderate Rainfall with thunderstorm & lightning** observed at **most places** over Konkan & Goa , Kerala & Mahe, Odisha, Jharkhand, Gangetic West Bengal, Nagaland, Manipur, Mizoram & Tripura and Coastal Karnataka; **at many places** over West Uttar Pradesh, Madhya Maharashtra , Assam & Meghalaya, West Rajasthan, Himachal Pradesh, West Madhya Pradesh, Sub-Himalayan West Bengal & Sikkim, Bihar, Uttarakhand, Jammu & Kashmir and Ladakh, East Uttar Pradesh, Saurashtra & Kutch, East Madhya Pradesh, South Interior Karnataka, Tamilnadu Puducherry & Karaikal, Coastal Andhra Pradesh & Yanam, Chhattisgarh, Rayalaseema, Marathwada, Vidarbha, Andaman & Nicobar Islands, North Interior Karnataka, East Rajasthan and Lakshadweep ; **Dry** over rest of the country.

Rainfall recorded (in cm) reported during past 24 hours till 0830 hours IST of today:

- ❖ **Tamil Nadu, Puducherry & Karaikal:** Avalanche (dist Nilgiris) 19; Chinnakalar (dist Coimbatore), Upper Bhavani (dist Nilgiris) 12 Each; Periyar (dist Theni), Valparai PTO (dist Coimbatore), Pwd Makkinampatti (dist Coimbatore) 11 Each; Sholayar (dist Coimbatore), Cincona (dist Coimbatore) 9 Each; Pollachi (dist Coimbatore), Valparai Pap (dist Coimbatore), Chamraj Estate (dist Nilgiris) 8 Each; Valparai Taluk Office (dist Coimbatore), G Bazar (dist Nilgiris), K Bridge (dist Nilgiris), Upper Gudalur (dist Nilgiris), Nalumukku (dist Tirunelveli), Oothu (dist Tirunelveli), Kodumudiyaru Dam (dist Tirunelveli) 7 Each;
- ❖ **Kerala & Mahe:** Cheruvanchery AWS (dist Cannur) 15; Peermade To (dist Idukki) 13; Vyttili (dist Wynad), Peringome AWS (dist Cannur) 12 Each; Irikur (dist Cannur), Vadakara (dist Kozhikode), Munnar Kseb (dist Idukki), Kannur (dist Cannur), Idukki (dist Idukki), Ayyankunnu AWS (dist Cannur) 11 Each; Pinarayi AWS (dist Cannur) 10; Quilandi (dist Kozhikode), Chalakudi (dist Thrissur), Hosdurg (dist Kasargod), Kannur Airport AWS (dist Cannur), Chemberi AWS (dist Cannur), Vellathoval AWS (dist Idukki), Ams Kannur (dist Cannur), Manantoddy (dist Wynad) 9 Each; Thodupuzha (dist Idukki), Angadipuram (dist Malappuram), Kalamassery AWS (dist Ernakulam), Vaikkom AWS (dist Kottayam), Urumi AWS (dist Kozhikode), Lower Sholayar AWS (dist Thrissur) 8 Each; Tellichery (dist Cannur), Kudulu (dist Kasargod), Myladumpara ARG (dist Idukki), Chittur (dist Palakkad), Choondy AWS (dist Ernakulam), Muliya AWS (dist Kasargod), Vannamada AWS (dist Palakkad), Malampuzha Dam AWS (dist Palakkad), Athirappalli AWS (dist Thrissur), Alwaye PWD (dist Ernakulam) 7 Each;
- ❖ **Coastal Karnataka:** Manki (dist Uttara Kannada) 14; Uppinangadi (dist Dakshina Kannada) 13; Karwar (dist Uttara Kannada), Gersoppa (dist Uttara Kannada) 11 Each; Mani (dist Dakshina Kannada), Bantwal (dist Dakshina Kannada), Ankola (dist Uttara Kannada), Honavar (dist Uttara Kannada), Puttur HMS (dist Dakshina Kannada) 10 Each; Udupi (dist Udupi), Panambur (dist Dakshina Kannada), Siddapura (dist Udupi), Kundapur (dist Udupi), Kota (dist Udupi) 9 Each; Mudubidre (dist Dakshina Kannada), Kumta (dist Uttara Kannada) 8 Each; Mangaluru AP (dist Dakshina Kannada), Karkala (dist Udupi), Gokarna (dist Uttara Kannada), Kadra (dist Uttara Kannada), Sulya (dist Dakshina Kannada) 7 Each;
- ❖ **South Interior Karnataka:** Bhagamandala (dist Kodagu) 13; Agumbe Emo (dist Shivamogga) 12; Napoklu (dist Kodagu) 8; Kammardi (dist Chikkamagaluru), Somwarpet (dist Kodagu), Kottigehara (dist Chikkamagaluru) 7 Each;
- ❖ **Konkan & Goa:** Sanguem (dist South Goa) 13; Canacona (dist South Goa) 12; Margao (dist South Goa) 10; Panjim (dist North Goa) 9; Mapusa (dist North Goa) 7;
- ❖ **Odisha:** Lanjigarh (dist Kalahandi) 10; Chilika (dist Khurda) 8; Krishnaprasad (dist Puri), Ganjam (dist Ganjam), Begunia (dist Khurda), Angul (dist Angul) 7 Each;
- ❖ **Assam & Meghalaya:** Kokrajhar (dist Kokrajhar), Dhupdhara ARG (dist Goalpara) 8 Each; Gharmura (dist Hailakandi), Bahalpur (dist Dhubri) 7 Each;
- ❖ **Nagaland, Manipur, Mizoram & Tripura:** Chandel AWS (dist Chandel) 8;
- ❖ **Sub Himalayan West Bengal & Sikkim:** Lava (dist Darjeeling), Lava (dist Kalimpong) 7 Each;
- ❖ **Vidarbha:** Kamptee (dist Nagpur), Amgaon (dist Gondia) 7 Each;
- ❖ **Telangana:** Utkoor (dist Narayanpet) 7;
- ❖ **Madhya Maharashtra:** Mahabaleshwar (dist Satara) 7.

Realised Gusty Winds (KMPH) during past 24hours ending at 0300 UTC of today i.e. 29.05.2025:

- ❖ **Tamilnadu Puducherry & Karaikal:** Veda sandur(74 Kmph), Kadavur Taluk Office(61 Kmph), Natham_Isro(54 Kmph), Thiruchendur(52), Namakkal_Amfu(59), Kovilpatti_Amfu(56),
- ❖ **Assam & Meghalaya:** Gossaigaon=68,Kokrajhar=47,Dhubri=45,Goalpara=43,
- ❖ **East Uttar Pradesh:** Kannauj_Kvk-63, Lucknow (Ap)-33
- ❖ **Himachal Pradesh:** Rekon-Pe,-60, Tabo-54, Kufri-50, Shimla-48, Nehru-44
- ❖ **Andaman & Nicobar Islands:** Sri Vijayapuram (59)
- ❖ **Uttarakhand:** Jollygrant-57, Maldevta-41, Roorkee-39, Chamoli-37, Pantnagar-35, (Ams) Jollygrant-41
- ❖ **Gangetic West Bengal:** Amta (46); Canning (41); Raidighi (39); Digba, Diamond Harbour (37); Sonarpur (35); Jagatballavpur, Berhampore, Kalyani, Purulia, Alipore (33); Dum Dum (31); Durgapur, Nimpith (30)
- ❖ **Haryana:** Karnalaws 56, Kaithal Awa 43
- ❖ **West Uttar Pradesh:** Farrukhabad-52
- ❖ **Madhya Maharashtra:** Madhya Maharashtra: Kurvande(Pune) (52), Rajgurunagar(Pune) (48 Kmph), Vilholi(Nashik)(46)
- ❖ **Konkan & Goa:** Devgad_Sindhudurg(50), Dapoli (Ratnagiri)(46 Kmph), Matheran(Raigad) (48)
- ❖ **Mizoram:** Saiha 42
- ❖ **Odisha:** Ranital, Mayurbhanj (43)
- ❖ **Jharkhand:** Simdega (50); Ranchi (39)

- ❖ **Sub-Himalayan West Bengal & Sikkim:** Dhupguri (41); Mal (33); Ramshai, Malda (30);
- ❖ **Punjab:** Ropar Kvk Aws 41, Mohali Aws 37

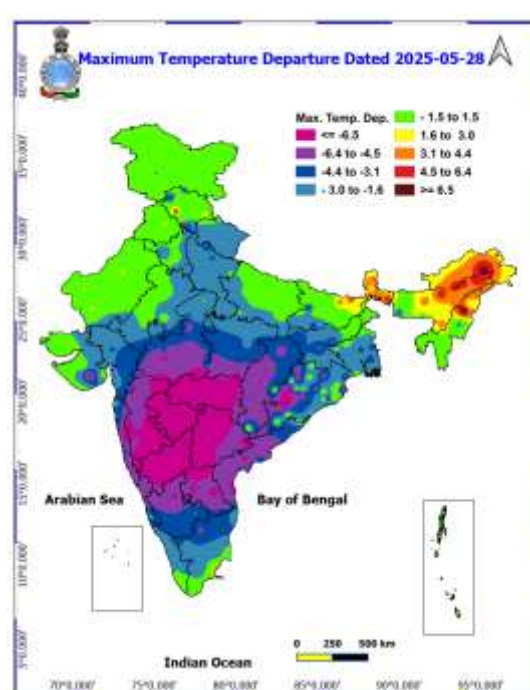
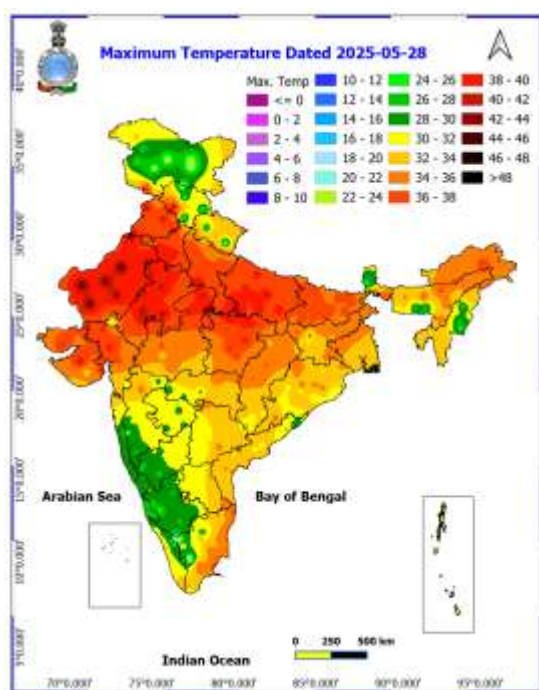
ANNEXURE III

Temperature observations during past 24 hours till 0830 hours IST of today:

- ❖ Yesterday, **Maximum Temperatures** were in the **range of 40-45°C** in many parts of Rajasthan, Punjab; in some parts of Haryana-Chandigarh, East Uttar Pradesh, East Madhya Pradesh; in isolated parts of West Madhya Pradesh; in the **range 36-40°C** in many parts of Bihar ; in some parts of Assam & Meghalaya, Gangetic West Bengal, Gujarat state, Tamil Nadu, Puducherry & Karaikal; in isolated parts of Chhattisgarh, Jharkhand, Telangana and they were **less than 36°C** elsewhere over remaining parts of the country. Yesterday, the **highest maximum temperature of 44.8°C** was reported at **Barmer (West Rajasthan)**.
- ❖ Yesterday, **Maximum Temperature** were **markedly above normal(> 5.1°C)** at most places over Arunachal Pradesh; at few places over Assam & Meghalaya; at isolated places over Nagaland, Manipur, Mizoram & Tripura, Sub Himalayan West Bengal & Sikkim, West Uttar Pradesh and Tamil Nadu, Puducherry & Karaikal; **appreciably above normal(3.1°C to 5.0°C)** at isolated places over Bihar, Himachal Pradesh and East Madhya Pradesh; **above normal(1.6°C to 3.0°C)** at few places over West Rajasthan; at isolated places over East Uttar Pradesh, Punjab and Saurashtra & Kutch; **near normal(- 1.5°C to 1.5°C)** at many places over Andaman & Nicobar Islands; at most places over Jammu Kashmir Ladakh-Gilgit-Baltistan-Muzaffarabad, East Rajasthan and Lakshadweep; at few places over Gangetic West Bengal, Odisha, Haryana-Chandigarh-Delhi, Gujarat Region, South Interior Karnataka and Kerala & Mahe; at isolated places over West Madhya Pradesh and Konkan & Goa (Fig.2).

Fig.1: Maximum Temperatures

Fig.2: Departure of Maximum Temperatures

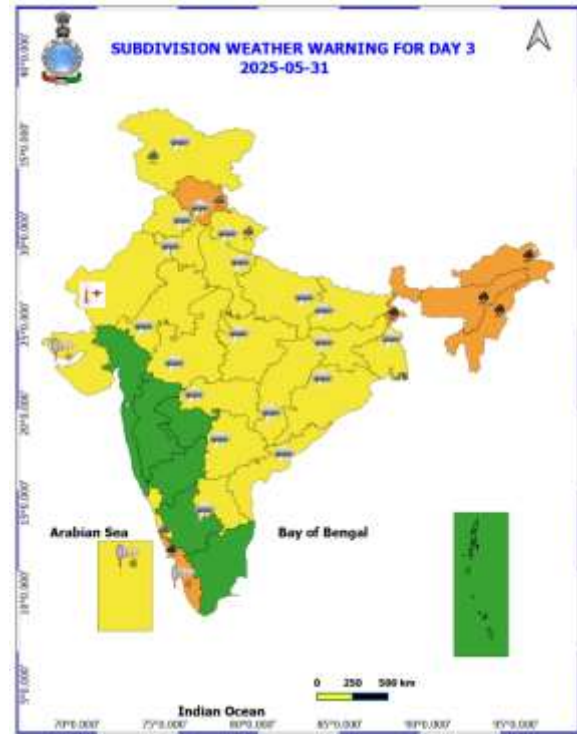
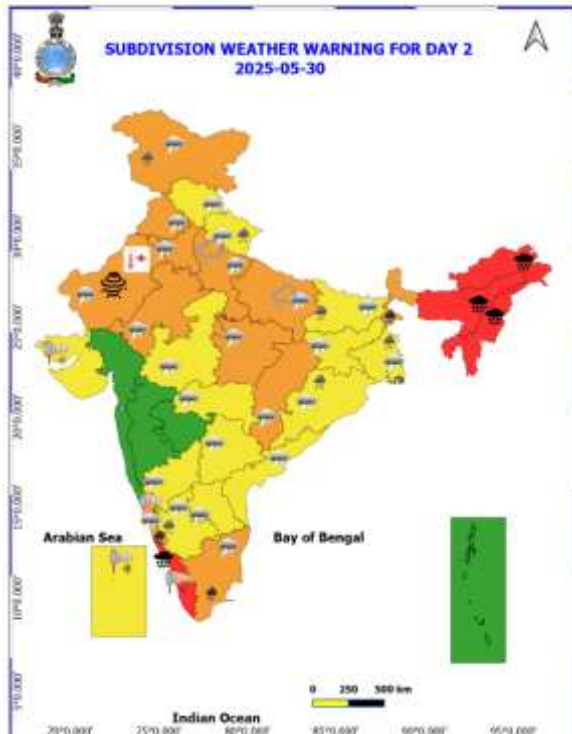
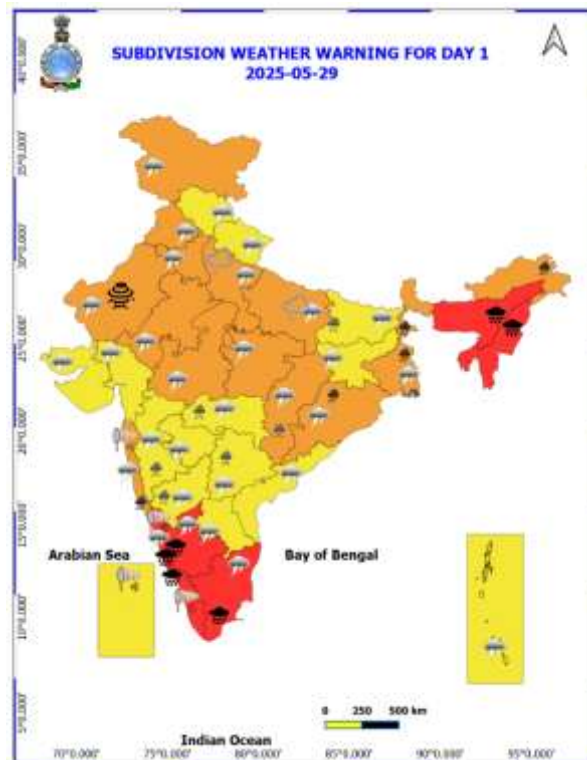


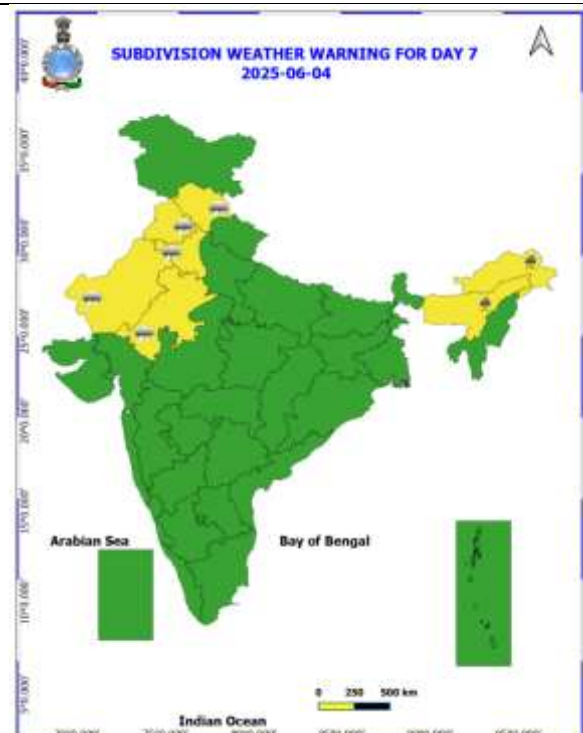
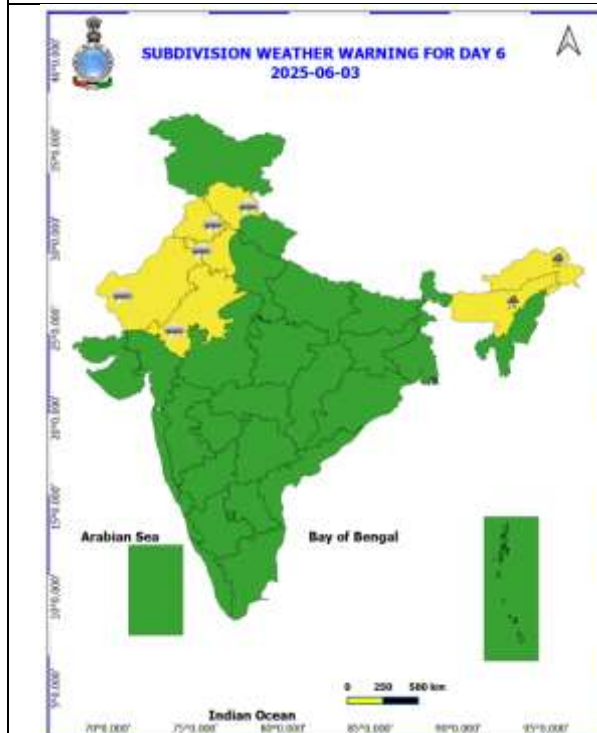
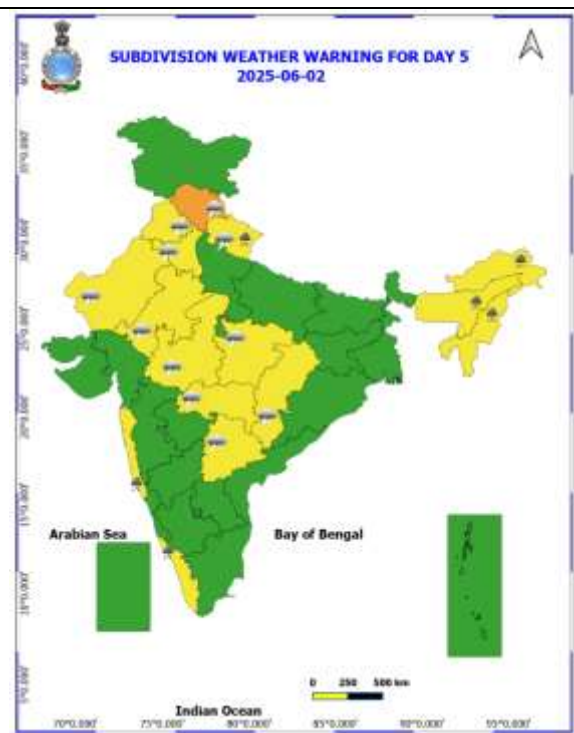
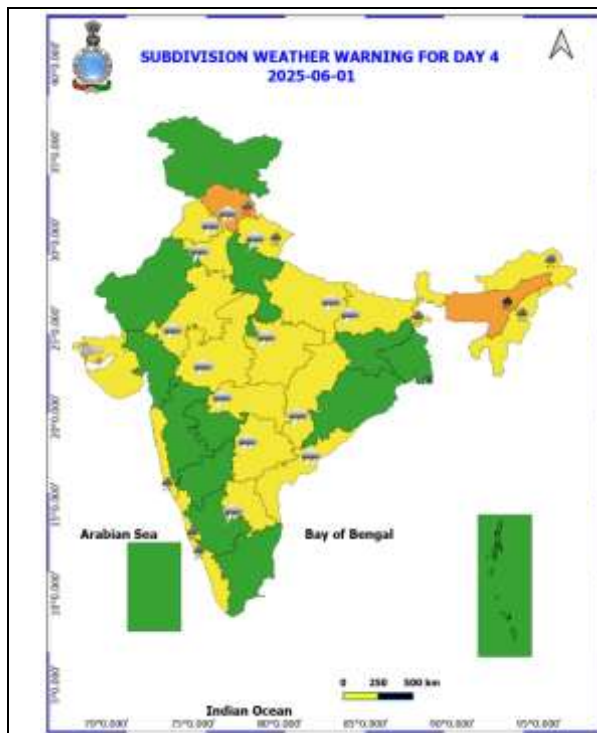
ANNEXURE IV

7 Days Rainfall Forecast								
S. No.	Subdivision	29-May	30-May	31-May	01-Jun	02-Jun	03-Jun	04-Jun
		Day 1	Day 2	Day 3	Day 4	Day 5	Day 6	Day 7
1	ANDAMAN & NICOBAR ISLANDS	FWS	FWS	WS	WS	WS	FWS	FWS
2	ARUNACHAL PRADESH	WS	WS	WS	WS	FWS	FWS	FWS
3	ASSAM & MEGHALAYA	WS	WS	WS	WS	FWS	FWS	FWS
4	NAGALAND, MANIPUR, MIZORAM & TRIPURA	WS	WS	WS	FWS	FWS	FWS	FWS
5	SUB-HIMALAYAN WEST BENGAL & SIKKIM	SCT	WS	WS	WS	WS	FWS	FWS
6	GANGETIC WEST BENGAL	WS	WS	FWS	SCT	ISOL	ISOL	ISOL
7	ODISHA	WS	FWS	SCT	ISOL	ISOL	ISOL	ISOL
8	JHARKHAND	SCT	SCT	SCT	ISOL	ISOL	ISOL	ISOL
9	BIHAR	ISOL	SCT	SCT	ISOL	ISOL	ISOL	DRY
10	EAST UTTAR PRADESH	SCT	SCT	SCT	ISOL	ISOL	ISOL	ISOL
11	WEST UTTAR PRADESH	SCT	SCT	ISOL	ISOL	ISOL	ISOL	ISOL
12	UTTARAKHAND	SCT	FWS	FWS	FWS	FWS	FWS	FWS
13	HARYANA CHANDIGARH & DELHI	SCT	FWS	ISOL	SCT	SCT	SCT	SCT
14	PUNJAB	FWS	FWS	SCT	SCT	SCT	SCT	SCT
15	HIMACHAL PRADESH	ISOL	SCT	FWS	FWS	FWS	SCT	SCT
16	JAMMU & KASHMIR AND LADAKH	SCT	WS	WS	SCT	ISOL	ISOL	ISOL
17	WEST RAJASTHAN	ISOL	ISOL	DRY	DRY	ISOL	ISOL	ISOL
18	EAST RAJASTHAN	ISOL	ISOL	ISOL	ISOL	ISOL	ISOL	ISOL
19	WEST MADHYA PRADESH	SCT	ISOL	ISOL	ISOL	ISOL	ISOL	ISOL
20	EAST MADHYA PRADESH	SCT	SCT	ISOL	ISOL	SCT	ISOL	ISOL
21	GUJARAT REGION	SCT	ISOL	ISOL	ISOL	ISOL	ISOL	ISOL
22	SAURASHTRA & KUTCH	SCT	ISOL	ISOL	ISOL	ISOL	ISOL	ISOL
23	KONKAN & GOA	FWS	SCT	SCT	FWS	SCT	ISOL	ISOL
24	MADHYA MAHARASHTRA	SCT	ISOL	ISOL	ISOL	ISOL	ISOL	ISOL
25	MARATHAWADA	ISOL	ISOL	ISOL	ISOL	ISOL	ISOL	ISOL
26	VIDARBHA	SCT	SCT	ISOL	ISOL	ISOL	ISOL	ISOL
27	CHHATTISGARH	SCT	SCT	ISOL	ISOL	ISOL	ISOL	ISOL
28	COASTAL ANDHRA PRADESH & YANAM	SCT	SCT	SCT	ISOL	ISOL	ISOL	ISOL
29	TELANGANA	FWS	SCT	ISOL	ISOL	ISOL	ISOL	ISOL
30	RAYALASEEMA	SCT	SCT	ISOL	ISOL	ISOL	ISOL	ISOL
31	TAMILNADU PUDUCHERRY & KARAIKAL	SCT	SCT	ISOL	ISOL	ISOL	ISOL	ISOL
32	COASTAL KARNATAKA	WS	WS	WS	FWS	FWS	FWS	SCT
33	NORTH INTERIOR KARNATAKA	FWS	SCT	ISOL	ISOL	ISOL	ISOL	ISOL
34	SOUTH INTERIOR KARNATAKA	WS	FWS	SCT	ISOL	ISOL	ISOL	ISOL
35	KERALA & MAHE	WS	WS	WS	WS	FWS	FWS	FWS
36	LAKSHADWEEP	WS	WS	WS	WS	FWS	FWS	FWS

- As the lead period increases forecast accuracy decreases.

ANNEXURE V





- Action may be taken based on ORANGE AND REDCOLOUR warnings.
- Vulnerable regions likely urban and hilly areas action may be initiated for heavy rainfall warning.
- As the lead period increases forecast accuracy decreases.

Detailed districtwise Multi Hazard weather warning for next five days available at
<https://mausam.imd.gov.in/responsive/districtWiseWarningGIS.php>



Fishermen Warning Graphics

Day 1: 29.05.2025/11:30AM to 30.05.2025/05:30AM



Day 2: 30.05.2025/05:30AM to 31.05.2025/05:30AM



Day 3: 31.05.2025/05:30AM to 01.06.2025/05:30AM



Day 4: 01.06.2025/05:30AM to 02.06.2025/05:30AM



Day 5: 02.06.2025/05:30AM to 03.06.2025/05:30AM



Squally Weather with wind speed 35-50 kmph gusting to 60 kmph

Squally weather with wind speed 45-55 kmph gusting to 65 kmph

Squally wind with speed 45-55 kmph gusting to 65 kmph

Squally wind with speed 50-60 kmph gusting to 70 kmph

Fishermen are advised not to venture into the marked areas.

Flash Flood Guidance

24 hours Outlook for the Flash Flood Risk (FFR) till 1130 IST of 30-05-2025:

Low to Moderate flash flood risk likely over few watersheds & neighbourhoods of following Met Sub-divisions during next 24 hours.

Assam & Meghalaya - Kamrup Rural, N.C Hills, Karimganj, Kokrajhar, Ro-Bhoi, Darang, Morigaon, Sonitpur, Karbi Analog, Cachar, East/West Khasi Hills, West/East/South Garo Hills and Jaintia Hills districts.

Nagaland Mizoram Manipur Tripura (NMMT) – Tuensang, Mon, Kiphire, Zunheboto, Kohima, Phek, Ukhrul, Chandel, Bishnupur, North Tripura, Dhalai, South Tripura and West Tripura, Thoubal, Aizawl districts.

Arunachal Pradesh – Tirap, Changlang, Anjaw, Dabang Valley, Lower Dabang Valley, West Siang, Lower Subansiri, Papum Pare, Kurung Kumey, West/West Kameng, Tawang, Surface runoff/ Inundation may occur at some fully saturated soils & low-lying areas over Area of Concern (AoC) as shown in map due to expected rainfall occurrence in next 24 hours.

24 hours Outlook for the Flash Flood Risk (FFR) till 1130 IST of 30-05-2025:

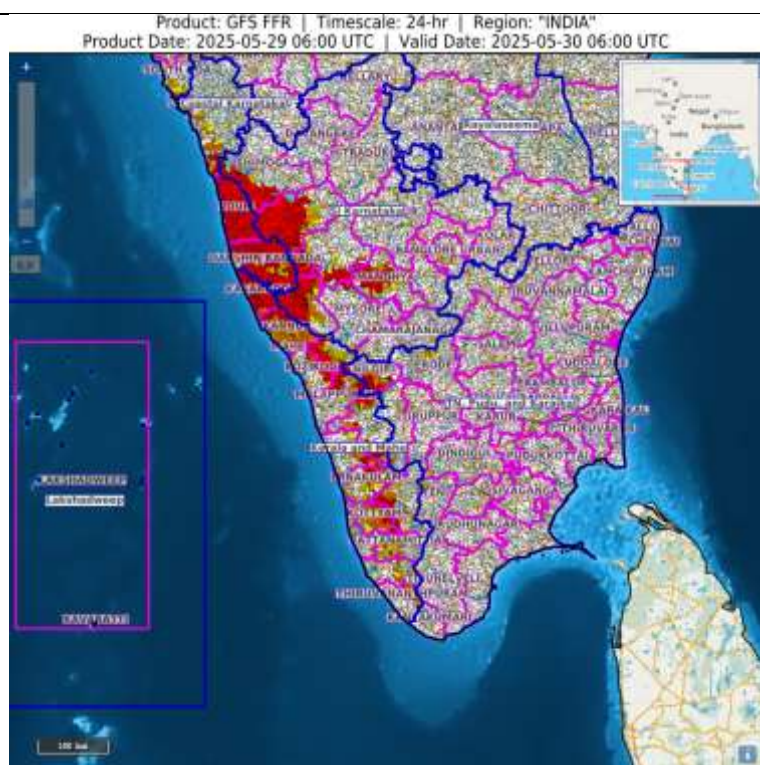
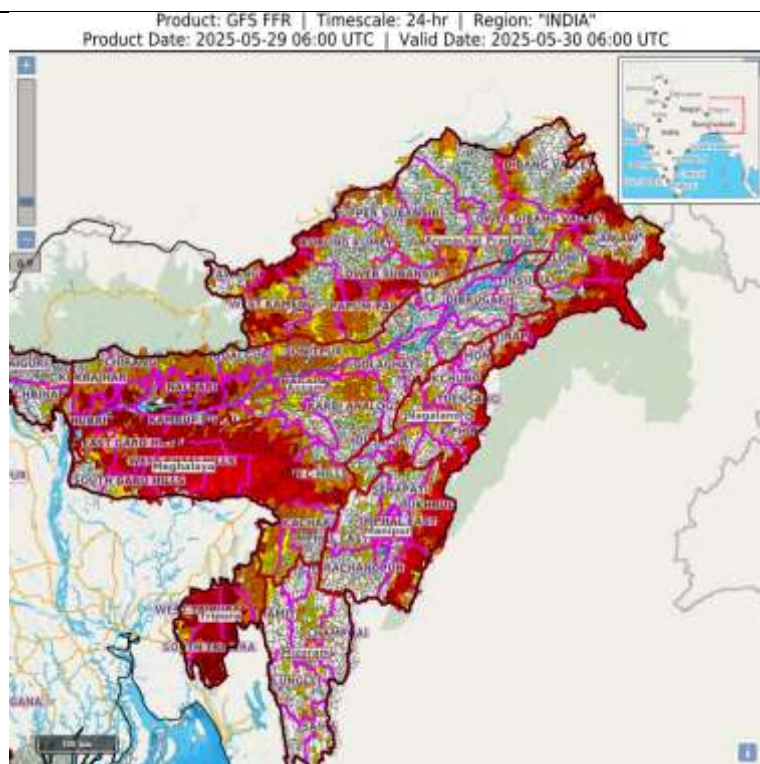
Low to Moderate flash flood risk likely over few watersheds & neighbourhoods of following Met Sub-divisions during next 24 hours.

Coastal Karnataka – Dakshin Kannada and Udupi districts

South Interior Karnataka – Shimoga, Chiknagalur, Hassan, Mandya and Kodagu districts

Kerala & Mahe – Kasargod, Kannur, Mahe, Wayanad, Kozhikode, Malapuram, Palakkad and Trishur districts.

Surface runoff/ Inundation may occur at some fully saturated soils & low-lying areas over Area of Concern (AoC) as shown in map due to expected rainfall occurrence in next 24 hours.



Weather forecast over Delhi/NCR during 29th May to 01st June 2025**Past Weather:**

There has been rise in minimum temperature upto 1°C and rise in maximum temperature up to 1°C over Delhi/NCR during the past 24 hours. The maximum and minimum temperatures over Delhi are in the range of 38 to 39°C and 26 to 29°C respectively. The minimum temperature was above normal up to 1 - 2°C and the maximum temperature was below normal up to 2 - 4°C over Delhi/NCR. Partly cloudy sky conditions with predominant surface wind from the southeast direction with wind speeds less than 15 kmph prevailed during the past 24 hours. Partly cloudy sky conditions with wind speed less than 10 kmph from the southeast direction prevailed over the region in the forenoon today.

Weather Forecast:

29.05.2025: Partly cloudy sky. Light rain accompanied with thunderstorm/lightning and gusty winds (speed 40 – 50 kmph) temporarily reaching to 60 kmph during thunderstorm towards evening/night. The maximum temperatures over Delhi are likely to be in the range of 37 to 39°C. The maximum temperature will be below normal up to 1 - 2°C. The predominant surface wind will likely be from the northwest direction with a wind speed of less than 15 kmph till evening. It would increase becoming less than 18 kmph from the northeast direction during the night.

30.05.2025: Generally cloudy sky. Light to moderate rain accompanied with thunderstorm/lightning and gusty winds (speed 50 – 60 kmph) temporarily reaching to 70 kmph during thunderstorm. The maximum and minimum temperatures over Delhi are likely to be in the range of 36 to 38°C and 27 to 29°C respectively. The minimum temperature will be above normal up to 1 - 3°C and the maximum temperature will be below normal up to 2 - 4°C. The predominant surface wind will likely be from the north direction with a wind speed of less than 15 kmph during the morning hours. The wind speed will gradually decrease becoming 08-10 kmph from the northeast direction in the afternoon. It will increase becoming less than 15 kmph from the northeast direction during evening and night.

31.05.2025: Partly cloudy sky. Very light to light rain accompanied with thunderstorm/lightning and gusty winds (speed 30 – 40 kmph) temporarily reaching to 50 kmph during thunderstorm. The maximum and minimum temperatures over Delhi are likely to be in the range of 35 to 37°C and 27 to 29°C respectively. The minimum temperature will be above normal up to 1 - 3°C and the maximum temperature will be below normal up to 3 - 5°C. The predominant surface wind will likely be from the southwest direction with a wind speed of less than 12 kmph during the morning hours. The wind speed will gradually increase becoming 10-15 kmph from the southwest direction in the afternoon. It will decrease becoming less than 12 kmph from the southeast direction during evening and night.

01.06.2025: Partly cloudy sky. Possibility of thundery development. The maximum and minimum temperatures over Delhi are likely to be in the range of 36 to 38°C and 28 to 30°C respectively. The minimum temperature will be above normal up to 1 - 3°C and the maximum temperature will be below normal up to 2 - 4°C. The predominant surface wind will likely be from the southwest direction with a wind speed of less than 12 kmph during the morning hours. The wind speed will gradually increase becoming 10-15 kmph from the southwest direction in the afternoon. It will increase becoming less than 18 kmph from the southwest direction during evening and night.

Impact expected and Action Suggested due to thunderstorm with lightning/gusty winds:

- Be cautious and take precautionary measures, though there is the likelihood of thunderstorm/lightning and gusty winds (speed 40 – 50 kmph) temporarily reaching to 60 kmph during thunderstorm with dust rising surface winds.
- Breaking of tree branches, uprooting of large avenue trees, Large dead limbs blown from trees, Damage to standing crops, Minor to major damage to power and communication lines due to breaking of branches, Partial damage to vulnerable structures due to strong winds, Loose objects may fly.
- People are advised to keep a watch on the weather for worsening conditions and be ready to move to safer places accordingly, stay indoors, close windows & doors and avoid travel if possible, take safe shelters; do not take shelter under trees, do not lie on concrete floors and do not lean against concrete walls, unplug electrical/ electronic appliances, immediately get out of water bodies, keep away from all the objects that conduct electricity.

Impact expected and action suggested over Northeastern States, Sub-Himalayan West Bengal & Sikkim due to heavy rainfall (orange and red areas) and squally winds

Impact expected:

- ❖ Breaking of tree branches, uprooting of small trees like banana, papaya, drum sticks. Strong wind and rain may damage plantation, horticulture and standing crops.
- ❖ Partial damage to vulnerable structures due to strong winds and rain.
- ❖ Minor damage to kutcha houses/walls, huts and roads due to heavy rain.
- ❖ Loose objects may fly.
- ❖ Onshore and offshore operations may get affected.
- ❖ Small ships, trawlers and boats may be affected.
- ❖ Road and rail traffic may be affected due to heavy rain and squally winds.
- ❖ There could be localised landslides, mudslides, landslips, water logging, inundation and flooding over low lying areas.
- ❖ Occasional reduction in visibility due to heavy rainfall.
- ❖ Helicopter services may get affected.

Action suggested:

- ❖ People are advised to keep a watch on the weather for worsening conditions and be ready to move to safer places accordingly.
- ❖ Take safe shelters; do not take shelter under trees, as there could be lightning.
- ❖ In case of expected lightning, unplug electrical/ electronic appliances, immediately, get out of water bodies and keep away from all the objects that conduct electricity.
- ❖ Tourism and recreational activities to be regulated.
- ❖ Onshore and offshore activities to be judiciously regulated.
- ❖ Helicopter services to be regulated.

Impact & Action Suggested due to Extremely and heavy to very heavy rainfall over west coast and other areas (For Red & Orange colour warning areas)

- ❖ **Isolated exceptionally heavy rainfall** also likely over Meghalaya on 30th May.
- ❖ **Extremely heavy rainfall** at isolated places over Tamilnadu Puducherry & Karaikal, Coastal Karnataka, South Interior Karnataka on 29th; Kerala & Mahe Assam & Meghalaya, Nagaland, Manipur, Mizoram & Tripura on 29th & 30th, Arunachal Pradesh on 30th May.

Impact Expected

- ❖ Localized Flooding of roads, water logging in low lying areas of the above region.
- ❖ Occasional reduction in visibility due to heavy rainfall.
- ❖ Minor damage to kutcha roads.
- ❖ Possibilities of damage to vulnerable structure.
- ❖ Localized Landslides/Mudslides
- ❖ Damage to horticulture and standing crops in some areas due to inundation.
- ❖ It may lead to riverine flooding in some river catchments (for riverine flooding please visit Web page of CWC).

Action Suggested

- ❖ Check for traffic congestion on your route before leaving for your destination.
- ❖ Follow any traffic advisories that are issued in this regard.
- ❖ Avoid going to areas that face the water logging problems often.
- ❖ Avoid staying in vulnerable structure.

Impact expected and action suggested due to isolated thunderstorm with lightning/gusty & Squally winds over

- ✓ **Thundersquall wind speed reaching 50-60 kmph gusting to 70 kmph** over likely over West Madhya Pradesh, Jammu-Kashmir-Ladakh-Gilgit-Baltistan-Muzaffarabad, East Uttar Pradesh on 29th, East Madhya Pradesh, Chhattisgarh, Rajasthan, Punjab, Haryana Chandigarh & Delhi during 29th-30th, Himachal Pradesh on 31st May & 01st June.

Impact expected:

- Minor to Major damage to banana and papaya trees.
- Strong wind/hail may damage plantation, horticulture and standing crops.
- Partial damage to vulnerable structures due to strong winds.
- Minor damage to kutcha houses/walls and huts.
- Loose objects may fly.

Action suggested:

- People are advised to keep a watch on the weather for worsening conditions and be ready to move to safer places accordingly.
- Stay indoors, close windows & doors and avoid travel if possible.
- Take safe shelters; do not take shelter under trees.
- Do not lie on concrete floors and do not lean against concrete walls.
- Unplug electrical/ electronic appliances.
- Immediately get out of water bodies.
- Keep away from all the objects that conduct electricity.

Agromet advisories for likely impact of Heavy Rainfall / Hailstorms / Gusty Winds / Heat Wave

- In **North Eastern States, West Bengal & Sikkim, Odisha, Bihar, Jammu & Kashmir, Chhattisgarh, Konkan & Goa, Madhya Maharashtra, Vidarbha, Tamil Nadu, Kerala, Karnataka and Telangana**, drain out excess water and ensure proper drainage in fields with standing crops and vegetables.
- In **East Uttar Pradesh**, use hail nets and hail caps to prevent mechanical damage in vegetables and orchards due to the possibility of hailstorms.
- Shift the harvested produce in safer places or cover the produce with tarpaulin sheets in the fields. Tie the harvested crops properly and cover them to minimise the risk of displacement due to strong surface winds.
- Provide mechanical support to horticultural crops and staking to vegetables to avoid lodging.
- In **West Rajasthan**, apply light and frequent irrigation in the evening to protect standing crops, vegetables and orchards from the adverse effects of heat waves and high temperatures.

Livestock / Poultry / Fishery

- Keep the animals inside the shed during heavy rainfall / hailstorm and provide them balanced feed.
- Store feed and fodder in a safe place to prevent spoilage.
- Construct an outlet with proper netting around the ponds to drain out excess water, thereby preventing fish from escaping in case of overflow.
- To reduce the effect of heat wave/high temperature, cover the roof of poultry sheds with grass. Also, provide clean, hygienic and plenty of drinking water to animals.

Legends & abbreviations:

- ❖ **Heavy Rain:**64.5-115.5mm; **Very Heavy Rain:**115.6-204.4mm; **Extremely Heavy Rain:** >204.4mm.
- ❖ **Obsy:** Observatory; **AWS:** Automatic Weather Station; **ARG:** Automatic Rain Gauge; **dist:** District; **NH:** National Highway; **KVK:** Krishi Vigyan Kendra; **DVC:** Damodar Valley Corporation; **PTO:** Part Time Office, **Aero:** Aerodrome, **IAF:** Indian Air Force.
- ❖ **Region wise classification of meteorological Sub-Divisions:**
 - **Northwest India:** Western Himalayan Region (Jammu-Kashmir-Ladakh-Gilgit-Baltistan-Muzaffarabad, Himachal Pradesh and Uttarakhand); Punjab, Haryana-Chandigarh-Delhi; West Uttar Pradesh, East Uttar Pradesh, West Rajasthan and East Rajasthan.
 - **Central India:** West Madhya Pradesh, East Madhya Pradesh, Vidarbha and Chhattisgarh.
 - **East India:** Bihar, Jharkhand, Sub-Himalayan West Bengal & Sikkim; Gangetic West Bengal, Odisha and Andaman & Nicobar Islands.
 - **Northeast India:** Arunachal Pradesh, Assam & Meghalaya and Nagaland, Manipur, Mizoram & Tripura.
 - **West India:** Gujarat Region, Saurashtra & Kutch, Konkan & Goa, Madhya Maharashtra and Marathawada.
 - **South India:** Coastal Andhra Pradesh & Yanam, Telangana, Rayalaseema, Coastal Karnataka, North Interior Karnataka, South Interior Karnataka, Kerala & Mahe, Tamil Nadu, Puducherry & Karaikal and Lakshadweep.

LEGENDS

1. अंडमान और निकोबार द्वीपसमूह

2. अरुणाचल प्रदेश

3. असम और मेघालय

4. नागालैंड, मणिपुर, मिजोरम और त्रिपुरा

5. उप-हिमालयी पश्चिम बंगाल और सिक्किम

6. गंगीय पश्चिम बंगाल

7. ओडिशा

8. झारखंड

9. बिहार

10. पूर्वी उत्तर प्रदेश

11. पश्चिम उत्तर प्रदेश

12. उत्तराखंड

13. हरियाणा, चंडीगढ़ और दिल्ली

14. पंजाब

15. हिमाचल प्रदेश

16. जम्मू और कश्मीर और लद्दाख

17. पश्चिम राजस्थान

18. पूर्वी राजस्थान

19. पश्चिम मध्य प्रदेश

20. पूर्वी मध्य प्रदेश

21. गुजरात

22. सौराष्ट्र

23. कोंकण और गोवा

24. मध्य महाराष्ट्र

25. मराठवाड़ा

26. विदर्भ

27. छत्तीसगढ़

28. तटीय आंध्र प्रदेश और यनम

29. तेलंगाना

30. रायलसीमा

31. तमिलनाडु, पुडुचेरी और कराईकल

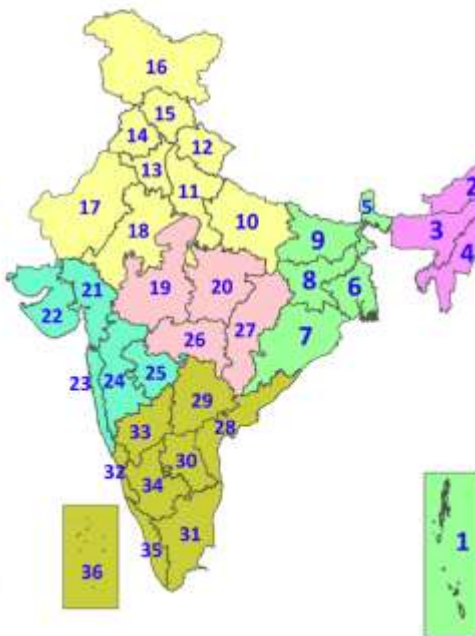
32. तटीय कर्नाटक

33. आंतरिक उत्तरी कर्नाटक

34. आंतरिक दक्षिणी कर्नाटक

35. केरल और माहे

36. लक्षद्वीप



1. Andaman & Nicobar Islands

2. Arunachal Pradesh

3. Assam & Meghalaya

4. Nagaland, Manipur, Mizoram & Tripura

5. Sub-Himalayan West Bengal & Sikkim

6. Gangetic West Bengal

7. Odisha

8. Jharkhand

9. Bihar

10. East Uttar Pradesh

11. West Uttar Pradesh

12. Uttarakhand

13. Haryana, Chandigarh & Delhi

14. Punjab

15. Himachal Pradesh

16. Jammu & Kashmir and Ladakh

17. West Rajasthan

18. East Rajasthan

19. West Madhya Pradesh

20. East Madhya Pradesh

21. Gujarat

22. Saurashtra

23. Konkan & Goa

24. Madhya Maharashtra

25. Marathwada

26. Vidarbha

27. Chhattisgarh

28. Coastal Andhra Pradesh & Yanam

29. Telangana

30. Rayalaseema

31. Tamilnadu, Puducherry & Karaikal

32. Coastal Karnataka

33. North Interior Karnataka

34. South Interior Karnataka

35. Kerala & Mahe

36. Lakshadweep

SPATIAL DISTRIBUTION (% of Stations reporting)

% Stations	Category	% Stations	Category
76-100	Widespread (WS/Most Places)	26-50	Scattered (SCT/A Few Places)
51-75	Fairly Widespread (FWS/Many Places)	1-25	Isolated (ISOL)



Fog



Heavy Snow



Cold Wave



Heavy Rain



Dust Storm



Cold Day



Very Heavy Rain



Heat Wave



Ground Frost



Extremely Heavy Rain



Warm Night



Thunder & Lightning



Hot Day



Hailstorm



Hot & Humid



Dust Raising Winds



Strong Surface Winds

COLOUR CODED WARNING

No Warning (No Action)

Watch (Be Aware)

Alert (Be Prepared To Take Action)

Warning (Take Action)

Probabilistic Forecast

Terms	Probability of Occurrence (%)
Unlikely	< 25
Likely	25 - 50
Very Likely	50 - 75
Most Likely	> 75

* Red colour warning does not mean "Red Alert", Red colour warning means "Take Action".

Forecast and Warning for any day is valid from 0830 hours IST of day till 0830 hours IST of next day.

For more details, kindly visit <https://mausam.imd.gov.in> or contact: 011-2434-4599

(Service to the Nation since 1875)

DEFINITION/CRITERIA

Rain/ Snow *

Heavy: 64.5 to 115.5 mm/cm *
Very Heavy: 115.6 to 204.4 mm/cm *
Extremely Heavy: > 204.4 mm/cm *

Heat Wave

When maximum temperature of a station reaches $\geq 40^{\circ}\text{C}$ for plains and $\geq 30^{\circ}\text{C}$ for hilly regions
(a) Based on Departure from normal

Heat Wave: Maximum Temperature Departure from normal 4.5°C to 6.4°C .

Severe Heat Wave: Maximum Temperature Departure from normal $\geq 6.5^{\circ}\text{C}$

(b). Based on Actual maximum temperature

Heat Wave: When actual maximum temperature $\geq 45^{\circ}\text{C}$.

Severe Heat Wave: When actual maximum temperature $\geq 47^{\circ}\text{C}$.

(c). Criteria for heat wave for coastal stations

When maximum temperature departure is $> 4.5^{\circ}\text{C}$ from normal. Heat Wave may be described provided maximum temperature $\geq 37^{\circ}\text{C}$.

Warm Night

When maximum temperature remains 40°C

Warm Night: When minimum temperature departure 4.5°C to 6.4°C .

Severe Warm Night: When minimum temperature departure $> 6.4^{\circ}\text{C}$.

Cold Wave

When minimum temperature of a station $\leq 10^{\circ}\text{C}$ for plains and $\leq 0^{\circ}\text{C}$ for hilly regions.

(a). Based on departure

Cold Wave: Minimum Temperature Departure from normal -4.5°C to -6.4°C .

Severe Cold Wave: Minimum Temperature Departure from normal $\leq -6.5^{\circ}\text{C}$

(b) Based on actual Minimum Temperature (for Plains only)

Cold Wave: When Minimum Temperature is $\leq 4.0^{\circ}\text{C}$

Severe Cold Wave: When Minimum Temperature is $\leq 2.0^{\circ}\text{C}$

(c) For Coastal Stations

When Minimum Temperature departure is $\leq -4.5^{\circ}\text{C}$ & actual Minimum Temperature is $\leq 15^{\circ}\text{C}$

Cold Day

When minimum temperature of a station $\leq 10^{\circ}\text{C}$ for plains and $\leq 0^{\circ}\text{C}$ for hilly regions

Based on departure

Cold Day: Maximum Temperature Departure from normal -4.5°C to -6.4°C .

Severe Cold Day: Maximum Temperature Departure from normal $\leq -6.5^{\circ}\text{C}$

Fog

Phenomenon of small droplets suspended in air and the horizontal visibility $< 1\text{km}$

Moderate Fog: When the visibility between 500-200 metres

Dense Fog: when the visibility between 50- 200 metres

Very Dense Fog: when the visibility < 50 metres

Thunderstorm

Sudden electrical discharges manifested by a flash of light (Lightning) and a sharp rumbling sound (thunder)

Dust/Sand Storm

An ensemble of particles of dust or sand energetically lifted to great heights by a strong and turbulent wind.

Frost

Ice deposits on ground

Air temperature $\leq 4^{\circ}\text{C}$ (over Plains)

Squall

A strong wind that rises suddenly, lasts for atleast 1 minute.

Moderate: Wind speed 52-61 kmph

Severe: Wind speed 62-67 kmph

Very Severe: Wind speed > 67 kmph

Sea State

Effect of various waves in the sea over specific area

Rough to very rough: Wind speed 41-62 kmph (22-33 knots) & Wave height 2.5-6 metre

High to very high: Wind speed 63-117 kmph (34-63 knots) & Wave height 6-14 metre

Phenomenal: Wind speed > 117 kmph (> 63 knots) & Wave height > 14 metre

Cyclone

Cyclonic Storm: Wind speed 62-87 kmph (34-47 knots)

Severe Cyclonic Storm: Wind speed 88-117 kmph (48-63 knots)

Very Severe Cyclonic Storm: Wind speed 118-165 kmph (64 - 89 knots)

Extremely Severe Cyclonic Storm: Wind speed 166-220 kmph (90 -119 knots)

Super Cyclone Storm: Wind speed > 220 kmph (> 119 knots)

* Red colour warning does not mean "Red Alert", Red colour warning means "Take Action".

Forecast and Warning for any day is valid from 0830 hours IST of day till 0830 hours IST of next day.

For more details, kindly visit <https://mausam.imd.gov.in> or contact: 011-2434-4599

(Service to the Nation since 1875)

Hot and Humid: When maximum temperatures remain 3°C above normal along with the above normal relative humidity.