



Government of India  
Ministry of Earth Sciences  
India Meteorological Department



Press Release

Date: 02<sup>nd</sup> June, 2025

Time of Issue: 1345 hours IST

Subject: i) Heavy to very heavy rainfall likely to continue over Northeastern states till next 2 days and decrease in intensity thereafter

ii) Rainfall along with thunderstorm & gusty/squally winds likely to continue over northwest India during next 3 days.

**Southwest Monsoon: (Annexure I):**

- ❖ The Northern Limit of Monsoon continues to pass through 17.0°N/55°E, 17.5°N/60°E, 18°N/65°E, 18.5°N/70°E, Mumbai, Ahilyanagar, Adilabad, Bhawanipatna, Puri, Sandhead Island, 23.5°N/89.5°E, Balurghat, 30°N/85°E.

**Realised weather during past 24 hours till 0830 hours IST of today, the 02<sup>nd</sup> June, 2025 (Annexure II):**

- ❖ **Heavy to very heavy rainfall** recorded at isolated places over Nagaland and Sub-Himalayan West Bengal; **Heavy rainfall** at isolated places over, Meghalaya, Arunachal Pradesh, Nagaland, Mizoram, Tripura.
- ❖ **Thunderstorm accompanied with Squally/Gusty winds** with speed 70-100 kmph at isolated places over West Uttar Pradesh, Delhi, Assam & Meghalaya; with speed 40-70 kmph at isolated places over Jammu-Kashmir-Ladakh-Gilgit-Baltistan-Muzaffarabad, Himachal Pradesh, Uttarakhand, Punjab, Haryana, Chandigarh, East Uttar Pradesh, Gangetic West Bengal, Bihar, Jharkhand, Andaman & Nicobar Islands, Konkan & Goa, Madhya Maharashtra, Marathawada, Madhya Pradesh, Chhattisgarh, Arunachal Pradesh, Nagaland, Manipur, Mizoram & Tripura, Tamilnadu Puducherry & Karaikal, Kerala & Mahe, Interior Karnataka, Coastal Andhra Pradesh, Rayalaseema and Telangana.

For more details of realised weather, kindly refer **Annexure II**,

Detailed observations of Maximum Temperature during past 24 hours till 0830 hours IST of today are appended in **Annexure III**.

**i. Weather Systems, Forecast and Warnings (refer to Annexure IV & V):**

- ❖ The Western disturbance now seen as a cyclonic circulation over north Pakistan & adjoining Jammu in lower & middle tropospheric levels.
- ❖ An upper air cyclonic circulation lies over Haryana & neighbourhood in lower tropospheric levels.
- ❖ A north-south trough runs roughly along Long. 91°E to the north of Lat. 22°N in lower tropospheric levels.
- ❖ An upper air cyclonic circulation lies over east Bihar & neighbourhood in lower tropospheric levels.
- ❖ A trough runs from East Uttar Pradesh to northeast Assam across central parts of Bihar, Sub-Himalayan West Bengal & Sikkim and Assam in lower tropospheric levels.
- ❖ Under the influence of these systems, the following weather is likely:

**Northeast India:**

- ✓ Light/moderate rainfall at most places likely to continue over northeast India during next 7 days with isolated heavy to very heavy falls on 02<sup>nd</sup> & 3<sup>rd</sup> June and isolated heavy falls during subsequent 2 days.

**Northwest India:**

- ✓ Light/moderate rainfall at many/some places accompanied with **thunderstorm, lightning & gusty winds speed reaching 40-50 kmph** likely over Jammu-Kashmir-Ladakh-Gilgit-Baltistan-Muzaffarabad, Himachal Pradesh, Uttarakhand, Punjab, Haryana Chandigarh & Delhi; light/moderate rainfall at some/isolated places over Uttar Pradesh, Rajasthan on 02<sup>nd</sup> & 03<sup>rd</sup> June.
- ✓ **Thundersquall wind speed reaching 50-60 kmph gusting to 70 kmph** likely over Uttarakhand on 02<sup>nd</sup>; Punjab, Haryana Chandigarh & Delhi, West Uttar Pradesh, Rajasthan on 02<sup>nd</sup> & 03<sup>rd</sup> June.
- ✓ **Isolated heavy rainfall** also likely over Uttarakhand, Punjab, Haryana on 03<sup>rd</sup> June and over East Rajasthan on 02<sup>nd</sup> & 03<sup>rd</sup> June.
- ✓ **Dust storm** also very likely at isolated places over West Rajasthan on during 02-05 June.

#### East & Central India:

- ✓ Light/moderate rainfall at most/many places likely to continue over Sub-Himalayan West Bengal & Sikkim during next 7 days with isolated heavy rainfall on 02nd June.
- ✓ Light/moderate rainfall at some places accompanied with **thunderstorm, lightning & gusty winds speed reaching 40-50 kmph** likely over Madhya Pradesh, Vidarbha, Chhattisgarh during 02nd-06th; Bihar, West Bengal, Jharkhand during 02nd-04th June.
- ✓ **Thundersquall wind speed reaching 50-60 kmph gusting to 70 kmph** likely over West Madhya Pradesh on 03rd & 04th June.

#### South Peninsular India:

- ✓ Light/moderate rainfall at many places **over Kerala & Mahe, Coastal Karnataka during 02nd-04th June with isolated heavy rainfall** over Kerala & Mahe during 02nd-04th June.
- ✓ Light/moderate rainfall at some places accompanied with **thunderstorm, lightning & gusty winds speed reaching 30-40 kmph** over Coastal Andhra Pradesh, Telangana and Interior Karnataka during 02nd-04th June.

#### Maximum Temperature Forecast:

- ❖ No significant change in maximum temperatures likely over Northwest India during next 3 days; gradual rise by 3-5°C during subsequent next 4 days.
- ❖ No significant change in maximum temperatures likely over Central India during next 3 days; gradual rise by 2-4°C during subsequent next 4 days.
- ❖ Gradual rise by 3-4°C in maximum temperatures over East India during next 3 days and no large change thereafter.
- ❖ No significant change in maximum temperatures likely over rest parts of the country.

#### Hot & Humid warnings:

- ❖ **Hot & humid weather** is likely to prevail over Odisha during 02nd-06th; Gangetic West Bengal, Coastal Andhra Pradesh & Yanam, Tamilnadu Puducherry & Karaikal during 02nd-04th June.

#### FISHERMEN WARNINGS (Graphics in Annexure VI)

(A) **Fishermen are advised not to venture over** south and many parts of central Arabian Sea, over Lakshadweep area from 1130 IST of 02nd June to 0530 IST of 04th June; along and off Karnataka coast on 2nd June; off north Kerala, Karnataka coasts and over Lakshadweep area on 3rd June; over Gulf of Mannar from 1130 IST of 02nd June to 0530 IST of 04th June; along and off Somalia coasts and adjoining sea areas from 1130 IST of 02nd June to 0530 IST of 07th June.

(B) Fishermen are advised not to venture over many parts of central Bay of Bengal and adjoining parts of north Bay of Bengal from 0530 IST of 02nd June to 0530 IST of 04th June; over northern parts of central and adjoining parts of north Bay of Bengal on 04th June; off north Tamil Nadu coast on 04th June.

#### iv. Weather conditions and forecast over Delhi/NCR during 02nd June to 04th June, 2025 (Annexure VII)

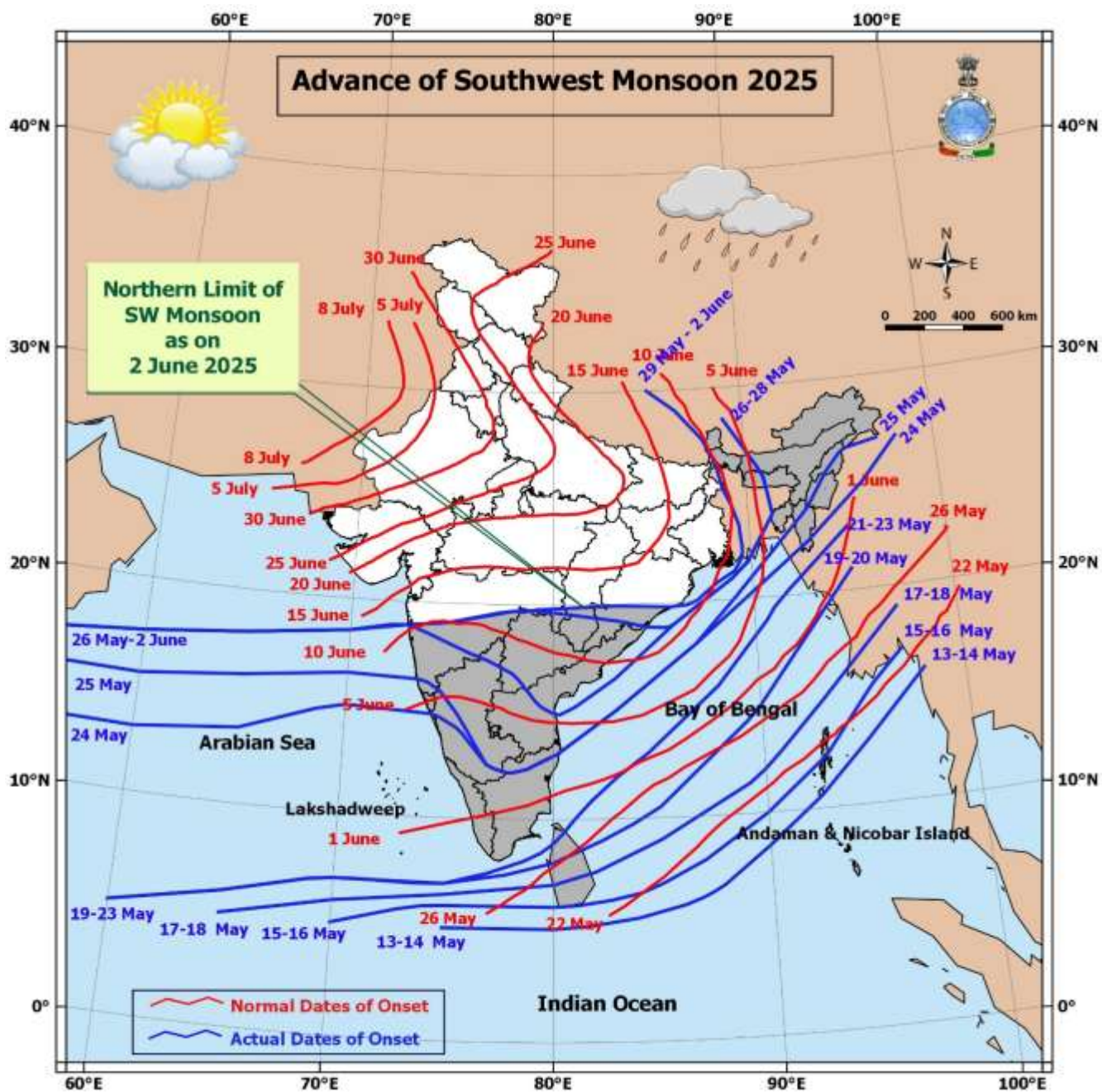
For more details, kindly refer National Weather Bulletin:

[https://mausam.imd.gov.in/responsive/all\\_india\\_forecast\\_bulletin.php](https://mausam.imd.gov.in/responsive/all_india_forecast_bulletin.php)

For District wise warnings refer: <https://mausam.imd.gov.in/responsive/districtWiseWarningGIS.php>

For Depression Bulletins refer:

[https://rsmcnewdelhi.imd.gov.in/uploads/archive/1/1\\_fba0b7\\_02.National%20Bulletin%20No%2002-24May2025\\_0830IST.pdf](https://rsmcnewdelhi.imd.gov.in/uploads/archive/1/1_fba0b7_02.National%20Bulletin%20No%2002-24May2025_0830IST.pdf)



**Significant weather reported during past 24 hours till 0830 hours IST of today:****Rainfall recorded (in cm) reported during past 24 hours till 0830 hours IST of today:**

- ❖ **Nagaland, Manipur, Mizoram & Tripura:** Zunheboto AWS (dist Zunheboto) 12; Aizawl (dist Aizawl) 8; Saiha (dist Saiha), Kailashahar AP (dist Unakoti), Sabroom (dist South Tripura) 7 Each;
- ❖ **Sub Himalayan West Bengal & Sikkim:** Nagarakata 13, Beech Tea Garden (dist Alipurduar) 10; Newlands Tea Garden (dist Alipurduar) 7;
- ❖ **Arunachal Pradesh:** Pasighat AP (dist East Siang), Passighat AWS (dist East Siang) 9 Each; Basar (dist West Siang) 8;
- ❖ **Assam & Meghalaya:** Panbari (dist Chirang) 8; Williamnagar (dist East Garo Hills), Ranganadi Nt Xing (dist Lakhimpur) 7 Each.

**Realised Gusty Winds (KMPH) During Past 24hours Ending At 0300 UTC Of Today I.E. 02.06.2025:**

- ❖ West Uttar Pradesh: Gautam Buddh Nagar 78, Ncmrwf(Aws) 61, Bulandshahar\_KVK 57, Bulandshahar (AWS)-54, Muzaffarnagar (AWS)-50, Bijnore-50, Aligarh (AWS)-48, Kasganj (AWS) 43, Bareilly (AWS) 43, Amooroha (AWS) 41, Hathras (AWS) 41, Mainpuri (AWS) 39, Agra (IAF) 37;
- ❖ Assam & Meghalaya: Margherita 72, Dhekiajuli\_AEGCL 44, Ghoramara\_AEGCL 37, Neriwalam 33;
- ❖ Haryana: Yamunanagar 61, Hisar 57, Sonipat & Panipat 46;
- ❖ East Madhya Pradesh: Singrauli 61;
- ❖ Bihar: Rajgir 57; Sipaya, Ziradei, Supaul 50; Bhagalpur 44; Sukhet, Agwanpur (43); Arwal, Arrabari (41); Madhepura (37); Bhojpur, East Champaran, Saraiya 33; Aurangabad, IIT Patna 31; Dumaraon, Barh, Manjhi, Bikramganj 30;
- ❖ East Uttar Pradesh: Prayagraj 57, Kanpur 52, Kushinagar 46, Jalaun 44, Dps\_Sangam\_Prayagraj 41, Kushinagar 41, Fatehpur 41, Mirzapur 39, Fursatganj 39, Integral University Lucknow 39;
- ❖ Marathwada: Dharashiv 57, Beed (Ambejogai) 54, Chhatrapati Sambhaji Nagar 50;
- ❖ Uttarakhand: Jollygrant 56, Pantnagar 33, Chamoli 43, Maldevta 43, Champawat 39, Ranichauri 39, Kapkot 37, Kosyakutoli 37, Pantnagar 37, Mohkampur-35, Roorkee 33, Matela-33, Hathibarkala 31, Bharsar 31;
- ❖ Jammu-Kashmir: Ramban 54, Kathua 35, Poonch 33, Chatha 28;
- ❖ West Madhya Pradesh: Ujjain 53;
- ❖ Chhattisgarh: Koriya 52;
- ❖ Jharkhand: Bokaro 52; Netarhat 43; Kiriburu 39; Garhwa 37; Kodarma, Ranchi 35; Gumla, Barhi, Khunti (33); Pakur (31); Chatra, Palamu (30);
- ❖ Himachal Pradesh: Bilaspur 52, Seobagh 46, Tabo 44, Neri 39, Kotkhai 37;
- ❖ Arunachal Pradesh: Shiyomi (lower tato) 50;
- ❖ Gangetic West Bengal: Berhampore 50; Gangasagar, Raidighi 31; Dum Dum 30;
- ❖ Konkan & Goa: Raigad (IIG\_Alibag) 50, Ratnagiri (Dapoli) 46, Sindhudurg (Devgad) 41;
- ❖ Madhya Maharashtra: Nashik (Kalwan) 50, Nashik (Vilholi) 48, Satara (BGRL\_Karad) 48;
- ❖ Andaman & Nicobar Islands: Sri Vijayapuram 48; Sri Vijayapuram - AWS 39; Shaheed Dweep 33;
- ❖ Nagaland, Manipur, Mizoram & Tripura: Champhai 44, Gokulpur 37;
- ❖ Punjab: Rupnagar 43, Pathankot & Patiala 37;

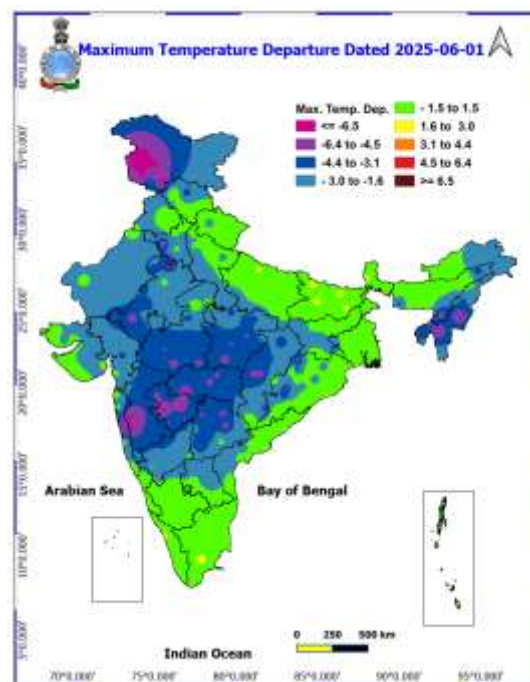
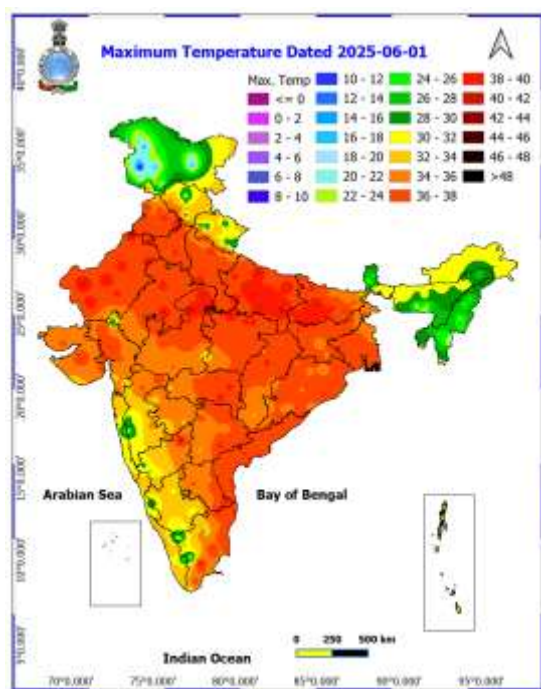


### Temperature observations during past 24 hours till 0830 hours IST of today:

- ❖ Yesterday, **Maximum Temperatures** were in the range of 38-42°C in many parts of Rajasthan, Jharkhand; in some parts of Madhya Pradesh, Uttar Pradesh, Tamil Nadu, Puducherry & Karaikal; in isolated parts of Punjab. Haryana-Chandigarh-Delhi, Chhattisgarh, Coastal Andhra Pradesh & Yanam; in the range 33-38°C in most parts of Marathwada; in many parts of Konkan & Goa, Bihar; in some parts of Odisha, Gangetic West Bengal, Rayalaseema, Telangana; in isolated parts of Gujarat state, Kerala & Mahe, Madhya Maharashtra and they were less than 33°C elsewhere over remaining parts of the country. Yesterday, the highest maximum temperature of 41.9°C was reported at Sri Ganganagar (West Rajasthan).
- ❖ Yesterday, Maximum Temperatures were markedly above normal(> 5.1°C) at few places over Punjab; appreciably above normal(3.1°C to 5.0°C) at isolated places over Sub Himalayan West Bengal & Sikkim, Odisha, West Uttar Pradesh and Himachal Pradesh; above normal(1.6°C to 3.0°C) at few places over Gangetic West Bengal and Bihar; at isolated places over Assam & Meghalaya, East Uttar Pradesh, East Madhya Pradesh, Coastal Andhra Pradesh & Yanam, Tamil Nadu, Puducherry & Karaikal and Kerala & Mahe and near normal(-1.5°C to 1.5°C) at many places over Andaman & Nicobar Islands, Uttarakhand, Saurashtra & Kutch, Konkan & Goa and South Interior Karnataka; at most places over Arunachal Pradesh, Coastal Karnataka and Lakshadweep; at few places over Haryana - Chandigarh-Delhi, West Rajasthan, Gujarat Region and Rayalaseema; at isolated places over East Rajasthan, West Madhya Pradesh, Telangana and North Interior Karnataka.

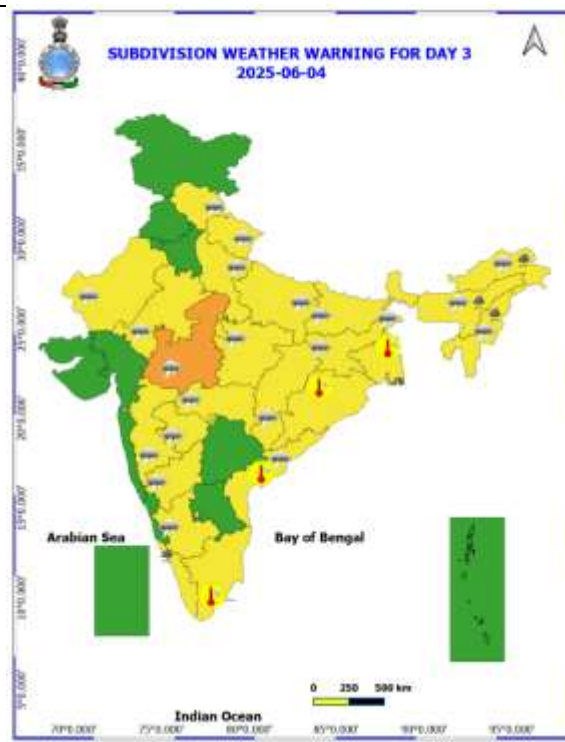
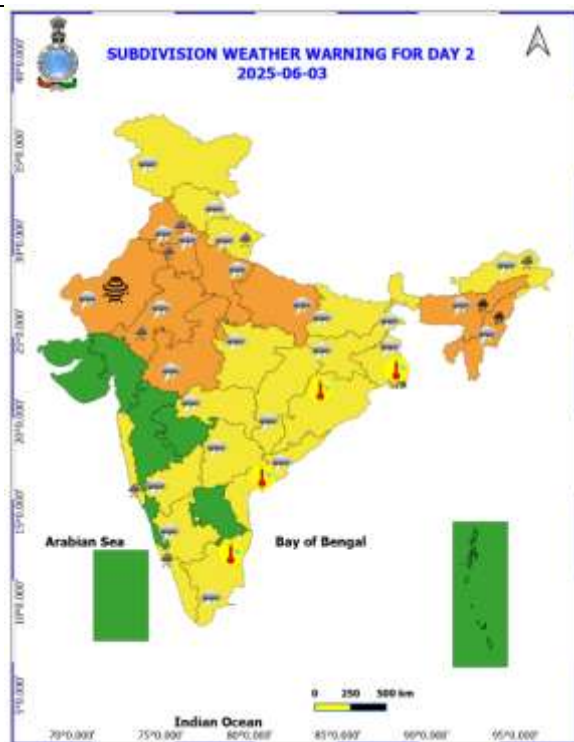
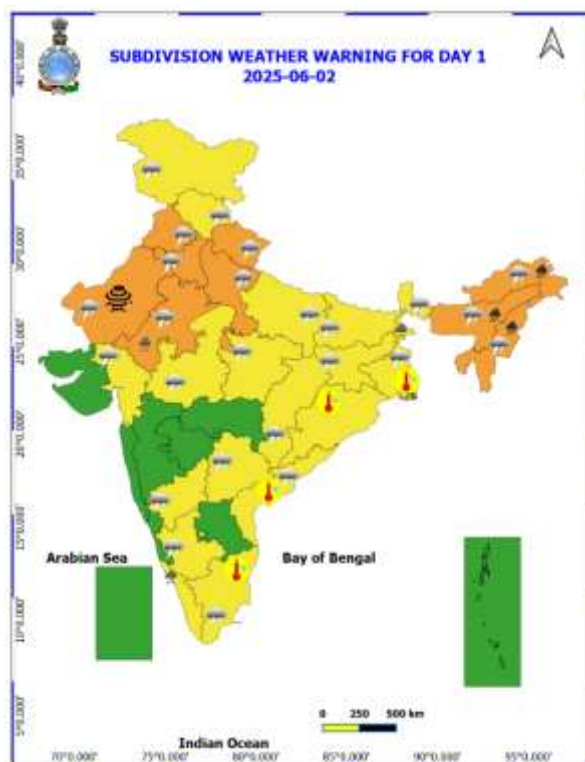
Fig.1: Maximum Temperatures

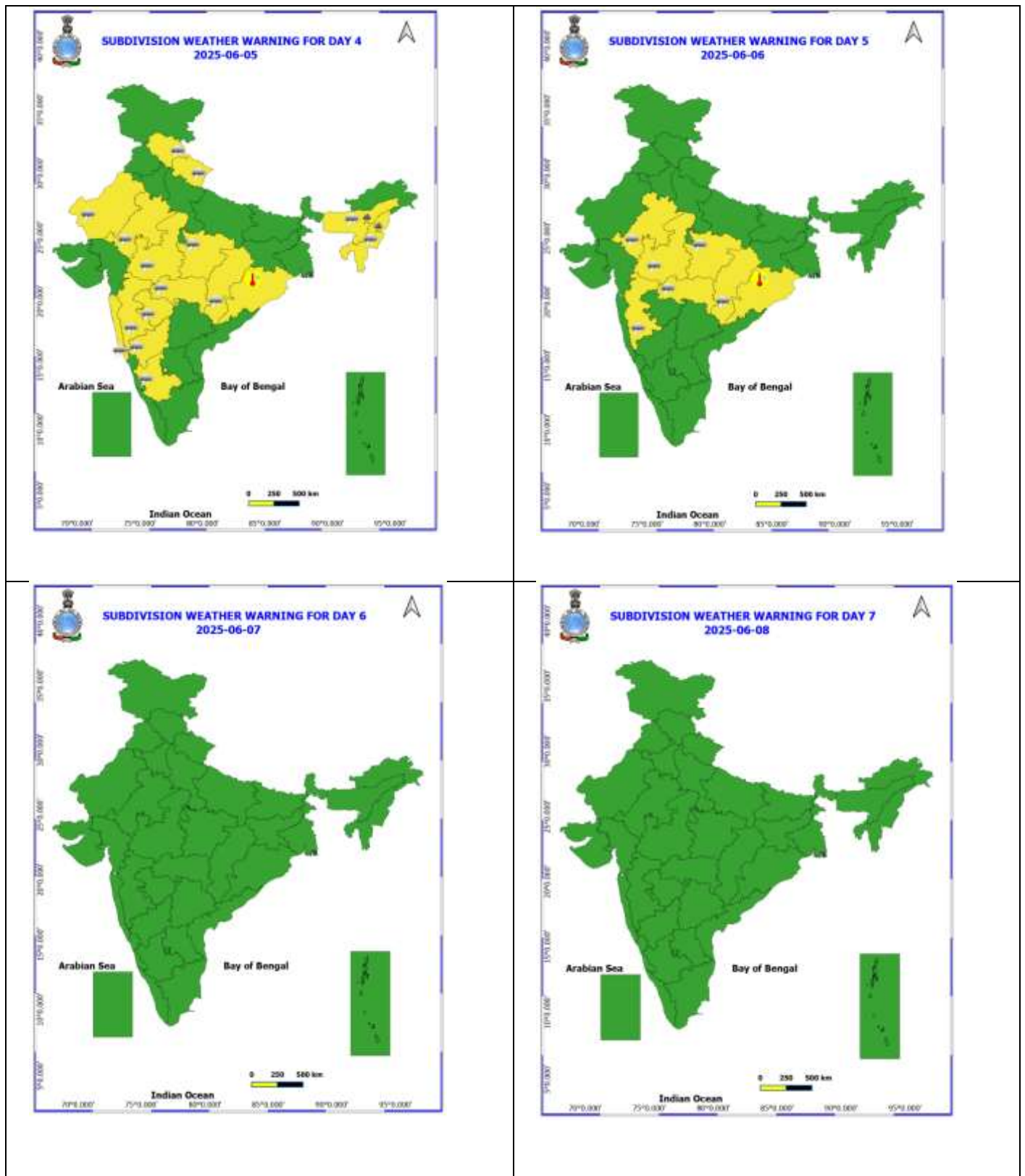
Fig.2: Departure of Maximum Temperatures



7 Days Rainfall Forecast								
S. No.	Subdivision	02-Jun	03-Jun	04-Jun	05-Jun	06-Jun	07-Jun	08-Jun
		Day 1	Day 2	Day 3	Day 4	Day 5	Day 6	Day 7
1	ANDAMAN & NICOBAR ISLANDS	WS	FWS	FWS	WS	WS	WS	WS
2	ARUNACHAL PRADESH	WS	WS	FWS	FWS	FWS	FWS	FWS
3	ASSAM & MEGHALAYA	WS	WS	WS	WS	FWS	FWS	FWS
4	NAGALAND, MANIPUR, MIZORAM & TRIPURA	WS	WS	WS	WS	FWS	FWS	FWS
5	SUB-HIMALAYAN WEST BENGAL & SIKKIM	WS	WS	WS	FWS	FWS	FWS	FWS
6	GANGETIC WEST BENGAL	ISOL	ISOL	ISOL	SCT	ISOL	ISOL	ISOL
7	ODISHA	ISOL	ISOL	ISOL	ISOL	ISOL	ISOL	ISOL
8	JHARKHAND	ISOL	ISOL	ISOL	ISOL	DRY	DRY	DRY
9	BIHAR	ISOL	ISOL	ISOL	ISOL	DRY	DRY	ISOL
10	EAST UTTAR PRADESH	ISOL	SCT	ISOL	DRY	DRY	DRY	DRY
11	WEST UTTAR PRADESH	SCT	SCT	ISOL	ISOL	DRY	DRY	DRY
12	UTTARAKHAND	SCT	FWS	SCT	ISOL	ISOL	DRY	DRY
13	HARYANA CHANDIGARH & DELHI	SCT	FWS	ISOL	DRY	DRY	DRY	DRY
14	PUNJAB	SCT	FWS	ISOL	DRY	DRY	DRY	DRY
15	HIMACHAL PRADESH	SCT	FWS	FWS	SCT	ISOL	ISOL	DRY
16	JAMMU & KASHMIR AND LADAKH	FWS	FWS	SCT	ISOL	DRY	DRY	DRY
17	WEST RAJASTHAN	ISOL	SCT	ISOL	ISOL	DRY	DRY	DRY
18	EAST RAJASTHAN	SCT	SCT	ISOL	ISOL	ISOL	ISOL	ISOL
19	WEST MADHYA PRADESH	ISOL	SCT	SCT	ISOL	ISOL	ISOL	ISOL
20	EAST MADHYA PRADESH	ISOL	ISOL	SCT	ISOL	ISOL	ISOL	ISOL
21	GUJARAT REGION	SCT	SCT	SCT	ISOL	ISOL	ISOL	ISOL
22	SAURASHTRA & KUTCH	ISOL	ISOL	ISOL	ISOL	ISOL	ISOL	ISOL
23	KONKAN & GOA	FWS	FWS	SCT	ISOL	ISOL	ISOL	SCT
24	MADHYA MAHARASHTRA	ISOL	ISOL	ISOL	ISOL	ISOL	ISOL	ISOL
25	MARATHAWADA	ISOL	ISOL	ISOL	ISOL	ISOL	ISOL	ISOL
26	VIDARBHA	ISOL	ISOL	ISOL	ISOL	ISOL	ISOL	ISOL
27	CHHATTISGARH	ISOL	ISOL	ISOL	ISOL	ISOL	ISOL	ISOL
28	COASTAL ANDHRA PRADESH & YANAM	ISOL	ISOL	ISOL	ISOL	ISOL	ISOL	ISOL
29	TELANGANA	ISOL	ISOL	ISOL	ISOL	ISOL	ISOL	ISOL
30	RAYALASEEMA	ISOL	ISOL	ISOL	ISOL	ISOL	ISOL	ISOL
31	TAMILNADU PUDUCHERRY & KARAIKAL	ISOL	ISOL	ISOL	ISOL	ISOL	ISOL	ISOL
32	COASTAL KARNATAKA	WS	WS	WS	FWS	SCT	SCT	SCT
33	NORTH INTERIOR KARNATAKA	ISOL	ISOL	ISOL	ISOL	ISOL	ISOL	ISOL
34	SOUTH INTERIOR KARNATAKA	ISOL	ISOL	SCT	SCT	ISOL	ISOL	ISOL
35	KERALA & MAHE	FWS	WS	FWS	SCT	SCT	SCT	SCT
36	LAKSHADWEEP	FWS	FWS	FWS	SCT	SCT	SCT	SCT

- As the lead period increases forecast accuracy decreases.





- Action may be taken based on ORANGE AND REDCOLOUR warnings.
- Vulnerable regions likely urban and hilly areas action may be initiated for heavy rainfall warning.
- As the lead period increases forecast accuracy decreases.

Detailed districtwise MultiHazard weather warning for next five days available at  
<https://mausam.imd.gov.in/responsive/districtWiseWarningGIS.php>





### Fishermen Warning Graphics

**Day 1: 02.06.2025/11:30AM to 03.06.2025/05:30AM**



**Day 2: 03.06.2025/05:30AM to 04.06.2025/05:30AM**



**Day 3: 04.06.2025/05:30AM to 05.06.2025/05:30AM**



**Day 4: 05.06.2025/05:30AM to 06.06.2025/05:30AM**



**Day 5: 06.06.2025/05:30AM to 07.06.2025/05:30AM**



Squally Weather with wind speed 35-45 kmph gusting to 55 kmph

Squally wind with speed 45-55 kmph gusting to 65 kmph

**Fishermen are advised not to venture into the marked areas.**

## Flash Flood Guidance

Persistent Flash Flood Threat (PFFT) till 1730 IST of 02-06-2025 :

No Flash flood threat likely in next 06 hours.



24 hours Outlook for the Flash Flood Risk (FFR) till 1130 IST of 03-06-2025 :

Low to Moderate flash flood risk likely over few watersheds & neighbourhoods of following Met Sub-divisions during next 24 hours.

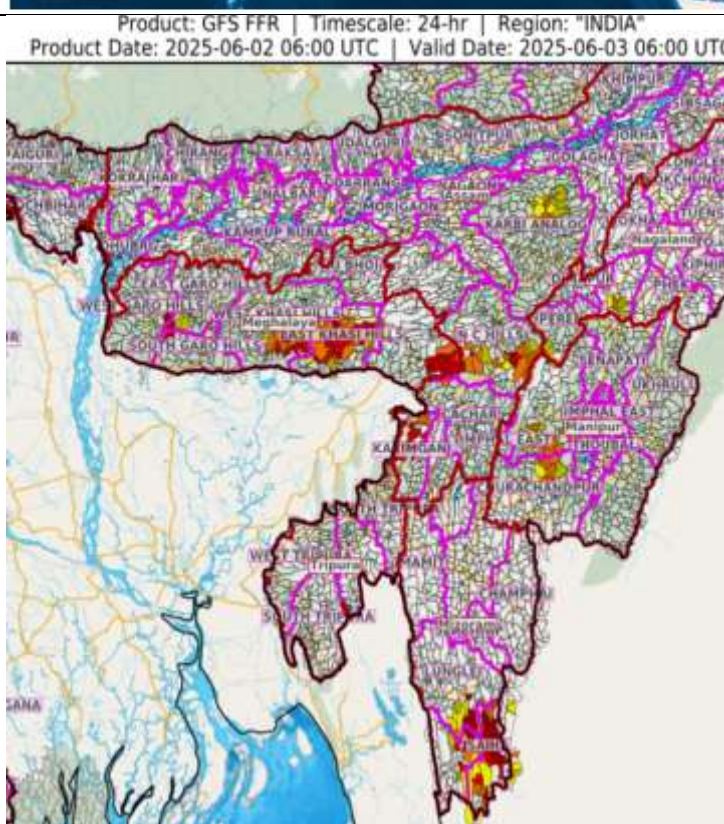
Assam & Meghalaya - Cachar, Karbi Analog, N.C Hills, Karimganj, East Garo Hills, East Khasi Hills, South Garo Hills, West Garo Hills, West Khasi Hills and Jaintia Hills districts.

Nagaland Mizoram Manipur Tripura (NMMT) –

Mizoram - Lawngtlai, Lunglei and Saiha districts.

Manipur - Churachandpur, Senapati and Tamenglong districts.

Surface runoff/Inundation may occur at some fully saturated soils & low-lying areas over Area of Concern (AoC) as shown in map due to expected rainfall occurrence in next 24 hours.



**Weather forecast over Delhi/NCR during 02<sup>nd</sup> to 05<sup>th</sup> June 2025****Past Weather:**

There has been a fall in the minimum temperature upto 4°C and fall in the maximum temperature upto 2°C over Delhi/NCR during the past 24 hours. The maximum and minimum temperatures over Delhi were around 37 to 38°C and 20 to 24°C respectively. The minimum temperature was below normal up to 4 to 6°C and the maximum temperature was below normal up to 2 to 3°C. Partly cloudy sky conditions with predominant surface wind from the southwest direction with wind speeds up to 18 kmph gusting to 70 kmph prevailed during the past 24 hours. Partly cloudy sky conditions with wind speed less than 06 kmph from the variable direction prevailed over the region in the forenoon today.

**Weather Forecast:**

**02.06.2025:** Partly cloudy sky. Very light to light rain accompanied by thunderstorm and gusty winds (speed 40 – 50 kmph) temporarily reaching 60 kmph during thunderstorm with dust rising winds towards evening/night. The maximum temperatures over Delhi are likely to be in the range of 36 to 38°C. The maximum temperature will be below normal up to 2 to 4°C. The predominant surface wind will likely be from the southwest direction with a wind speed of less than 25 kmph in the afternoon. The wind speed will gradually decrease becoming 10-15 kmph from the southwest direction during evening and night.

**03.06.2025:** Generally cloudy sky. Very light to light rain accompanied by thunderstorm and gusty winds (speed 40 – 50 kmph) temporarily reaching 60 kmph during thunderstorm with dust rising winds. The maximum and minimum temperatures over Delhi are likely to be in the range of 35 to 37°C and 22 to 24°C respectively. The minimum temperature will be below normal up to 3 - 5°C and the maximum temperature will be below normal up to 3 to 5°C. The predominant surface wind will likely be from the southwest direction with a wind speed of less than 15 kmph during the morning hours. The wind speed will gradually increase becoming 20-25 kmph from the southwest direction in the afternoon. It will decrease becoming less than 15 kmph from the southeast direction during evening and night.

**04.06.2025:** Generally cloudy sky. Very light to light rain accompanied by thunderstorm and gusty winds (speed 40 – 50 kmph) temporarily reaching 60 kmph during thunderstorm with dust rising winds. The maximum and minimum temperatures over Delhi are likely to be in the range of 34 to 36°C and 22 to 24°C respectively. The minimum temperature will be below normal up to 3 - 5°C and the maximum temperature will be below normal up to 4 - 6°C. The predominant surface wind will likely be from the west direction with a wind speed of less than 15 kmph during the morning hours. The wind speed will gradually increase becoming less than 18 kmph from the northwest direction in the afternoon. It will decrease to less than 12 kmph from the northwest direction during the evening and night.

**05.06.2025:** Partly cloudy sky. The maximum and minimum temperatures over Delhi are likely to be in the range of 37 to 39°C and 24 to 26°C respectively. The minimum temperature will be below normal up to 1 - 2°C, and the maximum temperature will be below normal up to 1 - 3°C. The predominant surface wind will likely be from the northwest direction with a wind speed of less than 20 kmph during the morning hours. The wind speed will gradually increase becoming less than 25 kmph from the northwest direction in the afternoon. It will decrease to less than 20 kmph from the northwest direction during the evening and night.

**Impact expected and Action Suggested due to thunderstorm with lightning/gusty winds:**

- Be cautious and take precautionary measures, though there is the likelihood of thunderstorm/lightning and gusty winds (speed 40 – 50 kmph) temporarily reaching 60 kmph during thunderstorm with dust rising surface winds.
- Breaking of tree branches, uprooting of large avenue trees, Large dead limbs blown from trees, Damage to standing crops, Minor to major damage to power and communication lines due to breaking of branches, Partial damage to vulnerable structures due to strong winds, Loose objects may fly.
- People are advised to keep a watch on the weather for worsening conditions and be ready to move to safer places accordingly, stay indoors, close windows & doors and avoid travel if possible, take safe shelters; do not take shelter under trees, do not lie on concrete floors and do not lean against concrete walls, unplug electrical/ electronic appliances, immediately get out of water bodies, keep away from all the objects that conduct electricity.



**Impact & Action Suggested due to heavy to very heavy rainfall over Arunachal Pradesh on 02nd; Assam & Meghalaya and Mizoram on 02nd & 03rd June. (For Orange colour warning areas)**

**Impact Expected**

- ❖ Localized Flooding of roads, water logging in low lying areas of the above region.
- ❖ Occasional reduction in visibility due to heavy rainfall.
- ❖ Minor damage to kutchra roads.
- ❖ Possibilities of damage to vulnerable structure.
- ❖ Localized Landslides/Mudslides
- ❖ Damage to horticulture and standing crops in some areas due to inundation.
- ❖ It may lead to riverine flooding in some river catchments (for riverine flooding please visit Web page of CWC).

**Action Suggested**

- ❖ Check for traffic congestion on your route before leaving for your destination.
- ❖ Follow any traffic advisories that are issued in this regard.
- ❖ Avoid going to areas that face the water logging problems often.
- ❖ Avoid staying in vulnerable structure.

**Impact expected and action suggested due to isolated thunderstorm with lightning/gusty & Squally winds over Thundersquall wind speed reaching 50-60 kmph gusting to 70 kmph over likely over Punjab, Haryana Chandigarh & Delhi, West Uttar Pradesh, Rajasthan on 02nd & 03rd, Uttarakhand on 02nd and West Madhya Pradesh on 03rd & 04th June.**

**Impact expected:**

- Minor to Major damage to banana and papaya trees.
- Strong wind/hail may damage plantation, horticulture and standing crops.
- Partial damage to vulnerable structures due to strong winds.
- Minor damage to kutchra houses/walls and huts.
- Loose objects may fly.

**Action suggested:**

- People are advised to keep a watch on the weather for worsening conditions and be ready to move to safer places accordingly.
- Stay indoors, close windows & doors and avoid travel if possible.
- Take safe shelters; do not take shelter under trees.
- Do not lie on concrete floors and do not lean against concrete walls.
- Unplug electrical/ electronic appliances.
- Immediately get out of water bodies.
- Keep away from all the objects that conduct electricity.

**Agromet advisories for likely impact of Heavy Rainfall / Hailstorms / Gusty Winds / Heat Wave**

- Postpone transplanting of rice in **Arunachal Pradesh**; sowing of *Sali* rice and vegetables in **Assam**; sowing of finger millet, maize and black gram in **Manipur** and harvesting of rice in **Tripura**.
- Drain out excess water and ensure proper drainage in the rice nursery beds, fields of soybean, chilli, okra and other vegetables and in **Arunachal Pradesh**; rice, sesame, maize, sugarcane, ginger and turmeric in **Assam**; bottle gourd and French bean in **Meghalaya**; maize and upland rice in **Mizoram**; pre-*kharif* rice, soybean, finger millet, maize, black gram, vegetables and orchards in **Manipur**; cabbage, maize and orchards in **Nagaland**; rice fields, *Aus* rice nurseries and vegetables in **Tripura** and Dalley Khorsani and tomato in **Sub Himalayan West Bengal**.
- Shift the harvested produce in safer places or cover the produce with tarpaulin sheets in the fields. Tie the harvested crops properly and cover them to minimise the risk of displacement due to strong surface winds.
- Provide mechanical support and propping to horticultural crops and staking to vegetables to avoid lodging.

**Livestock / Poultry / Fishery**

- Keep the animals inside the shed during heavy rainfall and provide them balanced feed.
- Store feed and fodder in a safe place to prevent spoilage.
- Construct an outlet with proper netting around the ponds to drain out excess water, thereby preventing fish from escaping in case of overflow.

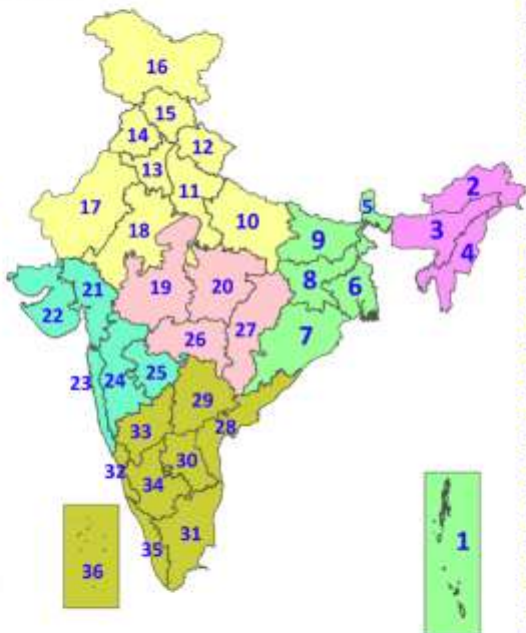


### Legends & abbreviations:

- ❖ **Heavy Rain:** 64.5-115.5mm; **Very Heavy Rain:** 115.6-204.4mm; **Extremely Heavy Rain:** >204.4mm.
- ❖ **Obsy:** Observatory; **:** Automatic Weather Station; **ARG:** Automatic Rain Gauge; **dist:** District; **NH:** National Highway; **KVK:** Krishi Vigyan Kendra; **DVC:** Damodar Valley Corporation; **PTO:** Part Time Office, **Aero:** Aerodrome, **IAF:** Indian Air Force.
- ❖ **Region wise classification of meteorological Sub-Divisions:**
  - **Northwest India:** Western Himalayan Region (Jammu-Kashmir-Ladakh-Gilgit-Baltistan-Muzaffarabad, Himachal Pradesh and Uttarakhand); Punjab, Haryana-Chandigarh-Delhi; West Uttar Pradesh, East Uttar Pradesh, West Rajasthan and East Rajasthan.
  - **Central India:** West Madhya Pradesh, East Madhya Pradesh, Vidarbha and Chhattisgarh.
  - **East India:** Bihar, Jharkhand, Sub-Himalayan West Bengal & Sikkim; Gangetic West Bengal, Odisha and Andaman & Nicobar Islands.
  - **Northeast India:** Arunachal Pradesh, Assam & Meghalaya and Nagaland, Manipur, Mizoram & Tripura.
  - **West India:** Gujarat Region, Saurashtra & Kutch, Konkan & Goa, Madhya Maharashtra and Marathawada.
  - **South India:** Coastal Andhra Pradesh & Yanam, Telangana, Rayalaseema, Coastal Karnataka, North Interior Karnataka, South Interior Karnataka, Kerala & Mahe, Tamil Nadu, Puducherry & Karaikal and Lakshadweep.

## LEGENDS

1. अंडमान और निकोबार द्वीपसमूह
2. अरुणाचल प्रदेश
3. असम और मेघालय
4. नागालैंड, मणिपुर, मिजोरम और त्रिपुरा
5. उप-हिमालयी पश्चिम बंगाल और सिक्किम
6. गंगीय पश्चिम बंगाल
7. ओडिशा
8. झारखंड
9. बिहार
10. पूर्वी उत्तर प्रदेश
11. पश्चिम उत्तर प्रदेश
12. उत्तराखंड
13. हरियाणा, चंडीगढ़ और दिल्ली
14. पंजाब
15. हिमाचल प्रदेश
16. जम्मू और कश्मीर और लद्दाख
17. पश्चिम राजस्थान
18. पूर्वी राजस्थान
19. पश्चिम मध्य प्रदेश
20. पूर्वी मध्य प्रदेश
21. गुजरात
22. सौराष्ट्र
23. कोंकण और गोवा
24. मध्य महाराष्ट्र
25. मराठवाड़ा
26. विदर्भ
27. छत्तीसगढ़
28. तटीय आंध्र प्रदेश और यनम
29. तेलंगाना
30. रायलसीमा
31. तमिलनाडु, पुडुचेरी और कराईकल
32. तटीय कर्नाटक
33. आंतरिक उत्तरी कर्नाटक
34. आंतरिक दक्षिणी कर्नाटक
35. केरल और माहे
36. लक्षद्वीप



1. Andaman & Nicobar Islands
2. Arunachal Pradesh
3. Assam & Meghalaya
4. Nagaland, Manipur, Mizoram & Tripura
5. Sub-Himalayan West Bengal & Sikkim
6. Gangetic West Bengal
7. Odisha
8. Jharkhand
9. Bihar
10. East Uttar Pradesh
11. West Uttar Pradesh
12. Uttarakhand
13. Haryana, Chandigarh & Delhi
14. Punjab
15. Himachal Pradesh
16. Jammu & Kashmir and Ladakh
17. West Rajasthan
18. East Rajasthan
19. West Madhya Pradesh
20. East Madhya Pradesh
21. Gujarat
22. Saurashtra
23. Konkan & Goa
24. Madhya Maharashtra
25. Marathwada
26. Vidarbha
27. Chhattisgarh
28. Coastal Andhra Pradesh & Yanam
29. Telangana
30. Rayalaseema
31. Tamilnadu, Puducherry & Karaikal
32. Coastal Karnataka
33. North Interior Karnataka
34. South Interior Karnataka
35. Kerala & Mahe
36. Lakshadweep

## SPATIAL DISTRIBUTION (% of Stations reporting)

% Stations	Category	% Stations	Category
76-100	Widespread (WS/Most Places)	26-50	Scattered (SCT/A Few Places)
51-75	Fairly Widespread (FWS/Many Places)	1-25	Isolated (ISOL)



Fog



Heavy Snow



Cold Wave



Heavy Rain



Dust Storm



Cold Day



Very Heavy Rain



Heat Wave



Ground Frost



Extremely Heavy Rain



Warm Night



Thunder & Lightning



Hot Day



Hailstorm



Hot & Humid



Dust Raising Winds



Strong Surface Winds

### COLOUR CODED WARNING

No Warning (No Action)
Watch (Be Aware)
Alert (Be Prepared To Take Action)
Warning (Take Action)

### Probabilistic Forecast

Terms	Probability of Occurrence (%)
Unlikely	< 25
Likely	25 - 50
Very Likely	50 - 75
Most Likely	> 75

\* Red colour warning does not mean "Red Alert", Red colour warning means "Take Action".

Forecast and Warning for any day is valid from 0830 hours IST of day till 0830 hours IST of next day.

For more details, kindly visit <https://mausam.imd.gov.in> or contact: 011-2434-4599

(Service to the Nation since 1875)



## DEFINITION/CRITERIA

### Rain/ Snow \*

Heavy: 64.5 to 115.5 mm/cm \*  
Very Heavy: 115.6 to 204.4 mm/cm \*  
Extremely Heavy: > 204.4 mm/cm \*

### Heat Wave

When maximum temperature of a station reaches  $\geq 40^{\circ}\text{C}$  for plains and  $\geq 30^{\circ}\text{C}$  for hilly regions

(a) Based on Departure from normal

Heat Wave: Maximum Temperature Departure from normal  $4.5^{\circ}\text{C}$  to  $6.4^{\circ}\text{C}$ .

Severe Heat Wave: Maximum Temperature Departure from normal  $\geq 6.5^{\circ}\text{C}$

(b). Based on Actual maximum temperature

Heat Wave: When actual maximum temperature  $\geq 45^{\circ}\text{C}$ .

Severe Heat Wave: When actual maximum temperature  $\geq 47^{\circ}\text{C}$ .

(c). Criteria for heat wave for coastal stations

When maximum temperature departure is  $> 4.5^{\circ}\text{C}$  from normal. Heat Wave may be described provided maximum temperature  $\geq 37^{\circ}\text{C}$ .

### Warm Night

When maximum temperature remains  $40^{\circ}\text{C}$

Warm Night: When minimum temperature departure  $4.5^{\circ}\text{C}$  to  $6.4^{\circ}\text{C}$ .

Severe Warm Night: When minimum temperature departure  $> 6.4^{\circ}\text{C}$ .

### Cold Wave

When minimum temperature of a station  $\leq 10^{\circ}\text{C}$  for plains and  $\leq 0^{\circ}\text{C}$  for hilly regions.

(a). Based on departure

Cold Wave: Minimum Temperature Departure from normal  $-4.5^{\circ}\text{C}$  to  $-6.4^{\circ}\text{C}$ .

Severe Cold Wave: Minimum Temperature Departure from normal  $\leq -6.5^{\circ}\text{C}$

(b) Based on actual Minimum Temperature (for Plains only)

Cold Wave: When Minimum Temperature is  $\leq 4.0^{\circ}\text{C}$

Severe Cold Wave: When Minimum Temperature is  $\leq 2.0^{\circ}\text{C}$

(c) For Coastal Stations

When Minimum Temperature departure is  $\leq -4.5^{\circ}\text{C}$  & actual Minimum Temperature is  $\leq 15^{\circ}\text{C}$

### Cold Day

When minimum temperature of a station  $\leq 10^{\circ}\text{C}$  for plains and  $\leq 0^{\circ}\text{C}$  for hilly regions

Based on departure

Cold Day: Maximum Temperature Departure from normal  $-4.5^{\circ}\text{C}$  to  $-6.4^{\circ}\text{C}$ .

Severe Cold Day: Maximum Temperature Departure from normal  $\leq -6.5^{\circ}\text{C}$

### Fog

Phenomenon of small droplets suspended in air and the horizontal visibility  $< 1\text{km}$

Moderate Fog: When the visibility between 500-200 metres

Dense Fog: when the visibility between 50- 200 metres

Very Dense Fog: when the visibility  $< 50$  metres

### Thunderstorm

Sudden electrical discharges manifested by a flash of light (Lightning) and a sharp rumbling sound (thunder)

### Dust/Sand Storm

An ensemble of particles of dust or sand energetically lifted to great heights by a strong and turbulent wind.

### Frost

Ice deposits on ground

Air temperature  $\leq 4^{\circ}\text{C}$  ( over Plains)

### Squall

A strong wind that rises suddenly, lasts for atleast 1 minute.

Moderate: Wind speed 52-61 kmph

Severe: Wind speed 62-87 kmph

Very Severe: Wind speed  $> 87$  kmph

### Sea State

Effect of various waves in the sea over specific area

Rough to very rough: Wind speed 41-62 kmph (22-33 knots) & Wave height 2.5-6 metre

High to very high: Wind speed 63-117 kmph (34-63 knots) & Wave height 6-14 metre

Phenomenal: Wind speed  $> 117$  kmph ( $> 63$  knots) & Wave height  $> 14$  metre

### Cyclone

Cyclonic Storm: Wind speed 62-87 kmph (34-47 knots)

Severe Cyclonic Storm: Wind speed 88-117 kmph (48-63 knots)

Very Severe Cyclonic Storm: Wind speed 118-165 kmph (64 - 89 knots)

Extremely Severe Cyclonic Storm: Wind speed 166-220 kmph (90 -119 knots)

Super Cyclone Storm: Wind speed  $> 220$  kmph ( $> 119$  knots)

\* Red colour warning does not mean "Red Alert", Red colour warning means "Take Action".

Forecast and Warning for any day is valid from 0830 hours IST of day till 0830 hours IST of next day.

For more details, kindly visit <https://mausam.imd.gov.in> or contact: 011-2434-4599

(Service to the Nation since 1875)

**Hot and Humid:** When maximum temperatures remain  $3^{\circ}\text{C}$  above normal along with the above normal relative humidity.