



Government of India
Ministry of Earth Sciences
India Meteorological Department



Press Release

Date: 09th June, 2025

Time of Issue: 1415 hours IST

Subject: i) Monsoon likely to be active over south peninsular India with heavy to very heavy rainfall and isolated extremely heavy falls over Karnataka during 12th -15th and over Konkan & Goa during 13th-15th June.
(ii) Heat Wave conditions are likely to prevail over Northwest India during next 4-5 days.

Southwest Monsoon: (Annexure I):

The Northern Limit of Monsoon continues to pass through 17.0°N/55°E, 17.5°N/60°E, 18°N/65°E, 18.5°N/70°E, Mumbai, Ahilyanagar, Adilabad, Bhawanipatna, Puri, Sandhead Island, 23.5°N/89.5°E, Balurghat, 30°N/85°E.

Realised weather during past 24 hours till 0830 hours IST of today, the 09th June, 2025 (Annexure II):

- ❖ **Heat wave conditions** prevailed at many places with **severe heat wave conditions** at isolated places over West Rajasthan; Heat wave conditions at isolated places over Jammu & Kashmir.
- ❖ **Heavy to very heavy rainfall** has been recorded at isolated places over Marathawada, South Interior Karnataka; **Heavy rainfall** at isolated places over Mizoram, Goa, Tamil Nadu, Kerala, Coastal Karnataka, North Interior Karnataka, Telangana, Rayalaseema.
- ❖ **Thunderstorm accompanied with Squally/Gusty winds** with speed 30-70 kmph at isolated places over Tamil Nadu Puducherry & Karaikal, Marathawada, Jammu -Kashmir, Vidarbha, West Madhya Pradesh, West Rajasthan, Andaman & Nicobar Islands, Madhya Maharashtra, Himachal Pradesh and Odisha.

For more details of realised weather, kindly refer **Annexure II**,

Detailed observations of Maximum Temperature during past 24 hours till 0830 hours IST of today are appended in **Annexure III**.

i. Weather Systems, Forecast and Warnings (refer to Annexure IV & V):

- ❖ An **upper air cyclonic circulation** lies over northwest Uttar Pradesh in lower tropospheric levels and a **trough** runs from this cyclonic circulation to Telangana in lower tropospheric levels.
- ❖ A **Western Disturbance** seen as a trough in middle tropospheric westerlies with its axis at 5.8 km above mean sea level roughly along Long. 58°E to the north of Lat. 25°N.
- ❖ An **upper air cyclonic circulation** lies over Southeast & adjoining eastcentral Bay of Bengal in middle tropospheric levels.
- ❖ A **trough** runs from north Tamil Nadu to south Maharashtra coast in lower & middle tropospheric levels.
- ❖ An **upper air cyclonic circulation** lies over northwest Bay of Bengal and adjoining north coastal Odisha & south Gangetic West Bengal in lower & middle tropospheric levels.
- ❖ Under the influence of these systems, the following weather is likely:

South Peninsular India:

- ✓ Light/moderate rainfall at most/many places over Kerala & Mahe, Karnataka, Lakshadweep during next 7 days and Light/moderate rainfall at many/some places accompanied with isolated **thunderstorm, lightning & gusty winds speed reaching 30-50 kmph** over Tamil Nadu, Puducherry & Karaikal, Rayalaseema, Telangana during 09th-13th June with **Thundersquall (wind speed reaching 50-60 kmph gusting to 70 kmph)** very

likely at isolated places over Coastal Andhra Pradesh & Yanam during 09th-12th; Telangana & Interior Karnataka on 12th & 13th June.

- ✓ Isolated **heavy rainfall** likely over Tamil Nadu, Puducherry & Karaikal during 09th-12th; Kerala & Mahe during 09th-11th, Coastal Andhra Pradesh & Yanam on 11th & 12th; Rayalaseema during 10th-13th, Telangana on 12th; Karnataka on 09th & 10th; Lakshadweep on 13th with **very heavy rainfall** over Tamil Nadu, Puducherry & Karaikal during 13th-15th; Kerala & Mahe during 12th-15th; Coastal Karnataka on 11th & 15th; Interior Karnataka during 11th-15th June with **Extremely heavy rainfall** likely over Coastal Karnataka during 12th-14th; North Interior Karnataka on 13th; South Interior Karnataka on 12th & 13th June.

West India:

- ✓ Light/moderate rainfall at some/isolated places accompanied with **thunderstorm, lightning & gusty winds speed reaching 40-50 kmph** likely over Marathawada during 09th-15th; with **lightning** over Goa on 09th; Madhya Maharashtra during 09th-14th June with **Thundersquall (wind speed reaching 50-60 kmph gusting to 70 kmph)** very likely at isolated places over Konkan & Goa and Marathawada on 13th & 14th June.
- ✓ Isolated **heavy rainfall** likely over Goa on 09th; Madhya Maharashtra on 12th, Marathawada during 12th-14th June with **very heavy rainfall** on Konkan & Goa on 12th & 15th; Madhya Maharashtra during 13th-15th June with **Extremely heavy rainfall** likely over Konkan & Goa on 13th & 14th June.

East & Central India:

- ✓ Light/moderate rainfall at some places likely to continue over Sub-Himalayan West Bengal & Sikkim during next 7 days and Light/moderate rainfall at isolated/some places accompanied with **thunderstorm, lightning & gusty winds speed reaching 40-50 kmph** likely over Andaman & Nicobar Islands during 09th-11th; Madhya Pradesh, West Bengal & Sikkim during 11th-13th; Vidarbha, Chhattisgarh, Odisha during 09th-13th; Bihar during 11th-15th; Jharkhand during 10th-13th June with **Thundersquall (wind speed reaching 50-60 kmph gusting to 70 kmph)** very likely at isolated places over Vidarbha on 11th; Chhattisgarh during 11th-13th; Bihar on 11th-12th; Odisha on 09th June.
- ✓ Isolated **heavy rainfall** also likely over Andaman & Nicobar Islands on 11th & 12th; Sub-Himalayan West Bengal & Sikkim on 12th, 14th & 15th; Odisha on 10, 14th & 15th June.

Northwest India:

- ✓ Light/moderate rainfall at some/isolated places accompanied with **thunderstorm, lightning & gusty winds speed reaching 40-50 kmph** likely over Himachal Pradesh, Haryana, Chandigarh & Delhi, West Uttar Pradesh & East Rajasthan during 13th-15th; Uttarakhand, East Uttar Pradesh during 11th-15th; Punjab on 14th & 15th June.
- ✓ Isolated **heavy rainfall** likely over Uttarakhand during 12th-15th June.
- ✓ Strong surface winds (speed 20-30 kmph) very likely over plains of Northwest India during 09th-11th June.

Northeast India:

- ✓ Light/moderate rainfall at many/some places likely to continue over northeast India during next 7 days with **isolated heavy rainfall** over Arunachal Pradesh during 12th-15th; south Assam & Meghalaya during 10th-15th; Nagaland, Manipur, Mizoram & Tripura during 09th-15th June.
- ✓ Light/moderate rainfall at some/isolated places accompanied with **thunderstorm, lightning & gusty winds speed reaching 30-40 kmph** over south Assam on 10th; Nagaland, Manipur, Mizoram & Tripura during 09th-13th June.

Maximum Temperature Forecast:

- ❖ No significant change in maximum temperatures likely over Northwest India during next 5 days and gradual fall by 2-3°C thereafter.
- ❖ No significant change in maximum temperatures likely over Central & East India during next 2-3 days and gradual fall by 2-3°C thereafter.
- ❖ No significant change in maximum temperatures likely over rest parts of the country.

Heat wave, Hot & Humid weather and Warn Night warnings:

- ❖ **Heat wave condition** very likely at many/some places over West Rajasthan during 09th-13th with **severe heat wave conditions** at isolated/some parts on 09th & 10th June.
- ❖ **Heat wave conditions** are likely to prevail over Jammu-Kashmir during 09th-12th, Punjab during 09th-13th; Haryana, Chandigarh & Delhi during 09th-12th; West Uttar Pradesh during 09th-12th, East Uttar Pradesh on 09th & 10th, East Rajasthan & north Madhya Pradesh during 09th-11th June.
- ❖ **Hot & humid weather** is likely to prevail over Gangetic West Bengal, Coastal Andhra Pradesh & Yanam on 09th & 10th; Bihar during 09th-11th and Tamil Nadu Puducherry & Karaikal on 09th June.
- ❖ **Warm night conditions** very likely in isolated pockets over Punjab, Haryana Chandigarh & Delhi during 09th-11th; West Uttar Pradesh & Rajasthan on 09th & 10th June.

Fishermen Warnings:

- ❖ Fishermen are advised not to venture along and off the Somalia coast and adjoining sea areas during 09th-13th June.
- ❖ Fishermen are advised not to venture over Comorin area during 10th-13th; southern parts of south Bay of Bengal on 09th; many parts of south Bay of Bengal on 10th; most parts of south Bay of Bengal, off Tamil Nadu coast on 11th; entire south Bay of Bengal and adjoining central Bay of Bengal, along and off south Konkan, Karnataka, Kerala, Tamil Nadu coasts, over Lakshadweep, Maldives areas on 12th and entire south Bay of Bengal and adjoining central Bay of Bengal, along and off south Konkan, Karnataka, Kerala, Tamil Nadu coasts, over Lakshadweep, Maldives areas, over southeast Arabian Sea and adjoining areas of southwest and eastcentral Arabian Sea on 13th June.
- ❖ Fishermen are advised not to venture over the Gulf of Mannar during 09th-13th June.
- ❖ Fishermen are advised not to venture over Andaman Sea during 09th-13th June.

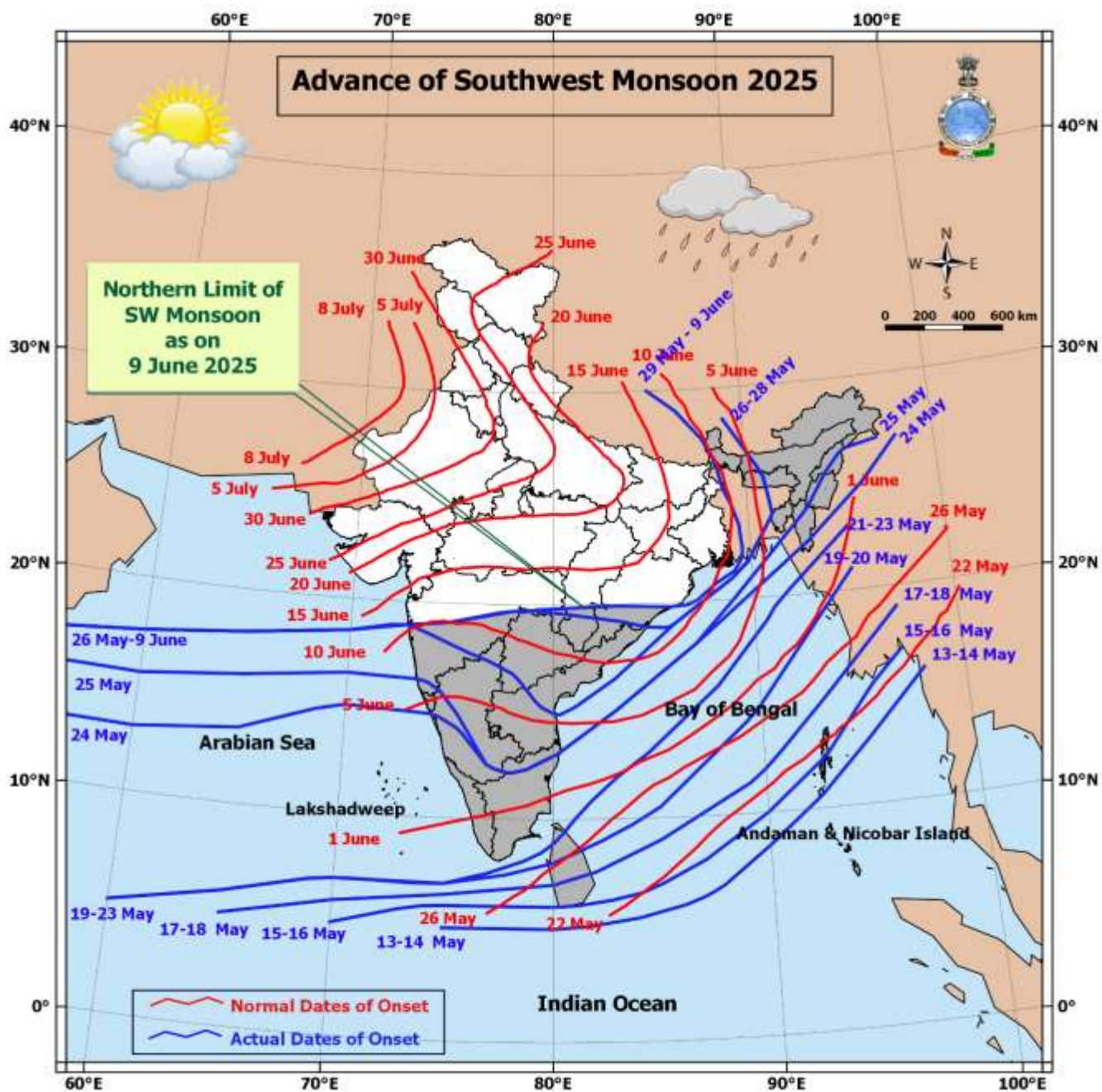
Total suspension of fishing operations is suggested over above mentioned areas and dates.

ii. Weather conditions and forecast over Delhi/NCR during 09th June to 12th June, 2025 (Annexure VI)

For more details, kindly refer National Weather Bulletin:

https://mausam.imd.gov.in/responsive/all_india_forecast_bulletin.php

For District wise warnings refer: <https://mausam.imd.gov.in/responsive/districtWiseWarningGIS.php>



Significant weather reported during past 24 hours till 0830 hours IST of today:**Rainfall recorded (in cm) reported during past 24 hours till 0830 hours IST of today, the 09th June:**

- ❖ **Marathawada:** Lohara (dist Dharashiv) 14, Nilanga (dist Latur) 6, Umarga (dist Dharashiv) 5, Chakur (dist Latur) 5;
- ❖ **South Interior Karnataka:** Parasurampura (dist Chitradurga) 12, Agumbe Emo (dist Shivamogga) 4;
- ❖ **Telangana:** Tadwai (dist Kamareddy) 9, Sadasivanagar (dist Kamareddy) 8, Jukkal (dist Kamareddy) 7, Kamareddy (dist Kamareddy) 7, Birkoor (dist Kamareddy) 6,
- ❖ **Mizoram:** Chawnu (dist Lawngtlai) 9, Saiha (dist Saiha) 6,
- ❖ **Kerala & Mahe:** Chalakudi (dist Thrissur) 8, Idamalayar Dam (dist Ernakulam) 7;
- ❖ **North Interior Karnataka:** Kakkeri (dist Yadgir) 8, Sindhanur (dist Raichur) 5,
- ❖ **Coastal Karnataka:** Kundapur (dist Udupi) 8, Kota (dist Udupi) 4;
- ❖ **Konkan & Goa:** Panjim (dist North Goa) 8, Ratnagiri (dist Ratnagiri) 7;
- ❖ **Rayalaseema:** Uravakonda (dist Anantapuramu) 7, Settur (dist Anantapuramu) 6,
- ❖ **Tamil Nadu:** Mettur (dist Salem), Pennagaram (dist Dharmapuri) 7 each;

Realised Gusty Winds (kmph) During Past 24hours ending at 0830 hrs IST of today the 09th June:

- ❖ **Tamil Nadu Puducherry & Karaikal:** Natham_ISRO 65, Veda sandur 57, Meenamakkam_ISRO 44, Tirur 44, New Chennai Township Private Ltd. 43, Tenkasi 43, Govt_Hss_Mettur 43, Vamban 39, Kadavur 39;
- ❖ **Marathwada:** Nanded (Sagrol) 65, Dharashiv-50, Hingoli (Tondapur) 44, Beed (Ambejogai) 43, Chhatrapati Sambhaji Nagar 39, Solapur 39;
- ❖ **Jammu-Kashmir:** Samba 50, Chatha 29;
- ❖ **Vidarbha:** Chandrapur 50;
- ❖ **West Madhya Pradesh:** Ujjain 48;
- ❖ **West Rajasthan:** Barmer 45;
- ❖ **Andaman & Nicobar Islands:** Sri Vijaya Puram 44;
- ❖ **Madhya Maharashtra:** Jalgaon 44, Nandurbar (Shahada) 42, Nashik (Kalwan) 39;
- ❖ **Himachal Pradesh:** Kukumseri & Seobagh (each) 37;
- ❖ **Odisha:** Puri 31, Gopalpur 28, Chandabali 26;

Temperature observations during past 24 hours till 0830 hours IST of today:

- ❖ Yesterday, Maximum temperatures are in the range of 43-47°C over most places of West Rajasthan; many places of East Rajasthan, Madhya Pradesh; at isolated places over Punjab, Haryana and Vidarbha. They were in the range of 39-43 °C over many places of Uttar Pradesh; some places of coastal Andhra Pradesh, Chhattisgarh; at isolated places over Saurashtra & Kutch, Jharkhand, Telangana, Tamil Nadu and Marathwada. They were in the range of 35-39°C over some places of Odisha, West Bengal, Bihar; at isolated places of Rayalaseema, North Interior Karnataka, Assam & Meghalaya and Nagaland, Manipur, Mizoram & Tripura and below 35 °C, elsewhere in the remaining part of the country. Yesterday, The highest maximum temperature of **47.4°C** was reported at Sri **Ganganagar (West Rajasthan)**.
- ❖ Yesterday, Maximum Temperature were **markedly above normal (> 5.1°C)** at a few places over Arunachal Pradesh; at isolated places over Assam & Meghalaya, West Uttar Pradesh, Haryana-Chandigarh-Delhi, Himachal Pradesh, Jammu-Kashmir-Ladakh-Gilgit-Baltistan-Muzaffarabad, East Madhya Pradesh and Tamil Nadu, Puducherry & Karaikal; **appreciably above normal (3.1°C to 5.0°C)** at many places over Punjab; at most places over West Rajasthan; at a few places over Nagaland, Manipur, Mizoram & Tripura, Sub Himalayan West Bengal & Sikkim, Gangetic West Bengal, Bihar and East Uttar Pradesh; at isolated places over Vidarbha, Coastal Andhra Pradesh & Yanam and Kerala & Mahe; **above normal (1.6°C to 3.0°C)** at many places over Uttarakhand, East Rajasthan and Lakshadweep; at a few places over West Madhya Pradesh and Coastal Karnataka; at isolated places over Odisha, Saurashtra & Kutch, Chhattisgarh and Telangana and **near normal (-1.5°C to 1.5°C)** at most places over Jharkhand, Gujarat Region, Konkan & Goa, Rayalaseema and North Interior Karnataka; at many places over Madhya Maharashtra and South Interior Karnataka; at a few places over Marathwada; at isolated places over Andaman & Nicobar Islands.
- ❖ Yesterday, the maximum temperatures have risen by 2-3 °C over many parts of Jammu & Kashmir, Himachal Pradesh, east Uttarakhand, northwest Rajasthan, Punjab, Haryana, Chandigarh, Delhi, west Uttar Pradesh, northwest Madhya Pradesh, East Madhya Pradesh and adjoining North Chhattisgarh, extreme south Gangetic West Bengal, east Vidarbha, Northeast Assam, northeast Meghalaya, south coastal Maharashtra & adjoining southcentral Madhya Maharashtra.

Fig.1: Maximum Temperatures

Fig.2: Departure of Maximum Temperatures

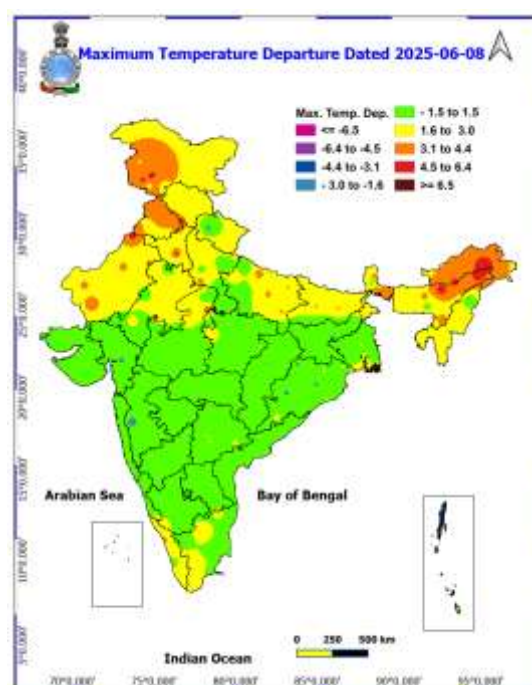
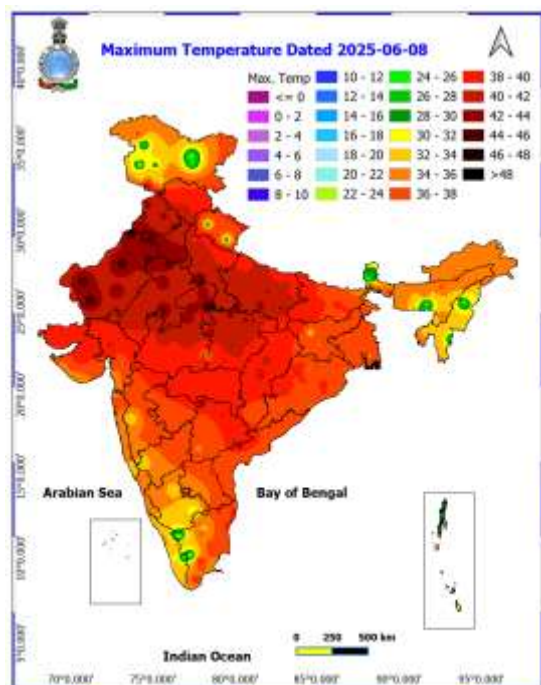
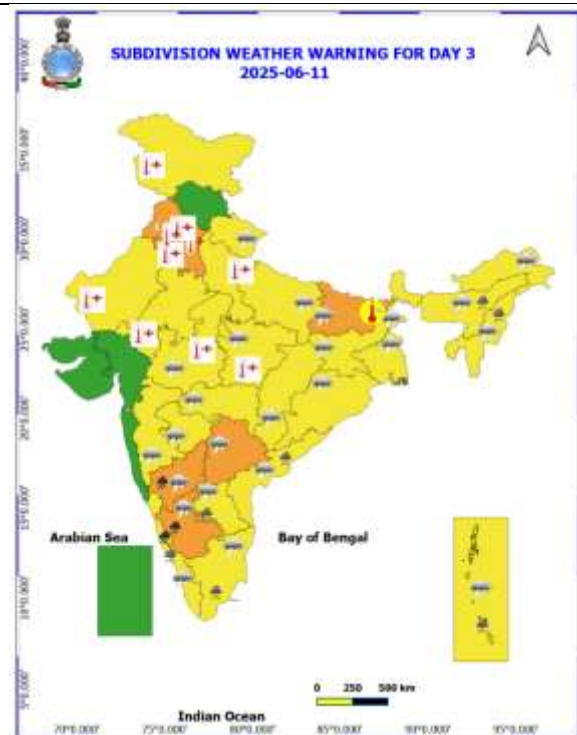
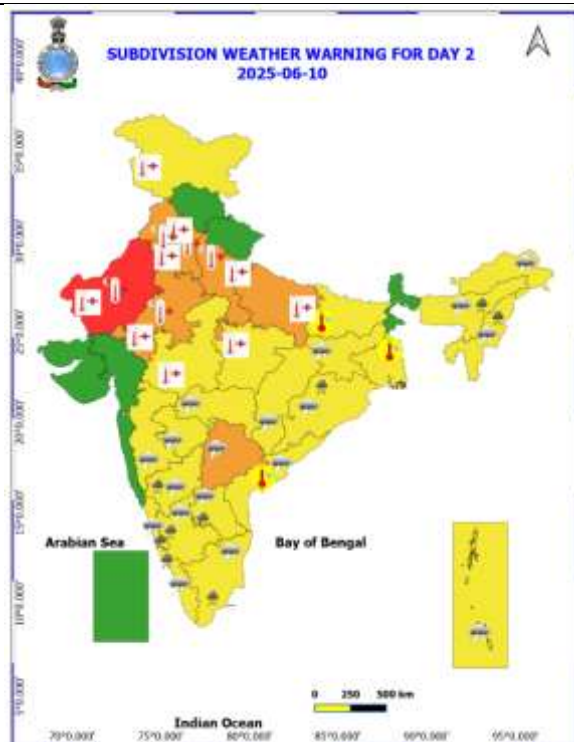
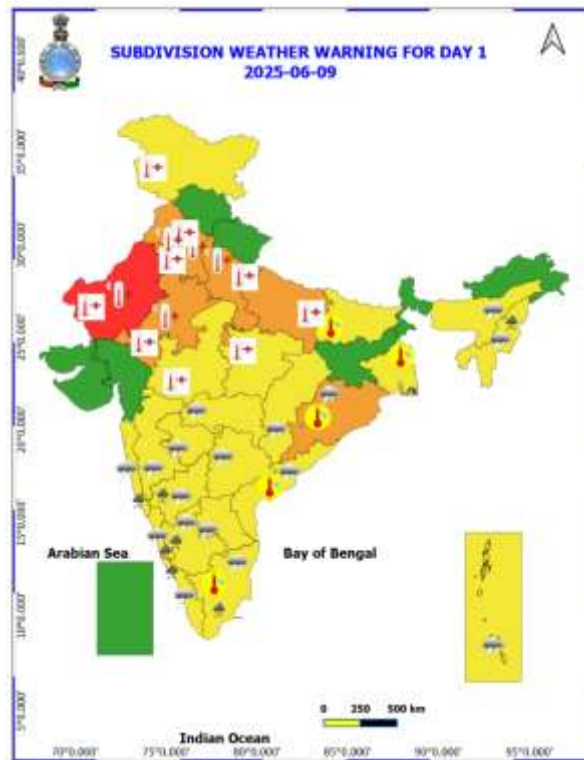
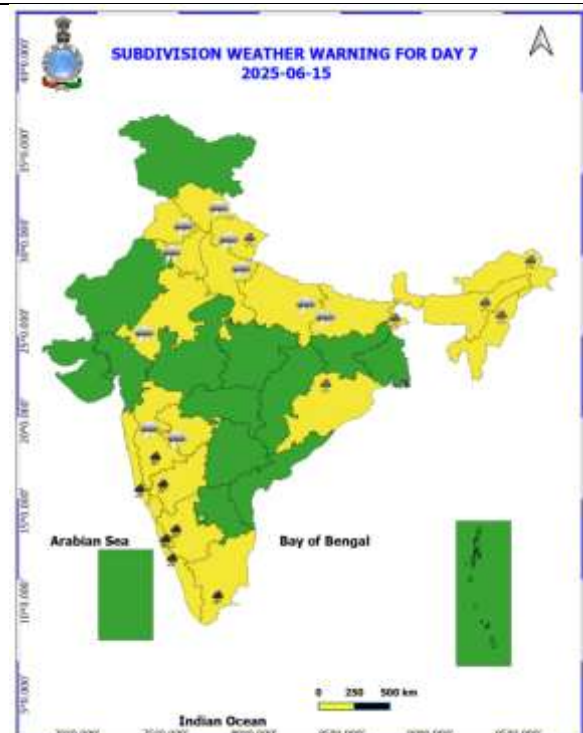
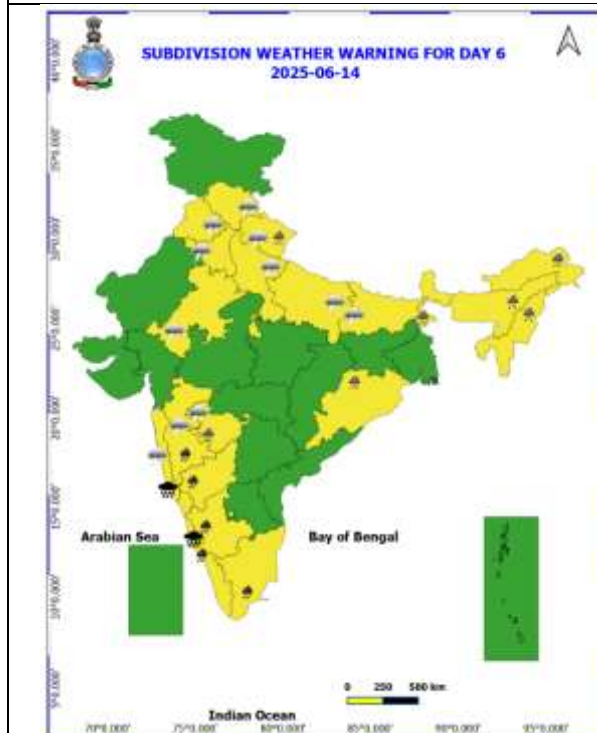
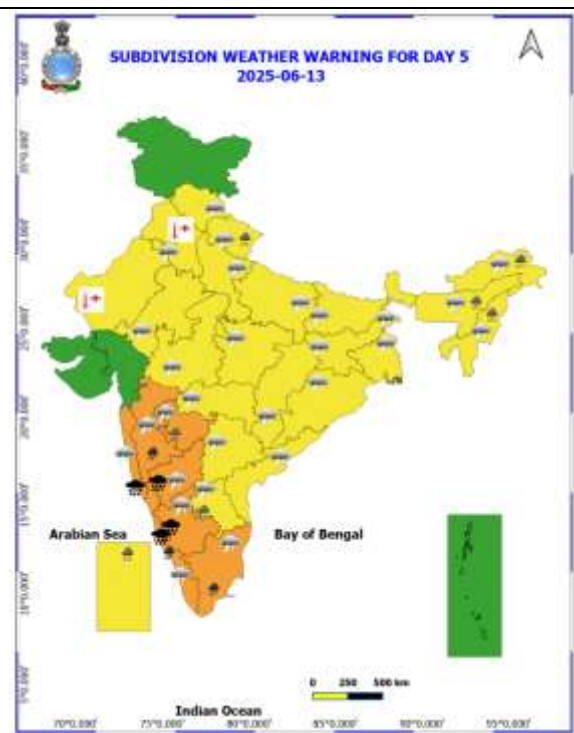
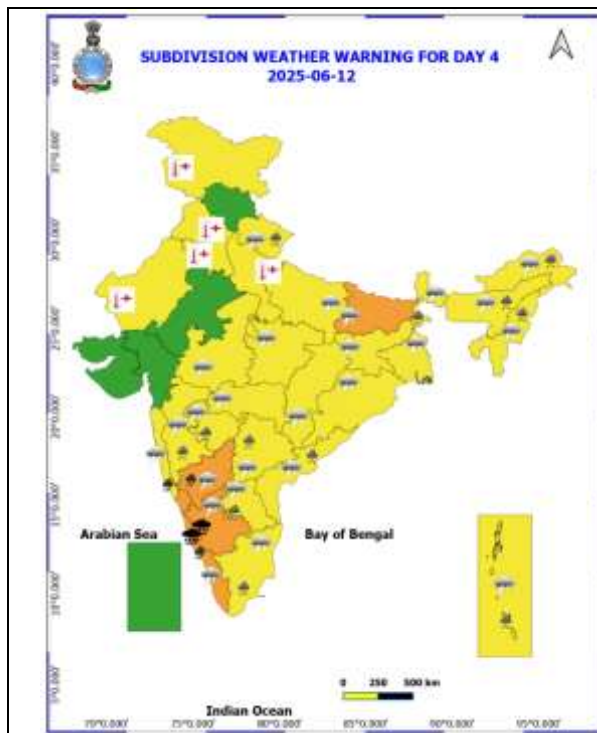


Table-1								
7 Days Rainfall Forecast								
S.No.	Subdivision	9- Jun	10- Jun	11- Jun	12- Jun	13- Jun	14- Jun	15- Jun
		Day 1	Day 2	Day 3	Day 4	Day 5	Day 6	Day 7
1	ANDAMAN & NICOBAR ISLANDS	WS	WS	WS	WS	FWS	FWS	FWS
2	ARUNACHAL PRADESH	ISOL	SCT	SCT	FWS	FWS	FWS	FWS
3	ASSAM & MEHGHALAYA	ISOL	ISOL	SCT	SCT	FWS	FWS	FWS
4	NAGALAND, MANIPUR, MIZORAM AND TRIPURA	SCT	FWS	SCT	SCT	SCT	SCT	SCT
5	SUB HIMALAYAN WEST BENGAL & SIKKIM	ISOL	ISOL	SCT	FWS	FWS	FWS	FWS
6	GANGETIC WEST BENGAL	ISOL	ISOL	SCT	FWS	FWS	FWS	FWS
7	ODISHA	ISOL	SCT	SCT	SCT	SCT	SCT	SCT
8	JHARKHAND	ISOL	ISOL	SCT	SCT	SCT	FWS	FWS
9	BIHAR	ISOL	ISOL	SCT	FWS	SCT	SCT	SCT
10	EAST UTTAR PRADESH	DRY	DRY	ISOL	SCT	ISOL	SCT	SCT
11	WEST UTTAR PRADESH	DRY	DRY	DRY	ISOL	ISOL	ISOL	ISOL
12	UTTARAKHAND	ISOL	ISOL	SCT	FWS	FWS	FWS	FWS
13	HARYANA, CHANDIGARH & DELHI	DRY	DRY	DRY	DRY	ISOL	ISOL	ISOL
14	PUNJAB	DRY	DRY	DRY	DRY	DRY	ISOL	ISOL
15	HIMACHAL PRADESH	DRY	DRY	DRY	DRY	ISOL	ISOL	ISOL
16	JAMMU AND KASHMIR AND LADAKH	DRY	DRY	DRY	DRY	ISOL	ISOL	ISOL
17	WEST RAJASTHAN	DRY	DRY	DRY	DRY	DRY	DRY	DRY
18	EAST RAJASTHAN	DRY	DRY	DRY	DRY	ISOL	ISOL	ISOL
19	WEST MADHYA PRADESH	DRY	DRY	ISOL	ISOL	ISOL	SCT	SCT
20	EAST MADHYA PRADESH	DRY	DRY	ISOL	ISOL	SCT	SCT	SCT
21	GUJRAT REGION	ISOL	ISOL	ISOL	ISOL	ISOL	ISOL	ISOL
22	SAURASHTRA & KUTCH	ISOL	ISOL	ISOL	ISOL	ISOL	ISOL	ISOL
23	KONKAN & GOA	SCT	SCT	SCT	FWS	WS	WS	WS
24	MADHYA MAHARASHTRA	ISOL	ISOL	ISOL	SCT	SCT	FWS	FWS
25	MARATHWADA	ISOL	ISOL	SCT	SCT	ISOL	FWS	FWS
26	VIDARBHA	ISOL	ISOL	SCT	FWS	SCT	ISOL	ISOL
27	CHHATTISGARH	ISOL	ISOL	ISOL	SCT	SCT	SCT	SCT
28	COASTAL ANDHRA PRADESH	ISOL	ISOL	FWS	FWS	SCT	ISOL	ISOL
29	TELANGANA	SCT	SCT	SCT	FWS	FWS	FWS	SCT
30	RAYALASEEMA	SCT	SCT	WS	WS	FWS	ISOL	ISOL
31	TAMILNADU & PUDUCHERRY	SCT	SCT	SCT	SCT	SCT	SCT	SCT
32	COSTAL KARNATAKA	WS	WS	WS	WS	WS	WS	WS
33	NORTH INTERIOR KARNATAKA	WS	FWS	FWS	WS	WS	WS	WS
34	SOUTH INTERIOR KARNATAKA	WS	WS	WS	WS	WS	WS	WS
35	KERALA AND MAHE	WS	WS	WS	WS	WS	WS	WS
36	LAKSHADWEEP	WS	WS	WS	WS	WS	WS	WS

- As the lead period increases forecast accuracy decreases.





- Action may be taken based on ORANGE AND REDCOLOUR warnings.
- Vulnerable regions likely urban and hilly areas action may be initiated for heavy rainfall warning.
- As the lead period increases forecast accuracy decreases.

Detailed districtwise Multi Hazard weather warning for next five days available at
<https://mausam.imd.gov.in/responsive/districtWiseWarningGIS.php>

Weather forecast over Delhi/NCR during 09th to 12th June 2025**Past Weather:**

There has been a rise in the minimum temperature upto 1°C and rise in the maximum temperature up to 2 - 3°C over Delhi/NCR during the past 24 hours. The maximum and minimum temperatures over Delhi were around 42 to 44°C and 26 to 29° respectively. The minimum temperature was near normal and the maximum temperature was above normal up to 1 - 2°C. Mainly clear sky conditions with predominant surface wind from the southwest/west direction with wind speeds up to 20 kmph prevailed during the past 24 hours. Mainly clear sky conditions with wind speed less than 18 kmph from the southwest direction prevailed over the region in the forenoon today.

Weather Forecast:

09.06.2025: Mainly clear sky. Heat wave conditions at isolated places. Dust rising surface winds 20 – 30 kmph. The maximum temperatures over Delhi are likely to be in the range of 43 to 45°C. The maximum temperature will be above normal up to 3 - 5°C. The predominant surface wind will likely be from the west direction with a wind speed of less than 20 kmph in the afternoon. The wind speed will gradually increase becoming 20-25 kmph from the west direction during evening and night.

10.06.2025: Mainly clear sky. Heat wave conditions at isolated places. Dust rising surface winds 20 – 30 kmph. The maximum and minimum temperatures over Delhi are likely to be in the range of 43 to 45°C and 27 to 29°C respectively. The minimum temperature will be above normal up to 1 - 2°C and the maximum temperature will be above normal up to 3 - 5°C. The predominant surface wind will likely be from the northwest direction with a wind speed of less than 25 kmph during the morning hours. The wind speed will gradually decrease becoming 18-20 kmph from the northwest direction in the afternoon. It will decrease becoming less than 18 kmph from the northwest direction during evening and night.

11.06.2025: Mainly clear sky. Heat wave conditions at isolated places. The maximum and minimum temperatures over Delhi are likely to be in the range of 43 to 45°C and 27 to 29°C respectively. The minimum temperature will be above normal up to 1 - 2°C and the maximum temperature will be above normal up to 3 - 5°C. The predominant surface wind will likely be from the northwest direction with a wind speed of less than 15 kmph during the morning hours. The wind speed will gradually increase becoming less than 20 kmph from the northwest direction in the afternoon. It will decrease to less than 15 kmph from the northwest direction during the evening and night.

12.06.2025: Partly cloudy sky. Hot and humid weather condition. Very light to light rain/thunderstorm/lightning accompanied with gusty winds 40 -50 kmph temporary reaching 60 kmph during thunderstorm towards evening/night. The maximum and minimum temperatures over Delhi are likely to be in the range of 42 to 44°C and 27 to 29°C respectively. The minimum temperature will be above normal up to 1 - 2°C and the maximum temperature will be above normal up to 1 - 3°C. The predominant surface wind will likely be from the northwest direction with a wind speed of less than 15 kmph during the morning hours. The wind speed will gradually increase becoming less than 20 kmph from the west direction in the afternoon. It will decrease to less than 15 kmph from the west direction during the evening and night.

Impact expected and Action Suggested:

- Be cautious and take precautionary measures though there is likelihood of heat wave conditions. There is likelihood of heat related impact to vulnerable population as the temperatures are likely to be above normal.
- Moderate health concern for vulnerable people e.g. infants, elderly people with chronic diseases.
- Avoid heat exposure, wear light weight, light colored, loose, cotton clothes, cover your head, use a cloth, hat or umbrella.
- Due to heat wave conditions, the surface ozone will be predominant over isolated places, may cause discomfort to most of the people on prolonged exposure.

Impact & Action Suggested due to extremely heavy falls/ very heavy rainfall over

- ✓ **Extremely heavy rainfall** over Coastal Karnataka during 12th-14th; North Interior Karnataka on 13th; South Interior Karnataka on 12th & 13th; Konkan & Goa on 13th & 14th June.
- ✓ **Very heavy rainfall** over Madhya Maharashtra, Tamil Nadu, Puducherry & Karaikal during 13th-15th; Kerala & Mahe, Konkan & Goa during 12th-15th; Coastal Karnataka on 11th & 15th; Interior Karnataka during 11th-15th June.

Impact Expected

- Localized Flooding of roads, water logging in low lying areas and closure of underpasses mainly in urban areas of the above region.
- Occasional reduction in visibility due to heavy rainfall.
- Disruption of traffic in major cities due to water logging in roads leading to increased travel time.
- Minor damage to kutcha roads.
- Possibilities of damage to vulnerable structure.
- Localized Landslides/Mudslides/landslips/mudslips/landsinks/mudsinks.
- Damage to horticulture and standing crops in some areas due to inundation.
- It may lead to riverine flooding in some river catchments (for riverine flooding please visit Web page of CWC)

Action Suggested

- Check for traffic congestion on your route before leaving for your destination.
- Follow any traffic advisories that are issued in this regard.
- Avoid going to areas that face the water logging problems often.
- Avoid staying in vulnerable structure.

Impact expected and action suggested due to

- ❖ **Heat wave condition** at many/some places over West Rajasthan during 09th-13th with **severe heat wave conditions** at isolated/some parts on 09th & 10th June.
- ❖ **Heat wave conditions** over Jammu-Kashmir during 09th-12th, Punjab during 09th-13th; Haryana, Chandigarh & Delhi during 09th-12th; West Uttar Pradesh during 09th-12th, East Uttar Pradesh on 09th & 10th, East Rajasthan & north Madhya Pradesh during 09th-11th June.

Red alert Areas

- Very high likelihood of developing heat illness and heat stroke in all ages.
- Extreme care needed for vulnerable people.

Orange alert Areas:

- High temperature & increased likelihood of heat illness symptoms in people who are either exposed to sun for a prolonged period or doing heavy work.
- High health concern for vulnerable people e.g. infants, elderly, people with chronic diseases.
- Avoid heat exposure– keep cool. Avoid dehydration.
- Drink sufficient water- even if not thirsty.
- Use ORS, homemade drinks like lassi, torani (rice water), lemon water, buttermilk, etc. to keep yourself hydrated.

Yellow alert Areas:

- Moderate temperature & heat is tolerable for general public but moderate health concern likely for vulnerable people e.g. infants, elderly, people with chronic diseases.
- Avoid heat exposure.
- Wear lightweight, light colour, loose, cotton clothes.
- Cover your head, use a cloth, hat or umbrella.

Impact expected and action suggested due to isolated thunderstorm with lightning/gusty & Squally winds over

- ✓ **Thundersquall (wind speed reaching 50-60 kmph gusting to 70 kmph)** at isolated places over Odisha on 09th; Vidarbha on 11th; Chhattisgarh during 11th-13th; Bihar on 11th-12th; Coastal Andhra Pradesh & Yanam during 09th-12th; Telangana & Interior Karnataka on 12th & 13th; Konkan & Goa and Marathawada on 13th & 14th Vidarbha on 11th; Chhattisgarh during 11th-13th; Bihar on 11th-12th; June.

Impact expected:

- Breaking of tree branches, uprooting of large avenue trees. Large dead limbs blown from trees. Damage to Standing crops.
- Minor to Major damage to banana and papaya trees.
- Minor to major damage to power and communication lines due to breaking of branches.
- Strong wind/hail may damage plantation, horticulture and standing crops.
- Partial damage to vulnerable structures due to strong winds.
- Minor damage to kutcha houses/walls and huts.
- Loose objects may fly.

Action suggested:

- People are advised to keep a watch on the weather for worsening conditions and be ready to move to safer places accordingly.
- Stay indoors, close windows & doors and avoid travel if possible.
- Take safe shelters; do not take shelter under trees.
- Do not lie on concrete floors and do not lean against concrete walls.
- Unplug electrical/ electronic appliances.
- Immediately get out of water bodies.
- Keep away from all the objects that conduct electricity.

Agromet advisories for likely impact of Rainfall / Gusty Winds / Heat Wave

- Drain out excess water and ensure proper drainage in standing crops, vegetables and orchards in **Tamil Nadu, Kerala, Karnataka, and NMMT**.
- Shift the harvested produce in safer places or cover the produce with tarpaulin sheets in the fields. Tie the harvested crops properly and cover them to minimise the risk of displacement due to strong surface winds.
- Provide mechanical support and propping to horticultural crops and staking to vegetables to avoid lodging.
- In **Jammu & Kashmir, Punjab, Haryana, Uttar Pradesh, Rajasthan** and **north Madhya Pradesh** apply light and frequent irrigation in the evening to protect standing crops, vegetables and orchards from the adverse effects of heat waves and high temperatures. Undertake mulching with crop residue, straw, polythene or soil to conserve soil moisture.

Livestock / Poultry

- Keep the animals inside the shed during rainfall and provide them balanced feed.
- Store feed and fodder in a safe place to prevent spoilage.
- To reduce the effect of heat wave/high temperature, cover the roof of poultry sheds with grass. Also, provide clean, hygienic and plenty of drinking water to animals.

Legends & abbreviations:

- ❖ **Heavy Rain:**64.5-115.5mm; **Very Heavy Rain:**115.6-204.4mm; **Extremely Heavy Rain:** >204.4mm.
- ❖ **Obsy:** Observatory; Automatic Weather Station; **ARG:** Automatic Rain Gauge; **dist:** District; **NH:** National Highway; **KVK:** Krishi Vigyan Kendra; **DVC:** Damodar Valley Corporation; **PTO:** Part Time Office, **Aero:** Aerodrome, **IAF:** Indian Air Force.
- ❖ **Region wise classification of meteorological Sub-Divisions:**
 - **Northwest India:** Western Himalayan Region (Jammu-Kashmir-Ladakh-Gilgit-Baltistan-Muzaffarabad, Himachal Pradesh and Uttarakhand); Punjab, Haryana-Chandigarh-Delhi; West Uttar Pradesh, East Uttar Pradesh, West Rajasthan and East Rajasthan.
 - **Central India:** West Madhya Pradesh, East Madhya Pradesh, Vidarbha and Chhattisgarh.
 - **East India:** Bihar, Jharkhand, Sub-Himalayan West Bengal & Sikkim; Gangetic West Bengal, Odisha and Andaman & Nicobar Islands.
 - **Northeast India:** Arunachal Pradesh, Assam & Meghalaya and Nagaland, Manipur, Mizoram & Tripura.
 - **West India:** Gujarat Region, Saurashtra & Kutch, Konkan & Goa, Madhya Maharashtra and Marathawada.
 - **South India:** Coastal Andhra Pradesh & Yanam, Telangana, Rayalaseema, Coastal Karnataka, North Interior Karnataka, South Interior Karnataka, Kerala & Mahe, Tamil Nadu, Puducherry & Karaikal and Lakshadweep.

LEGENDS

1. अंडमान और निकोबार द्वीपसमूह

2. अरुणाचल प्रदेश

3. असम और मेघालय

4. नागालैंड, मणिपुर, मिजोरम और त्रिपुरा

5. उप-हिमालयी पश्चिम बंगाल और सिक्किम

6. गंगीय पश्चिम बंगाल

7. ओडिशा

8. झारखंड

9. बिहार

10. पूर्वी उत्तर प्रदेश

11. पश्चिम उत्तर प्रदेश

12. उत्तराखंड

13. हरियाणा, चंडीगढ़ और दिल्ली

14. पंजाब

15. हिमाचल प्रदेश

16. जम्मू और कश्मीर और लद्दाख

17. पश्चिम राजस्थान

18. पूर्वी राजस्थान

19. पश्चिम मध्य प्रदेश

20. पूर्वी मध्य प्रदेश

21. गुजरात

22. सौराष्ट्र

23. कोंकण और गोवा

24. मध्य महाराष्ट्र

25. मराठवाड़ा

26. विदर्भ

27. छत्तीसगढ़

28. तटीय आंध्र प्रदेश और यनम

29. तेलंगाना

30. रायलसीमा

31. तमिलनाडु, पुडुचेरी और कराईकल

32. तटीय कर्नाटक

33. आंतरिक उत्तरी कर्नाटक

34. आंतरिक दक्षिणी कर्नाटक

35. केरल और माहे

36. लक्षद्वीप



1. Andaman & Nicobar Islands

2. Arunachal Pradesh

3. Assam & Meghalaya

4. Nagaland, Manipur, Mizoram & Tripura

5. Sub-Himalayan West Bengal & Sikkim

6. Gangetic West Bengal

7. Odisha

8. Jharkhand

9. Bihar

10. East Uttar Pradesh

11. West Uttar Pradesh

12. Uttarakhand

13. Haryana, Chandigarh & Delhi

14. Punjab

15. Himachal Pradesh

16. Jammu & Kashmir and Ladakh

17. West Rajasthan

18. East Rajasthan

19. West Madhya Pradesh

20. East Madhya Pradesh

21. Gujarat

22. Saurashtra

23. Konkan & Goa

24. Madhya Maharashtra

25. Marathwada

26. Vidarbha

27. Chhattisgarh

28. Coastal Andhra Pradesh & Yanam

29. Telangana

30. Rayalaseema

31. Tamilnadu, Puducherry & Karaikal

32. Coastal Karnataka

33. North Interior Karnataka

34. South Interior Karnataka

35. Kerala & Mahe

36. Lakshadweep

SPATIAL DISTRIBUTION (% of Stations reporting)

% Stations	Category	% Stations	Category
76-100	Widespread (WS/Most Places)	26-50	Scattered (SCT/A Few Places)
51-75	Fairly Widespread (FWS/Many Places)	1-25	Isolated (ISOL)



Fog



Heavy Snow



Cold Wave



Heavy Rain



Dust Storm



Cold Day



Very Heavy Rain



Heat Wave



Ground Frost



Extremely Heavy Rain



Warm Night



Thunder & Lightning



Hot Day



Hailstorm



Hot & Humid



Dust Raising Winds



Strong Surface Winds

COLOUR CODED WARNING

No Warning (No Action)

Watch (Be Aware)

Alert (Be Prepared To Take Action)

Warning (Take Action)

Probabilistic Forecast

Terms	Probability of Occurrence (%)
Unlikely	< 25
Likely	25 - 50
Very Likely	50 - 75
Most Likely	> 75

* Red colour warning does not mean "Red Alert", Red colour warning means "Take Action".

Forecast and Warning for any day is valid from 0830 hours IST of day till 0830 hours IST of next day.

For more details, kindly visit <https://mausam.imd.gov.in> or contact: 011-2434-4599

(Service to the Nation since 1875)

DEFINITION/CRITERIA

Rain/ Snow *

Heavy: 64.5 to 115.5 mm/cm *
Very Heavy: 115.6 to 204.4 mm/cm *
Extremely Heavy: > 204.4 mm/cm *

Heat Wave

When maximum temperature of a station reaches $\geq 40^{\circ}\text{C}$ for plains and $\geq 30^{\circ}\text{C}$ for hilly regions
(a) Based on Departure from normal

Heat Wave: Maximum Temperature Departure from normal 4.5°C to 6.4°C .

Severe Heat Wave: Maximum Temperature Departure from normal $\geq 6.5^{\circ}\text{C}$

(b). Based on Actual maximum temperature

Heat Wave: When actual maximum temperature $\geq 45^{\circ}\text{C}$.

Severe Heat Wave: When actual maximum temperature $\geq 47^{\circ}\text{C}$.

(c). Criteria for heat wave for coastal stations

When maximum temperature departure is $> 4.5^{\circ}\text{C}$ from normal. Heat Wave may be described provided maximum temperature $\geq 37^{\circ}\text{C}$.

Warm Night

When maximum temperature remains 40°C

Warm Night: When minimum temperature departure 4.5°C to 6.4°C .

Severe Warm Night: When minimum temperature departure $> 6.4^{\circ}\text{C}$.

Cold Wave

When minimum temperature of a station $\leq 10^{\circ}\text{C}$ for plains and $\leq 0^{\circ}\text{C}$ for hilly regions.

(a). Based on departure

Cold Wave: Minimum Temperature Departure from normal -4.5°C to -6.4°C .

Severe Cold Wave: Minimum Temperature Departure from normal $\leq -6.5^{\circ}\text{C}$

(b) Based on actual Minimum Temperature (for Plains only)

Cold Wave: When Minimum Temperature is $\leq 4.0^{\circ}\text{C}$

Severe Cold Wave: When Minimum Temperature is $\leq 2.0^{\circ}\text{C}$

(c) For Coastal Stations

When Minimum Temperature departure is $\leq -4.5^{\circ}\text{C}$ & actual Minimum Temperature is $\leq 15^{\circ}\text{C}$

Cold Day

When minimum temperature of a station $\leq 10^{\circ}\text{C}$ for plains and $\leq 0^{\circ}\text{C}$ for hilly regions

Based on departure

Cold Day: Maximum Temperature Departure from normal -4.5°C to -6.4°C .

Severe Cold Day: Maximum Temperature Departure from normal $\leq -6.5^{\circ}\text{C}$

Fog

Phenomenon of small droplets suspended in air and the horizontal visibility $< 1\text{km}$

Moderate Fog: When the visibility between 500-200 metres

Dense Fog: when the visibility between 50- 200 metres

Very Dense Fog: when the visibility < 50 metres

Thunderstorm

Sudden electrical discharges manifested by a flash of light (Lightning) and a sharp rumbling sound (thunder)

Dust/Sand Storm

An ensemble of particles of dust or sand energetically lifted to great heights by a strong and turbulent wind.

Frost

Ice deposits on ground

Air temperature $\leq 4^{\circ}\text{C}$ (over Plains)

Squall

A strong wind that rises suddenly, lasts for atleast 1 minute.

Moderate: Wind speed 52-61 kmph

Severe: Wind speed 62-67 kmph

Very Severe: Wind speed > 67 kmph

Sea State

Effect of various waves in the sea over specific area

Rough to very rough: Wind speed 41-62 kmph (22-33 knots) & Wave height 2.5-6 metre

High to very high: Wind speed 63-117 kmph (34-63 knots) & Wave height 6-14 metre

Phenomenal: Wind speed > 117 kmph (> 63 knots) & Wave height > 14 metre

Cyclone

Cyclonic Storm: Wind speed 62-87 kmph (34-47 knots)

Severe Cyclonic Storm: Wind speed 88-117 kmph (48-63 knots)

Very Severe Cyclonic Storm: Wind speed 118-165 kmph (64 - 89 knots)

Extremely Severe Cyclonic Storm: Wind speed 166-220 kmph (90 -119 knots)

Super Cyclone Storm: Wind speed > 220 kmph (> 119 knots)

* Red colour warning does not mean "Red Alert", Red colour warning means "Take Action".

Forecast and Warning for any day is valid from 0830 hours IST of day till 0830 hours IST of next day.

For more details, kindly visit <https://mausam.imd.gov.in> or contact: 011-2434-4599

(Service to the Nation since 1875)

Hot and Humid: When maximum temperatures remain 3°C above normal along with the above normal relative humidity.