



Government of India
Ministry of Earth Sciences
India Meteorological Department



Press Release

Date: 11th June, 2025

Time of Issue: 1400 hours IST

Subject: (i) Monsoon likely to be in active phase with heavy to very heavy rainfall at a few places and extremely heavy falls at isolated places over south peninsular India during 12th-16th June and over Konkan & Goa during 12th-14th June, 2025.

(ii) Heat Wave to severe heat wave conditions are likely to continue over Northwest India including Western Himalayan Region till 13th and reduce thereafter.

Southwest Monsoon: (Annexure I):

- ❖ The Northern Limit of Monsoon continues to pass through 17.0°N/55°E, 17.5°N/60°E, 18°N/65°E, 18.5°N/70°E, Mumbai, Ahilyanagar, Adilabad, Bhawanipatna, Puri, Sandhead Island, 23.5°N/89.5°E, Balurghat, 30°N/85°E.
- ❖ Conditions are likely to be favourable for further advancement of Monsoon over some more parts of Central and adjoining East India around 14th June.

Realised weather during past 24 hours till 0830 hours IST of today, the 11th June, 2025 (Annexure II):

- ❖ **Heat wave conditions** prevailed at many places with **severe heat wave conditions** at isolated places over Jammu-Kashmir, Punjab, West Rajasthan, West Madhya Pradesh; **Heat wave conditions** at many places over Himachal Pradesh, Haryana Chandigarh & Delhi; at a few places over Uttar Pradesh, East Rajasthan and East Madhya Pradesh.
- ❖ **Warm night to severe warm night conditions** observed in isolated pockets of West Uttar Pradesh & West Rajasthan; **Warm night conditions** in isolated pockets of Punjab, East Uttar Pradesh and Haryana.
- ❖ **Heavy to very heavy rainfall** has been recorded at isolated places over Telangana, Kerala & Mahe; **Heavy rainfall** at isolated places over Uttarakhand, Odisha, Assam, Tripura, Chhattisgarh, Tamil Nadu Puducherry & Karaikal, Coastal Andhra Pradesh & Yanam.
- ❖ **Thunderstorm accompanied with Squally/Gusty winds** with speed 60-90 kmph at isolated places over Marathwada, Chhattisgarh, Andaman & Nicobar Islands, Tamil Nadu, Puducherry & Karaikal; with speed 30-60 kmph at isolated places over Vidarbha, Madhya Pradesh, Madhya Maharashtra, Arunachal Pradesh, Assam & Meghalaya, Nagaland, Manipur, Mizoram & Tripura, Gangetic West Bengal, West Uttar Pradesh, Himachal Pradesh, Uttarakhand, Konkan, Jammu, Jharkhand, Bihar, Odisha.

For more details of realised weather, kindly refer Annexure II,

Detailed observations of Maximum Temperature during past 24 hours till 0830 hours IST of today are appended in **Annexure III.**

i. Weather Systems, Forecast and Warnings (refer to Annexure IV & V):

- ❖ An **upper air cyclonic circulation** lies over westcentral Bay of Bengal off north Coastal Andhra Pradesh coast in lower & middle tropospheric levels.
- ❖ A **trough** runs from northeast Rajasthan to upper air cyclonic circulation over westcentral Bay of Bengal off north Coastal Andhra Pradesh coast in lower tropospheric levels.
- ❖ An **upper air cyclonic circulation** lies over East Uttar Pradesh and another over Haryana in lower tropospheric levels.

- ❖ A fresh **Western Disturbance** as a trough in middle tropospheric westerlies with its axis at 5.8 km above mean sea level runs roughly along Long. 58°E to the north of Lat. 30°N and it is likely to affect over Northwest India from 13th June 2025.
- ❖ Under the influence of these systems, the following weather is likely:

South Peninsular India:

- ✓ Light/moderate rainfall at most/many places over Kerala & Mahe, Karnataka, Lakshadweep during next 7 days and Light/moderate rainfall at many/some places accompanied with isolated **thunderstorm, lightning & gusty winds speed reaching 30-50 kmph** over Tamilnadu Puducherry & Karaikal, Coastal Andhra Pradesh & Yanam, Rayalaseema, Telangana during 11th-13th June.
- ✓ **Strong surface winds** (speed 50-60 kmph) very likely over Tamil Nadu Puducherry & Karaikal, Kerala & Mahe, Coastal Andhra Pradesh & Yanam and Karnataka during 12th-15th June.
- ✓ Isolated **heavy rainfall** likely over Tamilnadu Puducherry & Karaikal, Rayalaseema on 11th; Coastal Andhra Pradesh & Yanam, Telangana during 12th-15th June with **very heavy rainfall** over Tamilnadu Puducherry & Karaikal during 12th-17th; Kerala & Mahe on 12th & 13th, Karnataka during 11th-17th; Coastal Andhra Pradesh & Yanam, Telangana on 11th June with **Extremely heavy rainfall** likely over Kerala & Mahe during 14th-16th; Coastal & South Interior Karnataka during 12th-16th and over North Interior Karnataka on 12th, Tamilnadu Puducherry & Karaikal on 14th & 15th June.

West India:

- ✓ Light/moderate rainfall at some/isolated places accompanied with **thunderstorm, lightning & gusty winds speed reaching 30-40 kmph** likely over Madhya Maharashtra, Marathawada, Konkan & Goa on 11th; Gujarat State during 14th-16th June with **Thundersquall (wind speed reaching 50-60 kmph gusting to 70 kmph)** very likely at isolated places over Madhya Maharashtra, Marathawada, Konkan & Goa during 12th-14th June.
- ✓ Isolated **heavy rainfall** likely over Konkan & Goa, Madhya Maharashtra during 11th-17th, Marathawada during 11th-14th with **very heavy rainfall** on Konkan & Goa on 15th & 16th; Madhya Maharashtra on 12th & 13th June with **Extremely heavy rainfall** likely over Konkan & Goa during 12th-14th June.

East & Central India:

- ✓ Light/moderate rainfall at some places likely to continue over Sub-Himalayan West Bengal & Sikkim during next 7 days and Light/moderate rainfall at isolated/some places accompanied with **thunderstorm, lightning & gusty winds speed reaching 40-50 kmph** likely over Andaman & Nicobar Islands, Sub-Himalayan West Bengal & Sikkim, Odisha during 11th-13th; Madhya Pradesh, Vidarbha, Chhattisgarh, Gangetic West Bengal, Bihar, Jharkhand during 11th-15th June with **Thundersquall (wind speed reaching 50-60 kmph gusting to 70 kmph)** very likely at isolated places over Madhya Pradesh on 14th & 15th; Vidarbha, Chhattisgarh during 11th-13th, Bihar on 13th June.
- ✓ Isolated **heavy rainfall** also likely over Chhattisgarh on 11th & during 14th-17th; Vidarbha during 14th-17th; Andaman & Nicobar Islands on 12th & 13th; Sub-Himalayan West Bengal & Sikkim during 13th-15th; Odisha during 11th-17th June.

Northwest India:

- ✓ Light/moderate rainfall at some/isolated places accompanied with **thunderstorm, lightning & gusty winds speed reaching 40-50 kmph** likely Himachal Pradesh & Uttarakhand during 12th-17th; Punjab, Haryana, Uttar Pradesh, Rajasthan during 13th-17th June with **Thundersquall (wind speed reaching 50-60 kmph gusting to 70 kmph)** very likely at isolated places over Rajasthan during 14th-17th June.
- ✓ Isolated **heavy rainfall** likely over Uttarakhand during 11th-17th June.

Northeast India:

- ✓ Light/moderate rainfall at many/some places accompanied with **thunderstorm, lightning & gusty winds speed reaching 30-40 kmph** likely to continue over northeast India during next 7 days with **isolated heavy rainfall** over Arunachal Pradesh, Assam & Meghalaya during 13th-17th; Nagaland, Manipur, Mizoram & Tripura during 11th-17th June.

Maximum Temperature Forecast:

- ❖ No significant change in maximum temperatures likely over Northwest & Central India during next 3 days and gradual fall by 2-4°C thereafter.
- ❖ No significant change in maximum temperatures likely over East India during next 24 hours and gradual fall by 2-3°C thereafter for subsequent 3 days and no significant change thereafter.
- ❖ No significant change in maximum temperatures likely over rest parts of the country.

Heat wave, Hot & Humid weather and Warn Night warnings:

- ❖ **Heat wave condition** very likely at many/some places over Jammu-Kashmir, Punjab, Haryana Chandigarh & Delhi during 11th-14th with **severe heat wave conditions** at isolated/some parts on 11th & 12th June.
- ❖ **Heat wave condition** very likely at many/some places over Himachal Pradesh & East Rajasthan during 11th-13th with **severe heat wave conditions** at isolated/some parts on 11th & 12th June.
- ❖ **Heat wave condition** very likely at many/some places over West Rajasthan during 11th-15th with **severe heat wave conditions** at isolated/some parts during 11th-13th June.
- ❖ **Heat wave conditions** very likely in isolated/some places over West Uttar Pradesh on 11th & 12th; East Uttar Pradesh on 11th June.
- ❖ **Hot & humid weather** is likely to prevail over Bihar, Assam & Meghalaya on 11th & 12th; Arunachal Pradesh on 11th June.
- ❖ **Warm night conditions** very likely in isolated pockets over Assam & Meghalaya on 11th; Punjab, Haryana, West Rajasthan during 11th-13th; East Rajasthan, West Uttar Pradesh on 11th & 12th June.

Fishermen Warnings:

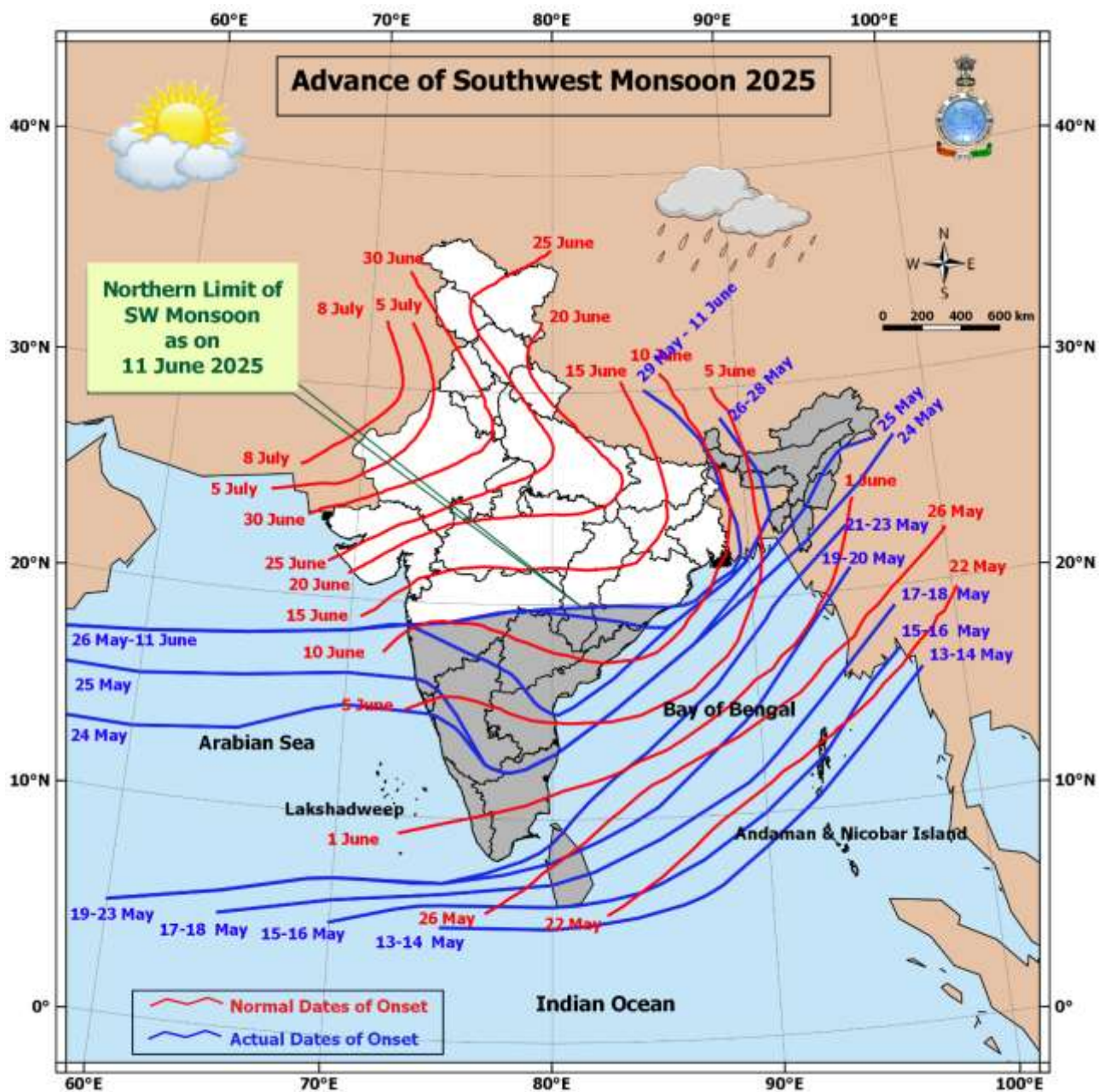
- ❖ Fishermen are advised not to venture along and off the Somalia coast and adjoining sea areas during 11th-15th June.
 - ❖ Fishermen are advised not to venture over Comorin area during 11th-15th June; Along and off Karnataka, Kerala coasts during 11th-15th June; south Konkan, Goa coasts on 12th, entire Konkan, Goa coasts during 13th-15th June; over Lakshadweep, Maldives areas and south east Arabian Sea during 11th-15th June; over eastcentral Arabian Sea on 14th & 15th; over some parts of westcentral and southwest Arabian Sea on 14th & many parts of southwest and westcentral Arabian Sea on 15th June;
 - ❖ Fishermen are advised not to venture over south Bay of Bengal during 11th-15th June; adjoining parts of central Bay of Bengal on 13th; over central Bay of Bengal on 14th & 15th; along and off Tamil Nadu and Andhra Pradesh coasts on 11th, 12th & 15th; off Tamil Nadu coast on 13th & 14th and off Andhra Pradesh coast on 14th June.
 - ❖ Fishermen are advised not to venture over the Gulf of Mannar during 11th-15th June.
 - ❖ Fishermen are advised not to venture over Andaman Sea during 11th-15th June.
- Total suspension of fishing operations is suggested over above mentioned areas and dates.

ii. Weather conditions and forecast over Delhi/NCR during 11th June to 14th June, 2025 (Annexure VI)

For more details, kindly refer National Weather Bulletin:

https://mausam.imd.gov.in/responsive/all_india_forecast_bulletin.php

For District wise warnings refer: <https://mausam.imd.gov.in/responsive/districtWiseWarningGIS.php>



Significant weather reported during past 24 hours till 0830 hours IST of today:**Rainfall recorded (in cm) reported during past 24 hours till 0830 hours IST of today, the 11th June:**

- ❖ **Kerala & Mahe:** Sengulam Dam (dist Idukki) 14, Munnar (dist Idukki) 13, Idamalayar Dam (dist Ernakulam) 13, Thennala (dist Malappuram) 12, Vellathooval (dist Idukki) 11, Athirappalli (dist Thrissur) 10, Myladumpara (dist Idukki) 10, Pampadumpara (dist Idukki) 9, Idukki (dist Idukki) 8, Perumpavur (dist Ernakulam) 7, Nooranad (dist Alapuzha) 7, Vaikom (dist Kottayam) 7, Ponnani (dist Malappuram) 7, Kunnamkulam (dist Thrissur) 7, Kunnathanam (dist Pathanamthitta) 6;
- ❖ **Telangana:** Konijerla (dist Khammam) 12, Sirpur (t) (dist Kumaram Bheem) 11, Sathupalle (dist Khammam) 10, Tekulapalle (dist B. Kothagudem) 10, Thollada (dist Khammam) 7, Madhira (dist Khammam) 7, Armur (dist Nizamabad) 7, Bodhan (dist Nizamabad) 7;
- ❖ **Coastal Andhra Pradesh & Yanam:** Gudivada (dist Krishna) 11, Kaikalur (dist Eluru) 7, Masulipatnam Cdr (dist Krishna) 7, Eluru (dist Eluru) 6;
- ❖ **Tamil Nadu, Puducherry & Karaikal:** Avadi (dist Tiruvallur) 9, Chinnakalar (dist Coimbatore) 8, Valparai PTO (dist Coimbatore), Pelandurai (dist Cuddalore) 7 each;
- ❖ **Uttarakhand:** Sama-9, Ukhimath 7;
- ❖ **Tripura:** Sonamura (dist Sipahijala) 9, Sonamura Arg (dist Sipahijala) 8, Dm Office Arg (dist West Tripura) 6;
- ❖ **Chhattisgarh:** Kutaru (dist Bijapur) 7, Raipur City (dist Raipur) 6;
- ❖ **Odisha:** Ganjam (Ganjam) 7, Th Rampur (Kalahandi) 6, Jaipatna (Kalahandi) 6;
- ❖ **Assam:** Dinrugarh D C Office 7

Realised Gusty Winds (kmph) During Past 24 hours ending at 0830 hrs IST of today the 11th June:

- ❖ **Marathwada:** Hingoli 85, Parbhani 65, Beed (Ambejogai) 44;
- ❖ **Chhattisgarh:** Balod 65;
- ❖ **Andaman & Nicobar Islands:** Sri Vijaya Puram 62;
- ❖ **Tamilnadu Puducherry & Karaikal:** Natham 61, Namakkal 53, Erode 50, Veda sandur 48, New Chennai Township Private L 48, Meenambakkam 46, Tiruppur_Collector_Office 46;
- ❖ **Arunachal Pradesh:** Dirang 57, Lowertato 54, Anini 46, Tuting 37, Tawang 33;
- ❖ **Vidarbha:** Wardha 56;
- ❖ **West Madhya Pradesh:** Gwalior 53;
- ❖ **Madhya Maharashtra:** Jalgaon 50, Nashik (Kalwan) 43, Nandurbar (Shahada) 44;
- ❖ **East Madhya Pradesh:** Sagar 46;
- ❖ **Nagaland, Manipur, Mizoram & Tripura:** Kamalpur 46, Aizawl 41, Wokha 39, Dhalai 46, Unakuti 37, Sipahijala 33, Khowai 31;
- ❖ **Gangetic West Bengal:** Kolkata Airport 44, Ramsaday_College_Amta 39;
- ❖ **West Uttar Pradesh:** Agra 44;
- ❖ **Himachal Pradesh:** Kukumseri 43;
- ❖ **Uttarakhand:** Chamoli 43, Pantnagar 35, Ranichauri 33;
- ❖ **Konkan:** Sindhudurg (Devgad) 39;
- ❖ **Assam & Meghalaya:** Karimganj 37, Silchar_Jns_College 33, Dibrugarh 31, Goalpara 31, Tura 33;
- ❖ **Jammu:** Chatha 35;
- ❖ **Jharkhand:** Bokaro 33, Saraikela 31;
- ❖ **Bihar:** Aurangabad 31, Bhojpur 31, Iit_Patna 30, Saraiya 30;
- ❖ **Odisha:** Cuttack 30;

Temperature observations during past 24 hours till 0830 hours IST of today:

- ❖ Yesterday, Maximum temperatures are in the range of 43-47°C over most places of Rajasthan; few places over Madhya Pradesh; in isolated places over Punjab, Haryana-Chandigarh-Delhi. They were in the range of 39-43 °C over many places of Vidarbha, Chhattisgarh; few places of Jammu division, Uttar Pradesh, Bihar, Coastal Andhra Pradesh & Yanam, Gujarat state; isolated places over Odisha, Jharkhand, Telangana. They were in the range of 35-39°C over many places over Gangetic West Bengal, Marathwada; few places over Assam & Meghalaya, Tamil Nadu, Puducherry & Karaikal, Rayalaseema; at isolated places over Madhya Maharashtra, Nagaland, Manipur, Mizoram & Tripura and below 35 °C, elsewhere in the remaining part of the country. Yesterday, The highest maximum temperature of **47.6°C** was reported at **Bhatinda (Punjab)**.
- ❖ Yesterday, Maximum Temperature were **markedly above normal (> 5.1°C)** at many places over Assam & Meghalaya and Jammu-Kashmir-Ladakh-Gilgit-Baltistan-Muzaffarabad; at most places over Arunachal Pradesh and Punjab; at a few places over Sub Himalayan West Bengal & Sikkim, Haryana-Chandigarh-Delhi, Himachal Pradesh and East Madhya Pradesh; at isolated places over West Uttar Pradesh, West Rajasthan, East Rajasthan, West Madhya Pradesh, Vidarbha and Tamil Nadu, Puducherry & Karaikal; **appreciably above normal (3.1°C to 5.0°C)** at many places over Bihar and Uttarakhand; at a few places over Nagaland, Manipur, Mizoram & Tripura and East Uttar Pradesh; at isolated places over Gangetic West Bengal, Odisha and Kerala & Mahe; **above normal (1.6°C to 3.0°C)** at many places over Coastal Karnataka; at a few places over North Interior Karnataka and Lakshadweep; at isolated places over Jharkhand, Saurashtra & Kutch, Konkan & Goa, Madhya Maharashtra, Marathwada, Coastal Andhra Pradesh & Yanam and Telangana and **near normal (-1.5°C to 1.5°C)** at many places over Andaman & Nicobar Islands and Rayalaseema; at most places over Gujarat Region, Chhattisgarh and South Interior Karnataka.

Fig.1: Maximum Temperatures

Fig.2: Departure of Maximum Temperatures

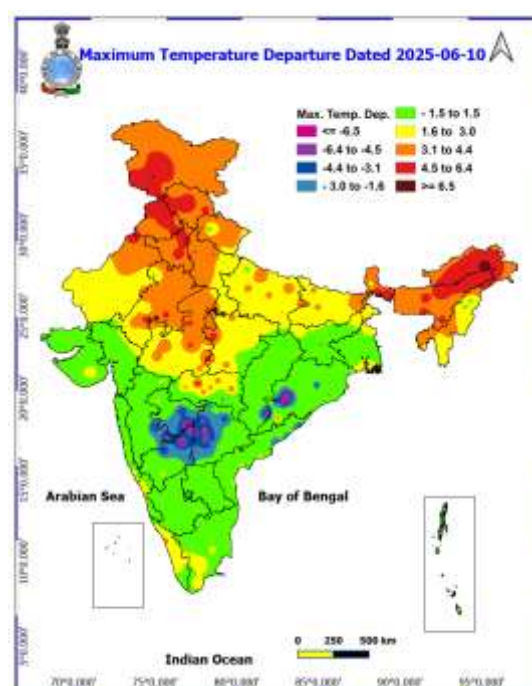
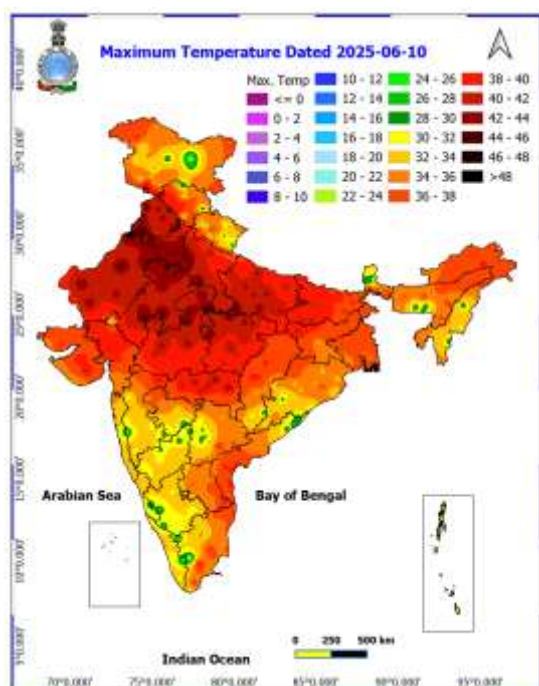
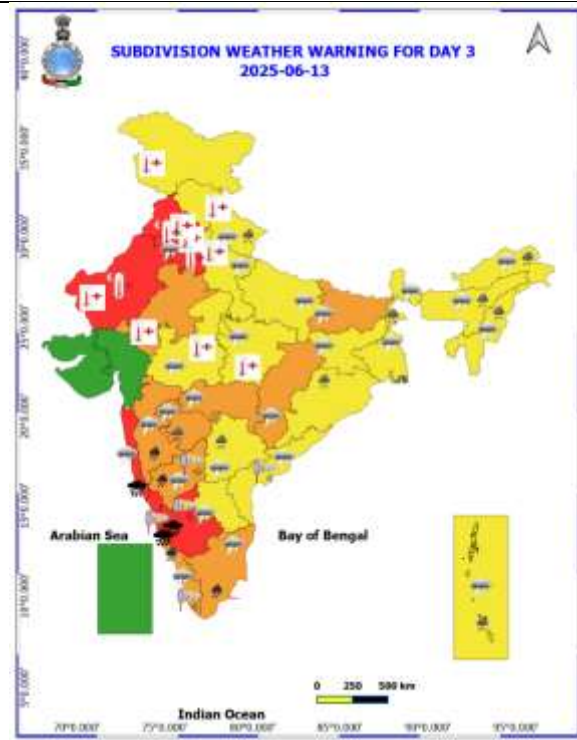
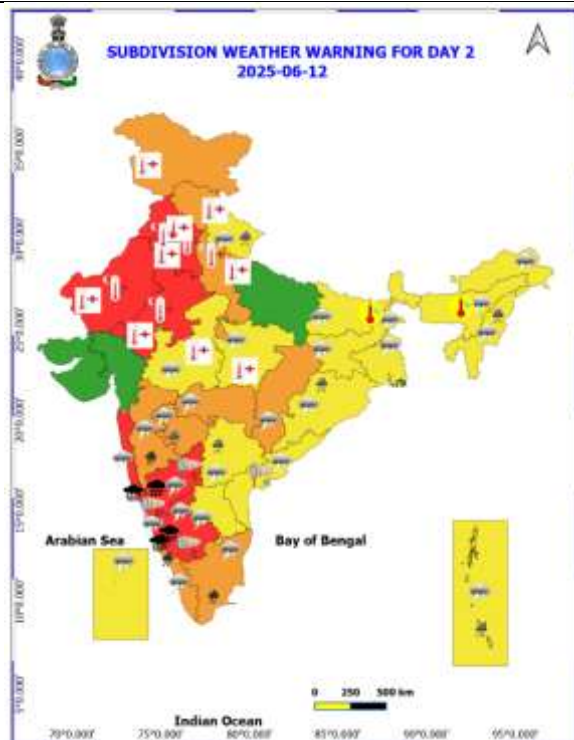
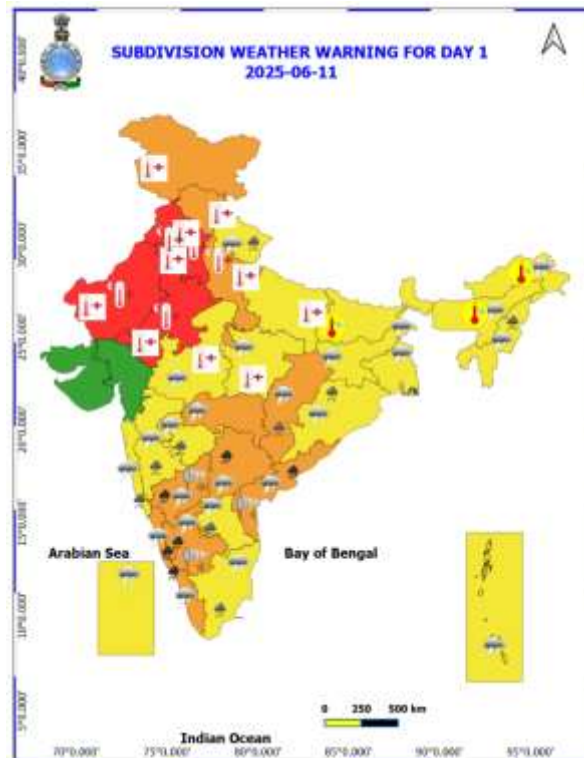
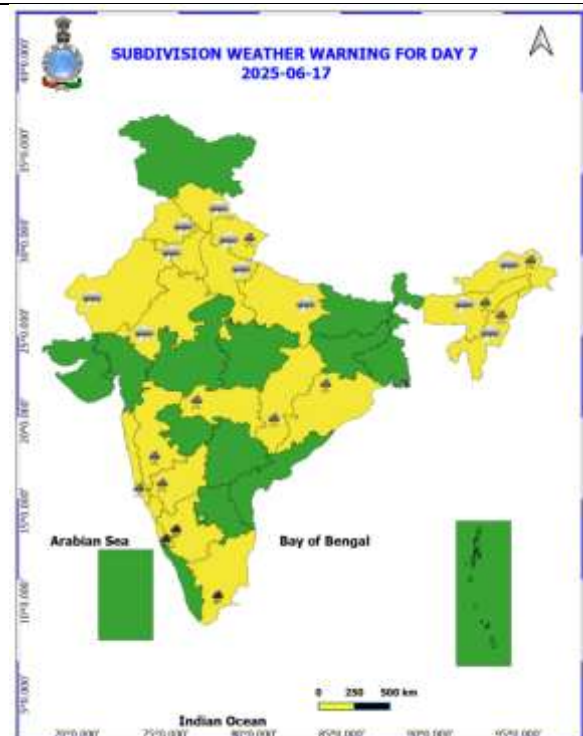
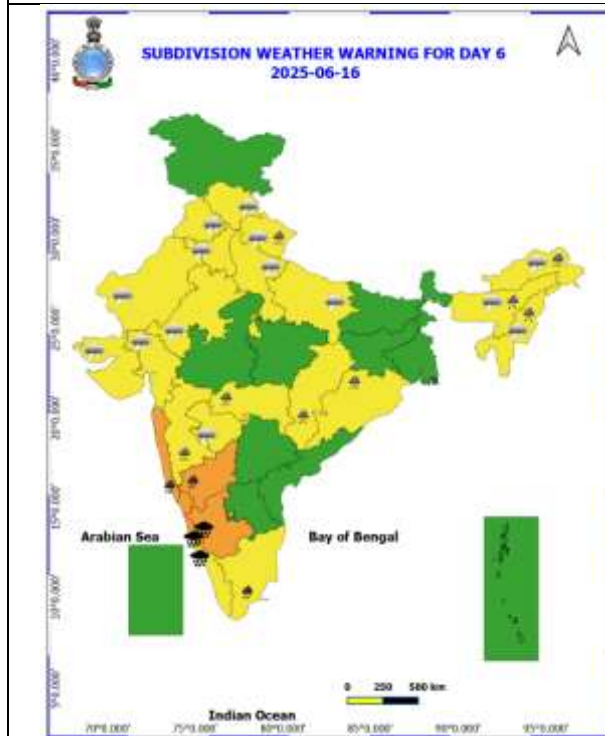
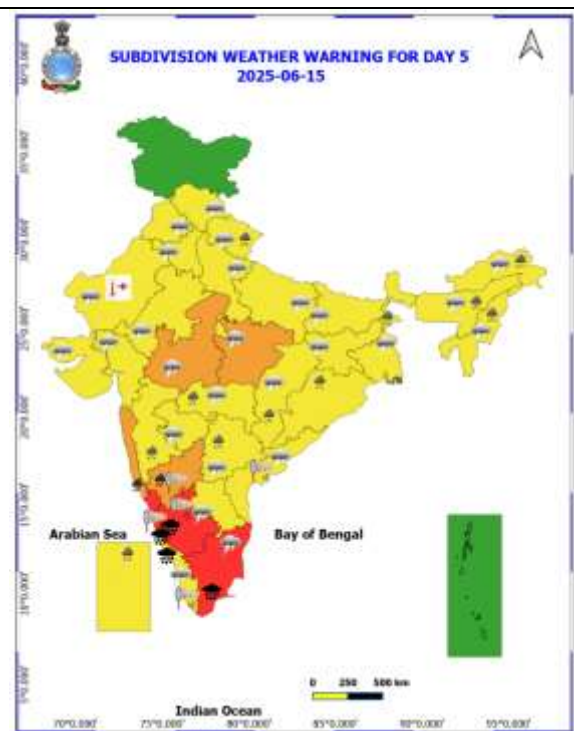
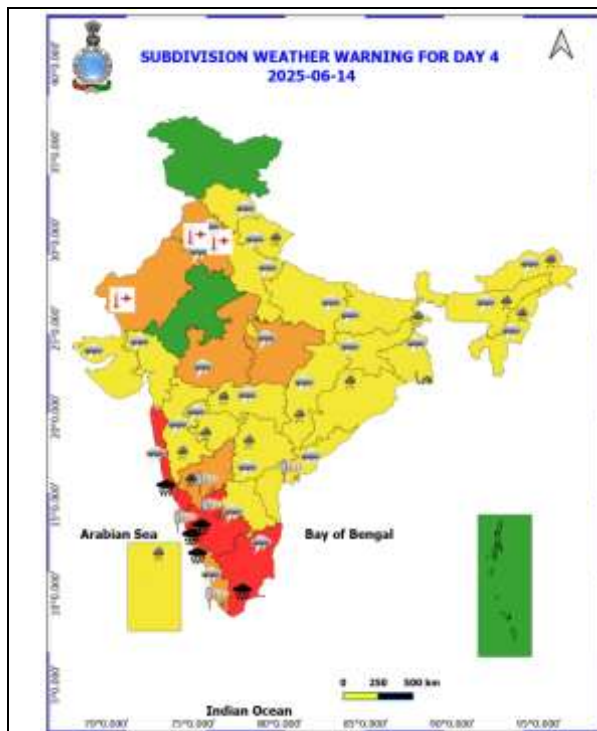


Table-1								
7 Days Rainfall Forecast								
S.No.	Subdivision	11- Jun	12- Jun	13- Jun	14- Jun	15- Jun	16- Jun	17- Jun
		Day 1	Day 2	Day 3	Day 4	Day 5	Day 6	Day 7
1	ANDAMAN & NICOBAR ISLANDS	WFS	WFS	FWS	FWS	FWS	FWS	FWS
2	ARUNACHAL PRADESH	ISOL	SCT	SCT	FWS	FWS	FWS	FWS
3	ASSAM & MEHGHALAYA	SCT	SCT	SCT	SCT	SCT	FWS	FWS
4	NAGALAND, MANIPUR, MIZORAM AND TRIPURA	FWS	SCT	SCT	FWS	FWS	FWS	FWS
5	SUB HIMALAYAN WEST BENGAL & SIKKIM	SCT	FWS	FWS	FWS	FWS	FWS	FWS
6	GANGETIC WEST BENGAL	SCT	FWS	FWS	FWS	FWS	FWS	FWS
7	ODISHA	SCT	SCT	SCT	SCT	SCT	SCT	SCT
8	JHARKHAND	SCT	SCT	SCT	FWS	FWS	FWS	FWS
9	BIHAR	SCT	FWS	SCT	SCT	SCT	SCT	SCT
10	EAST UTTAR PRADESH	ISOL	ISOL	ISOL	SCT	SCT	SCT	ISOL
11	WEST UTTAR PRADESH	ISOL	ISOL	ISOL	ISOL	ISOL	SCT	SCT
12	UTTARAKHAND	SCT	FWS	FWS	FWS	FWS	FWS	FWS
13	HARYANA, CHANDIGARH & DELHI	DRY	DRY	ISOL	ISOL	ISOL	ISOL	SCT
14	PUNJAB	DRY	DRY	DRY	ISOL	ISOL	ISOL	ISOL
15	HIMACHAL PRADESH	DRY	DRY	DRY	ISOL	SCT	SCT	SCT
16	JAMMU AND KASHMIR AND LADAKH	DRY	DRY	DRY	ISOL	ISOL	ISOL	ISOL
17	WEST RAJASTHAN	DRY	DRY	DRY	DRY	ISOL	ISOL	ISOL
18	EAST RAJASTHAN	DRY	DRY	ISOL	ISOL	ISOL	ISOL	ISOL
19	WEST MADHYA PRADESH	ISOL	ISOL	SCT	SCT	SCT	FWS	FWS
20	EAST MADHYA PRADESH	ISOL	ISOL	SCT	SCT	SCT	FWS	FWS
21	GUJRAT REGION	ISOL	ISOL	ISOL	ISOL	SCT	SCT	SCT
22	SAURASHTRA & KUTCH	ISOL	ISOL	ISOL	ISOL	ISOL	SCT	SCT
23	KONKAN & GOA	SCT	FWS	WFS	WFS	WFS	WFS	WFS
24	MADHYA MAHARASHTRA	ISOL	FWS	FWS	SCT	SCT	SCT	FWS
25	MARATHWADA	SCT	FWS	FWS	SCT	ISOL	ISOL	SCT
26	VIDARBHA	SCT	SCT	FWS	FWS	FWS	FWS	FWS
27	CHHATTISGARH	ISOL	SCT	SCT	FWS	FWS	FWS	FWS
28	COASTAL ANDHRA PRADESH	WFS	FWS	FWS	FWS	FWS	SCT	SCT
29	TELANGANA	FWS	FWS	FWS	FWS	FWS	FWS	FWS
30	RAYALASEEMA	WFS	WFS	FWS	SCT	SCT	FWS	SCT
31	TAMILNADU & PUDUCHERRY	SCT	SCT	SCT	SCT	SCT	SCT	ISOL
32	COSTAL KARNATAKA	WFS	WFS	WFS	WFS	WFS	WFS	WFS
33	NORTH INTERIOR KARNATAKA	WFS	WFS	WFS	WFS	WFS	WFS	WFS
34	SOUTH INTERIOR KARNATAKA	WFS	WFS	FWS	FWS	WFS	WFS	WFS
35	KERALA AND MAHE	WFS	WFS	WFS	WFS	WFS	WFS	WFS
36	LAKSHADWEEP	WFS	WFS	WFS	WFS	WFS	WFS	WFS

- As the lead period increases forecast accuracy decreases.





- Action may be taken based on ORANGE AND REDCOLOUR warnings.
- Vulnerable regions likely urban and hilly areas action may be initiated for heavy rainfall warning.
- As the lead period increases forecast accuracy decreases.

Detailed districtwise Multi Hazard weather warning for next five days available at
<https://mausam.imd.gov.in/responsive/districtWiseWarningGIS.php>

Weather forecast over Delhi/NCR during 11th to 14th June 2025

Past Weather:

There has been a no significance change in the minimum temperature and slight rise in the maximum temperature over Delhi/NCR during the past 24 hours. The maximum and minimum temperatures over Delhi were around 44 to 45°C and 26 to 29° respectively. The minimum temperature was near normal and the maximum temperature was above normal up to 4 - 5°C. Mainly clear sky conditions with predominant surface wind from the west/northwest direction with wind speeds up to 20 kmph gusting to 32 kmph prevailed during the past 24 hours. Mainly clear sky conditions with wind speed less than 20 kmph from the west direction prevailed over the region in the forenoon today.

Weather Forecast:

11.06.2025: Mainly clear sky. Heat wave conditions at most places. Dust rising surface winds 20 – 30 kmph occasionally gusting to 40 kmph. The maximum temperatures over Delhi are likely to be in the range of 44 to 46°C. The maximum temperature will be above normal up to 4 - 6°C. The predominant surface wind will likely be from the northwest direction with a wind speed of less than 20 kmph in the afternoon. The wind speed will gradually increase becoming 20-22 kmph from the northwest direction during evening and night.

12.06.2025: Mainly clear sky becoming partly cloudy sky towards evening/night. Heat wave conditions at few places. Very light to light rain/thunderstorm/lighting accompanied with gusty winds 40 -50 kmph temporary reaching 60 kmph during thunderstorm with dust rising winds towards evening/night. The maximum and minimum temperatures over Delhi are likely to be in the range of 43 to 45°C and 26 to 28°C respectively. The minimum temperature will be below normal up to 1 - 2°C and the maximum temperature will be above normal up to 3 - 5°C. The predominant surface wind will likely be from the north direction with a wind speed of less than 15 kmph during the morning hours. The wind speed will gradually decrease becoming 10-14 kmph from the north direction in the afternoon. It will decrease becoming less than 10 kmph from the northeast direction during evening and night.

13.06.2025: Partly cloudy sky. Heat wave conditions at isolated places. Very light to light rain/thunderstorm/lighting accompanied with gusty winds 40 -50 kmph temporary reaching 60 kmph during thunderstorm with dust rising winds. The maximum and minimum temperatures over Delhi are likely to be in the range of 43 to 45°C and 27 to 29°C respectively. The minimum temperature will be near normal and the maximum temperature will be above normal up to 2 - 4°C. The predominant surface wind will likely be from the northeast direction with a wind speed of less than 15 kmph during the morning hours. The wind speed will gradually decrease becoming less than 12 kmph from the northeast direction in the afternoon. It will increase to less than 15 kmph from the southeast direction during the evening and night.

14.06.2025: Partly cloudy sky. Very light to light rain/thunderstorm/lighting accompanied with gusty winds 40 -50 kmph temporary reaching 60 kmph during thunderstorm. The maximum and minimum temperatures over Delhi are likely to be in the range of 40 to 42°C and 27 to 29°C respectively. The minimum temperature will be near normal and the maximum temperature will be above normal up to 1 - 2°C. The predominant surface wind will likely be from the southeast direction with a wind speed of less than 20 kmph during the morning hours. The wind speed will gradually decrease becoming less than 10 kmph from the southeast direction in the afternoon. It will increase to less than 15 kmph from the southeast direction during the evening and night.

Impact expected and Action Suggested:

- Be cautious and take precautionary measures though there is likelihood of heat wave conditions. There is likelihood of heat related impact to vulnerable population as the temperatures are likely to be above normal.
- Moderate health concern for vulnerable people e.g. infants, elderly people with chronic diseases.
- Avoid heat exposure, wear light weight, light colored, loose, cotton clothes, cover your head, use a cloth, hat or umbrella.
- Due to clear sky and strong sunlight insolation with heat wave conditions, the surface ozone will be predominated over isolated places, may cause discomfort to most of the people on prolonged exposure.

Impact & Action Suggested due to extremely heavy falls/ very heavy rainfall:

- ✓ **Extremely heavy rainfall** over Kerala & Mahe during 14th-16th; Coastal & South Interior Karnataka during 12th-16th; North Interior Karnataka on 12th, Tamilnadu Puducherry & Karaikal on 14th & 15th; Konkan & Goa during 12th-14th June.
- ✓ **Very heavy rainfall** over Tamilnadu Puducherry & Karaikal during 12th-17th; Kerala & Mahe on 12th & 13th, Karnataka during 11th-17th; Coastal Andhra Pradesh & Yanam, Telangana on 11th; Konkan & Goa on 15th & 16th and Madhya Maharashtra on 12th & 13th June

Impact Expected

- Localized Flooding of roads, water logging in low lying areas and closure of underpasses mainly in urban areas of the above region.
- Occasional reduction in visibility due to heavy rainfall.
- Disruption of traffic in major cities due to water logging in roads leading to increased travel time.
- Minor damage to kutcha roads.
- Possibilities of damage to vulnerable structure.
- Localized Landslides/Mudslides/landslips/mudslips/landsinks/mudsinks.
- Damage to horticulture and standing crops in some areas due to inundation.
- It may lead to riverine flooding in some river catchments (for riverine flooding please visit Web page of CWC)

Action Suggested

- Check for traffic congestion on your route before leaving for your destination.
- Follow any traffic advisories that are issued in this regard.
- Avoid going to areas that face the water logging problems often.
- Avoid staying in vulnerable structure.

Impact expected and action suggested due to Severe heat wave/ Heat wave condition:

- ❖ **Heat wave condition** at many/some places over Jammu-Kashmir, Punjab, Haryana Chandigarh & Delhi during 11th-14th with **severe heat wave conditions** at isolated/some parts on 11th & 12th June.
- ❖ **Heat wave condition** at many/some places over Himachal Pradesh & East Rajasthan during 11th-13th with **severe heat wave conditions** at isolated/some parts on 11th & 12th June.
- ❖ **Heat wave condition** at many/some places over West Rajasthan during 11th-15th with **severe heat wave conditions** at isolated/some parts during 11th-13th June.
- ❖ **Heat wave conditions** in isolated/some places over West Uttar Pradesh on 11th & 12th; East Uttar Pradesh on 11th June.

Red alert Areas

- Very high likelihood of developing heat illness and heat stroke in all ages.
- Extreme care needed for vulnerable people.

Orange alert Areas:

- High temperature & increased likelihood of heat illness symptoms in people who are either exposed to sun for a prolonged period or doing heavy work.
- High health concern for vulnerable people e.g. infants, elderly, people with chronic diseases.
- Avoid heat exposure– keep cool. Avoid dehydration.
- Drink sufficient water- even if not thirsty.
- Use ORS, homemade drinks like lassi, torani (rice water), lemon water, buttermilk, etc. to keep yourself hydrated.

Yellow alert Areas:

- Moderate temperature & heat is tolerable for general public but moderate health concern likely for vulnerable people e.g. infants, elderly, people with chronic diseases.
- Avoid heat exposure.
- Wear lightweight, light colour, loose, cotton clothes.
- Cover your head, use a cloth, hat or umbrella.

Impact expected and action suggested due to isolated thunderstorm with lightning/gusty & Squally winds over

- ✓ **Thundersquall (wind speed reaching 50-60 kmph gusting to 70 kmph)** at isolated places over Madhya Maharashtra, Marathwada, Konkan & Goa during 12th-14th; Madhya Pradesh on 14th & 15th; Vidarbha, Chhattisgarh during 11th-13th, Bihar on 13th; Rajasthan during 14th-17th June.
- ✓ **Strong surface winds** (speed 50-60 kmph) over Tamil Nadu Puducherry & Karaikal, Kerala & Mahe, Coastal Andhra Pradesh & Yanam and Karnataka during 12th-15th June.

Impact expected:

- Breaking of tree branches, uprooting of large avenue trees. Large dead limbs blown from trees. Damage to Standing crops.
- Minor to Major damage to banana and papaya trees.
- Minor to major damage to power and communication lines due to breaking of branches.
- Strong wind/hail may damage plantation, horticulture and standing crops.
- Partial damage to vulnerable structures due to strong winds.
- Minor damage to kutcha houses/walls and huts.
- Loose objects may fly.

Action suggested:

- People are advised to keep a watch on the weather for worsening conditions and be ready to move to safer places accordingly.
- Stay indoors, close windows & doors and avoid travel if possible.
- Take safe shelters; do not take shelter under trees.
- Do not lie on concrete floors and do not lean against concrete walls.
- Unplug electrical/ electronic appliances.
- Immediately get out of water bodies.
- Keep away from all the objects that conduct electricity.

Agromet advisories for likely impact of Heavy Rainfall / Gusty Winds / Heat Wave

- Drain out excess water and ensure proper drainage in standing crops, vegetables and orchards in **Tamil Nadu, Kerala, Karnataka, Andhra Pradesh, Telangana, Konkan & Goa, Madhya Maharashtra, Marathwada, Chhattisgarh, Uttarakhand, Odisha, Andaman & Nicobar Islands** and NMMT.
- Shift the harvested produce in safer places or cover the produce with tarpaulin sheets in the fields. Tie the harvested crops properly and cover them to minimise the risk of displacement due to strong surface winds.
- Provide mechanical support and propping to horticultural crops and staking to vegetables to avoid lodging.
- In **Jammu & Kashmir, Himachal Pradesh, Punjab, Haryana, Uttar Pradesh, Rajasthan** and **Madhya Pradesh** apply light and frequent irrigation in the evening to protect standing crops, vegetables and orchards from the adverse effects of heat waves and high temperatures. Undertake mulching with crop residue, straw, polythene or soil to conserve soil moisture.

Livestock / Poultry / Fishery

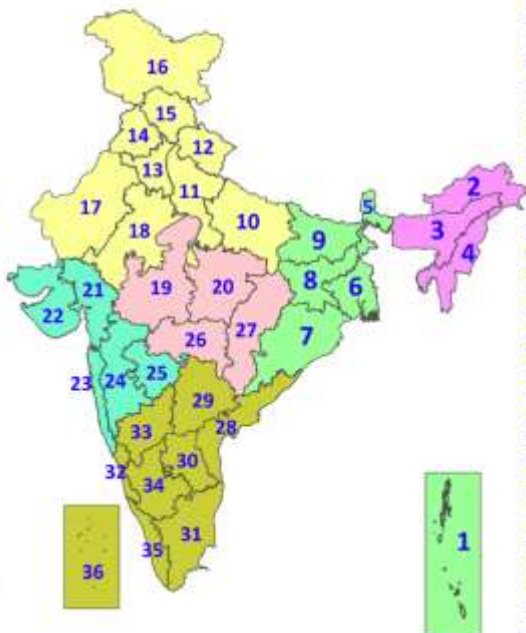
- Keep the animals inside the shed during heavy rainfall and provide them balanced feed.
- Store feed and fodder in a safe place to prevent spoilage.
- Construct an outlet with proper netting around the ponds to drain out excess water, thereby preventing fish from escaping in case of overflow.
- To reduce the effect of heat wave/high temperature, cover the roof of poultry sheds with grass. Also, provide clean, hygienic and plenty of drinking water to animals.

Legends & abbreviations:

- ❖ **Heavy Rain:**64.5-115.5mm; **Very Heavy Rain:**115.6-204.4mm; **Extremely Heavy Rain:** >204.4mm.
- ❖ **Obsy:** Observatory; Automatic Weather Station; **ARG:** Automatic Rain Gauge; **dist:** District; **NH:** National Highway; **KVK:** Krishi Vigyan Kendra; **DVC:** Damodar Valley Corporation; **PTO:** Part Time Office, **Aero:** Aerodrome, **IAF:** Indian Air Force.
- ❖ **Region wise classification of meteorological Sub-Divisions:**
 - **Northwest India:** Western Himalayan Region (Jammu-Kashmir-Ladakh-Gilgit-Baltistan-Muzaffarabad, Himachal Pradesh and Uttarakhand); Punjab, Haryana-Chandigarh-Delhi; West Uttar Pradesh, East Uttar Pradesh, West Rajasthan and East Rajasthan.
 - **Central India:** West Madhya Pradesh, East Madhya Pradesh, Vidarbha and Chhattisgarh.
 - **East India:** Bihar, Jharkhand, Sub-Himalayan West Bengal & Sikkim; Gangetic West Bengal, Odisha and Andaman & Nicobar Islands.
 - **Northeast India:** Arunachal Pradesh, Assam & Meghalaya and Nagaland, Manipur, Mizoram & Tripura.
 - **West India:** Gujarat Region, Saurashtra & Kutch, Konkan & Goa, Madhya Maharashtra and Marathawada.
 - **South India:** Coastal Andhra Pradesh & Yanam, Telangana, Rayalaseema, Coastal Karnataka, North Interior Karnataka, South Interior Karnataka, Kerala & Mahe, Tamil Nadu, Puducherry & Karaikal and Lakshadweep.

LEGENDS

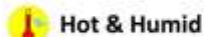
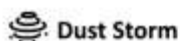
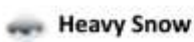
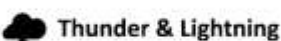
1. अंडमान और निकोबार द्वीपसमूह
2. अरुणाचल प्रदेश
3. असम और मेघालय
4. नागालैंड, मणिपुर, मिजोरम और त्रिपुरा
5. उप-हिमालयी पश्चिम बंगाल और सिक्किम
6. गंगीय पश्चिम बंगाल
7. ओडिशा
8. झारखंड
9. बिहार
10. पूर्वी उत्तर प्रदेश
11. पश्चिम उत्तर प्रदेश
12. उत्तराखंड
13. हरियाणा, चंडीगढ़ और दिल्ली
14. पंजाब
15. हिमाचल प्रदेश
16. जम्मू और कश्मीर और लद्दाख
17. पश्चिम राजस्थान
18. पूर्वी राजस्थान
19. पश्चिम मध्य प्रदेश
20. पूर्वी मध्य प्रदेश
21. गुजरात
22. सौराष्ट्र
23. कोंकण और गोवा
24. मध्य महाराष्ट्र
25. मराठवाड़ा
26. विदर्भ
27. छत्तीसगढ़
28. तटीय आंध्र प्रदेश और यनम
29. तेलंगाना
30. रायलसीमा
31. तमिलनाडु, पुडुचेरी और कराईकल
32. तटीय कर्नाटक
33. आंतरिक उत्तरी कर्नाटक
34. आंतरिक दक्षिणी कर्नाटक
35. केरल और माहे
36. लक्षद्वीप



1. Andaman & Nicobar Islands
2. Arunachal Pradesh
3. Assam & Meghalaya
4. Nagaland, Manipur, Mizoram & Tripura
5. Sub-Himalayan West Bengal & Sikkim
6. Gangetic West Bengal
7. Odisha
8. Jharkhand
9. Bihar
10. East Uttar Pradesh
11. West Uttar Pradesh
12. Uttarakhand
13. Haryana, Chandigarh & Delhi
14. Punjab
15. Himachal Pradesh
16. Jammu & Kashmir and Ladakh
17. West Rajasthan
18. East Rajasthan
19. West Madhya Pradesh
20. East Madhya Pradesh
21. Gujarat
22. Saurashtra
23. Konkan & Goa
24. Madhya Maharashtra
25. Marathwada
26. Vidarbha
27. Chhattisgarh
28. Coastal Andhra Pradesh & Yanam
29. Telangana
30. Rayalaseema
31. Tamilnadu, Puducherry & Karaikal
32. Coastal Karnataka
33. North Interior Karnataka
34. South Interior Karnataka
35. Kerala & Mahe
36. Lakshadweep

SPATIAL DISTRIBUTION (% of Stations reporting)

% Stations	Category	% Stations	Category
76-100	Widespread (WS/Most Places)	26-50	Scattered (SCT/A Few Places)
51-75	Fairly Widespread (FWS/Many Places)	1-25	Isolated (ISOL)



COLOUR CODED WARNING

No Warning (No Action)
Watch (Be Aware)
Alert (Be Prepared To Take Action)
Warning (Take Action)

Probabilistic Forecast

Terms	Probability of Occurrence (%)
Unlikely	< 25
Likely	25 - 50
Very Likely	50 - 75
Most Likely	> 75

* Red colour warning does not mean "Red Alert", Red colour warning means "Take Action".
Forecast and Warning for any day is valid from 0830 hours IST of day till 0830 hours IST of next day.
For more details, kindly visit <https://mausam.imd.gov.in> or contact: 011-2434-4599
(Service to the Nation since 1875)

DEFINITION/CRITERIA

Rain/ Snow *

Heavy: 64.5 to 115.5 mm/cm *
Very Heavy: 115.6 to 204.4 mm/cm *
Extremely Heavy: > 204.4 mm/cm *

Heat Wave

When maximum temperature of a station reaches $\geq 40^{\circ}\text{C}$ for plains and $\geq 30^{\circ}\text{C}$ for hilly regions
(a) Based on Departure from normal

Heat Wave: Maximum Temperature Departure from normal 4.5°C to 6.4°C .

Severe Heat Wave: Maximum Temperature Departure from normal $\geq 6.5^{\circ}\text{C}$

(b). Based on Actual maximum temperature

Heat Wave: When actual maximum temperature $\geq 45^{\circ}\text{C}$.

Severe Heat Wave: When actual maximum temperature $\geq 47^{\circ}\text{C}$.

(c). Criteria for heat wave for coastal stations

When maximum temperature departure is $> 4.5^{\circ}\text{C}$ from normal. Heat Wave may be described provided maximum temperature $\geq 37^{\circ}\text{C}$.

Warm Night

When maximum temperature remains 40°C

Warm Night: When minimum temperature departure 4.5°C to 6.4°C .

Severe Warm Night: When minimum temperature departure $> 6.4^{\circ}\text{C}$.

Cold Wave

When minimum temperature of a station $\leq 10^{\circ}\text{C}$ for plains and $\leq 0^{\circ}\text{C}$ for hilly regions.

(a). Based on departure

Cold Wave: Minimum Temperature Departure from normal -4.5°C to -6.4°C .

Severe Cold Wave: Minimum Temperature Departure from normal $\leq -6.5^{\circ}\text{C}$

(b) Based on actual Minimum Temperature (for Plains only)

Cold Wave: When Minimum Temperature is $\leq 4.0^{\circ}\text{C}$

Severe Cold Wave: When Minimum Temperature is $\leq 2.0^{\circ}\text{C}$

(c) For Coastal Stations

When Minimum Temperature departure is $\leq -4.5^{\circ}\text{C}$ & actual Minimum Temperature is $\leq 15^{\circ}\text{C}$

Cold Day

When minimum temperature of a station $\leq 10^{\circ}\text{C}$ for plains and $\leq 0^{\circ}\text{C}$ for hilly regions

Based on departure

Cold Day: Maximum Temperature Departure from normal -4.5°C to -6.4°C .

Severe Cold Day: Maximum Temperature Departure from normal $\leq -6.5^{\circ}\text{C}$

Fog

Phenomenon of small droplets suspended in air and the horizontal visibility $< 1\text{km}$

Moderate Fog: When the visibility between 500-200 metres

Dense Fog: when the visibility between 50- 200 metres

Very Dense Fog: when the visibility < 50 metres

Thunderstorm

Sudden electrical discharges manifested by a flash of light (Lightning) and a sharp rumbling sound (thunder)

Dust/Sand Storm

An ensemble of particles of dust or sand energetically lifted to great heights by a strong and turbulent wind.

Frost

Ice deposits on ground

Air temperature $\leq 4^{\circ}\text{C}$ (over Plains)

Squall

A strong wind that rises suddenly, lasts for atleast 1 minute.

Moderate: Wind speed 52-61 kmph

Severe: Wind speed 62-67 kmph

Very Severe: Wind speed > 67 kmph

Sea State

Effect of various waves in the sea over specific area

Rough to very rough: Wind speed 41-62 kmph (22-33 knots) & Wave height 2.5-6 metre

High to very high: Wind speed 63-117 kmph (34-63 knots) & Wave height 6-14 metre

Phenomenal: Wind speed > 117 kmph (> 63 knots) & Wave height > 14 metre

Cyclone

Cyclonic Storm: Wind speed 62-87 kmph (34-47 knots)

Severe Cyclonic Storm: Wind speed 88-117 kmph (48-63 knots)

Very Severe Cyclonic Storm: Wind speed 118-165 kmph (64 - 89 knots)

Extremely Severe Cyclonic Storm: Wind speed 166-220 kmph (90 -119 knots)

Super Cyclone Storm: Wind speed > 220 kmph (> 119 knots)

* Red colour warning does not mean "Red Alert", Red colour warning means "Take Action".

Forecast and Warning for any day is valid from 0830 hours IST of day till 0830 hours IST of next day.

For more details, kindly visit <https://mausam.imd.gov.in> or contact: 011-2434-4599

(Service to the Nation since 1875)

Hot and Humid: When maximum temperatures remain 3°C above normal along with the above normal relative humidity.