



Government of India
Ministry of Earth Sciences
India Meteorological Department



Press Release

Date: 12th June, 2025

Time of Issue: 1400 hours IST

Subject: (i) Monsoon likely to be in active phase with heavy to very heavy rainfall at a few places and extremely heavy falls at isolated places over south peninsular India during 12th-17th June and over Konkan & Goa during 12th-14th June, 2025.
(ii) Heat Wave to severe heat wave conditions are likely to continue over Northwest India including Western Himalayan Region during next 2 days and reduce thereafter.

Southwest Monsoon: (Annexure I):

- ❖ The Northern Limit of Monsoon continues to pass through 17.0°N/55°E, 17.5°N/60°E, 18°N/65°E, 18.5°N/70°E, Mumbai, Ahilyanagar, Adilabad, Bhawanipatna, Puri, Sandhead Island, 23.5°N/89.5°E, Balurghat, 30°N/85°E.
- ❖ Conditions are favourable for further advancement of Southwest monsoon over some more parts of Central & adjoining East India (including some more parts of Vidarbha, Chhattisgarh & Odisha) during next 48 hours.

Realised weather during past 24 hours till 0830 hours IST of today, the 12th June, 2025 (Annexure II):

- ❖ **Heat wave conditions** prevailed at many places with **severe heat wave conditions** at isolated places over Jammu-Kashmir, West Rajasthan; **Heat wave conditions** at many places over Punjab at isolated places over, Himachal Pradesh, Haryana, Uttar Pradesh, East Rajasthan, West Madhya Pradesh.
- ❖ **Warm night conditions** in isolated pockets of Jammu-Kashmir, Punjab, Haryana, East Uttar Pradesh, East Rajasthan, Madhya Pradesh.
- ❖ **Hailstorm** has been observed at isolated places over Vidarbha, East Madhya Pradesh.
- ❖ **Heavy to very heavy rainfall** at some places **with extremely heavy falls** recorded at isolated places over Coastal Karnataka.
- ❖ **Heavy to very heavy rainfall** has been recorded at isolated places over Konkan & Goa, Coastal Karnataka and North Interior Karnataka.; **Heavy rainfall** at a few places over Coastal Karnataka and at isolated places over Assam & Meghalaya, Nagaland, Manipur, Mizoram & Tripura, Odisha, Uttarakhand, Telangana, Rayalaseema, Tamil Nadu, Puducherry & Karaikal, South Interior Karnataka and Kerala & Mahe.
- ❖ **Thunderstorm accompanied with Squally/Gusty winds** with speed 60-90 kmph at isolated places over Madhya Maharashtra, Marathawada, Vidarbha, Tamilnadu Puducherry & Karaikal; with speed 30-60 kmph at isolated places over Assam & Meghalaya, Arunachal Pradesh, West Madhya Pradesh, Haryana, Himachal Pradesh, Andaman & Nicobar Islands, Gangetic West Bengal, Odisha, East Madhya Pradesh, Konkan & Goa, Jharkhand, Punjab, West Uttar Pradesh, Jammu-Kashmir, Bihar.

For more details of realised weather, kindly refer **Annexure II**,

Detailed observations of Maximum Temperature during past 24 hours till 0830 hours IST of today are appended in **Annexure III**.

i. Weather Systems, Forecast and Warnings (refer to Annexure IV & V):

- ❖ An **upper air cyclonic circulation** lies over Punjab & neighbourhood and a **trough** runs from this cyclonic circulation to southeast Madhya Pradesh in lower tropospheric levels.
- ❖ An **upper air cyclonic circulation** lies over West Uttar Pradesh and another over West Rajasthan in lower tropospheric levels.

- ❖ An **upper air cyclonic circulation** lies over north coastal Andhra Pradesh & adjoining south Odisha in lower & middle tropospheric levels.
- ❖ A trough runs from the above cyclonic circulation to coastal Karnataka in lower & middle tropospheric levels.
- ❖ The Western Disturbance as a trough in middle tropospheric westerlies now runs roughly along Long. 62°E to the north of Lat. 28°N.
- ❖ Under the influence of these systems, the following weather is likely:

South Peninsular India:

- ✓ Light/moderate rainfall at most/many places over Kerala & Mahe, Karnataka, Lakshadweep during next 7 days and Light/moderate rainfall at many/some places accompanied with isolated **thunderstorm, lightning & gusty winds speed reaching 30-50 kmph** over Tamilnadu Puducherry & Karaikal, Kerala & Mahe on 12th & 13th, Coastal Karnataka, Telangana during 12th-16th June.
- ✓ **Strong surface winds** (speed 50-60 kmph) very likely over Kerala & Mahe during 14th-16th, Interior Karnataka, Coastal Andhra Pradesh & Yanam, Rayalaseema during 12th-16th June.
- ✓ Isolated **heavy rainfall** likely over Tamilnadu Puducherry & Karaikal on 12th; Lakshadweep on 14th & 15th, Coastal Andhra Pradesh & Yanam, Telangana during 12th-18th, Rayalaseema on 12th & 13th with **very heavy rainfall** over Tamilnadu Puducherry & Karaikal during 13th-17th, Kerala & Mahe, Karnataka during 12th-18th, with **Extremely heavy rainfall** likely over North Interior Karnataka on 12th, Tamilnadu Puducherry & Karaikal on 14th & 15th, Kerala & Mahe during 14th-17th, Coastal & South interior Karnataka during 12th-16th June.

West India:

- ✓ Light/moderate rainfall at some/isolated places accompanied with accompanied with **thunderstorm, lightning & gusty winds speed reaching 30-40 kmph** likely over Madhya Maharashtra, Marathawada, Konkan & Goa during 12th-16th; Gujarat State during 12th-15th June with **Thundersquall (wind speed reaching 50-60 kmph gusting to 70 kmph)** very likely at isolated places over Konkan & Goa, Madhya Maharashtra, Marathawada during 12th-14th June.
- ✓ Isolated **heavy rainfall** likely over Madhya Maharashtra on 14th & 15th, Marathawada during 12th-14th with **very heavy rainfall** on Konkan & Goa during 16th-18th; ghat areas of Madhya Maharashtra on 12th & 13th and during 16th-18th June with **Extremely heavy rainfall** likely over Konkan & Goa during 12th-15th June.

East & Central India:

- ✓ Light/moderate rainfall at some places likely to continue over Sub-Himalayan West Bengal & Sikkim during next 7 days and Light/moderate rainfall at isolated/some places accompanied with **thunderstorm, lightning & gusty winds speed reaching 40-50 kmph** likely over Bihar, Jharkhand, Odisha, Vidarbha, Chhattisgarh, Madhya Pradesh, West Bengal & Sikkim during 12th-16th June with **Thundersquall (wind speed reaching 50-60 kmph gusting to 70 kmph)** very likely at isolated places over Madhya Pradesh during 14th-16th, Vidarbha during 12th-16th, Chhattisgarh on 12th & 13th, Bihar on 14th June.
- ✓ Isolated **heavy rainfall** also likely over Madhya Pradesh during 15th-18th, Vidarbha, Chhattisgarh during 14th-18th, Andaman & Nicobar Islands on 12th & 13th, Sub-Himalayan West Bengal & Sikkim during 13th-15th, Gangetic West Bengal on 16th & 17th, Jharkhand on 18th, Odisha during 12th-18th June with **very heavy rainfall** over Sub-Himalayan West Bengal & Sikkim on 14th and over Odisha on 16th June.

Northwest India:

- ✓ Light/moderate rainfall at some/isolated places accompanied with accompanied with **thunderstorm, lightning & gusty winds speed reaching 40-50 kmph** likely Uttarakhand during 12th-18th, Himachal Pradesh during 15th-18th; Punjab, Haryana, Uttar Pradesh, Rajasthan during 13th-17th June with **Thundersquall (wind speed reaching 50-60 kmph gusting to 70 kmph)** very likely at isolated places over East Rajasthan on 14th & 15th June.
- ✓ Isolated **heavy rainfall** likely over Uttarakhand during 12th-18th June.
- ✓ **Dust storm** likely over West Rajasthan during 14th-18th June.

Northeast India:

- ✓ Light/moderate rainfall at many/some places accompanied with **thunderstorm, lightning & gusty winds speed reaching 30-40 kmph** likely to continue over northeast India during next 7 days with **isolated heavy rainfall** over Arunachal Pradesh during 14th-18th, Assam & Meghalaya, Nagaland, Manipur, Mizoram & Tripura during 12th-18th with **very heavy rainfall** on Arunachal Pradesh on 18th, Assam & Meghalaya during 16th-18th, Nagaland, Manipur, Mizoram & Tripura on 17th & 18th June.

Maximum Temperature Forecast:

- ❖ No significant change in maximum temperatures likely over Northwest & Central India during next 2-3 days and gradual fall by 2-4°C thereafter.
- ❖ No significant change in maximum temperatures likely over East India during next 24 hours and gradual fall by 2-3°C thereafter for subsequent 4 days and no significant change thereafter.
- ❖ No significant change in maximum temperatures likely over rest parts of the country.

Heat wave, Hot & Humid weather and Warn Night warnings:

- ❖ **Heat wave condition** very likely at many/some places over Himachal Pradesh & East Rajasthan during 12th-14th with **severe heat wave conditions** at isolated/some parts on 12th June.
- ❖ **Heat wave condition** very likely at many/some places over West Rajasthan during 12th-15th with **severe heat wave conditions** at isolated/some parts during 12th-14th June.
- ❖ **Heat wave conditions** very likely in some/many places over Jammu-Kashmir, West Uttar Pradesh, Punjab, Haryana Chandigarh & Delhi during 12-14th, East Uttar Pradesh, Madhya Pradesh on 12th & 13th June.
- ❖ **Hot & humid weather** is likely to prevail over Arunachal Pradesh, Assam & Meghalaya, Bihar on 12th & 13th; Nagaland, Manipur, Mizoram & Tripura on 12th & 14th June.
- ❖ **Warm night conditions** very likely in isolated pockets over Punjab, Haryana, West Rajasthan, West Madhya Pradesh on 12th & 13th, Uttar Pradesh, East Rajasthan on 12th, East Madhya Pradesh on 13th June.

Fishermen Warnings:

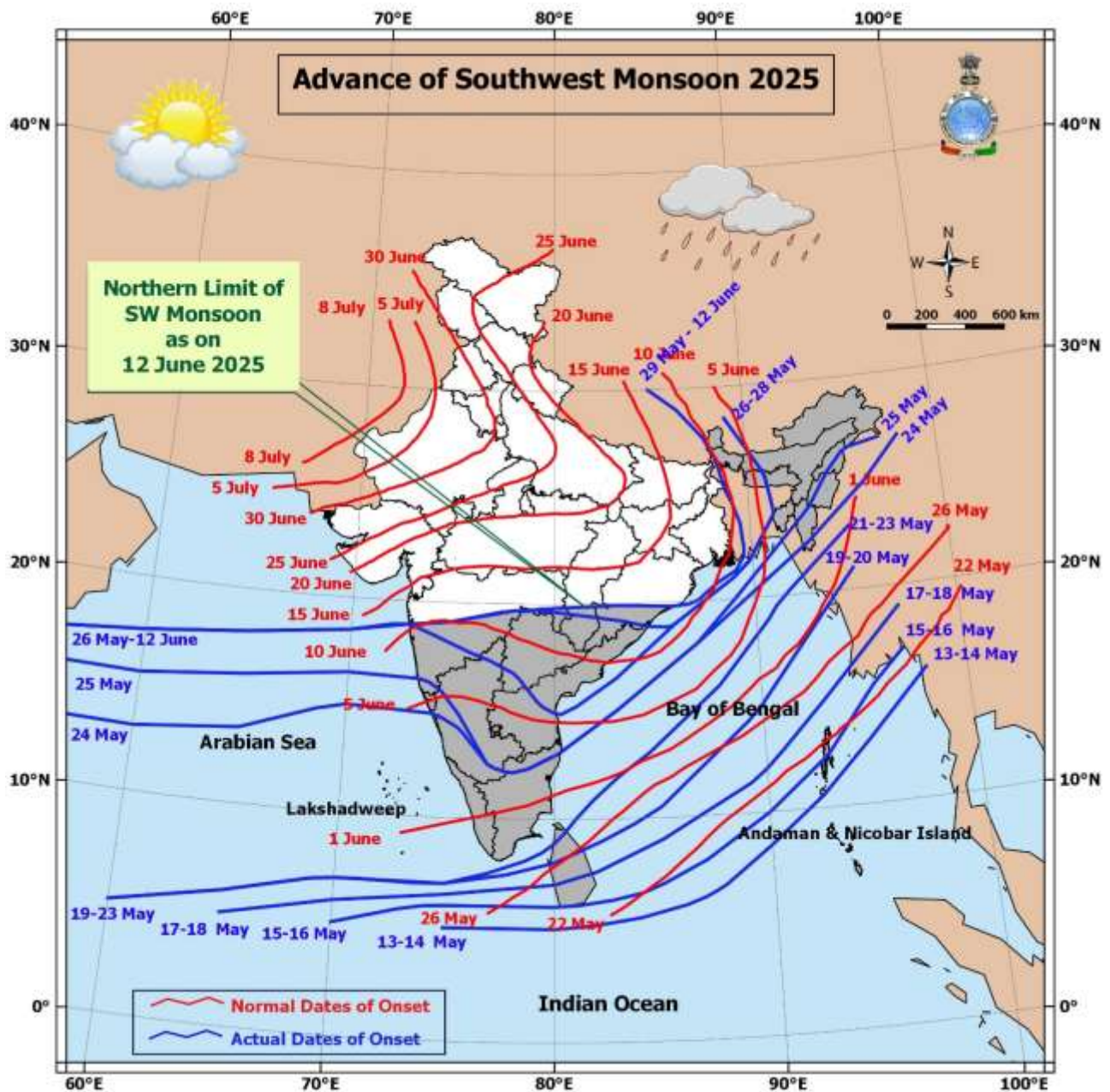
- ❖ Fishermen are advised not to venture along and off the Somalia coast and adjoining sea areas for day 1 to day 5.
- ❖ Fishermen are advised not to venture over Comorin area from day 1 to day 5; Along and off Karnataka, Kerala coasts for day 1 to day 5; south Konkan, Goa coasts for day 1, entire Konkan, Goa coasts for day 2 to day 5; along and off south Gujarat coast adjoining to Konkan coast for day 5 & along and off Gujarat coast for day 5, over Lakshadweep, Maldives areas and south east Arabian Sea for day 1 to day 5; over eastcentral Arabian Sea for day 2 to day 5; over few northern parts of southwest & southern parts of westcentral Arabian Sea for day 2; over some parts of westcentral for day3, day 4, day 5 & many parts of southwest Arabian Sea on day 3 to day 5; some parts of northeast Arabian Sea on day 5.
- ❖ Fishermen are advised not to venture over south Bay of Bengal for day 1 to day 5, adjoining parts of central Bay of Bengal for day 2; over central Bay of Bengal for day 3 to day 5; along and off Tamil Nadu and Andhra Pradesh coasts for day 1, day 3, day 4 and day 5; along and off south Tamil Nadu coast on day 2, along and off Sri Lanka coast for day 1 to day 5.
- ❖ Fishermen are advised not to venture over the Gulf of Mannar from day 1 to day 5.
- ❖ Fishermen are advised not to venture over the entire Andaman Sea from day 1 to day 4 and over north Andaman Sea for day 5.
- ❖ Total suspension of fishing operations is suggested over above mentioned areas and dates.

ii. Weather conditions and forecast over Delhi/NCR during 12th June to 15th June, 2025 (Annexure VI)

For more details, kindly refer National Weather Bulletin:

https://mausam.imd.gov.in/responsive/all_india_forecast_bulletin.php

For District wise warnings refer: <https://mausam.imd.gov.in/responsive/districtWiseWarningGIS.php>



Significant weather reported during past 24 hours till 0830 hours IST of today:**Rainfall recorded (in cm) reported during past 24 hours till 0830 hours IST of today, the 12th June:**

- ❖ **Coastal Karnataka:** Karwar (dist Uttara Kannada) 37; Kota (dist Udupi) 19; Ankola (dist Uttara Kannada), Gokarna (dist Uttara Kannada) 15 Each; Honavar (dist Uttara Kannada) 13; Mangaluru AP (dist Dakshina Kannada), Kundapur (dist Udupi) 11 Each; Kumta (dist Uttara Kannada) 10; Mudubidre (dist Dakshina Kannada), Mulki (dist Dakshina Kannada), Bantwal (dist Dakshina Kannada) 9 Each; Udupi (dist Udupi), Siddapura (dist Udupi), Gersoppa (dist Uttara Kannada) 8 Each; Uppinangadi (dist Dakshina Kannada), Karkala (dist Udupi) 7 Each;
- ❖ **North Interior Karnataka:** Kerur (dist Bagalkote) 16; Hubballi (dist Dharwad) 15; Gabbur (dist Raichur) 11; Lakshmeswar (dist Gadag), Gadag PBO (dist Gadag) 8 Each; Nargund (dist Gadag), Annigere Ars (dist Dharwad), Shiggaon (dist Haveri) 7 Each;
- ❖ **Konkan & Goa:** Canacona (dist South Goa) 13; Sanguem (dist South Goa) 8;
- ❖ **South Interior Karnataka:** Agumbe Emo (dist Shivamogga) 10; N R Pura (dist Chikkamagaluru) 8;
- ❖ **Kerala & Mahe:** Kudulu (dist Kasargod), Muliya AWS (dist Kasargod), Bayar AWS (dist Kasargod) 9 Each; Palluruthy ARG (dist Ernakulam) 8; Kodungallur (dist Thrissur), Kochi IAF (dist Ernakulam), Kalamassery AWS (dist Ernakulam) 7 Each;
- ❖ **Telangana:** Gopalpet (dist Wanaparthy) 9; Kalwakurthy (dist Nagarkurnool), Aiza (dist Jogulamba Gadwal), Bhoothpur (dist Mahabubnagar) 7 Each;
- ❖ **Uttarakhand:** Chamoli (dist Chamoli) 9; Sama (dist Bageshwar), Loharkhet (dist Bageshwar) 7 Each;
- ❖ **Tamil Nadu, Puducherry & Karaikal:** Puducherry (dist Puducherry) 8;
- ❖ **Assam & Meghalaya:** Laharighat ARG (dist Morigaon) 8;
- ❖ **Nagaland, Manipur, Mizoram & Tripura:** Sabroom (dist South Tripura) 7;
- ❖ **Rayalaseema:** Devanakonda (dist Kurnool) 7;
- ❖ **Odisha:** Bhuvan (dist Dhenkanal), Bhograi (dist Balasore), Chilika (dist Khurda) 7 Each.

Realised Gusty Winds (kmph) During Past 24hours ending at 0830 hrs IST of today the 12th June:

- ❖ **Madhya Maharashtra:** Jalgaon 81, Baramati (Pune) 68, Daund (Pune) 56, Kopergaon (Ahilyanagar) 50, Shahada (Nandurbar) 46, Kalwan (Nashik) 39;
- ❖ **Marathwada:** Chhatrapati Sambhaji Nagar - 70, Jalna- 61;
- ❖ **Vidarbha:** Buldhana 63, Washim 39;
- ❖ **Tamil Nadu, Puducherry & Karaikal:** Natham_ISRO 63, Tenkasi 54, Veda sandur 48, Vamban_KVK 39, Thiruchendur 43, Mahabalipuram 41, New Chennai Township Pvt Ltd 48, Tiruvannamalai_ISRO 39, Namakkal_AMFU 39, Coimbatore_AMFU 39, Kadavur_Taluk_Office 39;
- ❖ **Assam & Meghalaya:** Kokraghar 57, Chirang 57, Barpeta 54, Bongaigaon 52, Barpeta 52, Gossaigaon 50, Bajali_University 48, Mushalpur 46, Marigaon 46, Goalpara 44, Shillongani 44, Down_Town_University 44, Kajalgaon 41, Nalbari 39, Garukhuti 37, Salakati 35, Mangaldoi 31, Rowta 31;
- ❖ **Arunachal Pradesh:** Lowertato 54, Anini 50, Kalaktang 35, Seppa 33, Kokraghar 57, Chirang 57, Barpeta 54, Bongaigaon 52, Barpeta52, Garukhuti 37;
- ❖ **West Madhya Pradesh:** Gwalior 53;
- ❖ **Haryana:** Kaithal 52; Chandigarh 35; Hisar 31; Faridabad, Bhiwani & Karnal 30;
- ❖ **Himachal Pradesh:** Kukumseri 48, Seobagh 39, Tabo 37;
- ❖ **Andaman & Nicobar Islands:** Sri Vijayapuram48, Hut_Bay 31;
- ❖ **Gangetic West Bengal:** Durgapur 46 each, Amta 39, Canning 33;
- ❖ **Odisha:** Gunupur46, Mayurbhanj39, Bhubaneswar 37, Cuttack33, Kendrapara, Rourkela 31;
- ❖ **East Madhya Pradesh:** Sagar 46;
- ❖ **Konkan:** Sindhudurg (Devgad) 43;
- ❖ **Jharkhand:** Simdega 41, Bokaro 33;
- ❖ **Punjab:** Mohali 41; Hoshiarpur 39; Fatehgarh 31; Ropar 30;
- ❖ **West Uttar Pradesh:** Agra 37;
- ❖ **Jammu-Kashmir:** Jammu (Chatha) 37 Samba 30;
- ❖ **Bihar:** Patna 31;

Temperature observations during past 24 hours till 0830 hours IST of today:

- ❖ Yesterday, **Maximum temperatures** are in the **range of 43-48°C over** most places of Rajasthan, Punjab; few places over Madhya Pradesh; in isolated places over Haryana-Chandigarh-Delhi, East Uttar Pradesh. They were in the **range of 39-43 °C** over many places of Bihar; few places of Gujarat state; at a few places over Vidarbha, West Uttar Pradesh; at isolated places over Jammu-Kashmir-Ladakh-Gilgit-Baltistan-Muzaffarabad, Jharkhand. They were in the **range of 35-39°C** over many places over Gangetic West Bengal; few places over Assam & Meghalaya, Tamil Nadu, Puducherry & Karaikal, Himachal Pradesh; at isolated places over Odisha, Nagaland, Manipur, Mizoram & Tripura, Coastal Andhra Pradesh & Yanam **and below 35 °C**, elsewhere in the remaining part of the country. Yesterday, The **highest maximum temperature of 48.0°C was reported at SRIGANGANAGAR(RAJASTHAN)**.
- ❖ Yesterday, **Maximum Temperature** were **markedly above normal (> 5.1°C)** at many places over Jammu Kashmir Ladakh-Gilgit-Baltistan-Muzaffarabad; at most places over Arunachal Pradesh; at few places over Assam & Meghalaya and Himachal Pradesh; at isolated places over Sub Himalayan West Bengal & Sikkim, Gangetic West Bengal, Bihar, West Uttar Pradesh, West Rajasthan, East Rajasthan, West Madhya Pradesh and East Madhya Pradesh. **appreciably above normal (3.1°C to 5.0°C)** at many places over East Uttar Pradesh; at most places over Haryana Chandigarh-Delhi and Punjab; at few places over Nagaland, Manipur, Mizoram & Tripura; at isolated places over Odisha and Tamil Nadu, Puducherry & Karaikal. **above normal (1.6°C to 3.0°C)** at few places over Gujarat Region, Saurashtra & Kutch, Konkan & Goa and Coastal Karnataka; at isolated places over Uttarakhand, Madhya Maharashtra and Vidarbha. **near normal (-1.5°C to 1.5°C)** at many places over Andaman & Nicobar Islands, Jharkhand, Chhattisgarh and South Interior Karnataka; at most places over Lakshadweep; at few places over North Interior Karnataka and Kerala & Mahe; at isolated places over Coastal Andhra Pradesh & Yanam and Telangana.

Fig.1: Maximum Temperatures

Fig.2: Departure of Maximum Temperatures

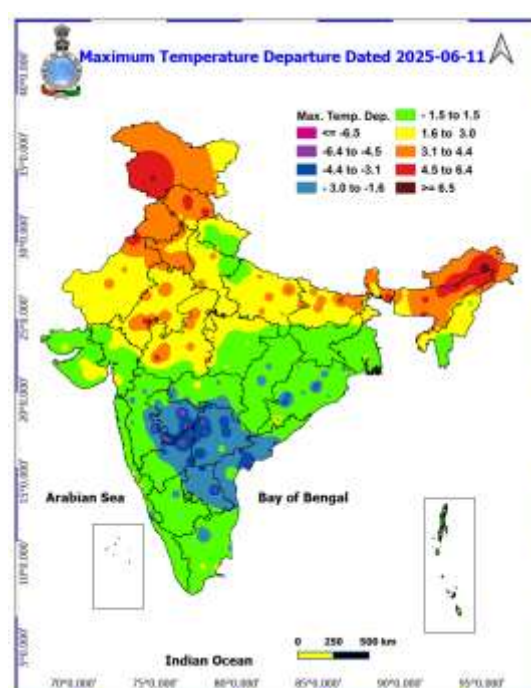
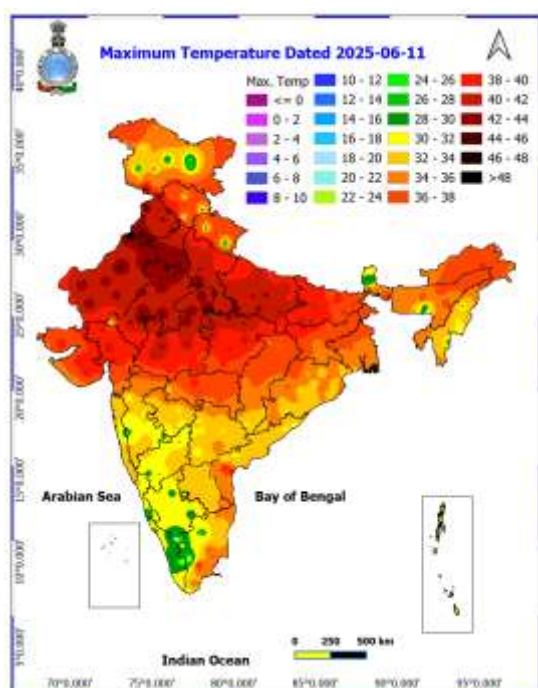
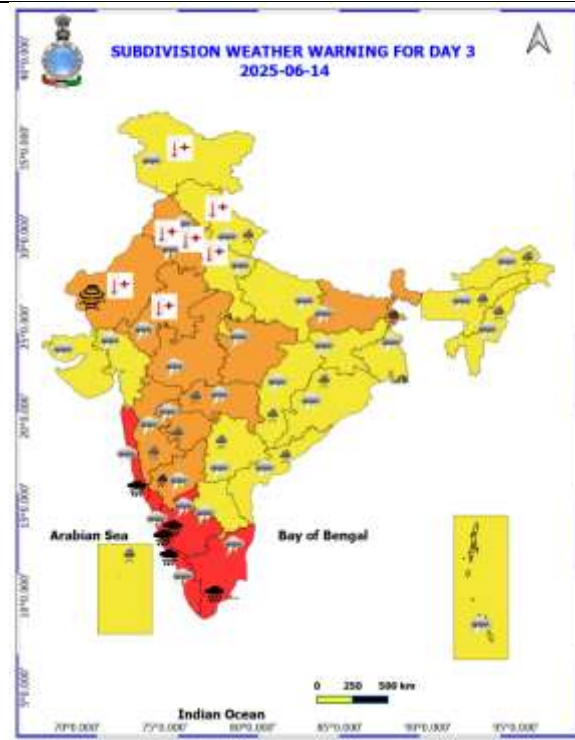
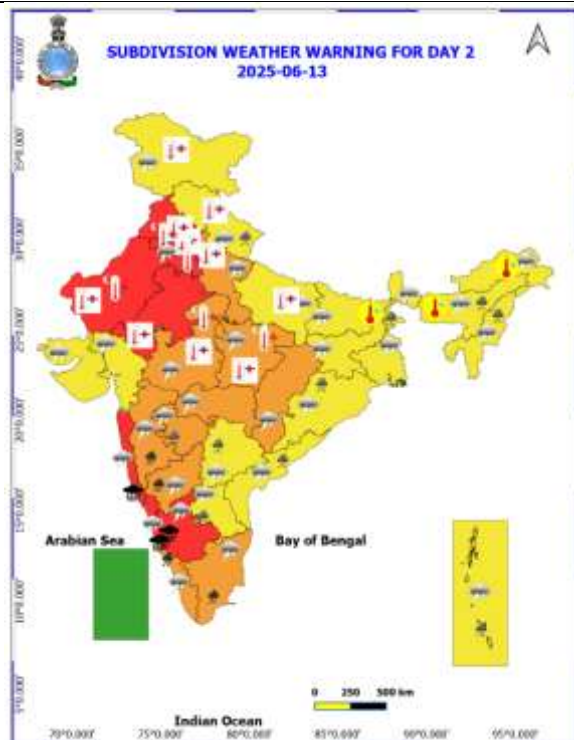
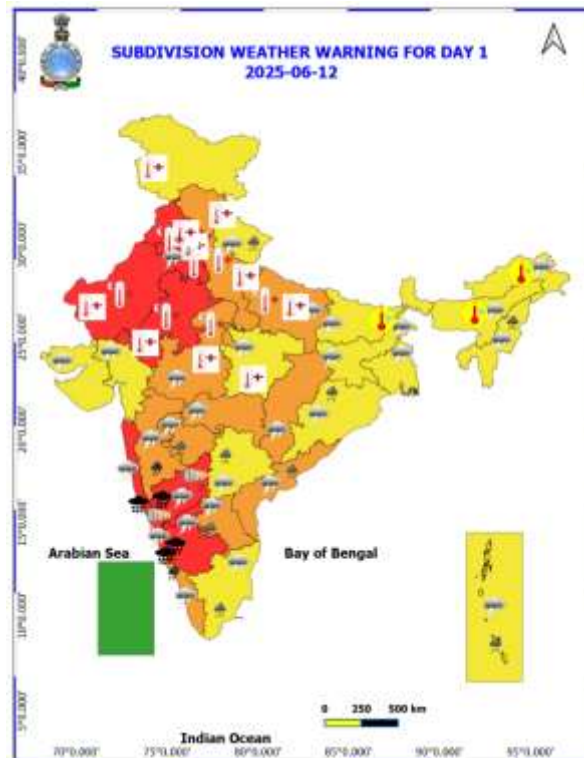
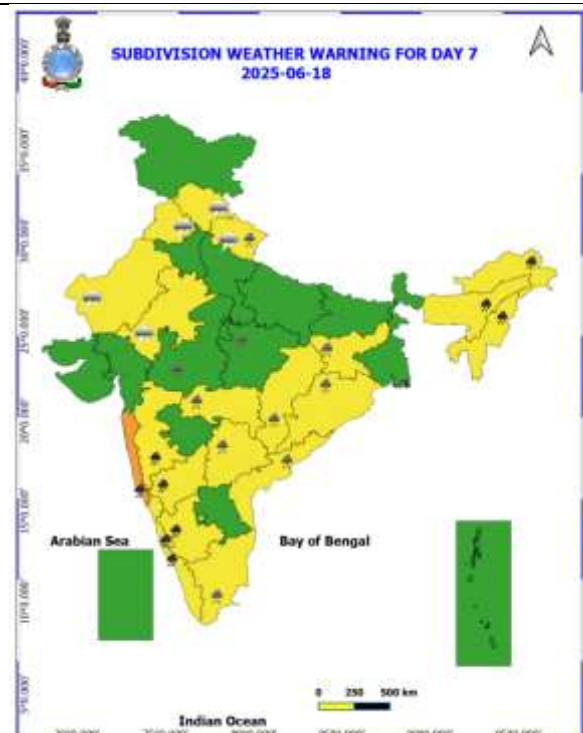
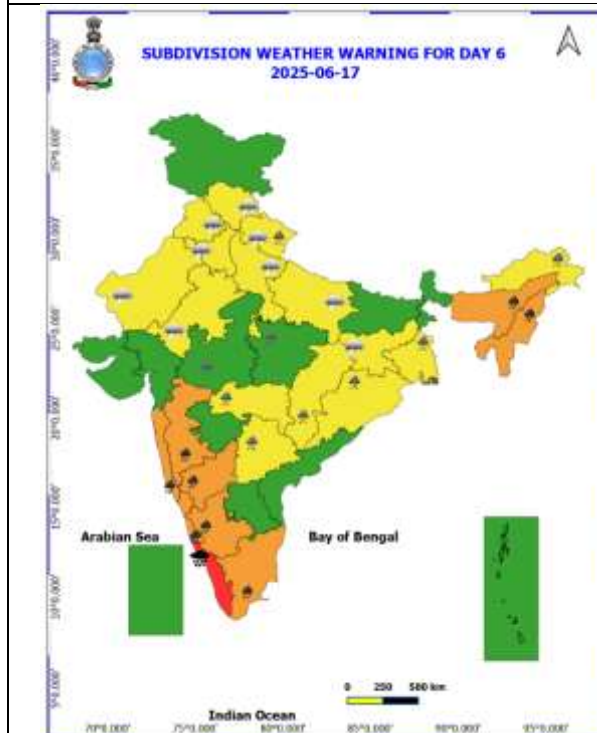
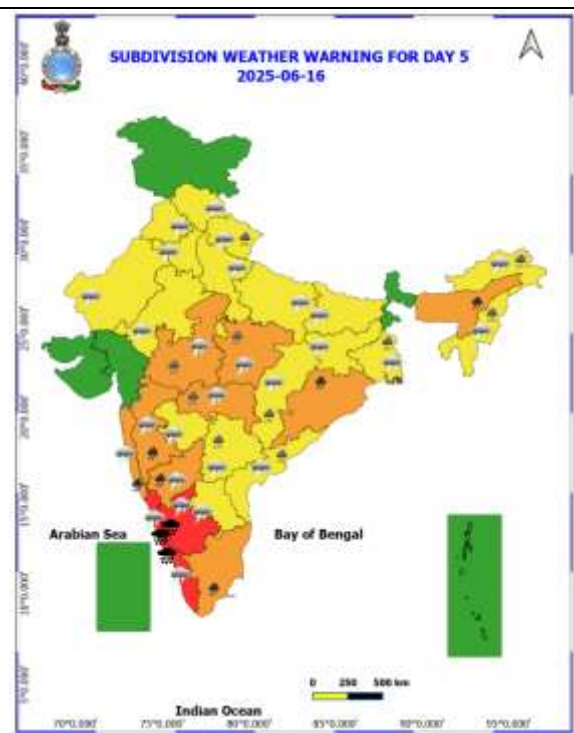
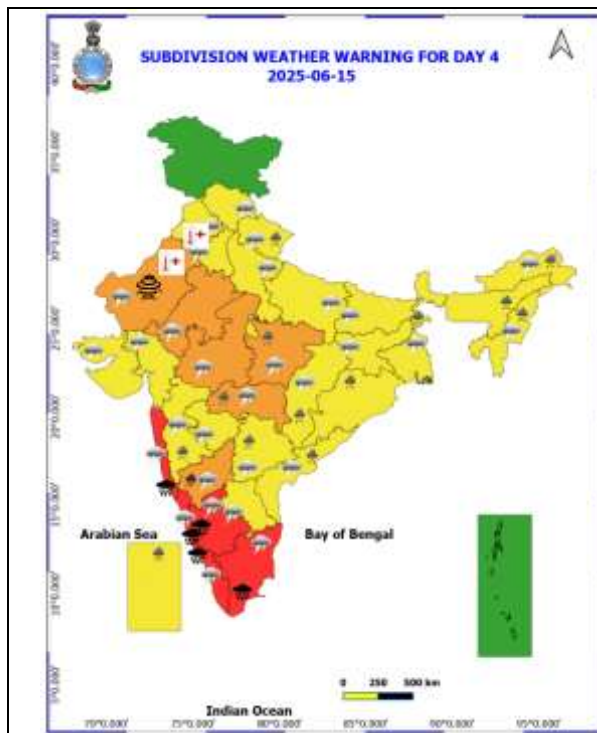


Table-1								
7 Days Rainfall Forecast								
S.No.	Subdivision	12- Jun	13- Jun	14- Jun	15- Jun	16- Jun	17- Jun	18- Jun
		Day 1	Day 2	Day 3	Day 4	Day 5	Day 6	Day 7
1	ANDAMAN & NICOBAR ISLANDS	WS	WS	WS	WS	FWS	FWS	FWS
2	ARUNACHAL PRADESH	ISOL	SCT	FWS	FWS	FWS	WS	WS
3	ASSAM & MEHGHALAYA	SCT	SCT	FWS	FWS	FWS	WS	WS
4	NAGALAND, MANIPUR, MIZORAM AND TRIPURA	SCT	SCT	FWS	FWS	FWS	WS	WS
5	SUB HIMALAYAN WEST BENGAL & SIKKIM	FWS	FWS	WS	WS	WS	FWS	FWS
6	GANGETIC WEST BENGAL	ISOL	SCT	SCT	FWS	WS	FWS	FWS
7	ODISHA	FWS	FWS	FWS	FWS	WS	WS	WS
8	JHARKHAND	ISOL	ISOL	SCT	FWS	FWS	FWS	FWS
9	BIHAR	ISOL	ISOL	ISOL	SCT	SCT	SCT	SCT
10	EAST UTTAR PRADESH	ISOL	ISOL	SCT	SCT	SCT	SCT	ISOL
11	WEST UTTAR PRADESH	ISOL	ISOL	ISOL	ISOL	SCT	SCT	SCT
12	UTTARAKHAND	FWS	FWS	FWS	FWS	FWS	WS	WS
13	HARYANA, CHANDIGARH & DELHI	ISOL	ISOL	ISOL	ISOL	ISOL	SCT	SCT
14	PUNJAB	DRY	DRY	ISOL	ISOL	ISOL	ISOL	ISOL
15	HIMACHAL PRADESH	DRY	DRY	DRY	ISOL	SCT	SCT	SCT
16	JAMMU AND KASHMIR AND LADAKH	DRY	ISOL	ISOL	ISOL	ISOL	ISOL	ISOL
17	WEST RAJASTHAN	DRY	DRY	ISOL	ISOL	ISOL	ISOL	ISOL
18	EAST RAJASTHAN	DRY	ISOL	ISOL	ISOL	ISOL	ISOL	SCT
19	WEST MADHYA PRADESH	ISOL	ISOL	SCT	FWS	FWS	FWS	FWS
20	EAST MADHYA PRADESH	ISOL	ISOL	SCT	FWS	FWS	WS	WS
21	GUJRAT REGION	ISOL	ISOL	ISOL	SCT	SCT	SCT	SCT
22	SAURASHTRA & KUTCH	ISOL	ISOL	ISOL	ISOL	SCT	SCT	SCT
23	KONKAN & GOA	WS	WS	WS	WS	WS	WS	WS
24	MADHYA MAHARASHTRA	WS	WS	WS	FWS	FWS	FWS	FWS
25	MARATHWADA	FWS	FWS	SCT	ISOL	SCT	FWS	SCT
26	VIDARBHA	ISOL	SCT	FWS	FWS	WS	WS	WS
27	CHHATTISGARH	ISOL	ISOL	SCT	FWS	FWS	FWS	FWS
28	COASTAL ANDHRA PRADESH	FWS	SCT	FWS	FWS	FWS	SCT	SCT
29	TELANGANA	FWS	FWS	FWS	FWS	FWS	FWS	FWS
30	RAYALASEEMA	FWS	FWS	SCT	FWS	FWS	SCT	SCT
31	TAMILNADU & PUDUCHERRY	ISOL	ISOL	SCT	SCT	SCT	SCT	ISOL
32	COSTAL KARNATAKA	WS	WS	WS	WS	WS	WS	WS
33	NORTH INTERIOR KARNATAKA	WS	WS	WS	WS	FWS	FWS	FWS
34	SOUTH INTERIOR KARNATAKA	WS	WS	FWS	WS	FWS	FWS	FWS
35	KERALA AND MAHE	WS	WS	WS	WS	WS	WS	WS
36	LAKSHADWEEP	WS	WS	WS	WS	WS	WS	WS

- As the lead period increases forecast accuracy decreases.





- Action may be taken based on ORANGE AND RED COLOUR warnings.
- Vulnerable regions likely urban and hilly areas action may be initiated for heavy rainfall warning.
- As the lead period increases forecast accuracy decreases.

Detailed districtwise Multi Hazard weather warning for next five days available at
<https://mausam.imd.gov.in/responsive/districtWiseWarningGIS.php>

Weather forecast over Delhi/NCR during 12th to 15th June 2025**Past Weather:**

There has been a rise in the minimum temperature up to 1 - 3°C and slight fall in the maximum temperature over Delhi/NCR during the past 24 hours. The maximum and minimum temperatures over Delhi were around 43 to 45°C and 26 to 30° respectively. The minimum temperature was above normal up to 1 - 3°C and the maximum temperature was above normal up to 3 - 4°C. Mainly clear sky conditions with predominant surface wind from the northwest/southeast direction with wind speeds up to 16 kmph prevailed during the past 24 hours. Mainly clear sky conditions with wind speed less than 12 kmph from the southeast direction prevailed over the region in the forenoon today.

Weather Forecast:

12.06.2025: Mainly clear sky becoming partly cloudy sky towards evening/night. Heat wave conditions at isolated places. Very light to light rain/thunderstorm/lightning/Duststorm accompanied with gusty winds 40 -50 kmph temporary reaching 60 kmph during thunderstorm with dust rising winds towards evening/night. The maximum temperatures over Delhi are likely to be in the range of 42 to 44°C. The maximum temperature will be above normal up to 2 - 4°C. The predominant surface wind will likely be from the east direction with a wind speed of less than 20 kmph in the afternoon. The wind speed will gradually increase becoming 20-22 kmph from the southeast direction during evening and night.

13.06.2025: Partly cloudy sky. Hot and humid weather conditions. Very light to light rain/thunderstorm/lightning accompanied with gusty winds 40 -50 kmph temporary reaching 60 kmph during thunderstorm with dust rising winds towards evening/night. The maximum and minimum temperatures over Delhi are likely to be in the range of 41 to 43°C and 28 to 30°C respectively. The minimum temperature will be above normal up to 1 - 2°C and the maximum temperature will be above normal up to 1 - 3°C. The predominant surface wind will likely be from the south direction with a wind speed of less than 15 kmph during the morning hours. The wind speed will gradually decrease becoming 10-14 kmph from the southeast direction in the afternoon. It will increase becoming less than 20 kmph from the southeast direction during evening and night.

14.06.2025: Partly cloudy sky. Very light to light rain/thunderstorm/lightning accompanied with gusty winds 40 -50 kmph temporary reaching 60 kmph during thunderstorm with dust rising winds. The maximum and minimum temperatures over Delhi are likely to be in the range of 40 to 42°C and 28 to 30°C respectively. The minimum temperature will be above normal up to 1 - 2°C and the maximum temperature will be above normal up to 1 - 3°C. The predominant surface wind will likely be from the southeast direction with a wind speed of less than 15 kmph during the morning hours. The wind speed will gradually increase becoming less than 20 kmph from the north direction in the afternoon. It will decrease to less than 15 kmph from the east direction during the evening and night.

15.06.2025: Partly cloudy sky. Very light to light rain/thunderstorm/lightning accompanied with gusty winds 40 -50 kmph temporary reaching 60 kmph during thunderstorm. The maximum and minimum temperatures over Delhi are likely to be in the range of 39 to 41°C and 27 to 29°C respectively. The minimum temperature will be near normal and the maximum temperature will be near normal. The predominant surface wind will likely be from the southeast direction with a wind speed of less than 15 kmph during the morning hours. The wind speed will gradually increase becoming less than 25 kmph from the northeast direction in the afternoon. It will decrease to less than 20 kmph from the northeast direction during the evening and night.

Impact expected and Action Suggested:

- Be cautious and take precautionary measures though there is likelihood of heat wave conditions. There is likelihood of heat related impact to vulnerable population as the temperatures are likely to be above normal.
- Moderate health concern for vulnerable people e.g. infants, elderly people with chronic diseases.
- Avoid heat exposure, wear light weight, light colored, loose, cotton clothes, cover your head, use a cloth, hat or umbrella.

Impact & Action Suggested due to extremely heavy falls/ very heavy rainfall:

- ✓ **Extremely heavy rainfall** likely over North Interior Karnataka on 12th, Tamil Nadu Puducherry & Karaikal on 14th & 15th, Kerala & Mahe during 14th-17th, Coastal & South interior Karnataka during 12th-16th, Konkan & Goa during 12th-15th June.
- ✓ **Very heavy rainfall** over Tamilnadu Puducherry & Karaikal during 13th-17th, Kerala & Mahe, Karnataka during 12th-18th, Konkan & Goa during 16th-18th; ghat areas of Madhya Maharashtra on 12th & 13th and during 16th-18th Jun Sub-Himalayan West Bengal & Sikkim on 14th and over Odisha on 16th June. Arunachal Pradesh on 18th, Assam & Meghalaya during 16th-18th, Nagaland, Manipur, Mizoram & Tripura on 17th & 18th June.

Impact Expected

- Localized Flooding of roads, water logging in low lying areas and closure of underpasses mainly in urban areas of the above region.
- Occasional reduction in visibility due to heavy rainfall.
- Disruption of traffic in major cities due to water logging in roads leading to increased travel time.
- Minor damage to kutch roads.
- Possibilities of damage to vulnerable structure.
- Localized Landslides/Mudslides/landslips/mudslips/landsinks/mudsinks.
- Damage to horticulture and standing crops in some areas due to inundation.
- It may lead to riverine flooding in some river catchments (for riverine flooding please visit Web page of CWC)

Action Suggested

- Check for traffic congestion on your route before leaving for your destination.
- Follow any traffic advisories that are issued in this regard.
- Avoid going to areas that face the water logging problems often.
- Avoid staying in vulnerable structure.

Impact expected and action suggested due to Severe heat wave/ Heat wave condition:

- ❖ **Heat wave condition** very likely at many/some places over Himachal Pradesh & East Rajasthan during 12th-14th with **severe heat wave conditions** at isolated/some parts on 12th June.
- ❖ **Heat wave condition** very likely at many/some places over West Rajasthan during 12th-15th with **severe heat wave conditions** at isolated/some parts during 12th-14th June.
- ❖ **Heat wave conditions** very likely in some/many places over Jammu-Kashmir, West Uttar Pradesh, Punjab, Haryana Chandigarh & Delhi during 12-14th, East Uttar Pradesh, Madhya Pradesh on 12th & 13th June.

Red alert Areas

- Very high likelihood of developing heat illness and heat stroke in all ages.
- Extreme care needed for vulnerable people.

Orange alert Areas:

- High temperature & increased likelihood of heat illness symptoms in people who are either exposed to sun for a prolonged period or doing heavy work.
- High health concern for vulnerable people e.g. infants, elderly, people with chronic diseases.
- Avoid heat exposure– keep cool. Avoid dehydration.
- Drink sufficient water- even if not thirsty.
- Use ORS, homemade drinks like lassi, torani (rice water), lemon water, buttermilk, etc. to keep yourself hydrated.

Yellow alert Areas:

- Moderate temperature & heat is tolerable for general public but moderate health concern likely for vulnerable people e.g. infants, elderly, people with chronic diseases.
- Avoid heat exposure.
- Wear lightweight, light colour, loose, cotton clothes.
- Cover your head, use a cloth, hat or umbrella.

Impact expected and action suggested due to isolated thunderstorm with lightning/gusty & Squally winds over

- ✓ **Thundersquall (wind speed reaching 50-60 kmph gusting to 70 kmph)** at isolated places over Konkan & Goa, Madhya Maharashtra, Marathwada during 12th-14th June. Madhya Pradesh during 14th-16th, Vidarbha during 12th-16th, Chhattisgarh on 12th & 13th, Bihar on 14th June. East Rajasthan on 14th & 15th June.
- ✓ **Strong surface winds** (speed 50-60 kmph) over Kerala & Mahe during 14th-16th, Interior Karnataka, Coastal Andhra Pradesh & Yanam, Rayalaseema during 12th-16th June.

Impact expected:

- Breaking of tree branches, uprooting of large avenue trees. Large dead limbs blown from trees. Damage to Standing crops.
- Minor to Major damage to banana and papaya trees.
- Minor to major damage to power and communication lines due to breaking of branches.
- Strong wind/hail may damage plantation, horticulture and standing crops.
- Partial damage to vulnerable structures due to strong winds.
- Minor damage to kutcha houses/walls and huts.
- Loose objects may fly.

Action suggested:

- People are advised to keep a watch on the weather for worsening conditions and be ready to move to safer places accordingly.
- Stay indoors, close windows & doors and avoid travel if possible.
- Take safe shelters; do not take shelter under trees.
- Do not lie on concrete floors and do not lean against concrete walls.
- Unplug electrical/ electronic appliances.
- Immediately get out of water bodies.
- Keep away from all the objects that conduct electricity.

Agromet advisories for likely impact of Heavy Rainfall / Gusty Winds / Heat Wave

- Postpone nursery sowing of rice in **Coastal Karnataka** and sowing of onion, cotton, pigeon pea and nursery sowing of rice and tomato in **South Interior Karnataka**.
- Drain out excess water and ensure proper drainage in standing crops, vegetables and orchards in **Tamil Nadu, Kerala, Karnataka, Andhra Pradesh, Telangana, Konkan & Goa, Madhya Maharashtra, Marathwada, Uttarakhand, Odisha, Andaman & Nicobar Islands** and NMMT.
- Shift the harvested produce in safer places or cover the produce with tarpaulin sheets in the fields. Tie the harvested crops properly and cover them to minimise the risk of displacement due to strong surface winds.
- Provide mechanical support and propping to horticultural crops and staking to vegetables to avoid lodging.
- In **Jammu & Kashmir, Himachal Pradesh, Punjab, Haryana, Uttar Pradesh, Rajasthan** and **Madhya Pradesh** apply light and frequent irrigation in the evening to protect standing crops, vegetables and orchards from the adverse effects of heat waves and high temperatures. Undertake mulching with crop residue, straw, polythene or soil to conserve soil moisture.

Livestock / Poultry / Fishery

- Keep the animals inside the shed during heavy rainfall and provide them balanced feed.
- Store feed and fodder in a safe place to prevent spoilage.
- Construct an outlet with proper netting around the ponds to drain out excess water, thereby preventing fish from escaping in case of overflow.
- To reduce the effect of heat wave/high temperature, cover the roof of poultry sheds with grass. Also, provide clean, hygienic and plenty of drinking water to animals.

Legends & abbreviations:

- ❖ **Heavy Rain:**64.5-115.5mm; **Very Heavy Rain:**115.6-204.4mm; **Extremely Heavy Rain:** >204.4mm.
- ❖ **Obsy:** Observatory; Automatic Weather Station; **ARG:** Automatic Rain Gauge; **dist:** District; **NH:** National Highway; **KVK:** Krishi Vigyan Kendra; **DVC:** Damodar Valley Corporation; **PTO:** Part Time Office, **Aero:** Aerodrome, **IAF:** Indian Air Force.
- ❖ **Region wise classification of meteorological Sub-Divisions:**
 - **Northwest India:** Western Himalayan Region (Jammu-Kashmir-Ladakh-Gilgit-Baltistan-Muzaffarabad, Himachal Pradesh and Uttarakhand); Punjab, Haryana-Chandigarh-Delhi; West Uttar Pradesh, East Uttar Pradesh, West Rajasthan and East Rajasthan.
 - **Central India:** West Madhya Pradesh, East Madhya Pradesh, Vidarbha and Chhattisgarh.
 - **East India:** Bihar, Jharkhand, Sub-Himalayan West Bengal & Sikkim; Gangetic West Bengal, Odisha and Andaman & Nicobar Islands.
 - **Northeast India:** Arunachal Pradesh, Assam & Meghalaya and Nagaland, Manipur, Mizoram & Tripura.
 - **West India:** Gujarat Region, Saurashtra & Kutch, Konkan & Goa, Madhya Maharashtra and Marathawada.
 - **South India:** Coastal Andhra Pradesh & Yanam, Telangana, Rayalaseema, Coastal Karnataka, North Interior Karnataka, South Interior Karnataka, Kerala & Mahe, Tamil Nadu, Puducherry & Karaikal and Lakshadweep.

LEGENDS

1. अंडमान और निकोबार द्वीपसमूह

2. अरुणाचल प्रदेश

3. असम और मेघालय

4. नागालैंड, मणिपुर, मिजोरम और त्रिपुरा

5. उप-हिमालयी पश्चिम बंगाल और सिक्किम

6. गंगीय पश्चिम बंगाल

7. ओडिशा

8. झारखंड

9. बिहार

10. पूर्वी उत्तर प्रदेश

11. पश्चिम उत्तर प्रदेश

12. उत्तराखंड

13. हरियाणा, चंडीगढ़ और दिल्ली

14. पंजाब

15. हिमाचल प्रदेश

16. जम्मू और कश्मीर और लद्दाख

17. पश्चिम राजस्थान

18. पूर्वी राजस्थान

19. पश्चिम मध्य प्रदेश

20. पूर्वी मध्य प्रदेश

21. गुजरात

22. सौराष्ट्र

23. कोंकण और गोवा

24. मध्य महाराष्ट्र

25. मराठवाड़ा

26. विदर्भ

27. छत्तीसगढ़

28. तटीय आंध्र प्रदेश और यनम

29. तेलंगाना

30. रायलसीमा

31. तमिलनाडु, पुडुचेरी और कराईकल

32. तटीय कर्नाटक

33. आंतरिक उत्तरी कर्नाटक

34. आंतरिक दक्षिणी कर्नाटक

35. केरल और माहे

36. लक्षद्वीप



1. Andaman & Nicobar Islands

2. Arunachal Pradesh

3. Assam & Meghalaya

4. Nagaland, Manipur, Mizoram & Tripura

5. Sub-Himalayan West Bengal & Sikkim

6. Gangetic West Bengal

7. Odisha

8. Jharkhand

9. Bihar

10. East Uttar Pradesh

11. West Uttar Pradesh

12. Uttarakhand

13. Haryana, Chandigarh & Delhi

14. Punjab

15. Himachal Pradesh

16. Jammu & Kashmir and Ladakh

17. West Rajasthan

18. East Rajasthan

19. West Madhya Pradesh

20. East Madhya Pradesh

21. Gujarat

22. Saurashtra

23. Konkan & Goa

24. Madhya Maharashtra

25. Marathwada

26. Vidarbha

27. Chhattisgarh

28. Coastal Andhra Pradesh & Yanam

29. Telangana

30. Rayalaseema

31. Tamilnadu, Puducherry & Karaikal

32. Coastal Karnataka

33. North Interior Karnataka

34. South Interior Karnataka

35. Kerala & Mahe

36. Lakshadweep

SPATIAL DISTRIBUTION (% of Stations reporting)

% Stations	Category	% Stations	Category
76-100	Widespread (WS/Most Places)	26-50	Scattered (SCT/A Few Places)
51-75	Fairly Widespread (FWS/Many Places)	1-25	Isolated (ISOL)



Fog



Heavy Snow



Cold Wave



Heavy Rain



Dust Storm



Cold Day



Very Heavy Rain



Heat Wave



Ground Frost



Extremely Heavy Rain



Warm Night



Thunder & Lightning



Hot Day



Hailstorm



Hot & Humid



Dust Raising Winds



Strong Surface Winds

COLOUR CODED WARNING

No Warning (No Action)

Watch (Be Aware)

Alert (Be Prepared To Take Action)

Warning (Take Action)

Probabilistic Forecast

Terms	Probability of Occurrence (%)
Unlikely	< 25
Likely	25 - 50
Very Likely	50 - 75
Most Likely	> 75

* Red colour warning does not mean "Red Alert", Red colour warning means "Take Action".

Forecast and Warning for any day is valid from 0830 hours IST of day till 0830 hours IST of next day.

For more details, kindly visit <https://mausam.imd.gov.in> or contact: 011-2434-4599

(Service to the Nation since 1875)

DEFINITION/CRITERIA

Rain/ Snow *

Heavy: 64.5 to 115.5 mm/cm *
Very Heavy: 115.6 to 204.4 mm/cm *
Extremely Heavy: > 204.4 mm/cm *

Heat Wave

When maximum temperature of a station reaches $\geq 40^{\circ}\text{C}$ for plains and $\geq 30^{\circ}\text{C}$ for hilly regions
(a) Based on Departure from normal

Heat Wave: Maximum Temperature Departure from normal 4.5°C to 6.4°C .

Severe Heat Wave: Maximum Temperature Departure from normal $\geq 6.5^{\circ}\text{C}$

(b). Based on Actual maximum temperature

Heat Wave: When actual maximum temperature $\geq 45^{\circ}\text{C}$.

Severe Heat Wave: When actual maximum temperature $\geq 47^{\circ}\text{C}$.

(c). Criteria for heat wave for coastal stations

When maximum temperature departure is $> 4.5^{\circ}\text{C}$ from normal. Heat Wave may be described provided maximum temperature $\geq 37^{\circ}\text{C}$.

Warm Night

When maximum temperature remains 40°C

Warm Night: When minimum temperature departure 4.5°C to 6.4°C .

Severe Warm Night: When minimum temperature departure $> 6.4^{\circ}\text{C}$.

Cold Wave

When minimum temperature of a station $\leq 10^{\circ}\text{C}$ for plains and $\leq 0^{\circ}\text{C}$ for hilly regions.
(a). Based on departure

Cold Wave: Minimum Temperature Departure from normal -4.5°C to -6.4°C .

Severe Cold Wave: Minimum Temperature Departure from normal $\leq -6.5^{\circ}\text{C}$

(b) Based on actual Minimum Temperature (for Plains only)

Cold Wave: When Minimum Temperature is $\leq 4.0^{\circ}\text{C}$

Severe Cold Wave: When Minimum Temperature is $\leq 2.0^{\circ}\text{C}$

(c) For Coastal Stations

When Minimum Temperature departure is $\leq -4.5^{\circ}\text{C}$ & actual Minimum Temperature is $\leq 15^{\circ}\text{C}$

Cold Day

When minimum temperature of a station $\leq 10^{\circ}\text{C}$ for plains and $\leq 0^{\circ}\text{C}$ for hilly regions
Based on departure

Cold Day: Maximum Temperature Departure from normal -4.5°C to -6.4°C .

Severe Cold Day: Maximum Temperature Departure from normal $\leq -6.5^{\circ}\text{C}$

Fog

Phenomenon of small droplets suspended in air and the horizontal visibility $< 1\text{km}$

Moderate Fog: When the visibility between 500-200 metres

Dense Fog: when the visibility between 50- 200 metres

Very Dense Fog: when the visibility < 50 metres

Thunderstorm

Sudden electrical discharges manifested by a flash of light (Lightning) and a sharp rumbling sound (thunder)

Dust/Sand Storm

An ensemble of particles of dust or sand energetically lifted to great heights by a strong and turbulent wind.

Frost

Ice deposits on ground

Air temperature $\leq 4^{\circ}\text{C}$ (over Plains)

Squall

A strong wind that rises suddenly, lasts for atleast 1 minute.

Moderate: Wind speed 52-61 kmph

Severe: Wind speed 62-67 kmph

Very Severe: Wind speed > 67 kmph

Sea State

Effect of various waves in the sea over specific area

Rough to very rough: Wind speed 41-62 kmph (22-33 knots) & Wave height 2.5-6 metre

High to very high: Wind speed 63-117 kmph (34-63 knots) & Wave height 6-14 metre

Phenomenal: Wind speed > 117 kmph (> 63 knots) & Wave height > 14 metre

Cyclone

Cyclonic Storm: Wind speed 62-87 kmph (34-47 knots)

Severe Cyclonic Storm: Wind speed 88-117 kmph (48-63 knots)

Very Severe Cyclonic Storm: Wind speed 118-165 kmph (64 - 89 knots)

Extremely Severe Cyclonic Storm: Wind speed 166-220 kmph (90 -119 knots)

Super Cyclone Storm: Wind speed > 220 kmph (> 119 knots)

* Red colour warning does not mean "Red Alert", Red colour warning means "Take Action".

Forecast and Warning for any day is valid from 0830 hours IST of day till 0830 hours IST of next day.

For more details, kindly visit <https://mausam.imd.gov.in> or contact: 011-2434-4599

(Service to the Nation since 1875)

Hot and Humid: When maximum temperatures remain 3°C above normal along with the above normal relative humidity.