



Government of India  
Ministry of Earth Sciences  
India Meteorological Department



Press Release

Date: 18<sup>th</sup> June, 2025

Time of Issue: 1345 hours IST

- Subject:** (i) Southwest Monsoon advanced over some more parts of North Arabian Sea, remaining parts of Gujarat, some parts of Rajasthan, some more parts of Madhya Pradesh, some parts of East Uttar Pradesh, remaining parts of Chhattisgarh and Jharkhand, and some more parts of Bihar.
- (ii) Very heavy to extremely heavy rainfall at isolated places likely over Gujarat, north Konkan, Madhya Maharashtra on 18<sup>th</sup>; Gangetic West Bengal, Jharkhand, Odisha on 18<sup>th</sup> & 19<sup>th</sup> June, 2025.
- (iii) Heavy to very heavy rainfall likely to continue over Northeast India during next 5 days with extremely falls over Meghalaya on 18<sup>th</sup> June.

**Southwest Monsoon: (Annexure I):**

- ❖ Southwest Monsoon has further advanced over some more parts of North Arabian Sea, remaining parts of Gujarat, some parts of Rajasthan, some more parts of Madhya Pradesh, some parts of East Uttar Pradesh, remaining parts of Chhattisgarh and Jharkhand, and some more parts of Bihar.
- ❖ The Northern Limit of Monsoon passes through 25.0°N/60°E, 25.0°N/65°E, 25.5°N/70°E, Barmer, Jodhpur, Jaipur, Gwalior, Khajuraho, Sonbhadra, Gaya, and 30.5°N/82.5°E.
- ❖ Conditions are favourable for further advance of Southwest monsoon over remaining parts of North Arabian Sea, some more parts of Rajasthan, remaining parts of Madhya Pradesh, some more parts of Uttar Pradesh and remaining parts of Bihar, some parts of Uttarakhand, Himachal Pradesh, Jammu-Kashmir-Ladakh-Gilgit-Baltistan-Muzaffarabad during next 2-3 days.

**Realised weather during past 24 hours till 0830 hours IST of today, the 18<sup>th</sup> June, 2025 (Annexure II):**

- ❖ **Heavy to very heavy rainfall** has been recorded at isolated places over Assam & Meghalaya, Manipur, Gangetic West Bengal, Odisha, Jharkhand, West Madhya Pradesh, Saurashtra & Kutch, Madhya Maharashtra, Coastal Karnataka and Kerala & Mahe **Heavy rainfall** at a few places over Jharkhand and at isolated places over Uttar Pradesh, Haryana-Chandigarh, Punjab, Uttarakhand, Rajasthan, , East Madhya Pradesh, Gujarat Region, Konkan & Goa , Tamil Nadu and Interior Karnataka.
- ❖ **Thunderstorm accompanied with Squally/Gusty winds with speed 70-110 kmph** at isolated places over Coastal Andhra Pradesh; **with speed 50-70 kmph** at isolated places over Gangetic West Bengal, West Madhya Pradesh, Konkan, Madhya Maharashtra, Marathwada, Assam & Meghalaya, Tamil Nadu, Kerala, Karnataka,

For more details of realised weather, kindly refer **Annexure II**,

Detailed observations of Maximum Temperature during past 24 hours till 0830 hours IST of today are appended in **Annexure III**.

**i. Weather Systems, Forecast and Warnings (refer to Annexure IV & V):**

- ❖ A **well marked low pressure area lay** over Gangetic West Bengal & neighbourhood at 0830 hrs IST of today, the 18<sup>th</sup> June 2025. It is likely to move slowly northwestwards across Jharkhand during next 24 hours.
- ❖ A **low pressure area** lay over central Rajasthan & neighbourhood at 0830 hrs IST of today, the 18<sup>th</sup> June 2025.
- ❖ A **trough** runs from Punjab to north Gujarat Region across the above cyclonic circulation over central Rajasthan in lower & middle tropospheric levels.
- ❖ The **Western Disturbance** as a trough in middle tropospheric westerlies roughly along Long. 72°E to the north of Lat. 30°N.

- ❖ Under the influence of these systems, the following weather is likely:

#### East & Central India:

- ✓ Light/moderate rainfall at most/many places accompanied with **thunderstorm, lightning & gusty winds speed reaching 40-50 kmph** likely over Andaman & Nicobar Islands on 18<sup>th</sup> & 19<sup>th</sup>; Madhya Pradesh, Vidarbha, Chhattisgarh, Gangetic West Bengal, Bihar, Jharkhand, Odisha during 18<sup>th</sup>-22<sup>nd</sup> with **Thundersquall (wind speed reaching 50-60 kmph gusting to 70 kmph)** very likely at isolated places over Madhya Pradesh on 18<sup>th</sup> & 19<sup>th</sup> June.
- ✓ Isolated **heavy rainfall** also likely over Sub-Himalayan West Bengal & Sikkim during 18<sup>th</sup>, 19<sup>th</sup>, 22<sup>nd</sup> & 23<sup>rd</sup>, Gangetic West Bengal on 23<sup>rd</sup> & 24<sup>th</sup>, Bihar, Jharkhand, Odisha during 18<sup>th</sup>-22<sup>nd</sup>, Madhya Pradesh during 18<sup>th</sup>-23<sup>rd</sup> June with **very heavy rainfall** over Bihar on 18<sup>th</sup> & 19<sup>th</sup>, Gangetic West Bengal, Odisha on 19<sup>th</sup>, Jharkhand on 20<sup>th</sup>, emp during 20<sup>th</sup>-23<sup>rd</sup>, West Madhya Pradesh on 22<sup>nd</sup> & 23<sup>rd</sup> and over Chhattisgarh during 18<sup>th</sup>-20<sup>th</sup> June.
- ✓ **Extremely heavy rainfall (>20 cm/24 hours) likely at isolated places over Gangetic West Bengal, Odisha 18<sup>th</sup>; Jharkhand on 18<sup>th</sup> & 19<sup>th</sup> June.**

#### West India:

- ✓ Light/moderate rainfall at most/many places likely over Gujarat State, Konkan & Goa, Madhya Maharashtra, Marathawada during 18<sup>th</sup> -24<sup>th</sup> June.
- ✓ Isolated **heavy rainfall** likely over Konkan & Goa, Madhya Maharashtra, Gujarat Region during 18<sup>th</sup>-24<sup>th</sup>; Saurashtra & Kutch during 18<sup>th</sup>-19<sup>th</sup> and 22<sup>nd</sup>- 24<sup>th</sup> with **very heavy rainfall** on Konkan & Goa, Madhya Maharashtra on 18<sup>th</sup> & 19<sup>th</sup>, Gujarat State on 18<sup>th</sup> June.

#### South Peninsular India:

- ✓ Light/moderate rainfall at many/some places accompanied with isolated **thunderstorm, lightning** over Tamil Nadu, Puducherry & Karaikal, Kerala & Mahe, Lakshadweep, Karnataka during 18<sup>th</sup>-19<sup>th</sup>; Coastal Andhra Pradesh & Yanam, Rayalaseema, Telangana during 18<sup>th</sup>-20<sup>th</sup> June.
- ✓ Isolated **heavy rainfall** likely over Tamil Nadu on 18<sup>th</sup>, Kerala & Mahe on 18<sup>th</sup>, 19<sup>th</sup> & 22<sup>nd</sup>, Coastal Karnataka on 18<sup>th</sup>, 23<sup>rd</sup> & 24<sup>th</sup> June.
- ✓ **Strong surface winds** (speed reaching 40-60 kmph) very likely over Kerala & Mahe, Lakshadweep, Karnataka on 18<sup>th</sup> & 19<sup>th</sup>, Coastal Andhra Pradesh & Yanam, Rayalaseema during 18<sup>th</sup> -21<sup>st</sup> June.

#### Northeast India:

- ✓ Light/moderate rainfall at many/most places accompanied with **thunderstorm, lightning and isolated heavy to very heavy rainfall** likely to continue over Northeast India during next 7 days with **extremely heavy rainfall** over Meghalaya on 18<sup>th</sup> June.

#### Northwest India:

- ✓ Light/moderate rainfall at some/many places accompanied with **thunderstorm, lightning & gusty winds speed reaching 40-50 kmph** likely over Northwest India during 18<sup>th</sup>-24<sup>th</sup> June.
- ✓ Isolated **heavy rainfall** likely over Uttarakhand, Uttar Pradesh, East Rajasthan during 18<sup>th</sup>-24<sup>th</sup>; Jammu-Kashmir-Ladakh-Gilgit-Baltistan-Muzaffarabad on 22<sup>nd</sup>; Himachal Pradesh, Punjab, Haryana, Chandigarh during 20<sup>th</sup>-23<sup>rd</sup> West Rajasthan on 18<sup>th</sup> with **very heavy rainfall** on East Rajasthan on 18<sup>th</sup>, 19<sup>th</sup>, 22<sup>nd</sup> & 23<sup>rd</sup>, Uttar Pradesh during 19<sup>th</sup>-22<sup>nd</sup>, Uttarakhand during 21<sup>st</sup>-23<sup>rd</sup>, Himachal Pradesh on 22<sup>nd</sup> & 23<sup>rd</sup> June.

#### Maximum Temperature Forecast:

- ❖ Fall by 2-3°C in maximum temperatures likely over Central India during next 2 days and no large change thereafter.
- ❖ No significant change in maximum temperatures likely over rest parts of the country.

#### Hot & Humid Conditions warnings:

- ❖ **Hot & Humid conditions** very likely in isolated pockets of Tamil Nadu on 18<sup>th</sup> & 19<sup>th</sup>, Coastal Andhra Pradesh & Yanam, Rayalaseema during 18<sup>th</sup>-22<sup>nd</sup> June.

#### Fishermen Warnings:

- ❖ Fishermen are advised to avoid venturing into the following from 18<sup>th</sup> to 23<sup>rd</sup> June 2025:  
**Arabian Sea:**
- ❖ Fishermen are advised not to venture over Comorin area, Lakshadweep, Maldives areas from day 1 (18<sup>th</sup> June 2025); Along and off Gujarat coast for day 1 to 4 (18<sup>th</sup>-22<sup>nd</sup> June); Konkan coast for day 1 to day 3 (18<sup>th</sup>-21<sup>st</sup>

June 2025), Goa coast- Karnataka coast for day 1 to day 2 (18th - 20th June), Kerala coast for day 1 (18th June 2025); over south east Arabian Sea for day 1 (18th June 2025); over eastcentral & northeast Arabian Sea for day 1 to day 4 (18th to 22<sup>nd</sup> June 2025); over most parts of westcentral Arabian Sea for day 1 to day 5 (18th-23rd June 2025), southern parts of northwest Arabian Sea for day 2 to day 4 (19th -22nd June 2025)

- ❖ Fishermen are advised not to venture along and off the Somalia coast and adjoining sea areas, Oman and adjoining Yemen coast & adjoining sea areas for day 1 to day 5 (18th-23rd June);

**Bay of Bengal:**

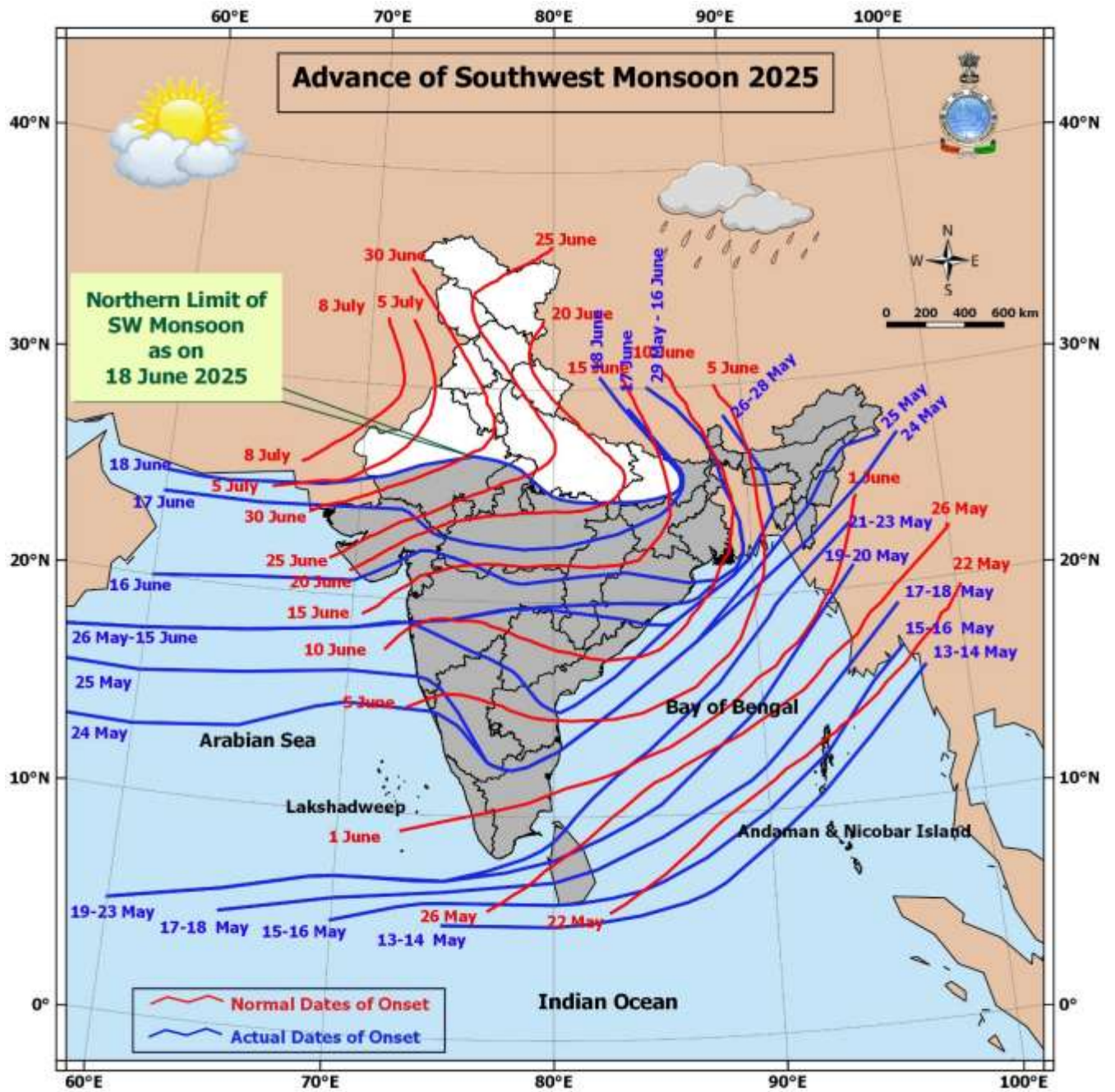
- ❖ Fishermen are advised not to venture over most parts of central Bay of Bengal for day 1, day 2 & day 5 (18th, 19th & 22nd June 2025) & many parts of central Bay of Bengal for day 3 and day 4 (20th, 21<sup>st</sup> June 2025); over north Bay of Bengal, along and off Odisha and West Bengal coasts for day 1 and day 2 (18th - 20th June 2025).
- ❖ Along and off Sri Lanka coast for day 5 (22nd June 2025); along and off Andhra Pradesh coast for day 1 to day 4 (18th - 22nd June 2025).
- ❖ Fishermen are advised not to venture over the Gulf of Mannar and Andaman Sea from day 1 (18th June 2025).
- ❖ Total suspension of fishing operations is suggested over above mentioned areas and dates.

**ii. Weather conditions and forecast over Delhi/NCR during 18<sup>th</sup> June to 21<sup>st</sup> June, 2025 (Annexure VI)**

**For more details, kindly refer National Weather Bulletin:**

[https://mausam.imd.gov.in/responsive/all\\_india\\_forecast\\_bulletin.php](https://mausam.imd.gov.in/responsive/all_india_forecast_bulletin.php)

**For District wise warnings refer:** <https://mausam.imd.gov.in/responsive/districtWiseWarningGIS.php>





**Significant weather reported during past 24 hours till 0830 hours IST of today:****Rainfall recorded (in cm) reported during past 24 hours till 0830 hours IST of today, the 18<sup>th</sup> June:**

- ❖ **West Madhya Pradesh:** Narwar (dist Shivpuri) 16;
- ❖ **Saurashtra & Kutch:** Sayla (dist Surendranagar) 16; Barvala (dist Botad) 15; Botad (dist Botad) 14; Jodia (dist Jamnagar), Muli (dist Surendranagar) 13 Each; Umralla (dist Bhavnagar) 12; Kandla Airport (dist Kutch), Kandla New (dist Kutch), Thangadh (dist Surendranagar), Vallabhipur (dist Bhavnagar) 11 Each; Chuda (dist Surendranagar) 10; Gandhidham (dist Kutch) 9; Anjar (dist Kutch) 8; Malia Miana (dist Morbi), Halvad (dist Morbi), Okha (dist Devbhoomi Dwarka), Nakhatrana (dist Kutch) 7 Each;
- ❖ **Jharkhand:** Arki (dist Khunti) 15; Kuru (dist Lohardaga), Bandgaon (dist West Singhbhum) 14 Each; Ranchi AP (dist Ranchi) 13; Mandar (dist Ranchi), Gobindpur Dvc (dist Dhanbad) 12 Each; Maithon (dist Dhanbad), Burmu (dist Ranchi), Khalari (dist Ranchi), Maithon Dvc (dist Dhanbad) 11 Each; Chandwa (dist Latehar), Murhu (dist Khunti), Herhanj (dist Latehar) 10 Each; Panki (dist Palamu), Putki (dist Dhanbad), Latehar (dist Latehar), Tenughat (dist Bokaro), Jamtara Fmo (dist Jamtara), Shilaichak (dist Chatra), Icar Namkum (dist Ranchi), Bau Kanke (dist Ranchi) 9 Each; Chandil (dist Seraikela-kharsawan), Putki Dvc (dist Dhanbad), Boram (dist East Singhbhum), Gurabandha (dist East Singhbhum), Bariyatu (dist Latehar) 8 Each; Nimdih (dist Seraikela-kharsawan), Jamtara (dist Jamtara), Kolebira (dist Simdega), Nandadih (dist Giridih), Dhanbad (dist Dhanbad), Jamshedpur (dist East Singhbhum), Hendigir (dist Hazaribag), Bano Simdega Kvk AWS (dist Simdega), Nala (dist Jamtara), Fatehpur (dist Jamtara), Sisai (dist Gumla), Panchet (dist Dhanbad) 7 Each;
- ❖ **Assam & Meghalaya:** N.lakhimpur/Lilabari (dist Lakhimpur) 14; Chauldhowaghat (dist Lakhimpur) 12; Cherrapunji(rkm) (dist East Khasi Hills) 9; Mawsynram (dist East Khasi Hills) 8; Bihubar (dist Sibsagar), Neamatighat (dist Jorhat) 7 Each;
- ❖ **Odisha:** Joda (dist Keonjhar) 13; Tiring (dist Mayurbhanj) 12; Banspal (dist Keonjhar) 10; Tensa (dist Sundargarh) 9; Banaigarh (dist Sundargarh) 8; Telkoi (dist Keonjhar), Naktideul (dist Sambalpur) 7 Each;
- ❖ **Kerala & Mahe:** Taliparamba (dist Cannur) 12; Chemberi AWS (dist Cannur) 8; Tellichery (dist Cannur) 7;
- ❖ **Coastal Karnataka:** Uppinangadi (dist Dakshina Kannada) 12; Mudubidre (dist Dakshina Kannada), Castle Rock (dist Uttara Kannada) 10 Each; Belthangadi (dist Dakshina Kannada) 8; Dharmasthala (dist Dakshina Kannada) 7;
- ❖ **Gangetic West Bengal:** Asansol(CWC) (dist Paschim Bardhaman) 12; Asansol (dist Paschim Bardhaman) 11; Simula (dist Purulia), Burnpur (dist Paschim Bardhaman) 9 Each; Bankura(CWC) (dist Bankura), Amtala (dist Murshidabad) 8 Each; Bankura (dist Bankura), Burdwan PTO (dist Purba Bardhaman), Manteswar (dist Purba Bardhaman) 7 Each;
- ❖ **East Madhya Pradesh:** Dindori-aws (dist Dindori) 11; Gaurihar (dist Chhatarpur) 9; Badamalhera (dist Chhatarpur) 7;
- ❖ **South Interior Karnataka:** Kottigehara (dist Chikkamagaluru) 10; Bhagamandala (dist Kodagu) 9; Kalasa (dist Chikkamagaluru) 7;
- ❖ **East Rajasthan:** Kaman (dist Bharatpur) 10; Sikrai (dist Dausa) 8; Todabhim (dist Karauli), Girva SR (dist Udaipur) 7 Each;
- ❖ **Haryana-Chandigarh:** Bawal (dist Rewari) 10; Nuh (dist Nuh) 9; Bawal AWS (dist Rewari) 8; Manethi REV (dist Rewari) 7;
- ❖ **East Uttar Pradesh:** Bahraich (dist Bahraich) 9;
- ❖ **West Uttar Pradesh:** Jhansi (dist Jhansi) 9; Baheri (dist Bareilly), Aliganj (dist Etah) 7 Each;
- ❖ **North Interior Karnataka:** Londa (dist Belagavi) 8;
- ❖ **Tamil Nadu, Puducherry & Karaikal:** Avalanche (dist Nilgiris) 8; Chinnakalar (dist Coimbatore) 7;
- ❖ **Madhya Maharashtra:** Radhanagari (dist Kolhapur), Shahuwadi (dist Kolhapur) 8 Each; Mahabaleshwar (dist Satara) 7;
- ❖ **Gujarat Region:** Deodar (dist Banaskantha), Borsad (dist Anand) 8 Each;
- ❖ **West Rajasthan:** Raniwada SR (dist Jalore) 8;
- ❖ **Punjab:** Nabha (dist Patiala) 8;
- ❖ **Konkan & Goa:** Mandangad (dist Ratnagiri) 7.

**Realised Gusty Winds (kmph) During Past 24hours ending at 0830 hrs IST of today the 18<sup>th</sup> June:**

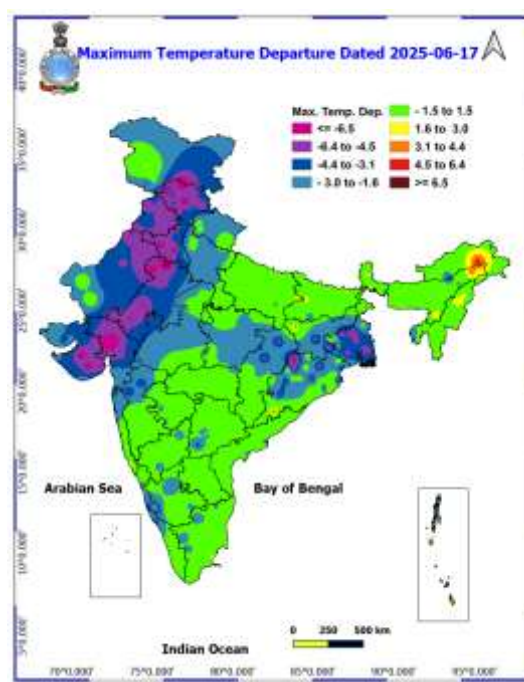
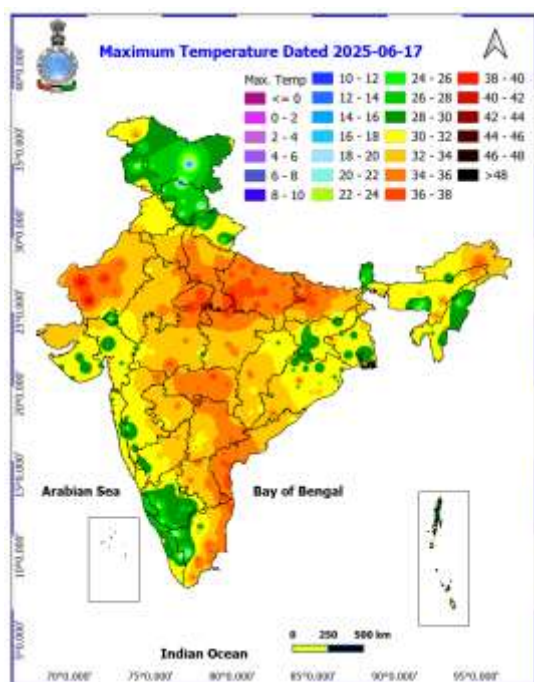
- ❖ **Gangetic West Bengal:** Sagar Island (56); Digha (37); Gangasagar (35); Canning (30);
- ❖ **West Madhya Pradesh:** 59 KMPH UJJAIN 15 PLACES;
- ❖ **Konkan:** Alibag(RAIGAD)- 68 Kmph, Palghar-50 Kmph, Santacruz(MUMBAI)- 48 Kmph,
- ❖ **Madhya Maharashtra:** Vilholi(NASHIK)- 57 Kmph, Mahabaleshwar(SATARA)- 54 Kmph, Jalgaon- 50 Kmph,
- ❖ **Marathwada:** Parbhani- 50 Kmph, JALNA- 48 Kmph
- ❖ **Assam & Meghalaya:** Mawsynram = 57 Kmph, Mawkyrwat = 56 Kmph, Tura KVK, Nongstoin, Jowai 43 each.

### Temperature observations during past 24 hours till 0830 hours IST of today:

- ❖ Yesterday, **Maximum temperatures** were in the **range of 38-42 °C** over few places over West Rajasthan, Bihar; at isolated places over Uttar Pradesh; in the **range of 33-38°C** over a most places over Vidarbha, Telangana, Rayalaseema; many places over East Madhya Pradesh, Chhattisgarh, Coastal Andhra Pradesh & Yanam, Tamil Nadu, Puducherry & Karaikal; few places over Haryana-Chandigarh-Delhi, East Rajasthan, Uttarakhand, West Madhya Pradesh; at isolated places over Jammu-Kashmir-Ladakh-Gilgit-Baltistan-Muzaffarabad, Punjab, Saurashtra & Kutch, Madhya Maharashtra, Odisha, West Bengal & Sikkim, Assam & Meghalaya, Jharkhand and below 33 °C elsewhere in the remaining part of the country. Yesterday, The **highest maximum temperature of 42.8°C** was reported at **Orai (Uttar Pradesh)**.
- ❖ **Maximum Temperatures were markedly above normal (> 5.1°C)** at few places over Arunachal Pradesh; at isolated places over Jammu-Kashmir-Ladakh-Gilgit Baltistan-Muzaffarabad. **appreciably above normal (3.1°C to 5.0°C)** at isolated places over Assam & Meghalaya, West Uttar Pradesh and Tamil Nadu, Puducherry & Karaikal. **above normal (1.6°C to 3.0°C)** at few places over Bihar; at isolated places over Nagaland, Manipur, Mizoram & Tripura, Sub Himalayan West Bengal & Sikkim, West Madhya Pradesh, Konkan & Goa, Vidarbha and Chhattisgarh. **near normal (-1.5°C to 1.5°C)** at many places over Madhya Maharashtra, Marathwada and Coastal Andhra Pradesh & Yanam; at most places over East Uttar Pradesh, Uttarakhand, Telangana, Rayalaseema and Lakshadweep; at few places over Andaman & Nicobar Islands, West Rajasthan, East Madhya Pradesh, Coastal Karnataka and Kerala & Mahe; at isolated places over Gangetic West Bengal, Odisha and North Interior Karnataka.

**Fig.1: Maximum Temperatures**

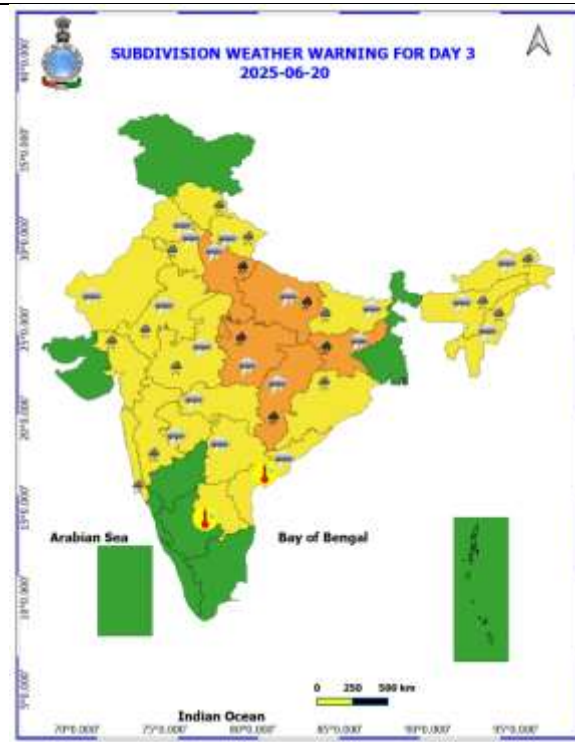
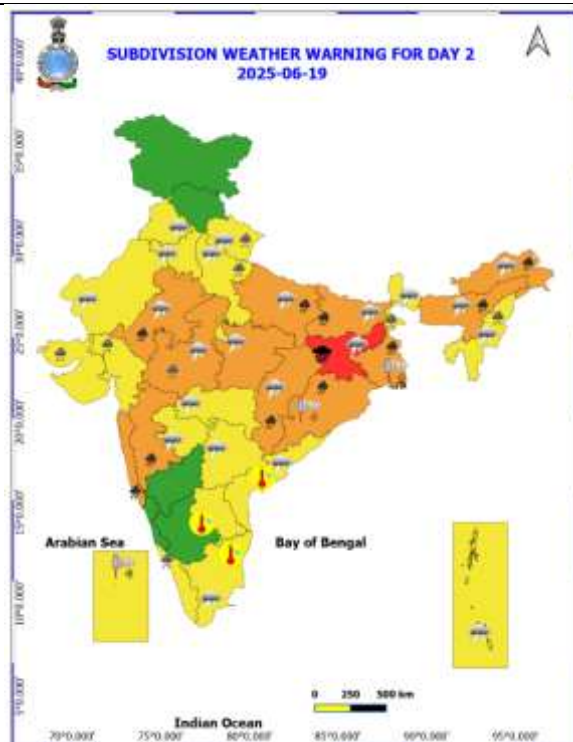
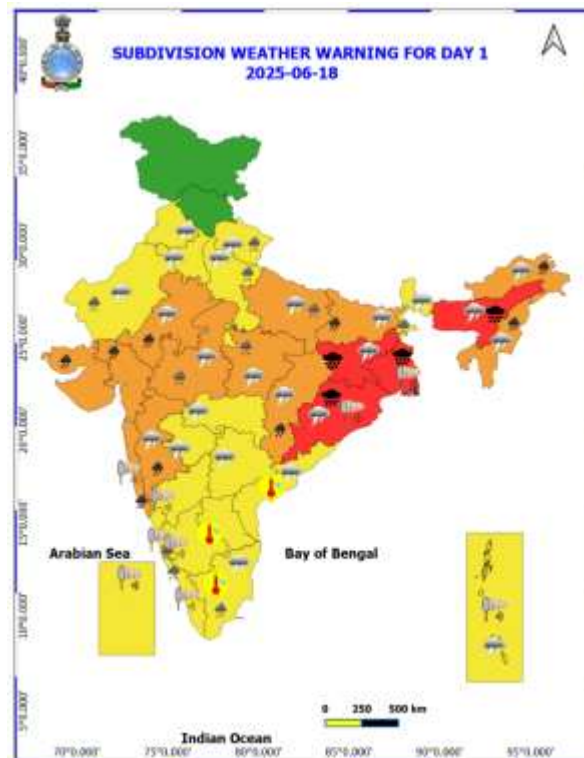
**Fig.2: Departure of Maximum Temperatures**



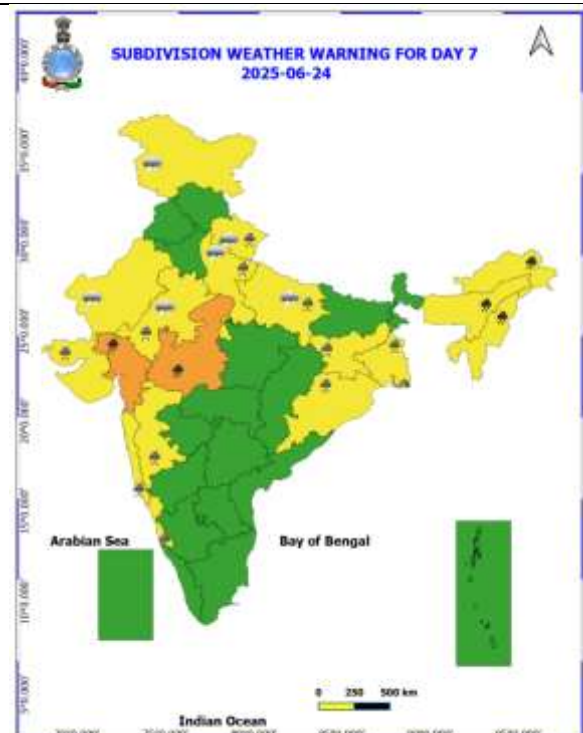
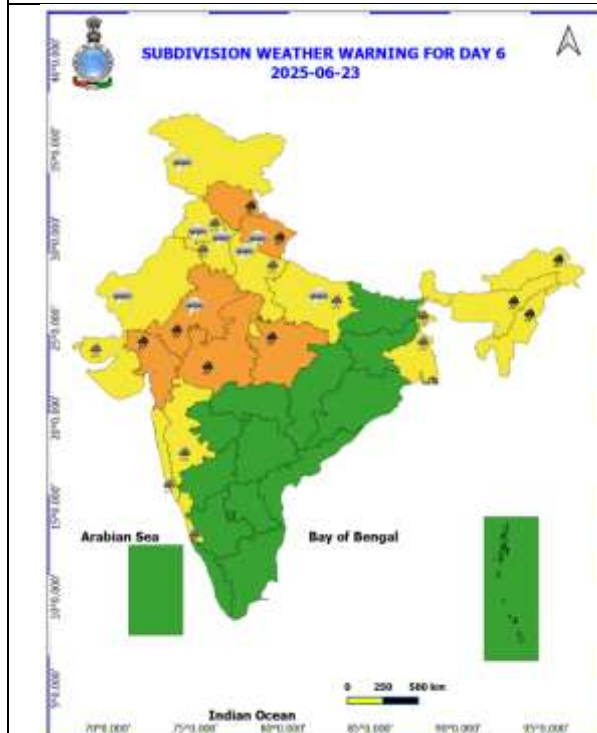
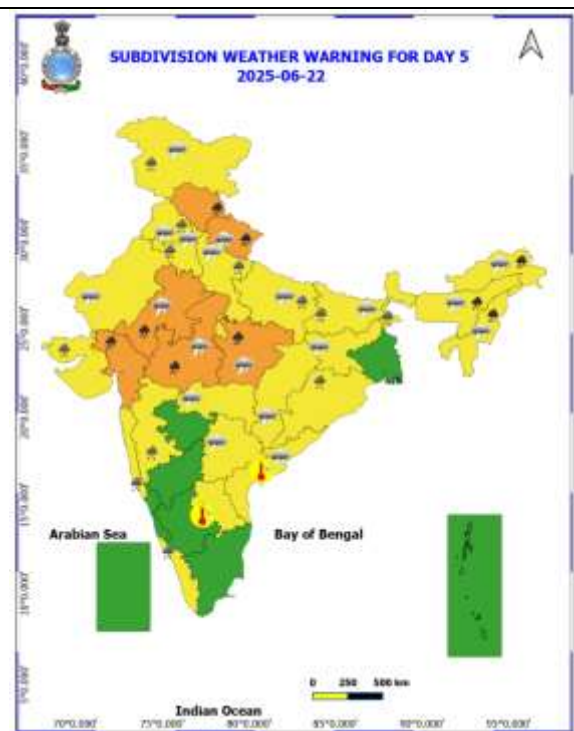
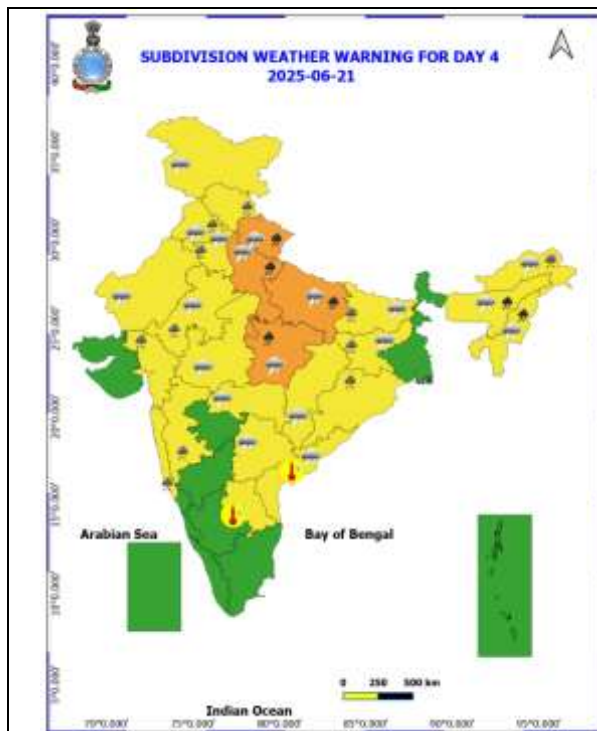
| Table-1                  |  |         |         |         |         |         |         |         |
|--------------------------|--|---------|---------|---------|---------|---------|---------|---------|
| 7 Days Rainfall Forecast |  |         |         |         |         |         |         |         |
| S.No.                    | Subdivision                            | 18- Jun | 19- Jun | 20- Jun | 21- Jun | 22- Jun | 23- Jun | 24- Jun |
|                          |  | Day 1   | Day 2   | Day 3   | Day 4   | Day 5   | Day 6   | Day 7   |
| 1                        | ANDAMAN & NICOBAR ISLANDS              | WS      | WS      | WS      | FWS     | FWS     | FWS     | FWS     |
| 2                        | ARUNACHAL PRADESH                      | WS      | WS      | WS      | FWS     | FWS     | FWS     | FWS     |
| 3                        | ASSAM & MEHGHALAYA                     | FWS     | FWS     | FWS     | WS      | WS      | WS      | WS      |
| 4                        | NAGALAND, MANIPUR, MIZORAM AND TRIPURA | WS      | WS      | WS      | WS      | WS      | WS      | WS      |
| 5                        | SUB HIMALAYAN WEST BENGAL & SIKKIM     | WS      | WS      | WS      | WS      | WS      | WS      | WS      |
| 6                        | GANGETIC WEST BENGAL                   | WS      | WS      | FWS     | FWS     | FWS     | FWS     | WS      |
| 7                        | ODISHA                                 | WS      | WS      | FWS     | FWS     | FWS     | SCT     | FWS     |
| 8                        | JHARKHAND                              | WS      | WS      | WS      | WS      | FWS     | FWS     | WS      |
| 9                        | BIHAR                                  | FWS     | FWS     | FWS     | FWS     | SCT     | SCT     | SCT     |
| 10                       | EAST UTTAR PRADESH                     | FWS     | WS      | WS      | WS      | WS      | FWS     | FWS     |
| 11                       | WEST UTTAR PRADESH                     | SCT     | FWS     | WS      | WS      | WS      | FWS     | FWS     |
| 12                       | UTTARAKHAND                            | FWS     | FWS     | FWS     | FWS     | WS      | FWS     | FWS     |
| 13                       | HARYANA, CHANDIGARH & DELHI            | SCT     | ISOL    | FWS     | WS      | WS      | SCT     | FWS     |
| 14                       | PUNJAB                                 | ISOL    | ISOL    | SCT     | FWS     | WS      | FWS     | SCT     |
| 15                       | HIMACHAL PRADESH                       | SCT     | SCT     | FWS     | FWS     | FWS     | FWS     | FWS     |
| 16                       | JAMMU AND KASHMIR AND LADAKH           | ISOL    | ISOL    | ISOL    | FWS     | WS      | SCT     | SCT     |
| 17                       | WEST RAJASTHAN                         | SCT     | ISOL    | ISOL    | ISOL    | ISOL    | ISOL    | SCT     |
| 18                       | EAST RAJASTHAN                         | FWS     | FWS     | SCT     | SCT     | FWS     | FWS     | FWS     |
| 19                       | WEST MADHYA PRADESH                    | FWS     | FWS     | FWS     | FWS     | FWS     | FWS     | WS      |
| 20                       | EAST MADHYA PRADESH                    | FWS     | FWS     | FWS     | WS      | WS      | WS      | WS      |
| 21                       | GUJRAT REGION                          | WS      | FWS     | FWS     | WS      | WS      | WS      | FWS     |
| 22                       | SAURASHTRA & KUTCH                     | WS      | FWS     | FWS     | FWS     | WS      | FWS     | FWS     |
| 23                       | KONKAN & GOA                           | WS      | WS      | WS      | WS      | WS      | WS      | WS      |
| 24                       | MADHYA MAHARASHTRA                     | FWS     | SCT     | ISOL    | ISOL    | ISOL    | ISOL    | ISOL    |
| 25                       | MARATHWADA                             | ISOL    | ISOL    | ISOL    | ISOL    | ISOL    | ISOL    | ISOL    |
| 26                       | VIDARBHA                               | SCT     | FWS     | FWS     | SCT     | SCT     | SCT     | SCT     |
| 27                       | CHHATTISGARH                           | FWS     | FWS     | FWS     | FWS     | SCT     | SCT     | SCT     |
| 28                       | COASTAL ANDHRA PRADESH                 | ISOL    | ISOL    | ISOL    | ISOL    | ISOL    | ISOL    | ISOL    |
| 29                       | TELANGANA                              | ISOL    | ISOL    | ISOL    | ISOL    | ISOL    | ISOL    | ISOL    |
| 30                       | RAYALASEEMA                            | ISOL    | ISOL    | ISOL    | ISOL    | ISOL    | ISOL    | ISOL    |
| 31                       | TAMILNADU & PUDUCHERRY                 | ISOL    | ISOL    | ISOL    | ISOL    | ISOL    | ISOL    | ISOL    |
| 32                       | COSTAL KARNATAKA                       | WS      | WS      | FWS     | FWS     | FWS     | WS      | WS      |
| 33                       | NORTH INTERIOR KARNATAKA               | ISOL    | ISOL    | ISOL    | ISOL    | ISOL    | ISOL    | ISOL    |
| 34                       | SOUTH INTERIOR KARNATAKA               | SCT     | SCT     | ISOL    | ISOL    | ISOL    | ISOL    | ISOL    |
| 35                       | KERALA AND MAHE                        | WS      | WS      | FWS     | FWS     | FWS     | FWS     | FWS     |
| 36                       | LAKSHADWEEP                            | WS      | WS      | FWS     | FWS     | FWS     | FWS     | FWS     |

- As the lead period increases forecast accuracy decreases.









- Action may be taken based on ORANGE AND REDCOLOUR warnings.
- Vulnerable regions likely urban and hilly areas action may be initiated for heavy rainfall warning.
- As the lead period increases forecast accuracy decreases.

Detailed districtwise Multi Hazard weather warning for next five days available at  
<https://mausam.imd.gov.in/responsive/districtWiseWarningGIS.php>

**Weather forecast over Delhi/NCR during 18<sup>th</sup> to 21<sup>st</sup> June 2025****Past Weather:**

There has been a fall in the minimum temperature up to 3 - 4°C and rise in the maximum temperature up to 1 - 2°C over Delhi/NCR during the past 24 hours. The maximum and minimum temperatures over Delhi were around 35 to 36°C and 22 to 25° respectively. The minimum temperature was below normal up to 3 - 4°C and the maximum temperature was below normal up to 2 - 3°C. Generally cloudy sky conditions with predominant surface wind from the east/southeast direction with wind speeds up to 16 kmph gusty to 35 kmph prevailed during the past 24 hours. Partly cloudy sky conditions with wind speed less than 8 kmph from the southeast direction prevailed over the region in the forenoon today.

**Weather Forecast:**

**18.06.2025:** Generally cloudy sky. Light to moderate rain/thunderstorm/lighting with gusty winds 40 - 50 kmph temporary reaching 60 kmph during thunderstorm towards evening/night. The maximum temperatures over Delhi are likely to be in the range of 33 to 35°C. The maximum temperature will be below normal up to 3 - 5°C. The predominant surface wind will likely be from the southeast direction with a wind speed of less than 12 kmph in the afternoon. The wind speed will gradually increase becoming 10-15 kmph from the southeast direction during evening and night.

**19.06.2025:** Partly cloudy sky. Light to Moderate rain/thunderstorm/lighting accompanied with gusty winds 30 - 40 kmph temporary reaching 50 kmph during thunderstorm towards evening/night. The maximum and minimum temperatures over Delhi are likely to be in the range of 35 to 37°C and 26 to 28°C respectively. The minimum temperature will be near normal and the maximum temperature will be below normal up to 2 - 4°C. The predominant surface wind will likely be from the southeast direction with a wind speed of less than 15 kmph during the morning hours. The wind speed will gradually decrease becoming 08-12 kmph from the south direction in the afternoon. It will decrease becoming less than 10 kmph from the southeast direction during evening and night.

**20.06.2025:** Partly cloudy sky. Very light to light rain/thunderstorm/lighting. The maximum and minimum temperatures over Delhi are likely to be in the range of 36 to 38°C and 27 to 29°C respectively. The minimum temperature will be near normal and the maximum temperature will be below normal up to 1 - 2°C. The predominant surface wind will likely be from the southeast direction with a wind speed of less than 15 kmph during the morning hours. The wind speed will gradually increase becoming less than 20 kmph from the southeast direction in the afternoon. It will increase to less than 25 kmph from the southeast direction during the evening and night.

**21.06.2025:** Generally cloudy sky. Light to moderate rain/thunderstorm/lighting accompanied with gusty winds 30 - 40 kmph temporary reaching 50 kmph during thunderstorm. The maximum and minimum temperatures over Delhi are likely to be in the range of 35 to 37°C and 26 to 28°C respectively. The minimum temperature will be below normal up to 1 - 2°C and the maximum temperature will be below normal up to 1 - 3°C. The predominant surface wind will likely be from the southeast direction with a wind speed of less than 08 kmph during the morning hours. The wind speed will gradually increase becoming less than 12 kmph from the northeast direction in the afternoon. It will increase to less than 18 kmph from the northeast direction during the evening and night.

**Impact expected and Action Suggested due to thunderstorm with lightning/gusty winds:**

- Be cautious and take precautionary measures, though there is the likelihood of thunderstorm/lighting and gusty winds (speed 40 – 50 kmph) temporarily reaching to 60 kmph during thunderstorm with dust rising surface winds.
- Breaking of tree branches, uprooting of large avenue trees, Large dead limbs blown from trees, Damage to standing crops, Minor to major damage to power and communication lines due to breaking of branches, Partial damage to vulnerable structures due to strong winds, Loose objects may fly.
- People are advised to keep a watch on the weather for worsening conditions and be ready to move to safer places accordingly, stay indoors, close windows & doors and avoid travel if possible, take safe shelters; do not take shelter under trees, do not lie on concrete floors and do not lean against concrete walls, unplug electrical/ electronic appliances, immediately get out of water bodies, keep away from all the objects that conduct electricity.

**Impact & Action Suggested due to extremely heavy falls/ very heavy rainfall:**

- ✓ **Extremely heavy rainfall (>20 cm/24 hours) likely at isolated places over Meghalaya, Gangetic West Bengal, Odisha on 18<sup>th</sup>, Jharkhand on 18<sup>th</sup> & 19<sup>th</sup> June.**
- ✓ **Heavy to very heavy rainfall** likely to continue over Northeast India during 18<sup>th</sup>-24<sup>th</sup>; Konkan & Goa, Madhya Maharashtra, East Rajasthan on 18<sup>th</sup> & 19<sup>th</sup>, Gujarat State on 18<sup>th</sup>, Chhattisgarh during 18<sup>th</sup>-20<sup>th</sup>, Madhya Pradesh, Uttar Pradesh during 20<sup>th</sup> -22<sup>nd</sup>, Uttarakhand during 21<sup>st</sup>-23<sup>rd</sup> and Himachal Pradesh on 22<sup>nd</sup> & 23<sup>rd</sup> June.

**Impact Expected**

- Localized Flooding of roads, water logging in low lying areas and closure of underpasses mainly in urban areas of the above region.
- Occasional reduction in visibility due to heavy rainfall.
- Disruption of traffic in major cities due to water logging in roads leading to increased travel time.
- Minor damage to kutcha roads.
- Possibilities of damage to vulnerable structure.
- Localized Landslides/Mudslides/landslips/mudslips/landsinks/mudsinks.
- Damage to horticulture and standing crops in some areas due to inundation.
- It may lead to riverine flooding in some river catchments (for riverine flooding please visit Web page of CWC)

**Action Suggested**

- Check for traffic congestion on your route before leaving for your destination.
- Follow any traffic advisories that are issued in this regard.
- Avoid going to areas that face the water logging problems often.
- Avoid staying in vulnerable structure.

**Impact expected and action suggested due to isolated thunderstorm with lightning/gusty & Squally winds over**

**Thundersquall (wind speed reaching 50-60 kmph gusting to 70 kmph)** at isolated places over East Uttar Pradesh on 18<sup>th</sup>, Madhya Pradesh on 18<sup>th</sup> & 19<sup>th</sup> June.

**Impact expected:**

- Breaking of tree branches, uprooting of large avenue trees. Large dead limbs blown from trees. Damage to Standing crops.
- Minor to Major damage to banana and papaya trees.
- Minor to major damage to power and communication lines due to breaking of branches.
- Strong wind/hail may damage plantation, horticulture and standing crops.
- Partial damage to vulnerable structures due to strong winds.
- Minor damage to kutcha houses/walls and huts.
- Loose objects may fly.

**Action suggested:**

- People are advised to keep a watch on the weather for worsening conditions and be ready to move to safer places accordingly.
- Stay indoors, close windows & doors and avoid travel if possible.
- Take safe shelters; do not take shelter under trees.
- Do not lie on concrete floors and do not lean against concrete walls.
- Unplug electrical/ electronic appliances.
- Immediately get out of water bodies.
- Keep away from all the objects that conduct electricity.

### Agromet advisories for likely impact of Heavy / Heavy to Very Heavy / Extremely Heavy Rainfall

- In **Gangetic West Bengal**, postpone sowing of *kharif* rice. Ensure proper drainage in already sown rice nurseries, sesame, jute and groundnut. Cover the young seedlings of *kharif* rice with plastic sheets or agro-shade nets to protect them from heavy rains. Keep the harvested produce of *Boro* rice at safer place and use tarpaulin or polythene sheets to protect harvested grain from heavy rain.
- In **Sub-Himalayan West Bengal**, maintain proper drainage channels in rice nurseries and fields of jute and ginger to avoid water stagnation.
- In **North Odisha**, postpone sowing of rice nursery and ensure proper drainage from already sown rice nurseries, maize and vegetables to prevent water logging. Postpone sowing of millets, maize, pulses and vegetables during heavy rain. Cover rice and vegetable nurseries with plastic sheets to prevent washing away of seeds.
- In **Jharkhand**, make necessary arrangements to drain out excess water from rice nurseries, moong, vegetables and fruit orchards. Postpone harvesting of summer maize and keep the already harvested produce in safe place.
- In **South Gujarat**, postpone sowing of soybean and rice nurseries. Ensure proper drainage facilities in already sown rice nurseries, soybean and also in banana plantations to prevent water logging. Provide support to sugarcane and banana to prevent lodging.
- In **Saurashtra**, drain out excess water and ensure proper drainage facility from vegetable fields.
- In **Rajasthan**, cover the harvested green gram and vegetables and store in safe place.
- In **Kerala**, ensure proper drainage facilities in rice nurseries, transplanted rice fields, coconut and banana plantations to prevent water logging. Undertake propping in banana to protect the plants from heavy rains.
- In **Tamil Nadu**, ensure proper drainage facilities in rice nurseries, cotton, sugarcane, groundnut and transplanted rice fields, coconut and banana plantations to prevent water logging. Provide staking or support to tender plants of cotton, young plants of sugarcane and fruit-bearing plants of banana to avoid lodging.
- In **Coastal Karnataka**, postpone nursery sowing of rice. Ensure proper drainage facilities in rice nurseries, banana, coconut and arecanut plantations to prevent water logging.
- In **Konkan & Goa and ghat areas of Madhya Maharashtra**, make arrangement to drain out excess water from rice nurseries to prevent water logging.
- In **Bhabar and Tarai Zone of Uttarakhand**, ensure proper drainage in already sown crops of pigeon pea, millets and soybean.
- In **Assam**, keep the harvested produce of sesame, foxtail millet, *Boro* rice, banana and citrus at safer places. Ensure proper drainage in *Sali* rice nursery, maize and sugarcane fields, arecanut and coconut plantations to prevent water logging.
- In **Meghalaya**, postpone nursery sowing of rice especially in valleys. Ensure proper drainage in the fields of maize, ginger, French bean, cowpea, vegetables and around rice nurseries to prevent water logging. Provide strong bamboo stakes or trellis support to cow pea, cucumber and bottle gourd to prevent vines from trailing on wet ground. Provide support to banana plant to prevent lodging.
- In **Arunachal Pradesh**, keep the harvested produce of soybean and vegetables such as chilli and okra at a safer place. Ensure proper drainage in rice nurseries, kiwi and apple orchards to avoid water logging.
- **Nagaland** – Ensure proper drainage in *jhum* rice and rice nursery. Drain out excess water from orchards.



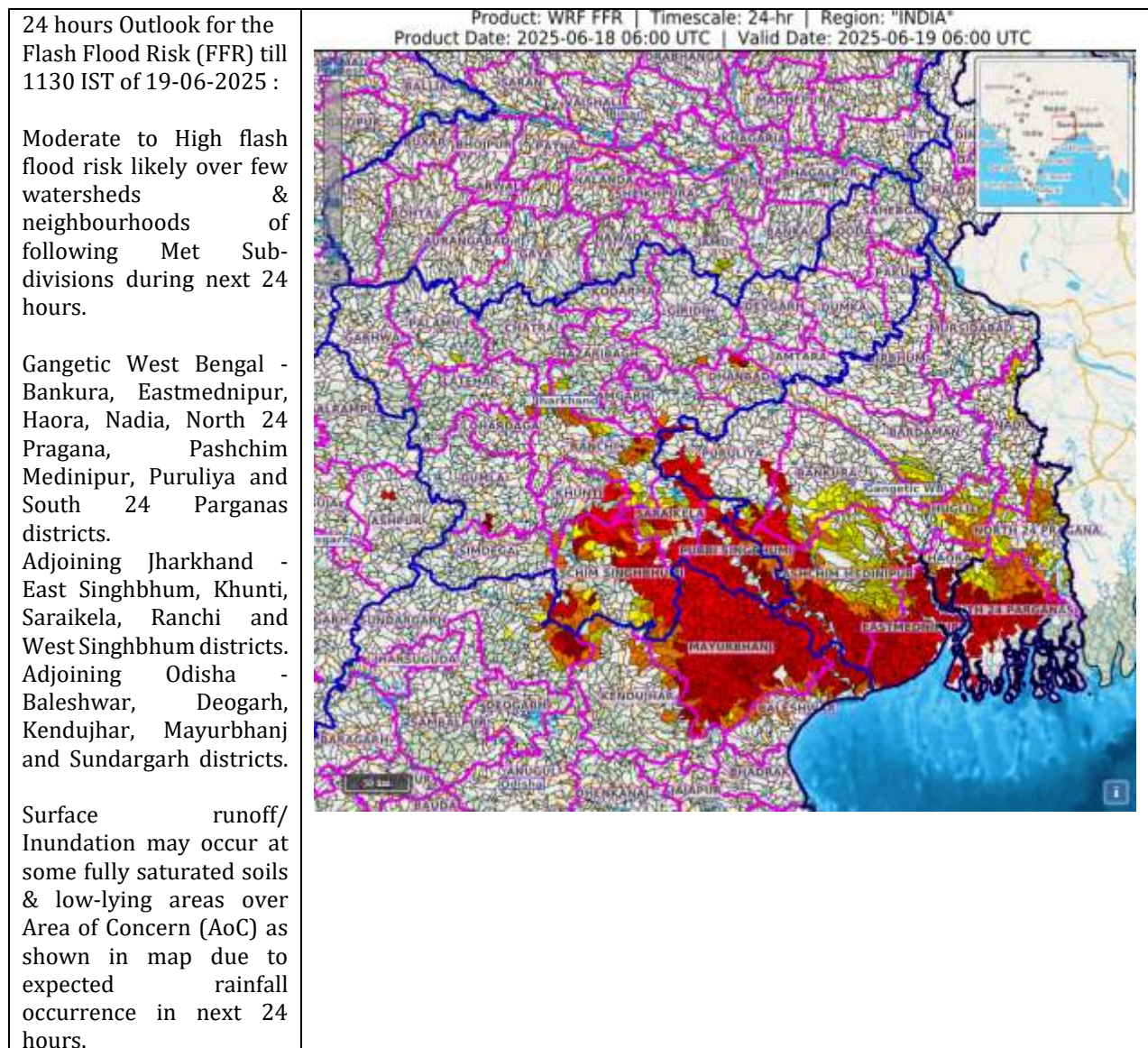
## Livestock / Fishery

- Keep the animals inside the shed during heavy rainfall and provide them balanced feed.
- Store feed and fodder in a safe place to prevent spoilage.
- Construct an outlet with proper netting around the ponds to drain out excess water, thereby preventing fish from escaping in case of overflow.

## Agromet advisories for likely impact of Thunderstorm / Gusty Winds / Squally Winds

- Provide mechanical support to horticultural crops and staking or support to vegetables and young fruit plants / fruit-bearing plants to avoid lodging due to strong winds.

## Flash Flood Guidance:



24 hours Outlook for the Flash Flood Risk (FFR) till 1130 IST of 19-06-2025 : Low to Moderate flash flood risk likely over few watersheds & neighbourhoods of following Met Sub-divisions during next 24 hours.

Assam & Meghalaya - Cachar, Hailakandi, N.C Hills, Karimganj, East Khasi Hills, South Garo Hills, West Khasi Hills and Jaintia Hills districts.

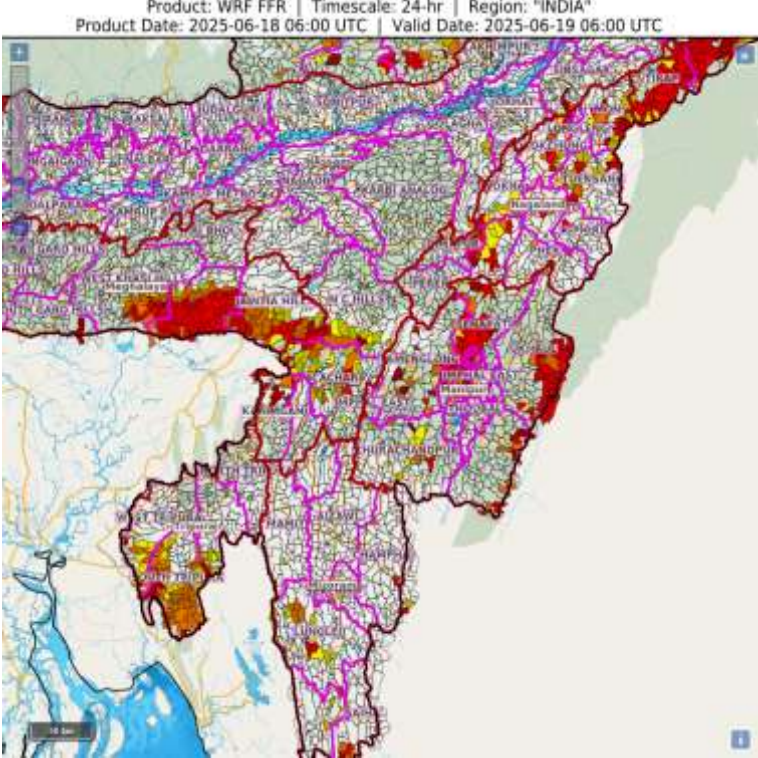
Nagaland                Mizoram  
Manipur Tripura (NMMT)

-  
Nagaland    -    Dimapur, Kiphire, Kohima, Longleng, Mokokchung, Mon, Peren, Phek, Tuensang, Wokha, Zunheboto

Manipur    -    Chandel, Churachandpur, Imphal East, Imphal West, Senapati, Tamenglong, Ukhrul;

Mizoram    -    Aizawl, Lawngtlai, Lunglei, Saiha, Champhai, Serchhip;;  
Tripura - South Tripura, West Tripura and Dhalai districts

Surface                runoff/  
Inundation may occur at some fully saturated soils & low-lying areas over Area of Concern (AoC) as shown in map due to expected rainfall occurrence in next 24 hours.



## Legends & abbreviations:

- ❖ **Heavy Rain:**64.5-115.5mm; **Very Heavy Rain:**115.6-204.4mm; **Extremely Heavy Rain:** >204.4mm.
- ❖ **Obsy:** Observatory; Automatic Weather Station; **ARG:** Automatic Rain Gauge; **dist:** District; **NH:** National Highway; **KVK:** Krishi Vigyan Kendra; **DVC:** Damodar Valley Corporation; **PTO:** Part Time Office, **Aero:** Aerodrome, **IAF:** Indian Air Force.
- ❖ **Region wise classification of meteorological Sub-Divisions:**
  - **Northwest India:** Western Himalayan Region (Jammu-Kashmir-Ladakh-Gilgit-Baltistan-Muzaffarabad, Himachal Pradesh and Uttarakhand); Punjab, Haryana-Chandigarh-Delhi; West Uttar Pradesh, East Uttar Pradesh, West Rajasthan and East Rajasthan.
  - **Central India:** West Madhya Pradesh, East Madhya Pradesh, Vidarbha and Chhattisgarh.
  - **East India:** Bihar, Jharkhand, Sub-Himalayan West Bengal & Sikkim; Gangetic West Bengal, Odisha and Andaman & Nicobar Islands.
  - **Northeast India:** Arunachal Pradesh, Assam & Meghalaya and Nagaland, Manipur, Mizoram & Tripura.
  - **West India:** Gujarat Region, Saurashtra & Kutch, Konkan & Goa, Madhya Maharashtra and Marathawada.
  - **South India:** Coastal Andhra Pradesh & Yanam, Telangana, Rayalaseema, Coastal Karnataka, North Interior Karnataka, South Interior Karnataka, Kerala & Mahe, Tamil Nadu, Puducherry & Karaikal and Lakshadweep.



## LEGENDS

1. अंडमान और निकोबार द्वीपसमूह

2. अरुणाचल प्रदेश

3. असम और मेघालय

4. नागालैंड, मणिपुर, मिजोरम और त्रिपुरा

5. उप-हिमालयी पश्चिम बंगाल और सिक्किम

6. गंगीय पश्चिम बंगाल

7. ओडिशा

8. झारखंड

9. बिहार

10. पूर्वी उत्तर प्रदेश

11. पश्चिम उत्तर प्रदेश

12. उत्तराखंड

13. हरियाणा, चंडीगढ़ और दिल्ली

14. पंजाब

15. हिमाचल प्रदेश

16. जम्मू और कश्मीर और लद्दाख

17. पश्चिम राजस्थान

18. पूर्वी राजस्थान

19. पश्चिम मध्य प्रदेश

20. पूर्वी मध्य प्रदेश

21. गुजरात

22. सौराष्ट्र

23. कोंकण और गोवा

24. मध्य महाराष्ट्र

25. मराठवाड़ा

26. विदर्भ

27. छत्तीसगढ़

28. तटीय आंध्र प्रदेश और यनम

29. तेलंगाना

30. रायलसीमा

31. तमिलनाडु, पुडुचेरी और कराईकल

32. तटीय कर्नाटक

33. आंतरिक उत्तरी कर्नाटक

34. आंतरिक दक्षिणी कर्नाटक

35. केरल और माहे

36. लक्षद्वीप



1. Andaman & Nicobar Islands

2. Arunachal Pradesh

3. Assam & Meghalaya

4. Nagaland, Manipur, Mizoram & Tripura

5. Sub-Himalayan West Bengal & Sikkim

6. Gangetic West Bengal

7. Odisha

8. Jharkhand

9. Bihar

10. East Uttar Pradesh

11. West Uttar Pradesh

12. Uttarakhand

13. Haryana, Chandigarh & Delhi

14. Punjab

15. Himachal Pradesh

16. Jammu & Kashmir and Ladakh

17. West Rajasthan

18. East Rajasthan

19. West Madhya Pradesh

20. East Madhya Pradesh

21. Gujarat

22. Saurashtra

23. Konkan & Goa

24. Madhya Maharashtra

25. Marathwada

26. Vidarbha

27. Chhattisgarh

28. Coastal Andhra Pradesh & Yanam

29. Telangana

30. Rayalaseema

31. Tamilnadu, Puducherry & Karaikal

32. Coastal Karnataka

33. North Interior Karnataka

34. South Interior Karnataka

35. Kerala & Mahe

36. Lakshadweep

## SPATIAL DISTRIBUTION (% of Stations reporting)

| % Stations | Category                            | % Stations | Category                     |
|------------|-------------------------------------|------------|------------------------------|
| 76-100     | Widespread (WS/Most Places)         | 26-50      | Scattered (SCT/A Few Places) |
| 51-75      | Fairly Widespread (FWS/Many Places) | 1-25       | Isolated (ISOL)              |



Fog



Heavy Snow



Cold Wave



Heavy Rain



Dust Storm



Cold Day



Very Heavy Rain



Heat Wave



Ground Frost



Extremely Heavy Rain



Warm Night



Thunder & Lightning



Hot Day



Hailstorm



Hot & Humid



Dust Raising Winds



Strong Surface Winds

### COLOUR CODED WARNING

No Warning (No Action)

Watch (Be Aware)

Alert (Be Prepared To Take Action)

Warning (Take Action)

### Probabilistic Forecast

| Terms       | Probability of Occurrence (%) |
|-------------|-------------------------------|
| Unlikely    | < 25                          |
| Likely      | 25 - 50                       |
| Very Likely | 50 - 75                       |
| Most Likely | > 75                          |

\* Red colour warning does not mean "Red Alert", Red colour warning means "Take Action".

Forecast and Warning for any day is valid from 0830 hours IST of day till 0830 hours IST of next day.

For more details, kindly visit <https://mausam.imd.gov.in> or contact: 011-2434-4599

(Service to the Nation since 1875)



### DEFINITION/CRITERIA

#### Rain/ Snow \*

Heavy: 64.5 to 115.5 mm/cm \*  
Very Heavy: 115.6 to 204.4 mm/cm \*  
Extremely Heavy: > 204.4 mm/cm \*

#### Heat Wave

When maximum temperature of a station reaches  $\geq 40^{\circ}\text{C}$  for plains and  $\geq 30^{\circ}\text{C}$  for hilly regions  
(a) Based on Departure from normal

Heat Wave: Maximum Temperature Departure from normal  $4.5^{\circ}\text{C}$  to  $6.4^{\circ}\text{C}$ .

Severe Heat Wave: Maximum Temperature Departure from normal  $\geq 6.5^{\circ}\text{C}$

(b). Based on Actual maximum temperature

Heat Wave: When actual maximum temperature  $\geq 45^{\circ}\text{C}$ .

Severe Heat Wave: When actual maximum temperature  $\geq 47^{\circ}\text{C}$ .

(c). Criteria for heat wave for coastal stations

When maximum temperature departure is  $> 4.5^{\circ}\text{C}$  from normal. Heat Wave may be described provided maximum temperature  $\geq 37^{\circ}\text{C}$ .

#### Warm Night

When maximum temperature remains  $40^{\circ}\text{C}$

Warm Night: When minimum temperature departure  $4.5^{\circ}\text{C}$  to  $6.4^{\circ}\text{C}$ .

Severe Warm Night: When minimum temperature departure  $> 6.4^{\circ}\text{C}$ .

#### Cold Wave

When minimum temperature of a station  $\leq 10^{\circ}\text{C}$  for plains and  $\leq 0^{\circ}\text{C}$  for hilly regions.

(a). Based on departure

Cold Wave: Minimum Temperature Departure from normal  $-4.5^{\circ}\text{C}$  to  $-6.4^{\circ}\text{C}$ .

Severe Cold Wave: Minimum Temperature Departure from normal  $\leq -6.5^{\circ}\text{C}$

(b) Based on actual Minimum Temperature (for Plains only)

Cold Wave: When Minimum Temperature is  $\leq 4.0^{\circ}\text{C}$

Severe Cold Wave: When Minimum Temperature is  $\leq 2.0^{\circ}\text{C}$

(c) For Coastal Stations

When Minimum Temperature departure is  $\leq -4.5^{\circ}\text{C}$  & actual Minimum Temperature is  $\leq 15^{\circ}\text{C}$

#### Cold Day

When minimum temperature of a station  $\leq 10^{\circ}\text{C}$  for plains and  $\leq 0^{\circ}\text{C}$  for hilly regions

Based on departure

Cold Day: Maximum Temperature Departure from normal  $-4.5^{\circ}\text{C}$  to  $-6.4^{\circ}\text{C}$ .

Severe Cold Day: Maximum Temperature Departure from normal  $\leq -6.5^{\circ}\text{C}$

#### Fog

Phenomenon of small droplets suspended in air and the horizontal visibility  $< 1\text{km}$

Moderate Fog: When the visibility between 500-200 metres

Dense Fog: when the visibility between 50- 200 metres

Very Dense Fog: when the visibility  $< 50$  metres

#### Thunderstorm

Sudden electrical discharges manifested by a flash of light (Lightning) and a sharp rumbling sound (thunder)

#### Dust/Sand Storm

An ensemble of particles of dust or sand energetically lifted to great heights by a strong and turbulent wind.

#### Frost

Ice deposits on ground

Air temperature  $\leq 4^{\circ}\text{C}$  ( over Plains)

#### Squall

A strong wind that rises suddenly, lasts for atleast 1 minute.

Moderate: Wind speed 52-61 kmph

Severe: Wind speed 62-67 kmph

Very Severe: Wind speed  $> 67$  kmph

#### Sea State

Effect of various waves in the sea over specific area

Rough to very rough: Wind speed 41-62 kmph (22-33 knots) & Wave height 2.5-6 metre

High to very high: Wind speed 63-117 kmph ( 34-63 knots) & Wave height 6-14 metre

Phenomenal: Wind speed  $> 117$  kmph ( $> 63$  knots) & Wave height  $> 14$  metre

#### Cyclone

Cyclonic Storm: Wind speed 62-67 kmph (34-47 knots)

Severe Cyclonic Storm: Wind speed 88-117 kmph (48-63 knots)

Very Severe Cyclonic Storm: Wind speed 118-165 kmph (64 - 89 knots)

Extremely Severe Cyclonic Storm: Wind speed 166-220 kmph (90 -119 knots)

Super Cyclone Storm: Wind speed  $> 220$  kmph ( $> 119$  knots)

\* Red colour warning does not mean "Red Alert", Red colour warning means "Take Action".

Forecast and Warning for any day is valid from 0830 hours IST of day till 0830 hours IST of next day.

For more details, kindly visit <https://mausam.imd.gov.in> or contact: 011-2434-4599

(Service to the Nation since 1875)

**Hot and Humid:** When maximum temperatures remain  $3^{\circ}\text{C}$  above normal along with the above normal relative humidity.