



Government of India  
Ministry of Earth Sciences  
India Meteorological Department



Press Release

Date: 19<sup>th</sup> June, 2025

Time of Issue: 1400 hours IST

**Subject: (i) Southwest monsoon further advanced over most parts of Bihar and some more parts of East Uttar Pradesh today, on 19<sup>th</sup> June.**

**(ii) Very heavy to extremely heavy rainfall at isolated places likely over Gujarat, north Konkan, Madhya Maharashtra, West Bengal, Odisha on 19<sup>th</sup> and Jharkhand on 19<sup>th</sup> & 20<sup>th</sup> June, 2025.**

**(iii) Heavy to very heavy rainfall likely to continue over Northeast India during next 7 days.**

**Southwest Monsoon: (Annexure I):**

- ❖ Southwest monsoon further advanced over most parts of Bihar and some more parts of East Uttar Pradesh today, on 19<sup>th</sup> June.
- ❖ The Northern Limit of Monsoon continue to pass through 25.0°N/60°E, 25.0°N/65°E, 25.5°N/70°E, Barmer, Jodhpur, Jaipur, Gwalior, Khajuraho, Sonbhadra, Ballia, 28.0°N/83.5°E and 30.5°N/81.5°E.
- ❖ Conditions are favourable for further advance of Southwest monsoon over remaining parts of North Arabian Sea, some more parts of Rajasthan, remaining parts of Madhya Pradesh, some more parts of Uttar Pradesh, some parts of Uttarakhand, Himachal Pradesh, Jammu-Kashmir-Ladakh-Gilgit-Baltistan-Muzaffarabad during next 2-3 days. Conditions are also becoming favourable for further advance of Southwest monsoon over some parts of Punjab and Haryana during subsequent 2-3 days.

**Realised weather during past 24 hours till 0830 hours IST of today, the 19<sup>th</sup> June, 2025 (Annexure II):**

- ❖ **Heavy to very heavy rainfall at some places with extremely heavy falls** has been recorded at isolated places over north Konkan, Gujarat Region, Gangetic West Bengal, Jharkhand and Meghalaya.
- ❖ **Heavy to very heavy rainfall** has been recorded at isolated places over Chhattisgarh, Odisha, Sub-Himalayan West Bengal, Bihar, Madhya Maharashtra, Assam, Tripura; **Heavy rainfall** at isolated places over West Madhya Pradesh, West Uttar Pradesh, East Rajasthan, Saurashtra, Andaman Islands, Nagaland, Manipur, Mizoram, Kerala and Tamil Nadu.
- ❖ **Thunderstorm accompanied with Squally/Gusty winds with speed 50-70 kmph** at isolated places over Konkan, Assam & Meghalaya, Madhya Maharashtra, Gangetic West Bengal.

For more details of realised weather, kindly refer **Annexure II**,

Detailed observations of Maximum Temperature during past 24 hours till 0830 hours IST of today are appended in **Annexure III**.

**si. Weather Systems, Forecast and Warnings (refer to Annexure IV & V):**

**East & Central India:**

- ✓ **Extremely heavy rainfall (>20 cm/24 hours) likely at isolated places over Jharkhand on 19<sup>th</sup> June.**
- ✓ Isolated **heavy rainfall** also likely over Sub-Himalayan West Bengal & Sikkim during 22<sup>nd</sup>-24<sup>th</sup>, Gangetic West Bengal on 22<sup>nd</sup> & 25<sup>th</sup>, Bihar during 19<sup>th</sup>-23<sup>rd</sup>; Jharkhand, Odisha during 19<sup>th</sup>-22<sup>nd</sup>, Madhya Pradesh during 19<sup>th</sup>-25<sup>th</sup> June with **very heavy rainfall** over Bihar, West Bengal, Odisha on 19<sup>th</sup>, Jharkhand on 20<sup>th</sup>, East Madhya Pradesh on 21<sup>st</sup>; Madhya Pradesh on 24<sup>th</sup> & 25<sup>th</sup> and over Chhattisgarh on 19<sup>th</sup> & 20<sup>th</sup> June.
- ✓ Light/moderate rainfall at most/many places accompanied with **thunderstorm, lightning & gusty winds speed reaching 40-50 kmph** likely over Andaman & Nicobar Islands on 19<sup>th</sup> & 20<sup>th</sup>; Madhya Pradesh, Vidarbha, Chhattisgarh, Gangetic West Bengal, Bihar, Jharkhand, Odisha during 19<sup>th</sup>-25<sup>th</sup> June.

**West India:**

- ✓ **Extremely heavy rainfall (>20 cm/24 hours) likely at isolated places over Konkan, ghat areas of Madhya Maharashtra, Gujarat Region on 19<sup>th</sup> June.**
- ✓ Isolated **heavy rainfall** likely over Konkan & Goa, Madhya Maharashtra, Gujarat state during 19<sup>th</sup>-25<sup>th</sup> with **very heavy rainfall** on Madhya Maharashtra on 20<sup>th</sup>, Gujarat region on 22<sup>nd</sup> & 23<sup>rd</sup> June.
- ✓ Light/moderate rainfall at most/many places likely over Gujarat State, Konkan & Goa, Madhya Maharashtra, Marathawada during 19<sup>th</sup> -25<sup>th</sup> June

#### Northeast India:

- ✓ Light/moderate rainfall at many/most places accompanied with **thunderstorm, lightning and isolated heavy to very heavy rainfall** likely to continue over Northeast India during next 7 days.

#### Northwest India:

- ✓ Isolated **heavy rainfall** likely over Uttarakhand, Uttar Pradesh, East Rajasthan during 19<sup>th</sup>-25<sup>th</sup>; Jammu-Kashmir-Ladakh-Gilgit-Baltistan-Muzaffarabad on 22<sup>nd</sup> & 25<sup>th</sup>; Himachal Pradesh, Punjab during 21<sup>st</sup>-25<sup>th</sup>; Haryana, Chandigarh during 20<sup>th</sup>-25<sup>th</sup>; with **very heavy rainfall** on West Uttar Pradesh on 19<sup>th</sup>; East Uttar Pradesh on 20<sup>th</sup> & 21<sup>st</sup>; East Rajasthan on 19<sup>th</sup> & 23<sup>rd</sup>, Uttarakhand on 22<sup>nd</sup>, Himachal Pradesh on 22<sup>nd</sup> & 25<sup>th</sup> June.
- ✓ Light/moderate rainfall at most/many places accompanied with **thunderstorm, lightning & gusty winds speed reaching 40-50 kmph** likely over Northwest India during 19<sup>th</sup>-24<sup>th</sup> June.

#### South Peninsular India:

- ✓ Isolated **heavy rainfall** likely over Kerala & Mahe on 19<sup>th</sup> & during 22<sup>nd</sup>-25<sup>th</sup>; Coastal Karnataka on 19<sup>th</sup> and during 21<sup>st</sup>-25<sup>th</sup> June.
- ✓ **Strong surface winds** (speed reaching 40-60 kmph) very likely over Kerala & Mahe, Lakshadweep, Karnataka on 19<sup>th</sup>, Coastal Andhra Pradesh & Yanam, Telangana, Rayalaseema during 19<sup>th</sup> -21<sup>st</sup> June.
- ✓ Light/moderate rainfall at many/some places accompanied with isolated **thunderstorm, lightning** over Tamil Nadu, Puducherry & Karaikal, Kerala & Mahe, Lakshadweep, Karnataka on 19<sup>th</sup>; Coastal Andhra Pradesh & Yanam, Rayalaseema, Telangana during 19<sup>th</sup>-23<sup>rd</sup> June.

#### Maximum Temperature Forecast:

- ❖ Fall by 2-4°C in maximum temperatures likely over Madhya Pradesh during next 5 days and no large change thereafter.
- ❖ No significant change in maximum temperatures likely over rest parts of the country.

#### Hot & Humid Conditions warnings:

- ❖ **Hot & Humid conditions** very likely in isolated pockets of Tamil Nadu, Coastal Andhra Pradesh & Yanam, Rayalaseema during 19<sup>th</sup>-21<sup>st</sup> June.

#### Fishermen Warnings:

- ❖ Fishermen are advised not to venture into:
  - ✓ Central and adjoining north Arabian Sea during 19<sup>th</sup> to 24<sup>th</sup> June.
  - ✓ Along & off Gujarat coasts during 19<sup>th</sup> -24<sup>th</sup> and Maharashtra, Konkan & Goa and Karnataka coasts on 19<sup>th</sup> June.
  - ✓ Westcentral Arabian Sea and along & off Somalia, Oman and Yemen coasts during 19<sup>th</sup> -24<sup>th</sup> June.
  - ✓ Central and adjoining North Bay of Bengal on 19<sup>th</sup> and westcentral and adjoining eastcentral Bay of Bengal during 20<sup>th</sup> to 22<sup>nd</sup> June and westcentral & adjoining southwest Bay of Bengal on 23<sup>rd</sup> June.
  - ✓ Comorin Area and Gulf of Mannar during 21<sup>st</sup> to 24<sup>th</sup> June.

(2) Small vessels are advised not to ply,

(3) Suspension of nearshore recreation activities due to erosion and wave surges during swell.

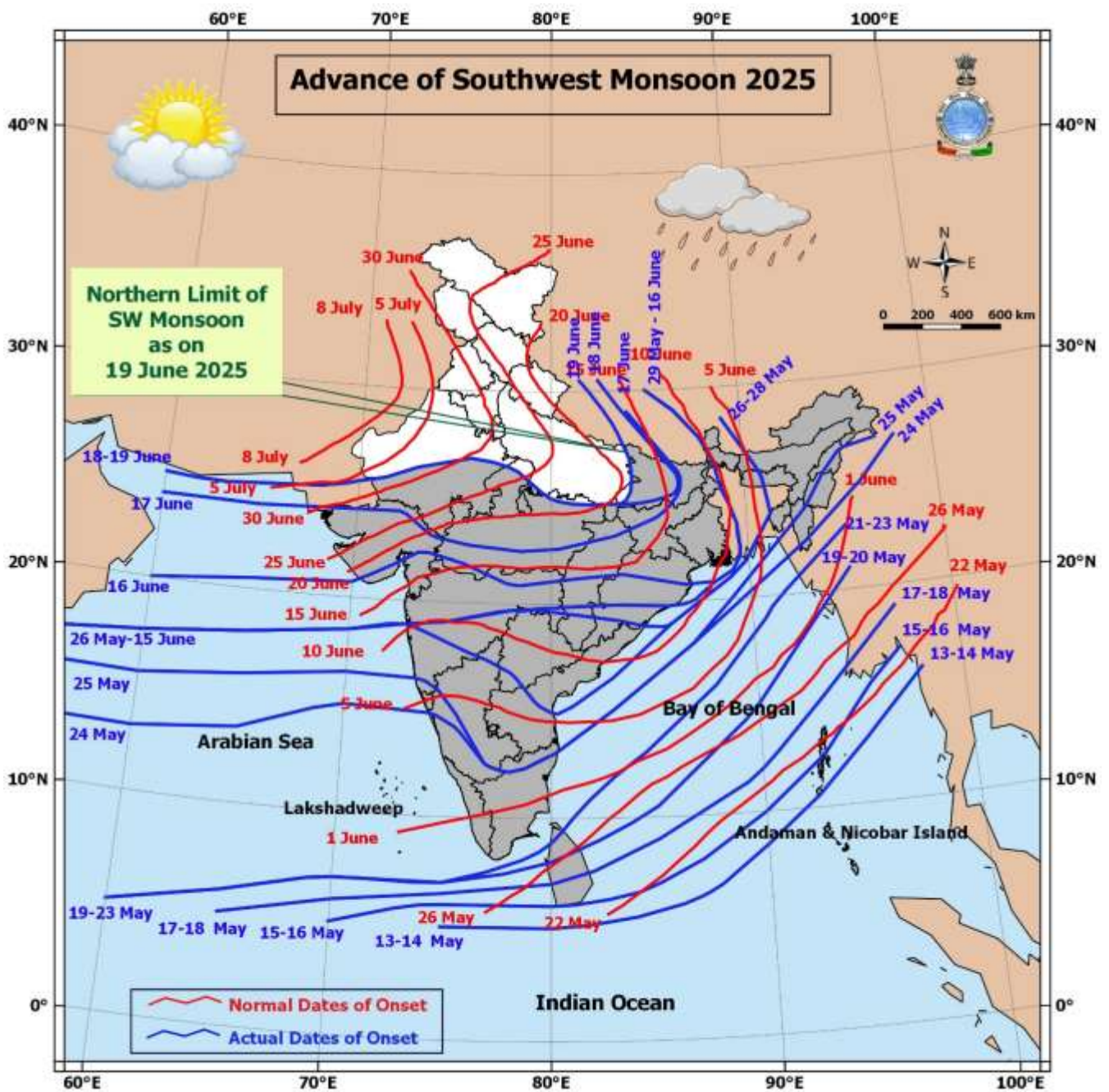
#### ii. Weather conditions and forecast over Delhi/NCR during 19<sup>th</sup> June to 22<sup>nd</sup> June, 2025 (Annexure VI)

For more details, kindly refer National Weather Bulletin:

[https://mausam.imd.gov.in/responsive/all\\_india\\_forecast\\_bulletin.php](https://mausam.imd.gov.in/responsive/all_india_forecast_bulletin.php)

For District wise warnings refer: <https://mausam.imd.gov.in/responsive/districtWiseWarningGIS.php>

# ANNEXURE I



## ANNEXURE II

### Significant weather reported during past 24 hours till 0830 hours IST of today:

### Rainfall recorded (in cm) reported during past 24 hours till 0830 hours IST of today, the 19<sup>th</sup> June:

- ❖ **Assam & Meghalaya:** Mawsynram (dist East Khasi Hills) 31; Cherrapunji(rkm) (dist East Khasi Hills), Mawkyrwat (dist South West Khasi Hills) 20 Each; Cherrapunji (dist East Khasi Hills) 19; Mawkyrwat ARG (dist South West Khasi Hills) 13; Mawphlang (dist East Khasi Hills) 11; Bijni ARG (dist Chirang) 8; Kokrajhar (dist Kokrajhar), Khliehriat (dist East Jaintia Hills) 7 Each;
- ❖ **Jharkhand:** Bau Kanke (dist Ranchi) 30, Nimdih (dist Seraikela-kharsawan) 29, Jamshedpur (dist East Singhbhum) 26, Jamshedpur Aero (dist East Singhbhum) 25, Chandwa (dist Latehar) 24, Bandgaon (dist West Singhbhum) 24, Bariyatu (dist Latehar) 22, Herhanj (dist Latehar) 20, Ghatsila (dist East Singhbhum) 20, Bhurkunda (dist Ramgarh) 19, Dhalbhumgarh (dist East Singhbhum) 19, Kuru (dist Lohardaga) 18, Chandil (dist Seraikela-kharsawan) 18, Sisai (dist Gumla) 18, Burmu (dist Ranchi) 18, Garu (dist Latehar) 17, Latehar (dist Latehar) 17, Goilkeria (dist West Singhbhum) 17, Potka (dist East Singhbhum) 16, Mandar (dist Ranchi) 16, Saryu (dist Latehar) 16, Kharsema (dist Seraikela-kharsawan) 16, Manoharpur (dist West Singhbhum) 16, Patamda (dist East Singhbhum) 15, Gurabandha (dist East Singhbhum) 15, Ranchi Aero (dist Ranchi) 15, Latehar Balumat Kvk Aws (dist Latehar) 15, Gudri (dist West Singhbhum) 15, Icar Namkum (dist Ranchi) 14, Rania (dist Khunti) 14, Boram (dist East Singhbhum) 14, Torpa (dist Khunti) 14, Anandpur (dist West Singhbhum) 14, Ramgarh (dist Ramgarh) 14, Chakulia (dist East Singhbhum) 14, Panki (dist Palamu) 13, Baharagora (dist East Singhbhum) 13, Pathalgada (dist Chatra) 13, Chakradharpur (dist West Singhbhum) 13, Khalari (dist Ranchi) 12, Ormanjhi (dist Ranchi) 12, Murhu (dist Khunti) 12, Manjhari (dist West Singhbhum) 11, Tantnagar (dist West Singhbhum) 11, Mandu (dist Ramgarh) 11, Ramgarh(bdo) (dist Ramgarh) 11, Patratu (dist Ramgarh) 11, Diyakel Khunti Kvk Aws (dist Khunti) 11, Hunterganj (dist Chatra) 10,
- ❖ **Gujarat Region:** Kaprada (dist Valsad), Dangs (ahwa) (dist Dangs) 26 Each; Dharampur (dist Valsad), Subir (dist Dangs), Dang Kvk AWS (dist Dangs) 21 Each; Waghai (dist Dangs) 20; Silvassa (dist Dadara & Nagar Haveli) 18; Nanipalson (dist Valsad) 17; Vansda (dist Navsari) 16; Madhbun (dist Dadara & Nagar Haveli), Khergam (dist Navsari) 13 Each; Vapi (dist Valsad), Dolvan (dist Tapi) 11 Each; Godhra (dist Panchmahal), Pardi (dist Valsad), Mansa (dist Gandhinagar) 10 Each; Dahegam (dist Gandhinagar) 9; Chikhli (dist Navsari), Hansot (dist Bharuch), Sagbara (dist Narmada), Khanvel (dist Dadara & Nagar Haveli) 8 Each; Valia (dist Bharuch), Kapadvanj (dist Kheda), Dharoi Colony (dist Mehsana), Umerpada (dist Surat), Abad City (dist Ahmedabad) 7 Each;
- ❖ **Konkan & Goa:** Matheran (dist Raigad) 26; Wada (dist Palghar) 22; Panvel ARG (dist Raigad), Khalapur (dist Raigad) 20 Each; Pen (dist Raigad), Jawhar (dist Palghar) 19 Each; Mokheda - Fmo (dist Palghar), Uran (dist Raigad), Wakwali ARG (dist Ratnagiri) 17 Each; Sudhagad Pali (dist Raigad) 16; Palghar ARG (dist Palghar) 15; Colaba (dist Mumbai City) 14; Murbad (dist Thane), Mandangad (dist Ratnagiri), Roha (dist Raigad), Karjat ARG (dist Raigad), Vikramgad (dist Palghar), Mahad (dist Raigad), Mhasla (dist Raigad) 13 Each; Shriwardhan (dist Raigad), Alibag - IMD Part Time (dist Raigad) 12 Each; Mangaon (dist Raigad), Khed (dist Ratnagiri), Ambernath (dist Thane), Tala (dist Raigad), Dapoli ARG (dist Ratnagiri), Dahanu (dist Palghar) 11 Each; Poladpur (dist Raigad), Ulhasnagar (dist Thane) 10 Each; Tbia IMD Part Time (dist Thane), Talasari (dist Palghar), Bhiwandi (dist Thane) 9 Each; Shahapur (dist Thane), Ratnagiri (dist Ratnagiri), Sangameshwar Devrukh (dist Ratnagiri) 8 Each; Harnai IMD (dist Ratnagiri), Murud (dist Raigad), Chiplun (dist Ratnagiri), Vasai (dist Palghar), Lanja (dist Ratnagiri) 7 Each;
- ❖ **Mumbai:** Nariman Point Fire Station [MCGM]-16, **Colaba (dist Mumbai City) 14;** MCGM1 [MCGM]-13, Colaba Fire Station [MCGM]-12, Eye Hospital Grant Rd [MCGM], B Ward Office [MCGM], Colaba Pumping Station [MCGM]- 10 each, **Santacruz - Imd Obsy (dist Mumbai Suburban) 6,**
- ❖ **Gangetic West Bengal:** Kharidwar (dist Purulia) 21; Bankura(CWC) (dist Bankura) 19; Kansabati Dam (dist Bankura), Simula (dist Purulia), Phulberia (dist Purulia) 18 Each; D.p.ghat (dist Jhargram), Tusuma (dist Purulia) 17 Each; Lalgargh (dist Jhargram) 16; Purihansa (dist Purulia), Purulia (dist Purulia), Bankura (dist Bankura) 14 Each; Jhargram PTO (dist Jhargram) 10;
- ❖ **Chhattisgarh:** Kusmi (dist Balrampur) 20; Sanna (dist Jashpur) 8; Manora (dist Jashpur), Doura Kochali (dist Balrampur) 7 Each;



- ❖ **Madhya Maharashtra:** Lonavala ARG (dist Pune) 20; Mahabaleshwar (dist Satara) 19; Surgana (dist Nashik), Igatpuri (dist Nashik) 16 Each; Peth (dist Nashik), Trimbakshwar (dist Nashik) 14 Each; Harsul - Fmo (dist Nashik) 13; Nandurbar (dist Nandurbar) 11; Radhanagari (dist Kolhapur) 9; Shahada (dist Nandurbar), Ozarkhed - Fmo (dist Nashik) 8 Each; Velhe (dist Pune) 7;
- ❖ **Odisha:** Tiring (dist Mayurbhanj) 18; Bahalda (dist Mayurbhanj), Chandua Kuliana (dist Mayurbhanj) 15 Each; Jamsolaghat (dist Mayurbhanj) 13; Jamda (dist Mayurbhanj), Sarasakana (dist Mayurbhanj) 12 Each; Joshipur (dist Mayurbhanj), Kusumi (dist Mayurbhanj) 11 Each; Bangiriposi (dist Mayurbhanj), Bijatala (dist Mayurbhanj), Rairangpur (dist Mayurbhanj) 10 Each; Chandanpur (dist Mayurbhanj), Sukruli (dist Mayurbhanj), Raruana (dist Mayurbhanj) 9 Each; Champua (dist Keonjhar), Altuma (dist Dhenkanal), Balisankara (dist Sundargarh) 8 Each; Tensa (dist Sundargarh) 7;
- ❖ **Sub Himalayan West Bengal & Sikkim:** Lava (dist Kalimpong) 16; Hilla T.e. (dist Jalpaiguri) 11; Pedong (dist Kalimpong), Kalimpong (dist Kalimpong), Amfu Kalimpong (dist Kalimpong) 10 Each; Soreng ARG (dist Soreng), Chalouni Tea Estate (dist Jalpaiguri), Munsong (dist Darjeeling) 8 Each; Majitar (dist Pakyong), Jiti T.e. (dist Jalpaiguri), Kurti T.e. (dist Jalpaiguri) 7 Each;
- ❖ **Nagaland, Manipur, Mizoram & Tripura:** Belonia (dist South Tripura) 15; Bagafa (dist South Tripura) 12; Kvk South (dist South Tripura) 10; Sabroom (dist South Tripura) 8; Jiribam AWS (dist Imphal East) 7;
- ❖ **Bihar:** Imamganj (dist Gaya) 13; Kauwakol (dist Nawada) 12; Dobhi (dist Gaya), Akbarpur (dist Nawada) 11 Each; Bankey Bazar (dist Gaya) 10; Gaya AP (dist Gaya), Bodh Gaya (dist Gaya), Gobindpur (dist Nawada) 9 Each; Amas (dist Gaya) 8; Sherghati (dist Gaya), Guraru (dist Gaya), Manpur (dist Gaya) 7 Each;
- ❖ **West Uttar Pradesh:** Shikohabad (dist Firozabad) 12; Jalesar (dist Etah) 10; Tilhar (dist Shahjahanpur), Jasrana (dist Firozabad) 9 Each; Karhal (dist Mainpuri) 8;
- ❖ **Saurashtra & Kutch:** Sutrapada (dist Gir Somnath) 10; Veraval (dist Gir Somnath), Kodinar (dist Gir Somnath) 7 Each;
- ❖ **West Madhya Pradesh:** Kathiwada (dist Alirajpur) 10; Porsa (dist Morena) 8; Alirajpur (dist Alirajpur) 7;
- ❖ **Andaman & Nicobar Islands:** Port Blair (dist South Andaman) 8;
- ❖ **East Rajasthan:** Bharatpur Tehsil SR (dist Bharatpur) 8;
- ❖ **Tamil Nadu, Puducherry & Karaikal:** Chinnakalar (dist Coimbatore) 7;
- ❖ **Kerala & Mahe:** Ponnani (dist Malappuram) 7.

### **Realised Gusty Winds (kmph) During Past 24hours ending at 0830 hrs IST of today the 19<sup>th</sup> June:**

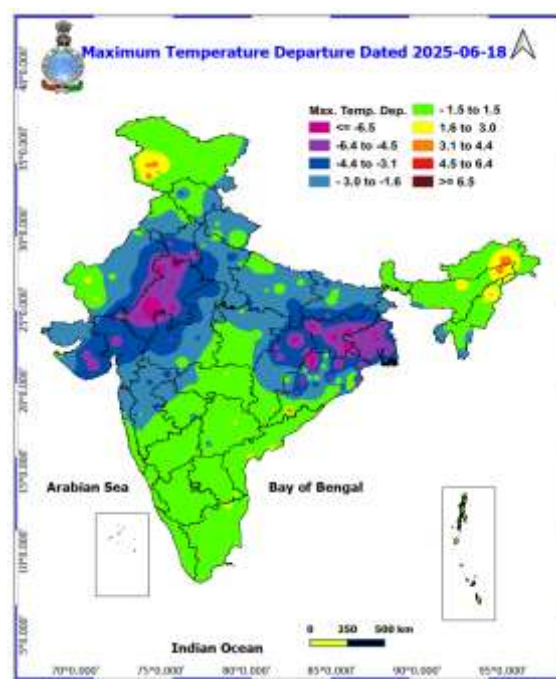
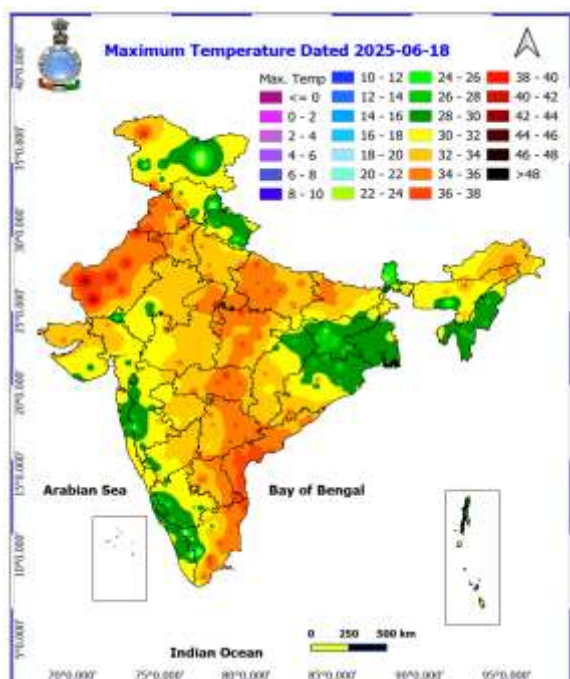
- ❖ **Konkan:** Alibag(RAIGAD)- 70 Kmph, Dapoli (Ratnagiri) -50 Kmph, Santacruz (MUMBAI)- 44 Kmph,
- ❖ **Assam & Meghalaya:** Mawkyrwat (SWKH) = 65 Kmph, 41 Kmph IN JORHAT
- ❖ **Madhya Maharashtra:** Karad (SATARA)- 63 Kmph, Kurvande (PUNE)- 57 Kmph, Mahabaleshwar(SATARA)- 61 Kmph,
- ❖ **Gangetic West Bengal:** Sagar Island (56); Amta (46); Alipore (44); Digba (43); Canning, Gangasagar (41); Nimpith (39); Bijpur (37); Sonarpur (35); Dum Dum (34); Agarpura, Burdwan, Purulia (33); Uluberia, Berhampore (30)

### Temperature observations during past 24 hours till 0830 hours IST of today:

- ❖ **Maximum temperatures were in the range of 38-43°C** over many places over West Rajasthan; at isolated places over East Uttar Pradesh, East Madhya Pradesh and Tamil Nadu, Puducherry & Karaikal; in the range of 33-37°C over many places over West Uttar Pradesh, Haryana-Chandigarh-Delhi, Bihar, Telangana; at isolated places over Madhya Maharashtra, Marathwada, Vidarbha, Coastal Andhra Pradesh & Yanam, Rayalaseema, Assam & Meghalaya, Nagaland, Manipur, Mizoram & Tripura, Gujarat state and Punjab and below 33 °C elsewhere in the remaining part of the country. **Yesterday, the highest maximum temperature of 43.2°C was reported at Jaisalmer (West Rajasthan).**
- ❖ Maximum Temperatures were appreciably above normal (3.1°C to 5.0°C) at most places over Arunachal Pradesh; at few places over Jammu-Kashmir, Ladakh- Gilgit-Baltistan-Muzaffarabad; at isolated places over Assam & Meghalaya, Odisha, Coastal Andhra Pradesh & Yanam and Tamil Nadu, Puducherry & Karaikal. above normal (1.6°C to 3.0°C) at few places over Nagaland, Manipur, Mizoram & Tripura, West Rajasthan, Vidarbha and Coastal Karnataka; at isolated places over West Uttar Pradesh, Himachal Pradesh, Konkan & Goa, Telangana and Rayalaseema. near normal (-1.5°C to 1.5°C) at many places over Andaman & Nicobar Islands, Bihar, East Madhya Pradesh, Marathwada and Kerala & Mahe; at most places over Sub Himalayan West Bengal & Sikkim, Uttarakhand, North Interior Karnataka, South Interior Karnataka and Lakshadweep; at few places over East Uttar Pradesh, Punjab and Madhya Maharashtra; at isolated places over Gangetic West Bengal.

Fig.1: Maximum Temperatures

Fig.2: Departure of Maximum Temperatures

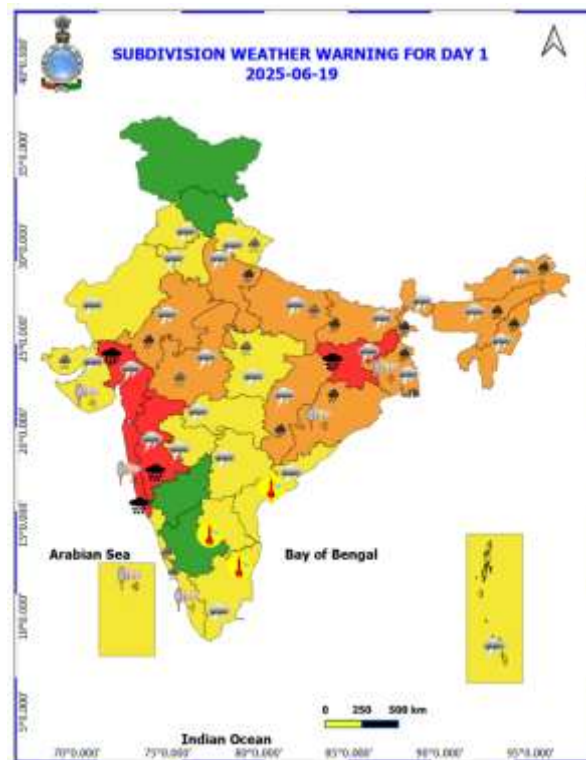


## ANNEXURE IV

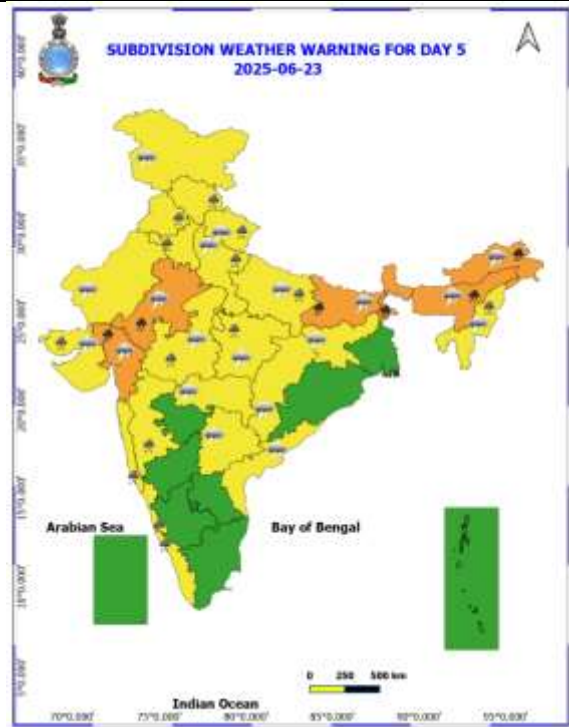
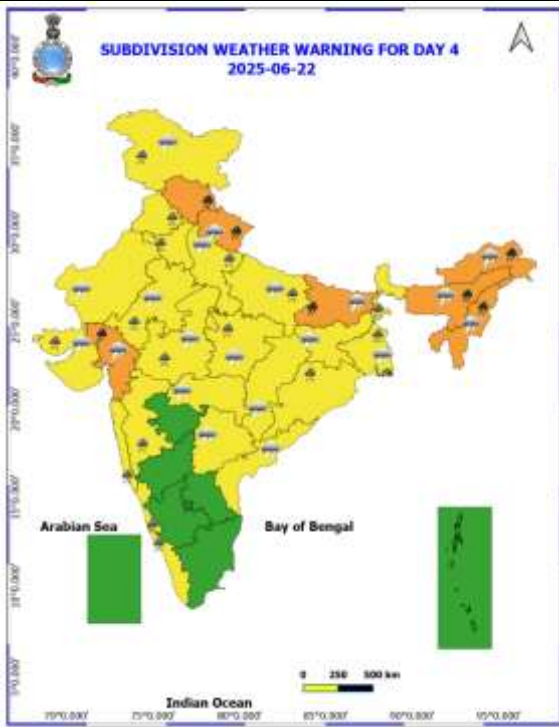
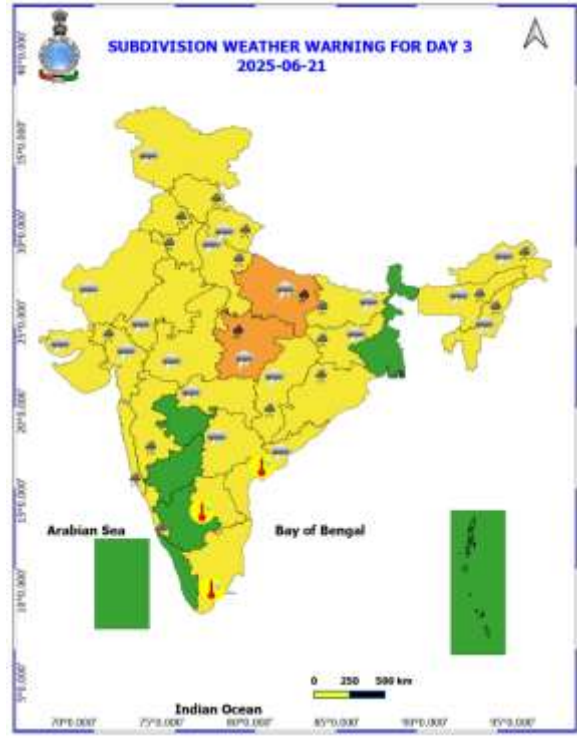
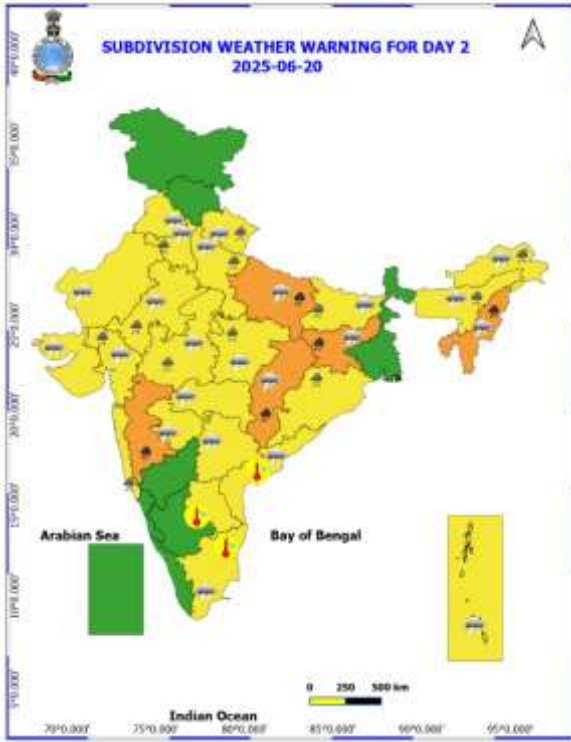
Table-1								
7 Days Rainfall Forecast								
S.No.	Subdivision	19- Jun	20- Jun	21- Jun	22- Jun	23- Jun	24- Jun	25- Jun
		Day 1	Day 2	Day 3	Day 4	Day 5	Day 6	Day 7
1	ANDAMAN & NICOBAR ISLANDS	FWS	WS	WS	WS	WS	FWS	FWS
2	ARUNACHAL PRADESH	WS	FWS	FWS	WS	WS	FWS	FWS
3	ASSAM & MEHGHALAYA	WS	WS	WS	WS	WS	WS	WS
4	NAGALAND, MANIPUR, MIZORAM AND TRIPURA	WS	WS	WS	WS	WS	WS	WS
5	SUB HIMALAYAN WEST BENGAL & SIKKIM	WS	FWS	FWS	WS	WS	WS	FWS
6	GANGETIC WEST BENGAL	WS	FWS	SCT	WS	FWS	FWS	WS
7	ODISHA	WS	FWS	FWS	FWS	SCT	FWS	FWS
8	JHARKHAND	WS	WS	FWS	FWS	FWS	FWS	WS
9	BIHAR	FWS	SCT	FWS	FWS	FWS	SCT	SCT
10	EAST UTTAR PRADESH	FWS	FWS	WS	WS	FWS	FWS	FWS
11	WEST UTTAR PRADESH	FWS	FWS	WS	WS	WS	FWS	WS
12	UTTARAKHAND	FWS	FWS	FWS	WS	FWS	FWS	FWS
13	HARYANA, CHANDIGARH & DELHI	ISOL	FWS	WS	WS	WS	SCT	WS
14	PUNJAB	ISOL	SCT	FWS	WS	FWS	SCT	WS
15	HIMACHAL PRADESH	SCT	FWS	FWS	WS	FWS	FWS	WS
16	JAMMU AND KASHMIR AND LADAKH	ISOL	ISOL	SCT	WS	FWS	FWS	SCT
17	WEST RAJASTHAN	ISOL	ISOL	ISOL	ISOL	SCT	SCT	ISOL
18	EAST RAJASTHAN	FWS	SCT	SCT	FWS	FWS	FWS	SCT
19	WEST MADHYA PRADESH	WS	FWS	FWS	FWS	FWS	FWS	WS
20	EAST MADHYA PRADESH	FWS	WS	WS	WS	WS	WS	WS
21	GUJRAT REGION	WS	FWS	WS	WS	WS	FWS	FWS
22	SAURASHTRA & KUTCH	WS	FWS	FWS	WS	FWS	FWS	FWS
23	KONKAN & GOA	WS	WS	WS	WS	WS	WS	WS
24	MADHYA MAHARASHTRA	FWS	SCT	ISOL	ISOL	ISOL	ISOL	ISOL
25	MARATHWADA	ISOL	ISOL	ISOL	ISOL	ISOL	ISOL	ISOL
26	VIDARBHA	FWS	FWS	FWS	SCT	ISOL	ISOL	SCT
27	CHHATTISGARH	FWS	FWS	FWS	SCT	SCT	SCT	FWS
28	COASTAL ANDHRA PRADESH	ISOL	ISOL	ISOL	ISOL	ISOL	ISOL	ISOL
29	TELANGANA	SCT	SCT	ISOL	ISOL	ISOL	ISOL	ISOL
30	RAYALASEEMA	ISOL	ISOL	ISOL	ISOL	ISOL	ISOL	ISOL
31	TAMILNADU & PUDUCHERRY	ISOL	ISOL	ISOL	ISOL	ISOL	ISOL	ISOL
32	COSTAL KARNATAKA	WS	WS	WS	WS	WS	WS	WS
33	NORTH INTERIOR KARNATAKA	SCT	SCT	SCT	ISOL	ISOL	ISOL	ISOL
34	SOUTH INTERIOR KARNATAKA	SCT	ISOL	ISOL	ISOL	ISOL	ISOL	ISOL
35	KERALA AND MAHE	WS	FWS	FWS	WS	WS	WS	WS
36	LAKSHADWEEP	WS	FWS	FWS	WS	WS	WS	WS

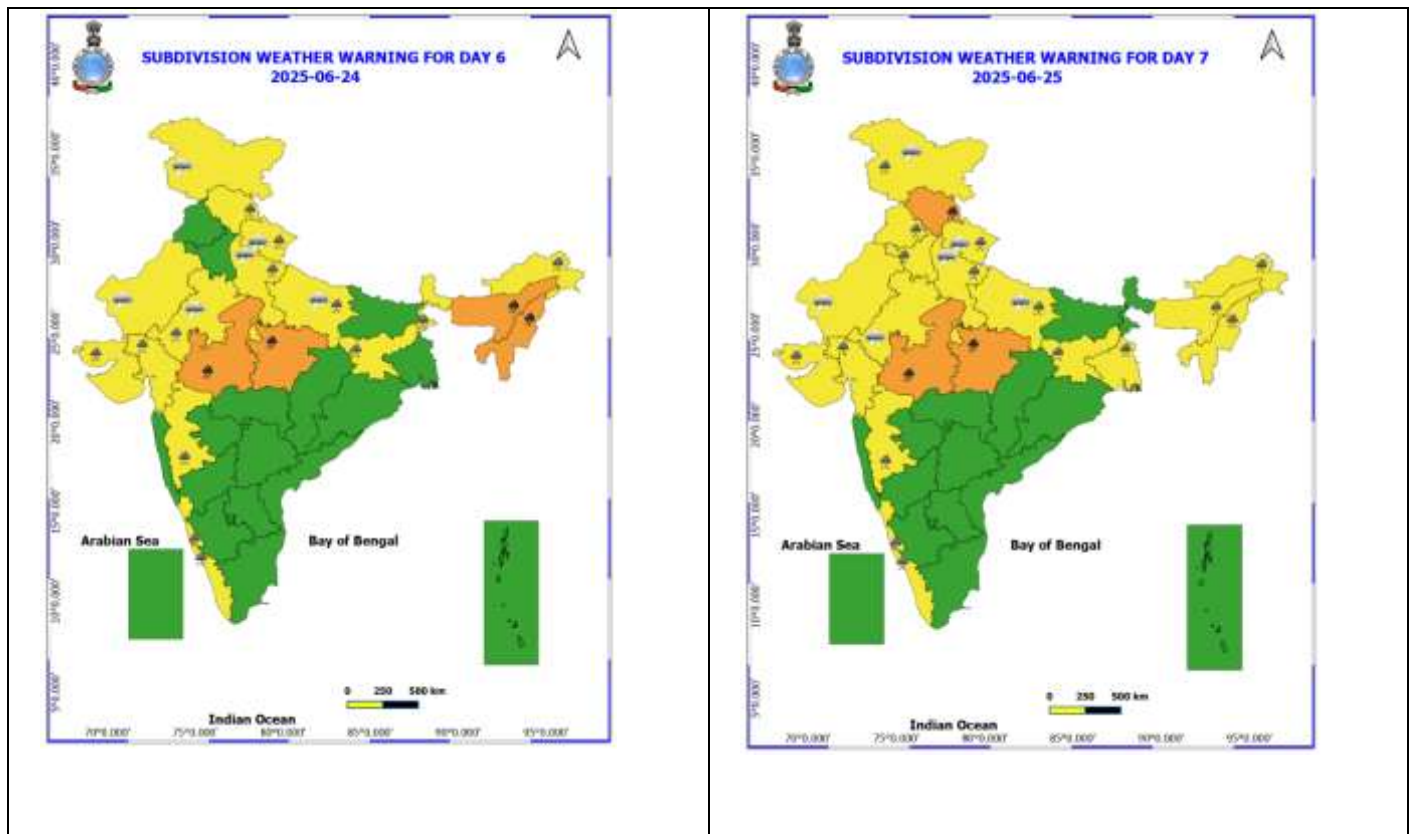
- As the lead period increases forecast accuracy decreases.

## ANNEXURE V









- Action may be taken based on ORANGE AND REDCOLOUR warnings.
- Vulnerable regions likely urban and hilly areas action may be initiated for heavy rainfall warning.
- As the lead period increases forecast accuracy decreases.

Detailed districtwise Multi Hazard weather warning for next five days available at  
<https://mausam.imd.gov.in/responsive/districtWiseWarningGIS.php>

## Annexure VI

### Weather forecast over Delhi/NCR during 19<sup>th</sup> to 22<sup>th</sup> June 2025

#### Past Weather:

There has been a rise in the minimum temperature up to 2 - 3°C and fall in the maximum temperature up to 2 - 3°C over Delhi/NCR during the past 24 hours. The maximum and minimum temperatures over Delhi were around 33 to 34°C and 24 to 27° respectively. The minimum temperature was below normal up to 1 - 2°C and the maximum temperature was below normal up to 5 - 6°C. Generally cloudy sky conditions with predominant surface wind from the east/southeast direction with wind speeds up to 12 kmph prevailed during the past 24 hours. Partly cloudy sky conditions with wind speed less than 15 kmph from the southeast direction prevailed over the region in the forenoon today.

#### Weather Forecast:

**19.06.2025:** Generally cloudy sky. Very light to light rain/thunderstorm/lighting with gusty winds 30 - 40 kmph temporary reaching 50 kmph during thunderstorm towards evening/night. The maximum temperatures over Delhi are likely to be in the range of 34 to 36°C. The maximum temperature will be below normal up to 2 - 4°C. The predominant surface wind will likely be from the southeast direction with a wind speed of less than 15 kmph in the afternoon. The wind speed will gradually decrease becoming 10-12 kmph from the southeast direction during evening and night.

**20.06.2025:** Generally cloudy sky. Very light to light rain/thunderstorm/lighting accompanied with gusty winds 30 - 40 kmph temporary reaching 50 kmph during thunderstorm towards afternoon/evening. The maximum and minimum temperatures over Delhi are likely to be in the range of 36 to 38°C and 27 to 29°C respectively. The minimum temperature will be near normal and the maximum temperature will be below normal up to 1 - 2°C. The predominant surface wind will likely be from the southeast direction with a wind speed of less than 25 kmph during the morning hours. The wind speed will gradually decrease becoming 15-20 kmph from the southeast

direction in the afternoon. It will decrease becoming less than 15 kmph from the northeast direction during evening and night.

**21.06.2025:** Generally cloudy sky. Light to moderate rain/thunderstorm/lighting accompanied with gusty winds 30 - 40 kmph temporary reaching 50 kmph during thunderstorm. The maximum and minimum temperatures over Delhi are likely to be in the range of 35 to 37°C and 26 to 28°C respectively. The minimum temperature will be below normal up to 1 - 2°C and the maximum temperature will be below normal up to 1 - 3°C. The predominant surface wind will likely be from the southwest direction with a wind speed of less than 20 kmph during the morning hours. The wind speed will gradually decrease becoming less than 15 kmph from the southwest direction in the afternoon. It will increase to less than 18 kmph from the southeast direction during the evening and night.

**22.06.2025:** Generally cloudy sky. Light to moderate rain/thunderstorm/lighting accompanied with gusty winds 30 - 40 kmph temporary reaching 50 kmph during thunderstorm. The maximum and minimum temperatures over Delhi are likely to be in the range of 34 to 36°C and 26 to 28°C respectively. The minimum temperature will be below normal up to 1 - 2°C and the maximum temperature will be below normal up to 2 - 4°C. The predominant surface wind will likely be from the south direction with a wind speed of less than 12 kmph during the morning hours. The wind speed will gradually increase becoming less than 16 kmph from the northwest direction in the afternoon. It will increase to less than 20 kmph from the southeast direction during the evening and night.

**Impact expected and Action Suggested due to thunderstorm with lightning/gusty winds:**

- Be cautious and take precautionary measures, though there is the likelihood of thunderstorm/lighting and gusty winds (speed 40 – 50 kmph) temporarily reaching to 60 kmph during thunderstorm with dust rising surface winds.
- Breaking of tree branches, uprooting of large avenue trees, Large dead limbs blown from trees, Damage to standing crops, Minor to major damage to power and communication lines due to breaking of branches, Partial damage to vulnerable structures due to strong winds, Loose objects may fly.
- People are advised to keep a watch on the weather for worsening conditions and be ready to move to safer places accordingly, stay indoors, close windows & doors and avoid travel if possible, take safe shelters; do not take shelter under trees, do not lie on concrete floors and do not lean against concrete walls, unplug electrical/ electronic appliances, immediately get out of water bodies, keep away from all the objects that conduct electricity.

**Impact & Action Suggested due to extremely heavy falls/ very heavy rainfall:**

- ✓ **Extremely heavy rainfall (>20 cm/24 hours) likely at isolated places over Konkan, ghat areas of Madhya Maharashtra, Gujarat Region, Jharkhand on 19th June.**
- ✓ **Heavy to very heavy rainfall** likely to continue over Northeast India during 19th-25th; Bihar, West Bengal, Odisha, West Uttar Pradesh on 19th, Jharkhand, Madhya Maharashtra on 20th, East Madhya Pradesh on 21st; Madhya Pradesh on 24th & 25th and over Chhattisgarh on 19th & 20th,, Gujarat region on 22nd & 23rd East Uttar Pradesh on 20th & 21st; East Rajasthan on 19th & 23rd, Uttarakhand on 22nd, Himachal Pradesh on 22nd & 25th June.

**Impact Expected**

- Localized Flooding of roads, water logging in low lying areas and closure of underpasses mainly in urban areas of the above region.
- Occasional reduction in visibility due to heavy rainfall.
- Disruption of traffic in major cities due to water logging in roads leading to increased travel time.
- Minor damage to kutchha roads.
- Possibilities of damage to vulnerable structure.
- Localized Landslides/Mudslides/landslips/mudslips/landsinks/mudsinks.
- Damage to horticulture and standing crops in some areas due to inundation.
- It may lead to riverine flooding in some river catchments (for riverine flooding please visit Web page of CWC)

### Action Suggested

- Check for traffic congestion on your route before leaving for your destination.
- Follow any traffic advisories that are issued in this regard.
- Avoid going to areas that face the water logging problems often.
- Avoid staying in vulnerable structure.

### Agromet advisories for likely impact of Heavy / Heavy to Very Heavy / Extremely Heavy Rainfall (Based on the IBF and advisories issued by different AMFUs)

- In **Gangetic West Bengal**, postpone nursery sowing of *kharif* rice. Ensure proper drainage in already sown rice nurseries, fields of sesame, jute and groundnut to prevent waterlogging. Cover the young seedlings of *kharif* rice with plastic sheets or agro-shade nets to protect them from heavy rains. Keep the harvested produce of *Boro* rice at safer place to protect harvested grains from heavy rains.
- In **Sub-Himalayan West Bengal**, maintain proper drainage channels in rice nurseries and fields of jute and ginger to avoid water stagnation.
- In **North Odisha**, postpone nursery sowing of rice and sowing of millets, maize, pulses and vegetables. Ensure proper drainage from already sown rice nurseries, fields of maize and vegetables to prevent waterlogging. Cover rice and vegetable nurseries with plastic sheets to prevent washing away of seeds.
- In **Jharkhand**, postpone sowing of rice nursery, maize and green gram. Make necessary arrangements to drain out excess water from already sown maize fields, rice and vegetable nurseries. Postpone harvesting of summer maize and keep the already harvested produce in safe place.
- In **South Gujarat**, postpone nursery sowing of rice. Ensure proper drainage facilities in already sown rice nurseries, sugarcane fields, banana and mango plantations to prevent waterlogging. Provide support to sugarcane and banana to prevent lodging.
- In **Saurashtra**, ensure proper drainage in vegetable fields. Keep the harvested summer crop / fodder in safe place.
- In **Rajasthan**, store the harvested green gram and vegetables in safe place.
- In **Konkan & Goa** and **ghat areas of Madhya Maharashtra**, make arrangement to drain out excess water from rice nurseries to prevent water logging.
- In **North Chhattisgarh**, postpone nursery sowing of rice and ensure proper drainage in already sown rice nurseries.
- In **Bhabar and Tarai Zone of Uttarakhand**, ensure proper drainage in already sown crops of pigeon pea, millets and soybean.
- In **Assam**, keep the harvested produce of sesame, foxtail millet, *Boro* rice, banana and citrus at safer places. Ensure proper drainage in *Sali* rice nursery, maize and sugarcane fields, arecanut and coconut plantations to prevent water logging.
- In **Meghalaya**, postpone nursery sowing of rice especially in valleys. Ensure proper drainage in the fields of maize, ginger, French bean, cowpea, vegetables and around rice nurseries to prevent water logging. Provide strong bamboo stakes or trellis support to cow pea, cucumber and bottle gourd to prevent vines from trailing on wet ground. Provide support to banana plant to prevent lodging.
- In **Arunachal Pradesh**, keep the harvested produce of soybean and vegetables such as chilli and okra at a safer place. Ensure proper drainage in rice nurseries, kiwi and apple orchards to avoid water logging.
- In **Tripura**, use sandbags to protect seedbeds of *Aus* paddy from waterlogging. Provide support to banana, papaya and young fruit plants to prevent lodging.

### Livestock / Fishery

- Keep the animals inside the shed during heavy rainfall and provide them balanced feed.
- Store feed and fodder in a safe place to prevent spoilage.
- Construct an outlet with proper netting around the ponds to drain out excess water, thereby preventing fish from escaping in case of overflow.

### Agromet advisories for likely impact of Thunderstorm / Gusty Winds / Squally Winds (Based on the IBF and advisories issued by different AMFUs)



- Provide mechanical support to horticultural crops and staking or support to vegetables and young fruit plants / fruit-bearing plants to avoid lodging due to strong winds.

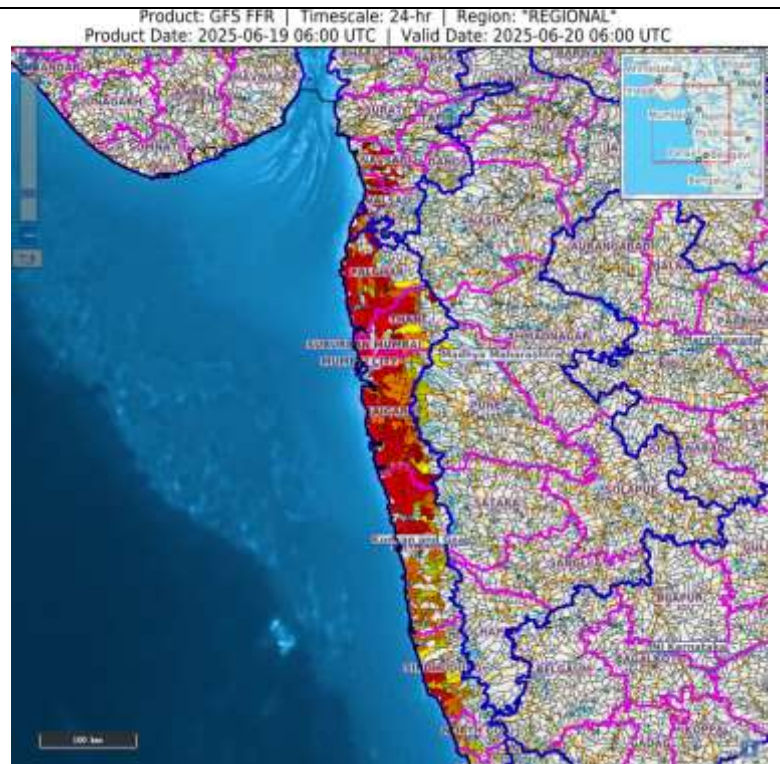
#### **Flash Flood Guidance:**

**24 hours Outlook for the Flash Flood Risk (FFR) till 1130 IST of 20-06-2025 :**

Low to Moderate flash flood risk likely over few watersheds & neighbourhoods of following Met Sub-divisions during next 24 hours.

Gujarat Region - Bharuch, Navsari, Surat, Tapi and Valsad districts. Konkan & Goa - Mumbai City, Palghar, Raigarh, Ratnagiri, Sindhudurg, Suburban Mumbai and Thane districts.

Surface runoff/ Inundation may occur at some fully saturated soils & low-lying areas over Area of Concern (AoC) as shown in map due to expected rainfall occurrence in next 24 hours.



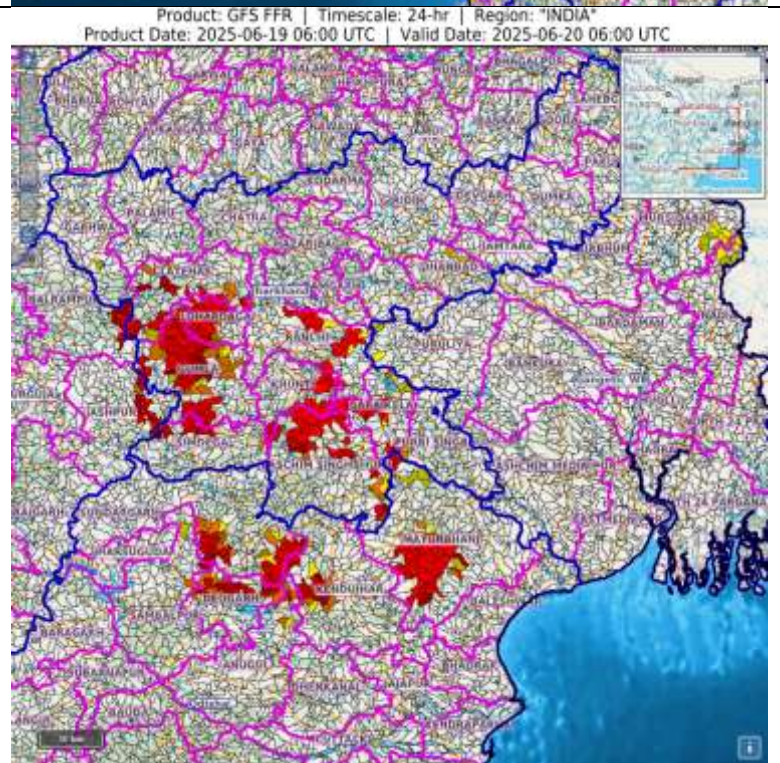
**24 hours Outlook for the Flash Flood Risk (FFR) till 1130 IST of 20-06-2025 :**

Moderate to High flash flood risk likely over few watersheds & neighbourhoods of following Met Sub-divisions during next 24 hours.

Odisha - Deogarh, Kendujhar, Mayurbhanj, and Sundargarh districts.

Jharkhand - Bokaro, Hazaribagh, Khunti, Ramgarh, Latehar, Lohardaga, Gumla, Ranchi, Saraikela, Simdega and West Singhbhum districts.

Surface runoff/ Inundation may occur at some fully saturated soils & low-lying areas over Area of Concern (AoC) as shown in map due to expected rainfall occurrence in next 24 hours.



## Legends & abbreviations:

- ❖ **Heavy Rain:**64.5-115.5mm; **Very Heavy Rain:**115.6-204.4mm; **Extremely Heavy Rain:** >204.4mm.
- ❖ **Obsy:** Observatory; Automatic Weather Station; **ARG:** Automatic Rain Gauge; **dist:** District; **NH:** National Highway; **KVK:** Krishi Vigyan Kendra; **DVC:** Damodar Valley Corporation; **PTO:** Part Time Office, **Aero:** Aerodrome, **IAF:** Indian Air Force.
- ❖ **Region wise classification of meteorological Sub-Divisions:**
  - **Northwest India:** Western Himalayan Region (Jammu-Kashmir-Ladakh-Gilgit-Baltistan-Muzaffarabad, Himachal Pradesh and Uttarakhand); Punjab, Haryana-Chandigarh-Delhi; West Uttar Pradesh, East Uttar Pradesh, West Rajasthan and East Rajasthan.
  - **Central India:** West Madhya Pradesh, East Madhya Pradesh, Vidarbha and Chhattisgarh.
  - **East India:** Bihar, Jharkhand, Sub-Himalayan West Bengal & Sikkim; Gangetic West Bengal, Odisha and Andaman & Nicobar Islands.
  - **Northeast India:** Arunachal Pradesh, Assam & Meghalaya and Nagaland, Manipur, Mizoram & Tripura.
  - **West India:** Gujarat Region, Saurashtra & Kutch, Konkan & Goa, Madhya Maharashtra and Marathawada.
  - **South India:** Coastal Andhra Pradesh & Yanam, Telangana, Rayalaseema, Coastal Karnataka, North Interior Karnataka, South Interior Karnataka, Kerala & Mahe, Tamil Nadu, Puducherry & Karaikal and Lakshadweep.



## LEGENDS

1. अंडमान और निकोबार द्वीपसमूह

2. अरुणाचल प्रदेश

3. असम और मेघालय

4. नागालैंड, मणिपुर, मिजोरम और त्रिपुरा

5. उप-हिमालयी पश्चिम बंगाल और सिक्किम

6. गंगीय पश्चिम बंगाल

7. ओडिशा

8. झारखंड

9. बिहार

10. पूर्वी उत्तर प्रदेश

11. पश्चिम उत्तर प्रदेश

12. उत्तराखंड

13. हरियाणा, चंडीगढ़ और दिल्ली

14. पंजाब

15. हिमाचल प्रदेश

16. जम्मू और कश्मीर और लद्दाख

17. पश्चिम राजस्थान

18. पूर्वी राजस्थान

19. पश्चिम मध्य प्रदेश

20. पूर्वी मध्य प्रदेश

21. गुजरात

22. सौराष्ट्र

23. कोंकण और गोवा

24. मध्य महाराष्ट्र

25. मराठवाड़ा

26. विदर्भ

27. छत्तीसगढ़

28. तटीय आंध्र प्रदेश और यनम

29. तेलंगाना

30. रायलसीमा

31. तमिलनाडु, पुडुचेरी और कराईकल

32. तटीय कर्नाटक

33. आंतरिक उत्तरी कर्नाटक

34. आंतरिक दक्षिणी कर्नाटक

35. केरल और माहे

36. लक्षद्वीप



1. Andaman & Nicobar Islands

2. Arunachal Pradesh

3. Assam & Meghalaya

4. Nagaland, Manipur, Mizoram & Tripura

5. Sub-Himalayan West Bengal & Sikkim

6. Gangetic West Bengal

7. Odisha

8. Jharkhand

9. Bihar

10. East Uttar Pradesh

11. West Uttar Pradesh

12. Uttarakhand

13. Haryana, Chandigarh & Delhi

14. Punjab

15. Himachal Pradesh

16. Jammu & Kashmir and Ladakh

17. West Rajasthan

18. East Rajasthan

19. West Madhya Pradesh

20. East Madhya Pradesh

21. Gujarat

22. Saurashtra

23. Konkan & Goa

24. Madhya Maharashtra

25. Marathwada

26. Vidarbha

27. Chhattisgarh

28. Coastal Andhra Pradesh & Yanam

29. Telangana

30. Rayalaseema

31. Tamilnadu, Puducherry & Karaikal

32. Coastal Karnataka

33. North Interior Karnataka

34. South Interior Karnataka

35. Kerala & Mahe

36. Lakshadweep

## SPATIAL DISTRIBUTION (% of Stations reporting)

% Stations	Category	% Stations	Category
76-100	Widespread (WS/Most Places)	26-50	Scattered (SCT/A Few Places)
51-75	Fairly Widespread (FWS/Many Places)	1-25	Isolated (ISOL)



Fog



Heavy Snow



Cold Wave



Heavy Rain



Dust Storm



Cold Day



Very Heavy Rain



Heat Wave



Ground Frost



Extremely Heavy Rain



Warm Night



Thunder & Lightning



Hot Day



Hailstorm



Hot & Humid



Dust Raising Winds



Strong Surface Winds

### COLOUR CODED WARNING

No Warning (No Action)

Watch (Be Aware)

Alert (Be Prepared To Take Action)

Warning (Take Action)

### Probabilistic Forecast

Terms	Probability of Occurrence (%)
Unlikely	< 25
Likely	25 - 50
Very Likely	50 - 75
Most Likely	> 75

\* Red colour warning does not mean "Red Alert", Red colour warning means "Take Action".

Forecast and Warning for any day is valid from 0830 hours IST of day till 0830 hours IST of next day.

For more details, kindly visit <https://mausam.imd.gov.in> or contact: 011-2434-4599

(Service to the Nation since 1875)



### DEFINITION/CRITERIA

#### Rain/ Snow \*

Heavy: 64.5 to 115.5 mm/cm \*  
Very Heavy: 115.6 to 204.4 mm/cm \*  
Extremely Heavy: > 204.4 mm/cm \*

#### Heat Wave

When maximum temperature of a station reaches  $\geq 40^{\circ}\text{C}$  for plains and  $\geq 30^{\circ}\text{C}$  for hilly regions

(a) Based on Departure from normal

Heat Wave: Maximum Temperature Departure from normal  $4.5^{\circ}\text{C}$  to  $6.4^{\circ}\text{C}$ .

Severe Heat Wave: Maximum Temperature Departure from normal  $\geq 6.5^{\circ}\text{C}$

(b). Based on Actual maximum temperature

Heat Wave: When actual maximum temperature  $\geq 45^{\circ}\text{C}$ .

Severe Heat Wave: When actual maximum temperature  $\geq 47^{\circ}\text{C}$ .

(c). Criteria for heat wave for coastal stations

When maximum temperature departure is  $> 4.5^{\circ}\text{C}$  from normal. Heat Wave may be described provided maximum temperature  $\geq 37^{\circ}\text{C}$ .

#### Warm Night

When maximum temperature remains  $40^{\circ}\text{C}$

Warm Night: When minimum temperature departure  $4.5^{\circ}\text{C}$  to  $6.4^{\circ}\text{C}$ .

Severe Warm Night: When minimum temperature departure  $> 6.4^{\circ}\text{C}$ .

#### Cold Wave

When minimum temperature of a station  $\leq 10^{\circ}\text{C}$  for plains and  $\leq 0^{\circ}\text{C}$  for hilly regions.

(a). Based on departure

Cold Wave: Minimum Temperature Departure from normal  $-4.5^{\circ}\text{C}$  to  $-6.4^{\circ}\text{C}$ .

Severe Cold Wave: Minimum Temperature Departure from normal  $\leq -6.5^{\circ}\text{C}$

(b) Based on actual Minimum Temperature (for Plains only)

Cold Wave: When Minimum Temperature is  $\leq 4.0^{\circ}\text{C}$

Severe Cold Wave: When Minimum Temperature is  $\leq 2.0^{\circ}\text{C}$

(c) For Coastal Stations

When Minimum Temperature departure is  $\leq -4.5^{\circ}\text{C}$  & actual Minimum Temperature is  $\leq 15^{\circ}\text{C}$

#### Cold Day

When minimum temperature of a station  $\leq 10^{\circ}\text{C}$  for plains and  $\leq 0^{\circ}\text{C}$  for hilly regions

Based on departure

Cold Day: Maximum Temperature Departure from normal  $-4.5^{\circ}\text{C}$  to  $-6.4^{\circ}\text{C}$ .

Severe Cold Day: Maximum Temperature Departure from normal  $\leq -6.5^{\circ}\text{C}$

#### Fog

Phenomenon of small droplets suspended in air and the horizontal visibility  $< 1\text{km}$

Moderate Fog: When the visibility between 500-200 metres

Dense Fog: when the visibility between 50- 200 metres

Very Dense Fog: when the visibility  $< 50$  metres

#### Thunderstorm

Sudden electrical discharges manifested by a flash of light (Lightning) and a sharp rumbling sound (thunder)

#### Dust/Sand Storm

An ensemble of particles of dust or sand energetically lifted to great heights by a strong and turbulent wind.

#### Frost

Ice deposits on ground

Air temperature  $\leq 4^{\circ}\text{C}$  ( over Plains)

#### Squall

A strong wind that rises suddenly, lasts for atleast 1 minute.

Moderate: Wind speed 52-61 kmph

Severe: Wind speed 62-67 kmph

Very Severe: Wind speed  $> 67$  kmph

#### Sea State

Effect of various waves in the sea over specific area

Rough to very rough: Wind speed 41-62 kmph (22-33 knots) & Wave height 2.5-6 metre

High to very high: Wind speed 63-117 kmph ( 34-63 knots) & Wave height 6-14 metre

Phenomenal: Wind speed  $> 117$  kmph ( $> 63$  knots) & Wave height  $> 14$  metre

#### Cyclone

Cyclonic Storm: Wind speed 62-87 kmph (34-47 knots)

Severe Cyclonic Storm: Wind speed 88-117 kmph (48-63 knots)

Very Severe Cyclonic Storm: Wind speed 118-165 kmph (64 - 89 knots)

Extremely Severe Cyclonic Storm: Wind speed 166-220 kmph (90 -119 knots)

Super Cyclone Storm: Wind speed  $> 220$  kmph ( $> 119$  knots)

\* Red colour warning does not mean "Red Alert", Red colour warning means "Take Action".

Forecast and Warning for any day is valid from 0830 hours IST of day till 0830 hours IST of next day.

For more details, kindly visit <https://mausam.imd.gov.in> or contact: 011-2434-4599

(Service to the Nation since 1875)

**Hot and Humid:** When maximum temperatures remain  $3^{\circ}\text{C}$  above normal along with the above normal relative humidity.