



**Government of India  
Ministry of Earth Sciences  
India Meteorological Department**



**Press Release**

**Date: 23<sup>rd</sup> June, 2025**

**Time of Issue: 1330 hours IST**

**Subject: i) Increase in rainfall activity with isolated heavy to very heavy falls over northwest India from 25<sup>th</sup> June onwards.**

**ii) Heavy to very heavy rainfall activity likely to continue over many parts of central, east & northeast India during next 7 days with isolated extremely heavy rainfall over West Madhya Pradesh on 23<sup>rd</sup> & 24<sup>th</sup> June.**

**Southwest Monsoon (Annexure I):**

- ❖ The Northern Limit of Monsoon continues to pass through 25.0°N/60.0°E, 25.0°N/65.0°E, 25.5°N/70.0°E, Jaipur, Agra, Rampur, Dehradun, Shimla, Pathankot, Jammu, and 33.5°N/73.0°E and 34.0°N/71.0°E.
- ❖ Conditions are favourable for further advance of Southwest monsoon over remaining parts of North Arabian Sea, some more parts of Rajasthan, Punjab, some parts of Haryana, Chandigarh and Delhi, remaining parts of West Uttar Pradesh, Himachal Pradesh and remaining parts of Jammu during next 2 days.

**Realised weather during past 24 hours till 0830 hours IST of today, the 23<sup>rd</sup> June, 2025 (Annexure II):**

- ❖ **Heavy to very heavy rainfall at some places with extremely heavy falls** recorded at isolated places over West Madhya Pradesh.
- ❖ **Heavy to very heavy rainfall** recorded at isolated places over Gujarat state, Konkan, West Uttar Pradesh, Bihar, Arunachal Pradesh, Odisha; **Heavy rainfall** at isolated places over Himachal Pradesh, Uttarakhand, East Uttar Pradesh, East Rajasthan, Kerala, Madhya Maharashtra, Coastal & South Interior Karnataka, Tamil Nadu, Sub-Himalayan West Bengal & Sikkim, Jharkhand, East Madhya Pradesh, Assam & Meghalaya, Manipur.
- ❖ **Thunderstorm accompanied with Squally/Gusty winds with speed 60-80 kmph** at isolated places over Himachal Pradesh; **40-60 kmph** at isolated places over Madhya Maharashtra, Saurashtra & Kutch, Andaman & Nicobar Islands, West Uttar Pradesh, Punjab, Kokan, Marathwada.

**For more details of realised weather, kindly refer [Annexure II](#),**

**i. Weather Systems, Forecast and Warnings (refer to Annexure III & IV):**

- ❖ An upper air cyclonic circulation lies over central parts of south Uttar Pradesh extending upto middle tropospheric levels tilting southwards with height.
- ❖ A trough runs from above cyclonic circulation over central parts of south Uttar Pradesh to northwest Bay of Bengal across northeast Madhya Pradesh, Jharkhand & north Odisha in lower tropospheric levels.
- ❖ A trough runs roughly along Long. 87°E to the north of Lat. 21°N in lower tropospheric levels.
- ❖ An upper air cyclonic circulation lies over Saurashtra & Kutch in lower tropospheric levels.
- ❖ An upper air cyclonic circulation over northeast Assam & neighbourhood in lower tropospheric levels.
- ❖ An upper air cyclonic circulation lies over westcentral and adjoining northwest Bay of Bengal off north Coastal Andhra Pradesh & south Odisha coast in middle tropospheric levels tilting southwards with height.
- ❖ Under the influence of these systems, the following weather is likely:

**East & Central India:**

- ✓ **Extremely heavy rainfall (>20 cm/24 hours) likely at isolated places over West Madhya Pradesh on 23<sup>rd</sup> & 24<sup>th</sup> June.**
- ✓ Isolated **heavy to very heavy rainfall** also likely to continue over Madhya Pradesh during 23<sup>rd</sup> -27<sup>th</sup> June.
- ✓ Isolated **heavy rainfall** over Bihar, Jharkhand, Odisha, Chhattisgarh during 23<sup>rd</sup>-27<sup>th</sup>, Vidarbha on 25<sup>th</sup> & 26<sup>th</sup>, West Bengal & Sikkim during 24<sup>th</sup>-27<sup>th</sup>, with **very heavy rainfall** over Bihar on 23<sup>rd</sup> & 24<sup>th</sup>; Vidarbha on 24<sup>th</sup>; Jharkhand on 26<sup>th</sup>, Odisha on 25<sup>th</sup> & 26<sup>th</sup> June.

- ✓ Light/moderate rainfall at most/many places accompanied with **thunderstorm, lightning & gusty winds speed reaching 40-50 kmph** likely over Andaman & Nicobar Islands; Madhya Pradesh, Vidarbha, Chhattisgarh, Gangetic West Bengal, Bihar, Jharkhand, Odisha during 23<sup>rd</sup>-27<sup>th</sup> June.

#### West India:

- ✓ Isolated **heavy rainfall** likely over Konkan & Goa, Madhya Maharashtra, Gujarat state during 23<sup>rd</sup>-29<sup>th</sup> June with **very heavy rainfall** over Konkan on 23<sup>rd</sup> & 24<sup>th</sup>; Gujarat state on 23<sup>rd</sup> June.
- ✓ Light/moderate rainfall at most/many places likely over Gujarat State, Konkan & Goa, Madhya Maharashtra, Marathawada during 23<sup>rd</sup>-29<sup>th</sup> June.

#### Northwest India:

- ✓ Isolated **heavy rainfall** likely over Jammu-Kashmir-Ladakh-Gilgit-Baltistan-Muzaffarabad, Punjab, Haryana during 25<sup>th</sup>-27<sup>th</sup>; Himachal Pradesh, Uttarakhand, West Uttar Pradesh, East Rajasthan during 23<sup>rd</sup>-29<sup>th</sup>; West Rajasthan on 24<sup>th</sup> & 25<sup>th</sup>; East Uttar Pradesh on 23<sup>rd</sup>, 24<sup>th</sup>, 28<sup>th</sup> & 29<sup>th</sup> with **very heavy rainfall** over Himachal Pradesh, Uttarakhand during 23<sup>rd</sup>-27<sup>th</sup>, East Rajasthan on 23<sup>rd</sup> & 24<sup>th</sup>; Haryana, Punjab, West Uttar Pradesh on 25<sup>th</sup> & 26<sup>th</sup>, Jammu-Kashmir-Ladakh-Gilgit-Baltistan-Muzaffarabad on 25<sup>th</sup> June.
- ✓ Light/moderate rainfall at most/many places accompanied with **thunderstorm, lightning & gusty winds speed reaching 30-40 kmph** likely over Northwest India during 23<sup>rd</sup>-29<sup>th</sup> June.

#### Northeast India:

- ✓ Isolated **very heavy rainfall** likely over Assam & Meghalaya, Nagaland on 23<sup>rd</sup>, Arunachal Pradesh on 23<sup>rd</sup> & 24<sup>th</sup> June.
- ✓ Light/moderate rainfall at many/most places accompanied with **thunderstorm, lightning and isolated heavy rainfall** likely to continue over Northeast India during next 7 days.

#### South Peninsular India:

- ✓ Isolated **heavy rainfall** likely over Kerala, Karnataka during 23<sup>rd</sup>-27<sup>th</sup>; Coastal Andhra Pradesh & Yanam on 23<sup>rd</sup>, 27<sup>th</sup> & 28<sup>th</sup> June.
- ✓ **Strong surface winds** (speed reaching 40-60 kmph) very likely over Karnataka, Coastal Andhra Pradesh & Yanam, Rayalaseema, Telangana, Kerala & Mahe, Lakshadweep during 23<sup>rd</sup>-27<sup>th</sup> June.
- ✓ Light/moderate rainfall at many/some places over Kerala & Mahe, Lakshadweep, Coastal Karnataka; isolated to scattered rainfall accompanied with isolated **thunderstorm, lightning** over Coastal Andhra Pradesh & Yanam, Telangana, Interior Karnataka during 23<sup>rd</sup>-27<sup>th</sup> June.

#### Fishermen Warnings:

- ❖ Fishermen are advised to avoid venturing into the following from 22<sup>nd</sup> to 26<sup>th</sup> June 2025:

##### Arabian Sea:

- ❖ Fishermen are advised not to venture over Along and off Gujarat coast for day 1 & day 2 (23<sup>rd</sup> & 24<sup>th</sup> June); off Gujarat coast for day 3, day 4 & day 5 (25<sup>th</sup>, 26<sup>th</sup> & 27<sup>th</sup> June); Konkan coast for day 1 (23<sup>rd</sup> June), off Konkan coast for day 2 to day 5 (24<sup>th</sup> to 28<sup>th</sup> June); Fishermen are advised not to venture along and off the Somalia coast and adjoining sea areas, Oman and adjoining Yemen coast & adjoining sea areas; Over central & adjoining north, south Arabian Sea for day 1 to day 5 (23<sup>rd</sup> – 28<sup>th</sup> June); many parts of northeast Arabian Sea for day 1 (23<sup>rd</sup> June).

##### Bay of Bengal:

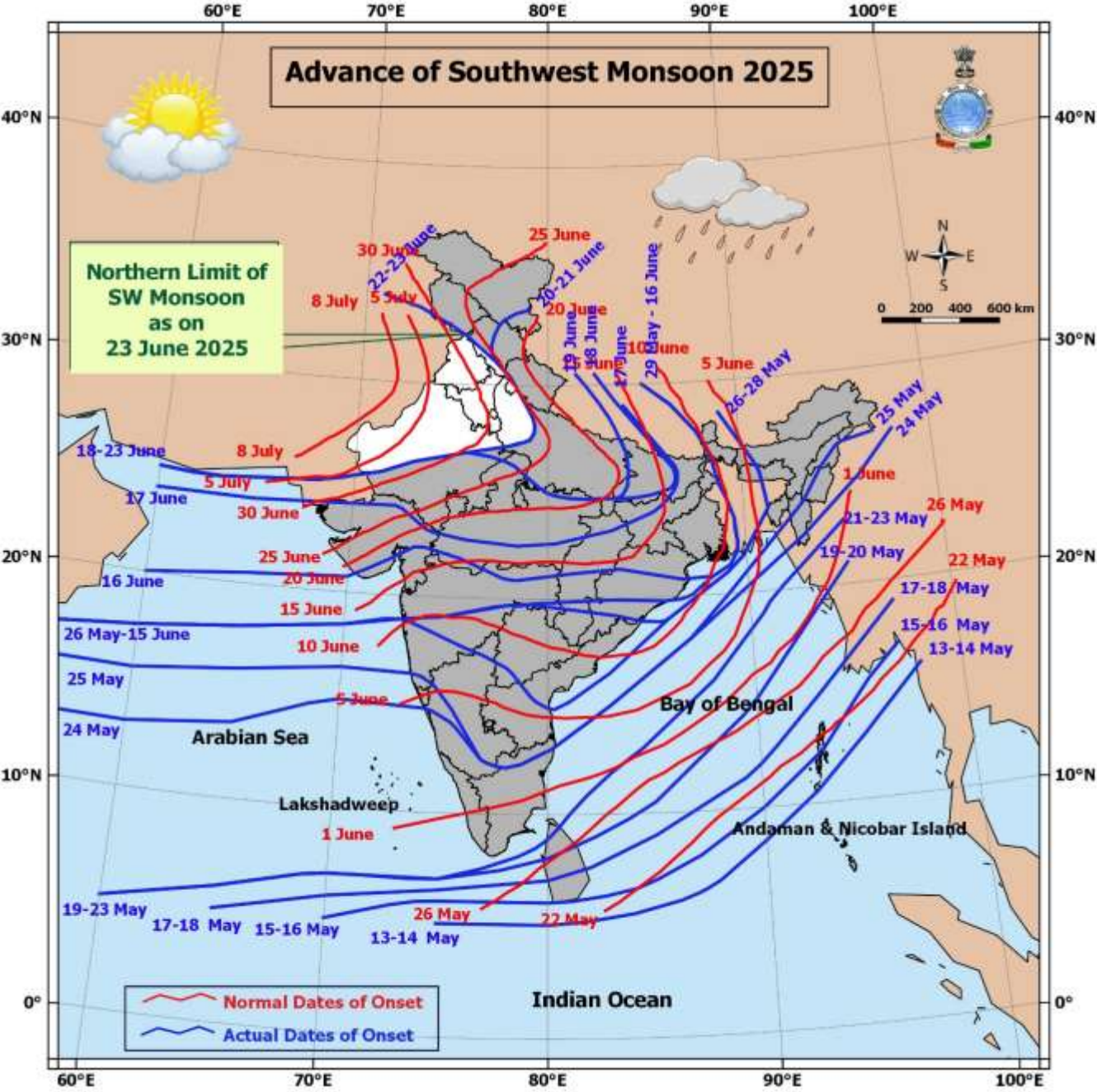
- ❖ Fishermen are advised not to venture along and off north Andhra Pradesh coast for day 1 (23<sup>rd</sup> June), off Andhra Pradesh coast for day 2 (24<sup>th</sup> June); along and off Odisha and West Bengal coasts for day 3 & day 4 (25<sup>th</sup> & 26<sup>th</sup> June); Over most parts of central Bay of Bengal and Andaman Sea for day 1 to day 2 (23<sup>rd</sup> & 24<sup>th</sup> June); over many parts of westcentral Bay of Bengal for day 3 to day 5 (25<sup>th</sup> to 28<sup>th</sup> June); over many parts of southwest Bay of Bengal for day 1 to day 3 (23<sup>rd</sup> to 26<sup>th</sup> June).
- ❖ Total suspension of fishing operations is suggested over above mentioned areas and dates.

#### ii. Weather conditions and forecast over Delhi/NCR during 23<sup>rd</sup> June to 26<sup>th</sup> June, 2025 (Annexure V)

For more details, kindly refer National Weather Bulletin:

[https://mausam.imd.gov.in/responsive/all\\_india\\_forecast\\_bulletin.php](https://mausam.imd.gov.in/responsive/all_india_forecast_bulletin.php)

For District wise warnings refer: <https://mausam.imd.gov.in/responsive/districtWiseWarningGIS.php>



**Significant weather reported during past 24 hours till 0830 hours IST of today:****Rainfall recorded (in cm) reported during past 24 hours till 0830 hours IST of today, the 23<sup>rd</sup> June:**

- ❖ **West Madhya Pradesh:** Mungaoli (dist Ashoknagar) 26; Bamori (dist Guna) 25; Badarwas (dist Shivpuri) 15; Chanderi (dist Ashoknagar), Guna-aws (dist Guna) 14 Each; Sabalgarh (dist Morena) 12; Raghogarh (dist Guna) 10; Jaora (dist Ratlam) 8; Kailaras (dist Morena), Kolar (dist Bhopal) 7 Each;
- ❖ **Saurashtra & Kutch:** Jodia (dist Jamnagar) 18; Mendarda (dist Junagadh) 15; Vanthali (dist Junagadh) 13; Kalavad (dist Jamnagar) 12; Junagarh AWS (dist Junagadh), Keshod (dist Junagadh), Junagadh (dist Junagadh) 11 Each; Manavadar (dist Junagadh) 10;
- ❖ **West Uttar Pradesh:** Mahroni (dist Lalitpur) 16; Lalitpur (dist Lalitpur) 10; Gunnaur (dist Sambhal) 8; Madawara (dist Lalitpur) 7;
- ❖ **Konkan & Goa:** Talasari (dist Palghar) 14; Dahanu (dist Palghar) 13; Jawhar (dist Palghar) 11; Mokheda - Fmo (dist Palghar) 9; Ponda (dist North Goa), Valpoi (dist North Goa) 8 Each; Sanguem (dist South Goa) 7;
- ❖ **Gujarat Region:** Palsana (dist Surat) 14; Kaprada (dist Valsad) 12; Amirgadh (dist Banaskantha), Umerpada (dist Surat) 11 Each; Kamrej (dist Surat) 10; Pardi (dist Valsad), Madhbun (dist Dadara & Nagar Haveli) 9 Each; Vapi (dist Valsad), Daman (dist Daman), Khergam (dist Navsari) 8 Each;
- ❖ **Nagaland, Manipur, Mizoram & Tripura:** Champai AWS (dist Champhai) 13; Serchip AWS (dist Serchhip), Mokokchang (dist Mokokchung) 8 Each;
- ❖ **Bihar:** Forbesganj (dist Araria) 13; Galgalia (dist Kishanganj) 7;
- ❖ **East Uttar Pradesh:** Uska Bazar Fmo (dist Siddharth Nagar) 13; Nichlaul (dist Maharajganj), Katarniaghat (dist Bahraich), Balrampur (dist Balrampur), Balrampur(t) (dist Balrampur) 9 Each; Kakrahi (dist Siddharth Nagar), Trimohani Ghat Fmo (dist Maharajganj), Bhinga (dist Shrawasti) 7 Each;
- ❖ **Odisha:** Chandanpur (dist Mayurbhanj) 12; Daspalla (dist Nayagarh) 10; Betanati (dist Mayurbhanj), Rasagovindapur (dist Mayurbhanj) 9 Each; Daitari (dist Keonjhar) 8; Naraj (dist Cuttack) 7;
- ❖ **Coastal Karnataka:** Mudubidre (dist Dakshina Kannada), Uppinangadi (dist Dakshina Kannada) 11 Each; Mani (dist Dakshina Kannada), Bantwal (dist Dakshina Kannada) 10 Each; Castle Rock (dist Uttara Kannada), Kadra (dist Uttara Kannada), Gersoppa (dist Uttara Kannada) 8 Each; Mangaluru AP (dist Dakshina Kannada), Siddapura (dist Udupi) 7 Each;
- ❖ **Arunachal Pradesh:** Daparijo (dist Upper Subansiri), Tezu AWS (dist Lohit) 11 Each; Daporizo AWS (dist Upper Subansiri) 10; Pasighat AP (dist East Siang) 7;
- ❖ **Uttarakhand:** Loharkhet (dist Bageshwar), Kapkot (dist Bageshwar) 11 Each; Sama (dist Bageshwar) 10; Chamoli (dist Chamoli) 9;
- ❖ **Tamil Nadu, Puducherry & Karaikal:** Chinnakalar (dist Coimbatore) 11; Sholayar (dist Coimbatore) 10; Cincona (dist Coimbatore) 9; Valparai PTO (dist Coimbatore), Valparai Pap (dist Coimbatore) 8 Each; Valparai Taluk Office (dist Coimbatore), Kollidam (dist Mayiladuthurai), Upasi Tea Research AWS (dist Coimbatore), Lalpet (dist Cuddalore) 7 Each;
- ❖ **South Interior Karnataka:** Napoklu (dist Kodagu) 10; Virajpet (dist Kodagu), Somwarpet (dist Kodagu), Agumbe Emo (dist Shivamogga) 9 Each; Sringeri HMS (dist Chikkamagaluru) 7;
- ❖ **Kerala & Mahe:** Kodungallur (dist Thrissur), Karipur Ap. (dist Malappuram), Chemberi AWS (dist Cannur), Lower Sholayar AWS (dist Thrissur) 10 Each; Taliparamba (dist Cannur), Chalakudi (dist Thrissur), Udumbannoor AWS (dist Idukki), Panathur AWS (dist Kasargod), Muliya AWS (dist Kasargod) 9 Each;
- ❖ **East Rajasthan:** Bari (dist Dholpur), Kishanganj (dist Baran) 10 Each; Atru SR (dist Baran) 8; Tonk Vanasthali (dist Tonk) 7;
- ❖ **Sub Himalayan West Bengal & Sikkim:** Jiti T.e. (dist Jalpaiguri) 10; Jhallong (dist Kalimpong), Nagarkata (dist Jalpaiguri) 9 Each; Gajoldoba (dist Jalpaiguri) 8; Darjeeling (dist Darjeeling), Washabari Tea Estate (dist Jalpaiguri), Munsong (dist Darjeeling), Toorsa Tea Garden (dist Alipurduar) 7 Each;
- ❖ **Jharkhand:** Ranchi AP (dist Ranchi) 10; Pakuria (dist Pakur) 7;
- ❖ **East Madhya Pradesh:** Mohangarh (dist Tikamgarh) 9; Orchha (dist Niwari) 8; Buxwaha (dist Chhatarpur) 7;
- ❖ **Assam & Meghalaya:** Bihubar (dist Sibsagar), Margherita (dist Tinsukia), Ranganadi Nt Xing (dist Lakhimpur) 9 Each; B P Ghat (dist Sribhumi), A P Ghat (dist Cachar), Chauldhowaghat (dist Lakhimpur), Amraghat (dist Cachar) 7 Each;
- ❖ **Himachal Pradesh:** Paonta (dist Sirmaur) 8;
- ❖ **Madhya Maharashtra:** Radhanagari (dist Kolhapur) 8; Harsul - Fmo (dist Nashik) 7

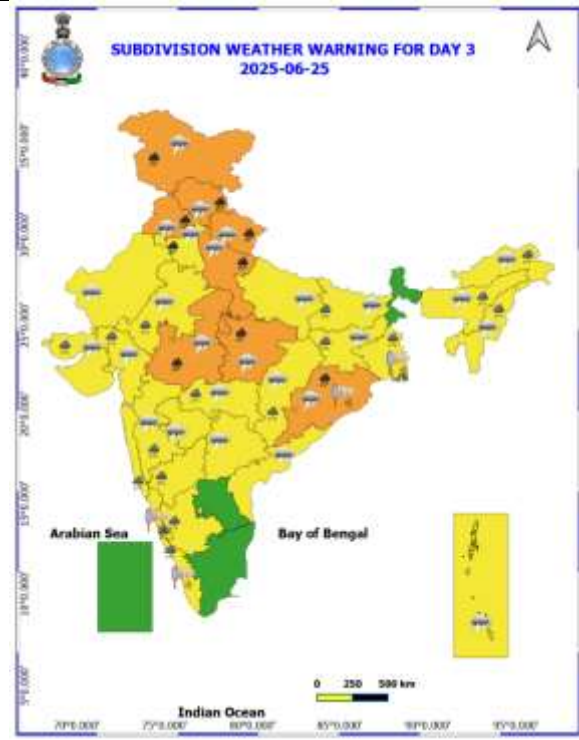
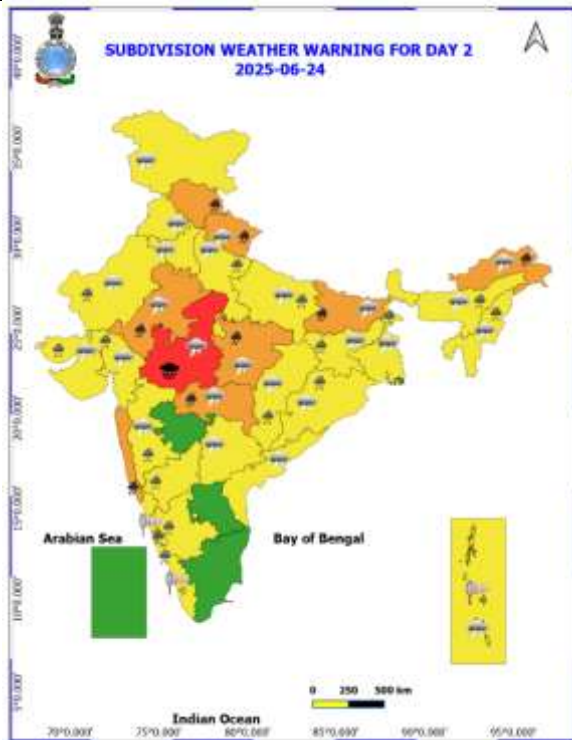
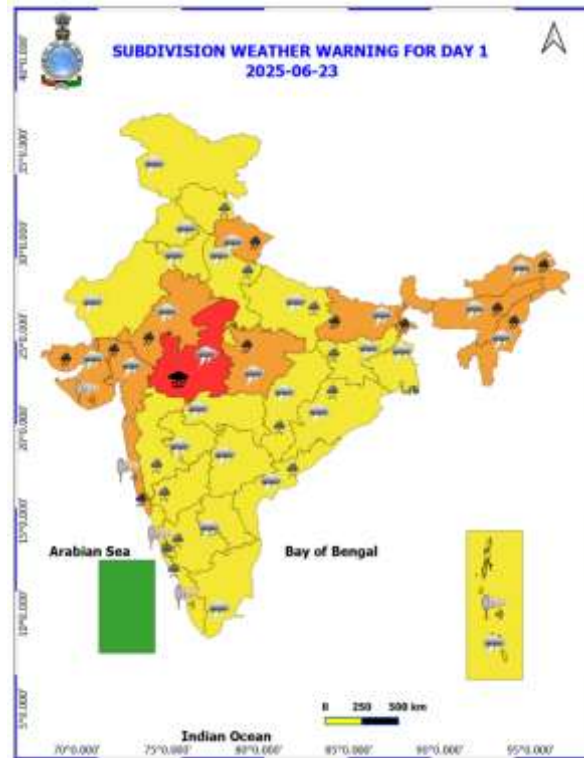
**Realised Gusty Winds (kmph) During Past 24hours ending at 0830 hrs IST of today the 23<sup>rd</sup> June:**

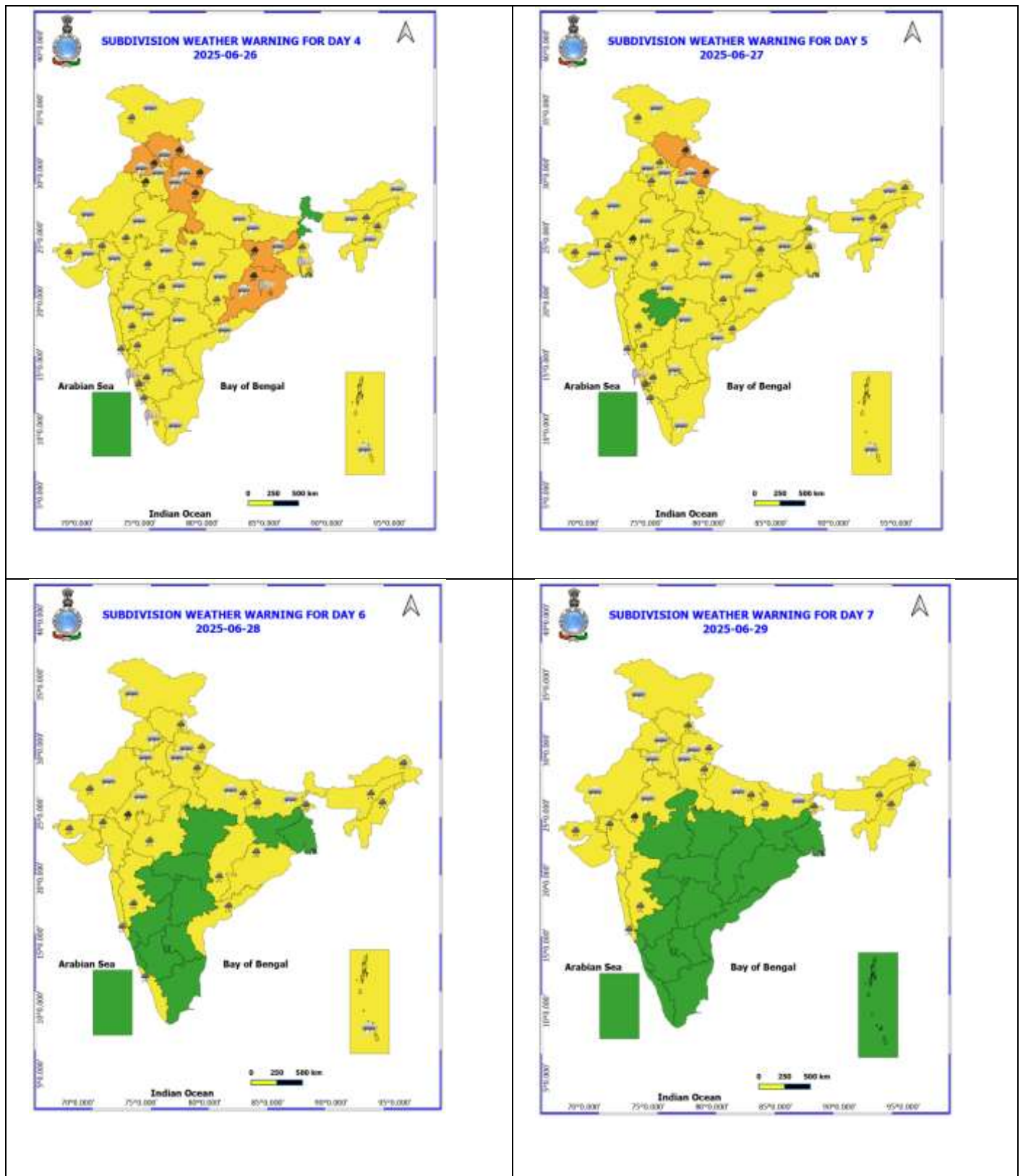
- ❖ **Himachal Pradesh:** Recong Peo-80, Kukumseri-52, Bajaura-37;
- ❖ **Madhya Maharashtra:** Mahabaleshwar- 59 Kmph, Karad (SATARA) - 57 Kmph, Nashik (Vilholi)-56 KMPH;
- ❖ **Saurashtra & Kutch:** 57kmph(veraval);
- ❖ **Andaman & Nicobar Islands:** Sri Vijayapuram (54); Swaraj Dweep (41); Hut Bay (39); Mayabunder (35); Shaheed Dweep (31); Ferrargunj (30);
- ❖ **West Uttar Pradesh:** AGRA(IAF)-48, FARRUKHABAD-44, SHAHJAHANPUR-44;
- ❖ **Punjab:** SANGRUR = 46; RUPNAGAR = 39;
- ❖ **Konkan:** Santacruz (MUMBAI) - 43 kmph, Palghar- 41 kmph;
- ❖ **Marathwada:** Parbhani (43 Kmph), Beed(Ambejogai)-48 Kmph;



Table-1								
7 Days Rainfall Forecast								
S.No.	Subdivision	23- Jun	24- Jun	25- Jun	26- Jun	27- Jun	28- Jun	29- Jun
		Day 1	Day 2	Day 3	Day 4	Day 5	Day 6	Day 7
1	ANDAMAN & NICOBAR ISLANDS	WB	WB	WB	FWS	FWS	FWS	FWS
2	ARUNACHAL PRADESH	WB	WB	FWS	SCT	FWS	FWS	WB
3	ASSAM & MEHGHALAYA	WB	FWS	FWS	FWS	FWS	FWS	FWS
4	NAGALAND, MANIPUR, MIZORAM AND TRIPURA	WB	WB	FWS	FWS	FWS	FWS	FWS
5	SUB HIMALAYAN WEST BENGAL & SIKKIM	WB	WB	FWS	FWS	WB	WB	WB
6	GANGETIC WEST BENGAL	WB	WB	WB	WB	WB	FWS	FWS
7	ODISHA	FWS	FWS	FWS	WB	WB	FWS	FWS
8	JHARKHAND	WB	WB	WB	WB	WB	FWS	FWS
9	BIHAR	FWS	FWS	FWS	SCT	SCT	SCT	FWS
10	EAST UTTAR PRADESH	FWS	FWS	FWS	FWS	FWS	WB	WB
11	WEST UTTAR PRADESH	SCT	FWS	FWS	WB	WB	WB	WB
12	UTTARAKHAND	WB	WB	WB	WB	WB	WB	WB
13	HARYANA, CHANDIGARH & DELHI	SCT	FWS	WB	WB	FWS	FWS	FWS
14	PUNJAB	SCT	SCT	WB	WB	FWS	FWS	FWS
15	HIMACHAL PRADESH	FWS	FWS	WB	WB	WB	FWS	FWS
16	JAMMU AND KASHMIR AND LADAKH	SCT	SCT	WB	WB	WB	SCT	SCT
17	WEST RAJASTHAN	SCT	SCT	ISOL	SCT	FWS	FWS	SCT
18	EAST RAJASTHAN	FWS	FWS	SCT	SCT	FWS	FWS	FWS
19	WEST MADHYA PRADESH	WB	WB	WB	WB	WB	FWS	FWS
20	EAST MADHYA PRADESH	WB	WB	WB	WB	WB	WB	WB
21	GUJRAT REGION	WB	WB	WB	WB	WB	WB	WB
22	SAURASHTRA & KUTCH	WB	FWS	FWS	WB	WB	WB	WB
23	KONKAN & GOA	WB	WB	WB	WB	WB	WB	WB
24	MADHYA MAHARASHTRA	SCT	SCT	SCT	SCT	SCT	SCT	FWS
25	MARATHWADA	ISOL	ISOL	ISOL	ISOL	ISOL	ISOL	ISOL
26	VIDARBHA	FWS	WB	WB	FWS	FWS	SCT	FWS
27	CHHATTISGARH	FWS	FWS	FWS	WB	WB	WB	WB
28	COASTAL ANDHRA PRADESH	FWS	SCT	ISOL	ISOL	FWS	FWS	SCT
29	TELANGANA	ISOL	ISOL	ISOL	ISOL	SCT	SCT	ISOL
30	RAYALASEEMA	FWS	ISOL	ISOL	ISOL	SCT	SCT	ISOL
31	TAMILNADU & PUDUCHERRY	ISOL	ISOL	ISOL	SCT	SCT	SCT	ISOL
32	COSTAL KARNATAKA	WB	WB	WB	WB	WB	WB	WB
33	NORTH INTERIOR KARNATAKA	SCT	SCT	SCT	SCT	FWS	SCT	SCT
34	SOUTH INTERIOR KARNATAKA	FWS	FWS	FWS	FWS	FWS	FWS	SCT
35	KERALA AND MAHE	WB	WB	WB	WB	WB	WB	FWS
36	LAKSHADWEEP	WB	WB	WB	WB	WB	WB	FWS

- As the lead period increases forecast accuracy decreases.





- Action may be taken based on ORANGE AND REDCOLOUR warnings.
- Vulnerable regions likely urban and hilly areas action may be initiated for heavy rainfall warning.
- As the lead period increases forecast accuracy decreases.

Detailed districtwise Multi Hazard weather warning for next five days available at <https://mausam.imd.gov.in/responsive/districtWiseWarningGIS.php>



## Weather forecast over Delhi/NCR during 23<sup>rd</sup> to 26<sup>th</sup> June 2025

### Past Weather:

There has been no large change in the minimum and maximum temperatures over Delhi/NCR during the past 24 hours. The maximum and minimum temperatures over Delhi were around 34 to 36 °C and 25 to 28 °C, respectively. The minimum temperatures were below normal by 1 to 3 °C, and the maximum temperatures were markedly below normal by 2 to 7 °C. Generally cloudy sky conditions with predominant surface wind from the east direction, with wind speeds up to 18 kmph, prevailed during the past 24 hours. Generally cloudy sky conditions with wind speed less than 08 kmph from a variable direction prevailed over the region in the forenoon today.

### Weather Forecast:

**23.06.2025:** Generally cloudy sky. Light to Moderate rain/thunderstorm/lightning. The maximum temperatures over Delhi are likely to be in the range of 35 to 37°C. The maximum temperature will be below normal by up to 1 - 2°C. The predominant surface wind will likely be from the southeast direction with a wind speed of less than 10 kmph in the afternoon. The wind speed will gradually increase, becoming 15-18 kmph from the southeast direction during evening and night.

**24.06.2025:** Generally cloudy sky. Light to Moderate rain/thunderstorm/lightning. The maximum and minimum temperatures over Delhi are likely to be in the range of 34 to 36°C and 25 to 27°C, respectively. The minimum temperature will be near normal, and the maximum temperature will be below normal by up to 2 to 4°C. The predominant surface wind will likely be from the northwest direction with a wind speed of less than 10 kmph during the morning hours. The wind speed will gradually increase, becoming 15-18 kmph from the northwest direction in the afternoon. It will decrease, becoming less than 15 kmph from the west direction during evening and night.

**25.06.2025:** Generally cloudy sky. Light to Moderate rain accompanied by thunderstorms/lightning. The maximum and minimum temperatures over Delhi are likely to be in the range of 33 to 35°C and 26 to 28°C, respectively. The minimum temperature will be below normal up to 1 to 2°C, and the maximum temperature will be below normal up to 2 to 4°C. The predominant surface wind will likely be from the west direction with a wind speed of less than 15 kmph during the morning hours. The wind speed will gradually decrease, becoming less than 12 kmph from the south direction in the afternoon. It will increase to less than 15 kmph from the south direction during the evening and night.

**26.06.2025:** Generally cloudy sky. Light to Moderate rain accompanied by thunderstorms/lightning. The maximum and minimum temperatures over Delhi are likely to be in the range of 33 to 35°C and 26 to 28°C, respectively. The minimum temperature will be below normal up to 1 to 2 °C, and the maximum temperature will be below normal up to 2 to 4°C. The predominant surface wind will likely be from the west direction with a wind speed of less than 15 kmph during the morning hours. The wind speed will gradually decrease, becoming less than 12 kmph from the east direction in the afternoon. It will decrease to less than 10 kmph from the northeast direction during the evening and night.

### Impact expected and Action Suggested due to thunderstorm with lightning/gusty winds:

- Be cautious and take precautionary measures, though there is the likelihood of thunderstorm/lightning and gusty winds (speed 40 – 50 kmph) temporarily reaching 60 kmph during thunderstorm with dust rising surface winds.
- Breaking of tree branches, uprooting of large avenue trees, Large dead limbs blown from trees, Damage to standing crops, Minor to major damage to power and communication lines due to breaking of branches, Partial damage to vulnerable structures due to strong winds, Loose objects may fly.
- People are advised to keep a watch on the weather for worsening conditions and be ready to move to safer places accordingly, stay indoors, close windows & doors and avoid travel if possible, take safe shelters; do not take shelter under trees, do not lie on concrete floors and do not lean against concrete walls, unplug electrical/ electronic appliances, immediately get out of water bodies, keep away from all the objects that conduct electricity.



### **Impact & Action Suggested due to extremely heavy falls/ very heavy rainfall:**

- ✓ **Extremely heavy rainfall (>20 cm/24 hours) likely at isolated places over West Madhya Pradesh on 23<sup>rd</sup> & 24<sup>th</sup> June.**
- ✓ **Very heavy rainfall** over East Rajasthan, Madhya Pradesh, Bihar, Konkan, Arunachal Pradesh on 23<sup>rd</sup> & 24<sup>th</sup>; Vidarbha on 24<sup>th</sup>; Jharkhand on 26<sup>th</sup>, Odisha, Haryana, Punjab, West Uttar Pradesh on 25<sup>th</sup> & 26<sup>th</sup> June; Gujarat state, Assam & Meghalaya, Nagaland on 23<sup>rd</sup>; Himachal Pradesh, Uttarakhand during 23<sup>rd</sup>-27<sup>th</sup>, Jammu-Kashmir-Ladakh-Gilgit-Baltistan-Muzaffarabad on 25<sup>th</sup> June.

#### **Impact Expected**

- Localized Flooding of roads, water logging in low lying areas and closure of underpasses mainly in urban areas of the above region.
- Occasional reduction in visibility due to heavy rainfall.
- Disruption of traffic in major cities due to water logging in roads leading to increased travel time.
- Minor damage to kutcha roads.
- Possibilities of damage to vulnerable structure.
- Localized Landslides/Mudslides/landslips/mudslips/landsinks/mudsinks.
- Damage to horticulture and standing crops in some areas due to inundation.
- It may lead to riverine flooding in some river catchments (for riverine flooding please visit Web page of CWC)

#### **Action Suggested**

- Check for traffic congestion on your route before leaving for your destination.
- Follow any traffic advisories that are issued in this regard.
- Avoid going to areas that face the water logging problems often.
- Avoid staying in vulnerable structure.

#### **Agromet advisories for likely impact of Heavy / Heavy to Very Heavy / Extremely Heavy Rainfall (Based on the IBF and advisories issued by different AMFUs)**

- In Gujarat, postpone nursery sowing of rice. Ensure proper drainage facilities in already sown rice nurseries, sugarcane fields, banana and mango plantations to prevent waterlogging. Provide support to sugarcane and banana to prevent lodging. In Saurashtra & Kutch, postpone sowing of *kharif* groundnut, cotton, sesame, pearl millet, green gram, black gram, cowpea, pigeon pea, maize, sorghum and vegetables. Drain out excess rain water from vegetable nurseries and horticultural plantations.
- In West Madhya Pradesh, Postpone harvesting of maize. Postpone sowing of pearl millet, soybean, pigeon pea and paddy nurseries. Make necessary arrangements to drain out excess water from vegetables and orchards to avoid waterlogging. In Kymore Plateau and Satpura Hill Zone of East Madhya Pradesh, harvest matured green gram and black gram crop and store in a safe place. In Gird Zone of West Madhya Pradesh, harvest matured maize crop and keep it in safe place. Postpone sowing of soybean and transplanting of chilli, tomato, brinjal etc. and ensure proper drainage in already sown / transplanted fields.
- In East Rajasthan, harvest the matured vegetables such as okra and cucurbits and store them in safe place. Make arrangement for draining out excess water from the fields of groundnut and green gram.
- In Uttarakhand, make proper drainage channels in rice nurseries, pigeon pea, groundnut, maize, soybean, barnyard millet and finger millet to avoid waterlogging. In Bhabar and Tarai Zone of Uttarakhand, harvest matured spring maize crop and vegetables (pumpkin, tomato, okra, chilli, French bean etc.) and store in safe place during clear weather.
- In Sub-Montane and Low Hills Sub-Tropical Zone of Himachal Pradesh, provide drainage in maize and vegetable fields. Strengthen the support for creepers and tall vegetable crops (tomato, capsicum etc.). In Mid Hills Sub-Humid Zone of Himachal Pradesh, harvest matured fruits of plum, pear and stonefruit to minimize losses due to heavy rains. Make proper drainage channels in the fields of maize, apple, pear, pomegranate, kiwi, cucumber and tomato to avoid waterlogging. Provide support to cucumber vines and tomato plants to prevent lodging.
- In East Uttar Pradesh, make necessary arrangement to protect paddy nurseries from the adverse impacts of heavy rainfall. In West Uttar Pradesh, make arrangement to drain out excess water from the fields of pigeon pea and vegetables. Provide support to bottle gourd vegetables.
- In Sub-Himalayan West Bengal, maintain proper drainage channels in rice nurseries and fields of jute and ginger to avoid water stagnation.

- In Jharkhand, make necessary arrangements to drain out excess water from already sown maize fields, rice and vegetable nurseries.
- In Odisha, ensure proper drainage from already sown rice nurseries, fields of maize and vegetables to prevent waterlogging. Cover rice and vegetable nurseries with plastic sheets to prevent washing away of seeds.
- In Konkan & Goa make arrangement to drain out excess water from rice nurseries, fields of finger millet, groundnut and orchards to prevent waterlogging.
- In *ghat* areas of Madhya Maharashtra, drain out excess water from rice nurseries and banana plantations to prevent waterlogging.
- In Assam, keep the harvested produce of sesame, foxtail millet, *Boro* rice, banana and citrus at safer places. Ensure proper drainage in *Sali* rice nursery, maize and sugarcane fields, arecanut and coconut plantations to prevent waterlogging. In Barak Valley Zone of Assam, postpone nursery sowing of *Sali* rice.
- In Meghalaya, postpone nursery sowing of rice especially in valleys. Ensure proper drainage in the fields of maize, ginger, French bean, cowpea, vegetables and around rice nurseries to prevent waterlogging. Provide strong bamboo stakes or trellis support to cow pea, cucumber and bottle gourd to prevent vines from trailing on wet ground. Provide support to banana plant to prevent lodging.
- In Arunachal Pradesh, keep the harvested produce of soybean and vegetables such as chilli and okra at a safer place. Ensure proper drainage in rice nurseries, kiwi and apple orchards to avoid waterlogging.
- In Nagaland, avoid transplanting of TRC/WRC rice. Postpone sowing of soybean. Provide proper staking to vine type plants.

### **Livestock / Fishery**

- Keep the animals inside the shed during heavy rainfall and provide them balanced feed.
- Store feed and fodder in a safe place to prevent spoilage.
- Construct an outlet with proper netting around the ponds to drain out excess water, thereby preventing fish from escaping in case of overflow.

### **Agromet advisories for likely impact of Thunderstorm / Gusty Winds / Squally Winds**

#### **(Based on the IBF and advisories issued by different AMFUs)**

- Provide mechanical support to horticultural crops and staking or support to vegetables and young fruit plants / fruit-bearing plants to avoid lodging due to strong winds.

## Flash flood guidance:

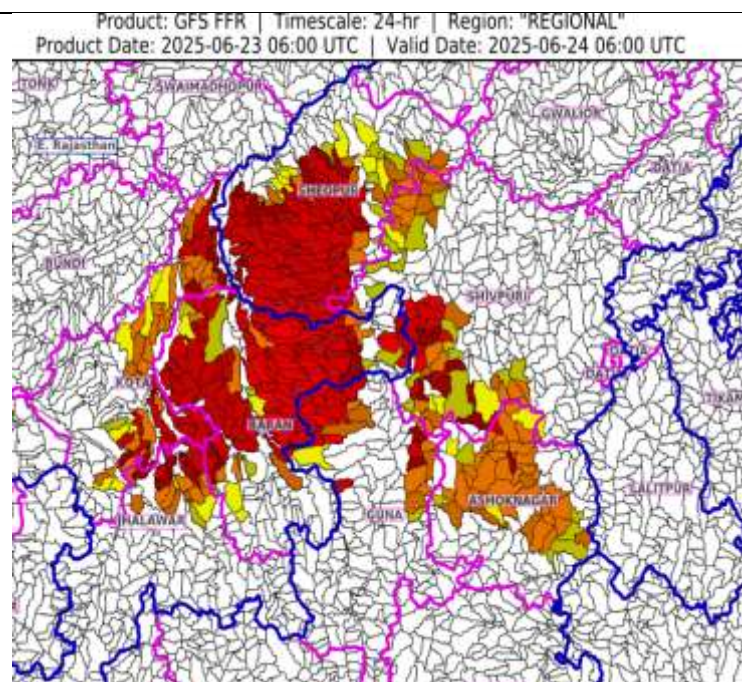
24 hours Outlook for the Flash Flood Risk (FFR) till 1130 IST of 24-06-2025 :

Low to Moderate flash flood risk likely over few watersheds & neighbourhoods of following Met Sub-divisions during next 24 hours.

East Rajasthan - Baran, Jhalawar and Kota districts.

West Madhya Pradesh - Ashoknagar, Guna, Sheopur and Shivpuri districts.

Surface runoff/ Inundation may occur at some fully saturated soils & low-lying areas over Area of Concern (AoC) as shown in map due to expected rainfall occurrence in next 24 hours.



24 hours Outlook for the Flash Flood Risk (FFR) till 1130 IST of 24-06-2025 :

Low to Moderate flash flood risk likely over few watersheds & neighbourhoods of following Met Sub-divisions during next 24 hours.

Arunachal Pradesh - Changlang, Dibang Valley, East Kameng, East Siang, Lohit, Lower Dibang Valley, Lower Subansiri, Papum-Pare, Tawang, Tirap, West Kameng, West Siang, Anjaw, Upper Siang and Kurung Kumey districts.

Nagaland Mizoram Manipur Tripura ( NMMT) –

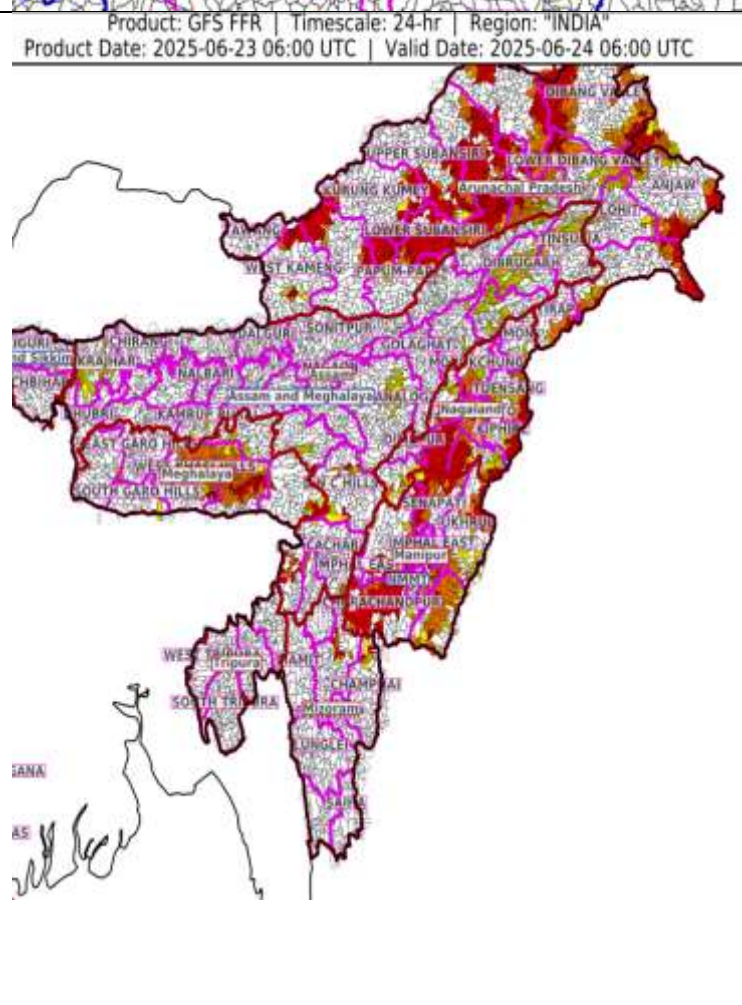
Manipur: Bishnupur, Chandel, Churachandpur, Imphal East, Imphal West, Senapati, Tamenglong, Thoubal, Ukhrul;

Mizoram: Aizawl, Champhai;

Nagaland: Dimapur, Kiphire, Kohima, Longleng, Mokokchung, Mon, Peren, Phek, Tuensang, Wokha, Zunheboto;

Tripura: Gomati, Khowai, Sipahijala, Unakoti.

Surface runoff/ Inundation may occur at some fully saturated soils & low-lying areas over Area of Concern (AoC) as shown in map due to expected rainfall occurrence in next 24 hours.





## Legends & abbreviations:

- ❖ **Heavy Rain:**64.5-115.5mm; **Very Heavy Rain:**115.6-204.4mm; **Extremely Heavy Rain:** >204.4mm.
- ❖ **Obsy:** Observatory; Automatic Weather Station; **ARG:** Automatic Rain Gauge; **dist:** District; **NH:** National Highway; **KVK:** Krishi Vigyan Kendra; **DVC:** Damodar Valley Corporation; **PTO:** Part Time Office, **Aero:** Aerodrome, **IAF:** Indian Air Force.
- ❖ **Region wise classification of meteorological Sub-Divisions:**
  - **Northwest India:** Western Himalayan Region (Jammu-Kashmir-Ladakh-Gilgit-Baltistan-Muzaffarabad, Himachal Pradesh and Uttarakhand); Punjab, Haryana-Chandigarh-Delhi; West Uttar Pradesh, East Uttar Pradesh, West Rajasthan and East Rajasthan.
  - **Central India:** West Madhya Pradesh, East Madhya Pradesh, Vidarbha and Chhattisgarh.
  - **East India:** Bihar, Jharkhand, Sub-Himalayan West Bengal & Sikkim; Gangetic West Bengal, Odisha and Andaman & Nicobar Islands.
  - **Northeast India:** Arunachal Pradesh, Assam & Meghalaya and Nagaland, Manipur, Mizoram & Tripura.
  - **West India:** Gujarat Region, Saurashtra & Kutch, Konkan & Goa, Madhya Maharashtra and Marathawada.
  - **South India:** Coastal Andhra Pradesh & Yanam, Telangana, Rayalaseema, Coastal Karnataka, North Interior Karnataka, South Interior Karnataka, Kerala & Mahe, Tamil Nadu, Puducherry & Karaikal and Lakshadweep.

## LEGENDS

1. अंडमान और निकोबार द्वीपसमूह

2. अरुणाचल प्रदेश

3. असम और मेघालय

4. नागालैंड, मणिपुर, मिजोरम और त्रिपुरा

5. उप-हिमालयी पश्चिम बंगाल और सिक्किम

6. गंगीय पश्चिम बंगाल

7. ओडिशा

8. झारखंड

9. बिहार

10. पूर्वी उत्तर प्रदेश

11. पश्चिम उत्तर प्रदेश

12. उत्तराखंड

13. हरियाणा, चंडीगढ़ और दिल्ली

14. पंजाब

15. हिमाचल प्रदेश

16. जम्मू और कश्मीर और लद्दाख

17. पश्चिम राजस्थान

18. पूर्वी राजस्थान

19. पश्चिम मध्य प्रदेश

20. पूर्वी मध्य प्रदेश

21. गुजरात

22. सौराष्ट्र

23. कोंकण और गोवा

24. मध्य महाराष्ट्र

25. मराठवाड़ा

26. विदर्भ

27. छत्तीसगढ़

28. तटीय आंध्र प्रदेश और यनम

29. तेलंगाना

30. रायलसीमा

31. तमिलनाडु, पुडुचेरी और कराईकल

32. तटीय कर्नाटक

33. आंतरिक उत्तरी कर्नाटक

34. आंतरिक दक्षिणी कर्नाटक

35. केरल और माहे

36. लक्षद्वीप



1. Andaman & Nicobar Islands

2. Arunachal Pradesh

3. Assam & Meghalaya

4. Nagaland, Manipur, Mizoram & Tripura

5. Sub-Himalayan West Bengal & Sikkim

6. Gangetic West Bengal

7. Odisha

8. Jharkhand

9. Bihar

10. East Uttar Pradesh

11. West Uttar Pradesh

12. Uttarakhand

13. Haryana, Chandigarh & Delhi

14. Punjab

15. Himachal Pradesh

16. Jammu & Kashmir and Ladakh

17. West Rajasthan

18. East Rajasthan

19. West Madhya Pradesh

20. East Madhya Pradesh

21. Gujarat

22. Saurashtra

23. Konkan & Goa

24. Madhya Maharashtra

25. Marathwada

26. Vidarbha

27. Chhattisgarh

28. Coastal Andhra Pradesh & Yanam

29. Telangana

30. Rayalaseema

31. Tamilnadu, Puducherry & Karaikal

32. Coastal Karnataka

33. North Interior Karnataka

34. South Interior Karnataka

35. Kerala & Mahe

36. Lakshadweep

## SPATIAL DISTRIBUTION (% of Stations reporting)

% Stations	Category	% Stations	Category
76-100	Widespread (WS/Most Places)	26-50	Scattered (SCT/A Few Places)
51-75	Fairly Widespread (FWS/Many Places)	1-25	Isolated (ISOL)



Fog



Heavy Snow



Cold Wave



Heavy Rain



Dust Storm



Cold Day



Very Heavy Rain



Heat Wave



Ground Frost



Extremely Heavy Rain



Warm Night



Thunder & Lightning



Hot Day



Hailstorm



Hot & Humid



Dust Raising Winds



Strong Surface Winds

### COLOUR CODED WARNING

No Warning (No Action)

Watch (Be Aware)

Alert (Be Prepared To Take Action)

Warning (Take Action)

### Probabilistic Forecast

Terms	Probability of Occurrence (%)
Unlikely	< 25
Likely	25 - 50
Very Likely	50 - 75
Most Likely	> 75

\* Red colour warning does not mean "Red Alert", Red colour warning means "Take Action".

Forecast and Warning for any day is valid from 0830 hours IST of day till 0830 hours IST of next day.

For more details, kindly visit <https://mausam.imd.gov.in> or contact: 011-2434-4599

(Service to the Nation since 1875)



### DEFINITION/CRITERIA

#### Rain/ Snow \*

Heavy: 64.5 to 115.5 mm/cm \*  
Very Heavy: 115.6 to 204.4 mm/cm \*  
Extremely Heavy: > 204.4 mm/cm \*

#### Heat Wave

When maximum temperature of a station reaches  $\geq 40^{\circ}\text{C}$  for plains and  $\geq 30^{\circ}\text{C}$  for hilly regions  
(a) Based on Departure from normal

Heat Wave: Maximum Temperature Departure from normal  $4.5^{\circ}\text{C}$  to  $6.4^{\circ}\text{C}$ .

Severe Heat Wave: Maximum Temperature Departure from normal  $\geq 6.5^{\circ}\text{C}$

(b). Based on Actual maximum temperature

Heat Wave: When actual maximum temperature  $\geq 45^{\circ}\text{C}$ .

Severe Heat Wave: When actual maximum temperature  $\geq 47^{\circ}\text{C}$ .

(c). Criteria for heat wave for coastal stations

When maximum temperature departure is  $> 4.5^{\circ}\text{C}$  from normal. Heat Wave may be described provided maximum temperature  $\geq 37^{\circ}\text{C}$ .

#### Warm Night

When maximum temperature remains  $40^{\circ}\text{C}$

Warm Night: When minimum temperature departure  $4.5^{\circ}\text{C}$  to  $6.4^{\circ}\text{C}$ .

Severe Warm Night: When minimum temperature departure  $> 6.4^{\circ}\text{C}$ .

#### Cold Wave

When minimum temperature of a station  $\leq 10^{\circ}\text{C}$  for plains and  $\leq 0^{\circ}\text{C}$  for hilly regions.

(a). Based on departure

Cold Wave: Minimum Temperature Departure from normal  $-4.5^{\circ}\text{C}$  to  $-6.4^{\circ}\text{C}$ .

Severe Cold Wave: Minimum Temperature Departure from normal  $\leq -6.5^{\circ}\text{C}$

(b) Based on actual Minimum Temperature (for Plains only)

Cold Wave: When Minimum Temperature is  $\leq 4.0^{\circ}\text{C}$

Severe Cold Wave: When Minimum Temperature is  $\leq 2.0^{\circ}\text{C}$

(c) For Coastal Stations

When Minimum Temperature departure is  $\leq -4.5^{\circ}\text{C}$  & actual Minimum Temperature is  $\leq 15^{\circ}\text{C}$

#### Cold Day

When minimum temperature of a station  $\leq 10^{\circ}\text{C}$  for plains and  $\leq 0^{\circ}\text{C}$  for hilly regions

Based on departure

Cold Day: Maximum Temperature Departure from normal  $-4.5^{\circ}\text{C}$  to  $-6.4^{\circ}\text{C}$ .

Severe Cold Day: Maximum Temperature Departure from normal  $\leq -6.5^{\circ}\text{C}$

#### Fog

Phenomenon of small droplets suspended in air and the horizontal visibility  $< 1\text{km}$

Moderate Fog: When the visibility between 500-200 metres

Dense Fog: when the visibility between 50- 200 metres

Very Dense Fog: when the visibility  $< 50$  metres

#### Thunderstorm

Sudden electrical discharges manifested by a flash of light (Lightning) and a sharp rumbling sound (thunder)

#### Dust/Sand Storm

An ensemble of particles of dust or sand energetically lifted to great heights by a strong and turbulent wind.

#### Frost

Ice deposits on ground

Air temperature  $\leq 4^{\circ}\text{C}$  ( over Plains)

#### Squall

A strong wind that rises suddenly, lasts for atleast 1 minute.

Moderate: Wind speed 52-61 kmph

Severe: Wind speed 62-67 kmph

Very Severe: Wind speed  $> 67$  kmph

#### Sea State

Effect of various waves in the sea over specific area

Rough to very rough: Wind speed 41-62 kmph (22-33 knots) & Wave height 2.5-6 metre

High to very high: Wind speed 63-117 kmph ( 34-63 knots) & Wave height 6-14 metre

Phenomenal: Wind speed  $> 117$  kmph ( $> 63$  knots) & Wave height  $> 14$  metre

#### Cyclone

Cyclonic Storm: Wind speed 62-87 kmph (34-47 knots)

Severe Cyclonic Storm: Wind speed 88-117 kmph (48-63 knots)

Very Severe Cyclonic Storm: Wind speed 118-165 kmph (64 - 89 knots)

Extremely Severe Cyclonic Storm: Wind speed 166-220 kmph (90 -119 knots)

Super Cyclone Storm: Wind speed  $> 220$  kmph ( $> 119$  knots)

\* Red colour warning does not mean "Red Alert", Red colour warning means "Take Action".

Forecast and Warning for any day is valid from 0830 hours IST of day till 0830 hours IST of next day.

For more details, kindly visit <https://mausam.imd.gov.in> or contact: 011-2434-4599

(Service to the Nation since 1875)

**Hot and Humid:** When maximum temperatures remain  $3^{\circ}\text{C}$  above normal along with the above normal relative humidity.