



Government of India  
Ministry of Earth Sciences  
India Meteorological Department



Press Release

Date: 28<sup>th</sup> June, 2025

Time of Issue: 1400 hours IST

**Subject: (i) Conditions are becoming favourable for further advance of Southwest monsoon over remaining parts of the country during next 2 days.**  
**(ii) Heavy to very heavy rainfall activity likely to continue over many parts of Northwest, Central, East & Northeast India during next 7 days, with isolated extremely heavy falls over Uttarakhand and Uttar Pradesh on 30<sup>th</sup> June, 2025.**

**Southwest Monsoon (Annexure I):**

- ❖ The Northern Limit of Monsoon continue to pass through 27.0°N/68.5°E, 27.0°N/70.0°E, Jaisalmer, Bikaner, Jhunjhunu, Bharatpur, Rampur, Sonipat, Anup Nagar and 29.0°N/70.0°E.
- ❖ Conditions are becoming favourable for further advance of Southwest monsoon over remaining parts of the country during next 2 days.

**Realised weather during past 24 hours till 0830 hours IST of today, the 28<sup>th</sup> June, 2025 (Annexure II):**

- ❖ **Heavy to very heavy rainfall** has been recorded at isolated places over Uttarakhand, East Madhya Pradesh, Andaman & Nicobar Island; **Heavy rainfall** at isolated places over Himachal Pradesh, Punjab, Haryana, West Rajasthan, Uttar Pradesh, Chhattisgarh, West Madhya Pradesh, Gangetic West Bengal, Odisha, Jharkhand, Vidarbha, Nagaland, Saurashtra & Kutch, Konkan, Madhya Maharashtra, Coastal Karnataka, Kerala & Mahe.
- ❖ **Thunderstorm accompanied with Squally/Gusty winds with speed 40-70 kmph** at isolated places over Himachal Pradesh, Saurashtra & Kutch, Andaman & Nicobar Islands, Madhya Maharashtra, West Uttar Pradesh, Gujarat Region, Madhya Pradesh, Haryana, Kerala, Konkan, Marathwada and Bihar.

For more details of realised weather, kindly refer [Annexure I](#),

**i. Weather Systems, Forecast and Warnings (refer to Annexure III & IV):**

- ❖ Under the influence of the **upper air cyclonic circulation** over Saurashtra & Kutch & adjoining northeast Arabian sea, a **low pressure area** has formed over Kutch & neighbourhood at 0830 hrs IST of today, the 28<sup>th</sup> June, 2025.
- ❖ A **cyclonic circulation** lay over central parts of south Uttar Pradesh in lower tropospheric levels.
- ❖ An **upper air cyclonic circulation** lay over southwest Bangladesh & adjoining Gangetic West Bengal extending upto middle tropospheric levels tilting southwestwards with height. Under its influence a low-pressure area is likely to form over the north Bay of Bengal and adjoining coastal Bangladesh and West Bengal by tomorrow. Subsequently it is likely to move slowly west-northwestwards across Gangetic West Bengal and north Odisha & Jharkhand.
- ❖ An east-west **trough** run from the **upper air cyclonic circulation** over southwest Bangladesh & adjoining Gangetic West Bengal to northeast Madhya Pradesh in lower tropospheric levels.
- ❖ A **cyclonic circulation** lay over northeast Assam in lower tropospheric levels.
- ❖ Under the influence of these systems, the following weather is likely:

**West India:**

- ✓ **Heavy to very heavy rainfall** at isolated places likely over Konkan & Goa, Ghat areas of Madhya Maharashtra, Gujarat state during next 7 days.
- ✓ Light/moderate rainfall at most/many places likely over the region during next 7 days.

**Northwest India:**

- ✓ **Extremely heavy rainfall (>20 cm/24 hours) likely at isolated places over Uttarakhand and Uttar Pradesh on 30<sup>th</sup> June.**

- ✓ Isolated **heavy rainfall** likely over Himachal Pradesh, Uttarakhand, Uttar Pradesh during 28<sup>th</sup> June-04<sup>th</sup> July; Punjab, Haryana & Chandigarh during 28<sup>th</sup> June-02<sup>nd</sup> July; West Rajasthan on 28<sup>th</sup> June, 03<sup>rd</sup> & 04<sup>th</sup> July; East Rajasthan during 01<sup>st</sup>-04<sup>th</sup> July with **very heavy rainfall** over Himachal Pradesh on 29<sup>th</sup> & 30<sup>th</sup> June; Uttarakhand during 28<sup>th</sup> June-02<sup>nd</sup> July; Punjab on 29<sup>th</sup> June; Haryana, Chandigarh on 29<sup>th</sup> & 30<sup>th</sup> June; Uttar Pradesh on 29<sup>th</sup> June, 01<sup>st</sup> & 02<sup>nd</sup> July; East Rajasthan on 03<sup>rd</sup> & 04<sup>th</sup> July.
- ✓ Light/moderate rainfall at most/many places accompanied with **thunderstorm, lightning & gusty winds speed reaching 30-40 kmph** likely over Northwest India during next 7 days.

#### East & Central India:

- ✓ Isolated **heavy rainfall** over Madhya Pradesh, Chhattisgarh, Jharkhand & Odisha during 28<sup>th</sup> June-04<sup>th</sup> July; Vidarbha on 01<sup>st</sup> & 02<sup>nd</sup> July; Andaman & Nicobar Islands on 28<sup>th</sup> June; Sub-Himalayan West Bengal & Sikkim on 28<sup>th</sup> June & during 30<sup>th</sup> June-02<sup>nd</sup> July; Gangetic West Bengal during 28<sup>th</sup> June-01<sup>st</sup> July; Bihar during 29<sup>th</sup> June-04<sup>th</sup> July; with **very heavy rainfall** over West Madhya Pradesh on 28<sup>th</sup> June, 01<sup>st</sup> & 02<sup>nd</sup> July; East Madhya Pradesh on 28<sup>th</sup> June & during 01<sup>st</sup>-04<sup>th</sup> July; Chhattisgarh on 01<sup>st</sup> & 02<sup>nd</sup> July; Gangetic West Bengal on 29<sup>th</sup> & 30<sup>th</sup> June; Bihar during 29<sup>th</sup> June-02<sup>nd</sup> July; Jharkhand during 29<sup>th</sup> June-01<sup>st</sup> July; Odisha during 28<sup>th</sup> June-01<sup>st</sup> July.
- ✓ Light/moderate rainfall at most/many places accompanied with **thunderstorm, lightning & gusty winds speed reaching 30-40 kmph** likely over Madhya Pradesh, Chhattisgarh, Bihar, Jharkhand during next 7 days; Andaman & Nicobar Islands & Odisha on 28<sup>th</sup> & 29<sup>th</sup>; Gangetic West Bengal during 28<sup>th</sup> – 30<sup>th</sup> June; Vidarbha on 01<sup>st</sup> & 02<sup>nd</sup> July.

#### Northeast India:

- ✓ Light/moderate rainfall at most places accompanied with **thunderstorm, lightning and isolated heavy rainfall** likely to continue over Northeast India during next 7 days with **very heavy rainfall** over Arunachal Pradesh on 02<sup>nd</sup> & 03<sup>rd</sup> July; Assam & Meghalaya during 02<sup>nd</sup>-04<sup>th</sup> July; Nagaland on 01<sup>st</sup> & 02<sup>nd</sup> July.

#### South Peninsular India:

- ✓ Isolated **heavy rainfall** likely over Tamil Nadu on 28<sup>th</sup>; Kerala & Mahe on 28<sup>th</sup> & 29<sup>th</sup> June, 03<sup>th</sup> & 04<sup>th</sup> July; Coastal Karnataka, South Interior Karnataka during 02<sup>nd</sup> -04<sup>th</sup> July; with **very heavy rainfall** over Kerala on 28<sup>th</sup> June.
- ✓ **Strong surface winds** (speed reaching 40-50 kmph) very likely over Tamil Nadu on 28<sup>th</sup> & 29<sup>th</sup> June; Kerala & Mahe, Coastal Karnataka on 28<sup>th</sup> June; Interior Karnataka, Coastal Andhra Pradesh & Yanam, Rayalaseema & Telangana during 28<sup>th</sup> June-02<sup>nd</sup> July.
- ✓ Light/moderate rainfall at many/some places over Kerala & Mahe, Lakshadweep, Coastal Karnataka; isolated to scattered rainfall accompanied with isolated **thunderstorm, lightning** over Coastal Andhra Pradesh & Yanam, Telangana, Coastal Karnataka during next 5 days.

#### Hot & Humid Weather warning:

- ❖ **Hot & humid weather** is likely to prevail over plains of Assam & Tamil Nadu during 28<sup>th</sup>- 30<sup>th</sup> June.

#### Fishermen Warnings:

- ❖ **Fishermen are advised to avoid venturing into the following from 28<sup>th</sup> to 03<sup>rd</sup> July, 2025.**

##### Arabian Sea:

- ❖ Fishermen are advised not to venture off Gujarat coast for day 1 & day 5 (28<sup>th</sup> June to 03<sup>rd</sup> July), entire Konkan coast for day 1 to day 2 (28<sup>th</sup> to 29<sup>th</sup> July), along and off north Konkan coast for day 5 along and off Goa coast for day 1 (28<sup>th</sup> June); along and off Karnataka, Kerala coasts coast for day 1 (28<sup>th</sup> June); Fishermen are advised not to venture along and off the Somalia coast and adjoining sea areas, Oman and adjoining Yemen coast & adjoining sea areas for day 1 to day 5 (28<sup>th</sup> June to 02<sup>nd</sup> July). Over central & adjoining north, south Arabian Sea for day 1 to day 5 (28<sup>th</sup> June to 02<sup>nd</sup> July); most parts of north Arabian Sea for day 1 to day 5 (28<sup>th</sup> June to 02<sup>nd</sup> July); over Lakshadweep area for day 1 (28<sup>th</sup> June).

##### Bay of Bengal:

- ❖ Fishermen are advised not to venture along and off north Andhra Pradesh for day 1, day 2 and day 5, north Andhra Pradesh and adjoining Odisha, and west Bengal coast for day 1 to day 5. Over many parts of central Bay and north Bay for day 1 to day 4 and southeast Bay of Bengal for day 1 to day 4. Fishermen are advised not to venture over the Gulf of Mannar for day 1 & day 2. Fishermen are advised not to venture over the Andaman Sea for day 1 to day 3 (28<sup>th</sup> June to 01<sup>st</sup> July)  
Total suspension of fishing operations is suggested over above mentioned areas and dates.

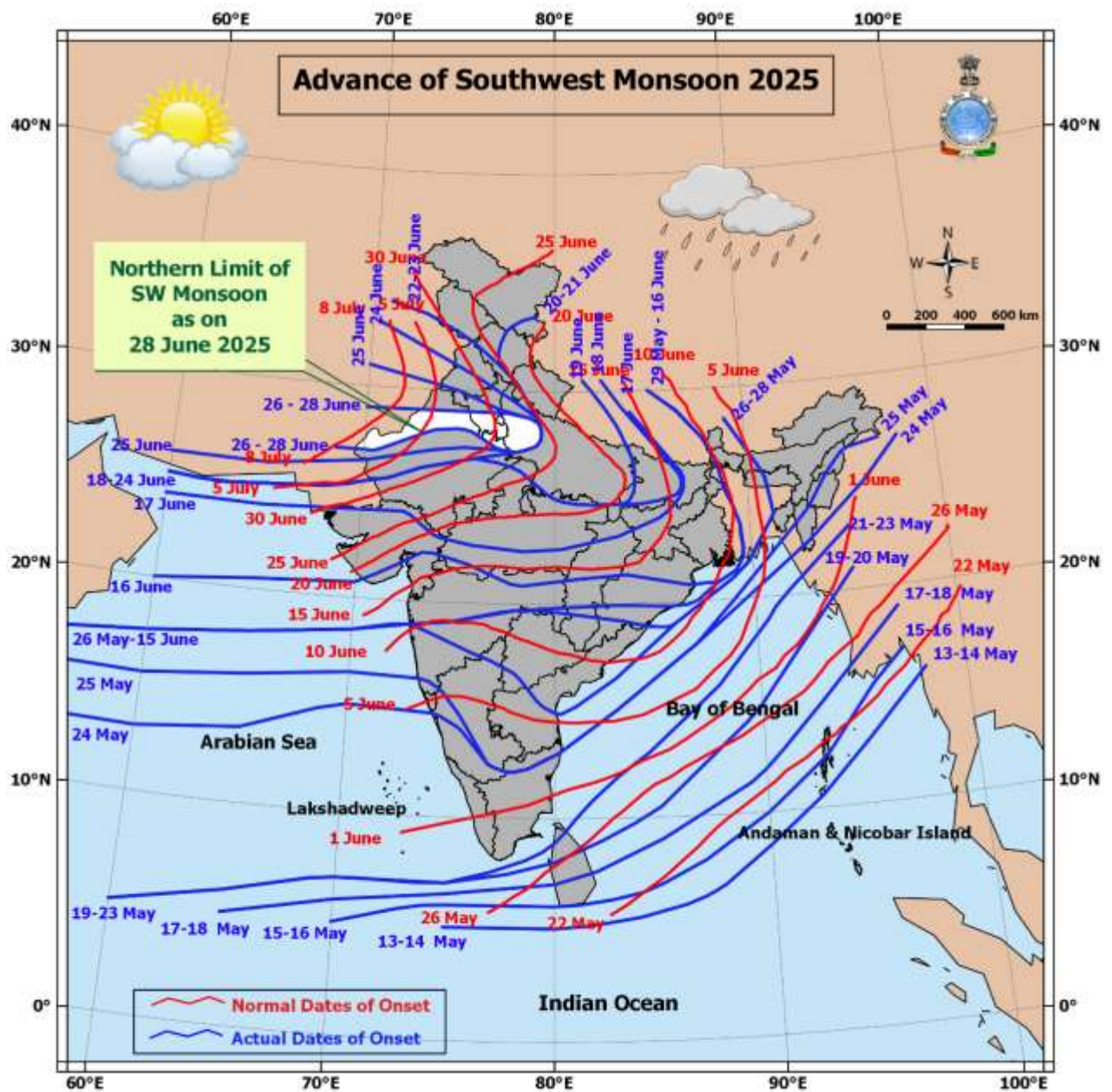
ii. Weather conditions and forecast over Delhi/NCR during 28<sup>th</sup> June to 01<sup>st</sup> July, 2025 (Annexure V)

For more details, kindly refer National Weather Bulletin:

[https://mausam.imd.gov.in/responsive/all\\_india\\_forecast\\_bulletin.php](https://mausam.imd.gov.in/responsive/all_india_forecast_bulletin.php)

For District wise warnings refer: <https://mausam.imd.gov.in/responsive/districtWiseWarningGIS.php>

ANNEXURE I



## ANNEXURE II

### Rainfall recorded (in cm) during past 24 hours till 0830 hours IST of today, the 28<sup>th</sup> June:

- ❖ **Uttarakhand:** Chamoli (dist Chamoli) 18; Jollygrant (dist Dehradun) 17; Sama (dist Bageshwar), Loharkhet (dist Bageshwar) 14 Each; Kapkot (dist Bageshwar) 12; Dehra Dun (dist Dehradun) 10; Rudraprayag (dist Rudraprayag), Narendranagar (dist Garhwal Tehri) 7 Each; East Madhya Pradesh: Devendranagar (dist Panna) 13; Gonour (dist Panna) 12; Nowgong (dist Chhatarpur), Panna-aws (dist Panna), Palera (dist Tikamgarh), Matiyari (dist Mandla) 10 Each; Satna (raghurajnagar) (dist Satna), Pawai (dist Panna), Bahoriband (dist Katni) 9 Each; Mohgaon (dist Mandla), Unchehra (dist Satna) 8 Each; Jabalpur-aws (dist Jabalpur), Katni(mudwara) (dist Katni), Nainpur (dist Mandla), Hanumana (dist Rewa), Malthone (dist Sagar), Ghughri (dist Mandla), Khargapur (dist Tikamgarh) 7 Each;
- ❖ **Andaman & Nicobar Islands:** Maya Bandar (dist North & Middle Andaman) 13, Long Island (dist North & Middle Andaman) 3;
- ❖ **East Madhya Pradesh:** Devendranagar (dist Panna) 13, Gonour (dist Panna) 12, Panna-aws (dist Panna) 10, Palera (dist Tikamgarh) 10, Nowgong (dist Chhatarpur) 10, Matiyari (dist Mandla) 10, Pawai (dist Panna) 9, Satna (raghurajnagar) (dist Satna) 9, Bahoriband (dist Katni) 9, Mohgaon (dist Mandla) 9, Unchehra (dist Satna) 8, Nainpur (dist Mandla) 7, Malthone (dist Sagar) 7, Khargapur (dist Tikamgarh) 7, Katni(mudwara) (dist Katni) 7, Hanumana (dist Rewa) 7, Jabalpur-aws (dist Jabalpur) 7, Ghughri (dist Mandla) 7, Nagode (dist Satna) 7, Bijadandi (dist Mandla) 6;
- ❖ **Punjab:** Lohand (dist Rupnagar) 11, Kotla (dist Rupnagar) 10, Bharatgarh (dist Rupnagar) 7;
- ❖ **Odisha:** Banspal (dist Keonjhar) 11; Jaipur (dist Balasore), Hatadihi (dist Keonjhar) 9 Each; Remuna (dist Balasore), Bhadrak (dist Bhadrak), Kaptipada (dist Mayurbhanj) 8 Each; Balasore (dist Balasore), Tihidi (dist Bhadrak), Ghasipura (dist Keonjhar), Sarasakana (dist Mayurbhanj) 7 Each; Punjab: Lohand (dist Rupnagar) 11; Kotla (dist Rupnagar) 9; Bharatgarh (dist Rupnagar) 7;
- ❖ **East Uttar Pradesh:** Ghorawal (dist Sonbhadra) 10, Robertsganj (dist Sonbhadra) 8, Churk (dist Sonbhadra) 7;
- ❖ **Madhya Maharashtra:** Igatpuri (dist Nashik) 10; Shahuwadi (dist Kolhapur) 8; Gaganbawada (dist Kolhapur) 7;
- ❖ **Haryana:** Tajewala (dist Yamuna Nagar) 9, Partapnagar Rev (dist Yamuna Nagar) 8, Hathinkundberaj Aws (dist Yamuna Nagar) 4;
- ❖ **Chhattisgarh:** Baloda (dist Janjgir) 9, Sonakhan (dist Baloda Bazar) 8, Tilda (dist Raipur) 5;
- ❖ **Nagaland:** Sataka ARG (dist Zunheboto) 9;
- ❖ **West Uttar Pradesh:** Saharanpur (dist Saharanpur) 9;
- ❖ **Coastal Karnataka:** Kadra (dist Uttara Kannada) 9, Castle Rock (dist Uttara Kannada) 8;
- ❖ **Saurashtra & Kutch:** Kalyanpur (dist Devbhoomi Dwarka) 8, Mandvi(k) (dist Kutch) 7, Dwarka (dist Devbhoomi Dwarka) 5;
- ❖ **Jharkhand:** Tenughat (dist Bokaro) 8; Herhanj (dist Latehar) 7;
- ❖ **Kerala & Mahe:** Peerumedu (Idukki district) 8, Thalassery (Kannur district) 7;
- ❖ **West Madhya Pradesh:** Aron (dist Guna) 7, Vijaypur (adp) (dist Sheopur) 4, Khilchipur (dist Rajgarh) 4;
- ❖ **West Rajasthan:** Jaisalmer (dist Jaisalmer) 7, Jaisalmer Tehsil Sr (dist Jaisalmer) 4;
- ❖ **Himachal Pradesh:** Palampur (dist Kangra) 7, Kasauli (dist Solan) 5;
- ❖ **Gangetic West Bengal:** Sagar Island Pto (dist South 24 Parganas) 7, Durgachack (dist East Midnapore) 7, Amta (dist Howrah) 7;
- ❖ **Konkan:** Kankavli (dist Sindhudurg) 7;
- ❖ **Vidarbha:** Kuhu (dist Nagpur) 7, Gondia Ap (dist Gondia) 4;

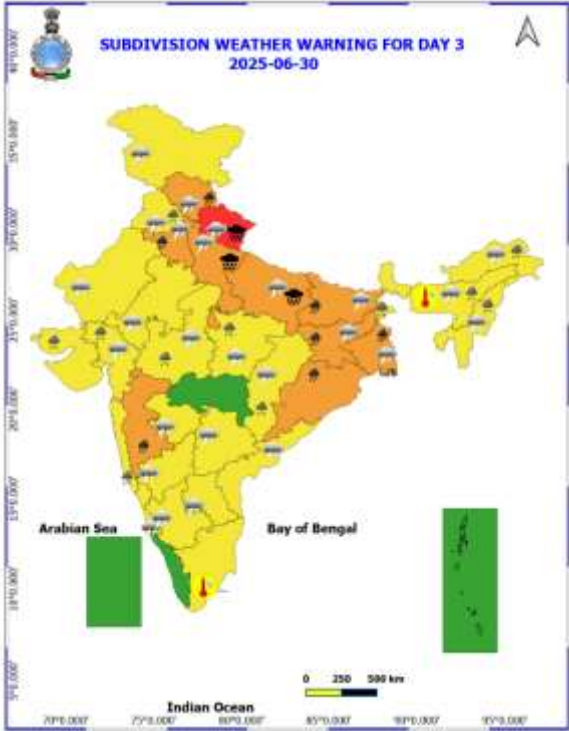
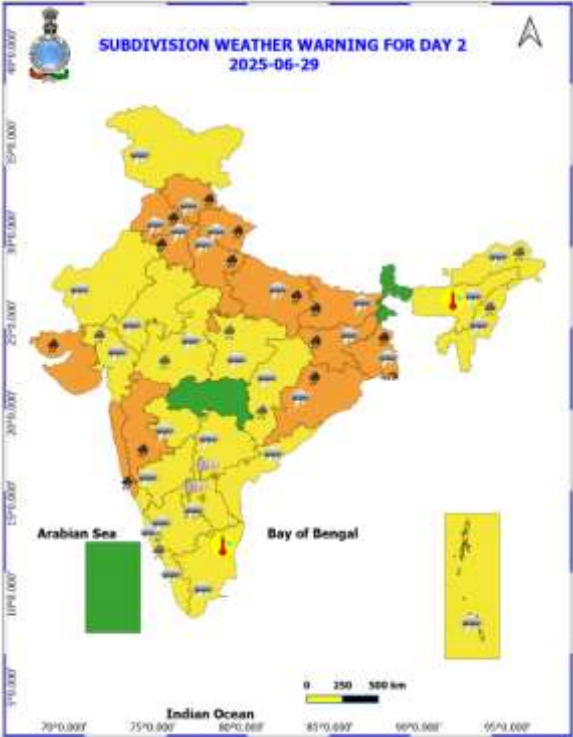
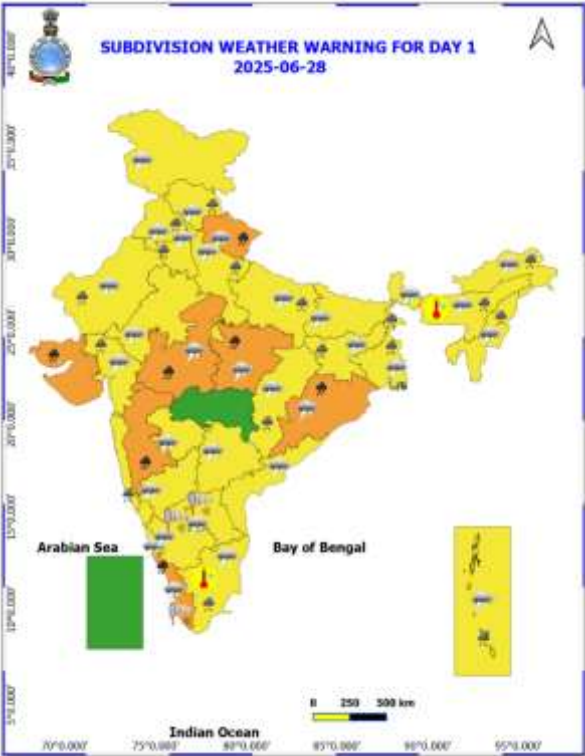
### Realised Gusty Winds (kmph) During Past 24hours ending at 0830 hrs IST of today the 28<sup>th</sup> June:

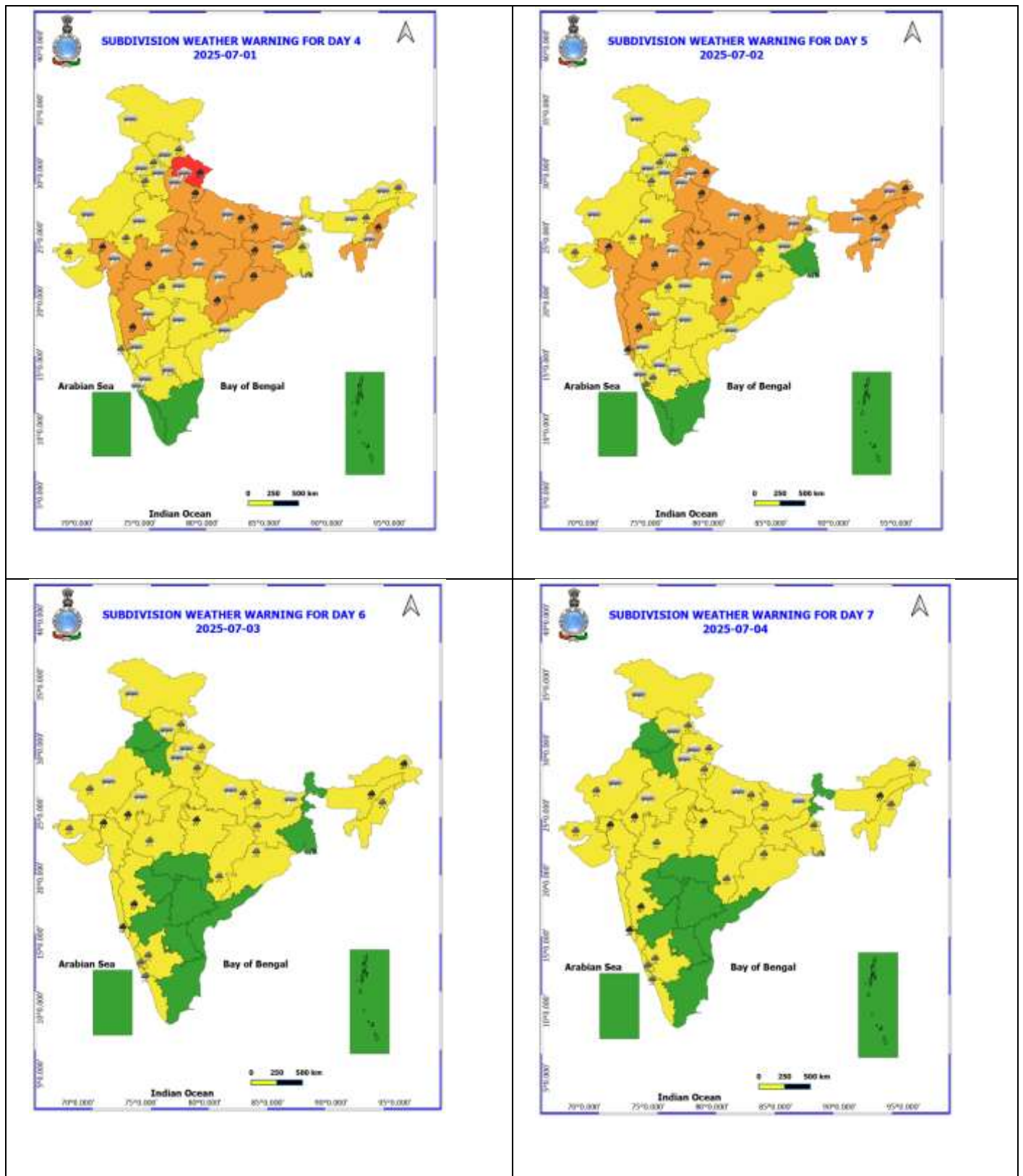
- ❖ **Himachal Pradesh:** Rekonig PEO 65, Sebagh 35, Neri & Tabo 31;
- ❖ **Saurashtra & Kutch:** Veraval (Girsomnath) 59;
- ❖ **Andaman & Nicobar Islands:** Sri Vijayapuram 53;
- ❖ **Madhya Maharashtra:** Mahabaleshwar (Satara) 52, Vilholi (Nashik) 50, Sangola (Solapur) 43;
- ❖ **West Uttar Pradesh:** AGRA(IAF) 50;
- ❖ **Gujarat Region:** Arnej (Ahmedabad) 50;
- ❖ **West Madhya Pradesh:** Harda 50, Ujjain 44, Indore 43, Sehore 37, Gwalior 33, Agar 35, Guna 30;
- ❖ **East Madhya Pradesh:** Singrouli 48, Annupur 31, Sagar 31;
- ❖ **Haryana:** Hisar 48; Jind 33; Yamunanaga & Kaithal 30;
- ❖ **Kerala:** Kasargode 44, Thiruvananthapuram & Ernakulam 43 each;
- ❖ **Konkan:** Santacruz 44, Palghar 43, Dapoli (Ratnagiri) 41;
- ❖ **Marathwada:** Ambejogai (Beed) 43;
- ❖ **Bihar:** East Champaran 41; Sukeht, Saraiya 35; IIT Patna, Pusa, Sheikhpura 33; Aurangabad, Sipaya, Khagaria, Madhepura, Agwanpur 31; Begusarai, Katihar, Muzaffarpur 30



Table-1								
7 Days Rainfall Forecast								
S.No.	Subdivision	28- Jun	29- Jun	30- Jun	1- Jul	2- Jul	3- Jul	4- Jul
		Day 1	Day 2	Day 3	Day 4	Day 5	Day 6	Day 7
1	ANDAMAN & NICOBAR ISLANDS	WS	WS	WS	WS	WS	FWS	FWS
2	ARUNACHAL PRADESH	SCT	SCT	FWS	FWS	FWS	FWS	FWS
3	ASSAM & MEHGHALAYA	SCT	FWS	FWS	FWS	FWS	FWS	FWS
4	NAGALAND, MANIPUR, MIZORAM AND TRIPURA	SCT	FWS	FWS	FWS	FWS	FWS	FWS
5	SUB HIMALAYAN WEST BENGAL & SIKKIM	FWS	FWS	WS	WS	WS	FWS	FWS
6	GANGETIC WEST BENGAL	WS	WS	WS	WS	FWS	FWS	WS
7	ODISHA	WS	WS	WS	WS	FWS	FWS	WS
8	JHARKHAND	WS	WS	WS	WS	WS	WS	WS
9	BIHAR	SCT	FWS	FWS	FWS	FWS	FWS	FWS
10	EAST UTTAR PRADESH	FWS	WS	WS	FWS	FWS	FWS	FWS
11	WEST UTTAR PRADESH	SCT	WS	WS	FWS	FWS	FWS	FWS
12	UTTARAKHAND	FWS	WS	WS	WS	FWS	FWS	FWS
13	HARYANA, CHANDIGARH & DELHI	FWS	FWS	WS	WS	FWS	FWS	FWS
14	PUNJAB	FWS	FWS	WS	WS	FWS	FWS	FWS
15	HIMACHAL PRADESH	FWS	WS	WS	FWS	FWS	FWS	FWS
16	JAMMU AND KASHMIR AND LADAKH	SCT	SCT	SCT	SCT	SCT	SCT	SCT
17	WEST RAJASTHAN	ISOL	ISOL	ISOL	ISOL	SCT	FWS	FWS
18	EAST RAJASTHAN	SCT	SCT	SCT	FWS	FWS	WS	WS
19	WEST MADHYA PRADESH	FWS	FWS	FWS	WS	WS	WS	WS
20	EAST MADHYA PRADESH	FWS	FWS	FWS	WS	WS	WS	WS
21	GUJRAT REGION	WS	WS	WS	WS	WS	FWS	FWS
22	SAURASHTRA & KUTCH	WS	WS	WS	WS	FWS	FWS	FWS
23	KONKAN & GOA	WS	WS	WS	WS	SCT	WS	WS
24	MADHYA MAHARASHTRA	SCT	FWS	SCT	FWS	FWS	FWS	FWS
25	MARATHWADA	ISOL	ISOL	ISOL	ISOL	SCT	ISOL	ISOL
26	VIDARBHA	SCT	SCT	SCT	WS	WS	FWS	FWS
27	CHHATTISGARH	FWS	FWS	WS	WS	WS	WS	WS
28	COASTAL ANDHRA PRADESH	ISOL	ISOL	ISOL	ISOL	ISOL	ISOL	ISOL
29	TELANGANA	ISOL	ISOL	ISOL	SCT	SCT	ISOL	ISOL
30	RAYALASEEMA	ISOL	ISOL	ISOL	ISOL	ISOL	ISOL	ISOL
31	TAMILNADU & PUDUCHERRY	SCT	ISOL	ISOL	ISOL	ISOL	ISOL	ISOL
32	COSTAL KARNATAKA	WS	WS	WS	WS	WS	WS	WS
33	NORTH INTERIOR KARNATAKA	SCT	ISOL	ISOL	ISOL	SCT	SCT	SCT
34	SOUTH INTERIOR KARNATAKA	SCT	ISOL	ISOL	ISOL	SCT	SCT	SCT
35	KERALA AND MAHE	WS	WS	FWS	SCT	FWS	FWS	FWS
36	LAKSHADWEEP	WS	FWS	SCT	SCT	FWS	WS	WS

- As the lead period increases forecast accuracy decreases.





- Action may be taken based on ORANGE AND REDCOLOUR warnings.
- Vulnerable regions likely urban and hilly areas action may be initiated for heavy rainfall warning.
- As the lead period increases forecast accuracy decreases.

Detailed districtwise MultiHazard weather warning for next five days available at <https://mausam.imd.gov.in/responsive/districtWiseWarningGIS.php>



**Weather forecast over Delhi/NCR during 28<sup>th</sup> June to 01<sup>st</sup> July 2025****Past Weather:**

There has been slight fall in the minimum and rise in maximum temperature up to 1°C over Delhi/NCR during the past 24 hours. The maximum and minimum temperatures over Delhi were around 37 to 39 °C and 25 to 28°C, respectively. The minimum and maximum temperatures were near normal. Partly cloudy sky conditions with predominant surface wind from the east/southeast direction with wind speeds up to 18 kmph prevailed during the past 24 hours. Partly cloudy sky conditions with wind speed less than 08 kmph from the southeast direction prevailed over the region in the forenoon today.

**Weather Forecast:**

**28.06.2025:** Partly cloudy sky. Light to moderate rain accompanied with thunderstorm/lightning towards evening/night. The maximum temperatures over Delhi are likely to be in the range of 36 to 38°C. The maximum temperature will be near normal. The predominant surface wind will likely be from the southeast direction with a wind speed of less than 15 kmph in the afternoon. The wind speed will gradually decrease becoming 08-10 kmph from the south direction during evening and night.

**29.06.2025:** Generally cloudy sky. Light to moderate rain/thunderstorm/lightning accompanied with gusty wind (speed 30 – 40 kmph) during thunderstorm. The maximum and minimum temperatures over Delhi are likely to be in the range of 32 to 34°C and 26 to 28°C respectively. The minimum temperature will be near normal and the maximum temperature will be below normal up to 3 to 5 °C. The predominant surface wind will likely be from the southwest direction with a wind speed of less than 15 kmph during the morning hours. The wind speed will gradually increase becoming 15-20 kmph from the southwest direction in the afternoon. It will decrease becoming less than 18 kmph from the southwest direction during evening and night.

**30.06.2025:** Generally cloudy sky. Light rain accompanied with thunderstorm/lightning. The maximum and minimum temperatures over Delhi are likely to be in the range of 32 to 34°C and 25 to 27°C, respectively. The minimum temperature will be below normal up to 1 to 2°C, and the maximum temperature will be below normal up to 3 to 5°C. The predominant surface wind will likely be from the southwest direction with a wind speed of less than 15 kmph during the morning hours. The wind speed will gradually decrease becoming less than 10 kmph from the southwest direction in the afternoon. It will increase to less than 15 kmph from the southwest direction during the evening and night.

**01.07.2025:** Generally cloudy sky. Light rain accompanied with thunderstorm/lightning. The maximum and minimum temperatures over Delhi are likely to be in the range of 32 to 34°C and 24 to 26°C, respectively. The minimum temperature will be below normal up to 1 to 3 °C, and the maximum temperature will be below normal up to 3 to 5°C. The predominant surface wind will likely be from the west direction with a wind speed of less than 15 kmph during the morning hours. The wind speed will gradually decrease becoming less than 10 kmph from the west direction in the afternoon. It will increase to less than 12 kmph from the southwest direction during the evening and night.

**Impact expected and Action Suggested due to thunderstorm with lightning/gusty winds:**

- Be cautious and take precautionary measures, though there is the likelihood of thunderstorm/lightning.
- Breaking of tree branches, uprooting of large avenue trees, Large dead limbs blown from trees, Damage to standing crops, Minor to major damage to power and communication lines due to breaking of branches, Partial damage to vulnerable structures due to strong winds, Loose objects may fly.
- People are advised to keep a watch on the weather for worsening conditions and be ready to move to safer places accordingly, stay indoors, close windows & doors and avoid travel if possible, take safe shelters; do not take shelter under trees, do not lie on concrete floors and do not lean against concrete walls, unplug electrical/ electronic appliances, immediately get out of water bodies, keep away from all the objects that conduct electricity.



### Impact & Action Suggested due to extremely heavy falls/ very heavy rainfall:

- ✓ **Extremely heavy rainfall (>20 cm/24 hours) likely at isolated places over Uttarakhand and Uttar Pradesh on 30<sup>th</sup> June.**
- ✓ **Heavy to very heavy rainfall** at isolated places over Konkan & Goa, Ghat areas of Madhya Maharashtra, Gujarat state during next 7 days; Himachal Pradesh, Gangetic West Bengal on 29<sup>th</sup> & 30<sup>th</sup> June; Kerala on 28<sup>th</sup> June; Uttarakhand during 28<sup>th</sup> June-02<sup>nd</sup> July; Punjab on 29<sup>th</sup> June; Haryana, Chandigarh on 29<sup>th</sup> & 30<sup>th</sup> June; Uttar Pradesh on 29<sup>th</sup> June, 01<sup>st</sup> & 02<sup>nd</sup> July; East Rajasthan on 03<sup>rd</sup> & 04<sup>th</sup> July; West Madhya Pradesh on 28<sup>th</sup> June, 01<sup>st</sup> & 02<sup>nd</sup> July; East Madhya Pradesh on 28<sup>th</sup> June & during 01<sup>st</sup>-04<sup>th</sup> July; Nagaland & Chhattisgarh on 01<sup>st</sup> & 02<sup>nd</sup> July; Bihar during 29<sup>th</sup> June-02<sup>nd</sup> July; Jharkhand during 29<sup>th</sup> June-01<sup>st</sup> July; Odisha during 28<sup>th</sup> June-01<sup>st</sup> July; Arunachal Pradesh on 02<sup>nd</sup> & 03<sup>rd</sup> July; Assam & Meghalaya during 02<sup>nd</sup>-04<sup>th</sup> July.

#### Impact Expected

- Localized Flooding of roads, water logging in low lying areas and closure of underpasses mainly in urban areas of the above region.
- Occasional reduction in visibility due to heavy rainfall.
- Disruption of traffic in major cities due to water logging in roads leading to increased travel time.
- Minor damage to kutcha roads.
- Possibilities of damage to vulnerable structure.
- Localized Landslides/Mudslides/landslips/mudslips/landsinks/mudsinks.
- Damage to horticulture and standing crops in some areas due to inundation.
- It may lead to riverine flooding in some river catchments (for riverine flooding please visit Web page of CWC)

#### Action Suggested

- Check for traffic congestion on your route before leaving for your destination.
- Follow any traffic advisories that are issued in this regard.
- Avoid going to areas that face the water logging problems often.
- Avoid staying in vulnerable structure.

### Agromet advisories for likely impact of Heavy / Heavy to Very Heavy / Extremely Heavy Rainfall

- In **Uttarakhand**, postpone sowing of rice nursery. Ensure proper drainage facilities in pigeon pea, groundnut, maize, sugarcane, barnyard millet, finger millet, already sown rice nurseries, kidney beans, blackgram, green gram, vegetable and orchards. Harvest mature vegetables (pumpkin, tomato, okra, chilli, French bean etc.) and fruits and store in safe place. Tie the sugarcane plants together to avoid lodging. In **Bhabar and Tarai Zone of Uttarakhand**, postpone sowing of rice nurseries, soybean, kidney beans, blackgram and green gram. Keep the harvested produce of spring maize in safe place.
- In **Himachal Pradesh**, provide drainage in the fields of vegetables and fruit orchards. Remove weeds and lower leaves from tomato plants to reduce the occurrence of soil-borne diseases. Strengthen the support for creepers and tall vegetable crops (tomato, capsicum etc.). Harvest matured fruits of plum, pear, stone fruit and keep in safe places to minimize losses due to heavy rains. In **mandi district** postpone sowing of maize and transplanting of rice. Drain out excess water from rice nurseries and already sown maize field.
- **West Uttar Pradesh**, postpone sowing of maize. Drain out excess water from already sown maize, rice nurseries, vegetables, pigeon pea and sugarcane. Tie the sugarcane plants together to avoid lodging. **East Uttar Pradesh**, postpone sowing of pigeon pea and black gram. Drain out excess water from vegetables, late sown rice nurseries ground nut green gram and maize.
- **Punjab** - Drain out excess water from cotton, maize fields and orchards.
- In **Chhattisgarh**, ensure proper drainage in rice nurseries.
- In **Jharkhand**, make necessary arrangements to drain out excess water from already sown maize fields, rice and vegetable nurseries.
- In **Gujarat** make necessary arrangements to drain out excess water in already sown rice nurseries, sugarcane fields, banana and mango plantations to prevent waterlogging. Provide support to sugarcane and banana to prevent lodging. In **Saurashtra & Kutch**, Drain out excess rain water from vegetable nurseries and horticultural plantations. Undertake propping in sugarcane with strong bamboo or tie the leaves together in a clump to protect against wind and heavy rain.

- In **Konkan & Goa** make arrangements to drain out excess water from rice nurseries, fields of finger millet, groundnut and orchards to prevent waterlogging. In **ghat areas of Madhya Maharashtra**, drain out excess water from rice nurseries, vegetables and orchards to prevent waterlogging.
- In **West Madhya Pradesh**, postpone harvesting of maize. Postpone sowing of pearl millet, soybean, pigeon pea and paddy nurseries. Make necessary arrangements to drain out excess water from vegetables and orchards to avoid waterlogging. In **East Madhya Pradesh**, keep the harvested produce of maize, green gram and black gram in safe places. Ensure proper drainage in already sown / transplanted fields.
- In **Odisha**, ensure proper drainage from already sown rice nurseries, fields of maize and vegetables to prevent waterlogging. Cover rice and vegetable nurseries with plastic sheets to prevent washing away of seeds.
- **Gangetic West Bengal** - Make necessary arrangements for draining out excess water from rice nursery and ginger to avoid water stagnation.
- In **Kerala**, ensure proper drainage facilities in rice nurseries, transplanted rice fields, coconut and banana plantations to prevent water logging. Undertake propping in banana to protect the plants from heavy rains.

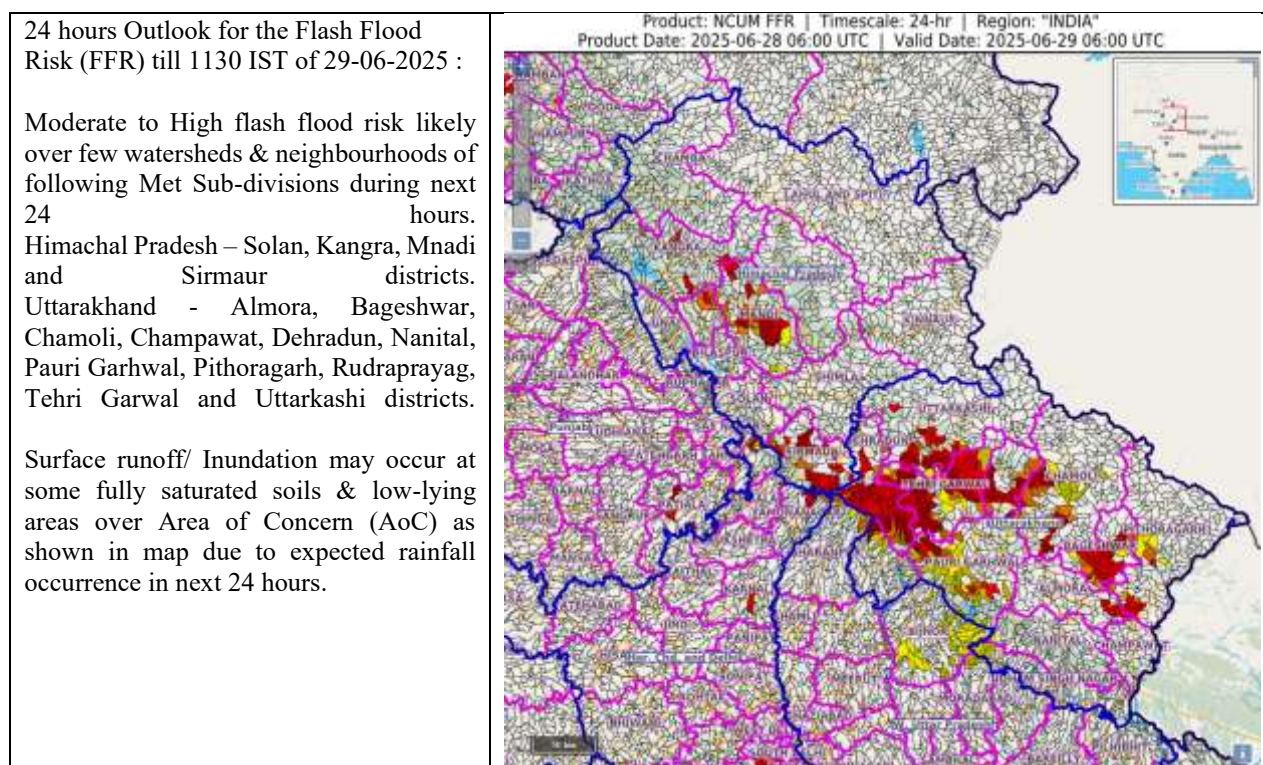
#### Livestock / Fishery

- Keep the animals inside the shed during heavy rainfall and provide them balanced feed.
- Store feed and fodder in a safe place to prevent spoilage.
- Construct an outlet with proper netting around the ponds to drain out excess water, thereby preventing fish from escaping in case of overflow.

#### Agromet advisories for likely impact of Thunderstorm / Gusty Winds / Squally Winds

- Provide mechanical support to horticultural crops and staking or support to vegetables and young fruit plants / fruit-bearing plants to avoid lodging due to strong winds.

#### Flash flood guidance:

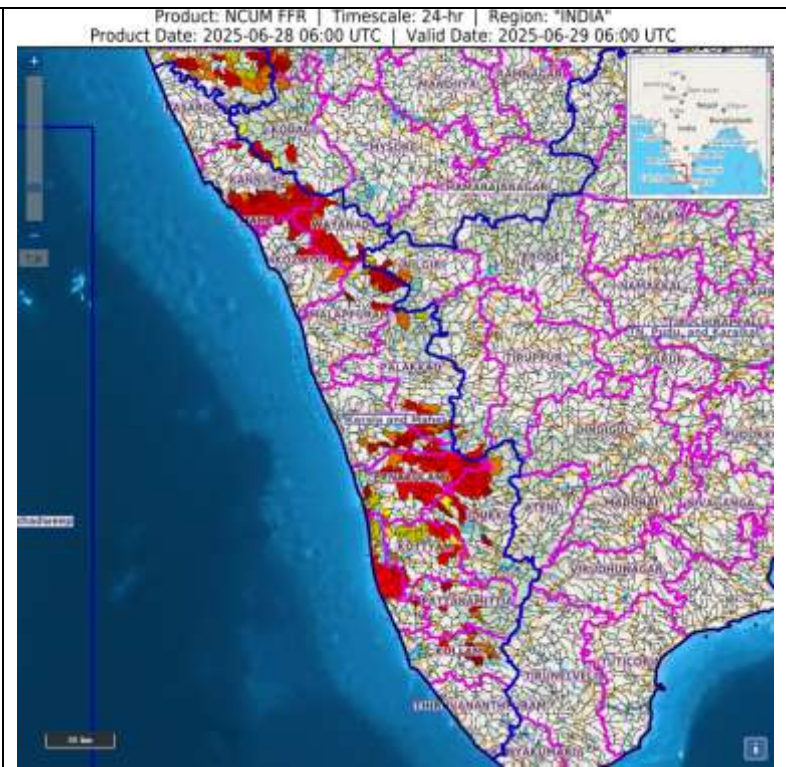


24 hours Outlook for the Flash Flood Risk (FFR) till 1130 IST of 29-06-2025 :

Moderate to High flash flood risk likely over few watersheds & neighbourhoods of following Met Sub-divisions during next 24 hours.

Kerala – Kannur, Waynad, Kozhikode, Malappuram, Palakkad, Eranakulam, Idukki, Kottayam, Alappuzha and Kollam districts.

Surface runoff/ Inundation may occur at some fully saturated soils & low-lying areas over Area of Concern (AoC) as shown in map due to expected rainfall occurrence in next 24 hours.



### Legends & abbreviations:

- ❖ **Heavy Rain:**64.5-115.5mm; **Very Heavy Rain:**115.6-204.4mm; **Extremely Heavy Rain:** >204.4mm.
- ❖ **Obsy:** Observatory; Automatic Weather Station; **ARG:** Automatic Rain Gauge; **dist:** District; **NH:** National Highway; **KVK:** Krishi Vigyan Kendra; **DVC:** Damodar Valley Corporation; **PTO:** Part Time Office, **Aero:** Aerodrome, **IAF:** Indian Air Force.
- ❖ **Region wise classification of meteorological Sub-Divisions:**
  - **Northwest India:** Western Himalayan Region (Jammu-Kashmir-Ladakh-Gilgit-Baltistan-Muzaffarabad, Himachal Pradesh and Uttarakhand); Punjab, Haryana-Chandigarh-Delhi; West Uttar Pradesh, East Uttar Pradesh, West Rajasthan and East Rajasthan.
  - **Central India:** West Madhya Pradesh, East Madhya Pradesh, Vidarbha and Chhattisgarh.
  - **East India:** Bihar, Jharkhand, Sub-Himalayan West Bengal & Sikkim; Gangetic West Bengal, Odisha and Andaman & Nicobar Islands.
  - **Northeast India:** Arunachal Pradesh, Assam & Meghalaya and Nagaland, Manipur, Mizoram & Tripura.
  - **West India:** Gujarat Region, Saurashtra & Kutch, Konkan & Goa, Madhya Maharashtra and Marathawada.
  - **South India:** Coastal Andhra Pradesh & Yanam, Telangana, Rayalaseema, Coastal Karnataka, North Interior Karnataka, South Interior Karnataka, Kerala & Mahe, Tamil Nadu, Puducherry & Karaikal and Lakshadweep.



## LEGENDS

1. अंडमान और निकोबार द्वीपसमूह

2. अरुणाचल प्रदेश

3. असम और मेघालय

4. नागालैंड, मणिपुर, मिजोरम और त्रिपुरा

5. उप-हिमालयी पश्चिम बंगाल और सिक्किम

6. गंगीय पश्चिम बंगाल

7. ओडिशा

8. झारखंड

9. बिहार

10. पूर्वी उत्तर प्रदेश

11. पश्चिम उत्तर प्रदेश

12. उत्तराखंड

13. हरियाणा, चंडीगढ़ और दिल्ली

14. पंजाब

15. हिमाचल प्रदेश

16. जम्मू और कश्मीर और लद्दाख

17. पश्चिम राजस्थान

18. पूर्वी राजस्थान

19. पश्चिम मध्य प्रदेश

20. पूर्वी मध्य प्रदेश

21. गुजरात

22. सौराष्ट्र

23. कोंकण और गोवा

24. मध्य महाराष्ट्र

25. मराठवाड़ा

26. विदर्भ

27. छत्तीसगढ़

28. तटीय आंध्र प्रदेश और यनम

29. तेलंगाना

30. रायलसीमा

31. तमिलनाडु, पुडुचेरी और कराईकल

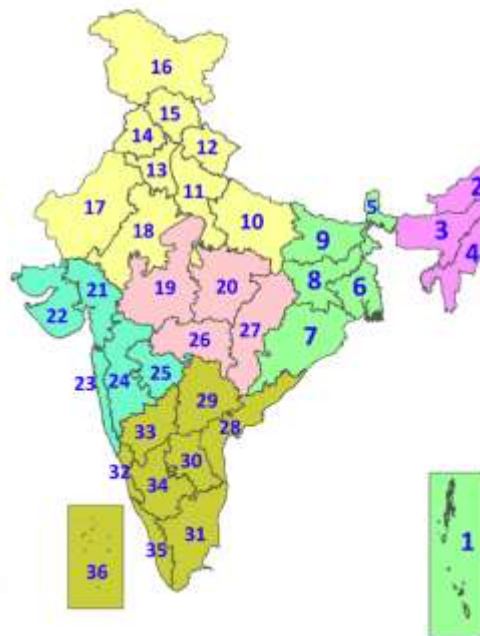
32. तटीय कर्नाटक

33. आंतरिक उत्तरी कर्नाटक

34. आंतरिक दक्षिणी कर्नाटक

35. केरल और माहे

36. लक्षद्वीप



1. Andaman & Nicobar Islands

2. Arunachal Pradesh

3. Assam & Meghalaya

4. Nagaland, Manipur, Mizoram & Tripura

5. Sub-Himalayan West Bengal & Sikkim

6. Gangetic West Bengal

7. Odisha

8. Jharkhand

9. Bihar

10. East Uttar Pradesh

11. West Uttar Pradesh

12. Uttarakhand

13. Haryana, Chandigarh & Delhi

14. Punjab

15. Himachal Pradesh

16. Jammu & Kashmir and Ladakh

17. West Rajasthan

18. East Rajasthan

19. West Madhya Pradesh

20. East Madhya Pradesh

21. Gujarat

22. Saurashtra

23. Konkan & Goa

24. Madhya Maharashtra

25. Marathwada

26. Vidarbha

27. Chhattisgarh

28. Coastal Andhra Pradesh & Yanam

29. Telangana

30. Rayalaseema

31. Tamilnadu, Puducherry & Karaikal

32. Coastal Karnataka

33. North Interior Karnataka

34. South Interior Karnataka

35. Kerala & Mahe

36. Lakshadweep

## SPATIAL DISTRIBUTION (% of Stations reporting)

% Stations	Category	% Stations	Category
76-100	Widespread (WS/Most Places)	26-50	Scattered (SCT/A Few Places)
51-75	Fairly Widespread (FWS/Many Places)	1-25	Isolated (ISOL)



Fog



Heavy Rain



Very Heavy Rain



Extremely Heavy Rain



Thunder & Lightning



Hailstorm



Dust Raising Winds



Heavy Snow



Dust Storm



Heat Wave



Warm Night



Hot Day



Hot & Humid



Strong Surface Winds



Cold Wave



Cold Day



Ground Frost

### COLOUR CODED WARNING

No Warning (No Action)
Watch (Be Aware)
Alert (Be Prepared To Take Action)
Warning (Take Action)

### Probabilistic Forecast

Terms	Probability of Occurrence (%)
Unlikely	< 25
Likely	25 - 50
Very Likely	50 - 75
Most Likely	> 75

\* Red colour warning does not mean "Red Alert", Red colour warning means "Take Action".

Forecast and Warning for any day is valid from 0830 hours IST of day till 0830 hours IST of next day.

For more details, kindly visit <https://mausam.imd.gov.in> or contact: 011-2434-4599

(Service to the Nation since 1875)

### DEFINITION/CRITERIA

#### Rain/ Snow \*

Heavy: 64.5 to 115.5 mm/cm \*  
Very Heavy: 115.6 to 204.4 mm/cm \*  
Extremely Heavy: > 204.4 mm/cm \*

#### Heat Wave

When maximum temperature of a station reaches  $\geq 40^{\circ}\text{C}$  for plains and  $\geq 30^{\circ}\text{C}$  for hilly regions  
(a) Based on Departure from normal

Heat Wave: Maximum Temperature Departure from normal  $4.5^{\circ}\text{C}$  to  $6.4^{\circ}\text{C}$ .

Severe Heat Wave: Maximum Temperature Departure from normal  $\geq 6.5^{\circ}\text{C}$

(b). Based on Actual maximum temperature

Heat Wave: When actual maximum temperature  $\geq 45^{\circ}\text{C}$ .

Severe Heat Wave: When actual maximum temperature  $\geq 47^{\circ}\text{C}$ .

(c). Criteria for heat wave for coastal stations

When maximum temperature departure is  $> 4.5^{\circ}\text{C}$  from normal. Heat Wave may be described provided maximum temperature  $\geq 37^{\circ}\text{C}$ .

#### Warm Night

When maximum temperature remains  $40^{\circ}\text{C}$

Warm Night: When minimum temperature departure  $4.5^{\circ}\text{C}$  to  $6.4^{\circ}\text{C}$ .

Severe Warm Night: When minimum temperature departure  $> 6.4^{\circ}\text{C}$ .

#### Cold Wave

When minimum temperature of a station  $\leq 10^{\circ}\text{C}$  for plains and  $\leq 0^{\circ}\text{C}$  for hilly regions.

(a). Based on departure

Cold Wave: Minimum Temperature Departure from normal  $-4.5^{\circ}\text{C}$  to  $-6.4^{\circ}\text{C}$ .

Severe Cold Wave: Minimum Temperature Departure from normal  $\leq -6.5^{\circ}\text{C}$

(b) Based on actual Minimum Temperature (for Plains only)

Cold Wave: When Minimum Temperature is  $\leq 4.0^{\circ}\text{C}$

Severe Cold Wave: When Minimum Temperature is  $\leq 2.0^{\circ}\text{C}$

(c) For Coastal Stations

When Minimum Temperature departure is  $\leq -4.5^{\circ}\text{C}$  & actual Minimum Temperature is  $\leq 15^{\circ}\text{C}$

#### Cold Day

When minimum temperature of a station  $\leq 10^{\circ}\text{C}$  for plains and  $\leq 0^{\circ}\text{C}$  for hilly regions

Based on departure

Cold Day: Maximum Temperature Departure from normal  $-4.5^{\circ}\text{C}$  to  $-6.4^{\circ}\text{C}$ .

Severe Cold Day: Maximum Temperature Departure from normal  $\leq -6.5^{\circ}\text{C}$

#### Fog

Phenomenon of small droplets suspended in air and the horizontal visibility  $< 1\text{km}$

Moderate Fog: When the visibility between 500-200 metres

Dense Fog: when the visibility between 50- 200 metres

Very Dense Fog: when the visibility  $< 50$  metres

#### Thunderstorm

Sudden electrical discharges manifested by a flash of light (Lightning) and a sharp rumbling sound (thunder)

#### Dust/Sand Storm

An ensemble of particles of dust or sand energetically lifted to great heights by a strong and turbulent wind.

#### Frost

Ice deposits on ground

Air temperature  $\leq 4^{\circ}\text{C}$  ( over Plains)

#### Squall

A strong wind that rises suddenly, lasts for atleast 1 minute.

Moderate: Wind speed 52-61 kmph

Severe: Wind speed 62-67 kmph

Very Severe: Wind speed  $> 67$  kmph

#### Sea State

Effect of various waves in the sea over specific area

Rough to very rough: Wind speed 41-62 kmph (22-33 knots) & Wave height 2.5-6 metre

High to very high: Wind speed 63-117 kmph ( 34-63 knots) & Wave height 6-14 metre

Phenomenal: Wind speed  $> 117$  kmph ( $> 63$  knots) & Wave height  $> 14$  metre

#### Cyclone

Cyclonic Storm: Wind speed 62-87 kmph (34-47 knots)

Severe Cyclonic Storm: Wind speed 88-117 kmph (48-63 knots)

Very Severe Cyclonic Storm: Wind speed 118-165 kmph (64 - 89 knots)

Extremely Severe Cyclonic Storm: Wind speed 166-220 kmph (90 -119 knots)

Super Cyclone Storm: Wind speed  $> 220$  kmph ( $> 119$  knots)

\* Red colour warning does not mean "Red Alert", Red colour warning means "Take Action".

Forecast and Warning for any day is valid from 0830 hours IST of day till 0830 hours IST of next day.

For more details, kindly visit <https://mausam.imd.gov.in> or contact: 011-2434-4599

(Service to the Nation since 1875)

**Hot and Humid:** When maximum temperatures remain  $3^{\circ}\text{C}$  above normal along with the above normal relative humidity.